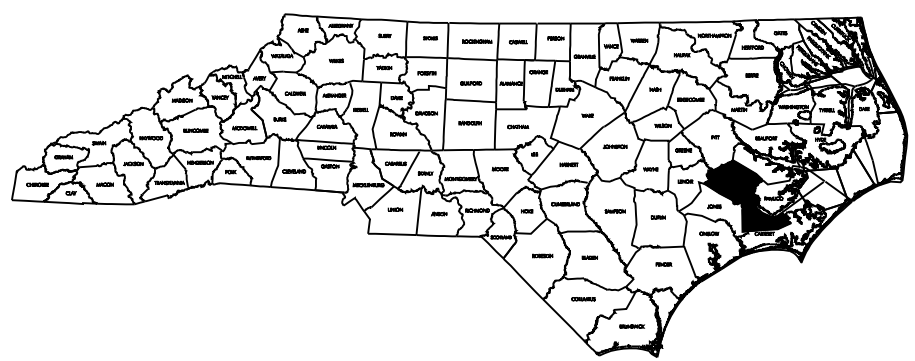


DATE  
SHEET

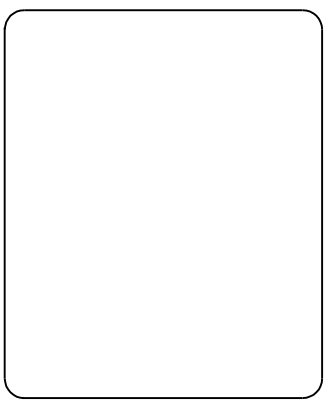
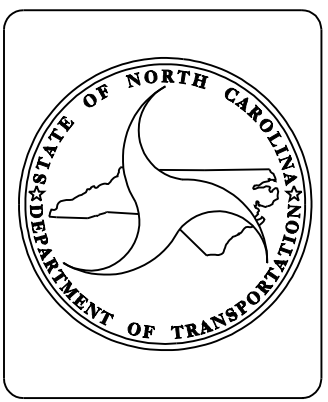
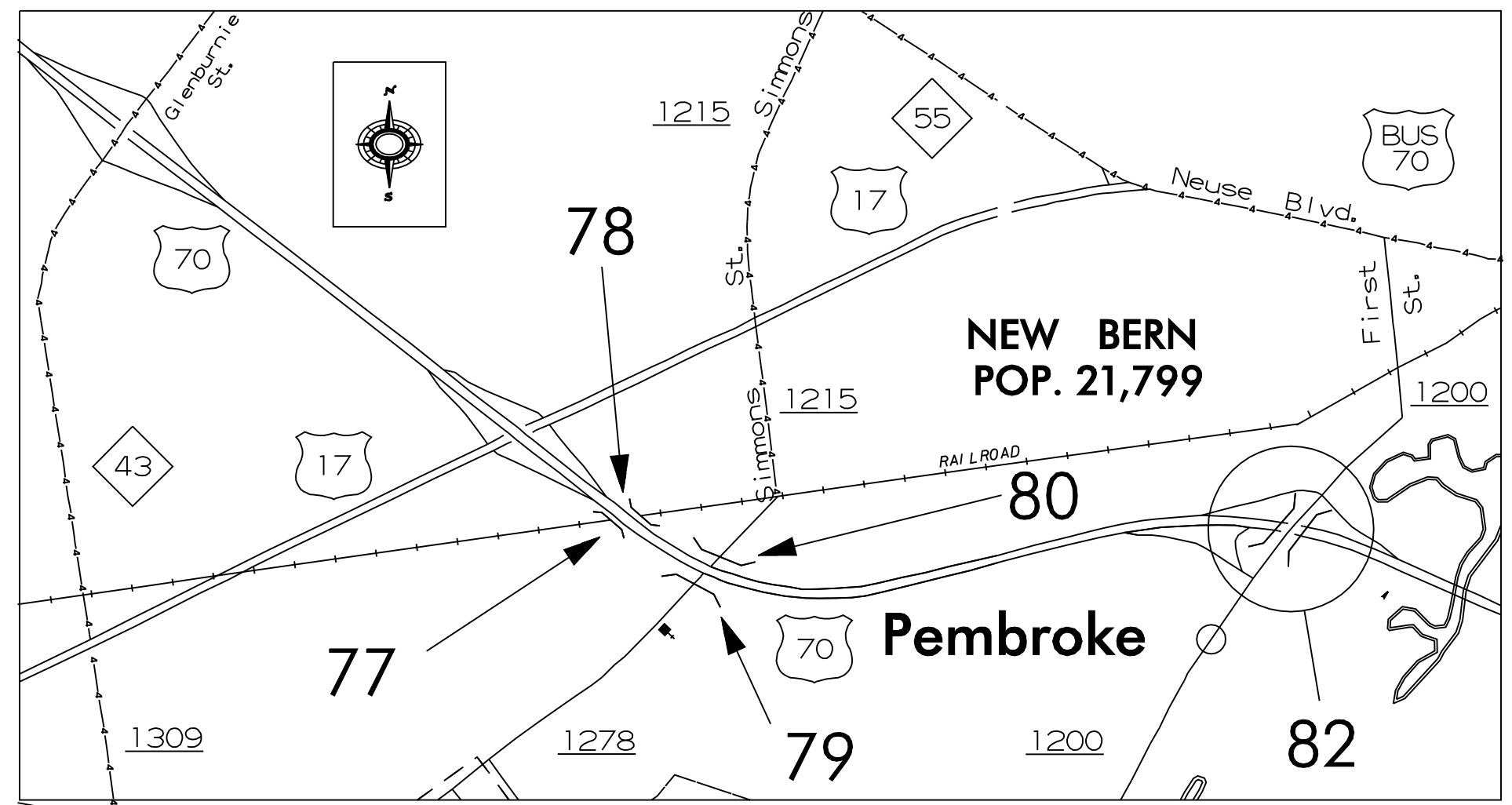
PROJECT: BK-5102P  
CONTRACT NO: D000082



STATE OF NORTH CAROLINA  
DIVISION OF HIGHWAYS  
**CRAVEN COUNTY**

LOCATION: US 70  
TYPE OF WORK: BRIDGE PRESERVATION:  
CLEANING & PAINTING OF  
BRIDGE #77, #78, #79, #80 & #82.

STATE	STATE PROJECT REFERENCE NO.	SHEET NO.	TOTAL SHEETS
N.C.	BK-5102P	1	
STATE PROJECT NO.	F.A. PROJ. NO.	DESCRIPTION	
42580.1.1	BRNHS-0070(145)	PE	
42580.3.14	BRNHS-0070(145)	CONSTR	



PROJECT LENGTH

Prepared in the Office of:  
**BRIDGE MANAGEMENT UNIT**  
NORTH CAROLINA DEPARTMENT OF TRANSPORTATION  
2006 STANDARD SPECIFICATIONS

LETTING DATE: OCTOBER 28, 2010	DAN HOLDERMAN, PE STATE BRIDGE MANAGEMENT ENGINEER
-----------------------------------	--

MIKE SUMMERS  
BRIDGE MANAGEMENT  
PROJECT MANAGER

NORTH CAROLINA  
PROFESSIONAL  
SEAL  
20208  
8/16/10  
ENGINEER  
ERIC B. NELSON, J.R.

RICK NELSON, PE  
DESIGN ENGINEER

WBS 42580.3.1

BK-5102P

9/28/2010  
U:\TrafficControl\BK-5102P Craven 77, 78, 79, 80, 82\TCP\Plan Sheets\BK-5102P\_tc\_psh\_01.dgn  
gkarageorge

STATE OF NORTH CAROLINA  
DIVISION OF HIGHWAYS

PLAN FOR PROPOSED  
TRAFFIC CONTROL  
CRAVEN COUNTY

LOCATION: BRIDGE NO.S 77, 78, 79, 80 AND 82.

TYPE OF WORK: TRAFFIC CONTROL FOR BRIDGE PAINTING

ROADWAY STANDARD DRAWINGS

THE FOLLOWING ROADWAY STANDARDS AS APPEAR IN "ROADWAY STANDARD DRAWINGS" -  
PROJECT SERVICES UNIT - N.C. DEPARTMENT OF TRANSPORTATION - RALEIGH, N.C.,  
DATED JULY 2006 ARE APPLICABLE TO THIS PROJECT AND BY REFERENCE HEREBY ARE  
CONSIDERED A PART OF THESE PLANS:

STD. NO.	TITLE
1101.02	TEMPORARY LANE CLOSURES
1101.04	TEMPORARY SHOULDER CLOSURES
1101.11	TRAFFIC CONTROL DESIGN TABLES
1110.02	PORTABLE WORK ZONE SIGNS
1115.01	FLASHING ARROW PANELS
1130.01	DRUMS
1135.01	CONES
1145.01	BARRICADES
1150.01	FLAGGING DEVICES
1180.01	SKINNY DRUMS

INDEX OF SHEETS

SHEET NO.	TITLE
TCP-1	LIST OF APPLICABLE ROADWAY STANDARD DRAWINGS, LEGEND, AND INDEX OF SHEETS
TCP-2	GENERAL NOTES
TCP-3	VICINITY MAP AND PROJECT PHASING
TCP-4	BRIDGE NO. 77 & 78 ROAD CLOSURE OF WALMART SERVICE RD.
TCP-5	BRIDGE NO. 79 & 80 FLAGGING OPERATION ON TRENT RD.
TCP-5A	BRIDGE NO. 79 & 80 FLAGGING OPERATION ON TRENT RD.
TCP-6	BRIDGE NO. 82 OVER US 70 EAST RT LANE CLOSURE THRU ENTRANCE RAMP
TCP-6A	BRIDGE NO. 82 OVER US 70 EAST LOOP CLOSURE
TCP-6B	BRIDGE NO. 82 OVER US 70 EAST LOOP CLOSURE - DETOUR ROUTE
TCP-7	LANE CLOSURE DETAILS

STATE PROJECT REFERENCE NO.


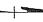

BK-5102P

SHEET NO.





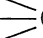
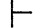



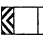


TCP-1


LEGEND

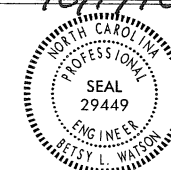
GENERAL

-  DIRECTION OF TRAFFIC FLOW
-  NORTH ARROW
-  WORK AREA

TRAFFIC CONTROL DEVICES

-  TYPE III BARRICADE
-  CONE
-  DRUM  SKINNY DRUM
-  FLASHING ARROW PANEL (TYPE C)
-  STATIONARY SIGN
-  PORTABLE SIGN
-  STATIONARY OR PORTABLE SIGN
-  CHANGEABLE MESSAGE SIGN
-  TRUCK MOUNTED IMPACT ATTENUATOR (TMIA)
-  LAW ENFORCEMENT
-  FLAGGER

APPROVED   
DATE: 10/11/10



PLAN PREPARED BY:



Stantec Consulting Services Inc.  
Suite 300, 801 Jones Franklin Road  
Raleigh, NC  
27606  
Tel. 919.851.6866  
Fax. 919.851.7024  
www.stantec.com

BETSY L. WATSON, PE

TRAFFIC CONTROL ENGINEER

GEORGE KARAGEORGE

TRAFFIC CONTROL DESIGNER

9/28/2010  
U:\Traffic\TrafficControl\BK-5102P Craven 77.76, 79, 80, 82\TCP\Plan Sheets\BK-5102P - tc.psh.02.dgn  
gkarageorge

CHANGES MAY BE REQUIRED WHEN PHYSICAL DIMENSIONS IN THE DETAIL DRAWINGS, STANDARD DETAILS, AND ROADWAY DETAILS ARE NOT ATTAINABLE TO MEET FIELD CONDITIONS OR RESULT IN DUPLICATE OR UNDESIRED OVERLAPPING OF DEVICES. MODIFICATION MAY INCLUDE: MOVING, SUPPLEMENTING, COVERING, OR REMOVAL OF DEVICES AS DIRECTED BY THE ENGINEER.

THE FOLLOWING GENERAL NOTES APPLY AT ALL TIMES FOR THE DURATION OF THE CONSTRUCTION PROJECT EXCEPT WHEN OTHERWISE NOTED IN THE PLAN OR DIRECTED BY THE ENGINEER.

LANE CLOSURE TIME RESTRICTIONS

A) DO NOT CLOSE OR NARROW TRAVEL LANES AS FOLLOWS:

ROAD NAME	DAY AND TIME RESTRICTIONS
TRENT RD.	6:30-9:00 AM & 3:00-6:00 PM MONDAY THRU FRIDAY
US 70	6:00 A.M.- 9:00 A.M. MONDAY THRU FRIDAY
US 70	2:30 P.M.- 6:00 P.M. MONDAY THRU FRIDAY

B) DO NOT CLOSE OR NARROW TRAVEL LANES DURING HOLIDAYS AND SPECIAL EVENTS AS FOLLOWS:

ROAD NAME  
US 70 AND TRENT RD. HOLIDAY RESTRICTIONS.

HOLIDAY

- FOR ANY UNEXPECTED OCCURRENCE THAT CREATES UNUSUALLY HIGH TRAFFIC VOLUMES, AS DIRECTED BY THE ENGINEER.
- FOR NEW YEAR'S, BETWEEN THE HOURS OF 6:00 A.M. DECEMBER 31st TO 6:00 P.M. JANUARY 2nd. IF NEW YEAR'S DAY IS ON A FRIDAY, SATURDAY, SUNDAY, OR MONDAY THEN UNTIL 6:00 P.M. THE FOLLOWING TUESDAY.
- FOR EASTER, BETWEEN THE HOURS OF 6:00 A.M. THURSDAY AND 6:00 P.M. MONDAY.
- FOR MEMORIAL DAY, BETWEEN THE HOURS OF 6:00 A.M. FRIDAY TO 6:00 P.M. TUESDAY.
- FOR INDEPENDENCE DAY, BETWEEN THE HOURS OF 6:00 A.M. THE DAY BEFORE INDEPENDENCE DAY AND 6:00 P.M. THE DAY AFTER INDEPENDENCE DAY. IF INDEPENDENCE DAY IS ON A FRIDAY, SATURDAY, SUNDAY OR MONDAY; THEN BETWEEN THE HOURS OF 6:00 A.M. THE THURSDAY BEFORE INDEPENDENCE DAY AND 6:00 P.M. THE TUESDAY AFTER INDEPENDENCE DAY.
- FOR LABOR DAY, BETWEEN THE HOURS OF 6:00 A.M. FRIDAY AND 6:00 P.M. TUESDAY.
- FOR THANKSGIVING DAY, BETWEEN THE HOURS OF 6:00 A.M. TUESDAY TO 6:00 P.M. MONDAY.
- FOR CHRISTMAS, BETWEEN THE HOURS OF 6:00 A.M. THE FRIDAY BEFORE THE WEEK OF CHRISTMAS DAY AND 6:00 P.M. THE FOLLOWING TUESDAY AFTER THE WEEK OF CHRISTMAS.

GENERAL NOTES

LANE AND SHOULDER CLOSURE REQUIREMENTS

- LANE CLOSURES ARE REQUIRED WHEN PERSONNEL AND/OR EQUIPMENT ARE WORKING WITHIN ANY PORTION OF A TRAVEL LANE. CONDUCT THE WORK SO THAT ALL PERSONNEL AND/OR EQUIPMENT REMAIN WITHIN THE CLOSED TRAVEL LANE.
  - INSTALL ALL LANE CLOSURES ACCORDING TO THE TRAFFIC CONTROL PLAN, ROADWAY STANDARD DRAWINGS (1101.02), OR AS DIRECTED BY THE ENGINEER.
  - REMOVE LANE CLOSURE DEVICES FROM THE LANE WHEN WORK IS NOT BEING PERFORMED BEHIND THE LANE CLOSURE OR WHEN A LANE CLOSURE IS NO LONGER NEEDED OR AS DIRECTED BY THE ENGINEER.
  - INSTALL LANE CLOSURES WITH THE TRAFFIC FLOW, BEGINNING WITH DEVICES ON THE UPSTREAM SIDE OF TRAFFIC. REMOVE LANE CLOSURES AGAINST THE TRAFFIC FLOW, BEGINNING WITH DEVICES ON THE DOWNSTREAM SIDE OF TRAFFIC.
  - WHEN PERSONNEL AND/OR EQUIPMENT ARE WORKING WITHIN 15 FT OF AN OPEN TRAVEL LANE, CLOSE THE NEAREST OPEN SHOULDER USING ROADWAY STANDARD DRAWING NO. 1101.04 UNLESS THE WORK AREA IS PROTECTED BY BARRIER OR GUARDRAIL OR A LANE CLOSURE IS INSTALLED.
  - WHEN PERSONNEL AND/OR EQUIPMENT ARE WORKING ON THE SHOULDER ADJACENT TO AN UNDIVIDED FACILITY AND WITHIN 5 FT OF AN OPEN TRAVEL LANE, CLOSE THE NEAREST OPEN TRAVEL LANE UNLESS THE WORK AREA IS PROTECTED BY BARRIER OR GUARDRAIL.
  - WHEN PERSONNEL AND/OR EQUIPMENT ARE WORKING ON THE SHOULDER ADJACENT TO A DIVIDED FACILITY AND WITHIN 10 FT OF AN OPEN TRAVEL LANE, CLOSE THE NEAREST OPEN TRAVEL LANE UNLESS THE WORK AREA IS PROTECTED BY BARRIER OR GUARDRAIL.
  - PLACE ARROW PANELS ON THE ROADWAY SHOULDER. IF SHOULDERS DO NOT EXIST, PLACE ARROW PANELS WITHIN THE MERGE TAPER BEHIND THE CHANNELIZING DEVICES OF THE LANE CLOSURE. IF NEEDED, EXTEND LANE CLOSURES TO PROVIDE STOPPING SIGHT DISTANCE TO THE ARROW PANEL (REFER TO ROADWAY STANDARD DRAWING 1101.11 SHEET 2).
  - PLACE LANE CLOSURE DRUMS IN TAPERS AT A MAXIMUM SPACING EQUAL IN FEET TO THE POSTED SPEED LIMIT (MPH). ALONG BUFFER SPACES AND WORK AREAS SPACE DRUMS AT A MAXIMUM SPACING EQUAL IN FEET TO TWICE THE POSTED SPEED LIMIT (MPH). IN ALL CASES, CHANNELIZING DEVICES ARE TO BE SPACED IN SUCH A MANNER AS TO POSITIVELY ACHIEVE THE INTENDED VISUAL CHANNELIZATION. CHANNELIZING DEVICES SHOULD BE Laterally OFFSET 3 FT INSIDE THE CLOSED LANE AS ROOM PERMITS..
- ROAD CLOSURES
- NOTIFY THE ENGINEER TWENTY ONE (21) CALENDAR DAYS PRIOR TO ANY TRAFFIC PATTERN ALTERATION.
  - WHEN CLOSING A ROADWAY OR DRIVEWAY PLACE TYPE III BARRICADES COMPLETELY ACROSS THE ROADWAY OR FROM CURB TO CURB. ATTACH BARRICADE MOUNTED "ROAD CLOSED" SIGN R11-2 AT ALL CLOSURE LOCATIONS. IF LOCAL TRAFFIC IS TO BE MAINTAINED STAGGER THE BARRICADES TO ALLOW ACCESS.

FLAGGER OPERATIONS

- DURING FLAGGER OPERATIONS DO NOT STOP TRAFFIC FOR MORE THAN 5 MINUTES AT A TIME.
- FLAGGER STATIONS SHALL BE LOCATED SUCH THAT APPROACHING TRAFFIC WILL HAVE SUFFICIENT DISTANCE TO STOP AT THE INTENDED STOPPING POINT. IF NEEDED, EXTEND THE LANE CLOSURE SUCH THAT THE FLAGGER STATION IS POSITIONED BEFORE A HORIZONTAL OR CREST VERTICAL CURVE WHERE ADEQUATE STOPPING SIGHT DISTANCE TO THE FLAGGER IS PROVIDED. REFER TO ROADWAY STANDARD DRAWING 1101.11 SHEET 2.
- FLAGGERS SHALL NOT STAND IN THE ROADWAY.
- USE FLAGGERS TO CONTROL VEHICLES AT INTERSECTIONS OR RAILROAD GRADE CROSSINGS AFFECTED BY THE LANE CLOSURE. USE FLAGGER SIGN W20-7A IN ADVANCE OF ALL FLAGGER STATIONS. WHEN AN INTERSECTION IS SIGNALIZED HAVE AUTHORIZED PERSONNEL PLACE THE SIGNAL IN FLASH MODE WHEN DIRECTED BY THE ENGINEER.
- FLAGGER STATIONS SHALL BE ILLUMINATED AT NIGHT.
- PLACE CHANNELIZING DEVICES FOR FLAGGER OPERATION LANE CLOSURES AT A MAXIMUM SPACING OF 20 FEET IN TAPERS AND AT A MAXIMUM SPACING OF 80 FEET ALONG THE BUFFER SPACE AND WORK AREA.
- CONES OR SKINNY DRUMS MAY BE USED INSTEAD OF DRUMS DURING FLAGGING OPERATIONS AT NO ADDITIONAL COST.
- USE PILOT VEHICLES IN CONJUNCTION WITH FLAGGERS WHEN SHOWN IN THE PLAN OR WHEN DIRECTED BY THE ENGINEER. MOUNT SIGN G20-4 "PILOT CAR FOLLOW ME" AT A VISIBLE LOCATION ON THE REAR OF PILOT VEHICLES.
- ADVISE RESIDENTS AND BUSINESSES AFFECTED BY THE LANE CLOSURE ABOUT METHODS OF SAFE INGRESS AND EGRESS FROM DRIVEWAYS DURING FLAGGING AND PILOT CAR OPERATIONS.

MISCELLANEOUS

- ALL DIMENSIONS AND STATIONS IN THE TRAFFIC CONTROL PLAN AND PHASING ARE APPROXIMATE (+/-); FIELD ADJUST AS NECESSARY OR AS DIRECTED BY THE ENGINEER.
- MAINTAIN DRIVEWAY ACCESS AT ALL TIMES, UNLESS OTHERWISE DIRECTED BY ENGINEER.
- ENSURE THE OVERSIZE/OVERWEIGHT PERMIT UNIT (919) 733-4740 HAS BEEN ADVISED OF THE ONGOING TRAFFIC OPERATIONS THROUGH THE DIVISION OFFICE.
- DO NOT PERFORM WORK FROM THE ROADWAY ON TOP OF ANY BRIDGE.



Stantec Consulting Services Inc.  
801 Jones Franklin Road  
Suite 300  
Raleigh, NC 27606  
Tel. (919) 851-6866  
Fax. (919) 851-7024  
www.stantec.com  
License No. F-0672

SEAL

*Boyd Watson*  
10/1/10  
SIGNATURE DATE

GENERAL NOTES

SCALE: NONE  
DATE: AUG 2010  
DWG. BY: GK  
DESIGN BY: GK  
REVIEWED BY: BLW



REVISIONS	

CADD FILE

## TRAFFIC CONTROL PHASING

PERFORM BRIDGE PAINTING OPERATIONS AS FOLLOWS:

DO NOT WORK AT MORE THAN ONE BRIDGE LOCATION AT A TIME.

DO NOT INSTALL MORE THAN 1 LANE CLOSURE AT A TIME.

BRIDGE NO. 77 AND 78 US 17 / US 70 OVER WALMART SERVICE ROAD

FOR PAINT OPERATIONS OVER WALMART SERVICE ROAD, USE ROAD CLOSURES [TCP-4].

BRIDGE NO. 79 AND 80 US 17 / US 70 OVER TRENT ROAD

FOR PAINT OPERATIONS OVER TRENT ROAD, USE FLAGGER OPERATION CLOSURES [TCP-5, 5A].

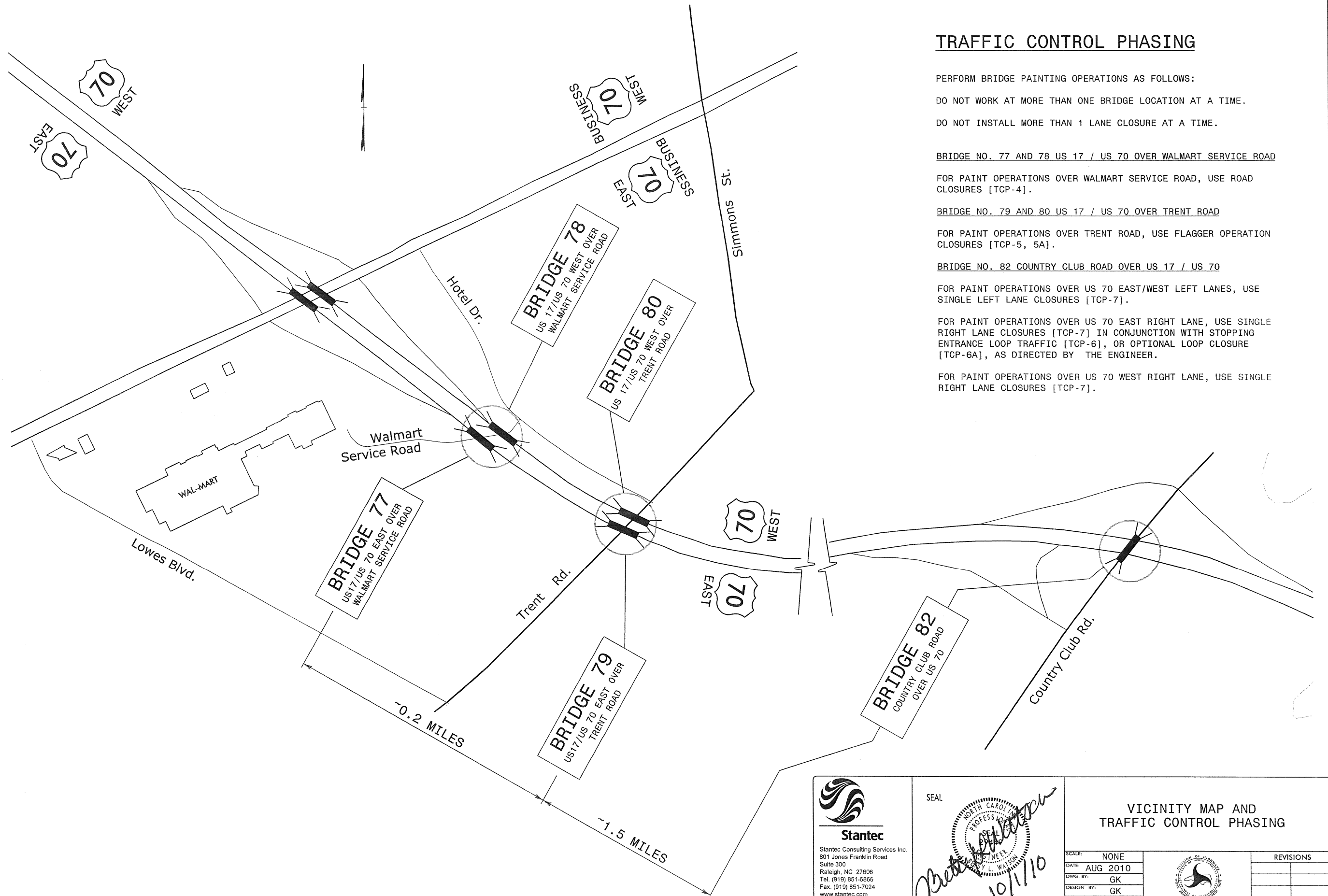
BRIDGE NO. 82 COUNTRY CLUB ROAD OVER US 17 / US 70

FOR PAINT OPERATIONS OVER US 70 EAST/WEST LEFT LANES, USE SINGLE LEFT LANE CLOSURES [TCP-7].

FOR PAINT OPERATIONS OVER US 70 EAST RIGHT LANE, USE SINGLE RIGHT LANE CLOSURES [TCP-7] IN CONJUNCTION WITH STOPPING ENTRANCE LOOP TRAFFIC [TCP-6], OR OPTIONAL LOOP CLOSURE [TCP-6A], AS DIRECTED BY THE ENGINEER.

FOR PAINT OPERATIONS OVER US 70 WEST RIGHT LANE, USE SINGLE RIGHT LANE CLOSURES [TCP-7].

9/28/2010  
Us:\TrafficControl\BK-5102P Craven 77, 78, 79, 80, 82\TCP\Plan Sheets\BK-5102P\_tcp.psh.03.dgn  
gkorgeorge



**Stantec**  
Stantec Consulting Services Inc.  
801 Jones Franklin Road  
Suite 300  
Raleigh, NC 27606  
Tel. (919) 851-6866  
Fax. (919) 851-7024  
www.stantec.com  
License No. F-0672

SEAL

*Betty L. Watson*  
10/1/10  
SIGNATURE DATE

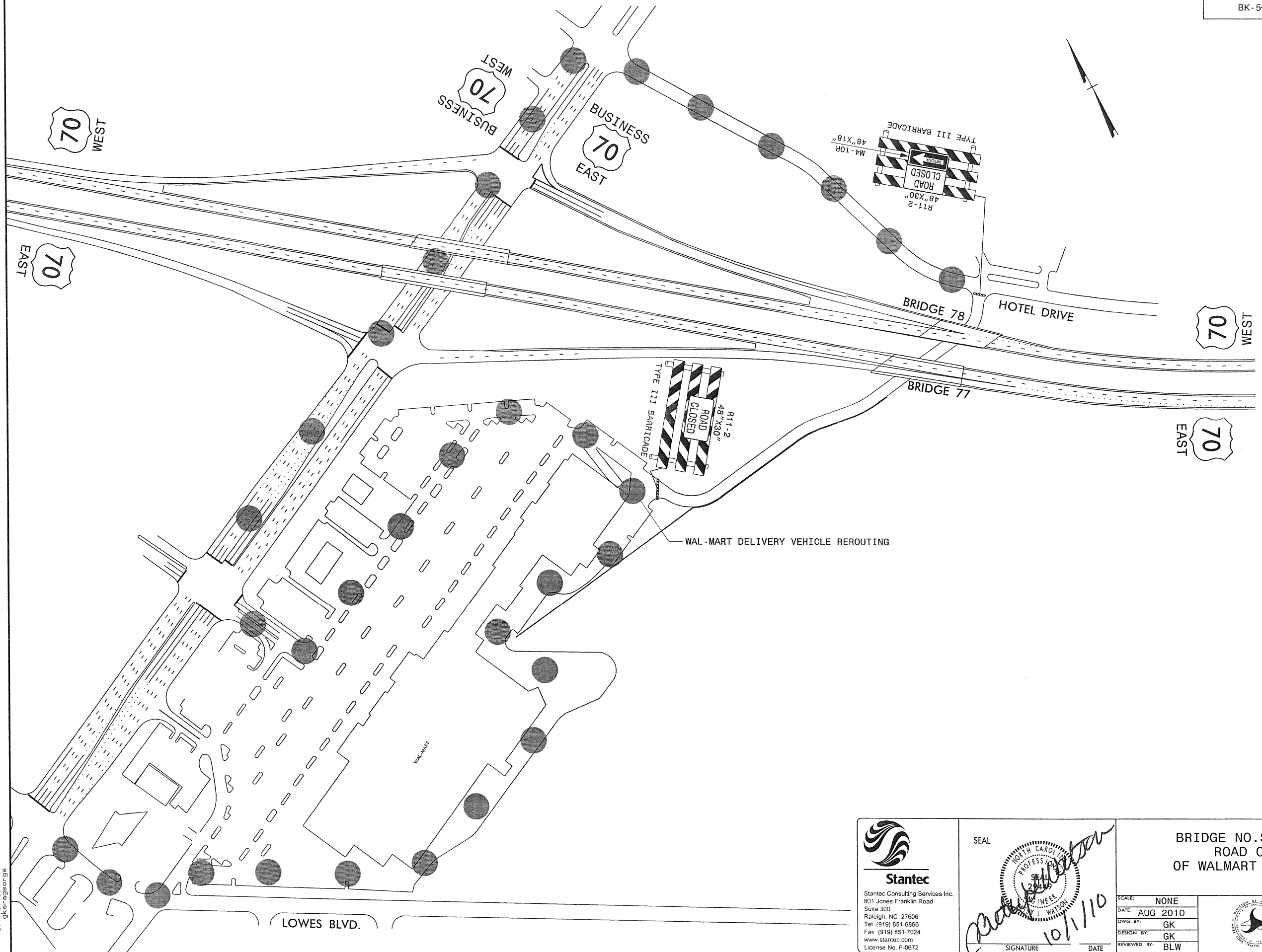
### VICINITY MAP AND TRAFFIC CONTROL PHASING

SCALE: NONE  
DATE: AUG 2010  
DWG. BY: GK  
DESIGN BY: GK  
REVIEWED BY: BLW

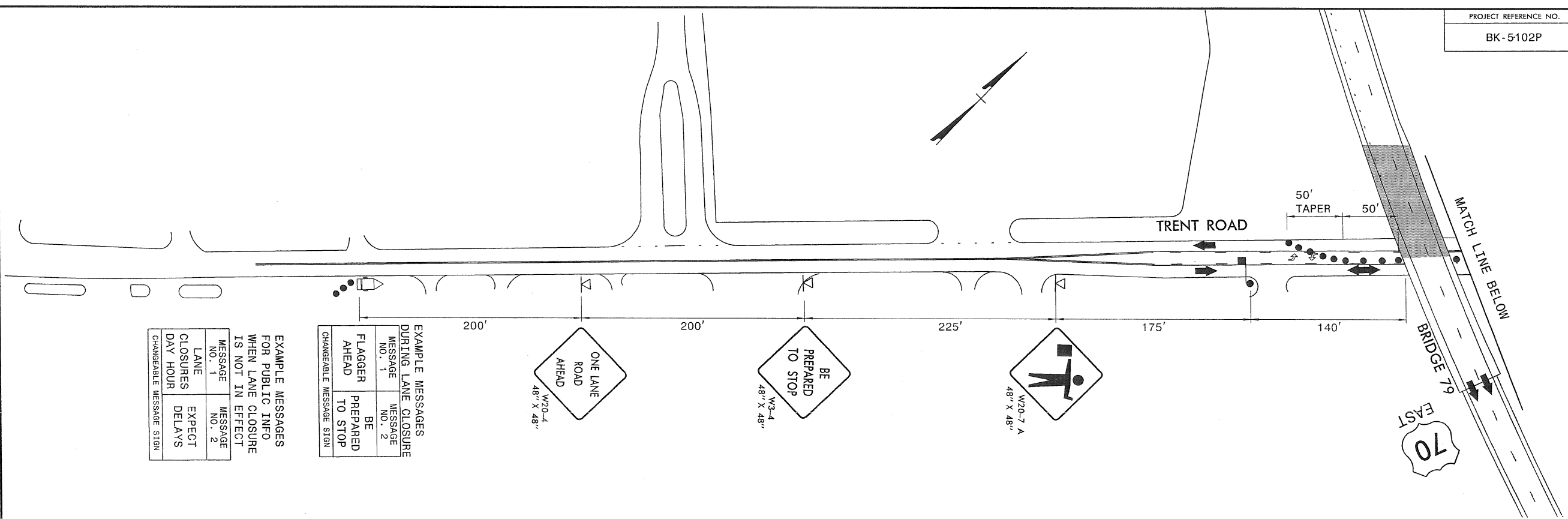


REVISIONS	

9/28/2010  
 Us:\TrafficControl\BK-5102P Craven 77, 78, 79, 80, 82\TCP\Plan Sheets\BK-5102P.tc.psh.04.dgn  
 gkarageorge

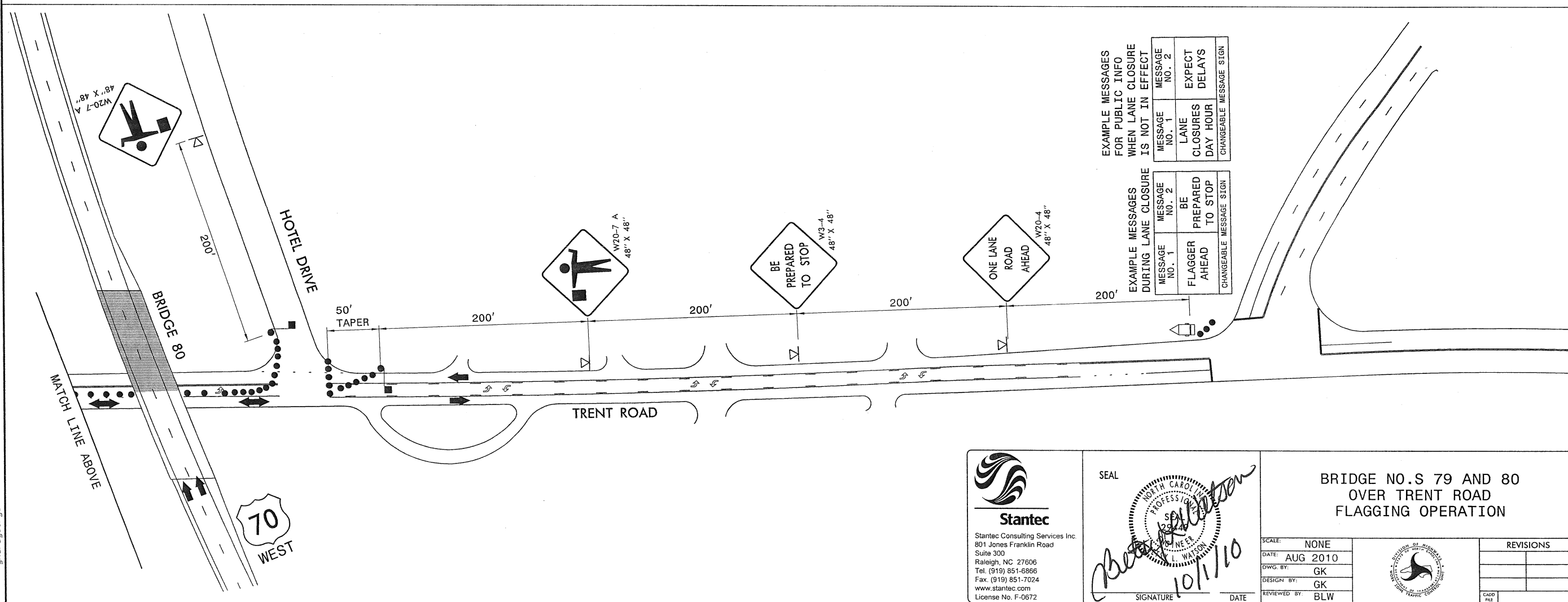


 <b>Stantec</b> Stantec Consulting Services Inc. 801 Jones Franklin Road Suite 300 Raleigh, NC 27606 Tel (919) 851-6866 Fax (919) 851-7024 www.stantec.com License No. F-0872	SEAL  SIGNATURE <i>K. L. Watson</i> DATE <i>10/1/10</i>	<b>BRIDGE NOS 77 AND 78          ROAD CLOSURE          OF WALMART SERVICE RD.</b>							
		SCALE: NONE DATE: AUG 2010 DWG. BY: GK DESIGN BY: GK REVIEWED BY: BLW	REVISIONS <table border="1"> <tr><td> </td><td> </td></tr> <tr><td> </td><td> </td></tr> <tr><td> </td><td> </td></tr> <tr><td> </td><td> </td></tr> </table>						



EXAMPLE MESSAGES DURING LANE CLOSURE			
MESSAGE NO. 1	MESSAGE NO. 2	MESSAGE NO. 1	MESSAGE NO. 2
FLAGGER AHEAD	BE PREPARED TO STOP	FLAGGER AHEAD	BE PREPARED TO STOP
CHANGEABLE MESSAGE SIGN			

EXAMPLE MESSAGES FOR PUBLIC INFO WHEN LANE CLOSURE IS NOT IN EFFECT			
MESSAGE NO. 1	MESSAGE NO. 2	MESSAGE NO. 1	MESSAGE NO. 2
LANE CLOSURES	EXPECT DELAYS	LANE CLOSURES	EXPECT DELAYS
CHANGEABLE MESSAGE SIGN			



EXAMPLE MESSAGES FOR PUBLIC INFO WHEN LANE CLOSURE IS NOT IN EFFECT			
MESSAGE NO. 1	MESSAGE NO. 2	MESSAGE NO. 1	MESSAGE NO. 2
LANE CLOSURES	EXPECT DELAYS	LANE CLOSURES	EXPECT DELAYS
CHANGEABLE MESSAGE SIGN			

EXAMPLE MESSAGES DURING LANE CLOSURE			
MESSAGE NO. 1	MESSAGE NO. 2	MESSAGE NO. 1	MESSAGE NO. 2
FLAGGER AHEAD	BE PREPARED TO STOP	FLAGGER AHEAD	BE PREPARED TO STOP
CHANGEABLE MESSAGE SIGN			

9/28/2010  
Us:Traffic\TrafficControl\BK-5102P Craven 77, 78, 79, 80, 82\TCP\Plan Sheets\BK-5102P-te.psh.05.dgn  
gkarageorge

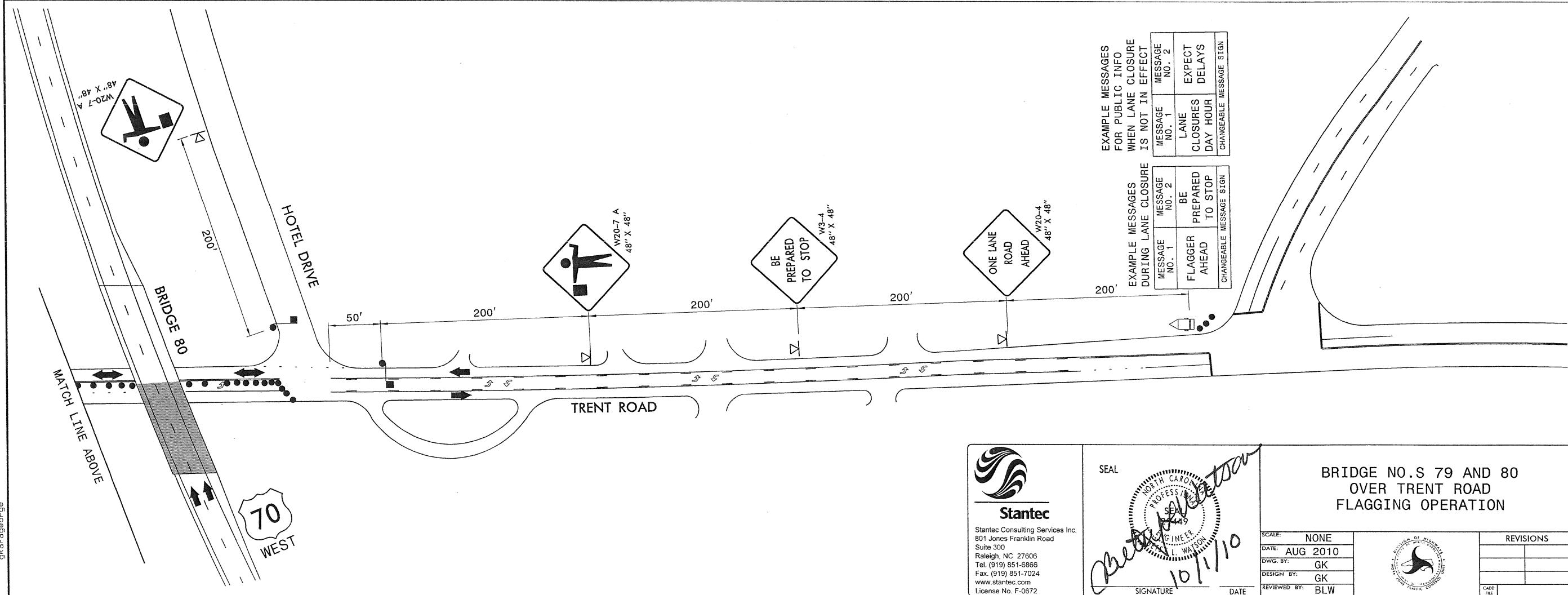
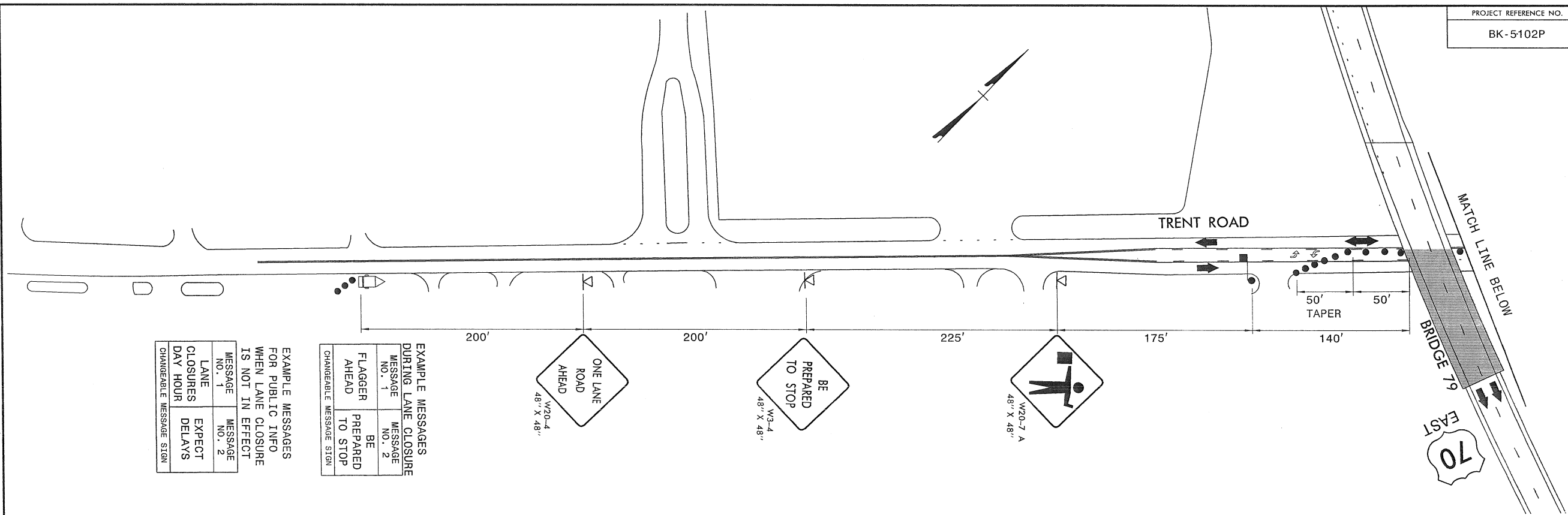
Stantec Consulting Services Inc.  
801 Jones Franklin Road  
Suite 300  
Raleigh, NC 27606  
Tel. (919) 851-6866  
Fax. (919) 851-7024  
www.stantec.com  
License No. F-0672

SEAL

**BRIDGE NO.S 79 AND 80  
OVER TRENT ROAD  
FLAGGING OPERATION**

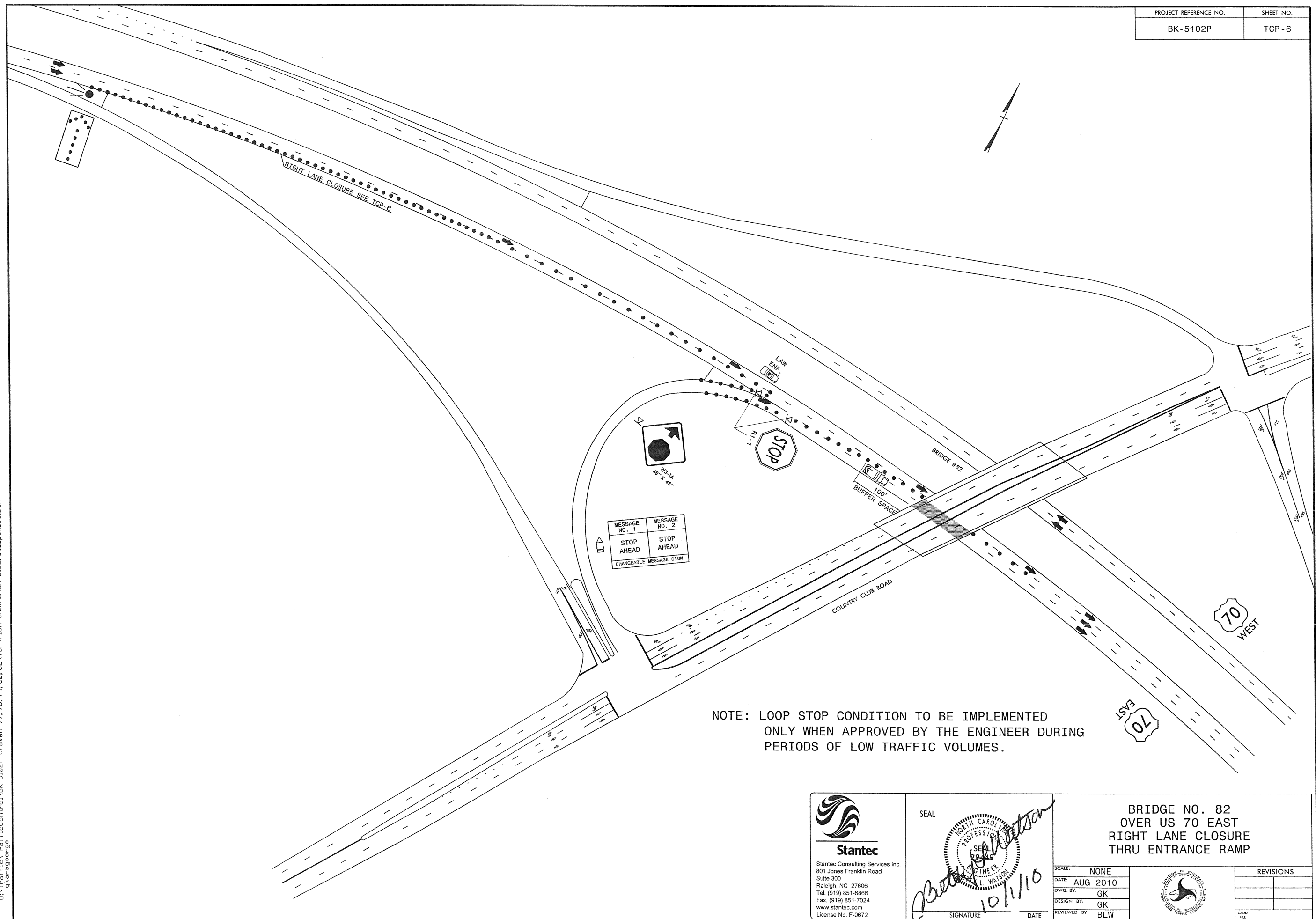
SCALE:	NONE
DATE:	AUG 2010
DWG. BY:	GK
DESIGN BY:	GK
REVIEWED BY:	BLW

REVISIONS	



9/28/2010  
U:\TrafficControl\BK-5102P Craven 77, 78, 79, 80, 82\TCP\Plan Sheets\BK-5102P-to-psh\_05A.dgn  
gkarageorge

 <b>Stantec</b> Stantec Consulting Services Inc. 801 Jones Franklin Road Suite 300 Raleigh, NC 27606 Tel. (919) 851-6866 Fax. (919) 851-7024 www.stantec.com License No. F-0672	SEAL  10/1/10 SIGNATURE DATE	BRIDGE NO.S 79 AND 80 OVER TRENT ROAD FLAGGING OPERATION	
		SCALE: NONE DATE: AUG 2010 DWG. BY: GK DESIGN BY: GK REVIEWED BY: BLW	 REVISIONS CADD FILE

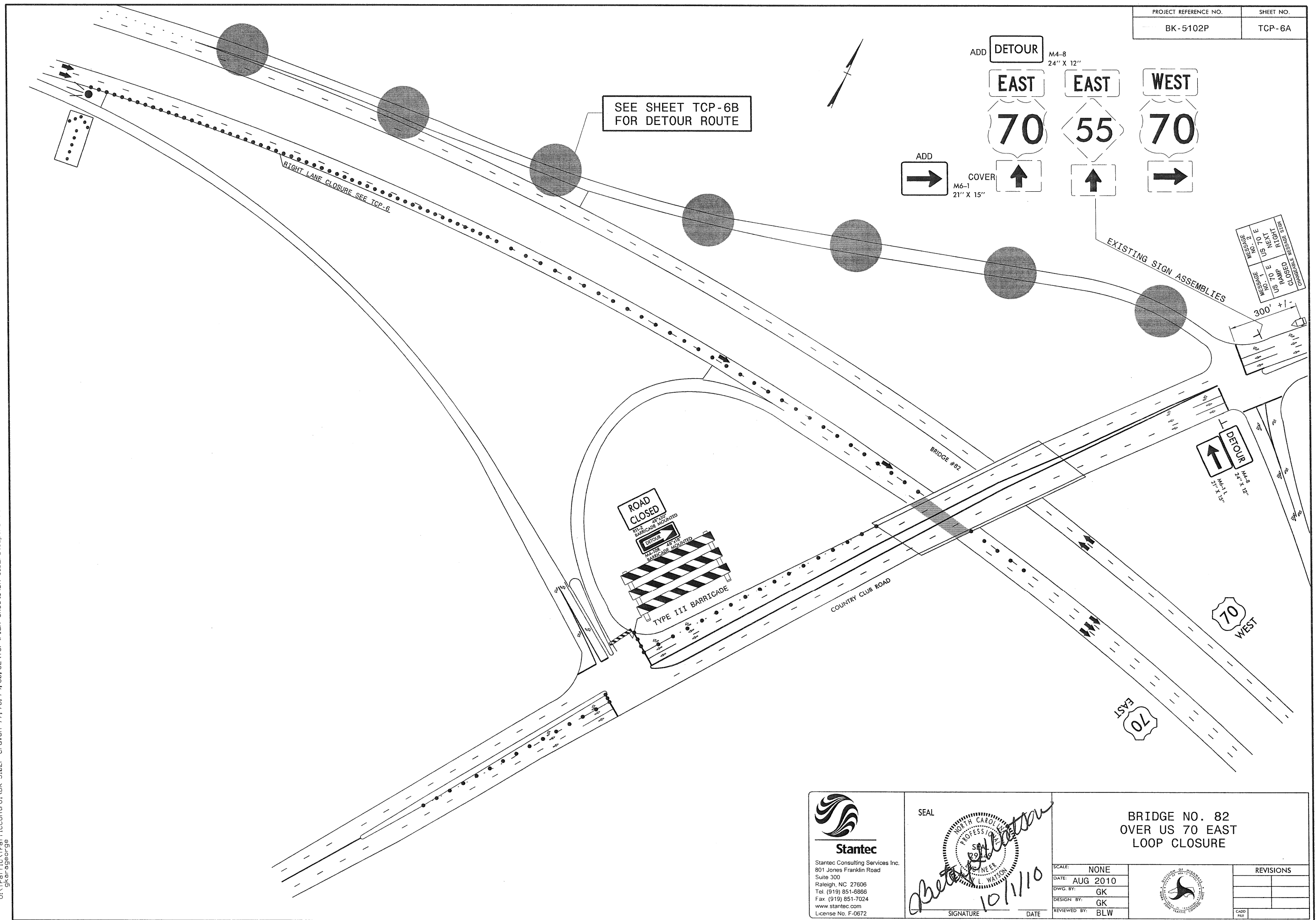



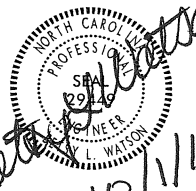

9/28/2010  
U:\TrafficControl\BK-5102P Craven 77, 78, 79, 80, 82\TCP\Plan Sheets\BK-5102P-to.psh\_06.DGN  
gkoroged

 <b>Stantec</b> Stantec Consulting Services Inc. 801 Jones Franklin Road Suite 300 Raleigh, NC 27606 Tel. (919) 851-6866 Fax. (919) 851-7024 www.stantec.com License No. F-0672	SEAL  10/1/10 SIGNATURE	BRIDGE NO. 82 OVER US 70 EAST RIGHT LANE CLOSURE THRU ENTRANCE RAMP		 DIVISION OF HIGHWAYS NORTH CAROLINA DEPARTMENT OF TRANSPORTATION	REVISIONS <table border="1"> <tr><td> </td><td> </td></tr> <tr><td> </td><td> </td></tr> <tr><td> </td><td> </td></tr> <tr><td> </td><td> </td></tr> </table>								
SCALE: NONE DATE: AUG 2010 DWG. BY: GK DESIGN BY: GK REVIEWED BY: BLW	CADD FILE												

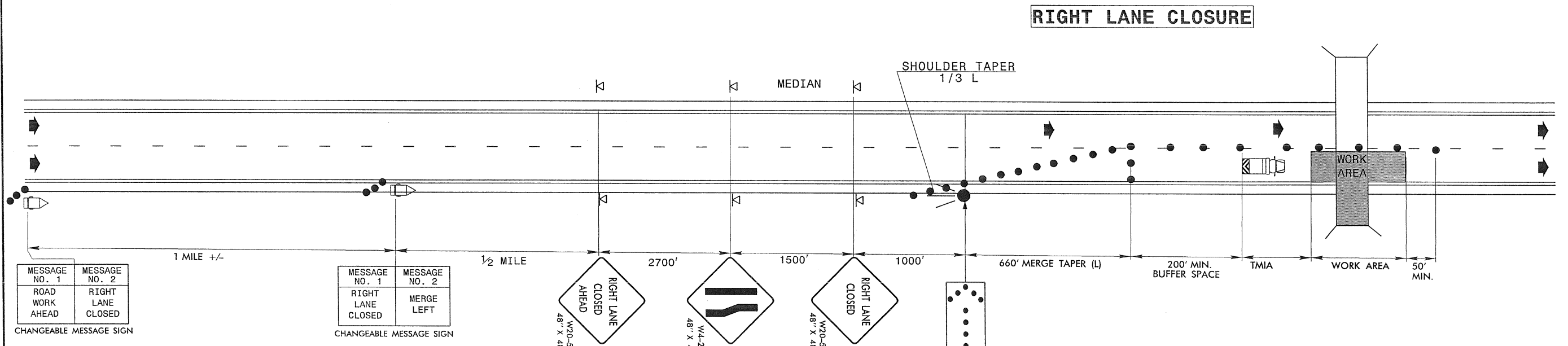
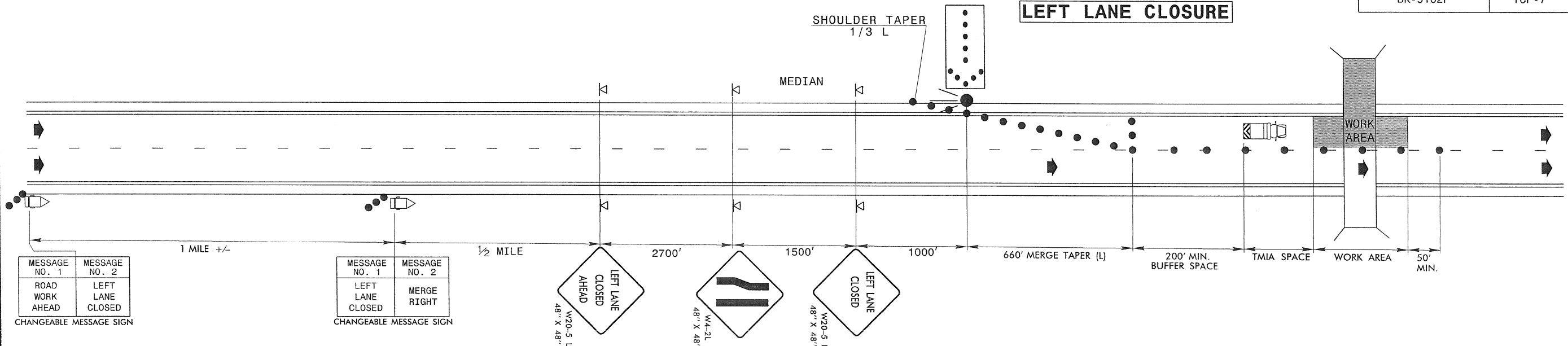


9/28/2010  
U:\TrafficControl\BK-5102P Craven 77, 78, 79, 80, 82\TCP\Plan Sheets\BK-5102P.tc.psh.06A.DGN  
gkarageorge



 <b>Stantec</b> Stantec Consulting Services Inc. 801 Jones Franklin Road Suite 300 Raleigh, NC 27606 Tel. (919) 851-6866 Fax (919) 851-7024 www.stantec.com License No. F-0672	 10/1/10 10/1/10	BRIDGE NO. 82 OVER US 70 EAST LOOP CLOSURE	
		SCALE: NONE DATE: AUG 2010 DWG. BY: GK DESIGN BY: GK REVIEWED BY: BLW	 REVISIONS CADD FILE





9/28/2010  
 U:\Traffic\TrafficControl\BK-5102P Craven 77, 78, 79, 80, 82\TCP\Plan Sheets\BK-5102P - to psh-07.dgn  
 gkarageorge

**Stantec**  
 Stantec Consulting Services Inc.  
 801 Jones Franklin Road  
 Suite 300  
 Raleigh, NC 27606  
 Tel. (919) 851-6866  
 Fax. (919) 851-7024  
 www.stantec.com  
 License No. F-0672

SEAL

*J. L. Watson*  
 10/1/10  
 SIGNATURE      DATE

## TEMPORARY LANE CLOSURES

SCALE:	NONE
DATE:	AUG 2010
DWG. BY:	GK
DESIGN BY:	GK
REVIEWED BY:	BLW

REVISIONS	