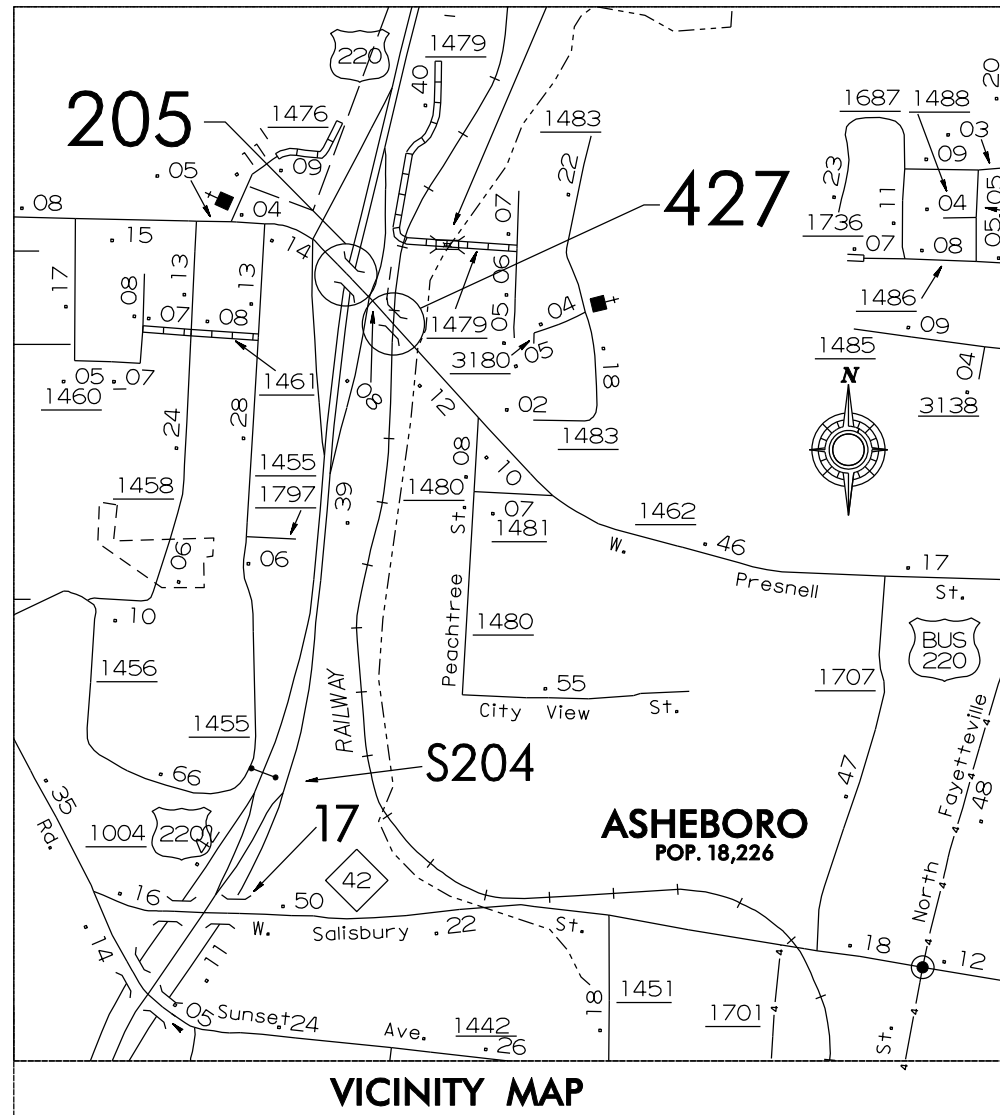


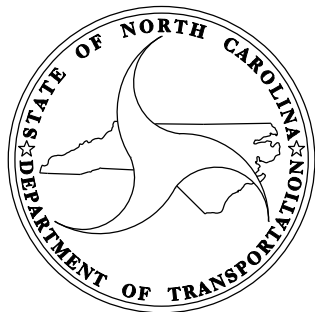
BK-5101 Q

CONTRACT #: D000068



VICINITY MAP

INDEX OF SHEETS	
1	TITLE SHEET
S1 - S7	STRUCTURE PLANS
TCP1 - TCP4	TRAFFIC CONTROL PLANS



DESIGN DATA

BRIDGE 205
ADT 2007 = 3900

BRIDGE 427
ADT 2007 = 3900

PROJECT LENGTH

BRIDGE #205
LENGTH STRUCTURE PROJECT = .045 MILE

BRIDGE #427
LENGTH STRUCTURE PROJECT = .037 MILE

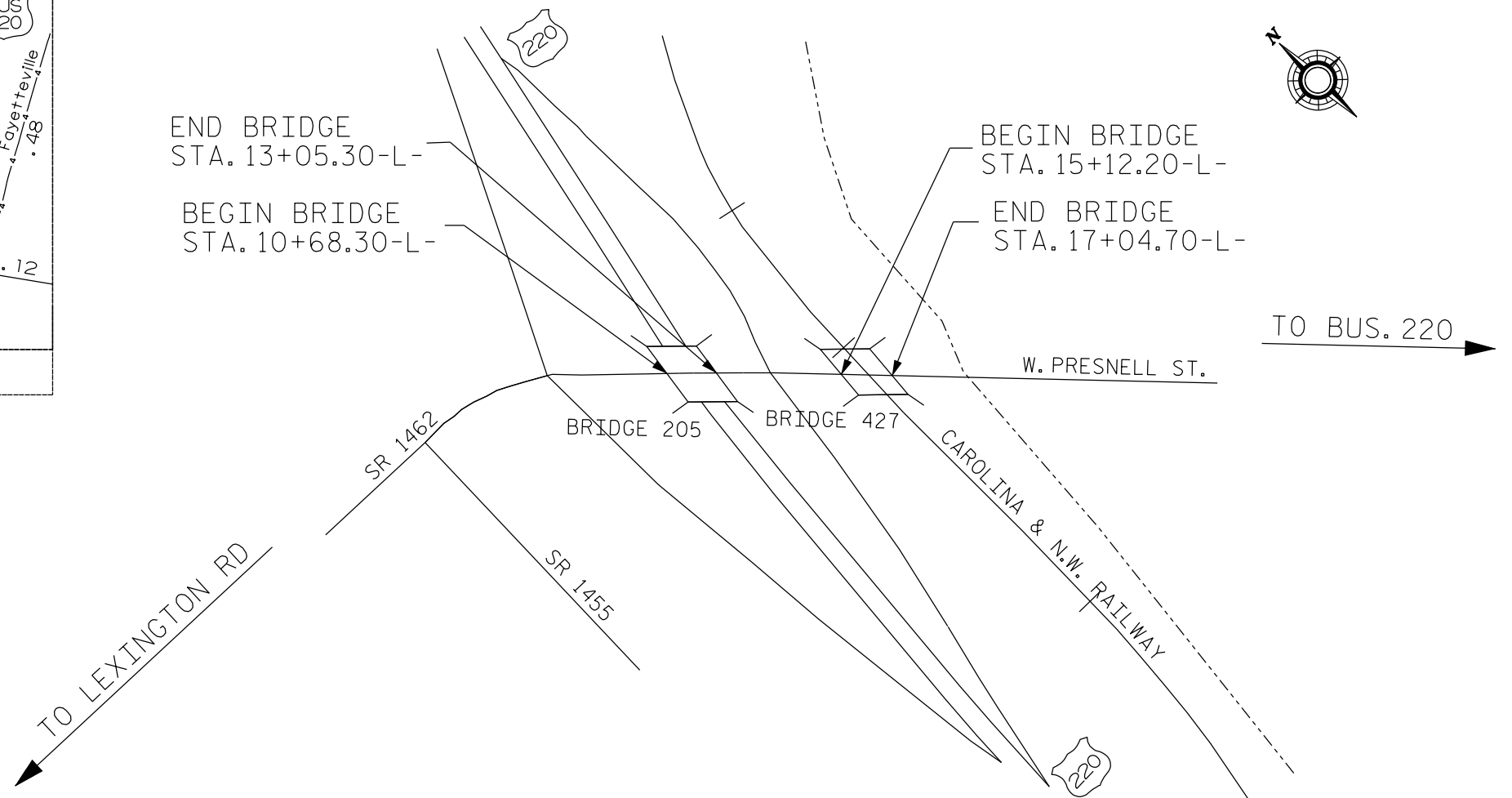
STATE OF NORTH CAROLINA
DIVISION OF HIGHWAYS

RANDOLPH COUNTY

LOCATION: BRIDGE #205, ON SR 1462 (PRESNELL ST.),
OVER US 220

BRIDGE #427, ON SR 1462 (PRESNELL ST.),
OVER CAROLINA & N.W. RAILWAY

TYPE OF WORK: BRIDGE DECK REHABILITATION WITH
LATEX MODIFIED CONCRETE, AND
PAVEMENT MARKING

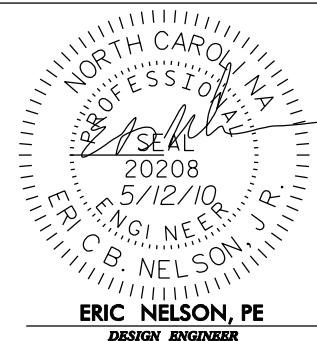


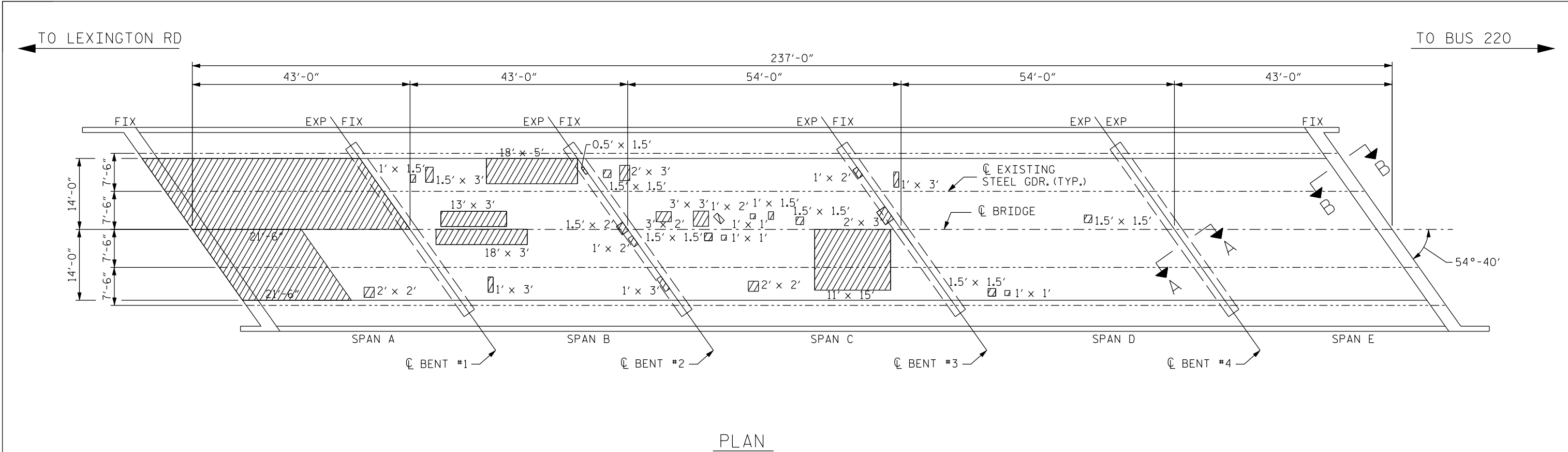
STATE	STATE PROJECT REFERENCE NO.	SHEET NO.	TOTAL SHEETS
N.C.	BK-5101 Q	1	12
STATE PROJ. NO.		F.A. PROJ. NO.	DESCRIPTION
42579.1.1		BRZ-1462 (2)	PE
42579.3.15		BRZ-1462 (2)	CONST

Prepared in the Office of:
DIVISION OF BRIDGE MANAGEMENT
2006 STANDARD SPECIFICATIONS

LETTING DATE:
JULY 22, 2010

DAN HOLDERMAN, PE
PROJECT ENGINEER





PLAN

- APPROX. AREA: CLASS II REPAIR
- APPROX. TEST BORING LOCATION

NOTES

FOR OVERLAY OF BRIDGE WITH LATEX MODIFIED CONCRETE VERY EARLY STRENGTH,SEE SPECIAL PROVISIONS.

SEE SPECIAL PROVISIONS FOR SURFACE PREPARATION.

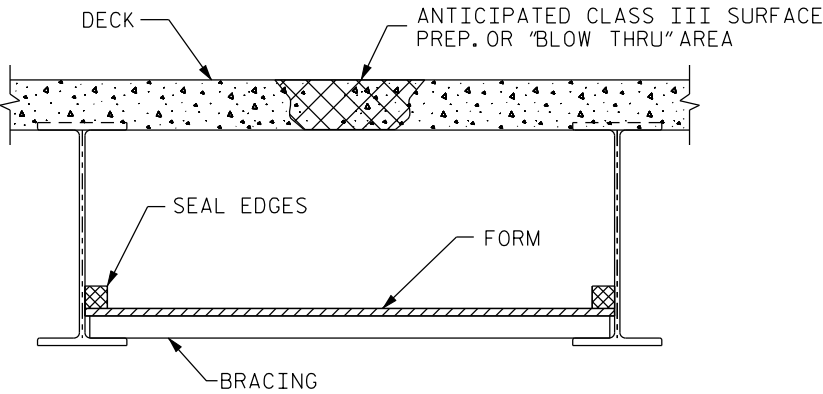
FOR HYDRO-DEMOLITION,SEE SPECIAL PROVISIONS .

FOR UNDER DECK CONTAINMENT SEE SPECIAL PROVISIONS.

THE CONTRACTOR MUST COLLECT,TREAT AND DISPOSE OF RUN -OFF WATER FROM THE HYDRO- DEMOLITION PROCESS, SEE SPECIAL PROVISIONS.

THE BOUNDARIES OF AREAS IDENTIFIED FOR CLASS III SURFACE PREPARATION ARE APPROXIMATE.

FOR EVAZOTE JOINT SEALS,SEE SPECIAL PROVISIONS.

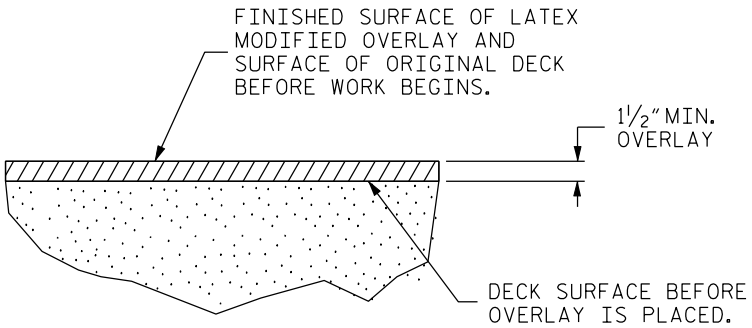


TYP. "BLOW THRU" CONTAINMENT AND FORMWORK

A METHOD TO CAPTURE WATER AND DEBRIS FROM BLOW THRU DURING HYDRO-DEMOLITION SHALL BE INSTALLED IN AREAS INDICATED AS CLASS III SURFACE PREPARATION.

SUBMIT DETAILS OF PROPOSED FORM WORK FOR APPROVAL PRIOR TO BEGINNING WORK.

COST FOR INSTALLING AND REMOVING FORM WORK SHALL BE INCIDENTAL TO THE PRICE PER SQ. YARD OF HYDRO-DEMOLITION.



DETAIL FOR LATEX MODIFIED CONCRETE OVERLAY

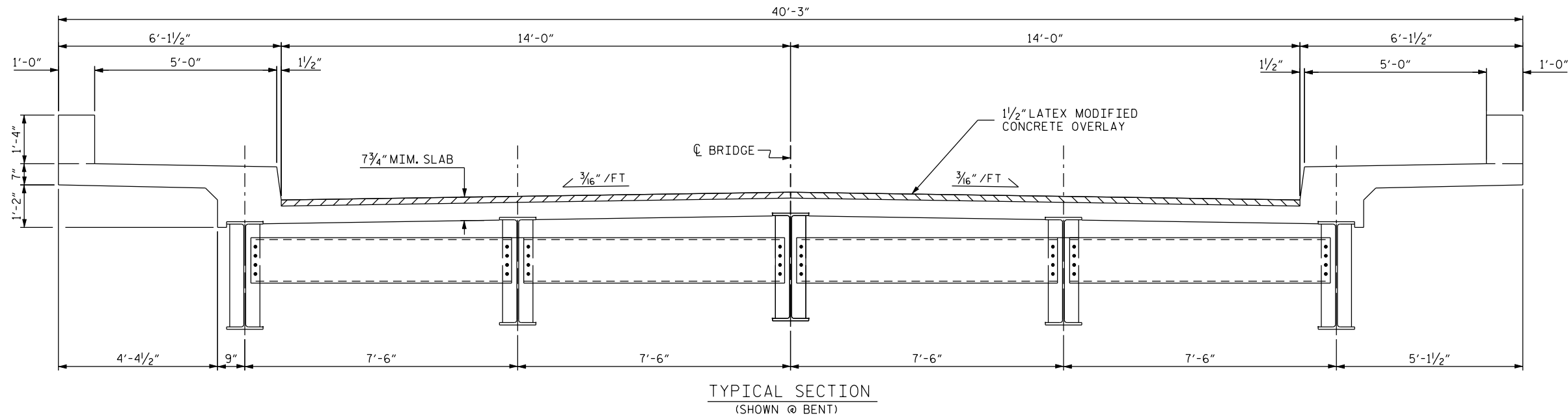
TOTAL BILL OF MATERIAL									
** SCARIFYING BRIDGE DECK	* CLASS I SURFACE PREPARATION	* CLASS II SURFACE PREPARATION	* CLASS III SURFACE PREPARATION	HYDRO-DEMOLITION	LATEX MODIFIED CONCRETE VERY EARLY STRENGTH	PLACING & FINISHING LATEX MODIFIED CONCRETE VERY EARLY STRENGTH	EVAZOTE JOINT SEALS	GROOVING BRIDGE FLOOR	ASPHALT CONCRETE SURFACE COURSE TYPE SF 9.5A
SQ.YDS.	SQ.YDS.	SQ.YDS.	SQ.YDS.	SQ.YDS.	C.Y.	SQ.YDS.	LUMP SUM	SQ. FT.	TONS
923	680	57	0	737	41	737	LUMP SUM	6636	31

* QUANTITY SHOWN IS FOR INFORMATION ONLY. ** INCLUDES APPROACH MILLING.

PROJECT NO. BK-5101 Q
COUNTY: RANDOLPH
DECK REPAIR BRIDGE NO. 205

STATE OF NORTH CAROLINA DEPARTMENT OF TRANSPORTATION RALEIGH					
PLAN VIEW OF BRIDGE #205 ON SR 1462 OVER US 220 28' CL. ROADWAY 54°-40' SKEW					
REVISIONS					SHEET NO. S-1
NO.	BY	DATE	NO.	BY	
1			3		TOTAL SHEETS 7
2			4		

DRAWN BY: CLB DATE: 05/10
CHECKED BY: EBN DATE: 05/10



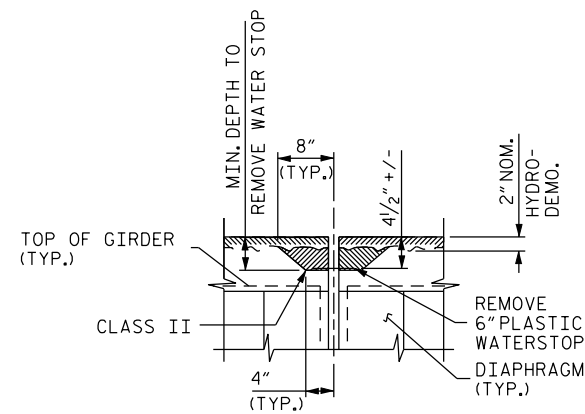
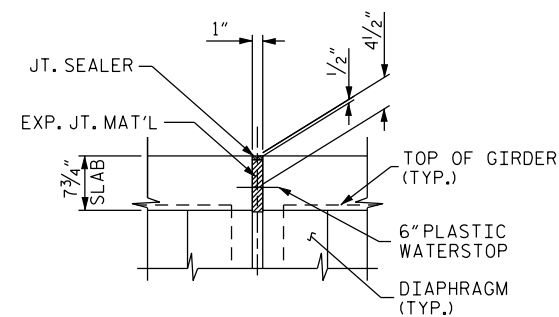
NOTES

FOR EVAZOTE JOINT SEAL, SEE SPECIAL PROVISIONS.

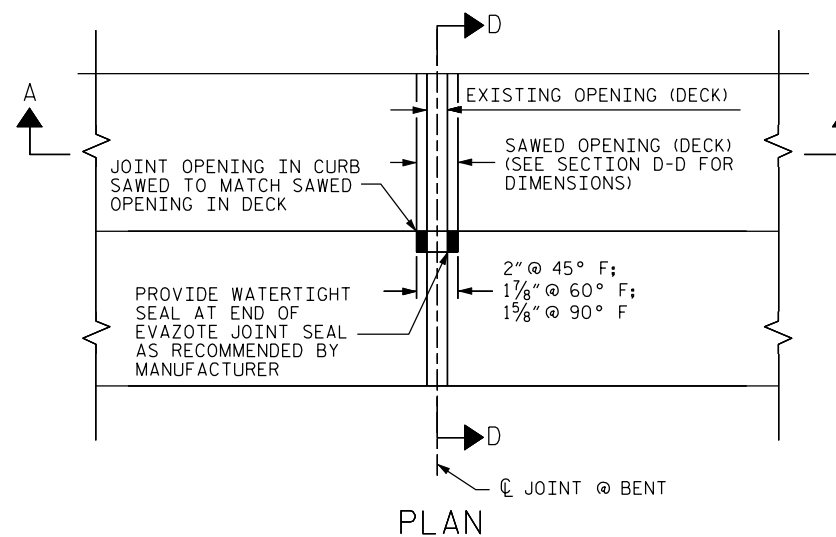
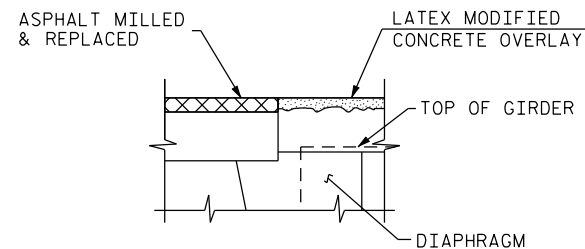
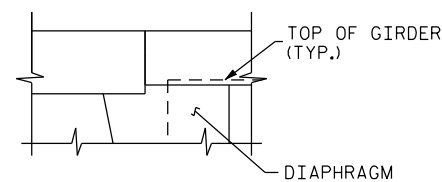
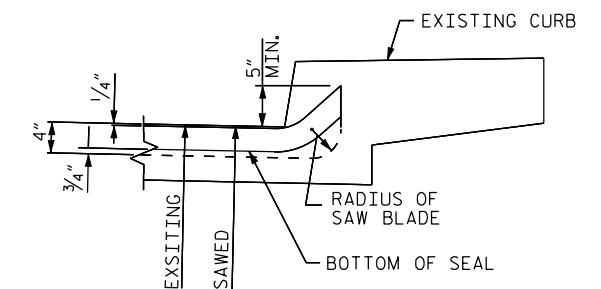
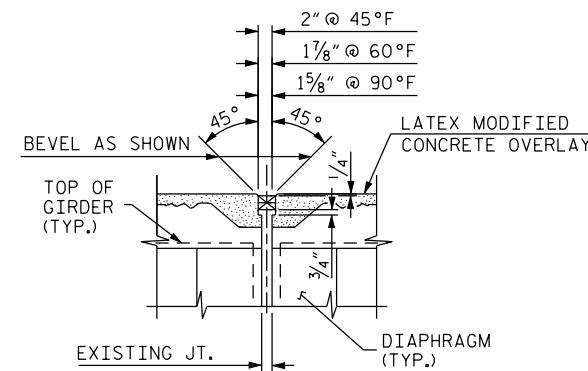
THE INSTALLED EVAZOTE JOINT SEALS SHALL BE WATERTIGHT.

NOMINAL UNCOMPRESSED SEAL WIDTH OF EVAZOTE JOINT SEAL SHALL BE 2 1/2" AT BENTS.

THE CONTRACTOR WILL NOT BE PERMITTED TO FORM THE JOINT FOR THE EVAZOTE JOINT SEAL IN LIEU OF SAWING THE JOINT.



NOTE: RETAIN ALL EXISTING REINF. STEEL. CLEAN AND REPAIR AS REQ'D.



PROJECT NO. BK-5101 Q
COUNTY: RANDOLPH
DECK REPAIR BRIDGE NO. 205

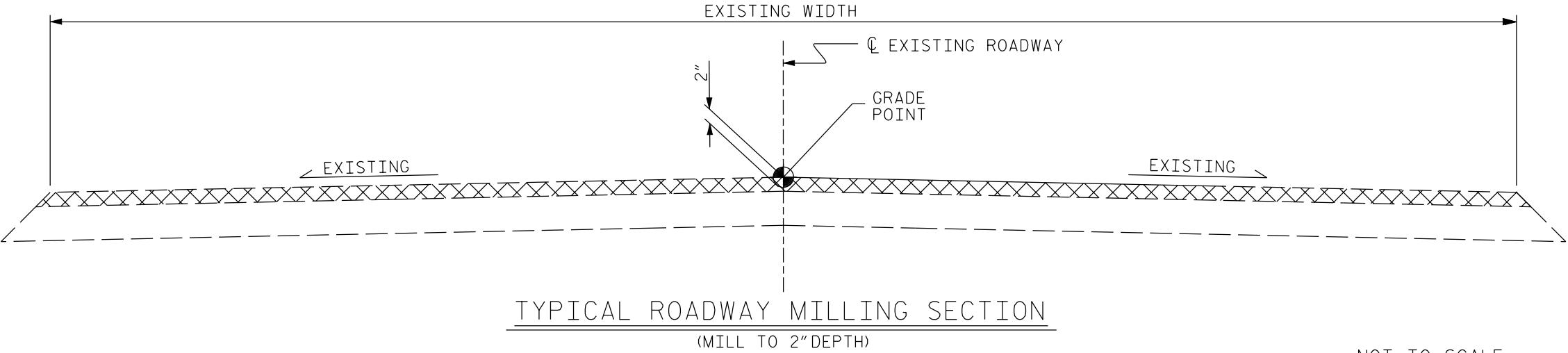
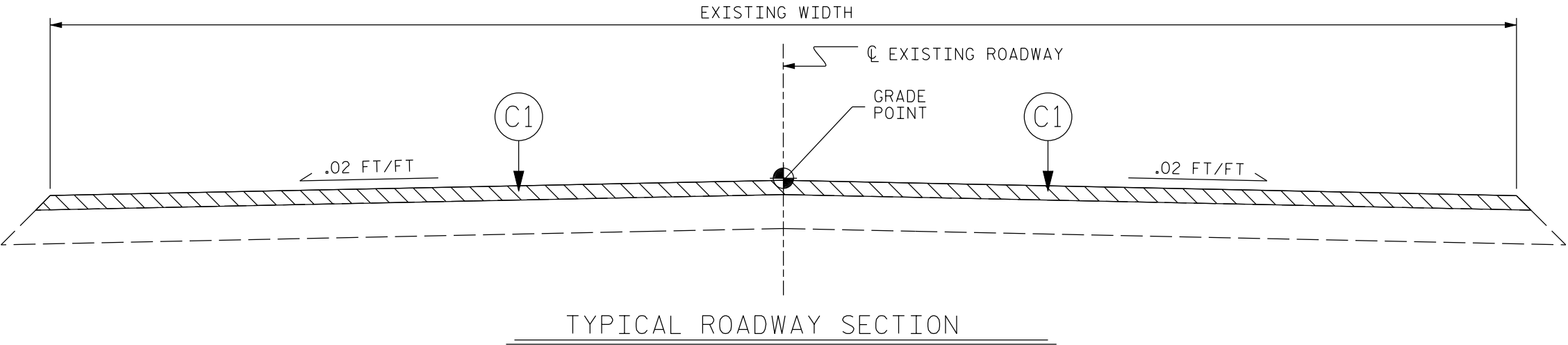
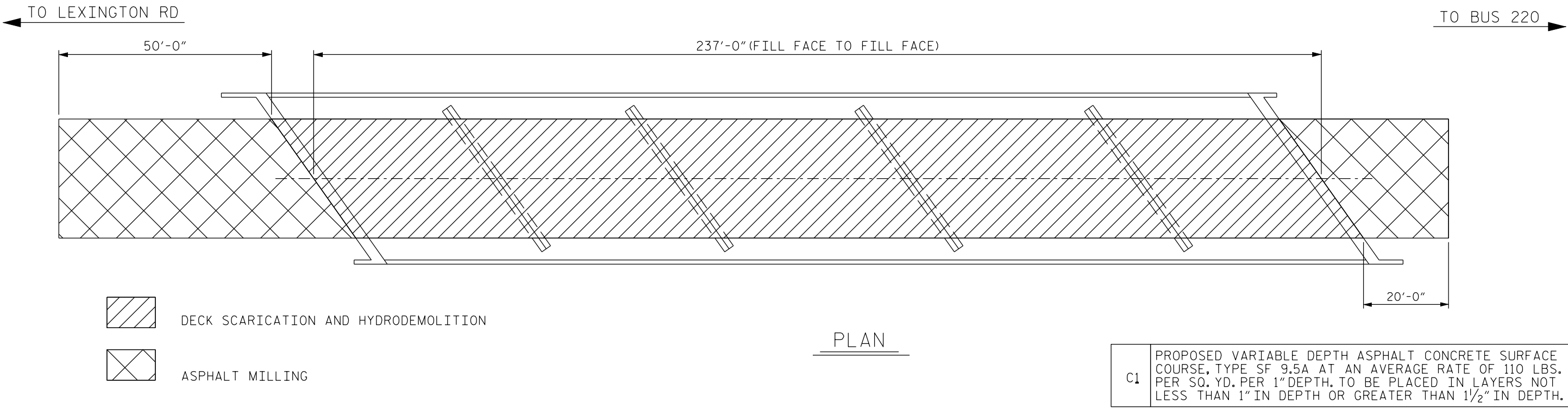
STATE OF NORTH CAROLINA
DEPARTMENT OF TRANSPORTATION
RALEIGH

TYPICAL SECTION
&
JOINT DETAILS

REVISIONS						SHEET NO.
NO.	BY	DATE	NO.	BY	DATE	
1			3			S-2
2			4			
TOTAL SHEETS						7

DRAWN BY: CLB DATE: 05/10
CHECKED BY: EBN DATE: 05/10

*****USERNAME***** *****SYTIME*****



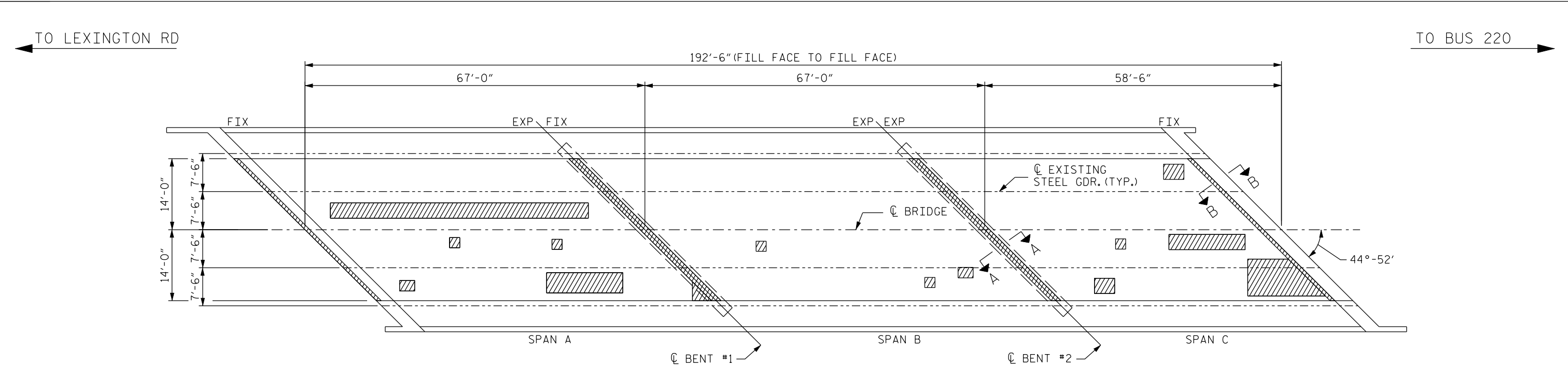
NOT TO SCALE

PROJECT NO. BK-5101 Q
COUNTY: RANDOLPH
DECK REPAIR BRIDGE NO. 205

STATE OF NORTH CAROLINA
DEPARTMENT OF TRANSPORTATION
RALEIGH
ROADWAY TYPICAL
SECTION AND
MILLING DETAILS

REVISIONS						SHEET NO.
NO.	BY	DATE	NO.	BY	DATE	S-3
1			3			TOTAL SHEETS
2			4			7

DRAWN BY: CLB DATE: 5/10
CHECKED BY: EBN DATE: 5/10



PLAN

- APPROX. AREA: CLASS II REPAIR
- APPROX. TEST BORING LOCATION

NOTES

FOR OVERLAY OF BRIDGE WITH LATEX MODIFIED CONCRETE VERY EARLY STRENGTH, SEE SPECIAL PROVISIONS.

SEE SPECIAL PROVISIONS FOR SURFACE PREPARATION.

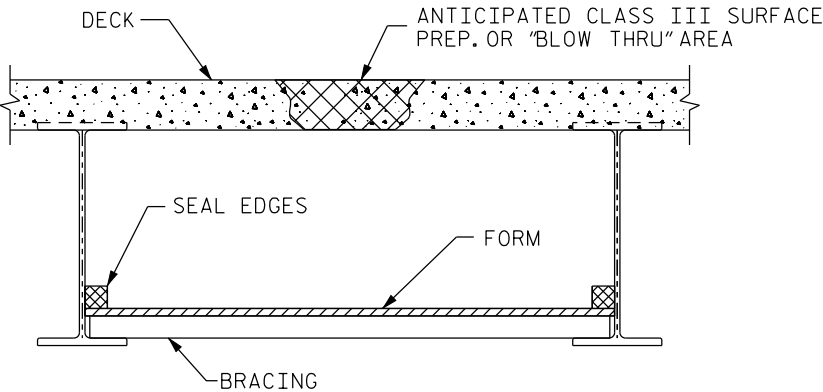
FOR HYDRO-DEMOLITION, SEE SPECIAL PROVISIONS .

FOR UNDER DECK CONTAINMENT SEE SPECIAL PROVISIONS.

THE CONTRACTOR MUST COLLECT, TREAT AND DISPOSE OF RUN -OFF WATER FROM THE HYDRO- DEMOLITION PROCESS, SEE SPECIAL PROVISIONS.

THE BOUNDARIES OF AREAS IDENTIFIED FOR CLASS III SURFACE PREPARATION ARE APPROXIMATE.

FOR EVAZOTE JOINT SEALS, SEE SPECIAL PROVISIONS.

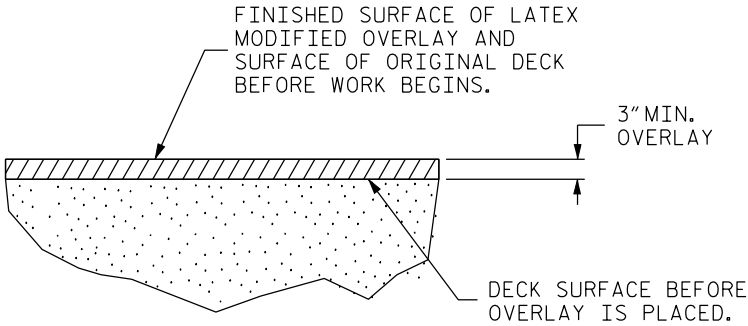


TYP. "BLOW THRU" CONTAINMENT AND FORMWORK

A METHOD TO CAPTURE WATER AND DEBRIS FROM BLOW THRU DURING HYDRO-DEMOLITION SHALL BE INSTALLED IN AREAS INDICATED AS CLASS III SURFACE PREPARATION.

SUBMIT DETAILS OF PROPOSED FORM WORK FOR APPROVAL PRIOR TO BEGINNING WORK.

COST FOR INSTALLING AND REMOVING FORM WORK SHALL BE INCIDENTAL TO THE PRICE PER SQ. YARD OF HYDRO-DEMOLITION.



DETAIL FOR LATEX MODIFIED CONCRETE OVERLAY

TOTAL BILL OF MATERIAL

* SCARIFYING BRIDGE DECK	* CLASS I SURFACE PREPARATION	* CLASS II SURFACE PREPARATION	* CLASS III SURFACE PREPARATION	HYDRO-DEMOLITION	LATEX MODIFIED CONCRETE VERY EARLY STRENGTH	PLACING & FINISHING LATEX MODIFIED CONCRETE VERY EARLY STRENGTH	EVAZOTE JOINT SEALS	GROOVING BRIDGE FLOOR	ASPHALT CONCRETE SURFACE COURSE TYPE SF 9.5A
SQ.YDS.	SQ.YDS.	SQ.YDS.	SQ.YDS.	SQ.YDS.	C.Y.	SQ.YDS.	LUMP SUM	SQ. FT.	TONS
861	537 ***	62 ***	0	599	58	599	LUMP SUM	5390	29

* QUANTITY SHOWN IS FOR INFORMATION ONLY. ** INCLUDES APPROACH MILLING. *** QUANTIY IS BEST GUESS DUE TO ASPHALT OVERLAY.

PROJECT NO. BK-5101 Q

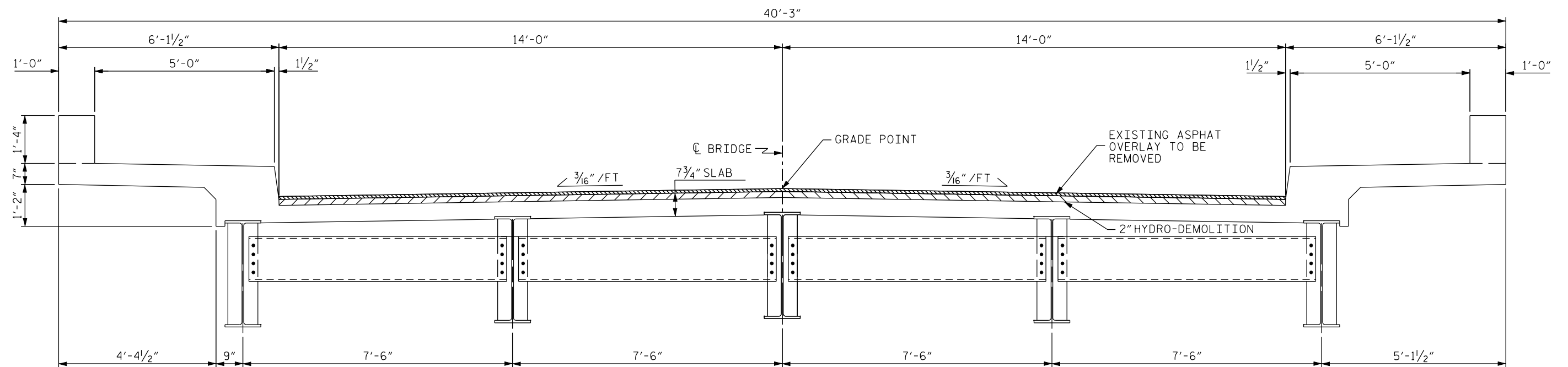
COUNTY: RANDOLPH

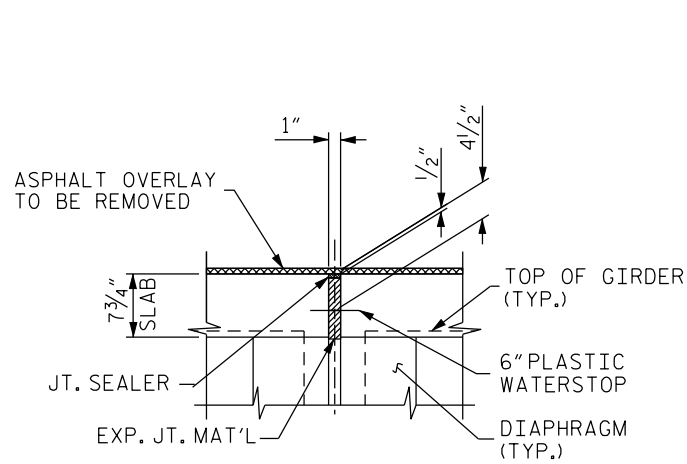
DECK REPAIR BRIDGE NO. 427

STATE OF NORTH CAROLINA DEPARTMENT OF TRANSPORTATION RALEIGH					
PLAN VIEW OF BRIDGE #427 ON SR 1462 OVER CAROLINA & N.W.R.R. 28' CL. ROADWAY 44°-52' SKEW					
REVISIONS					
NO.	BY	DATE	NO.	BY	DATE
1			3		
2			4		
SHEET NO. S-4					TOTAL SHEETS 7

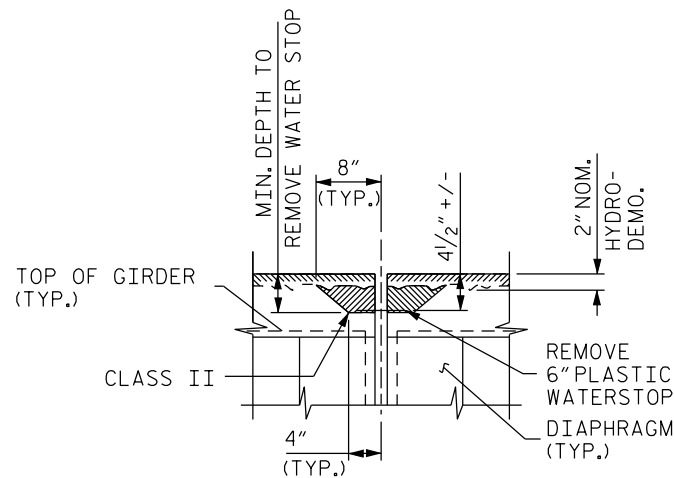
DRAWN BY: CLB DATE: 05/10

CHECKED BY: EBN DATE: 05/10



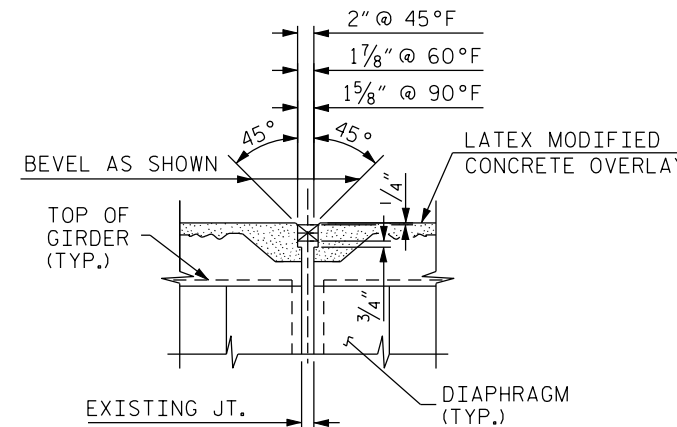


SECTION A-A
(EXISTING JOINT)

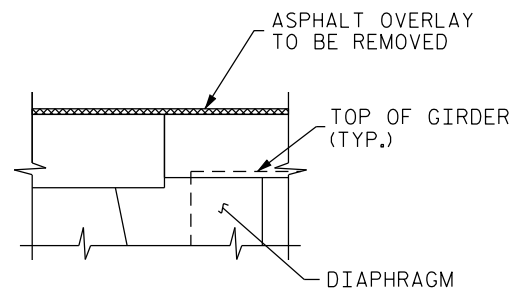
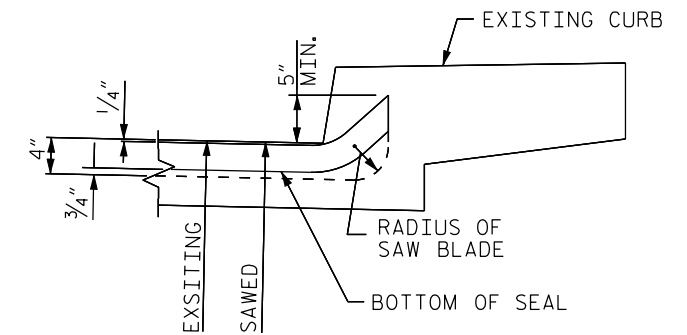


SECTION A-A
(MINIMUM EXISTING JOINT DEMOLITION)

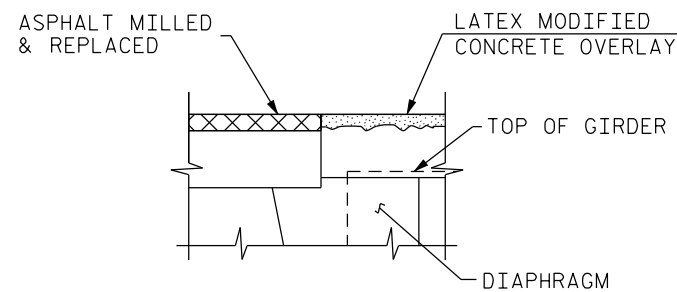
NOTE: RETAIN ALL EXISTING REINF. STEEL. CLEAN AND REPAIR AS REQ'D.



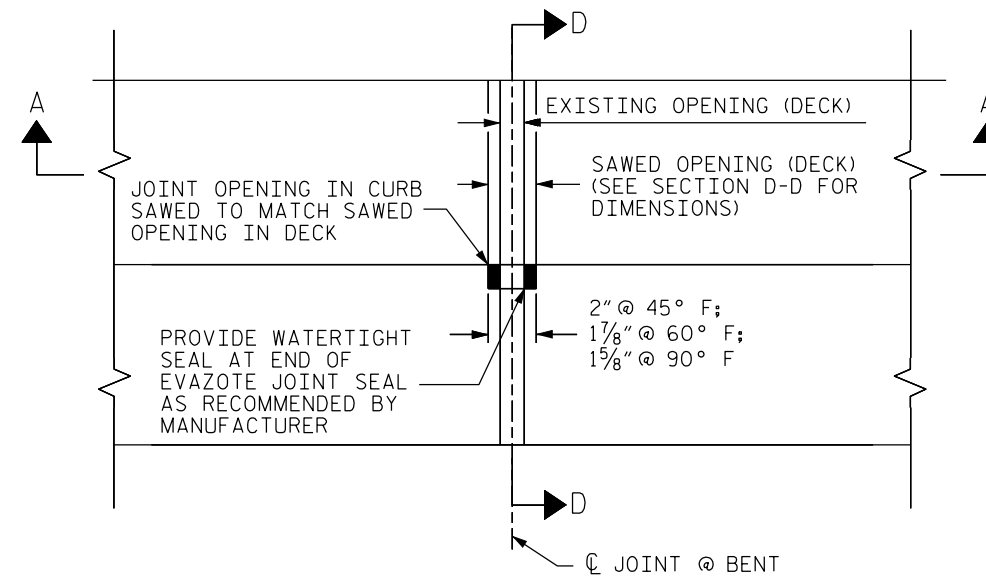
SECTION A-A



SECTION B-B
(EXISTING JOINT)



SECTION B-B
(PROPOSED JOINT)



PLAN

SECTION D-D

PROJECT NO. BK-5101 Q
COUNTY: RANDOLPH
DECK REPAIR BRIDGE NO. 427

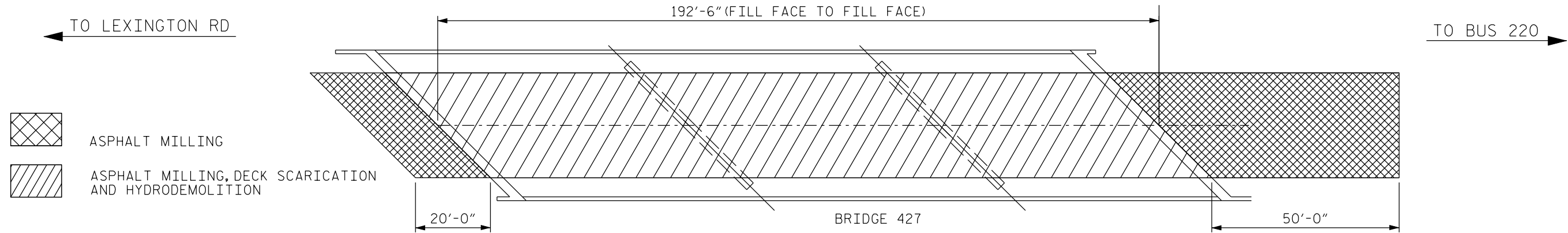
STATE OF NORTH CAROLINA
DEPARTMENT OF TRANSPORTATION
RALEIGH

JOINT DETAILS

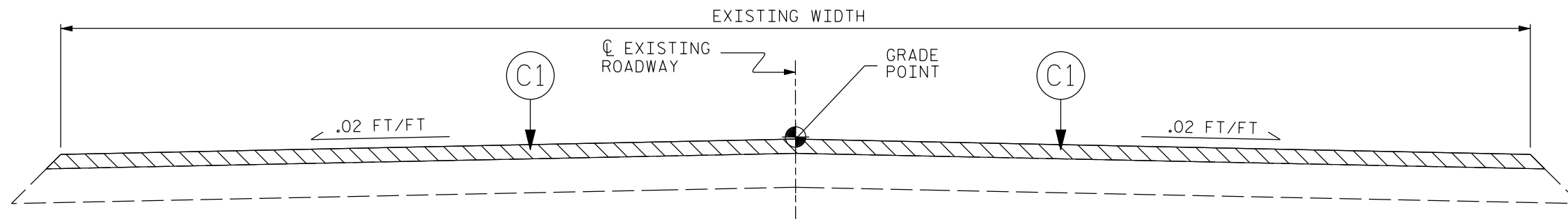
REVISIONS						SHEET NO.
NO.	BY	DATE	NO.	BY	DATE	
1			3			S-6
2			4			

TOTAL SHEETS
7

DRAWN BY: CLB DATE: 05/10
CHECKED BY: EBN DATE: 05/10

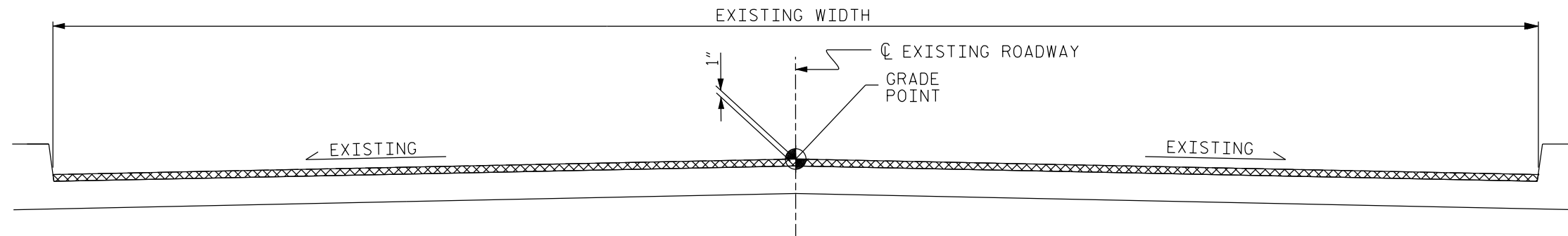


PLAN

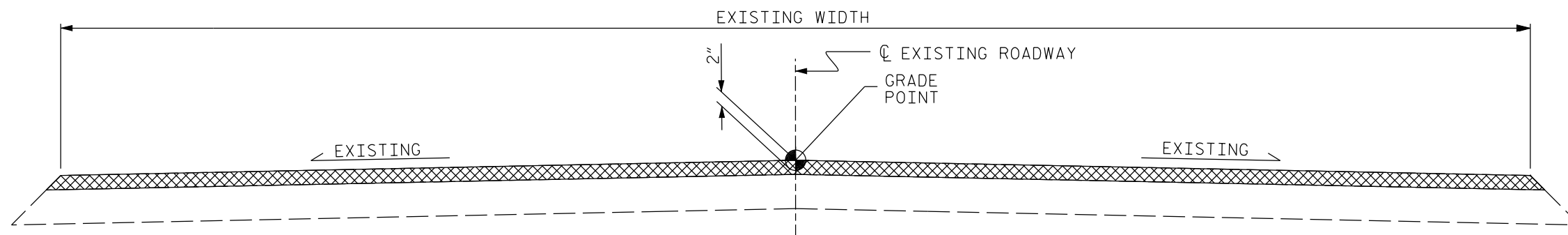


TYPICAL ROADWAY SECTION

C1	PROPOSED VARIABLE DEPTH ASPHALT CONCRETE SURFACE COURSE, TYPE SF 9.5A AT AN AVERAGE RATE OF 110 LBS. PER SQ. YD. PER 1" DEPTH, TO BE PLACED IN LAYERS NOT LESS THAN 1" IN DEPTH OR GREATER THAN 1 1/2" IN DEPTH.
----	--



TYPICAL BRIDGE MILLING SECTION
(MILL TO CONCRETE DECK)



TYPICAL ROADWAY MILLING SECTION
(MILL TO 2" DEPTH)

NOT TO SCALE

DRAWN BY: CLB DATE: 05/10
CHECKED BY: EBN DATE: 05/10

PROJECT NO. BK-5101 Q
COUNTY: RANDOLPH
DECK REPAIR BRIDGE NO. 427

STATE OF NORTH CAROLINA
DEPARTMENT OF TRANSPORTATION
RALEIGH
ROADWAY TYPICAL
SECTION AND
MILLING DETAILS

REVISIONS						SHEET NO.
NO.	BY	DATE	NO.	BY	DATE	S-7
1			3			TOTAL SHEETS
2			4			7

WBS 42579.3.15

BK-5101Q

STATE OF NORTH CAROLINA
DIVISION OF HIGHWAYS

PLAN FOR PROPOSED
TRAFFIC CONTROL

RANDOLPH COUNTY

LOCATION: BRIDGE NO. 205 ON W. PRESNELL ST. OVER I-73/74/US 220
AND BRIDGE NO. 427 ON W. PRESNELL ST. OVER RAILROAD

TYPE OF WORK: TRAFFIC CONTROL FOR BRIDGE DECK PRESERVATION

ROADWAY STANDARD DRAWINGS

THE FOLLOWING ROADWAY STANDARDS AS APPEAR IN "ROADWAY STANDARD DRAWINGS" -
PROJECT SERVICES UNIT - N.C. DEPARTMENT OF TRANSPORTATION - RALEIGH, N.C.,
DATED JULY 2006 ARE APPLICABLE TO THIS PROJECT AND BY REFERENCE HEREBY ARE
CONSIDERED A PART OF THESE PLANS:

STD. NO.	TITLE
1101.02	TEMPORARY LANE CLOSURES
1101.04	TEMPORARY SHOULDER CLOSURES
1101.11	TRAFFIC CONTROL DESIGN TABLES
1110.01	STATIONARY WORK ZONE SIGNS
1110.02	PORTABLE WORK ZONE SIGNS
1115.01	FLASHING ARROW PANELS
1130.01	DRUMS
1135.01	CONES
1145.01	BARRICADES
1150.01	FLAGGING DEVICES
1205.01	PAVEMENT MARKINGS - LINE TYPES & OFFSETS
1205.02	PAVEMENT MARKINGS - 2 LANE & MULTILANE ROADWAYS
1205.07	PAVEMENT MARKINGS - PEDESTRIAN CROSSWALKS
1205.08	PAVEMENT MARKINGS - SYMBOLS & WORD MESSAGES
1205.09	PAVEMENT MARKINGS - PAINTED ISLANDS
1250.01	PAVEMENT MARKER SPACING
1253.01	SNOWPLOWABLE RAISED PAVEMENT MARKERS




INDEX OF SHEETS

SHEET NO.	TITLE
TCP-1	LIST OF APPLICABLE ROADWAY STANDARD DRAWINGS, LEGEND, AND INDEX OF SHEETS
TCP-2	GENERAL NOTES AND TRAFFIC CONTROL PHASING
TCP-3	W. PRESNELL ST. / N. PARK DR. DETOUR ROUTE
TCP-4	ROAD & RAMP CLOSURE DETAIL





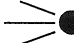
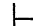

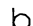


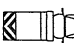


STATE PROJECT REFERENCE NO.	SHEET NO.
BK-5101Q	TCP-1

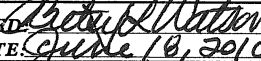
LEGEND

GENERAL

-  DIRECTION OF TRAFFIC FLOW
-  NORTH ARROW
-  WORK AREA

TRAFFIC CONTROL DEVICES

-  TYPE III BARRICADE
-  CONE
-  DRUM  SKINNY DRUM
-  FLASHING ARROW PANEL (TYPE C)
-  STATIONARY SIGN
-  PORTABLE SIGN
-  STATIONARY OR PORTABLE SIGN
-  TEMPORARY CRASH CUSHION
-  CHANGEABLE MESSAGE SIGN
-  TRUCK MOUNTED IMPACT ATTENUATOR (TMIA)
-  POLICE
-  FLAGGER

APPROVED: 
DATE: June 16, 2010



PLAN PREPARED BY:



Stantec Consulting Services Inc.
Suite 300, 801 Jones Franklin Road
Raleigh, NC
27606
Tel. 919.851.8898
Fax. 919.851.7024
www.stantec.com
License No. F-0672

BETSY L. WATSON, PE

TRAFFIC CONTROL ENGINEER

GEORGE KARAGEORGE

TRAFFIC CONTROL DESIGNER

GENERAL NOTES

CHANGES MAY BE REQUIRED WHEN PHYSICAL DIMENSIONS IN THE DETAIL DRAWINGS, STANDARD DETAILS, AND ROADWAY DETAILS ARE NOT ATTAINABLE TO MEET FIELD CONDITIONS OR RESULT IN DUPLICATE OR UNDESIRE

THE FOLLOWING GENERAL NOTES APPLY AT ALL TIMES FOR THE DURATION OF THE CONSTRUCTION PROJECT EXCEPT WHEN OTHERWISE NOTED IN THE PLAN OR DIRECTED BY THE ENGINEER.

TIME RESTRICTIONS

A) DO NOT CLOSE OR NARROW TRAVEL LANES AS FOLLOWS:

ROAD NAME	DAY AND TIME RESTRICTIONS
I-73/74, US 220	6:00 A.M.-9:00 A.M. MONDAY THRU FRIDAY 4:00 P.M.-6:00 P.M. MONDAY THRU FRIDAY

B) DO NOT CLOSE OR NARROW TRAVEL LANES DURING HOLIDAYS AND SPECIAL EVENTS AS FOLLOWS:

ROAD NAME
I-73/74, US 220

HOLIDAY

- FOR ANY UNEXPECTED OCCURRENCE THAT CREATES UNUSUALLY HIGH TRAFFIC VOLUMES, AS DIRECTED BY THE ENGINEER.
- FOR NEW YEAR'S, BETWEEN THE HOURS OF 6:00 P.M. DECEMBER 31st TO 6:00 A.M. JANUARY 2ND. IF NEW YEAR'S DAY IS ON A FRIDAY, SATURDAY, SUNDAY, OR MONDAY THEN UNTIL 6:00 A.M. THE FOLLOWING TUESDAY.
- FOR EASTER, BETWEEN THE HOURS OF 6:00 P.M. THURSDAY AND 6:00 A.M. MONDAY.
- FOR MEMORIAL DAY, BETWEEN THE HOURS OF 6:00 P.M. FRIDAY TO 6:00 A.M. TUESDAY.
- FOR INDEPENDENCE DAY, BETWEEN THE HOURS OF 6:00 P.M. THE DAY BEFORE INDEPENDENCE DAY AND 6:00 A.M. THE DAY AFTER INDEPENDENCE DAY.

IF INDEPENDENCE DAY IS ON A FRIDAY, SATURDAY, SUNDAY OR MONDAY THEN BETWEEN THE HOURS OF 6:00 P.M. THE THURSDAY BEFORE INDEPENDENCE DAY AND 6:00 A.M. THE TUESDAY AFTER INDEPENDENCE DAY.
- FOR LABOR DAY, BETWEEN THE HOURS OF 6:00 P.M. FRIDAY AND 6:00 A.M. TUESDAY.
- FOR THANKSGIVING DAY, BETWEEN THE HOURS OF 6:00 P.M. TUESDAY TO 6:00 A.M. MONDAY.
- FOR CHRISTMAS, BETWEEN THE HOURS OF 6:00 P.M. THE FRIDAY BEFORE THE WEEK OF CHRISTMAS DAY AND 6:00 A.M. THE FOLLOWING TUESDAY AFTER THE WEEK OF CHRISTMAS.

C) DO NOT CLOSE ROADS AS FOLLOWS:

ROAD NAME	DAY AND TIME RESTRICTIONS
ALL ROADS	6:00 A.M.-6:00 P.M. MONDAY THRU SUNDAY

TRAFFIC CONTROL DEVICES

D) WHEN CLOSING A ROADWAY OR DRIVEWAY PLACE TYPE III BARRICADES COMPLETELY ACROSS THE ROADWAY OR FROM CURB TO CURB. ATTACH BARRICADE MOUNTED "ROAD CLOSED" SIGN R11-2 AT ALL CLOSURE LOCATIONS. IF LOCAL TRAFFIC IS TO BE MAINTAINED STAGGER THE BARRICADES TO ALLOW ACCESS.

PAVEMENT MARKINGS AND MARKERS

E) INSTALL PAVEMENT MARKINGS AND PAVEMENT MARKERS ON THE FINAL SURFACE TO REPLACE EXISTING.

UPON COMPLETION OF ALL OTHER CONSTRUCTION OPERATIONS INSTALL PAVEMENT MARKINGS AND PAVEMENT MARKERS ON THE FINAL SURFACE AS FOLLOWS:

ROAD NAME	MARKING	MARKER
PRESNELL ST.	PAINT (2 APPS)	SNOWPLOWABLE RAISED

LANE AND SHOULDER CLOSURE REQUIREMENTS

- F) REMOVE LANE CLOSURE DEVICES FROM THE LANE WHEN WORK IS NOT BEING PERFORMED BEHIND THE LANE CLOSURE OR WHEN A LANE CLOSURE IS NO LONGER NEEDED OR AS DIRECTED BY THE ENGINEER.
- G) WHEN PERSONNEL AND/OR EQUIPMENT ARE WORKING WITHIN 15 FT OF AN OPEN TRAVEL LANE, CLOSE THE NEAREST OPEN SHOULDER USING ROADWAY STANDARD DRAWING NO. 1101.04 UNLESS THE WORK AREA IS PROTECTED BY BARRIER OR GUARDRAIL OR A LANE CLOSURE IS INSTALLED.
- H) WHEN PERSONNEL AND/OR EQUIPMENT ARE WORKING ON THE SHOULDER ADJACENT TO A DIVIDED FACILITY AND WITHIN 10 FT OF AN OPEN TRAVEL LANE, CLOSE THE NEAREST OPEN TRAVEL LANE USING ROADWAY STANDARD DRAWING NO. 1101.02 UNLESS THE WORK AREA IS PROTECTED BY BARRIER OR GUARDRAIL.
- I) WHEN PERSONNEL AND/OR EQUIPMENT ARE WORKING WITHIN A LANE OF TRAVEL OF AN UNDIVIDED OR DIVIDED FACILITY, CLOSE THE LANE ACCORDING TO THE TRAFFIC CONTROL PLANS, ROADWAY STANDARD DRAWINGS, OR AS DIRECTED BY THE ENGINEER. CONDUCT THE WORK SO THAT ALL PERSONNEL AND/OR EQUIPMENT REMAIN WITHIN THE CLOSED TRAVEL LANE.
- J) DO NOT WORK SIMULTANEOUSLY WITHIN 15 FT ON BOTH SIDES OF AN OPEN TRAVELWAY, RAMP, OR LOOP WITHIN THE SAME LOCATION UNLESS PROTECTED WITH GUARDRAIL OR BARRIER.

PAVEMENT EDGE DROP OFF REQUIREMENTS

K) DO NOT EXCEED A DIFFERENCE OF 2 INCHES IN ELEVATION BETWEEN OPEN LANES OF TRAFFIC FOR NOMINAL LIFTS OF 1.5 INCHES. INSTALL ADVANCE WARNING "UNEVEN LANES" SIGNS (W8-11) IN ADVANCE AND A MINIMUM OF 500 FT. EVERY HALF MILE THROUGHOUT THE UNEVEN AREA.

TRAFFIC PATTERN ALTERATIONS

L) NOTIFY THE ENGINEER TWENTY ONE (21) CALENDAR DAYS PRIOR TO ANY TRAFFIC PATTERN ALTERATION.

SIGNING

- M) PROVIDE SIGNING AND DEVICES REQUIRED TO CLOSE THE ROAD ACCORDING TO THE ROADWAY STANDARD DRAWINGS AND TRAFFIC CONTROL PLANS. COVER OR REMOVE ALL SIGNS AND DEVICES REQUIRED TO CLOSE THE ROAD WHEN ROAD CLOSURE IS NOT IN OPERATION.
- N) PROVIDE SIGNING REQUIRED FOR THE OFFSITE DETOUR ROUTE AS SHOWN IN THE TRAFFIC CONTROL PLANS. SIGNS DO NOT HAVE TO BE COVERED WHEN THE DETOUR IS NOT IN OPERATION.
- O) ENSURE ALL NECESSARY SIGNING IS IN PLACE PRIOR TO ALTERING ANY TRAFFIC PATTERN.

MISCELLANEOUS

- P) DURING BRIDGE CONSTRUCTION ON BRIDGE 427 OVER RAILROAD, COORDINATE WORK WITH RAILROAD AUTHORITY AS DIRECTED BY ENGINEER.
- Q) ENSURE THE OVERSIZE/OVERWEIGHT PERMIT UNIT (919) 733-4740 HAS BEEN ADVISED OF THE ONGOING TRAFFIC OPERATIONS THROUGH THE DIVISION OFFICE.

TRAFFIC CONTROL PHASING

PHASE I

STEP 1:
INSTALL CHANGEABLE MESSAGE SIGNS AS SHOWN ON TCP-4, OR AS DIRECTED BY THE ENGINEER. INSTALL CHANGEABLE MESSAGE SIGNS AT LEAST 1 WEEK PRIOR TO ROAD CLOSURE AND DISPLAY PUBLIC INFORMATION MESSAGES AS DIRECTED BY THE ENGINEER.

IN PREPARATION FOR THE ROAD CLOSURES IN STEP 2, INSTALL OFFSITE DETOUR ROUTE SIGNS (TCP-3). OFFSITE DETOUR SIGNS DO NOT HAVE TO BE COVERED NIGHTLY.

STEP 2:
PERFORM BRIDGE WORK USING A SERIES OF NIGHTLY ROAD CLOSURES AS DESCRIBED IN STEPS 2A THRU 2E.

COMPLETE STEPS 2A THRU 2E IN A CONTINUOUS OPERATION FOR EACH NIGHTLY ROAD CLOSURE.

2A:
IMPLEMENT OFFSITE DETOUR FOR N. PARK DR. AND W. PRESNELL ST. EXIT RAMP CLOSURE (TCP-3) AND CLOSE EXIT RAMP TO PRESNELL ST. (TCP-4).

2B:
IMPLEMENT OFFSITE DETOURS FOR N. PARK DR./W. PRESNELL ST. ROAD CLOSURES. SIMULTANEOUSLY IMPLEMENT ROAD CLOSURES OF W. PRESNELL ST. EAST OF BRIDGE 427 AND N. PARK DR. WEST OF BRIDGE 205 (TCP-4).

2C:
PERFORM NIGHTLY BRIDGE CONSTRUCTION OPERATIONS FOR BRIDGE NO. 205 AND BRIDGE NO. 427.

REPLACE EXISTING PAVEMENT MARKINGS THAT WERE OBLITERATED.

PERFORM ONLY THE AMOUNT OF HYDRO-DEMOLITION THAT CAN BE OVERLAYED BEFORE OPENING LANES TO TRAFFIC.


2D:
UPON COMPLETION OF EACH NIGHTS BRIDGE CONSTRUCTION AND PAVEMENT MARKING WORK, REMOVE THE ROAD CLOSURES AT W. PRESNELL ST. EAST OF BRIDGE 427 AND N. PARK DR. WEST OF BRIDGE 205 SIMULTANEOUSLY. REVISE CHANGEABLE MESSAGE SIGN MESSAGES.

2E:
REMOVE THE PRESNELL ST. EXIT RAMP CLOSURE AND REVISE CHANGEABLE MESSAGE SIGN MESSAGES.

STEP 3:
UPON COMPLETION OF ALL BRIDGE WORK USE FLAGGER OPERATION LANE CLOSURES TO INSTALL FINAL PAVEMENT MARKINGS AND MARKERS.

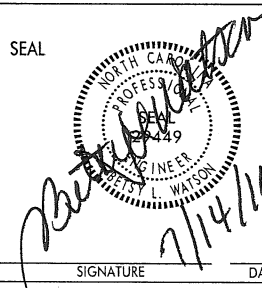
STEP 4:
REMOVE ALL DETOUR SIGNING AND REMAINDER OF TRAFFIC CONTROL DEVICES FROM PROJECT.

7/12/2010 10:10:10 AM J:\Projects\2010\Randolph\TCP\Plan Sheets\BK-51010-tcp-ps-02.dgn gkarageorge




Stantec
Stantec Consulting Services Inc.
801 Jones Franklin Road
Suite 300
Raleigh, NC 27606
Tel. (919) 851-6886
Fax. (919) 851-7024
www.stantec.com
License No. F-0672

SEAL

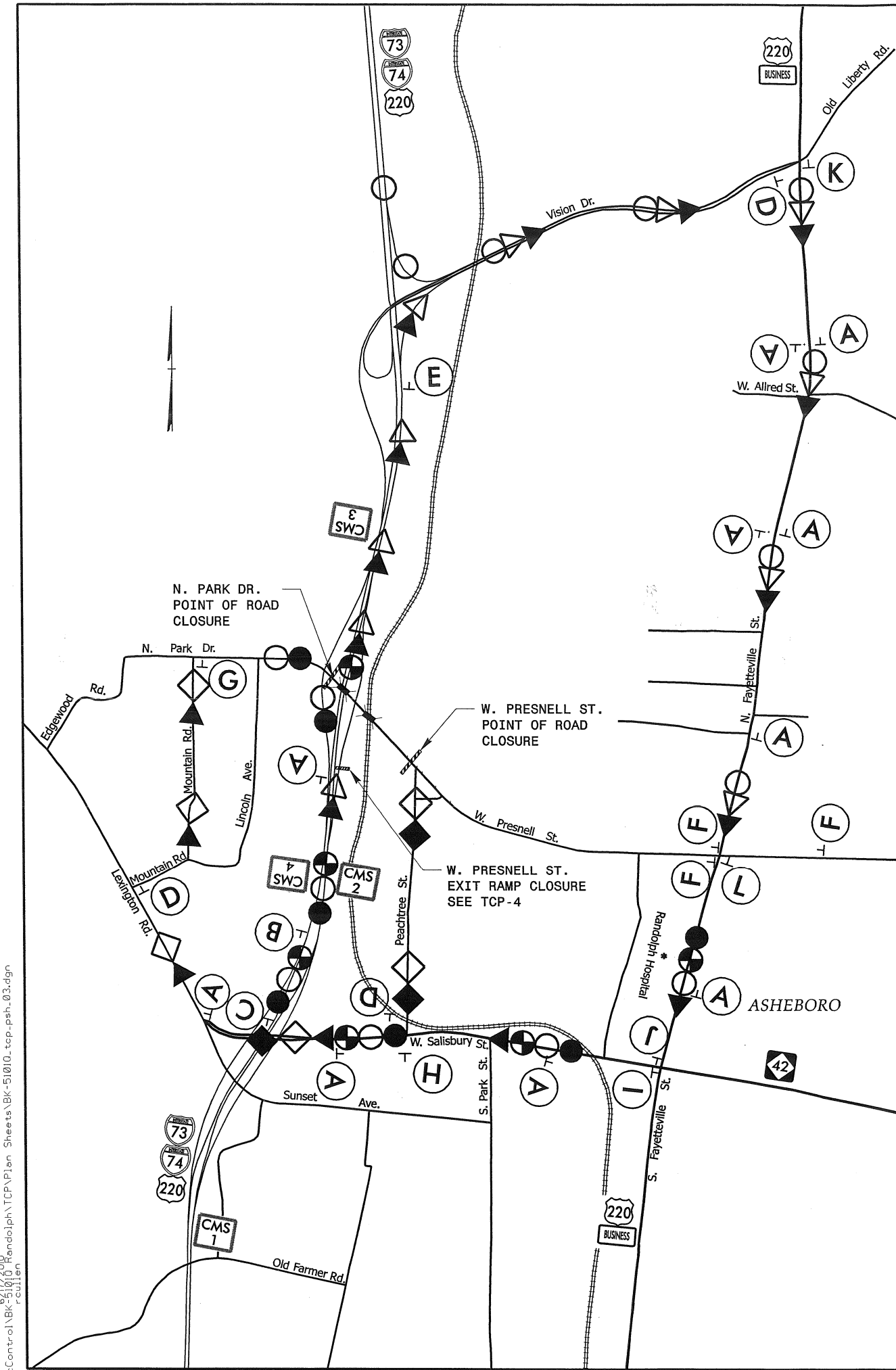


SIGNATURE DATE

PROJECT NOTES
GENERAL NOTES
TRAFFIC CONTROL PHASING

SCALE: NONE		REVISIONS
DATE: JUNE 2010		
DWG. BY: GK		
DESIGN BY: GK		
REVIEWED BY: BLW		

CADD FILE



OFFSITE DETOUR ROUTE SIGNS

PROJECT REFERENCE NO. BK-5101Q
SHEET NO. TCP-3

A DETOUR
M4-8 24" X 12"
M6-3 21" X 15"

B DETOUR
M4-8 24" X 12"
M6-2 L 21" X 15"

C DETOUR
M4-8 24" X 12"
M6-1 L 21" X 15"

D DETOUR
M4-8 24" X 12"
M6-1 21" X 15"

E DETOUR
M4-8 24" X 12"
M6-2 21" X 15"

F ROAD CLOSED AHEAD
W20-3 48" X 48"

G END DETOUR
M4-8 A 24" X 18"

H DETOUR
M4-8 24" X 12"
M1-1 21" X 15"

I DETOUR
ADD PANEL
TO NORTH
73
TO WEST
74
220
M1-1 21" X 15"

J DETOUR
ADD PANEL
TO SOUTH
73
TO EAST
74
220
M1-1 21" X 15"

K DETOUR
ADD PANEL
TO 220
73
TO 74
220
M1-1 21" X 15"

L DETOUR
ADD PANEL
TO 73
74
TO 220
M1-1 21" X 15"

OFFSITE DETOUR ROUTE CHANGEABLE MESSAGE SIGNS

CMS 1

MESSAGE NO. 1	MESSAGE NO. 2
PRESNELL EXIT CLOSED	USE ALT ROUTE

CHANGEABLE MESSAGE SIGN

CMS 2

MESSAGE NO. 1	MESSAGE NO. 2
PRESNELL EXIT CLOSED	USE NEXT EXIT

CHANGEABLE MESSAGE SIGN

CMS 3

MESSAGE NO. 1	MESSAGE NO. 2
PRESNELL STREET ASHEBORO	USE NC 42 EXIT

CHANGEABLE MESSAGE SIGN

CMS 4

MESSAGE NO. 1	MESSAGE NO. 2
PRESNELL DETOUR TO NC 42	NC 42 LEFT EXIT

CHANGEABLE MESSAGE SIGN

OFFSITE DETOUR ROUTES

N. PARK DR. TO NB I-73/74, US 220 DETOUR ROUTE
RAMP TO SB I-73/74, US 220
LEFT EXIT FOR NC 42
LEFT ON NC 42
LEFT ON N. FAYETTEVILLE ST.
LEFT ON VISION DR.
END DETOUR

W. PRESNELL ST. TO N. PARK DR. DETOUR ROUTE
LEFT ON PEACHTREE ST.
RIGHT ON W. SALISBURY ST.
RIGHT ON LEXINGTON RD.
RIGHT ON MOUNTAIN RD.
END DETOUR

N. PARK DR. TO W. PRESNELL ST. DETOUR ROUTE
RAMP TO SB I-73/74, US 220
LEFT EXIT FOR NC 42
LEFT ON NC 42
LEFT ON N. FAYETTEVILLE ST.
W. PRESNELL ST.
END DETOUR

W. PRESNELL ST. TO I-73/74 NB/SB, US 220 DETOUR ROUTE
LEFT ON PEACHTREE ST.
RIGHT ON W. SALISBURY ST.
END DETOUR

PRESNELL ST. EXIT RAMP CLOSURE N. PARK DR. DETOUR ROUTE
EXIT TO VISION DR.
RIGHT ON N. FAYETTEVILLE ST.
RIGHT ON W. SALISBURY ST.
RIGHT ON LEXINGTON RD.
RIGHT ON MOUNTAIN RD.
END DETOUR

PRESNELL ST. EXIT RAMP CLOSURE PRESNELL ST. DETOUR ROUTE
EXIT TO VISION DR.
RIGHT ON N. FAYETTEVILLE ST.
END DETOUR

SB I-73/74, US 220 TO W. PRESNELL ST. DETOUR ROUTE
CONT. ON SB I-73/74, US 220
LEFT EXIT FOR NC 42
LEFT ON NC 42
LEFT ON N. FAYETTEVILLE ST.
W. PRESNELL ST.
END DETOUR

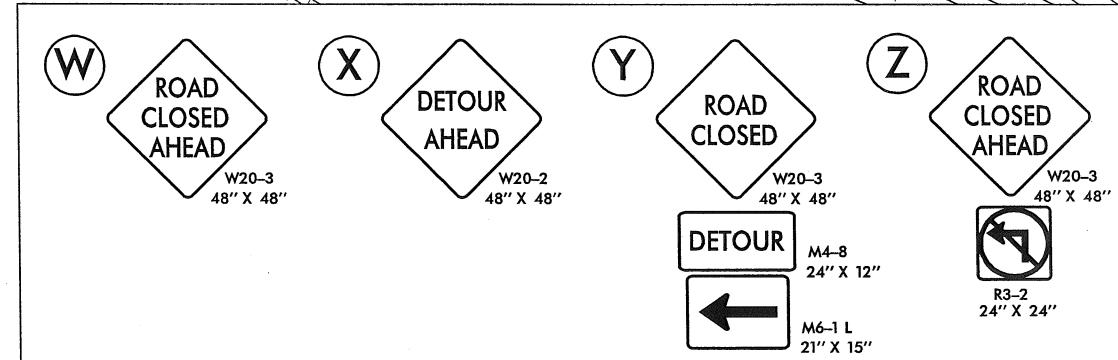
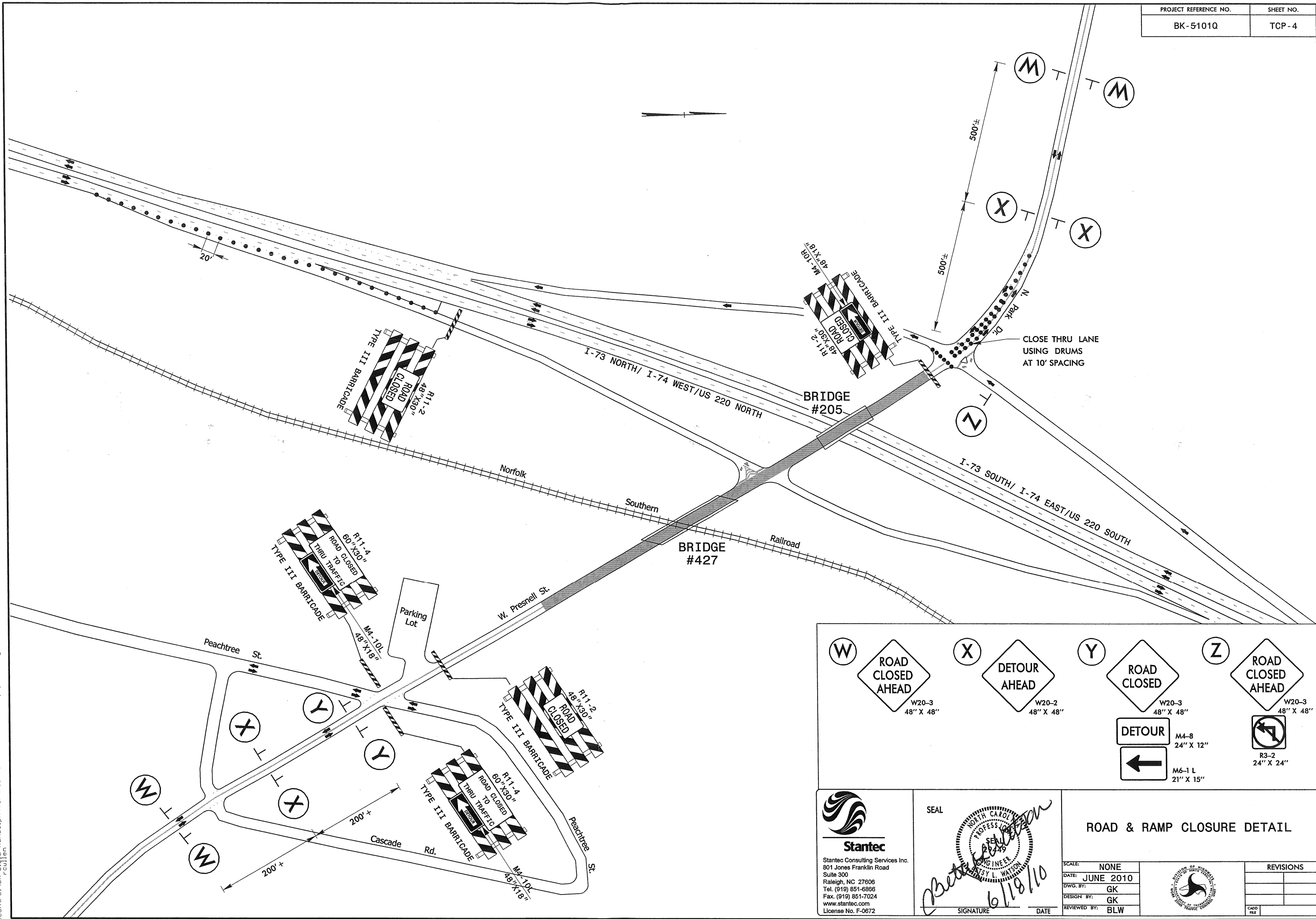
ic:\Control\BK-5101Q\TCP\Plan Sheets\BK-5101Q_tcp_psh_03.dgn

Stantec
Stantec Consulting Services Inc.
801 Jones Franklin Road
Suite 300
Raleigh, NC 27606
Tel. (919) 851-8866
Fax. (919) 851-7024
www.stantec.com
License No. F-0672

SEAL

SIGNATURE DATE

W. PRESNELL ST./N. PARK DR. DETOUR ROUTE
SCALE: NONE
DATE: JUNE 2010
DWG. BY: GK
DESIGN BY: GK
REVIEWED BY: BLW
REVISIONS
CADD FILE



Stantec
Stantec Consulting Services Inc.
801 Jones Franklin Road
Suite 300
Raleigh, NC 27606
Tel. (919) 851-6866
Fax. (919) 851-7024
www.stantec.com
License No. F-0672

SEAL

Timothy L. Watson
6/18/10

SIGNATURE DATE

ROAD & RAMP CLOSURE DETAIL

SCALE:	NONE
DATE:	JUNE 2010
DWG. BY:	GK
DESIGN BY:	GK
REVIEWED BY:	BLW

REVISIONS

NO.	DESCRIPTION

CADD FILE

I:\Control\BK-5101Q\TCP\Plan Sheets\BK-5101Q_tcp_psh_04.dgn