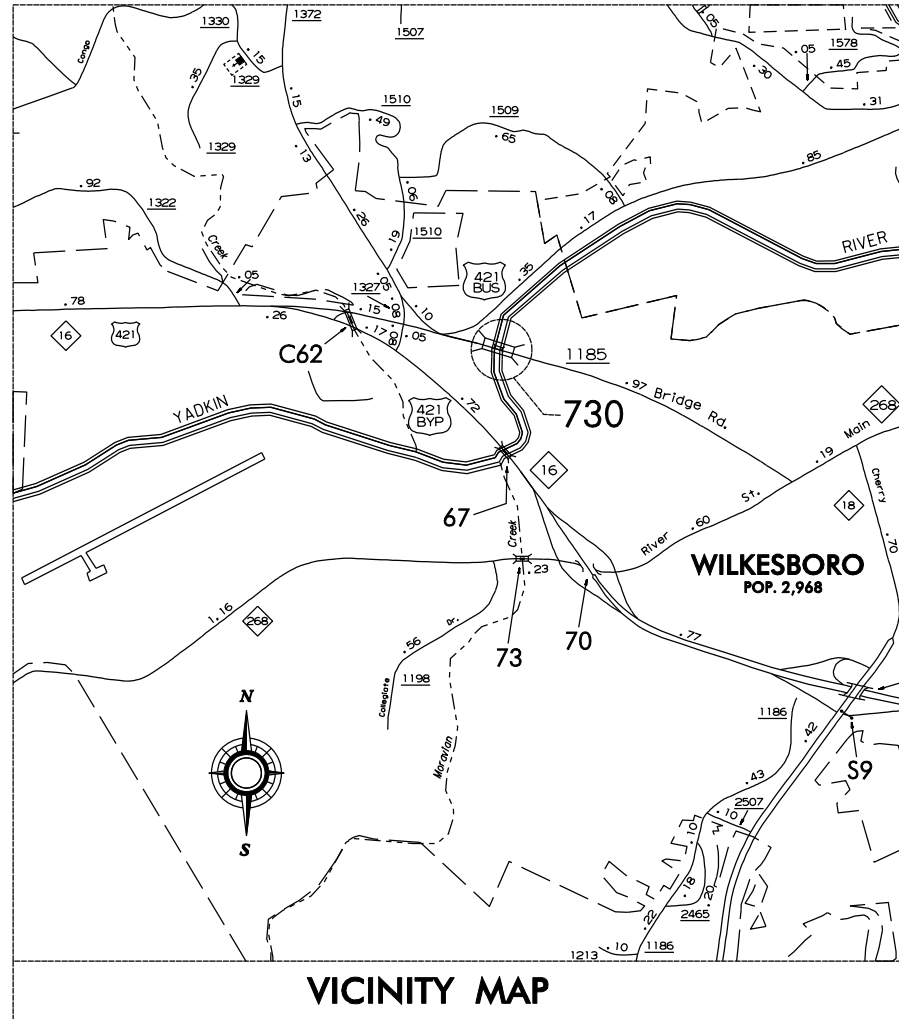


BK-5101H

CONTRACT #: D000058



VICINITY MAP

TO NC 268
WILKESBORO

INDEX OF SHEETS	
1 - 6	STRUCTURE PLANS
TCP1 - TCP3	TRAFFIC CONTROL PLANS

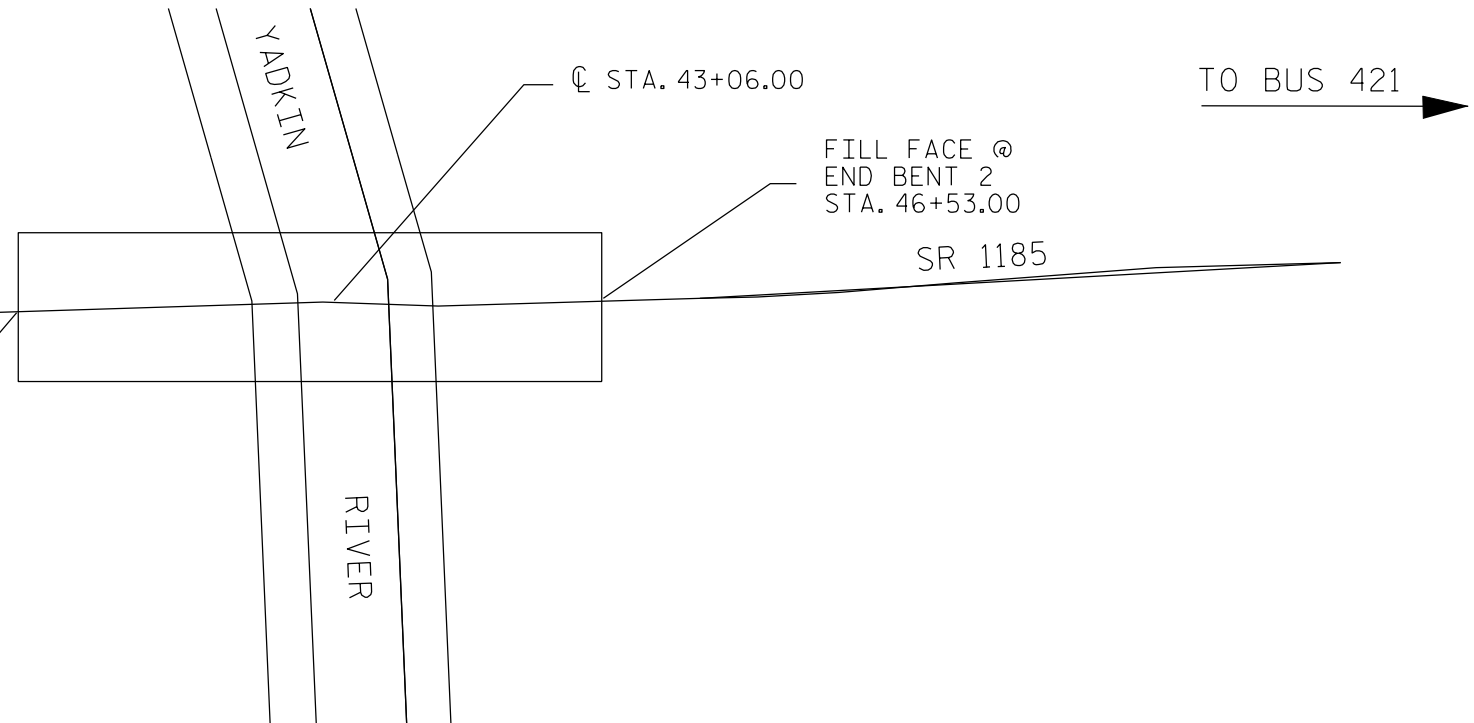
STATE OF NORTH CAROLINA
DIVISION OF HIGHWAYS

WILKES COUNTY

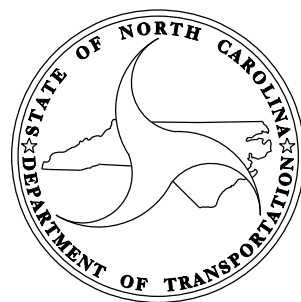
**LOCATION: BRIDGE #730, SR 1185, BRIDGE RD. OVER
THE YADKIN RIVER**

**TYPE OF WORK: BRIDGE DECK REHABILITATION WITH
LATEX MODIFIED CONCRETE,
PAVEMENT MARKING**

STATE	STATE PROJECT REFERENCE NO.	SHEET NO.	TOTAL SHEETS
N.C.	42579.3.8	1	6
STATE PROJ. NO.	F.A. PROJ. NO.	DESCRIPTION	
42579.1.1	BRZ-1185 (3)	PE	
42579.3.8	BRZ-1185 (3)	CONST	



FILL FACE @
END BENT 1
STA. 39+59.00



DESIGN DATA
ADT 2005 = 6500
ADT 2025 = 13000

PROJECT LENGTH

LENGTH STRUCTURE PROJECT = .013 MILE

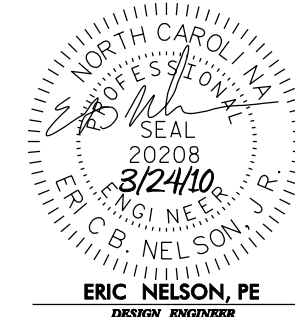
Prepared In the Office of:

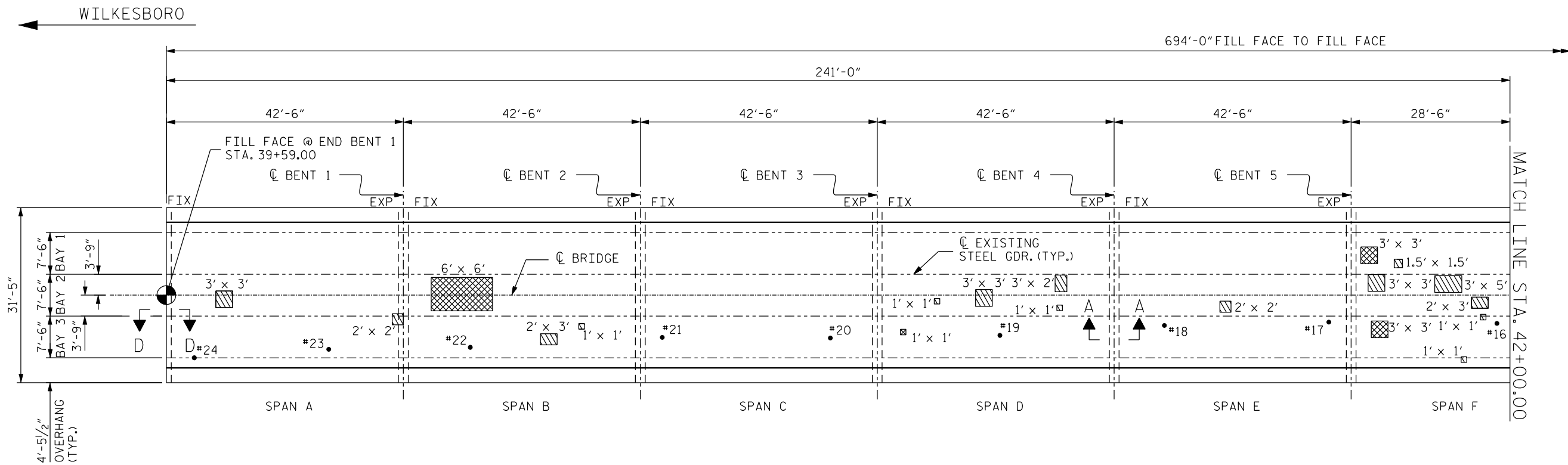
DIVISION OF BRIDGE MANAGEMENT

2006 STANDARD SPECIFICATIONS

LETTING DATE:
MAY 20, 2010

DAN HOLDERMAN, PE
PROJECT ENGINEER





PLAN

- APPROX. AREA: CLASS II REPAIR
- APPROX. AREA: CLASS III REPAIR
- APPROX. TEST BORING LOCATION

NOTES

FOR OVERLAY OF BRIDGE WITH LATEX MODIFIED CONCRETE, SEE SPECIAL PROVISIONS.

SEE SPECIAL PROVISIONS FOR SURFACE PREPARATION.

FOR HYDRO-DEMOLITION, SEE SPECIAL PROVISIONS .

FOR UNDER DECK CONTAINMENT SEE SPECIAL PROVISIONS.

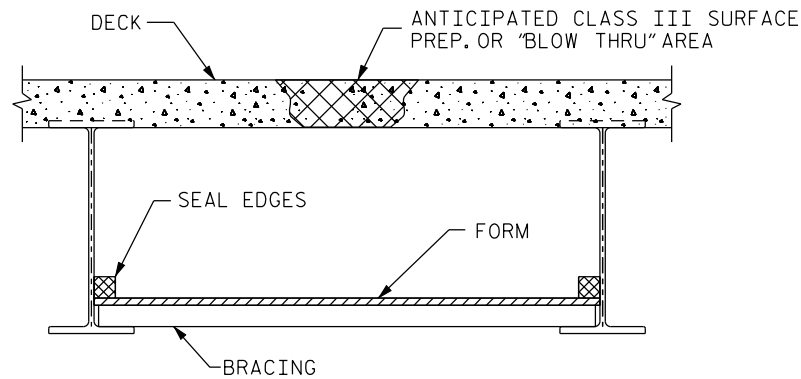
THE CONTRACTOR MUST COLLECT, TREAT AND DISPOSE OF RUN-OFF WATER FROM THE HYDRO- DEMOLITION PROCESS, SEE SPECIAL PROVISIONS.

THE BOUNDARIES OF AREAS IDENTIFIED FOR CLASS III SURFACE PREPARATION ARE APPROXIMATE.

FOR EVAZOTE JOINT SEALS, SEE SPECIAL PROVISIONS.

FOR ELASTOMERIC CONCRETE, SEE SPECIAL PROVISIONS.

BRIDGE DECK DRIANS SHALL BE PLUGGED DURING HYDRODEMOLITION PROCESS. SEE HYDRODEMOLITION SPECIAL PROVISIONS.

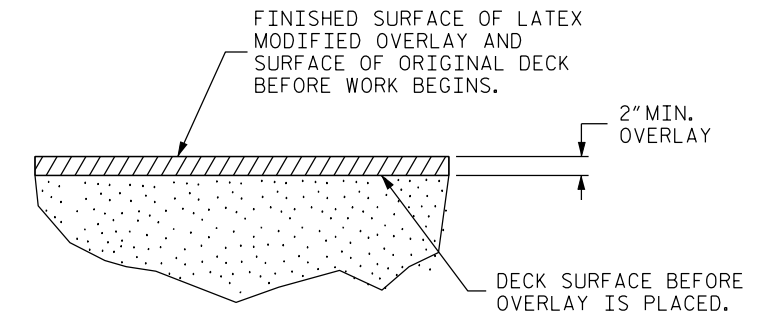


TYP. "BLOW THRU" CONTAINMENT AND FORMWORK

A METHOD TO CAPTURE WATER AND DEBRIS FROM BLOW THRU DURING HYDRO-DEMOLITION SHALL BE INSTALLED IN AREAS INDICATED AS CLASS III SURFACE PREPARATION.

SUBMIT DETAILS OF PROPOSED FORM WORK FOR APPROVAL PRIOR TO BEGINNING WORK.

COST FOR INSTALLING AND REMOVING FORM WORK SHALL BE INCIDENTAL TO THE PRICE PER SQ. YARD OF HYDRO-DEMOLITION.



DETAIL FOR LATEX MODIFIED CONCRETE OVERLAY

TOTAL BILL OF MATERIAL

** DECK SCARIFICATION	* CLASS I SURFACE PREPARATION	* CLASS II SURFACE PREPARATION	* CLASS III SURFACE PREPARATION	* CLASS AA CONCRETE	HYDRO-DEMOLITION	LATEX MODIFIED CONCRETE	PLACING & FINISHING LATEX MODIFIED CONCRETE	EVAZOTE JOINT SEALS	GROOVING BRIDGE FLOOR	ASPHALT CONCRETE SURFACE COURSE TYPE SF 9.5A
SQ.YDS.	SQ.YDS.	SQ.YDS.	SQ.YDS.	C.Y.	SQ.YDS.	C.Y.	SQ. YDS.	LUMP SUM	SQ. FT.	TONS
2294	1951	46	8	1	2005	140	2005	LUMP SUM	18044	30.5

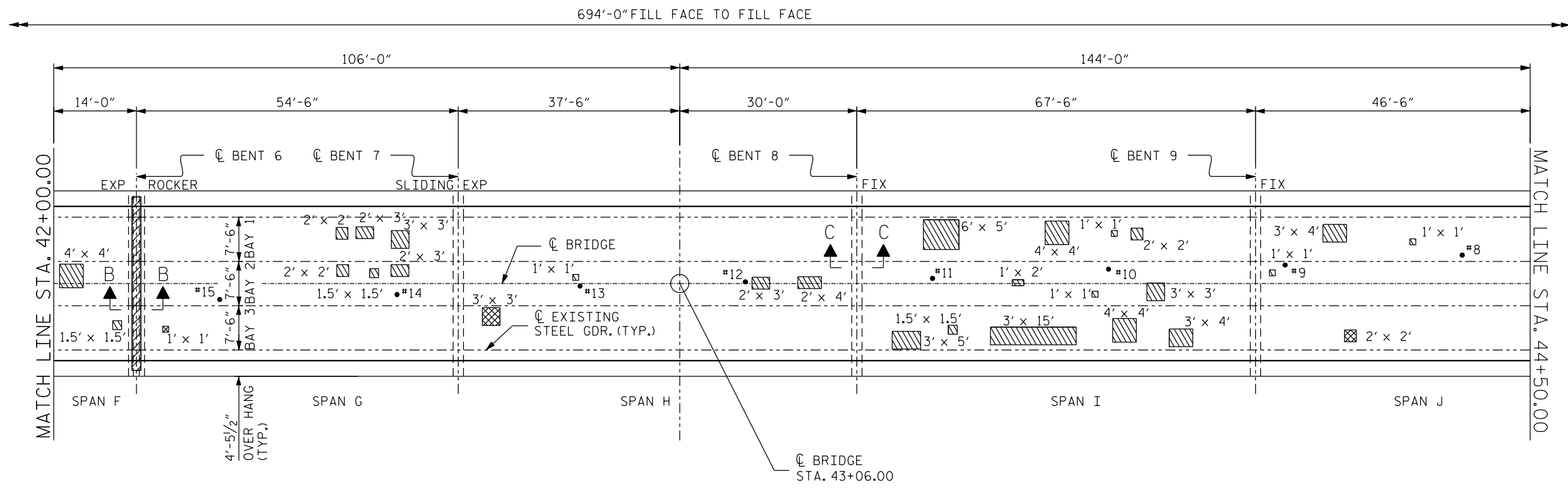
* QUANTITY SHOWN IS FOR INFORMATION ONLY. * INCLUDES APPROACH MILLING.

DRAWN BY: CLB DATE: 3/10
CHECKED BY: AGA DATE: 3/10

PROJECT NO. BK-5101H
COUNTY: WILKES
STATION: 43+06.00
DECK REPAIR BRIDGE NO. 730

STATE OF NORTH CAROLINA
DEPARTMENT OF TRANSPORTATION
RALEIGH
PLAN VIEW OF BRIDGE
#730 ON SR 1185
OVER YADKIN RIVER
26' CLEAR ROADWAY-90° SKEW

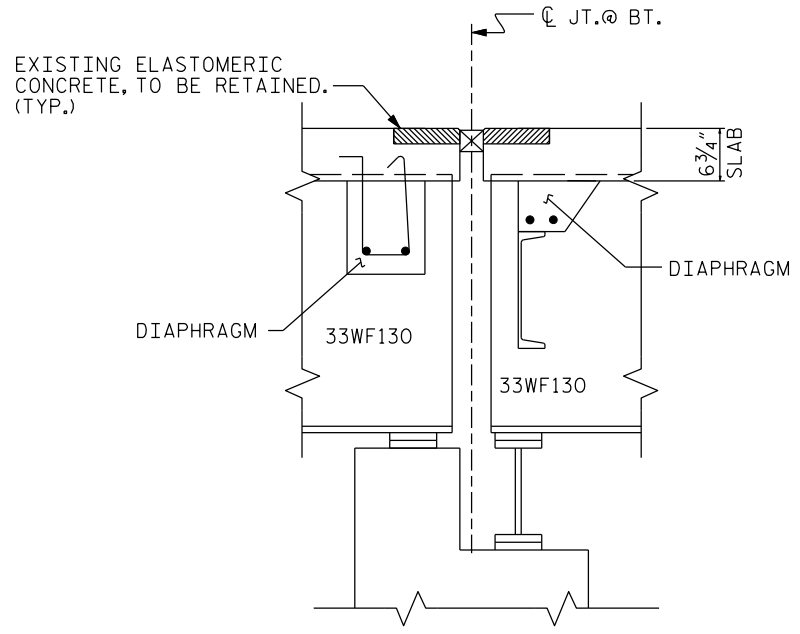
REVISIONS						SHRIT NO.
NO.	BY	DATE	NO.	BY	DATE	TOTAL SHEETS
1			3			6
2			4			



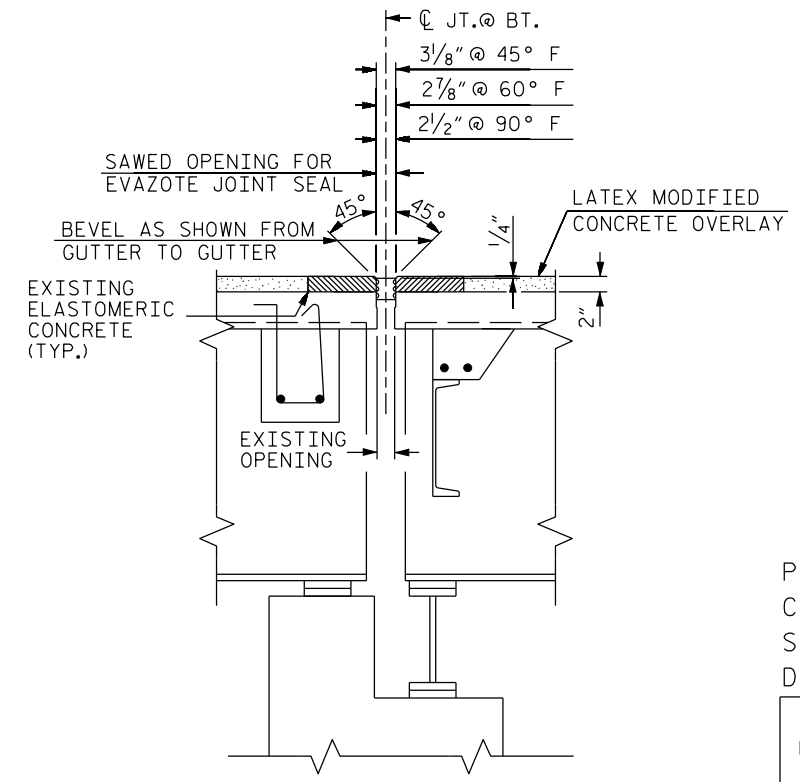
PLAN

NOTES

- FOR EVAZOTE JOINT SEAL, SEE SPECIAL PROVISIONS.
- THE INSTALLED EVAZOTE JOINT SEALS SHALL BE WATERTIGHT.
- NOMINAL UNCOMPRESSED SEAL WIDTH OF EVAZOTE JOINT SEAL SHALL BE 3/2" AT BENTS #6 & #11.
- THE CONTRACTOR WILL NOT BE PERMITTED TO FORM THE JOINT FOR THE EVAZOTE JOINT SEAL IN LIEU OF SAWING THE JOINT.



SECTION B-B
(PROPOSED JOINT REPLACEMENT
DETAIL BENTS #6 & #11)



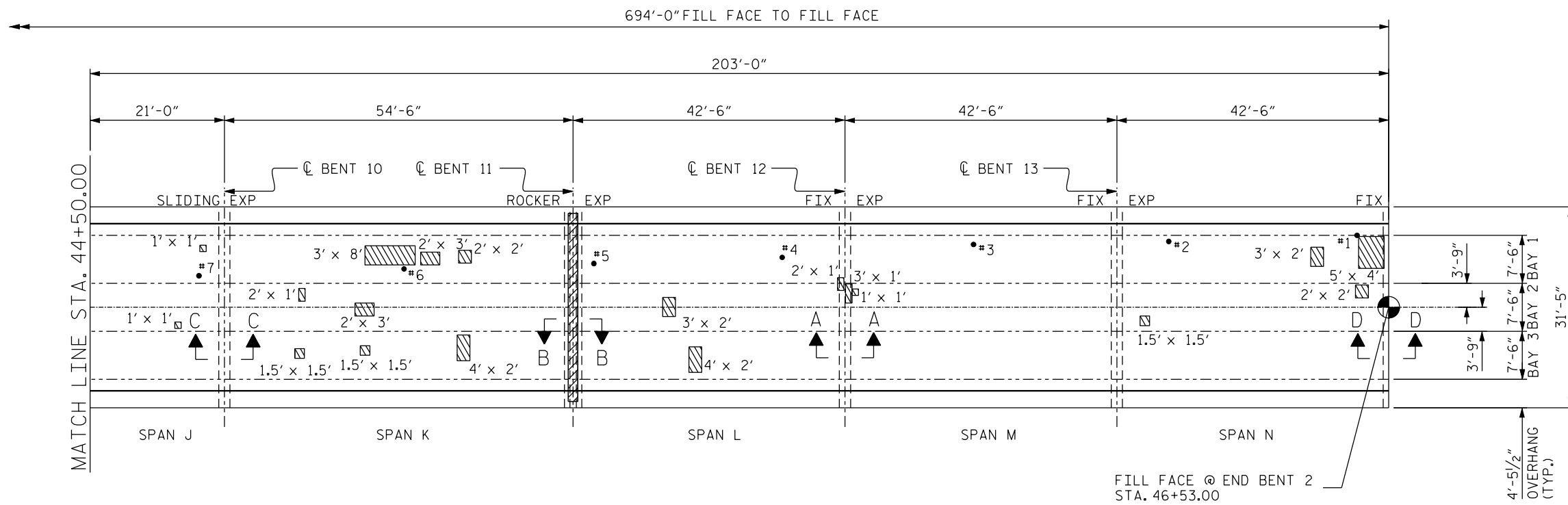
SECTION B-B
(PROPOSED JOINT REPLACEMENT
DETAIL BENTS #6 & #11)

PROJECT NO. BK-5101H
 COUNTY: WILKES
 STATION: 43+06.00
 DECK REPAIR BRIDGE NO. 730

STATE OF NORTH CAROLINA
 DEPARTMENT OF TRANSPORTATION
 RALEIGH
 PLAN VIEW OF BRIDGE
 #730 ON SR 1185
 OVER YADKIN RIVER
 26' CLEAR ROADWAY-90° SKEW

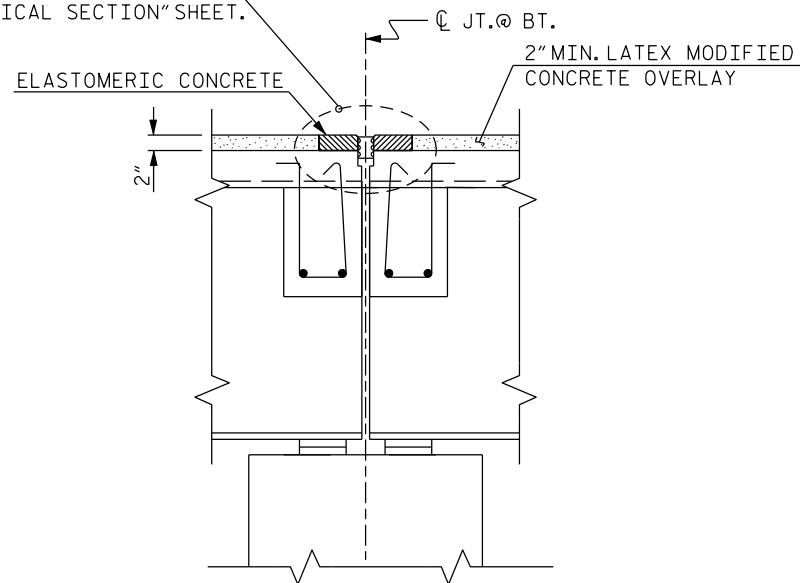
REVISIONS						SHEET NO.
NO.	BY	DATE	NO.	BY	DATE	TOTAL SHEETS
1			3			3
2			4			6

TO US 421 →

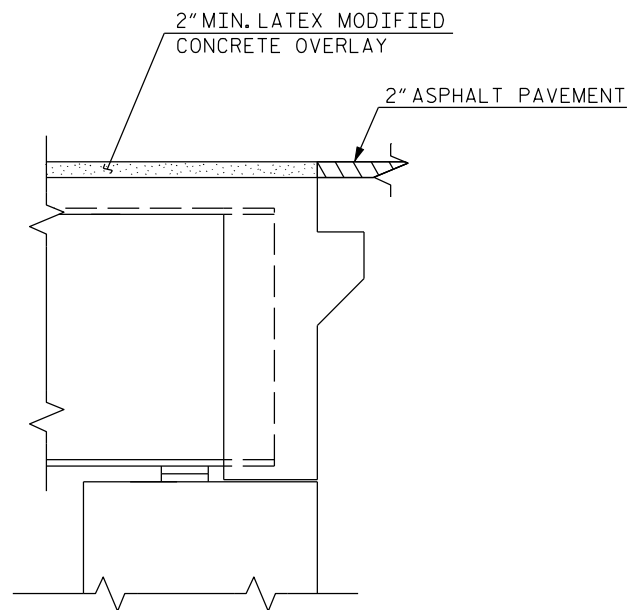


PLAN

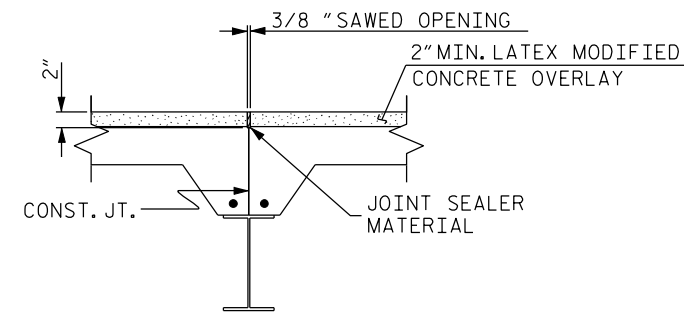
FOR EVAZOTE JOINT DETAILS
SEE "TYPICAL SECTION" SHEET.



SECTION A-A
(PROPOSED JOINT REPLACEMENT
DETAIL BENTS #1 THRU #5
AND BENT #12 & #13)



SECTION D-D
(PROPOSED JOINT REPLACEMENT
DETAIL END BENTS #1 & #2)



SECTION C-C
(PROPOSED JOINT REPLACEMENT
DETAIL BENTS #7 THRU #10)

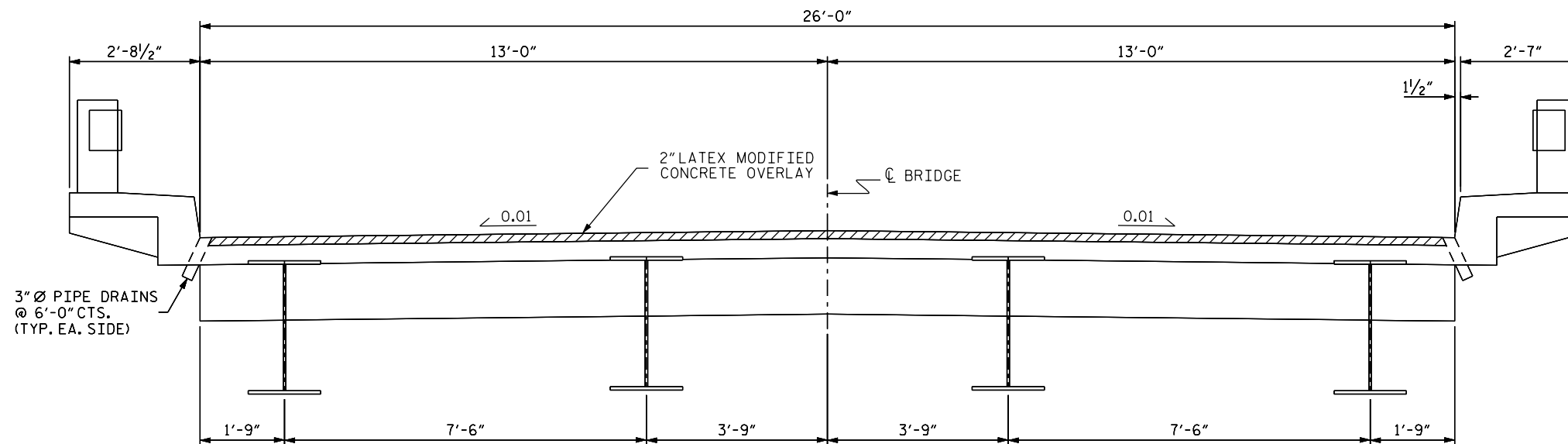
PROJECT NO. BK-5101H
COUNTY: WILKES
STATION: 43+06.00
DECK REPAIR BRIDGE NO. 730

STATE OF NORTH CAROLINA
DEPARTMENT OF TRANSPORTATION
RALEIGH
PLAN VIEW OF BRIDGE
#730 ON SR 1185
OVER YADKIN RIVER
26' CLEAR ROADWAY-90° SKEW

DRAWN BY: CLB DATE: 3/10
CHECKED BY: AGA DATE: 3/10

*****SYTIME*****

REVISIONS						SHEET NO.
NO.	BY	DATE	NO.	BY	DATE	4
1			3			TOTAL SHEETS
2			4			6



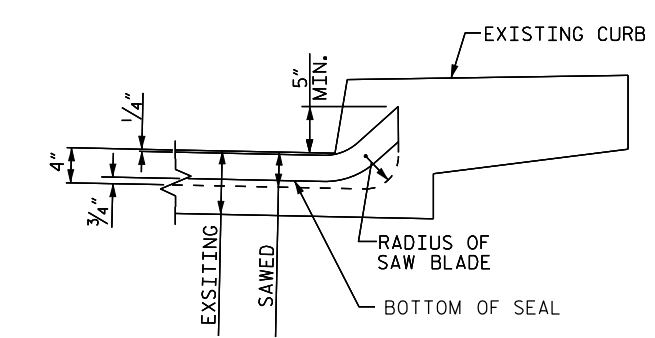
NOTES

FOR EVAZOTE JOINT SEAL, SEE SPECIAL PROVISIONS.

THE INSTALLED EVAZOTE JOINT SEALS SHALL BE WATERTIGHT.

NOMINAL UNCOMPRESSED SEAL WIDTH OF EVAZOTE JOINT SEAL SHALL BE 2 1/2" AT BENTS #1 THRU #5 & #12 & #13.

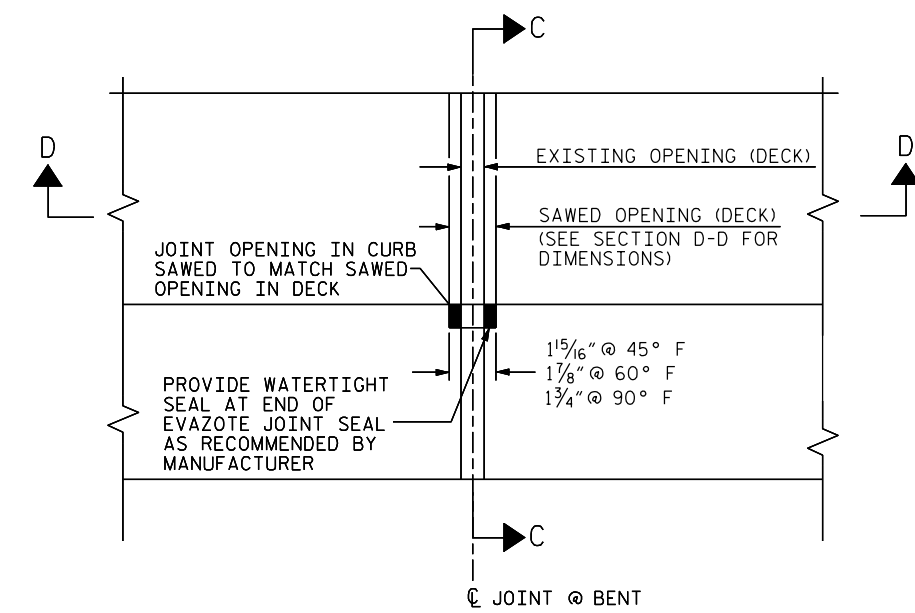
THE CONTRACTOR WILL NOT BE PERMITTED TO FORM THE JOINT FOR THE EVAZOTE JOINT SEAL IN LIEU OF SAWING THE JOINT.



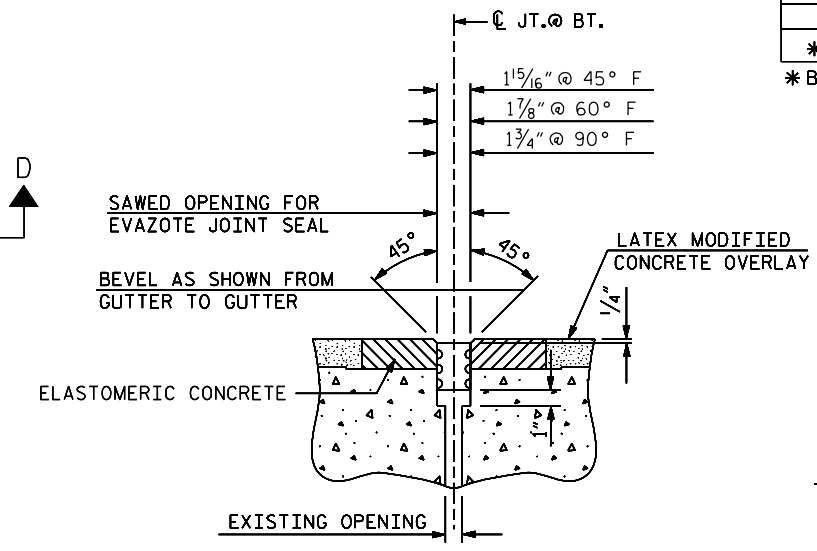
ELASTOMERIC CONCRETE	
BENT #1 THRU #5	19.9 (CU. FT.)
BENTS #12 & #13	7.9 (CU. FT.)
* TOTAL	27.8 (CU. FT.)

* BASED ON THE MINIMUM BLOCKOUT SHOWN.

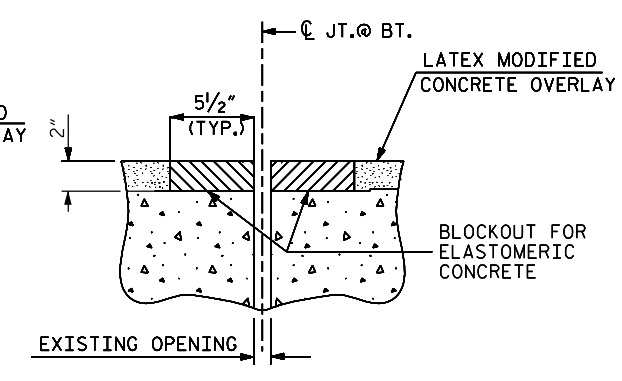
SECTION C-C



PLAN



SECTION D-D
(EVAZOTE JOINT SEAL EXPANSION)



SECTION D-D
EVAZOTE JOINT SEAL
(PRE-SAWED ELASTOMERIC CONCRETE DIMENSIONS)

EVAZOTE JOINT SEAL DETAILS
(FOR BENTS #1 THRU #5 & #12 & #13)

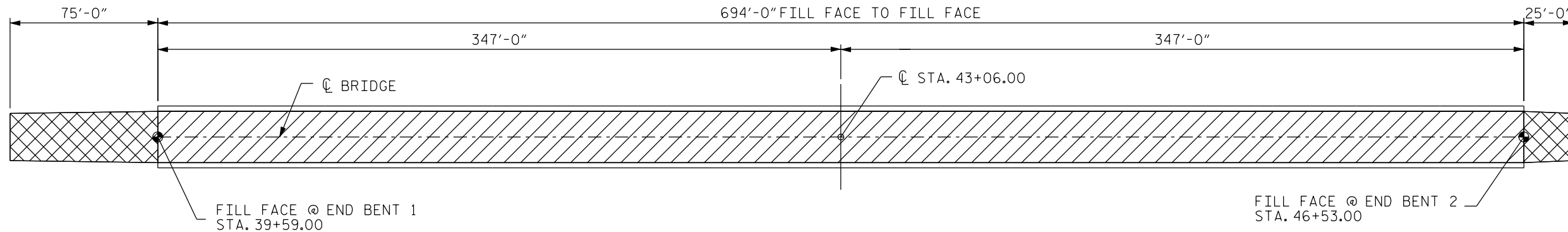
PROJECT NO. BK-5101H
 COUNTY: WILKES
 STATION: 43+06.00
 DECK REHAB BRIDGE NO. 730

STATE OF NORTH CAROLINA DEPARTMENT OF TRANSPORTATION RALEIGH					
TYPICAL SECTION AND JOINT DETAILS					
REVISIONS					SHRIT NO.
NO.	BY	DATE	NO.	BY	DATE
1			3		
2			4		
					5
					TOTAL SHEETS
					6

DRAWN BY: CLB DATE: 01/09
 CHECKED BY: AGA DATE: 01/09

← WILKESBORO

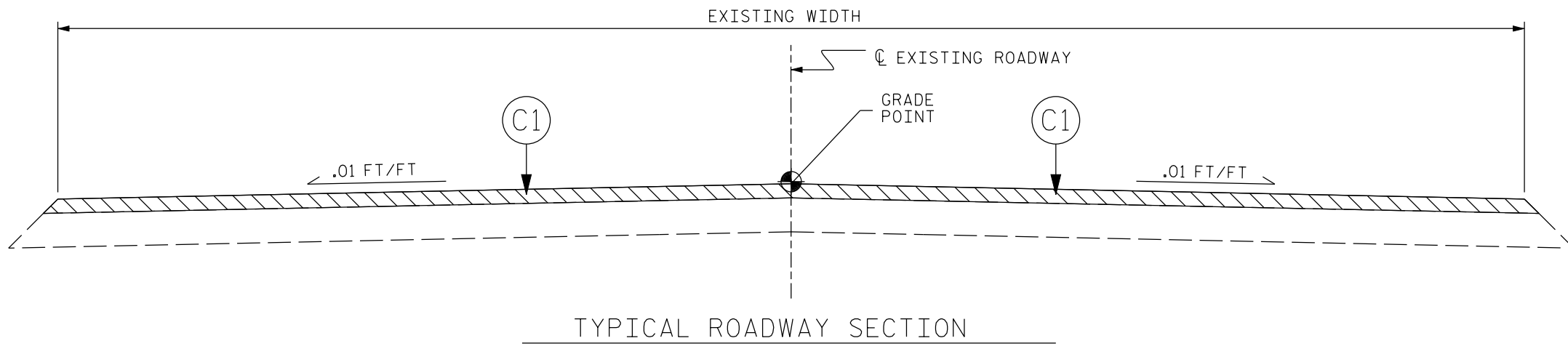
→ TO US 421



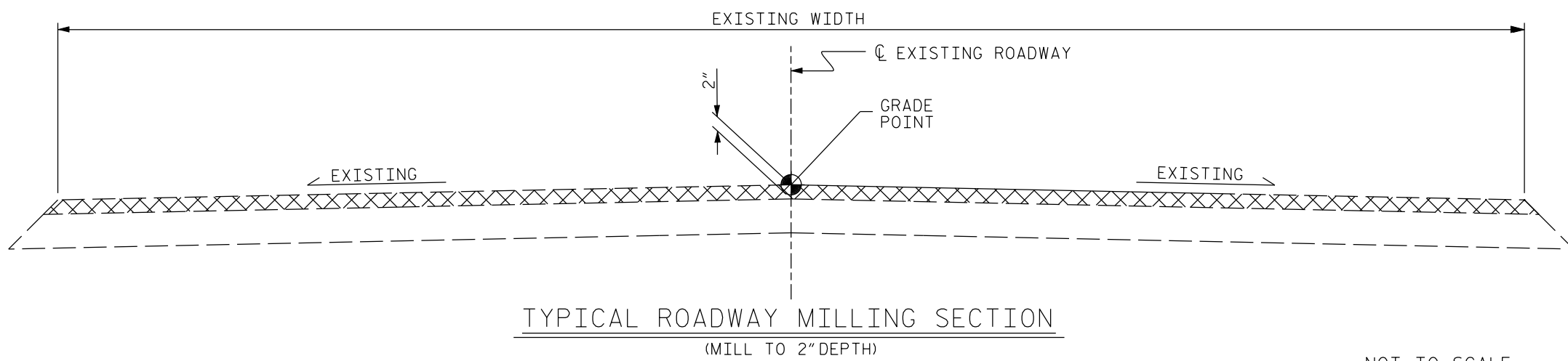
- DECK SCARICATION AND HYDRODEMOLITION
- ASPHALT MILLING

PLAN

C1 PROPOSED VARIABLE DEPTH ASPHALT CONCRETE SURFACE COURSE, TYPE SF 9.5A AT AN AVERAGE RATE OF 110 LBS. PER SQ. YD. PER 1" DEPTH. TO BE PLACED IN LAYERS NOT LESS THAN 1" IN DEPTH OR GREATER THAN 1 1/2" IN DEPTH.



TYPICAL ROADWAY SECTION



TYPICAL ROADWAY MILLING SECTION
(MILL TO 2" DEPTH)

NOT TO SCALE

PROJECT NO. BK-5101H
 COUNTY: WILKES
 STATION: 43+06.00
 DECK REPAIR BRIDGE NO. 730

STATE OF NORTH CAROLINA
 DEPARTMENT OF TRANSPORTATION
 RALEIGH
 ROADWAY TYPICAL SECTION
 &
 MILLING DETAILS

DRAWN BY: CLB DATE: 3/10
 CHECKED BY: AGA DATE: 3/10

REVISIONS						SHEET NO.
NO.	BY	DATE	NO.	BY	DATE	6
1			3			TOTAL SHEETS
2			4			6

*****SYTIME*****