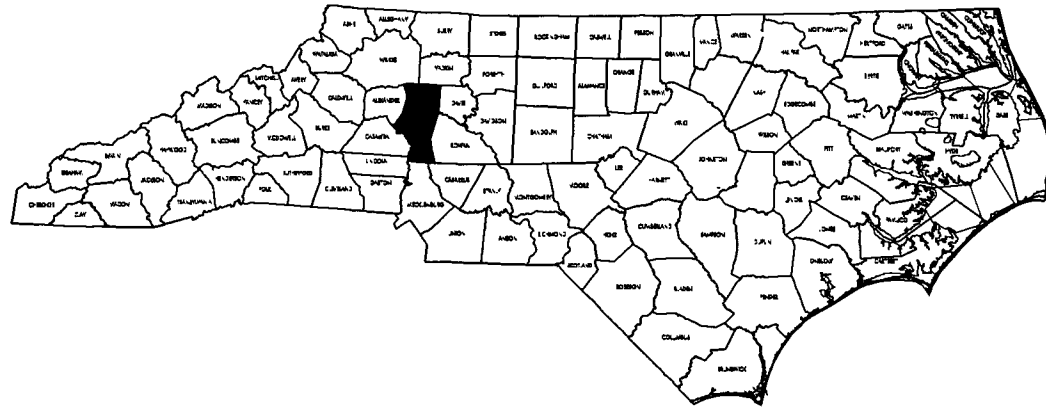


CONTRACT NO. D000063 TIP PROJECT: B-4700AV



STATE OF NORTH CAROLINA  
DIVISION OF HIGHWAYS

**IREDELL COUNTY**

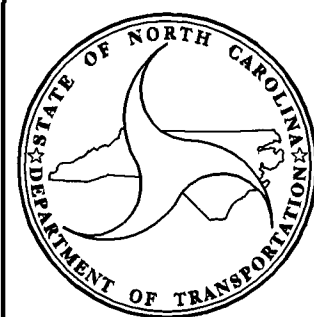
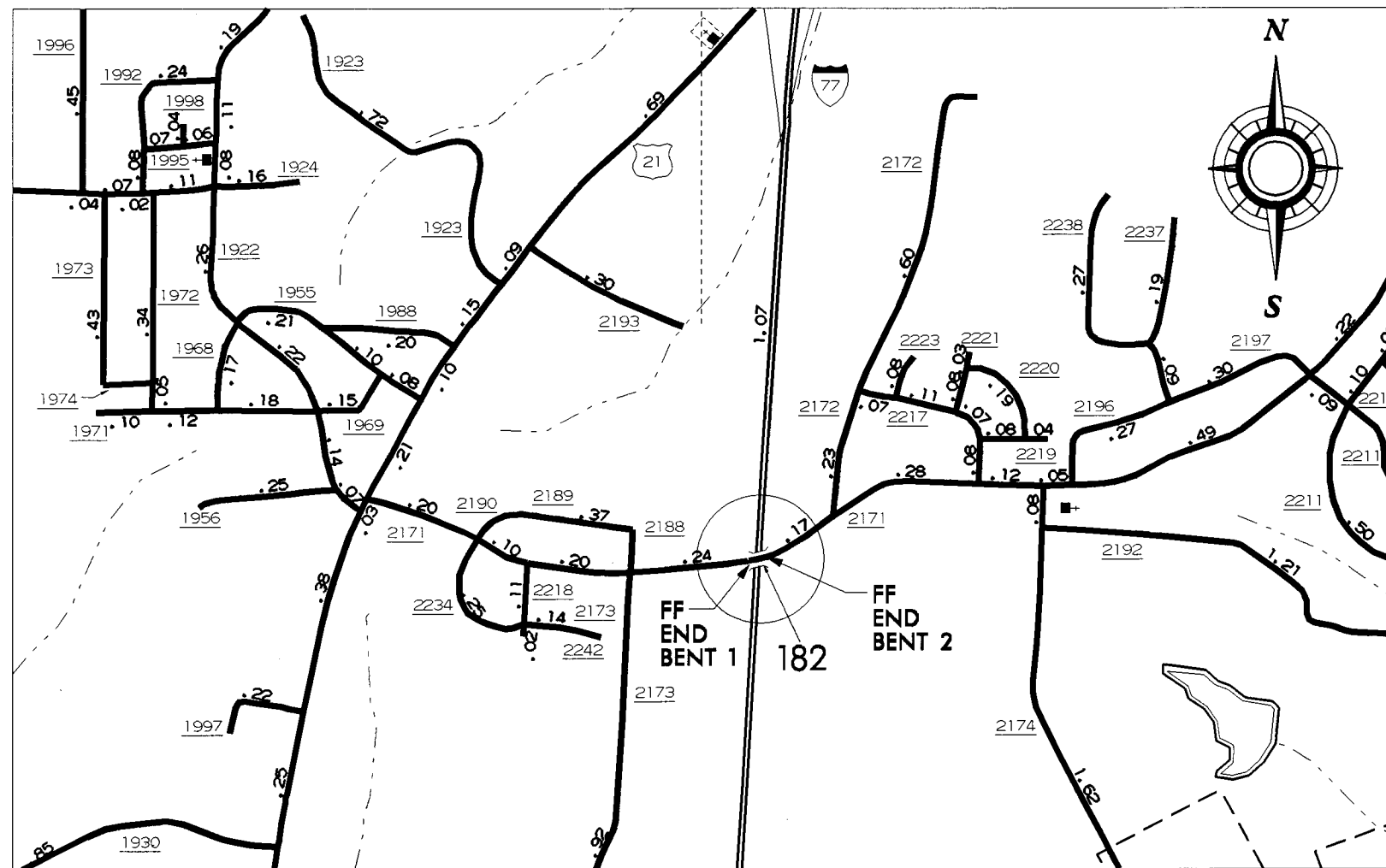
STATE	STATE PROJECT REFERENCE NO.	SHEET NO.	TOTAL SHEETS
N.C.	B-4700AV	1	
STATE PROJ. NO.	F.A. PROJ. NO.	DESCRIPTION	
36727.1.1	BRNHS-000S(504)	P.E.	
36727.3.46	BRNHS-000S(370)	CONST	

LOCATION: BRIDGE #182 ON SR 2171 OVER I 77

TYPE OF WORK: HYDRODEMOLITION & LMC OVERLAY

**TABLE OF CONTENTS**

DWG.	DESCRIPTION
1	TITLE SHEET
S1-S4	STRUCTURE PLANS
TCPI-TCP3	TRAFFIC CONTROL PLANS



DESIGN DATA

PROJECT LENGTH

LENGTH STRUCTURE PROJECT = 0.05 MILE

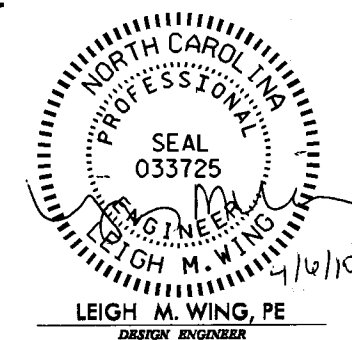
Prepared in the Office of:  
**BRIDGE MANAGEMENT UNIT**  
NORTH CAROLINA DEPARTMENT OF TRANSPORTATION

2006 STANDARD SPECIFICATIONS

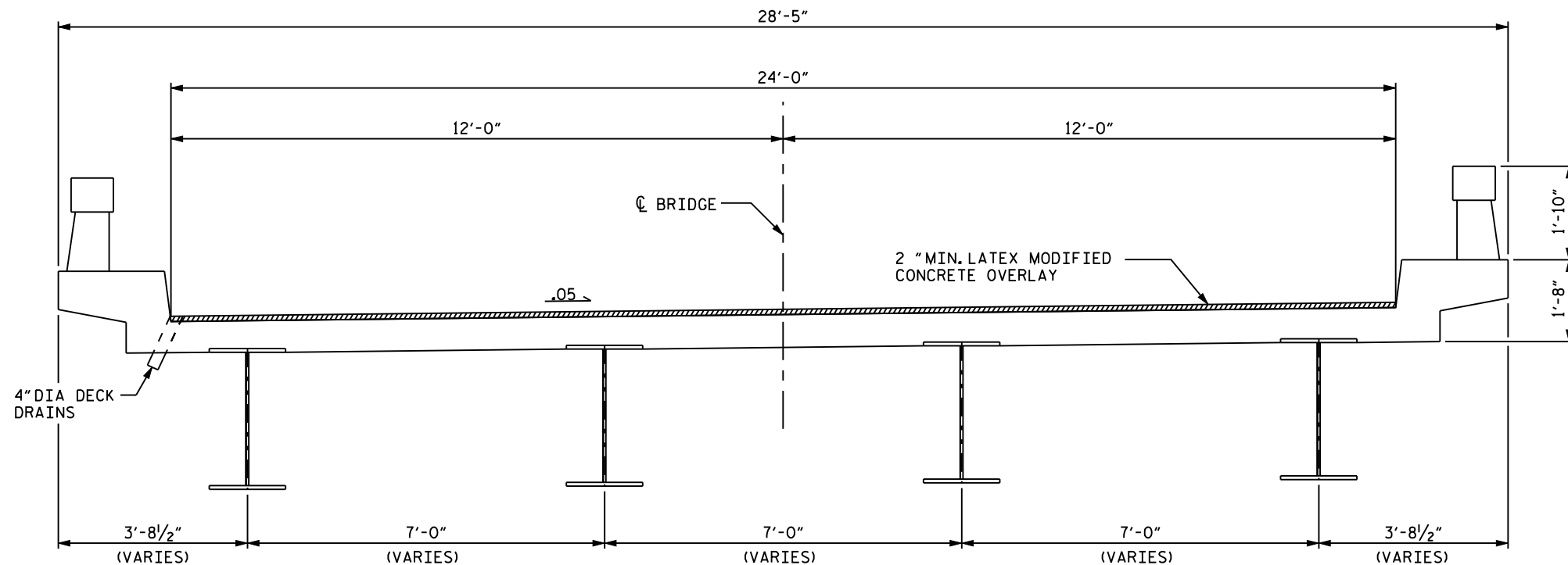
LETTING DATE:  
MAY 20, 2010

DAN HOLDERMAN, PE  
STATE BRIDGE  
MANAGEMENT ENGINEER

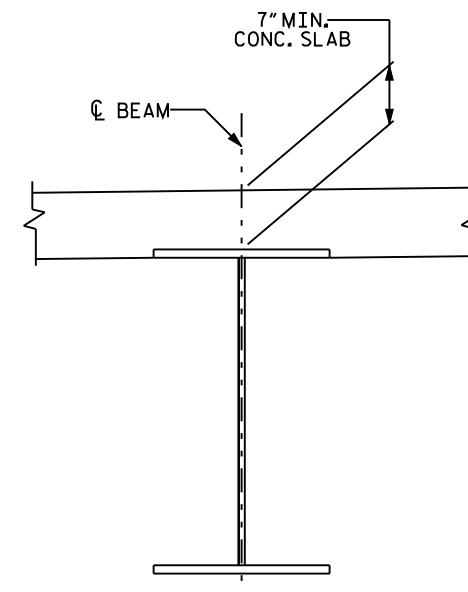
MIKE SUMMERS  
BRIDGE MANAGEMENT  
PROJECT MANAGER



LEIGH M. WING, PE  
DESIGN ENGINEER



TYPICAL SECTION



EXIST. SLAB SECTION

NOTES

- FOR HYDRO-DEMOLITION OF BRIDGE DECK, SEE SPECIAL PROVISIONS.
- THE CONTRACTOR MUST COLLECT, TREAT AND DISPOSE OF RUN-OFF WATER FROM THE HYDRO-DEMOLITION PROCESS. SEE "HYDRO-DEMOLITION OF BRIDGE DECK" SPECIAL PROVISION.
- THE BOUNDARIES OF AREAS IDENTIFIED FOR CLASS III SURFACE PREPARATION ARE APPROXIMATE, THE CONTRACTOR SHALL PROVIDE A METHOD OF HANDLING UNEXPECTED BLOW THROUGH OF THE DECK. SEE "TYP. "BLOW THRU" CONTAINMENT AND FORMWORK" DETAIL.
- THE NOMINAL UNCOMPRESSED SEAL WIDTH OF THE EVAZOTE JOINT SEAL SHALL BE 2 1/2" AT BENTS 1, 2, AND 3. FOR EVAZOTE JOINT SEALS, SEE SPECIAL PROVISIONS.
- FOR ELASTOMERIC CONCRETE FOR JOINT REPAIR, SEE SPECIAL PROVISIONS.
- FOR LATEX MODIFIED CONCRETE, SEE SPECIAL PROVISIONS.
- FOR GROOVING BRIDGE FLOORS INFORMATION, SEE "LATEX MODIFIED CONCRETE" SPECIAL PROVISION.
- FOR SUBMITTAL OF WORKING DRAWINGS, SEE SPECIAL PROVISIONS.
- FOR FALSEWORK AND FORMWORK, SEE SPECIAL PROVISIONS.
- BRIDGE DECK DRAINS SHALL BE PLUGGED DURING HYDRODEMOLITION PROCESS.

TOTAL BILL OF MATERIAL

** SCARIFYING BRIDGE DECK	* CLASS I SURFACE PREPARATION	* CLASS II SURFACE PREPARATION	* CLASS III SURFACE PREPARATION	* CLASS AA CONCRETE	HYDRO-DEMOLITION OF BRIDGE DECK	LATEX MODIFIED CONCRETE	PLACING & FINISHING LATEX MODIFIED CONCRETE	EVAZOTE JOINT SEALS	GROOVING BRIDGE FLOOR	ASPHALT CONCRETE SURFACE COURSE TYPE SF 9.5B
SO.YDS.	SO.YDS.	SO.YDS.	SO.YDS.	CU. YDS.	SO.YDS.	C.Y.	SO.YDS.	LUMP SUM	SO. FT.	TONS
739	489	17	78	5	584	41	584	LUMP SUM	4,712	17

\* QUANTITY SHOWN IS FOR INFORMATION ONLY. \*\* INCLUDES APPROACH MILLING.

PROJECT NO. B-4700AV  
 COUNTY: IREDELL  
 DECK REHAB BRIDGE NO.182

STATE OF NORTH CAROLINA  
 DEPARTMENT OF TRANSPORTATION  
 RALEIGH

TYPICAL SECTION  
 FOR BRIDGE #182

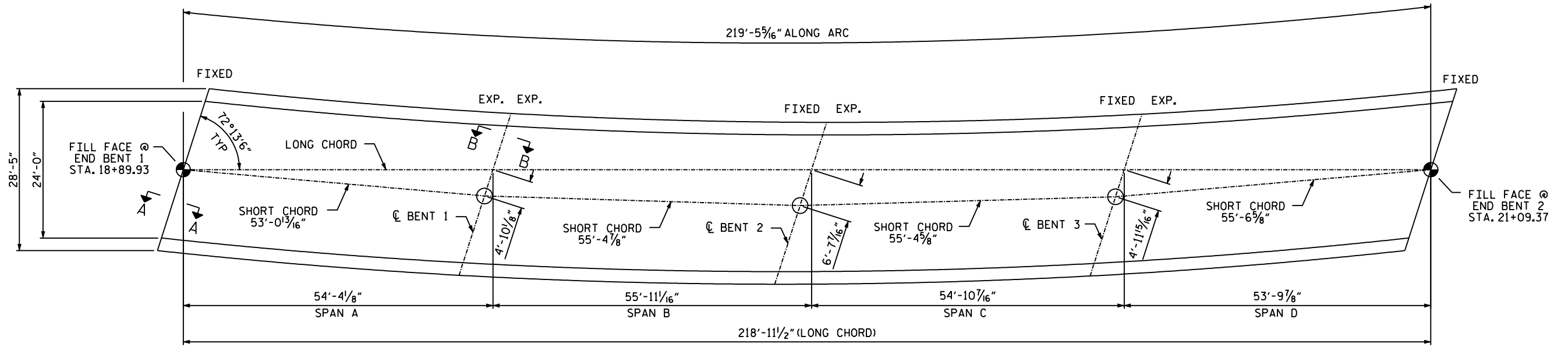
24'-0" CLEAR ROADWAY

REVISIONS						SHIRT NO.
NO.	BY	DATE	NO.	BY	DATE	S-1
1			3			TOTAL SHEETS
2			4			4

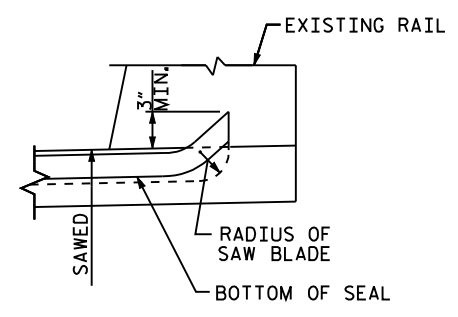
DRAWN BY : LMW DATE : 01/10  
 CHECKED BY : AGA DATE : 01/10

NOTE: NOT TO SCALE

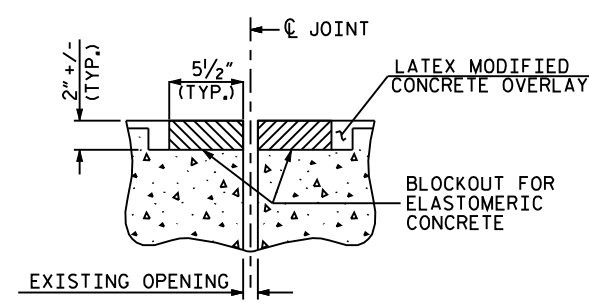
\*\*\*\*\*SYSTEMTIME\*\*\*\*\*  
 \*\*\*\*\*USERNAME\*\*\*\*\*



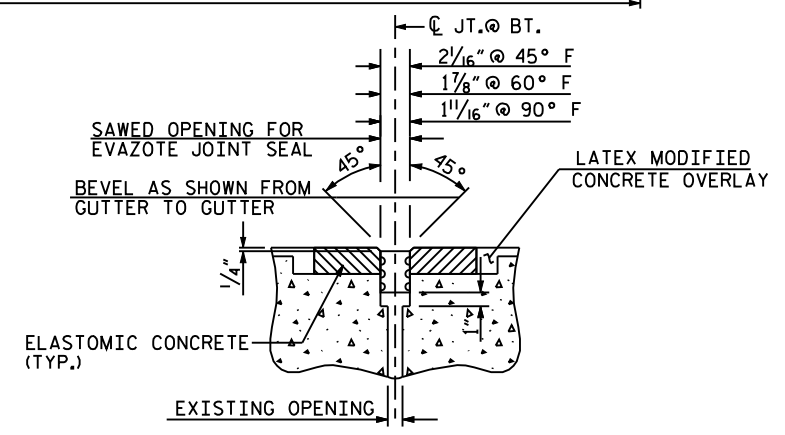
PLAN VIEW



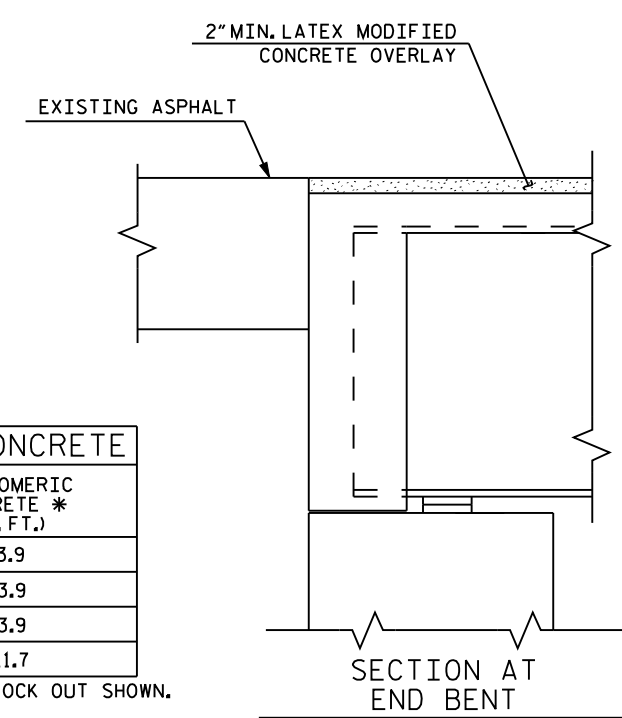
JOINT DETAIL AT RAIL



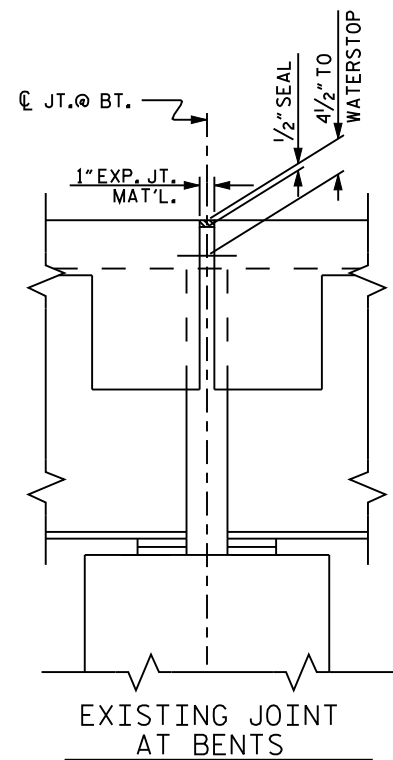
EVAZOTE JOINT SEAL  
PRE-SAWED ELASTOMERIC CONCRETE DIMENSIONS



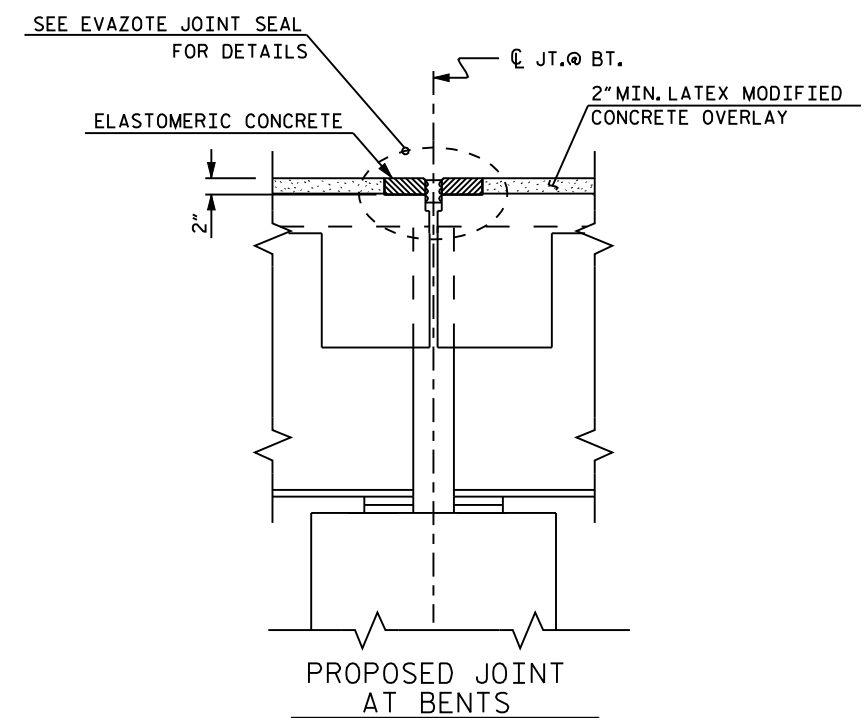
PROP. JOINT AT BENTS  
EVAZOTE JOINT SEAL EXPANSION



SECTION A-A



EXISTING JOINT AT BENTS



SECTION B-B

ELASTOMERIC CONCRETE	
BENT NO.	ELASTOMERIC CONCRETE * (CU. FT.)
BENT 1	3.9
BENT 2	3.9
BENT 3	3.9
TOTAL	11.7

\* BASED ON THE MINIMUM BLOCK OUT SHOWN.

PROJECT NO. B-4700AV  
 COUNTY: IREDELL  
 DECK REHAB BRIDGE NO. 182

STATE OF NORTH CAROLINA  
 DEPARTMENT OF TRANSPORTATION  
 RALEIGH  
 PLAN VIEW &  
 JOINT DETAILS  
 FOR BRIDGE #182  
 24'-0" CLEAR ROADWAY

REVISIONS				NO.	DATE
NO.	BY	DATE	NO.		
1			3		
2			4		

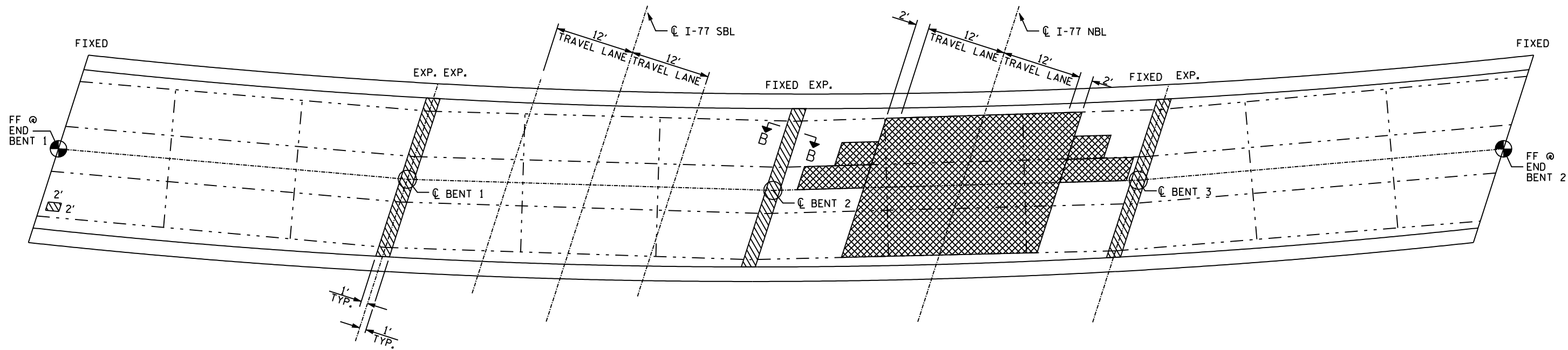
SHEET NO. S-2  
 TOTAL SHEETS 4

NOTE: NOT TO SCALE

DRAWN BY : LMW DATE : 01/10  
 CHECKED BY : EBN DATE : 01/10

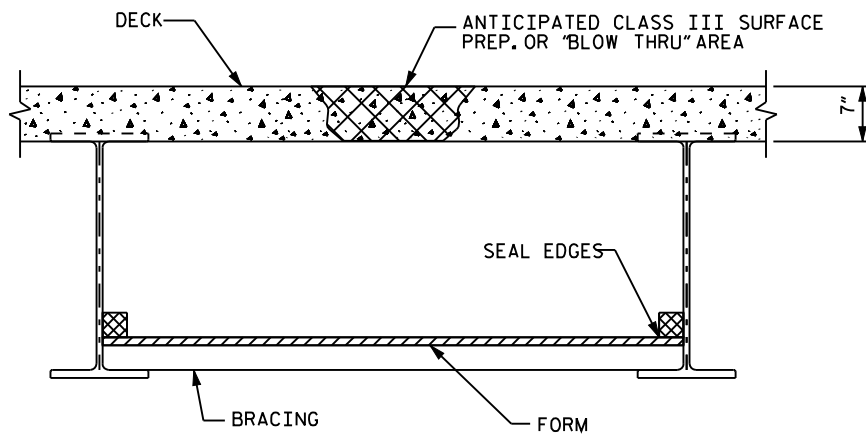
\*\*\*\*\*SYSTEMTIME\*\*\*\*\*  
 \*\*\*\*\*USER\*\*\*\*\*

\*\*\*\*\*DGN\*\*\*\*\*



PLAN OF SPANS - DECK REPAIRS

- APPROX. AREA: CLASS II REPAIR
- APPROX. AREA: CLASS III REPAIR



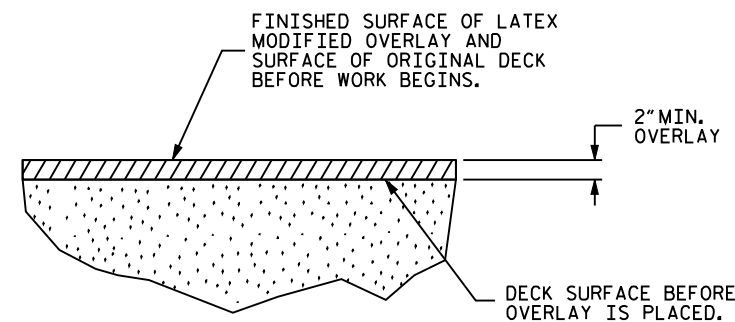
TYP. "BLOW THRU" CONTAINMENT AND FORMWORK

A METHOD TO CAPTURE WATER AND DEBRIS FROM BLOW THRU DURING HYDRO-DEMOLITION SHALL BE INSTALLED IN AREAS INDICATED AS CLASS III SURFACE PREPARATION.

SUBMIT DETAILS OF PROPOSED FORM WORK FOR APPROVAL PRIOR TO BEGINNING WORK.

COST FOR INSTALLING AND REMOVING FORM WORK SHALL BE INCIDENTAL TO THE PRICE PER SQ. YARD OF HYDRO-DEMOLITION.

CONTRACTOR, AT HIS OPTION, MAY CHOOSE TO MONITOR HYDRO-DEMOLITION WORK AND CONTROL TRAFFIC UNDER THE BRIDGE IN LIEU OF BLOW THRU CONTAINMENT. SEE TRAFFIC CONTROL PLANS.



DETAIL FOR LATEX MODIFIED CONCRETE OVERLAY

PROJECT NO. B-4700AV  
 COUNTY: IREDELL  
 DECK REHAB BRIDGE NO. 182

STATE OF NORTH CAROLINA  
 DEPARTMENT OF TRANSPORTATION  
 RALEIGH

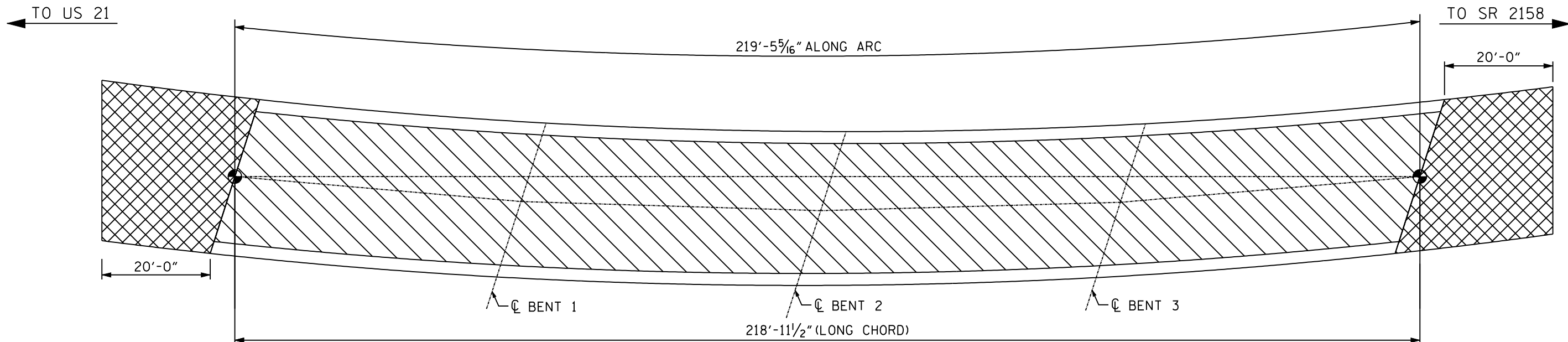
DECK REPAIR DETAILS  
 FOR BRIDGE #182

24'-0" CLEAR ROADWAY

REVISIONS						SHEET NO. S-3
NO.	BY	DATE	NO.	BY	DATE	
1			3			TOTAL SHEETS 4
2			4			

DRAWN BY : LMW      DATE : 01/10  
 CHECKED BY : EBN      DATE : 01/10

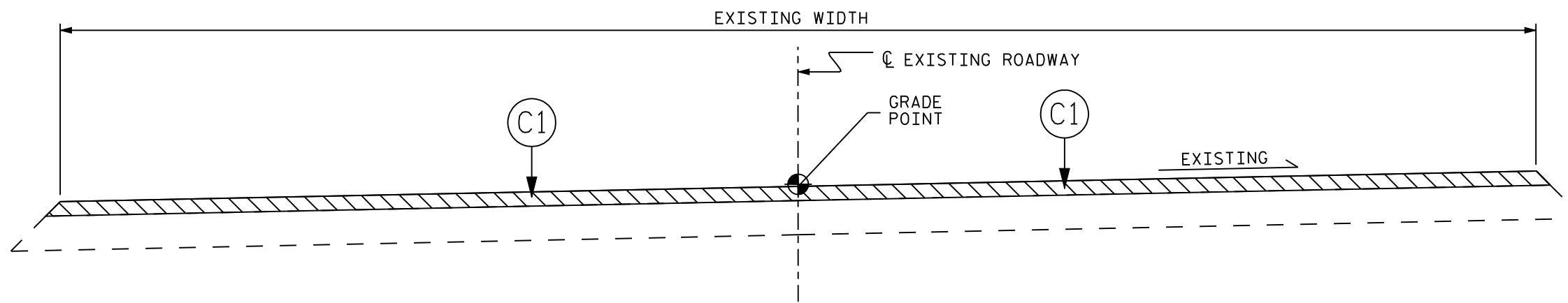
NOTE: NOT TO SCALE



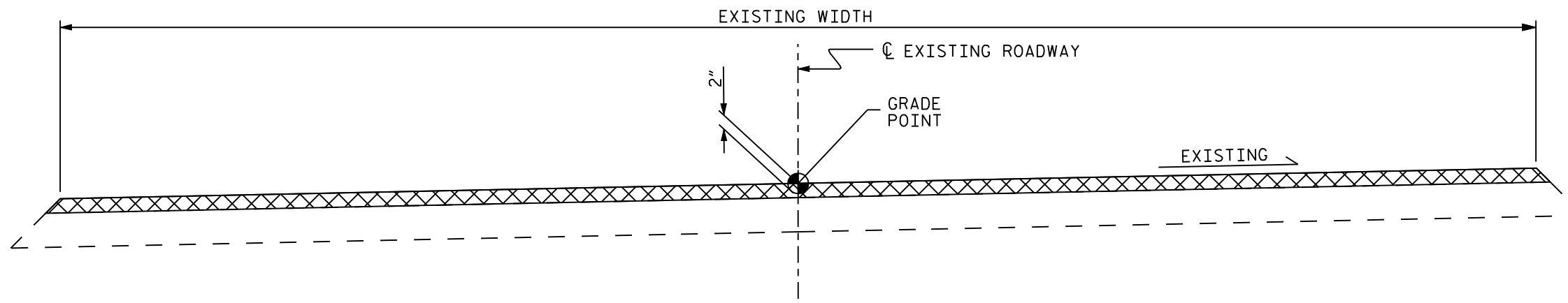
- DECK SCARIFICATION & HYDRODEMOLITION
- ASPHALT MILLING & RESURFACING

C1 PROPOSED VARIABLE DEPTH ASPHALT CONCRETE SURFACE COURSE, TYPE SF 9.5B AT AN AVERAGE RATE OF 110 LBS. PER SQ. YD. PER 1" DEPTH, TO BE PLACED IN LAYERS NOT LESS THAN 1" IN DEPTH OR GREATER THAN 1 1/2" IN DEPTH.

PLAN



TYPICAL ROADWAY SECTION



TYPICAL ROADWAY MILLING SECTION  
(MILL TO 2" DEPTH)

PROJECT NO. B-4700AV  
 COUNTY: IREDELL  
 DECK REPAIR BRIDGE NO. 182

STATE OF NORTH CAROLINA  
 DEPARTMENT OF TRANSPORTATION  
 RALEIGH  
 TYPICAL SECTION  
 & MILLING DETAILS  
 FOR BRIDGE #182  
 24'-0" CLEAR ROADWAY

REVISIONS						SHEET NO. S-4
NO.	BY	DATE	NO.	BY	DATE	
1			3			TOTAL SHEETS 4
2			4			

DRAWN BY: LMW DATE: 01/10  
 CHECKED BY: EBN DATE: 01/10

NOTE: NOT TO SCALE