

TIP PROJECT: F-5006

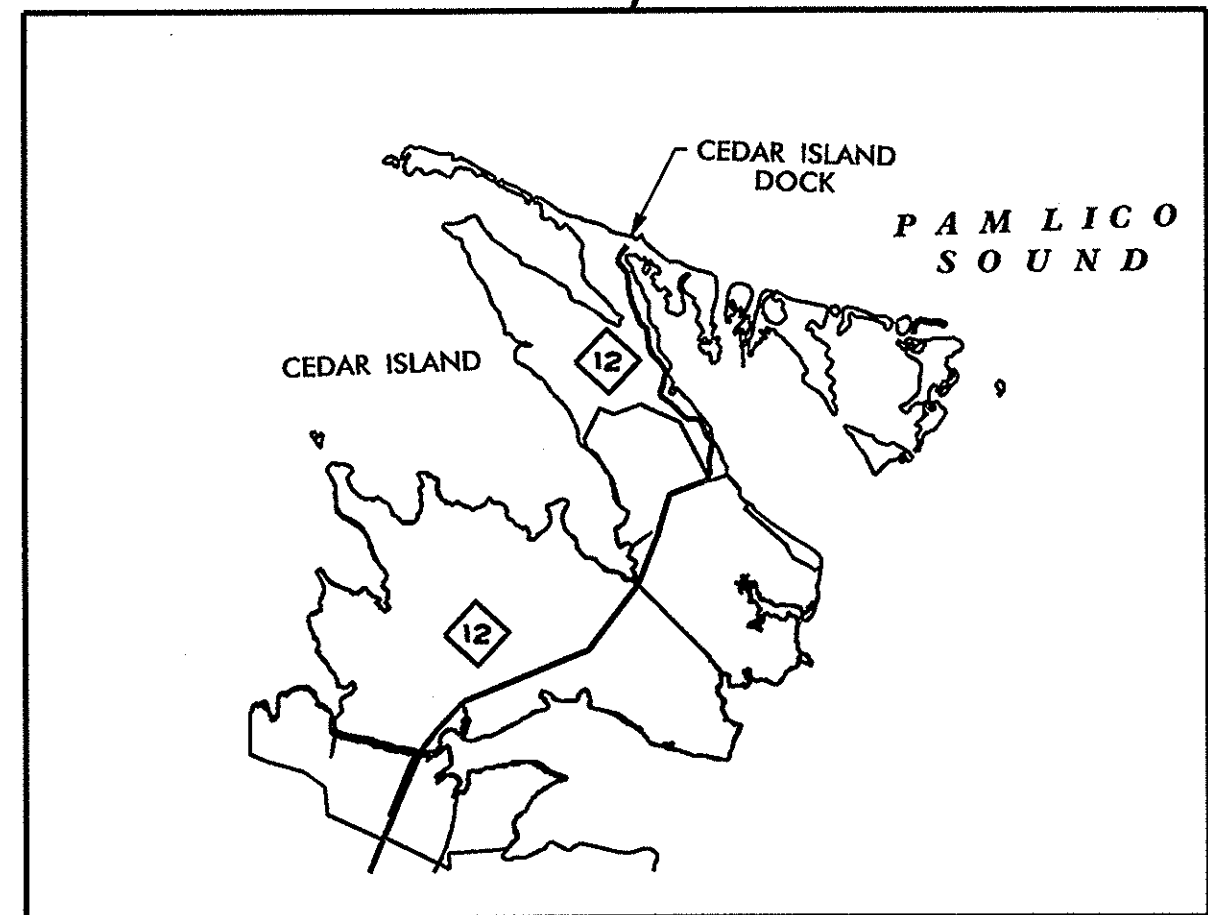
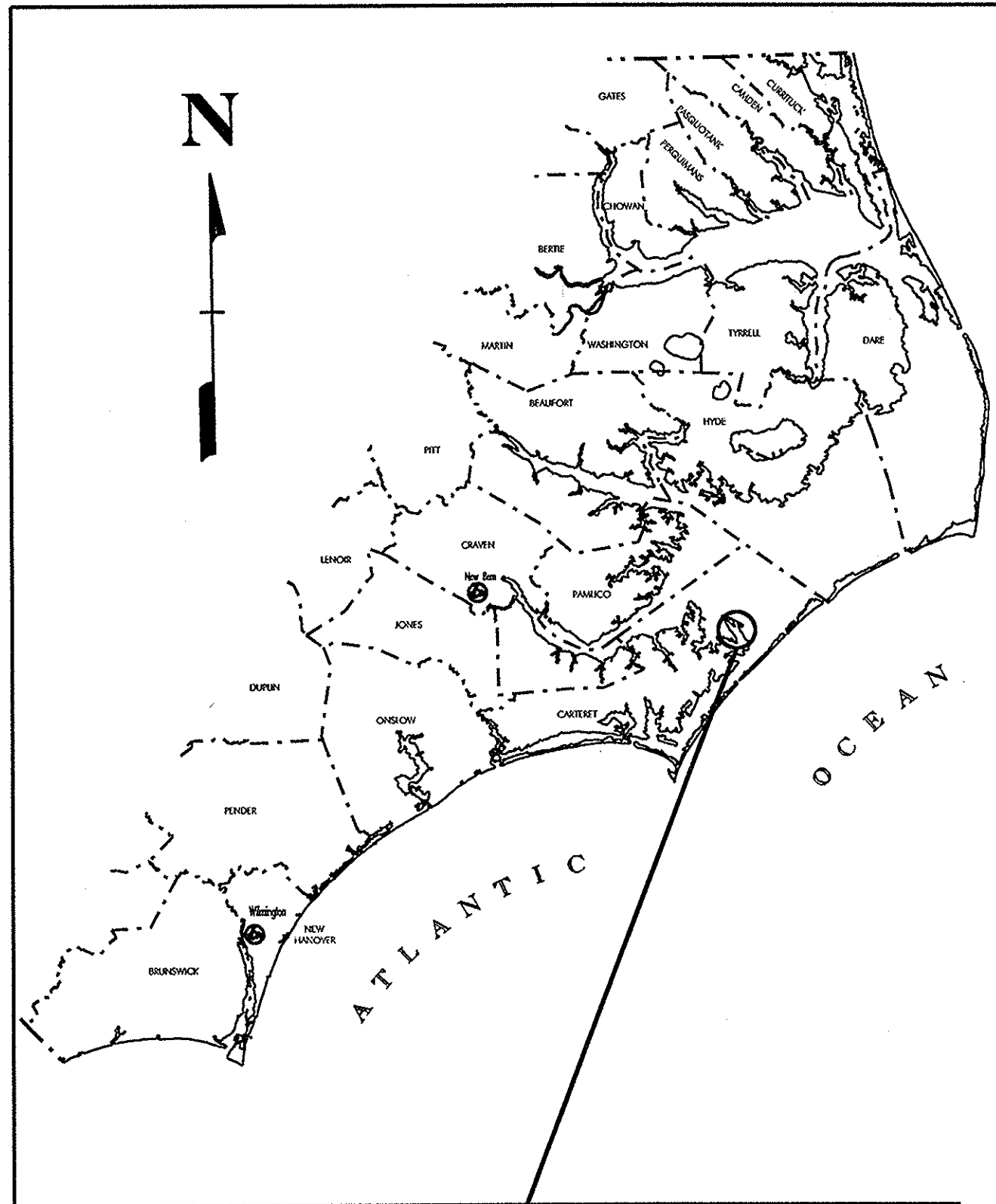
CONTRACT: D000148

STATE	STATE PROJECT REFERENCE NO.	SHEET NO.	TOTAL SHEETS
N.C.	F-5006		
STATE PROJ. NO.	P.A. PROJ. NO.	DESCRIPTION	
41152.1.1		P.E.	
41152.2.1		RW & UTIL.	
41152.3.1		CONST.	

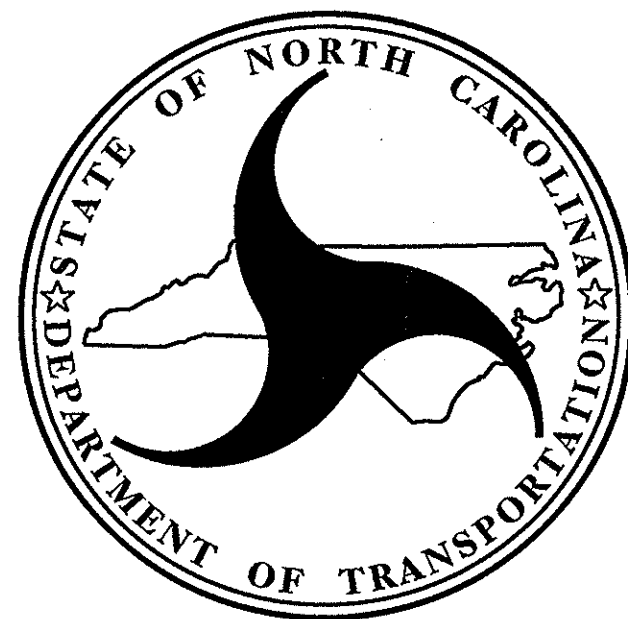
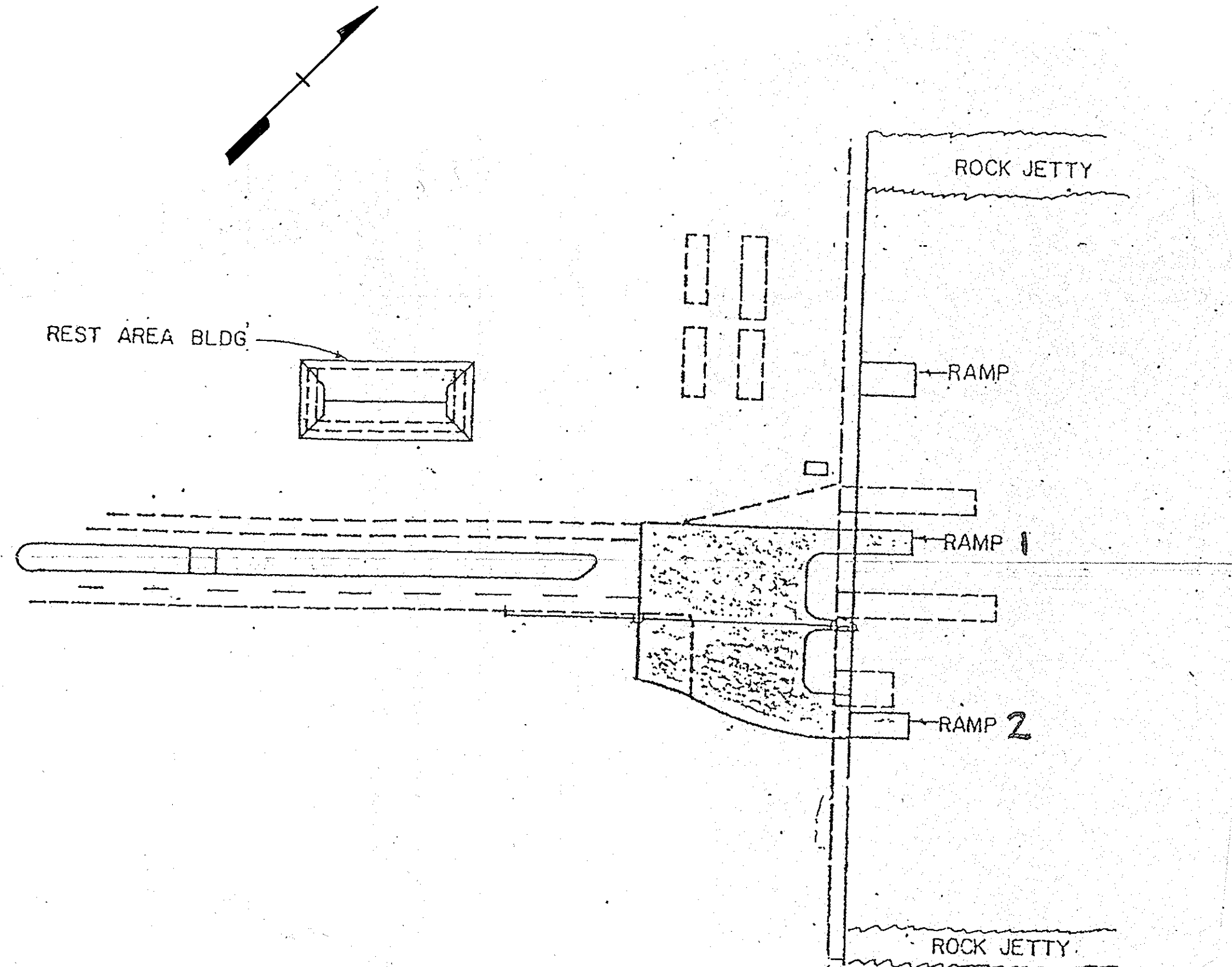
STATE OF NORTH CAROLINA
DIVISION OF HIGHWAYS

CARTERET COUNTY

LOCATION: NC 12 AT CEDAR ISLAND FERRY DOCK
TYPE OF WORK: SAFETY IMPROVEMENTS, PAINTING, LIFT SYSTEM REPLACEMENT,
& STRUCTURAL MAINTENANCE



VICINITY MAP



Prepared In the Office of:

DIVISION OF HIGHWAYS
1000 BIRCH RIDGE DR. RALEIGH, NC 27610

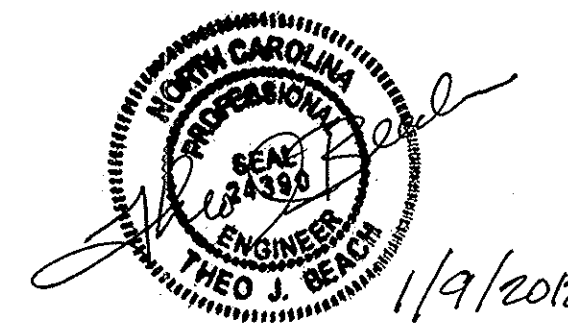
2006 STANDARD SPECIFICATIONS

LETTING DATE:
JANUARY 26, 2012

N.N. BULLOCK, PE
PROJECT ENGINEER

D.R. CALHOUN, PE
PROJECT DESIGN ENGINEER

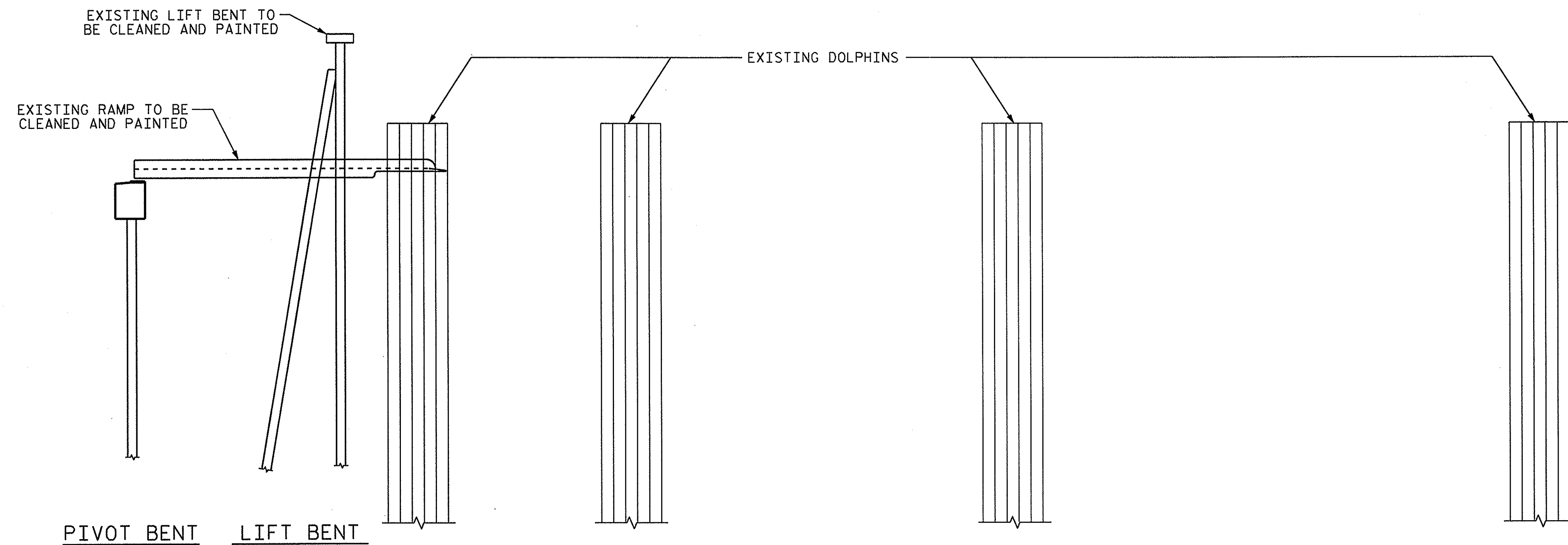
STRUCTURE DESIGN UNIT



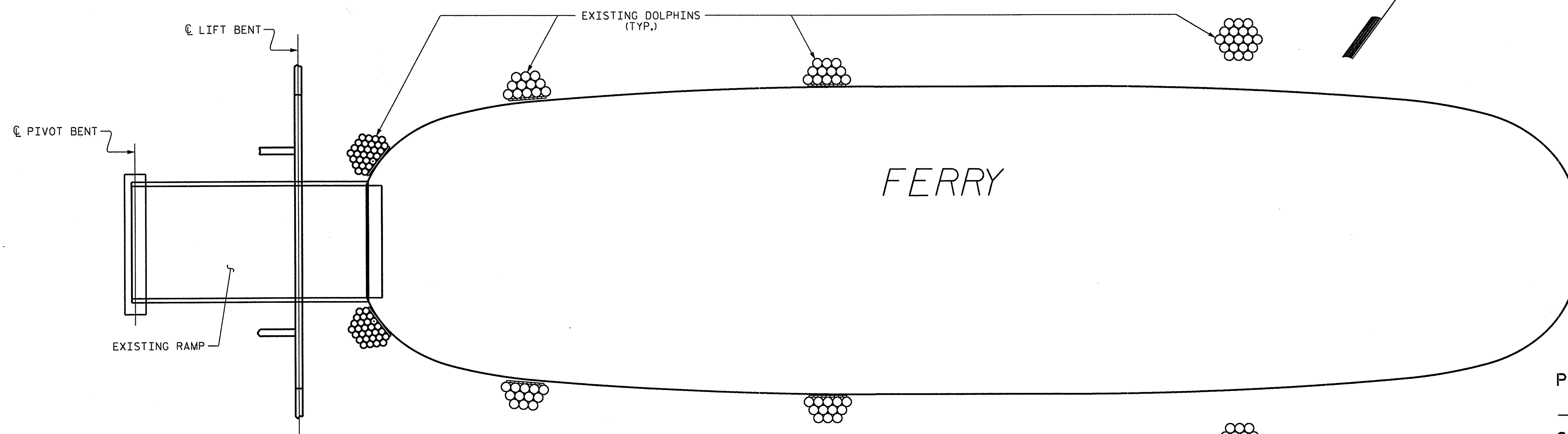
DIVISION OF HIGHWAYS
STATE OF NORTH CAROLINA

STATE DESIGN ENGINEER
DEPARTMENT OF TRANSPORTATION
FEDERAL HIGHWAY ADMINISTRATION

APPROVED
DIVISION ADMINISTRATOR DATE



SECTION ALONG Q RAMP
(TYPICAL BOTH RAMPS)



PLAN
(TYPICAL BOTH RAMPS)

NOTES:
 FOR SECURING OF VESSELS, SEE SPECIAL PROVISIONS.
 FOR SUBMITTAL OF WORKING DRAWINGS, SEE SPECIAL PROVISIONS.
 FOR CRANE SAFETY, SEE SPECIAL PROVISIONS.
 FOR HIGH STRENGTH BOLTS, SEE SPECIAL PROVISIONS.
 FOR SCOPE OF WORK, SEE SPECIAL PROVISIONS.
 FOR CLEANING AND PAINTING THE EXISTING LIFT BENTS, SEE SPECIAL PROVISIONS.
 FOR CLEANING AND PAINTING THE EXISTING RAMPS, SEE SPECIAL PROVISIONS.
 FOR LIFT SYSTEM, SEE SPECIAL PROVISIONS.
 FOR SKID RESISTANT COATING, SEE SPECIAL PROVISIONS.
 FOR REPLACEMENT OF STRUCTURAL BOLTS, SEE SPECIAL PROVISIONS.
 THE CONSTRUCTION SHALL BE STAGED SO THAT ONLY ONE OF THE RAMPS WILL BE UNDER CONSTRUCTION AT EACH SITE. FERRY SERVICE WILL BE MAINTAINED AT ALL TIMES.

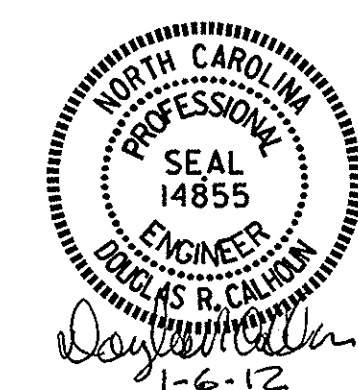
TOTAL BILL OF MATERIAL						
	MOBILIZATION	REPLACE LIFT SYSTEM	SKID RESISTANT COATING	CLEANING & PAINTING OF THE EXISTING LIFT BENT	CLEANING & PAINTING THE EXISTING RAMP	BOLT REPLACEMENT
	LUMP SUM	LUMP SUM	LUMP SUM	LUMP SUM	LUMP SUM	EACH
RAMP 1	LUMP SUM	LUMP SUM	LUMP SUM	LUMP SUM	LUMP SUM	400
RAMP 2		LUMP SUM	LUMP SUM	LUMP SUM	LUMP SUM	400
TOTAL	LUMP SUM	LUMP SUM	LUMP SUM	LUMP SUM	LUMP SUM	800

PROJECT NO. F-5006
CARTERET COUNTY
 STATION: _____
 SHEET 1 OF 2

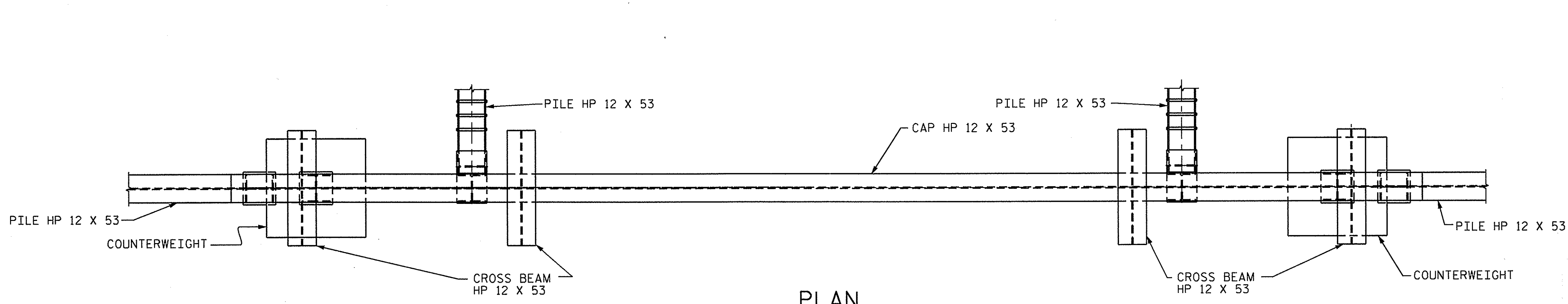
STATE OF NORTH CAROLINA
 DEPARTMENT OF TRANSPORTATION
 RALEIGH

**GENERAL DRAWING
 CEDAR ISLAND DOCK**

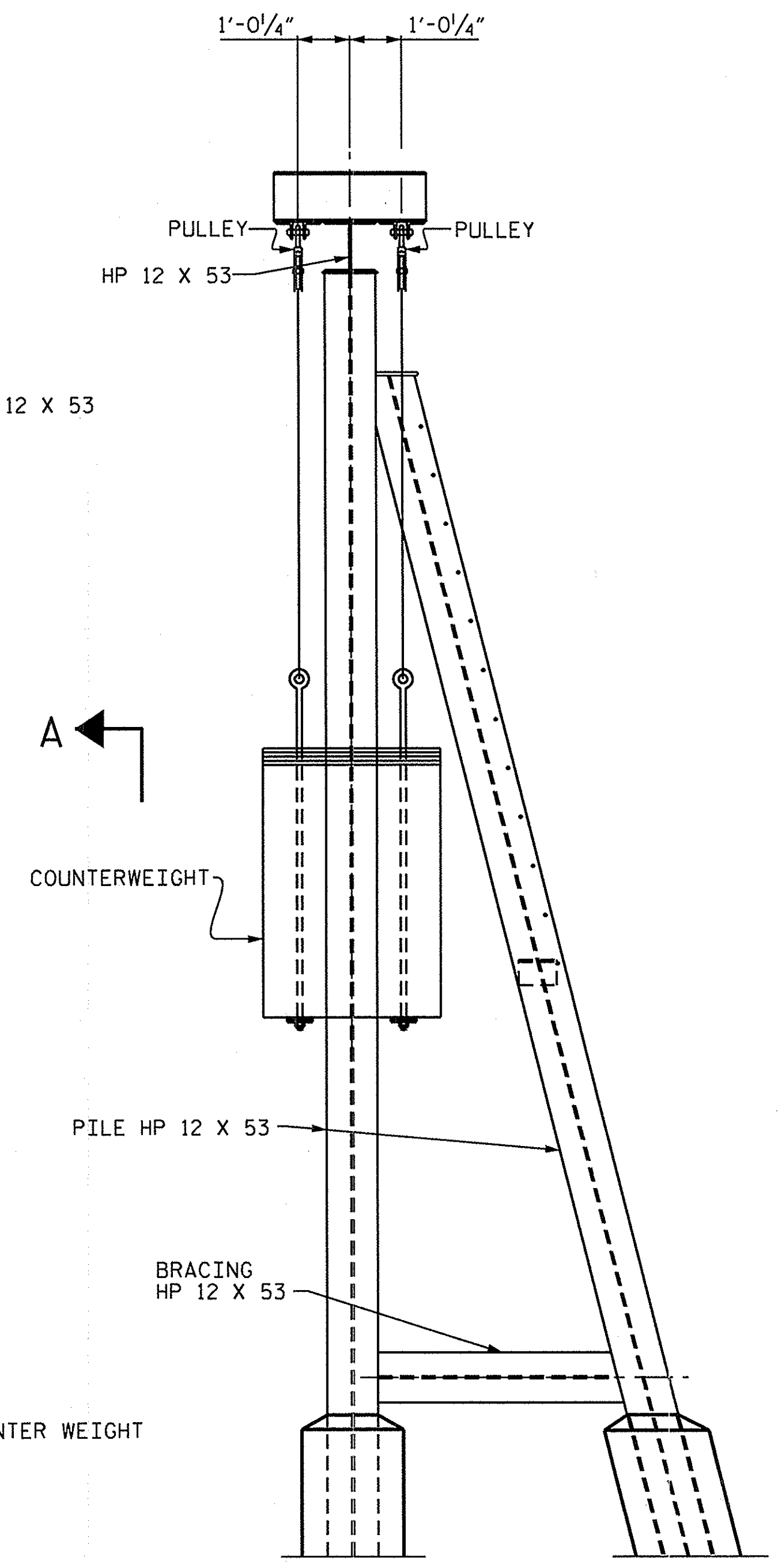
REVISIONS						SHEET NO.
NO.	BY:	DATE:	NO.	BY:	DATE:	TOTAL SHEETS
1			3			5-1
2			4			2



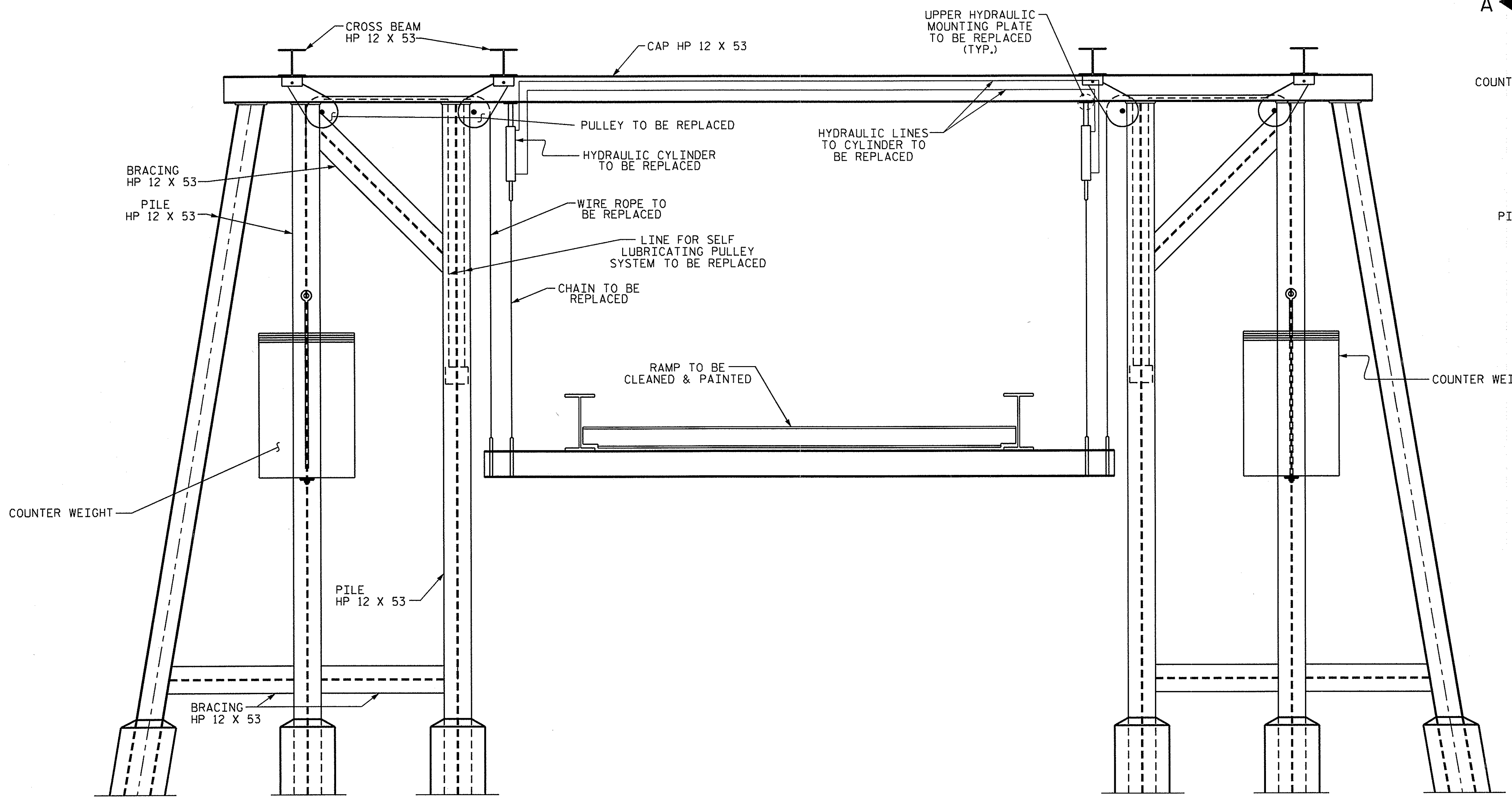
DRAWN BY : B.N. GRADY DATE : 10/5/11
 CHECKED BY : N.N. BULLOCK DATE : 10/11/11



PLAN

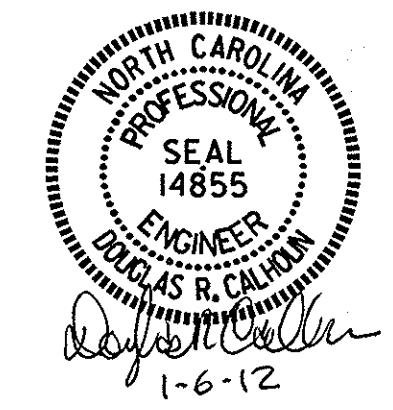


VIEW A-A



ELEVATION

PROJECT NO. F-5006
CARTERET COUNTY
 STATION: _____



SHEET 2 OF 2

STATE OF NORTH CAROLINA
 DEPARTMENT OF TRANSPORTATION
 RALEIGH

LIFT BENT
 CEDAR ISLAND DOCK
 (RAMP 1 & 2)

DRAWN BY : B.N. GRADY DATE : 10/5/11
 CHECKED BY : N.N. BULLOCK DATE : 10/11/11

REVISIONS						SHEET NO.
NO.	BY:	DATE:	NO.	BY:	DATE:	TOTAL SHEETS
1			3			5-2
2			4			2