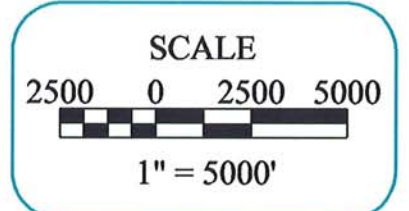


SHEET  
14

SHEET PREPARED DECEMBER, 2005

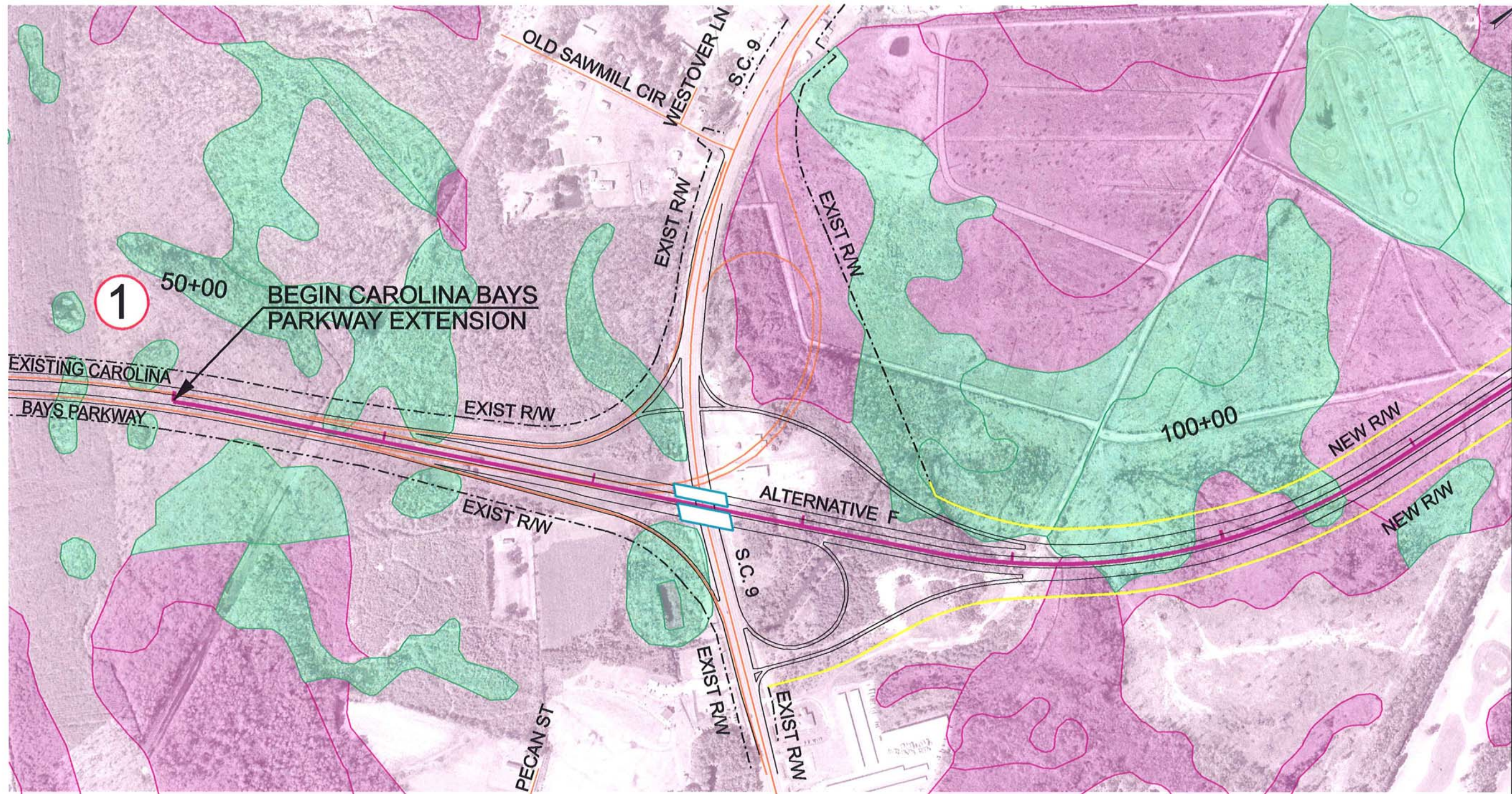


**CAROLINA BAYS PARKWAY EXTENSION**  
 HORRY COUNTY, SOUTH CAROLINA  
 BRUNSWICK COUNTY, NORTH CAROLINA  
**CORRIDOR MAPS**



**SHEET LAYOUT**  
 ALTERNATIVE F





MATCH TO MAP 58

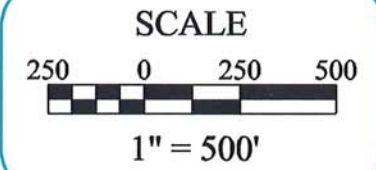
LEGEND			
	SC HIGH QUALITY WETLANDS		NC EXCEPTIONAL WETLANDS
	SC WETLANDS		100 YEAR FLOODPLAIN
	NC BENEFICIAL WETLANDS		PROPOSED BRIDGE
	NC SUBSTANTIAL WETLANDS		PROPOSED CENTERLINE
	NEW RIGHT-OF-WAY		THREATENED AND ENDANGERED SPECIES
	RECREATIONAL AREAS		CULTURAL RESOURCES
	CHURCH / CEMETERY		POTENTIAL HAZARDOUS MATERIALS
	PUBLIC SCHOOLS		

MAPS PREPARED DECEMBER, 2005  
 S.C. PHOTOGRAPHY DATE 2001  
 N.C. PHOTOGRAPHY DATE 2003

MAP 57

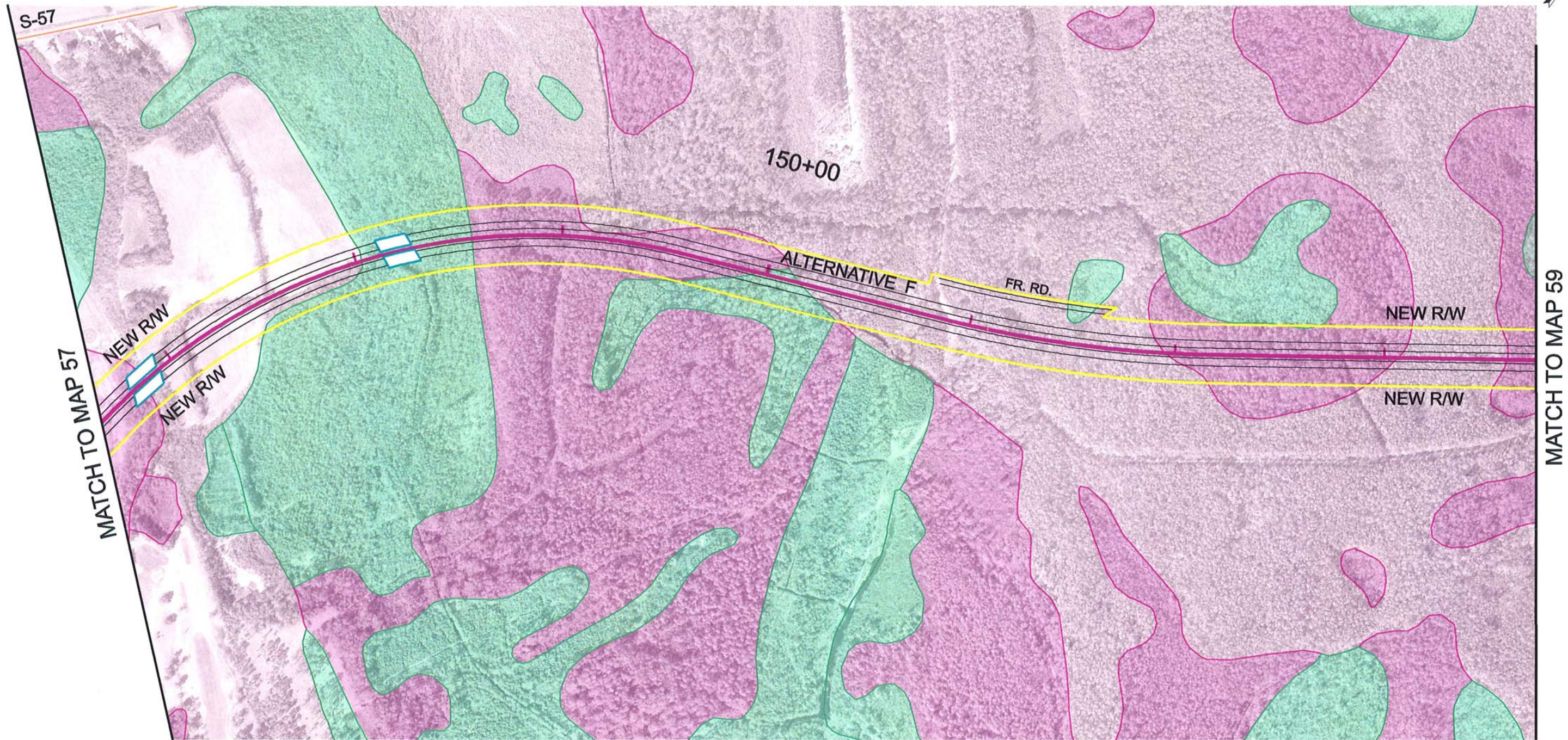


**CAROLINA BAYS PARKWAY EXTENSION**  
 HORRY COUNTY, SOUTH CAROLINA  
**CORRIDOR MAPS**



**ALTERNATIVE F**





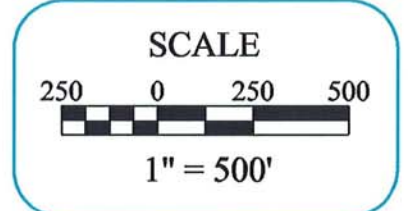
LEGEND			
	SC HIGH QUALITY WETLANDS		NC EXCEPTIONAL WETLANDS
	SC WETLANDS		100 YEAR FLOODPLAIN
	NC BENEFICIAL WETLANDS		PROPOSED BRIDGE
	NC SUBSTANTIAL WETLANDS		PROPOSED CENTERLINE
	NEW RIGHT-OF-WAY		THREATENED AND ENDANGERED SPECIES
	RECREATIONAL AREAS		CULTURAL RESOURCES
	CHURCH / CEMETERY		POTENTIAL HAZARDOUS MATERIALS
	PUBLIC SCHOOLS		

MAPS PREPARED DECEMBER, 2005  
 S.C. PHOTOGRAPHY DATE 2001  
 N.C. PHOTOGRAPHY DATE 2003

MAP  
58

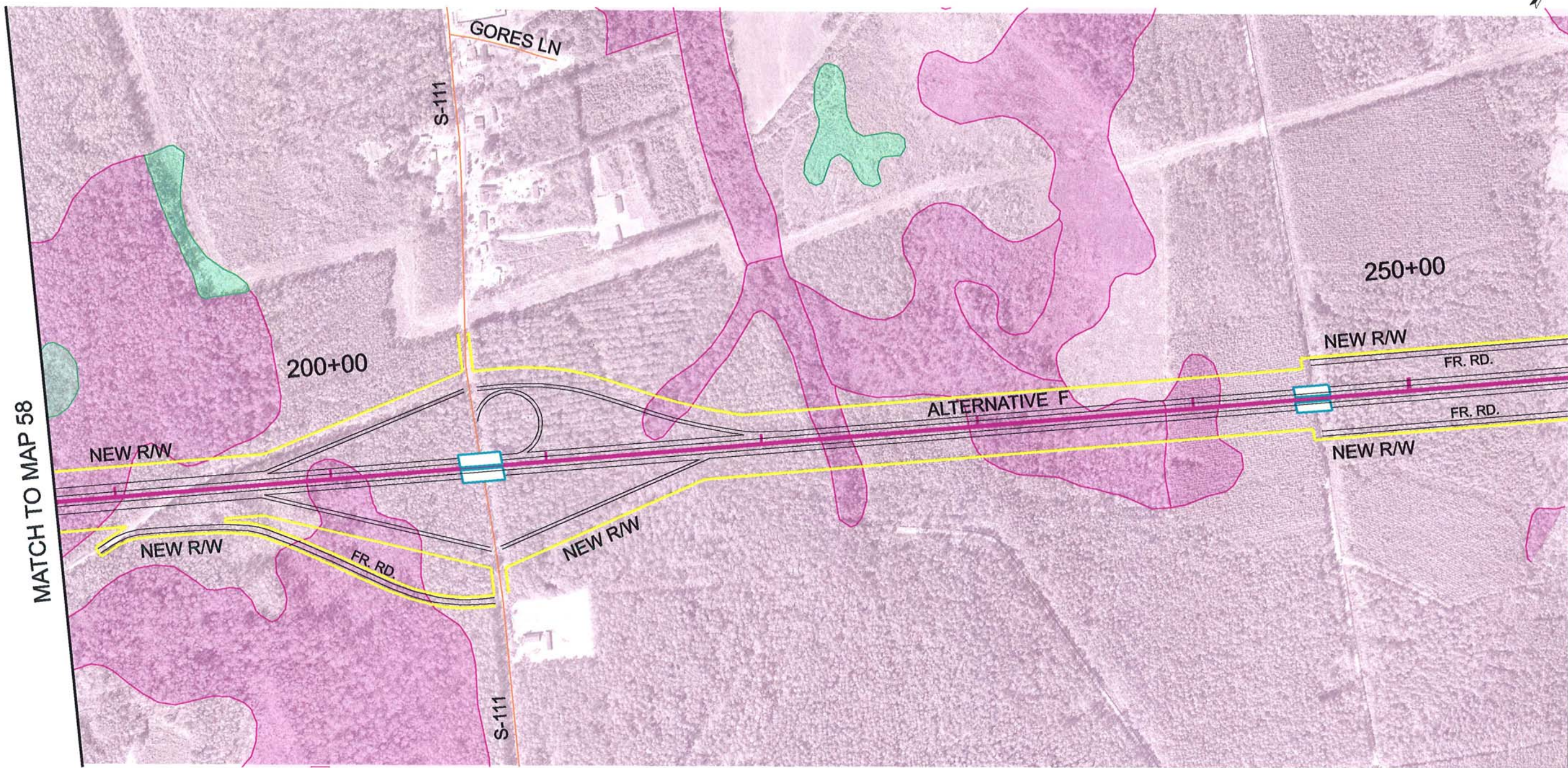


**CAROLINA BAYS PARKWAY EXTENSION**  
 HORRY COUNTY, SOUTH CAROLINA  
 CORRIDOR MAPS



ALTERNATIVE F





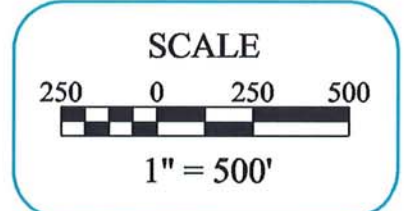
LEGEND			
	SC HIGH QUALITY WETLANDS		NC EXCEPTIONAL WETLANDS
	SC WETLANDS		100 YEAR FLOODPLAIN
	NC BENEFICIAL WETLANDS		PROPOSED BRIDGE
	NC SUBSTANTIAL WETLANDS		PROPOSED CENTERLINE
	NEW RIGHT-OF-WAY		THREATENED AND ENDANGERED SPECIES
	RECREATIONAL AREAS		CULTURAL RESOURCES
	CHURCH / CEMETERY		POTENTIAL HAZARDOUS MATERIALS
	PUBLIC SCHOOLS		

MAPS PREPARED DECEMBER, 2005  
 S.C. PHOTOGRAPHY DATE 2001  
 N.C. PHOTOGRAPHY DATE 2003

MAP  
59



**CAROLINA BAYS PARKWAY EXTENSION**  
 HORRY COUNTY, SOUTH CAROLINA  
**CORRIDOR MAPS**



ALTERNATIVE F





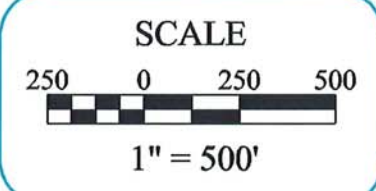
LEGEND			
	SC HIGH QUALITY WETLANDS		NC EXCEPTIONAL WETLANDS
	SC WETLANDS		100 YEAR FLOODPLAIN
	NC BENEFICIAL WETLANDS		PROPOSED BRIDGE
	NC SUBSTANTIAL WETLANDS		PROPOSED CENTERLINE
	NEW RIGHT-OF-WAY		THREATENED AND ENDANGERED SPECIES
	RECREATIONAL AREAS		CULTURAL RESOURCES
	CHURCH / CEMETERY		POTENTIAL HAZARDOUS MATERIALS
	PUBLIC SCHOOLS		

MAPS PREPARED DECEMBER, 2005  
 S.C. PHOTOGRAPHY DATE 2001  
 N.C. PHOTOGRAPHY DATE 2003

MAP  
60

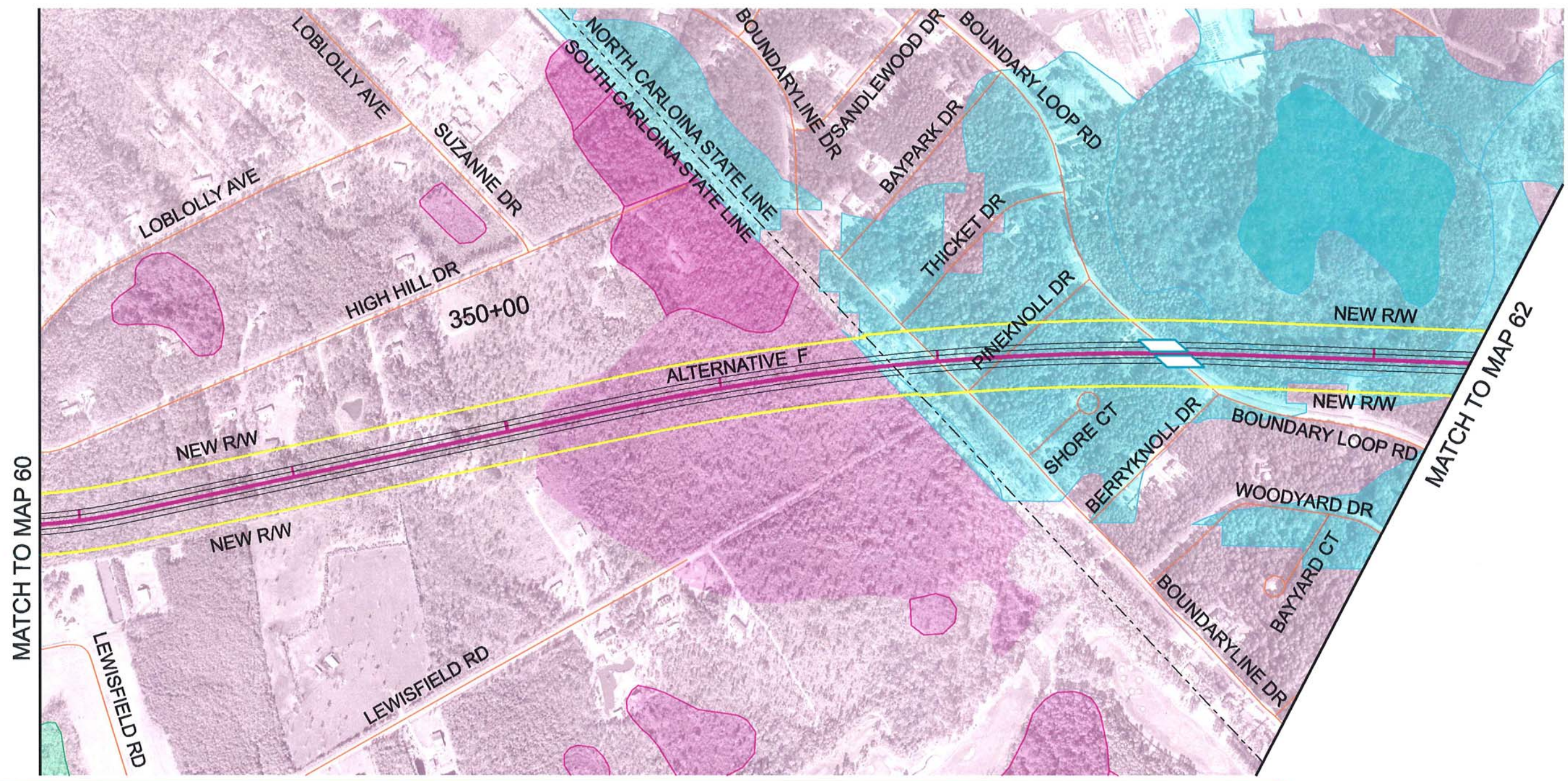


**CAROLINA BAYS PARKWAY EXTENSION**  
 HORRY COUNTY, SOUTH CAROLINA  
**CORRIDOR MAPS**



ALTERNATIVE F





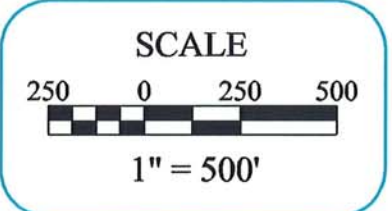
LEGEND			
	SC HIGH QUALITY WETLANDS		100 YEAR FLOODPLAIN
	SC WETLANDS		PROPOSED BRIDGE
	NC BENEFICIAL WETLANDS		PROPOSED CENTERLINE
	NC SUBSTANTIAL WETLANDS		THREATENED AND ENDANGERED SPECIES
	NEW RIGHT-OF-WAY		CULTURAL RESOURCES
	RECREATIONAL AREAS		POTENTIAL HAZARDOUS MATERIALS
	CHURCH / CEMETERY		
	PUBLIC SCHOOLS		

MAPS PREPARED DECEMBER, 2005  
 S.C. PHOTOGRAPHY DATE 2001  
 N.C. PHOTOGRAPHY DATE 2003

MAP  
61



**CAROLINA BAYS PARKWAY EXTENSION**  
 Horry County, South Carolina  
 Brunswick County, North Carolina  
**CORRIDOR MAPS**

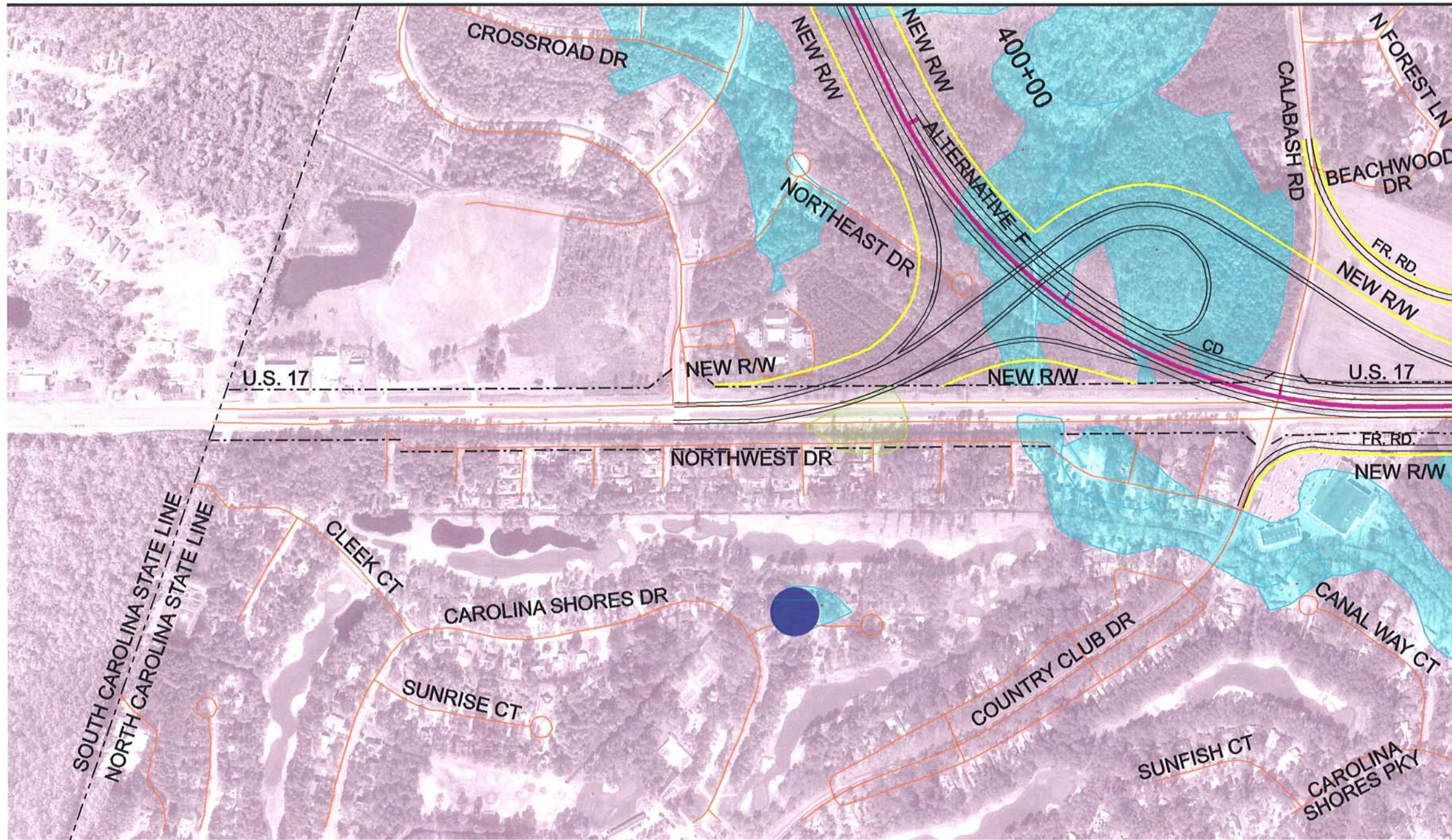


ALTERNATIVE F





MATCH TO MAP 61



LEGEND			
	SC HIGH QUALITY WETLANDS		NC EXCEPTIONAL WETLANDS
	SC WETLANDS		100 YEAR FLOODPLAIN
	NC BENEFICIAL WETLANDS		PROPOSED BRIDGE
	NC SUBSTANTIAL WETLANDS		PROPOSED CENTERLINE
	NEW RIGHT-OF-WAY		THREATENED AND ENDANGERED SPECIES
	RECREATIONAL AREAS		CULTURAL RESOURCES
	CHURCH / CEMETERY		POTENTIAL HAZARDOUS MATERIALS
	PUBLIC SCHOOLS		

MAPS PREPARED DECEMBER, 2005  
 S.C. PHOTOGRAPHY DATE 2001  
 N.C. PHOTOGRAPHY DATE 2003

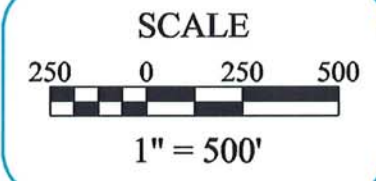
MAP  
62



## CAROLINA BAYS PARKWAY EXTENSION

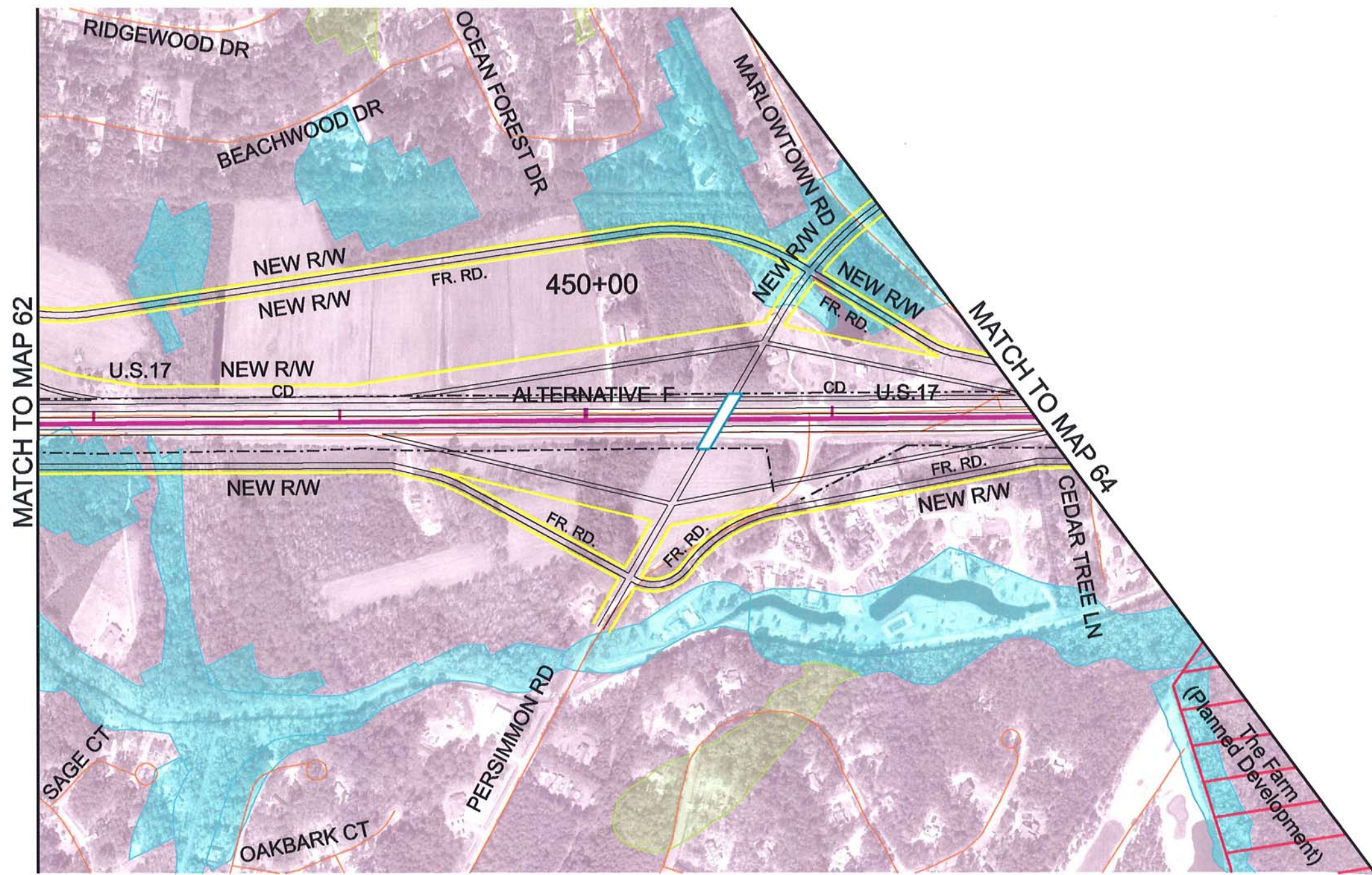
BRUNSWICK COUNTY, NORTH CAROLINA

### CORRIDOR MAPS



ALTERNATIVE F





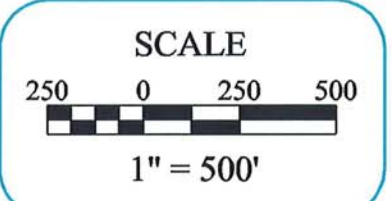
LEGEND			
	SC HIGH QUALITY WETLANDS		NC EXCEPTIONAL WETLANDS
	SC WETLANDS		100 YEAR FLOODPLAIN
	NC BENEFICIAL WETLANDS		PROPOSED BRIDGE
	NC SUBSTANTIAL WETLANDS		PROPOSED CENTERLINE
	NEW RIGHT-OF-WAY		THREATENED AND ENDANGERED SPECIES
	RECREATIONAL AREAS		CULTURAL RESOURCES
	CHURCH / CEMETERY		POTENTIAL HAZARDOUS MATERIALS
	PUBLIC SCHOOLS		

MAPS PREPARED DECEMBER, 2005  
 S.C. PHOTOGRAPHY DATE 2001  
 N.C. PHOTOGRAPHY DATE 2003

MAP  
63



**CAROLINA BAYS PARKWAY EXTENSION**  
 BRUNSWICK COUNTY, NORTH CAROLINA  
**CORRIDOR MAPS**

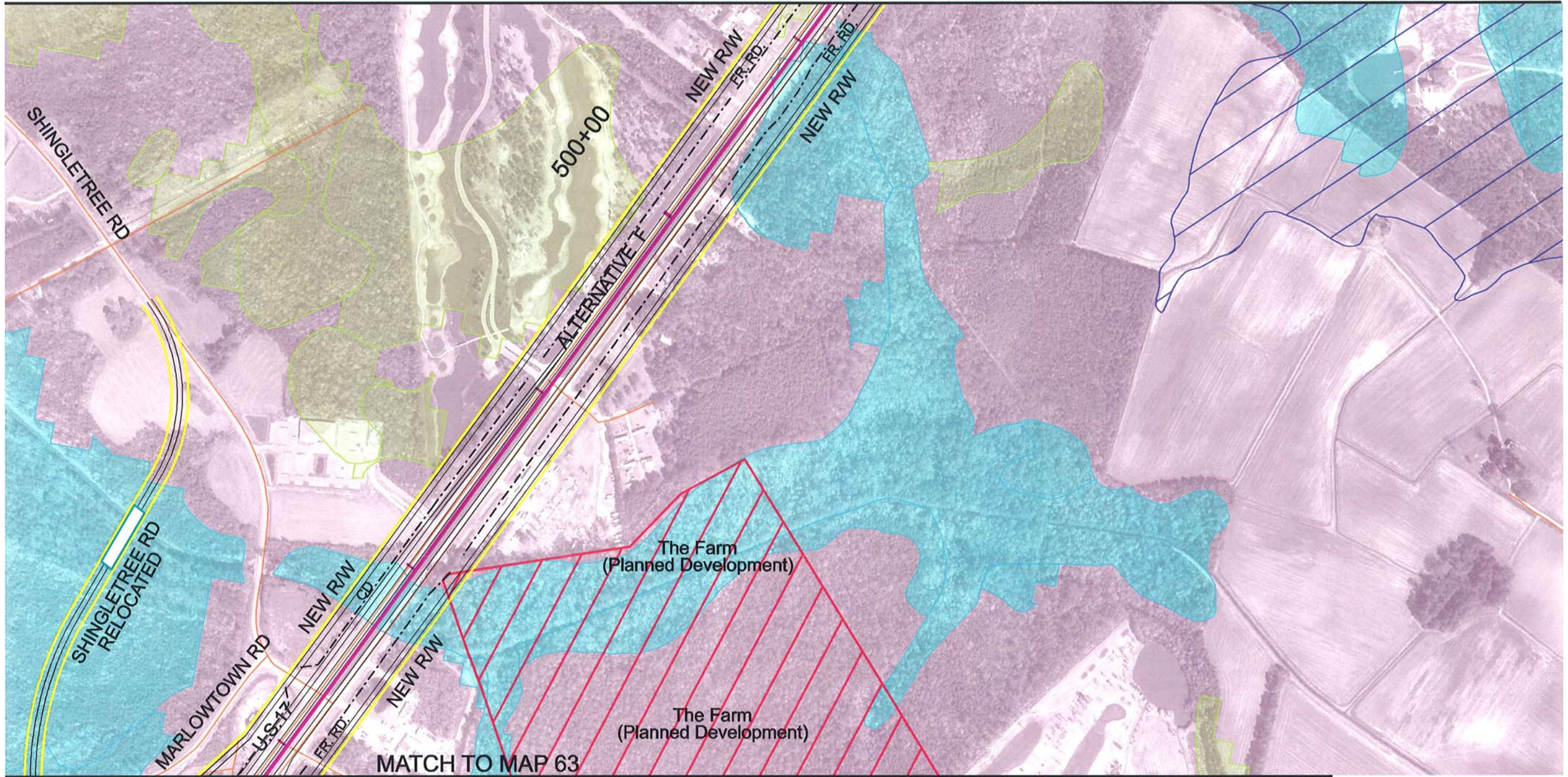


ALTERNATIVE F





MATCH TO MAP 65



**LEGEND**

- |                          |                         |                                   |                    |
|--------------------------|-------------------------|-----------------------------------|--------------------|
| SC HIGH QUALITY WETLANDS | NC EXCEPTIONAL WETLANDS | NEW RIGHT-OF-WAY                  | RECREATIONAL AREAS |
| SC WETLANDS              | 100 YEAR FLOODPLAIN     | THREATENED AND ENDANGERED SPECIES | CHURCH / CEMETERY  |
| NC BENEFICIAL WETLANDS   | PROPOSED BRIDGE         | CULTURAL RESOURCES                | PUBLIC SCHOOLS     |
| NC SUBSTANTIAL WETLANDS  | PROPOSED CENTERLINE     | POTENTIAL HAZARDOUS MATERIALS     |                    |

MAPS PREPARED DECEMBER, 2005  
S.C. PHOTOGRAPHY DATE 2001  
N.C. PHOTOGRAPHY DATE 2003

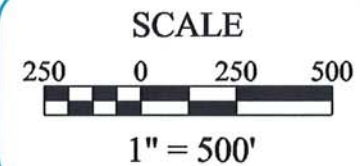
MAP  
64



**CAROLINA BAYS PARKWAY EXTENSION**

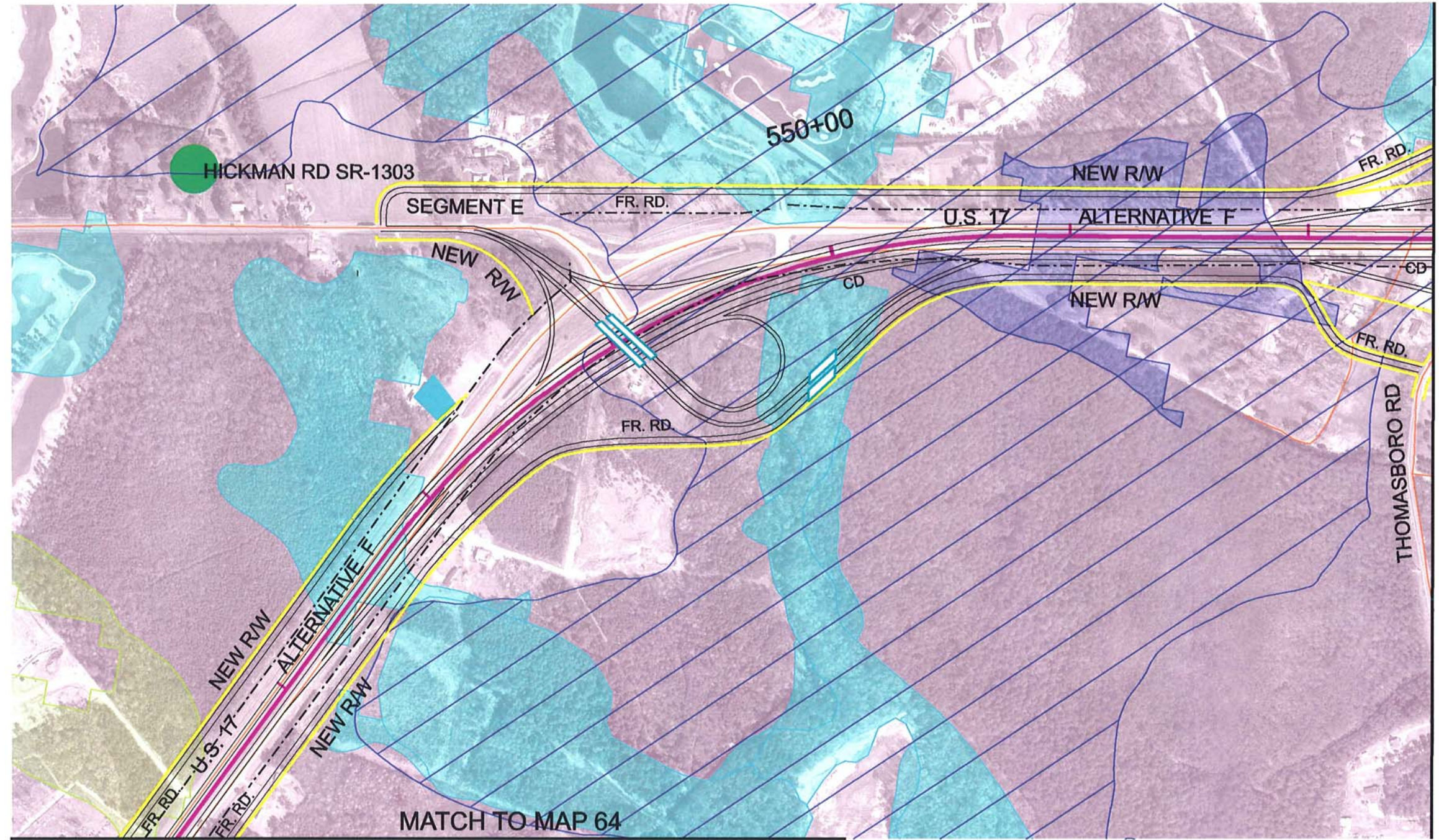
BRUNSWICK COUNTY, NORTH CAROLINA

**CORRIDOR MAPS**



ALTERNATIVE F





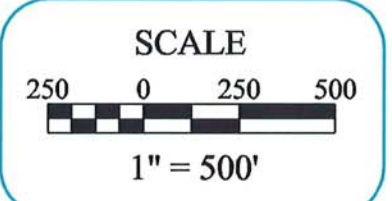
LEGEND			
	SC HIGH QUALITY WETLANDS		NC EXCEPTIONAL WETLANDS
	SC WETLANDS		100 YEAR FLOODPLAIN
	NC BENEFICIAL WETLANDS		PROPOSED BRIDGE
	NC SUBSTANTIAL WETLANDS		PROPOSED CENTERLINE
			NEW RIGHT-OF-WAY
			THREATENED AND ENDANGERED SPECIES
			CULTURAL RESOURCES
			POTENTIAL HAZARDOUS MATERIALS
			RECREATIONAL AREAS
			CHURCH / CEMETERY
			PUBLIC SCHOOLS

MAPS PREPARED DECEMBER, 2005  
 S.C. PHOTOGRAPHY DATE 2001  
 N.C. PHOTOGRAPHY DATE 2003

MAP  
65

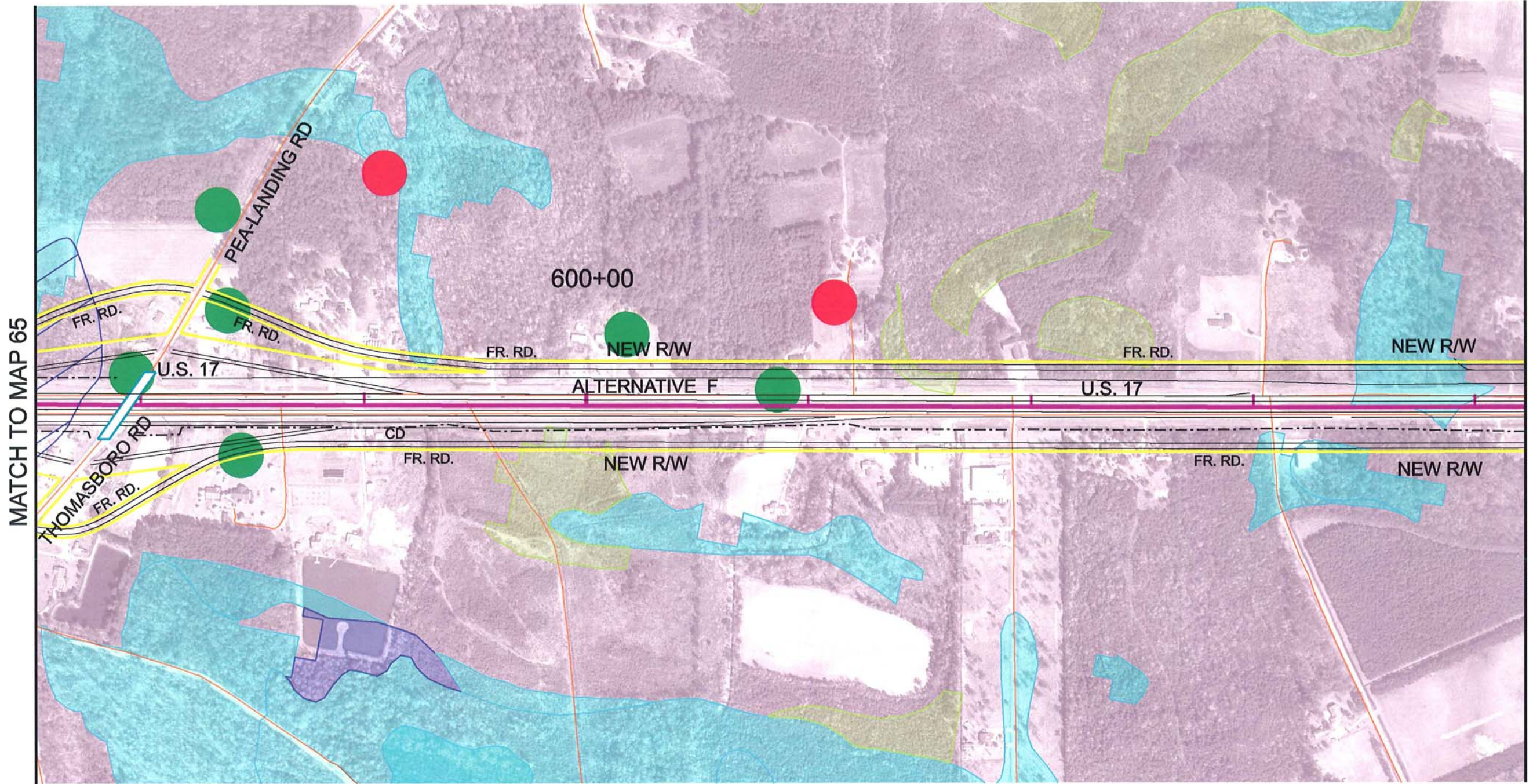


**CAROLINA BAYS PARKWAY EXTENSION**  
 BRUNSWICK COUNTY, NORTH CAROLINA  
 CORRIDOR MAPS



ALTERNATIVE F





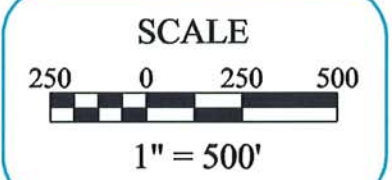
LEGEND			
	SC HIGH QUALITY WETLANDS		NC EXCEPTIONAL WETLANDS
	SC WETLANDS		100 YEAR FLOODPLAIN
	NC BENEFICIAL WETLANDS		PROPOSED BRIDGE
	NC SUBSTANTIAL WETLANDS		PROPOSED CENTERLINE
			NEW RIGHT-OF-WAY
			THREATENED AND ENDANGERED SPECIES
			CULTURAL RESOURCES
			POTENTIAL HAZARDOUS MATERIALS
			RECREATIONAL AREAS
			CHURCH / CEMETERY
			PUBLIC SCHOOLS

MAPS PREPARED DECEMBER, 2005  
 S.C. PHOTOGRAPHY DATE 2001  
 N.C. PHOTOGRAPHY DATE 2003

MAP  
66

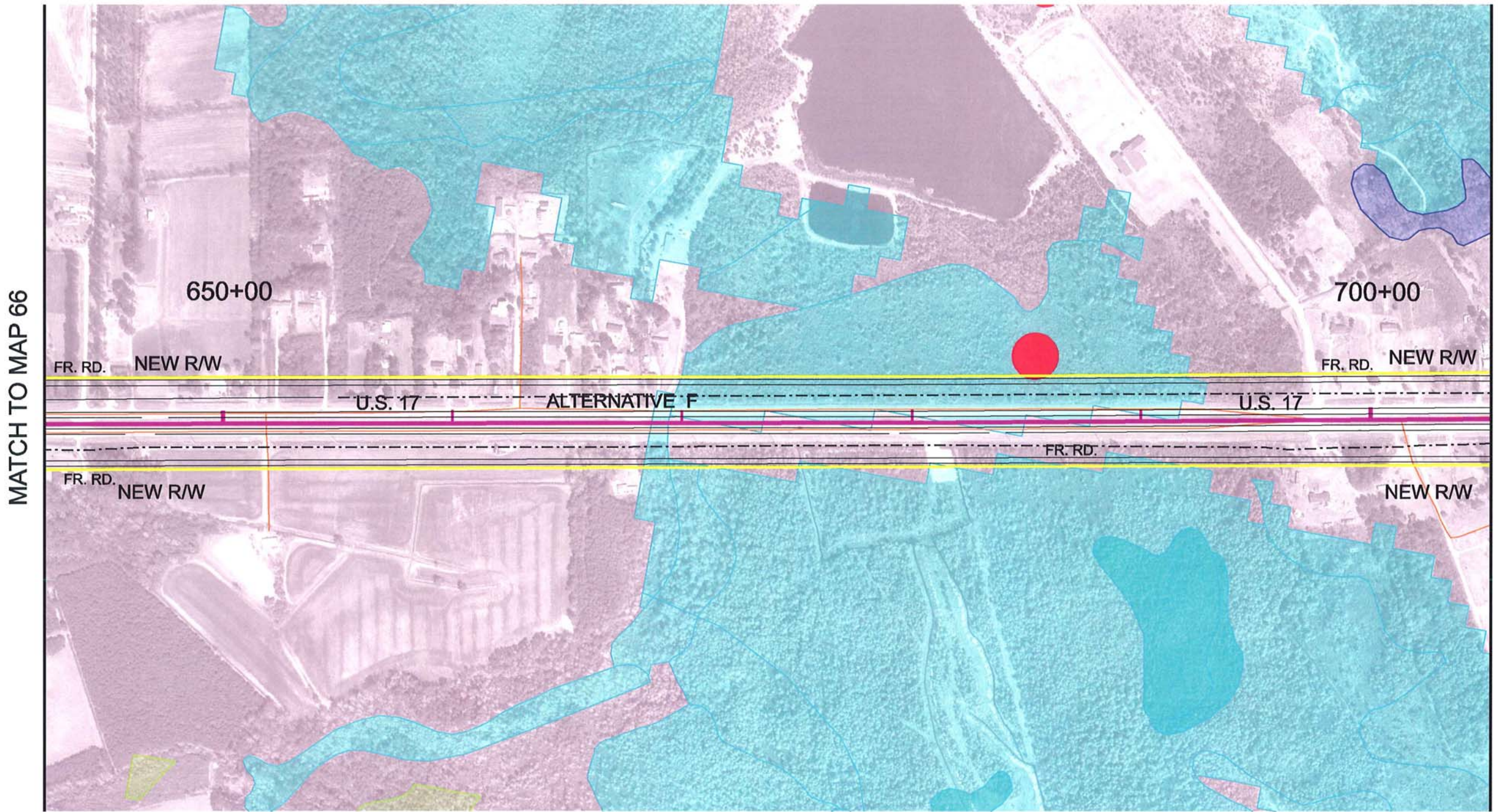


**CAROLINA BAYS PARKWAY EXTENSION**  
 BRUNSWICK COUNTY, NORTH CAROLINA  
 CORRIDOR MAPS



ALTERNATIVE F





**LEGEND**

- |  |  |   |  |
|--|--|---|--|
|  SC HIGH QUALITY WETLANDS |  NC EXCEPTIONAL WETLANDS |  NEW RIGHT-OF-WAY                  |  RECREATIONAL AREAS |
|  SC WETLANDS              |  100 YEAR FLOODPLAIN     |  THREATENED AND ENDANGERED SPECIES |  CHURCH / CEMETERY  |
|  NC BENEFICIAL WETLANDS   |  PROPOSED BRIDGE         |  CULTURAL RESOURCES                |  PUBLIC SCHOOLS     |
|  NC SUBSTANTIAL WETLANDS  |  PROPOSED CENTERLINE     |  POTENTIAL HAZARDOUS MATERIALS     |  |

MAPS PREPARED DECEMBER, 2005  
 S.C. PHOTOGRAPHY DATE 2001  
 N.C. PHOTOGRAPHY DATE 2003

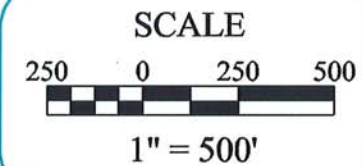
MAP  
67



**CAROLINA BAYS PARKWAY EXTENSION**

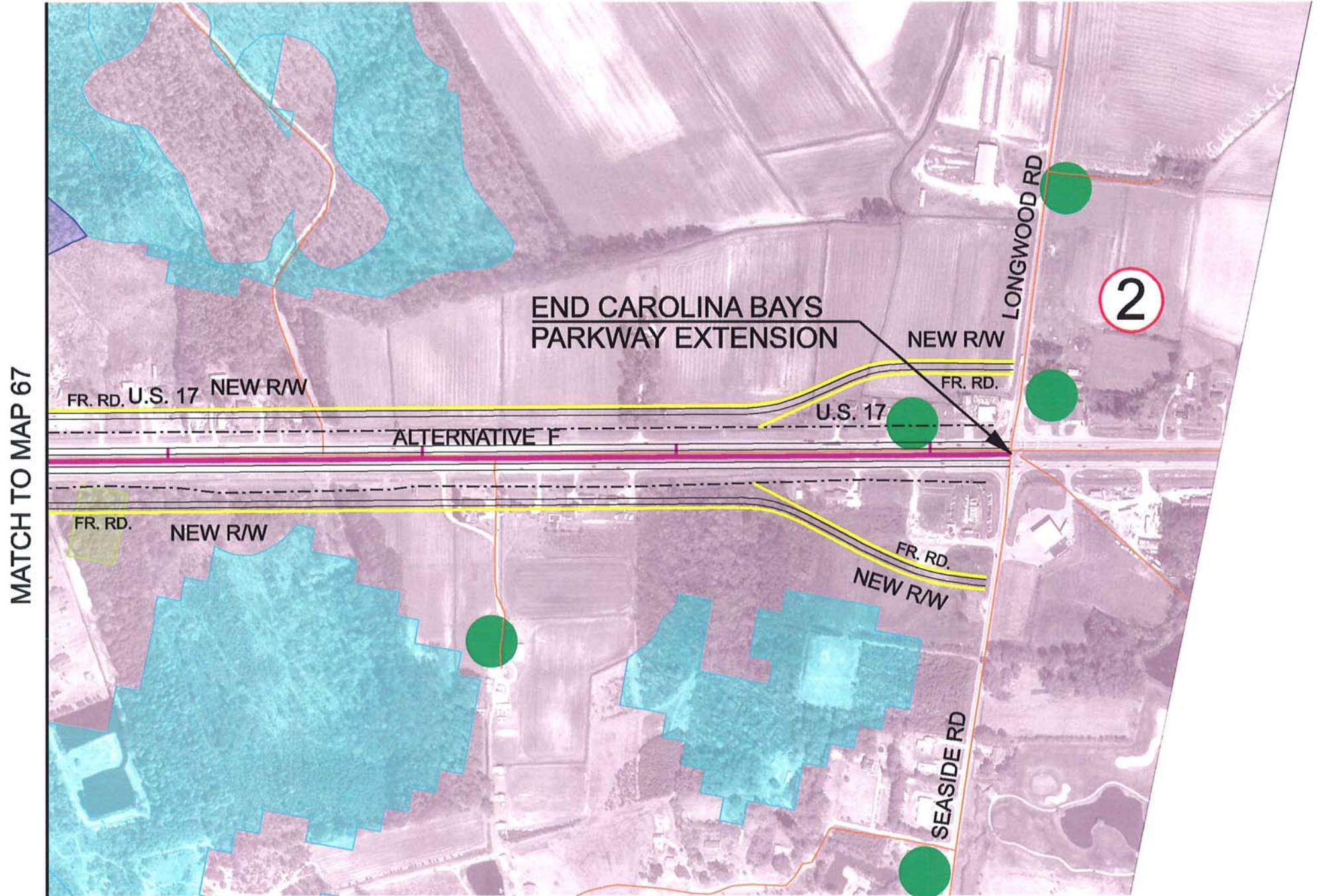
BRUNSWICK COUNTY, NORTH CAROLINA

**CORRIDOR MAPS**



ALTERNATIVE F





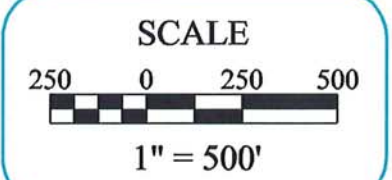
LEGEND	
	SC HIGH QUALITY WETLANDS
	SC WETLANDS
	NC BENEFICIAL WETLANDS
	NC SUBSTANTIAL WETLANDS
	NC EXCEPTIONAL WETLANDS
	100 YEAR FLOODPLAIN
	PROPOSED BRIDGE
	PROPOSED CENTERLINE
	NEW RIGHT-OF-WAY
	THREATENED AND ENDANGERED SPECIES
	CULTURAL RESOURCES
	POTENTIAL HAZARDOUS MATERIALS
	RECREATIONAL AREAS
	CHURCH / CEMETERY
	PUBLIC SCHOOLS

MAPS PREPARED DECEMBER, 2005  
 S.C. PHOTOGRAPHY DATE 2001  
 N.C. PHOTOGRAPHY DATE 2003

MAP  
68



**CAROLINA BAYS PARKWAY EXTENSION**  
 BRUNSWICK COUNTY, NORTH CAROLINA  
 CORRIDOR MAPS



ALTERNATIVE F