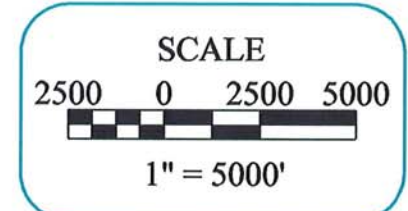


SHEET PREPARED DECEMBER, 2005

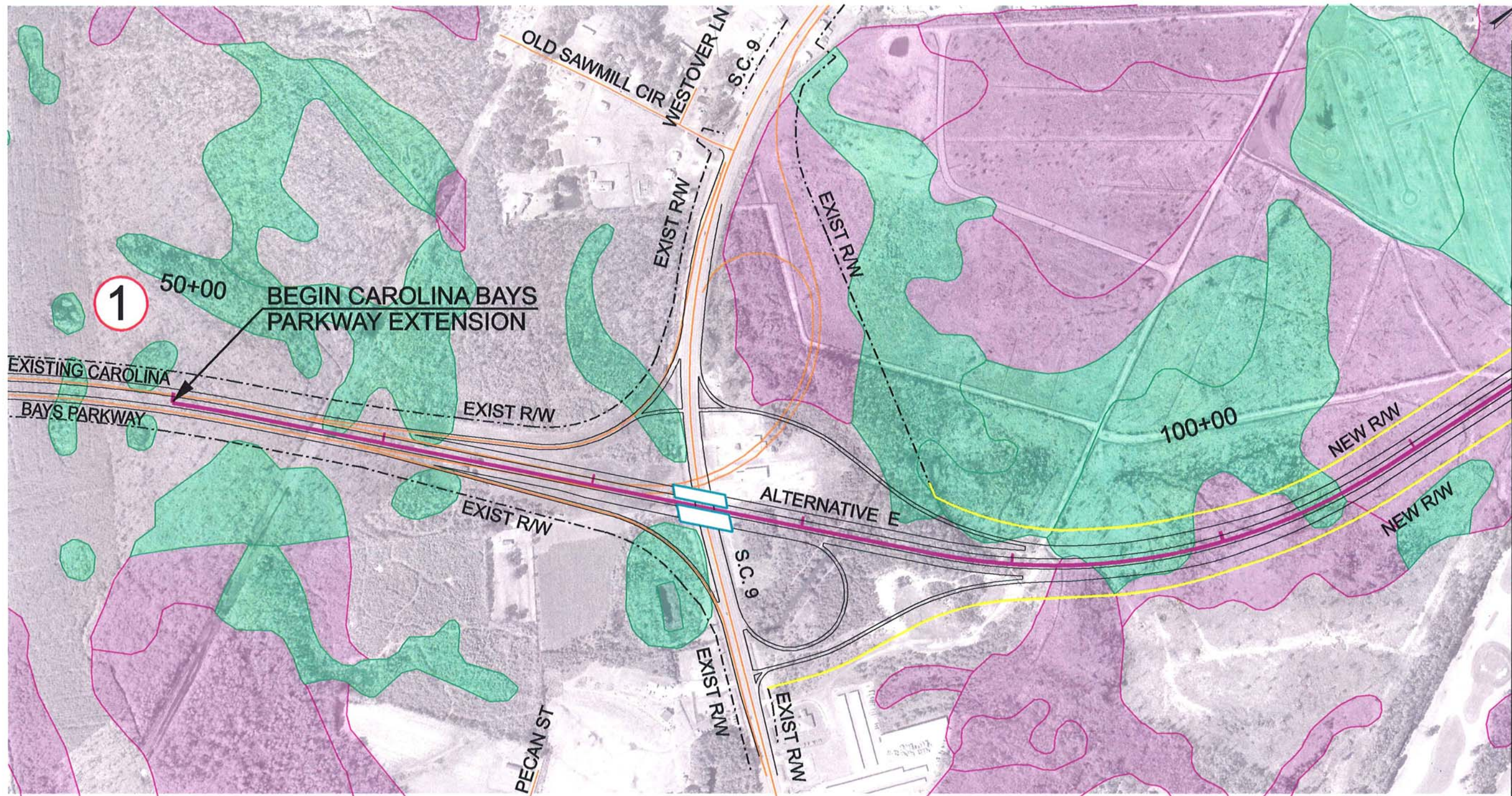
SHEET  
13



**CAROLINA BAYS PARKWAY EXTENSION**  
 HORRY COUNTY, SOUTH CAROLINA  
 BRUNSWICK COUNTY, NORTH CAROLINA  
**CORRIDOR MAPS**



**SHEET LAYOUT**  
 ALTERNATIVE E



MATCH TO MAP 47

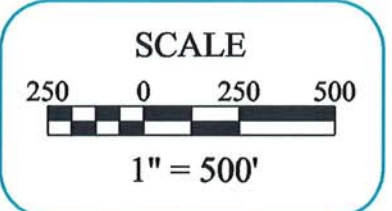
| LEGEND |                          |  |                                   |
|--------|--------------------------|--|-----------------------------------|
|        | SC HIGH QUALITY WETLANDS |  | NC EXCEPTIONAL WETLANDS           |
|        | SC WETLANDS              |  | 100 YEAR FLOODPLAIN               |
|        | NC BENEFICIAL WETLANDS   |  | PROPOSED BRIDGE                   |
|        | NC SUBSTANTIAL WETLANDS  |  | PROPOSED CENTERLINE               |
|        | NEW RIGHT-OF-WAY         |  | THREATENED AND ENDANGERED SPECIES |
|        | RECREATIONAL AREAS       |  | CULTURAL RESOURCES                |
|        | CHURCH / CEMETERY        |  | POTENTIAL HAZARDOUS MATERIALS     |

MAPS PREPARED DECEMBER, 2005  
 S.C. PHOTOGRAPHY DATE 2001  
 N.C. PHOTOGRAPHY DATE 2003

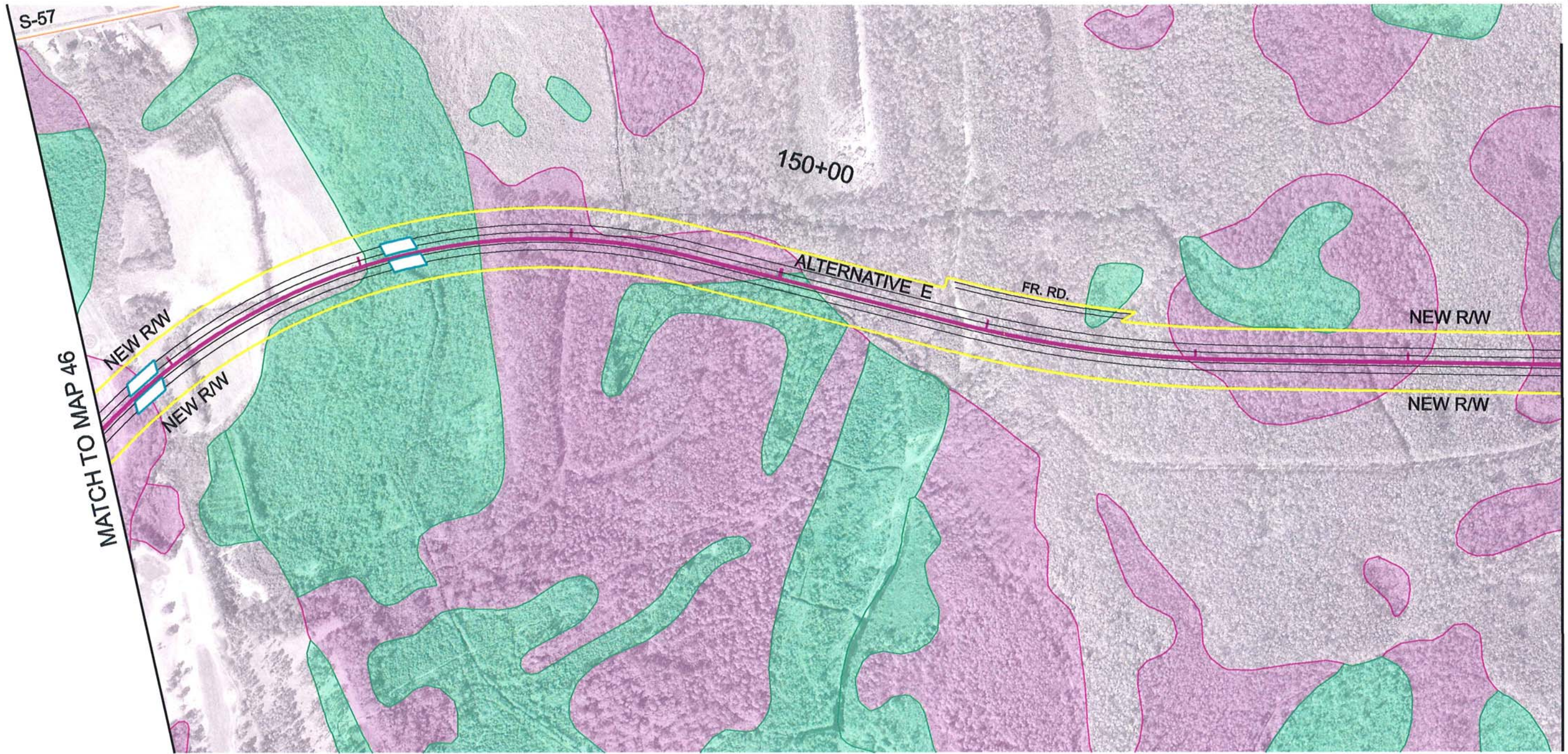
MAP  
46



**CAROLINA BAYS PARKWAY EXTENSION**  
 HORRY COUNTY, SOUTH CAROLINA  
 CORRIDOR MAPS



ALTERNATIVE E



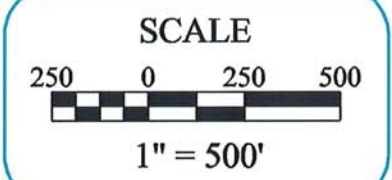
| LEGEND |                          |  |                                   |
|--------|--------------------------|--|-----------------------------------|
|        | SC HIGH QUALITY WETLANDS |  | NC EXCEPTIONAL WETLANDS           |
|        | SC WETLANDS              |  | 100 YEAR FLOODPLAIN               |
|        | NC BENEFICIAL WETLANDS   |  | PROPOSED BRIDGE                   |
|        | NC SUBSTANTIAL WETLANDS  |  | PROPOSED CENTERLINE               |
|        | NEW RIGHT-OF-WAY         |  | THREATENED AND ENDANGERED SPECIES |
|        | RECREATIONAL AREAS       |  | CULTURAL RESOURCES                |
|        | CHURCH / CEMETERY        |  | POTENTIAL HAZARDOUS MATERIALS     |

MAPS PREPARED DECEMBER, 2005  
 S.C. PHOTOGRAPHY DATE 2001  
 N.C. PHOTOGRAPHY DATE 2003

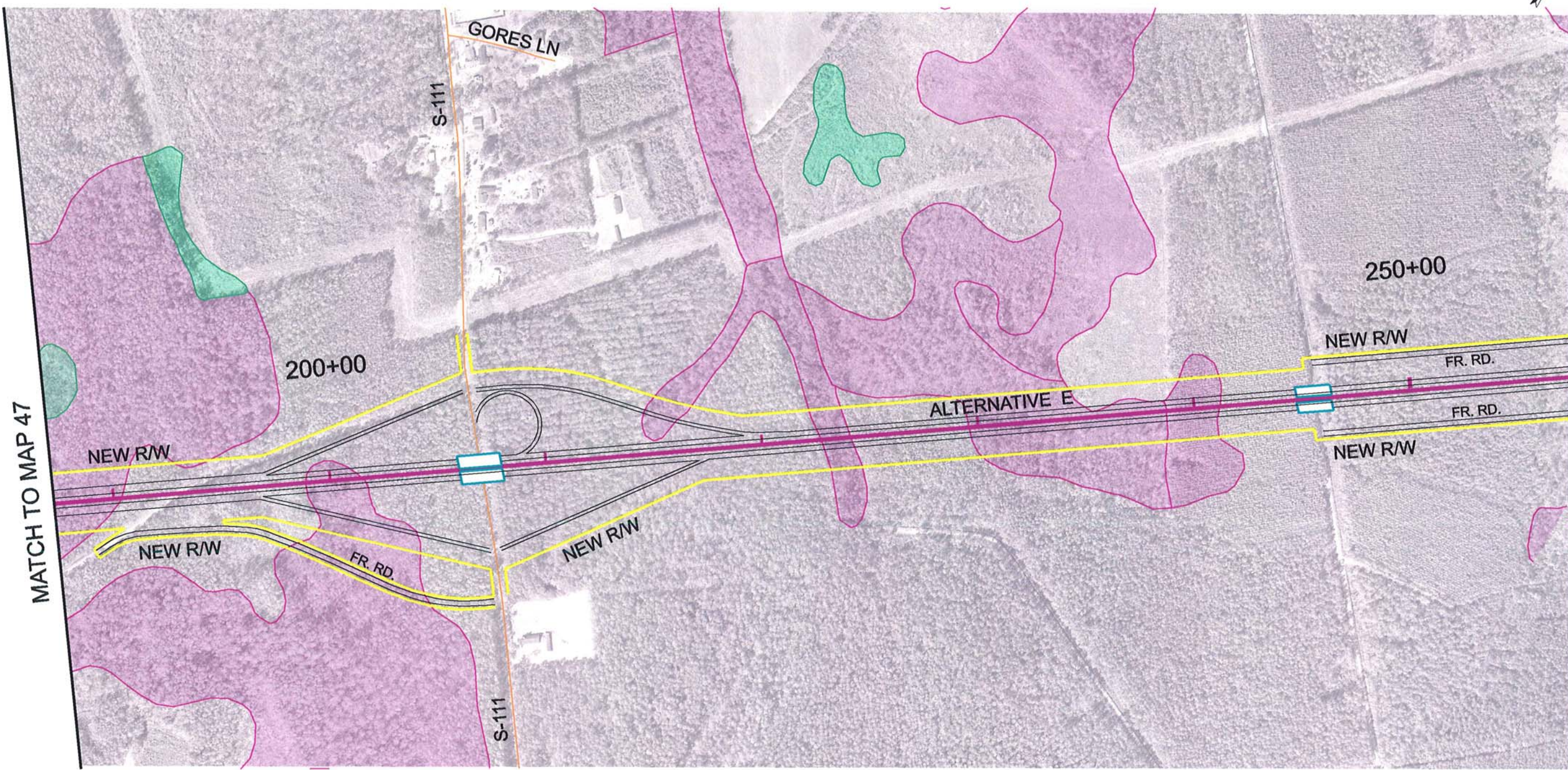
MAP  
47



**CAROLINA BAYS PARKWAY EXTENSION**  
 HORRY COUNTY, SOUTH CAROLINA  
 CORRIDOR MAPS



ALTERNATIVE E



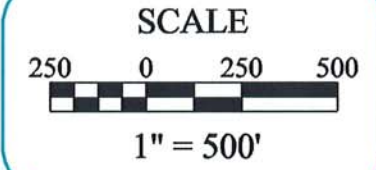
| LEGEND |                               |  |                                   |
|--------|-------------------------------|--|-----------------------------------|
|        | SC HIGH QUALITY WETLANDS      |  | NC EXCEPTIONAL WETLANDS           |
|        | SC WETLANDS                   |  | 100 YEAR FLOODPLAIN               |
|        | NC BENEFICIAL WETLANDS        |  | PROPOSED BRIDGE                   |
|        | NC SUBSTANTIAL WETLANDS       |  | PROPOSED CENTERLINE               |
|        | NEW RIGHT-OF-WAY              |  | THREATENED AND ENDANGERED SPECIES |
|        | CULTURAL RESOURCES            |  | RECREATIONAL AREAS                |
|        | POTENTIAL HAZARDOUS MATERIALS |  | CHURCH / CEMETERY                 |
|        |                               |  | PUBLIC SCHOOLS                    |

MAPS PREPARED DECEMBER, 2005  
 S.C. PHOTOGRAPHY DATE 2001  
 N.C. PHOTOGRAPHY DATE 2003

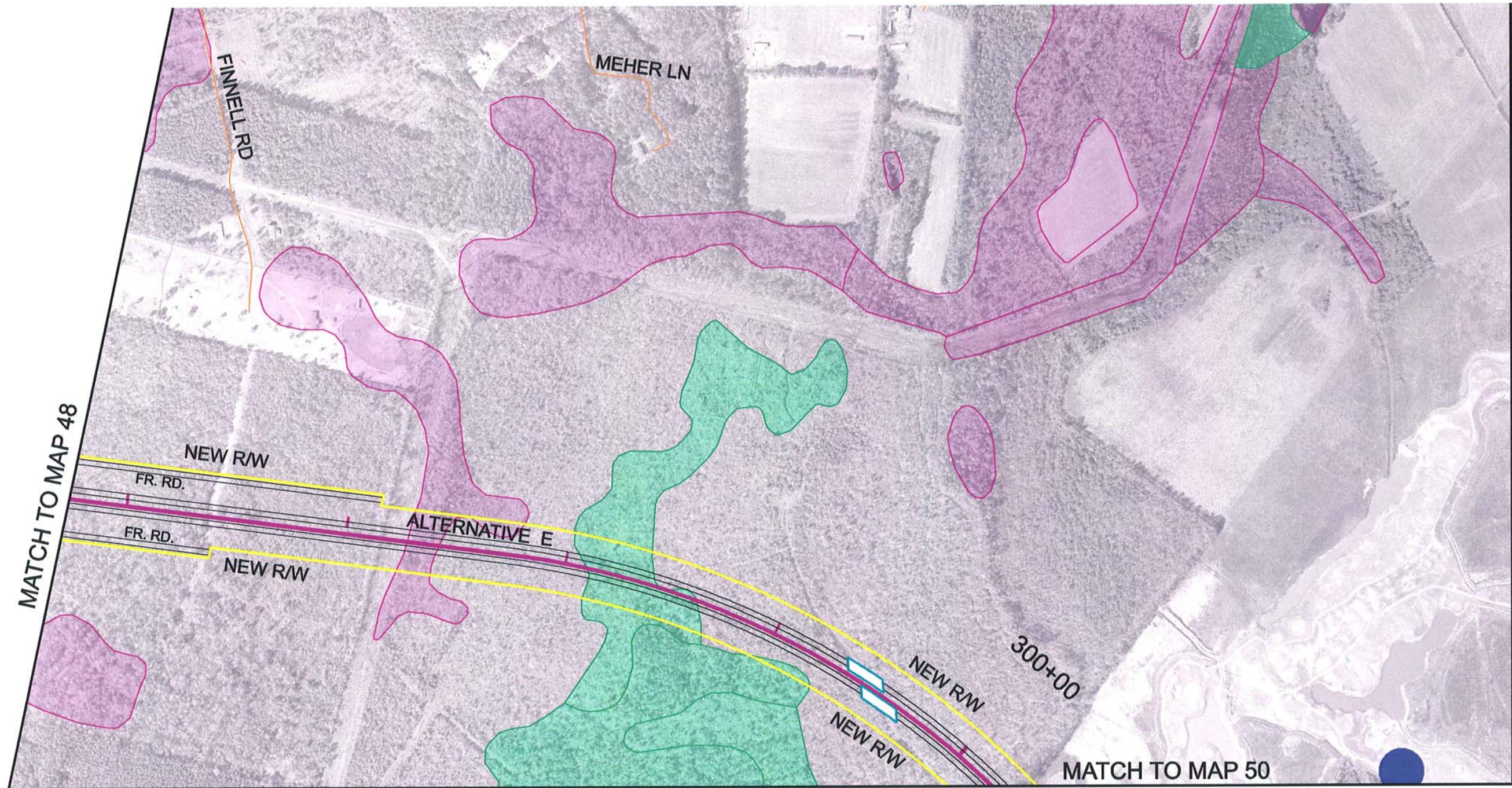
MAP  
48



**CAROLINA BAYS PARKWAY EXTENSION**  
 HORRY COUNTY, SOUTH CAROLINA  
**CORRIDOR MAPS**



ALTERNATIVE E



| LEGEND |                                   |
|--------|-----------------------------------|
|        | SC HIGH QUALITY WETLANDS          |
|        | SC WETLANDS                       |
|        | NC BENEFICIAL WETLANDS            |
|        | NC SUBSTANTIAL WETLANDS           |
|        | 100 YEAR FLOODPLAIN               |
|        | PROPOSED BRIDGE                   |
|        | PROPOSED CENTERLINE               |
|        | NEW RIGHT-OF-WAY                  |
|        | THREATENED AND ENDANGERED SPECIES |
|        | CULTURAL RESOURCES                |
|        | POTENTIAL HAZARDOUS MATERIALS     |
|        | RECREATIONAL AREAS                |
|        | CHURCH / CEMETERY                 |
|        | PUBLIC SCHOOLS                    |

MAPS PREPARED DECEMBER, 2005  
 S.C. PHOTOGRAPHY DATE 2001  
 N.C. PHOTOGRAPHY DATE 2003

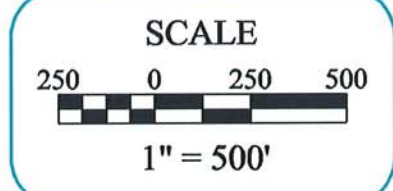
MAP  
49



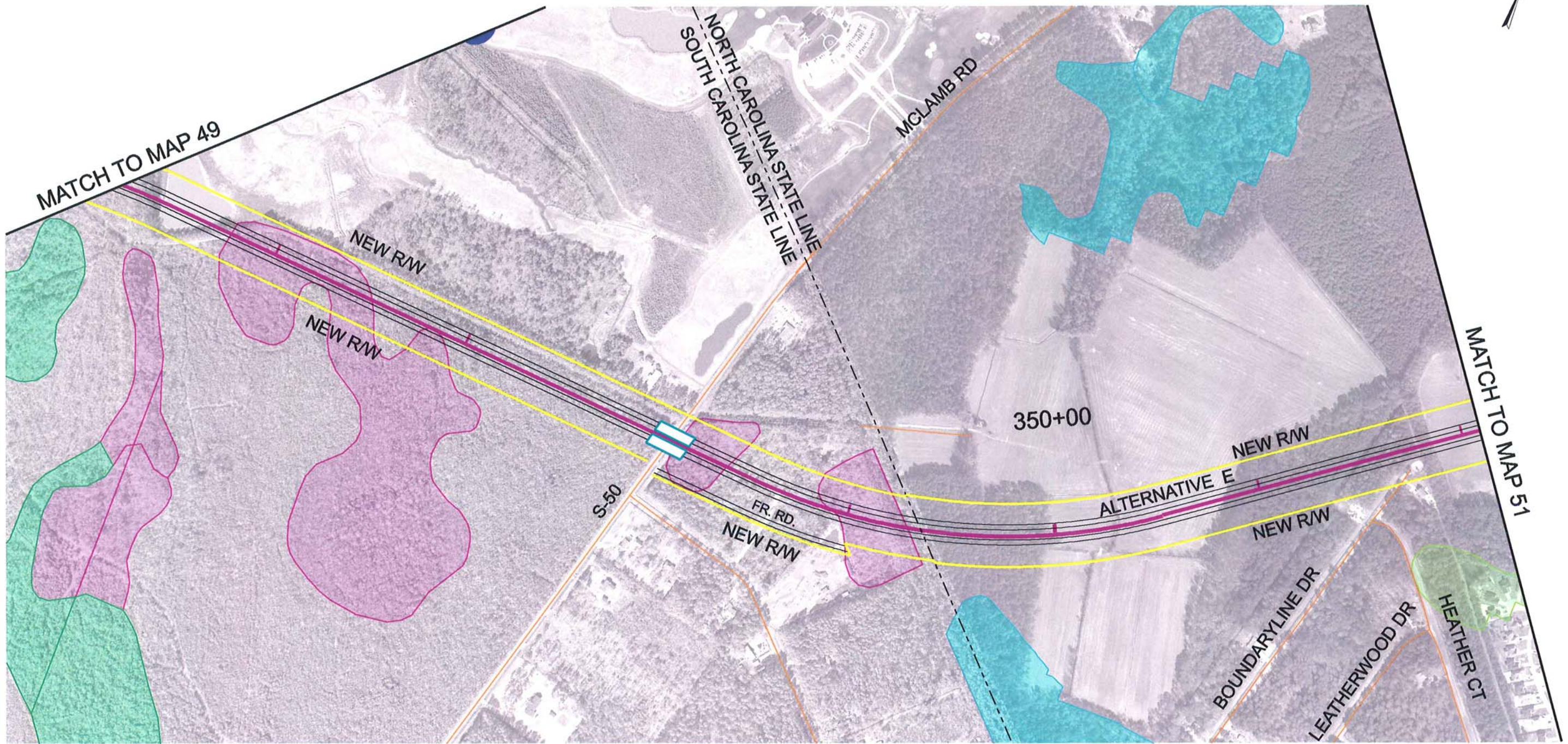
### CAROLINA BAYS PARKWAY EXTENSION

HORRY COUNTY, SOUTH CAROLINA

### CORRIDOR MAPS



ALTERNATIVE E



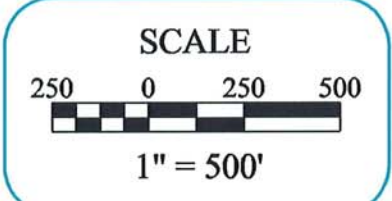
| LEGEND |                                   |
|--------|-----------------------------------|
|        | SC HIGH QUALITY WETLANDS          |
|        | SC WETLANDS                       |
|        | NC BENEFICIAL WETLANDS            |
|        | NC SUBSTANTIAL WETLANDS           |
|        | 100 YEAR FLOODPLAIN               |
|        | PROPOSED BRIDGE                   |
|        | PROPOSED CENTERLINE               |
|        | RECREATIONAL AREAS                |
|        | THREATENED AND ENDANGERED SPECIES |
|        | CULTURAL RESOURCES                |
|        | POTENTIAL HAZARDOUS MATERIALS     |
|        | CHURCH / CEMETERY                 |
|        | PUBLIC SCHOOLS                    |

MAPS PREPARED DECEMBER, 2005  
 S.C. PHOTOGRAPHY DATE 2001  
 N.C. PHOTOGRAPHY DATE 2003

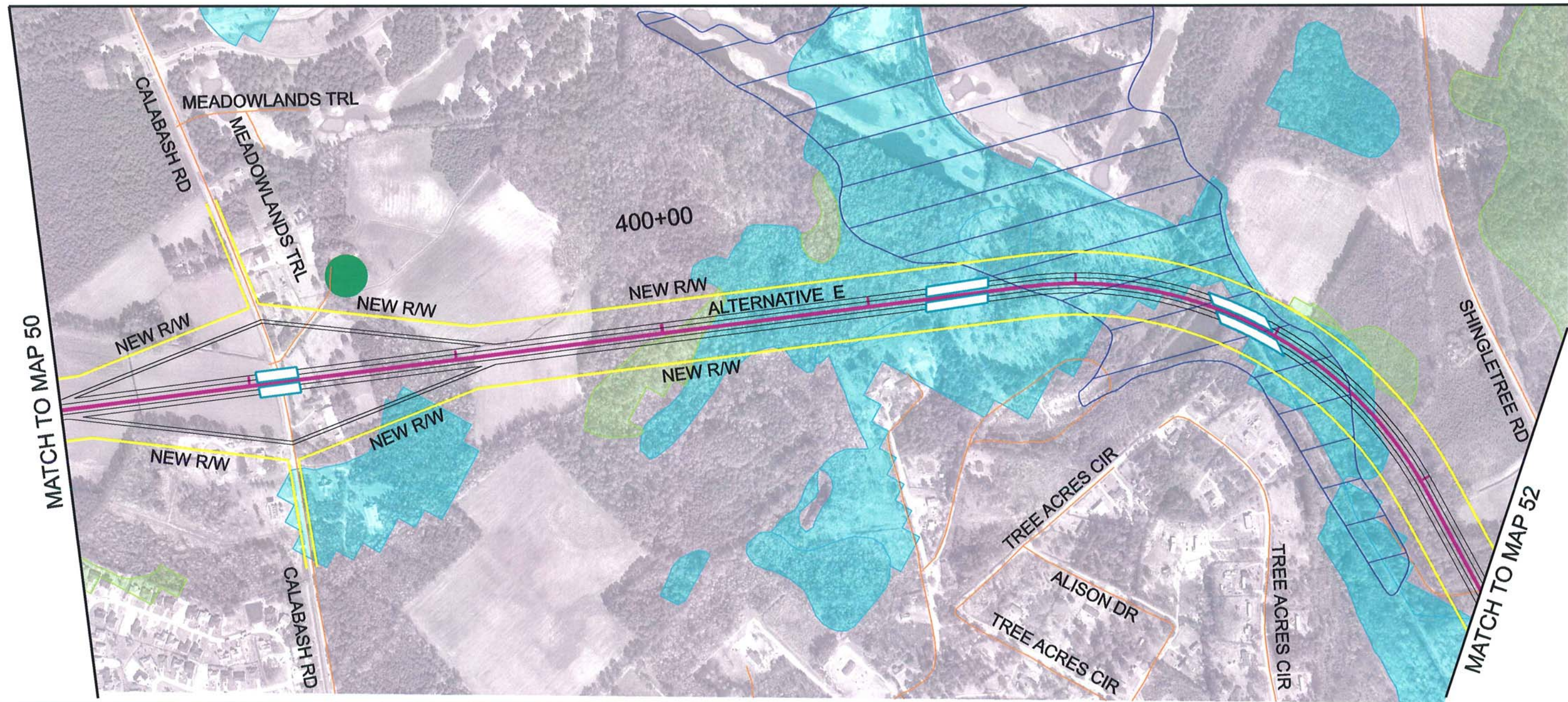
MAP  
50



**CAROLINA BAYS PARKWAY EXTENSION**  
 HORRY COUNTY, SOUTH CAROLINA  
 BRUNSWICK COUNTY, NORTH CAROLINA  
**CORRIDOR MAPS**



ALTERNATIVE E



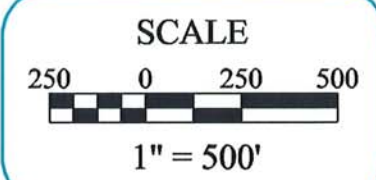
| LEGEND |                          |  |                                   |
|--------|--------------------------|--|-----------------------------------|
|        | SC HIGH QUALITY WETLANDS |  | NC EXCEPTIONAL WETLANDS           |
|        | SC WETLANDS              |  | 100 YEAR FLOODPLAIN               |
|        | NC BENEFICIAL WETLANDS   |  | PROPOSED BRIDGE                   |
|        | NC SUBSTANTIAL WETLANDS  |  | PROPOSED CENTERLINE               |
|        | NEW RIGHT-OF-WAY         |  | THREATENED AND ENDANGERED SPECIES |
|        | RECREATIONAL AREAS       |  | CULTURAL RESOURCES                |
|        | CHURCH / CEMETERY        |  | POTENTIAL HAZARDOUS MATERIALS     |
|        | PUBLIC SCHOOLS           |  |                                   |

MAPS PREPARED DECEMBER, 2005  
 S.C. PHOTOGRAPHY DATE 2001  
 N.C. PHOTOGRAPHY DATE 2003

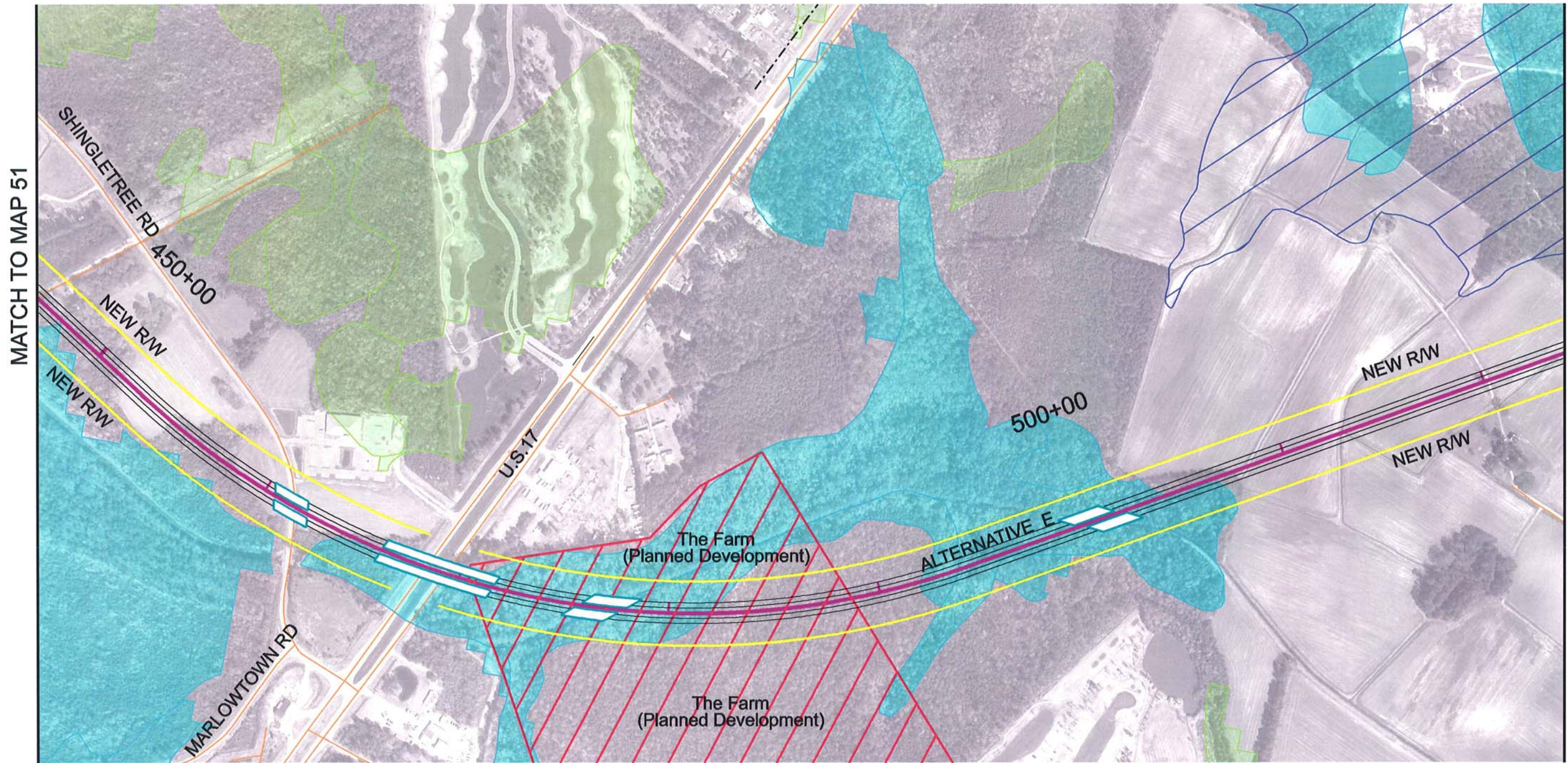
MAP  
51



**CAROLINA BAYS PARKWAY EXTENSION**  
 BRUNSWICK COUNTY, NORTH CAROLINA  
**CORRIDOR MAPS**



ALTERNATIVE E



| LEGEND |                          |  |                                   |
|--------|--------------------------|--|-----------------------------------|
|        | SC HIGH QUALITY WETLANDS |  | NC EXCEPTIONAL WETLANDS           |
|        | SC WETLANDS              |  | 100 YEAR FLOODPLAIN               |
|        | NC BENEFICIAL WETLANDS   |  | PROPOSED BRIDGE                   |
|        | NC SUBSTANTIAL WETLANDS  |  | PROPOSED CENTERLINE               |
|        | NEW RIGHT-OF-WAY         |  | THREATENED AND ENDANGERED SPECIES |
|        | RECREATIONAL AREAS       |  | CULTURAL RESOURCES                |
|        | CHURCH / CEMETERY        |  | POTENTIAL HAZARDOUS MATERIALS     |
|        | PUBLIC SCHOOLS           |  |                                   |

MAPS PREPARED DECEMBER, 2005  
 S.C. PHOTOGRAPHY DATE 2001  
 N.C. PHOTOGRAPHY DATE 2003

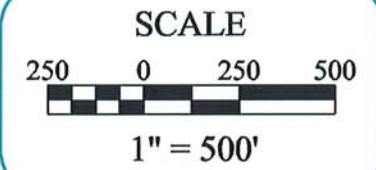
MAP  
52



## CAROLINA BAYS PARKWAY EXTENSION

BRUNSWICK COUNTY, NORTH CAROLINA

### CORRIDOR MAPS

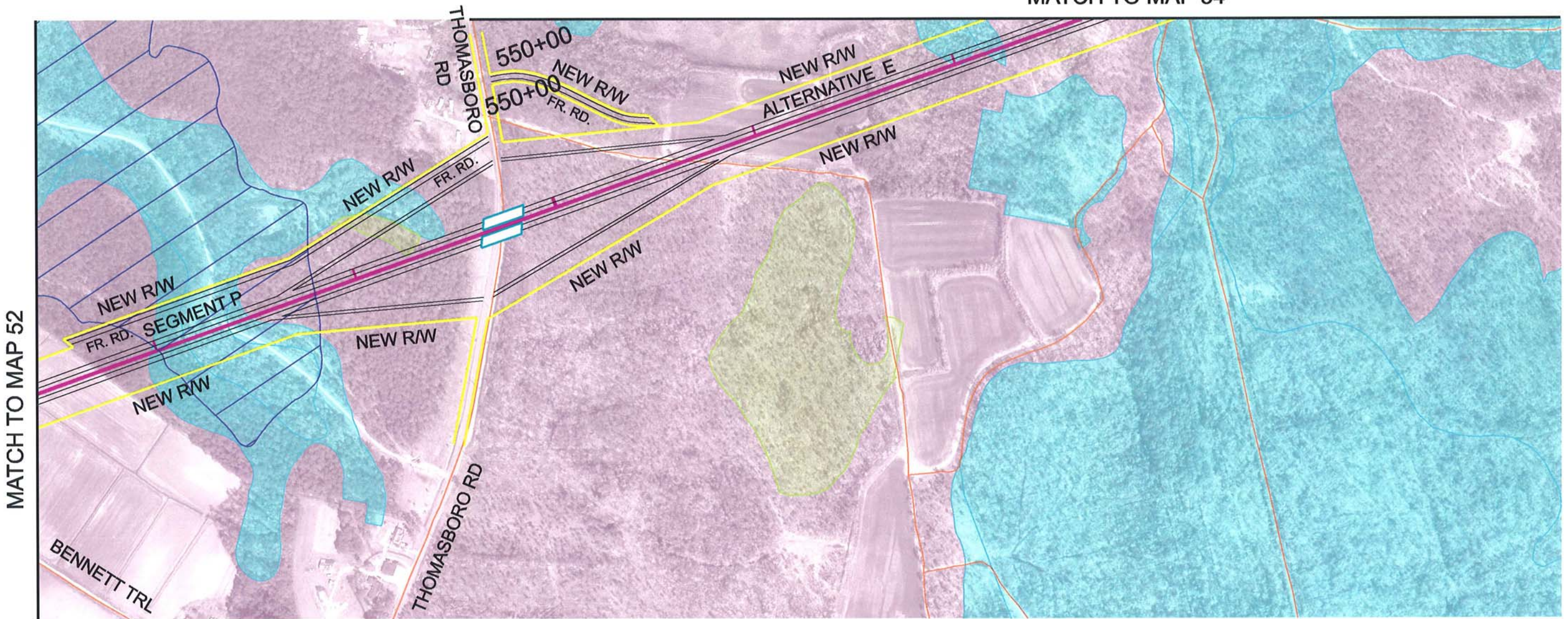


ALTERNATIVE E





MATCH TO MAP 54



MATCH TO MAP 52

| LEGEND |                                   |
|--------|-----------------------------------|
|        | SC HIGH QUALITY WETLANDS          |
|        | SC WETLANDS                       |
|        | NC BENEFICIAL WETLANDS            |
|        | NC SUBSTANTIAL WETLANDS           |
|        | NC EXCEPTIONAL WETLANDS           |
|        | 100 YEAR FLOODPLAIN               |
|        | PROPOSED BRIDGE                   |
|        | PROPOSED CENTERLINE               |
|        | NEW RIGHT-OF-WAY                  |
|        | THREATENED AND ENDANGERED SPECIES |
|        | CULTURAL RESOURCES                |
|        | POTENTIAL HAZARDOUS MATERIALS     |
|        | RECREATIONAL AREAS                |
|        | CHURCH / CEMETERY                 |
|        | PUBLIC SCHOOLS                    |

MAPS PREPARED DECEMBER, 2005  
S.C. PHOTOGRAPHY DATE 2001  
N.C. PHOTOGRAPHY DATE 2003

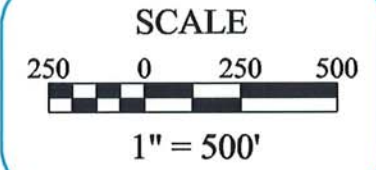
MAP  
53



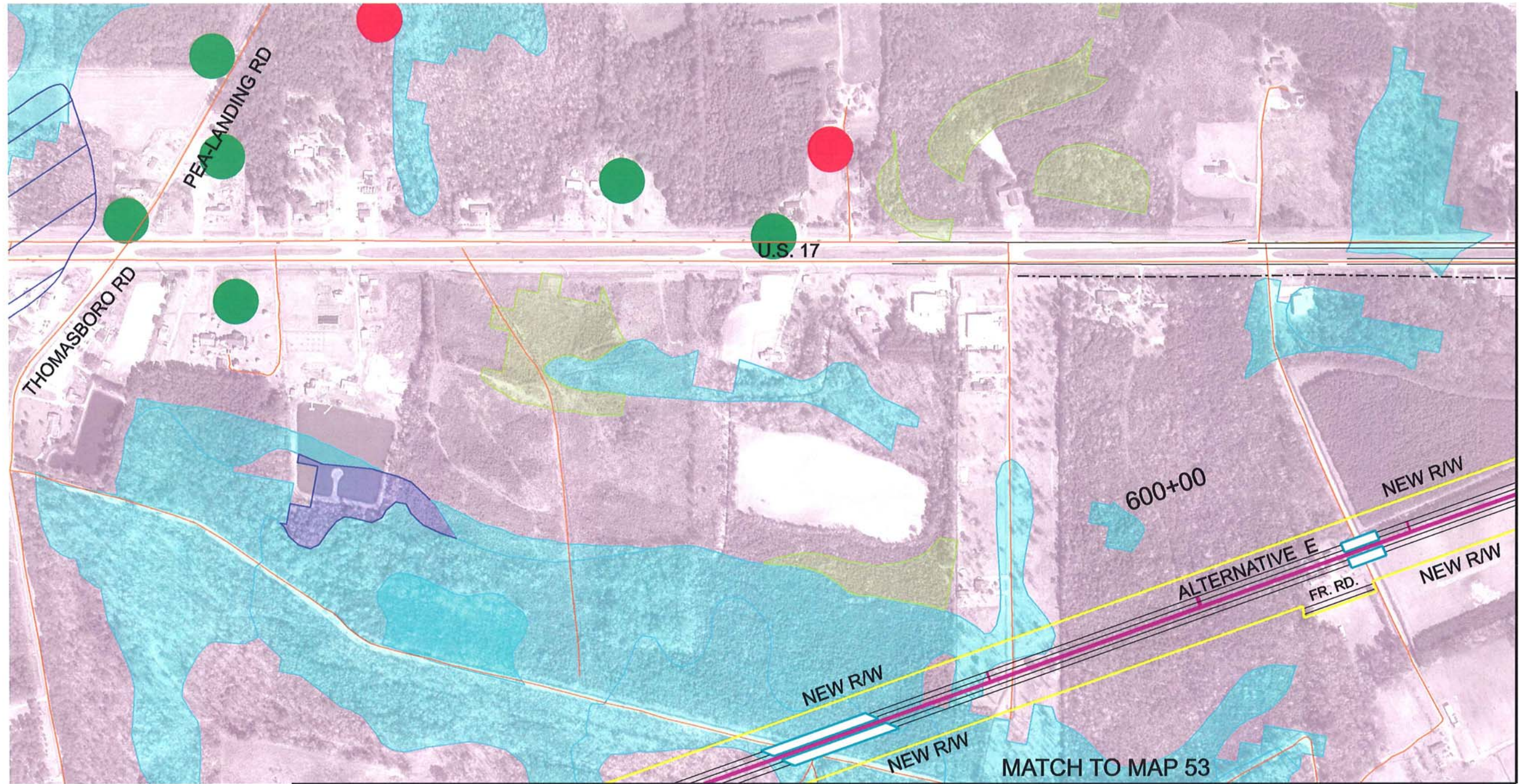
### CAROLINA BAYS PARKWAY EXTENSION

BRUNSWICK COUNTY, NORTH CAROLINA

### CORRIDOR MAPS



ALTERNATIVE E



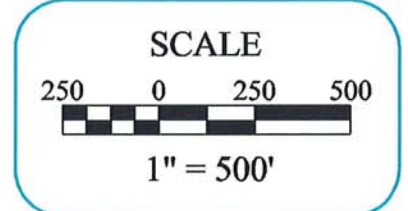
| LEGEND  |                               |   |                                   |
|---|-------------------------------|---|-----------------------------------|
|    | SC HIGH QUALITY WETLANDS      |    | NC EXCEPTIONAL WETLANDS           |
|    | SC WETLANDS                   |    | 100 YEAR FLOODPLAIN               |
|    | NC BENEFICIAL WETLANDS        |    | PROPOSED BRIDGE                   |
|    | NC SUBSTANTIAL WETLANDS       |    | PROPOSED CENTERLINE               |
|  | NEW RIGHT-OF-WAY              |  | THREATENED AND ENDANGERED SPECIES |
|  | CULTURAL RESOURCES            |  | RECREATIONAL AREAS                |
|  | POTENTIAL HAZARDOUS MATERIALS |  | CHURCH / CEMETERY                 |
|   |                               |  | PUBLIC SCHOOLS                    |

MAPS PREPARED DECEMBER, 2005  
 S.C. PHOTOGRAPHY DATE 2001  
 N.C. PHOTOGRAPHY DATE 2003

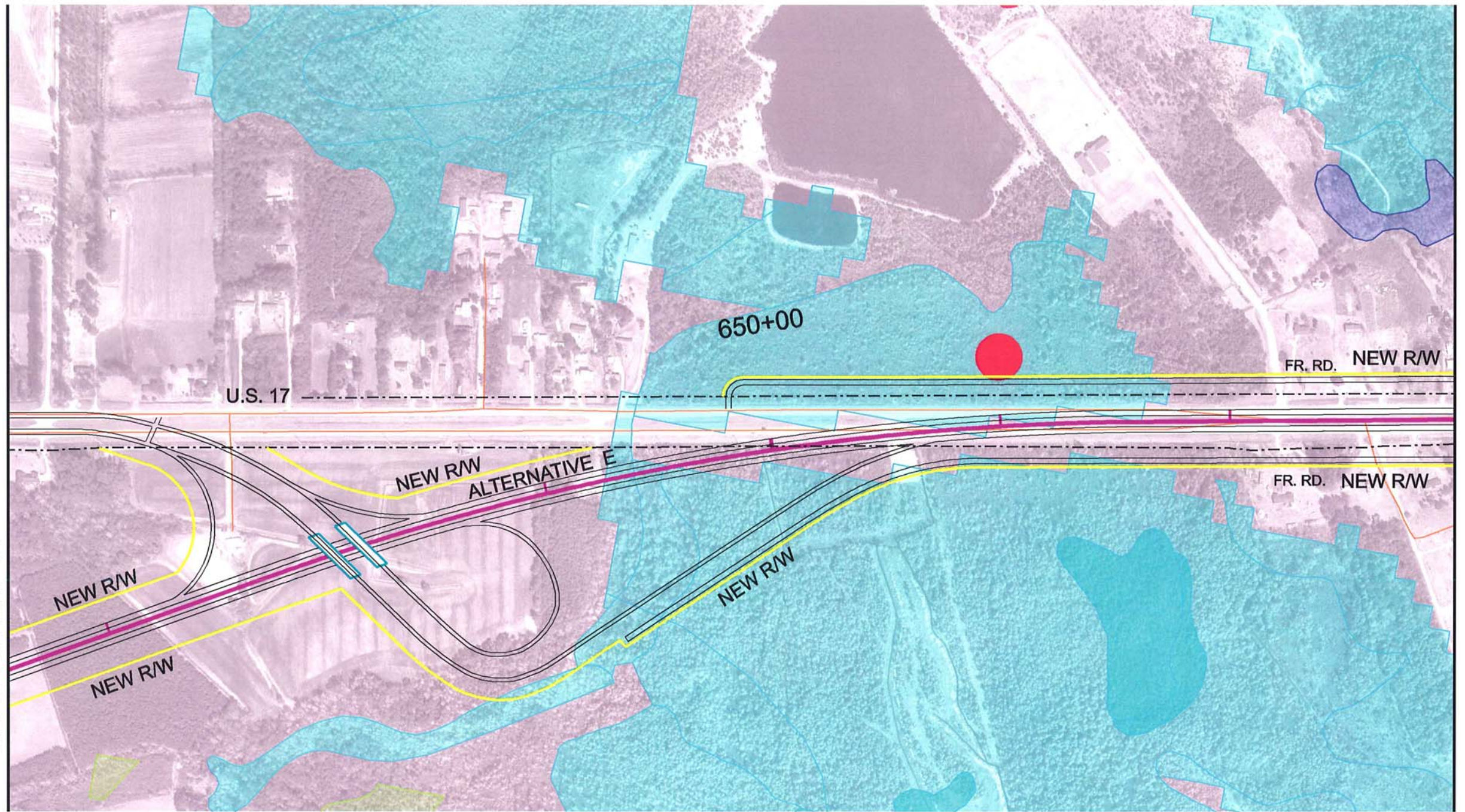
MAP  
54



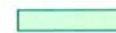







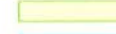






**CAROLINA BAYS PARKWAY EXTENSION**  
 BRUNSWICK COUNTY, NORTH CAROLINA  
 CORRIDOR MAPS



ALTERNATIVE E



**LEGEND**

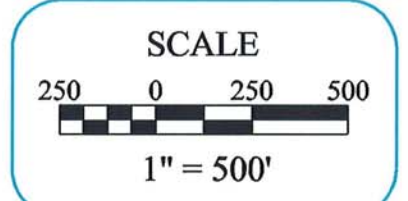
- |  |   |   |  |
|--|---|---|--|
|  SC HIGH QUALITY WETLANDS |  NC EXCEPTIONAL WETLANDS |  NEW RIGHT-OF-WAY                  |  RECREATIONAL AREAS |
|  SC WETLANDS              |  100 YEAR FLOODPLAIN     |  THREATENED AND ENDANGERED SPECIES |  CHURCH / CEMETERY  |
|  NC BENEFICIAL WETLANDS   |  PROPOSED BRIDGE         |  CULTURAL RESOURCES                |  PUBLIC SCHOOLS     |
|  NC SUBSTANTIAL WETLANDS  |  PROPOSED CENTERLINE     |  POTENTIAL HAZARDOUS MATERIALS     |  |

MAPS PREPARED DECEMBER, 2005  
S.C. PHOTOGRAPHY DATE 2001  
N.C. PHOTOGRAPHY DATE 2003

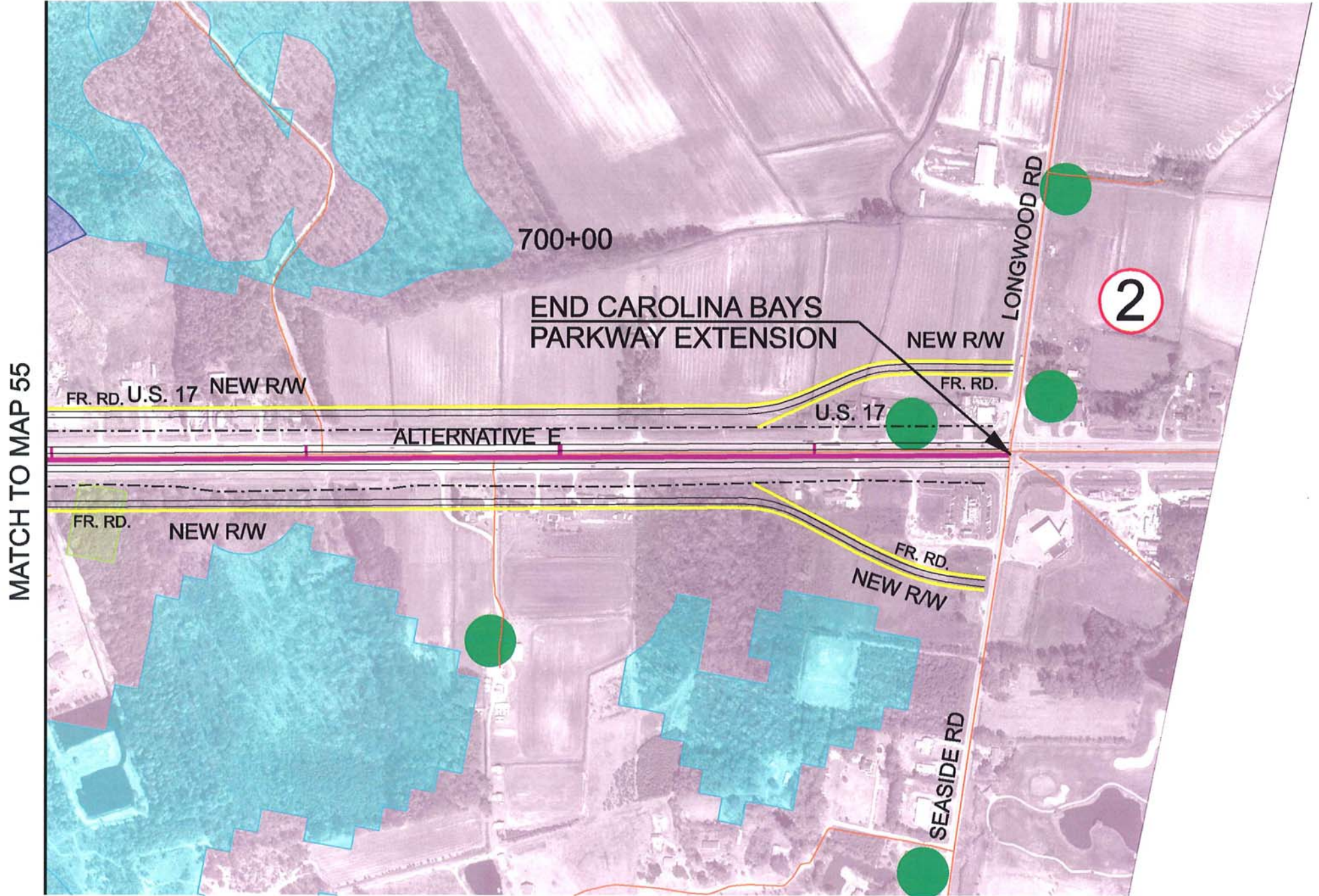
MAP  
55







**CAROLINA BAYS PARKWAY EXTENSION**  
BRUNSWICK COUNTY, NORTH CAROLINA  
**CORRIDOR MAPS**



**ALTERNATIVE E**



| LEGEND  |                                   |
|---|-----------------------------------|
|    | SC HIGH QUALITY WETLANDS          |
|    | SC WETLANDS                       |
|    | NC BENEFICIAL WETLANDS            |
|    | NC SUBSTANTIAL WETLANDS           |
|    | NC EXCEPTIONAL WETLANDS           |
|    | 100 YEAR FLOODPLAIN               |
|    | PROPOSED BRIDGE                   |
|    | PROPOSED CENTERLINE               |
|  | NEW RIGHT-OF-WAY                  |
|  | THREATENED AND ENDANGERED SPECIES |
|  | CULTURAL RESOURCES                |
|  | POTENTIAL HAZARDOUS MATERIALS     |
|  | RECREATIONAL AREAS                |
|  | CHURCH / CEMETERY                 |
|  | PUBLIC SCHOOLS                    |

MAPS PREPARED DECEMBER, 2005  
 S.C. PHOTOGRAPHY DATE 2001  
 N.C. PHOTOGRAPHY DATE 2003

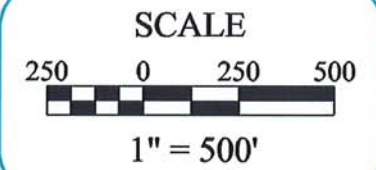
MAP  
56



## CAROLINA BAYS PARKWAY EXTENSION

BRUNSWICK COUNTY, NORTH CAROLINA

### CORRIDOR MAPS



ALTERNATIVE E