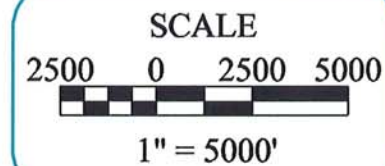


SHEET PREPARED DECEMBER, 2005

SHEET  
10

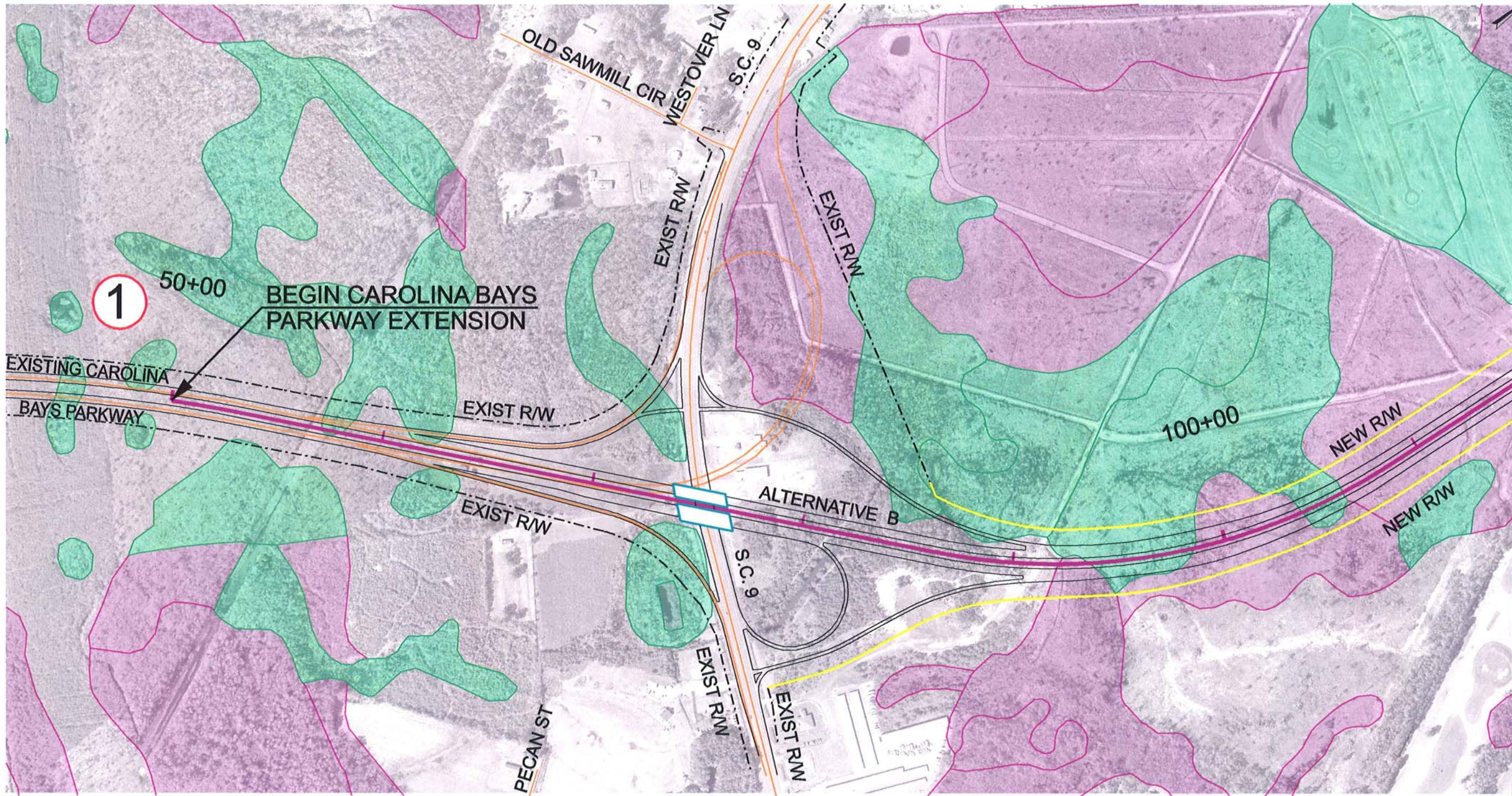


**CAROLINA BAYS PARKWAY EXTENSION**  
 HORRY COUNTY, SOUTH CAROLINA  
 BRUNSWICK COUNTY, NORTH CAROLINA  
**CORRIDOR MAPS**



SHEET LAYOUT  
 ALTERNATIVE B





MATCH TO MAP 13

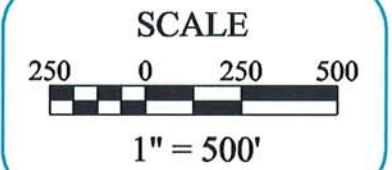
LEGEND			
	SC HIGH QUALITY WETLANDS		NC EXCEPTIONAL WETLANDS
	SC WETLANDS		100 YEAR FLOODPLAIN
	NC BENEFICIAL WETLANDS		PROPOSED BRIDGE
	NC SUBSTANTIAL WETLANDS		PROPOSED CENTERLINE
	NEW RIGHT-OF-WAY		THREATENED AND ENDANGERED SPECIES
	RECREATIONAL AREAS		CULTURAL RESOURCES
	CHURCH / CEMETERY		POTENTIAL HAZARDOUS MATERIALS
	PUBLIC SCHOOLS		

MAPS PREPARED DECEMBER, 2005  
 S.C. PHOTOGRAPHY DATE 2001  
 N.C. PHOTOGRAPHY DATE 2003

MAP  
12

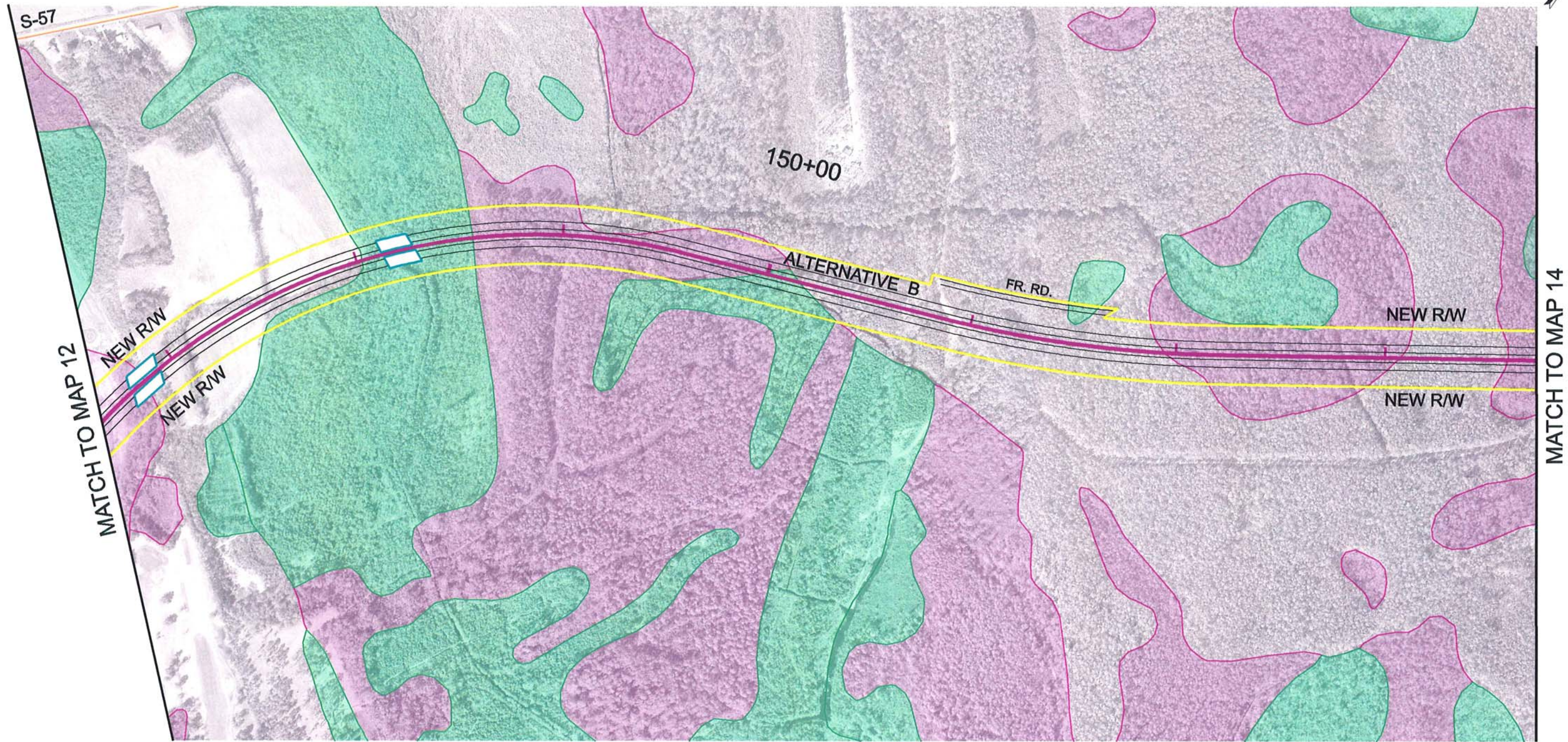


**CAROLINA BAYS PARKWAY EXTENSION**  
 HORRY COUNTY, SOUTH CAROLINA  
 CORRIDOR MAPS



ALTERNATIVE B





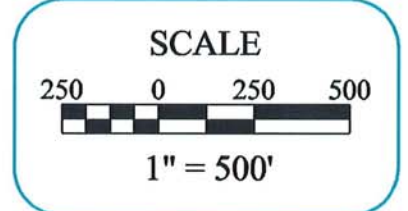
LEGEND			
	SC HIGH QUALITY WETLANDS		NC EXCEPTIONAL WETLANDS
	SC WETLANDS		100 YEAR FLOODPLAIN
	NC BENEFICIAL WETLANDS		PROPOSED BRIDGE
	NC SUBSTANTIAL WETLANDS		PROPOSED CENTERLINE
	NEW RIGHT-OF-WAY		THREATENED AND ENDANGERED SPECIES
	RECREATIONAL AREAS		CULTURAL RESOURCES
	CHURCH / CEMETERY		POTENTIAL HAZARDOUS MATERIALS
			PUBLIC SCHOOLS

MAPS PREPARED DECEMBER, 2005  
 S.C. PHOTOGRAPHY DATE 2001  
 N.C. PHOTOGRAPHY DATE 2003

MAP  
13

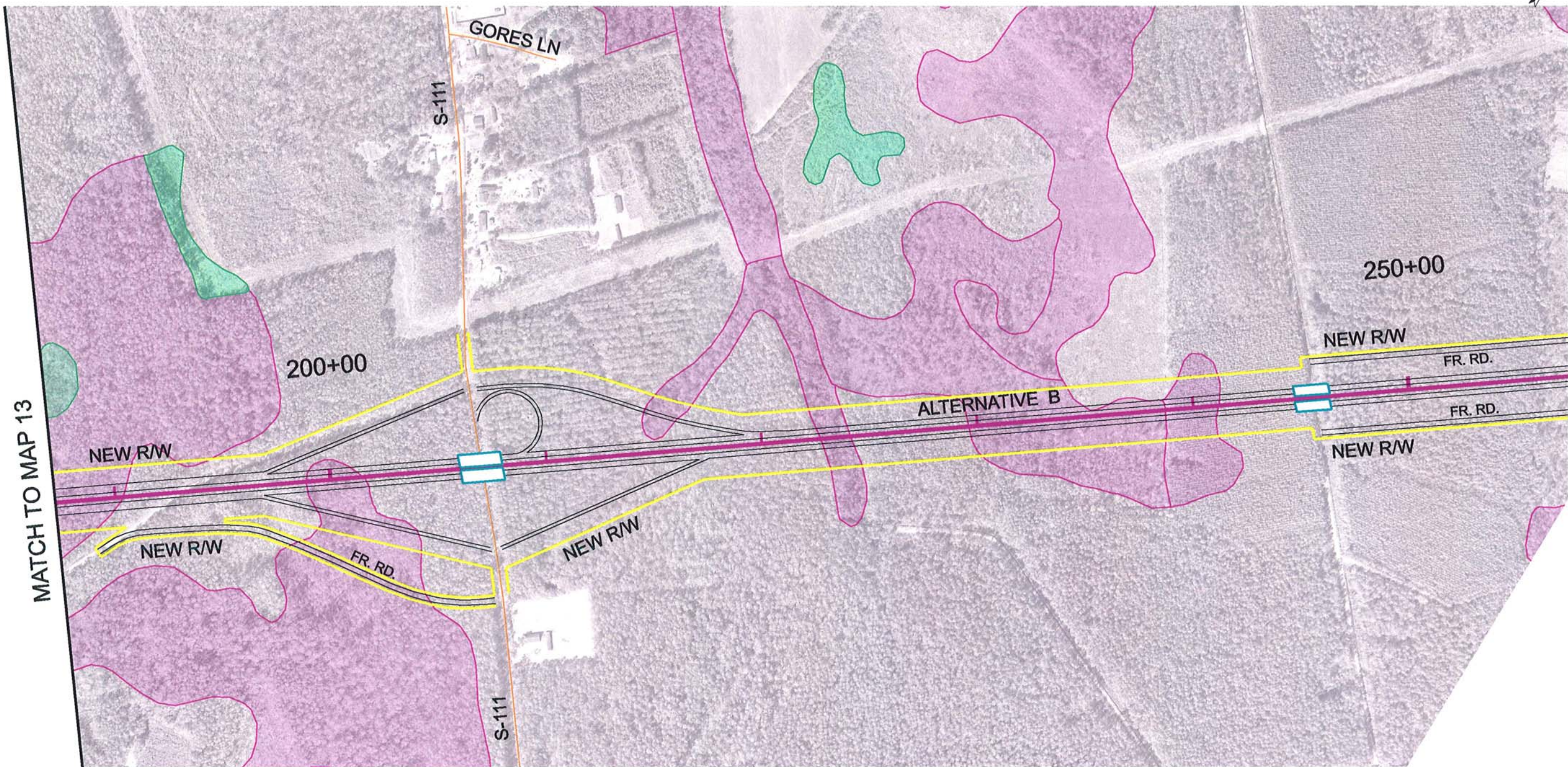


**CAROLINA BAYS PARKWAY EXTENSION**  
 HORRY COUNTY, SOUTH CAROLINA  
**CORRIDOR MAPS**



**ALTERNATIVE B**





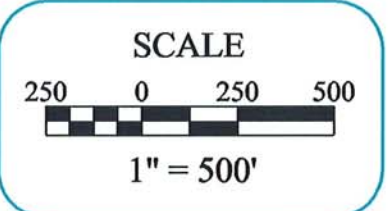
LEGEND			
	SC HIGH QUALITY WETLANDS		NC EXCEPTIONAL WETLANDS
	SC WETLANDS		100 YEAR FLOODPLAIN
	NC BENEFICIAL WETLANDS		PROPOSED BRIDGE
	NC SUBSTANTIAL WETLANDS		PROPOSED CENTERLINE
	NEW RIGHT-OF-WAY		THREATENED AND ENDANGERED SPECIES
	CULTURAL RESOURCES		RECREATIONAL AREAS
	POTENTIAL HAZARDOUS MATERIALS		CHURCH / CEMETERY
			PUBLIC SCHOOLS

MAPS PREPARED DECEMBER, 2005  
 S.C. PHOTOGRAPHY DATE 2001  
 N.C. PHOTOGRAPHY DATE 2003

MAP  
14

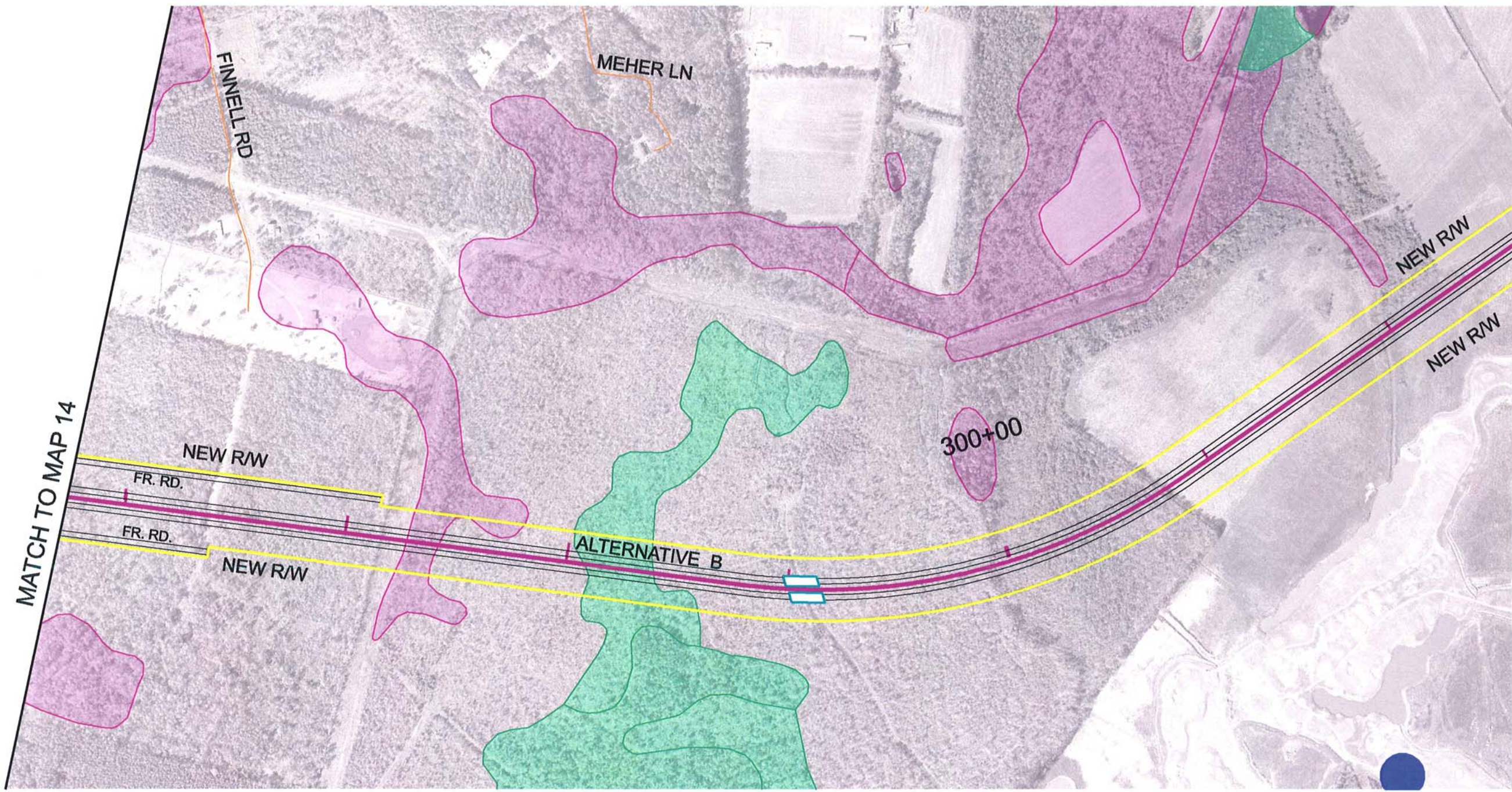


**CAROLINA BAYS PARKWAY EXTENSION**  
 HORRY COUNTY, SOUTH CAROLINA  
**CORRIDOR MAPS**



ALTERNATIVE B





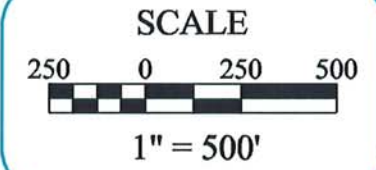
LEGEND			
	SC HIGH QUALITY WETLANDS		NC EXCEPTIONAL WETLANDS
	SC WETLANDS		100 YEAR FLOODPLAIN
	NC BENEFICIAL WETLANDS		PROPOSED BRIDGE
	NC SUBSTANTIAL WETLANDS		PROPOSED CENTERLINE
	NEW RIGHT-OF-WAY		THREATENED AND ENDANGERED SPECIES
	RECREATIONAL AREAS		CULTURAL RESOURCES
	CHURCH / CEMETERY		POTENTIAL HAZARDOUS MATERIALS
	PUBLIC SCHOOLS		

MAPS PREPARED DECEMBER, 2005  
 S.C. PHOTOGRAPHY DATE 2001  
 N.C. PHOTOGRAPHY DATE 2003

MAP  
15

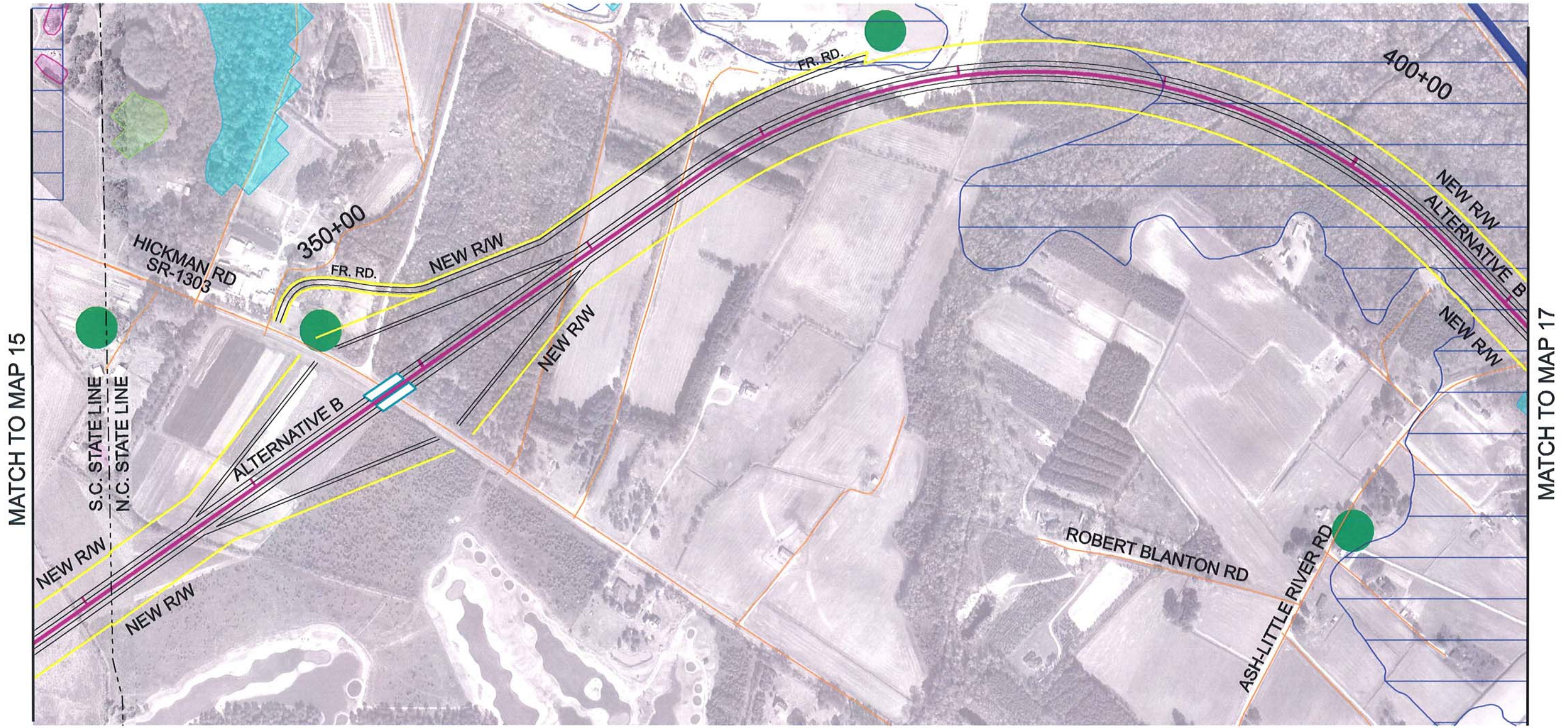


**CAROLINA BAYS PARKWAY EXTENSION**  
 HORRY COUNTY, SOUTH CAROLINA  
**CORRIDOR MAPS**



ALTERNATIVE B





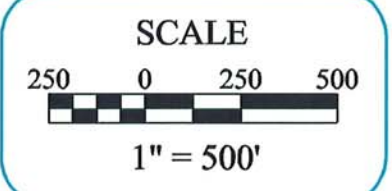
LEGEND			
	SC HIGH QUALITY WETLANDS		NC EXCEPTIONAL WETLANDS
	SC WETLANDS		100 YEAR FLOODPLAIN
	NC BENEFICIAL WETLANDS		PROPOSED BRIDGE
	NC SUBSTANTIAL WETLANDS		PROPOSED CENTERLINE
	NEW RIGHT-OF-WAY		THREATENED AND ENDANGERED SPECIES
	RECREATIONAL AREAS		CULTURAL RESOURCES
	CHURCH / CEMETERY		POTENTIAL HAZARDOUS MATERIALS
	PUBLIC SCHOOLS		

MAPS PREPARED DECEMBER, 2005  
 S.C. PHOTOGRAPHY DATE 2001  
 N.C. PHOTOGRAPHY DATE 2003

MAP  
16

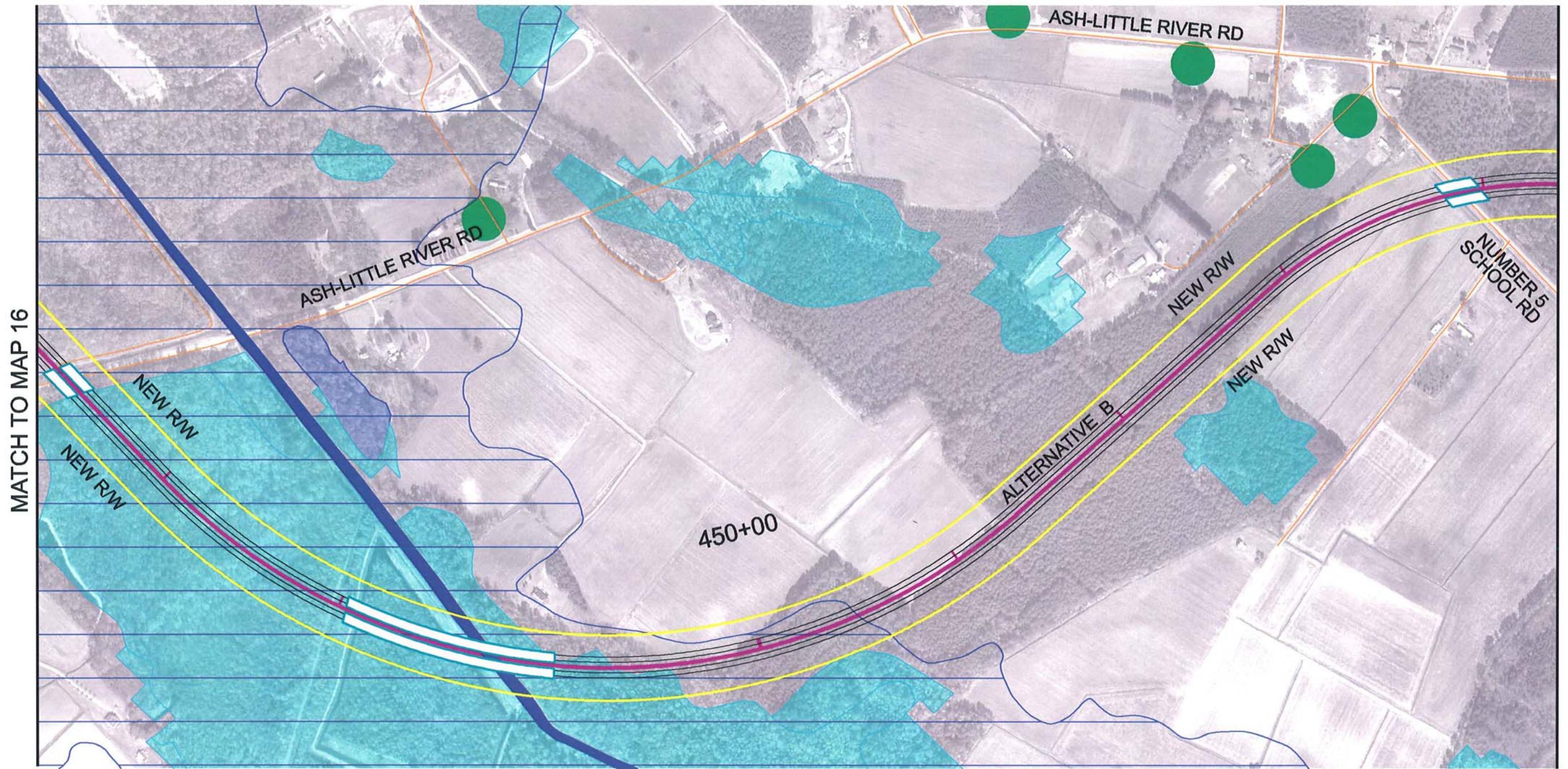


**CAROLINA BAYS PARKWAY EXTENSION**  
 Horry County, South Carolina  
 Brunswick County, North Carolina  
**CORRIDOR MAPS**



ALTERNATIVE B





LEGEND			
	SC HIGH QUALITY WETLANDS		NC EXCEPTIONAL WETLANDS
	SC WETLANDS		100 YEAR FLOODPLAIN
	NC BENEFICIAL WETLANDS		PROPOSED BRIDGE
	NC SUBSTANTIAL WETLANDS		PROPOSED CENTERLINE
	NEW RIGHT-OF-WAY		THREATENED AND ENDANGERED SPECIES
	RECREATIONAL AREAS		CULTURAL RESOURCES
	CHURCH / CEMETERY		POTENTIAL HAZARDOUS MATERIALS
	PUBLIC SCHOOLS		

MAPS PREPARED DECEMBER, 2005  
 S.C. PHOTOGRAPHY DATE 2001  
 N.C. PHOTOGRAPHY DATE 2003

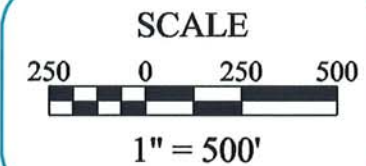
MAP  
17



## CAROLINA BAYS PARKWAY EXTENSION

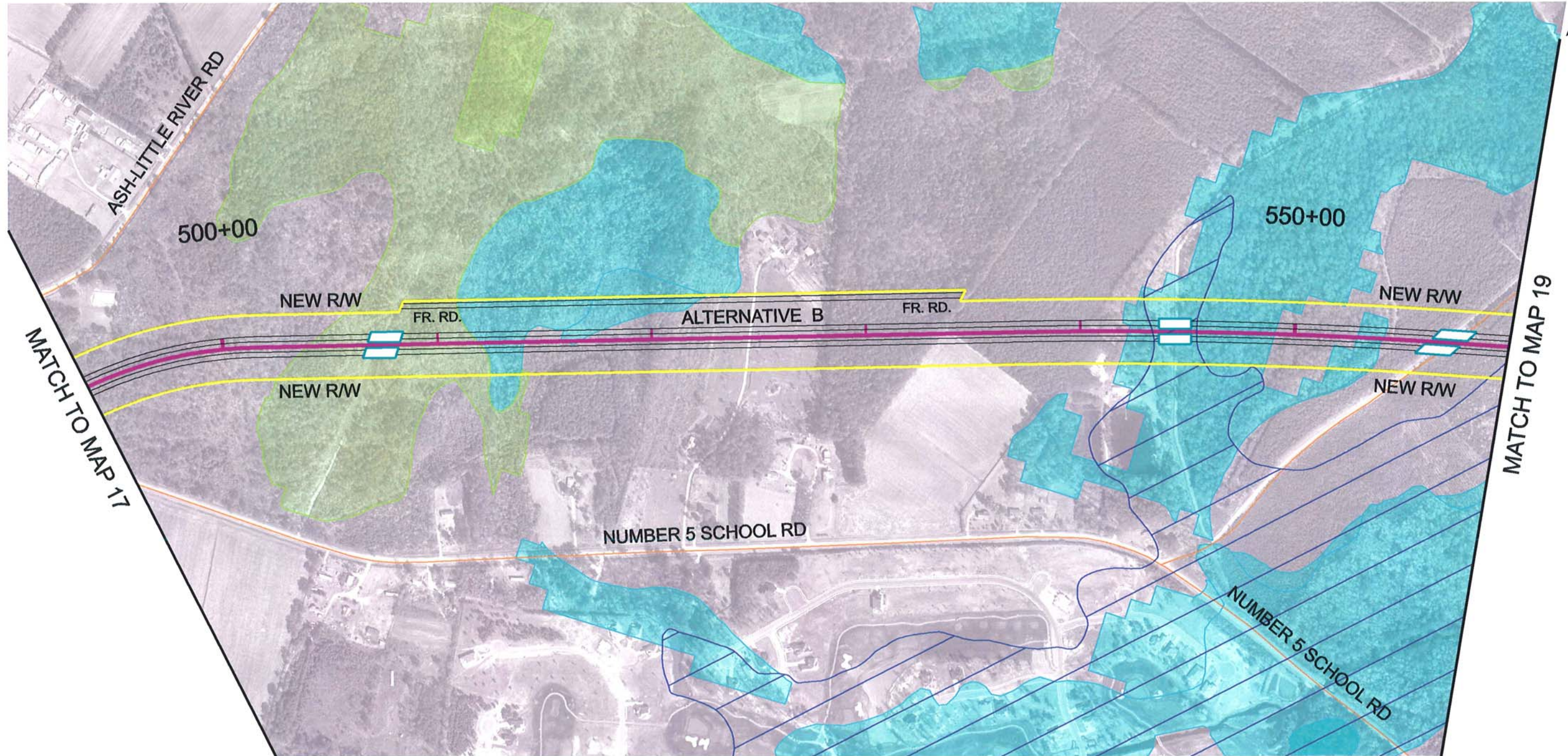
BRUNSWICK COUNTY, NORTH CAROLINA

### CORRIDOR MAPS



ALTERNATIVE B





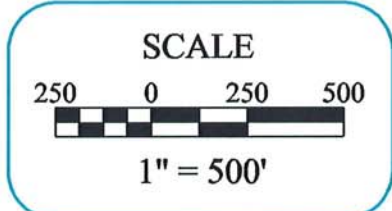
LEGEND			
	SC HIGH QUALITY WETLANDS		NC EXCEPTIONAL WETLANDS
	SC WETLANDS		100 YEAR FLOODPLAIN
	NC BENEFICIAL WETLANDS		PROPOSED BRIDGE
	NC SUBSTANTIAL WETLANDS		PROPOSED CENTERLINE
	NEW RIGHT-OF-WAY		THREATENED AND ENDANGERED SPECIES
	RECREATIONAL AREAS		CULTURAL RESOURCES
	CHURCH / CEMETERY		POTENTIAL HAZARDOUS MATERIALS
	PUBLIC SCHOOLS		

MAPS PREPARED DECEMBER, 2005  
 S.C. PHOTOGRAPHY DATE 2001  
 N.C. PHOTOGRAPHY DATE 2003

MAP  
18

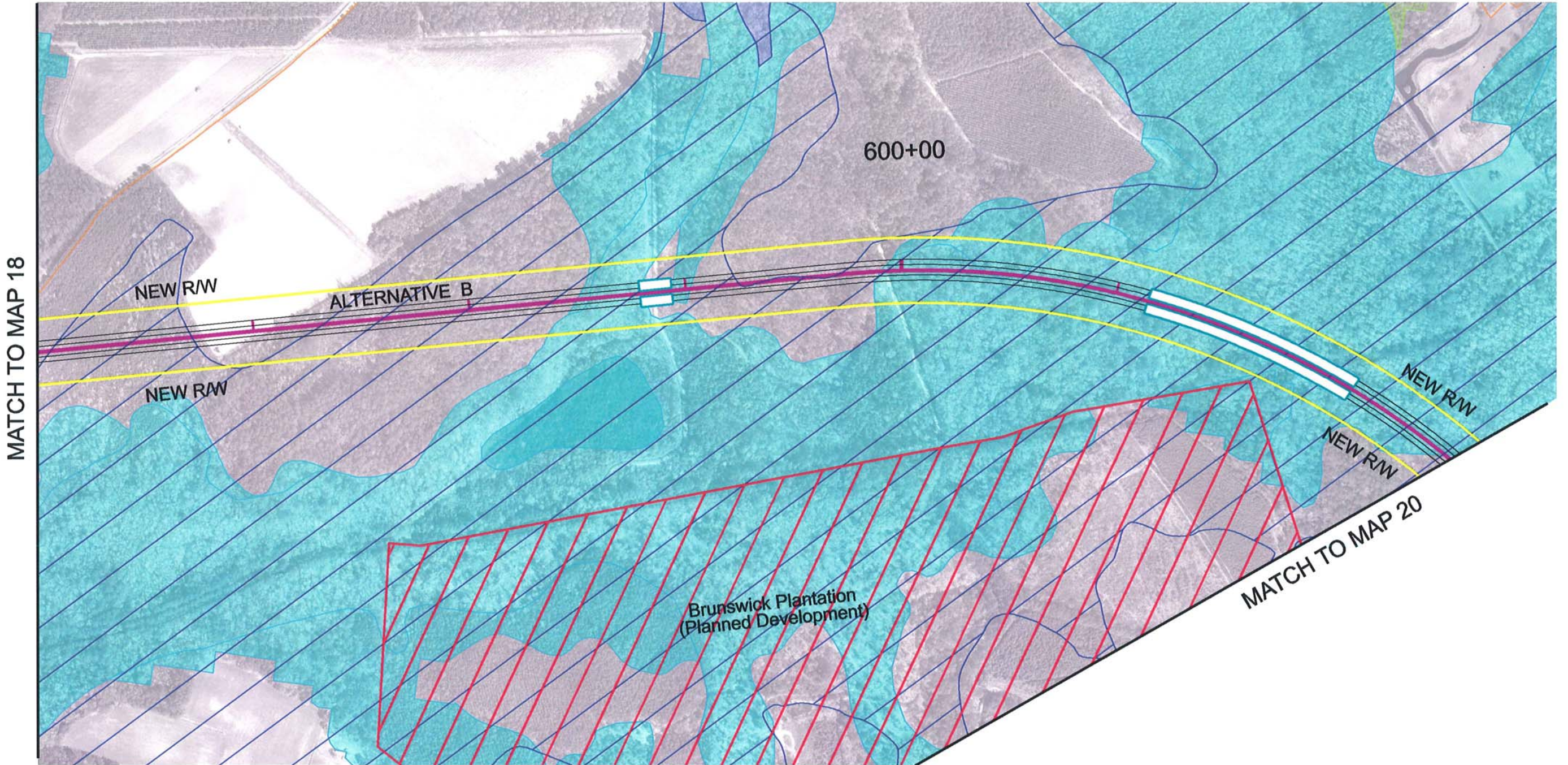


**CAROLINA BAYS PARKWAY EXTENSION**  
 BRUNSWICK COUNTY, NORTH CAROLINA  
 CORRIDOR MAPS



ALTERNATIVE B





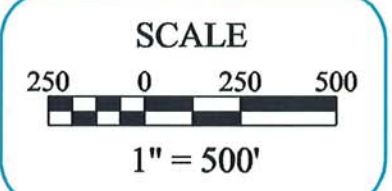
LEGEND	
	SC HIGH QUALITY WETLANDS
	SC WETLANDS
	NC BENEFICIAL WETLANDS
	NC SUBSTANTIAL WETLANDS
	NC EXCEPTIONAL WETLANDS
	100 YEAR FLOODPLAIN
	PROPOSED BRIDGE
	PROPOSED CENTERLINE
	NEW RIGHT-OF-WAY
	THREATENED AND ENDANGERED SPECIES
	CULTURAL RESOURCES
	POTENTIAL HAZARDOUS MATERIALS
	RECREATIONAL AREAS
	CHURCH / CEMETERY
	PUBLIC SCHOOLS

MAPS PREPARED DECEMBER, 2005  
 S.C. PHOTOGRAPHY DATE 2001  
 N.C. PHOTOGRAPHY DATE 2003

MAP  
19

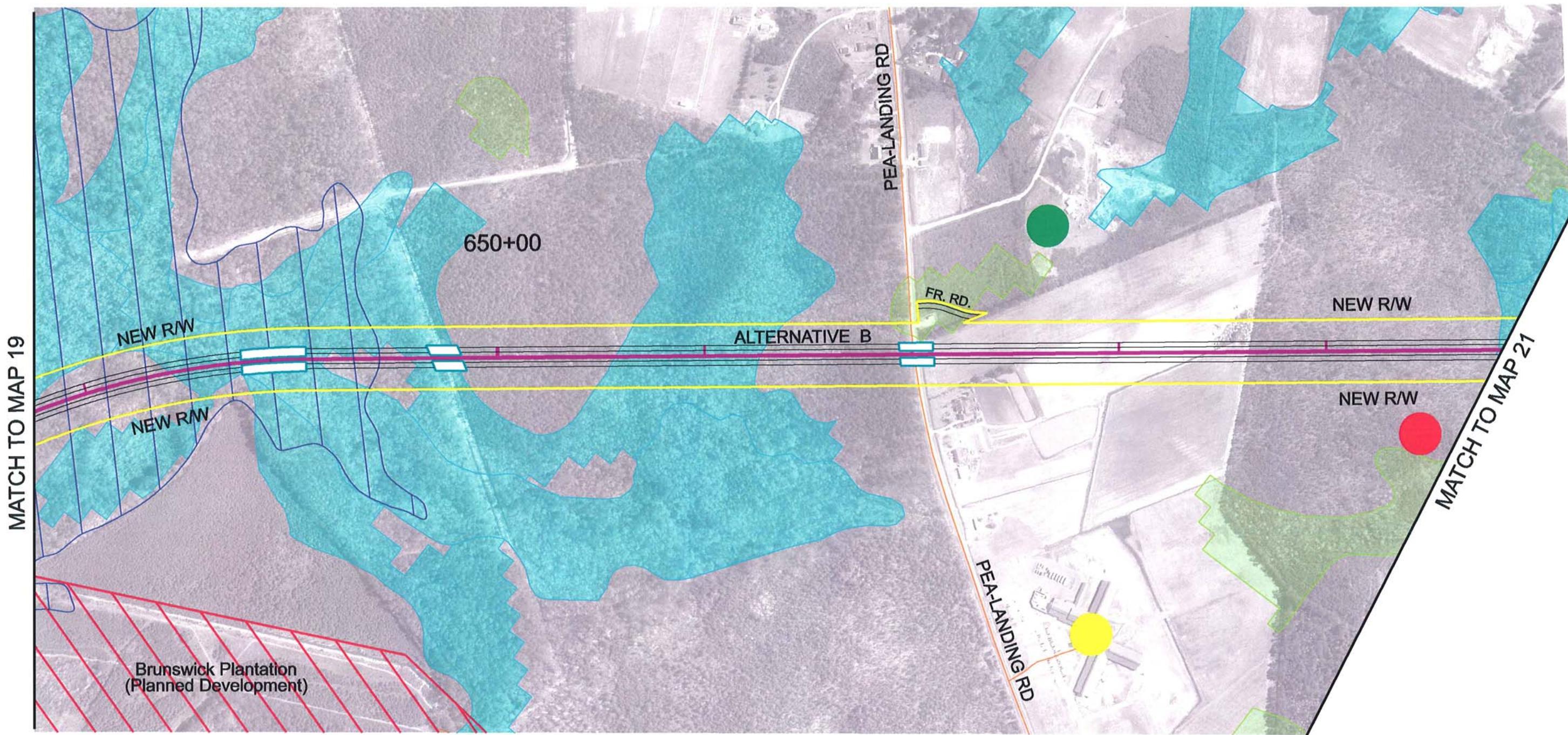


**CAROLINA BAYS PARKWAY EXTENSION**  
 BRUNSWICK COUNTY, NORTH CAROLINA  
 CORRIDOR MAPS



ALTERNATIVE B





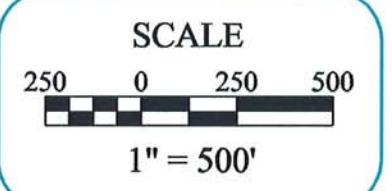
LEGEND			
	SC HIGH QUALITY WETLANDS		NC EXCEPTIONAL WETLANDS
	SC WETLANDS		100 YEAR FLOODPLAIN
	NC BENEFICIAL WETLANDS		PROPOSED BRIDGE
	NC SUBSTANTIAL WETLANDS		PROPOSED CENTERLINE
	NEW RIGHT-OF-WAY		THREATENED AND ENDANGERED SPECIES
	CULTURAL RESOURCES		RECREATIONAL AREAS
	POTENTIAL HAZARDOUS MATERIALS		CHURCH / CEMETERY
			PUBLIC SCHOOLS

MAPS PREPARED DECEMBER, 2005  
 S.C. PHOTOGRAPHY DATE 2001  
 N.C. PHOTOGRAPHY DATE 2003

MAP  
20



**CAROLINA BAYS PARKWAY EXTENSION**  
 BRUNSWICK COUNTY, NORTH CAROLINA  
**CORRIDOR MAPS**

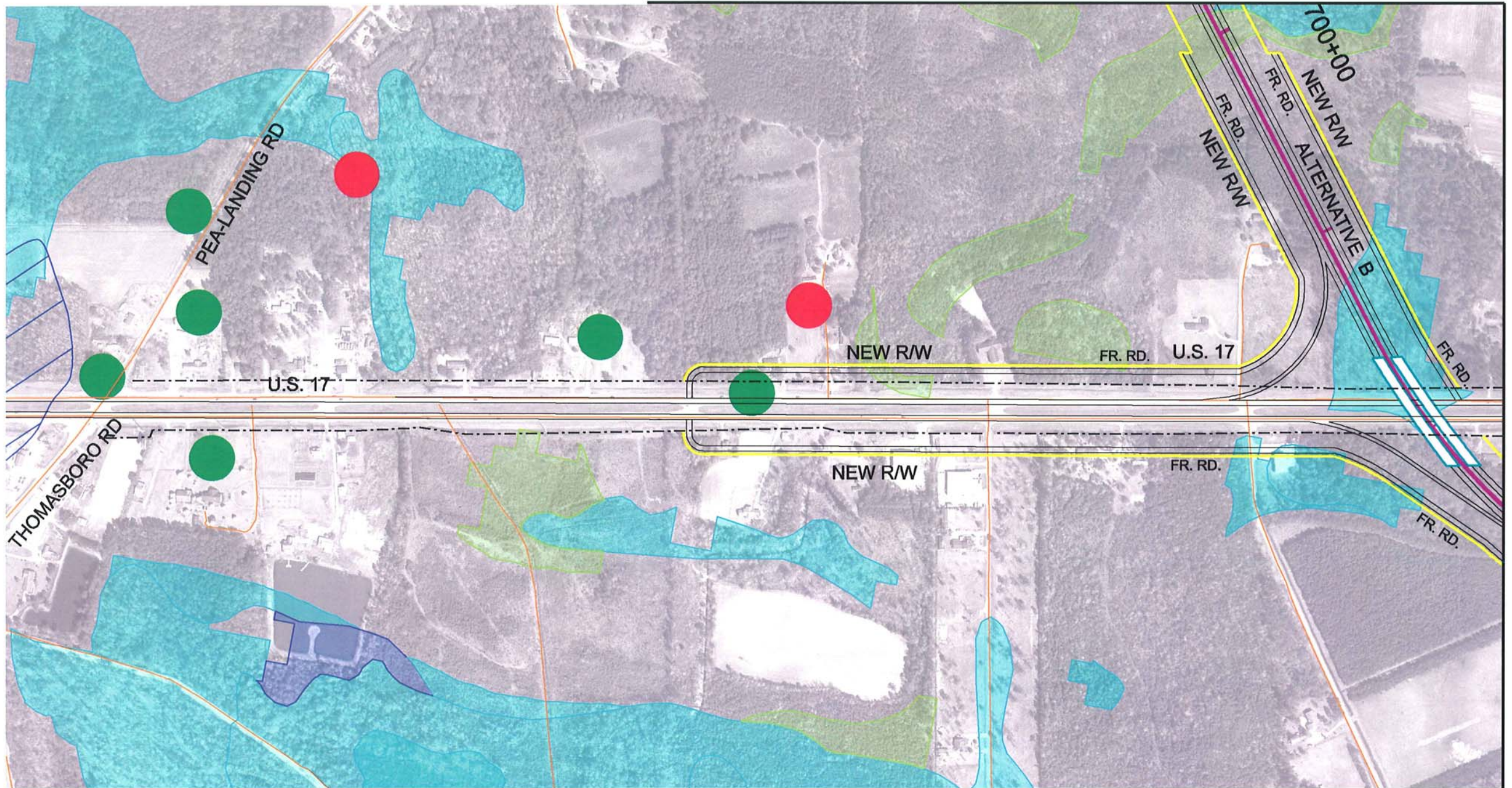


ALTERNATIVE B











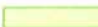








MATCH TO MAP 20



MATCH TO MAP 22

**LEGEND**

- |  |   |   |  |
|--|---|---|--|
|  SC HIGH QUALITY WETLANDS |  NC EXCEPTIONAL WETLANDS |  NEW RIGHT-OF-WAY                  |  RECREATIONAL AREAS |
|  SC WETLANDS              |  100 YEAR FLOODPLAIN     |  THREATENED AND ENDANGERED SPECIES |  CHURCH / CEMETERY  |
|  NC BENEFICIAL WETLANDS   |  PROPOSED BRIDGE         |  CULTURAL RESOURCES                |  PUBLIC SCHOOLS     |
|  NC SUBSTANTIAL WETLANDS  |  PROPOSED CENTERLINE     |  POTENTIAL HAZARDOUS MATERIALS     |  |

MAPS PREPARED DECEMBER, 2005  
S.C. PHOTOGRAPHY DATE 2001  
N.C. PHOTOGRAPHY DATE 2003

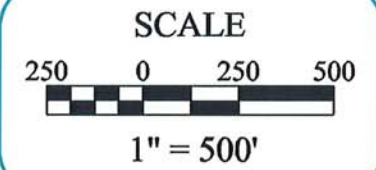
MAP  
21



### CAROLINA BAYS PARKWAY EXTENSION

BRUNSWICK COUNTY, NORTH CAROLINA

### CORRIDOR MAPS

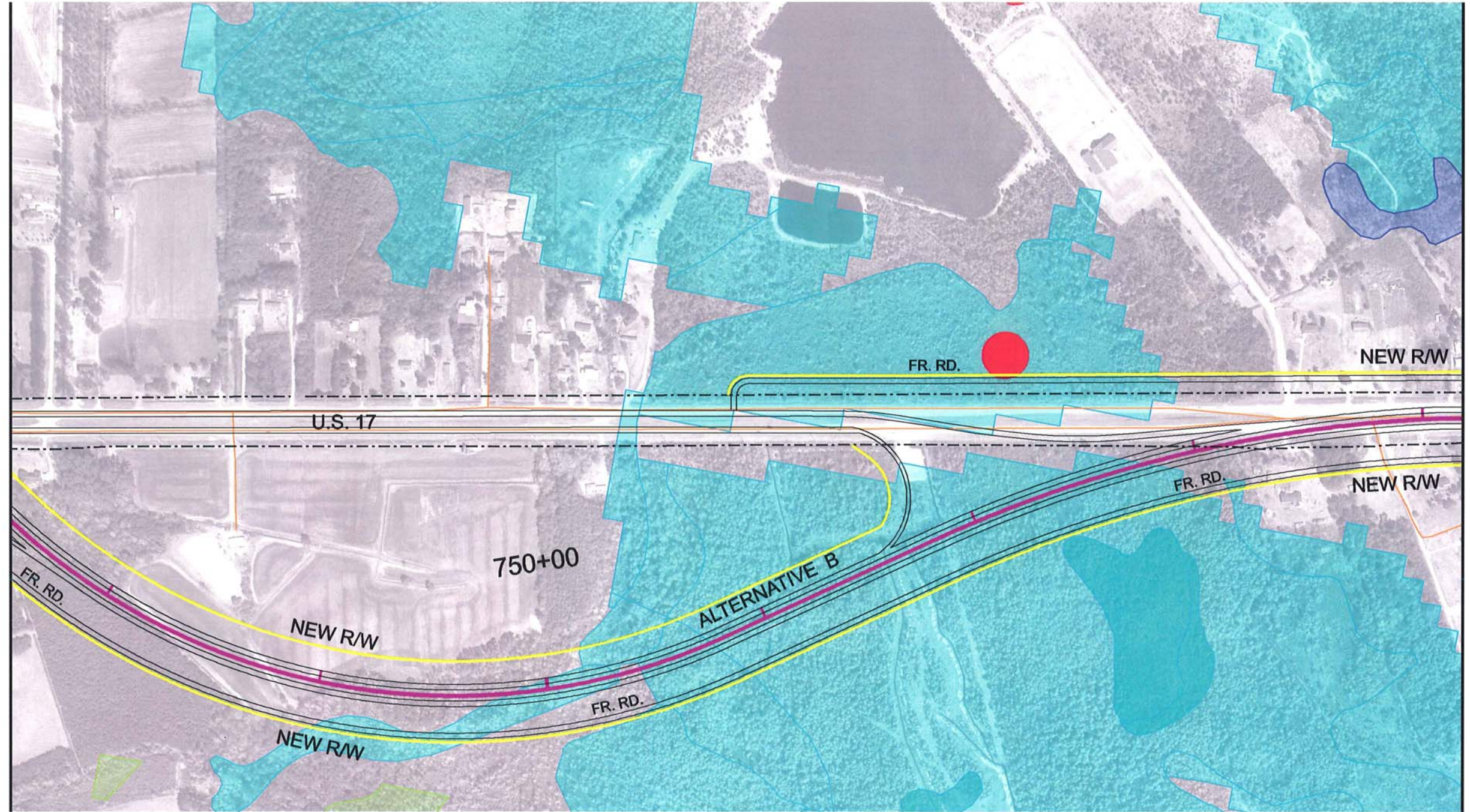


ALTERNATIVE B





MATCH TO MAP 21



MATCH TO MAP 23

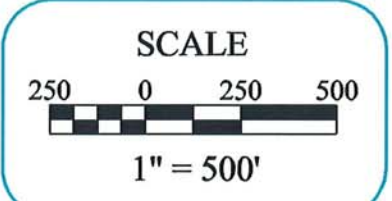
LEGEND	
	SC HIGH QUALITY WETLANDS
	SC WETLANDS
	NC BENEFICIAL WETLANDS
	NC SUBSTANTIAL WETLANDS
	NC EXCEPTIONAL WETLANDS
	100 YEAR FLOODPLAIN
	PROPOSED BRIDGE
	PROPOSED CENTERLINE
	NEW RIGHT-OF-WAY
	THREATENED AND ENDANGERED SPECIES
	CULTURAL RESOURCES
	POTENTIAL HAZARDOUS MATERIALS
	RECREATIONAL AREAS
	CHURCH / CEMETERY
	PUBLIC SCHOOLS

MAPS PREPARED DECEMBER, 2005  
S.C. PHOTOGRAPHY DATE 2001  
N.C. PHOTOGRAPHY DATE 2003

MAP 22

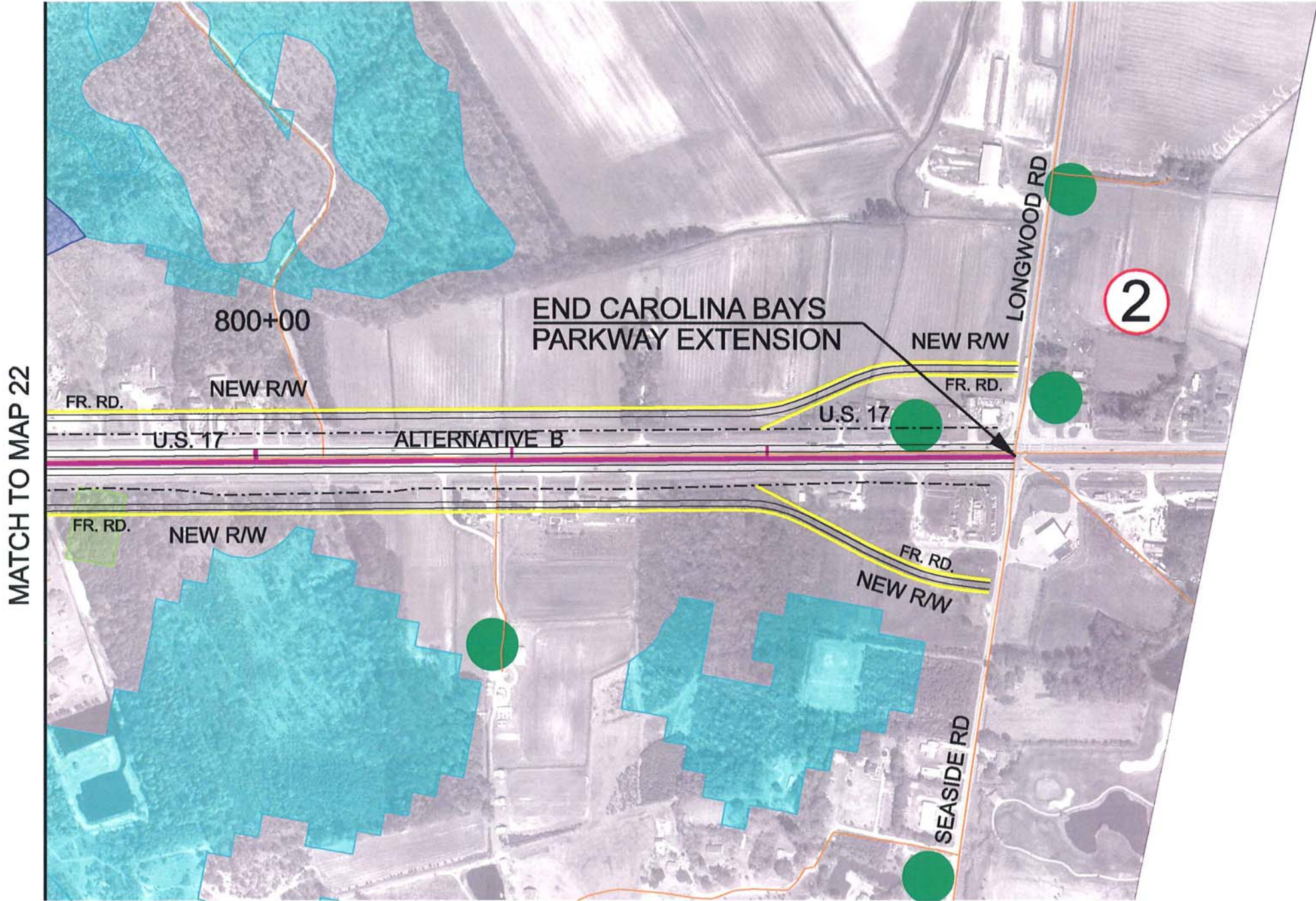


**CAROLINA BAYS PARKWAY EXTENSION**  
BRUNSWICK COUNTY, NORTH CAROLINA  
CORRIDOR MAPS



ALTERNATIVE B





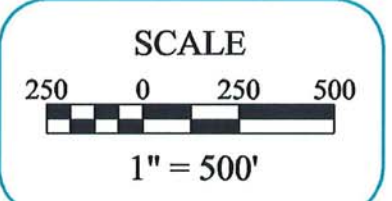
LEGEND	
	SC HIGH QUALITY WETLANDS
	SC WETLANDS
	NC BENEFICIAL WETLANDS
	NC SUBSTANTIAL WETLANDS
	NC EXCEPTIONAL WETLANDS
	100 YEAR FLOODPLAIN
	PROPOSED BRIDGE
	PROPOSED CENTERLINE
	NEW RIGHT-OF-WAY
	THREATENED AND ENDANGERED SPECIES
	CULTURAL RESOURCES
	POTENTIAL HAZARDOUS MATERIALS
	RECREATIONAL AREAS
	CHURCH / CEMETERY
	PUBLIC SCHOOLS

MAPS PREPARED DECEMBER, 2005  
 S.C. PHOTOGRAPHY DATE 2001  
 N.C. PHOTOGRAPHY DATE 2003

MAP  
23



**CAROLINA BAYS PARKWAY EXTENSION**  
 BRUNSWICK COUNTY, NORTH CAROLINA  
 CORRIDOR MAPS



ALTERNATIVE B