

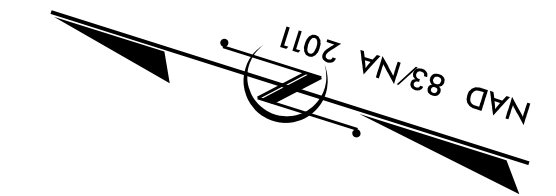
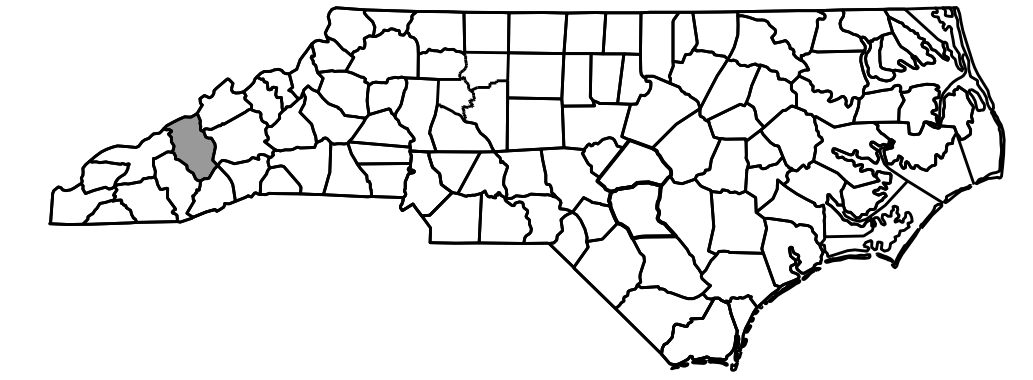
8/17/99

STATE OF NORTH CAROLINA
DIVISION OF HIGHWAYS

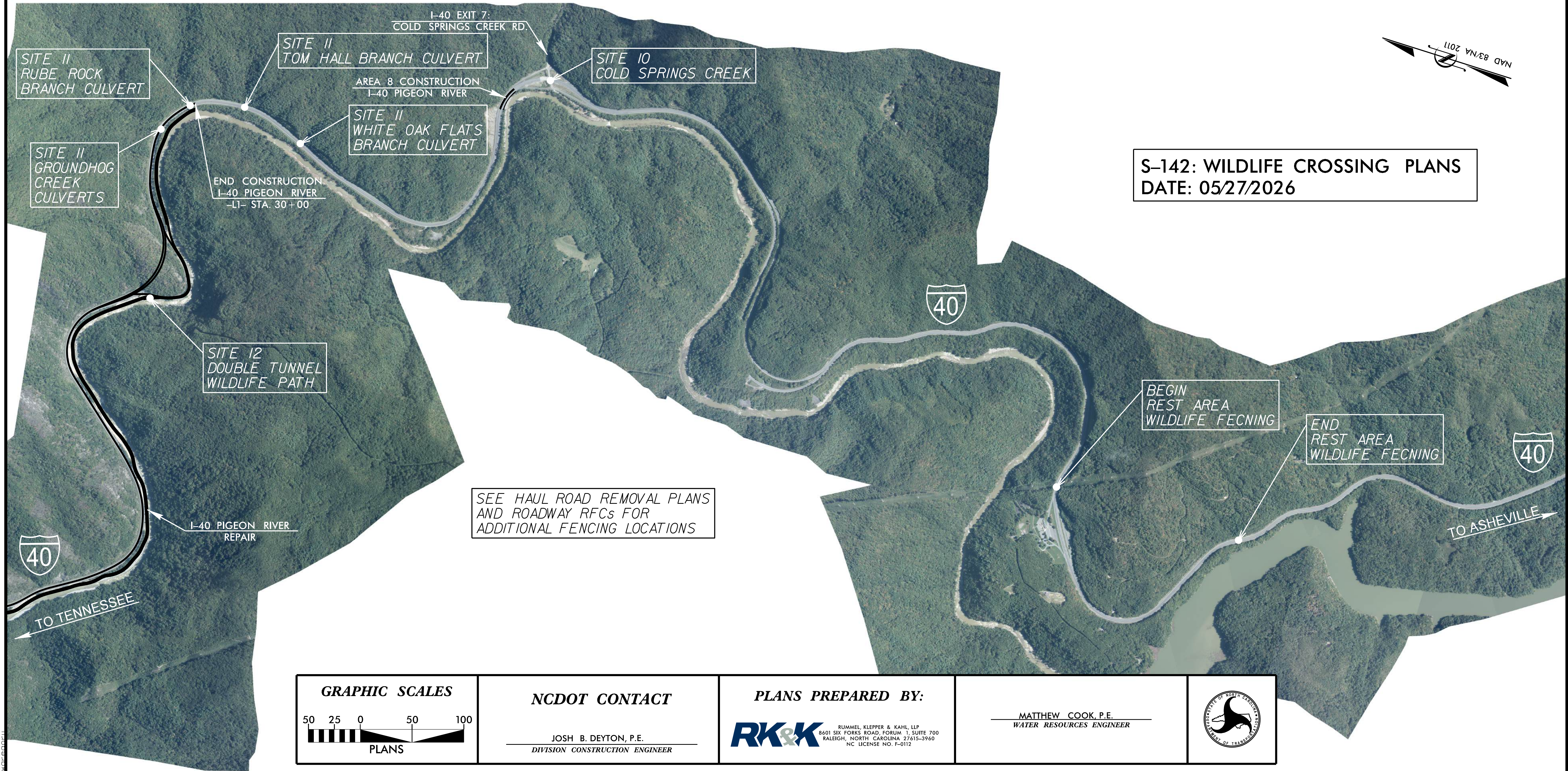
HAYWOOD COUNTY

PROJECT REFERENCE NO. I-40 PIGEON RIVER	SHEET NO. WCS-1
R/W SHEET NO.	HYDRAULICS ENGINEER
PRELIMINARY PLANS DO NOT USE FOR CONSTRUCTION	
DOCUMENT NOT CONSIDERED FINAL UNLESS ALL SIGNATURES COMPLETED	

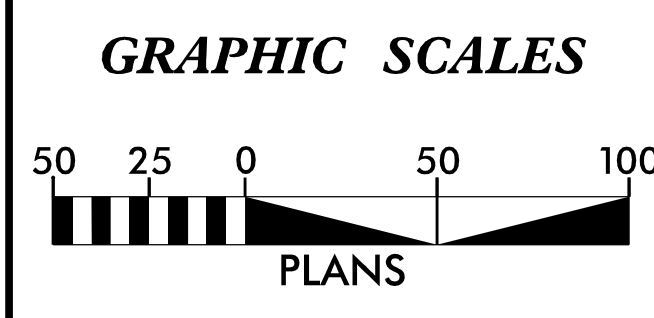
WILDLIFE CROSSING PLANS



S-142: WILDLIFE CROSSING PLANS
DATE: 05/27/2026



5/27/2026
c:\pwork\king\y\kk\production\0173853\I-40 Pigeon River - WCS - TSH.dgn



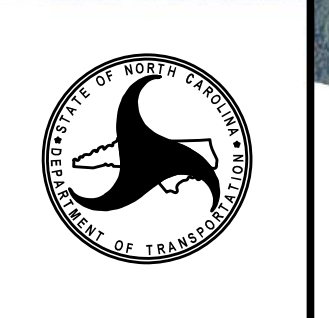
NCDOT CONTACT

JOSH B. DEYTON, P.E.
DIVISION CONSTRUCTION ENGINEER

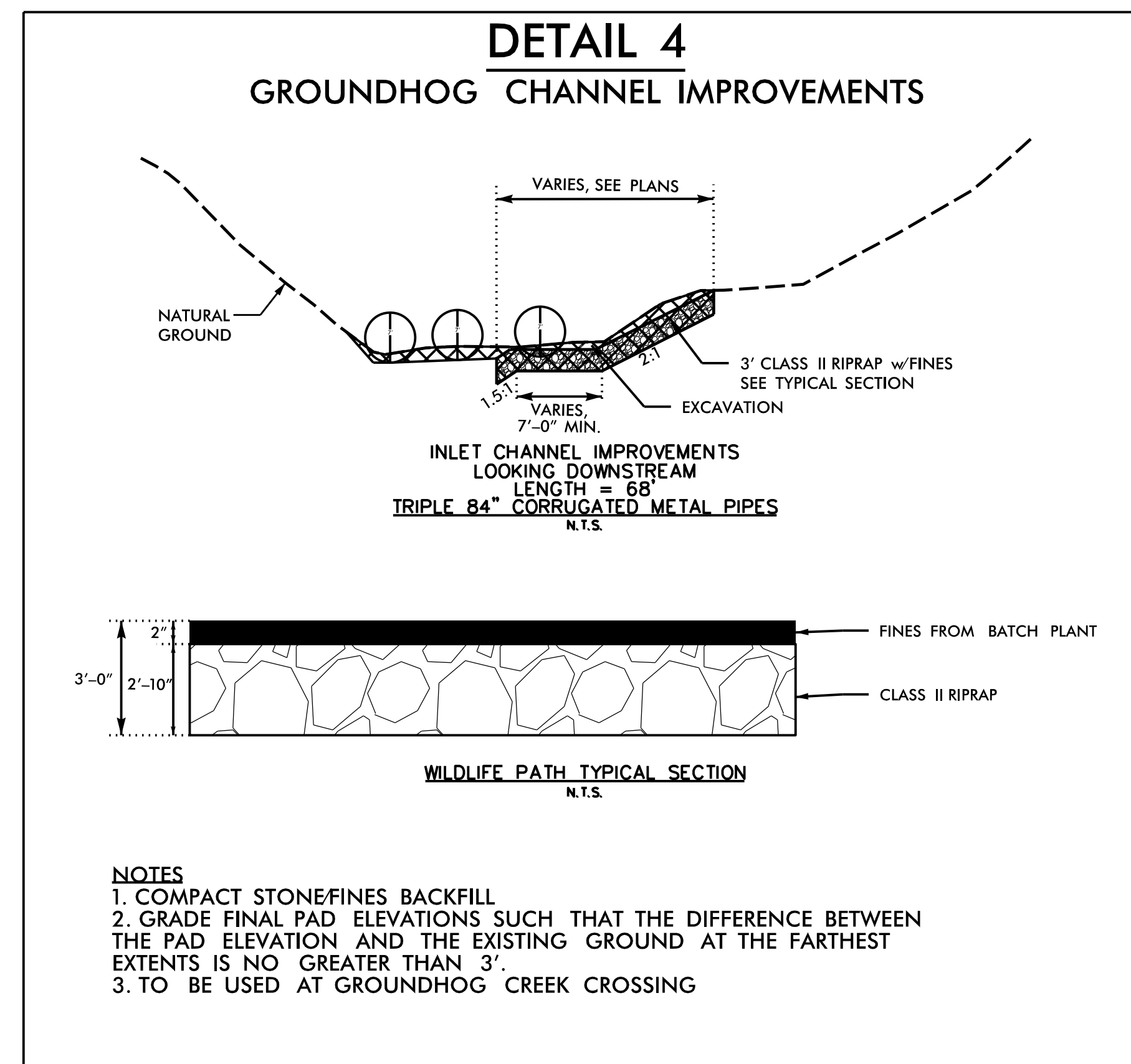
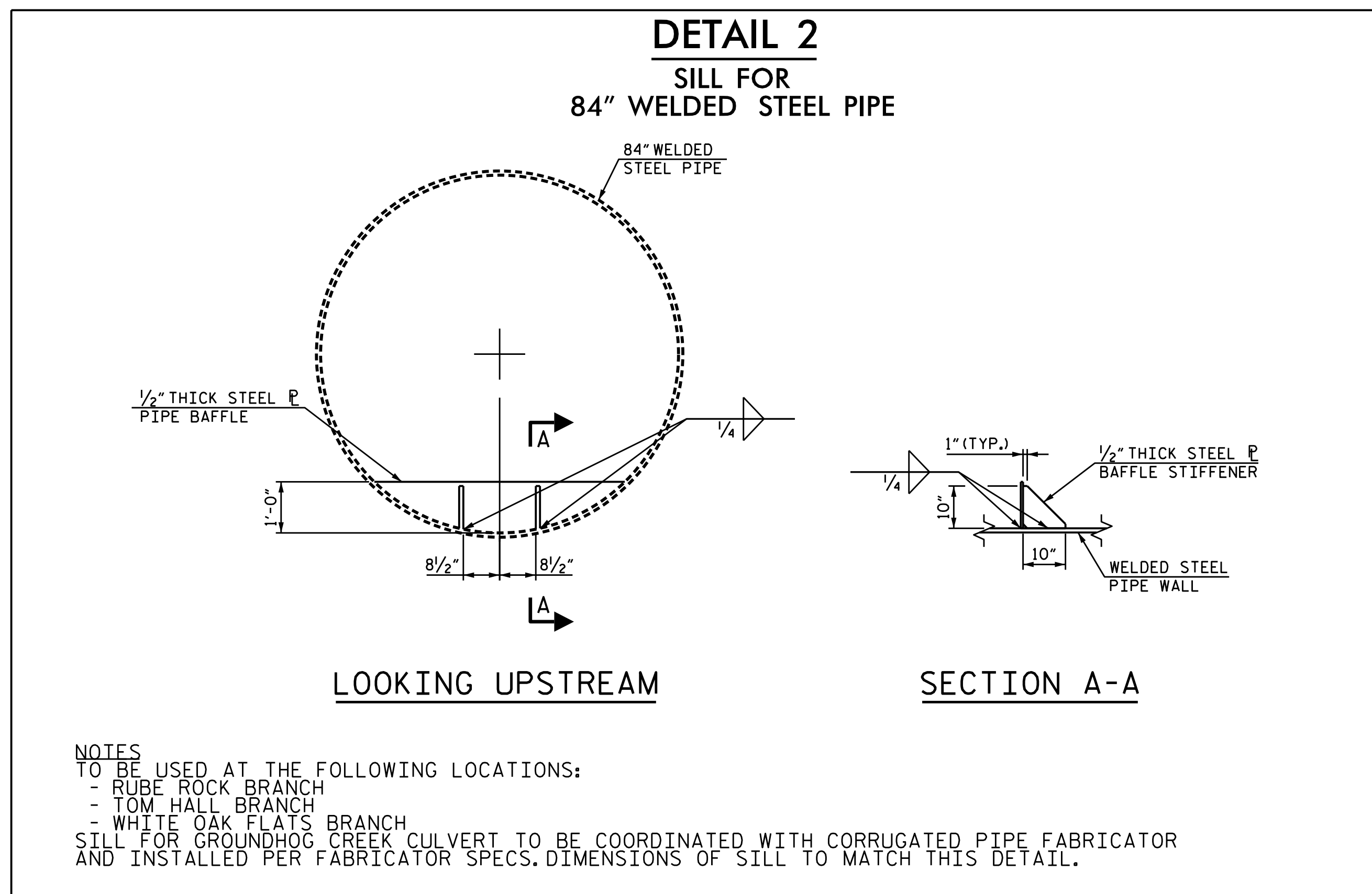
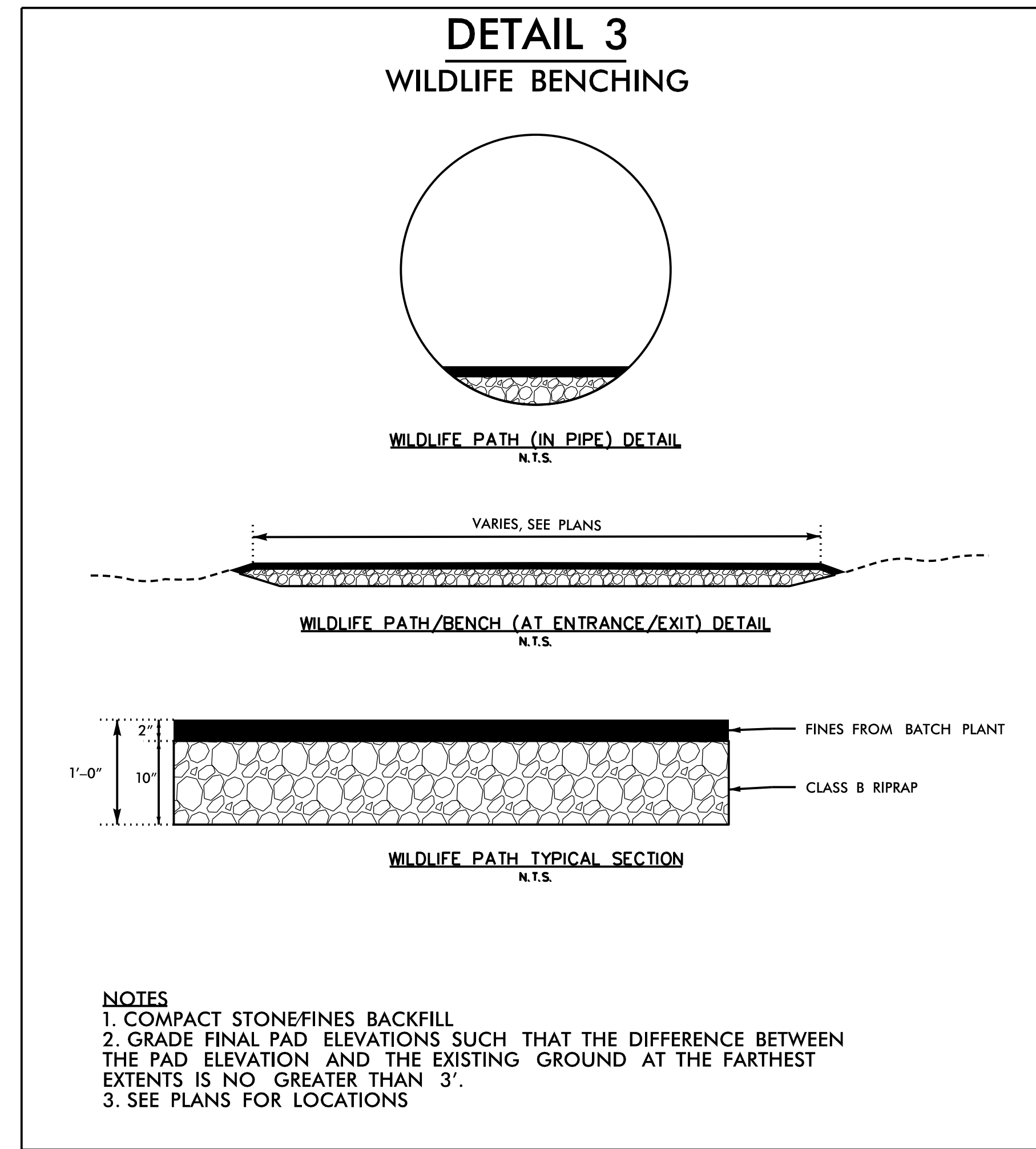
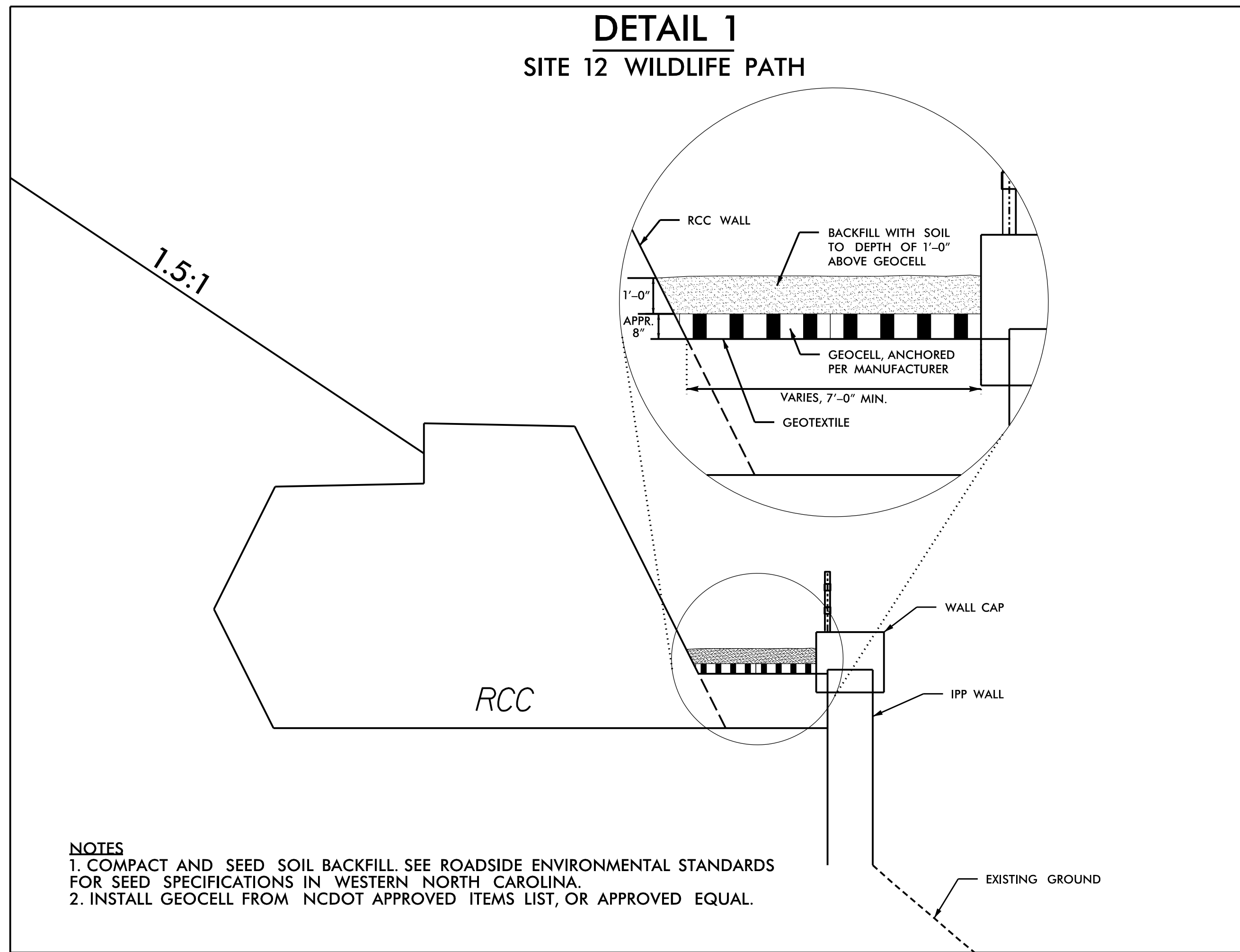
PLANS PREPARED BY:

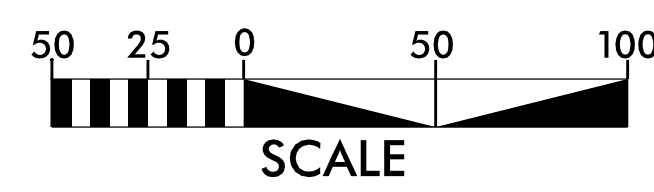
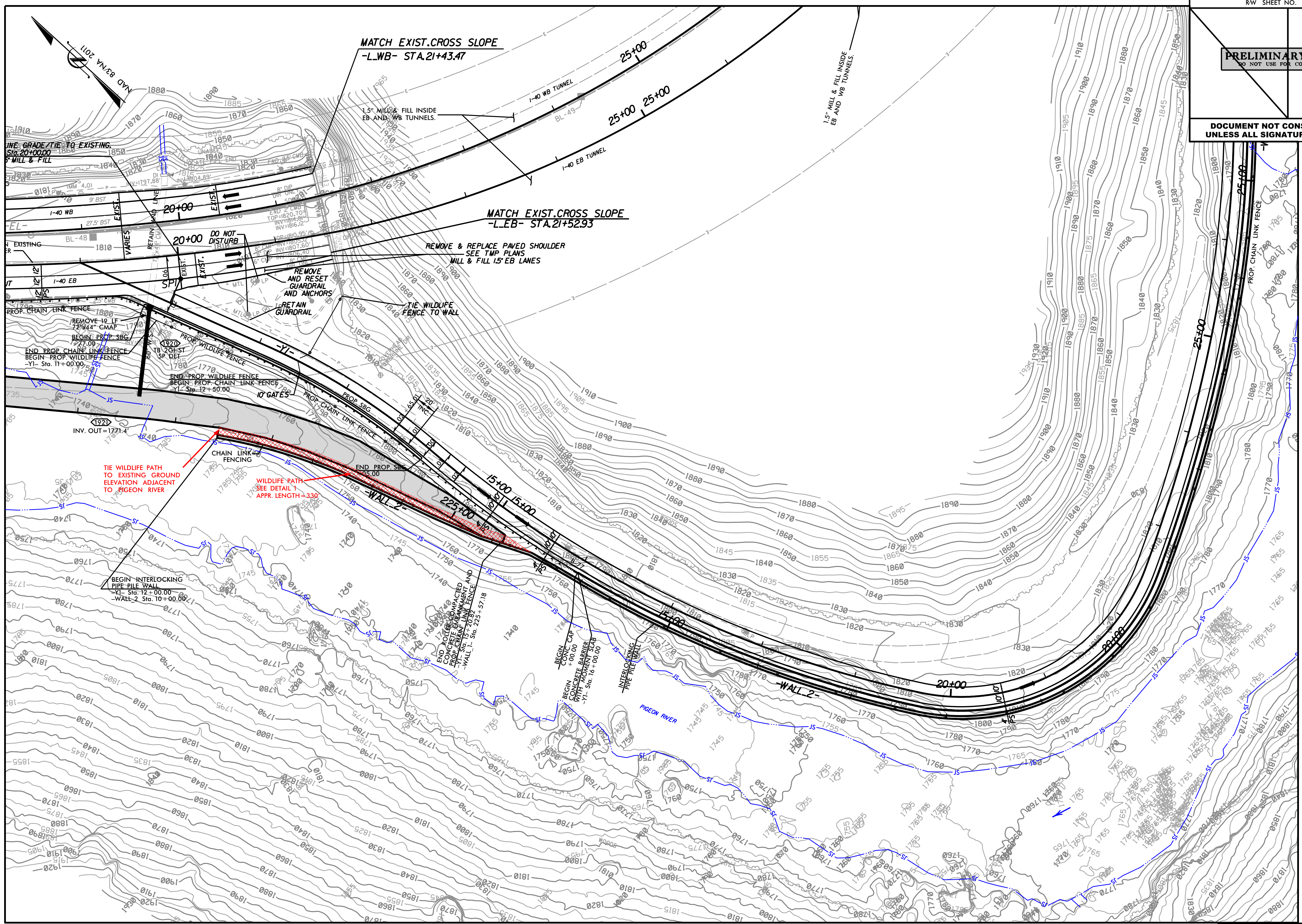
RK&K RUMMEL, KLEPPER & KAHL, LLP
8601 SIX FORKS ROAD, FORUM 1, SUITE 700
RALEIGH, NORTH CAROLINA 27615-3960
NC LICENSE NO. F-0112

MATTHEW COOK, P.E.
WATER RESOURCES ENGINEER



PROJECT REFERENCE NO.	SHEET NO.
1-40 PIGEON RIVER	WCS-2
R/W SHEET NO.	HYDRAULICS ENGINEER
PRELIMINARY PLANS DO NOT USE FOR CONSTRUCTION	
DOCUMENT NOT CONSIDERED FINAL UNLESS ALL SIGNATURES COMPLETED	



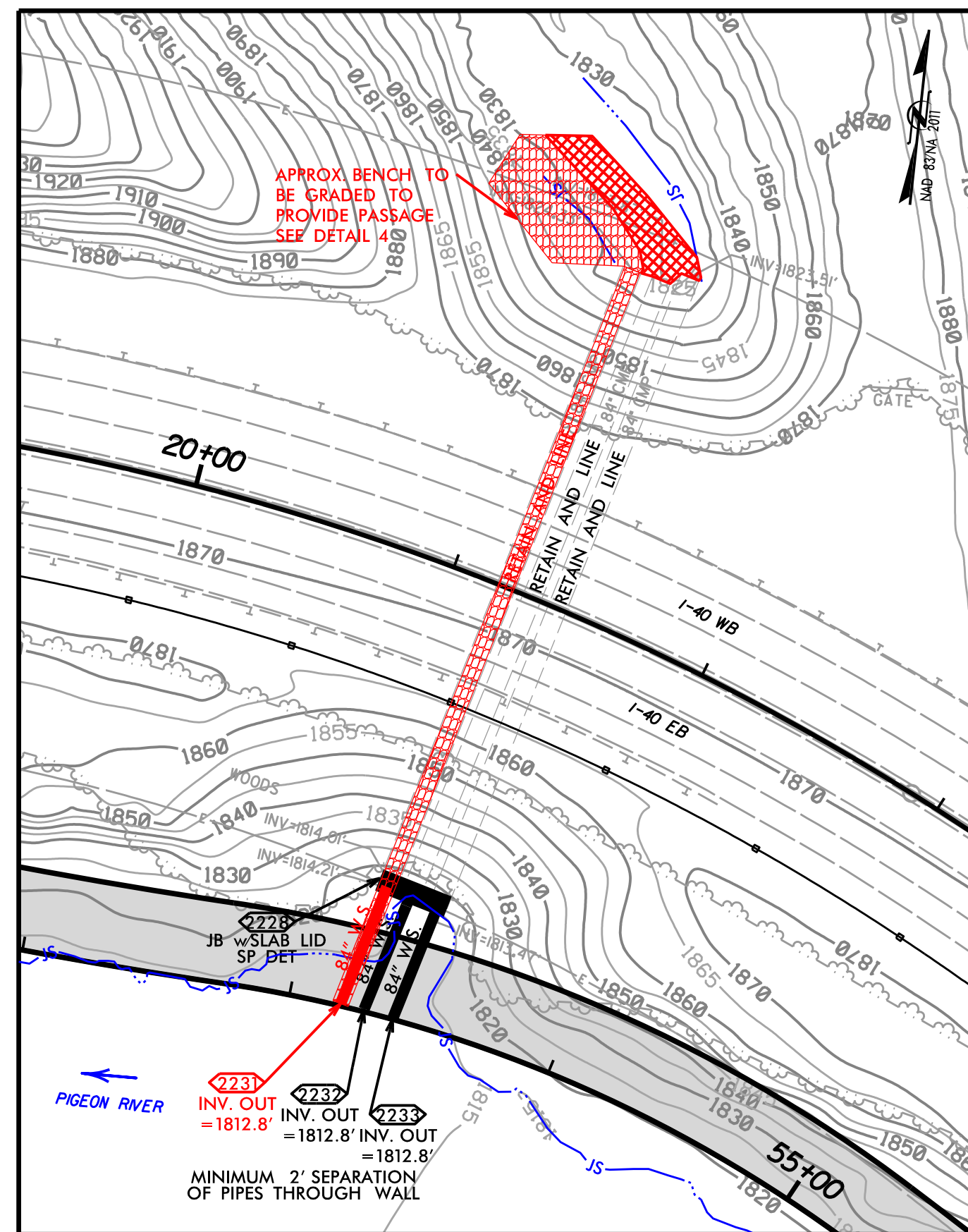


SITE 12
DOUBLE TUNNEL WILDLIFE PATH

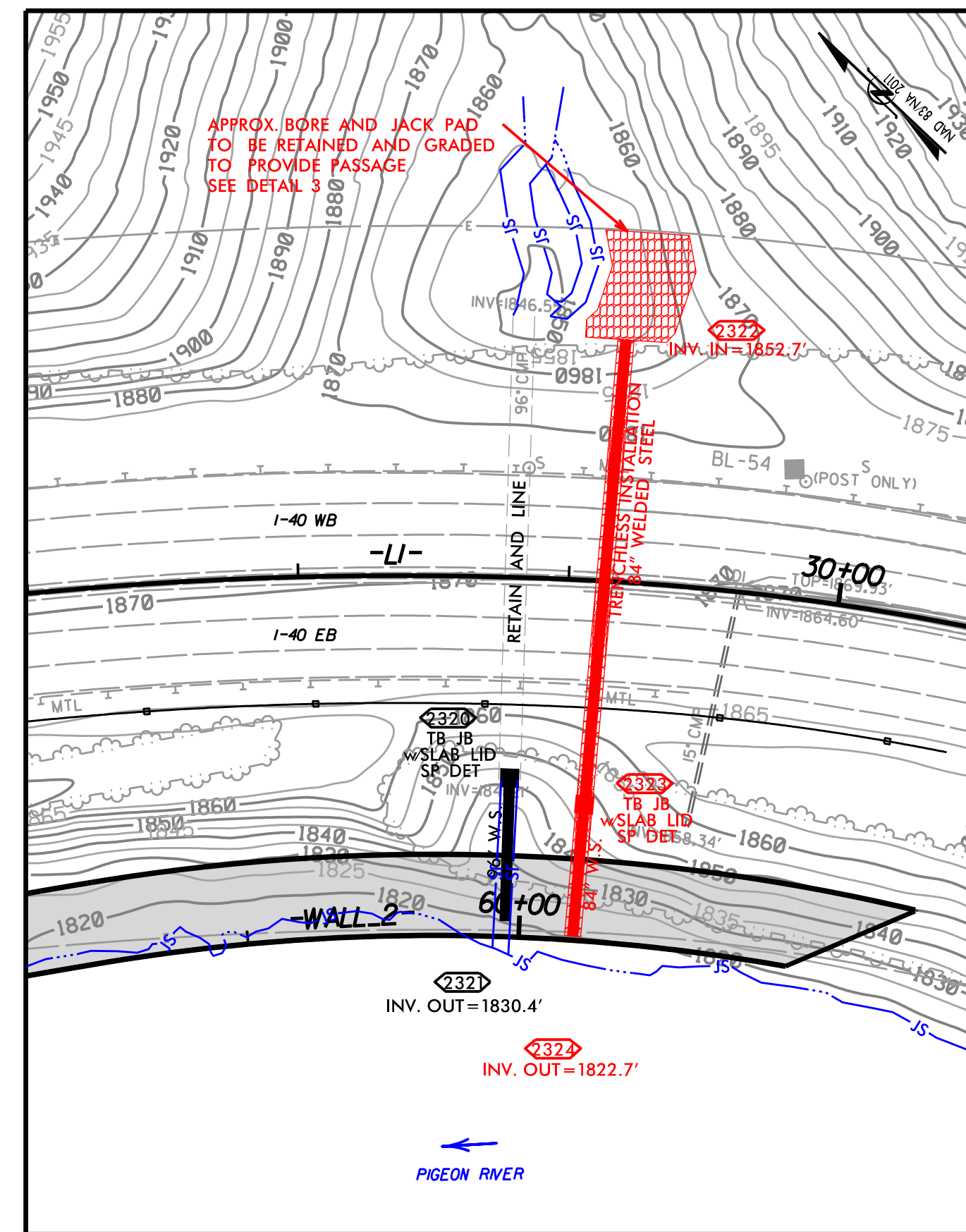
8/17/99

5/27/2026
 C:\work\p\kk\production\d0173853\1-40 Pigeon River_WCS_Site12.dgn
 MANAGER

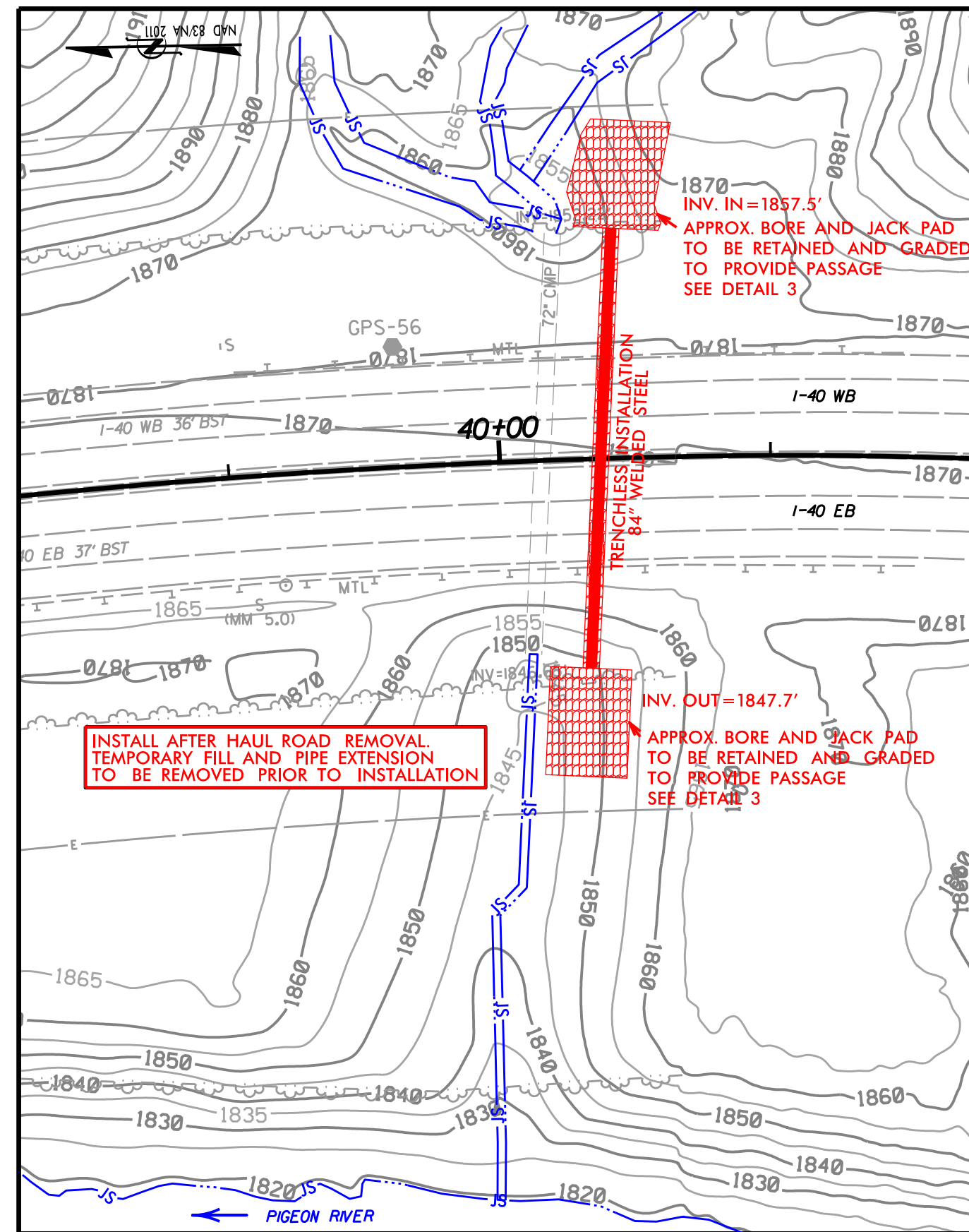
PROJECT REFERENCE NO.	SHEET NO.
I-40 PIGEON RIVER	WCS-4
RW SHEET NO.	HYDRAULICS ENGINEER
PRELIMINARY PLANS DO NOT USE FOR CONSTRUCTION	
DOCUMENT NOT CONSIDERED FINAL UNLESS ALL SIGNATURES COMPLETED	



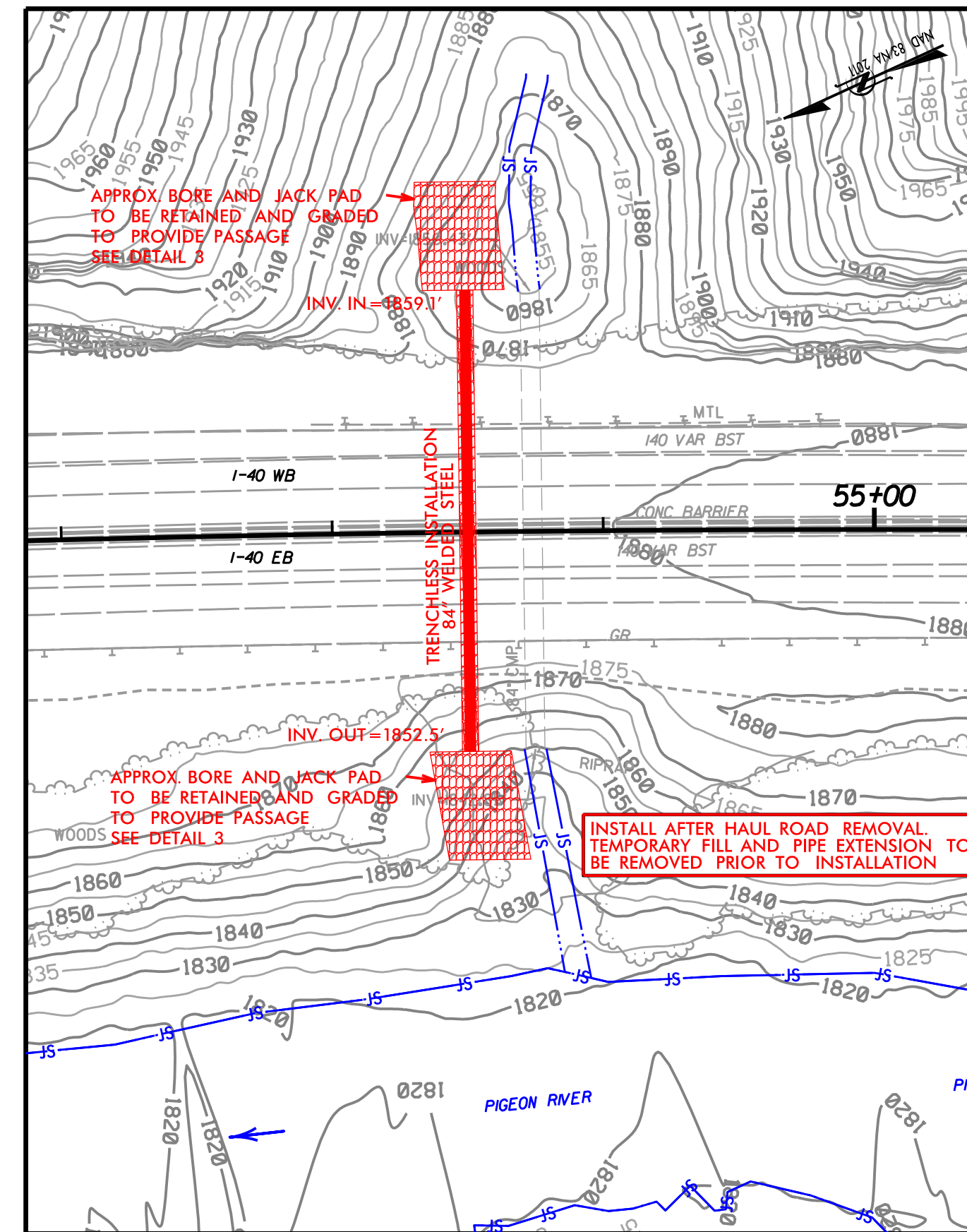
SITE II
GROUNDHOG CREEK CULVERTS



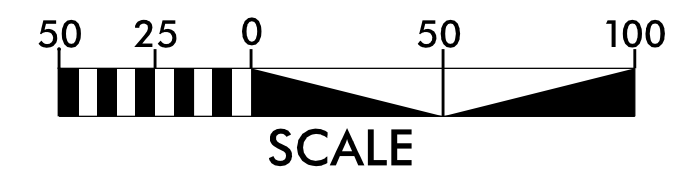
SITE II
RUBE ROCK BRANCH CULVERT



SITE II
TOM HALL BRANCH CULVERT



SITE II
WHITE OAK FLATS BRANCH CULVERT



RK&K
 P: (919) 878-9560
 8601 Six Forks Road, Forum 1, Suite 700
 Raleigh, North Carolina 27615-3960
 NC License No. E-0112

Engineers | Construction Managers | Planners | Scientists
 www.rkk.com
 Responsive People | Creative Solutions

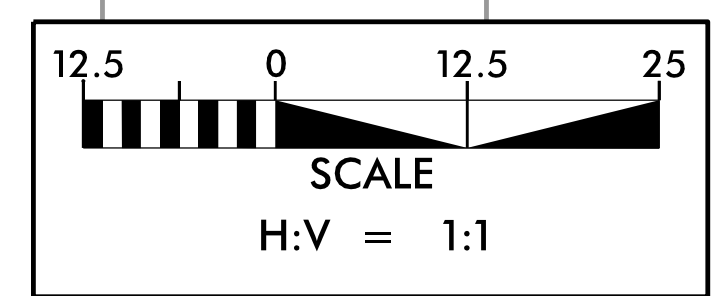
5/14/99
5/27/2006
C:\sw_work\p\production\0173853\1-40_PigeonRiver_WCS_GroundhogPrOf1.e.dgn

PROJECT REFERENCE NO. I-40 PIGEON RIVER	SHEET NO. WCS-4A
HYDRAULICS ENGINEER	
PRELIMINARY PLANS DO NOT USE FOR CONSTRUCTION	
DOCUMENT NOT CONSIDERED FINAL UNLESS ALL SIGNATURES COMPLETED	

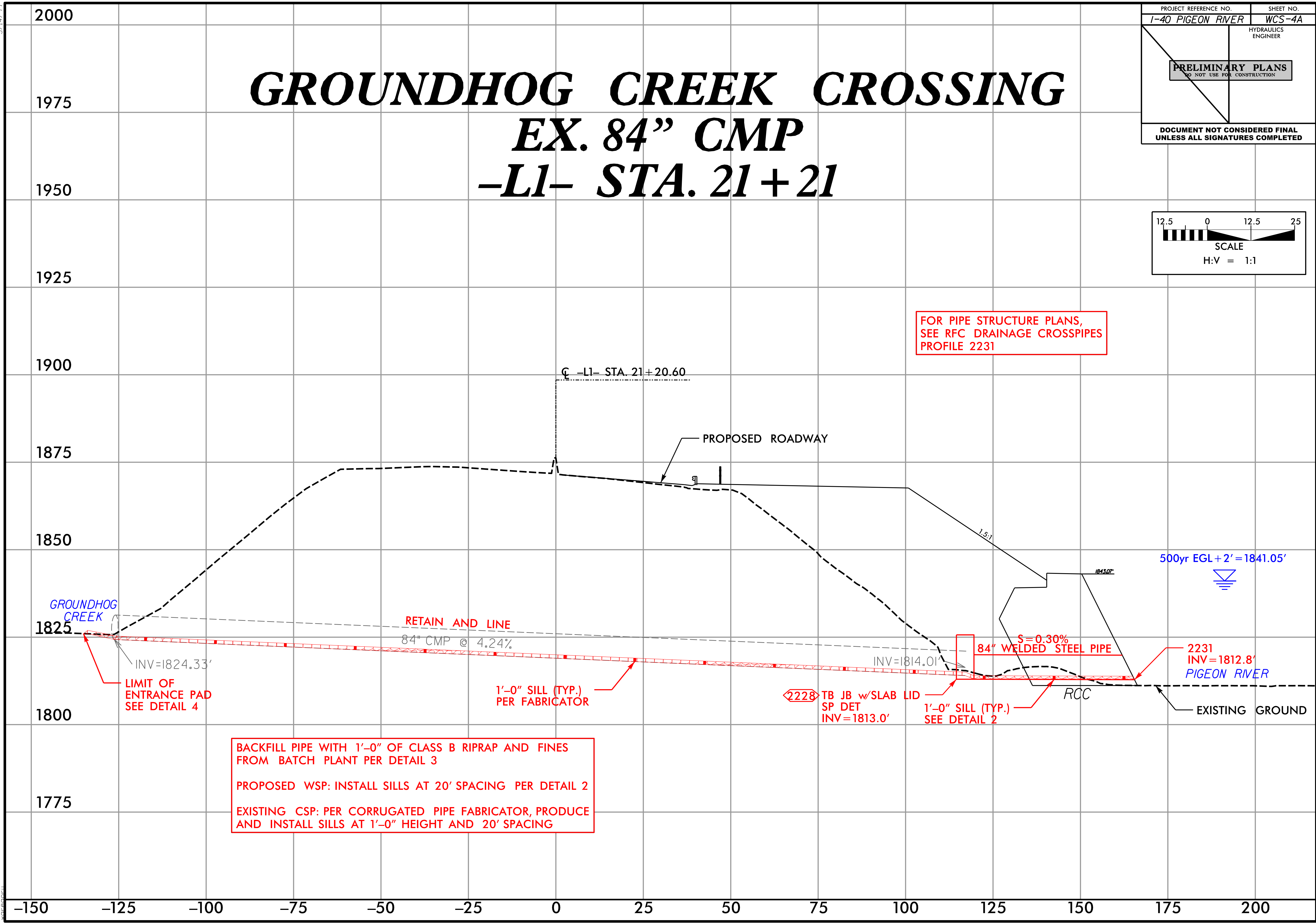
GROUNDHOG CREEK CROSSING

EX. 84" CMP

-L1- STA. 21+21



FOR PIPE STRUCTURE PLANS,
SEE RFC DRAINAGE CROSSPIPES
PROFILE 2231



BACKFILL PIPE WITH 1'-0" OF CLASS B RIPRAP AND FINES FROM BATCH PLANT PER DETAIL 3

PROPOSED WSP: INSTALL SILLS AT 20' SPACING PER DETAIL 2

EXISTING CSP: PER CORRUGATED PIPE FABRICATOR, PRODUCE AND INSTALL SILLS AT 1'-0" HEIGHT AND 20' SPACING

GROUNDHOG CREEK

INV=1824.33'
LIMIT OF ENTRANCE PAD
SEE DETAIL 4

RETAIN AND LINE
84" CMP @ 4.24%

1'-0" SILL (TYP.)
PER FABRICATOR

2228 TB JB w/SLAB LID
SP DET
INV=1813.0'

1'-0" SILL (TYP.)
SEE DETAIL 2

84" WELDED STEEL PIPE
S=0.30%

RCC

500yr EGL + 2' = 1841.05'



2231
INV=1812.8'
PIGEON RIVER

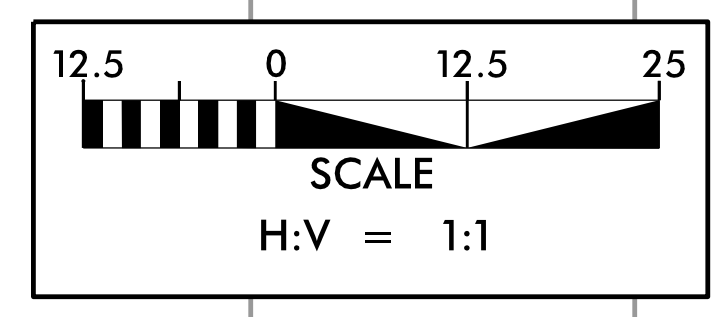
EXISTING GROUND

5/14/99
5/27/2006
C:\sw_work\p\production\0173853\1-40_PigeonRiver_WCS_RubeRockProf1.evdgn

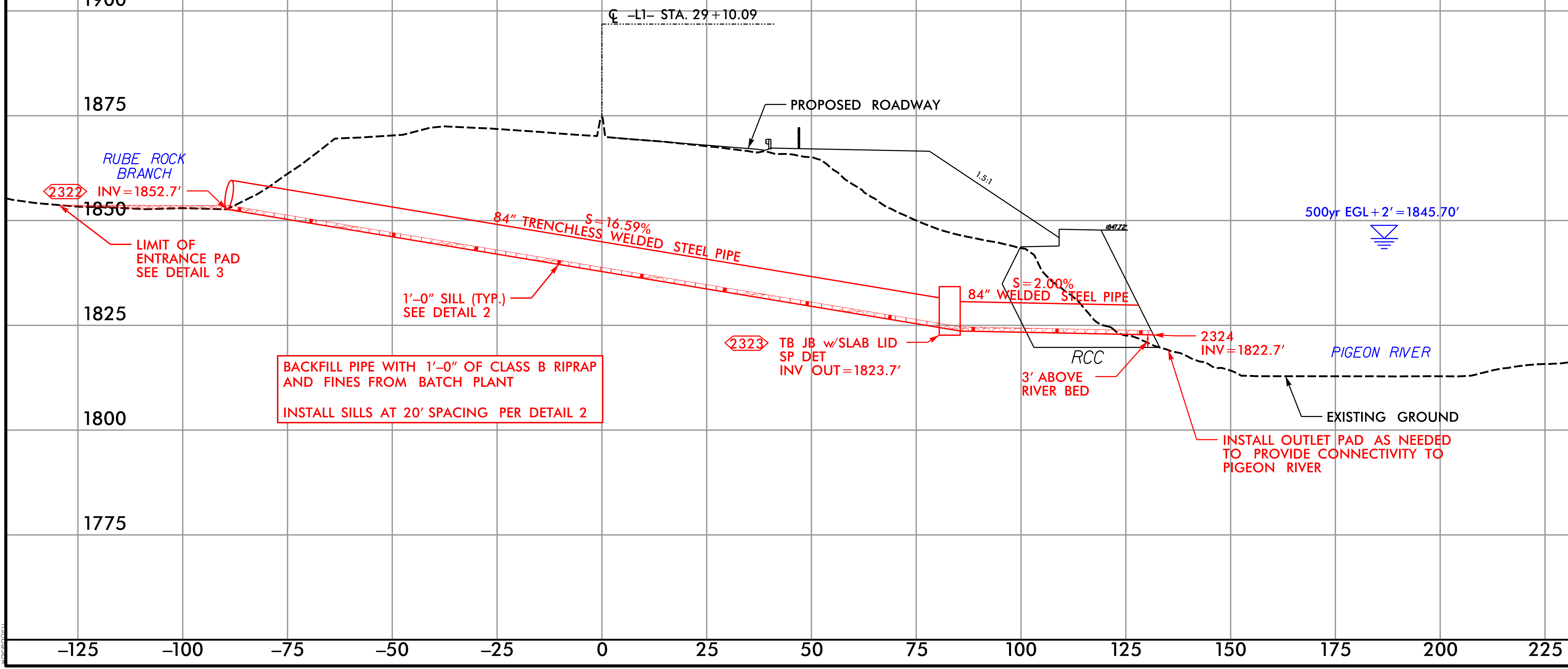
2000
1975
1950
1925
1900
1875
1850
1825
1800
1775

RUBE ROCK BRANCH CROSSING PROPOSED 84" W.S. -L1- STA. 29+10

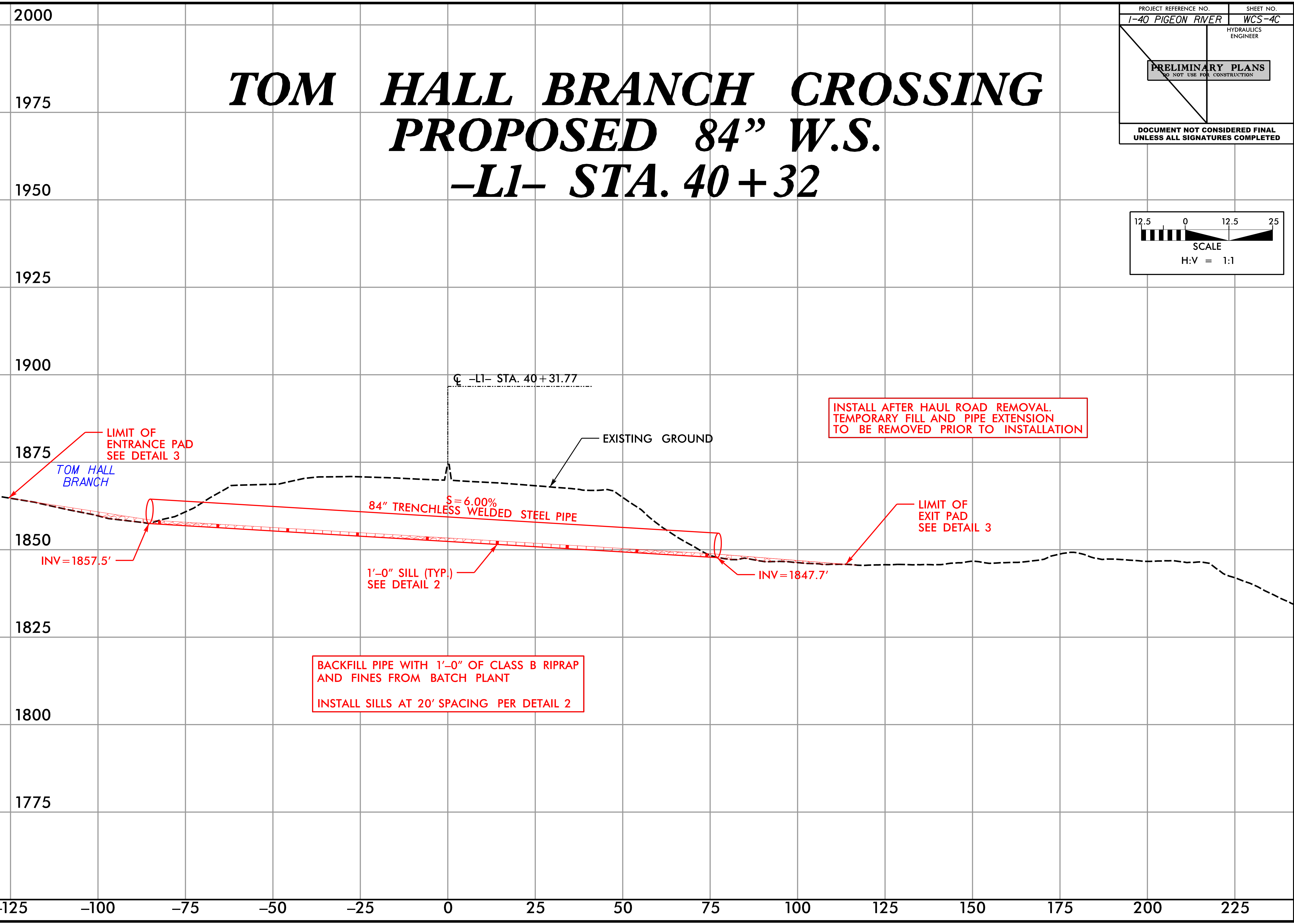
PROJECT REFERENCE NO. I-40 PIGEON RIVER	SHEET NO. WCS-4B
HYDRAULICS ENGINEER	
PRELIMINARY PLANS DO NOT USE FOR CONSTRUCTION	
DOCUMENT NOT CONSIDERED FINAL UNLESS ALL SIGNATURES COMPLETED	



FOR PIPE STRUCTURE PLANS,
SEE RFC DRAINAGE CROSSPIPES
PROFILE 2324



5/14/99
5/27/2006
C:\sw\working\production\0173853\1-40_PigeonRiver_WCS_TomHall\Prof\1.e.dgn



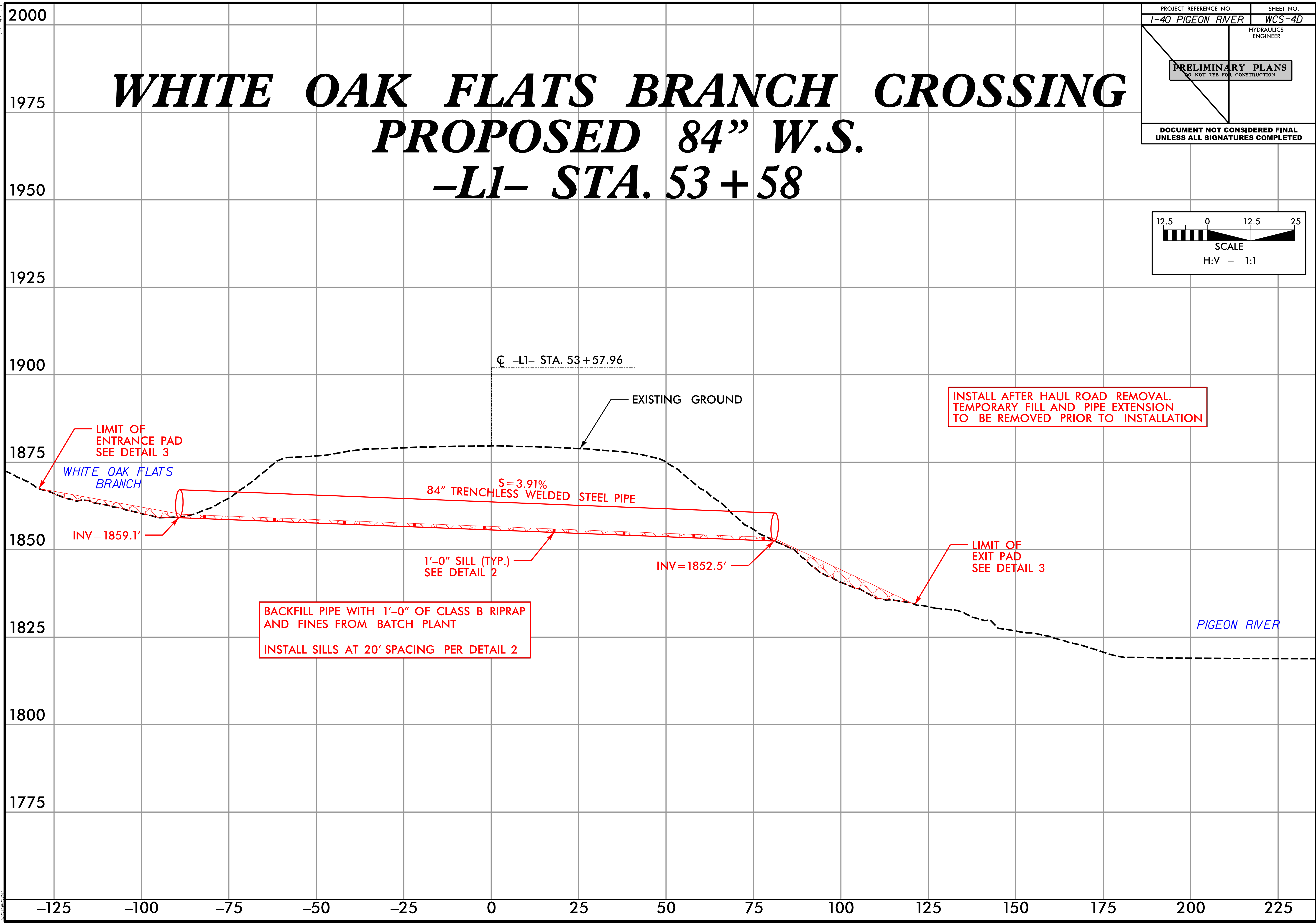
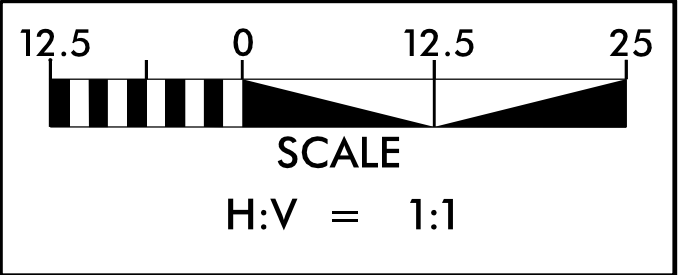
5/14/99
5/27/2006
C:\swack\proj\production\0173853\1-40_PigeonRiver_WCS_WhiteOakProrof1.e.dgn

PROJECT REFERENCE NO. I-40 PIGEON RIVER	SHEET NO. WCS-4D
HYDRAULICS ENGINEER	
PRELIMINARY PLANS DO NOT USE FOR CONSTRUCTION	
DOCUMENT NOT CONSIDERED FINAL UNLESS ALL SIGNATURES COMPLETED	

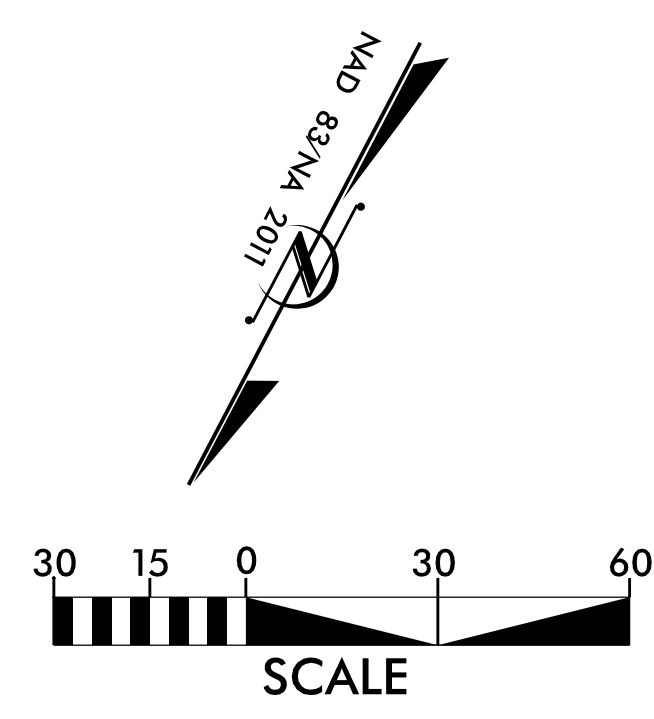
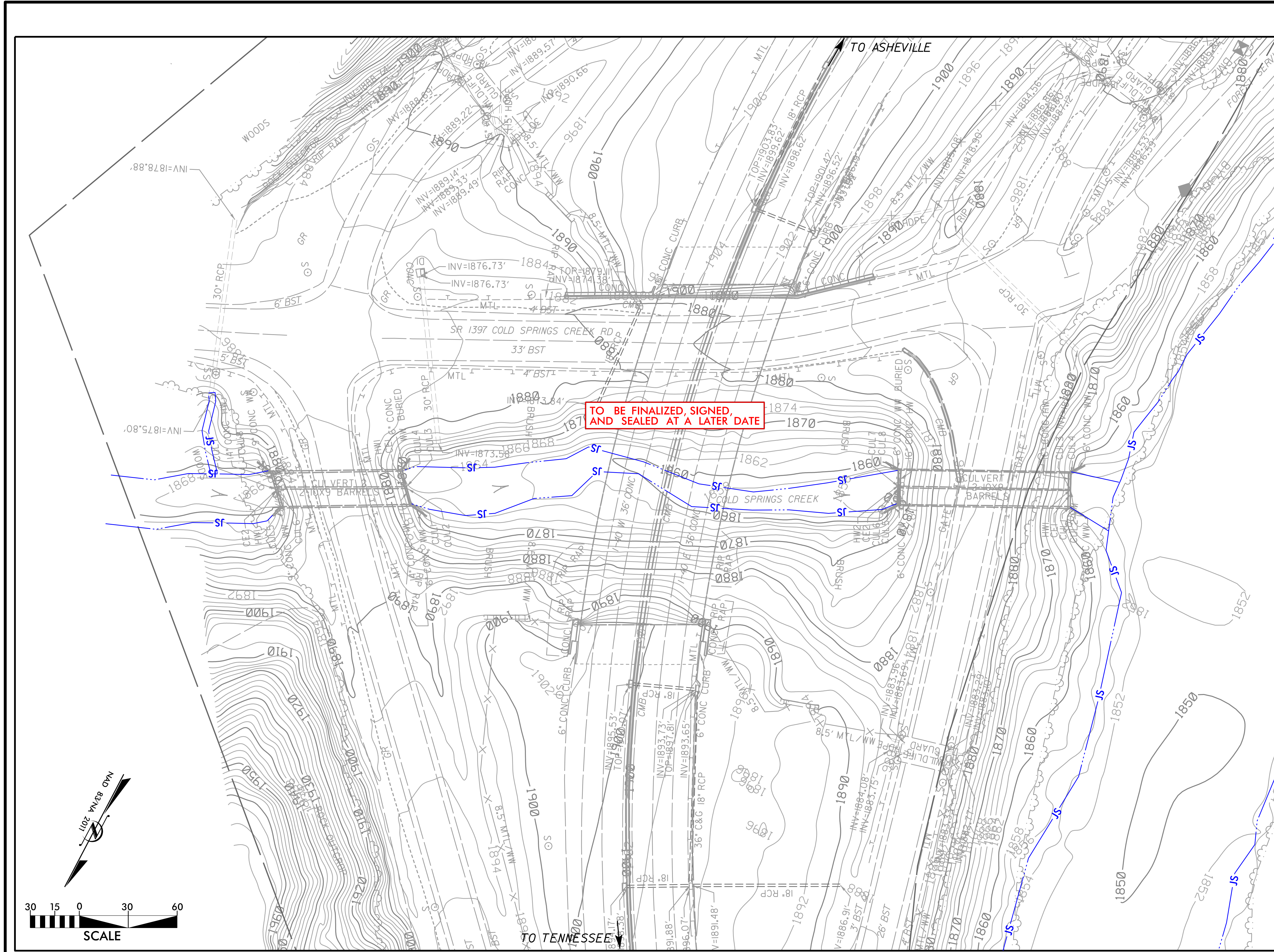
WHITE OAK FLATS BRANCH CROSSING

PROPOSED 84" W.S.

-L1- STA. 53+58



PROJECT REFERENCE NO.	SHEET NO.
1-40 PIGEON RIVER	WCS-5
RW SHEET NO.	HYDRAULICS ENGINEER
PRELIMINARY PLANS DO NOT USE FOR CONSTRUCTION	
DOCUMENT NOT CONSIDERED FINAL UNLESS ALL SIGNATURES COMPLETED	



SITE 10
COLD SPRINGS CREEK CULVERTS

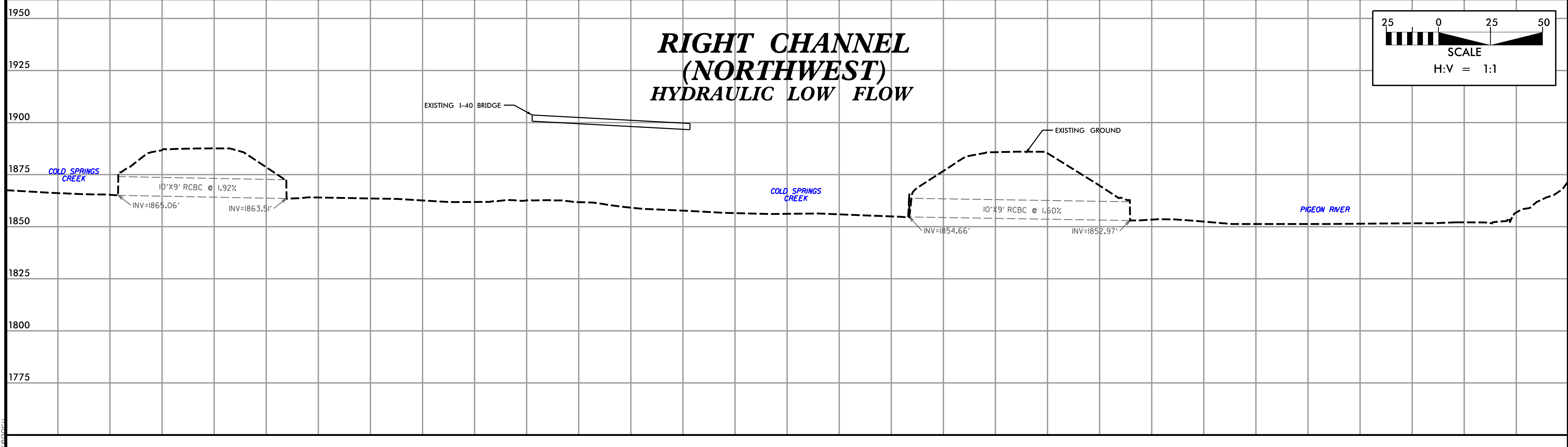
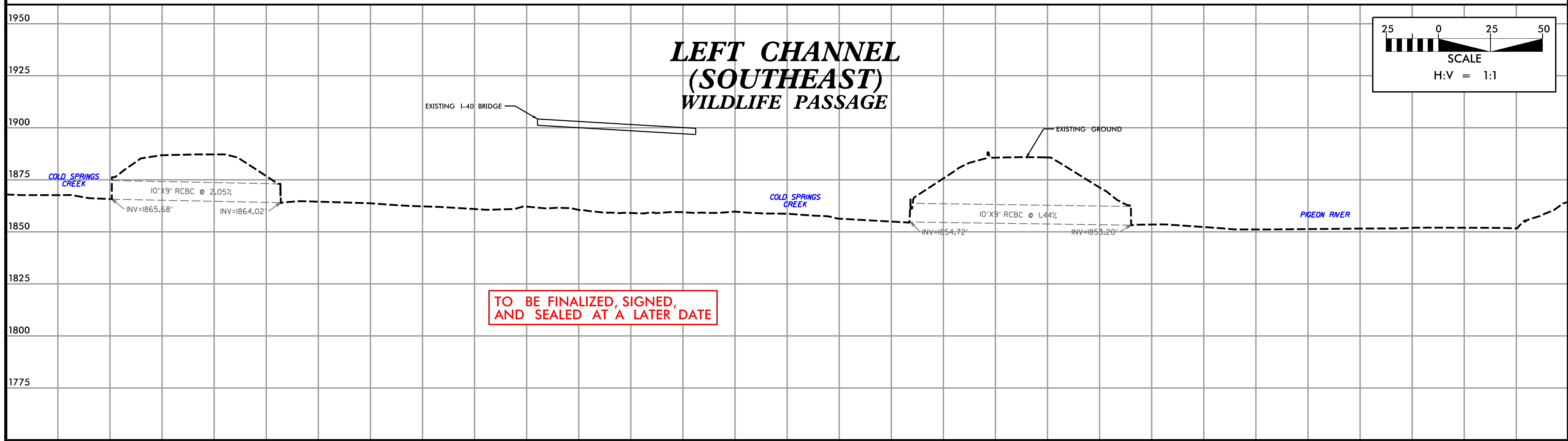
RK&K
 P: (919) 878-9560
 8601 Six Forks Road, Forum 1, Suite 700
 Raleigh, North Carolina 27615-3960
 NC License No. E-0112
 Engineers | Construction Managers | Planners | Scientists
 www.rk&k.com
 Responsive People | Creative Solutions

8/17/99
 5/27/2006
 C:\swworking\rk\production\d0173853\1-40 Pigeon River_WCS_Site10.dgn
 MWD/STP

5/14/99

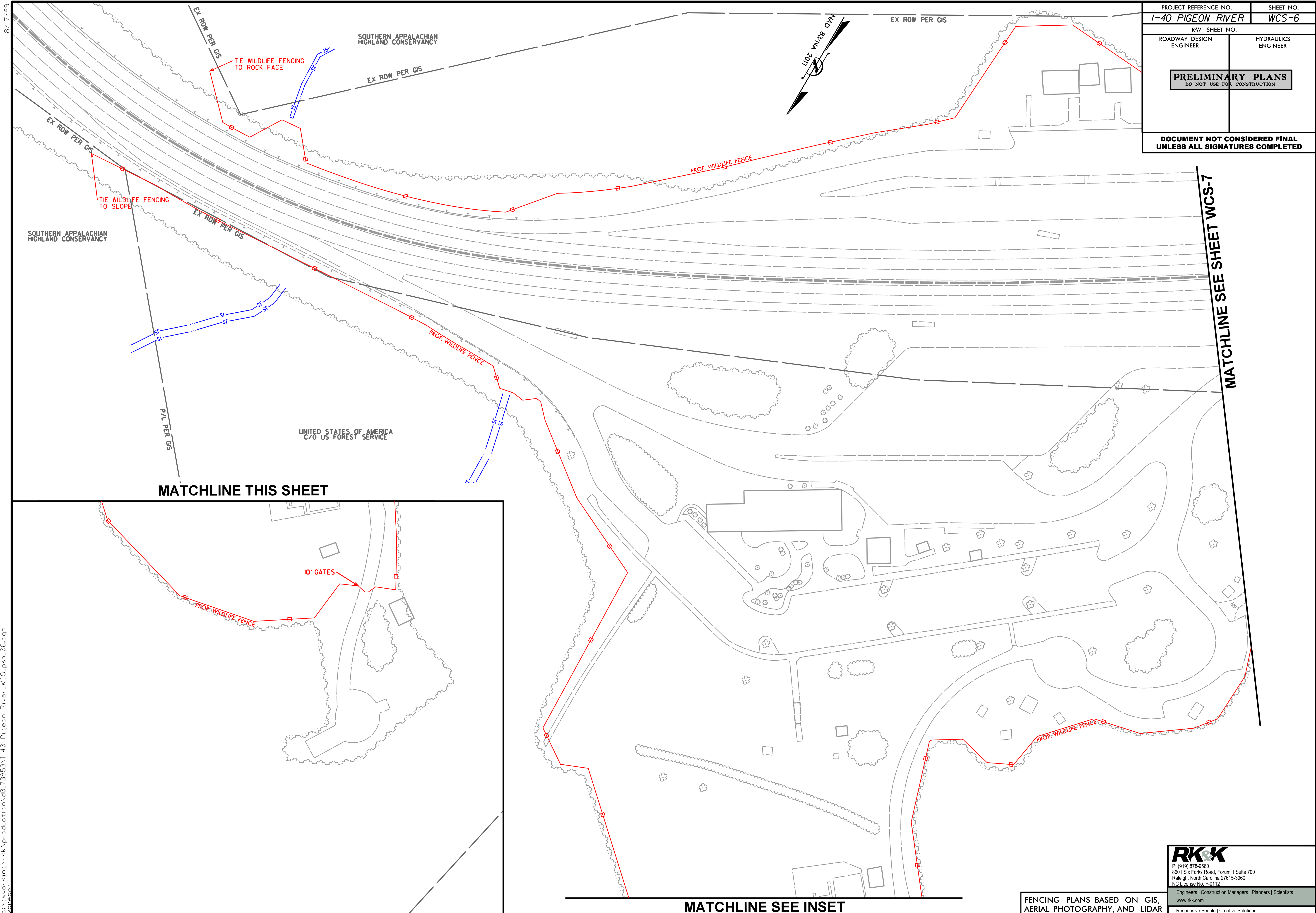
SITE 10: COLD SPRINGS CREEK CULVERTS DOUBLE RCBC

PROJECT REFERENCE NO. I-40 PIGEON RIVER	SHEET NO. WCS-5A
HYDRAULICS ENGINEER	
PRELIMINARY PLANS DO NOT USE FOR CONSTRUCTION	
DOCUMENT NOT CONSIDERED FINAL UNLESS ALL SIGNATURES COMPLETED	



5/27/2006
C:\swa\working\production\01738531\I-40_PigeonRiver_WCS_ColdSprings_Prof11.es.dgn

PROJECT REFERENCE NO. I-40 PIGEON RIVER	SHEET NO. WCS-6
RW SHEET NO.	
ROADWAY DESIGN ENGINEER	HYDRAULICS ENGINEER
PRELIMINARY PLANS DO NOT USE FOR CONSTRUCTION	
DOCUMENT NOT CONSIDERED FINAL UNLESS ALL SIGNATURES COMPLETED	



MATCHLINE THIS SHEET

MATCHLINE SEE SHEET WCS-7



MATCHLINE SEE INSET

FENCING PLANS BASED ON GIS, AERIAL PHOTOGRAPHY, AND LIDAR

RK&K
 P: (919) 878-9560
 8601 Six Forks Road, Forum 1, Suite 700
 Raleigh, North Carolina 27615-3960
 NC License No. F-0117
 Engineers | Construction Managers | Planners | Scientists
 www.rkk.com
 Responsive People | Creative Solutions

8/17/99
 5/27/2006
 C:\working\york\production\0173853\I-40_Pigeon_River_WCS_psh_06.dgn
 M0000001

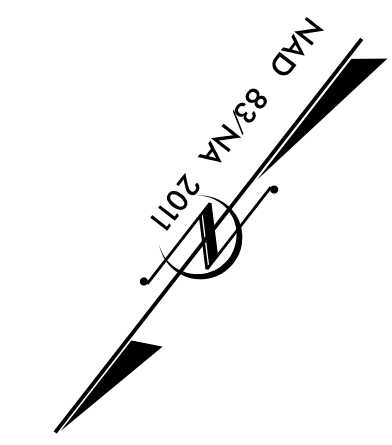
8/17/99

SOUTHERN APPALACHIAN
HIGHLAND CONSERVANCY

EX ROW PER GIS

EX ROW PER GIS

PROJECT REFERENCE NO. I-40 PIGEON RIVER	SHEET NO. WCS-7
RW SHEET NO.	
ROADWAY DESIGN ENGINEER	HYDRAULICS ENGINEER
PRELIMINARY PLANS DO NOT USE FOR CONSTRUCTION	
DOCUMENT NOT CONSIDERED FINAL UNLESS ALL SIGNATURES COMPLETED	



MATCHLINE SEE SHEET WCS-6

MATCHLINE SEE SHEET WCS-8

PROP. WILDLIFE FENCE

PROP. WILDLIFE FENCE

EX ROW PER GIS

EX ROW PER GIS

EX ROW PER GIS

UNITED STATES OF AMERICA
C/O US FOREST SERVICE

SUTTON, ANTHONY MARTIN
BROWNING, SABRINA SUTTON

SMITH, JERALDENE L

HEAD, BOBBY DALE

HEAD, BOBBY DALE

P/L PER GIS

P/L PER GIS

P/L PER GIS

P/L PER GIS

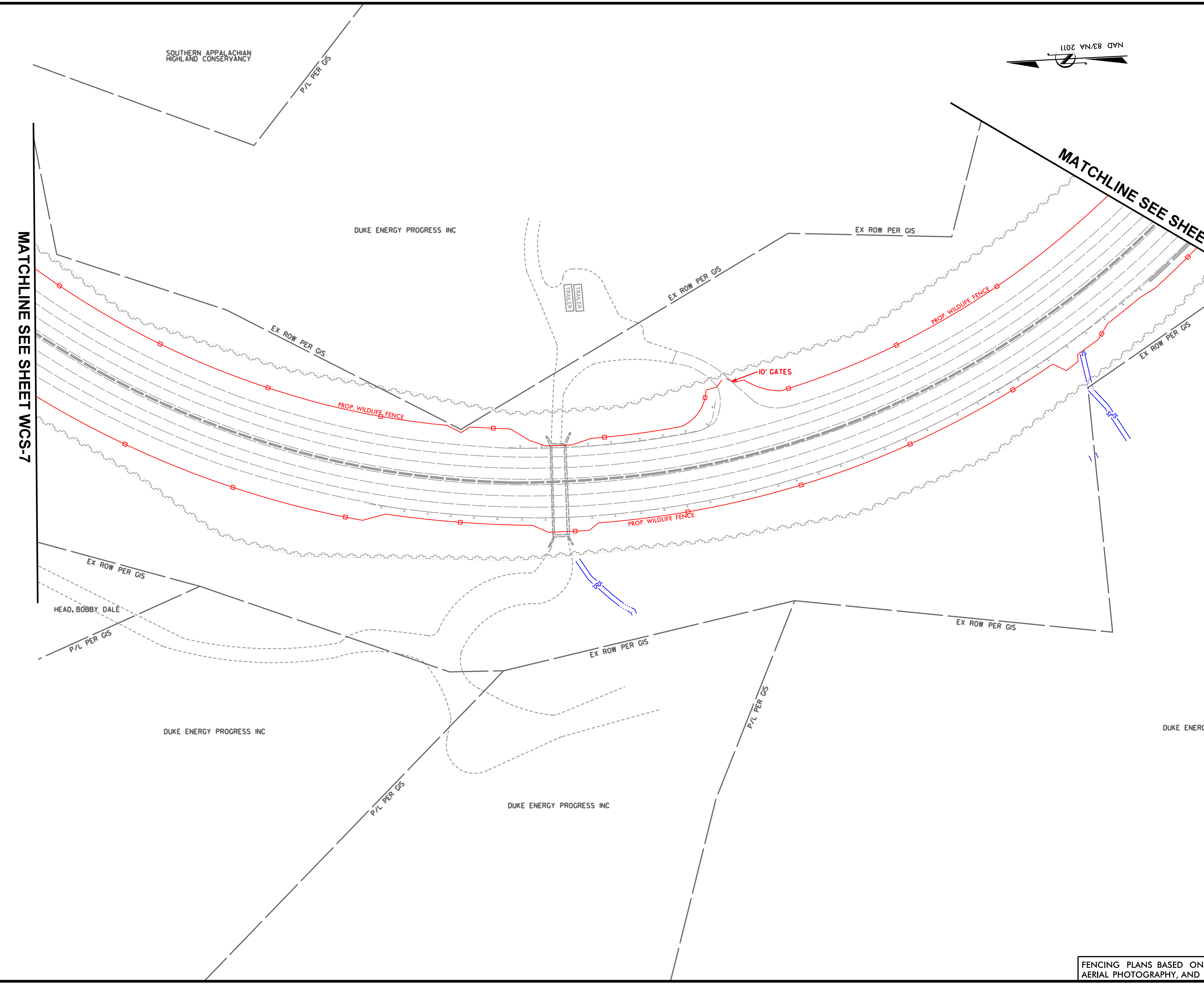
5/27/2006
C:\working\york\production\0173853\I-40 Pigeon River_WCS_psh_07.dgn
MORNINGSTAR

RK&K
 P: (919) 878-9560
 8601 Six Forks Road, Forum 1, Suite 700
 Raleigh, North Carolina 27615-3960
 NC License No. E-0117

Engineers | Construction Managers | Planners | Scientists
 www.rkk.com
 Responsive People | Creative Solutions

FENCING PLANS BASED ON GIS,
AERIAL PHOTOGRAPHY, AND LIDAR

8/17/99
5/27/2006
C:\sw_work\p\kk\production\0173853\1-40_Pigeon_River_WCS_psh_08.dgn
MORISAPRIL



PROJECT REFERENCE NO. 1-40 PIGEON RIVER	SHEET NO. WCS-8
RW SHEET NO.	
ROADWAY DESIGN ENGINEER	HYDRAULICS ENGINEER
PRELIMINARY PLANS DO NOT USE FOR CONSTRUCTION	
DOCUMENT NOT CONSIDERED FINAL UNLESS ALL SIGNATURES COMPLETED	

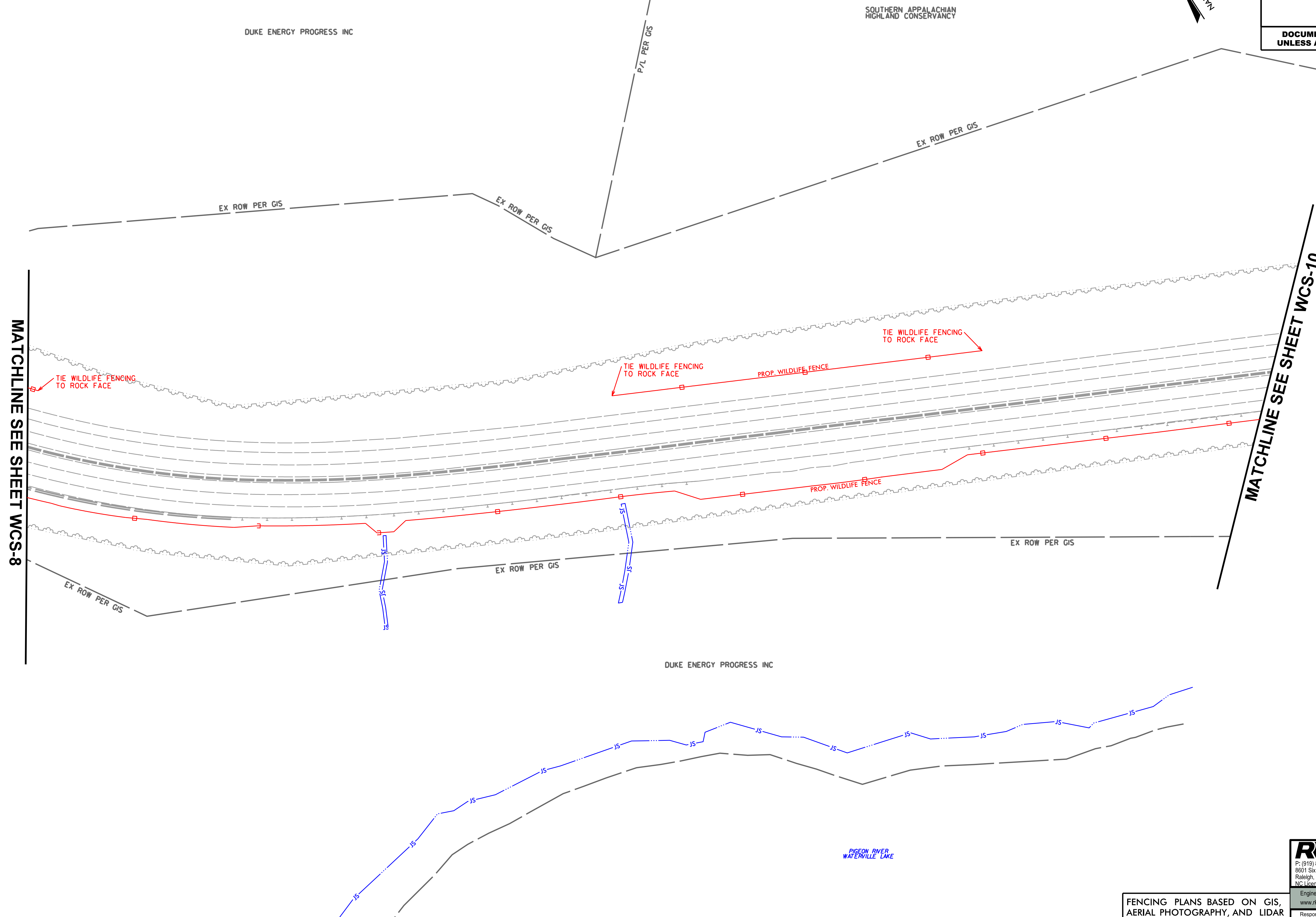
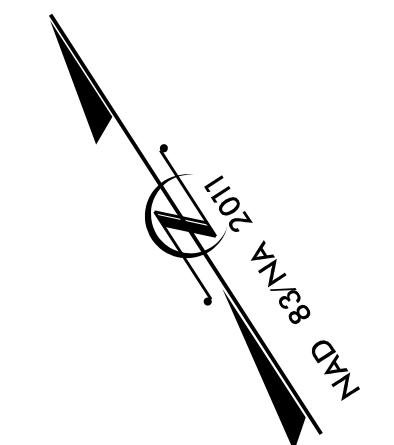
RK&K
P: (919) 878-9560
8601 Six Forks Road, Forum 1, Suite 700
Raleigh, North Carolina 27615-3960
NC License No. F-0117

Engineers | Construction Managers | Planners | Scientists
www.rkk.com
Responsive People | Creative Solutions

FENCING PLANS BASED ON GIS,
AERIAL PHOTOGRAPHY, AND LIDAR

8/17/99

PROJECT REFERENCE NO. I-40 PIGEON RIVER	SHEET NO. WCS-9
RW SHEET NO.	
ROADWAY DESIGN ENGINEER	HYDRAULICS ENGINEER
PRELIMINARY PLANS DO NOT USE FOR CONSTRUCTION	
DOCUMENT NOT CONSIDERED FINAL UNLESS ALL SIGNATURES COMPLETED	



5/27/2006
 C:\work\p\y\kk\production\0173853\I-40_Pigeon_River_WCS_psh_09.dgn
 MARIAPRIL

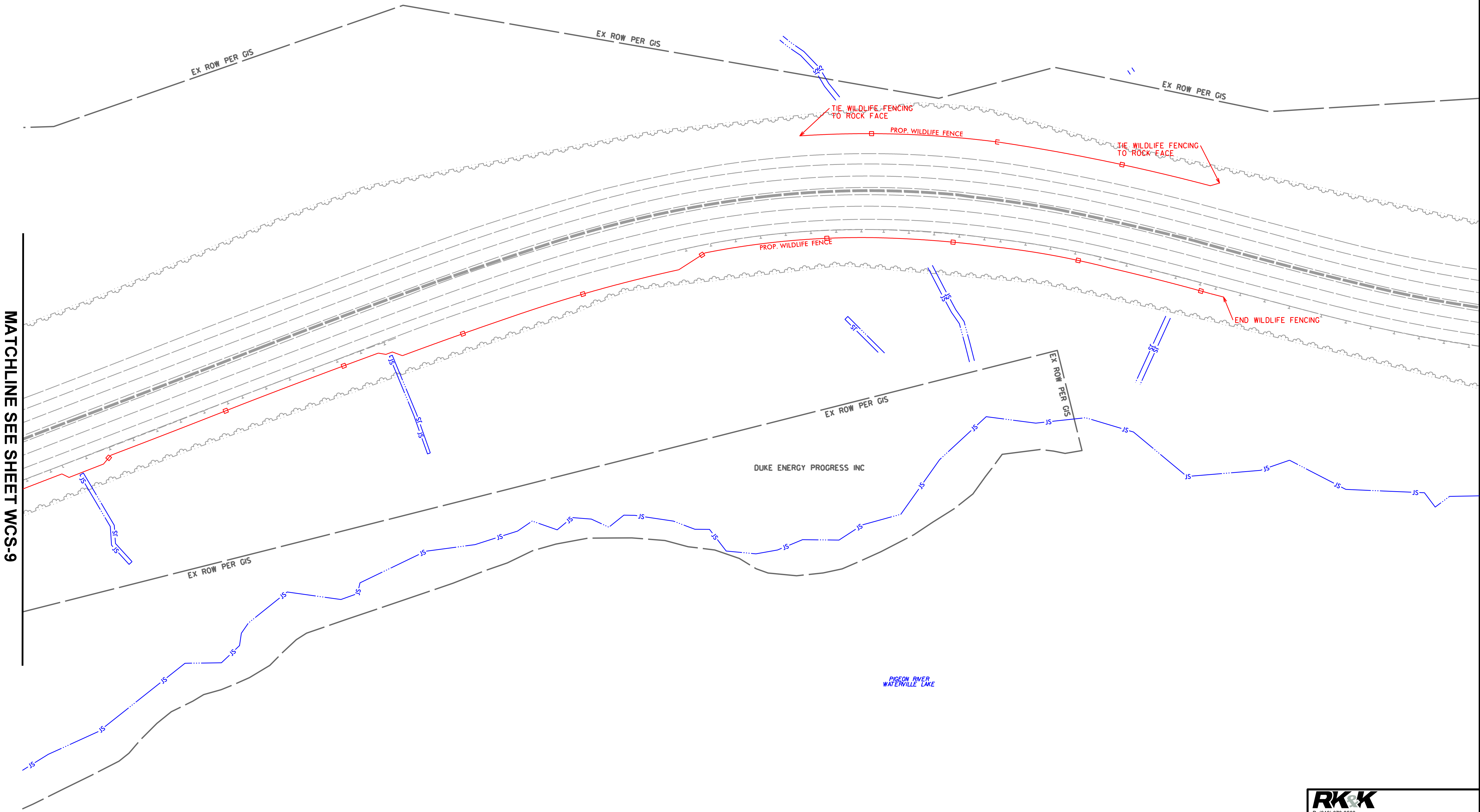
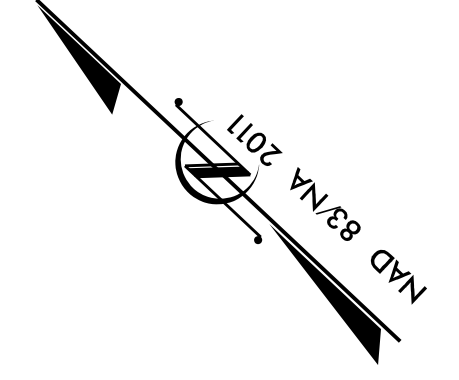
RK&K
 P: (919) 878-9560
 8601 Six Forks Road, Forum 1, Suite 700
 Raleigh, North Carolina 27615-3960
 NC License No. E-0117

Engineers | Construction Managers | Planners | Scientists
 www.rkk.com
 Responsive People | Creative Solutions

FENCING PLANS BASED ON GIS,
 AERIAL PHOTOGRAPHY, AND LIDAR

8/17/99

PROJECT REFERENCE NO. I-40 PIGEON RIVER	SHEET NO. WCS-10
RW SHEET NO.	
ROADWAY DESIGN ENGINEER	HYDRAULICS ENGINEER
PRELIMINARY PLANS DO NOT USE FOR CONSTRUCTION	
DOCUMENT NOT CONSIDERED FINAL UNLESS ALL SIGNATURES COMPLETED	



MATCHLINE SEE SHEET WCS 9

E:\27\2006
C:\work\p\kk\production\0173853\I-40_Pigeon_River_WCS_psh_10.dgn
10/17/2006

RK&K
 P: (919) 878-9560
 8601 Six Forks Road, Forum 1, Suite 700
 Raleigh, North Carolina 27615-3960
 NC License No. E-0117

Engineers | Construction Managers | Planners | Scientists
 www.rkk.com
 Responsive People | Creative Solutions

FENCING PLANS BASED ON GIS,
AERIAL PHOTOGRAPHY, AND LIDAR