



STATE OF NORTH CAROLINA
DEPARTMENT OF TRANSPORTATION

BEVERLY EAVES PERDUE
GOVERNOR

EUGENE A. CONTI, JR.
SECRETARY

September 17, 2012

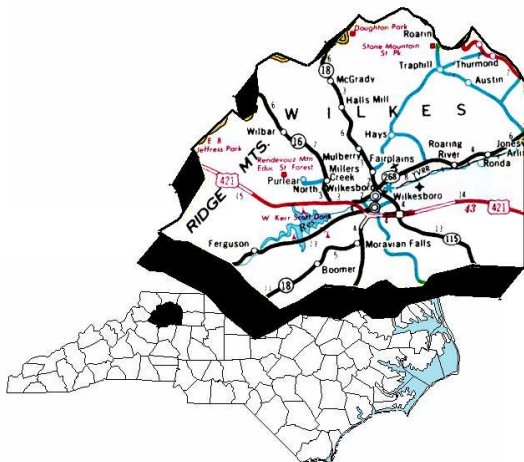
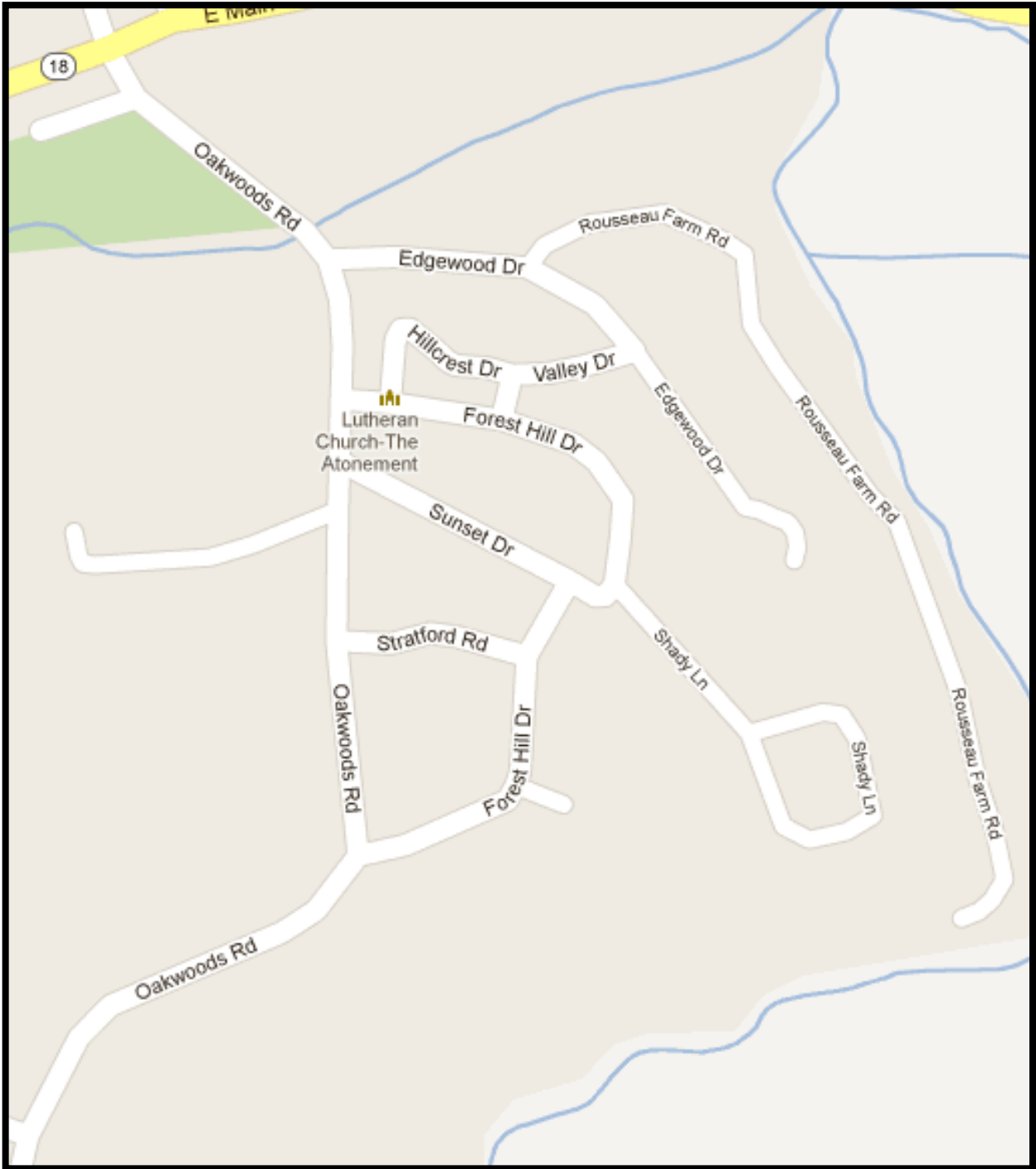
MEMORANDUM TO: Ed Lewis
PDEA - Public Involvement and Community Studies


FROM: *Tracy Walter*
PDEA – Bridge Replacement Section

SUBJECT: Request for Mailing Labels only for TIP No. **B-4676**
Replacement of Bridge #29 over Cub Creek, Wilkes County,
Division *eleven*

This is a request for mailing labels to be generated for TIP No. **B-4676** to be used to distribute a newsletter. Please see attached map for more details.

Attachments:



| | |
|---|---|
|  | <p>North Carolina Department of transportation Division of Highways PROJECT DEVELOPMENT & ENVIRONMENTAL ANALYSIS UNIT</p> |
| <p>WILKES COUNTY <i>Replace Bridge No. 29 on SR 1001</i> OVER CUB CREEK B-4676</p> | |
| <p>Mailing list area</p> | |