



STATE OF NORTH CAROLINA
DEPARTMENT OF TRANSPORTATION

MICHAEL F. EASLEY
GOVERNOR

LYNDO TIPPETT
SECRETARY

January 12, 2005

MEMORANDUM TO: Mr. H. Allen Pope, P.E.
Division 3 Engineer

FROM: Philip S. Harris, III, P.E., Manager *PHS*
Office of the Natural Environment
Project Development and
Environmental Analysis Branch

SUBJECT: Onslow County, Replace Bridge No. 3 over Little Northeast
Creek on SR 1423 (Old Thirty Rd.) and roadway improvements
on R 1423 from SR 1411 to SR 1413; State Project No.
8.2261201; TIP Number B-3682/W-3413.

Please accept the attached permit drawings that were inadvertently omitted from the NWP 23 that was distributed January 4, 2005. The drawings attached to the permit application dated November 29, 2004 should have been attached to the NWP 23 sent out January 4, 2005. However, drawings dated October 12, 2004 were attached to the permit when it was distributed. The permit application that was approved by the ACOE dated November 29, 2004 had the correct drawings and the referenced project is permitted for activities reflected on the November drawings.

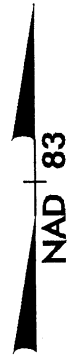
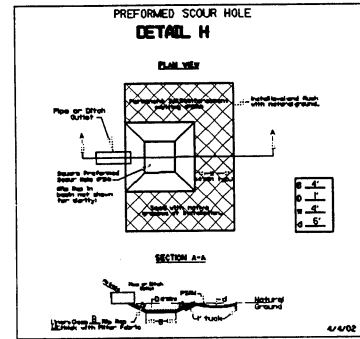
PSH/clk

Attachment

cc: Mr. Art McMillan, P.E.
Mr. Omar Sultan
Mr. Jay Bennett, P.E.
Mr. David Chang, P.E.
Mr. Randy Garris, P.E.
Mr. Greg Perfetti, P.E.
Mr. Njoroge Wainaina
Mr. Mark Staley
Mr. John F. Sullivan, III, FHWA
Mr. Mason Herndon, Division 3 Environmental Officer

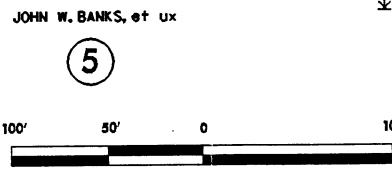
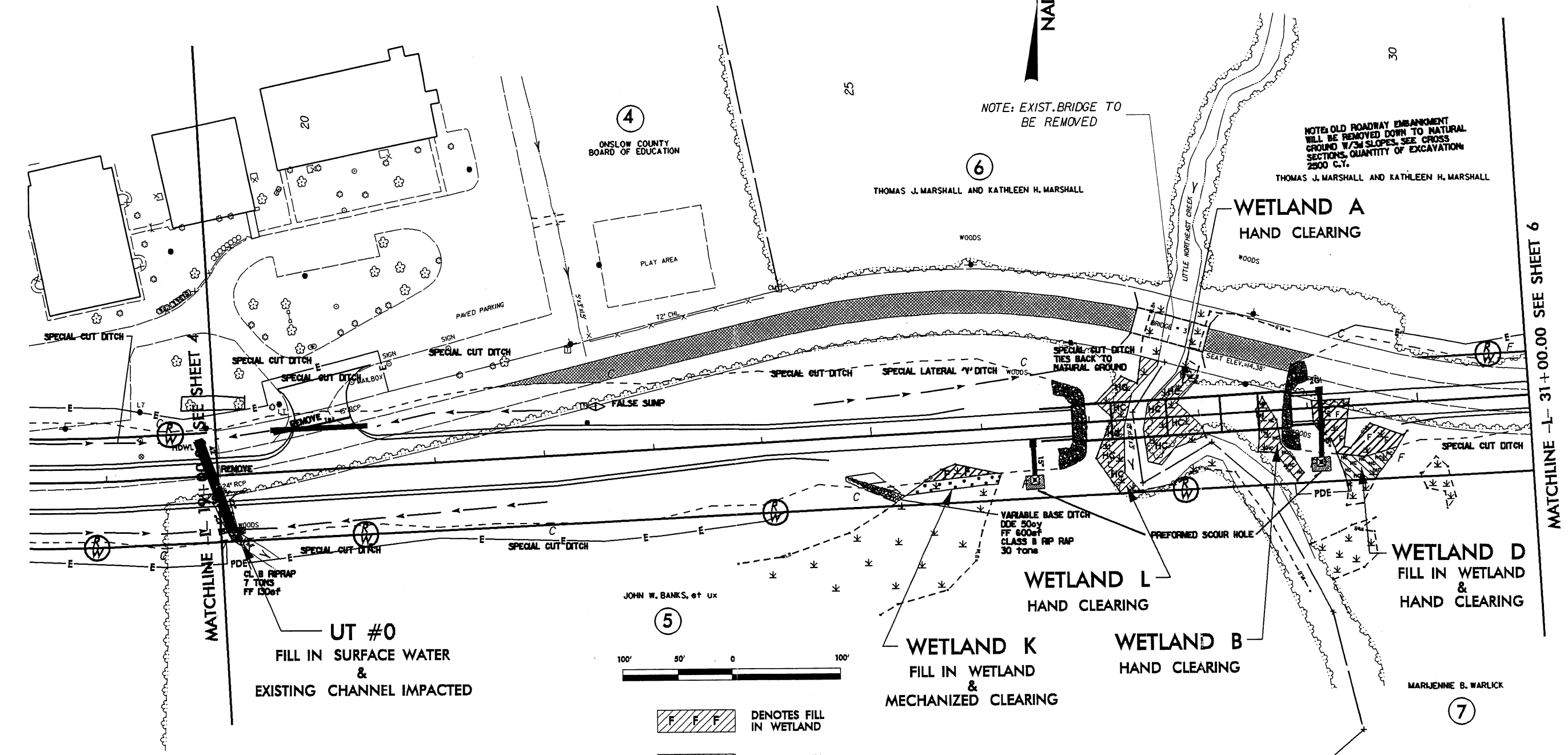
8/17/99

PROJECT REFERENCE NO. B-3682 & W-3413	SHEET NO. 5
HW SHEET NO.	
ROADWAY DESIGN ENGINEER	HYDRAULICS ENGINEER
PRELIMINARY PLANS DO NOT USE FOR CONSTRUCTION	



- PROP. PAINTED ISLAND.
SEE TRAFFIC CONTROL PLANS
- PAVEMENT REMOVAL & OBLITERATION

REVISIONS



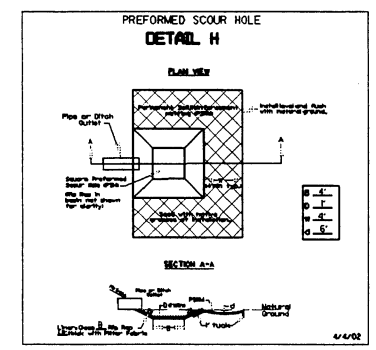
- DENOTES FILL IN WETLAND
- DENOTES FILL IN SURFACE WATER
- DENOTES MECHANIZED CLEARING
- DENOTES HAND CLEARING

18-NOV-2004 13:42
 F:\hydr-eu-1\cadd\permits\3682p-2.psh
 m.c.h.

MATCHLINE -L- 31+00.00 SEE SHEET 6

8/17/99

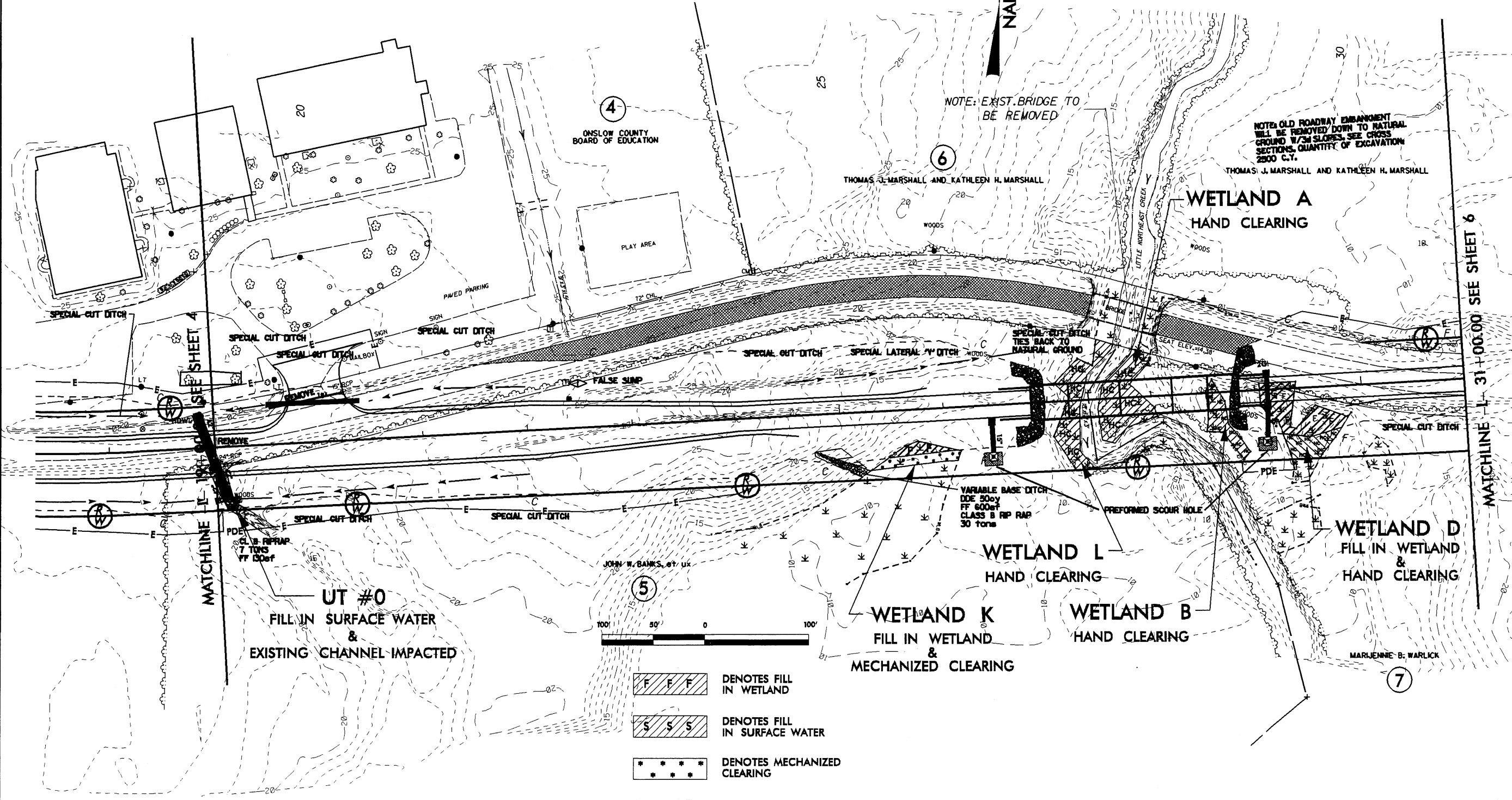
PROJECT REFERENCE NO. B-3682 & W-3413	SHEET NO. 5A
RW SHEET NO.	
ROADWAY DESIGN ENGINEER	HYDRAULICS ENGINEER
PRELIMINARY PLANS DO NOT USE FOR CONSTRUCTION	



NAD 83

- PROP. PAINTED ISLAND. SEE TRAFFIC CONTROL PLANS
- PAVEMENT REMOVAL & OBLITERATION

REVISIONS



- DENOTES FILL IN WETLAND
- DENOTES FILL IN SURFACE WATER
- DENOTES MECHANIZED CLEARING
- DENOTES HAND CLEARING

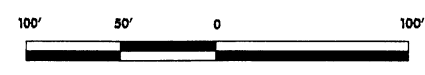
18-NOV-2004 14:05
f:\hydrsu\1\codd\permits\b3682p-2.psh
13.0am

8/17/99

18-NOV-2004 14:15
F:\hydr\sur\cadd\permits\b3682p-3.psh
mccittu

REVISIONS

PROJECT REFERENCE NO. B-3682 & W-3413	SHEET NO. 6
RW SHEET NO.	
ROADWAY DESIGN ENGINEER	HYDRAULICS ENGINEER
PRELIMINARY PLANS DO NOT USE FOR CONSTRUCTION	

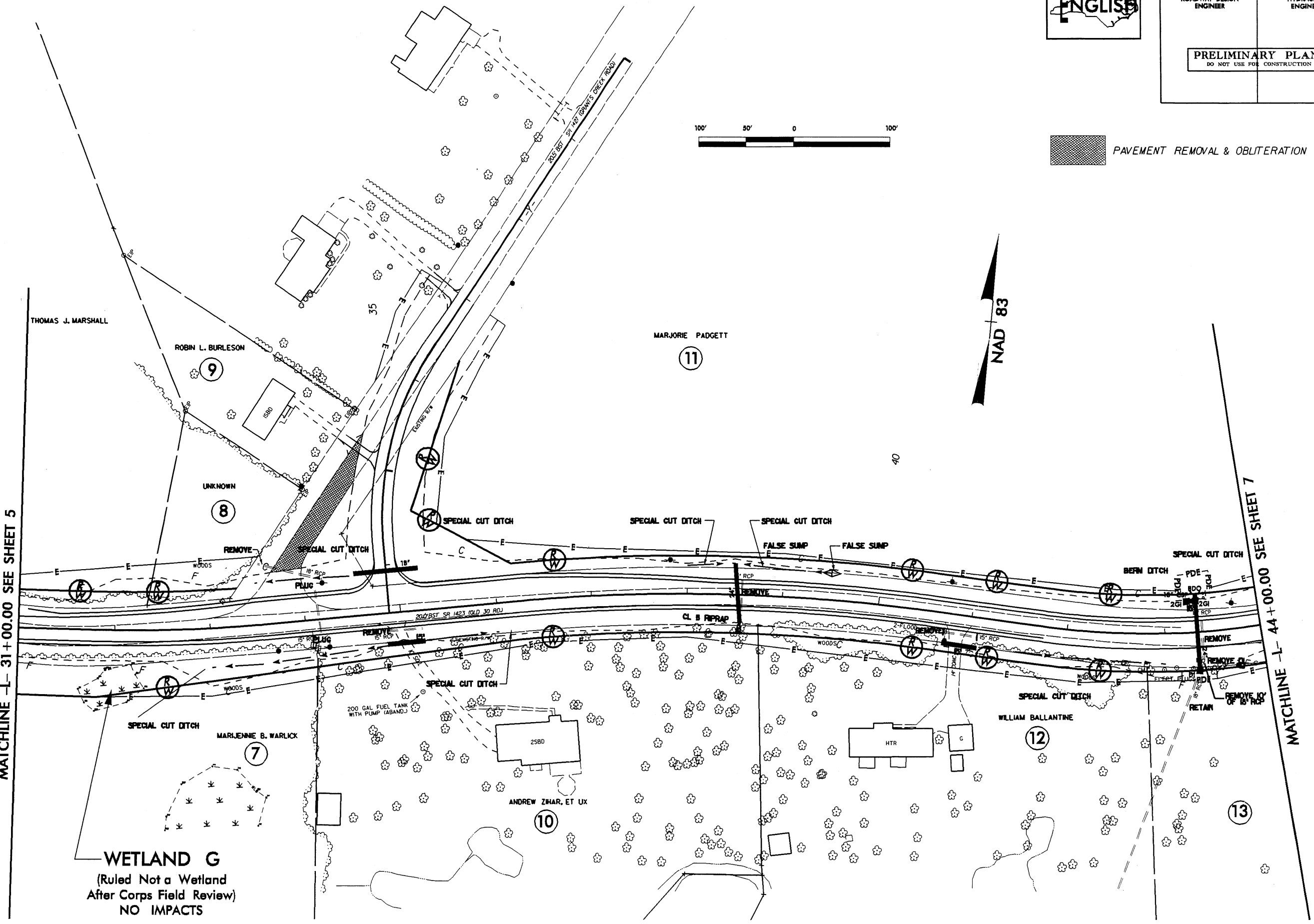


PAVEMENT REMOVAL & OBLITERATION



MATCHLINE -L- 31+00.00 SEE SHEET 5

MATCHLINE -L- 44+00.00 SEE SHEET 7



See sheet 12, 13 for -L- Profile

8/17/99

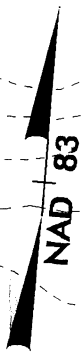
18-NOV-2004 14:50
r:\hydr\au\cadd\permits\b3682p-3.psh
Belton

REVISIONS

PROJECT REFERENCE NO. B-3682 & W-3413	SHEET NO. 6A
RW SHEET NO.	
ROADWAY DESIGN ENGINEER	HYDRAULICS ENGINEER
PRELIMINARY PLANS DO NOT USE FOR CONSTRUCTION	

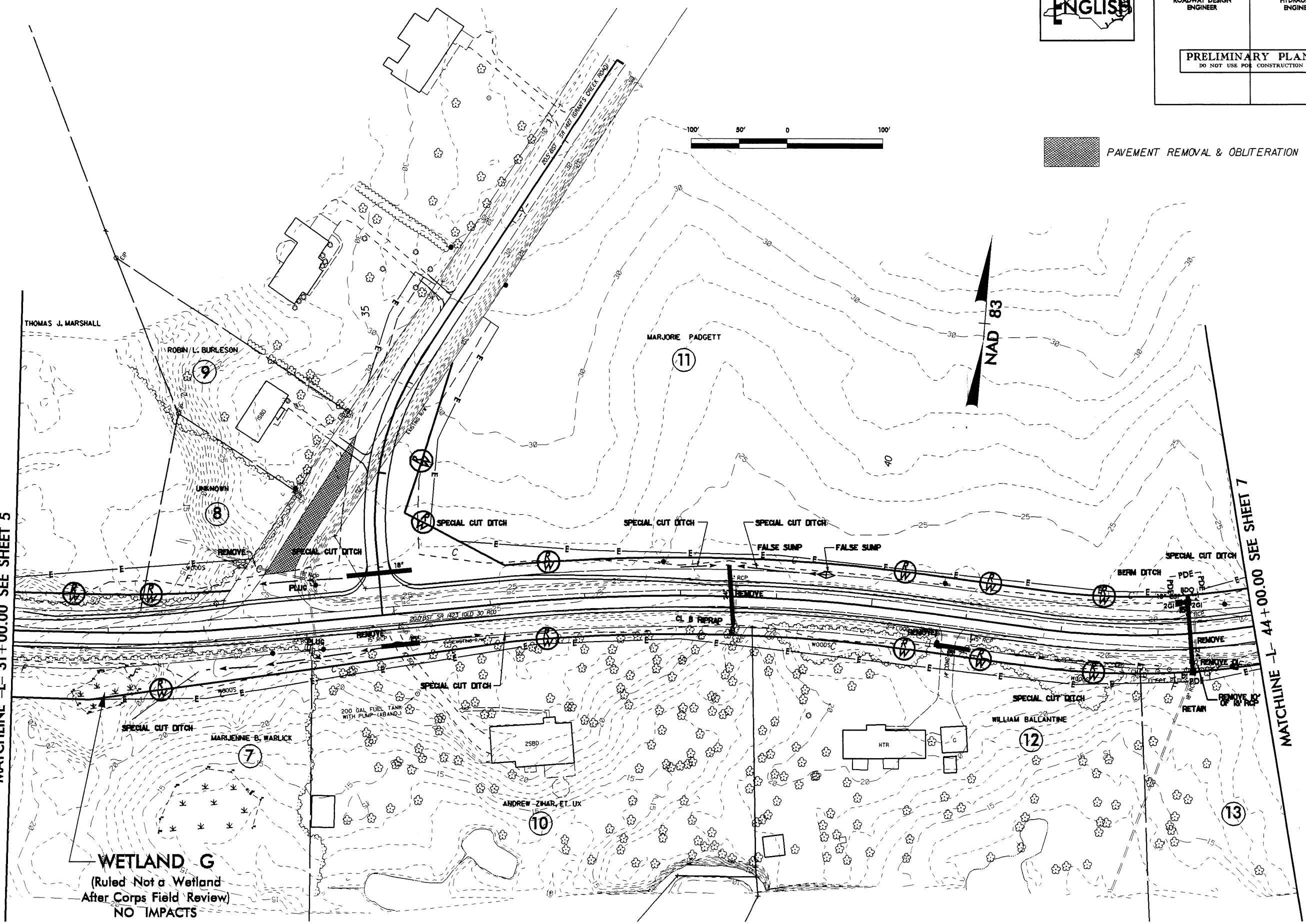


PAVEMENT REMOVAL & OBLITERATION



MATCHLINE -L- 31+00.00 SEE SHEET 5

MATCHLINE -L- 44+00.00 SEE SHEET 7



WETLAND G
(Ruled Not a Wetland
After Corps Field Review)
NO IMPACTS

See sheet 12, 13 for -L- Profile

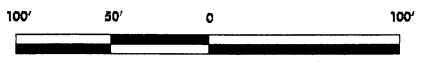
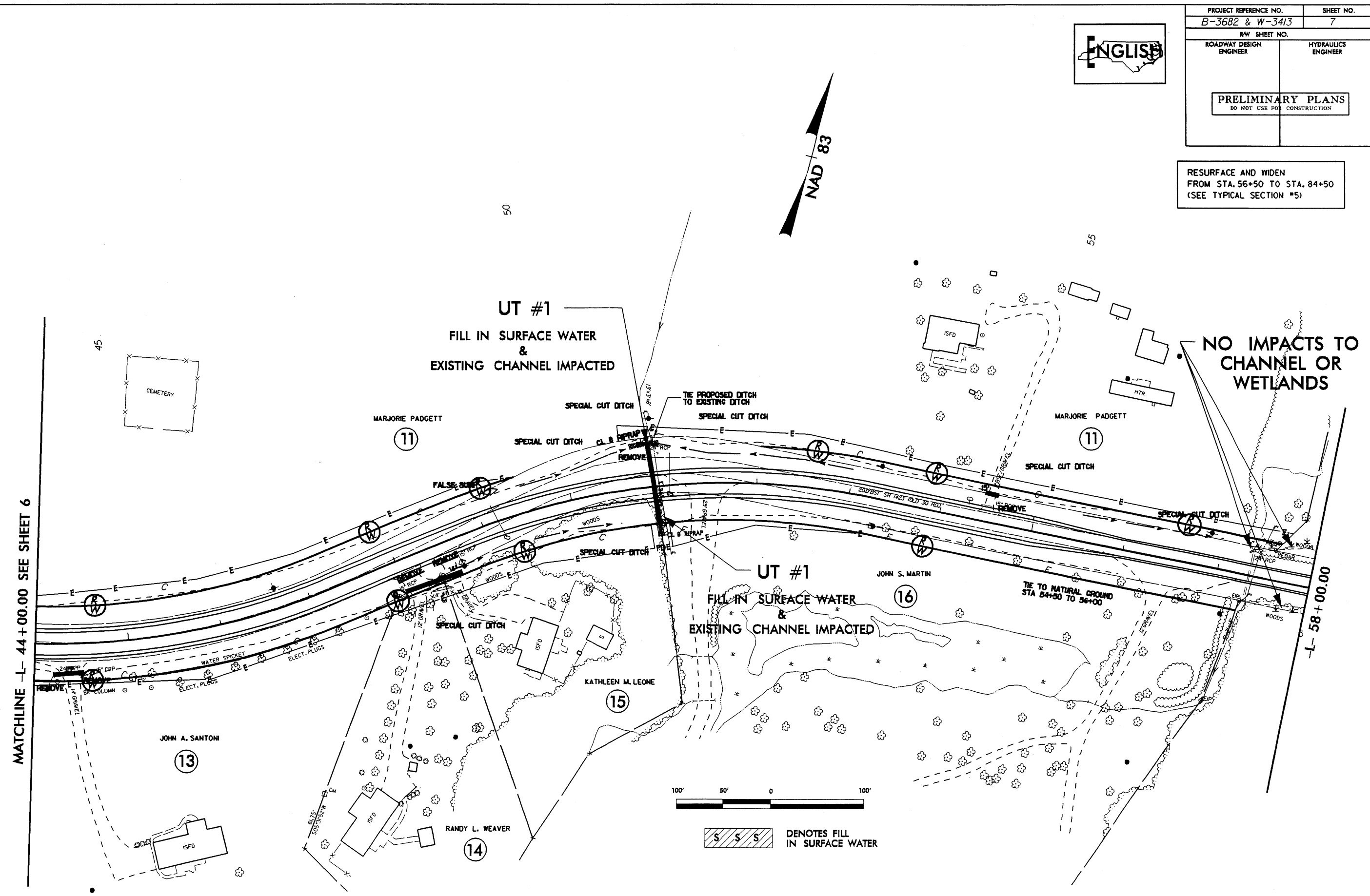
8/17/99

18-NOV-2004 14:32
F:\hadr\2001\cadd\perm\ts\3682p-4.psh
m.e.l.w.

REVISIONS

PROJECT REFERENCE NO. B-3682 & W-3413		SHEET NO. 7	
RW SHEET NO.			
ROADWAY DESIGN ENGINEER		HYDRAULICS ENGINEER	
PRELIMINARY PLANS DO NOT USE FOR CONSTRUCTION			

RESURFACE AND WIDEN
FROM STA. 56+50 TO STA. 84+50
(SEE TYPICAL SECTION #5)



SSS DENOTES FILL IN SURFACE WATER

MATCHLINE -L- 44+00.00 SEE SHEET 6

-L- 58+00.00

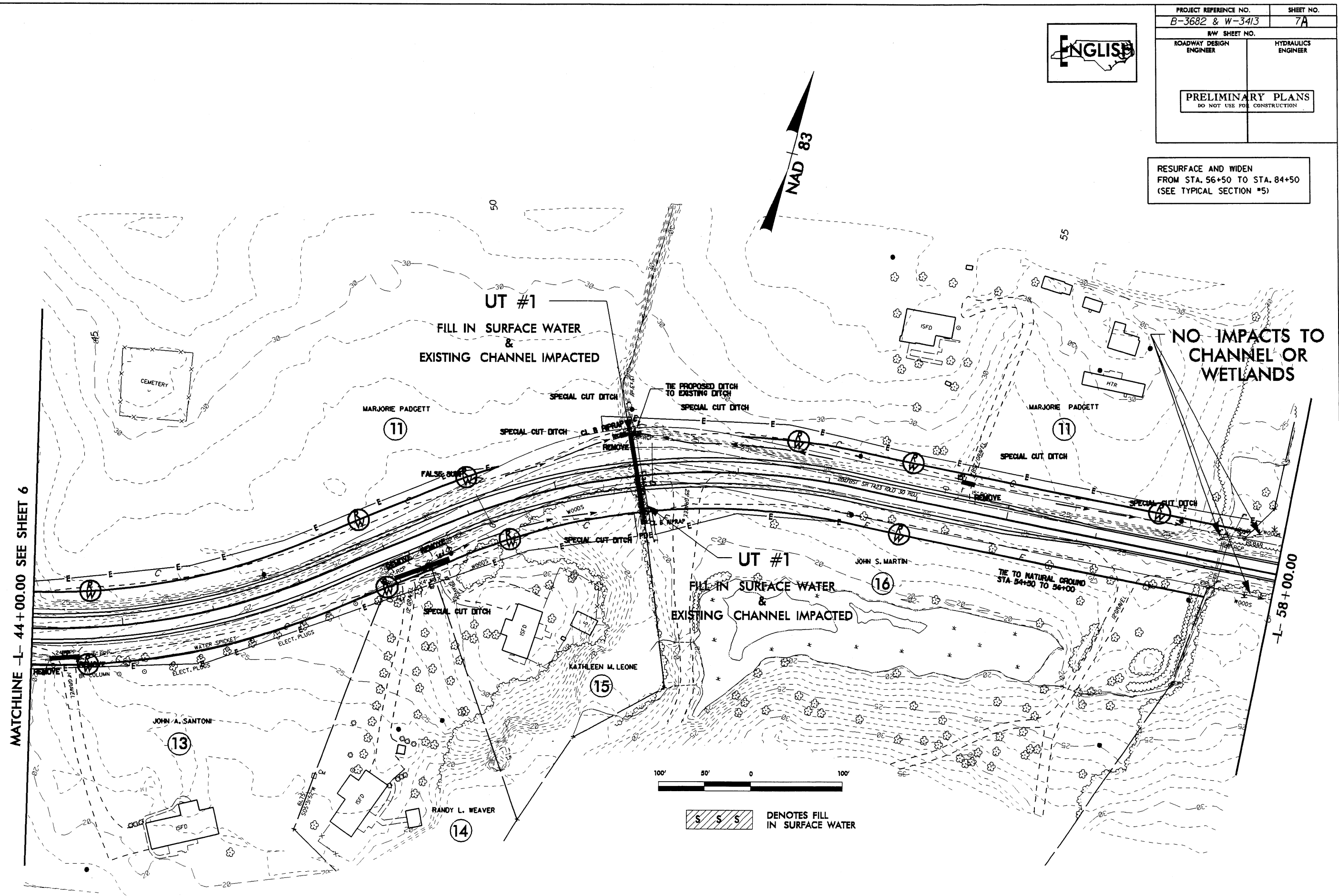
See sheet 13 for -L- Profile

8/17/99

PROJECT REFERENCE NO. B-3682 & W-3413	SHEET NO. 7A
RW SHEET NO.	
ROADWAY DESIGN ENGINEER	HYDRAULICS ENGINEER
PRELIMINARY PLANS DO NOT USE FOR CONSTRUCTION	



RESURFACE AND WIDEN
FROM STA. 56+50 TO STA. 84+50
(SEE TYPICAL SECTION #5)



REVISIONS

MATCHLINE -L- 44+00.00 SEE SHEET 6

-L- 58+00.00

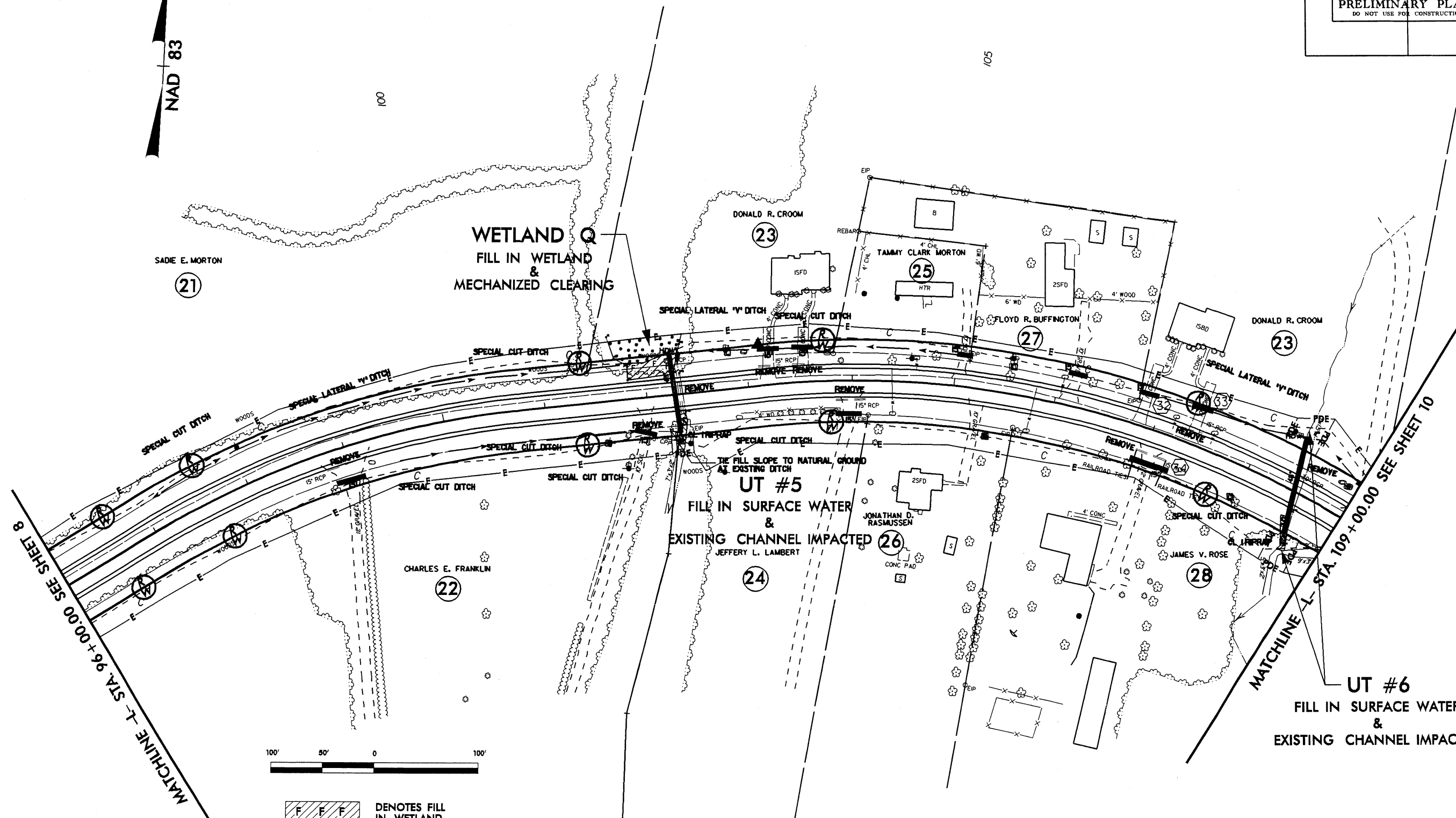
18-NOV-2004 14:54
 r:\hydr\au-1\codd\permits\b3682p-4.psh
 bslam

See sheet 13 for -L- Profile

PROJECT REFERENCE NO. B-3682 & W-3413	SHEET NO. 9
RW SHEET NO.	
ROADWAY DESIGN ENGINEER	HYDRAULICS ENGINEER
PRELIMINARY PLANS DO NOT USE FOR CONSTRUCTION	

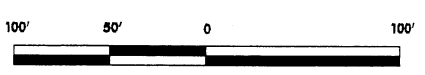


8/17/99



MATCHLINE -L- STA. 96+00.00 SEE SHEET 8

MATCHLINE -L- STA. 109+00.00 SEE SHEET 10



- DENOTES FILL IN WETLAND
- DENOTES FILL IN SURFACE WATER
- DENOTES MECHANIZED CLEARING

UT #6
FILL IN SURFACE WATER
&
EXISTING CHANNEL IMPACTED

UT #5
FILL IN SURFACE WATER
&
EXISTING CHANNEL IMPACTED

WETLAND Q
FILL IN WETLAND
&
MECHANIZED CLEARING

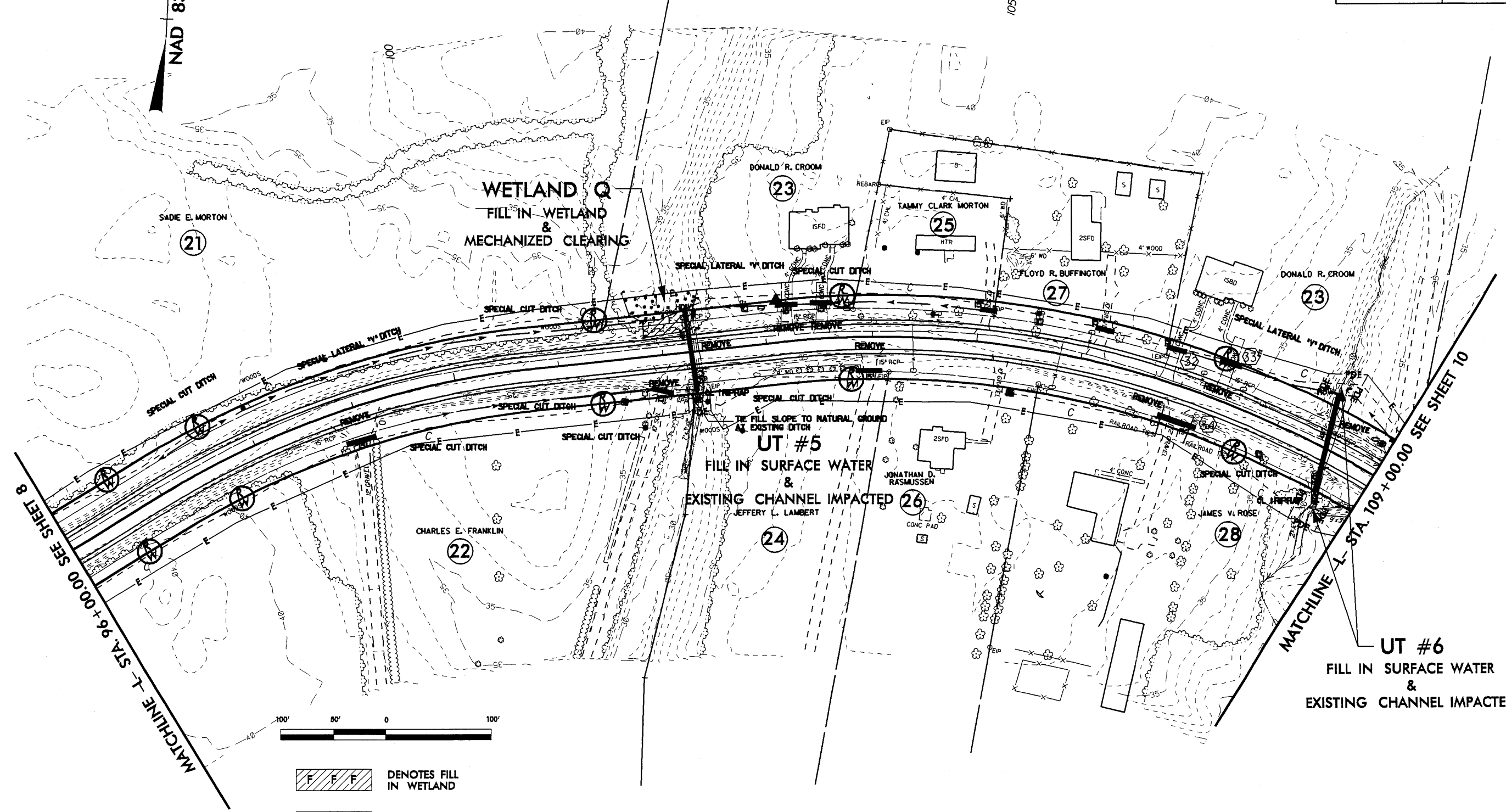
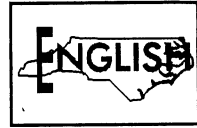
REVISIONS

18-NOV-2004 14:35
F:\hadr\2001\cadd\perm\ta\b34fa7~1.dwg
msh

See sheet 15 for -L- Profile

8/17/99

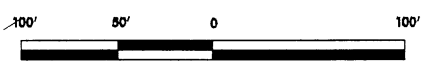
PROJECT REFERENCE NO. B-3682 & W-3413	SHEET NO. 9A
RW SHEET NO.	
ROADWAY DESIGN ENGINEER	HYDRAULICS ENGINEER
PRELIMINARY PLANS DO NOT USE FOR CONSTRUCTION	



MATCHLINE -L- STA. 96+00.00 SEE SHEET 8

MATCHLINE -L- STA. 109+00.00 SEE SHEET 10

UT #6
FILL IN SURFACE WATER
&
EXISTING CHANNEL IMPACTED



- DENOTES FILL IN WETLAND
- DENOTES FILL IN SURFACE WATER
- DENOTES MECHANIZED CLEARING

See sheet 15 for -L- Profile

REVISIONS

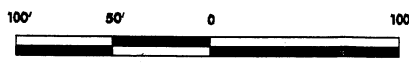
18-NOV-2004 14:57
rt:\hydr\au-1\codd\permits\b34f07-1.rps
delan

8/17/99

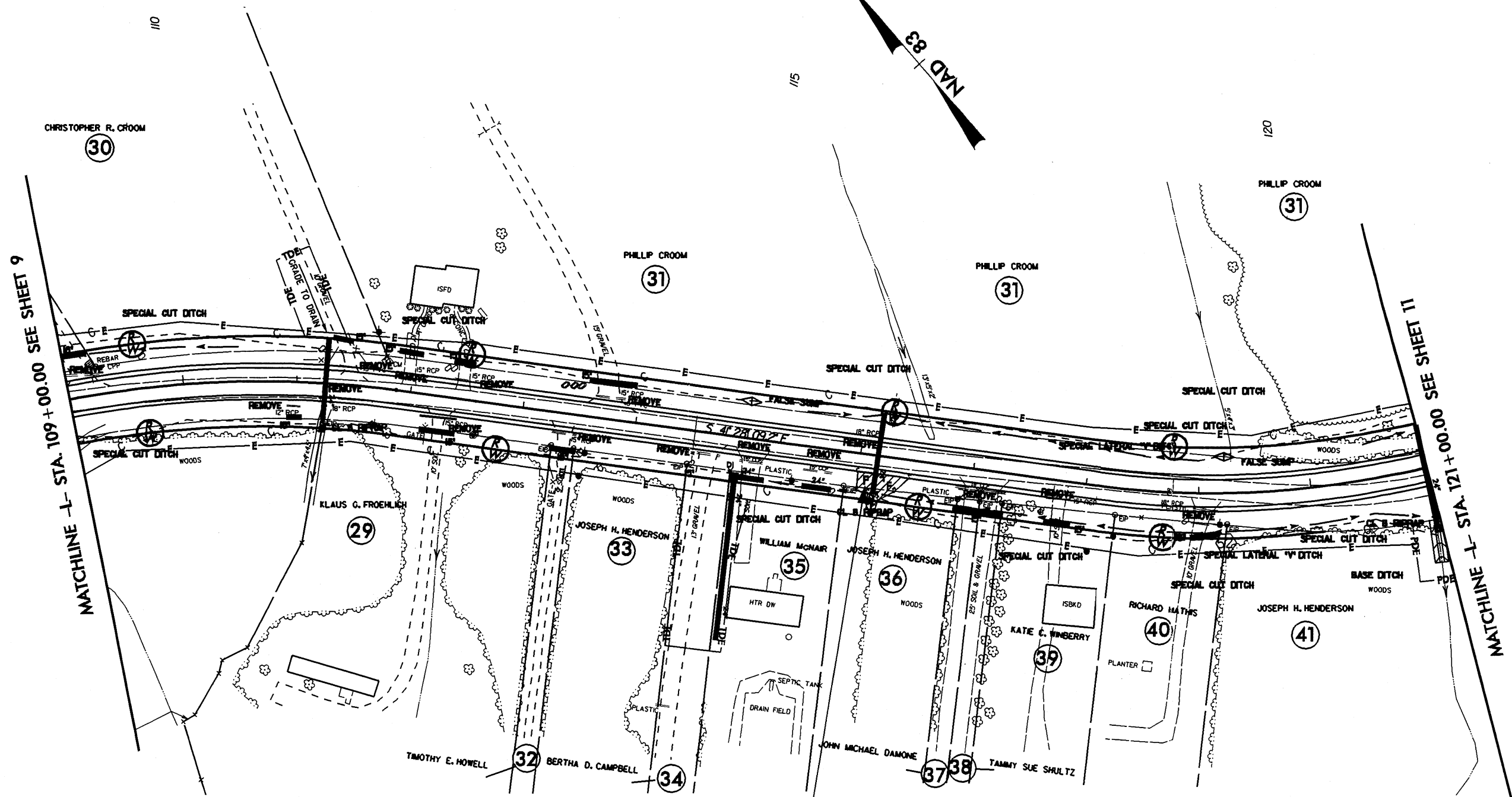
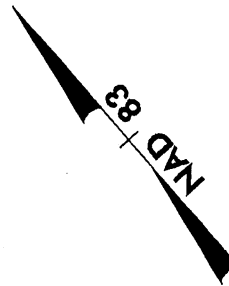
22-NOV-2004 10:51
F:\hydro\au_1.cadd\perrm\ts\323bb-1.psh



PROJECT REFERENCE NO. B-3682 & W-3413	SHEET NO. 10
RW SHEET NO.	
ROADWAY DESIGN ENGINEER	HYDRAULICS ENGINEER
PRELIMINARY PLANS DO NOT USE FOR CONSTRUCTION	



DENOTES FILL IN WETLAND



MATCHLINE -L- STA. 109+00.00 SEE SHEET 9

MATCHLINE -L- STA. 121+00.00 SEE SHEET 11

WETLAND P
FILL IN WETLAND

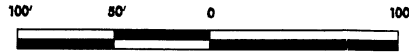
See Sheet 15 for -L- Profile

REVISIONS

8/17/99

22-NOV-2004 10:49
F:\hydro\ur\cadd\permits\b323bb-1.psh
mickdlw

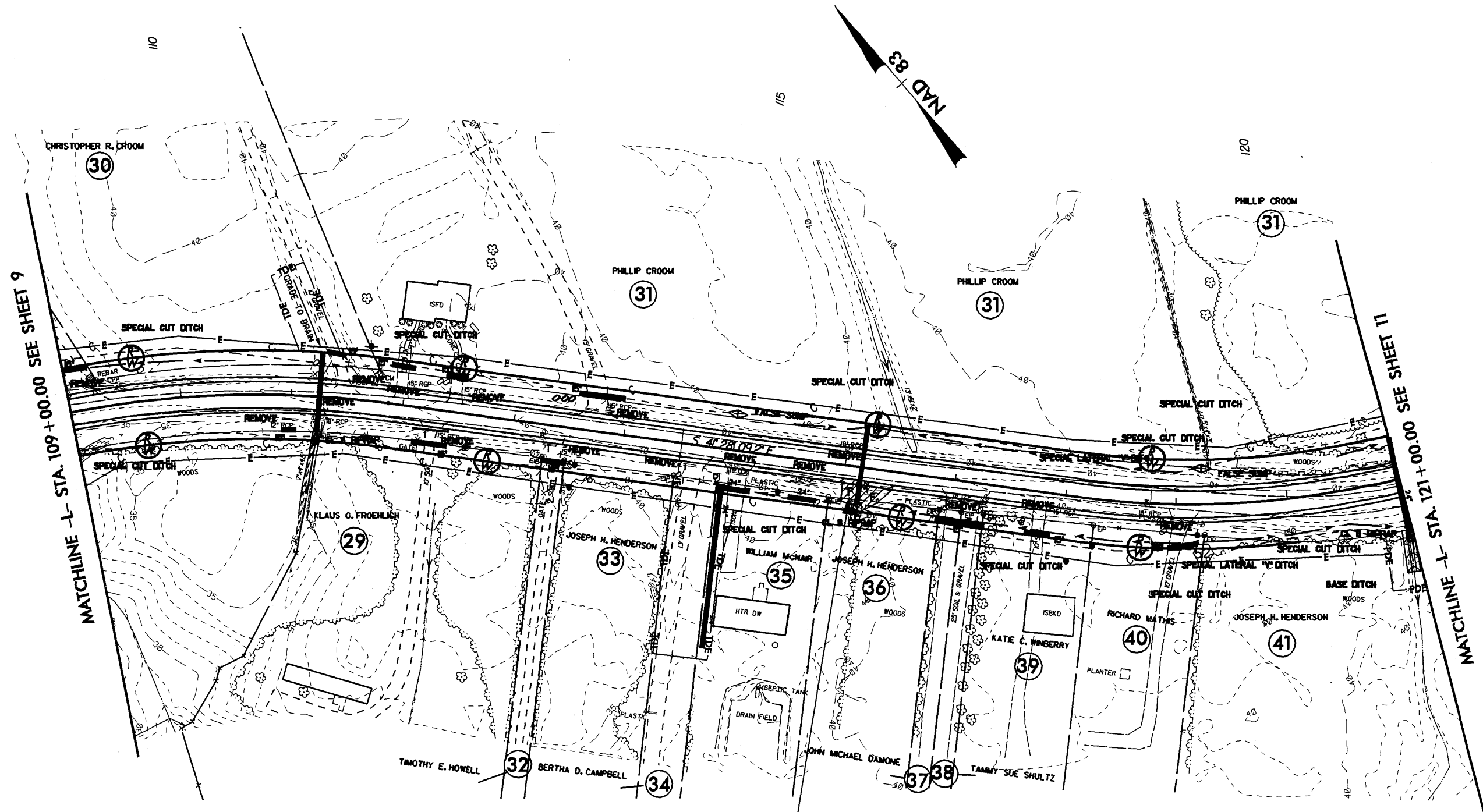
REVISIONS



F F F DENOTES FILL IN WETLAND



PROJECT REFERENCE NO. B-3682 & W-3413	SHEET NO. 10A
RW SHEET NO.	
ROADWAY DESIGN ENGINEER	HYDRAULICS ENGINEER
PRELIMINARY PLANS DO NOT USE FOR CONSTRUCTION	



WETLAND P
FILL IN WETLAND

See Sheet 15 for -L- Profile

