



STATE OF NORTH CAROLINA
DEPARTMENT OF TRANSPORTATION

ROY COOPER
GOVERNOR

JAMES H. TROGDON, III
SECRETARY

January 16, 2018

Wilmington Regulatory Field Office
US Army Corps of Engineers
69 Darlington Avenue
Wilmington, NC 28403

ATTN: Ms. Liz Hair
NCDOT Division 6 Project Coordinator

Subject: **Request for Modification of Individual Section 404 and Section 401 Water Quality Certification** for Fayetteville Outer Loop from I-95 South of Fayetteville to NC 24-87, Cumberland, Hoke and Robeson Counties. Federal Aid Project No. NHP-0620(031), State Project No. 34817.3.13, TIP Nos. X-002 B&C, and U-2519 AA, AB, BA, BB, CA, DA, E. Debit \$570.00 from WBS 34817.3.13

References: Section 404 and 401 Individual Permit Application requested April 25, 2008
Section 404 Individual Permit Issued October 23, 2008 (SAW-2008-01413)
Section 401 Water Quality Certification issued October 6, 2008 (20080737)
Section 401 Wetland 401 Modification requested May 21, 2010
Section 401 Modification issued December 16, 2010 (20080737 v. 3)
Section 404 Modification issued December 21, 2010 (SWA-2008-01413)
Section 401 Modification issued May 22, 2014 (20080737 v. 4)
Section 404 Modification issued June 24, 2014 (SAW-2008-01413)
Section 401 Modification issued January 19, 2017 (20080737 v. 5)
Section 401 Modification issued April 28, 2017 (20080737 v. 7)
Section 404 Modification issued April 25, 2017 (SAW-2008-01413)
Section 404 Modification issued April 26, 2017 (SAW-2008-01413)
Section 401 Modification issued May 5, 2017 (20080737 v. 6)

Dear Madam:

The purpose of this modification request is to provide additional impacts as the result of the receipt of Duke Progress Energy's (DEP) relocation of transmission lines along the Fayetteville Outer Loop. Attached are the revised utility permit drawings which includes the previously permitted sewer relocation impacts to be completed by the Fayetteville Public Works Commission.

Permit Site #2 wetland impacts will increase due to DEP's transmission line turning to go around the proposed bridge structure. The impact of permanent wetland fill is <0.01 acre (approximately 19 sf). The existing pole located at approximate station 605+85+/- will be removed.

Mailing Address:
NC DEPARTMENT OF TRANSPORTATION
ENVIRONMENT ANALYSIS UNIT
1598 MAIL SERVICE CENTER
RALEIGH NC 27699-1598

Telephone: (919) 707-6000
Fax: (919) 212-5785
Customer Service: 1-877-368-4968
Website: www.ncdot.gov

Location:
1020 BIRCH RIDGE DRIVE
RALEIGH NC 27610

Permit Site #5 will require an additional 0.23 acre of hand clearing to accommodate the relocation of two transmission lines. Since this area falls outside of the Right-of-Way for the project, biologists from HDR, Inc. delineated the wetland area.

Regulatory Approvals

The design-build let date for the U-2519CA project was June 21, 2016. Final completion is anticipated July 2021.

Section 404: We are hereby requesting the modifications described above and an expiration date of July 1, 2021 for the USACE Individual Permit signed October 23, 2008 (SAW-2008-01413), for the above-described activities.

Section 401: We are hereby requesting a modification to the 401 Water Quality Certification from the NCDWR issued October 6, 2008 (DWQ No. 003278). In compliance with Section 143-215.3D(e) of the NCAC, please debit \$570.00 from WBS 34817.3.13 for processing the Section 401 permit modification.

A copy of this modification request and its distribution list will be posted on the NCDOT website at: <https://connect.ncdot.gov/resources/Environmental>.

Thank you for your assistance with this project. If you have any questions or need additional information, please contact James J. Rerko, PWS at 910-634-0834 or jjrerko@ncdot.gov.

Sincerely,



for Philip S. Harris III, P.E., C.P.M., Unit Head
Environmental Analysis Unit

cc:
NCDOT Permit Application Standard Distribution List

Revised 1/16/2018

PLOT DRIVER: NCDOT_pdf_color_eng-100.pit
 USER: JMASSROC
 DATE: 12/19/2017
 TIME: 2:46:43 PM
 FILE: \

09.08/99

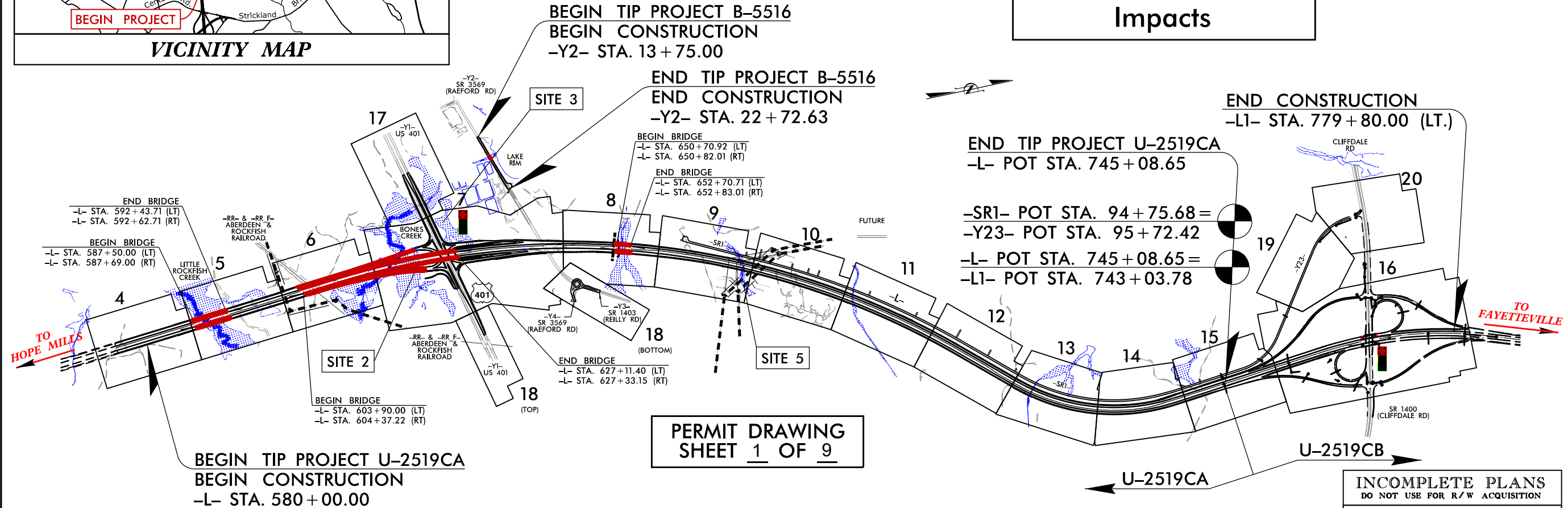
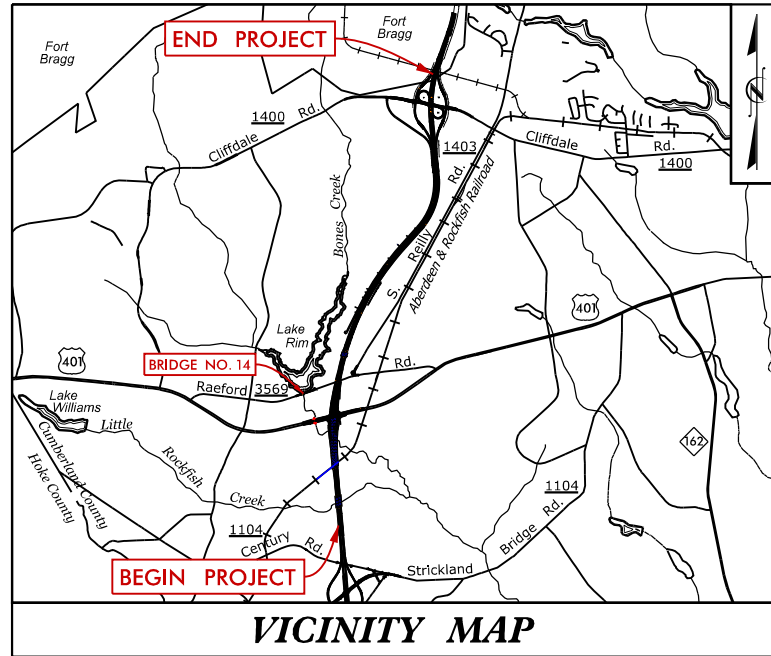
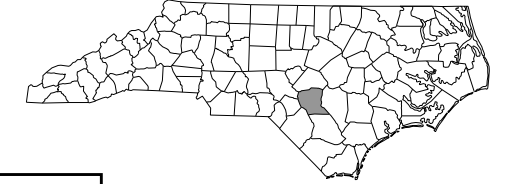
CONTRACT: C203759 TIP PROJECT: U-2519CA & B-5516

STATE OF NORTH CAROLINA
 DIVISION OF HIGHWAYS

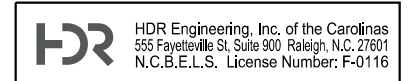
CUMBERLAND COUNTY

LOCATION: FUTURE I-295 - FAYETTEVILLE OUTER LOOP FROM SOUTH OF US 401 TO SOUTH OF SR 1400 (CLIFFDALE ROAD).
TYPE OF WORK: GRADING, PAVING, DRAINAGE, RETAINING WALLS, STRUCTURES & SIGNALS

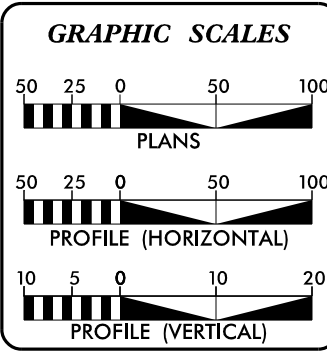
STATE	STATE PROJECT REFERENCE NO.	SHEET NO.	TOTAL SHEETS
N.C.	U-2519CA & B-5516	1	
STATE PROJ. NO.	F.A. PROJ. NO.	DESCRIPTION	
34817.3.13	NHP-0620(031)		



CLEARING ON THIS PROJECT SHALL BE PERFORMED TO THE LIMITS ESTABLISHED BY METHOD III.
 THIS IS A CONTROLLED-ACCESS PROJECT WITH ACCESS BEING LIMITED TO INTERCHANGES.
 A PORTION OF THIS PROJECT IS LOCATED WITHIN THE MUNICIPAL BOUNDARIES OF THE CITY OF FAYETTEVILLE



INCOMPLETE PLANS
 DO NOT USE FOR R/W ACQUISITION
 DOCUMENT NOT CONSIDERED FINAL
 UNLESS ALL SIGNATURES COMPLETED



DESIGN DATA

ADT 2015 =	36,000
ADT 2040 =	47,700
DHV =	8%
D =	55%
*T =	12%
V =	70 MPH
*(TTST 4% + DUALS 8%)	
FUNC CLASS =	FREeway INTERSTATE STATEWIDE TIER

PROJECT LENGTH

LENGTH ROADWAY TIP PROJECT U-2519CA =	2.562 MILES
LENGTH STRUCTURE TIP PROJECT U-2519CA =	0.565 MILE
TOTAL LENGTH TIP PROJECT U-2519CA =	3.127 MILES
LENGTH ROADWAY TIP PROJECT B-5516 =	0.157 MILE
LENGTH STRUCTURE TIP PROJECT B-5516 =	0.013 MILE
TOTAL LENGTH TIP PROJECT B-5516 =	0.170 MILE
NCDOT CONTACT:	K. ZAK HAMIDI, PE DESIGN-BUILD UNIT - PROJECT ENGINEER

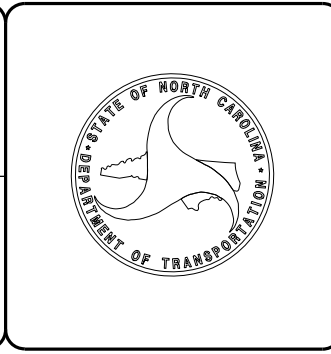
Prepared for the Office of:
DIVISION OF HIGHWAYS
 1000 Birch Ridge Dr., Raleigh NC, 27610

2012 STANDARD SPECIFICATIONS

RIGHT OF WAY DATE:	JUNE 21, 2016	PAUL A. MEEHAN, PE PROJECT ENGINEER
LETTING DATE:	JUNE 21, 2016	PHILLIP E. ROGERS, PE PROJECT DESIGN ENGINEER

HYDRAULICS ENGINEER
 JAMES A. RICE, PE

ROADWAY DESIGN ENGINEER
 ANTHONY G. THOMPSON, PE

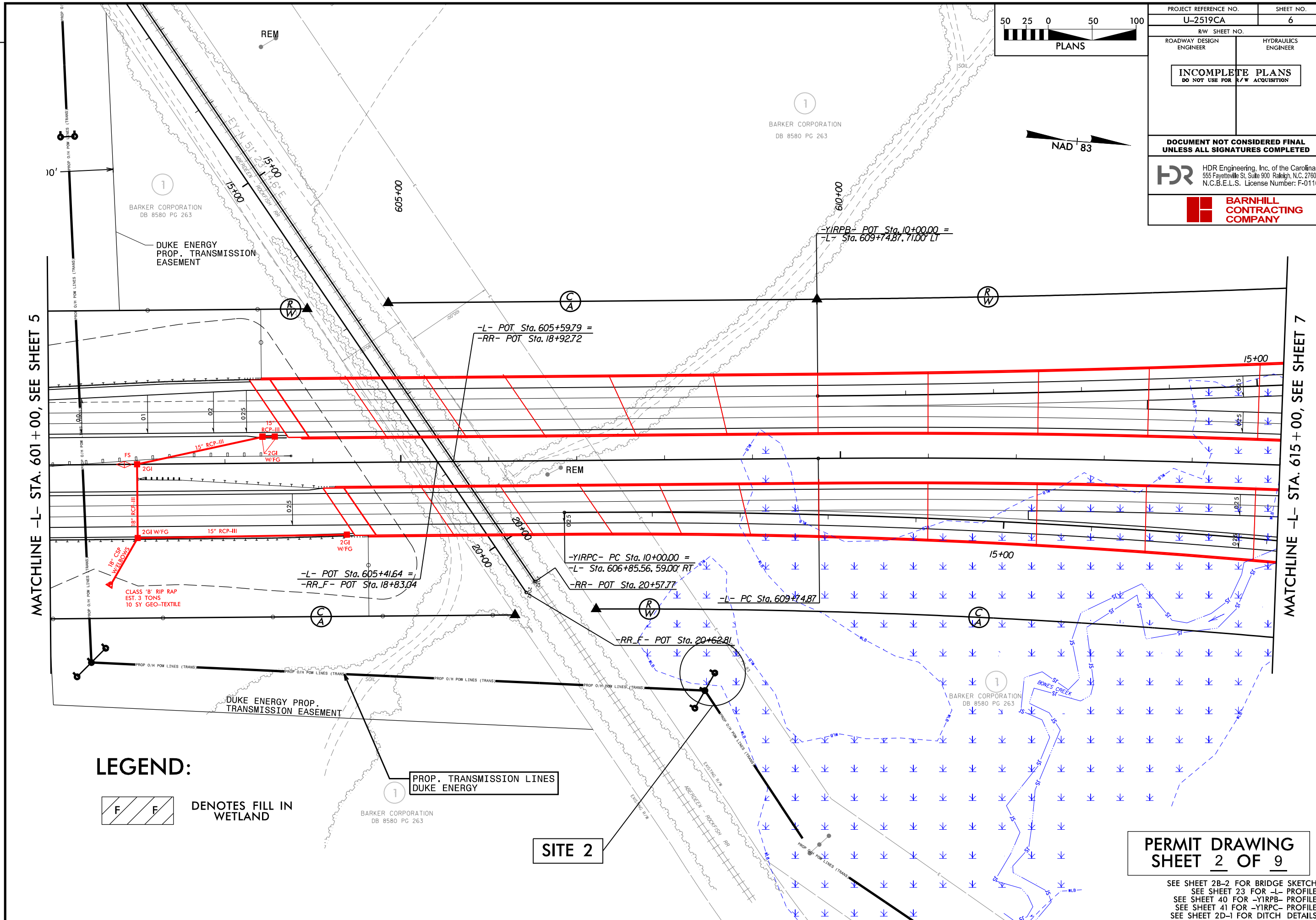


Revised 1/16/2018

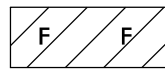
PLOT DRIVER: NCDOT_color_eng_100.plt
USER: JMASSROC
DATE: 12/19/2017
TIME: 2:58:49 PM

12/08/17 - GUARDRAIL REVISION: REVISED MEDIAN GUARDRAIL END UNITS TO GREU 350 - AGT

REVISIONS



LEGEND:



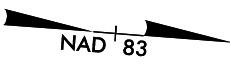
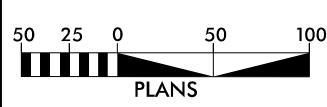
DENOTES FILL IN WETLAND

PROP. TRANSMISSION LINES
DUKE ENERGY

SITE 2

**PERMIT DRAWING
SHEET 2 OF 9**

SEE SHEET 2B-2 FOR BRIDGE SKETCH
SEE SHEET 23 FOR -L- PROFILE
SEE SHEET 40 FOR -YIRPB- PROFILE
SEE SHEET 41 FOR -YIRPC- PROFILE
SEE SHEET 2D-1 FOR DITCH DETAILS



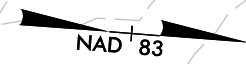
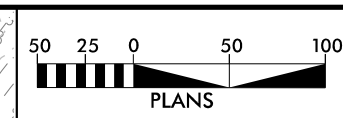
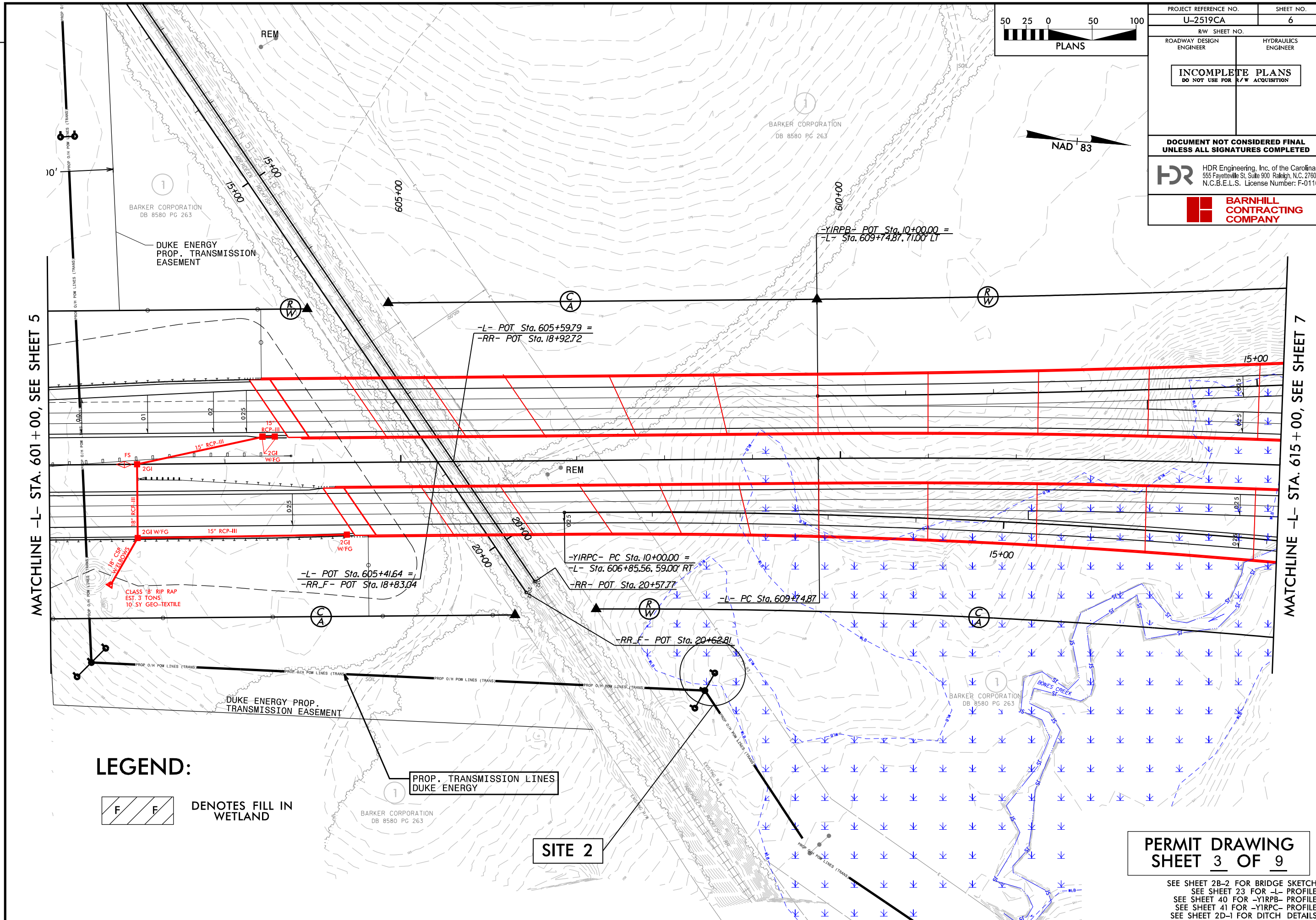
PROJECT REFERENCE NO. U-2519CA	SHEET NO. 6
RW SHEET NO.	
ROADWAY DESIGN ENGINEER	HYDRAULICS ENGINEER
INCOMPLETE PLANS DO NOT USE FOR R/W ACQUISITION	
DOCUMENT NOT CONSIDERED FINAL UNLESS ALL SIGNATURES COMPLETED	
HDR Engineering, Inc. of the Carolinas 555 Fayetteville St. Suite 900 Raleigh, N.C. 27601 N.C.B.E.L.S. License Number: F-0116	
BARNHILL CONTRACTING COMPANY	

Revised 1/16/2018

PLOT DRIVER: NCDOT_color_eng_100.plt
USER: JMASSROC
DATE: 12/19/2017
TIME: 2:57:46 PM

12/08/17 - GUARDRAIL REVISION: REVISED MEDIAN GUARDRAIL END UNITS TO GREU 350 - AGT

REVISIONS

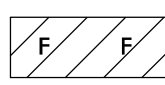


PROJECT REFERENCE NO. U-2519CA	SHEET NO. 6
ROADWAY DESIGN ENGINEER	HYDRAULICS ENGINEER
INCOMPLETE PLANS DO NOT USE FOR R/W ACQUISITION	
DOCUMENT NOT CONSIDERED FINAL UNLESS ALL SIGNATURES COMPLETED	
HDR Engineering, Inc. of the Carolinas 555 Fayetteville St. Suite 900 Raleigh, N.C. 27601 N.C.B.E.L.S. License Number: F-0116	
BARNHILL CONTRACTING COMPANY	

MATCHLINE -L- STA. 601+00, SEE SHEET 5

MATCHLINE -L- STA. 615+00, SEE SHEET 7

LEGEND:



DENOTES FILL IN WETLAND

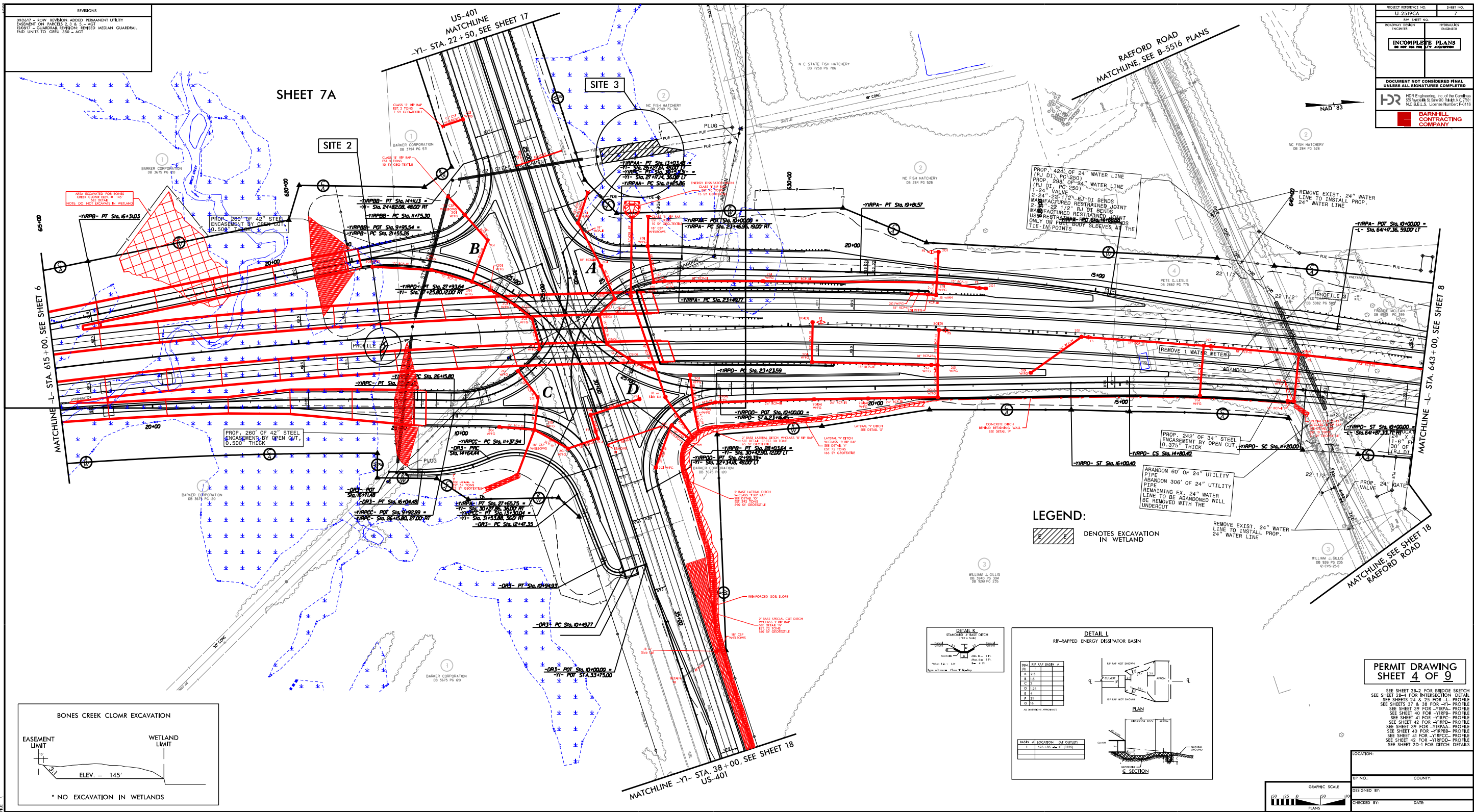
PROP. TRANSMISSION LINES
DUKE ENERGY

SITE 2

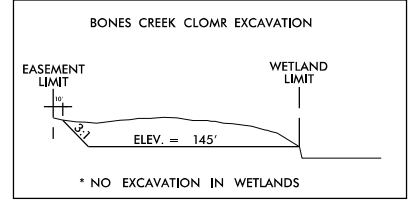
PERMIT DRAWING
SHEET 3 OF 9

SEE SHEET 2B-2 FOR BRIDGE SKETCH
SEE SHEET 23 FOR -L- PROFILE
SEE SHEET 40 FOR -YIRPB- PROFILE
SEE SHEET 41 FOR -YIRPC- PROFILE
SEE SHEET 2D-1 FOR DITCH DETAILS

Revised 1/16/2018



PROJECT NO. NC2017-01-001-001-001
 USER: JHARRIS
 DATE: 1/16/2018
 TIME: 3:27:59 PM



PROJECT REFERENCE NO. 7
 SHEET NO. 7
 INCOMPLETE PLANS
 DOCUMENT NOT CONSIDERED FINAL UNLESS ALL SIGNATURES COMPLETED
 H2R
 H2R Engineering, Inc. of the Carolinas
 2550 WILSON ST. SUITE 100 RALEIGH, NC 27609
 N.C. REG. E.L.S. LICENSE NUMBER: F-0116
 BARNHILL CONTRACTING COMPANY

PERMIT DRAWING SHEET 4 OF 9

LOCATION

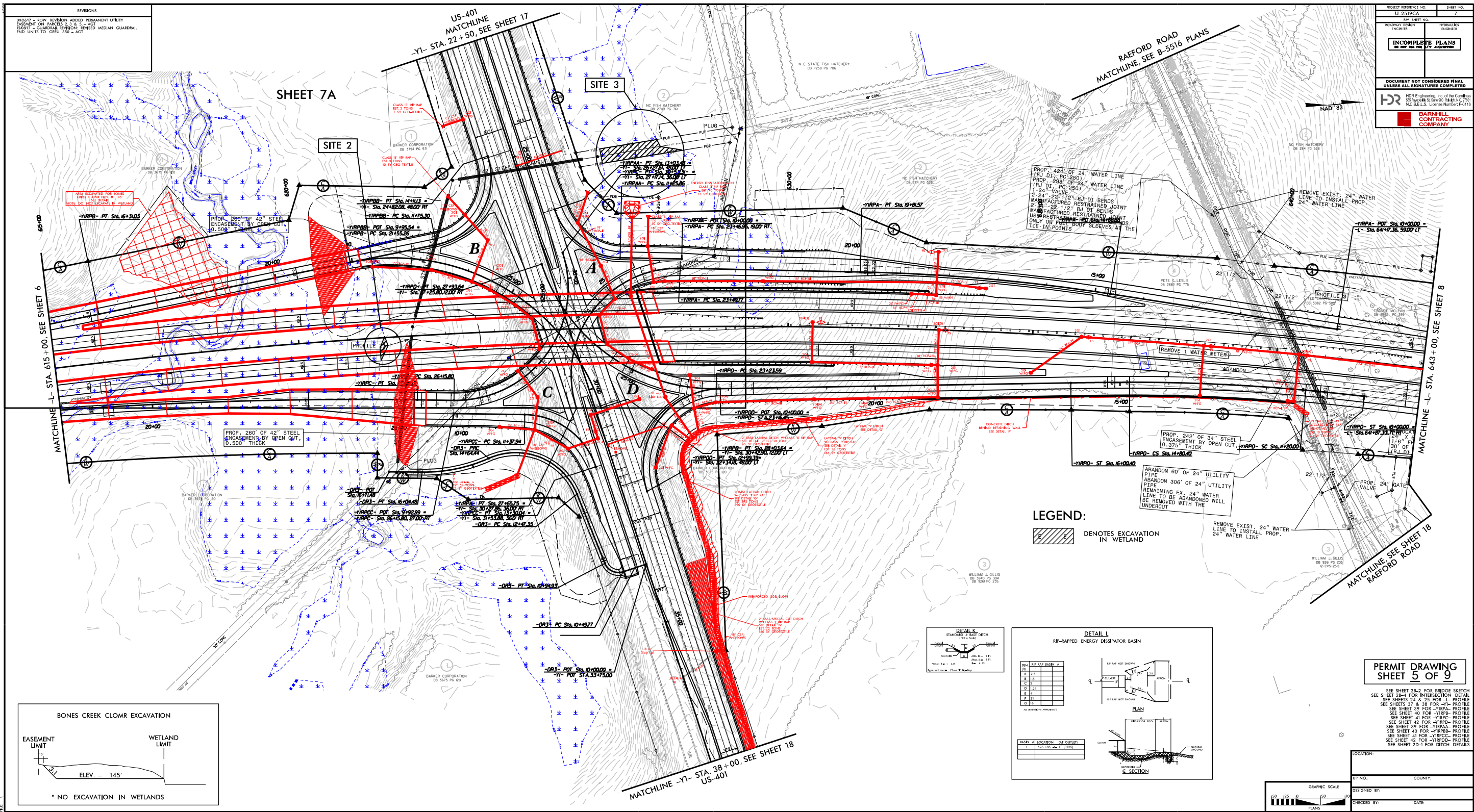
TIP NO. COUNTY

DESIGNED BY

CHECKED BY DATE

GRAPHIC SCALE
 0 25 50 100
 FEET
 PLANS

Revised 1/16/2018



REVISIONS

09/26/17 - ROW REVISION, ADDED PERMANENT UTILITY ENCASUREMENT ON PARCELS 2 & 3 - AGT

10/26/17 - GUARDRAIL REVISION, REVISED MEDIAN GUARDRAIL END UNITS TO GREY 330 - AGT

PROJECT REFERENCE NO. 17-2519CA SHEET NO. 7

ROADWAY DESIGN ENGINEER

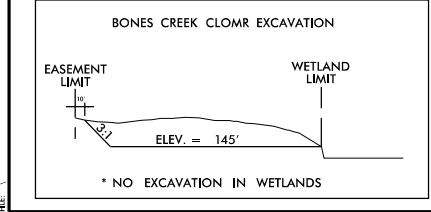
HYDRAULICS ENGINEER

INCOMPLETE PLANS

DOCUMENT NOT CONSIDERED FINAL UNLESS ALL SIGNATURES COMPLETED

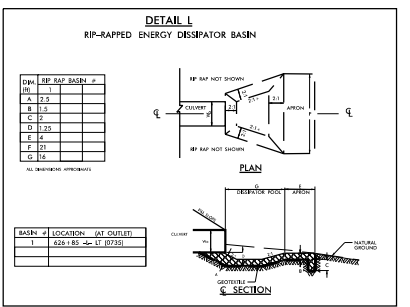
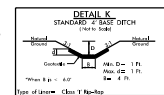
HDR ENGINEERING, Inc. of the Carolinas
2515 FARMER ST. SUITE 100 RANDOLPH, NC 27033
N.C. REG. E.L.S. License Number: F-0116

BARNHILL CONTRACTING COMPANY



LEGEND:

DENOTES EXCAVATION IN WETLAND



PERMIT DRAWING
SHEET 5 OF 9

SEE SHEET 2D-2 FOR BRIDGE SKETCH
SEE SHEET 2B-4 FOR INTERSECTION DETAIL
SEE SHEETS 2A & 33 FOR -L- PROFILES
SEE SHEETS 27 & 35 FOR -YI- PROFILES
SEE SHEET 39 FOR -YIRPA- PROFILE
SEE SHEET 40 FOR -YIRPC- PROFILE
SEE SHEET 41 FOR -YIRPA- PROFILE
SEE SHEET 42 FOR -YIRPC- PROFILE
SEE SHEET 43 FOR -YIRPA- PROFILE
SEE SHEET 44 FOR -YIRPC- PROFILE
SEE SHEET 45 FOR -YIRPA- PROFILE
SEE SHEET 46 FOR -YIRPC- PROFILE

LOCATION

TIP NO. COUNTY

DESIGNED BY

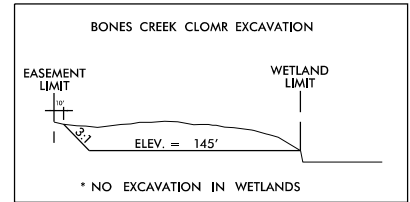
CHECKED BY DATE

PRINTABLE: NCDOT_permitting_permitting_CAD.dwg
USER: ANAS55DC
DATE: 1/16/2018
TIME: 3:28:23 PM

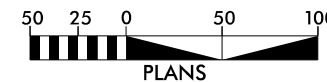
Revised 1/16/2018

PLOT DRIVER: NCDOT_eng_100.plt
USER: JMASSROC
DATE: 12/19/2017
TIME: 3:31:15 PM

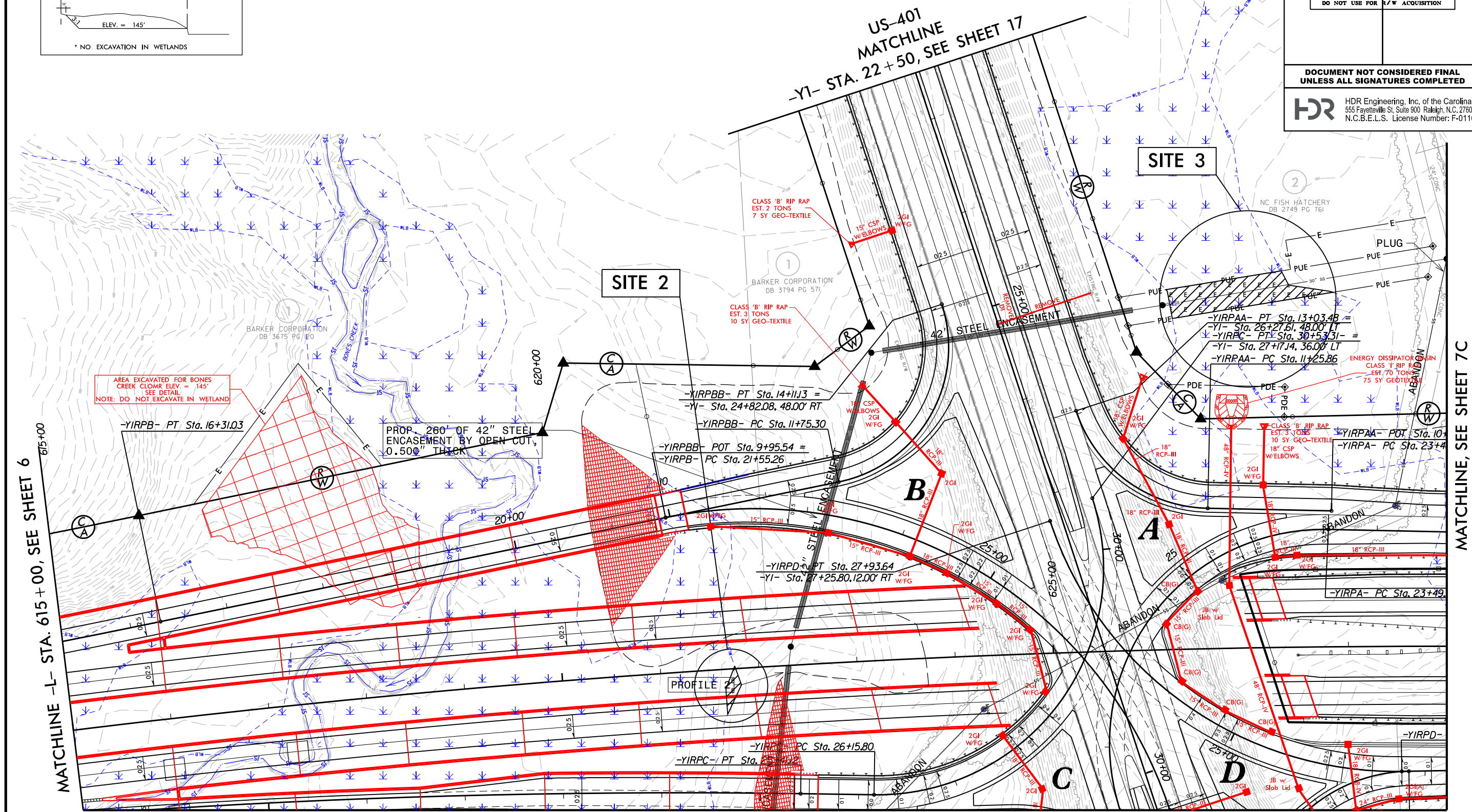
REVISIONS



LEGEND:
[Hatched Box] DENOTES EXCAVATION IN WETLAND



PROJECT REFERENCE NO. U-2519CA		SHEET NO. 7A
RW SHEET NO.		
ROADWAY DESIGN ENGINEER	HYDRAULICS ENGINEER	
INCOMPLETE PLANS DO NOT USE FOR R/W ACQUISITION		
DOCUMENT NOT CONSIDERED FINAL UNLESS ALL SIGNATURES COMPLETED		
HDR Engineering, Inc. of the Carolinas 555 Fayetteville St. Suite 900 Raleigh, N.C. 27601 N.C.B.E.L.S. License Number: F-0116		



MATCHLINE -L- STA. 615+00, SEE SHEET 6

MATCHLINE, SEE SHEET 7B

MATCHLINE, SEE SHEET 7C

PERMIT DRAWING
SHEET 6 OF 9

Revised 1/16/2018

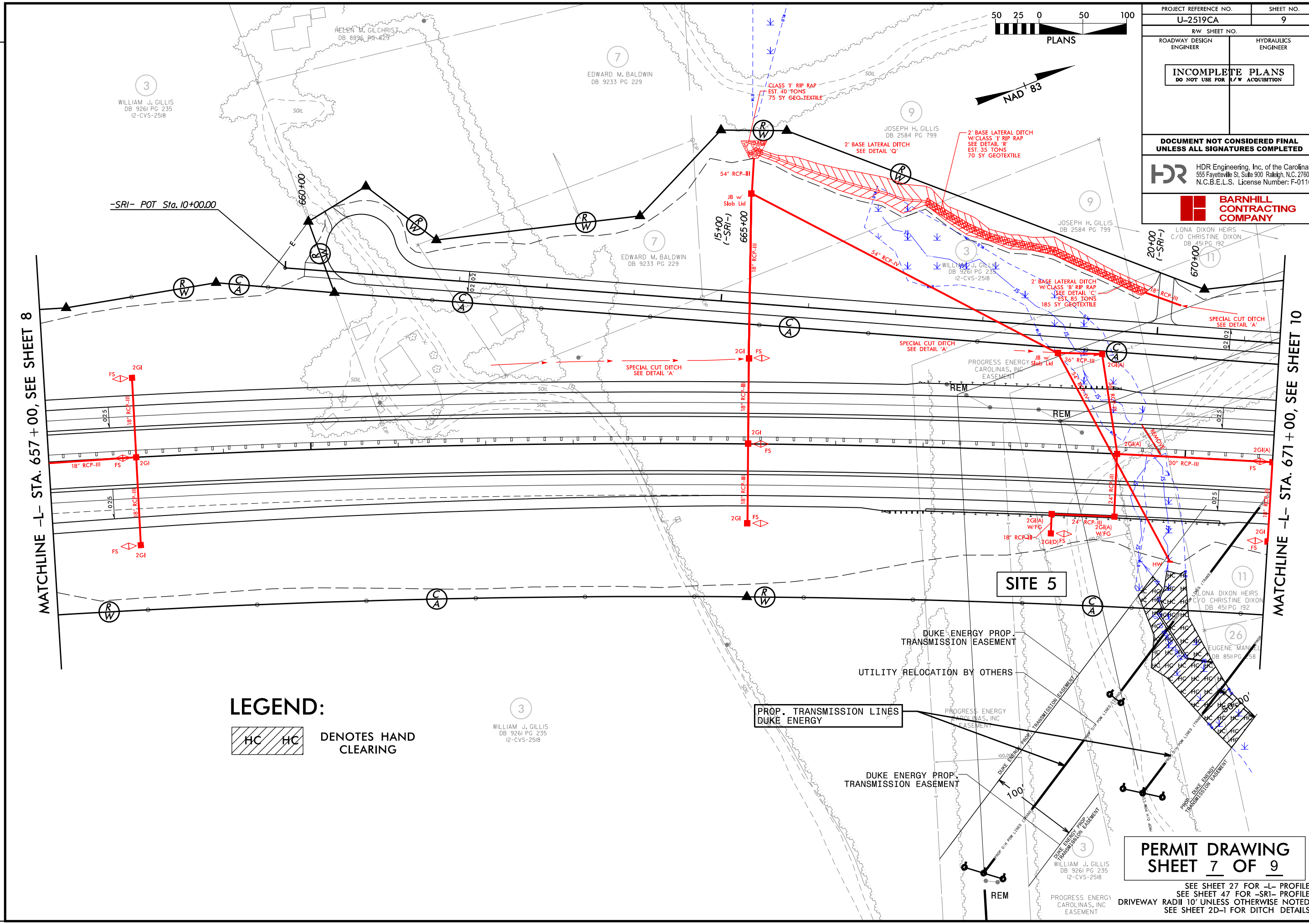
PLOT DRIVER: NCDOT_color_eng_100.plt
USER: JMASSROC
FILE: \

DATE: 12/19/2017

TIME: 3:07:55 PM

REVISIONS

12/08/17 - GUARDRAIL REVISION: INCORPORATED GUARDRAIL TO PROTECT SIGN STRUCTURE 103. - AGT
12/08/17 - UTILITY REVISION: INCORPORATED UPDATED AERIAL UTILITY DESIGN. - AGT



LEGEND:

HC HC DENOTES HAND CLEARING

PROJECT REFERENCE NO. U-2519CA	SHEET NO. 9
RW SHEET NO.	
ROADWAY DESIGN ENGINEER	HYDRAULICS ENGINEER
INCOMPLETE PLANS DO NOT USE FOR A/W ACQUISITION	
DOCUMENT NOT CONSIDERED FINAL UNLESS ALL SIGNATURES COMPLETED	
HDR Engineering, Inc. of the Carolinas 555 Fayetteville St. Suite 900 Raleigh, N.C. 27601 N.C.B.E.L.S. License Number: F-0116	
BARNHILL CONTRACTING COMPANY LONA DIXON HEIRS C/O CHRISTINE DIXON DB 451 PG 192	

PERMIT DRAWING
SHEET 7 OF 9

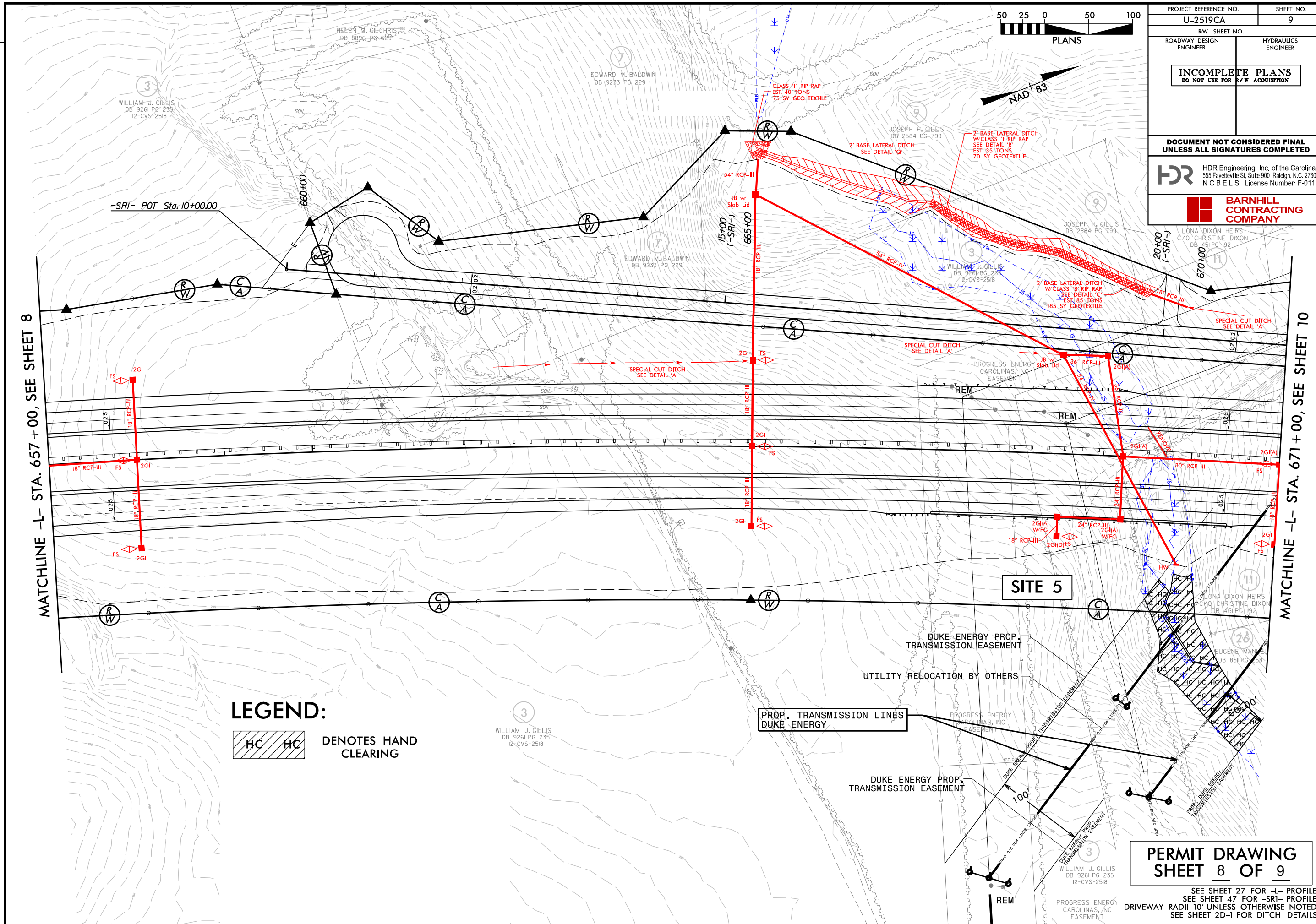
SEE SHEET 27 FOR -L- PROFILE
SEE SHEET 47 FOR -SRI- PROFILE
DRIVEWAY RADII 10' UNLESS OTHERWISE NOTED
SEE SHEET 2D-1 FOR DITCH DETAILS

Revised 1/16/2018

PLOT DRIVER: NCDOT_color_eng_100.plt
USER: JMASSROC
DATE: 12/19/2017
TIME: 3:07:29 PM

REVISIONS

12/08/17 - GUARDRAIL REVISION: INCORPORATED GUARDRAIL TO PROTECT SIGN STRUCTURE 103. - AGT
12/08/17 - UTILITY REVISION: INCORPORATED UPDATED AERIAL UTILITY DESIGN. - AGT



PROJECT REFERENCE NO. U-2519CA	SHEET NO. 9
ROADWAY DESIGN ENGINEER	HYDRAULICS ENGINEER
INCOMPLETE PLANS DO NOT USE FOR R/W ACQUISITION	
DOCUMENT NOT CONSIDERED FINAL UNLESS ALL SIGNATURES COMPLETED	
HDR Engineering, Inc. of the Carolinas 555 Fayetteville St. Suite 900 Raleigh, N.C. 27601 N.C.B.E.L.S. License Number: F-0116	
BARNHILL CONTRACTING COMPANY	

LEGEND:

HC HC DENOTES HAND CLEARING

PROP. TRANSMISSION LINES
DUKE ENERGY

SITE 5

PERMIT DRAWING
SHEET 8 OF 9

SEE SHEET 27 FOR -L- PROFILE
SEE SHEET 47 FOR -SRI- PROFILE
DRIVEWAY RADII 10' UNLESS OTHERWISE NOTED
SEE SHEET 2D-1 FOR DITCH DETAILS

