



STATE OF NORTH CAROLINA
DEPARTMENT OF TRANSPORTATION

ROY COOPER
GOVERNOR

JAMES H. TROGDON, III
SECRETARY

October 5, 2018

Greg Daisey
NC Div. of Environmental Quality
Division of Coastal Management
401 S. Griffin St., Suite 300
Elizabeth City, NC 27909

Subject: **Revised Application for CAMA Major Development Permit** for the widening of SR 1217 (Colington Road) from Dead End to US 158 (Croatan Highway) in Dare County, North Carolina; TIP Project R-5014, Federal Aid Project No. STP-1217(6); WBS Element 41162.1.1

Reference: Application for CAMA Major Development Permit dated June 19, 2018

Dear Sir,

At the request of NCDOT, NCDOT reevaluated slopes at Site 8 for the widening of SR 1217 (Colington Road). In the original application, slopes at Site 8 were at 3:1 resulting in 0.07 acre of fill in coastal marsh. Slopes have been stepped to 2:1 at this site. This results in a reduction of impact at this site of 0.03 acre. The new impact at Site 8 is now 0.04 acre of coastal marsh. Below is an updated Table 1 that was presented in the original permit application. There are no other changes to impacts on the project.

Table 1. R-5014 Wetland Impacts

Permit Drawing Site Number	CE Map Label	Type	Permanent Impacts (ac.)	Temporary Impacts (ac.)
1	WA	Riparian	0.04	0
2	WB	Coastal	<0.01	0
3	WC	Non-riparian	<0.01	0
4	WD	Riparian	0.22	0
5	WE	Riparian	0.28	0
6	WG	Non-riparian	0.02	0
7	WL	Riparian	0.04	0

Permit Drawing Site Number	CE Map Label	Type	Permanent Impacts (ac.)	Temporary Impacts (ac.)
8	WM	Coastal	0.04	0
9	WO	Riparian	<0.01	0
11	WP	Coastal	<0.01	0
12	WQ	Coastal	<0.01	0
13	WR	Non-riparian	<0.01	0
14	WS	Coastal	<0.01	0
15	WT	Coastal	<0.01	0
16	WW	Coastal	0.02	0
17	WV	Coastal	<0.01	0
		Riparian	<0.01	
18	WW	Coastal	0.07	0
19	WY	Riparian	0.05	0
20	WX	Riparian	<0.01	0
21	WZ	Non-riparian	<0.01	0
Total:			0.80	0

If you have any questions or need additional information, please contact Jason Dilday at 919-707-6111 or jldilday@ncdot.gov. A copy of this application will also be posted at <https://xfer.services.ncdot.gov/pdea/PermApps/>.

Sincerely,



Philip S. Harris III, P.E., C.P.M., Unit Head
Environmental Analysis Unit

cc: NCDOT Permit Application Standard Distribution List



September 28, 2018

Mr. Philip S. Harris, P.E.
Environmental Analysis Unit
North Carolina Department of Transportation
1598 Mail Service Center
Raleigh, North Carolina 27699-1598

Dear Mr. Harris:

Subject: EEP Mitigation Acceptance Letter:

R-5014, SR 1217 (Collington Road) Improvements from US 158 (Croatan Highway) to Existing Dead End, Dare County

The purpose of this letter is to notify you that the Division of Mitigation Services (DMS) will provide the wetland mitigation for the subject project. Based on the information supplied by you on September 24, 2018, the impacts are located in CU 03010205 of the Pasquotank River basin in the Northern Outer Coastal Plain (NOCP) Eco-Region, and are as follows:

Stream and Wetlands	River Basin	CU Location	Eco-Region	Stream			Wetlands		
				Cold	Cool	Warm	Riparian	Non-Riparian	Coastal Marsh
Impacts	Pasquotank	03010205	NOCP	0	0	0	0.67	0	0.13

*Some of the impacts may be proposed to be mitigated at a 1:1 mitigation ratio. See permit application for details.

This mitigation acceptance letter replaces the mitigation acceptance letters issued on April 27 and May 4, 2018. DMS commits to implementing sufficient compensatory wetland mitigation credits to offset the impacts associated with this project as determined by the regulatory agencies in accordance with the In-Lieu Fee Instrument dated July 28, 2010. If the above referenced impact amounts are revised, then this mitigation acceptance letter will no longer be valid and a new mitigation acceptance letter will be required from DMS

If you have any questions or need additional information, please contact Ms. Beth Harmon at 919-707-8420.

Sincerely,

James B. Stanfill
DMS Asset Management Supervisor

Cc: Mr. Kyle Barnes, USACE – Washington Regulatory Field Office
Ms. Amy Chapman, NC Division of Water Resources
File: R-5014 Revised



8/17/19

S S DENOTES IMPACTS IN SURFACE WATER

F F DENOTES FILL IN WETLAND

HC HC DENOTES HAND CLEARING

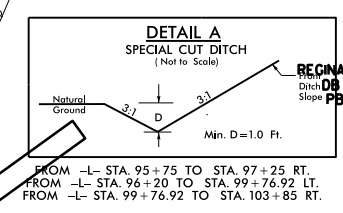
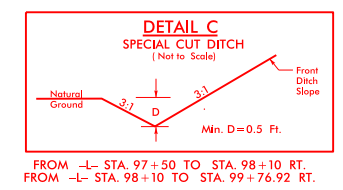
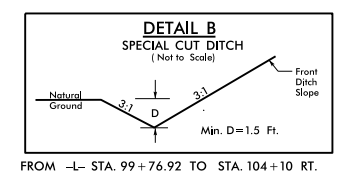
TS TS DENOTES TEMPORARY IMPACTS IN SURFACE WATER

- 50 LGLAND NC, LLC
DB 1673 - PG 409
PB G - PG 264
- 53 JANICE WILLIAMS O'NEAL
DB 365 - PG 842
- 58 JASPER DONNE GAMEL
DB 1664 - PG 389
PB D - PG 398
- 59 MAYNARD R. OUTLAW
DB 1390 - PG 278
PB D - PG 398
- 65 COLINGTON POINT DEVELOPERS, LLC
DB 1677 - PG 203
PB G - PG 300
- 66 COLINGTON POINT DEVELOPERS, LLC
DB 1702 - PG 237
PB G - PG 300

PERMIT DRAWING SHEET 16 OF 41

CALYX
ENGINEERS + CONSULTANTS
6750 TRYON ROAD
CARY, NC 27511
phone: 919.851.7112
CALYXengineer.com
NC License # F-333
Professional Seal Required

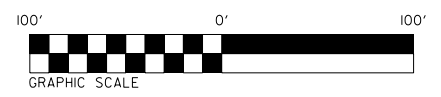
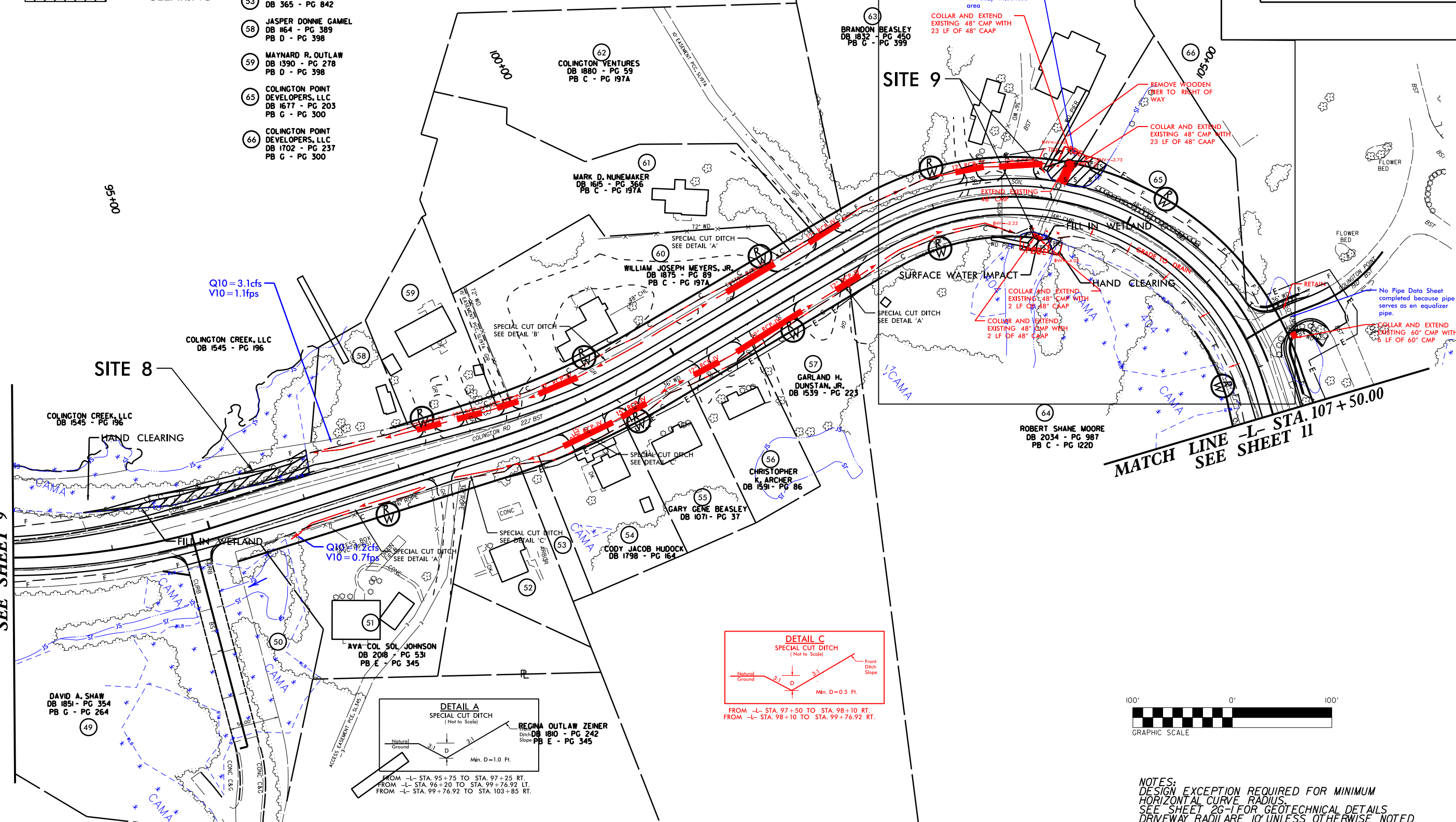
PROJECT REFERENCE NO. R-5014	SHEET NO. 10
ROADWAY DESIGN ENGINEER	HYDRAULICS ENGINEER
INCOMPLETE PLANS DO NOT USE FOR R/W ACQUISITION	
DOCUMENT NOT CONSIDERED FINAL UNLESS ALL SIGNATURES COMPLETED	



MATCH LINE -L- STA. 93+00.00
SEE SHEET 9

MATCH LINE -L- STA. 107+50.00
SEE SHEET 11

SEE SHEET 18 OF 41 FOR ENLARGEMENT



NOTES:
DESIGN EXCEPTION REQUIRED FOR MINIMUM HORIZONTAL CURVE RADIUS.
SEE SHEET 26-1 FOR GEOTECHNICAL DETAILS
DRIVEWAY RADII ARE 10' UNLESS OTHERWISE NOTED
SEE SHEET 23 AND 24 FOR -L- PROFILE
SEE SHEET 31 FOR -Y3B- AND -Y3C- PROFILE

8/17/99

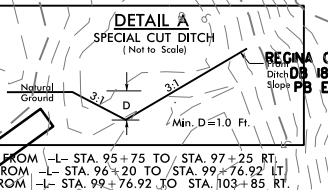
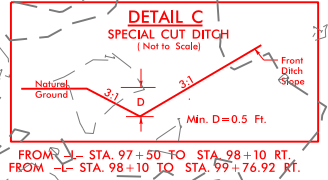
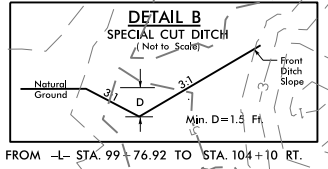
PERMIT DRAWING SHEET 17 OF 41

CALYX
 ENGINEERS + CONSULTANTS
 6750 TRYON ROAD
 CARY, NC 27511
 phone: 919.851.1712
 CALYXengineer.com
 NC License # F-333
 Federal Safety Engineer & Consultant

PROJECT REFERENCE NO. R-5014	SHEET NO. 10
ROADWAY DESIGN ENGINEER	HYDRAULICS ENGINEER
INCOMPLETE PLANS DO NOT USE FOR R/W ACQUISITION	
DOCUMENT NOT CONSIDERED FINAL UNLESS ALL SIGNATURES COMPLETED	

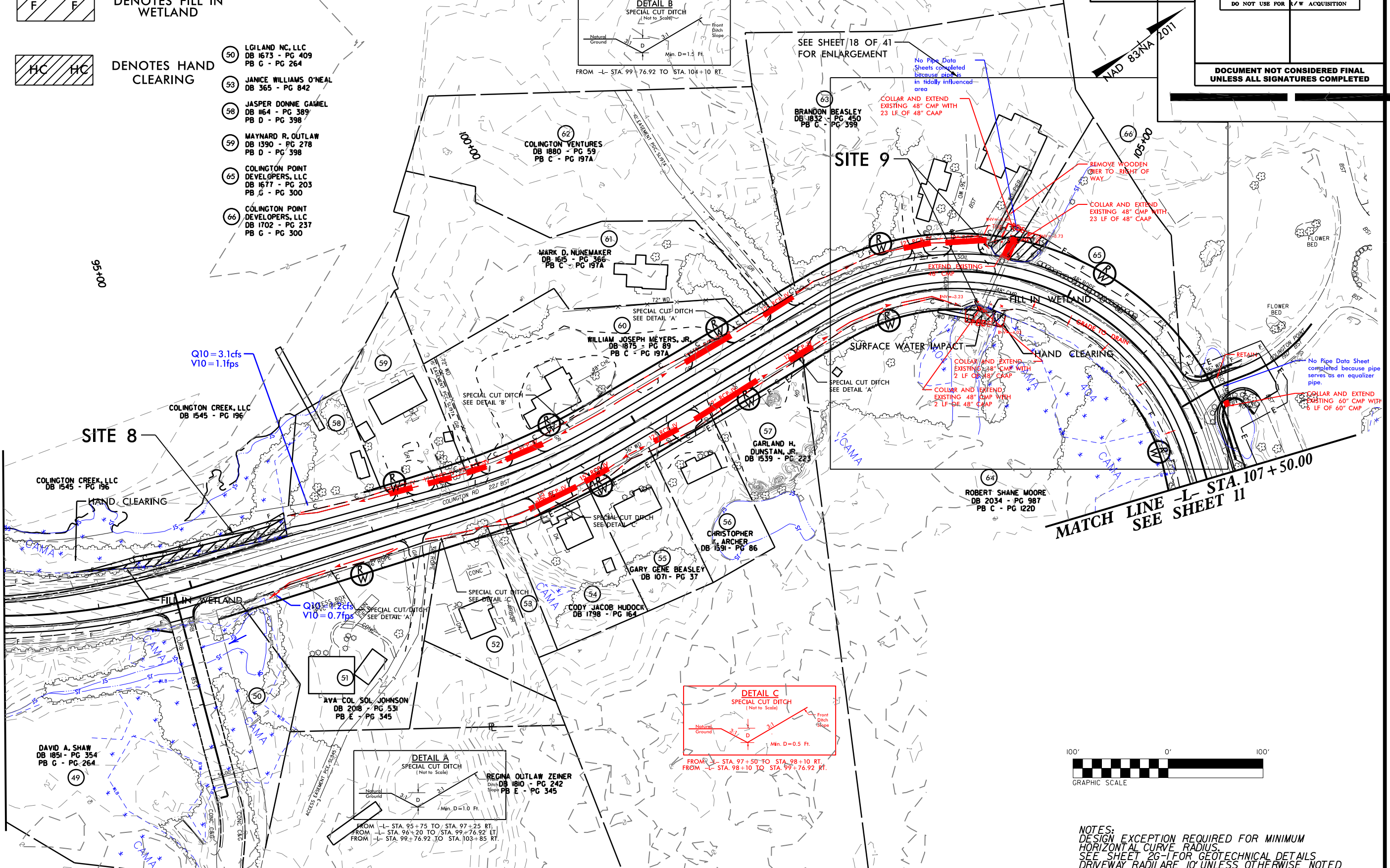
- DENOTES IMPACTS IN SURFACE WATER
- DENOTES FILL IN WETLAND
- DENOTES HAND CLEARING
- DENOTES TEMPORARY IMPACTS IN SURFACE WATER

- 50 LGLAND NC, LLC
DB 1673 - PG 409
PB G - PG 264
- 53 JANICE WILLIAMS O'NEAL
DB 365 - PG 842
- 58 JASPER DONNE GAMEL
DB 1664 - PG 389
PB D - PG 398
- 59 MAYNARD R. OUTLAW
DB 1390 - PG 278
PB D - PG 398
- 65 COLINGTON POINT DEVELOPERS, LLC
DB 1677 - PG 203
PB G - PG 300
- 66 COLINGTON POINT DEVELOPERS, LLC
DB 1702 - PG 237
PB G - PG 300



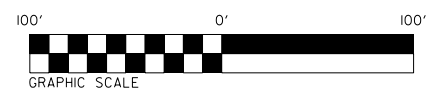
MATCH LINE -L- STA. 93+00.00
SEE SHEET 9

MATCH LINE -L- STA. 107+50.00
SEE SHEET 11



Q10 = 3.1cfs
V10 = 1.1fps

Q10 = 1.2cfs
V10 = 0.7fps

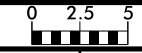


NOTES:
 DESIGN EXCEPTION REQUIRED FOR MINIMUM HORIZONTAL CURVE RADIUS.
 SEE SHEET 26-I FOR GEOTECHNICAL DETAILS.
 DRIVEWAY RADII ARE 10' UNLESS OTHERWISE NOTED.
 SEE SHEET 23 AND 24 FOR -L- PROFILE.
 SEE SHEET 31 FOR -Y3B- AND -Y3C- PROFILE.

REVISIONS

9/19/2018
 beanderson
 R:\Hydraulics\PERMITS_Environmental Drawings_R-5014_Hyd_prm_wet_psh10.dgn

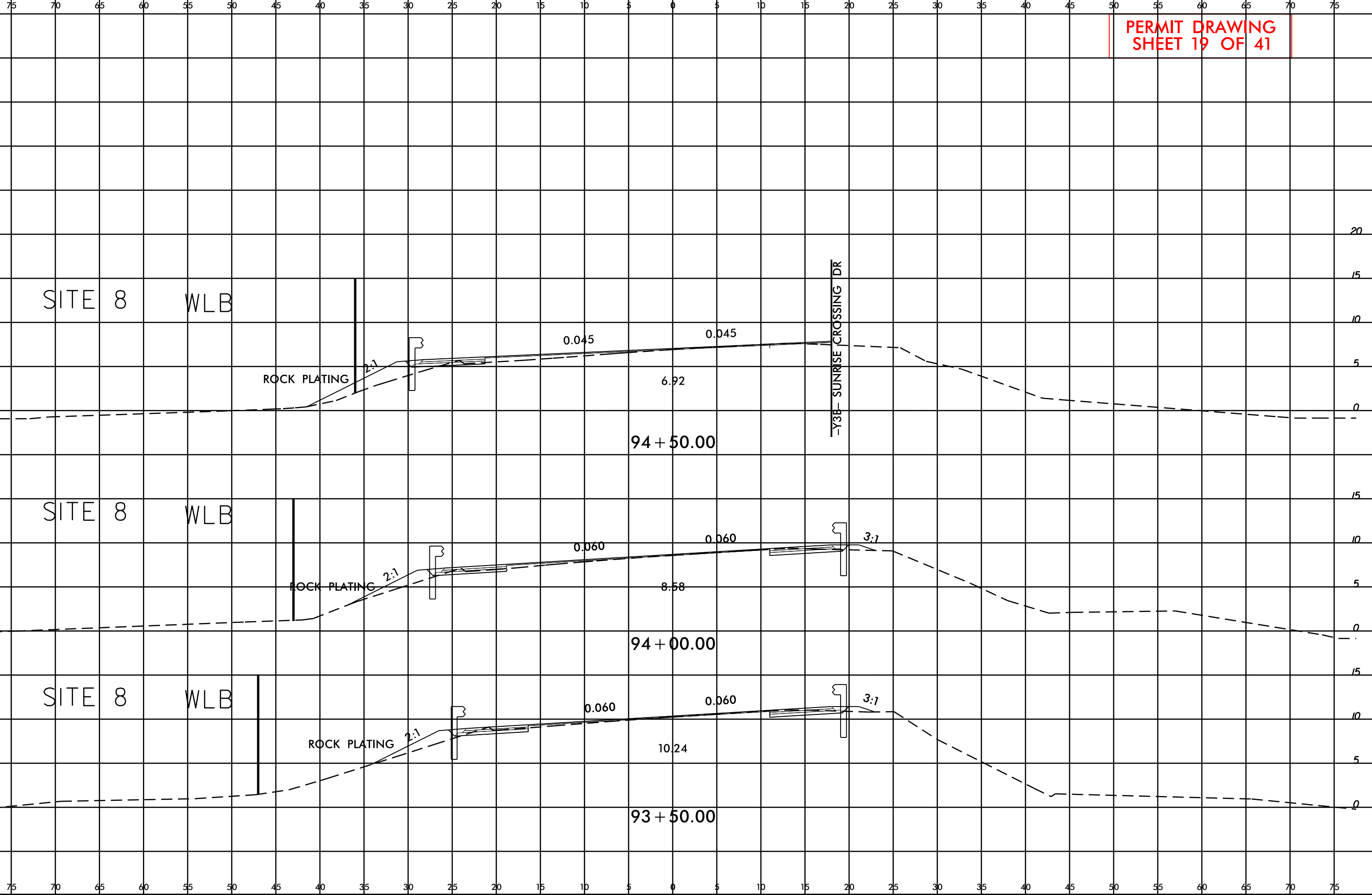
8/23/99



PROJ. REFERENCE NO.
R-5014

SHEET NO.
X-41

**PERMIT DRAWING
SHEET 19 OF 41**



9/19/2018
 beanderson
 R:\Hydraulics\PERMITS_Environmental\Drawings\xsc\R-5014_Hyd_XPL_41.dgn
 \$\$\$\$SYTIME\$\$\$\$
 \$\$\$\$PLOTICON\$\$\$\$
 \$\$\$\$USERNAME\$\$\$\$

WETLAND AND SURFACE WATER IMPACTS SUMMARY

Site No.	Station (From/To)	Structure Size / Type	WETLAND IMPACTS					SURFACE WATER IMPACTS				
			Permanent Fill In Wetlands (ac)	Temp. Fill In Wetlands (ac)	Excavation in Wetlands (ac)	Mechanized Clearing in Wetlands (ac)	Hand Clearing in Wetlands (ac)	Permanent SW impacts (ac)	Temp. SW impacts (ac)	Existing Channel Impacts Permanent (ft)	Existing Channel Impacts Temp. (ft)	Natural Stream Design (ft)
1	L Sta 53+87 to 55+73 Lt	Roadway fill	0.04				0.02					
2	L Sta 56+26 to 56+50 Lt/Rt	Culvert Extension	< 0.01		< 0.01		< 0.01	0.02	0.02	4	8	
3	L Sta 61+37 Rt	Roadway fill	< 0.01				< 0.01					
4	L Sta 66+13 to 70+24 Lt	Roadway fill	0.22				0.05					
5	L Sta 71+55 to 73+86 Rt	Roadway fill / Culvert	0.28				0.03					
6	L Sta 75+16 TO 76+73 Rt	Culvert / Roadway fill	0.02				0.03					
7	L Sta 85+34 to 88+03 Rt	Roadway fill	0.04				0.02					
8	L Sta 93+00 to 96+16 Lt	Roadway fill	0.04				0.02					
9	L Sta 103+90 to 104+62 Lt/Rt	Culvert Extension	< 0.01				< 0.01	0.02	0.02			
10	L Sta 108+75 to 109+77 Rt	Tail Ditch					0.02					
11	L Sta 116+55 to 117+54 Lt	Roadway Ditch / Tail Ditch			< 0.01		< 0.01					
12	L Sta 126+78 to 127+40 Lt	Culvert Extension/Roadway fill	< 0.01				< 0.01	0.02	0.01			
13	L Sta 129+64 to 130+19 Lt	Roadway fill	< 0.01				< 0.01					
14	L Sta 135+70 to 136+10 Lt	Roadway fill	< 0.01				< 0.01					
15	L Sta. 139+07 Lt	Roadway fill	< 0.01				< 0.01					
16	L Sta 163+08 to 167+40 Lt	Roadway fill	0.02					< 0.01				
17	L Sta 166+91 to 169+80 Rt	Roadway fill	< 0.01				0.03					
18	L Sta. 167+81 to 173+51 Lt	Roadway fill	0.07				0.03					
19	L Sta 174+77 to 176+84 Lt	Roadway fill	0.05				0.03					
20	L Sta. 175+29 to 175+95 Rt	Roadway fill	< 0.01				0.01					
21	L Sta 179+50 Rt	Roadway fill	< 0.01				< 0.01					
TOTALS*:			0.80		< 0.01		0.32	0.08	0.05	4	8	0

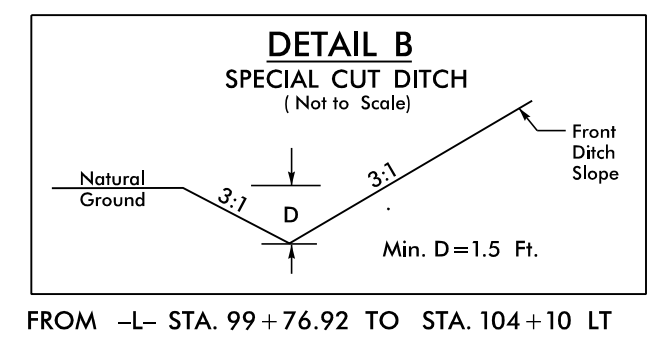
*Rounded totals are sum of actual impacts
 NOTES: ***Quantities shown below are included in the above totals***
 Site 2: 4.4 sqft of fill in CAMA wetland due to roadway fill.
 Site 5: 0.10 acres total take of wetlands per 4B comment
 Site 8: 0.04 acres of fill and 0.02 acres of hand clearing in CAMA wetland due to roadway fill.
 Site 11: 7.4 sqft of excavation in CAMA wetland due to Roadway ditch and 22.7 sqft of hand clearing in CAMA wetland for tail ditch construction.
 Site 12: 7.4 sqft of fill and 0.008 acres of hand clearing in CAMA wetland due to roadway fill.
 Sites 14 & 15: 132 sqft of fill and 0.01 acres of hand clearing in CAMA wetland due to roadway fill.
 Site 16: 188 sqft of permanent fill in SAV due to 2:1 rock plated roadway fill slope. 653 sqft of fill in CAMA wetland due to roadway fill.
 Site 17: 55 sqft of fill and 0.01 acres of hand clearing in CAMA wetland due to roadway fill. 32 sqft of fill in 404 wetland due to roadway fill.
 Site 18: 0.07 acres of fill and 0.03 acres of hand clearing in CAMA wetland due to roadway fill.

NC DEPARTMENT OF TRANSPORTATION
 DIVISION OF HIGHWAYS
 9/19/18
 DARE
 R-5014
 41162.1.1
 SHEET 41 OF 41

8.17.17.99
R:\Projects\2018\Roadway\Proje\N5014.rdy_psh_10.dgn

-L-

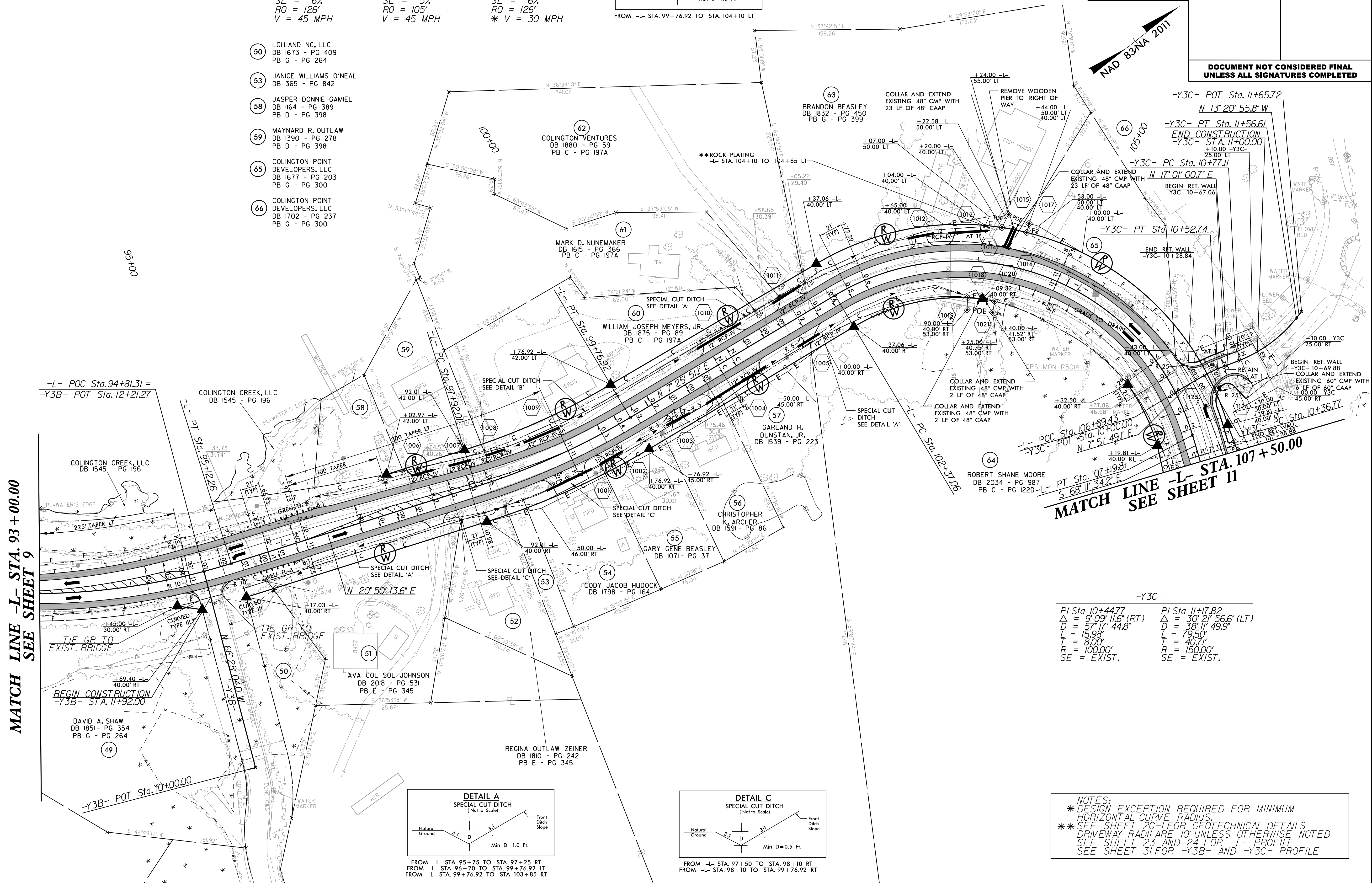
PI Sta 92+55.51 $\Delta = 43^{\circ}15'31.2" (LT)$ $D = 8^{\circ}00'00.0"$ $L = 540.73'$ $T = 283.99'$ $R = 716.20'$ $SE = 6\%$ $RO = 126'$ $V = 45 MPH$	PI Sta 98+84.89 $\Delta = 13^{\circ}24'22.6" (LT)$ $D = 7^{\circ}15'00.0"$ $L = 184.91'$ $T = 92.88'$ $R = 790.29'$ $SE = 5\%$ $RO = 105'$ $V = 45 MPH$	PI Sta 105+78.55 $\Delta = 104^{\circ}22'34.7" (RT)$ $D = 2^{\circ}37'15.8"$ $L = 482.75'$ $T = 341.49'$ $R = 265.00'$ $SE = 6\%$ $RO = 126'$ $* V = 30 MPH$
--	---	--



CALYX
ENGINEERS + CONSULTANTS
6750 TRYON ROAD
CARY, NC 27518
phone: 919.851.1912
CALYXengineers.com
NC License # F-1333
Formerly Haldix Engineers & Consultants

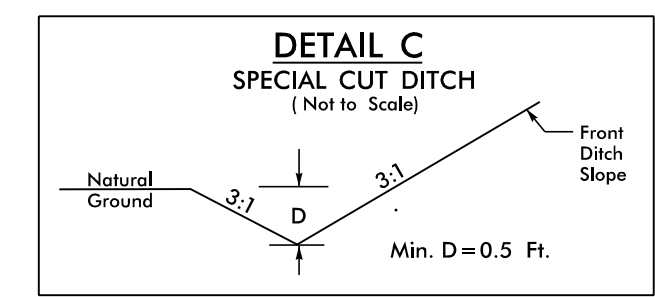
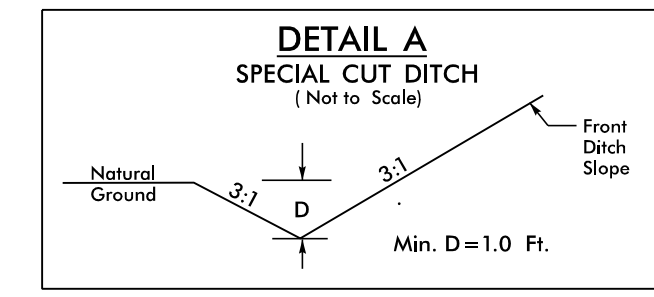
PROJECT REFERENCE NO. R-5014	SHEET NO. 10
RW SHEET NO. ROADWAY DESIGN ENGINEER	HYDRAULICS ENGINEER
DOCUMENT NOT CONSIDERED FINAL UNLESS ALL SIGNATURES COMPLETED	

- 50 LGLAND NC, LLC
DB 1673 - PG 409
PB G - PG 264
- 53 JANICE WILLIAMS O'NEAL
DB 365 - PG 842
- 58 JASPER DONNIE GAMIEL
DB 1164 - PG 389
PB D - PG 398
- 59 MAYNARD R. OUTLAW
DB 1390 - PG 278
PB D - PG 398
- 65 COLINGTON POINT DEVELOPERS, LLC
DB 1677 - PG 203
PB G - PG 300
- 66 COLINGTON POINT DEVELOPERS, LLC
DB 1702 - PG 237
PB G - PG 300



MATCH LINE -L- STA. 93 + 00.00
SEE SHEET 9

MATCH LINE -L- STA. 107 + 50.00
SEE SHEET 11



-Y3C-

PI Sta 10+44.77 $\Delta = 9^{\circ}09'11.6" (RT)$ $D = 57^{\circ}17'44.8"$ $L = 15.98'$ $T = 8.00'$ $R = 100.00'$ $SE = EXIST.$	PI Sta 11+17.82 $\Delta = 30^{\circ}21'56.6" (LT)$ $D = 38^{\circ}11'49.9"$ $L = 79.50'$ $T = 40.71'$ $R = 150.00'$ $SE = EXIST.$
---	---

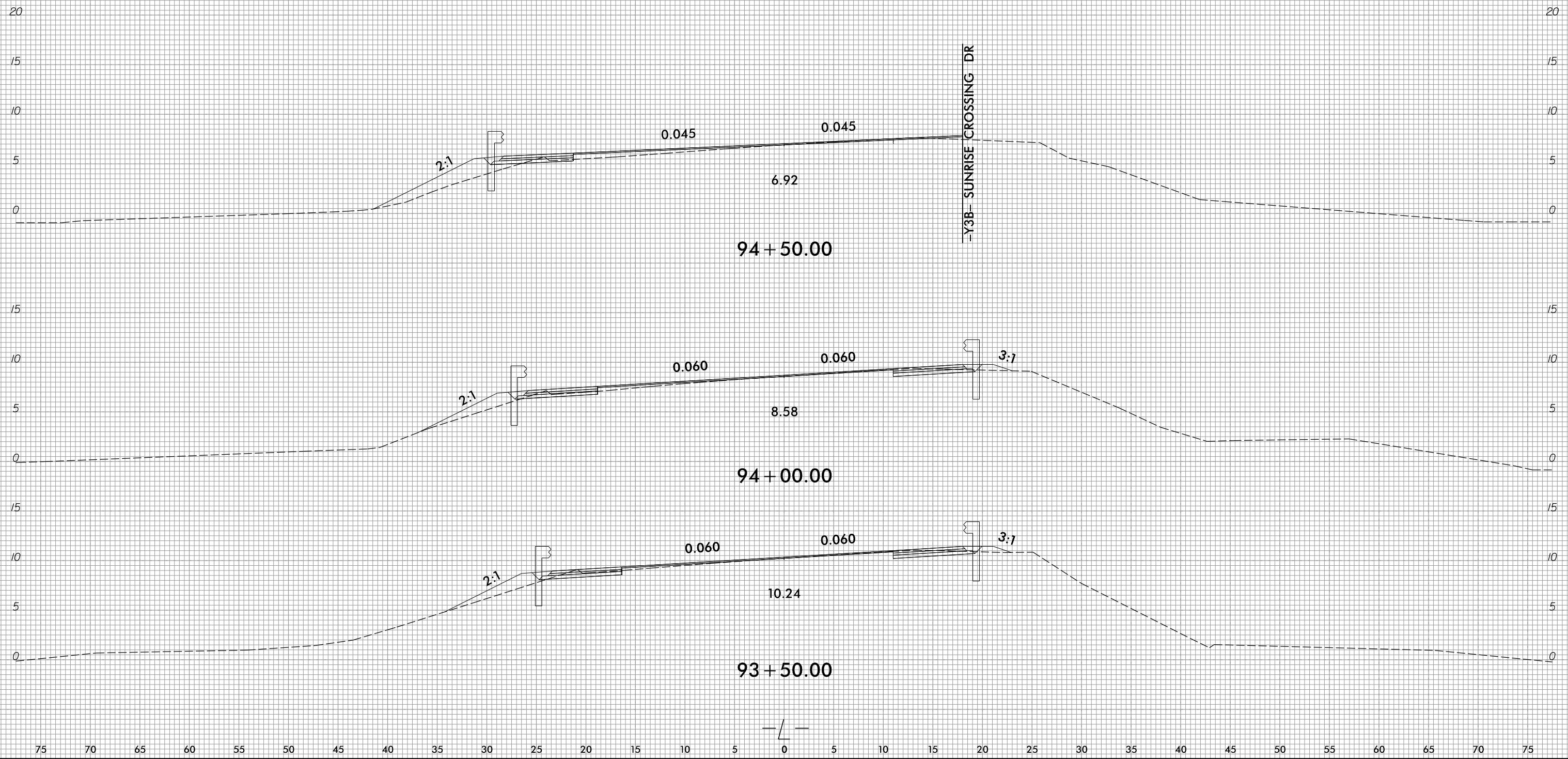
NOTES:
* DESIGN EXCEPTION REQUIRED FOR MINIMUM HORIZONTAL CURVE RADIUS.
** SEE SHEET 26-1 FOR GEOTECHNICAL DETAILS DRIVEWAY RADIARE 10' UNLESS OTHERWISE NOTED
SEE SHEET 23 AND 24 FOR -L- PROFILE
SEE SHEET 31 FOR -Y3B- AND -Y3C- PROFILE

8/23/99



PROJ. REFERENCE NO.	SHEET NO.
R-5014	X-41

75 70 65 60 55 50 45 40 35 30 25 20 15 10 5 0 5 10 15 20 25 30 35 40 45 50 55 60 65 70 75

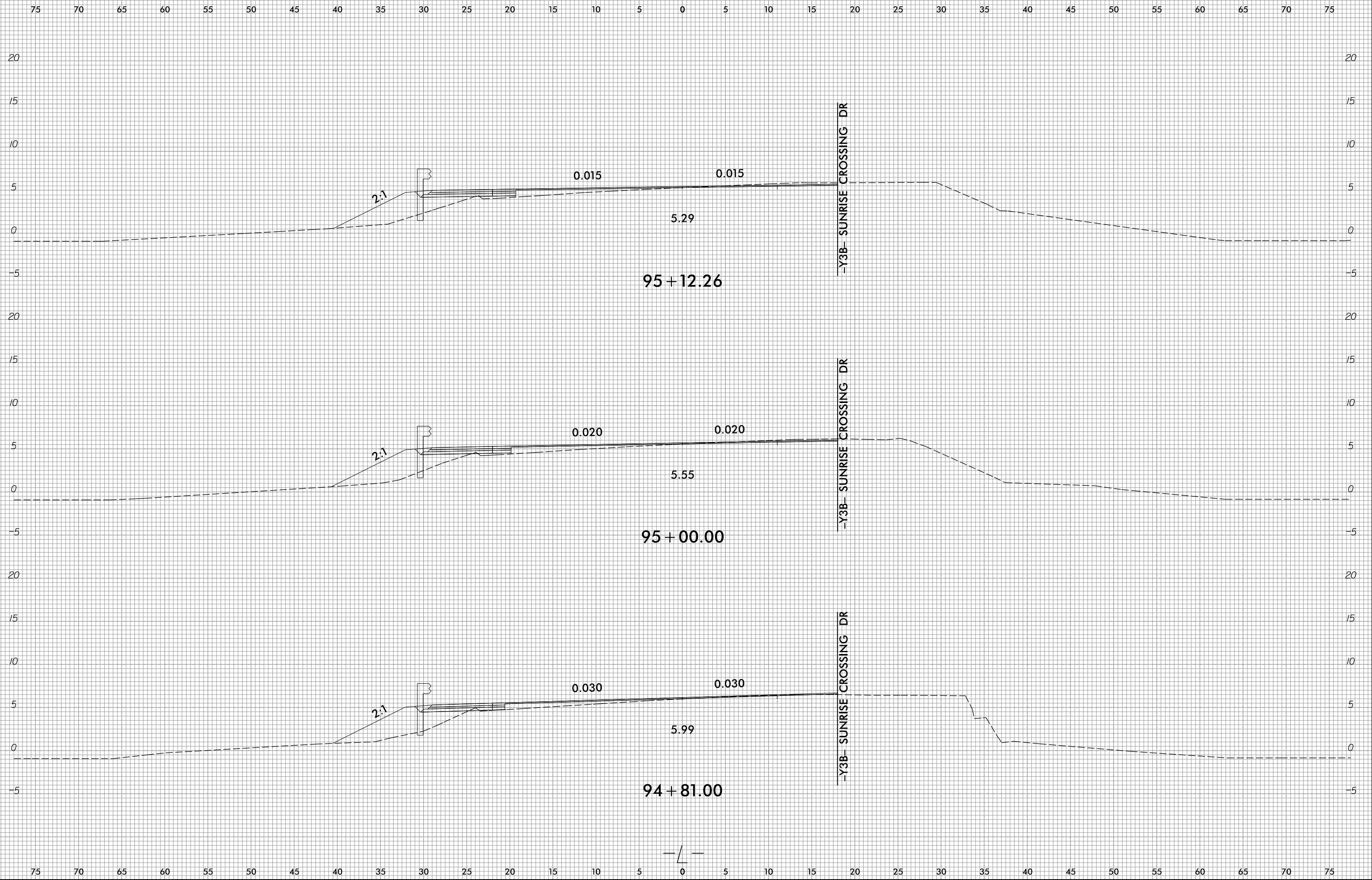


9/12/2018
 R:\Roadway\CorridorModeling\R5014_Rdy_XPL_L.dgn
 8:05:10

8/23/99

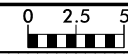


PROJ. REFERENCE NO.	SHEET NO.
R-5014	X-42

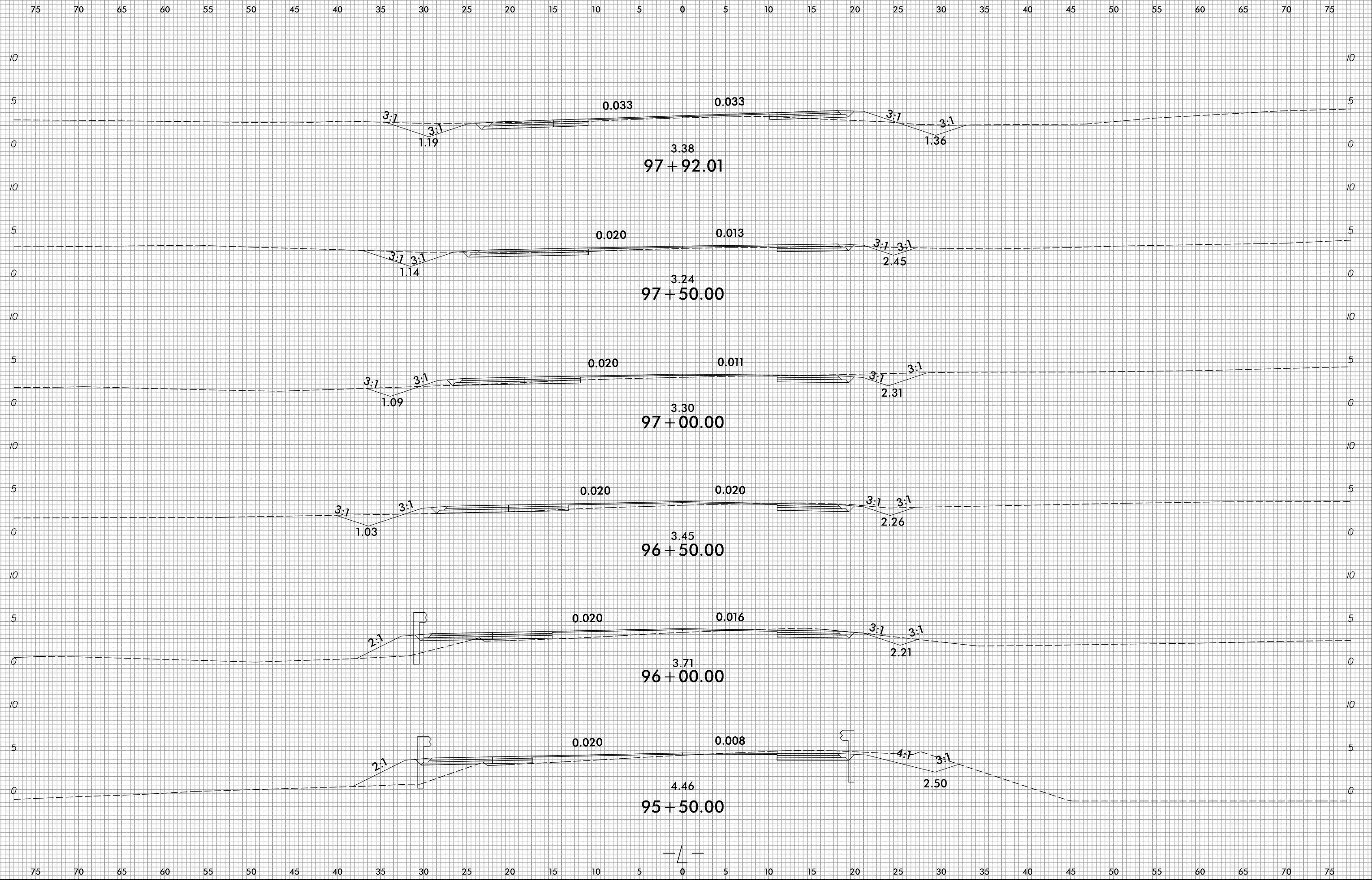


9/12/2018
 R:\Roadway\CorridorModeling\R5014_Rdy_XPL_L.dgn
 8:05:16

8/23/99



PROJ. REFERENCE NO.	SHEET NO.
R-5014	X-43



9/12/2018 R:\Roadway\CorridorModeling\R5014_Rdy_XPL_L.dgn