

R-2576 Mid-Currituck Bridge

Attachment 5:

# **Wetland Utility Impacts Permit Drawings**

09/28/19

See Sheet 1A For Index of Sheets  
See Sheet 1B For Conventional Symbols  
See Sheet 1C For Survey Control Sheet

STATE OF NORTH CAROLINA  
DIVISION OF HIGHWAYS

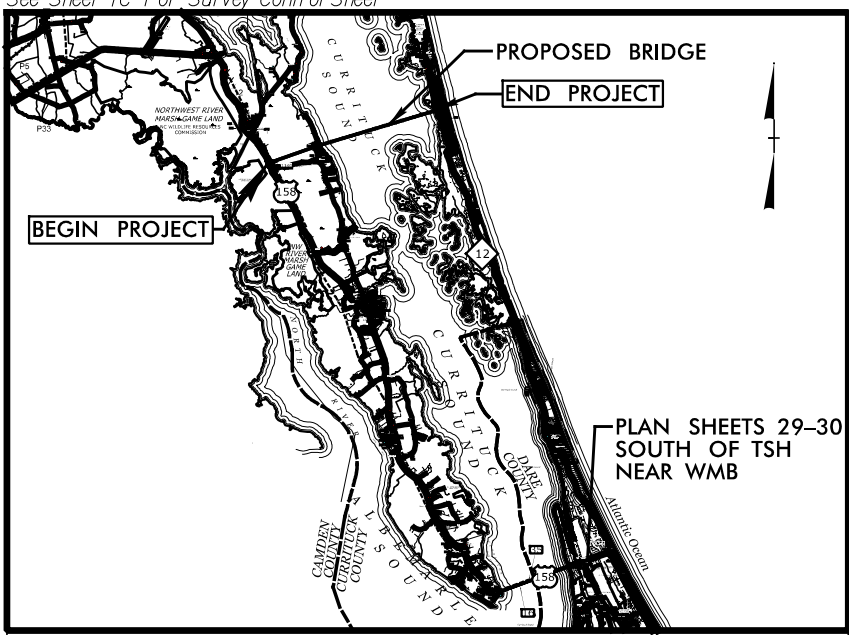
STATE	STATE PROJECT REFERENCE NO.	SHEET NO.	TOTAL SHEETS
N.C.	R-2576	1	
STATE PROJ. NO.	F.A. PROJ. NO.	DESCRIPTION	
34470.1.TA1	BRSTP-000(494)	P.E.	

# CURRITUCK & DARE COUNTIES

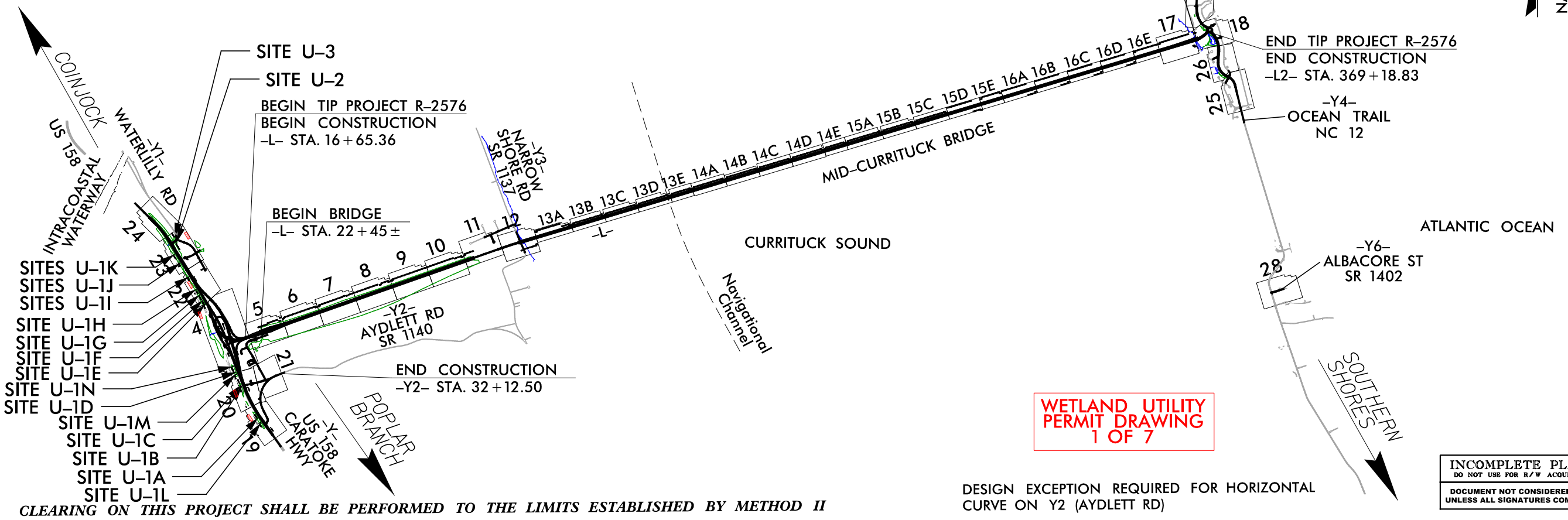
LOCATION: MID-CURRITUCK BRIDGE FROM US 158 SOUTH OF COINJOCK TO NC 12 SOUTH OF COROLLA

TYPE OF WORK: GRADING, DRAINAGE, PAVING, AND STRUCTURES

TIP PROJECT: R-2576



VICINITY MAP

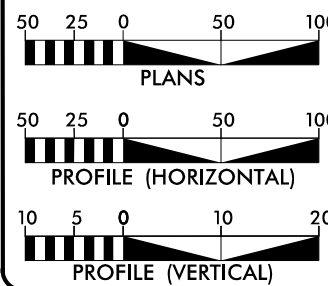


WETLAND UTILITY PERMIT DRAWING  
1 OF 7

DESIGN EXCEPTION REQUIRED FOR HORIZONTAL CURVE ON Y2 (AYDLETT RD)

INCOMPLETE PLANS  
DO NOT USE FOR R/W ACQUISITION  
DOCUMENT NOT CONSIDERED FINAL  
UNLESS ALL SIGNATURES COMPLETED

GRAPHIC SCALES



DESIGN DATA

# ADT 2020 = 11,800  
ADT 2040 = 18,000  
K = 9 %  
D = 60 %  
T = 7 % \*  
V = 60 MPH  
\* (TTST=2) + (DUAL=1)  
+ (RV=4)  
FUNC CLASS =  
ARTERIAL STATEWIDE TIER

PROJECT LENGTH

LENGTH ROADWAY TIP PROJECT R-2576 = 0.524 Miles  
LENGTH STRUCTURES = 6.153 Miles  
TOTAL LENGTH TIP PROJECT R-2576 = 6.677 Miles

# PROJECT LEVEL TRAFFIC FORECAST (JUNE 2016) (SUMMER WEEKEND)

Prepared In the Office of:

**LOCHNER**  
TRANSPORTATION ENGINEERING  
1223 Jones Franklin Rd.  
Raleigh, NC 27606  
2840 PLAZA PLACE, SUITE 202  
RALEIGH, NC 27612  
(919) 571-7111  
NC License Number F-0159

2024 STANDARD SPECIFICATIONS

RIGHT OF WAY DATE:  
FY 2026

LETTING DATE:  
FY 2026

BRIAN K. EASON, PE  
PROJECT ENGINEER

CHRISTINA L. YOKELEY, PE  
PROJECT DESIGN ENGINEER

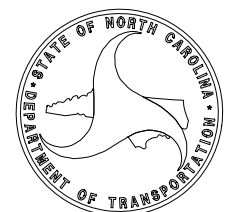
DENNIS JERNIGAN, PE  
NCDOT /NCTA

HYDRAULICS ENGINEER

SIGNATURE: \_\_\_\_\_ P.E.

ROADWAY DESIGN ENGINEER

SIGNATURE: \_\_\_\_\_ P.E.



CONTRACT:

2/5/2024  
R2576\_rdy\_TSH.dgn  
ACHODD

NO.	DESCRIPTION

**LOCHNER**  
 2840 PLAZA PLACE SUITE 202  
 RALEIGH, NC 27612  
 (919) 271-7111

PROJECT REFERENCE NO. **R-2576** SHEET NO. **4**

ROADWAY DESIGN ENGINEER

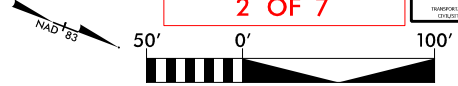
HYDRAULIC ENGINEER

**INCOMPLETE PLANS**  
 NOT FOR CONSTRUCTION

DOCUMENT NOT CONSIDERED FINAL UNLESS ALL SIGNATURES COMPLETED

**PAVED SHOULDER**

**WETLAND UTILITY PERMIT DRAWING**  
**2 OF 7**



-Y- NB-		-Y- SB-		-Y- NB-		-Y- SB-		-Y- NB-		-Y- SB-		-Y- NB-		-Y- SB-	
PI Sta 54+10.60	PI Sta 57+47.38	PI Sta 60+183.40	PI Sta 31+05.35	PI Sta 37+51.49	PI Sta 43+82.33	PI Sta 11+33.35	PI Sta 13+187.76	PI Sta 16+143.39	PI Sta 19+10.06	PI Sta 22+687.3	PI Sta 26+124.46	PI Sta 28+180.3	PI Sta 31+792.9	PI Sta 34+617.7	PI Sta 37+461.7
Δ = 7° 34' 32.3"	Δ = 7° 32' 10.4" (LT)	Δ = 7° 34' 32.3"	Δ = 2° 57' 53.2"	Δ = 2° 07' 43.1" (LT)	Δ = 2° 57' 53.2"	Δ = 2° 28' 17.2"	Δ = 2° 28' 17.2"	Δ = 2° 28' 17.2"	Δ = 2° 28' 17.2"	Δ = 14° 10' 01.7" (RT)	Δ = 2° 28' 17.2"	Δ = 2° 28' 17.2"	Δ = 10° 41' 31.9" (LT)	Δ = 2° 28' 17.2"	Δ = 2° 28' 17.2"
Ls = 220.00'	Ls = 220.00'	Ls = 220.00'	Ls = 270.00'	Ls = 270.00'	Ls = 270.00'	Ls = 270.00'	Ls = 270.00'	Ls = 270.00'	Ls = 270.00'	Ls = 270.00'	Ls = 270.00'	Ls = 270.00'	Ls = 270.00'	Ls = 270.00'	Ls = 270.00'
LT = 146.67'	LT = 58.613'	LT = 146.67'	LT = 180.02'	LT = 180.02'	LT = 180.02'	LT = 133.35'	LT = 133.35'	LT = 133.35'	LT = 133.35'	LT = 133.35'	LT = 133.35'	LT = 133.35'	LT = 44.27'	LT = 133.35'	LT = 133.35'
ST = 73.34'	ST = 263.44'	ST = 73.34'	ST = 90.02'	ST = 90.02'	ST = 90.02'	ST = 66.68'	ST = 66.68'	ST = 66.68'	ST = 66.68'	ST = 66.68'	ST = 66.68'	ST = 66.68'	ST = 222.00'	ST = 66.68'	ST = 66.68'
R = 4000.00'	R = 2634.4'	R = 4000.00'	R = 2700.00'	R = 2700.00'	R = 2700.00'	R = 2350.00'	R = 2350.00'	R = 2350.00'	R = 2350.00'	R = 2350.00'	R = 2350.00'	R = 2350.00'	R = 2350.00'	R = 2350.00'	R = 2350.00'
SE = 0.05	SE = 0.05	SE = 0.05	SE = 0.05	SE = 0.05	SE = 0.05	SE = 0.05	SE = 0.05	SE = 0.05	SE = 0.05	SE = 0.05	SE = 0.05	SE = 0.05	SE = 0.05	SE = 0.05	SE = 0.05

DENOTES TEMPORARY FILL IN WETLAND

**SITE U-1D**  
 (TYP. DETAIL A, THIS SHEET)

**SITE U-1N**  
 (TYP. DETAIL C, THIS SHEET)

MATCHLINE SHEET 20  
 -Y- NB- STA. 16+50

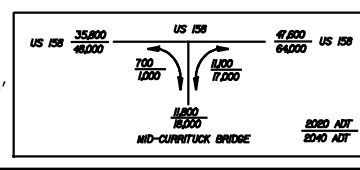
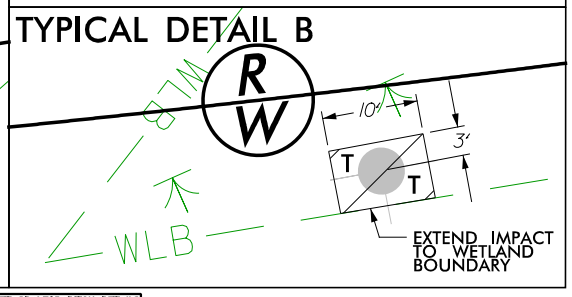
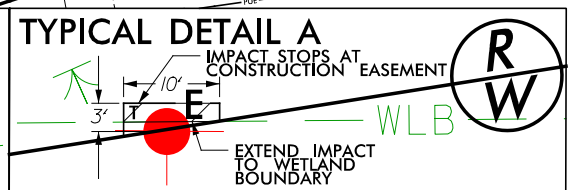
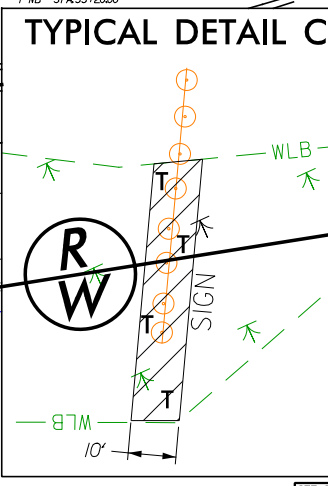
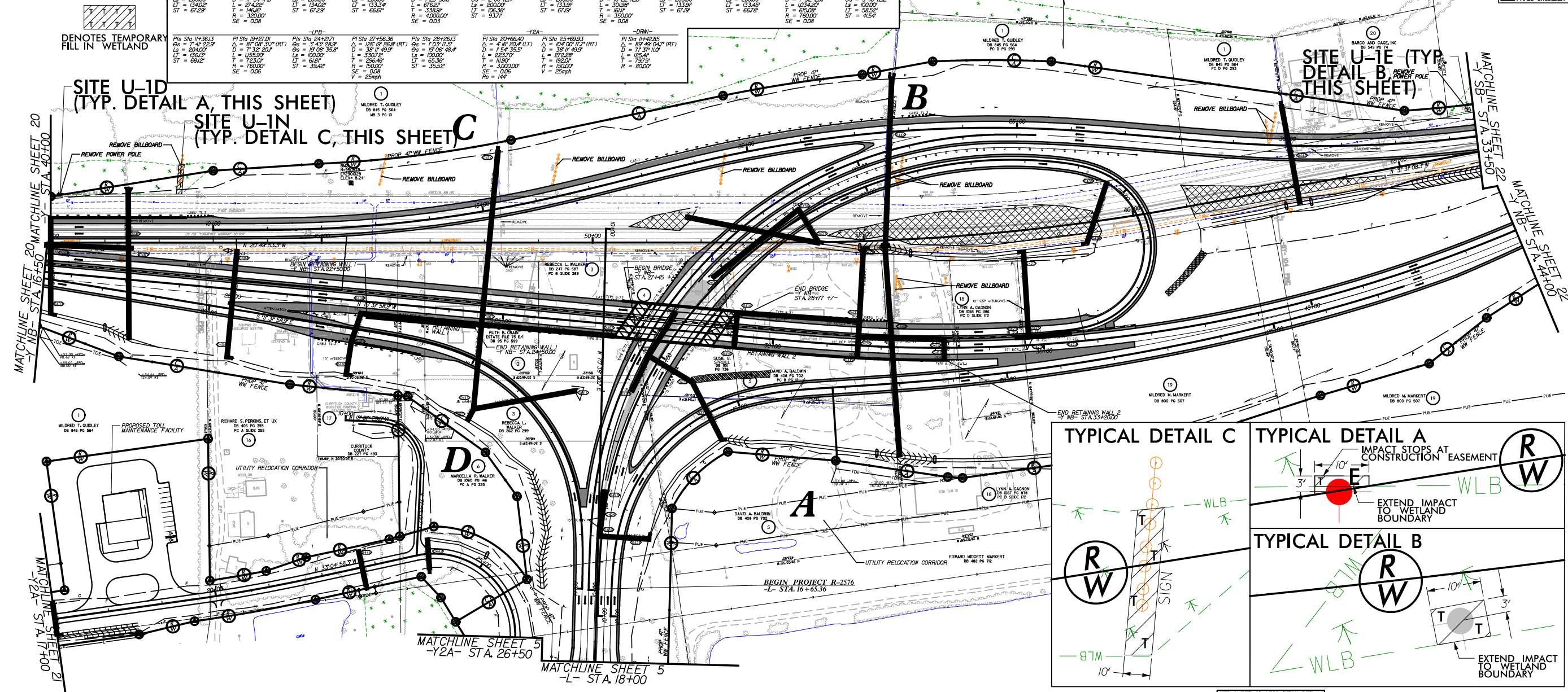
MATCHLINE SHEET 21  
 -Y2A- STA. 17+00

MATCHLINE SHEET 5  
 -Y2A- STA. 26+50

MATCHLINE SHEET 5  
 -L- STA. 18+00

MATCHLINE SHEET 22  
 -Y- SB- STA. 33+50

MATCHLINE SHEET 22  
 -Y- NB- STA. 44+00



SEE SHEET 20-1 FOR DITCH DETAILS  
 SEE SHEET 31 FOR -L- PROFILE  
 SEE SHEET 37 FOR -Y- PROFILE  
 SEE SHEET 39 FOR -Y2B- PROFILE  
 SEE SHEET 39-40 FOR -Y- NB- PROFILE  
 SEE SHEET 41-42 FOR -LPB- PROFILE  
 SEE SHEET 42 FOR -RPB- PROFILE  
 SEE SHEET 43 FOR -RPA- PROFILE  
 SEE SHEET 44 FOR -RPD- PROFILE  
 SEE SHEET 46-47 FOR -Y2A- PROFILE  
 SEE SHEET 46 FOR -DRI- PROFILE

LOCATION: MID-CURRUCK PLAZA AT US 158 (24)
DATE: _____
DRAWN BY: _____
CHECKED BY: _____



6/2/99

# LOCHNER

H. W. LOCHNER, INC.  
2840 PLAZA PLACE, SUITE 202  
RALEIGH, NC 27612  
(919) 571-7111

NC License  
Number F-0159



1223 Jones Franklin Rd.  
Raleigh, N.C. 27606  
License No. F-0377  
Bus: 919 851 8077  
Fax: 919 851 8107

TRANSPORTATION PLANNING/DESIGN - BRIDGE/STRUCTURE DESIGN  
CIVIL/SITE DESIGN - GIS/GPS - CONSTRUCTION OBSERVATION

PROJECT REFERENCE NO. SHEET NO.

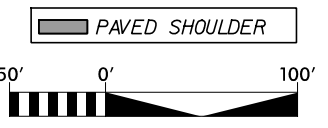
R-2576 19

ROADWAY DESIGN ENGINEER PAVEMENT DESIGN ENGINEER

**INCOMPLETE PLANS**  
DO NOT USE FOR R/W ACQUISITION

**DOCUMENT NOT CONSIDERED FINAL**  
UNLESS ALL SIGNATURES COMPLETED

**WETLAND UTILITY PERMIT DRAWING**  
**3 OF 7**



-Y-		
PIs Sta 21+52.26	PI Sta 27+75.58	PIs Sta 33+94.24
$\Theta_s = 0^\circ 55' 36.6''$	$\Delta = 12^\circ 43' 01.7''$ (RT)	$\Theta_s = 0^\circ 55' 36.6''$
$L_s = 165.00'$	$D = 1^\circ 07' 24.4''$	$L_s = 165.00'$
$LT = 110.00'$	$L = 1,131.98'$	$LT = 110.00'$
$ST = 55.00'$	$T = 568.32'$	$ST = 55.00'$
	$R = 5,100.00'$	
	$SE = 0.03$	

-Y2-		
PI Sta 11+70.00	PI Sta 25+7.49	
$\Delta = 81^\circ 32' 22.8''$ (LT)	$\Delta = 95^\circ 09' 21.1''$ (RT)	
$D = 36^\circ 57' 54.1''$	$D = 6^\circ 44' 26.4''$	
$L = 220.59'$	$L = 1,411.67'$	
$T = 133.65'$	$T = 930.15'$	
$R = 155.00'$	$R = 850.00'$ **	
$SE = 0.06$	$SE = 0.06$	
$Ro = 144'$	$Ro = 144'$	

\*\* DESIGN EXCEPTION REQUIRED FOR HORIZONTAL CURVE

DENOTES TEMPORARY FILL IN WETLAND



SUZANNE LEA MIDGETT TRUSTEE  
UNDER THE JAMES A. MIDGETT & MARY THOMPSON MIDGETT  
IRREVOCABLE TRUST  
DB 974 PG 425

14

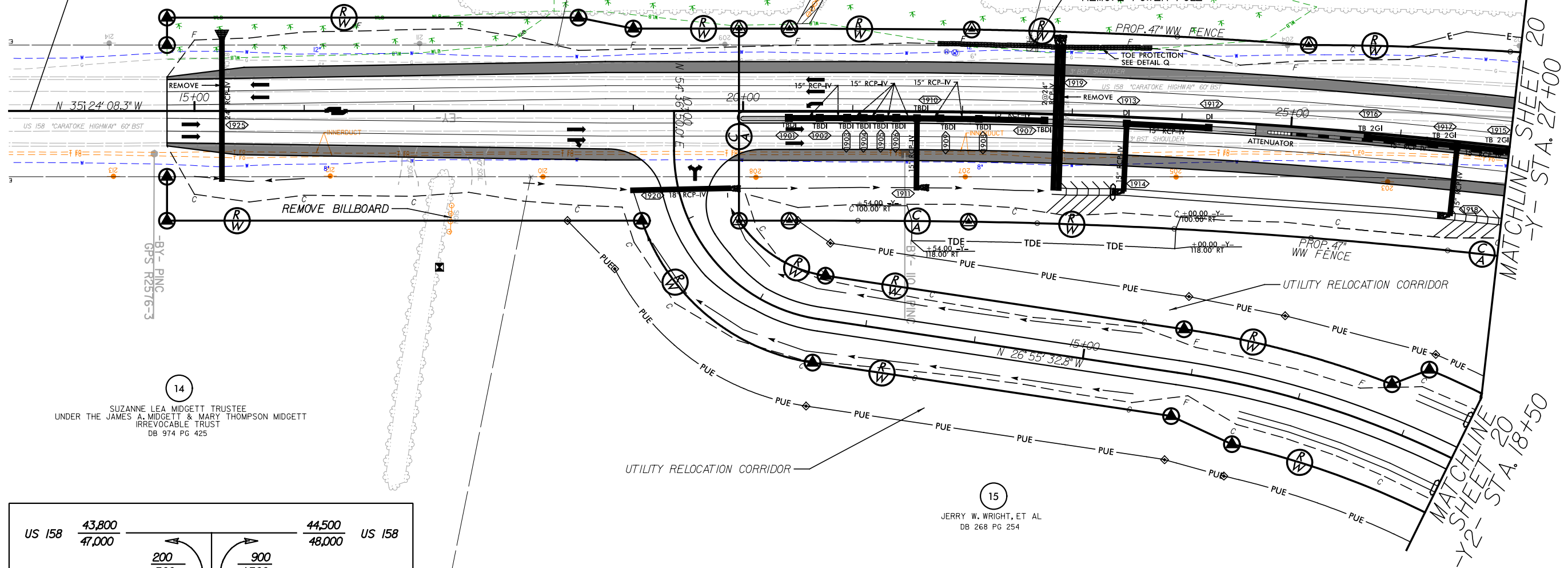
BEGIN CONSTRUCTION  
-Y- STA. 13+50.00

SITE U-1L  
(TYP. DETAIL C,  
DRAWING 2)

SITE U-1A  
(TYP. DETAIL B,  
DRAWING 2)

JERRY W. WRIGHT, ET AL  
DB 268 PG 254

15

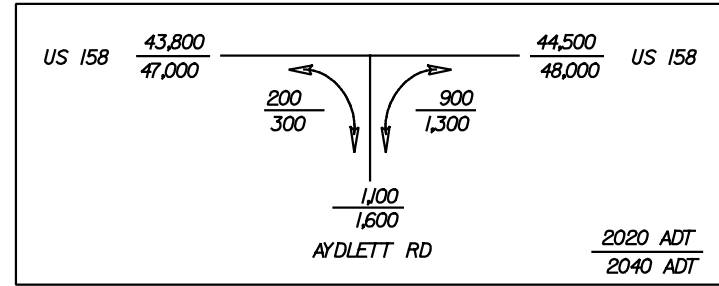


SUZANNE LEA MIDGETT TRUSTEE  
UNDER THE JAMES A. MIDGETT & MARY THOMPSON MIDGETT  
IRREVOCABLE TRUST  
DB 974 PG 425

14

JERRY W. WRIGHT, ET AL  
DB 268 PG 254

15



SEE SHEET 2D-1 FOR DITCH DETAILS  
SEE SHEET 36 FOR -Y- PROFILE  
SEE SHEET 45 FOR -Y2- PROFILE

2/5/2024  
R:\2576\_P\dy\_psh19\_Utl1.tj\Impacts.dgn

6/2/99

# LOCHNER

H. W. LOCHNER, INC.  
2840 PLAZA PLACE, SUITE 202  
RALEIGH, NC 27612  
(919) 571-7111

NC License  
Number F-0159



1223 Jones Franklin Rd.  
Raleigh, N.C. 27606  
License No. F-0377  
Bus: 919 851 8077  
Fax: 919 851 8107

TRANSPORTATION PLANNING/DESIGN - BRIDGE/STRUCTURE DESIGN  
CIVIL/SITE DESIGN - GIS/GPS - CONSTRUCTION OBSERVATION

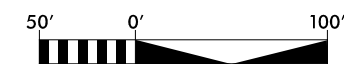
PROJECT REFERENCE NO. **R-2576** SHEET NO. **20**

ROADWAY DESIGN ENGINEER PAVEMENT DESIGN ENGINEER

**INCOMPLETE PLANS**  
DO NOT USE FOR R/W ACQUISITION

**DOCUMENT NOT CONSIDERED FINAL**  
UNLESS ALL SIGNATURES COMPLETED

## WETLAND UTILITY PERMIT DRAWING 4 OF 7



-Y-			
Pls Sta 21+52.26	Pls Sta 27+75.58	Pls Sta 33+94.24	
$\Theta_s = 0' 55' 36.6"$	$\Delta = 12' 43' 01.7" (RT)$	$\Theta_s = 0' 55' 36.6"$	
Ls = 165.00'	D = 1' 07' 24.4"	Ls = 165.00'	
LT = 110.00'	L = 1,131.98'	LT = 110.00'	
ST = 55.00'	T = 568.32'	ST = 55.00'	
	R = 5,100.00'		
	SE = 0.03		
-Y-NB-			
Pls Sta 12+34.73	Pls Sta 15+24.12	Pls Sta 25+17.49	Pls Sta 14+46.16
$\Delta = 5' 17' 39.2" (RT)$	$\Theta_s = 0' 55' 51.8"$	$\Delta = 95' 09' 21.1" (RT)$	$\Delta = 8' 07' 45.1" (LT)$
D = 1' 07' 42.7"	Ls = 165.00'	D = 6' 44' 26.4"	D = 2' 51' 53.2"
L = 469.12'	LT = 110.00'	L = 1,411.67'	L = 283.76'
T = 234.73'	ST = 55.00'	T = 930.15'	T = 142.12'
R = 5,077.00'		R = 850.00' **	R = 2,000.00'
SE = 0.03		SE = 0.06	Ro = 144'

\*\* DESIGN EXCEPTION REQUIRED FOR HORIZONTAL CURVE

DENOTES TEMPORARY FILL IN WETLAND

JERRY W. WRIGHT, ET AL  
DB 268 PG 254

1  
MILDRED T. QUIDLEY  
DB 845 PG 564  
MB 3 PG 10

1  
SITE U-1M  
(TYP. DETAIL C,  
DRAWING 2)

1  
SITE U-1C  
(TYP. DETAIL A,  
DRAWING 2)

1  
SITE U-1B  
(TYP. DETAIL A,  
DRAWING 2)

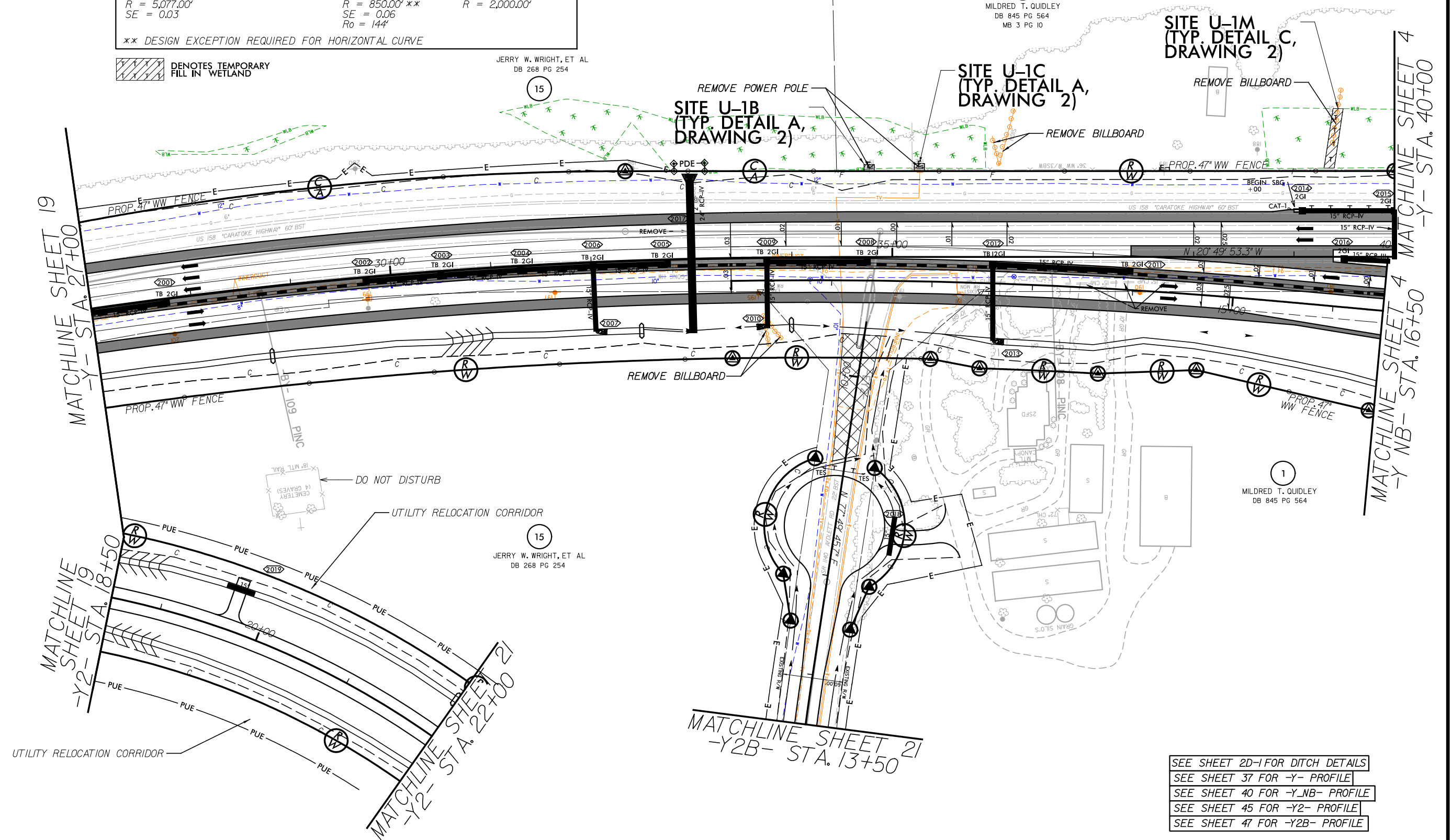
MATCHLINE SHEET 19  
-Y- STA. 27+00

MATCHLINE SHEET 19  
-Y2- STA. 18+50

MATCHLINE SHEET 21  
-Y2B- STA. 22+00

MATCHLINE SHEET 4  
-Y- STA. 40+00

MATCHLINE SHEET 4  
-Y NB- STA. 16+50



- SEE SHEET 20-I FOR DITCH DETAILS
- SEE SHEET 37 FOR -Y- PROFILE
- SEE SHEET 40 FOR -Y-NB- PROFILE
- SEE SHEET 45 FOR -Y2- PROFILE
- SEE SHEET 47 FOR -Y2B- PROFILE

2/5/2024  
R2576\_Pdu\_psh20\_UtilityImpacts.dgn

6/2/99



**LOCHNER**  
 H. W. LOCHNER, INC.  
 2840 PLAZA PLACE, SUITE 202  
 RALEIGH, NC 27612  
 (919) 571-7111

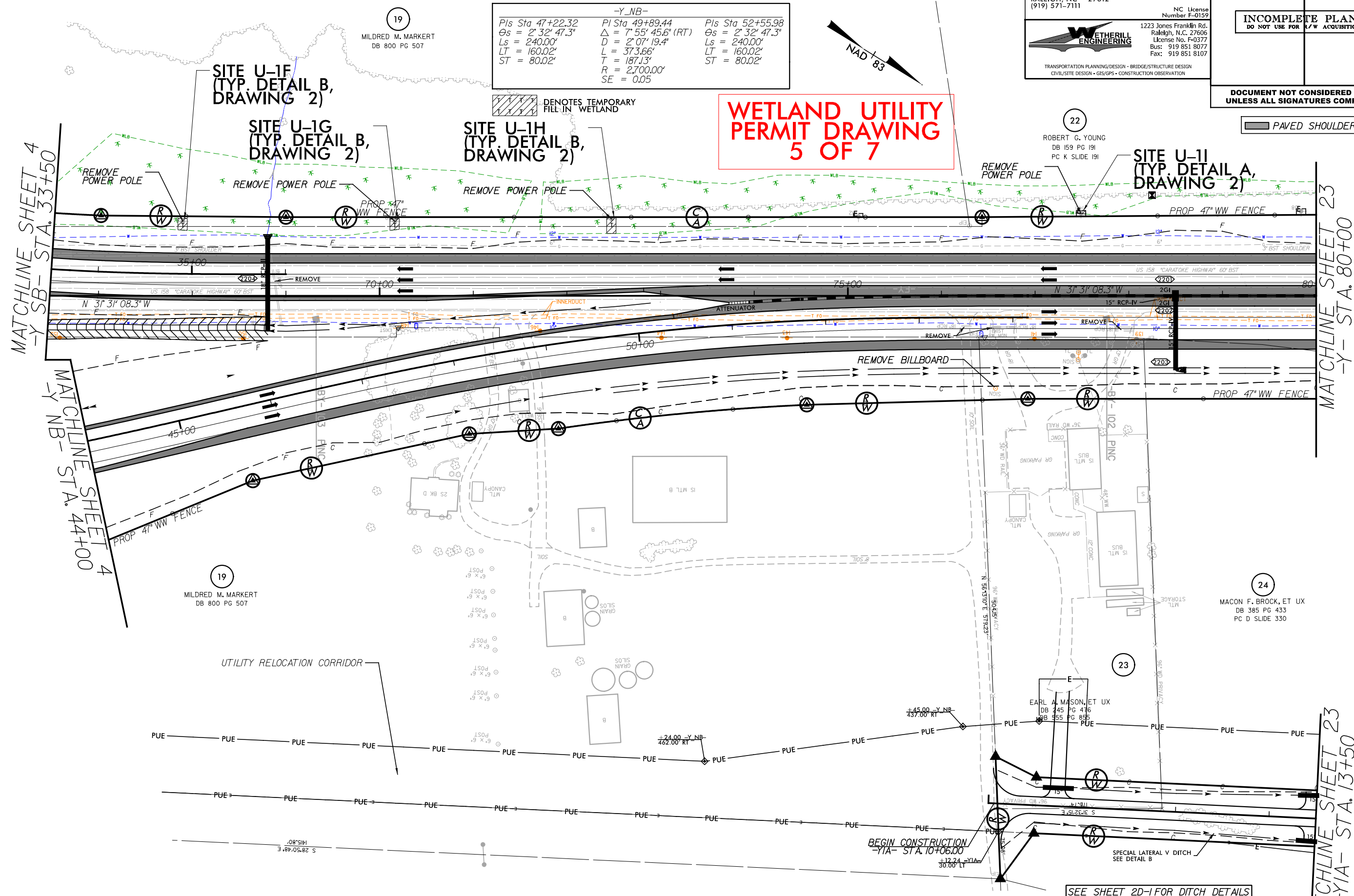
NC License Number F-0159  
 1223 Jones Franklin Rd.  
 Raleigh, N.C. 27606  
 License No. F-0377  
 Bus: 919 851 8077  
 Fax: 919 851 8107

**WETHERILL ENGINEERING**  
 TRANSPORTATION PLANNING/DESIGN - BRIDGE/STRUCTURE DESIGN  
 CIVIL/SITE DESIGN - GIS/GPS - CONSTRUCTION OBSERVATION

PROJECT REFERENCE NO. R-2576	SHEET NO. 22
ROADWAY DESIGN ENGINEER	PAVEMENT DESIGN ENGINEER
<b>INCOMPLETE PLANS</b> DO NOT USE FOR R/W ACQUISITION	
<b>DOCUMENT NOT CONSIDERED FINAL</b> UNLESS ALL SIGNATURES COMPLETED	

-Y_NB-		
Pls Sta 47+22.32	Pls Sta 49+89.44	Pls Sta 52+55.98
$\theta_s = 2^\circ 32' 47.3"$	$\Delta = 7^\circ 55' 45.6" (RT)$	$\theta_s = 2^\circ 32' 47.3"$
$L_s = 240.00'$	$D = 2^\circ 07' 19.4"$	$L_s = 240.00'$
$LT = 160.02'$	$L = 373.66'$	$LT = 160.02'$
$ST = 80.02'$	$T = 187.13'$	$ST = 80.02'$
	$R = 2,700.00'$	
	$SE = 0.05$	

WETLAND UTILITY PERMIT DRAWING 5 OF 7



MATCHLINE SHEET 4  
-Y\_SB- STA. 33+50

MATCHLINE SHEET 4  
-Y\_NB- STA. 44+00

MATCHLINE SHEET 23  
-Y- STA. 80+00

MATCHLINE SHEET 23  
-Y1A- STA. 13+50

19 MILDRED M. MARKERT  
DB 800 PG 507

22 ROBERT G. YOUNG  
DB 159 PG 191  
PC K SLIDE 191

23 SITE U-1I  
(TYP. DETAIL A,  
DRAWING 2)

24 MACON F. BROCK, ET UX  
DB 385 PG 433  
PC D SLIDE 330

EARL A. MASON, ET UX  
DB 445 PG 416  
DB 555 PG 383

BEGIN CONSTRUCTION  
-Y1A- STA. 10+06.00

SPECIAL LATERAL V DITCH  
SEE DETAIL B

SEE SHEET 37-38 FOR -Y- PROFILE  
SEE SHEET 40-41 FOR -Y\_NB- PROFILE  
SEE SHEET 39 FOR -Y\_SB- PROFILE  
SEE SHEET 44 FOR -Y1A- PROFILE

2/5/2024  
R2576\_Pdu\_psh22\_UtilityImpacts.dgn



6/2/99

# LOCHNER

H. W. LOCHNER, INC.  
2840 PLAZA PLACE, SUITE 202  
RALEIGH, NC 27612  
(919) 571-7111

NC License  
Number F-0159

1223 Jones Franklin Rd.  
Raleigh, N.C. 27606  
License No. F-0377  
Bus: 919 851 8077  
Fax: 919 851 8107

TRANSPORTATION PLANNING/DESIGN - BRIDGE/STRUCTURE DESIGN  
CIVIL/SITE DESIGN - GIS/GPS - CONSTRUCTION OBSERVATION

COINJOCK DEVELOPMENT COMPANY, INC  
DB 103 PG 363  
PC A SLIDE 217

-Y- TS Sta. 90+40.53  
-Y- POT Sta. 90+63.30  
-YI- POT Sta. 10+00.00  
 $\Delta = 90^\circ 00' 00.00''$

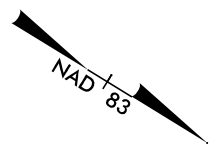
PROJECT REFERENCE NO. **R-2576** SHEET NO. **23**

ROADWAY DESIGN ENGINEER PAVEMENT DESIGN ENGINEER

**INCOMPLETE PLANS**  
DO NOT USE FOR R/W ACQUISITION

**DOCUMENT NOT CONSIDERED FINAL**  
UNLESS ALL SIGNATURES COMPLETED

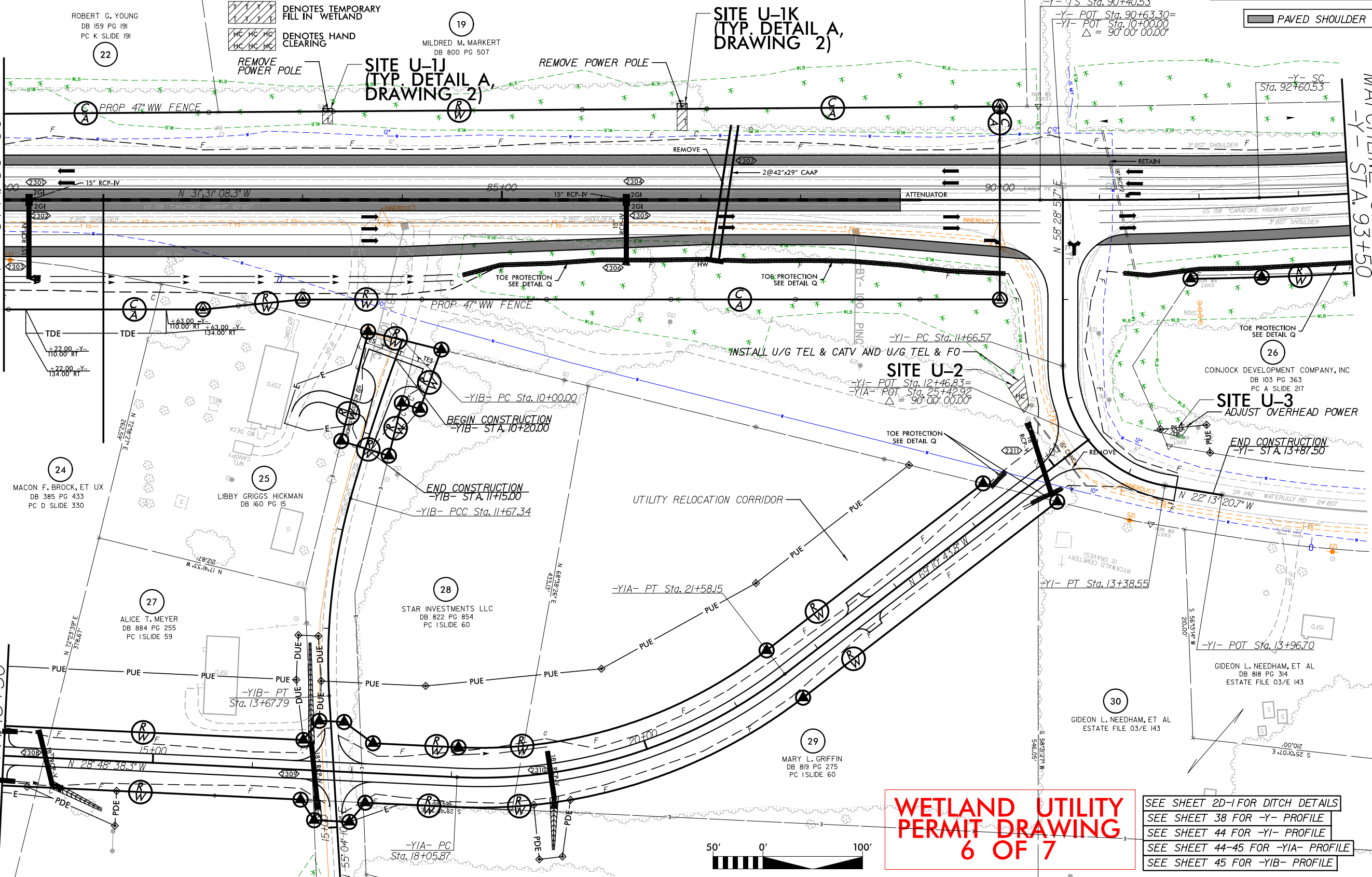
-YI-	-YIA-	-YIB-	-Y-
PI Sta 12+70.31 $\Delta = 80^\circ 42' 12.5''$ (LT) D = 46' 55" 31.0" L = 171.98' T = 103.74' R = 122.10' SE = 0.06 Ro = 124'	PI Sta 19+89.68 $\Delta = 40^\circ 22' 05.5''$ (LT) D = 11' 27" 33.0" L = 352.28' T = 183.81' R = 500.00' SE = 0.05 Ro = 100'	PI Sta 10+83.72 $\Delta = 4^\circ 47' 38.4''$ (LT) D = 2' 51" 53.2" L = 167.34' T = 83.72' R = 2,000.00'	PI Sta 12+68.51 $\Delta = 19^\circ 08' 28.0''$ (LT) D = 9' 32" 57.5" L = 200.45' T = 101.17' R = 600.00'



MATCHLINE SHEET 22  
-Y- STA. 80+00

MATCHLINE SHEET 24  
-Y- STA. 93+50

MATCHLINE SHEET 22  
-YIA- STA. 13+50



ROBERT G. YOUNG  
DB 159 PG 191  
PC K SLIDE 191

DENOTES TEMPORARY FILL IN WETLAND  
 DENOTES HAND CLEARING

19  
MILDRED M. MARKERT  
DB 800 PG 507

**SITE U-1K**  
(TYP. DETAIL A,  
DRAWING 2)

**SITE U-1J**  
(TYP. DETAIL A,  
DRAWING 2)

**SITE U-2**

**SITE U-3**  
ADJUST OVERHEAD POWER

24  
MACON F. BROCK, ET UX  
DB 385 PG 433  
PC D SLIDE 330

25  
LIBBY GRIGGS HICKMAN  
DB 160 PG 15

28  
STAR INVESTMENTS LLC  
DB 822 PG 854  
PC ISLIDE 60

27  
ALICE T. MEYER  
DB 884 PG 255  
PC ISLIDE 59

29  
MARY L. GRIFFIN  
DB 819 PG 275  
PC ISLIDE 60

30  
GIDEON L. NEEDHAM, ET AL  
ESTATE FILE 03/E 143

GIDEON L. NEEDHAM, ET AL  
DB 818 PG 314  
ESTATE FILE 03/E 143

**WETLAND UTILITY PERMIT DRAWING**  
**6 OF 7**

- SEE SHEET 2D-1 FOR DITCH DETAILS
- SEE SHEET 38 FOR -Y- PROFILE
- SEE SHEET 44 FOR -YI- PROFILE
- SEE SHEET 44-45 FOR -YIA- PROFILE
- SEE SHEET 45 FOR -YIB- PROFILE



245/2024  
R2576\_P01\_psh23\_UtilityImpacts.dgn

**WETLAND AND SURFACE WATER IMPACTS SUMMARY**

Site No.	Station (From/To)	Structure Size / Type	WETLAND IMPACTS					SURFACE WATER IMPACTS					
			Permanent Fill In Wetlands (ac)	Temp. Fill In Wetlands (ac)	Excavation in Wetlands (ac)	Mechanized Clearing in Wetlands (ac)	Hand Clearing in Wetlands (ac)	Permanent SW impacts (ac)	Temp. SW impacts (ac)	Existing Channel Impacts Permanent (ft)	Existing Channel Impacts Temp. (ft)	Natural Stream Design (ft)	
U-1A	-Y- 34+72 to 34+82 LT			0.002									
U-1B	-Y- 34+72 to 34+82 LT			0.001									
U-1C	-Y- 35+22 to 35+32 LT			0.001									
U-1D	-Y- 40+13 to 40+23 LT			< 0.001									
U-1E	-Y- 66+37 to 66+47 LT			0.002									
U-1F	-Y- 67+85 to 67+95 LT			0.003									
U-1G	-Y- 70+11 to 70+21 LT			0.003									
U-1H	-Y- 72+43 to 72+53 LT			0.004									
U-1I	-Y- 77+44 to 77+54 LT			< 0.001									
U-1J	-Y- 83+20 to 83+30 LT			0.004									
U-1K	-Y- 86+76 to 86+86 LT			0.006									
U-1L	-Y- 20+49 to 20+81 LT			0.010									
U-1M	-Y- 39+30 to 39+49 LT			0.014									
U-1N	-Y- 42+32 to 42+47 LT			0.012									
2	-Y1- 11+75 to 12+01 RT							0.009					
3	-Y1- 13+03 to 13+53 RT							0.004					
<b>TOTALS*:</b>				0.062				0.013			0	0	0

\*Rounded totals are sum of actual impacts

- NOTES:  
 Site 1 includes the entire wetland along the Y line (US 158)  
 Site 1 assumes the use a 10' wide construction mat in wetlands to access power poles to be removed.  
 Site 1 assumes a 5' buffer for construction mats around billboards to be removed.

NC DEPARTMENT OF TRANSPORTATION  
 DIVISION OF HIGHWAYS  
 2/5/2024  
 Currituck County  
 R-2576  
 34470.1.TA1  
 SHEET            7            OF            7