



STATE OF NORTH CAROLINA  
DEPARTMENT OF TRANSPORTATION

ROY COOPER  
GOVERNOR

J. ERIC BOYETTE  
SECRETARY

June 1, 2021

N.C. Division of Coastal Management  
1638 Mail Service Center  
Raleigh, NC 27699-1638

ATTN: Ms. Cathy Brittingham, NCDOT Coordinator

Subject: **Revised DCM Consistency Certification** for the proposed US 70 Havelock Bypass in Craven County. TIP No. R-1015. WBS 34360.1.2.

Dear Ms. Brittingham:

The purpose of this letter and information package is to provide information on modifications to our plans for the Havelock Bypass, now under construction. Piedmont Natural Gas (PNG) is preparing to work on a natural gas transmission pipeline due to the project, and some of this work will require impacts to wetlands. These changes may require a revision to the Division of Coastal Management's CAMA Consistency Determination for the project. This package includes supplemental information in this letter, revised permit drawings and a revised Division of Mitigation Services acceptance letter.

Description and Purpose:

PNG has an existing 8" gas transmission pipeline located within the limits of the NCDOT right-of-way (ROW) along the US 70 highway corridor. Construction of the Havelock Bypass has created a number of drainage and grading conflicts with this pipeline. PNG proposes to replace the pipe in some locations and install new pipe in others, with work at both ends of the project near and along existing US 70. Station numbers for these locations are in the attached utility narrative.

Adjusting the pipeline near the planned Havelock Bypass north interchange connection to US 70 proved to be especially problematic, as they need to install about 4,560 LF of 8" steel pipe. In short, there is not adequate space inside the existing NCDOT ROW to install this amount of pipe given the density of other utilities already in the ROW. There would be constructability issues given the possible conflict with other utilities, and the impacts construction would have on US 70 traffic.

PNG decided to solve those conflicts by obtaining a private easement in which to relocate their gas line. The proposed alignment places the gas line right of way further off the US 70 corridor on the north end. This route was chosen as the density of existing residential and commercial properties along the US 70 service road provided no room where a 50-footwide private easement could be secured along the road frontage. The route does join back up with the service corridor on the south end of this off DOT ROW route and runs parallel with the road ROW for about 1,100 LF before it ties back into the existing gas line. It was routed across the rear of affected parcels and turned to route back towards the service road as

quickly as possible as the re-route progresses south to further reduce the impact to environmentally sensitive areas.

Jurisdictional Impacts:

Pipeline excavation will impact 0.67 acre of wetlands. Excavated material will be temporarily placed on to fabric, resulting in 1.0 acre of temporary fill in wetlands. There will be 0.27 acre of hand clearing needed in wetlands, but no impacts to streams or buffers. A set of permit drawings is attached that depicts these impacts.

Compensatory mitigation for the proposed additional 0.67 acre of wetland impacts has been obtained from the N.C. Division of Mitigation Services. See attached updated mitigation acceptance letter.

Federally protected species:

PNG conducted a review of federally protected species in the project vicinity. Their analysis resulted in biological conclusions of “No Effect” for all identified species except the northern long-eared bat (NLEB). More information on this analysis is available on request.

The US Fish and Wildlife Service has revised the previous programmatic biological opinion (PBO) in conjunction with the Federal Highway Administration (FHWA), the US Army Corps of Engineers (USACE), and NCDOT for the NLEB (*Myotis septentrionalis*) in eastern North Carolina. The PBO covers the entire NCDOT program in Divisions 1-8, including all NCDOT projects and activities. Although this programmatic covers Divisions 1-8, NLEBs are currently only known in 19 counties, but may potentially occur in 11 additional counties within Divisions 1-8. NCDOT, FHWA, and USACE have agreed to two conservation measures which will avoid/minimize mortality of NLEBs. These conservation measures only apply to the 30 current known/potential counties shown on Figure 2 of the PBO at this time. The programmatic determination for NLEB for the NCDOT program is May Affect, Likely to Adversely Affect. The PBO will ensure compliance with Section 7 of the Endangered Species Act for ten years (effective through December 31, 2030) for all NCDOT projects with a federal nexus in Divisions 1-8, which includes Craven County, where R-1015 is located.

Cultural Resources:

PNG coordinated with the State Historic Preservation Office regarding this proposed work. SHPO responded by letter dated January 15, 2021 and stated that after a review of the project, they were not aware of any historic resources which would be affected by the project, and therefore, had no comment on the project as proposed.

Considering these changes, NCDOT believes the project still complies with the enforceable policies of North Carolina’s approved management program and will be conducted in a manner consistent with the Coastal Area Management Act. A copy of this request and its distribution list will be posted on the NCDOT website at: <https://xfer.services.ncdot.gov/pdea/PermApps/>

If you have any questions or need additional information, please contact Gordon Cashin at (919) 749-0442 or [gcashin@ncdot.gov](mailto:gcashin@ncdot.gov).

Sincerely,

DocuSigned by:

*Mack C. Rivenbark III*

AAAD1248B309416...

for Philip S. Harris III, P.E., C.P.M., Unit Head  
Environment Analysis Unit

cc: Mr. Stephen Lane, NCDCM  
NCDOT Permit Application Standard Distribution List

*Mailing Address:*  
NC DEPARTMENT OF TRANSPORTATION  
ENVIRONMENTAL ANALYSIS UNIT  
1598 MAIL SERVICE CENTER  
RALEIGH, NC 27699-1598

*Telephone:* (919) 707-6000  
*Fax:* (919) 250-4224  
*Customer Service:* 1-877-368-4968

*Website:* [www.ncdot.gov](http://www.ncdot.gov)

*Location:*  
1000 BIRCH RIDGE DRIVE  
RALEIGH, NC 27610

ROY COOPER  
 Governor  
 DIONNE DELLI-GATTI  
 Secretary  
 TIM BAUMGARTNER  
 Director



NORTH CAROLINA  
 Environmental Quality

May 25, 2021

Mr. Philip S. Harris, P.E., CPM  
 Environmental Analysis Unit  
 North Carolina Department of Transportation  
 1598 Mail Service Center  
 Raleigh, North Carolina 27699-1598

Dear Mr. Harris:

Subject: DMS Mitigation Acceptance Letter:

**R-1015**, US 70 – Havelock Bypass from North of Pine Grove to North of the Carteret County Line, Craven County

References: USACE 404 Individual Permit issued April 18, 2019 and permit modification issued May 11, 2020 (USACE Action ID 1993-02466)

NCDWR 401 Water Quality Certification issued April 3, 2019, correction letter dated November 25, 2019 and permit modification issued on May 1, 2020 (NCDWR ID 2018-1598)

The purpose of this letter is to notify you that the Division of Mitigation Services (DMS) will provide the additional compensatory wetland mitigation for the subject project. Based on the information supplied by you on May 21, 2021, the impacts are located in CU 03020204 of the Neuse River basin in the Southern Outer Coastal Plain (SOCP) Eco-Region, and are as follows:

**Table 1 – Additional Impacts (feet / acres)**

Neuse 03020204 SOCP	Stream			Wetlands			Buffer (Sq. Ft.)	
	Cold	Cool	Warm	Riparian	Non-Riparian	Coastal Marsh	Zone 1	Zone 2
Impacts (feet/acres)	0	0	0	0	0.670	0	0	0

\*NOTE: Some of the stream impacts may be proposed to be mitigated at a 1:1 mitigation ratio. See permit application for details.

This additional impact and associated mitigation needs were not projected by the NCDOT in the 2021 impact data. DMS is currently providing stream, wetland, and buffer mitigation for the impacts associated with this project located in cataloging unit 03020204 of the Neuse River basin as required by the 404 and 401 permits issued in April 2019 and May 2020, as shown in the below table (in mitigation credits)



North Carolina Department of Environmental Quality | Division of Mitigation Services  
 217 West Jones Street | 1652 Mail Service Center | Raleigh, North Carolina 27699-1652  
 919.707.8976



**Table 2 – Current Permitted Impacts and Associated Mitigation Requirements provided by DMS (based on issued permits) and Revised Anticipated Impacts (based on mitigation request)**


Impact Type	Total Permitted Impacts (feet / acre / sq ft)	Mitigation Provided by DMS per Issued Permits (Credits)	Additional Impact (for approval)	Revised Total Impacts*
Stream (warm)	2,870.000	5,740.000	0.000	2,870.000
Riparian Wetland	15.820	31.640	0.000	15.820
Non-Riparian Wetland	97.780	195.560	0.670	98.450
Riparian Buffer	89,824.000	210,473.000	0.000	89,824.000

\*Some of the additional stream impacts may be proposed to be mitigated at a 1:1 mitigation ratio. See permit application for details. DMS will provide the amount of mitigation as determined by the regulatory agencies.

DMS commits to implementing additional sufficient compensatory wetland mitigation credits to offset the impacts associated with this project as determined by the regulatory agencies using the delivery timeline listed in Section F.3.c.iii of the In-Lieu Fee Instrument dated July 28, 2010. If the above referenced impact amounts are revised, then this mitigation acceptance letter will no longer be valid and a new mitigation acceptance letter will be required from DMS.

If you have any questions or need additional information, please contact Ms. Beth Harmon at 919-707-8420.

Sincerely,



James B. Stanfill  
 Asset Management Supervisor

cc: Mr. Monte Matthews, USACE – Raleigh Regulatory Field Office  
 Ms. Amy Chapman, Division of Water Resources, Wetlands/401 Unit  
 File: R-1015 Mod 2



## **R-1015 Craven/Carteret Counties EAU Narrative**

May 10, 2021

By: Corey Bousquet (Hinde Engineering)

### **Gas (Piedmont Natural Gas)**

#### Existing Gas Lines:

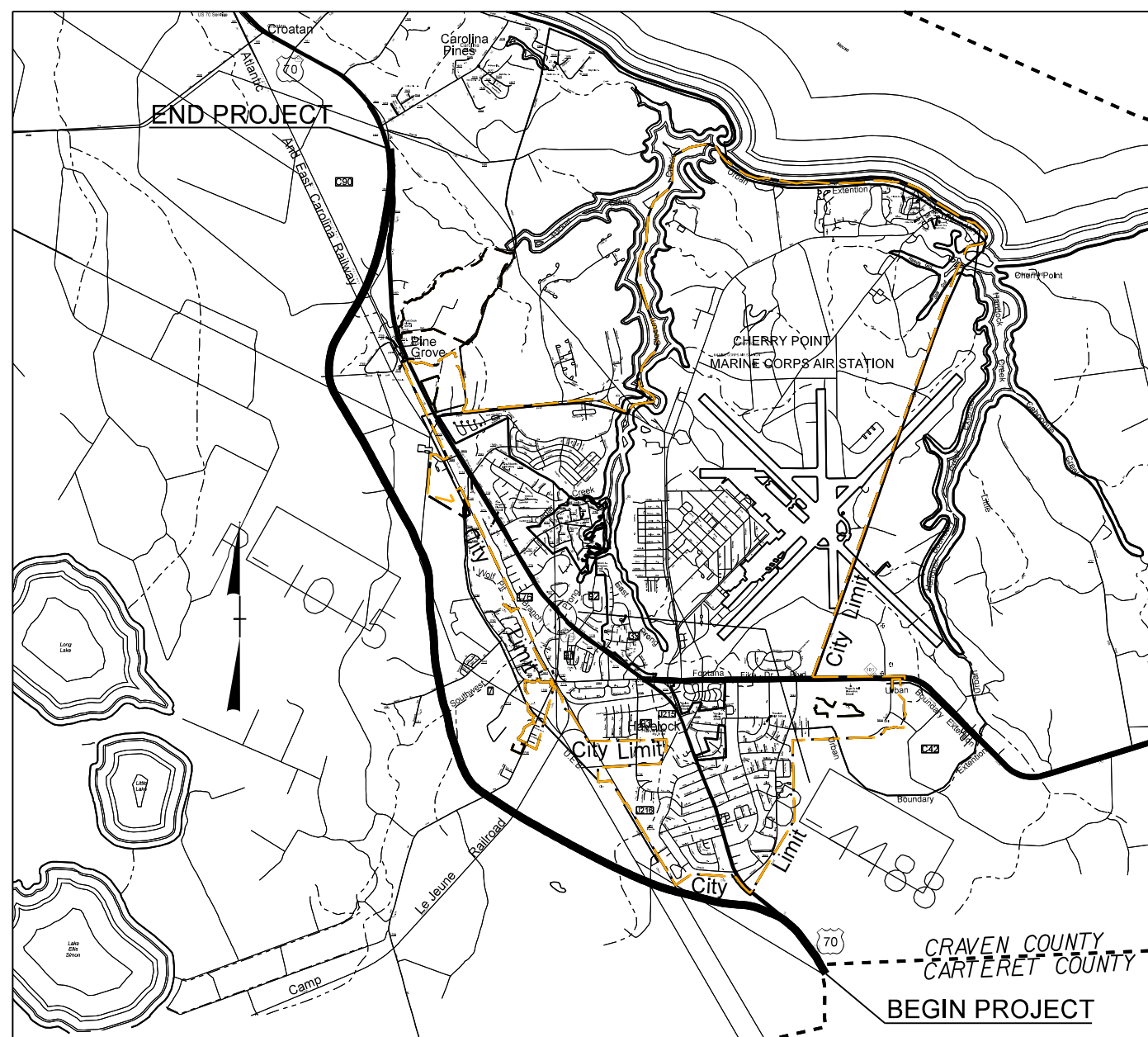
- PNG are replacing the existing 8" gas lines right of Line -L- at the following stations:  
(Sta. 36+54 to Sta. 108+71), (Sta. 516+15 to Sta. 549+96),  
(Sta. 563+11 to Sta. 568+33) and (Sta. 577+59 to Sta. 578+23)

#### Proposed Gas Lines:

- PNG are installing new 8" steel gas lines right of Line -L- at the following stations:  
(Sta. 36+54 to Sta. 108+71), (Sta. 516+15 to Sta. 549+96), (Sta. 563+11 to Sta. 568+33)  
and (Sta. 577+59 to Sta. 578+23).



**TIP PROJECT: R-1015**



VICINITY MAP

STATE OF NORTH CAROLINA  
DIVISION OF HIGHWAYS

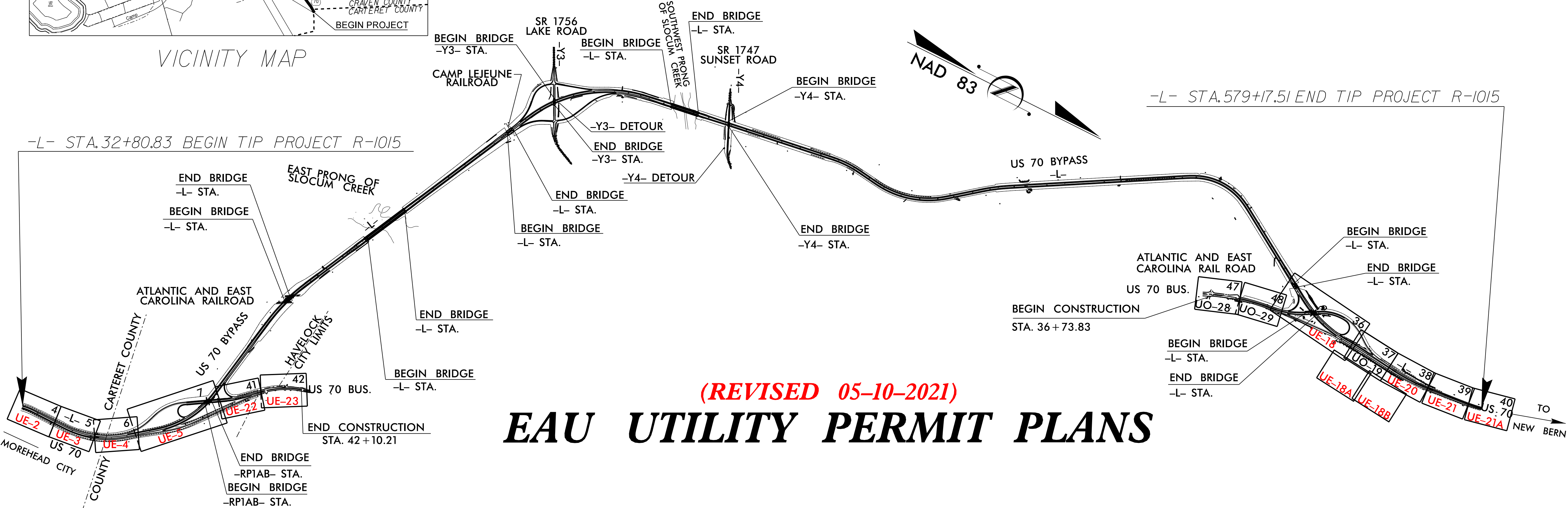
**UTILITIES BY OTHERS PLANS  
CRAVEN/CARTERET COUNTY**

**LOCATION: US 70 (HAVELOCK BYPASS) FROM SOUTH OF CARTERET/CRAVEN COUNTY LINE TO SOUTH OF SR 1176 (CAROLINE PINES BLVD.)**

**TYPE OF WORK: RELOCATION OF GAS, POWER AND COMMUNICATION LINES**

T.I.P. NO.	SHEET NO.
R-1015	UE-1

NOTE:  
ALL UTILITY WORK SHOWN ON THIS SHEET IS DONE BY OTHERS.  
NO PAYMENT WILL BE MADE TO THE CONTRACTOR FOR UTILITY WORK SHOWN ON THIS SHEET.

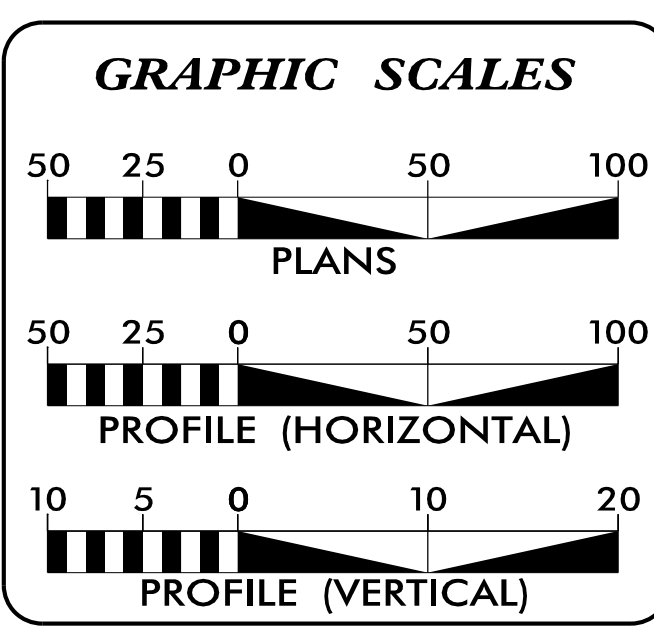


(REVISED 05-10-2021)

**EAU UTILITY PERMIT PLANS**

THIS IS A CONTROLLED-ACCESS PROJECT WITH ACCESS BEING LIMITED TO INTERCHANGES  
A PORTION OF THIS PROJECT IS WITHIN THE MUNICIPAL BOUNDARIES OF HAVELOCK.  
CLEARING ON THIS PROJECT SHALL BE PERFORMED TO THE LIMITS ESTABLISHED BY METHOD -----.

TIE ALL PUE LINES TO A NCDOT R/W (EXISTING OR PROPOSED)



**INDEX OF SHEETS**

SHEET NO.	DESCRIPTION
EU-1	TITLE SHEET
EU-2 THRU EU-5	EAU PLAN SHEETS
EU-18 THRU EU-18B	EAU PLAN SHEETS
EU-20 THRU EU-23	EAU PLAN SHEETS

**UTILITY OWNERS WITH CONFLICTS**

(A)	POWER - DUKE ENERGY (TRANS)
(B)	POWER - CITY OF NEW BERN
(C)	POWER - CARTERET-CRAVEN
(D)	POWER - DUKE ENERGY (DISTR)
(E)	TELECOM - CENTURYLINK
(F)	TELECOM - CHARTER/SPECTRUM COM
(G)	TELECOM - SPIRIT COM
(H)	TELECOM - MCNC
(I)	TELECOM - CITY OF NEW BERN
(J)	GAS - PIEDMONT NATURAL GAS

PREPARED IN THE OFFICE OF:

License No. C-2639  
401 Harrison Oaks Blvd., Suite 145 Cary, NC 27513  
(919)-853-0001

Michael E. Davis	UTILITY COORDINATION PROJECT MANAGER
Bill F. Black	PROJECT UTILITY COORDINATOR
James N. Arnold	PROJECT UTILITY DESIGNER

**DIVISION OF HIGHWAYS  
UTILITIES UNIT**  
1555 MAIL SERVICES CENTER  
RALEIGH, NC 27699-1555  
PHONE (919) 707-6690  
FAX (919) 250-4151

Bo Hemphill, P.E.	UTILITIES REGIONAL ENGINEER
Kijah Kamil	UTILITIES ENGINEER
Ed Reams Jr.	UTILITIES AREA COORDINATOR
Larry James Jr.	UTILITIES COORDINATOR

I:\MAY-2021\07-48 S:\Server\_Files\PROJECTS\2015\2015501.00 NCDOT R-1015\Design\Utilities\Engineering\NEU\Permit Plans and Narrative\Plans\R-1015\_ut\_1sh\_EU1\_PNG\_psh.dgn \$\$\$USERNAME\$\$\$



### UTILITIES BY OTHERS

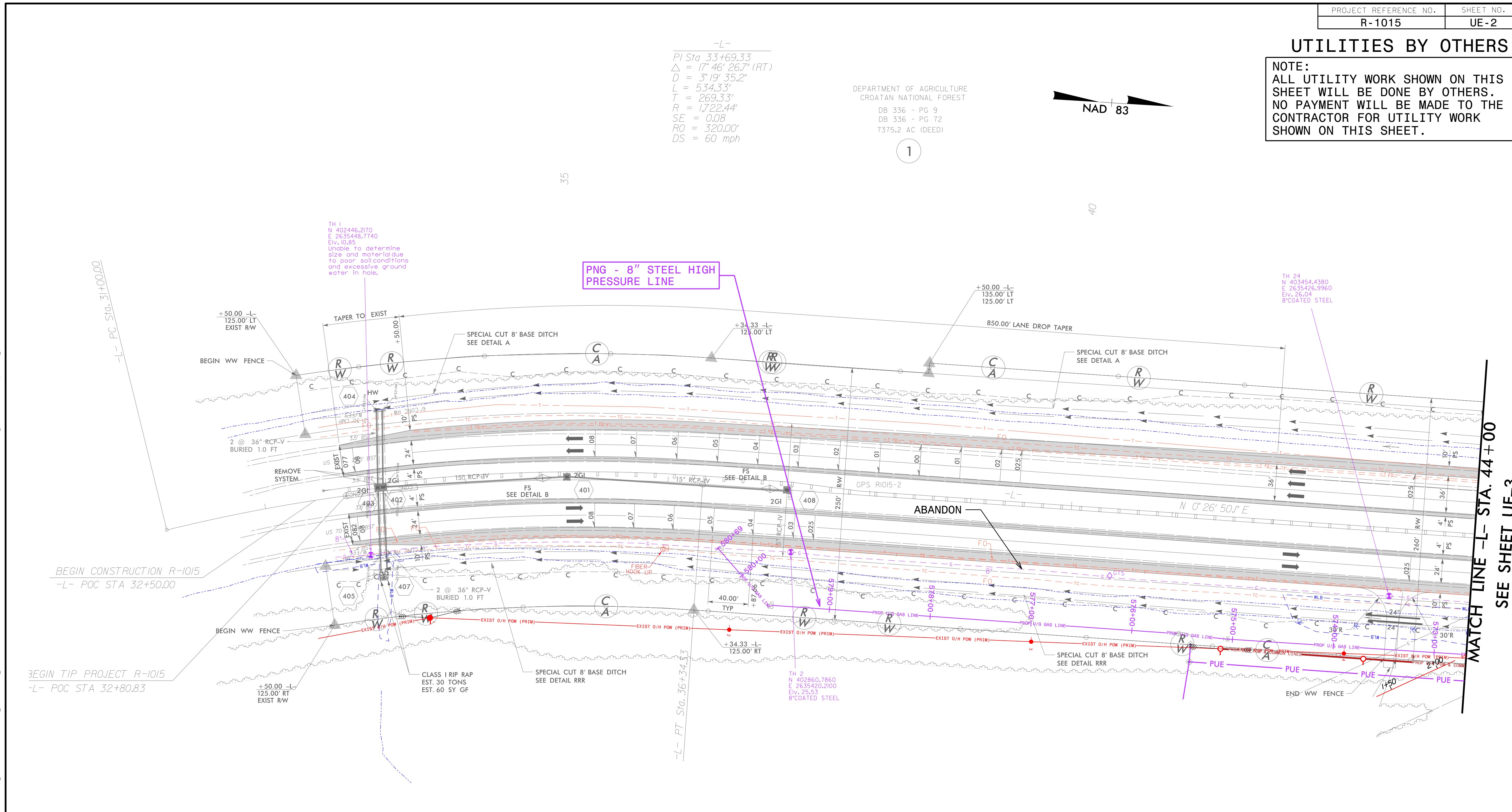
NOTE:  
 ALL UTILITY WORK SHOWN ON THIS SHEET WILL BE DONE BY OTHERS. NO PAYMENT WILL BE MADE TO THE CONTRACTOR FOR UTILITY WORK SHOWN ON THIS SHEET.

-L-  
 PI Sta 33+69.33  
 $\Delta = 17^{\circ} 46' 26.7" (RT)$   
 $D = 3' 19' 35.2"$   
 $L = 534.33'$   
 $T = 269.33'$   
 $R = 1,722.44'$   
 $SE = 0.08$   
 $RO = 320.00'$   
 $DS = 60 \text{ mph}$

DEPARTMENT OF AGRICULTURE  
 CROATAN NATIONAL FOREST  
 DB 336 - PG 9  
 DB 336 - PG 72  
 7375.2 AC (DEED)



1

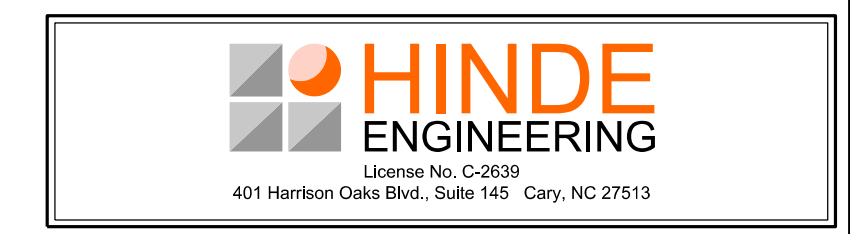


**NO WETLAND IMPACTS FOR THE 8" GAS LINE**

DEPARTMENT OF AGRICULTURE  
 CROATAN NATIONAL FOREST  
 DB 336 - PG 9  
 DB 336 - PG 72  
 7375.2 AC (DEED)

1

SEE RDWY STD DWGS 865.01  
 FOR CABLE GUIDERAIL INSTALLATION



I:\MAY\_2021\0748\_PROJECTS\2015\A2015501\00\_NCDOT\_R-1015\Design\Utilities\Engineering\NEU\Permit\_Plans\_and\_Narrative\Plans\1015.ut\_rdy4\_EU2\_PNG\_psh.dgn  
 3:58:51 PM 5/28/2021

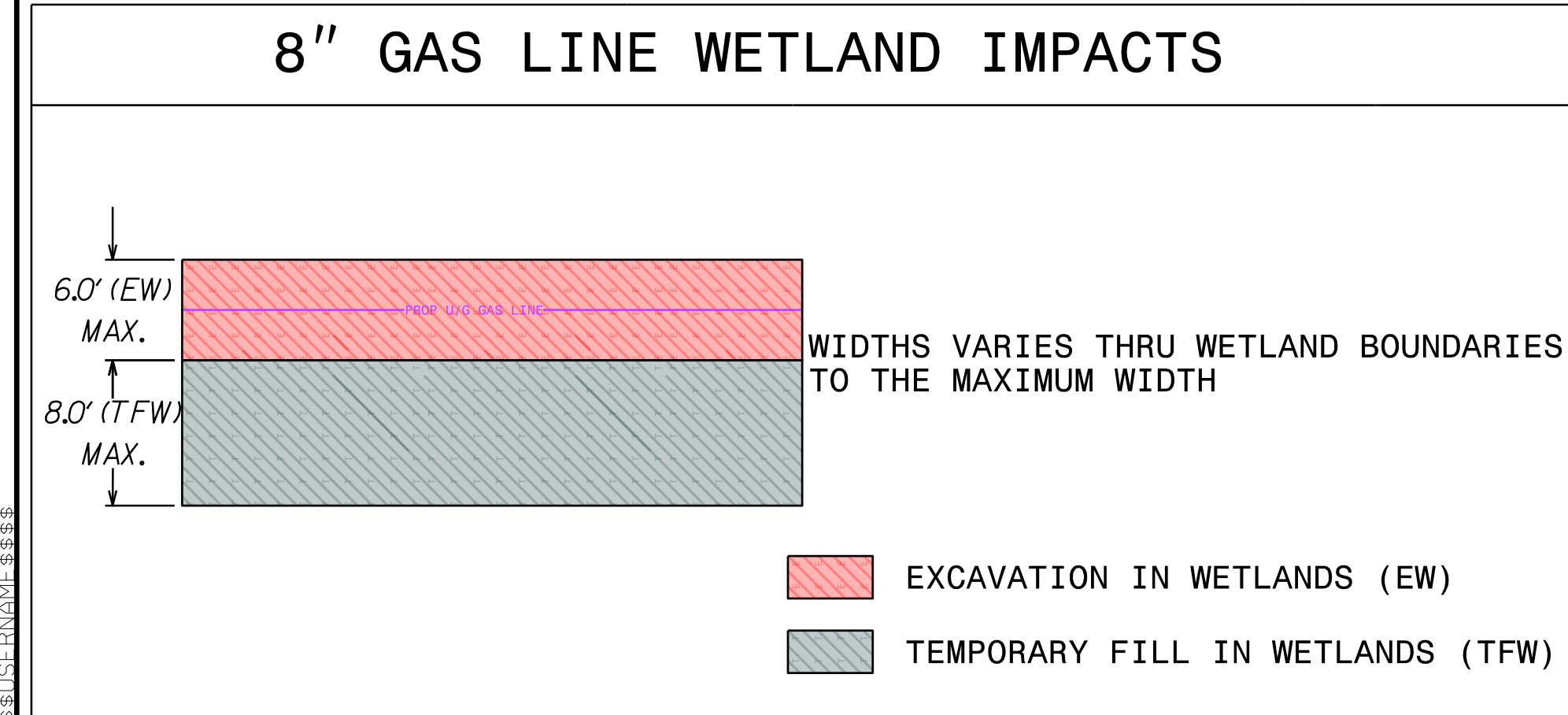
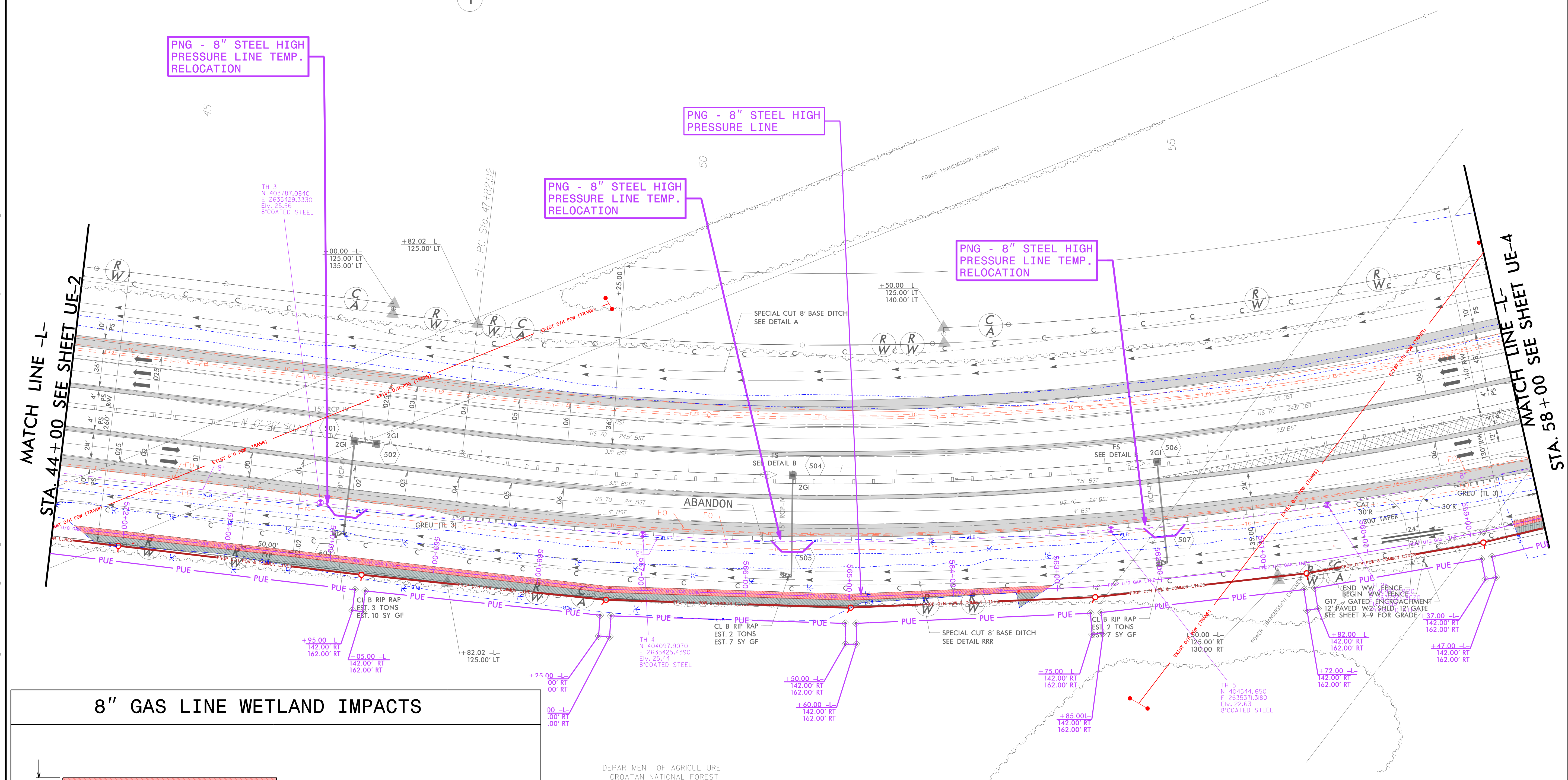


### UTILITIES BY OTHERS

NOTE:  
 ALL UTILITY WORK SHOWN ON THIS SHEET WILL BE DONE BY OTHERS. NO PAYMENT WILL BE MADE TO THE CONTRACTOR FOR UTILITY WORK SHOWN ON THIS SHEET.

DEPARTMENT OF AGRICULTURE  
 CROATAN NATIONAL FOREST  
 DB 336 - PG 9  
 DB 336 - PG 72  
 7375.2 AC (DEED)

-L-  
 PI Sta 58+21.81  
 $\Delta = 38^{\circ} 01' 15.2" (LT)$   
 $D = 1^{\circ} 53' 54.5"$   
 $L = 2,002.71'$   
 $T = 1,039.80'$   
 $R = 3,018.00'$   
 $SE = 0.06$   
 $RO = 300.00'$   
 $DS = 65 \text{ mph}$



DEPARTMENT OF AGRICULTURE  
 CROATAN NATIONAL FOREST  
 DB 336 - PG 9  
 DB 336 - PG 72  
 7375.2 AC (DEED)

# SITE 1

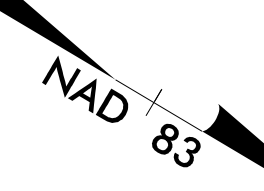
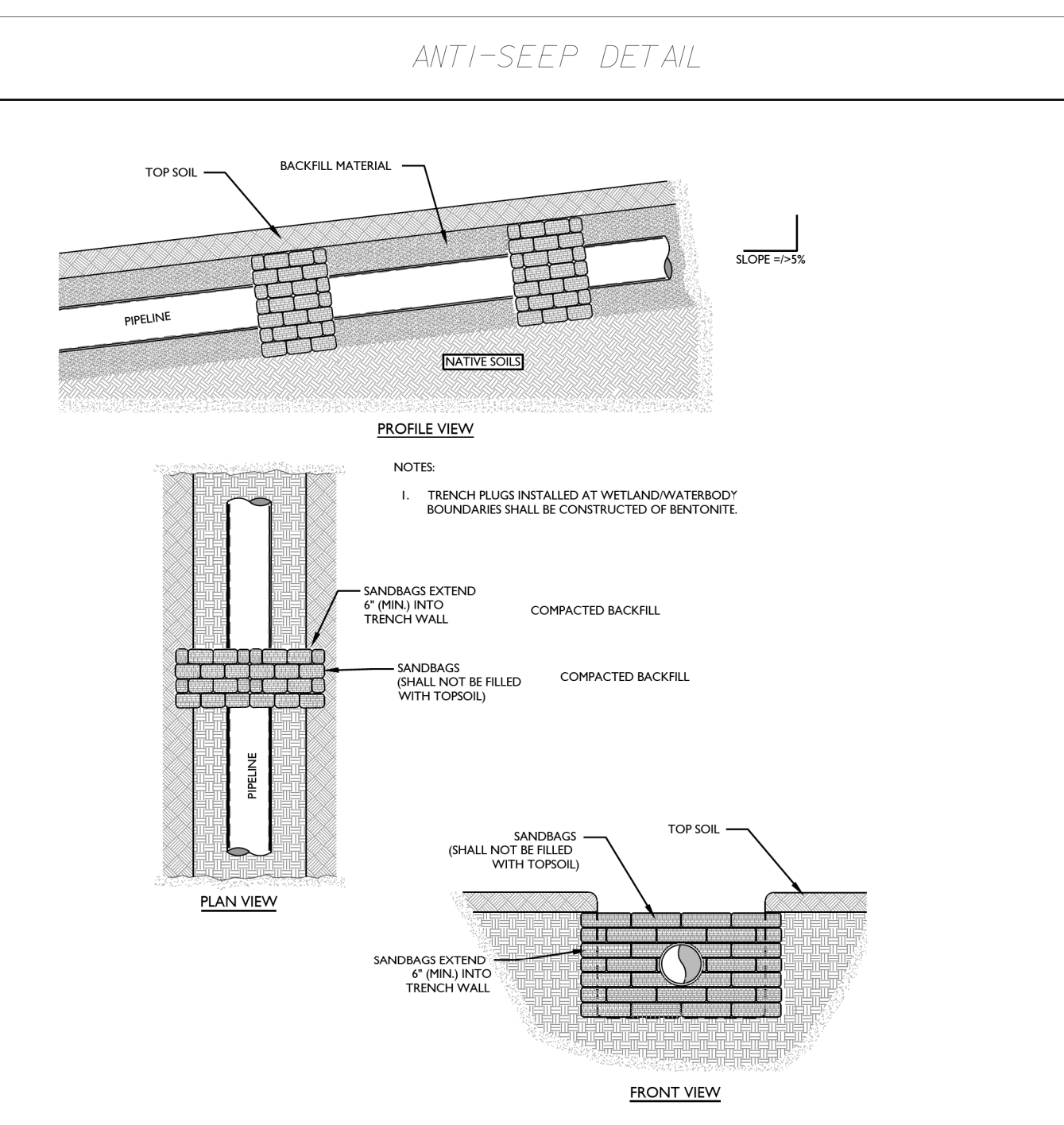


I:\MAY-2021\0748 PROJECTS\2015\A2015501.000 NCDOT R-1015\Design\Utilities\Engineering\NEU\Permit Plans and Narrative\Plans\A-1015.ut\_rdy5\_EU3\_PNG\_psh.dgn  
 3:38:51 PM 5/28/2021

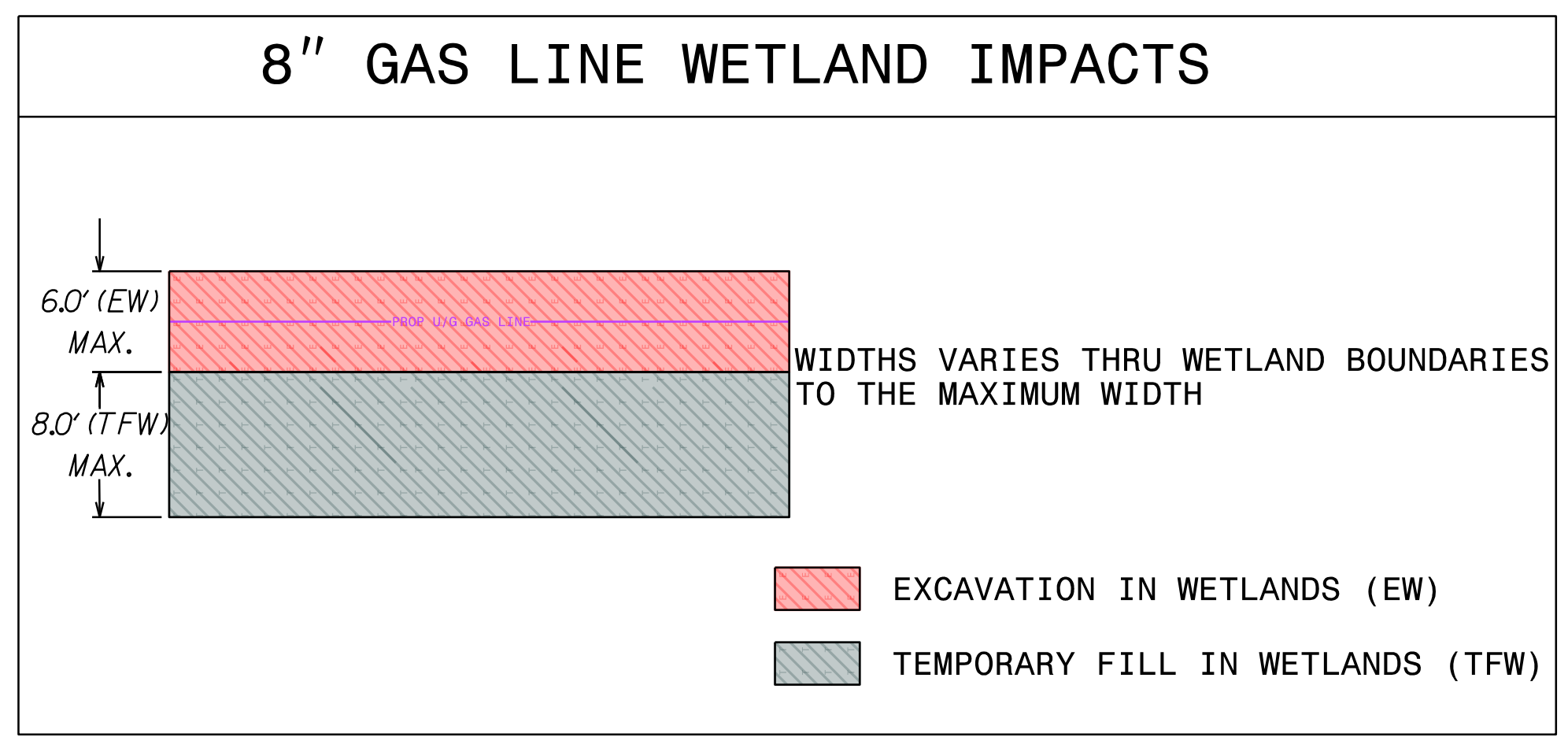
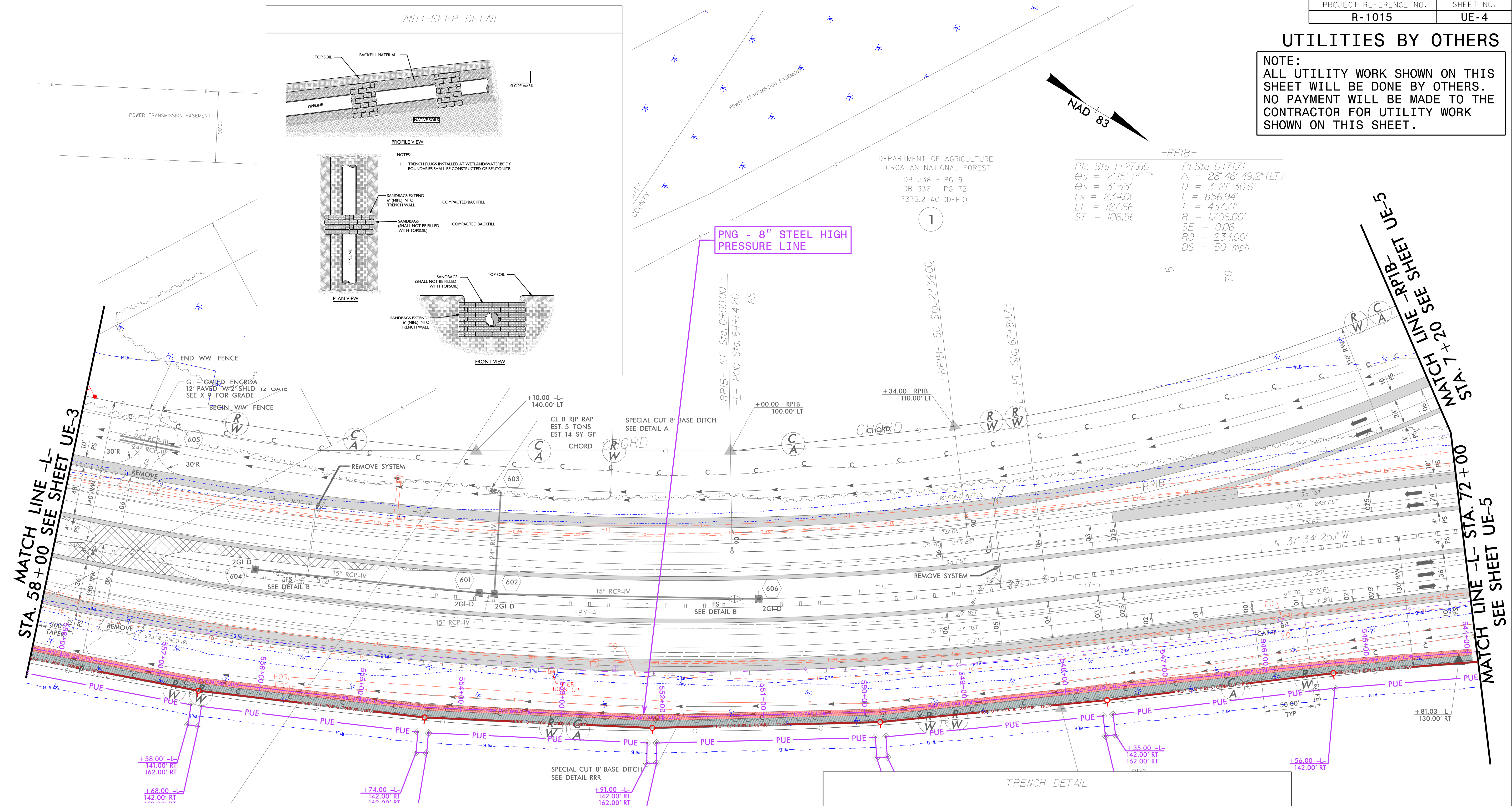


UTILITIES BY OTHERS

NOTE: ALL UTILITY WORK SHOWN ON THIS SHEET WILL BE DONE BY OTHERS. NO PAYMENT WILL BE MADE TO THE CONTRACTOR FOR UTILITY WORK SHOWN ON THIS SHEET.



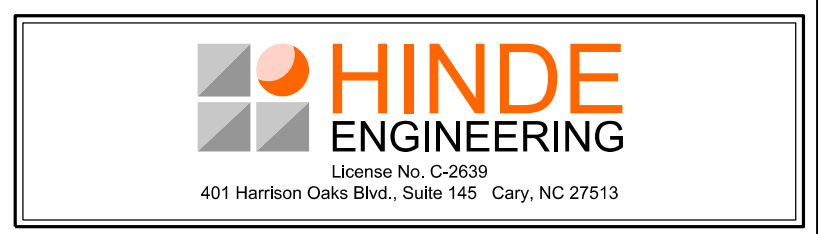
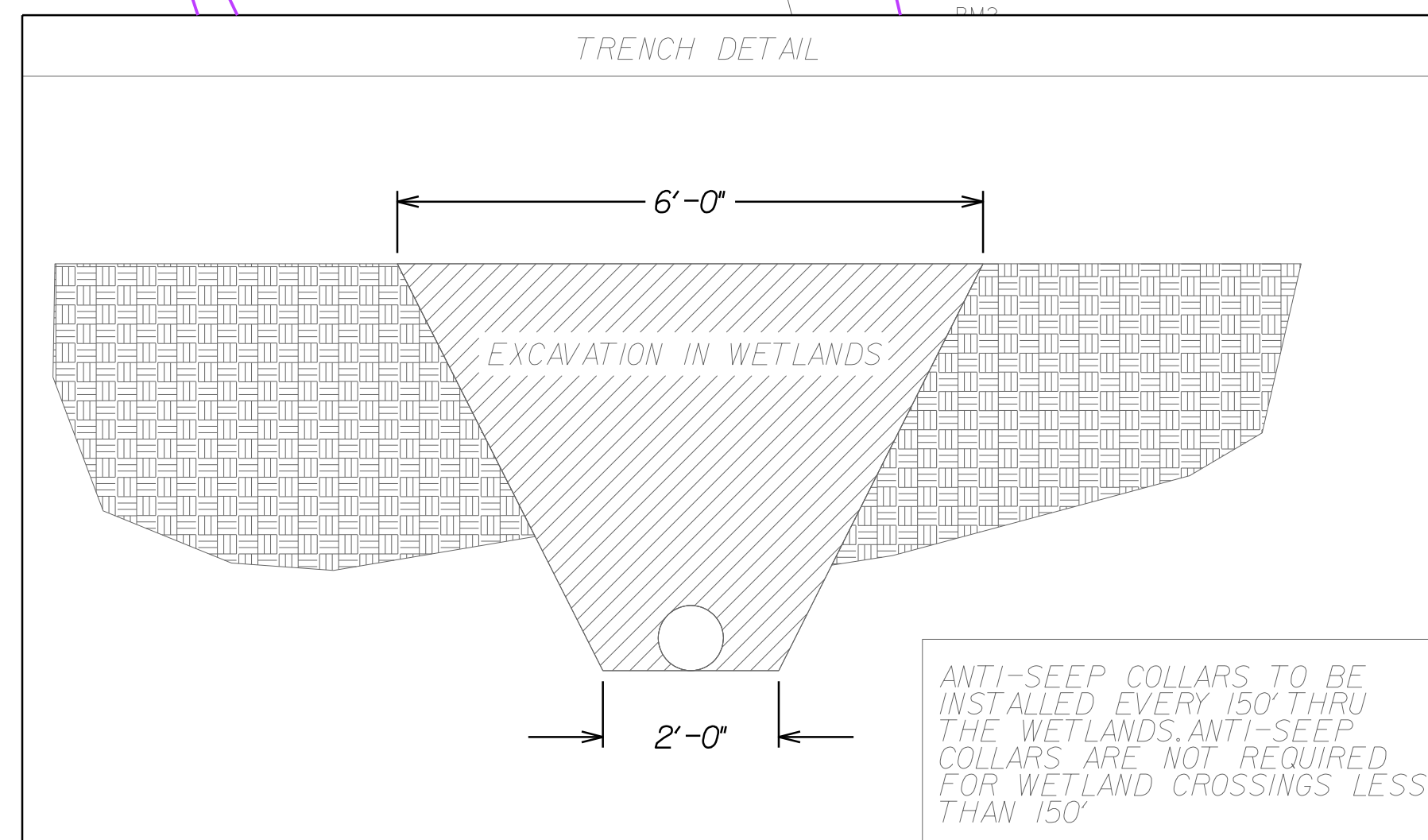
-RP1B-  
Pls Sta 1+27.66  
 $\theta_s = 2^{\circ}15'20.7''$   
 $\Delta_s = 3^{\circ}55'$   
Ls = 234.00  
LT = 127.66  
ST = 106.54  
PI Sta 6+71.71  
 $\Delta = 28^{\circ}46'49.2''$  (LT)  
D = 3^{\circ}21'30.6''  
L = 856.94'  
T = 437.71'  
R = 1,706.00'  
SE = 0.06  
RO = 234.00'  
DS = 50 mph



# SITE 2

DEPARTMENT OF AGRICULTURE  
CROATAN NATIONAL FOREST  
DB 336 - PG 9  
DB 336 - PG 72  
7375.2 AC (DEED)

1

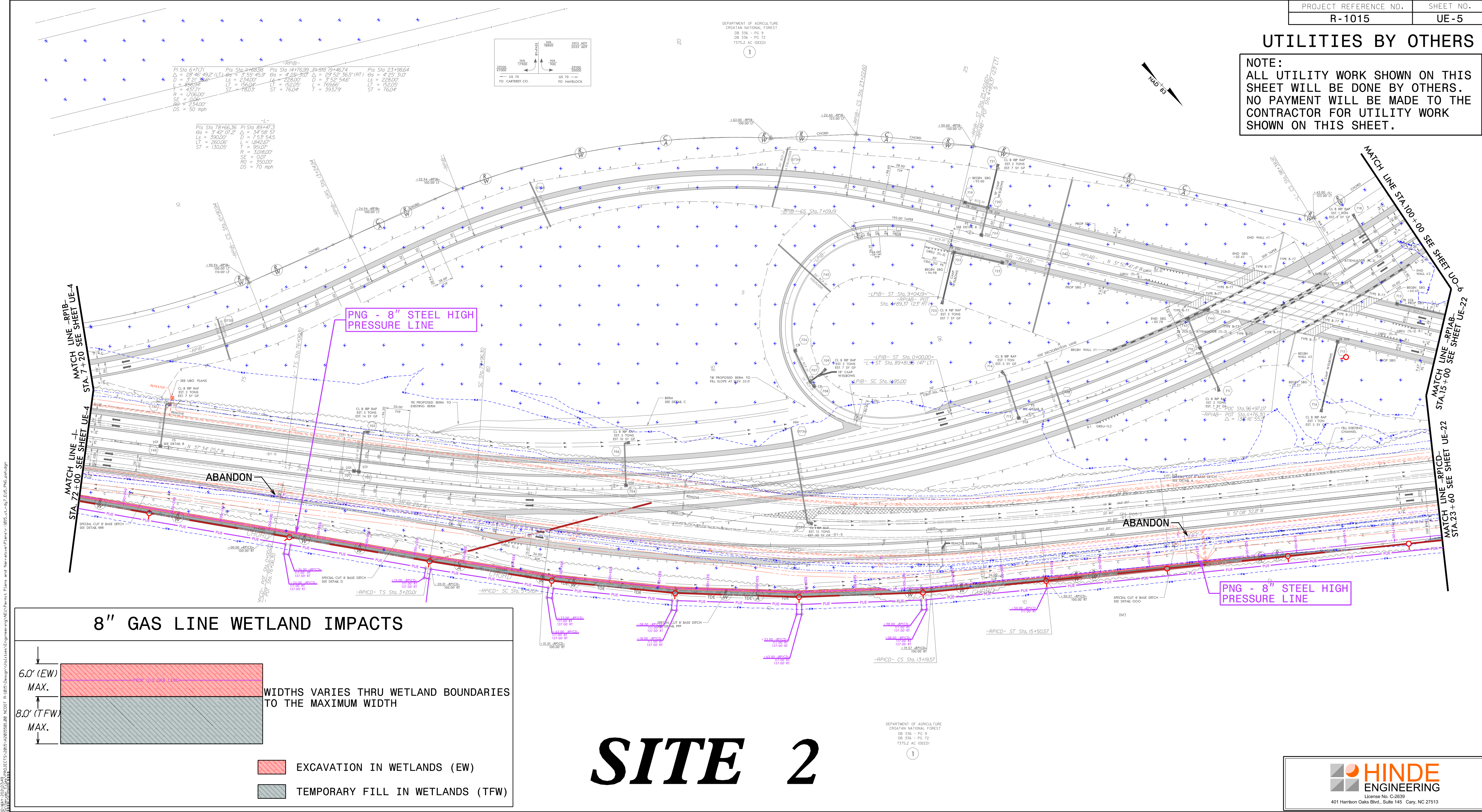




PROJECT REFERENCE NO.	SHEET NO.
R-1015	UE-5

**UTILITIES BY OTHERS**

**NOTE:**  
ALL UTILITY WORK SHOWN ON THIS SHEET WILL BE DONE BY OTHERS. NO PAYMENT WILL BE MADE TO THE CONTRACTOR FOR UTILITY WORK SHOWN ON THIS SHEET.



**8" GAS LINE WETLAND IMPACTS**

6.0' (EW) MAX.		WIDTHS VARIES THRU WETLAND BOUNDARIES TO THE MAXIMUM WIDTH
8.0' (TFW) MAX.		

- EXCAVATION IN WETLANDS (EW)
- TEMPORARY FILL IN WETLANDS (TFW)

**SITE 2**

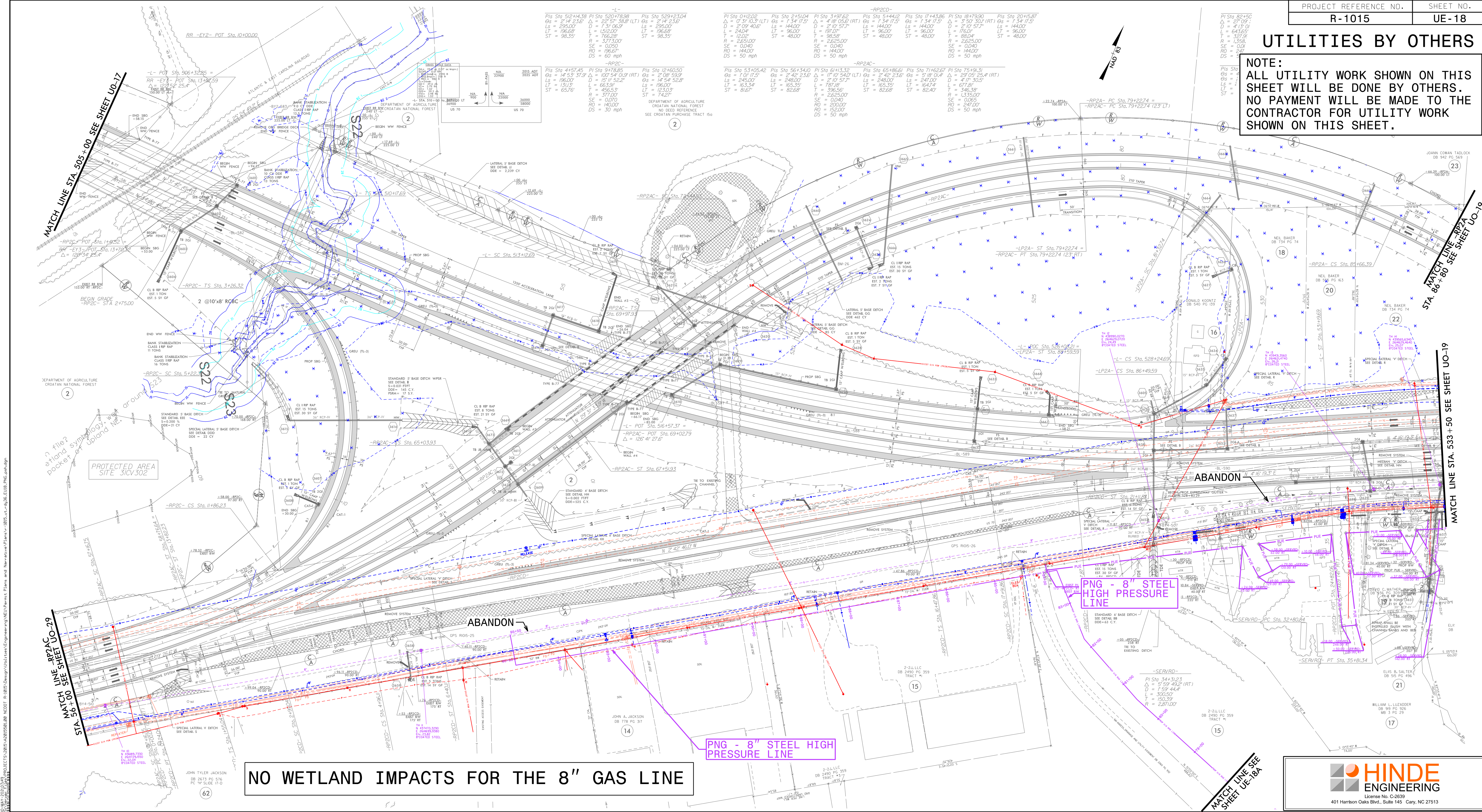
**HINDE ENGINEERING**  
License No. C-2839  
401 Harrison Oaks Blvd., Suite 145 Cary, NC 27513

UBO PLANS ARE FOR INFORMATION ONLY AND ARE NOT TO BE USED FOR CONSTRUCTION. ALL PROPOSED RELOCATION INFORMATION SHOWN ON THE UBO PLANS WAS PROVIDED BY 3RD PARTIES. HINDE ENGINEERING, INC. ASSUMES NO RESPONSIBILITY OR LIABILITY FOR THE ACCURACY OR VALIDITY OF 3RD PARTY INFORMATION PROVIDED.



### UTILITIES BY OTHERS

NOTE:  
ALL UTILITY WORK SHOWN ON THIS SHEET WILL BE DONE BY OTHERS. NO PAYMENT WILL BE MADE TO THE CONTRACTOR FOR UTILITY WORK SHOWN ON THIS SHEET.



NO WETLAND IMPACTS FOR THE 8" GAS LINE

**HINDE ENGINEERING**  
 License No. C-2839  
 401 Harrison Oaks Blvd., Suite 148 Cary, NC 27513

UBO PLANS ARE FOR INFORMATION ONLY AND ARE NOT TO BE USED FOR CONSTRUCTION. ALL PROPOSED RELOCATION INFORMATION SHOWN ON THE UBO PLANS WAS PROVIDED BY 3RD PARTIES. HINDE ENGINEERING, INC. ASSUMES NO RESPONSIBILITY OR LIABILITY FOR THE ACCURACY OR VALIDITY OF 3RD PARTY INFORMATION PROVIDED.



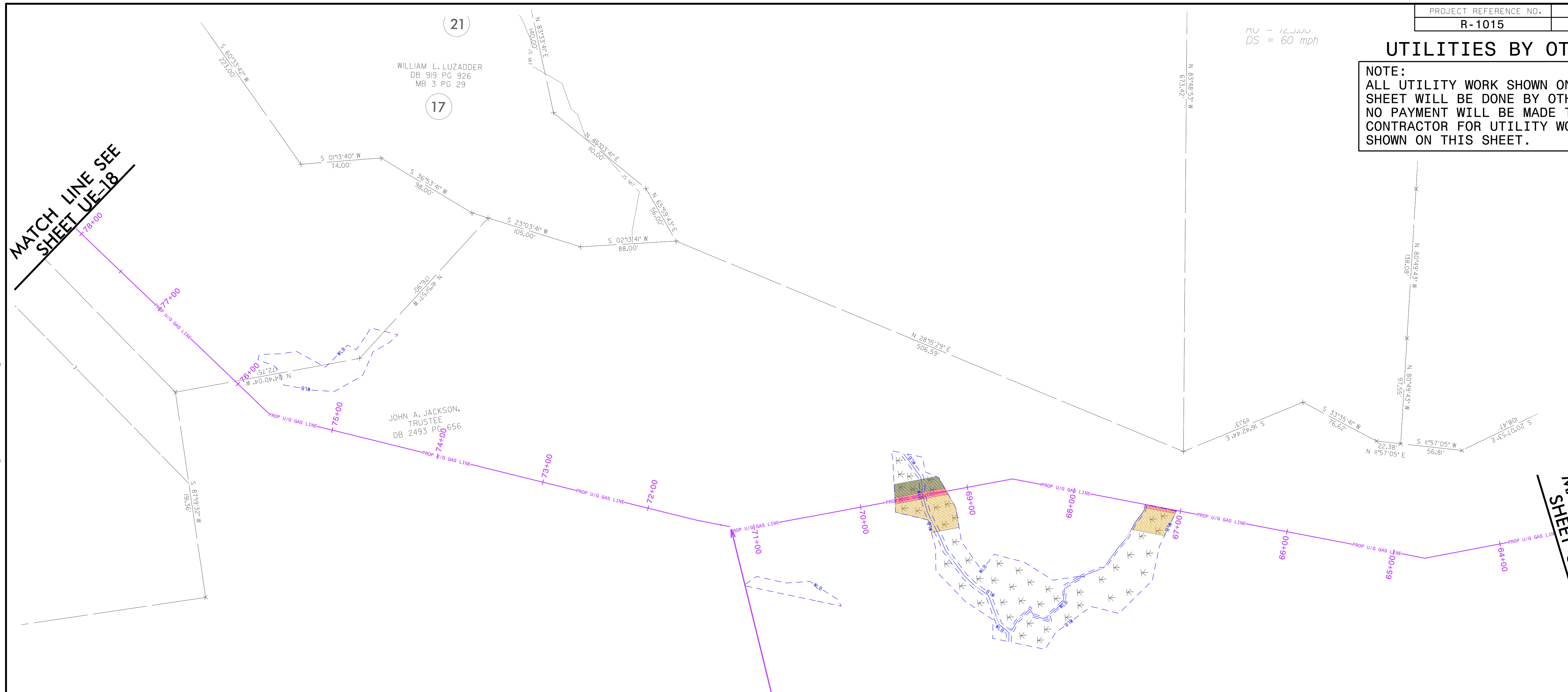
FU = 12.500  
DS = 60 mph

### UTILITIES BY OTHERS

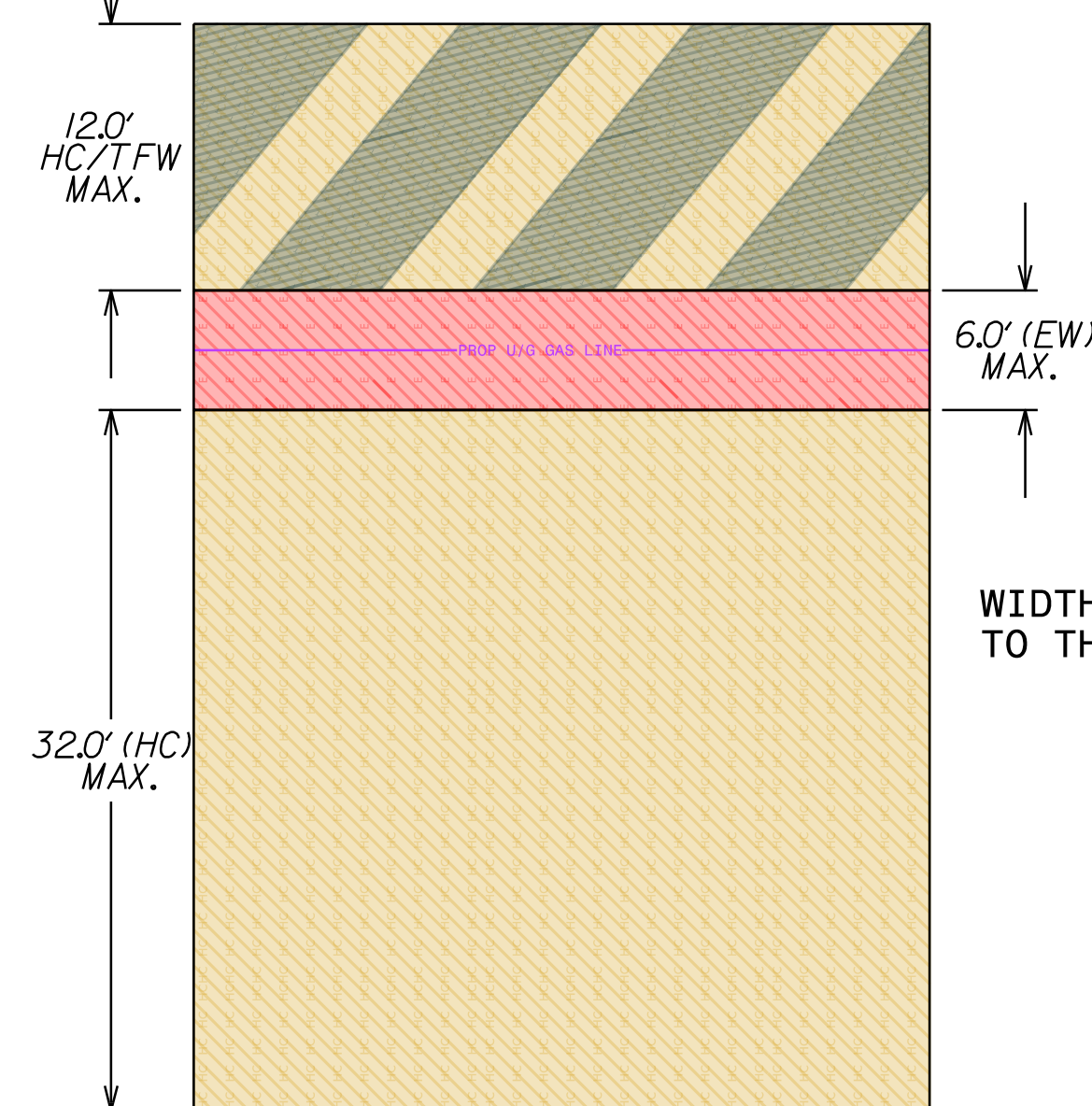
**NOTE:**  
ALL UTILITY WORK SHOWN ON THIS SHEET WILL BE DONE BY OTHERS. NO PAYMENT WILL BE MADE TO THE CONTRACTOR FOR UTILITY WORK SHOWN ON THIS SHEET.

MATCH LINE SEE SHEET UE-18




MATCH LINE SEE SHEET UE-18B



### 8" GAS LINE WETLAND IMPACTS



WIDTHS VARIES THRU WETLAND BOUNDARIES TO THE MAXIMUM WIDTH

-  HAND CLEARING LIMITS (HC)
-  EXCAVATION IN WETLANDS (EW)
-  TEMPORARY FILL IN WETLANDS (TFW)

PNG - 8" STEEL HIGH PRESSURE LINE

# NEW SITE 48



401 Harrison Oaks Blvd., Suite 145 Cary, NC 27513

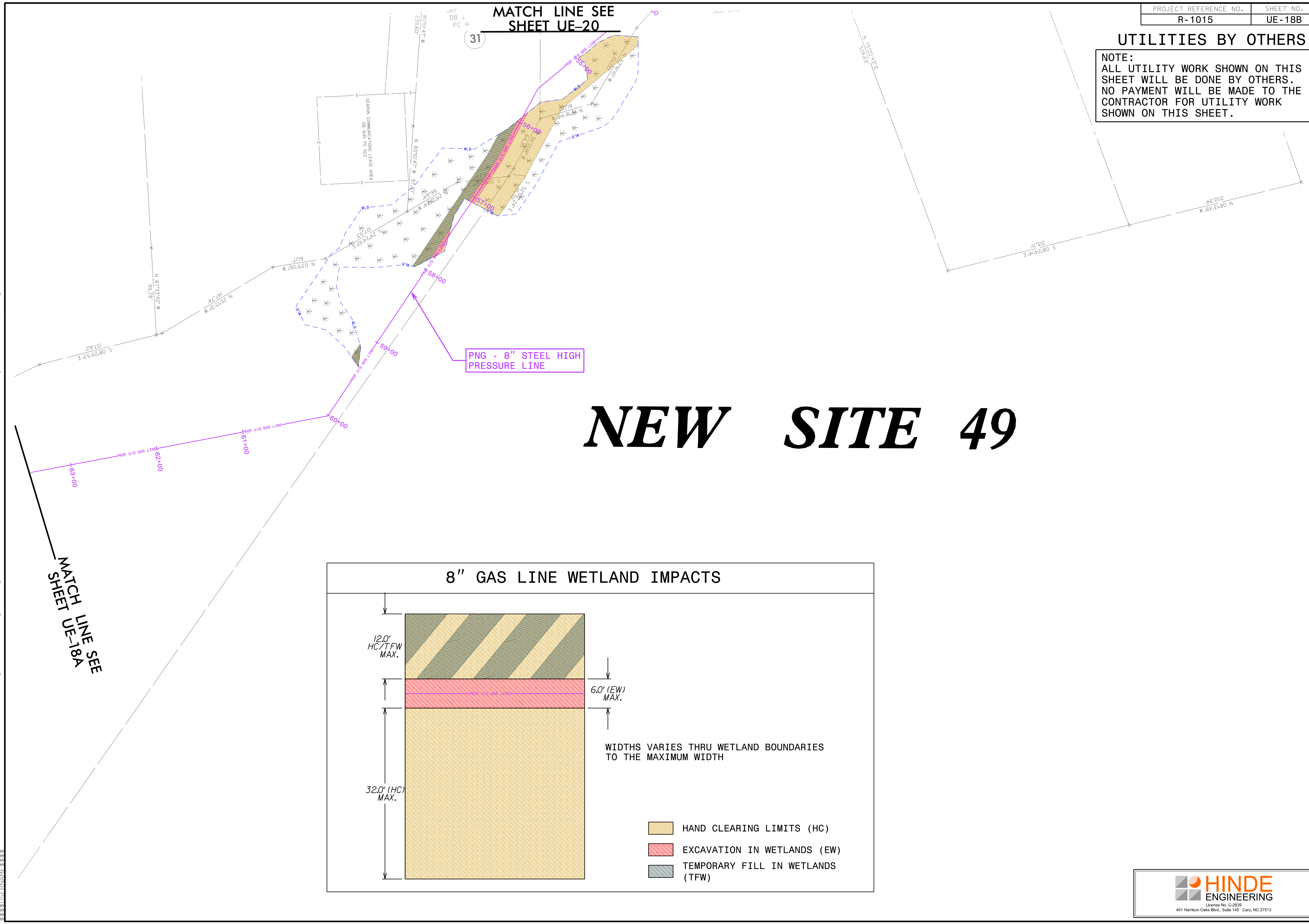
I:\MAY-2021\0749 PROJECTS\2015\A2015501.00 NCDOT R-1015\Design\Utilities\Engineering\NEU\Permit Plans and Narrative\Plans\1015.ut\_rdy36\_EU18A.PNG\_psh.dgn

### UTILITIES BY OTHERS

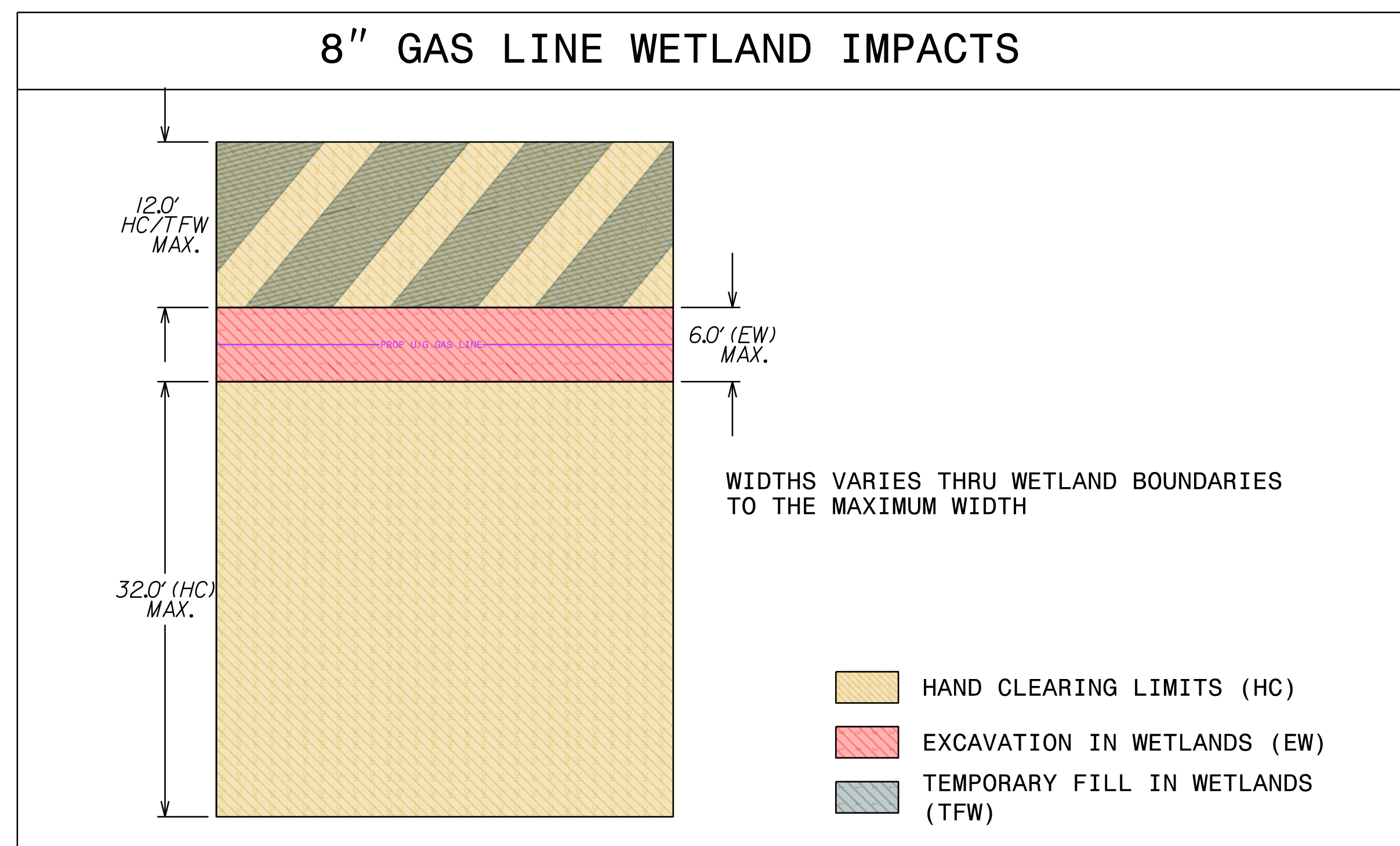
NOTE:  
 ALL UTILITY WORK SHOWN ON THIS SHEET WILL BE DONE BY OTHERS. NO PAYMENT WILL BE MADE TO THE CONTRACTOR FOR UTILITY WORK SHOWN ON THIS SHEET.

MATCH LINE SEE SHEET UE-20

31

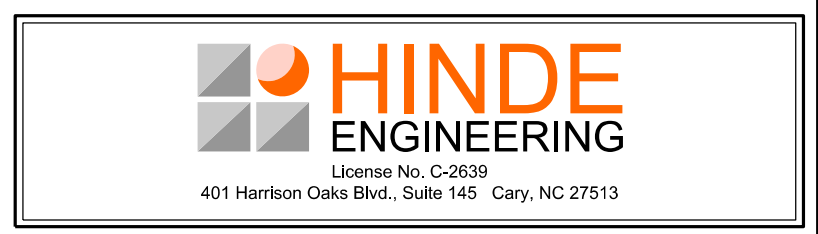


# NEW SITE 49



MATCH LINE SEE SHEET UE-18A

I:\MAY-2021\0749 PROJECTS\2015\A2015501.00 NCDOT R-1015\Design\Utilities\Engineering\NEU\Permit Plans and Narrative\Plans\1015.ut\_rdy36\_EU18B.PNG\_psh.dgn  
 5/28/2021 10:49 AM





UTILITIES BY OTHERS

NOTE:  
ALL UTILITY WORK SHOWN ON THIS SHEET WILL BE DONE BY OTHERS. NO PAYMENT WILL BE MADE TO THE CONTRACTOR FOR UTILITY WORK SHOWN ON THIS SHEET.

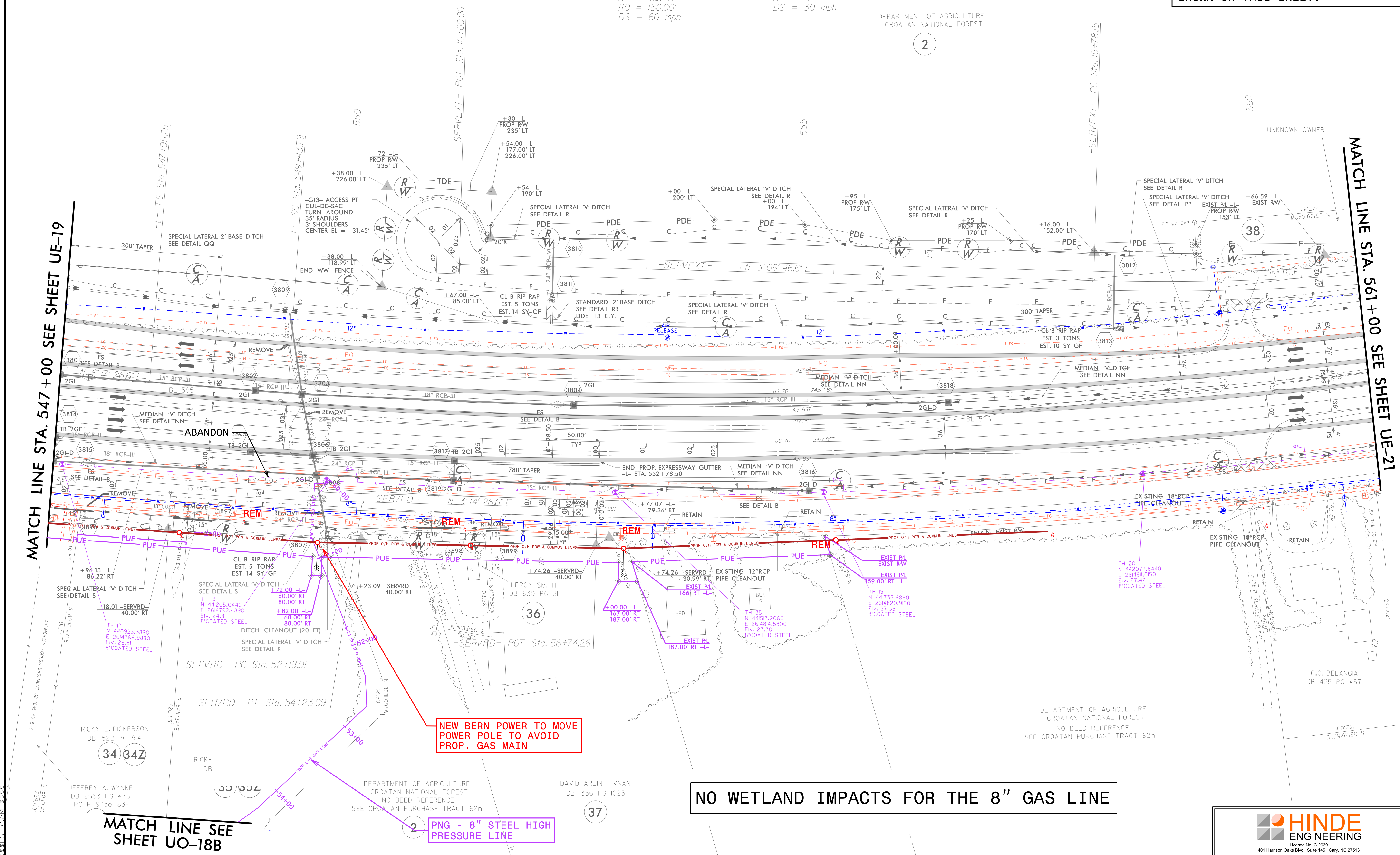
-L-  
Pls Sta 548+94.45 PI Sta 555+33.32  
Cs = 0° 38' 46.1" Δ = 10° 16' 02.6" (LT)  
Ls = 148.00' D = 0° 52' 23.3"  
LT = 98.67' L = 1,175.91'  
ST = 49.33' T = 589.53'  
R = 6,562.00'  
SE = 0.025  
RO = 150.00'  
DS = 60 mph

-SERVEXT-  
PI Sta 18+96.44 Δ = 8° 19' 25.3" (LT)  
D = 1° 54' 35.5"  
L = 435.83'  
T = 218.30'  
R = 3,000.00'  
SE = NC  
DS = 30 mph



DEPARTMENT OF AGRICULTURE  
CROATAN NATIONAL FOREST

2



MATCH LINE STA. 547 + 00 SEE SHEET UE-19

MATCH LINE STA. 561 + 00 SEE SHEET UE-21

MATCH LINE SEE SHEET UO-18B

NEW BERN POWER TO MOVE POWER POLE TO AVOID PROP. GAS MAIN

PNG - 8" STEEL HIGH PRESSURE LINE

NO WETLAND IMPACTS FOR THE 8" GAS LINE



C:\MAY-2021\0749 PROJECTS\1015\A2015501.00 NCDOT R-1015\Design\Utilities\Engineering\NEU\Permit Plans and Narrative\Plans\1015.ut\_rdg38\_EU20\_PNG\_psh.dgn



UTILITIES BY OTHERS

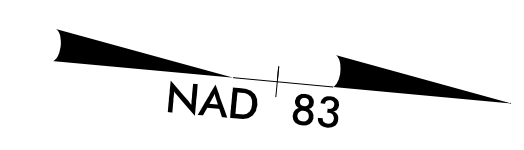
NOTE: ALL UTILITY WORK SHOWN ON THIS SHEET WILL BE DONE BY OTHERS. NO PAYMENT WILL BE MADE TO THE CONTRACTOR FOR UTILITY WORK SHOWN ON THIS SHEET.

DEPARTMENT OF AGRICULTURE  
CROATAN NATIONAL FOREST  
NO DEED REFERENCE  
SEE CROATAN PURCHASE TRACT 62n

-L-  
PI Sta 555+33.32  
 $\Delta = 10' 16" 02.6" (LT)$   
 $D = 0' 52" 23.3"$   
 $L = 1,175.91'$   
 $T = 589.53'$   
 $R = 6,562.00'$   
 $SE = 0.025$   
 $RO = 148.00'$   
 $DS = 60 \text{ mph}$

-SERVEXT-  
PIs Sta 561+69.03  
 $\Theta_s = 0' 38" 46.1"$   
 $L_s = 148.00'$   
 $LT = 98.67'$   
 $ST = 49.33'$

-SERVEXT-  
PI Sta 18+96.44  
 $\Delta = 8' 19" 25.3" (LT)$   
 $D = 1' 54" 35.5"$   
 $L = 435.83'$   
 $T = 218.30'$   
 $R = 3,000.00'$   
 $SE = NC$   
 $DS = 30 \text{ mph}$



ROBERT B. HARDISON  
DB 1006 PG 50  
PC C SLD 214

RAYMOND W. HARDISON  
DB 1007 PG 332  
PC C SLD 214

BARBARA H. CIBBLE  
DB 1488 PG 477

TH 26  
N 443597.540  
E 264673.6200  
Elev. 25.79  
8" COATED STEEL

SAMMY E. EBRON  
DB 832 PG 595

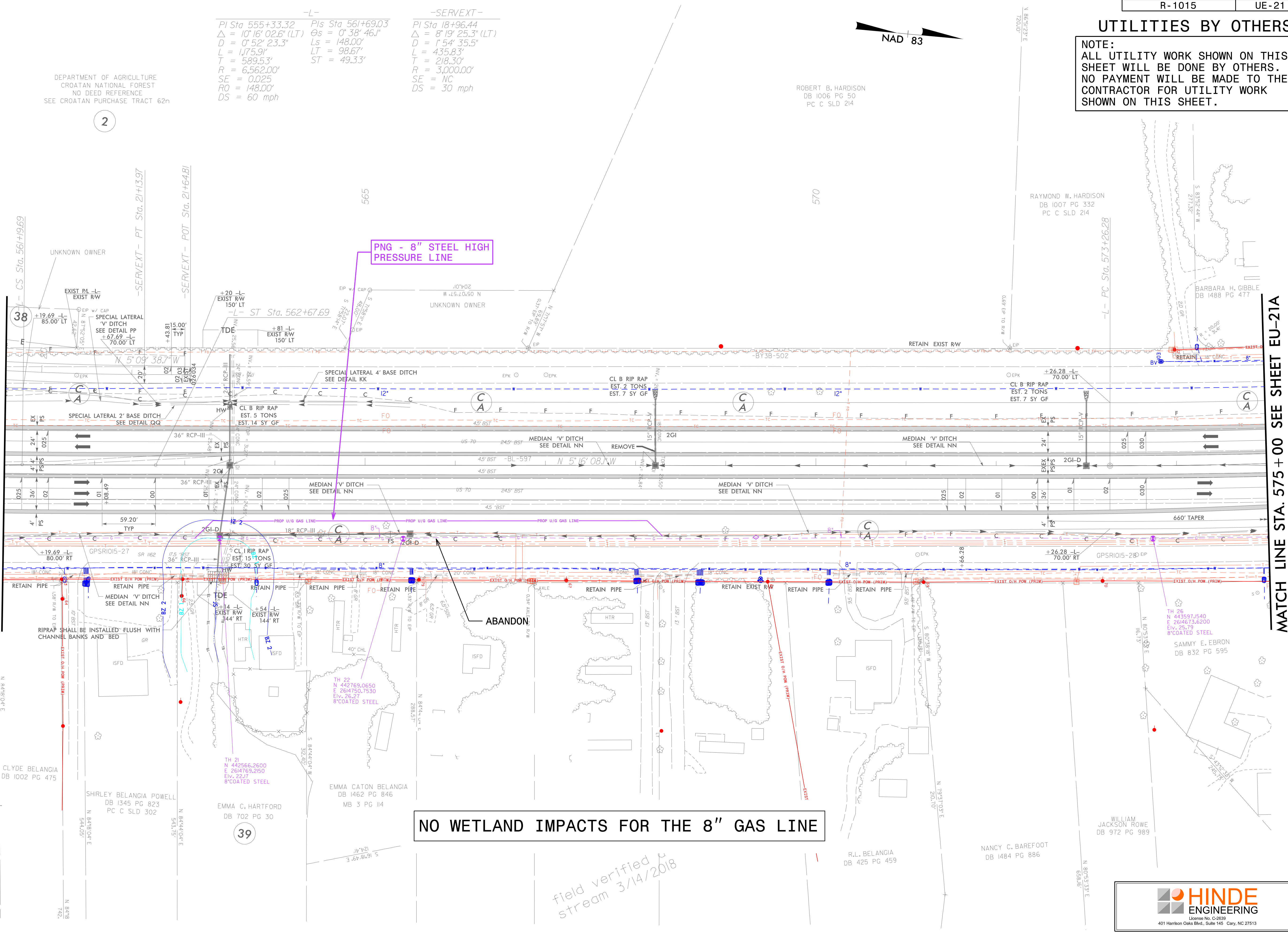
WILLIAM  
JACKSON ROWE  
DB 972 PG 989

R.L. BELANGIA  
DB 425 PG 459

NANCY C. BAREFOOT  
DB 1484 PG 886

MATCH LINE STA. 561+00 SEE SHEET UE-20

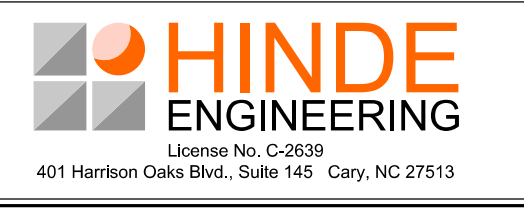
MATCH LINE STA. 575+00 SEE SHEET EU-21A



PNG - 8" STEEL HIGH  
PRESSURE LINE

NO WETLAND IMPACTS FOR THE 8" GAS LINE

field verified  
stream 3/14/2018

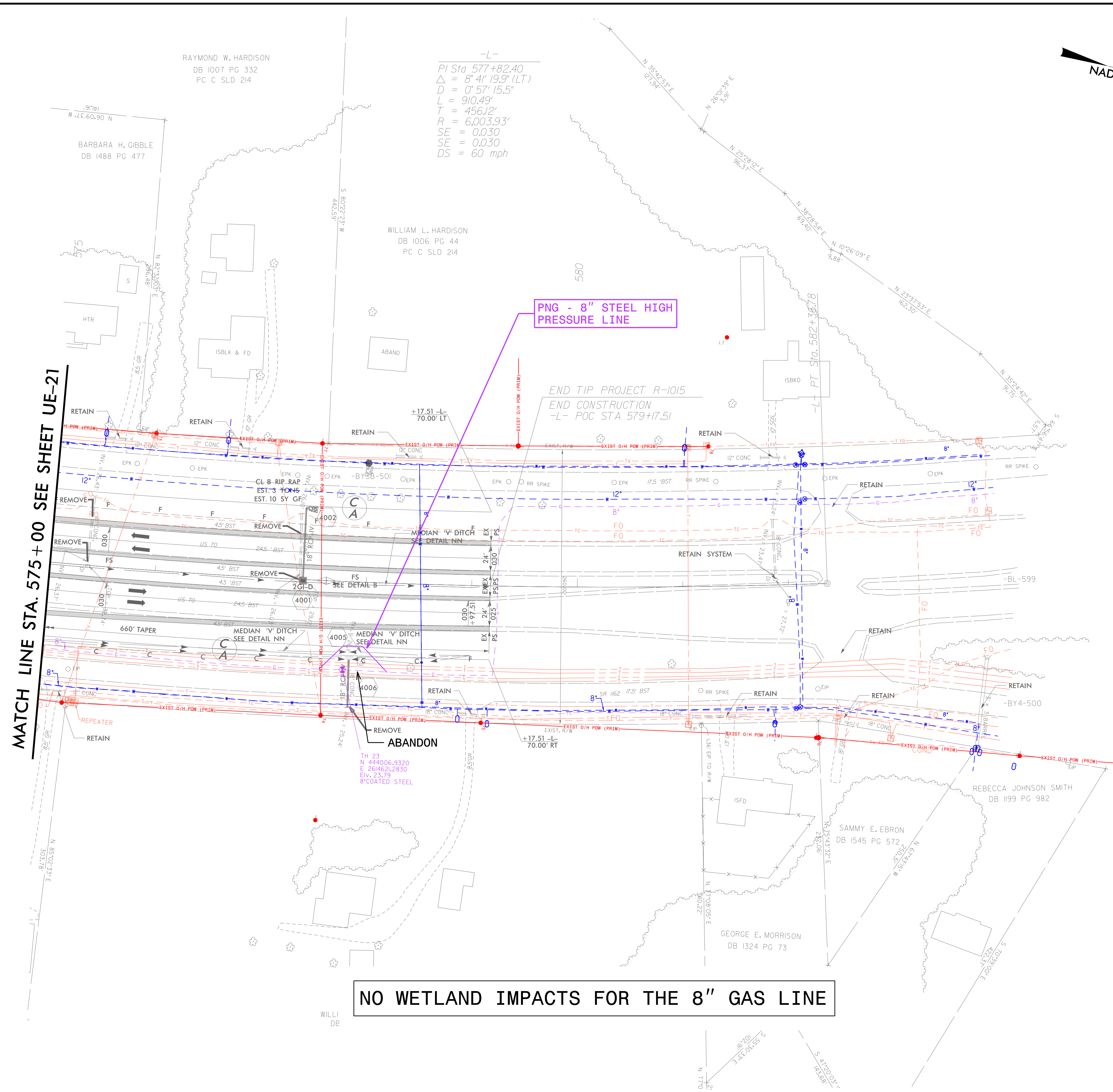
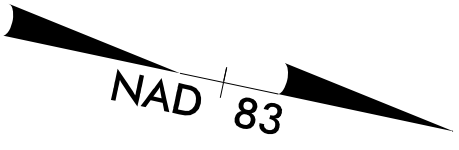


I:\MAY-2021\0750 PROJECTS\2015\A2015501.00 NCDOT R-1015\Design\Utilities\Engineering\NEU\Permit Plans and Narrative\Plans\1015.ut...rdj39\_EU21\_PNG\_psh.dgn



### UTILITIES BY OTHERS

NOTE:  
ALL UTILITY WORK SHOWN ON THIS SHEET WILL BE DONE BY OTHERS. NO PAYMENT WILL BE MADE TO THE CONTRACTOR FOR UTILITY WORK SHOWN ON THIS SHEET.



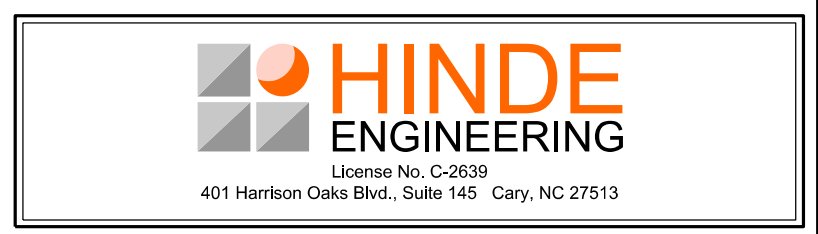
MATCH LINE STA. 575+00 SEE SHEET UE-21

**NO WETLAND IMPACTS FOR THE 8" GAS LINE**

-L-  
PI Sta 577+82.40  
 $\Delta = 8' 41'' 19.9''$  (LT)  
D = 0' 57'' 15.5"  
L = 910.49'  
T = 456.12'  
R = 6,003.93'  
SE = 0.030  
SE = 0.030  
DS = 60 mph

TH 23  
N 444006.9320  
E 2614621.2830  
Elev. 23.79  
8" COATED STEEL

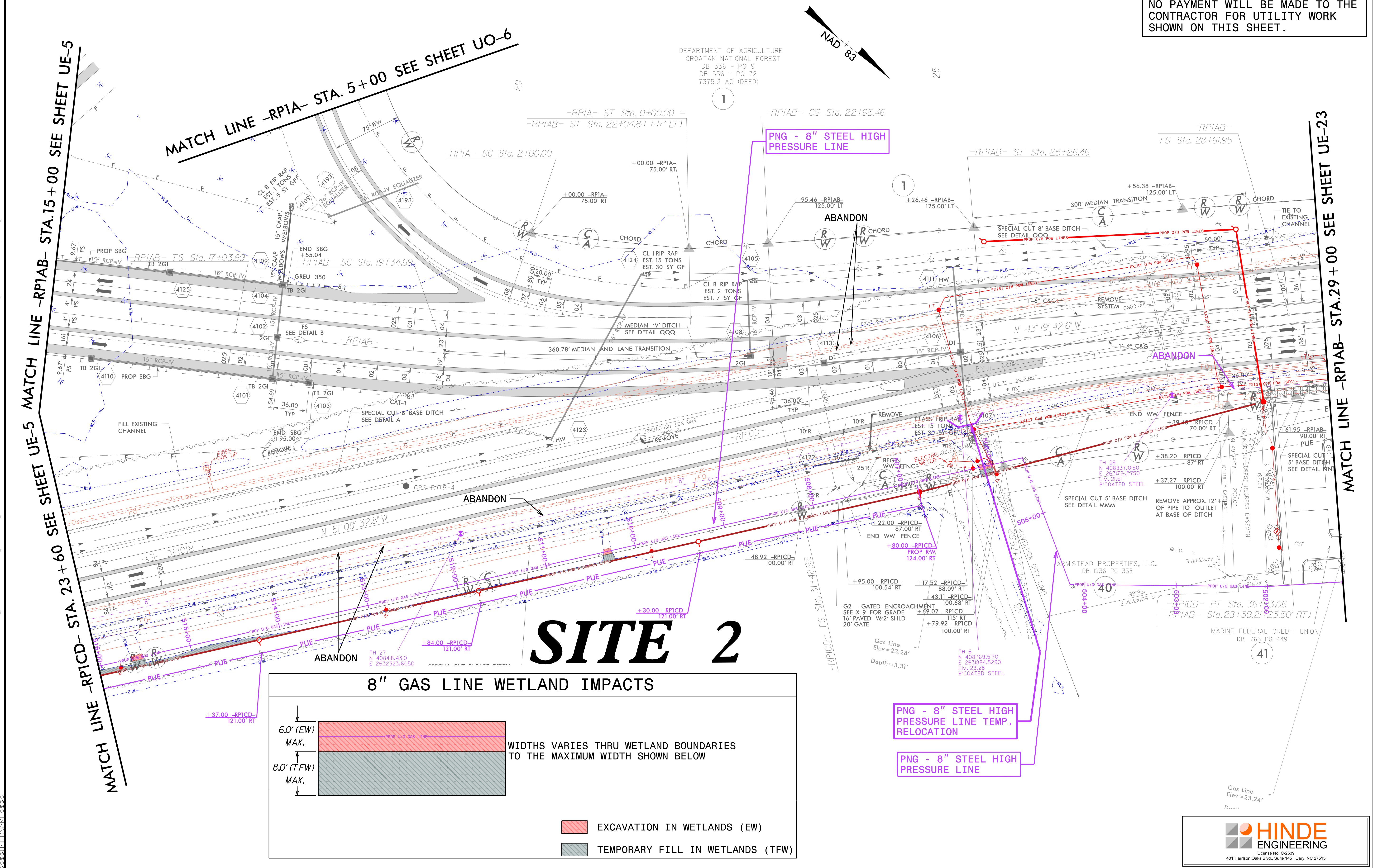
I:\MAY-2021\0750 PROJECTS\2015\A2015501.00 NCDOT R-1015\Design\Utilities\Engineering\NEU\Permit Plans and Narrative\Plans\1015.ut\_rdy\_40\_EU21A.PNG\_psh.dgn



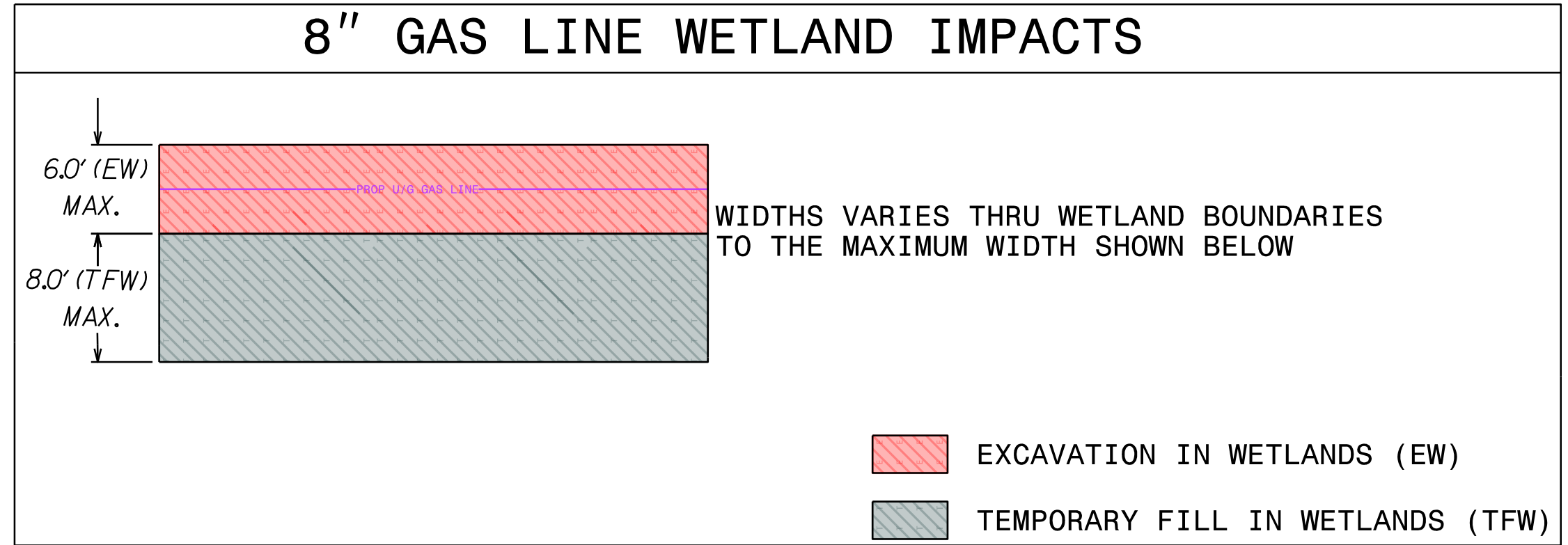


UTILITIES BY OTHERS

NOTE: ALL UTILITY WORK SHOWN ON THIS SHEET WILL BE DONE BY OTHERS. NO PAYMENT WILL BE MADE TO THE CONTRACTOR FOR UTILITY WORK SHOWN ON THIS SHEET.

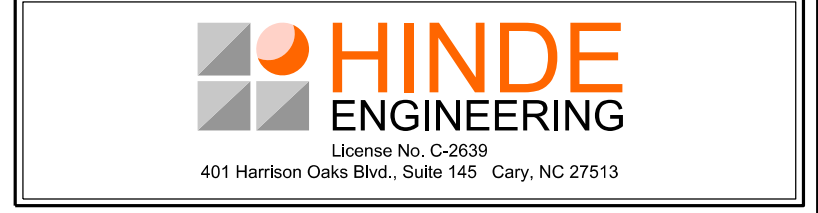


# SITE 2



C:\MAY-2021\150 PROJECTS\150\PROJECTS\150\Design\Utilities\Engineering\NEU\Permit Plans and Narrative\Plans\1015\ut-ldy41-EU22\_PNG-psb.dgn

UBO PLANS ARE FOR INFORMATION ONLY AND ARE NOT TO BE USED FOR CONSTRUCTION. ALL PROPOSED RELOCATION INFORMATION SHOWN ON THE UBO PLANS WAS PROVIDED BY 3RD PARTIES. HINDE ENGINEERING, INC. ASSUMES NO RESPONSIBILITY OR LIABILITY FOR THE ACCURACY OR VALIDITY OF 3RD PARTY INFORMATION PROVIDED.

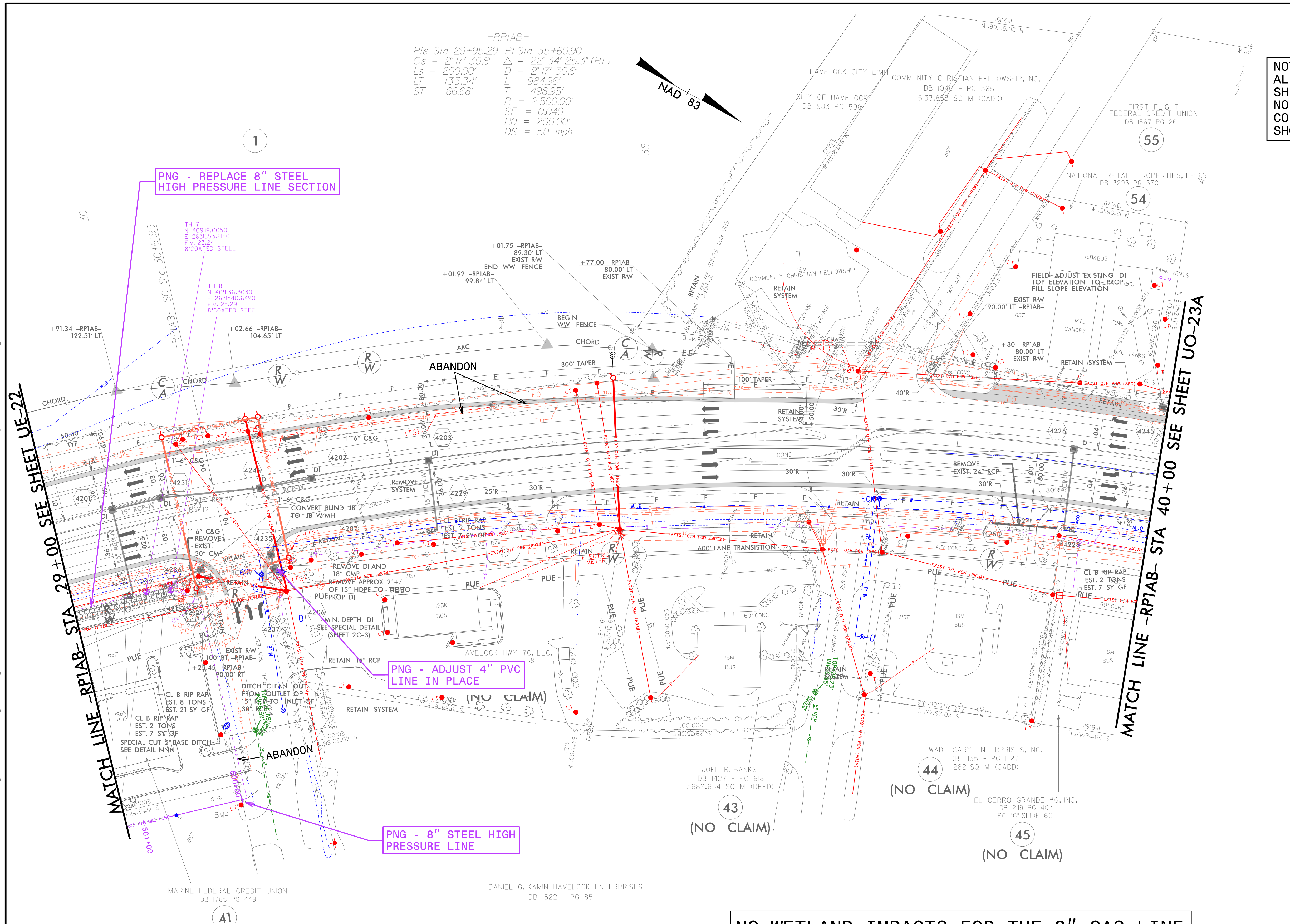
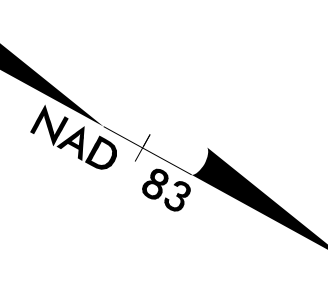




UTILITIES BY OTHERS

NOTE: ALL UTILITY WORK SHOWN ON THIS SHEET WILL BE DONE BY OTHERS. NO PAYMENT WILL BE MADE TO THE CONTRACTOR FOR UTILITY WORK SHOWN ON THIS SHEET.

-RPIAB-  
Pls Sta 29+95.29 PI Sta 35+60.90  
Θs = 2° 17' 30.6" Δ = 22° 34' 25.3" (RT)  
Ls = 200.00' D = 2° 17' 30.6"  
LT = 133.34' L = 984.96'  
ST = 66.68' T = 498.95'  
SE = 2,500.00'  
RO = 200.00'  
DS = 50 mph



MATCH LINE -RPIAB- STA 29+00 SEE SHEET UE-22

MATCH LINE -RPIAB- STA 40+00 SEE SHEET UO-23A

PNG - ADJUST 4" PVC LINE IN PLACE

PNG - 8" STEEL HIGH PRESSURE LINE

NO WETLAND IMPACTS FOR THE 8" GAS LINE

PEDESTALS WILL BE RELOCATED TO CLEAR FOR CONSTRUCTION

I:\MAY-2021\PROJECTS\2015\A2015501.000\_NCDOT\_R-1015\Design\Utilities\Engineering\NEU\Permit\_Plans\_and\_Narrative\Plans\A-1015\_ut\_rdy\_42\_EU23\_PNG\_psh.dgn

