



STATE OF NORTH CAROLINA  
DEPARTMENT OF TRANSPORTATION

ROY COOPER  
GOVERNOR

J.R. "JOEY" HOPKINS  
SECRETARY

June 18, 2024

NC Dept. of Environmental Quality  
Division of Coastal Management  
400 Commerce Street  
Moorhead City, NC 28557

ATTN: Mr. Stephen Lane, NCDOT Coordinator

Subject: **CAMA Major Development Permit Modification** for the Proposed Replacement of Bridge No. 9 on SR 1112 (Mouth of The Creek Rd) over Blounts Creek in Beaufort County, North Carolina; TIP No. B-5614; WBS No. 45569.1.2.

Dear Mr. Lane:

The Department requests modification for utilities installation for B-5614.

The revisions are listed below:

At Site 2, the previously proposed Tideland EMC power pole needs to be shifted to nearby stationing Drive-PT 12+03.49 to accommodate an existing underground line located in the path of the current permitted power pole. The underground line was discovered after the permit was issued.

The new pole placement will be located adjacent to the existing cable and will tie in. The permitted location would have required partially installing underground cable in the wetland to tie to the existing cable and thus create permanent wetland impacts.

The shift of the utility pole location will require an additional 0.01 acres of hand clearing in wetland at Site 2, increasing the total hand clearing impacts from 0.15 to 0.16 acres. The shift of the utility pole will also require an additional 7 square feet of impact in Buffer Zone 2. The increase in buffer impacts at Blounts Creek makes the new total of Buffer Zone 2 impacts 112 square feet. In as much, there will be a reduction in Buffer Zone 1 impacts decreasing from 203 to 0 square feet.

At the bridge, Brightspeed cable will be placed under Blounts Creek instead of terminating at both ends of the bridge. This change will not result in any new impacts.

Please see enclosed copies of the revised utility plans for the above referenced project.

Please debit the appropriate fee for the permit modification from WBS No. 45569.1.2  
Should you have any questions regarding this information, please contact Deanna Riffey at (919) 707-6151 or [driffey@ncdot.gov](mailto:driffey@ncdot.gov).

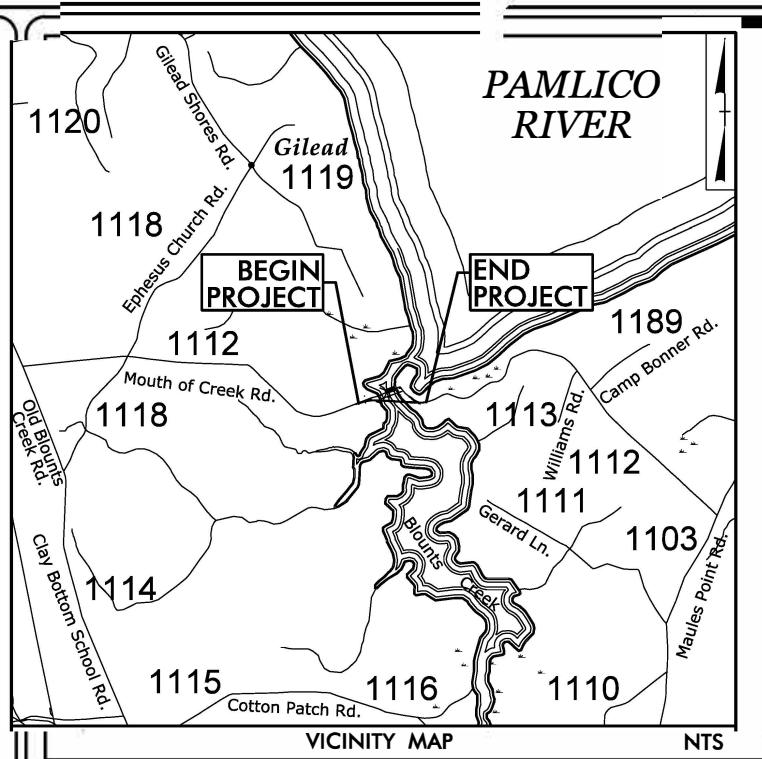
Sincerely,

A handwritten signature in black ink that reads "Michael Luby". The signature is fluid and cursive, with a long horizontal stroke at the end.

*for*  
Jason Dilday, Eastern Team Lead  
Environmental Coordination and Permitting Group

cc: Cathy Brittingham, NCDPCM Raleigh

CONTRACT: TIP PROJECT: B-5614



STATE OF NORTH CAROLINA  
DIVISION OF HIGHWAYS

# UTILITY ENVIRONMENTAL PERMIT DRAWING

LOCATION: BRIDGE NO. 9 ON SR 1112  
OVER BLOUNTS CREEK

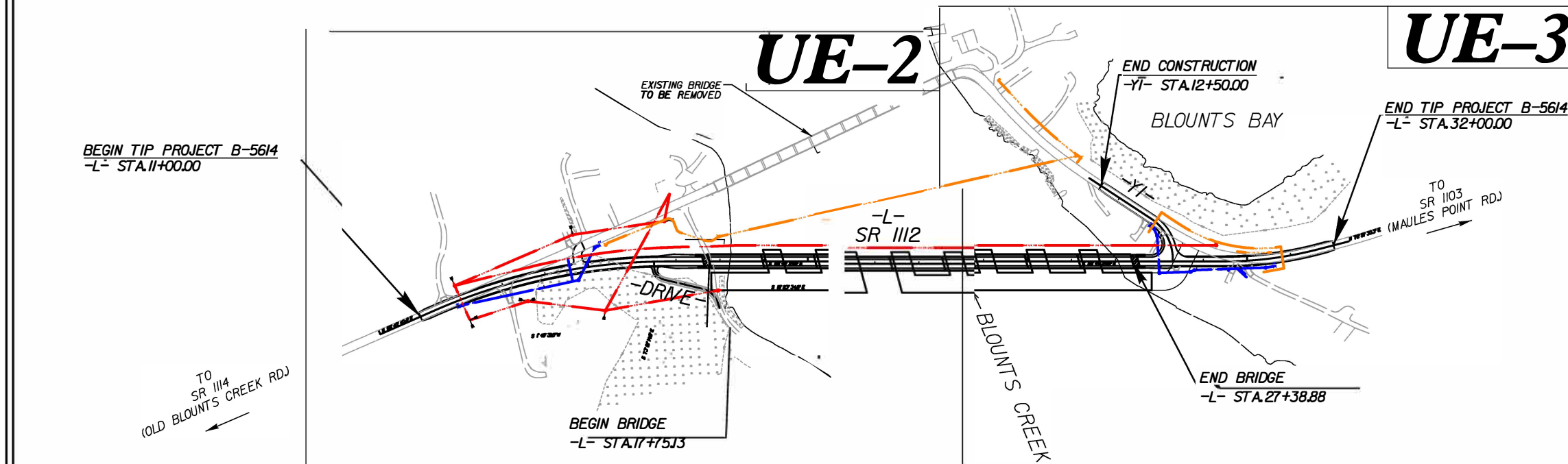
TYPE OF WORK: TELECOMMUNICATIONS, POWER RELOCATION,  
AND WATERLINE RELOCATION

WETLAND AND SURFACE WATER IMPACTS PERMIT

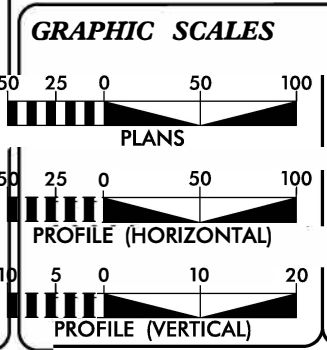
TIP NO. <b>B-5614</b>	SHEET NO. <b>UE-1</b>
--------------------------	--------------------------

PRELIMINARY PLANS  
DO NOT USE FOR CONSTRUCTION

**PERMIT DRAWING  
SHEET 1 OF 11  
Revised May 21, 2024**



**INCOMPLETE PLANS  
DO NOT USE FOR R/W ACQUISITION  
DOCUMENT NOT CONSIDERED FINAL  
UNLESS ALL SIGNATURES COMPLETED**



SHEET NO.	DESCRIPTION
UE-1	WETLAND IMPACT TITLE SHEET
UE-2 through UE-5	UTILITY WETLAND IMPACTS
UE-6	WATER PROFILE SHEET
UE-7	POWER BORE PLAN AND PROFILE SHEET
UE-8 through UE-10	POWER PROFILE SHEET

UTILITY OWNERS ON PROJECT	
(A)	LUMEN (CENTURY LINK) - TELECOMMUNICATIONS
(B)	TIDELAND EMC - POWER
WATER AND SEWER OWNERS ON PROJECT	
(A)	WATER - BEAUFORT COUNTY

Prepared in the Offices of:

223 S. WEST ST. STE 1100  
RALEIGH, NC 27603  
T 919.360.8790

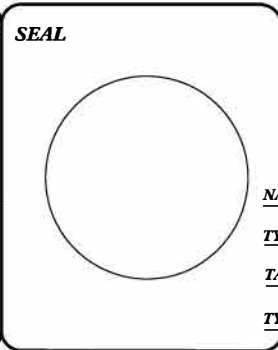
VHB Engineering NC, P.C. (C-3705)  
840 Main Campus Drive, Suite 500  
Raleigh, NC 27606

---

MICHAEL BURNS, PE PROJECT ENGINEER

---

JOSHUA ROEMER PROJECT DESIGN ENGINEER



DIVISION OF HIGHWAYS UTILITIES UNIT 155 MAIL SERVICES CENTER RALEIGH NC 27699-1555 PHONE (919) 707-6690 FAX (919) 250-4151	
NABIL HAMDAN	UTILITIES REGIONAL ENGINEER
TYRON W. STALLINGS	UTILITIES ENGINEER
TANGA SAMPSON	UTILITIES AREA COORDINATOR
TYRON W. STALLINGS	UTILITIES COORDINATOR

I:\48450\_AM\_R:\Hydro\Utilities\PERMITS-Environmental\Draw ngs\ut ty Impacts\B5614\_Hyd\_prm\_power\_TSH.dgn  
T:\cuplpepper

UTILITIES BY OTHERS/UTILITY CONSTRUCTION

NOTE:  
 ALL PROPOSED UTILITY WORK SHOWN ON THIS SHEET WILL BE DONE BY OTHERS



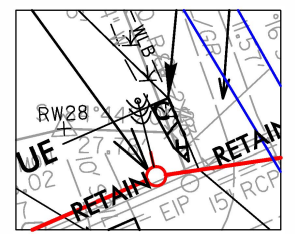
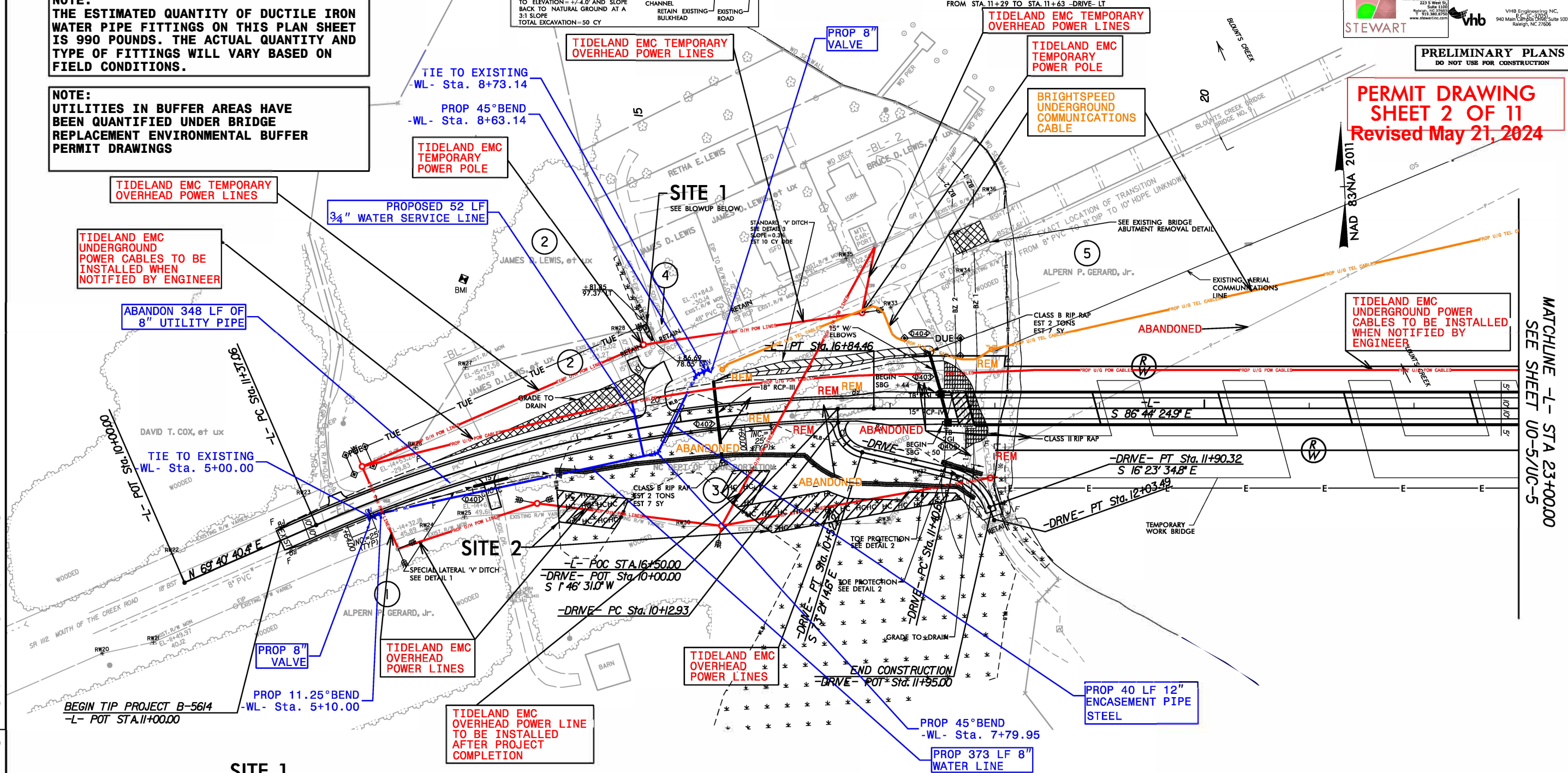
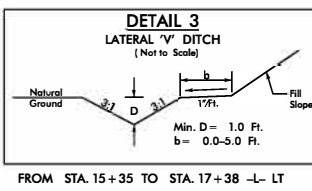
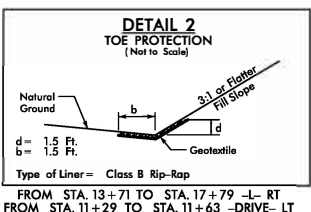
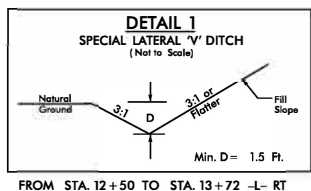
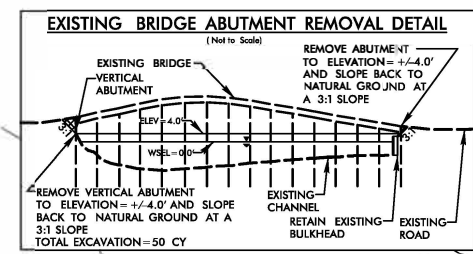
PRELIMINARY PLANS  
 DO NOT USE FOR CONSTRUCTION

PERMIT DRAWING  
 SHEET 2 OF 11  
 Revised May 21, 2024

NOTE:  
 CONTRACTOR IS REQUIRED TO ENSURE ALL BENDS UTILIZE JOINT RESTRAINTS.

NOTE:  
 THE ESTIMATED QUANTITY OF DUCTILE IRON WATER PIPE FITTINGS ON THIS PLAN SHEET IS 990 POUNDS. THE ACTUAL QUANTITY AND TYPE OF FITTINGS WILL VARY BASED ON FIELD CONDITIONS.

NOTE:  
 UTILITIES IN BUFFER AREAS HAVE BEEN QUANTIFIED UNDER BRIDGE REPLACEMENT ENVIRONMENTAL BUFFER PERMIT DRAWINGS



TIDELAND EMC HAS CONFIRMED THEY WILL OBTAIN THEIR OWN EASEMENT FOR RELOCATIONS SHOWN OUTSIDE EXISTING ROW AND PROPOSED PUE

HC HC HAND CLEARING (NON-GRUBBING)

REVISIONS

I:\9418 AM R:\Hyd-rw\loc\PERMITS\_Environmental\Drawings\Utility\impacts\B5614\_Hyd-prm-power\_PSH04.dgn

MATCHLINE -L- STA 23+00.00  
 SEE SHEET U0-5/UC-5

UTILITIES BY OTHERS/UTILITY CONSTRUCTION

NOTE:  
 ALL PROPOSED UTILITY WORK SHOWN ON THIS SHEET WILL BE DONE BY OTHERS



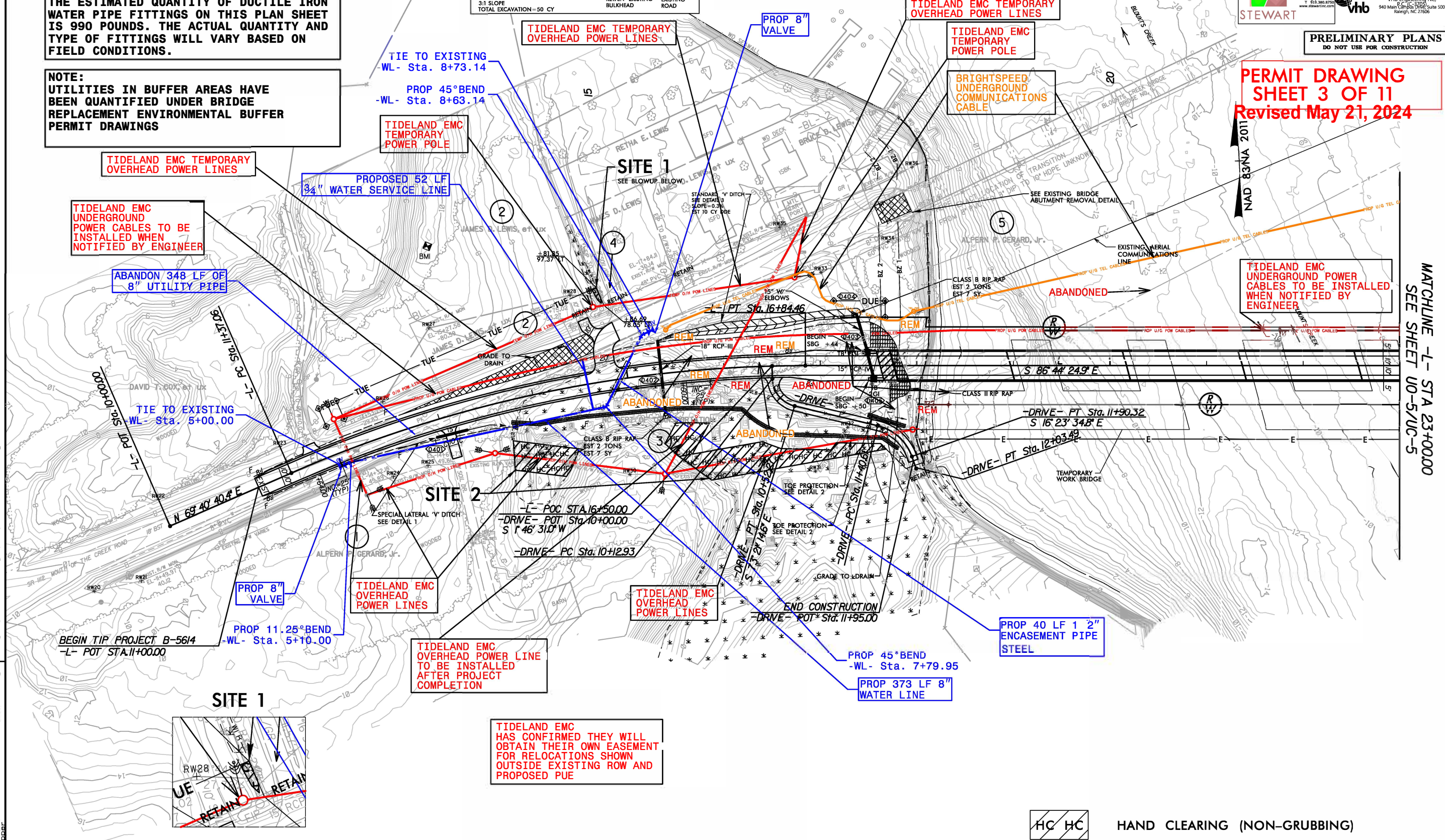
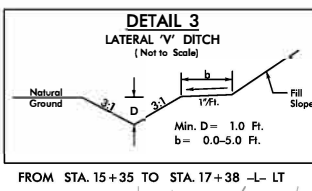
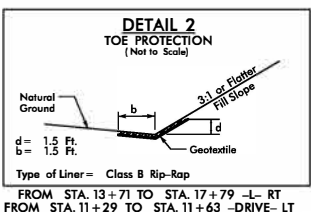
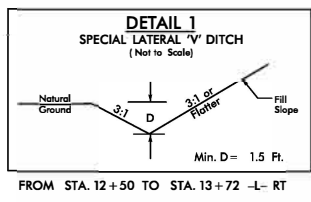
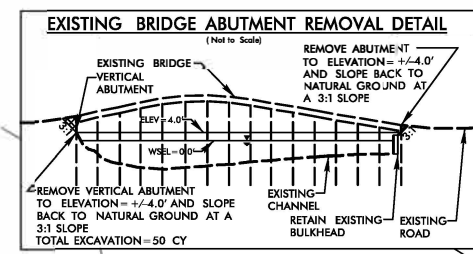
PRELIMINARY PLANS  
 DO NOT USE FOR CONSTRUCTION

PERMIT DRAWING  
 SHEET 3 OF 11  
 Revised May 21, 2024

NOTE:  
 CONTRACTOR IS REQUIRED TO ENSURE ALL BENDS UTILIZE JOINT RESTRAINTS.

NOTE:  
 THE ESTIMATED QUANTITY OF DUCTILE IRON WATER PIPE FITTINGS ON THIS PLAN SHEET IS 990 POUNDS. THE ACTUAL QUANTITY AND TYPE OF FITTINGS WILL VARY BASED ON FIELD CONDITIONS.

NOTE:  
 UTILITIES IN BUFFER AREAS HAVE BEEN QUANTIFIED UNDER BRIDGE REPLACEMENT ENVIRONMENTAL BUFFER PERMIT DRAWINGS



REVISIONS

I:\19-07-AM\Hydro\Projects\PERMITS\_Environmental\Drawings\Utility\_impacts\_B5614\_Hyd\_prm\_power\_PSH04\_con.dgn  
 5/14/24

MATCHLINE -L- STA 23+00.00  
 SEE SHEET U0-5/UC-5

HC HC HAND CLEARING (NON-GRUBBING)

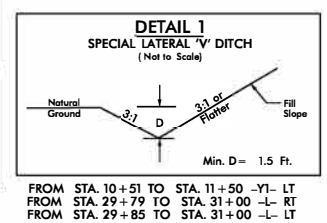
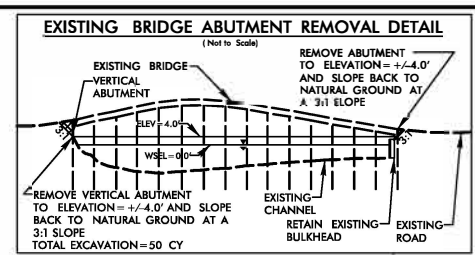
UTILITIES BY OTHERS/UTILITY CONSTRUCTION

NOTE:  
 ALL PROPOSED UTILITY WORK  
 SHOWN ON THIS SHEET WILL  
 BE DONE BY OTHERS

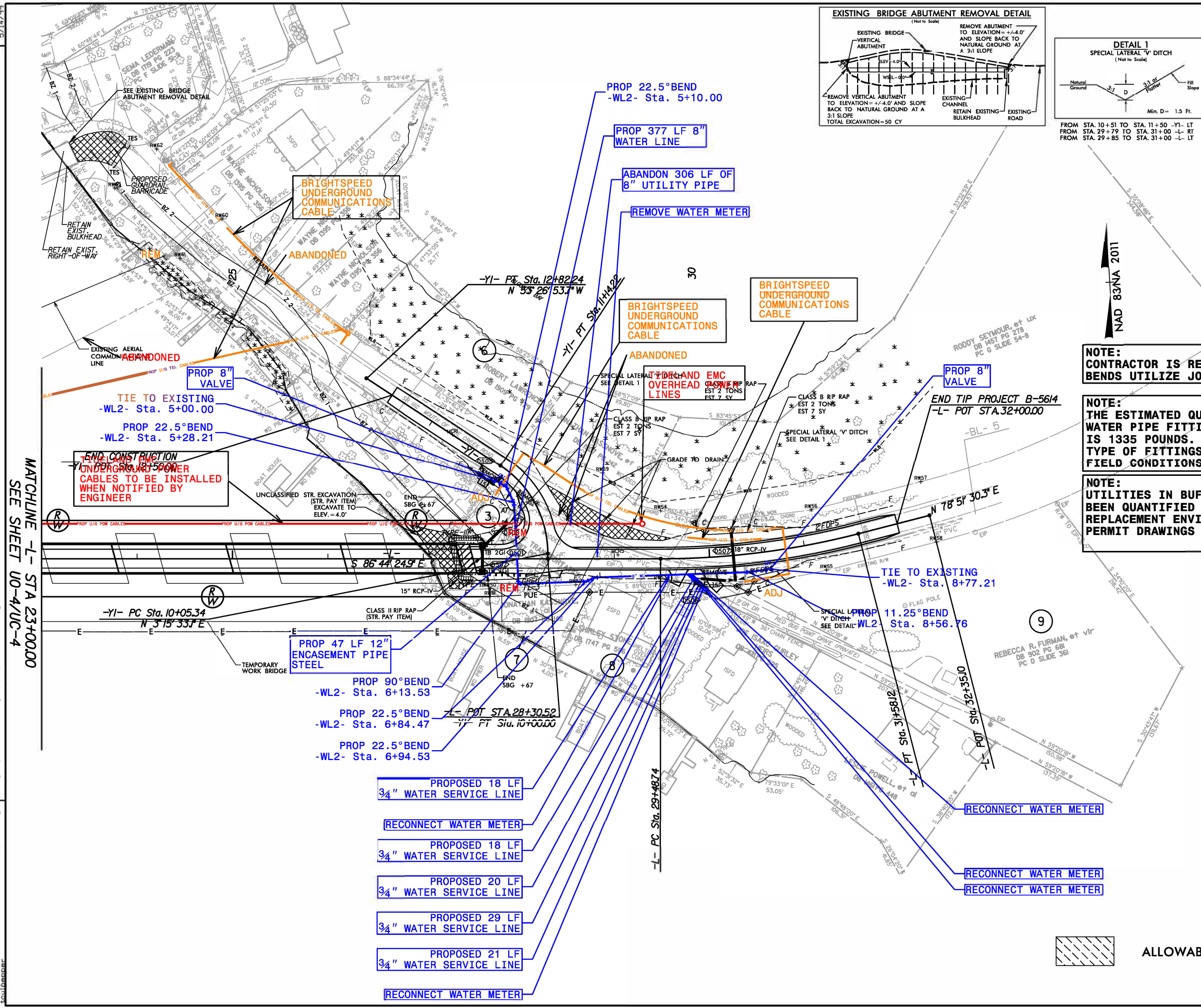


PRELIMINARY PLANS  
 DO NOT USE FOR CONSTRUCTION

**PERMIT DRAWING**  
**SHEET 4 OF 11**  
 Revised May 21, 2024



FROM STA. 10+51 TO STA. 11+50 -Y1- LT  
 FROM STA. 29+79 TO STA. 31+00 -L- RT  
 FROM STA. 29+85 TO STA. 31+00 -L- LT



NOTE:  
 CONTRACTOR IS REQUIRED TO ENSURE ALL  
 BENDS UTILIZE JOINT RESTRAINTS.

NOTE:  
 THE ESTIMATED QUANTITY OF DUCTILE IRON  
 WATER PIPE FITTINGS ON THIS PLAN SHEET  
 IS 1335 POUNDS. THE ACTUAL QUANTITY AND  
 TYPE OF FITTINGS WILL VARY BASED ON  
 FIELD CONDITIONS.

NOTE:  
 UTILITIES IN BUFFER AREAS HAVE  
 BEEN QUANTIFIED UNDER BRIDGE  
 REPLACEMENT ENVIRONMENTAL BUFFER  
 PERMIT DRAWINGS

ALLOWABLE IMPACTS ZONE 2

REVISIONS  
 MATCHLINE -L- STA 23+00.00  
 SEE SHEET UO-4/UC-4  
 I:\Projects\B5614\_Hyd\_prm\_power\_PSH05.dgn  
 5/14/24

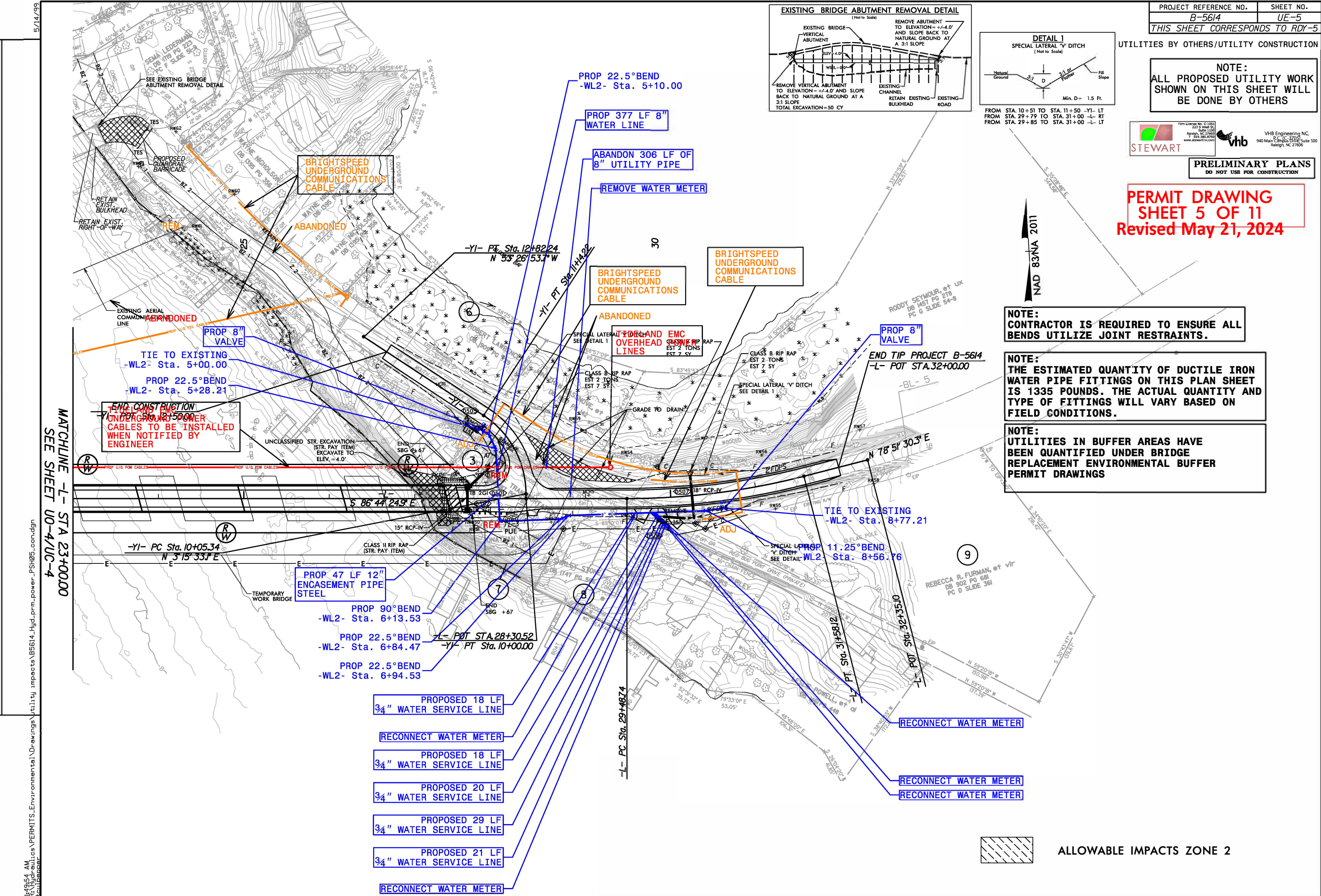
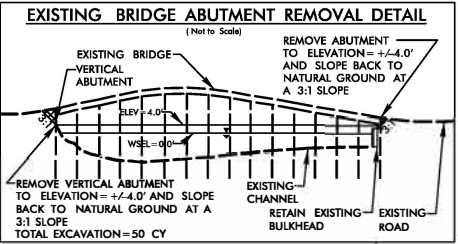
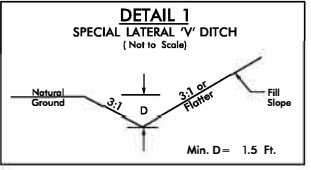
UTILITIES BY OTHERS/UTILITY CONSTRUCTION

**NOTE:**  
ALL PROPOSED UTILITY WORK SHOWN ON THIS SHEET WILL BE DONE BY OTHERS



**PRELIMINARY PLANS**  
DO NOT USE FOR CONSTRUCTION

**PERMIT DRAWING**  
**SHEET 5 OF 11**  
**Revised May 21, 2024**



**NOTE:**  
CONTRACTOR IS REQUIRED TO ENSURE ALL BENDS UTILIZE JOINT RESTRAINTS.

**NOTE:**  
THE ESTIMATED QUANTITY OF DUCTILE IRON WATER PIPE FITTINGS ON THIS PLAN SHEET IS 1335 POUNDS. THE ACTUAL QUANTITY AND TYPE OF FITTINGS WILL VARY BASED ON FIELD CONDITIONS.

**NOTE:**  
UTILITIES IN BUFFER AREAS HAVE BEEN QUANTIFIED UNDER BRIDGE REPLACEMENT ENVIRONMENTAL BUFFER PERMIT DRAWINGS

ALLOWABLE IMPACTS ZONE 2

I:\1924 AM  
 R:\Hyd\util\PERMITS\_Environmental\Drawings\Utility\impacts\B5614\_Hyd\_prm\_power\_PSH05\_con.dgn  
 5/14/24  
 11:49:54 AM  
 R:\Hyd\util\PERMITS\_Environmental\Drawings\Utility\impacts\B5614\_Hyd\_prm\_power\_PSH05\_con.dgn

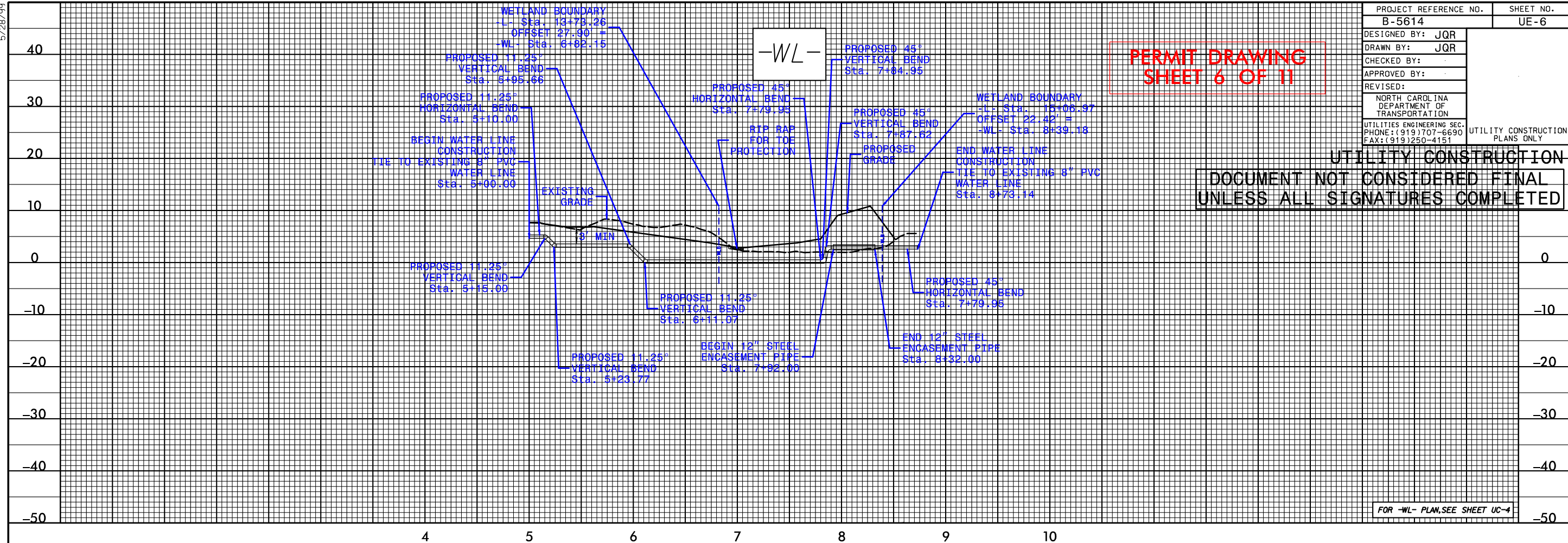
5/28/99

PROJECT REFERENCE NO. B-5614	SHEET NO. UE-6
DESIGNED BY: JQR	
DRAWN BY: JQR	
CHECKED BY:	
APPROVED BY:	
REVISED:	
NORTH CAROLINA DEPARTMENT OF TRANSPORTATION	
UTILITIES ENGINEERING SEC. PHONE: (919) 707-6690 FAX: (919) 250-4151	
UTILITY CONSTRUCTION PLANS ONLY	

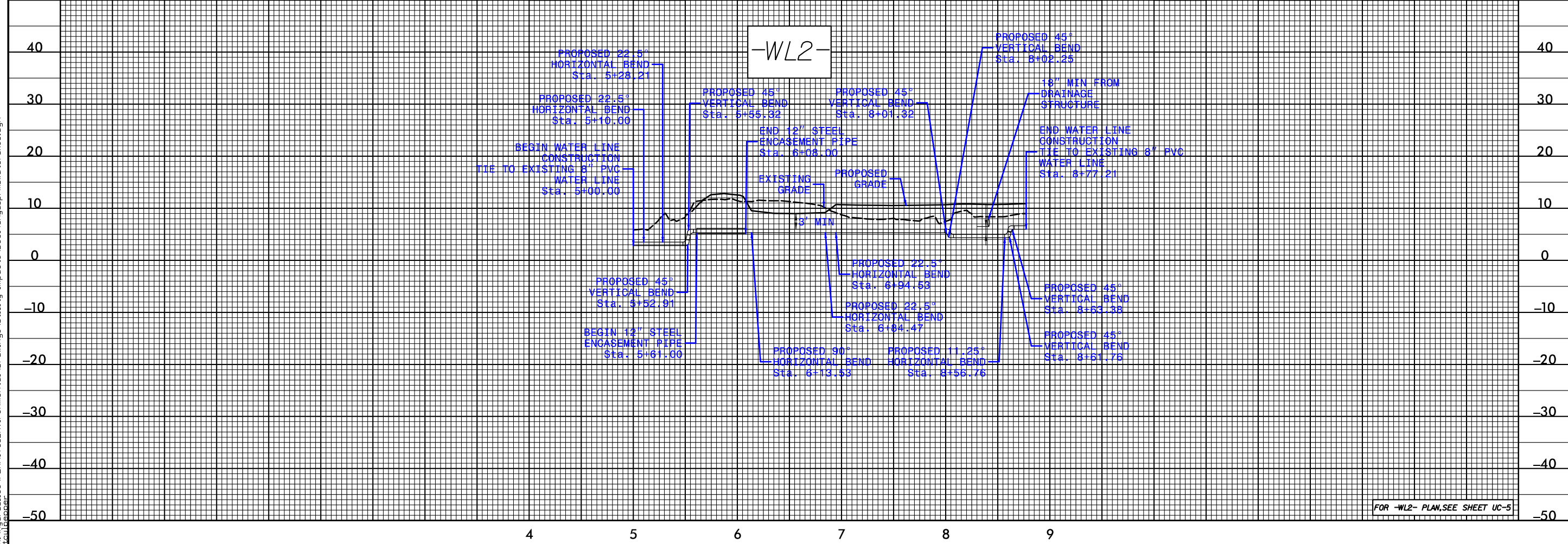
**PERMIT DRAWING  
SHEET 6 OF 11**

**UTILITY CONSTRUCTION**

**DOCUMENT NOT CONSIDERED FINAL  
UNLESS ALL SIGNATURES COMPLETED**



I:\CQ01AM\rc\fig\paulites\PERMITS\_Environmenta\Drawings\utility impacts\B5614\_Hyd.prm\_water\_xsc.dgn

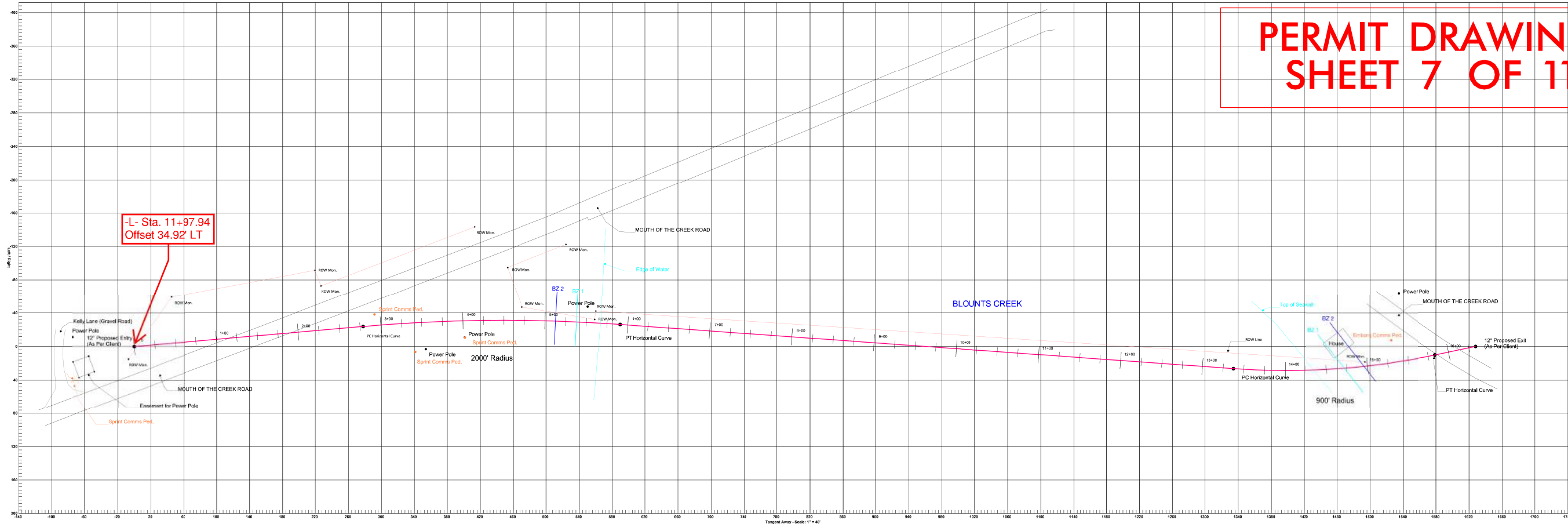




PLAN VIEW

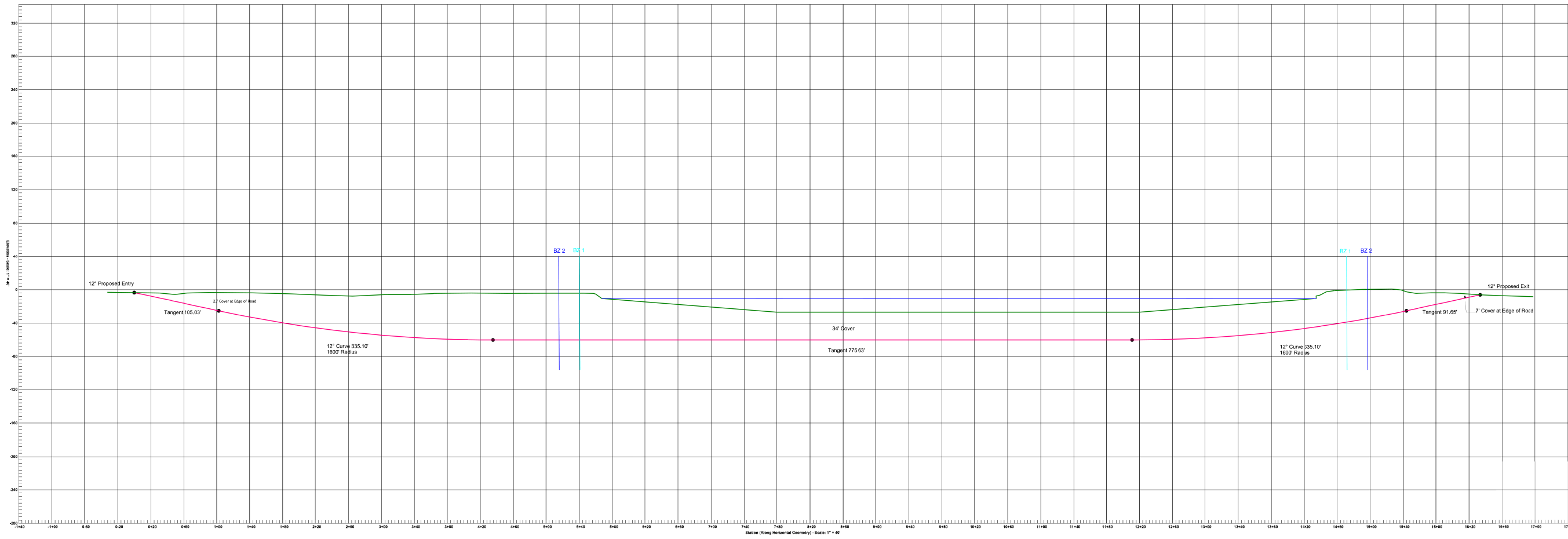
PERMIT DRAWING SHEET 7 OF 11

UE-7



PROFILE VIEW

Buffer Zone locations shown on the plans are approximate and for informational purposes only.

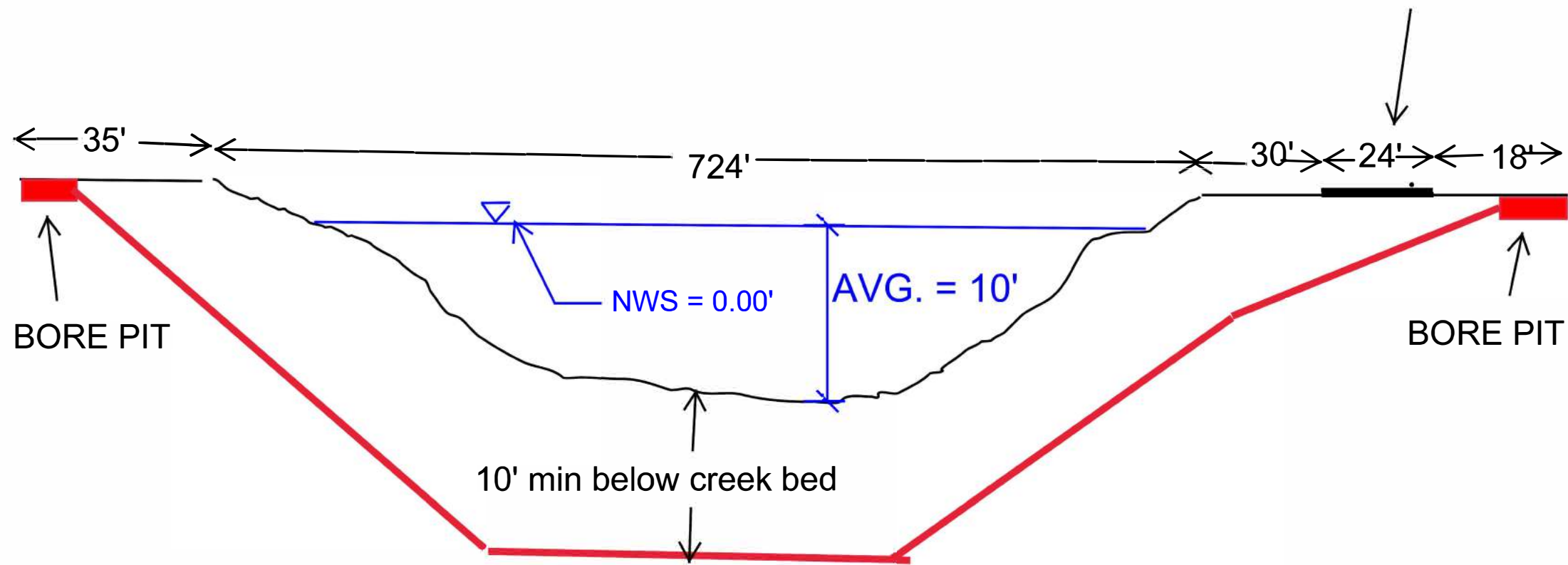


TIDELAND UNDERGROUND BORE DETAIL

**BRIGHTSPEED  
UNDERGROUND  
BORE DETAIL**

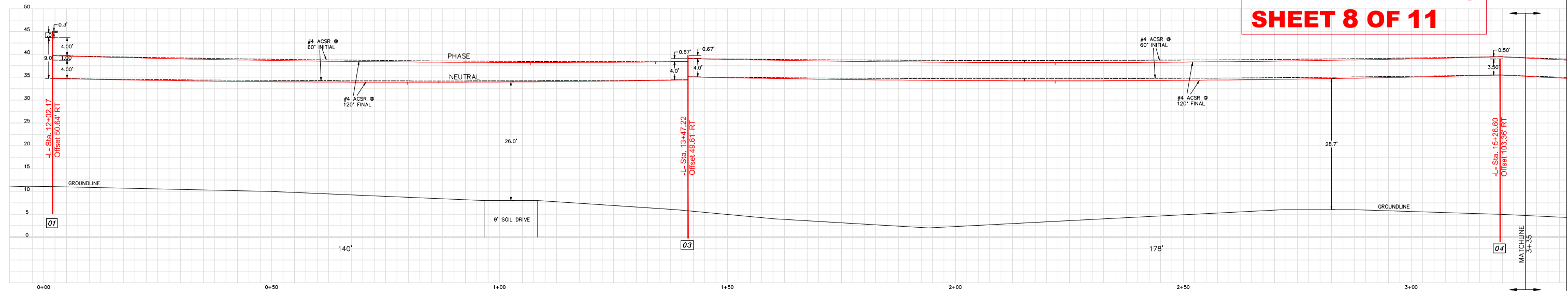


-Y1-  
SR 1112  
Mouth of the  
Creek Road)  
ROAD SURFACE

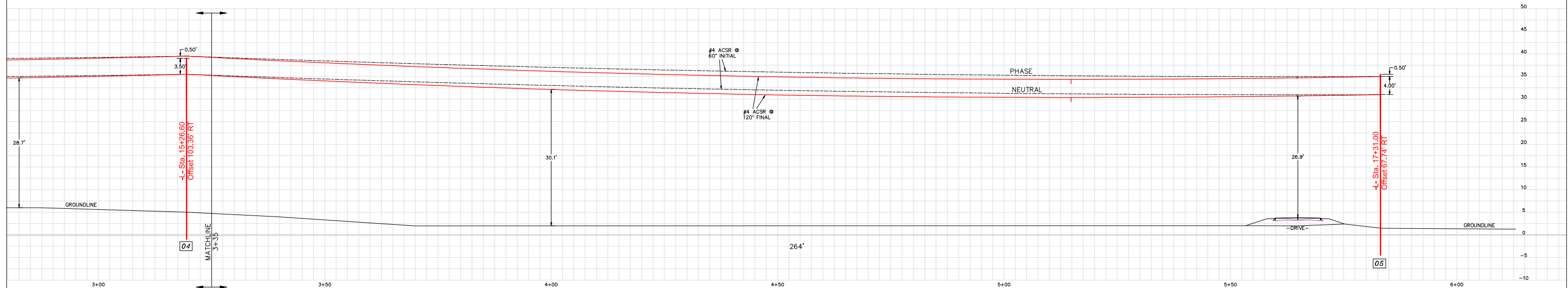


**BORE DETAIL  
B-5614 BLOUNTS CREEK, NC**

**PERMIT DRAWING  
SHEET 8 OF 11**



PROFILE A-A



PROFILE A-A

NOTES:

1. ALL POLES UNLESS OTHERWISE NOTED ARE 40', CLASS 4, 6' EMBEDMENT.
2. SAG CURVES ARE FOR TYPICAL DESIGN TENSIONS FOR CONDUCTORS SHOWN. ACTUAL STRINGING TENSIONS MAY CAUSE MINOR DIFFERENCES.
3. GROUND CONTOURS ARE FROM NCDOT PROJECT B-5614 DRAWING SET AND BEAUFORT COUNTY GIS DATA.

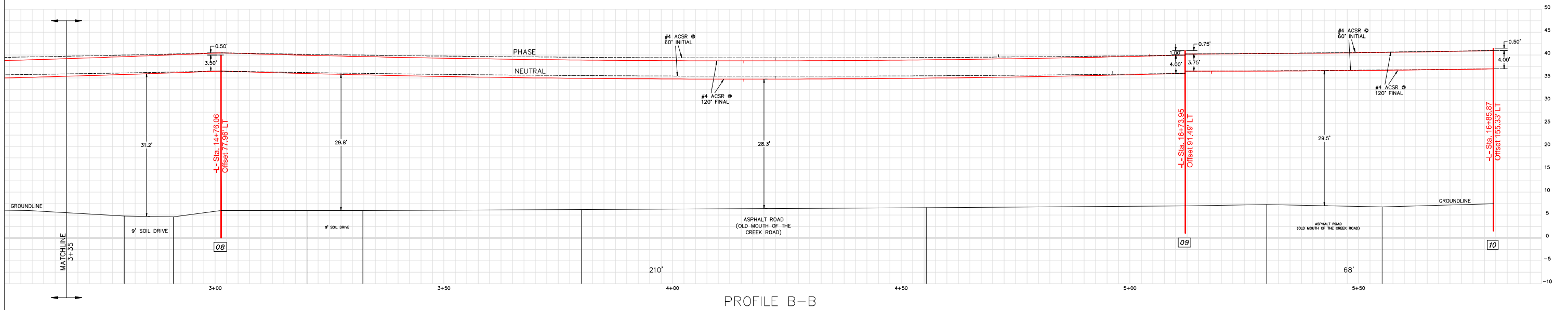
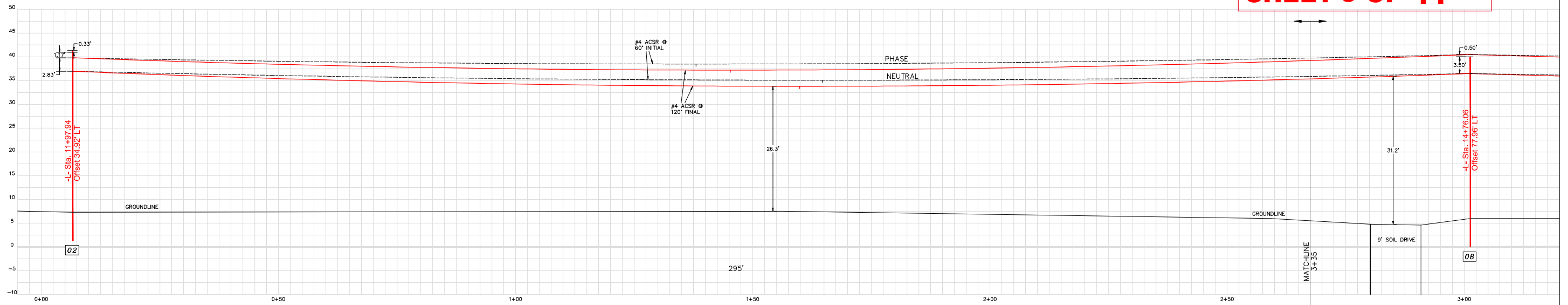
**PRELIMINARY**



155 U.S. HWY. 70 WEST  
N.C. CORP. C-1063  
**Utility Electrical Consultants PC**  
GARNER, NORTH CAROLINA  
PH (919) 821-1410

TIDELAND ELECTRIC MEMBERSHIP CORP. PANTEGO, NORTH CAROLINA			
MOUTH OF THE CREEK ROAD PLAN VIEW			
DRAWN BY: ABB	JOB NO.: 22-2162	SCALE: 1" = 10'	
CHECKED BY: TBP	CAD FILE: BLOUNTS CREEK XP	APPROVED BY: TBP	
DATE: 03/03/2022	SHEET NO. 2 OF 4		

**PERMIT DRAWING  
SHEET 9 OF 11**



NOTES:

1. ALL POLES UNLESS OTHERWISE NOTED ARE 40', CLASS 4, 6' EMBEDMENT.
2. SAG CURVES ARE FOR TYPICAL DESIGN TENSIONS FOR CONDUCTORS SHOWN. ACTUAL STRINGING TENSIONS MAY CAUSE MINOR DIFFERENCES.
3. GROUND CONTOURS ARE FROM NCDOT PROJECT B-5614 DRAWING SET AND BEAUFORT COUNTY GIS DATA.

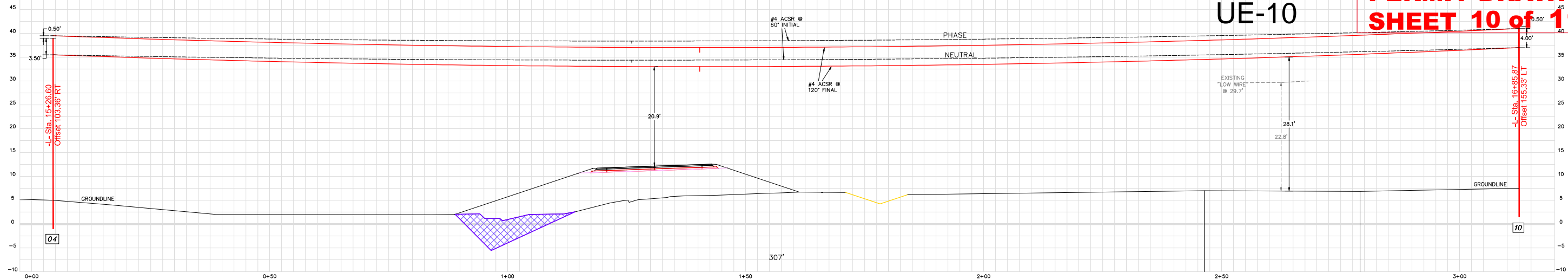
**PRELIMINARY**



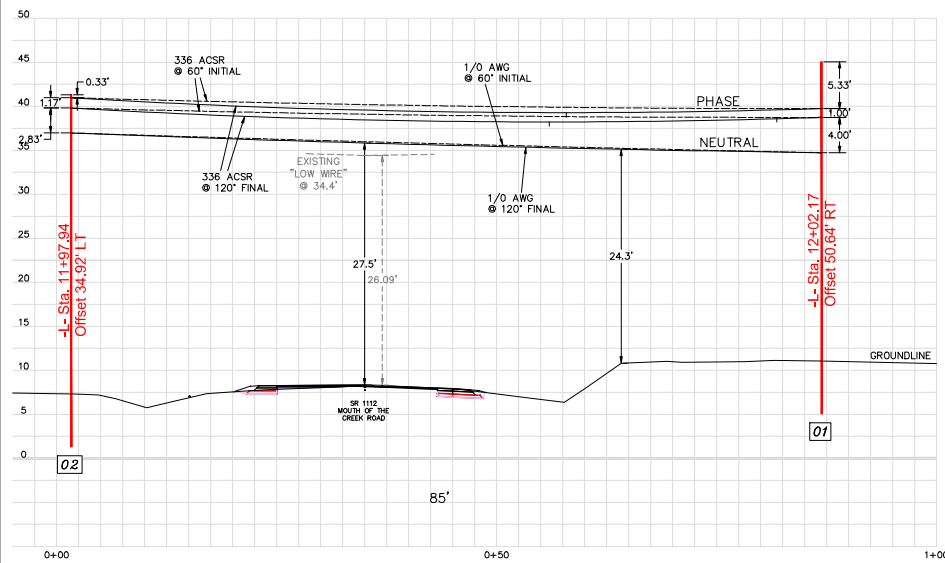
155 U.S. HWY. 70 WEST  
N.C. CORP. C-1063  
**Utility Electrical Consultants PC**  
GARNER, NORTH CAROLINA  
PH (919) 821-1410

TIDELAND ELECTRIC MEMBERSHIP CORP. PANTEGO, NORTH CAROLINA			
MOUTH OF THE CREEK ROAD PLAN VIEW			
DRAWN BY: ABB	JOB NO.: 22-2162	SCALE: 1" = 10'	
CHECKED BY: TBP	CAD FILE: BLOUNTSREEKPR	APPROVED BY: TBP	
DATE: 03/03/2022	SHEET NO. 3 OF 4		

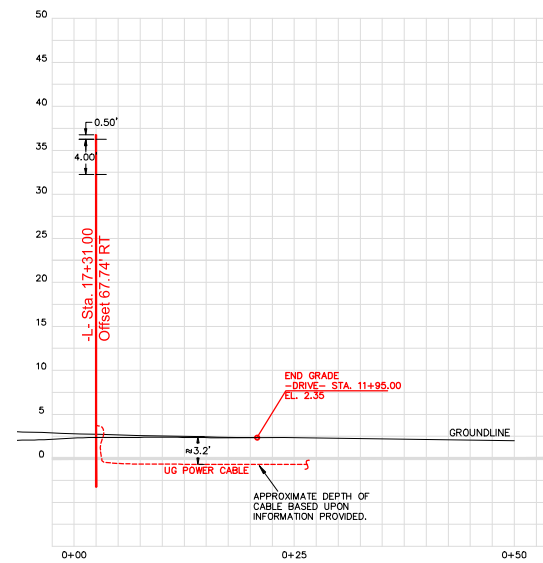
**UE-10**



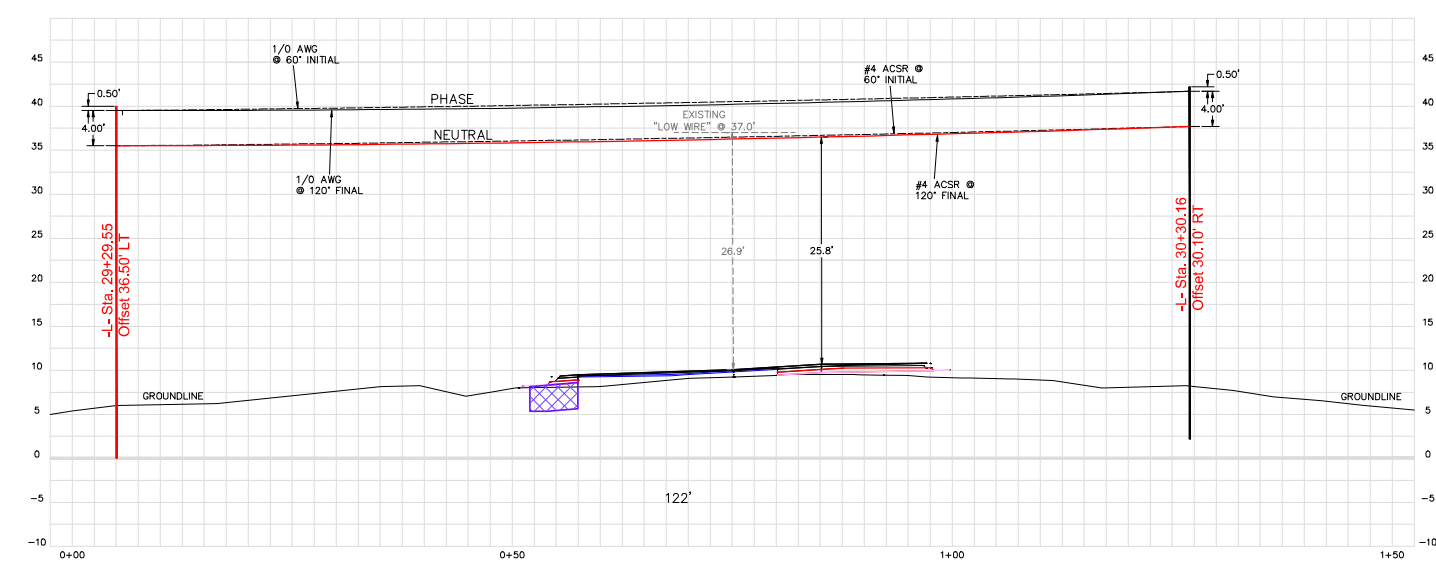
PROFILE C-C



PROFILE D-D



PROFILE E-E



PROFILE F-F

NOTES:

1. ALL POLES UNLESS OTHERWISE NOTED ARE 40', CLASS 4, 6' EMBEDMENT.
2. SAG CURVES ARE FOR TYPICAL DESIGN TENSIONS FOR CONDUCTORS SHOWN. ACTUAL STRINGING TENSIONS MAY CAUSE MINOR DIFFERENCES.
3. GROUND CONTOURS ARE FROM NCDOT PROJECT B-5614 DRAWING SET AND BEAUFORT COUNTY GIS DATA.

**PRELIMINARY**



155 U.S. HWY. 70 WEST  
N.C. CORP. C-1063  
**Utility Electrical Consultants PC**  
GARNER, NORTH CAROLINA  
PH (919) 821-1410

TIDELAND ELECTRIC MEMBERSHIP CORP. PANTEGO, NORTH CAROLINA			
MOUTH OF THE CREEK ROAD PLAN VIEW			
DRAWN BY: ABB	JOB NO.: 22-2162	SCALE: 1" = 10'	
CHECKED BY: TBP	CAD FILE: BLOUNTSREEXP	APPROVED BY: TBP	
DATE: 03/03/2022	SHEET NO. 4 OF 4		

**WETLAND AND SURFACE WATER IMPACTS SUMMARY**

Site No.	Station (From/To)	Structure Size / Type	WETLAND IMPACTS					SURFACE WATER IMPACTS				
			Permanent Fill In Wetlands (ac)	Temp. Fill In Wetlands (ac)	Excavation in Wetlands (ac)	Mechanized Clearing in Wetlands (ac)	Hand Clearing in Wetlands (ac)	Permanent SW impacts (ac)	Temp. SW impacts (ac)	Existing Channel Impacts Permanent (ft)	Existing Channel Impacts Temp. (ft)	Natural Stream Design (ft)
1	-L- 14+80 to 14+90	TEMP. OVERHEAD POWER LINES					< 0.01					
2	-L- 13+63 to 14+44	OVERHEAD POWER LINES					0.04					
2	-L- 15+30 to 17+96	OVERHEAD POWER LINES					0.11					
TOTALS*:							0.16			0	0	0

\*Rounded totals are sum of actual impacts

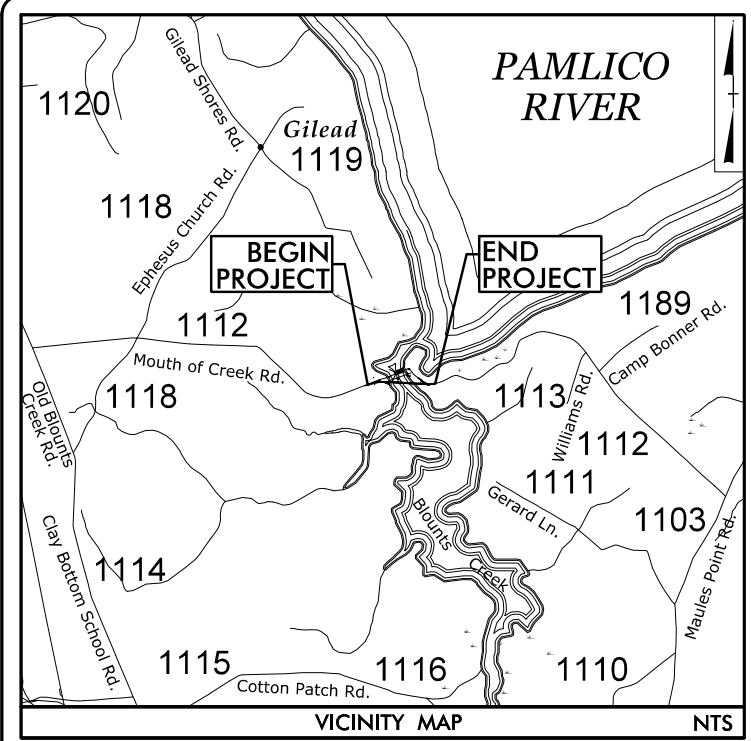
NOTES:

**Revised May 21, 2024**

NC DEPARTMENT OF TRANSPORTATION  
 DIVISION OF HIGHWAYS  
 05/21/2024  
 BEAUFORT COUNTY  
 B-5614  
 45569.1.1  
 SHEET 11 OF 11

09/28/99

**TIP PROJECT: B-5614**



STATE OF NORTH CAROLINA  
DIVISION OF HIGHWAYS

# UTILITY ENVIRONMENTAL PERMIT DRAWING

LOCATION: BRIDGE NO. 9 ON SR 1112  
OVER BLOUNTS CREEK

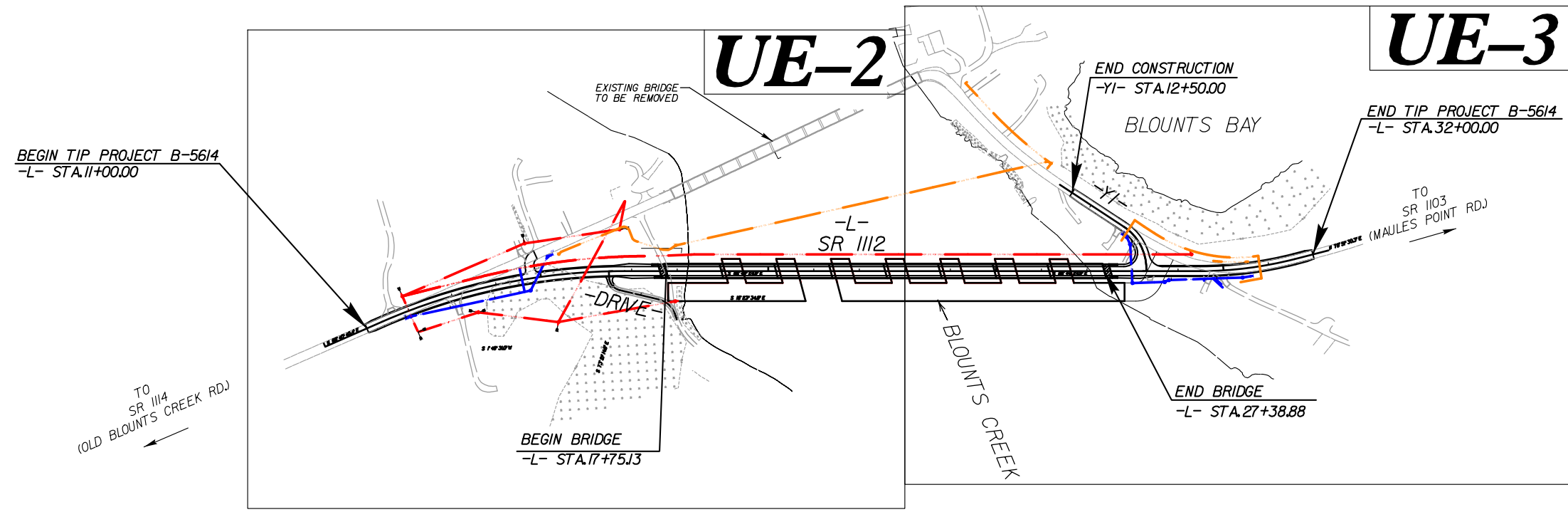
TYPE OF WORK: TELECOMMUNICATIONS, POWER RELOCATION,  
AND WATERLINE RELOCATION

**BUFFER IMPACTS PERMIT**

T.I.P. NO.	SHEET NO.
B-5614	UE-1

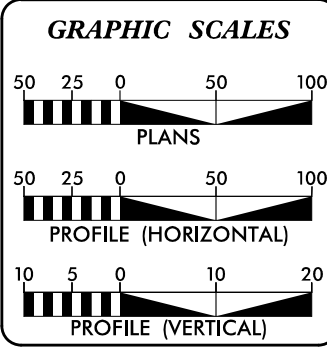
PRELIMINARY PLANS  
DO NOT USE FOR CONSTRUCTION

**BUFFER DRAWING  
SHEET 1 OF 5**



**INCOMPLETE PLANS  
DO NOT USE FOR R/W ACQUISITION  
DOCUMENT NOT CONSIDERED FINAL  
UNLESS ALL SIGNATURES COMPLETED**

**CONTRACT:**



SHEET NO.	DESCRIPTION
UE-1	BUFFER IMPACT TITLE SHEET
UE-2	UTILITY BUFFER IMPACTS
UE-3	UTILITY BUFFER IMPACTS

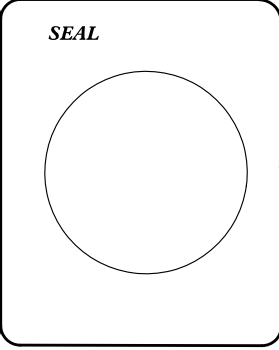
UTILITY OWNERS ON PROJECT
(A) LUMEN (CENTURY LINK) - TELECOMMUNICATIONS
(B) TIDELAND EMC - POWER
WATER AND SEWER OWNERS ON PROJECT
(A) WATER - BEAUFORT COUNTY

Prepared in the Offices of:

223 S. WEST ST. STE. 1100  
RALEIGH, NC 27602  
T 919.380.8750

VHB Engineering NC, P.C. (C-3705)  
940 Main Campus Drive, Suite 500  
Raleigh, NC 27606

MICHAEL BURNS, PE	PROJECT ENGINEER
JOSHUA ROEMER	PROJECT DESIGN ENGINEER



DIVISION OF HIGHWAYS UTILITIES UNIT 155 MAIL SERVICES CENTER RALEIGH NC 27699-1555 PHONE (919) 707-6690 FAX (919) 250-4151	
NABIL HAMDAN	UTILITIES REGIONAL ENGINEER
TYRON W. STALLINGS	UTILITIES ENGINEER
TANGA SAMPSON	UTILITIES AREA COORDINATOR
TYRON W. STALLINGS	UTILITIES COORDINATOR

I2:05:48 PM R:\Hydraulics\PERMITS\Environmental\Drawings\utility Impacts\B5614\_Hyd\_prm\_UE\_buffer\_TSH.dgn toulpepper

UTILITIES BY OTHERS/UTILITY CONSTRUCTION

NOTE:  
 ALL PROPOSED UTILITY WORK SHOWN ON THIS SHEET WILL BE DONE BY OTHERS



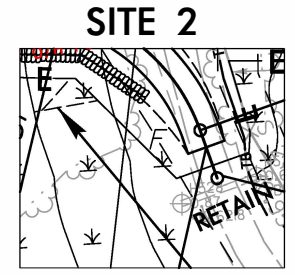
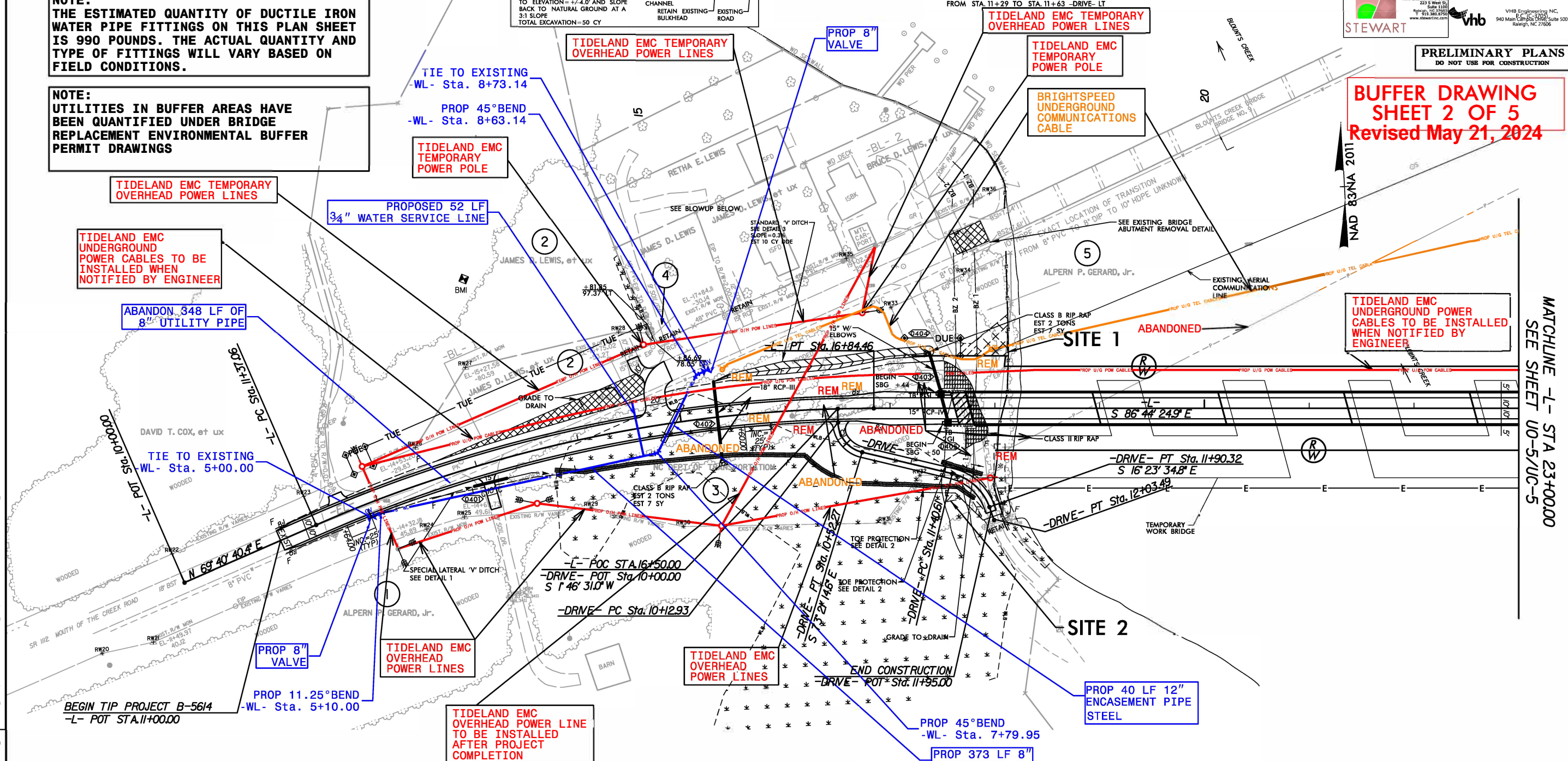
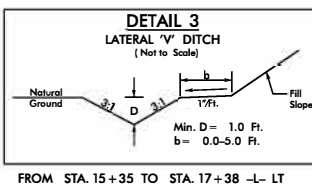
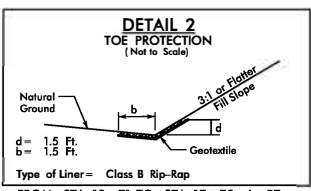
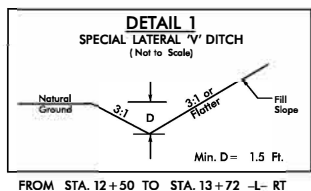
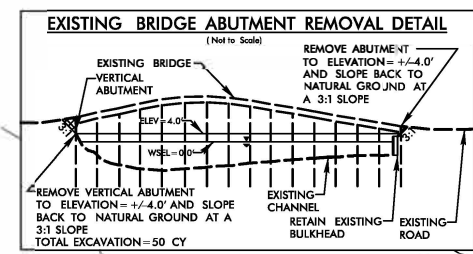
PRELIMINARY PLANS  
 DO NOT USE FOR CONSTRUCTION

**BUFFER DRAWING**  
 SHEET 2 OF 5  
 Revised May 21, 2024

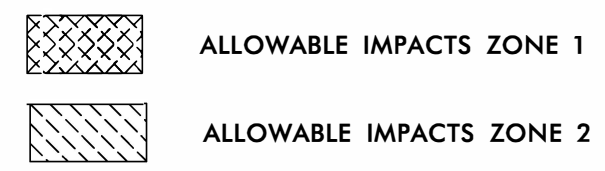
NOTE:  
 CONTRACTOR IS REQUIRED TO ENSURE ALL BENDS UTILIZE JOINT RESTRAINTS.

NOTE:  
 THE ESTIMATED QUANTITY OF DUCTILE IRON WATER PIPE FITTINGS ON THIS PLAN SHEET IS 990 POUNDS. THE ACTUAL QUANTITY AND TYPE OF FITTINGS WILL VARY BASED ON FIELD CONDITIONS.

NOTE:  
 UTILITIES IN BUFFER AREAS HAVE BEEN QUANTIFIED UNDER BRIDGE REPLACEMENT ENVIRONMENTAL BUFFER PERMIT DRAWINGS



TIDELAND EMC HAS CONFIRMED THEY WILL OBTAIN THEIR OWN EASEMENT FOR RELOCATIONS SHOWN OUTSIDE EXISTING ROW AND PROPOSED PUE



REVISIONS  
 5/14/24  
 R:\Projects\B-5614\_Hydro\Drawings\Utility\Impacts\B5614\_Hydro.prm\_UE\_buffer\_PSH04.dgn  
 R:\Projects\B-5614\_Hydro\Drawings\Utility\Impacts\B5614\_Hydro.prm\_UE\_buffer\_PSH04.dgn  
 R:\Projects\B-5614\_Hydro\Drawings\Utility\Impacts\B5614\_Hydro.prm\_UE\_buffer\_PSH04.dgn  
 R:\Projects\B-5614\_Hydro\Drawings\Utility\Impacts\B5614\_Hydro.prm\_UE\_buffer\_PSH04.dgn

MATCHLINE -L- STA 23+00.00  
 SEE SHEET U0-5/UC-5



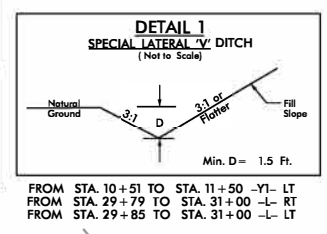
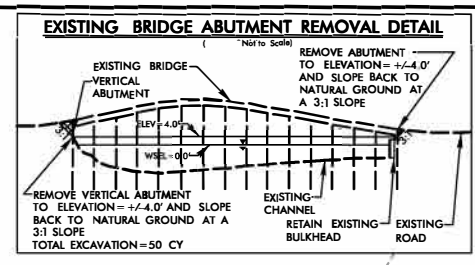
UTILITIES BY OTHERS/UTILITY CONSTRUCTION

NOTE:  
 ALL PROPOSED UTILITY WORK SHOWN ON THIS SHEET WILL BE DONE BY OTHERS

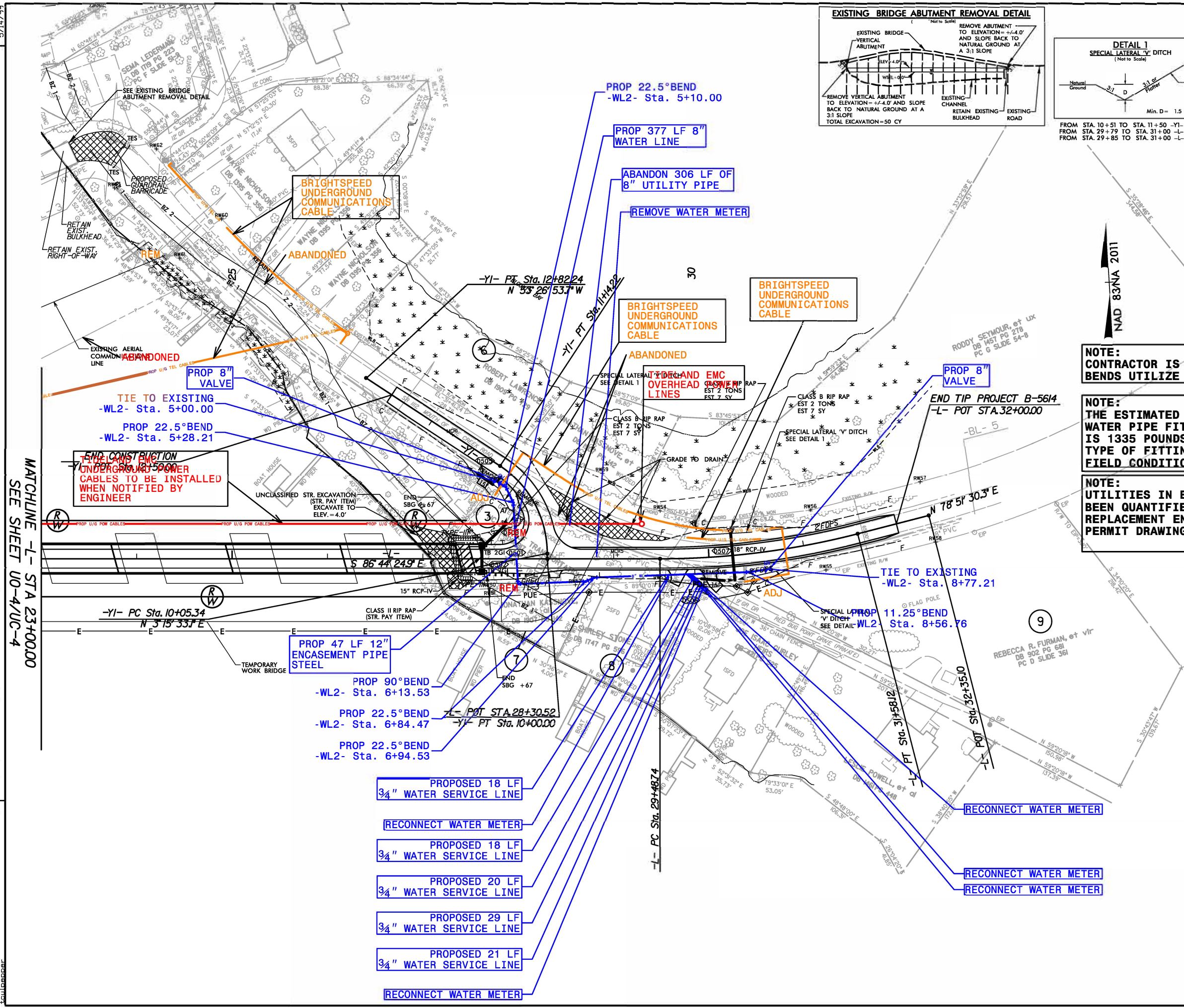


PRELIMINARY PLANS  
 DO NOT USE FOR CONSTRUCTION

**BUFFER DRAWING SHEET 3 OF 5**  
 Revised May 21, 2024



FROM STA. 10+51 TO STA. 11+50 -Y1- LT  
 FROM STA. 29+79 TO STA. 31+00 -L- RT  
 FROM STA. 29+85 TO STA. 31+00 -L- LT



NOTE:  
 CONTRACTOR IS REQUIRED TO ENSURE ALL BENDS UTILIZE JOINT RESTRAINTS.

NOTE:  
 THE ESTIMATED QUANTITY OF DUCTILE IRON WATER PIPE FITTINGS ON THIS PLAN SHEET IS 1335 POUNDS. THE ACTUAL QUANTITY AND TYPE OF FITTINGS WILL VARY BASED ON FIELD CONDITIONS.

NOTE:  
 UTILITIES IN BUFFER AREAS HAVE BEEN QUANTIFIED UNDER BRIDGE REPLACEMENT ENVIRONMENTAL BUFFER PERMIT DRAWINGS



5/14/24  
 REVISIONS  
 MATCHLINE -L- STA 23+00.00 SEE SHEET UO-4/UC-4  
 R:\Projects\B5614\_Hyd.prm\_UE\_buffers\_PSH05.dgn  
 10:52:22 PM  
 R:\Users\mloc\PERMITS\_Environmental\Drawings\Utility\_Impacts\B5614\_Hyd.prm\_UE\_buffers\_PSH05.dgn  
 5/14/24

## RIPARIAN BUFFER IMPACTS SUMMARY

Site No.	Station (From/To)	Structure Size / Type	IMPACTS									BUFFER REPLACEMENT	
			TYPE			ALLOWABLE			MITIGABLE			ZONE 1 (ft <sup>2</sup> )	ZONE 2 (ft <sup>2</sup> )
			ROAD CROSSING	BRIDGE	PARALLEL IMPACT	ZONE 1 (ft <sup>2</sup> )	ZONE 2 (ft <sup>2</sup> )	TOTAL (ft <sup>2</sup> )	ZONE 1 (ft <sup>2</sup> )	ZONE 2 (ft <sup>2</sup> )	TOTAL (ft <sup>2</sup> )		
1	-L- 17+62/18+12	PROP U/G POW & TEL CABLE			X	834	197	1031					
2	-DRIVE- 11+36/12+04	PROP O/H POW & TEL CABLE			X	0	112	112					
<b>TOTALS*:</b>						<b>834</b>	<b>309</b>	<b>1143</b>	<b>0</b>	<b>0</b>	<b>0</b>	<b>0</b>	<b>0</b>

**Revised May 21, 2024**

NC DEPARTMENT OF TRANSPORTATION  
 DIVISION OF HIGHWAYS  
 05/21/2024  
 BEAUFORT COUNTY  
 B-5614  
 45569.1.1  
 SHEET 4 OF 5

Revised 2018 Feb

### WETLANDS IN BUFFER IMPACTS SUMMARY

SITE NO.	STATION (FROM/TO)	Structure	WETLANDS IN BUFFERS	
			ZONE 1 (ft <sup>2</sup> )	ZONE 2 (ft <sup>2</sup> )
2	-DRIVE- 11+36/12+04	PROP O/H POW & TEL CABLE	0	112
<b>TOTAL:</b>			<b>0</b>	<b>112</b>

NC DEPARTMENT OF TRANSPORTATION  
 DIVISION OF HIGHWAYS  
 05/21/2024  
 BEAUFORT COUNTY  
 B-5614  
 45569.1.1  
 SHEET **5** OF **5**