



STATE OF NORTH CAROLINA
DEPARTMENT OF TRANSPORTATION

ROY COOPER
GOVERNOR

JAMES H. TROGDON, III
SECRETARY

June 1, 2018

Kyle Barnes
NCDOT Coordinator-Division One
United States Army Corps of Engineers
2407 West Fifth Street
Washington, NC 27889-1000

Greg Daisey
NC Div. of Environmental Quality
Division of Coastal Management
401 S. Griffin St., Suite 300
Elizabeth City, NC 27909

Subject: **Revised Application for Section 404 and Section 10 Individual Permit, Section 401 Individual Water Quality Certification, and CAMA Major Development Permit Modification** for the proposed Rodanthe Breach Long-Term Improvements, Bonner Bridge Replacement Project Phase IIB in Dare County, North Carolina; TIP Project B-2500B, Federal Aid Project No. BRNHF-0012(56); WBS Element 32635.3.9

Reference: B-2500 II B Application dated January 22, 2018
B-2500 II B Revised Application dated February 16, 2018

Dear Sirs,

On February 16, 2018, the North Carolina Department of Transportation (NCDOT) submitted the revised application for the subject project. As project material delivery logistics continue to progress, it has been determined that the temporary detour of NC 12, necessary to construct the northern bridge touchdown with the current NC 12, needs to be shifted which results in the adjustment of the previously defined temporary easements.

This adjustment does not result in any changes to proposed jurisdictional impacts.

This adjustment occurs on both sides (east and west) of the northern bridge touchdown area, and is necessary for the following reasons:

The original easement placed NC 12 traffic only 5 feet from the edge of construction of the approaches. This shift will increase the distance between construction operations and NC 12 traffic. This will allow for the separation of construction traffic, and NC 12 traffic, thus reducing NC 12 interruptions and conflicts to the traveling public. It also allows for additional room for the installation and maintenance of erosion control devices.

Please see attached revised roadway plans. There are no changes to the permit drawings. Mapping displaying the "first line of stable vegetation" is also included in this revision.

If you have any questions or need additional information, please contact Michael Turchy at 919-707-6157 or maturchy@ncdot.gov. A copy of this revised application will also be posted at <https://xfer.services.ncdot.gov/pdea/PermApps/>.

Sincerely,



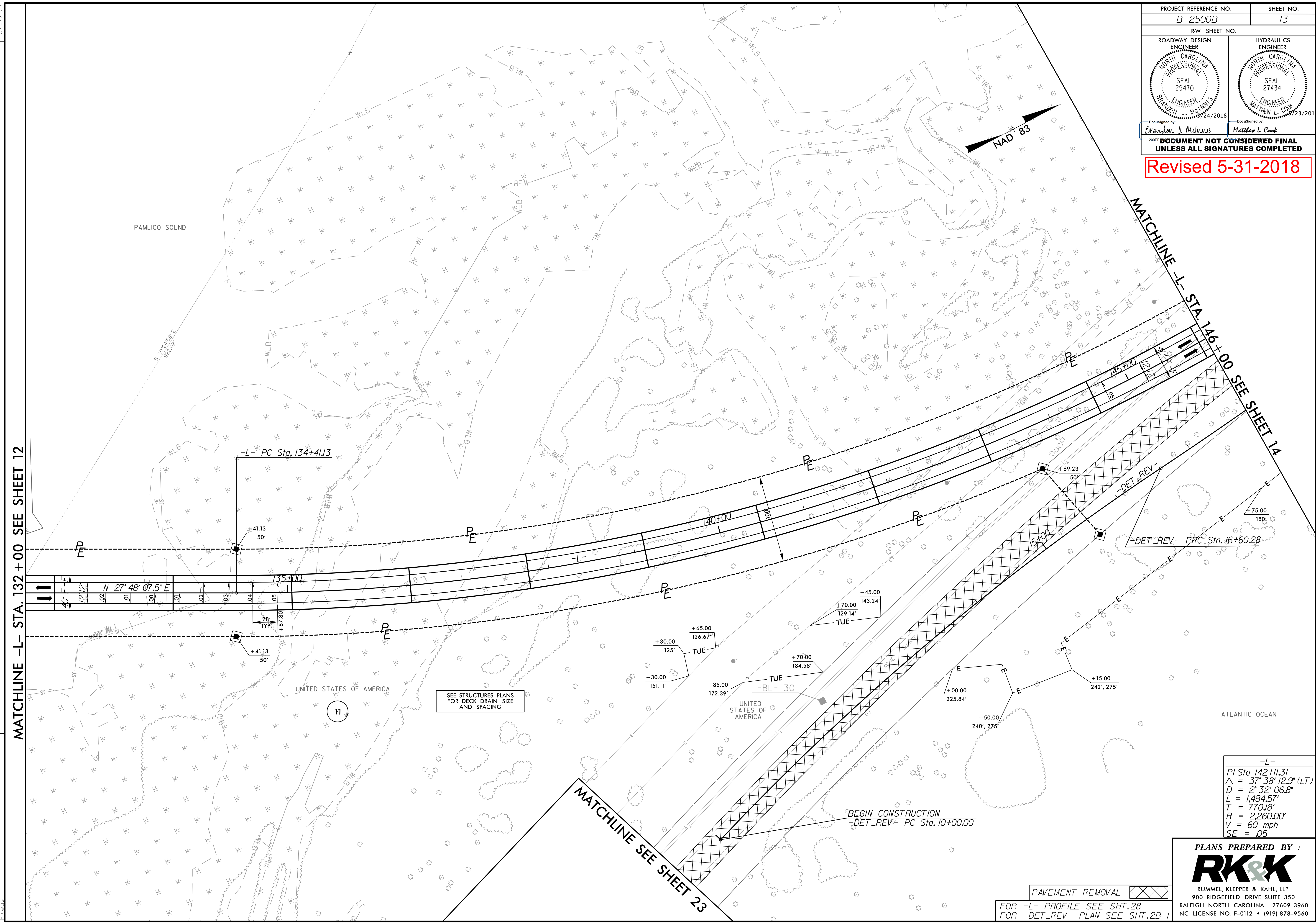
for Philip S. Harris III, P.E., C.P.M., Unit Head
Environmental Analysis Unit

cc: NCDOT Permit Application Standard Distribution List
Pablo A. Hernandez, P.E., Resident Engineer
David Hering, Design Build Unit

PROJECT REFERENCE NO. B-2500B	SHEET NO. 13
RW SHEET NO.	
ROADWAY DESIGN ENGINEER NORTH CAROLINA PROFESSIONAL SEAL 29470 BRANDON J. McINNIS 09/24/2018	HYDRAULICS ENGINEER NORTH CAROLINA PROFESSIONAL SEAL 21434 MATTHEW L. COOK 07/23/2018
DocuSigned by: Brandon J. McInnis	
DocuSigned by: Matthew L. Cook	
DOCUMENT NOT CONSIDERED FINAL UNLESS ALL SIGNATURES COMPLETED	

Revised 5-31-2018

REVISIONS
CONSTRUCTION REVISION: DATE: 5/23/2018 - REVISED TEMPORARY ON-SITE DETOUR, TEMPORARY EASEMENT, AND MATCH LINES.



MATCHLINE -L- STA. 132+00 SEE SHEET 12

MATCHLINE -L- STA. 146+00 SEE SHEET 14

MATCHLINE SEE SHEET 23

PAMLICO SOUND

ATLANTIC OCEAN

UNITED STATES OF AMERICA

UNITED STATES OF AMERICA

SEE STRUCTURES PLANS FOR DECK DRAIN SIZE AND SPACING

BEGIN CONSTRUCTION
-DET_REV- PC Sta. 10+00.00

-L-
 PI Sta 142+11.31
 $\Delta = 37^\circ 38' 12.9" (LT)$
 $D = 2^\circ 32' 06.8"$
 $L = 1,484.57'$
 $T = 770.18'$
 $R = 2,260.00'$
 $V = 60 \text{ mph}$
 $SE = .05$

PAVEMENT REMOVAL

FOR -L- PROFILE SEE SHT.28
FOR -DET_REV- PLAN SEE SHT.2B-1

PLANS PREPARED BY :

RK&K

RUMMEL, KLEPPER & KAHL, LLP
 900 RIDGEFIELD DRIVE SUITE 350
 RALEIGH, NORTH CAROLINA 27609-3960
 NC LICENSE NO. F-0112 • (919) 878-9560

5/23/2018
R:\Roadway\Proj\B2500B_Rdy_psh13.dgn
E:\Users\brm\Documents\B2500B_Rdy_psh13.dgn

8/17/99

PROJECT REFERENCE NO. B-2500B	SHEET NO. 14
RW SHEET NO.	
ROADWAY DESIGN ENGINEER NORTH CAROLINA PROFESSIONAL SEAL 29470 BRANDON J. McINNIS	HYDRAULICS ENGINEER NORTH CAROLINA PROFESSIONAL SEAL 27434 MATTHEW L. COOK
DocuSigned by: Brandon J. McInnis	DocuSigned by: Matthew L. Cook

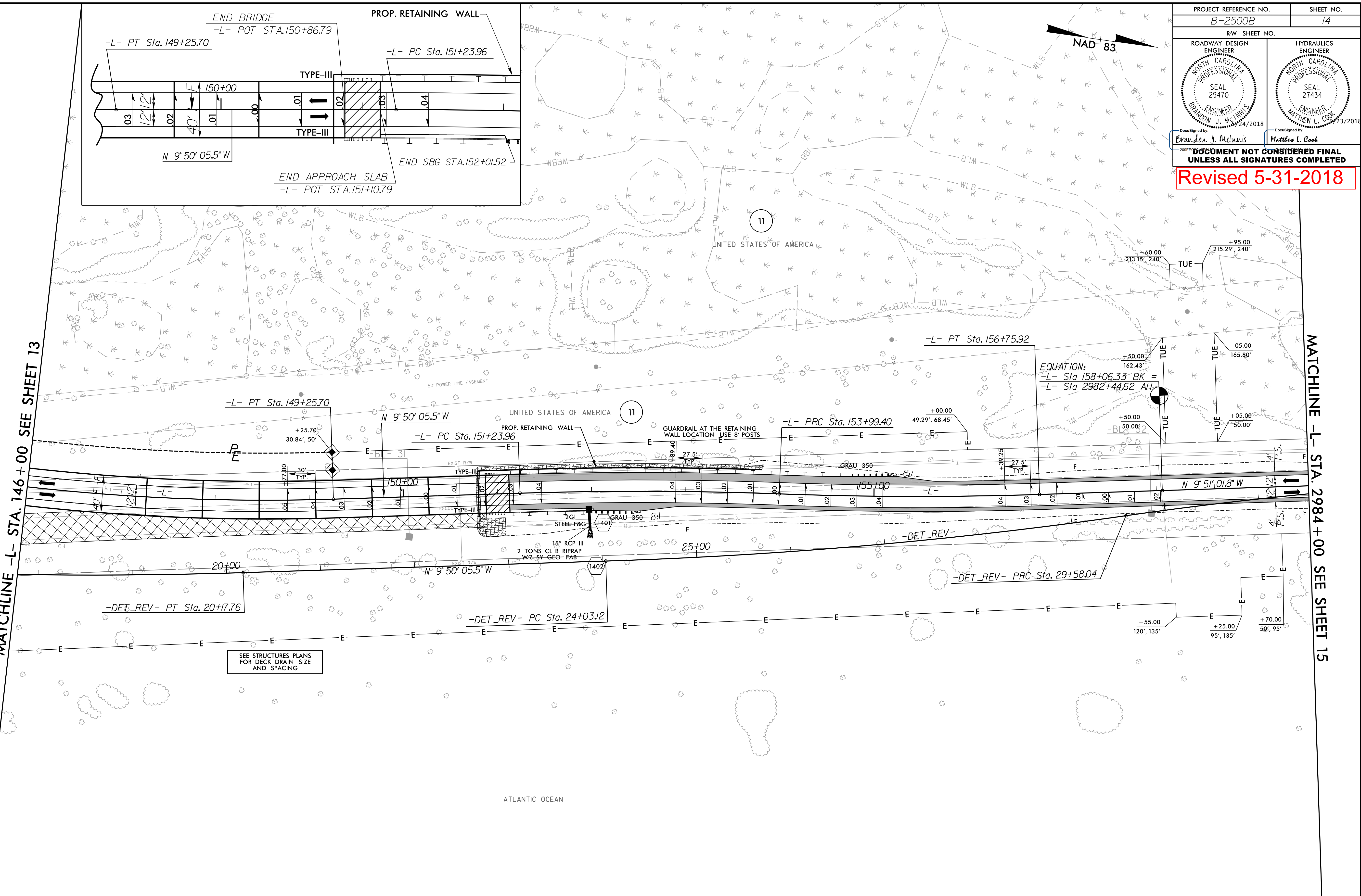
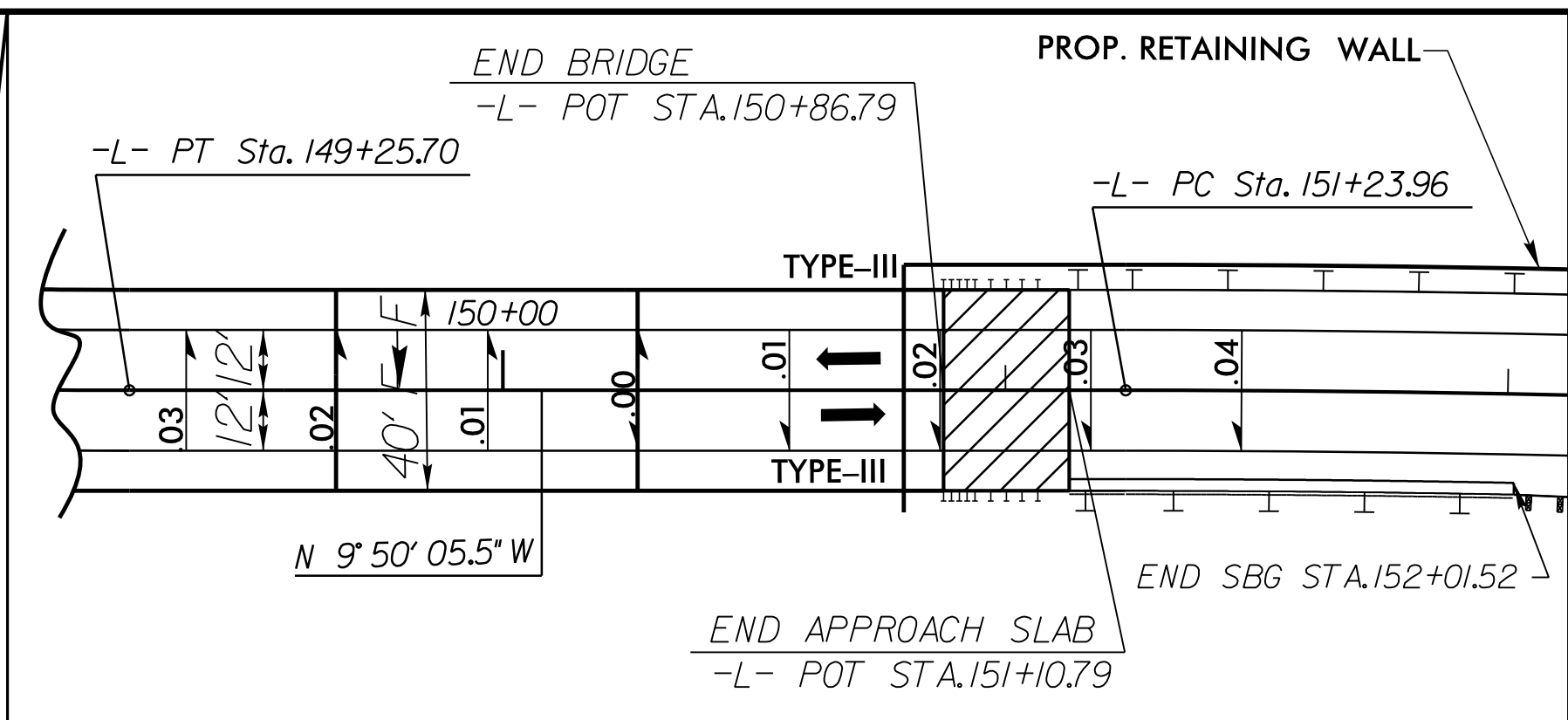
DOCUMENT NOT CONSIDERED FINAL
UNLESS ALL SIGNATURES COMPLETED

Revised 5-31-2018

REVISIONS
CONSTRUCTION REVISION: DATE: 5/23/2018 - REVISED TEMPORARY ON-SITE DETOUR AND TEMPORARY EASEMENT.

MATCHLINE -L- STA. 146 + 00 SEE SHEET 13

MATCHLINE -L- STA. 2984 + 00 SEE SHEET 15



EQUATION:
 -L- Sta 158+06.33 BK =
 -L- Sta 2982+44.62 AH

SEE STRUCTURES PLANS
FOR DECK DRAIN SIZE
AND SPACING

-L-		
PI Sta 142+11.31	PI Sta 152+61.73	PI Sta 155+37.72
$\Delta = 37^{\circ} 38' 12.9''$ (LT)	$\Delta = 3^{\circ} 56' 43.1''$ (RT)	$\Delta = 3^{\circ} 57' 39.5''$ (LT)
D = 2' 32' 06.8"	D = 1' 25' 56.6"	D = 1' 25' 56.6"
L = 1,484.57'	L = 275.43'	L = 276.53'
T = 770.18'	T = 137.77'	T = 138.32'
R = 2,260.00'	R = 4,000.00'	R = 4,000.00'
V = 60 mph	V = 60 mph	V = 60 mph
SE = .05	SE = .04	SE = .04

PAVEMENT REMOVAL

FOR -L- PROFILE SEE SHT. 29
FOR -DET_REV- PLAN SEE SHTS. 2B-1 & 2B-2

PLANS PREPARED BY :

RK&K

RUMMEL, KLEPPER & KAHL, LLP
 900 RIDGEFIELD DRIVE SUITE 350
 RALEIGH, NORTH CAROLINA 27609-3960
 NC LICENSE NO. F-0112 • (919) 878-9560

5/23/2018
R:\Roadway\Pro\B2500B_Rdy_psh14.dgn
E:\Users\brj\Documents\B2500B_Rdy_psh14.dgn

PROJECT REFERENCE NO. B-2500B	SHEET NO. 23
RW SHEET NO.	
ROADWAY DESIGN ENGINEER NORTH CAROLINA PROFESSIONAL SEAL 29470 BRANDON J. McINNIS 05/24/2018	HYDRAULICS ENGINEER NORTH CAROLINA PROFESSIONAL SEAL 27434 MATTHEW L. COOK 05/23/2018
<small>DocuSigned by:</small> Brandon J. McInnis <small>DocuSigned by:</small> Matthew L. Cook DOCUMENT NOT CONSIDERED FINAL UNLESS ALL SIGNATURES COMPLETED	

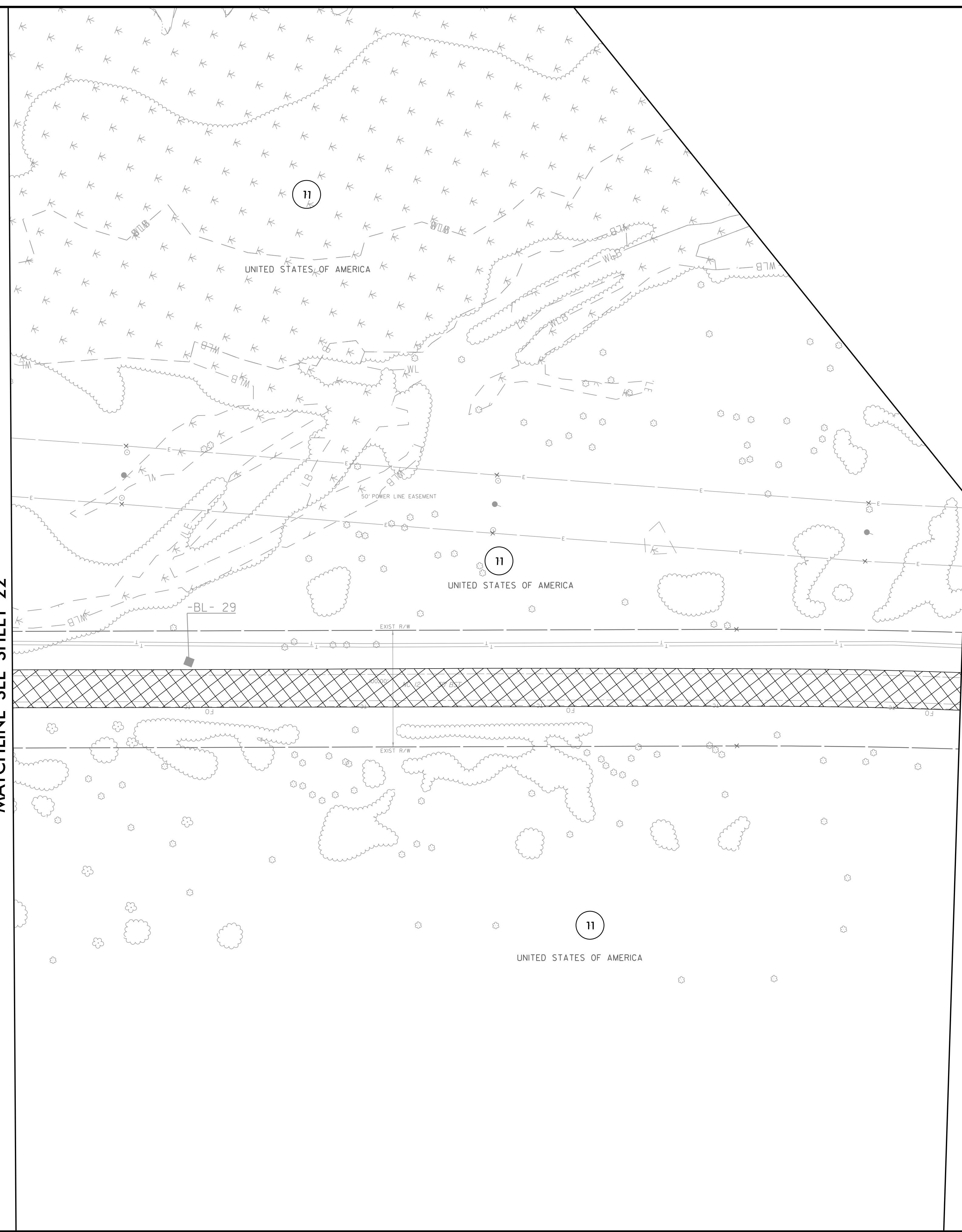


REVISIONS
 CONSTRUCTION REVISION: DATE: 5/23/2018 - REVISED MATCH LINE.

8/17/99
 E:\2018\Projects\B2500B_Rdy_psh23.dgn

MATCHLINE SEE SHEET 22

MATCHLINE SEE SHEET 13



Revised 5-31-2018

PAVEMENT REMOVAL

PLANS PREPARED BY :

RK&K

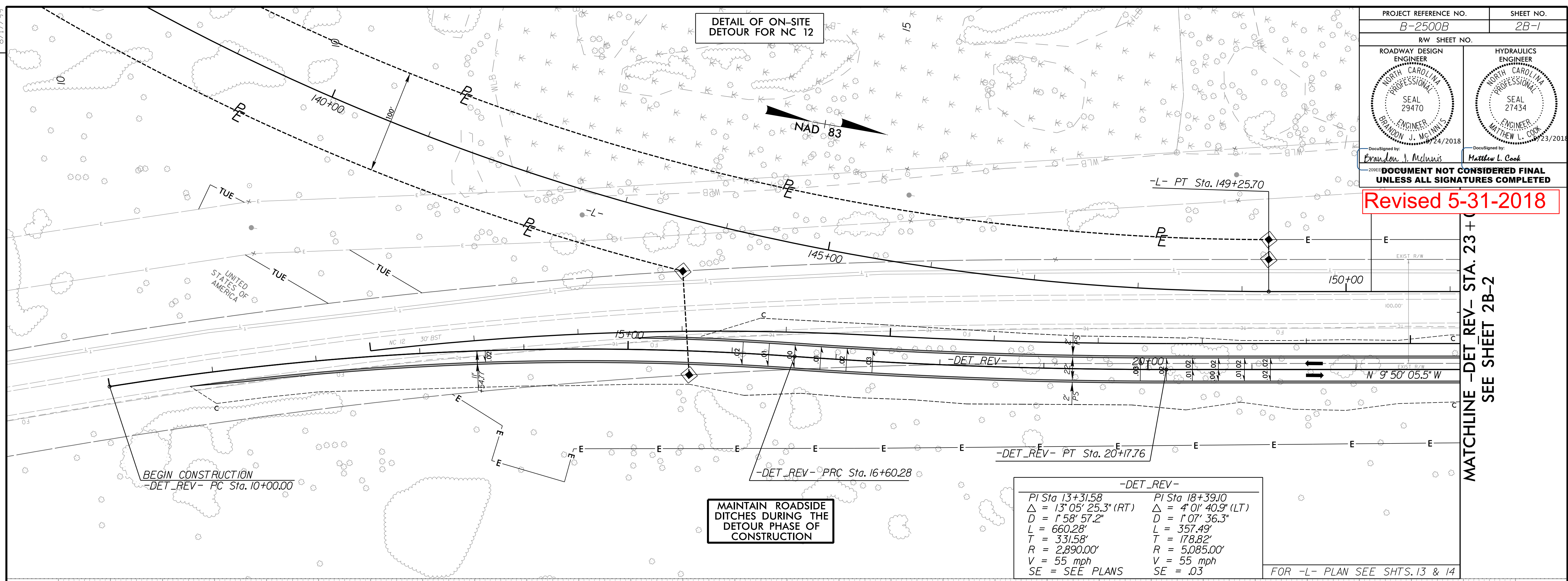
RUMMEL, KLEPPER & KAHL, LLP
 900 RIDGEFIELD DRIVE SUITE 350
 RALEIGH, NORTH CAROLINA 27609-3960
 NC LICENSE NO. F-0112 • (919) 878-9560

PROJECT REFERENCE NO. B-2500B	SHEET NO. 2B-1
RW SHEET NO.	
ROADWAY DESIGN ENGINEER NORTH CAROLINA PROFESSIONAL SEAL 29470 BRANDON J. McINNIS 24/2018	HYDRAULICS ENGINEER NORTH CAROLINA PROFESSIONAL SEAL 27434 MATTHEW L. COOK 23/2018
DocuSigned by: Brandon J. McInnis	
DocuSigned by: Matthew L. Cook	

**DOCUMENT NOT CONSIDERED FINAL
UNLESS ALL SIGNATURES COMPLETED**

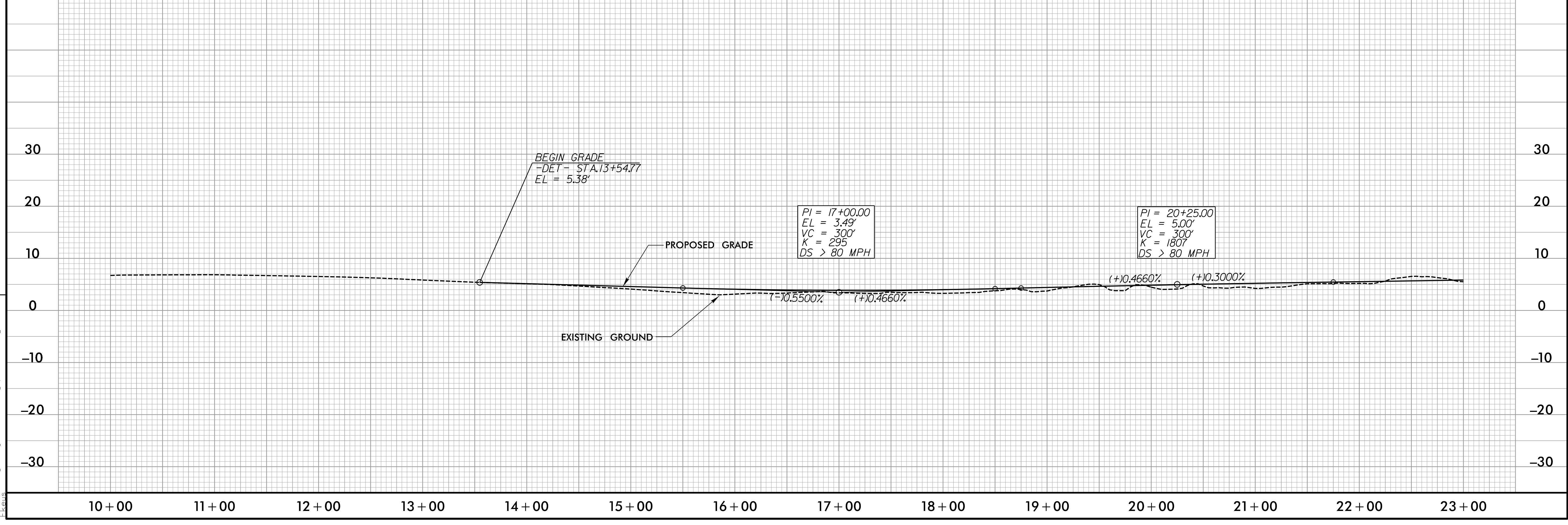
Revised 5-31-2018

REVISIONS
CONSTRUCTION REVISION: DATE: 5/23/2018 - REVISED TEMPORARY ON-SITE DETOUR, TEMPORARY EASEMENT, AND MATCH LINES.



-DET_REV-	
PI Sta 13+31.58	PI Sta 18+39.10
$\Delta = 13^{\circ} 05' 25.3\" (RT)$	$\Delta = 4^{\circ} 01' 40.9\" (LT)$
$D = 1^{\circ} 58' 57.2\"$	$D = 1^{\circ} 07' 36.3\"$
$L = 660.28'$	$L = 357.49'$
$T = 331.58'$	$T = 178.82'$
$R = 2,890.00'$	$R = 5,085.00'$
$V = 55 \text{ mph}$	$V = 55 \text{ mph}$
$SE = \text{SEE PLANS}$	$SE = .03$

FOR -L- PLAN SEE SHTS. 13 & 14



5/23/2018
C:\Users\p\OneDrive\Proo\B25000B_Rdy_psh02B_1.dgn

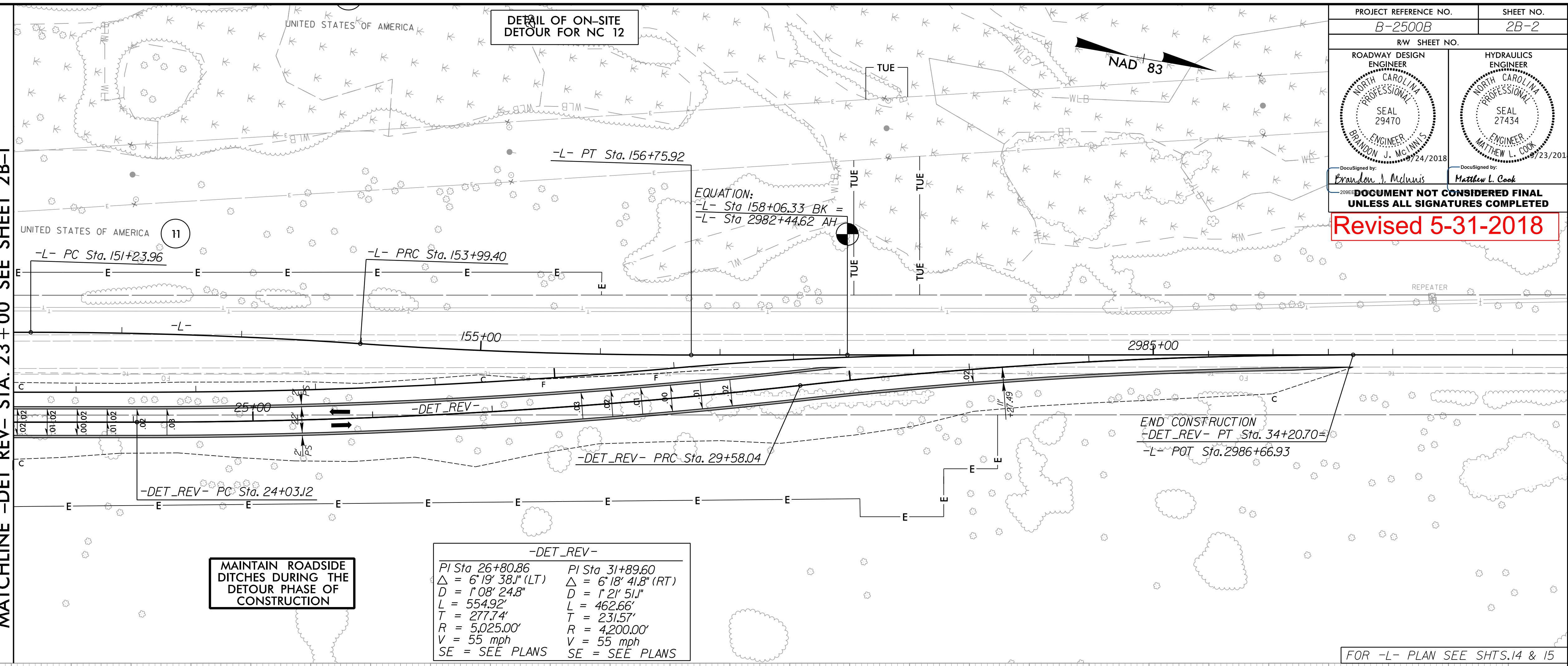
8/17/99

REVISIONS
CONSTRUCTION REVISION DATE: 5/23/2018 - REVISED TEMPORARY ON-SITE DETOUR, TEMPORARY EASEMENT, AND MATCH LINES.

5/23/2018
R:\Projects\B2500B_Bdy_psh02B_2.dgn
E:\Users\...

MATCHLINE -DET REV- STA. 23+00 SEE SHEET 2B-1

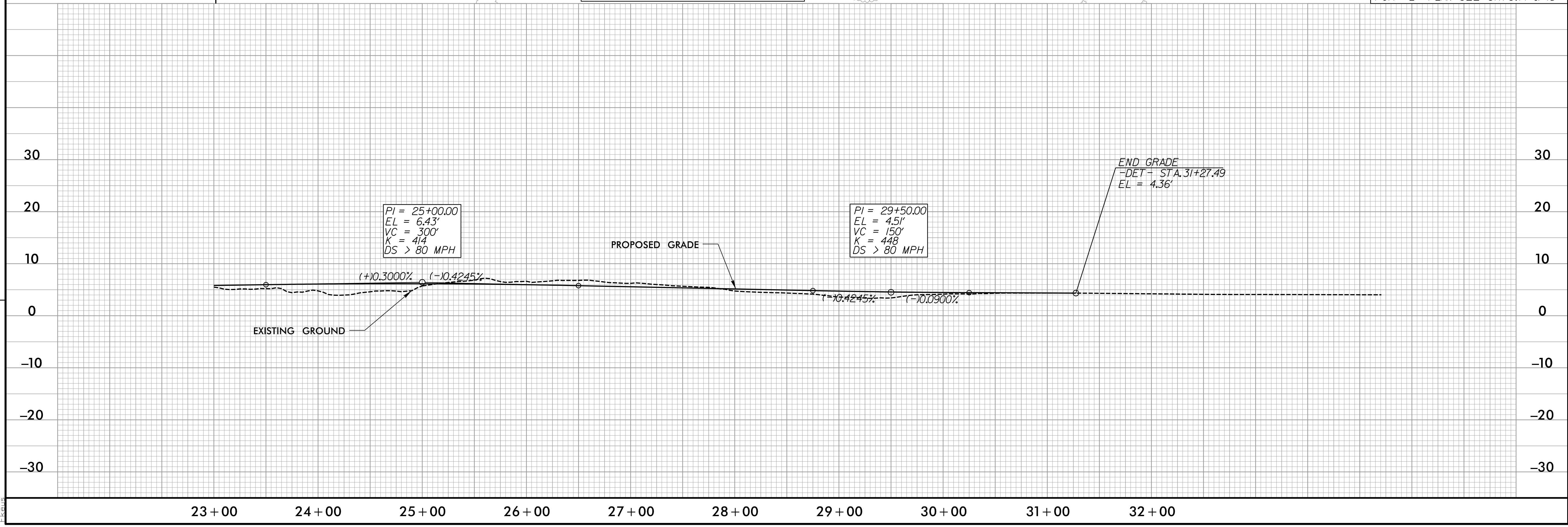
DETAIL OF ON-SITE
DETOUR FOR NC 12



-DET_REV-	
PI Sta 26+80.86	PI Sta 31+89.60
$\Delta = 6^{\circ}19'38.1''$ (LT)	$\Delta = 6^{\circ}18'41.8''$ (RT)
D = 1'08" 24.8"	D = 1'21" 51.1"
L = 554.92'	L = 462.66'
T = 277.74'	T = 231.57'
R = 5,025.00'	R = 4,200.00'
V = 55 mph	V = 55 mph
SE = SEE PLANS	SE = SEE PLANS

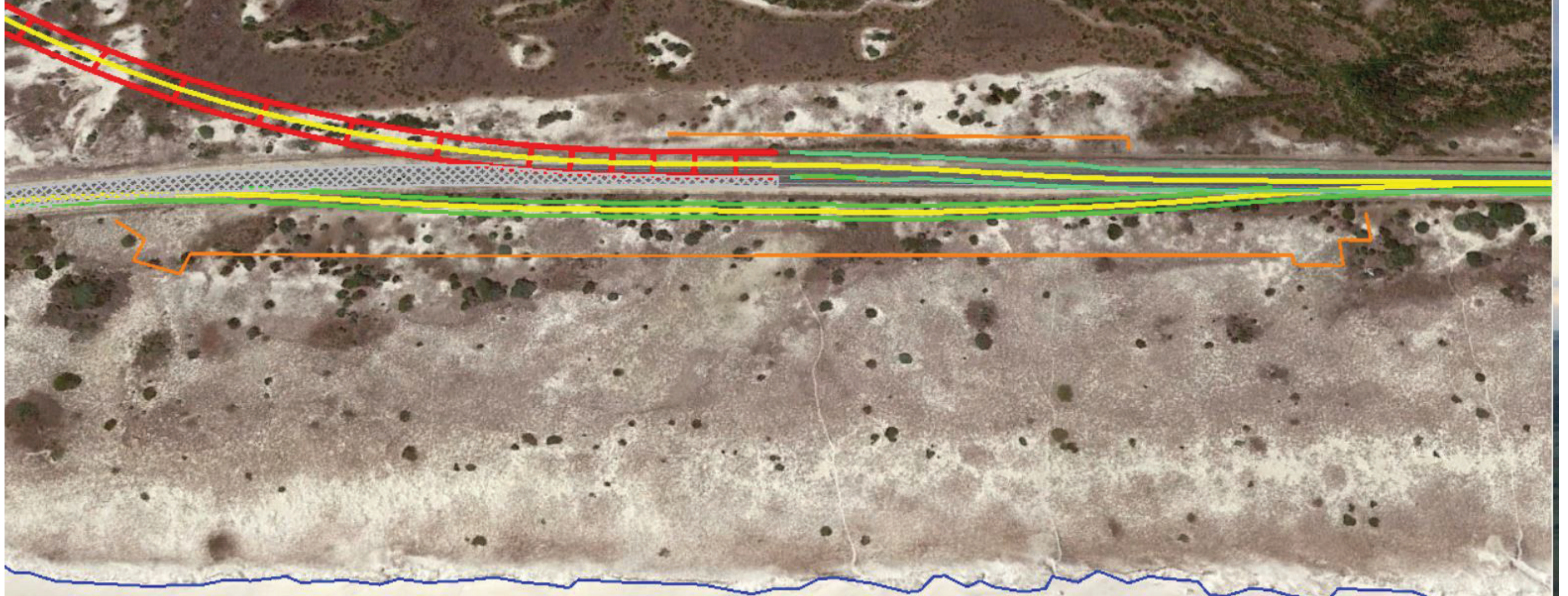
PROJECT REFERENCE NO. B-2500B	SHEET NO. 2B-2
RW SHEET NO.	
ROADWAY DESIGN ENGINEER NORTH CAROLINA PROFESSIONAL SEAL 29470 BRANDON J. McINNIS 5/24/2018	HYDRAULICS ENGINEER NORTH CAROLINA PROFESSIONAL SEAL 27434 MATTHEW L. COOK 5/23/2018
DocuSigned by: Brandon J. McInnis	
DocuSigned by: Matthew L. Cook	
2018 DOCUMENT NOT CONSIDERED FINAL UNLESS ALL SIGNATURES COMPLETED	
Revised 5-31-2018	

FOR -L- PLAN SEE SHTS. 14 & 15



TIP: B-2500 II B

Northern Detour Alignment in relationship to First Line of Stable Vegetation



Legend 

-  First Line of Stable Vegetation
-  Bridge
-  Roadway Alignment
-  Temporary Detour
-  Temporary Easement