



STATE OF NORTH CAROLINA
DEPARTMENT OF TRANSPORTATION

BEVERLY EAVES PERDUE
GOVERNOR

EUGENE A. CONTI, JR.
SECRETARY

September 12, 2011

Mr. Ronnie Smith
U.S. Army Corps of Engineers
Wilmington Field Office
P.O. Box 1890
Wilmington, NC 28402-1890

Subject: Permit Modification Request for the Section 404 Individual Permit, Section 401 Individual Water Quality Certification and CAMA Consistency Certification for the proposed improvements US 17 (Western Parkway) from SR 1403 (Country Club Road) to Western Boulevard in Onslow County. Federal Aid. No. STP-NHF-17(63), TIP No. U-4007B, Debit \$570 from WBS 35008.1.1

Reference: Original Permit Application requested May 11, 2010
Section 404 Individual Permit issued September 1, 2010; USACE Permit No. SAW- 2001-00919
Section 401 Water Quality Certification issued August 26, 2010; NCDWQ Project No. 20100362

Dear Sir:

Please see the enclosed revised permit drawings and roadway plans, for the above referenced project. Permanent fill for riparian wetland impacts has been reduced by 0.10 acre. This was accomplished by utilizing more of the existing abandoned railroad causeway. However, the presence of an additional stream and wetlands at Site 2 (service road for Ramp-IB, PC Sta. 18+94.25) on U-4007B was determined after the Jurisdictional Determination (dated September 1, 2010). As a result, excavation in riparian wetlands has increased by 0.22 acre and mechanized clearing in wetlands has increased 0.08 acre. The portion of these wetlands originally permitted for impacts was defined as non-riparian; however, upon further review the new portion delineated is considered riparian. Net riparian wetland impacts have increased by 0.20 acre, which increases total permanent impacts for U-4007B to 2.9 acres.

MAILING ADDRESS:
NC DEPARTMENT OF TRANSPORTATION
PROJECT DEVELOPMENT AND ENVIRONMENTAL ANALYSIS
1598 MAIL SERVICE CENTER
RALEIGH NC 27699-1598

TELEPHONE: 919-707-6100
FAX: 919-212-5785
WEBSITE: WWW.NCDOT.ORG

LOCATION:
1020 BIRCH RIDGE DRIVE
RALEIGH NC 27610

The debit ledger for the Clayhill Mitigation Site has been revised to provide compensatory mitigation at a ratio of 2:1 for the unavoidable wetland impacts due to U-4007B (See attached).

The additional impacts of 265 feet increase total permanent stream impacts for the entire U-4007B project to 1,564 linear feet. Compensatory mitigation for the additional 265 feet of stream impact will not be necessary, due to its low quality per Brad Shaver (USACE) and Mason Herndon (DWQ).

Section 404 Permit: NCDOT requests that the U.S. Army Corps of Engineers (USACE) review this application and issue a modification for the Individual 404 Permit issued September 1, 2010, as required for the above-described activities.

Section 401 Permit: NCDOT requests that the NCDWQ review this application and issue a modification for the Individual 401 Certification issued August 26, 2010, as required for the above-described activities. In accordance with 15A NCAC 2H .0501(a) we are providing five copies of this modification request to the North Carolina Department of Environmental and Natural Resources for their approval and \$570 to act as payment for processing the permit modification (see subject line).

CAMA: The NCDOT certifies that the proposed activity, including the modification, complies with the enforceable policies of North Carolina's approved management program and will be conducted in a manner consistent with such program. Based on these changes, NCDOT requests that NCDCM issue a revised consistency concurrence letter if necessary.

A copy of this permit modification request and its distribution list will be posted on the NCDOT website at <http://www.ncdot.org/doh/preconstruct/pe/neu/permit.html>. Thank you for your assistance with this project. If you have any questions or need additional information, please contact John S. Merritt at jsmerritt@ncdot.gov or (919) 707-6140.

Sincerely,



for

Gregory J. Thorpe, Ph.D., Manager
Project Development and Environmental Analysis Branch

cc:

NCDOT Permit Application Standard Distribution List

Compensatory Mitigation

The Clayhill Farm Mitigation Site was constructed as mitigation for TIP project R-2105 along Highway 58 in southwestern Jones County. The 355.6 acre tract is located in Jones County approximately 6 miles southeast of Maysville and is surrounded by the Croatan National Forest. This tract includes 65.4 acres of non-riverine wetland restoration and 32.3 acres of riverine wetland restoration. This site also consists of 152.1 acres of non-riverine preservation and 2.0 acres of riverine preservation. The Clayhill mitigation site has a total of 7,950 l.f. of stream credit consisting of 5,210 l.f. of perennial stream restoration, 2,200 l.f. of intermittent stream restoration, and 1,350 l.f. of perennial stream preservation. The restoration sites consist of non-riverine wet hardwood forest, mesic pine flatwoods, mesic hardwood forest and streamhead Atlantic white-cedar forest. The preservation site consists of mixed pine regeneration, mesic hardwood forest, and Coastal plain bottomland hardwood forest.

Impacts to 2.50 acres of riparian wetlands will be debited from the NCDOT's Clayhill Mitigation Site. The site is located in Jones County in HUC 03020106, adjacent to the project HUC (03030001). Since non-riparian credits are not available within HUC 03030001, it is DWQ policy to debit adjacent HUCs at a 1.5:1 ratio, but USACE required a 2:1 ratio so NCDOT will cover the impacts with a 2:1 ratio.

An additional .40 acres of impacts associated with U-4007 will also be debited from Clayhill Mitigation Site.

Site Name	River Basin	HUC	Mitigation Type	TIP Debit (ac)	TIP Debit (ac)	Mitigation Ratios	Mitigation Source
Clayhill Mitigation Site	White Oak	03020106		U-4007	U-4007 MOD		
			Riparian Wetland Restoration	2.50	.40	2:1	Clayhill Mitigation Site
			Non-Riparian Wetland Restoration	5.0		2:1	EEP

WETLAND PERMIT IMPACT SUMMARY															
Site No.	Station (From/To)	Structure Size / Type	WETLAND IMPACTS					SURFACE WATER IMPACTS							
			Permanent Fill In Wetlands (ac)	Temp. Fill In Wetlands (ac)	Excavation in Wetlands (ac)	Mechanized Clearing in Wetlands (ac)	Hand Clearing in Wetlands (ac)	Permanent SW impacts (ac)	Temp. SW impacts (ac)	Existing Channel Impacts Permanent (ft)	Existing Channel Impacts Temp. (ft)	Natural Stream Design (ft)			
1	29+25 -Y2-	2 AT 6'x7' RCBC									0.05		290		
2	23+60-26+92 -RAMP1B- LT 12+00-19+91 -SER-1	ROADWAY FILL ROADWAY FILL	0.09 0.16		0.14 0.09						0.02		265		
3	52+58-53+32 -Y1A SBL- LT 23+85-25+70 -RAMP 1A- 14+00-15+50 -LOOP 1A- 47+73-48+82 -SBL RAMP-	48" RCP 2 AT 42" RCP 2 AT 42" RCP 2 AT 42" RCP	0.02 0.14 0.30 0.24			0.01 0.02 0.03 0.02									
4	14+72-18+45 -L-	60" RCP	0.57			0.08					0.04		301		
5	12+43 -Y4- LT	ROADWAY FILL	<.01			<.01									
6	39+14-41+39 -L-	72" RCP	0.26			0.03					0.03		260		
7	57+11-62+05 -L-	42" RCP ROADWAY FILL	0.33			0.04					0.09		326		
8	69+71-70+78 -Y1A SBL- LT	DITCH EFFECT	0.16												
9	23+00-24+41 -Y4-	2 AT 36" RCP	0.09			0.02					0.01		122		
TOTALS:			2.35	0.00	0.22	0.33	0.00	0.00	0.24	0	0.24	0	1564		

REMARKS: SITE 1) THE EXISTING SILLS TO BE REMOVED TO SATISFY FEMA REGULATIONS FOR THE CULVERT EXTENSION.
 SITE 2) SITE 2 IS A TOTAL TAKE.
 SITE 3) THE AREA BETWEEN -L- AND LOOP 1A WILL BE A TOTAL TAKE. ADDITIONAL TOTAL TAKE (NO IMPACT) = 0.09 AC
 SITE 6) THE SLIVER WETLAND TO THE RIGHT OF -L- WILL BE A TOTAL TAKE. ADDITIONAL TOTAL TAKE (NO IMPACT) SW = <.01 AC CHANNEL = 45 ft WETLANDS = 0.02 AC
 Note: FILL IN STORMWATER PONDS STA. 45+00 TO 52+23 -L- RT (PSH 09)* AND 25+88 TO 26+27 -Y4- LT (PSH 13)** HAVE BEEN COORDINATED WITH DWQ-STORMWATER SECTION.
 * THE FILL IN THE STORMWATER POND ON PLAN SHEET (PSH) #9 IS 0.51 AC. AND THE VOL. REDUCTION IS 0.59 AC-FT
 ** THE FILL IN THE STORMWATER POND ON PLAN SHEET (PSH) #13 IS 0.03 AC. AND THE VOL. REDUCTION IS 0.1 AC-FT

ATN Revised 5/26/11

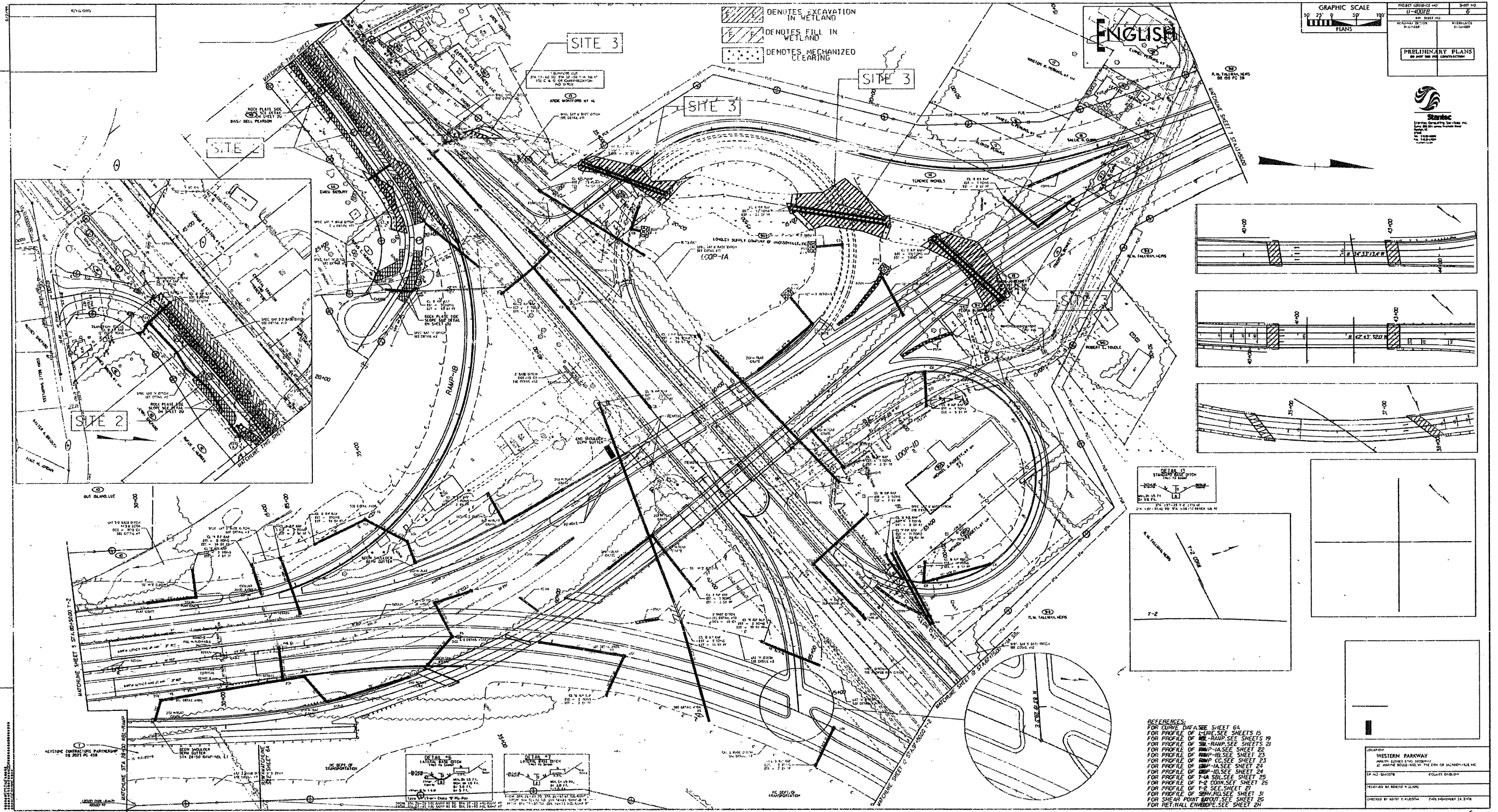
NC DEPARTMENT OF TRANSPORTATION
 DIVISION OF HIGHWAYS

ONSLow COUNTY
 WBS - 35008.1.1 (U-4007B)

REV 5/26/2011
 SHEET 1

Revised 6/15/2011
 Permit Drawing
 Sheet 1 of 7

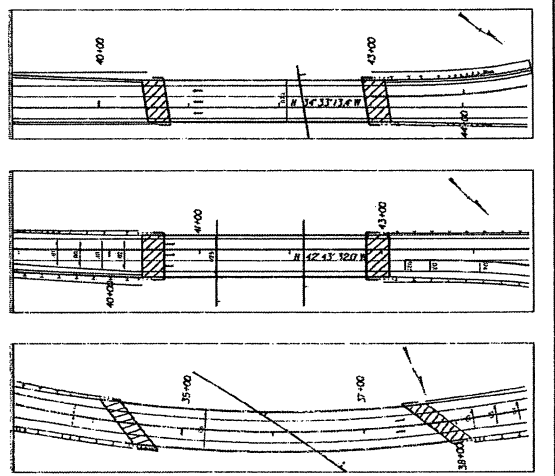
REVISIONS
05-10 CHANGED - RAMP ORNER INFO FOR PARCEL NO DISCHANGED NAME & R/W FOR PARCEL NO. 616



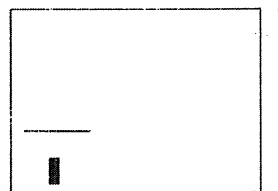
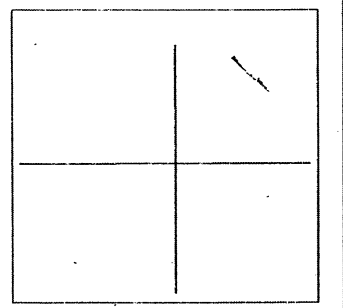
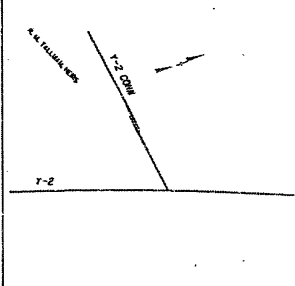
/// DENOTES EXCAVATION IN WETLAND
- - - DENOTES FILL IN WETLAND
... DENOTES MECHANIZED CLEARING

GRAPHIC SCALE
1" = 20' 0"
PLANS

PROJECT NUMBER: U-4008
SHEET NO: 6
DATE: 11/11/10
DRAWN BY: J. J. JENSEN
CHECKED BY: J. J. JENSEN
PRELIMINARY PLANS
DO NOT USE FOR CONSTRUCTION



STATIONING
1+00
2+00
3+00
4+00
5+00
6+00
7+00
8+00
9+00
10+00
11+00
12+00
13+00
14+00
15+00
16+00
17+00
18+00
19+00
20+00
21+00
22+00
23+00
24+00
25+00
26+00
27+00
28+00
29+00
30+00
31+00
32+00
33+00
34+00
35+00
36+00
37+00
38+00
39+00
40+00
41+00
42+00
43+00
44+00
45+00
46+00
47+00
48+00
49+00
50+00
51+00
52+00
53+00
54+00
55+00
56+00
57+00
58+00
59+00
60+00
61+00
62+00
63+00
64+00
65+00
66+00
67+00
68+00
69+00
70+00
71+00
72+00
73+00
74+00
75+00
76+00
77+00
78+00
79+00
80+00
81+00
82+00
83+00
84+00
85+00
86+00
87+00
88+00
89+00
90+00
91+00
92+00
93+00
94+00
95+00
96+00
97+00
98+00
99+00
100+00

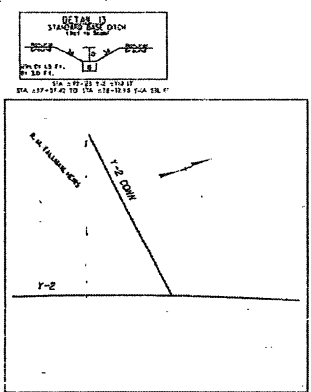
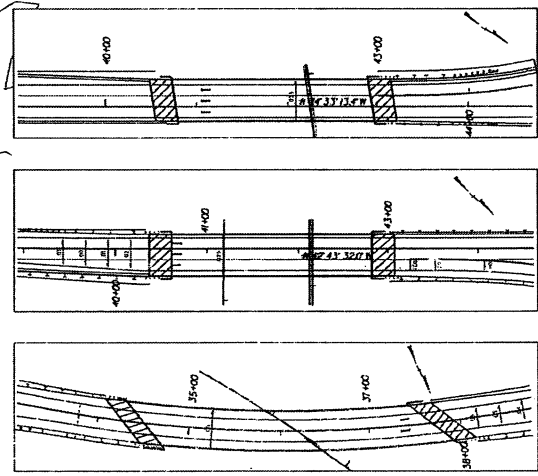
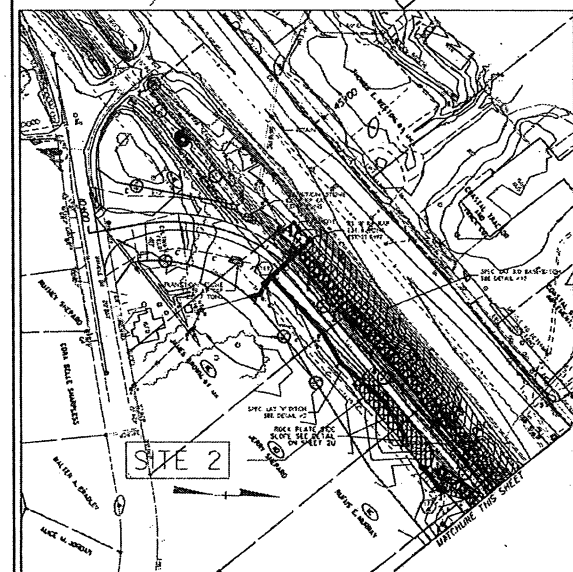
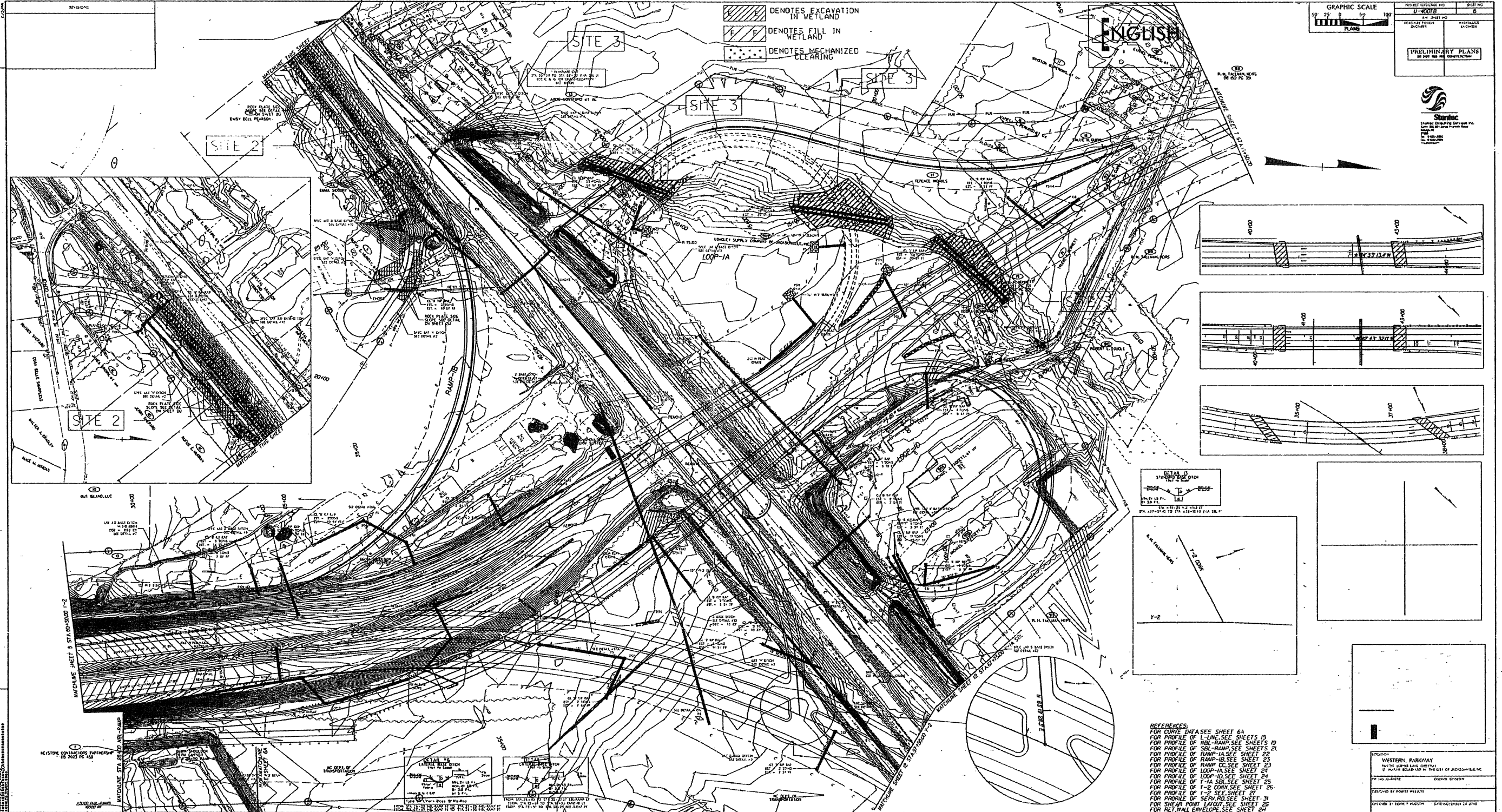


REFERENCES:
FOR CURVE DATA SEE SHEET 64
FOR PROFILE OF LINE SEE SHEETS 15
FOR PROFILE OF RAMP-1A SEE SHEETS 19
FOR PROFILE OF RAMP-1B SEE SHEETS 20
FOR PROFILE OF RAMP-1C SEE SHEET 22
FOR PROFILE OF RAMP-1D SEE SHEET 23
FOR PROFILE OF RAMP-1E SEE SHEET 23
FOR PROFILE OF RAMP-1F SEE SHEET 24
FOR PROFILE OF RAMP-1G SEE SHEET 24
FOR PROFILE OF RAMP-1H SEE SHEET 25
FOR PROFILE OF RAMP-1I SEE SHEET 25
FOR PROFILE OF RAMP-1J SEE SHEET 25
FOR PROFILE OF RAMP-1K SEE SHEET 25
FOR PROFILE OF RAMP-1L SEE SHEET 25
FOR PROFILE OF RAMP-1M SEE SHEET 25
FOR PROFILE OF RAMP-1N SEE SHEET 25
FOR PROFILE OF RAMP-1O SEE SHEET 25
FOR PROFILE OF RAMP-1P SEE SHEET 25
FOR PROFILE OF RAMP-1Q SEE SHEET 25
FOR PROFILE OF RAMP-1R SEE SHEET 25
FOR PROFILE OF RAMP-1S SEE SHEET 25
FOR PROFILE OF RAMP-1T SEE SHEET 25
FOR PROFILE OF RAMP-1U SEE SHEET 25
FOR PROFILE OF RAMP-1V SEE SHEET 25
FOR PROFILE OF RAMP-1W SEE SHEET 25
FOR PROFILE OF RAMP-1X SEE SHEET 25
FOR PROFILE OF RAMP-1Y SEE SHEET 25
FOR PROFILE OF RAMP-1Z SEE SHEET 25
FOR PROFILE OF RAMP-1A SEE SHEET 25
FOR PROFILE OF RAMP-1B SEE SHEET 25
FOR PROFILE OF RAMP-1C SEE SHEET 25
FOR PROFILE OF RAMP-1D SEE SHEET 25
FOR PROFILE OF RAMP-1E SEE SHEET 25
FOR PROFILE OF RAMP-1F SEE SHEET 25
FOR PROFILE OF RAMP-1G SEE SHEET 25
FOR PROFILE OF RAMP-1H SEE SHEET 25
FOR PROFILE OF RAMP-1I SEE SHEET 25
FOR PROFILE OF RAMP-1J SEE SHEET 25
FOR PROFILE OF RAMP-1K SEE SHEET 25
FOR PROFILE OF RAMP-1L SEE SHEET 25
FOR PROFILE OF RAMP-1M SEE SHEET 25
FOR PROFILE OF RAMP-1N SEE SHEET 25
FOR PROFILE OF RAMP-1O SEE SHEET 25
FOR PROFILE OF RAMP-1P SEE SHEET 25
FOR PROFILE OF RAMP-1Q SEE SHEET 25
FOR PROFILE OF RAMP-1R SEE SHEET 25
FOR PROFILE OF RAMP-1S SEE SHEET 25
FOR PROFILE OF RAMP-1T SEE SHEET 25
FOR PROFILE OF RAMP-1U SEE SHEET 25
FOR PROFILE OF RAMP-1V SEE SHEET 25
FOR PROFILE OF RAMP-1W SEE SHEET 25
FOR PROFILE OF RAMP-1X SEE SHEET 25
FOR PROFILE OF RAMP-1Y SEE SHEET 25
FOR PROFILE OF RAMP-1Z SEE SHEET 25

DESIGNED BY: WESTERN PARKWAY
PROJECT: WESTERN PARKWAY
SHEET NO: 6
DATE: 11/11/10
DRAWN BY: J. J. JENSEN
CHECKED BY: J. J. JENSEN

Revise 26/15/2011
Permit Drawing
Sheet 2 of 7

REVISIONS
CS-10 CHANGED PROP-OWNER INFO FOR PARCEL NO.DIG,CHANGED NAME & R/W FOR PARCEL NO.DIG



- REFERENCES:
FOR CURVE DATA SEE SHEET 6A
FOR PROFILE OF I-LINE SEE SHEETS 15
FOR PROFILE OF R/L-RAMP SEE SHEETS 19
FOR PROFILE OF S/L-RAMP SEE SHEETS 21
FOR PROFILE OF RAMP-1A SEE SHEET 22
FOR PROFILE OF RAMP-1B SEE SHEET 23
FOR PROFILE OF RAMP-1C SEE SHEET 23
FOR PROFILE OF LOOP-1A SEE SHEET 24
FOR PROFILE OF LOOP-1B SEE SHEET 24
FOR PROFILE OF 1-1A S/DL SEE SHEET 25
FOR PROFILE OF 1-2 CONV. SEE SHEET 26
FOR PROFILE OF 1-2 SEE SHEET 26
FOR PROFILE OF SERV RD. SEE SHEET 31
FOR SHEET PAV. LAYOUT SEE SHEET 35
FOR RET. WALL ENVELOPE SEE SHEET 37

GRAPHIC SCALE
0 25 50 100
FEET
PLAN

PROJECT NUMBER U-6008	SHEET NO. 6
DRAWN BY D-2417	CHECKED BY M-2417

PRELIMINARY PLANS
DO NOT USE FOR CONSTRUCTION

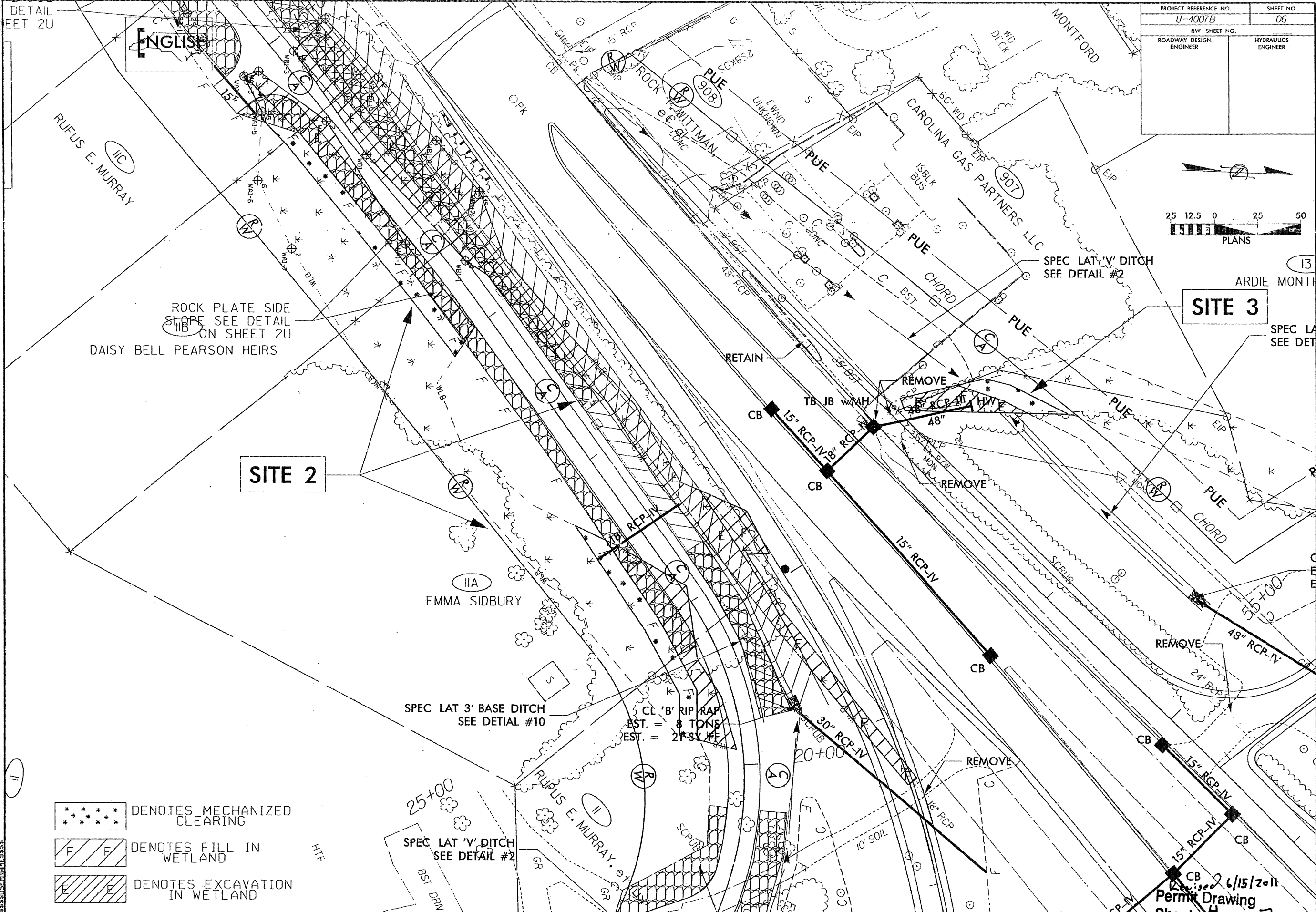
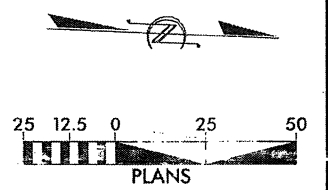


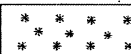
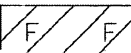
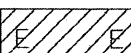
LOCATION WESTERN PARKWAY MAYFIELD, OHIO 44130 AS SHOWN ON MAP BY THE CITY OF JACKSONVILLE, OH	DRAWN BY D-2417
DESIGNED BY FORBES WELLS	CHECKED BY M-2417
DATE 12/14/2010	DATE 12/14/2010

Revised 6/15/2011
Permit Drawing
Sheet 3 of 7

DETAIL SHEET 2U

PROJECT REFERENCE NO. U-4007B	SHEET NO. 06
R/W SHEET NO.	
ROADWAY DESIGN ENGINEER	HYDRAULICS ENGINEER



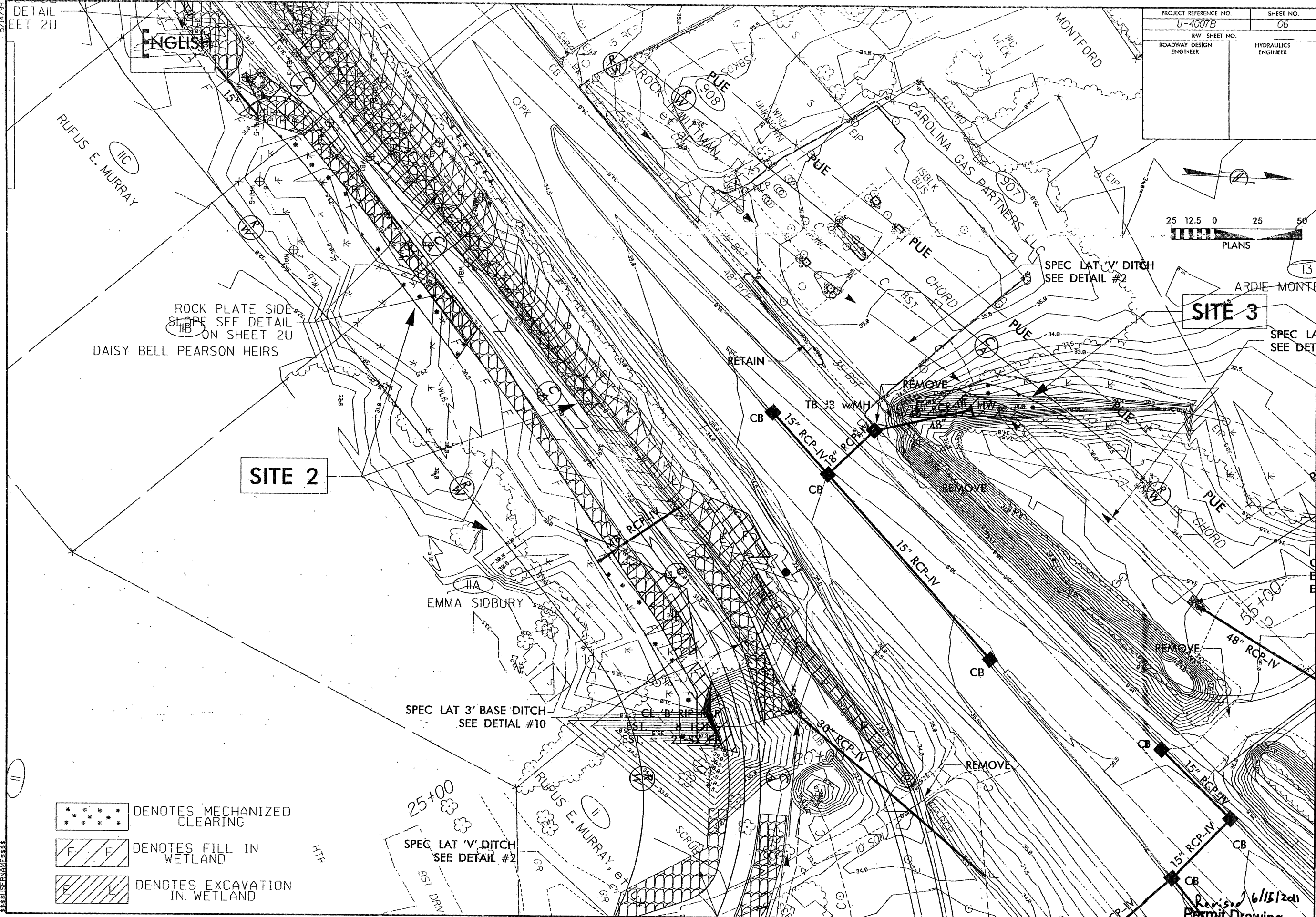
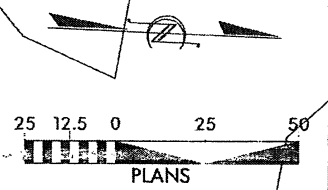
-  DENOTES MECHANIZED CLEARING
-  DENOTES FILL IN WETLAND
-  DENOTES EXCAVATION IN WETLAND


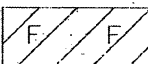
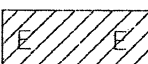
Revised 6/15/2011
Permit Drawing
Sheet 4 of 7

5/14/99

DETAIL
EET 2U


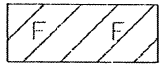
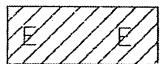
PROJECT REFERENCE NO. U-4007B	SHEET NO. 06
RW SHEET NO.	
ROADWAY DESIGN ENGINEER	HYDRAULICS ENGINEER

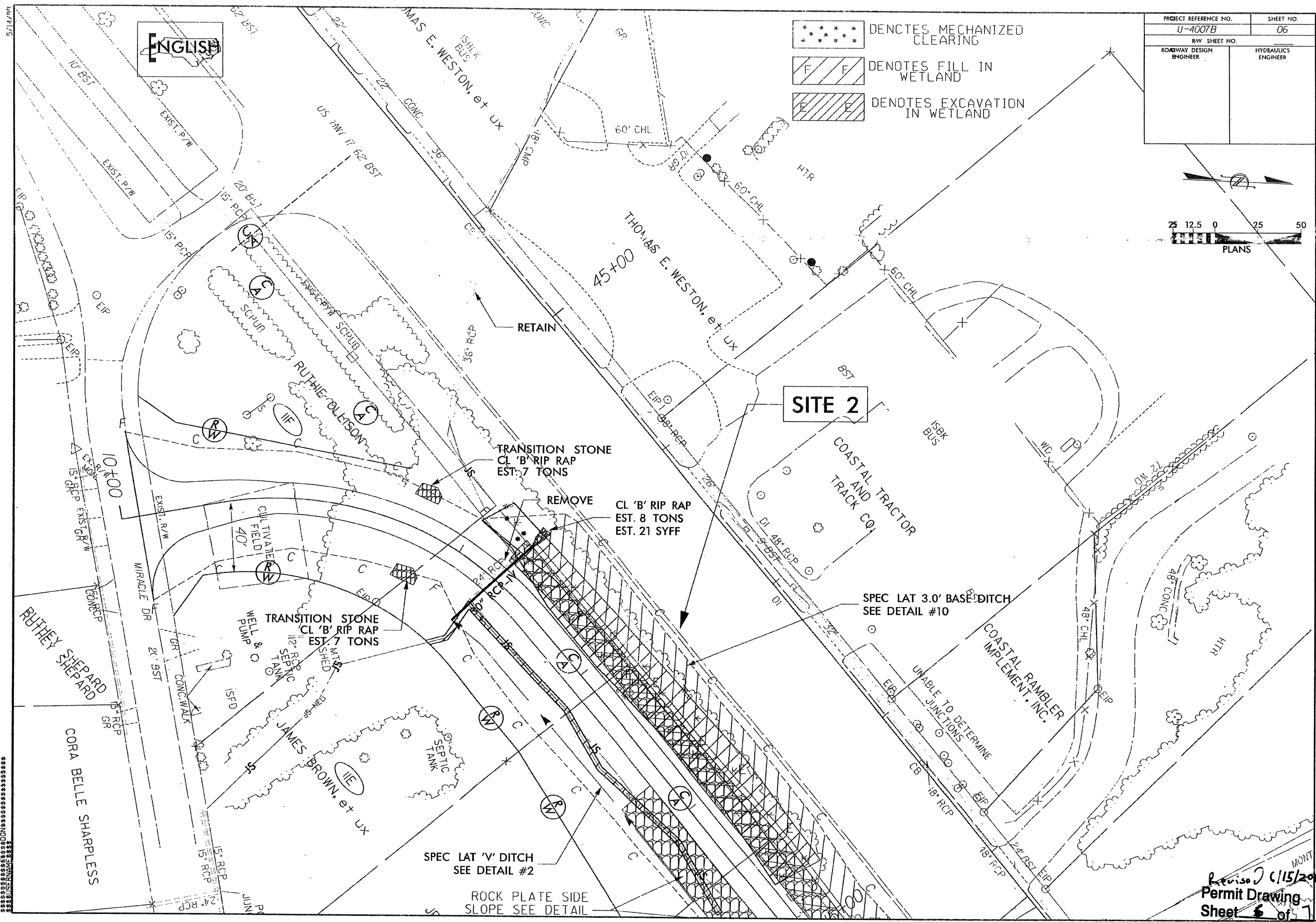
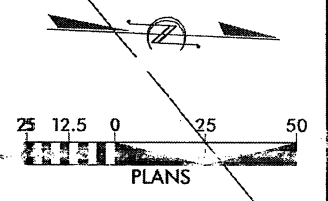


-  DENOTES MECHANIZED CLEARING
-  DENOTES FILL IN WETLAND
-  DENOTES EXCAVATION IN WETLAND

Revised 6/15/2011
 Permit Drawing
 Sheet 6 of 7




PROJECT REFERENCE NO. U-4007B	SHEET NO. 06
RW SHEET NO.	
ROADWAY DESIGN ENGINEER	HYDRAULICS ENGINEER

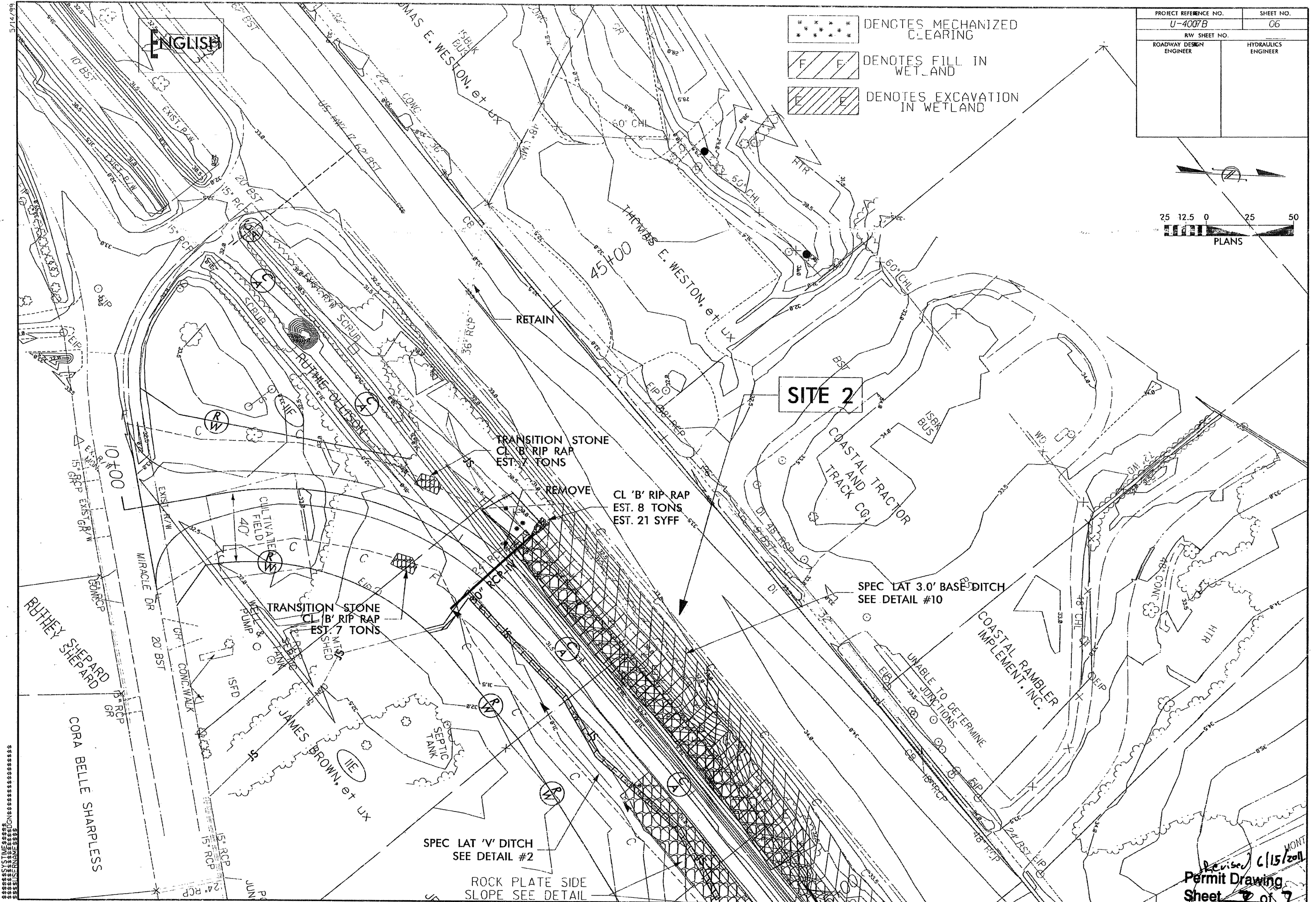
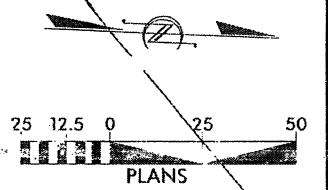
-  DENOTES MECHANIZED CLEARING
-  DENOTES FILL IN WETLAND
-  DENOTES EXCAVATION IN WETLAND



Revised 11/15/2011
 Permit Drawing
 Sheet 6 of 7

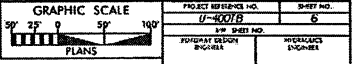
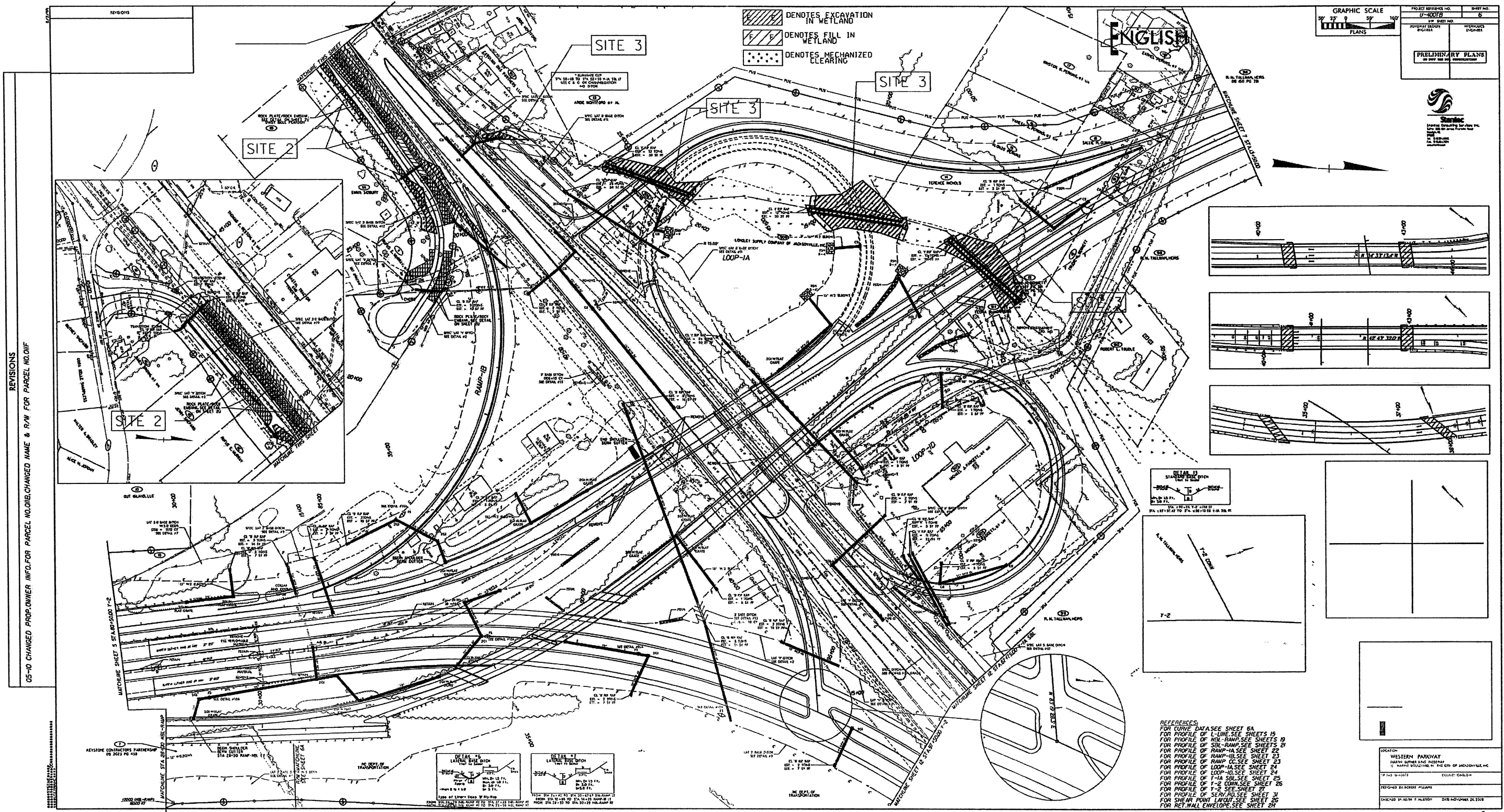
PROJECT REFERENCE NO. U-4007B	SHEET NO. 06
ROADWAY DESIGN ENGINEER	HYDRAULICS ENGINEER

-  DENOTES MECHANIZED CLEARING
-  DENOTES FILL IN WETLAND
-  DENOTES EXCAVATION IN WETLAND

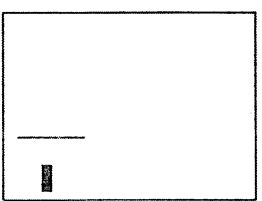
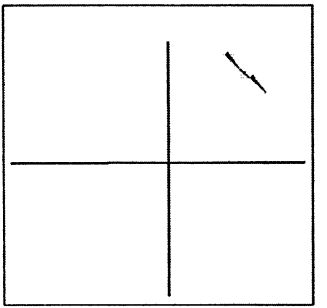
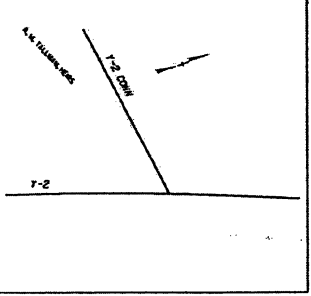
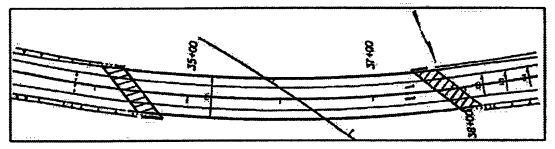
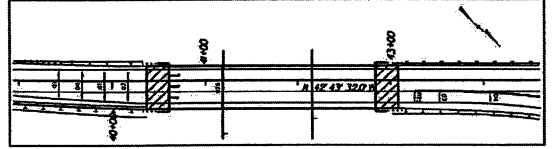
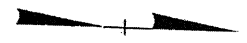


Revised 6/15/2011
 Permit Drawing
 Sheet 6 of 7

SYSTEMS TIME
 CONSTRUCTION
 ENGINEERING
 P.C.



PROJECT REFERENCE NO.	SHEET NO.
17-00013	8
PROJECT DESIGN	PRELIMINARY PLANS
DATE	DATE



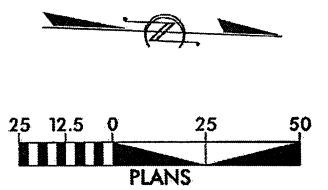
- REFERENCES:
 FOR CURVE DATA SEE SHEET 6A
 FOR PROFILE OF L-LINE SEE SHEETS 15
 FOR PROFILE OF NB-RAMP SEE SHEETS 19
 FOR PROFILE OF SB-RAMP SEE SHEETS 21
 FOR PROFILE OF RAMP-10 SEE SHEET 22
 FOR PROFILE OF RAMP-11 SEE SHEET 23
 FOR PROFILE OF RAMP-12 SEE SHEET 23
 FOR PROFILE OF LOOP-10 SEE SHEET 24
 FOR PROFILE OF LOOP-11 SEE SHEET 25
 FOR PROFILE OF LOOP-12 SEE SHEET 26
 FOR PROFILE OF T-2 SEE SHEET 27
 FOR PROFILE OF SB-RAMP SEE SHEET 31
 FOR SHEAR POINT LAYOUT SEE SHEET 26
 FOR RET. WALL ENVELOPE SEE SHEET 28

CREATOR	WESTERN PARKWAY
DATE	11/11/2011
COUNTY	DALLAS
DESIGNED BY	WESTERN PARKWAY
CHECKED BY	WESTERN PARKWAY

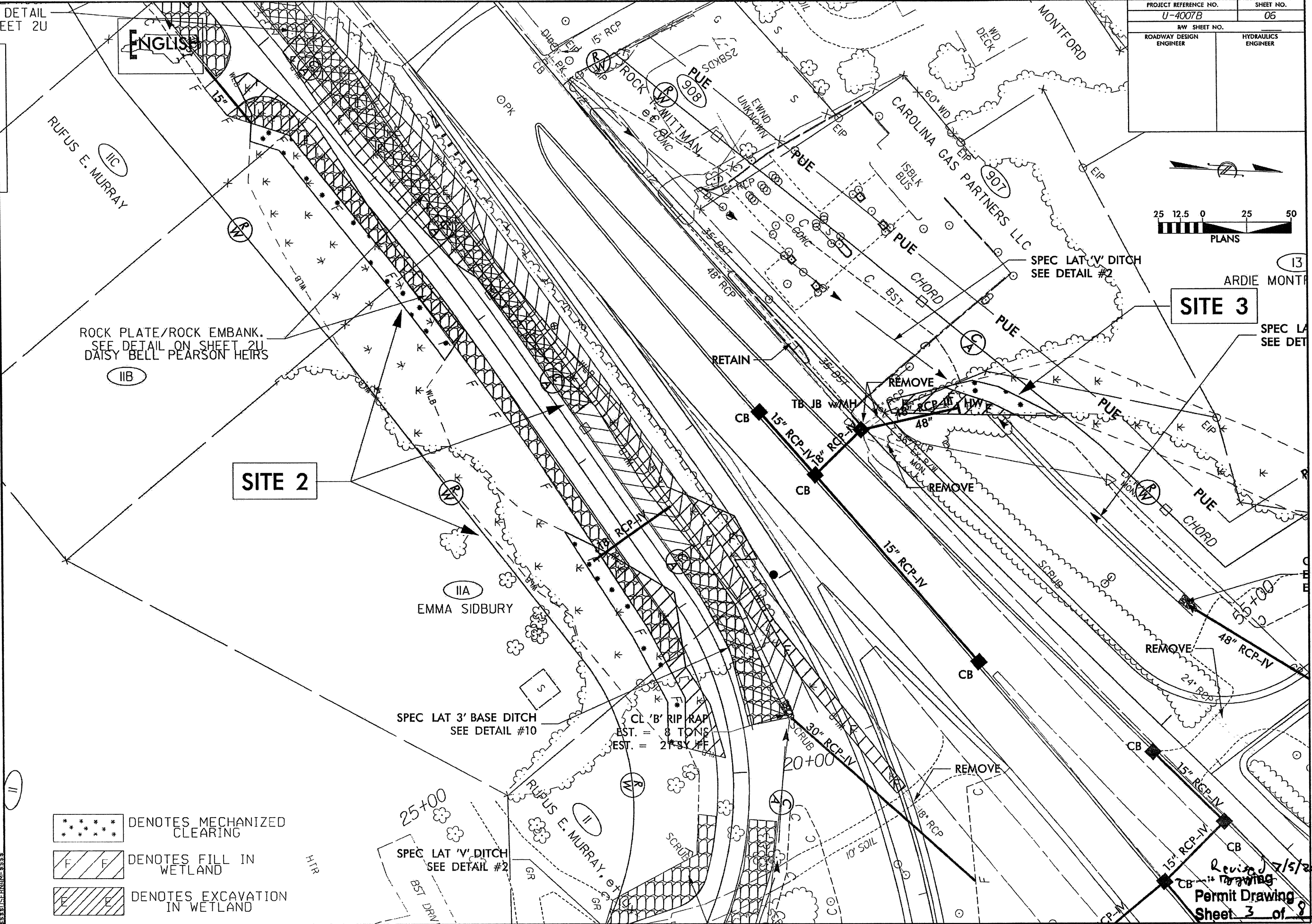
REVISIONS
 05-10 CHANGED PROP. OWNER INFO. FOR PARCEL NO. DUE TO CHANGED NAME & R/W FOR PARCEL NO. DUE

Revised 7/5/2011
 Permit Drawing
 Sheet 1 of 8

PROJECT REFERENCE NO. U-4007B	SHEET NO. 06
RAW SHEET NO.	
ROADWAY DESIGN ENGINEER	HYDRAULICS ENGINEER




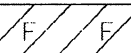
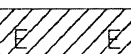
5/14/99
DETAIL SHEET 2U



ROCK PLATE/ROCK EMBANK.
SEE DETAIL ON SHEET 2U
DAISY BELL PEARSON HEIRS

SITE 2

SITE 3

-  DENOTES MECHANIZED CLEARING
-  DENOTES FILL IN WETLAND
-  DENOTES EXCAVATION IN WETLAND

SPEC LAT 3' BASE DITCH
SEE DETAIL #10

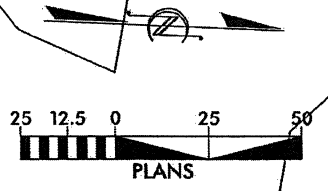
SPEC LAT 'V' DITCH
SEE DETAIL #2

CL 'B' RIP RAP
EST. = 8 TONS
EST. = 27 SY WF

Revised 7/5/2011
Permit Drawing
Sheet 3 of 9

5/14/99
DETAIL
SHEET 2U

PROJECT REFERENCE NO. U-4007B	SHEET NO. 06
R/W SHEET NO.	
ROADWAY DESIGN ENGINEER	HYDRAULICS ENGINEER



RUFUS E. MURRAY (IIC)

ROCK PLATE/ROCK EMBANK.
SEE DETAIL ON SHEET 2U
DAISY BELL PEARSON HEIRS (IIB)

SITE 2

EMMA SIDBURY (IIA)


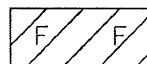

SPEC LAT 3' BASE DITCH
SEE DETAIL #10

SPEC LAT 'V' DITCH
SEE DETAIL #2

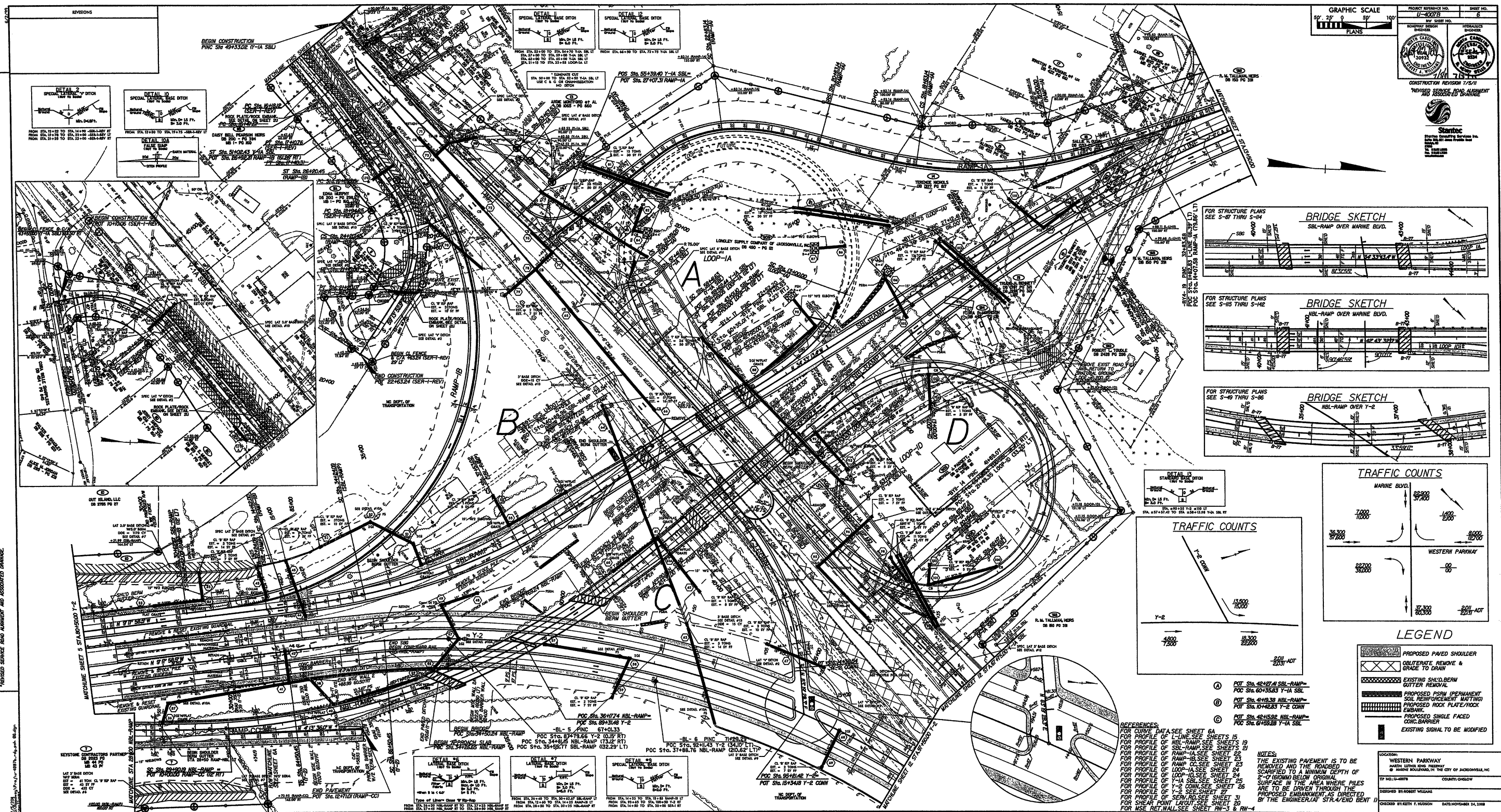
RUFUS E. MURRAY, et al (II)

CAROLINA GAS PARTNERS LLC (307)

SITE 3

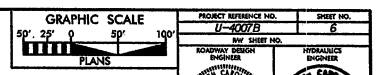
-  DENOTES MECHANIZED CLEARING
-  DENOTES FILL IN WETLAND
-  DENOTES EXCAVATION IN WETLAND

Revised 7/5/2011
Permit Drawing
Sheet 4 of 8



REVISIONS

NO. 1	DATE	DESCRIPTION



PROJECT NUMBER: 17-4078
SHEET NO.: 6

DESIGNED BY: [Signature]
CHECKED BY: [Signature]

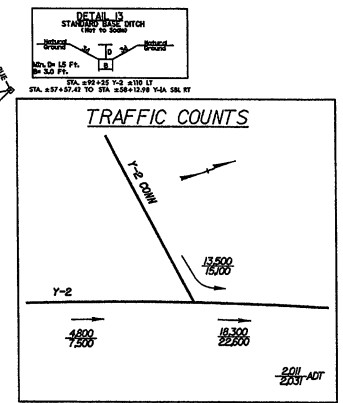
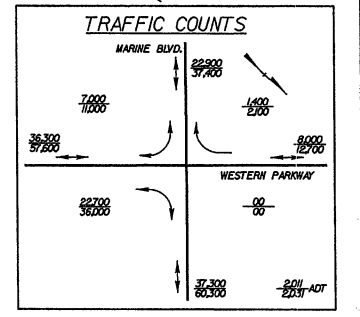
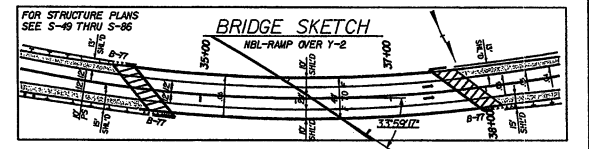
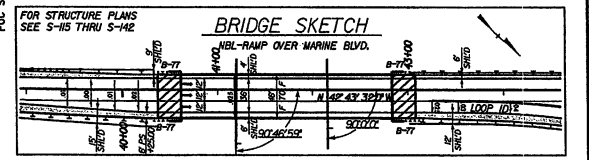
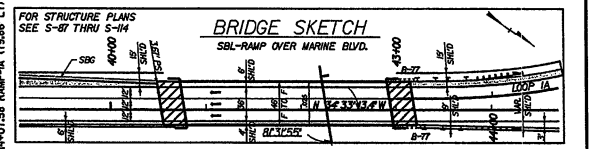
DATE: NOVEMBER 14, 2008

LOCATION: WESTERN PARKWAY @ MARINE BOULEVARD, IN THE CITY OF JACKSONVILLE, NC

CONTRACT NO.: 17-4078

CONSTRUCTION REVISION 1/5/11

REVISED SERVICE ROAD ALIGNMENT AND ASSOCIATED DRAINAGE



LEGEND

- PROPOSED PAVED SHOULDER
- OBLETE REMOVE & GRADE TO DRAIN
- EXISTING SHOULDER
- GUTTER REMOVAL
- PROPOSED PSRM (PERMANENT SOIL REINFORCEMENT MATTING)
- PROPOSED ROCK PLATE/ROCK
- EXISTING
- PROPOSED SINGLE FACED CONC. BARRIER
- EXISTING SIGNAL TO BE MODIFIED

REFERENCES:

- FOR CURVE DATA SEE SHEET 6A
- FOR PROFILE OF I-LINE SEE SHEETS 15
- FOR PROFILE OF NBL-RAMP SEE SHEETS 19
- FOR PROFILE OF SBL-RAMP SEE SHEETS 21
- FOR PROFILE OF RAMP-A SEE SHEET 22
- FOR PROFILE OF RAMP-B SEE SHEET 23
- FOR PROFILE OF RAMP-C SEE SHEET 24
- FOR PROFILE OF LOOP-A SEE SHEET 24
- FOR PROFILE OF LOOP-B SEE SHEET 24
- FOR PROFILE OF LOOP-C SEE SHEET 24
- FOR PROFILE OF LOOP-D SEE SHEET 24
- FOR PROFILE OF Y-1 SEE SHEET 25
- FOR PROFILE OF Y-2 SEE SHEET 26
- FOR PROFILE OF Y-3 SEE SHEET 27
- FOR PROFILE OF Y-4 SEE SHEET 27
- FOR PROFILE OF Y-5 SEE SHEET 27
- FOR PROFILE OF Y-6 SEE SHEET 27
- FOR PROFILE OF Y-7 SEE SHEET 27
- FOR PROFILE OF Y-8 SEE SHEET 27
- FOR PROFILE OF Y-9 SEE SHEET 27
- FOR PROFILE OF Y-10 SEE SHEET 27
- FOR PROFILE OF Y-11 SEE SHEET 27
- FOR PROFILE OF Y-12 SEE SHEET 27
- FOR PROFILE OF Y-13 SEE SHEET 27
- FOR PROFILE OF Y-14 SEE SHEET 27
- FOR PROFILE OF Y-15 SEE SHEET 27
- FOR PROFILE OF Y-16 SEE SHEET 27
- FOR PROFILE OF Y-17 SEE SHEET 27
- FOR PROFILE OF Y-18 SEE SHEET 27
- FOR PROFILE OF Y-19 SEE SHEET 27
- FOR PROFILE OF Y-20 SEE SHEET 27
- FOR PROFILE OF Y-21 SEE SHEET 27
- FOR PROFILE OF Y-22 SEE SHEET 27
- FOR PROFILE OF Y-23 SEE SHEET 27
- FOR PROFILE OF Y-24 SEE SHEET 27
- FOR PROFILE OF Y-25 SEE SHEET 27
- FOR PROFILE OF Y-26 SEE SHEET 27
- FOR PROFILE OF Y-27 SEE SHEET 27
- FOR PROFILE OF Y-28 SEE SHEET 27
- FOR PROFILE OF Y-29 SEE SHEET 27
- FOR PROFILE OF Y-30 SEE SHEET 27
- FOR PROFILE OF Y-31 SEE SHEET 27
- FOR PROFILE OF Y-32 SEE SHEET 27
- FOR PROFILE OF Y-33 SEE SHEET 27
- FOR PROFILE OF Y-34 SEE SHEET 27
- FOR PROFILE OF Y-35 SEE SHEET 27
- FOR PROFILE OF Y-36 SEE SHEET 27
- FOR PROFILE OF Y-37 SEE SHEET 27
- FOR PROFILE OF Y-38 SEE SHEET 27
- FOR PROFILE OF Y-39 SEE SHEET 27
- FOR PROFILE OF Y-40 SEE SHEET 27
- FOR PROFILE OF Y-41 SEE SHEET 27
- FOR PROFILE OF Y-42 SEE SHEET 27
- FOR PROFILE OF Y-43 SEE SHEET 27
- FOR PROFILE OF Y-44 SEE SHEET 27
- FOR PROFILE OF Y-45 SEE SHEET 27
- FOR PROFILE OF Y-46 SEE SHEET 27
- FOR PROFILE OF Y-47 SEE SHEET 27
- FOR PROFILE OF Y-48 SEE SHEET 27
- FOR PROFILE OF Y-49 SEE SHEET 27
- FOR PROFILE OF Y-50 SEE SHEET 27

NOTES:

- THE EXISTING PAVEMENT IS TO BE REMOVED AND THE ROADBED SCARPED TO A MINIMUM DEPTH OF 2'-0" (GROUND) BELOW ORIGINAL SURFACE IN THE AREA WHERE PILES ARE TO BE DRIVEN THROUGH THE PROPOSED EMBANKMENT AS DIRECTED BY THE ENGINEER (I.P. STR./END BENT 1)
- FOR MSE RET. WALL SEE SHEET RW-3 & RW-4

Revised 7/5/2011
Permit Drawing
Sheet 7 of 8