

Lusk, Elizabeth L

From: Slaughter, Johnathan H
Sent: Wednesday, October 17, 2012 3:08 PM
To: Lusk, Elizabeth L; Dagnino, Carla S
Subject: FW: U-2211B permit mod
Attachments: heath.pdf

FYI - I have requested a very minor permit mod for U-2211B in Caldwell. I've discussed it with Monte and this email will suffice as the formal request from DOT. He will send the approval to Greg Thorpe and copy me. Just keeping you in the loop.

-----Original Message-----

From: Slaughter, Johnathan H
Sent: Tuesday, October 16, 2012 4:29 PM
To: Matthews, Monte K SAW; Mike Parker (Mike.Parker@ncdenr.gov); Beaver, G Trent; Trivette, Neil; Freeman, R. Mark; Poindexter, David A; Tetzlaff, Douglas J; Elmore, Bethany
Subject: U-2211B permit mod

Monte,

Per our conversation, here is a follow up email requesting a minor modification to the Site 3 temporary impacts on U-2211B in Caldwell. The town is installing a new sanitary sewer line adjacent to our Site 3 impact. The plan was to bore and jack the pipe under the stream but there is concern about rock in the area and they would prefer to use an open cut trench method of crossing the stream with the new sewer line. This method will also save us an estimated \$100,000 I'm told.

We basically need ~ 40 linear feet of dewatering added to the permit for the dike and pump around operation. Once the new line is laid and backfilled, the banks will be seeded and matted with coir fiber so there should be no permanent bank hardening impact. As you can see in the cross section, the new line will be laid below the streambed elevation. Please see the attached utility plan sheets and cross section (3 pages). Should you or Mr. Parker need any additional information, please advise. Thanks.

-----Original Message-----

From: Elmore, Bethany
Sent: Tuesday, October 16, 2012 12:09 PM
To: Slaughter, Johnathan H
Subject: U-2211B Open Cut

Email correspondence to and from this sender is subject to the N.C. Public Records Law and may be disclosed to third parties.

8/17/99

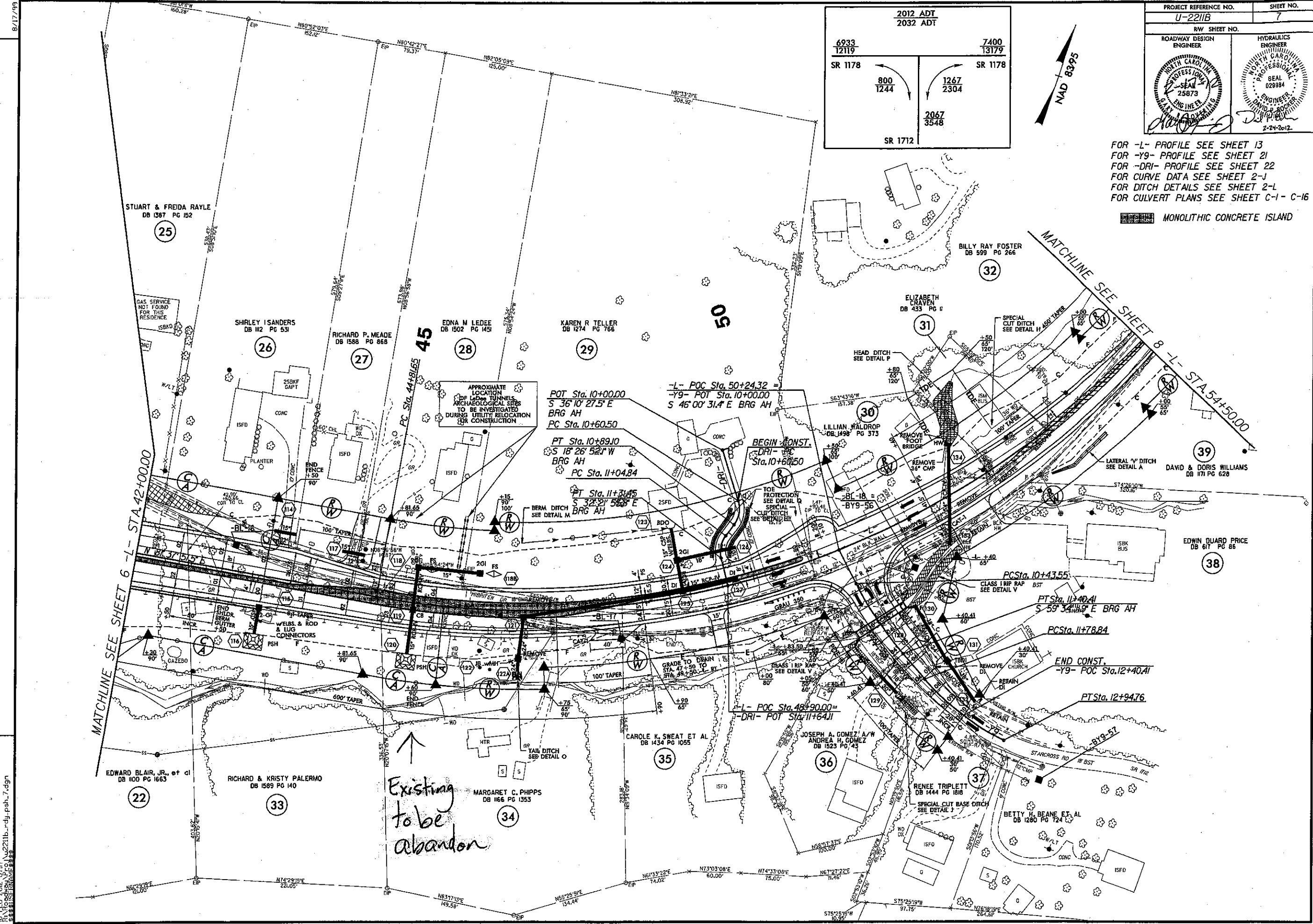
2012 ADT 2032 ADT	
6933 12119	7400 13179
SR 1178	SR 1178
800 1244	1267 2304
	2067 3548
SR 1712	

PROJECT REFERENCE NO. U-2211B	SHEET NO. 7
RW SHEET NO.	
ROADWAY DESIGN ENGINEER	HYDRAULICS ENGINEER

FOR -L- PROFILE SEE SHEET 13
 FOR -Y9- PROFILE SEE SHEET 21
 FOR -DRI- PROFILE SEE SHEET 22
 FOR CURVE DATA SEE SHEET 2-J
 FOR DITCH DETAILS SEE SHEET 2-L
 FOR CULVERT PLANS SEE SHEET C-1 - C-16

MONOLITHIC CONCRETE ISLAND

REVISIONS



15-FEB-2012 07:47
 U:\2211b_r.dj.psh_7.dgn
 2211B.DWG

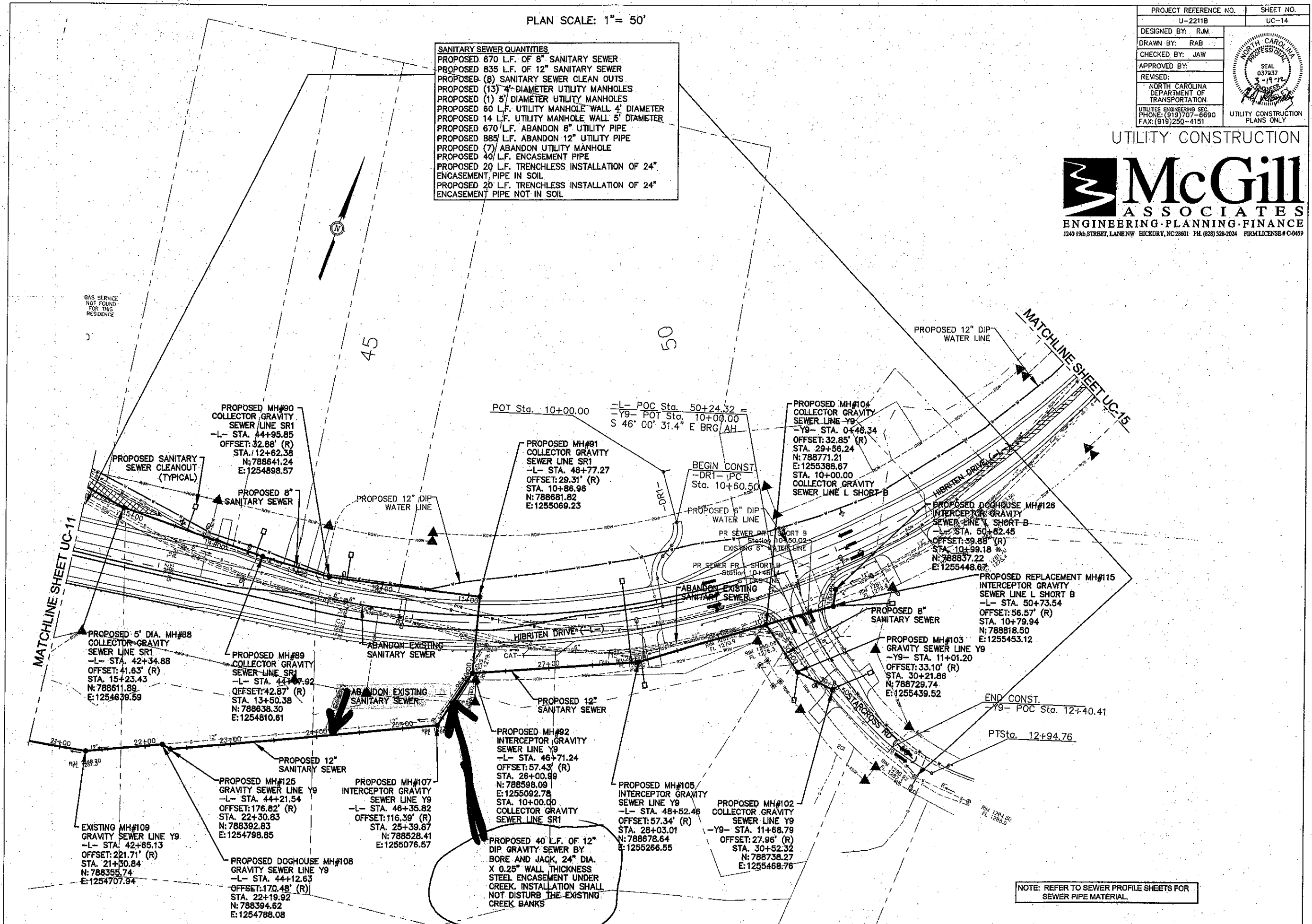
PLAN SCALE: 1" = 50'

PROJECT REFERENCE NO. U-2211B	SHEET NO. UC-14
DESIGNED BY: RJM	
DRAWN BY: RAB	
CHECKED BY: JAW	
APPROVED BY:	
REVISED:	
NORTH CAROLINA DEPARTMENT OF TRANSPORTATION UTILITIES ENGINEERING SECTION PHONE: (919) 707-6690 FAX: (919) 250-4151	
UTILITY CONSTRUCTION PLANS ONLY	

UTILITY CONSTRUCTION



- SANITARY SEWER QUANTITIES**
- PROPOSED 670 L.F. OF 8" SANITARY SEWER
 - PROPOSED 835 L.F. OF 12" SANITARY SEWER
 - PROPOSED (8) SANITARY SEWER CLEAN OUTS
 - PROPOSED (13) 4" DIAMETER UTILITY MANHOLES
 - PROPOSED (1) 5" DIAMETER UTILITY MANHOLES
 - PROPOSED 60 L.F. UTILITY MANHOLE WALL 4" DIAMETER
 - PROPOSED 14 L.F. UTILITY MANHOLE WALL 5" DIAMETER
 - PROPOSED 670 L.F. ABANDON 8" UTILITY PIPE
 - PROPOSED 885 L.F. ABANDON 12" UTILITY PIPE
 - PROPOSED (7) ABANDON UTILITY MANHOLE
 - PROPOSED 40 L.F. ENCASEMENT PIPE
 - PROPOSED 20 L.F. TRENCHLESS INSTALLATION OF 24" ENCASEMENT PIPE IN SOIL
 - PROPOSED 20 L.F. TRENCHLESS INSTALLATION OF 24" ENCASEMENT PIPE NOT IN SOIL



NOTE: REFER TO SEWER PROFILE SHEETS FOR SEWER PIPE MATERIAL.

PROJECT REFERENCE NO.	SHEET NO.
U-2211B	UC-23
DESIGNED BY: RJM	
DRAWN BY: RAB	
CHECKED BY: JAW	
APPROVED BY:	
REVISED:	NORTH CAROLINA DEPARTMENT OF TRANSPORTATION UTILITY CONSTRUCTION PLANS ONLY
UTILITIES ENGINEERING SEC PHONE: (919) 707-6690 FAX: (919) 250-4151	

UTILITY CONSTRUCTION

McGill
ASSOCIATES
ENGINEERING · PLANNING · FINANCE
1240 19th STREET, LANE NW HICKORY, NC 28601 TEL (828) 322-2024 FIRM LICENSE # C0459

**PROPOSED 8" GRAVITY
SEWER LINE Y9**

SCALE:
HORIZONTAL: 1"= 50'
VERTICAL: 1"= 5'

**PROPOSED 8" GRAVITY
SEWER LINE L SHORT B**

SCALE:
HORIZONTAL: 1"= 50'
VERTICAL: 1"= 5'

