



STATE OF NORTH CAROLINA  
DEPARTMENT OF TRANSPORTATION

BEVERLY EAVES PERDUE  
GOVERNOR

EUGENE A. CONTI, JR.  
SECRETARY

November 30, 2012

Department of Environment and Natural Resources  
Division of Water Quality  
2090 U.S. 70 Highway  
Swannanoa, NC 28778

ATTN: Mr. Mike Parker  
NCDOT Coordinator

Dear Sir:

**Subject:** Request for Modification for a Section 401 Water Quality Certification for SR 1001 (Connelly Springs Road) from US 321A (Norwood Street) to SR 1712 (Starcross Road) in Caldwell County. Federal Aid Project No. MA-STP-7533(2), Division 11, WBS 34783.1.1, TIP No. U-2211B. Debit \$570 from WBS 34783.1.1.

**Reference:** Individual Section 404 Permit (USACE Action ID SAW-2006-32042) and Section 401 Water Quality Certification (DWQ Project No. 2011-0844), dated January 24, 2012 and January 3, 2012, respectively

Modified Individual Section 404 Permit, dated July 5, 2012

Modified Individual Section 404 Permit, dated October 18, 2012

The North Carolina Department of Transportation (NCDOT) requests a permit modification to include additional temporary stream impacts from utilities for the above-referenced project. The proposed wetland and stream mitigation has not changed since the modified Individual Permit (IP) was issued in July 2012. Please see the attached utility drawings showing the location of the additional temporary impacts.

Summary of Jurisdictional Impacts:

This project will permanently impact 0.24 acre of wetlands, 1,610 linear feet of streams, and temporarily impact 0.01 acre (93 linear feet) of streams. Previously, it was proposed that only 0.01 acre (53 linear feet) of stream were to be temporarily impacted. However, the NCDOT is requesting an additional 40 linear feet of temporary impact for dewatering to UT1 to Gunpowder Creek.

MAILING ADDRESS:  
NC DEPARTMENT OF TRANSPORTATION  
PROJECT DEVELOPMENT AND ENVIRONMENTAL ANALYSIS  
1598 MAIL SERVICE CENTER  
RALEIGH NC 27699-1598

TELEPHONE: 919-717-6100  
FAX: 919-212-5785

WEBSITE: [WWW.DOH.DOT.STATE.NC.US](http://WWW.DOH.DOT.STATE.NC.US)

LOCATION:  
1020 BIRCH RIDGE DRIVE  
RALEIGH NC, 27610-4328

A new sanitary sewer line will be installed by an open cut trench adjacent to the Permit Site 3 impact. Therefore, the NCDOT is proposing 40 linear feet of dewatering for a dike and pump around operation while the new sewer line is being installed where it crosses the creek. Once the new line is laid and backfilled, the banks will be seeded and matted with coir fiber so there should be no permanent bank hardening impact. The new line will be laid below the streambed elevation (as shown on utility permit drawing 3 of 3).

No additional mitigation is proposed for the additional 40 linear feet of temporary impact as it does not constitute a loss of waters. Compensatory mitigation for the 0.24 acre of wetland impacts for this project will be provided by the Ecosystem Enhancement Program (EEP). The EEP will also be providing all required compensatory stream mitigation required for this project as outlined in the IP (per the EEP acceptance letter dated May 1, 2012). There have been no other changes from the previous permit modification request.

### REGULATORY APPROVALS

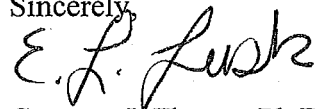
Section 404: The USACE has already issued an Individual 404 Permit Modification dated October 18, 2012 to include the above-described activities.

Section 401: We are hereby requesting a 401 Water Quality Certification Modification from the N. C. Division of Water Quality. In compliance with Section 143 215.3D(e) of the NCAC, we will provide \$570.00 to act as payment for processing the Section 401 permit modification previously noted in this application (see Subject line). We are providing three (3) copies of this application to the NCDWQ for their review and approval.

Thank you for your assistance with this project. If you have any questions or need additional information, please contact Erin Cheely at [ekcheely@ncdot.gov](mailto:ekcheely@ncdot.gov) or (919) 707-6108.

A copy of this permit modification request and its distribution list will be posted on the NCDOT website at <http://www.ncdot.org/doh/preconstruct/pe/neu/permit.html>

Sincerely,



Gregory J. Thorpe, Ph.D., Manager  
Project Development and Environmental Analysis Unit

cc:

NCDOT Permit Application Standard Distribution List.

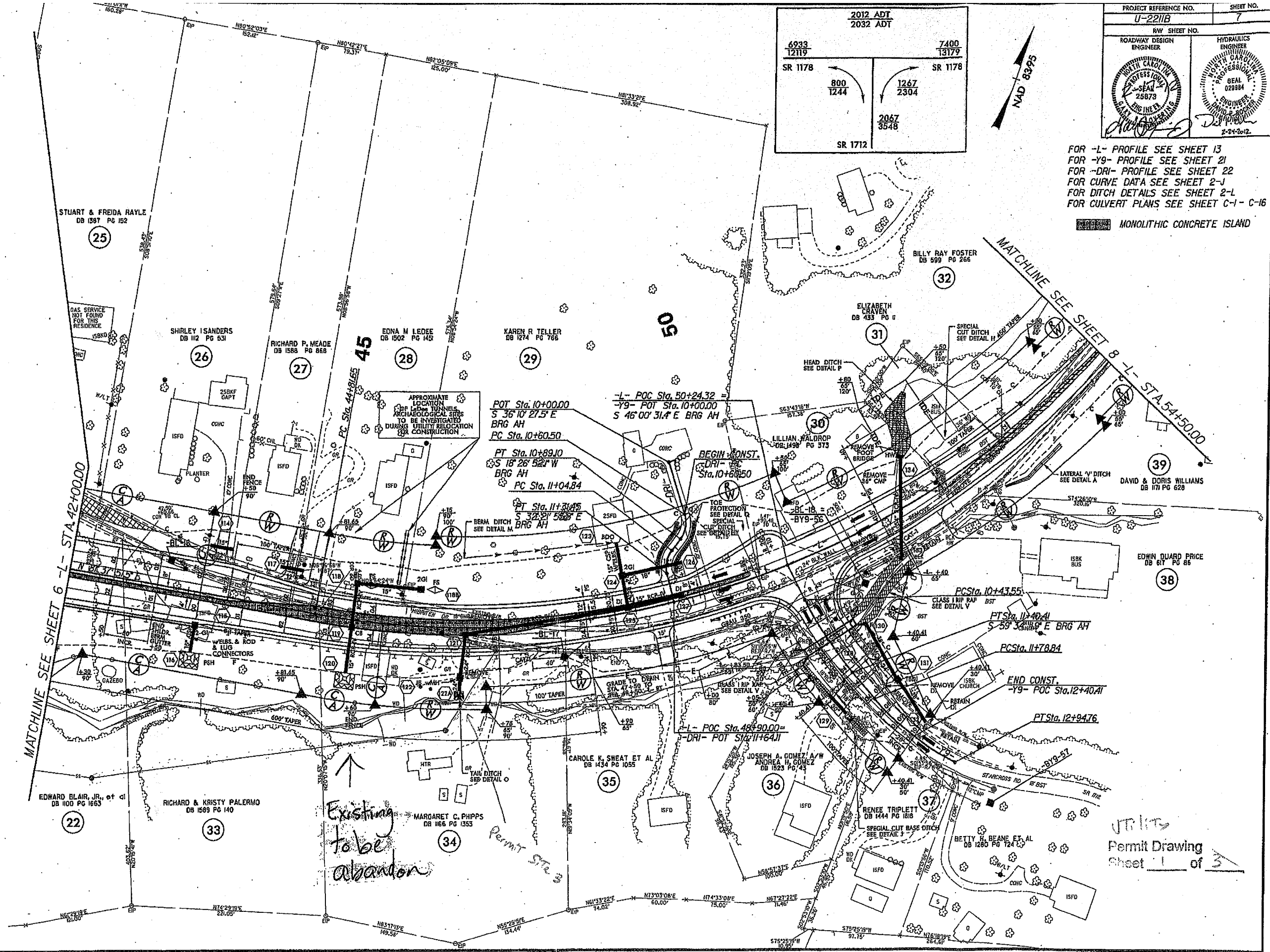
B/17/9

2012 ADT	
2032 ADT	
6933 12119	7400 13179
SR 1178	SR 1178
800 1244	1267 2304
2067 3548	
SR 1712	

PROJECT REFERENCE NO.	SHEET NO.
U-2211B	7
RW SHEET NO.	
ROADWAY DESIGN ENGINEER	HYDRAULICS ENGINEER

FOR -L- PROFILE SEE SHEET 13  
 FOR -Y9- PROFILE SEE SHEET 21  
 FOR -DRI- PROFILE SEE SHEET 22  
 FOR CURVE DATA SEE SHEET 2-J  
 FOR DITCH DETAILS SEE SHEET 2-L  
 FOR CULVERT PLANS SEE SHEET C-1 - C-16

MONOLITHIC CONCRETE ISLAND



REVISIONS

16-FEB-2012 07:47  
 R:\PROJECTS\2011\U-2211B\_rdy\_psh\_7.dgn  
 1:10  
 1:10

Permit Drawing  
 Sheet 1 of 3

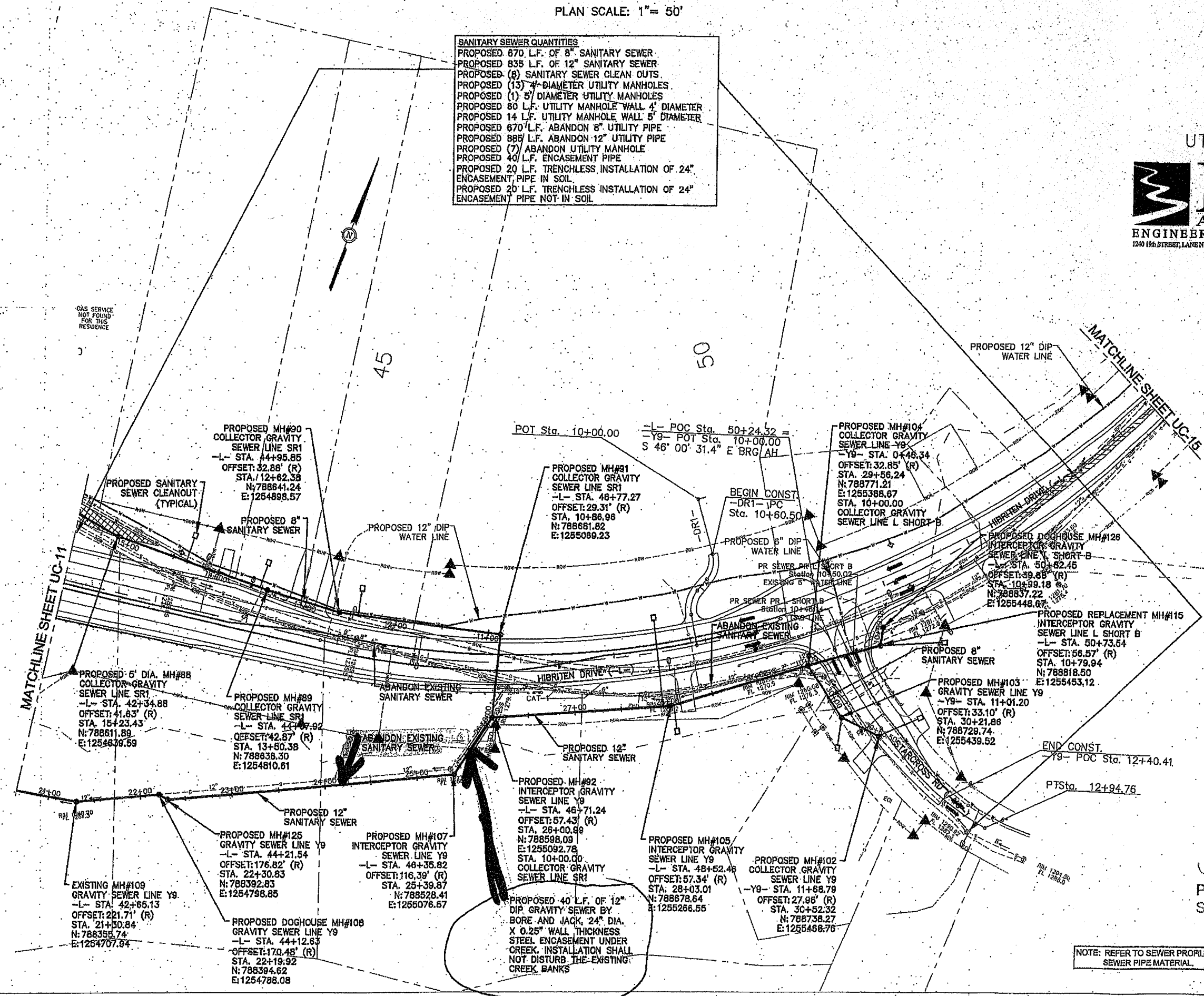
PLAN SCALE: 1" = 50'

PROJECT REFERENCE NO. U-2211B	SHEET NO. UC-14
DESIGNED BY: R.J.M.	
DRAWN BY: RAB	
CHECKED BY: JAW	
APPROVED BY:	
REVISED:	UTILITY CONSTRUCTION PLANS ONLY
NORTH CAROLINA DEPARTMENT OF TRANSPORTATION UTILITIES ENGINEERING SEC. PHONE: (919) 707-6690 FAX: (919) 250-4151	

**SANITARY SEWER QUANTITIES**  
 PROPOSED 670 L.F. OF 8" SANITARY SEWER  
 PROPOSED 835 L.F. OF 12" SANITARY SEWER  
 PROPOSED (8) SANITARY SEWER CLEAN OUTS  
 PROPOSED (13) 4' DIAMETER UTILITY MANHOLES  
 PROPOSED (1) 5' DIAMETER UTILITY MANHOLES  
 PROPOSED 60 L.F. UTILITY MANHOLE WALL 4' DIAMETER  
 PROPOSED 14 L.F. UTILITY MANHOLE WALL 5' DIAMETER  
 PROPOSED 670 L.F. ABANDON 8" UTILITY PIPE  
 PROPOSED 889 L.F. ABANDON 12" UTILITY PIPE  
 PROPOSED (7) ABANDON UTILITY MANHOLE  
 PROPOSED 40 L.F. ENCASEMENT PIPE  
 PROPOSED 20 L.F. TRENCHLESS INSTALLATION OF 24" ENCASEMENT PIPE IN SOIL  
 PROPOSED 20 L.F. TRENCHLESS INSTALLATION OF 24" ENCASEMENT PIPE NOT IN SOIL

UTILITY CONSTRUCTION

**McGill ASSOCIATES**  
 ENGINEERING-PLANNING-FINANCE  
 1240 19th STREET, LANEY HWY, HICKORY, NC 28601 PH: (828) 328-2024 FIRM LICENSE # C-0459



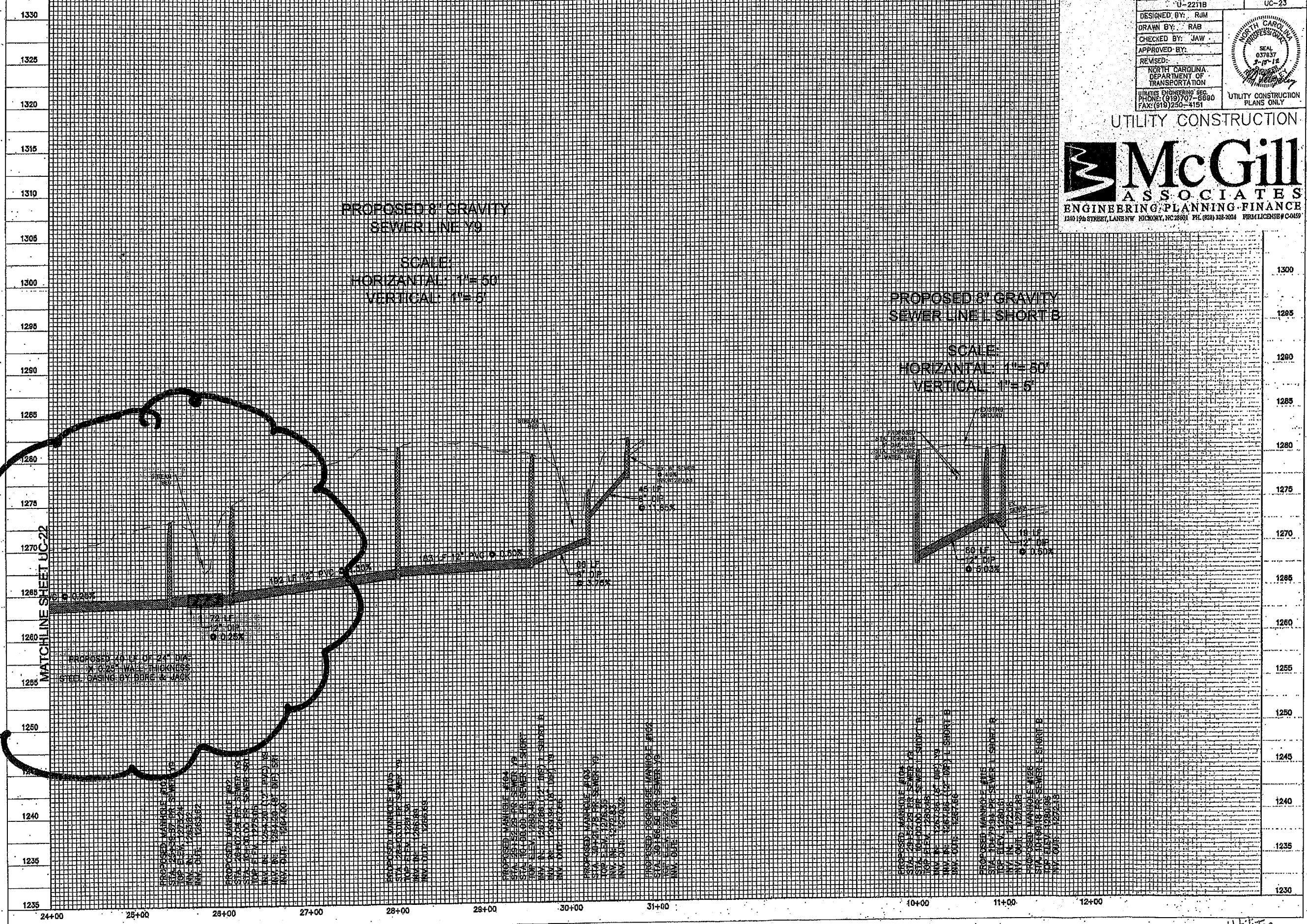
Utility  
 Permit Drawing  
 Sheet 2 of 3

NOTE: REFER TO SEWER PROFILE SHEETS FOR SEWER PIPE MATERIAL.



PROJECT REFERENCE NO. UC-23  
 DESIGNED BY: RJM  
 DRAWN BY: RAB  
 CHECKED BY: JAW  
 APPROVED BY:  
 REVISED:  
 NORTH CAROLINA DEPARTMENT OF TRANSPORTATION  
 UTILITIES ENGINEERING SEC.  
 PHONE: (919) 707-6690  
 FAX: (919) 250-4151  
 SEAL  
 NORTH CAROLINA PROFESSIONAL ENGINEER  
 037837  
 5-15-12  
 UTILITY CONSTRUCTION PLANS ONLY

UTILITY CONSTRUCTION



PROPOSED 8" GRAVITY  
 SEWER LINE Y9  
 SCALE:  
 HORIZONTAL: 1"=50'  
 VERTICAL: 1"=5'

PROPOSED 8" GRAVITY  
 SEWER LINE L SHORT B  
 SCALE:  
 HORIZONTAL: 1"=50'  
 VERTICAL: 1"=5'

MATCH LINE SHEET UC-22

PROPOSED MANHOLE #10  
 STA. 24+00.00 PR. SEWER Y9  
 TOP ELEV. 1260.00  
 INV. DATE 12/28/12

PROPOSED MANHOLE #11  
 STA. 25+00.00 PR. SEWER Y9  
 TOP ELEV. 1260.00  
 INV. DATE 12/28/12

PROPOSED MANHOLE #12  
 STA. 28+00.00 PR. SEWER Y9  
 TOP ELEV. 1260.00  
 INV. DATE 12/28/12

PROPOSED MANHOLE #13  
 STA. 29+00.00 PR. SEWER Y9  
 TOP ELEV. 1260.00  
 INV. DATE 12/28/12

PROPOSED MANHOLE #14  
 STA. 30+00.00 PR. SEWER Y9  
 TOP ELEV. 1260.00  
 INV. DATE 12/28/12

PROPOSED MANHOLE #15  
 STA. 31+00.00 PR. SEWER Y9  
 TOP ELEV. 1260.00  
 INV. DATE 12/28/12

PROPOSED MANHOLE #16  
 STA. 10+00.00 PR. SEWER L SHORT B  
 TOP ELEV. 1270.00  
 INV. DATE 12/28/12

PROPOSED MANHOLE #17  
 STA. 11+00.00 PR. SEWER L SHORT B  
 TOP ELEV. 1270.00  
 INV. DATE 12/28/12

PROPOSED MANHOLE #18  
 STA. 12+00.00 PR. SEWER L SHORT B  
 TOP ELEV. 1270.00  
 INV. DATE 12/28/12