



STATE OF NORTH CAROLINA  
DEPARTMENT OF TRANSPORTATION

PAT L. MCCRORY  
GOVERNOR

ANTHONY J. TATA  
SECRETARY

May 12, 2014

Wilmington Regulatory Field Office  
US Army Corps of Engineers  
69 Darlington Avenue  
Wilmington, North Carolina 28403

ATTN: Mr. Brad Shaver  
NCDOT Coordinator

Dear Sir:

Subject: **Request for Modification to Individual Section 404 and Section 401 Water Quality Certification** for the proposed construction of an extension of SR 1163 (Old Georgetown Rd) from SR 1184 (Ocean Isle Beach Rd) to NC 179 in Brunswick County, State Project 6.231023, TIP R-3432. Debit \$570.00 from WBS 35501.1.1

References: Section 404 and 401 Individual Permit Application requested October 3, 2012  
Section 404 Individual Permit issued February 26, 2013 (SAW-2007-00983)  
Section 401 Water Quality Certification issued January 4, 2013 (20120935)

The purpose of this modification request is to request an after-the-fact permit modification to the above referenced 404 Permit and 401 Water Quality Certification. Additional wetlands were cleared during overhead power line relocation that were not authorized by the previously issued permits. Sites 1 and 3 involved removal of forested vegetation; site 2, which is adjacent to site 1, was previously cleared within the existing power line right-of-way and only involved removal of herbaceous and shrub vegetation.

NCDOT is not proposing compensatory mitigation for the hand clearing due to the small extent of removal at each site.

### Regulatory Approvals

Section 404: We are hereby requesting the modifications described above for the USACE Individual 404 Permit signed February 26, 2013 (SAW-2007-00983), for the above-described activities.

MAILING ADDRESS:  
NC DEPARTMENT OF TRANSPORTATION  
PROJECT DEVELOPMENT AND ENVIRONMENTAL ANALYSIS UNIT  
1598 MAIL SERVICE CENTER  
RALEIGH NC 27699-1598

TELEPHONE: 919-707-6000  
FAX: 919-212-5785

WEBSITE: [NCDOT.GOV](http://NCDOT.GOV)

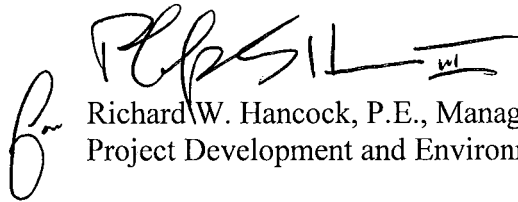
LOCATION:  
CENTURY CENTER, BUILDING B  
1020 BIRCH RIDGE DRIVE  
RALEIGH NC 27610

Section 401: We are hereby requesting a modification to the 401 Water Quality Certification from the NCDWQ issued January 4, 2013 (DWQ No. 20120935). In compliance with Section 143-215.3D(e) of the NCAC, we will provide \$570.00 to act as payment for processing the Section 401 permit modification.

A copy of this modification request and its distribution list will be posted on the NCDOT website at: <https://connect.ncdot.gov/resources/Environmental>

Thank you for your assistance with this project. If you have any questions or need additional information, please contact Tyler Stanton at 919-707-6156 or [tstanton@ncdot.gov](mailto:tstanton@ncdot.gov).

Sincerely,

A handwritten signature in black ink, appearing to read 'R. Hancock', with a horizontal line extending to the right and a small 'w' or similar mark at the end.

Richard W. Hancock, P.E., Manager  
Project Development and Environmental Analysis Unit

cc:

NCDOT Permit Application Standard Distribution List.

See Sheet 1-A For Index of Sheets  
See Sheet 1-B For Conventional Symbols

T.I.P. NO.	SHEET NO.
R-3432	UO-1

STATE OF NORTH CAROLINA  
DIVISION OF HIGHWAYS

**REVISED NEU PLANS  
BRUNSWICK COUNTY**

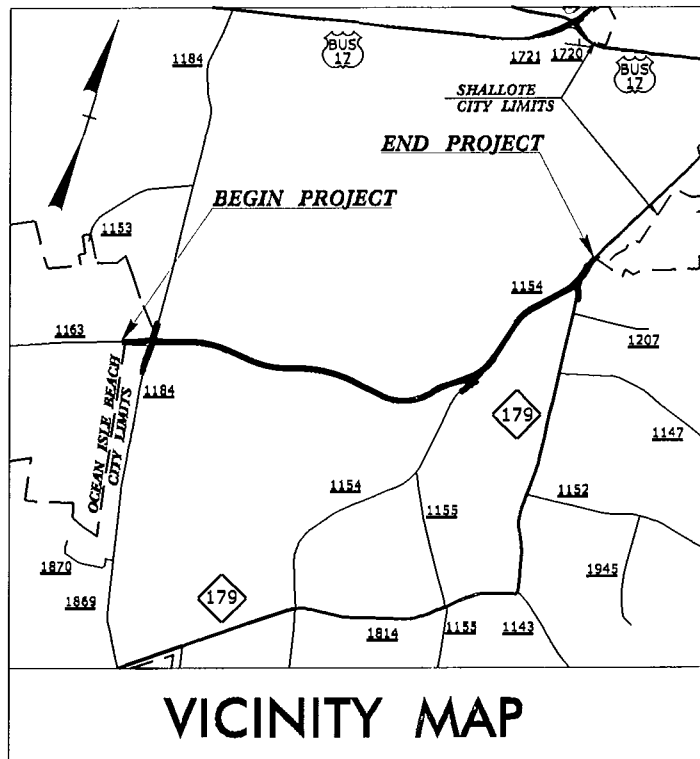
REVISED 04/24/2014

PRELIMINARY PLANS  
DO NOT USE FOR CONSTRUCTION

Utility Permit Drawing  
Sheet 16 of 28  
REVISED 7/24/14

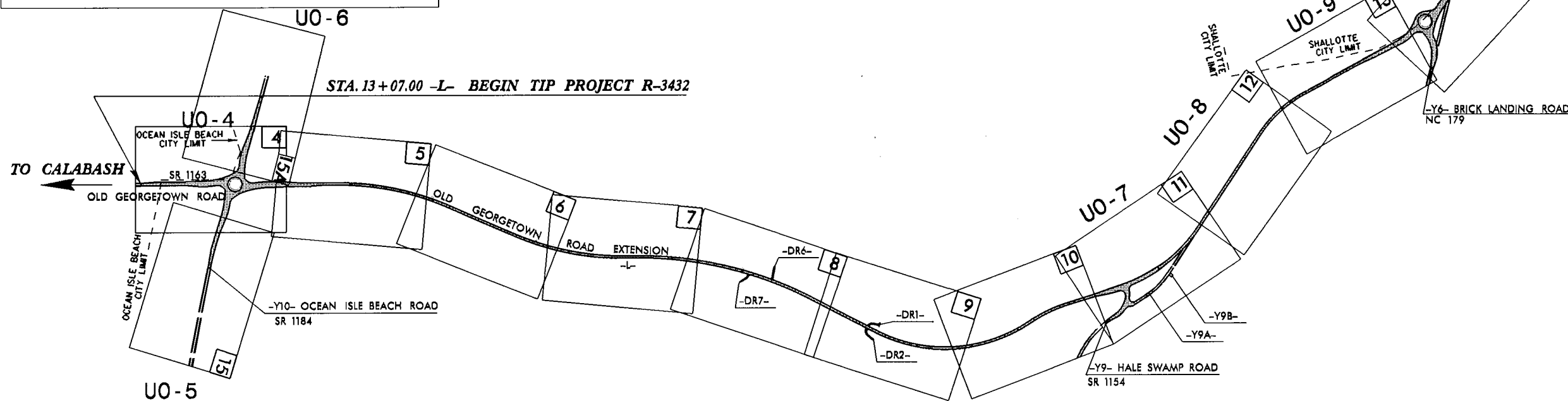
**LOCATION: SR 1163 (OLD GEORGETOWN ROAD EXTENSION)  
FROM SR 1184 (OCEAN ISLE BEACH ROAD) TO NC 179**

**TYPE OF WORK: RELOCATION OF POWER, TELEPHONE AND CABLE LINES**

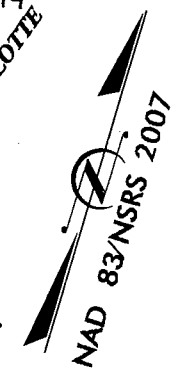


VICINITY MAP

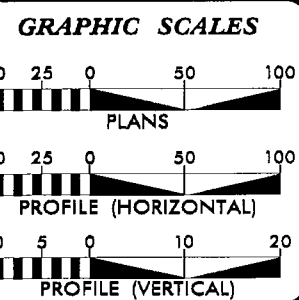
STA. 164+00.00 -L- END TIP PROJECT R-3432



STA. 13+07.00 -L- BEGIN TIP PROJECT R-3432

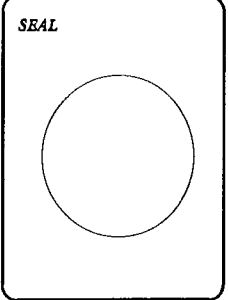


THIS IS A PARTIAL CONTROLLED-ACCESS PROJECT WITH ACCESS BEING LIMITED TO POINTS AS SHOWN ON THE PLANS.



INDEX OF SHEETS	
SHEET NO.	DESCRIPTION
UC-1	TITLE SHEET
UBO-6, 9, 10	UTILITIES BY OTHERS SHEETS

UTILITIES OWNERS ON PROJECT	
(1)	ATLANTIC TELEPHONE MEMBERSHIP CORPORATION
(2)	BRUNSWICK ELECTRIC MEMBERSHIP CORPORATION



PREPARED IN THE OFFICE OF:  
DIVISION OF HIGHWAYS  
UTILITIES UNIT  
UTILITIES ENGINEERING

1591 MAIL SERVICES CENTER  
RALEIGH NC 27699-1591  
PHONE (919) 707-6690  
FAX (919) 250-4151

**Roger Worthington, P.E.** UTILITIES SECTION ENGINEER  
**Corsy Bouquet, P.E.** UTILITIES SQUAD LEADER PROJECT ENGINEER  
**Mariho Hafes** UTILITIES PROJECT DESIGNER

TIP PROJECT: R-3432

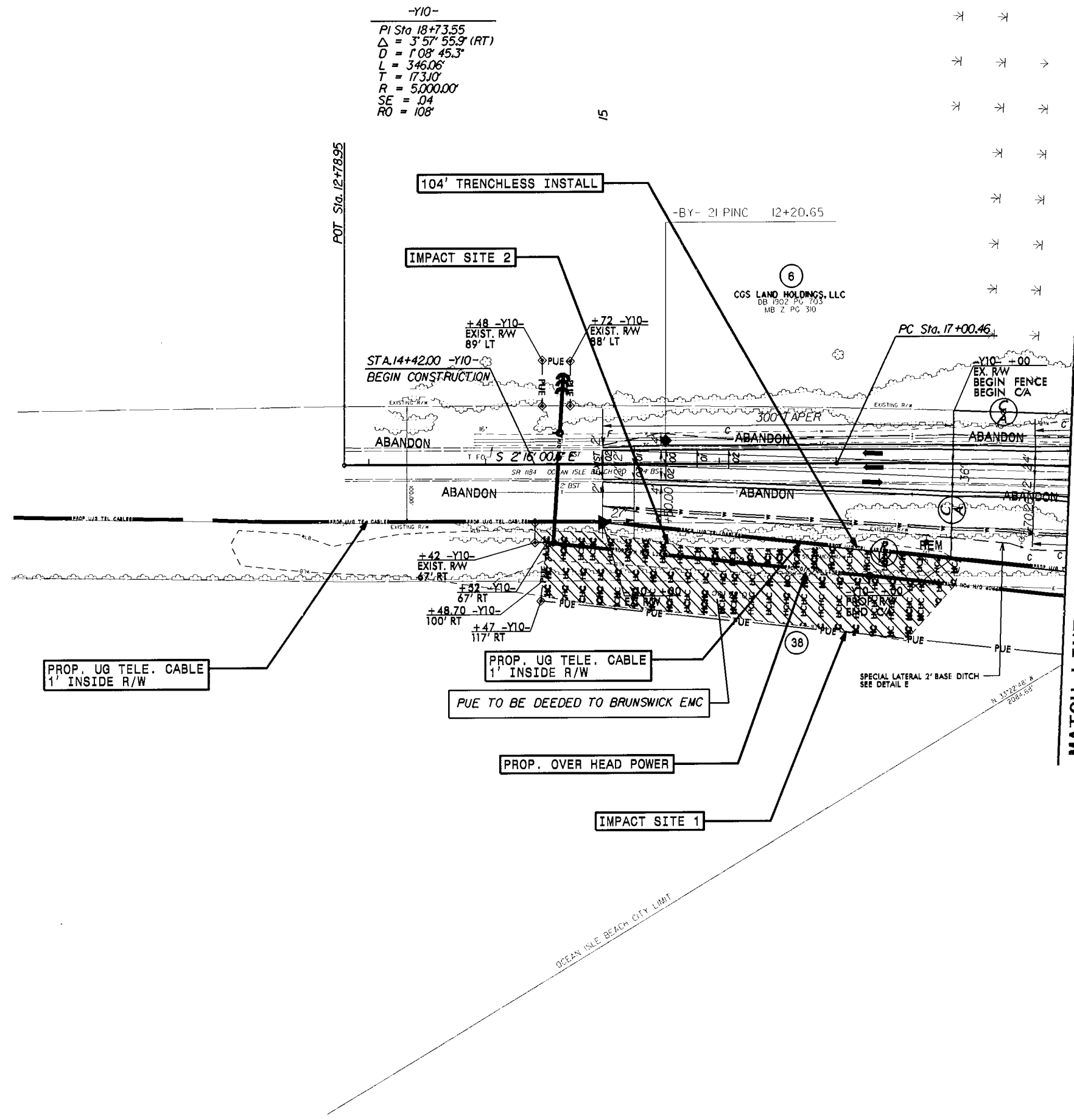
24-APR-2014 11:41  
C:\Users\jsh\Documents\Engineering\UBO\Proj\R-3432\ut\_tsh.UO1.psh.dgn  
USER: jsh

UTILITIES BY OTHERS

NOTE:  
ALL PROPOSED UTILITY WORK  
SHOWN ON THIS SHEET WILL  
BE DONE BY OTHERS

Utility Permit Drawing  
Sheet 19 of 28  
REVISED 4/24/14

-Y10-  
PI Sta 18+73.55  
 $\Delta = 3^{\circ} 57' 55.9" (RT)$   
 $D = 1^{\circ} 08' 45.3"$   
 $L = 346.06'$   
 $T = 173.10'$   
 $R = 5,000.00'$   
 $SE = .04$   
 $RO = 108'$



MATCH LINE -Y10- STA. 19+00.00 SEE SHEET UO-4

5/14/14  
V:\24-APR-2014 10:36 P:\03432-01-01\03432-01-01.dwg  
V:\24-APR-2014 10:36 P:\03432-01-01\03432-01-01.dwg

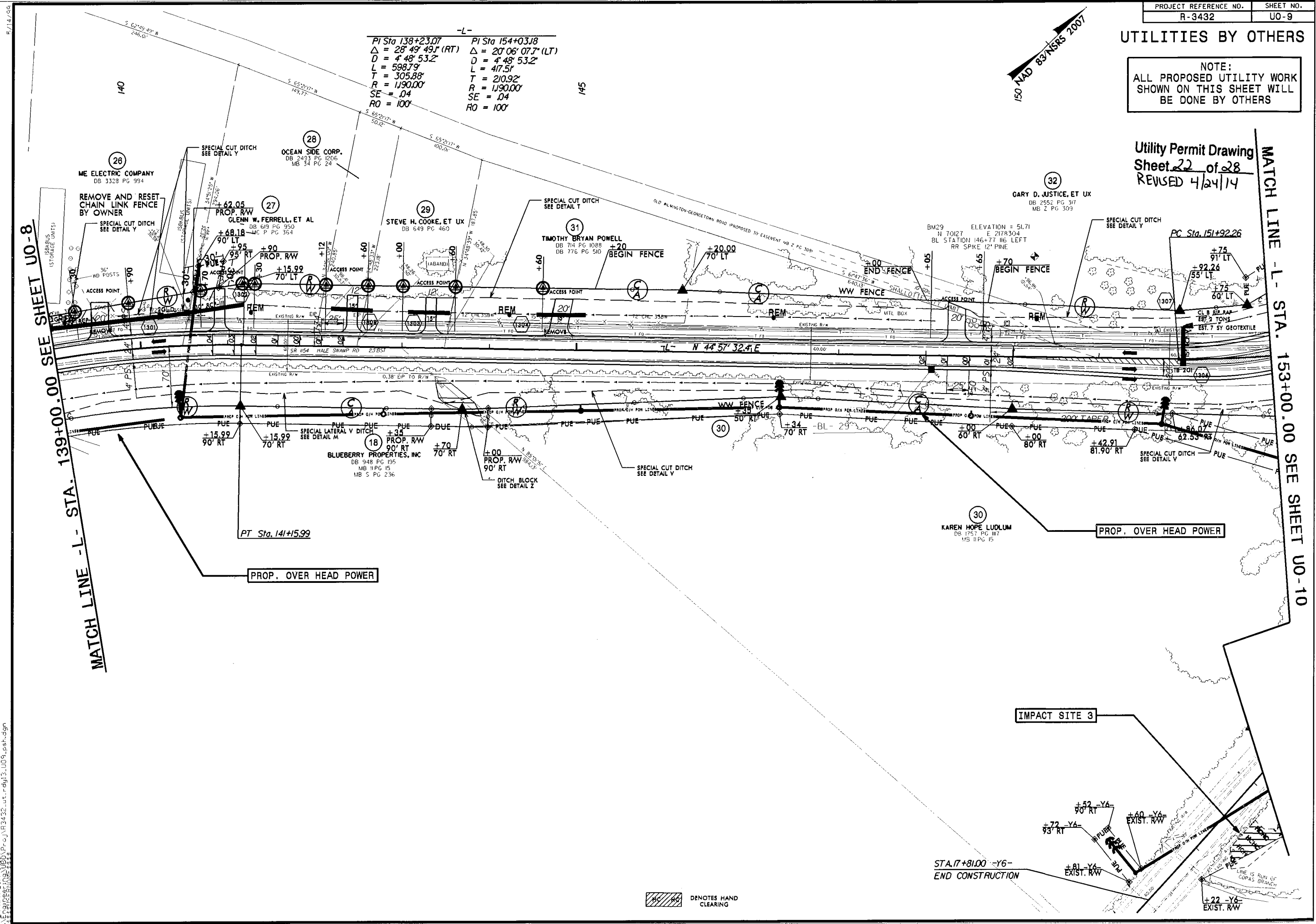
### UTILITIES BY OTHERS

NOTE:  
ALL PROPOSED UTILITY WORK  
SHOWN ON THIS SHEET WILL  
BE DONE BY OTHERS

Utility Permit Drawing  
Sheet 22 of 28  
REVISED 4/24/14

-L-  
PI Sta 138+23.07 PI Sta 154+03.18  
Δ = 28° 49' 49" (RT) Δ = 20° 06' 07.7" (LT)  
D = 4' 48" 53.2" D = 4' 48" 53.2"  
L = 598.79' L = 417.5'  
T = 305.88' T = 210.92'  
R = 1190.00' R = 1190.00'  
SE = .04 SE = .04  
RO = 100' RO = 100'

150 NAD 83 NERS 2007



MATCH LINE -L- STA. 139+00.00 SEE SHEET UO-8

MATCH LINE -L- STA. 153+00.00 SEE SHEET UO-10

PT Sta. 141+15.99

30  
KAREN HOPE LUDLUM  
DB 1751 PG 117  
MB 11 PG 15

IMPACT SITE 3

STA. 17+81.00 -Y6-  
END CONSTRUCTION

DENOTES HAND CLEARING

24-APR-2014 09:37  
 S:\PROJECTS\2014\UO9\UO9-esh.dgn  
 F:\11\96

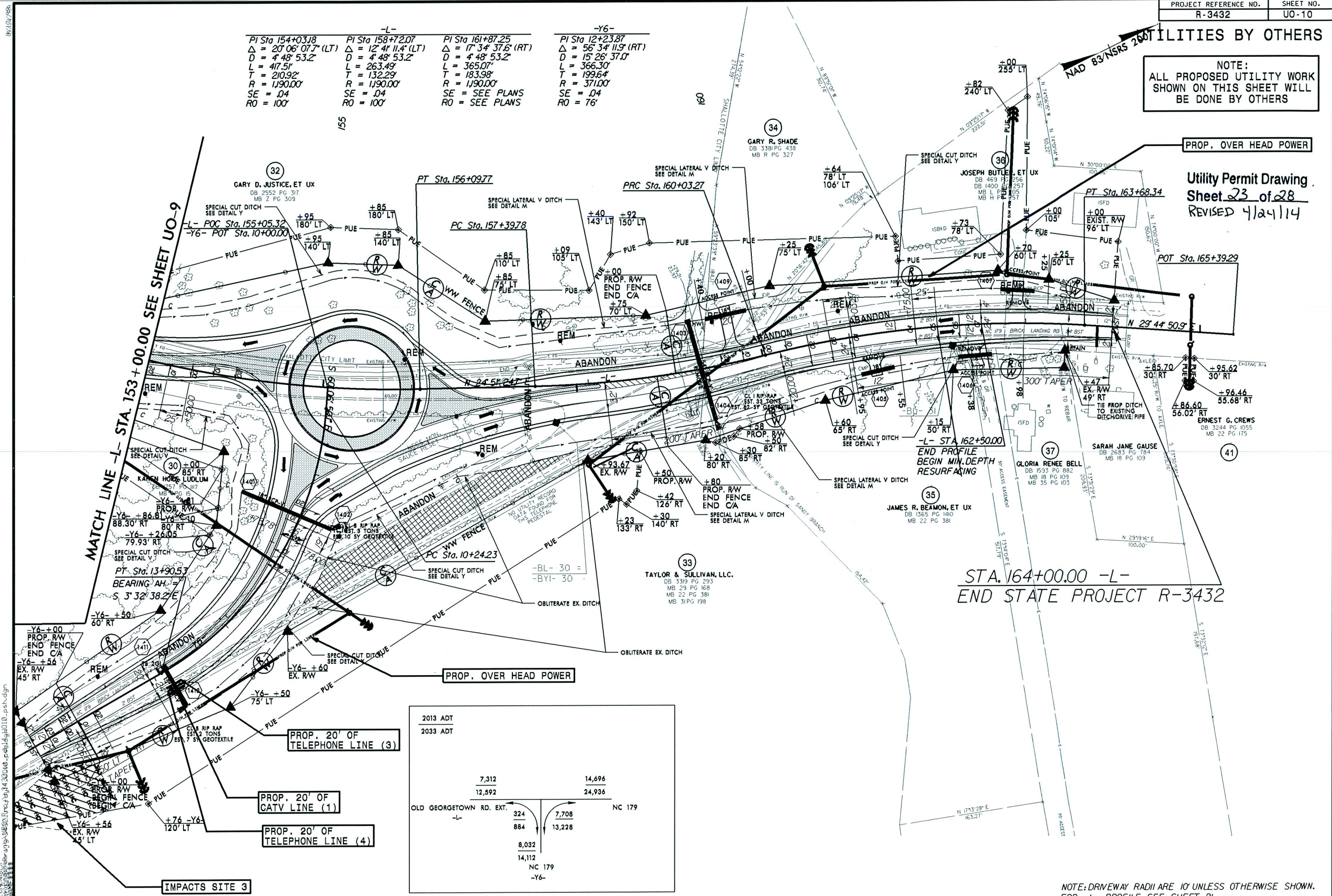
UTILITIES BY OTHERS

NOTE:  
ALL PROPOSED UTILITY WORK  
SHOWN ON THIS SHEET WILL  
BE DONE BY OTHERS

PROP. OVER HEAD POWER

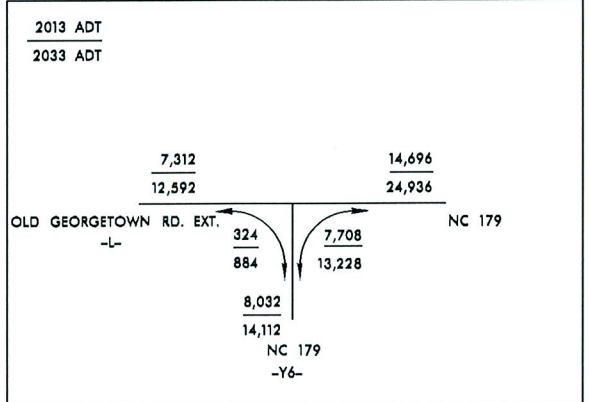
Utility Permit Drawing  
Sheet 23 of 28  
REVISED 4/24/14

-L-			-Y6-		
PI Sta 154+03.18	PI Sta 158+72.07	PI Sta 161+87.25	PI Sta 12+23.87		
$\Delta = 20^{\circ} 06' 07.7" (LT)$	$\Delta = 12^{\circ} 41' 11.4" (LT)$	$\Delta = 17^{\circ} 34' 37.6" (RT)$	$\Delta = 56^{\circ} 34' 11.9" (RT)$		
D = 448' 53.2"	D = 448' 53.2"	D = 448' 53.2"	D = 1526' 37.0"		
L = 417.5'	L = 263.49'	L = 365.07'	L = 366.30'		
T = 210.92'	T = 132.29'	T = 183.98'	T = 199.64'		
R = 1190.00'	R = 1190.00'	R = 1190.00'	R = 371.00'		
SE = .04	SE = .04	SE = SEE PLANS	SE = .04		
RO = 100'	RO = 100'	RO = SEE PLANS	RO = 76'		



MATCH LINE -L- STA. 153+00.00 SEE SHEET UO-9

STA. 164+00.00 -L-  
END STATE PROJECT R-3432



TAYLOR & SULLIVAN, LLC.  
DB 3319 PG 293

IMPACTS SITE 3

NOTE: DRIVEWAY RADII ARE 10' UNLESS OTHERWISE SHOWN.  
FOR -L- PROFILE SEE SHEET 21  
FOR -Y6- PROFILE SEE SHEET 22  
SEE SHEET 2-D FOR ROUNDABOUT DETAIL

Site No.	Station (From/To)	Structure Size / Type	WETLAND IMPACTS					SURFACE WATER IMPACTS				
			Permanent Fill In Wetlands (ac)	Temp. Fill In Wetlands (ac)	Excavation in Wetlands (ac)	Mechanized Clearing in Wetlands (ac)	Hand Clearing in Wetlands (ac)	Permanent SW impacts (ac)	Temp. SW impacts (ac)	Existing Channel Impacts Permanent (ft)	Existing Channel Impacts Temp. (ft)	Natural Stream Design (ft)
1	Y10 14+53 to 18+08	Overhead Power					0.32					
2	Y1014+51 to 18+04	Overhead Power					0.18					
3	Y6 15+04 to 16+86	Overhead Power					0.16					
TOTALS:							0.66					

Note:

Revised 4/24/14

Utility Permit Drawing  
 Sheet 28 of 28  
 REVISED 4/24/14

NC DEPARTMENT OF TRANSPORTATION  
 DIVISION OF HIGHWAYS

BRUNSWICK COUNTY  
 WBS - 35501.1.1 (R-3432)

SHEET 1 OF 1 4/24/2014

ATN Revised 3/31/05