



STATE OF NORTH CAROLINA  
DEPARTMENT OF TRANSPORTATION

BEVERLY EAVES PERDUE  
GOVERNOR

EUGENE A. CONTI, JR.  
SECRETARY

July 16, 2009

U. S. Army Corps of Engineers  
Regulatory Field Office  
Post Office Box 1000  
Washington, NC 27889-1000

Attention: Mr. William Wescott  
NCDOT Coordinator

Dear Sir:

Subject: **Modification Request for the Section 404 Individual Permit, Section 401 Water Quality Certification, and the Neuse River Riparian Buffer Authorization** for the US 17 New Bern Bypass from SR 1330 near the Jones-Craven County Line to SR 1438 near Vanceboro, Craven County. State Project No. 6179001T. Debit \$570 from WBS 34414.1.1, TIP No. R-2301 A & B.

References: Section 404 Individual Permit issued November 7, 2008; USACE Permit No. SAW-2008-02206  
Section 401 Water Quality Certification and Tar-Pamlico River Buffer Authorization issued September 22, 2008; NCDWQ Project No. 003757

Please see the enclosed revised buffer drawings for Section A of the above referenced project. During the preconstruction meeting held on July 9, 2009, it was noted additional impacts to riparian buffers are needed for project construction. The revised proposed total impacts for the project is 76,025 ft<sup>2</sup>. The revised mitigable impacts have been submitted to EEP for compensatory mitigation. A copy of the revised EEP acceptance letter is forthcoming.

In addition to the revised buffer impacts, 400 ft<sup>2</sup> of mechanized clearing will be required for the installation of bents for the temporary work bridge at site 1B (Sta. 18+03 to 18+36).

### Regulatory Approvals

Section 404 Permit: NCDOT requests that the U.S. Army Corps of Engineers (USACE) issue a modification for the Individual 404 Permit issued November 7, 2008, as required for the above-described activities.

Section 401 Permit: NCDOT requests that the NCDWQ issue a modification for the Individual 401 Certification issued September 22, 2008, as required for the above-described activities. In accordance with 15A NCAC 2H .0501(a) we are providing five copies of this modification request to the North Carolina Department of Environmental and Natural Resources for their approval and \$570 to act as payment for processing the permit modification (see subject line).

Neuse River Riparian Buffer Authorization: NCDOT requests that the NCDWQ issue a modification for the Neuse River Riparian Buffer Authorization issued September 22, 2008, as required for the above-described activities.

CAMA: The N. C. Division of Coastal Management (NCDQM) conducted a CAMA Federal Consistency Review for R-2301 A. Modification to the Consistency Concurrence is not being requested.

Thank you for your assistance with this project. If you have any questions or need additional information, please contact Tyler Stanton at tstanton@ncdot.gov or (919) 431-6748.

Sincerely,



Gregory J. Thorpe, Ph.D., Environmental Management Director  
Project Development and Environmental Analysis Branch

Cc:

W/attachment

Mr. Brian Wrenn, NCDWQ (5 Copies)

W/o attachment (see website for attachments)

Mr. William Wescott, USACE

Mr. Steve Sollod, NCDQM

Dr. David Chang, P.E., Hydraulics

Mr. Greg Perfetti, P.E., Structure Design

Mr. Victor Barbour, P.E., Project Services Unit

Mr. Mark Staley, Roadside Environmental

Mr. C. E. Lassiter, P.E., Div. 2 Engineer

Mr. Jay Johnson, Div. 2 Environmental Officer

Mr. Scott McLendon, USACE, Wilmington

Mr. Gary Jordan, USFWS

Mr. Travis Wilson, NCWRC

Mr. Ron Sechler, NMFS

Ms. Anne Deaton, NCDMF

Mr. Jay Bennett, P.E., Roadway Design

Mr. Majed Alghandour, P. E., Programming and TIP

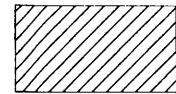
Mr. Art McMillan, P.E., Highway Design

Mr. Mark Pierce, PE, PDEA

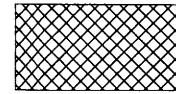


**BUFFER PERMIT  
SITE 1**

**LEGEND**



MITIGABLE IMPACTS ZONE 2



MITIGABLE IMPACTS ZONE 1

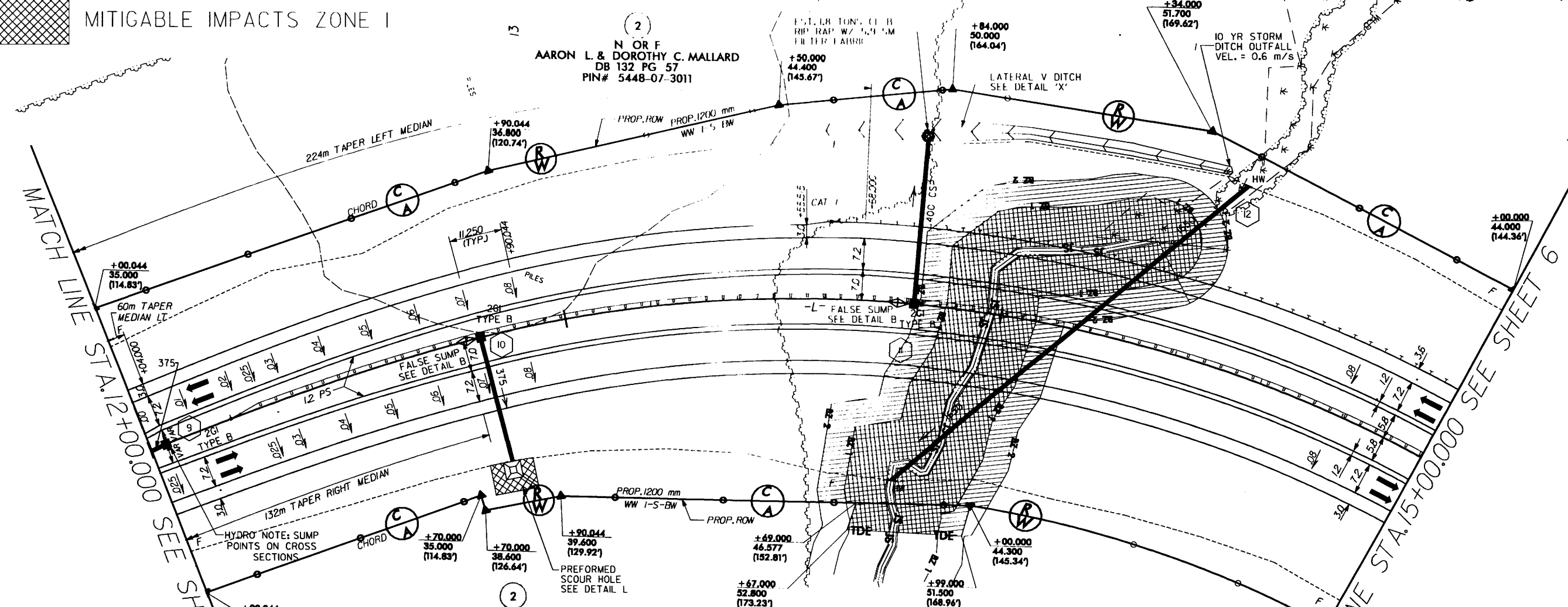
PROJECT REFERENCE NO. R-2301A  
SHEET NO. 5  
R/W SHEET NO. 5  
ROADWAY DESIGN ENGINEER  
HYDRAULICS ENGINEER

PRELIMINARY PLANS  
DO NOT USE FOR CONSTRUCTION

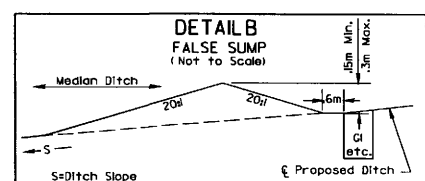
CONST. REV.  
R/W REV.

Prepared by  
**URS**  
URS Corporation - North Carolina  
1600 Parkcenter Park Drive  
Raleigh, North Carolina 27660  
TELEPHONE: (919) 481-1100 FAX: (919) 481-1415  
COPYRIGHT © 2008, URS CORPORATION, INC.

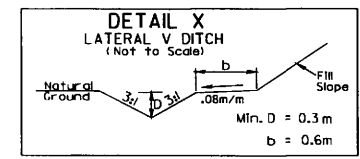
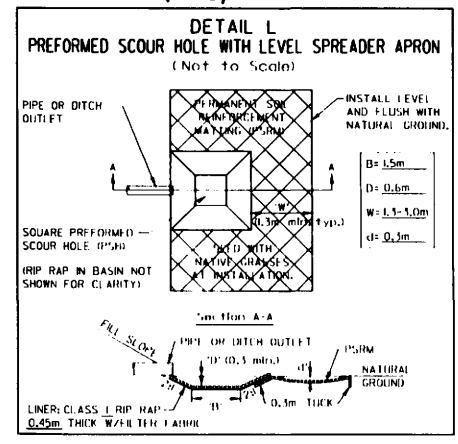
Buffer Drawing  
Sheet 5 of 10  
REVISED 7/15/09



N OR F  
AARON L. & DOROTHY C. MALLARD  
DB 132 PG 57  
PIN# 5448-07-3011



-L- 13+76 M  
-L- 12+77 M



-L- 13+60 TO 14+40 LT

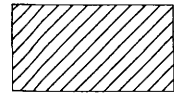
REVISIONS

MATCH LINE STA. 12+00.000 SEE SHEET 4

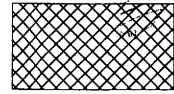
MATCH LINE STA. 15+00.000 SEE SHEET 6

**BUFFER PERMIT  
SITE 1**

**LEGEND**



MITIGABLE IMPACTS ZONE 2



MITIGABLE IMPACTS ZONE 1

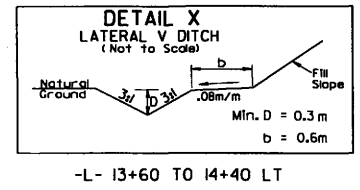
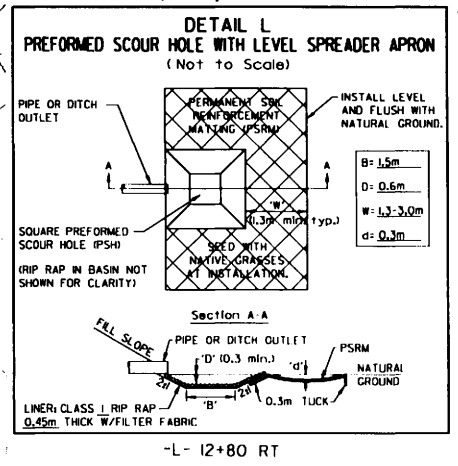
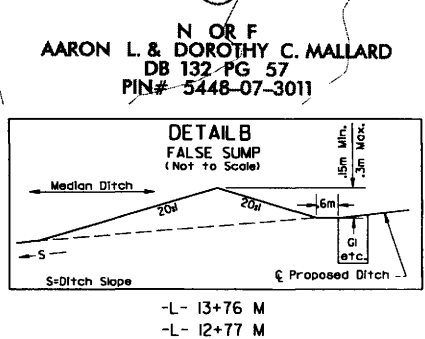
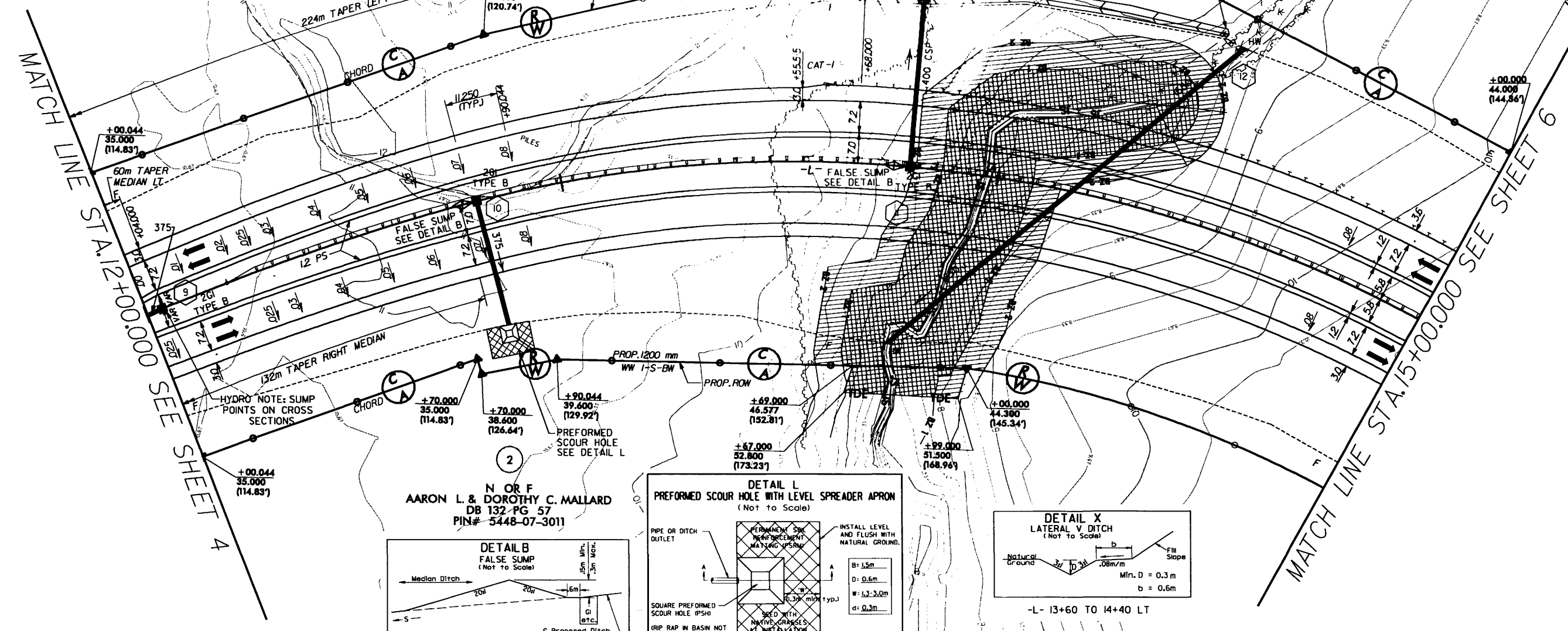
NOTE: FOR 1. PROFILE SEE SHEET 43

Prepared by  
**URS**  
URS Corporation - North Carolina  
1600 Parkwest Park Drive  
Merrillville, North Carolina 27560  
TELEPHONE (919) 481-1100 FAX (919) 481-1410  
COPYRIGHT © 2008, URS CORPORATION, INC.



PROJECT REFERENCE NO. R-2301A	SHEET NO. 5
R/W SHEET NO. 5	
ROADWAY DESIGN ENGINEER	HYDRAULICS ENGINEER
<b>PRELIMINARY PLANS</b> DO NOT USE FOR CONSTRUCTION	
CONST. REV.	
R/W REV.	

Buffer Drawing  
Sheet 6 of 10  
REVISED 7/15/09

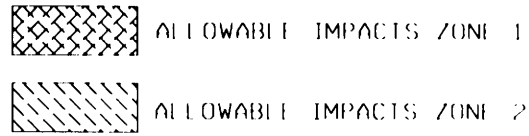


REVISIONS

MATCH LINE STA. 12+00.000 SEE SHEET 4

MATCH LINE STA. 15+00.000 SEE SHEET 6

**BUFFER PERMIT**  
SITE 2



NOTE: FOR L PROFILE SEE SHEET 43-44

Prepared by  
**URS**  
URS Corporation - North Carolina  
1600 Parkcenter Park Drive  
Morrisville, North Carolina 27560  
TELEPHONE (919) 461-1100 FAX (919) 461-1410  
COPYRIGHT © 2008, URS CORPORATION, INC.

**METRIC**

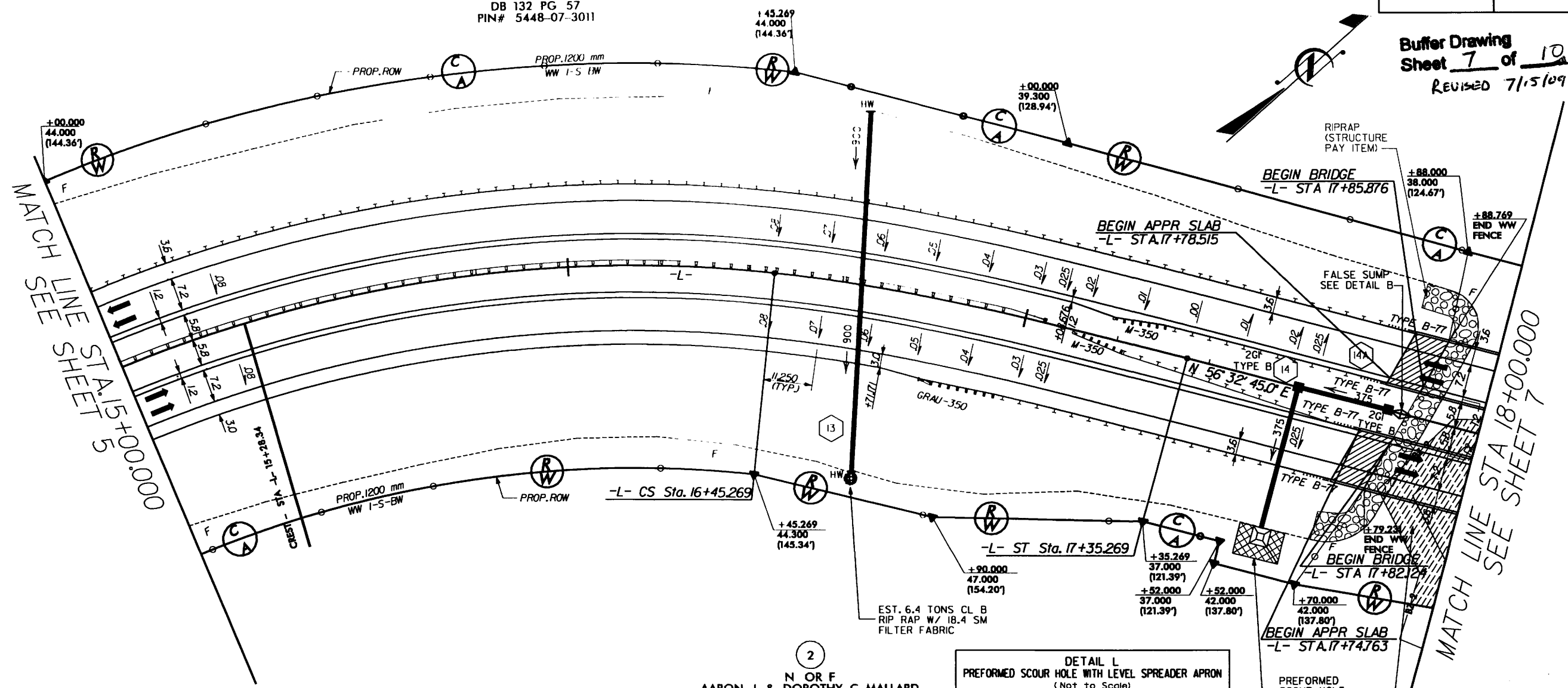
5 0 10

CONST. REV.  
R./W. REV.

PROJECT REFERENCE NO. R-2301A	SHEET NO. 6
R./W. SHEET NO. 6	HYDRAULICS ENGINEER
ROADWAY DESIGN ENGINEER	PRELIMINARY PLANS DO NOT USE FOR CONSTRUCTION

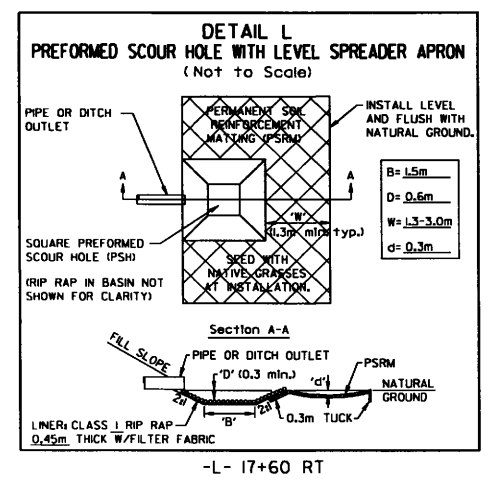
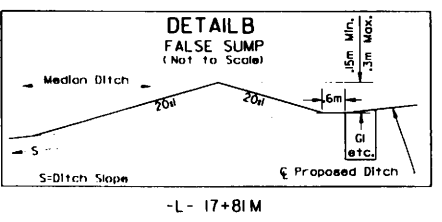
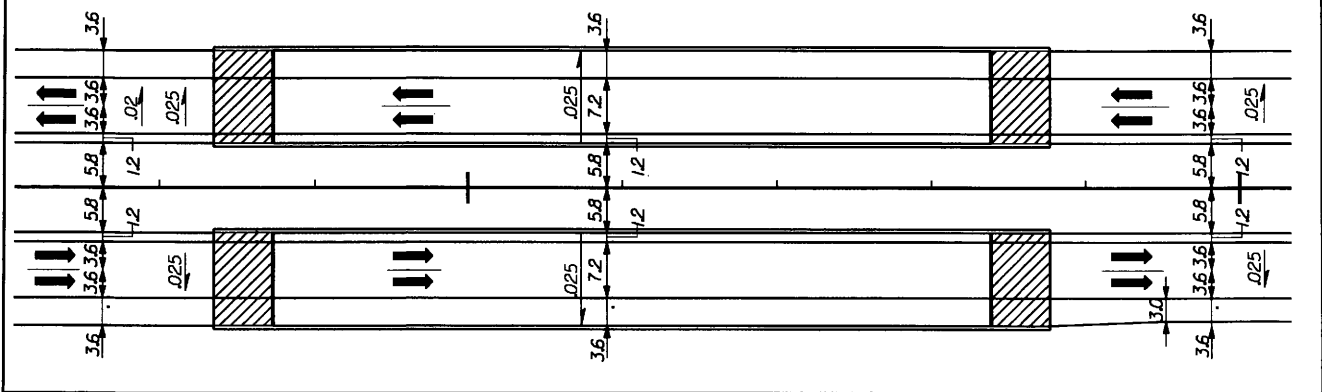
(2)  
N OR F  
AARON L. & DOROTHY C. MALLARD  
DB 132 PG 57  
PIN# 5448-07-3011

Buffer Drawing  
Sheet 7 of 10  
REVISED 7/15/09



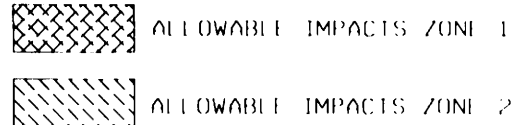
(2)  
N OR F  
AARON L. & DOROTHY C. MALLARD  
DB 132 PG 57  
PIN# 5448-07-3011

SKETCH SHOWING ROADWAY APPROACHING BRIDGE AT US 17 BYPASS (-L-) OVER DEEP GULLY



BUFFER IMPACTS

**BUFFER PERMIT**  
SITE 2



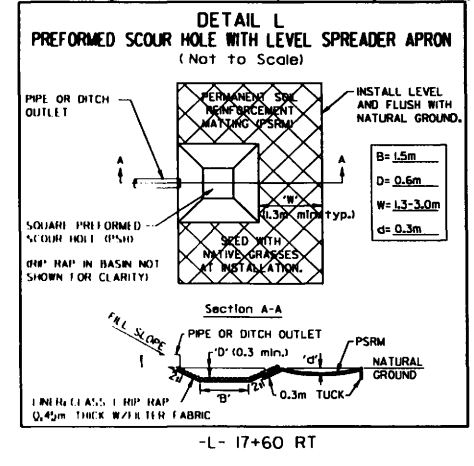
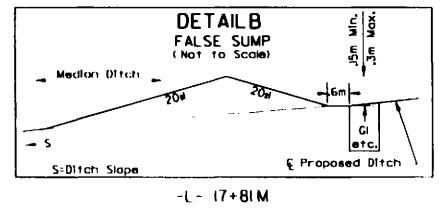
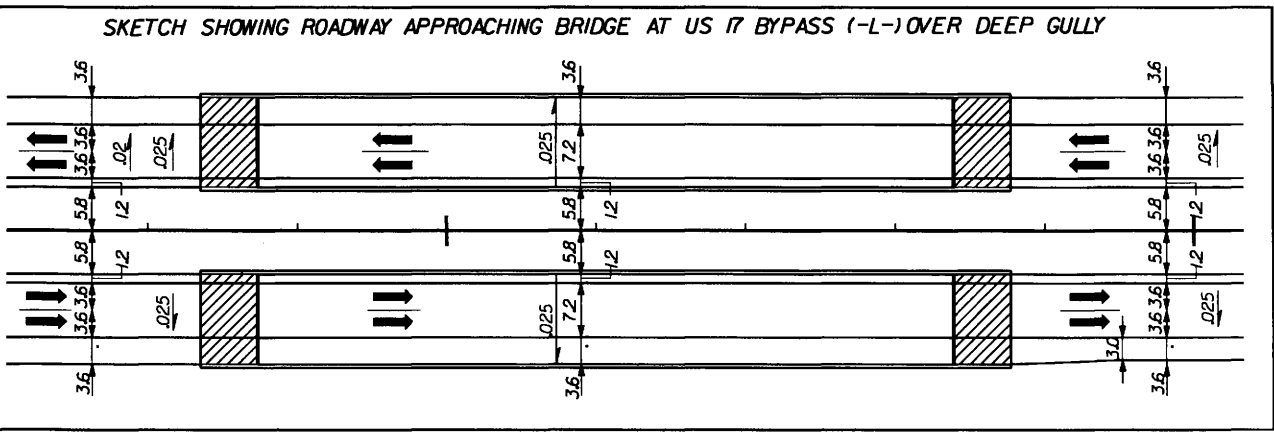
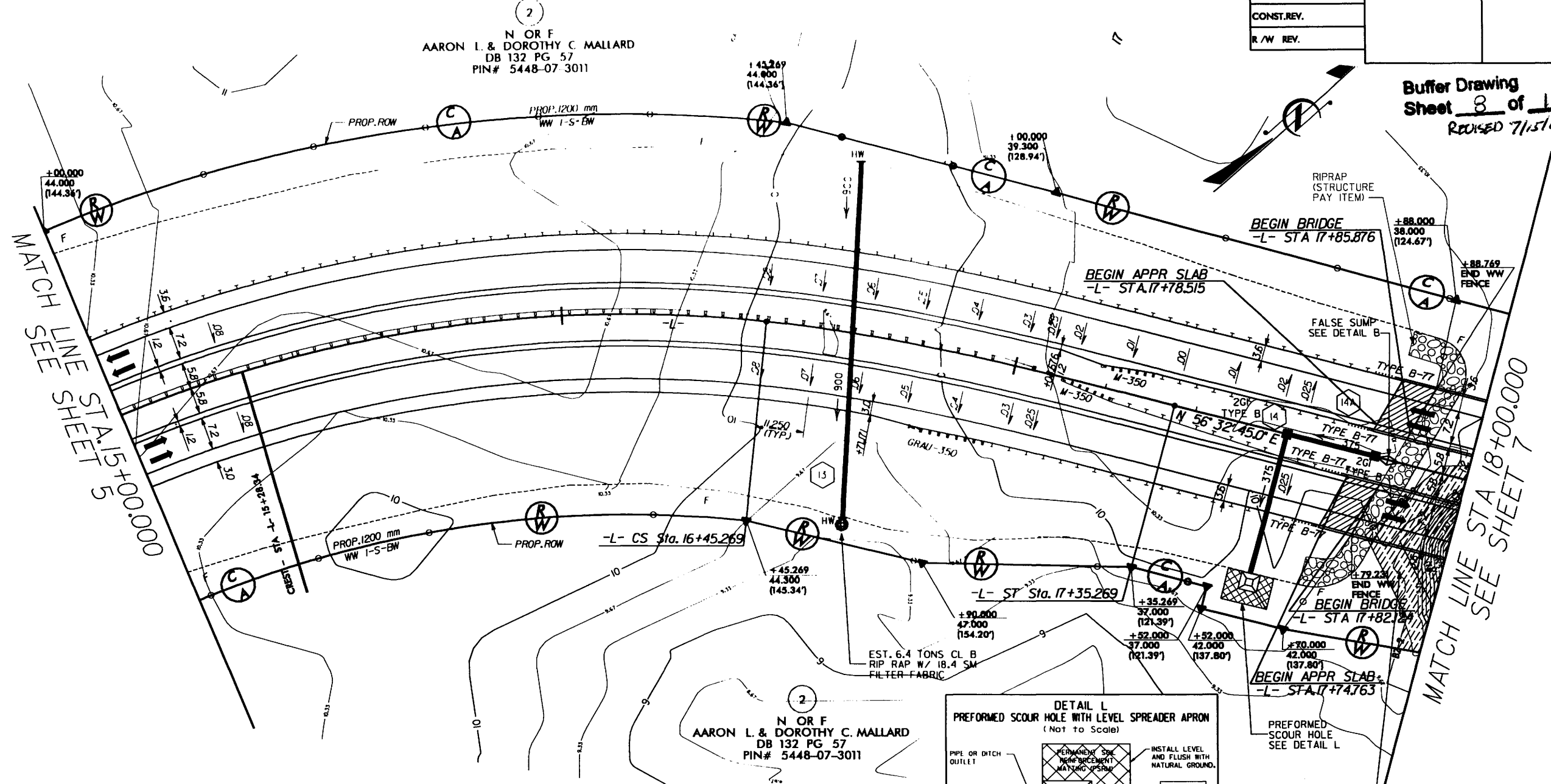
NOT FOR CONSTRUCTION SHEET 45 44

Prepared by  
**URS**  
URS Corporation - North Carolina  
1600 Parkover Park Drive  
Morrisville, North Carolina 27560  
TELEPHONE (919) 461-1100 FAX (919) 461-1418  
COPYRIGHT © 2008, URS CORPORATION, INC.

**METRIC**  
5 0 10  
CONST. REV.  
R/W REV.

PROJECT REFERENCE NO. R-2301A	SHEET NO. 6
R/W SHEET NO. 6	HYDRAULICS ENGINEER
ROADWAY DESIGN ENGINEER	PRELIMINARY PLANS DO NOT USE FOR CONSTRUCTION

Buffer Drawing  
Sheet 8 of 10  
REVISED 7/15/09



BUFFER IMPACTS

N OR F  
AARON L. & DOROTHY C. MALLARD  
DB 132 PG 57  
PIN# 5448-07-3011

MATCH LINE SEE SHEET 7  
STA 18+00.000

MATCH LINE SEE SHEET 5  
STA 15+00.000

**BUFFER PERMIT**

**SITE 2**

ALLOWABLE IMPACTS ZONE 1  
ALLOWABLE IMPACTS ZONE 2

NOT FOR CONSTRUCTION SEE SHEET 4A FOR BUFFER PERMIT SHEET 6

Prepared by  
**URS**  
URS Corporation - North Carolina  
1600 Parkcenter Park Drive  
Raleigh, North Carolina 27660  
TEL: 919.487.1100 FAX: 919.487.1419  
CORPORATE © 2008 URS CORPORATION, INC.

**METRIC**

5 0 10

CONST. REV.  
R/W REV.

PROJECT REFERENCE NO. R-2301A	SHEET NO. 7
R/W SHEET NO. 7	HYDRAULICS ENGINEER
ROADWAY DESIGN ENGINEER	PRELIMINARY PLANS DO NOT USE FOR CONSTRUCTION

Buffer Drawing  
Sheet 9 of 10  
REVISED 7/15/09

2  
N OR F  
AARON L. & DOROTHY C. MALLARD  
DB 132 PG 57  
PIN# 5448-07-3011

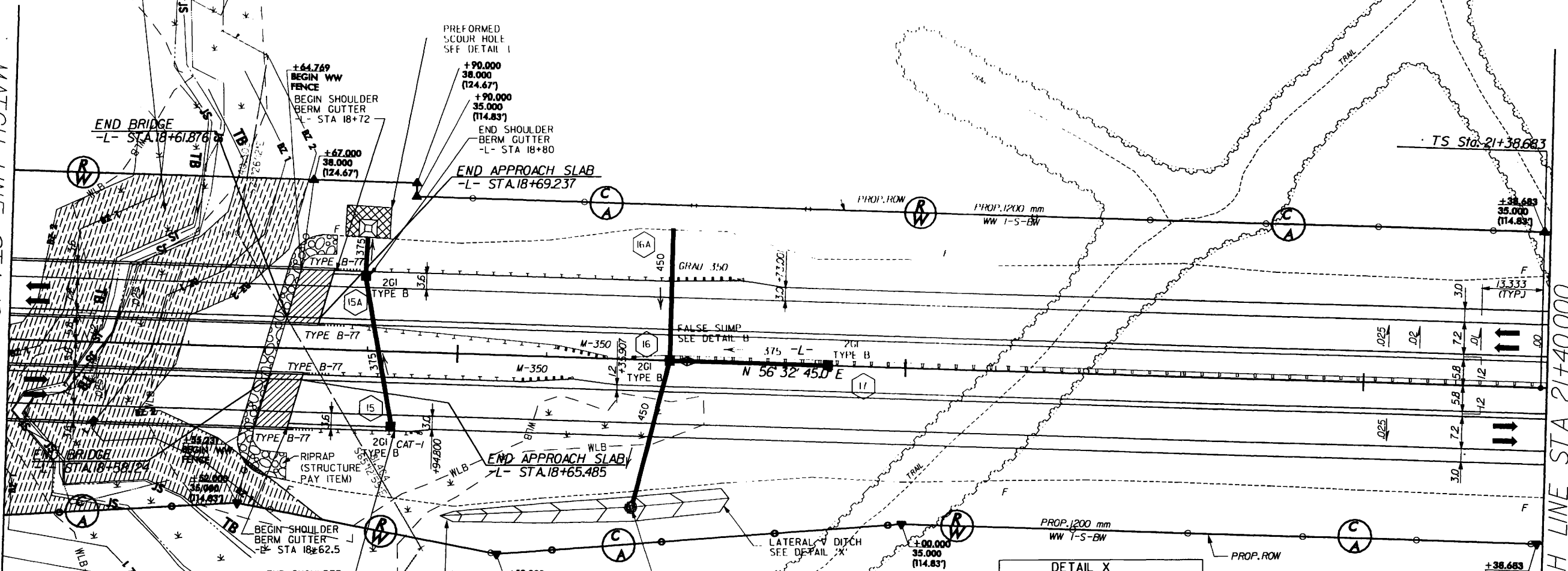
4A  
N OR F  
WEYERHAEUSER COMPANY  
PIN# 8 200 010

3  
N OR F  
MACON F. & JOYCE F. DUNCAN  
DB 525 PG 33  
PLAT CAB. F. SL. 162-H  
PIN# 8-200-009

BUFFER IMPACTS

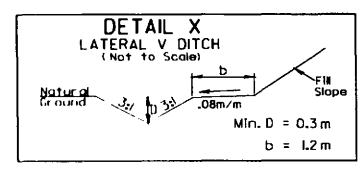
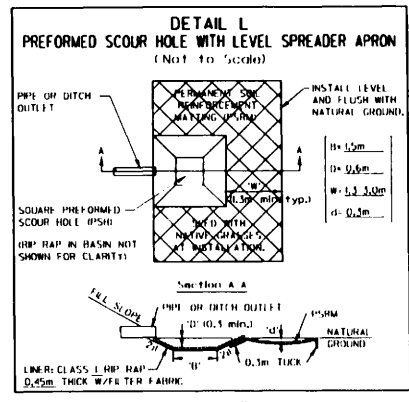
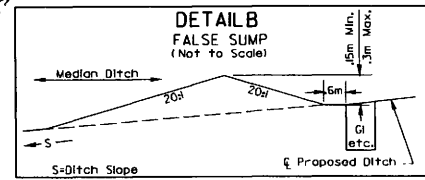
MATCH LINE STA 18+00.000 SEE SHEET 6

MATCH LINE STA 21+40.000 SEE SHEET 8



2  
N OR F  
AARON L. & DOROTHY C. MALLARD  
DB 132 PG 57  
PIN# 5448-07-3011

3  
N OR F  
MACON F. & JOYCE F. DUNCAN  
DB 525 PG 33  
PLAT CAB. F. SL. 162-H  
PIN# 8-200-009



**CURVE DATA -L-**

PIs Sta 21+92.021	PI Sta 22+42.954	PIs Sta 22+93.886
θs = 2°17'30.6"	Δ = 2°46'50.4" (RT)	θs = 2°17'30.6"
Ls = 80.000	L = 48.532	Ls = 80.000
LT = 53.338	T = 24.271	LT = 53.338
ST = 26.671	R = 1,000.000	ST = 26.671
	SE = 6.0%	



# BUFFER PERMIT

SITE 2

NOTE: FOR 1. PROFILE SEE SHEET 44  
FOR BRIDGE SKETCH SEE SHEET 6

Prepared by  
**URS**  
URS Corporation - North Carolina  
1600 Parkwater Park Drive  
Morrisville, North Carolina 27560  
TELEPHONE (919) 461-1100 FAX (919) 461-1410  
COPYRIGHT © 2005, URS CORP. ALL RIGHTS RESERVED

**METRIC**  
5 0 10  
CONST. REV.  
R/W REV.

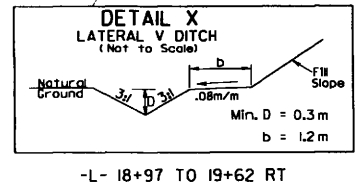
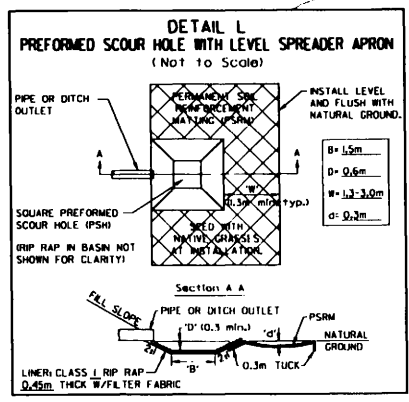
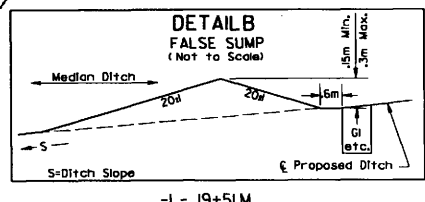
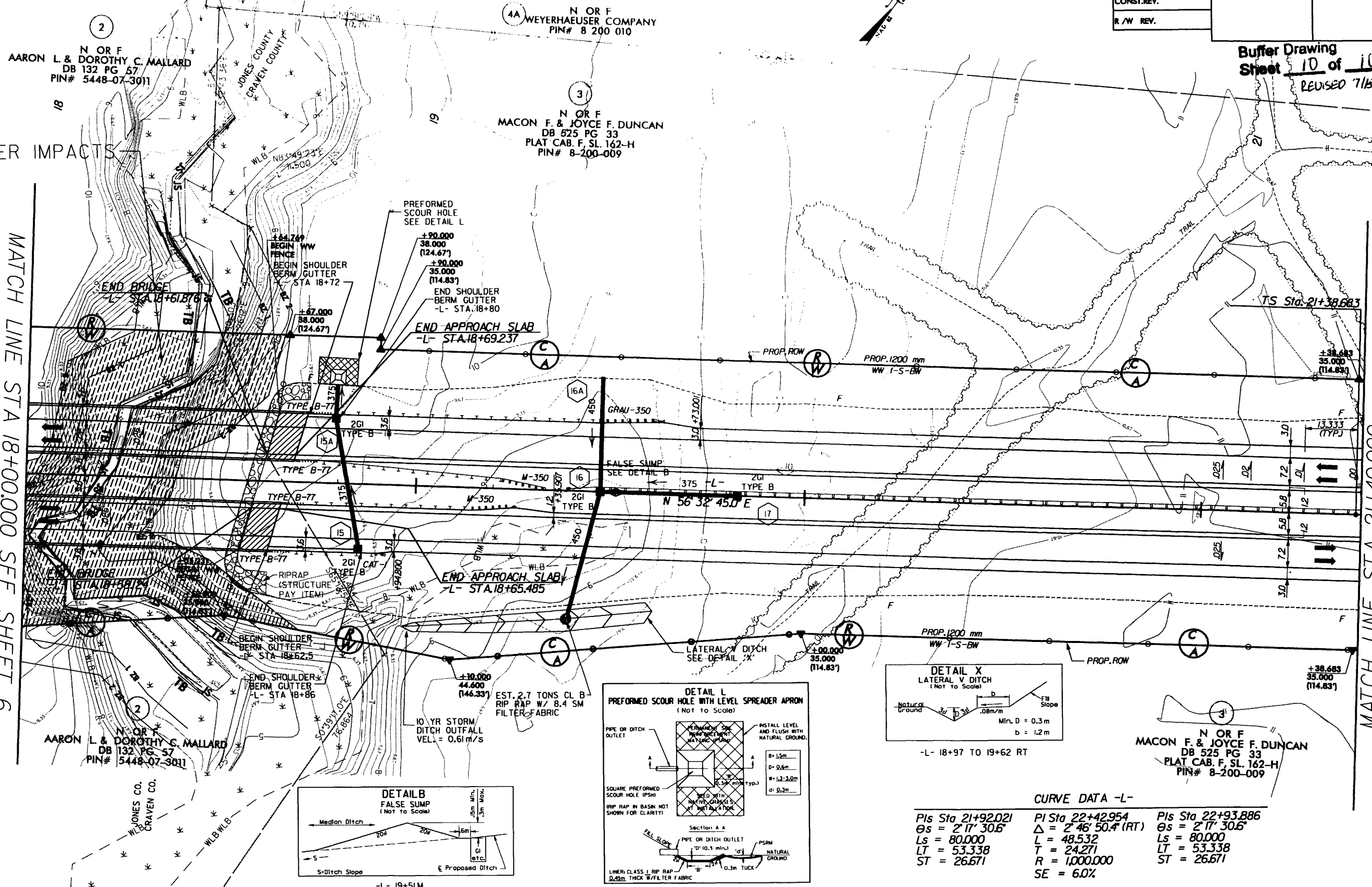
PROJECT REFERENCE NO. R-2301A	SHEET NO. 7
R/W SHEET NO. 7	ROADWAY DESIGN ENGINEER
HYDRAULICS ENGINEER	
<b>PRELIMINARY PLANS</b> DO NOT USE FOR CONSTRUCTION	

Buffer Drawing  
Sheet 10 of 10  
REVISED 7/15/09

BUFFER IMPACTS

MATCH LINE STA 18+00.000 SEE SHEET 6

MATCH LINE STA 21+40.000  
SEE SHEET 8



**CURVE DATA -L-**

PIs Sta 21+92.021	PI Sta 22+42.954	PIs Sta 22+93.886
$\theta_s = 2' 17'' 30.6''$	$\Delta = 2' 46'' 50.4'' (RT)$	$\theta_s = 2' 17'' 30.6''$
Ls = 80.000	L = 48.532	Ls = 80.000
LT = 53.338	T = 24.271	LT = 53.338
ST = 26.671	R = 1,000.000	ST = 26.671
	SE = 6.0%	