



STATE OF NORTH CAROLINA
DEPARTMENT OF TRANSPORTATION

MICHAEL F. EASLEY
GOVERNOR

LYNDO TIPPETT
SECRETARY

December 17, 2007

Mr. Brian Wrenn
NC Division of Water Quality
401 Wetlands Certification Unit
1650 Mail Service Center
Raleigh, NC 27699-1650

SUBJECT: WQC No. 3704 request for T.I.P. No. B-4063, Chatham County.

REFERENCE: NW 23/33 permit application, dated October 1, 2007

Dear Mr. Wrenn:

An October 1, 2007 permit application was made by the NCDOT for Section 404 Nationwide permits 23 & 33. Since all general conditions are being adhered to, no written concurrence from the DWQ was requested. However, the USACE issued a GP 31, necessitating written concurrence for a Section 401 WQC No. 3704.

Please process NCDOT's permit application for this project for a WQC No. 3704 from the DWQ (debit \$240.00 for a Minor Water Quality Certification from WBS Element #33427.1.1). All actions proposed in the October application are still valid with the exception of Site 1 in the permit application. Site 1 was modified after the permit application was sent to the USACE. The 72-inch pipe located at Site 1 was skewed to the southwest to facilitate better stream flow. The stream impacts at station -L- 18+65 to 19+30 LT changed from 52-feet of temporary stream impacts to 66-feet of permanent stream impacts. I have enclosed 5 copies of the updated permit plans and impact summary sheet.

This project has a let date of April 15, 2008, with a review date of February 27, 2007.

MAILING ADDRESS:
NC DEPARTMENT OF TRANSPORTATION
PROJECT DEVELOPMENT AND ENVIRONMENTAL ANALYSIS
1598 MAIL SERVICE CENTER
RALEIGH NC 27699-1598

TELEPHONE: 919-715-1500
FAX: 919-715-1501
WEBSITE: WWW.NCDOT.ORG

LOCATION:
2728 CAPITAL BLVD., SUITE 240
RALEIGH NC 27604

Thanks for your assistance with this. Please contact Sara Easterly at 715-5499 if any more information is needed.

Sincerely,



for Gregory J. Thorpe, Ph.D
Environmental Management Director, PDEA

Cc: w/attachment

Mr. Travis Wilson, NCWRC
Mr. Gary Jordan, USFWS
Ms. Polly Lespinasse, NCDWQ

Cc: w/o attachment

Dr. David Chang, P.E., Hydraulics
Mr. Mark Staley, Roadside Environmental
Mr. Greg Perfetti, P.E., Structure Design
Mr. Victor Barbour, P.E., Project Services Unit
Mr. Art King, Division 8 Environmental Officer
Mr. Jay Bennett, P.E., Roadway Design,
Mr. Majed Alghandour, P.E., Programming and TIP
Mr. Art McMillan, P.E., Highway Design
Mr. Scott McLendon, USACE
Mr. Wade Kirby, PDEA Project Planning Engineer

WETLAND PERMIT IMPACT SUMMARY

Site No.	Station (From/To)	Structure Size / Type	WETLAND IMPACTS						SURFACE WATER IMPACTS									
			Permanent Fill In Wetlands (ac)	Temp. Fill In Wetlands (ac)	Excavation in Wetlands (ac)	Mechanized Clearing in Wetlands (ac)	Hand Clearing in Wetlands (ac)	Permanent SW impacts (ac)	Temp. SW impacts (ac)	Existing Channel Impacts Permanent (ft)	Existing Channel Impacts Temp. (ft)	Natural Stream Design (ft)						
1	-L- 18+65 to 19+30 LT	72" Crosspipe																
1	-L- 19+25 to 19+67 RT	72" Crosspipe																
2	-L- 22+81 +/- RT	1 @90' Steel Girder Bridge																
2	-L- 22+85 +/- LT	1 @90' Steel Girder Bridge																
2	-L- 22+97 +/- LT	1 @90' Steel Girder Bridge																
TOTALS:																		

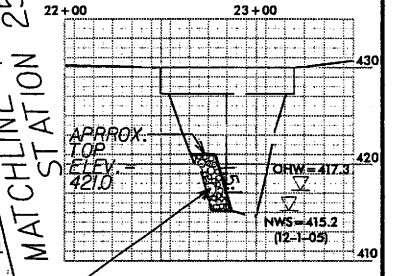
NC DEPARTMENT OF TRANSPORTATION
DIVISION OF HIGHWAYS

CHATHAM COUNTY
WBS - 33427.1.1 (B-4063)

REVISED
11/8/2007

SHEET 5 of 7

CHATHAM COUNTY, NC
 BRIDGE 20 ON NC 902
 OVER SANDY BRANCH
 11/08/07
ENGLISH
 PROFILE ALONG EXISTING BRIDGE



TEMPORARY CAUSEWAY CLASS II RIP RAP USE COARSE AGGREGATE SURFACE AS NEEDED

CAUSEWAY QUANTITIES
 VOLUME OF CLASS II RIP RAP BELOW ORDINARY HIGH WATER = 39 YD³

LEGEND:
 DENOTES TEMPORARY FILL IN SURFACE WATERS
 DENOTES FILL IN SURFACE WATERS
 PAVEMENT REMOVAL

MULKEY
 ENGINEERS & CONSULTANTS
 1000 W. 10th St.
 Raleigh, N.C. 27603
 (919) 851-1818 FAX
 WWW.MULKEYINC.COM

DETAIL 'E'
 RIP RAP AT EMBANKMENT (Not to Scale)

LINE	STA. TO STA.	RIP RAP (TONS)	FILTER FABRIC (YD ²)
-L-	22+60 - 22+75 LT.	16.0	19
-L-	23+00 - 23+10 LT.	12.0	13
-L-	22+80 - 23+00 RT.	21.0	25

DETAIL 'D'
 CUT DITCH (Not to Scale)

LINE	STA. TO STA.
-L-	21+00 - 22+50 LT.

DETAIL 'B'
 CHANNEL IMPROVEMENT (20 L.F.) (Not to Scale)

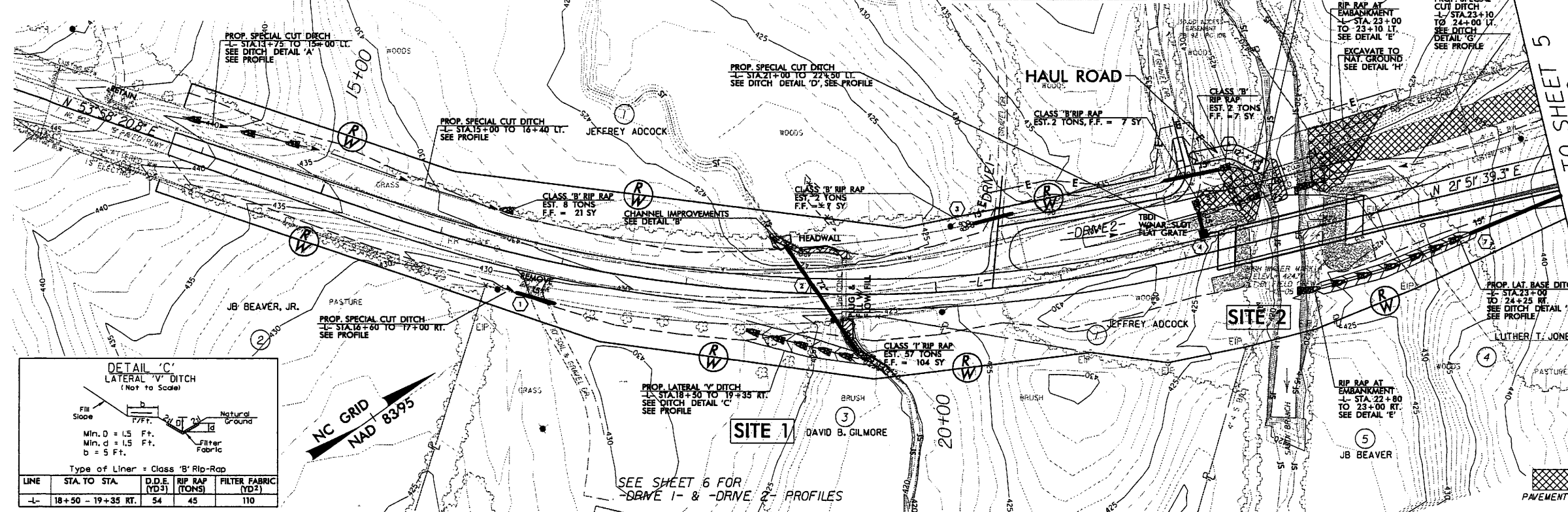
LINE	STA. TO STA.
-L-	13+75 - 15+00 LT.

DETAIL 'A'
 SPECIAL CUT DITCH (Not to Scale)

LINE	STA. TO STA.	RIP RAP (TONS)	FILTER FABRIC (YD ²)
-L-	13+75 - 15+00 LT.	40	197

DETAIL 'C'
 LATERAL 'V' DITCH (Not to Scale)

LINE	STA. TO STA.	D.D.E. (YD ³)	RIP RAP (TONS)	FILTER FABRIC (YD ²)
-L-	18+50 - 19+35 RT.	54	45	110



DETAIL 'F'
 LATERAL BASE DITCH (Not to Scale)

LINE	STA. TO STA.	D.D.E. (YD ³)	RIP RAP (TONS)	FILTER FABRIC (YD ²)
-L-	23+00 - 24+25 RT.	65	70	190

DETAIL 'G'
 CUT DITCH (Not to Scale)

LINE	STA. TO STA.	RIP RAP (TONS)	FILTER FABRIC (YD ²)
-L-	23+10 - 24+00 LT.	42	117

DETAIL 'H'
 EMBANKMENT EXCAVATION (Not to Scale)

LINE	STA. TO STA.	D.D.E. (YD ³)
-L-	22+40 - 23+82 LT.	250.0

BM #1: -BL- STA. 5+38 69' LT
 RAILROAD SPIKE SET IN
 BASE OF CP&L POLE *AG50AC
 ELEV. = 458.90'

BM #2: -L- STA. 22+70.64 150' LT
 RAILROAD SPIKE SET IN BASE
 OF 18' HICKORY
 ELEV. = 423.32'

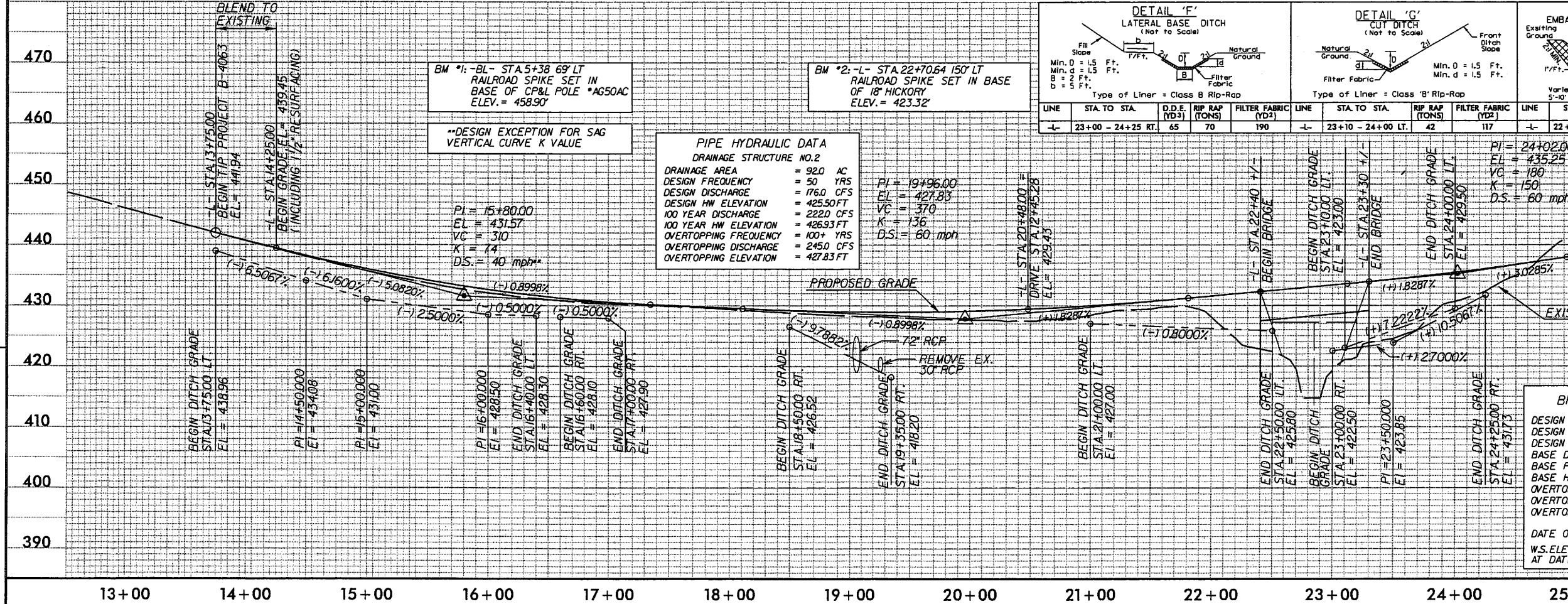
**DESIGN EXCEPTION FOR SAG
 VERTICAL CURVE K VALUE

PIPE HYDRAULIC DATA
 DRAINAGE STRUCTURE NO. 2
 DRAINAGE AREA = 92.0 AC
 DESIGN FREQUENCY = 50 YRS
 DESIGN DISCHARGE = 176.0 CFS
 DESIGN HW ELEVATION = 425.50 FT
 100 YEAR DISCHARGE = 222.0 CFS
 100 YEAR HW ELEVATION = 426.93 FT
 OVERTOPPING FREQUENCY = 100+ YRS
 OVERTOPPING DISCHARGE = 245.0 CFS
 OVERTOPPING ELEVATION = 427.83 FT

PI = 19+96.00
 EL = 427.83
 VC = 370
 K = 136
 D.S. = 60 mph

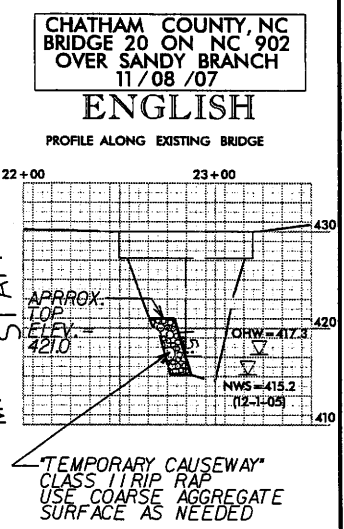
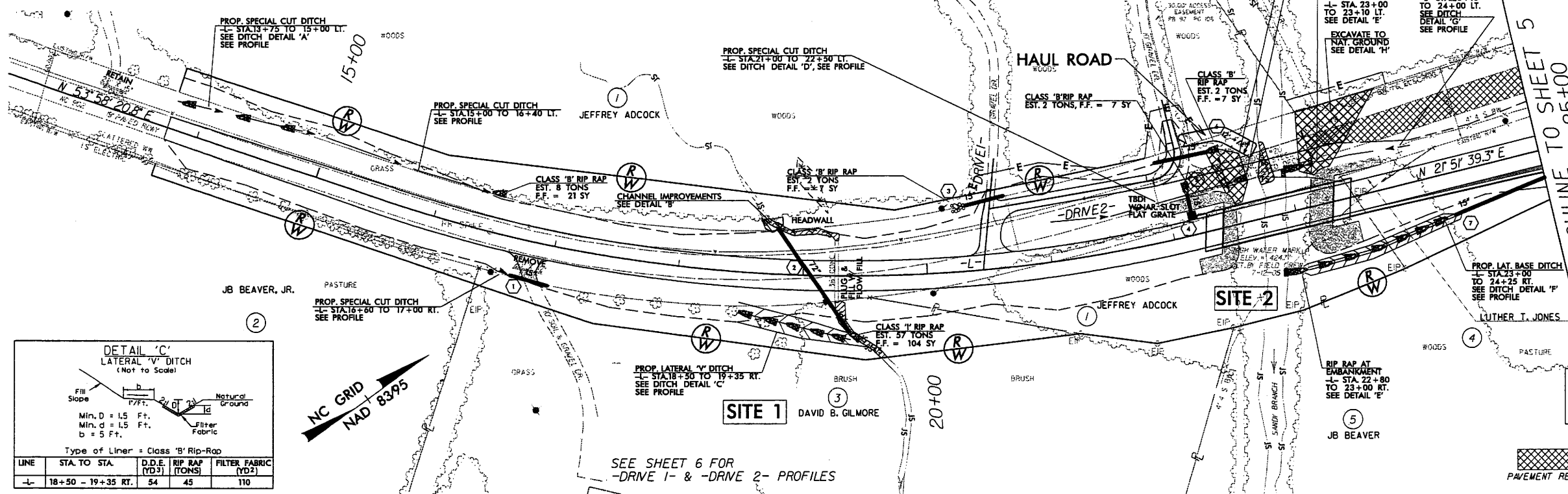
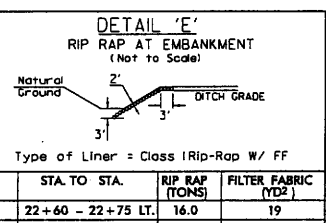
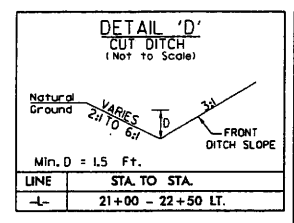
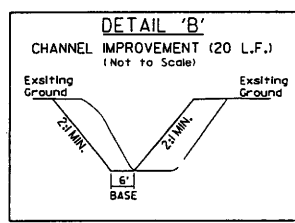
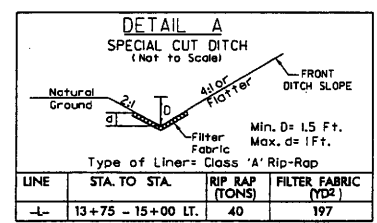
PI = 24+02.00
 EL = 435.25
 VC = 180
 K = 150
 D.S. = 60 mph

BRIDGE HYDRAULIC DATA
 DESIGN DISCHARGE = 1400 CFS
 DESIGN FREQUENCY = 50 YRS
 DESIGN HW ELEVATION = 424.0 FT
 BASE DISCHARGE = 1700 CFS
 BASE FREQUENCY = 100 YRS
 BASE HW ELEVATION = 424.9 FT
 OVERTOPPING DISCHARGE = 4700 CFS
 OVERTOPPING FREQUENCY = 500+ YRS
 OVERTOPPING ELEVATION = 430.0 FT
 DATE OF SURVEY = 12/1/05
 W.S. ELEVATION AT DATE OF SURVEY = 415.2 FT



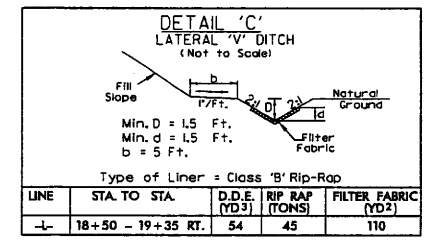
REVISIONS

250550 Plm Rn Hydr hydraulics Permit B-4063 11/08/07 11/08/07

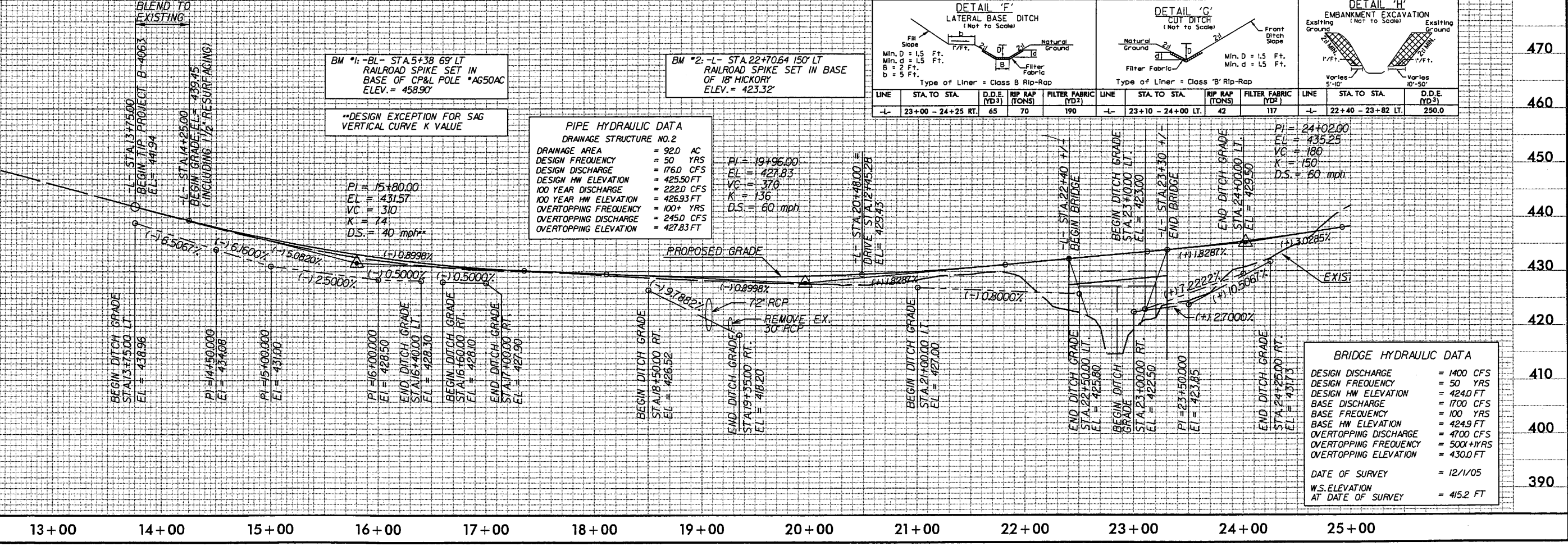


CAUSEWAY QUANTITIES
 VOLUME OF CLASS II RIP RAP BELOW ORDINARY HIGH WATER = 39 YD³

	DENOTES TEMPORARY FILL IN SURFACE WATERS
	DENOTES FILL IN SURFACE WATERS



REVISIONS



11/8/2007 2:50:32 PM R:\Hydro\clicca\Permit\B-4063\hyd_ds\04.dgn