

STATE OF NORTH CAROLINA  
DEPARTMENT OF TRANSPORTATION

BEVERLY EAVES PERDUE  
GOVERNOR

EUGENE A. CONTI, JR.  
SECRETARY

August 21, 2009

U. S. Army Corps of Engineers  
Regulatory Field Office  
Post Office Box 1000  
Washington, NC 27889-1000

Attention: Mr. William Wescott  
NCDOT Coordinator

Dear Sir:

Subject: Permit Modification Request for **Nationwide Permit 23, 401 Water Quality Certification, and Tar-Pamlico Riparian Buffer Authorization Request** for the proposed replacement of Bridge Nos. 127 over the Tar River Overflow and 129 over the Tar River on SR 1565 in Pitt County. TIP No. B-3684; Federal Aid Project No. BRSTP-1565(4); State Project No. 8.2221101. Debit \$475 from WBS No. 33225.1.1

Reference: Nationwide Permits 23, 33, and 12 issued March 20, 2008; USACE Action ID – saw-2008-01011  
Modifications issued May 18, 2009; USACE Action ID – saw-2008-01011  
Section 401 Water Quality Certification and Tar-Pamlico River Buffer  
Authorization issued April 25, 2008; DWQ Project No. 20080356  
Modifications issued May 22, 2009; DWQ Project No. 20080356 v.2

Please see the enclosed revised permit drawings, buffer drawings, and the revised debit ledger for the Grimesland Bridge Mitigation site for the above referenced project. During construction, additional riparian wetland impacts (0.08 acre permanent riparian wetland impacts) in the form of mechanized clearing were required at Sites 1 and 2. In addition, 2,704 ft<sup>2</sup> of impacts to riparian buffers were necessary to facilitate construction.

Section 404 Permit: It is anticipated that the additional permanent impacts relating to roadway fill in wetlands will be authorized under Section 404 Nationwide Permit 23 (Categorical Exclusion). We are, therefore, requesting the modification of the Nationwide Permit 23 issued March 20, 2008.

Section 401 Permit: It is anticipated that the additional permanent impacts will be authorized by Section 401 General Certification number 3701. We are therefore requesting a modification to the General Certification issued April 25, 2008. The NCDOT will adhere to all general conditions of the Water Quality Certification. In accordance with 15A NCAC 2H .0501(a) we are providing five copies of this application to the North Carolina Department of Environmental and Natural

**MAILING ADDRESS:**  
NC DEPARTMENT OF TRANSPORTATION  
PROJECT DEVELOPMENT AND ENVIRONMENTAL ANALYSIS  
1598 MAIL SERVICE CENTER  
RALEIGH NC 27699-1598

TELEPHONE: 919-431-2000  
FAX: 919-431-2002

WEBSITE: [WWW.NCDOT.ORG](http://WWW.NCDOT.ORG)

**LOCATION:**  
4701 ATLANTIC AVENUE  
SUITE 116  
RALEIGH NC 27604

Resources for their approval and \$475 to act as payment for processing the permit modification (see subject line).

Tar-Pamlico Riparian Buffer Authorization: NCDOT requests that the NC Division of Water Quality review this application and issue a modification for the Tar-Pamlico Riparian Buffer Authorization issued April 25, 2008.

Thank you for your assistance with this project. If you have any questions or need additional information, please contact Tyler Stanton at [tstanton@ncdot.gov](mailto:tstanton@ncdot.gov) or (919) 431-6748.

Sincerely,



for Gregory J. Thorpe, Ph.D., Environmental Management Director  
Project Development and Environmental Analysis Branch

Cc:

W/attachment

Mr. Brian Wrenn, NCDWQ (5 Copies)

W/o attachment (see website for attachments)

Dr. David Chang, P.E., Hydraulics  
Mr. Greg Perfetti, P.E., Structure Design  
Mr. Victor Barbour, P.E., Project Services Unit  
Mr. Mark Staley, Roadside Environmental  
Mr. C. E. Lassiter, P.E., Div. 2 Engineer  
Mr. Jay Johnson, Div. 2 Environmental Officer  
Mr. Scott McLendon, USACE, Wilmington  
Mr. Gary Jordan, USFWS  
Mr. Travis Wilson, NCWRC  
Mr. Ron Sechler, NMFS  
Ms. Anne Deaton, NCDMF  
Mr. Jay Bennett, P.E., Roadway Design  
Mr. Majed Alghandour, P. E., Programming and TIP  
Mr. Art McMillan, P.E., Highway Design  
Ms. Stacy Oberhausen, P.E., PDEA  
Ms. LeiLani Paugh, NEU  
Mr. Randy Griffin, NEU

Revised Debit Ledger Grimesland Bridge Site August 19, 2009

NCDOT Onsite Mitigation Debit Ledger									
Site name	Site TIP	HUC	River Basin	Mitigation Type	As Built Quantity	Available	Debit	Debit	Debit
Grimesland Bridge	B-3684	3020103	Tar-Pamlico				B-3684	B-3684 Mod	B-3684 Mod
				Riverine Wetland Restoration	3.05	1.61	1.29	0.07	0.08

# WETLANDS IMPACT PERMIT SUMMARY


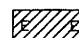
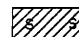
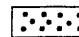
Site No.	Station (From/To)	Structure Size / Type	Fill In Wetlands (ac)	Temp. Fill In Wetlands (ac)	Excavation In Wetlands (ac)	Hand Clearing In Wetlands (ac)	Mechanized Clearing (Method III) (ac)	Wetland Restoration (ac)	Fill In SW (Natural) (ac)	Fill In SW (Pond) (ac)	Temp. Fill In SW (ac)	Existing Channel Impacted (ft)	Natural Stream Design (ft)
1	15+00 to 17+80 Rt.	3@48" & 1@60" RCP	0.18		<0.01		0.07		0.02			100	
2	15+00 to 17+80 Lt.	3@48" & 1@60" RCP	0.18		<0.01		0.07		0.02			81	
3	29+18 TO 52+65 (Tar River and Floodplain)	15@100ft & 5@90 ft 54" prestressed girder bridge (L = 1950 ft.)											
	Impacts due to bridge construction		0.06	0.01		3.36	0.12	3.05	0.03				
	Impacts due to roadway fill		0.44										
4	54+00 Lt.		0.19			0.03	0.05						
5	56+30 Rt.		0.01				0.03						
6	57+15 Lt.		0.01			<0.01	0.01						
<b>TOTALS:</b>			1.07	0.01	<0.01	3.39	0.35	3.05	0.07			181	

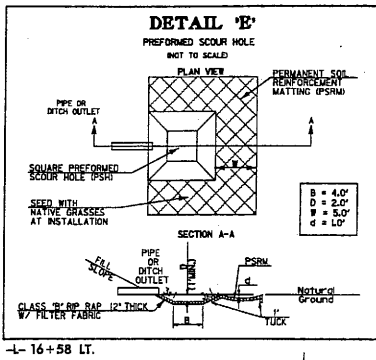
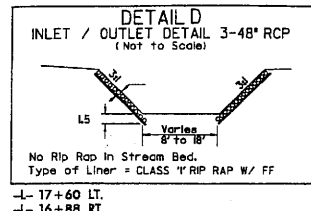
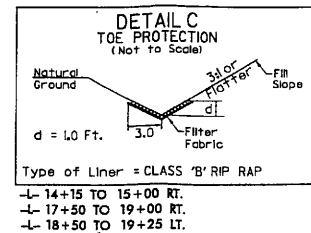
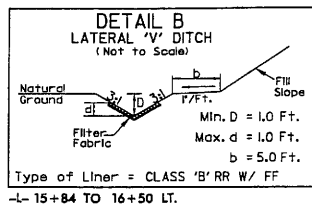
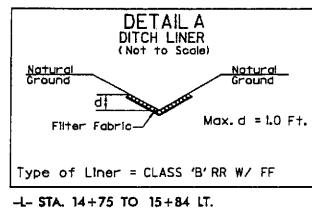
**NCDOT**  
 DIVISION OF HIGHWAYS  
 PITT COUNTY  
 PROJECT 333225.1.1.0 (B-3684)  
 BRIDGES NO. 129 OVER TAR RIVER  
 AND BRIDGE NO. 127 OVER TAR RIVER  
 OVERFLOW ON SR 1565

SHEET OF 7/23/2009  
**Permit Drawing**  
**Sheet 5 of 35**  
 REV. 8-3-01

Form Revised 3/2/01

8/17/99

-  DENOTES FILL IN WETLAND
-  DENOTES EXCAVATION IN WETLAND
-  DENOTES FILL IN SURFACE WATER
-  DENOTES MECHANIZED CLEARING

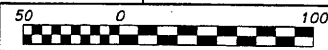


# ENGLISH

USE METHOD 3 FOR CLEARING AND GRUBBING

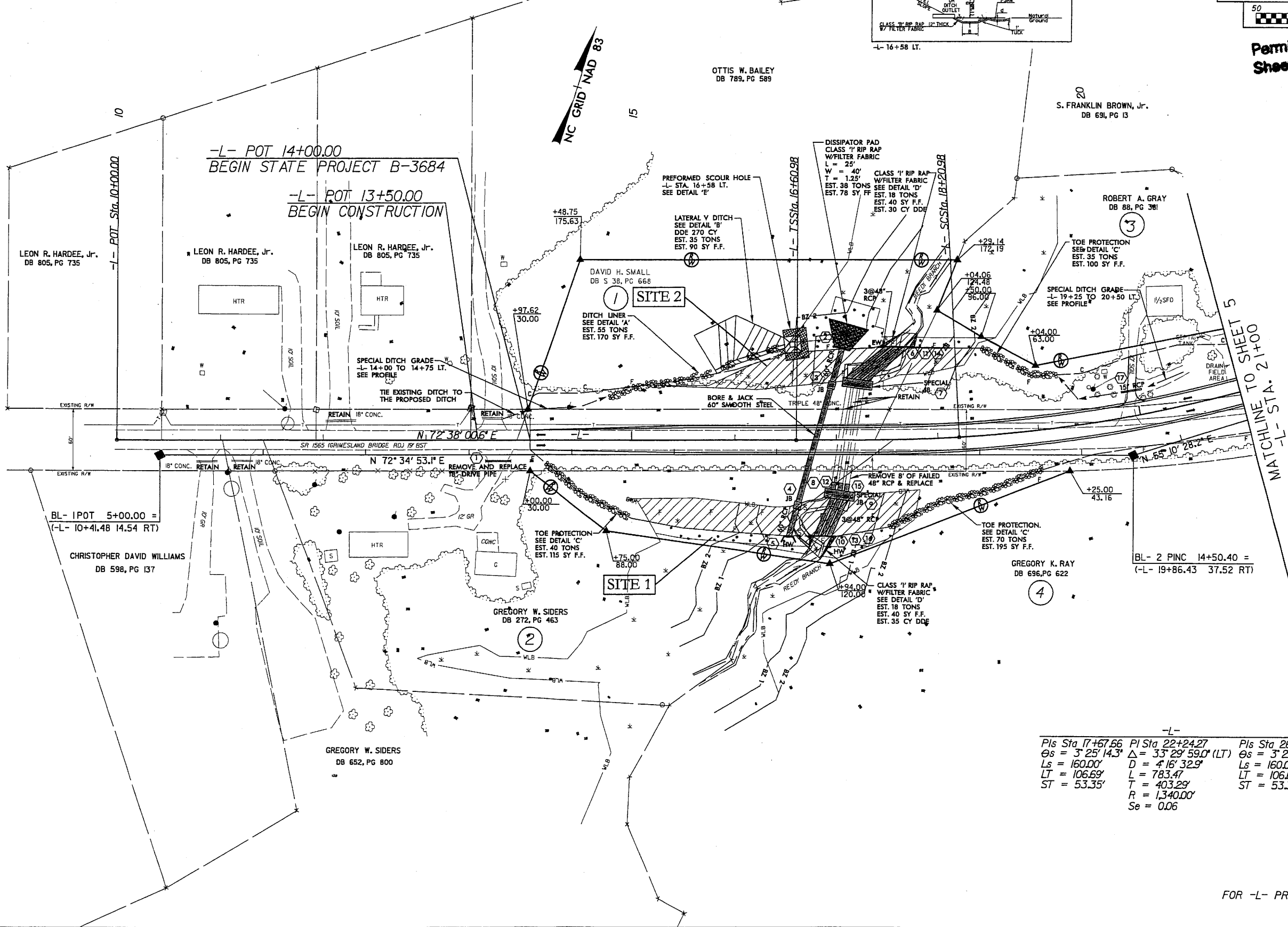
PITT COUNTY  
SR 1565  
5/23/2009

PROJECT REFERENCE NO. B-3684	SHEET NO. 4
ROADWAY DESIGN ENGINEER	HYDRAULICS ENGINEER
PRELIMINARY PLANS DO NOT USE FOR CONSTRUCTION	
INCOMPLETE PLANS DO NOT USE FOR R/W ACQUISITION	



Permit Drawing  
Sheet 6 of 35  
REV. 8-3-09

REVISIONS



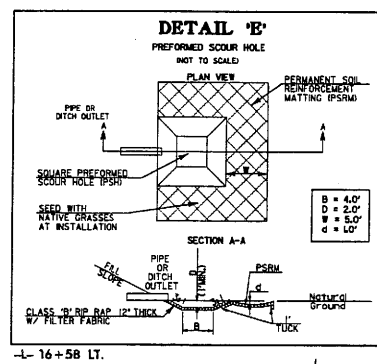
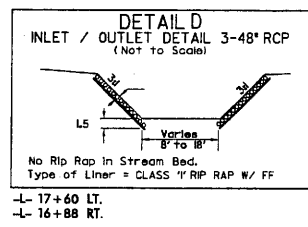
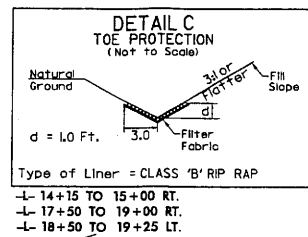
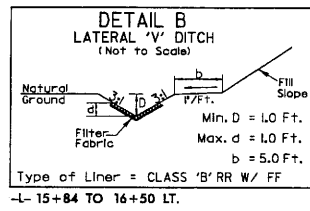
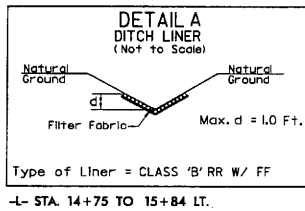
Pls Sta 17+67.66	PI Sta 22+24.27	Pls Sta 26+57.80
Os = 3° 25' 14.3"	Δ = 33° 29' 59.0" (LT)	Os = 3° 25' 14.3"
Ls = 160.00'	D = 4' 16' 32.9"	Ls = 160.00'
LT = 106.69'	L = 783.47'	LT = 106.69'
ST = 53.35'	T = 403.29'	ST = 53.35'
	R = 1,340.00'	
	Se = 0.06	

FOR -L- PROFILE SEE SHEET 8

7/23/2009 R:\Hydro\Loca\Permit\B-3684\_hyd.prm\_wat\_wa04.dgn

8/17/09

- DENOTES FILL IN WETLAND
- DENOTES EXCAVATION IN WETLAND
- DENOTES FILL IN SURFACE WATER
- DENOTES MECHANIZED CLEARING



**ENGLISH**

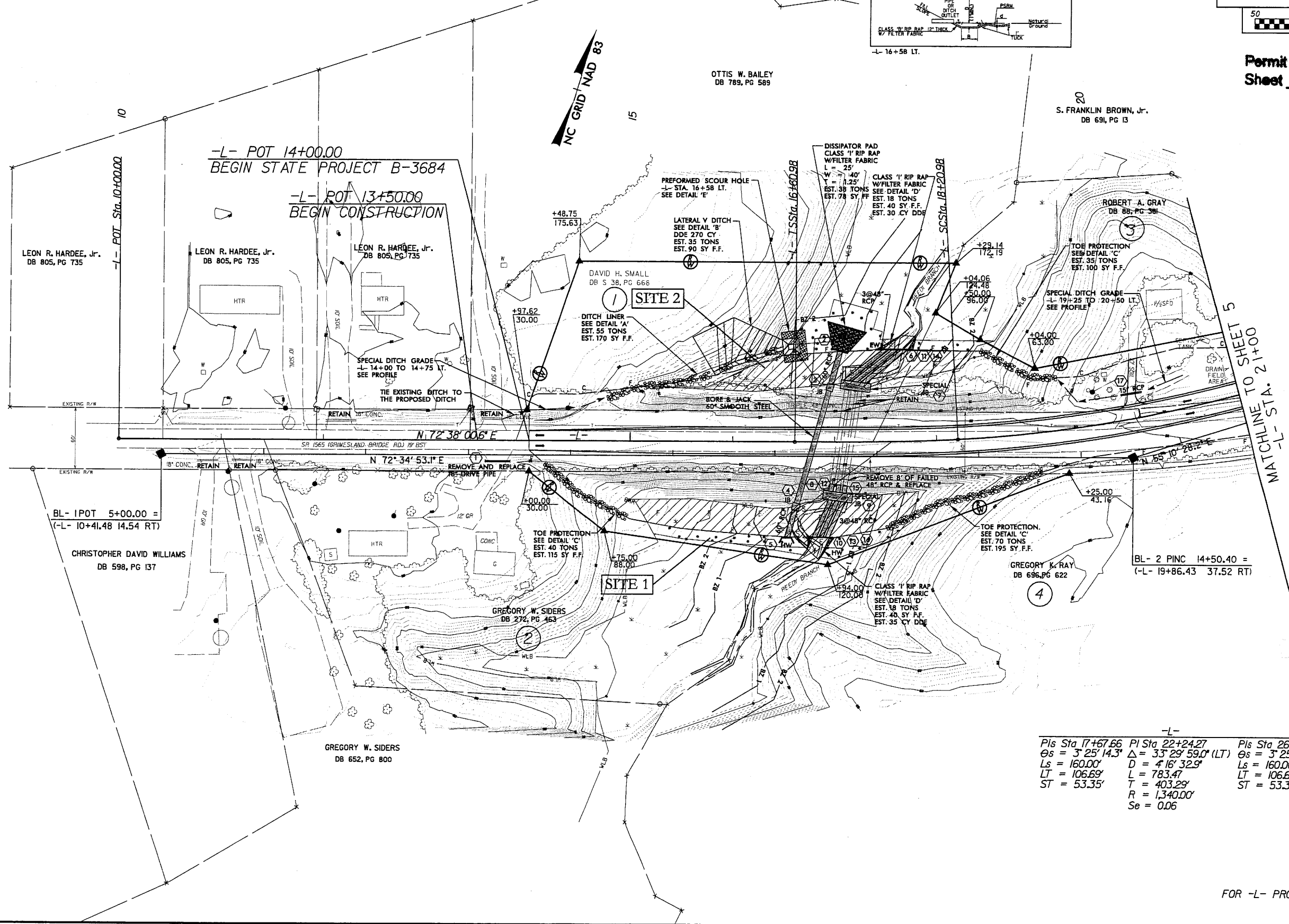
USE METHOD 3 FOR CLEARING AND GRUBBING

PITT COUNTY  
SR 1565  
5/23/2009

PROJECT REFERENCE NO. <b>B-3684</b>	SHEET NO. <b>4</b>
R/W SHEET NO.	
ROADWAY DESIGN ENGINEER	HYDRAULICS ENGINEER
<b>PRELIMINARY PLANS</b> DO NOT USE FOR CONSTRUCTION	
<b>INCOMPLETE PLANS</b> DO NOT USE FOR R/W ACQUISITION	

Permit Drawing  
Sheet **7** of **35**  
REV. 8-3-09

REVISIONS



-L-

Pls Sta 17+67.66	Pl Sta 22+24.27	Pls Sta 26+57.80
$\Theta_s = 3^\circ 25' 14.3''$	$\Delta = 33^\circ 29' 59.0''$ (LT)	$\Theta_s = 3^\circ 25' 14.3''$
$L_s = 160.00'$	$D = 4' 16' 32.9''$	$L_s = 160.00'$
$LT = 106.69'$	$L = 783.47'$	$LT = 106.69'$
$ST = 53.35'$	$T = 403.29'$	$ST = 53.35'$
	$R = 1,340.00'$	
	$Se = 0.06$	

FOR -L- PROFILE SEE SHEET B

7/23/2009  
D:\Vigilant\Loca\Permit\13-3684\_Highway\prj\ent\1304.dgn

# BUFFER IMPACTS SUMMARY

SITE NO.	STRUCTURE SIZE / TYPE	STATION (FROM/TO)	IMPACT				MITIGABLE				BUFFER REPLACEMENT	
			TYPE		ALLOWABLE		MITIGABLE		ZONE 1 (ft <sup>2</sup> )	ZONE 2 (ft <sup>2</sup> )		
			ROAD CROSSING	BRIDGE	PARALLEL IMPACT	ZONE 1 (ft <sup>2</sup> )	ZONE 2 (ft <sup>2</sup> )	ZONE 1 (ft <sup>2</sup> )			ZONE 2 (ft <sup>2</sup> )	
7	3@48" & 1 @ 60"	15+86 to 17+68 Rt	X			4649	2089	6738				
8	3@48" & 1 @ 60"	16+56 to 18+40 Lt	X			4151	3333	7484				
9	15@100ft & 5@90 ft 54" prestress girder	29+40 to 30+14		X		1585	1586	3171				
10	15@100ft & 5@90 ft 54" prestress girder	33+02 to 33+70		X		3119	2045	5164				
<b>TOTAL:</b>						13504	9053	22557	0	0	0	0

Site 7 - Total Buffer length is 75 feet.  
 Site 8 - Total Buffer length is 85 feet.  
 Site 9 - Total Buffer length is 105 feet.  
 Site 10 - Total Buffer length is 100 feet.

**Buffer Drawing**  
**Sheet 5 of 9**  
 REV. 8-23-07

N.C. DEPT. OF TRANSPORTATION  
 DIVISION OF HIGHWAYS

PITT COUNTY  
 PROJECT: B-3684  
 BRIDGE NO. 129 OVER TAR RIVER  
 AND BRIDGE NO. 127 OVER TAR RIVER OVERFLOW  
 7/23/2009

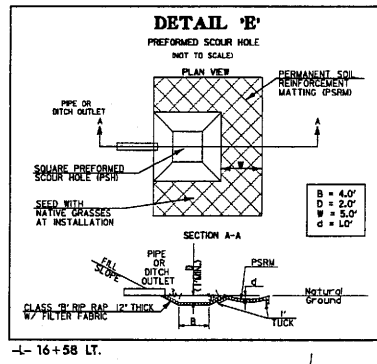
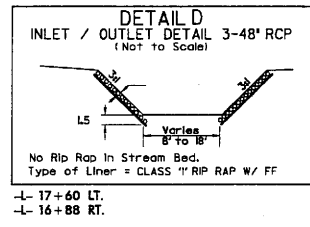
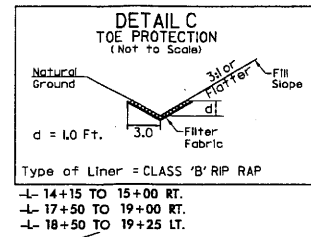
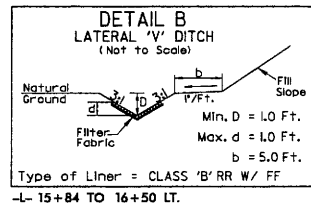
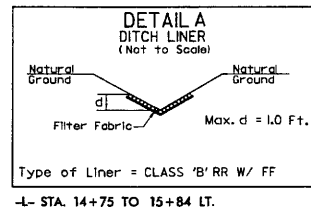
SHEET \_\_\_\_\_ OF \_\_\_\_\_





8/17/99

- ALLOWABLE IMPACTS ZONE 1
- ALLOWABLE IMPACTS ZONE 2



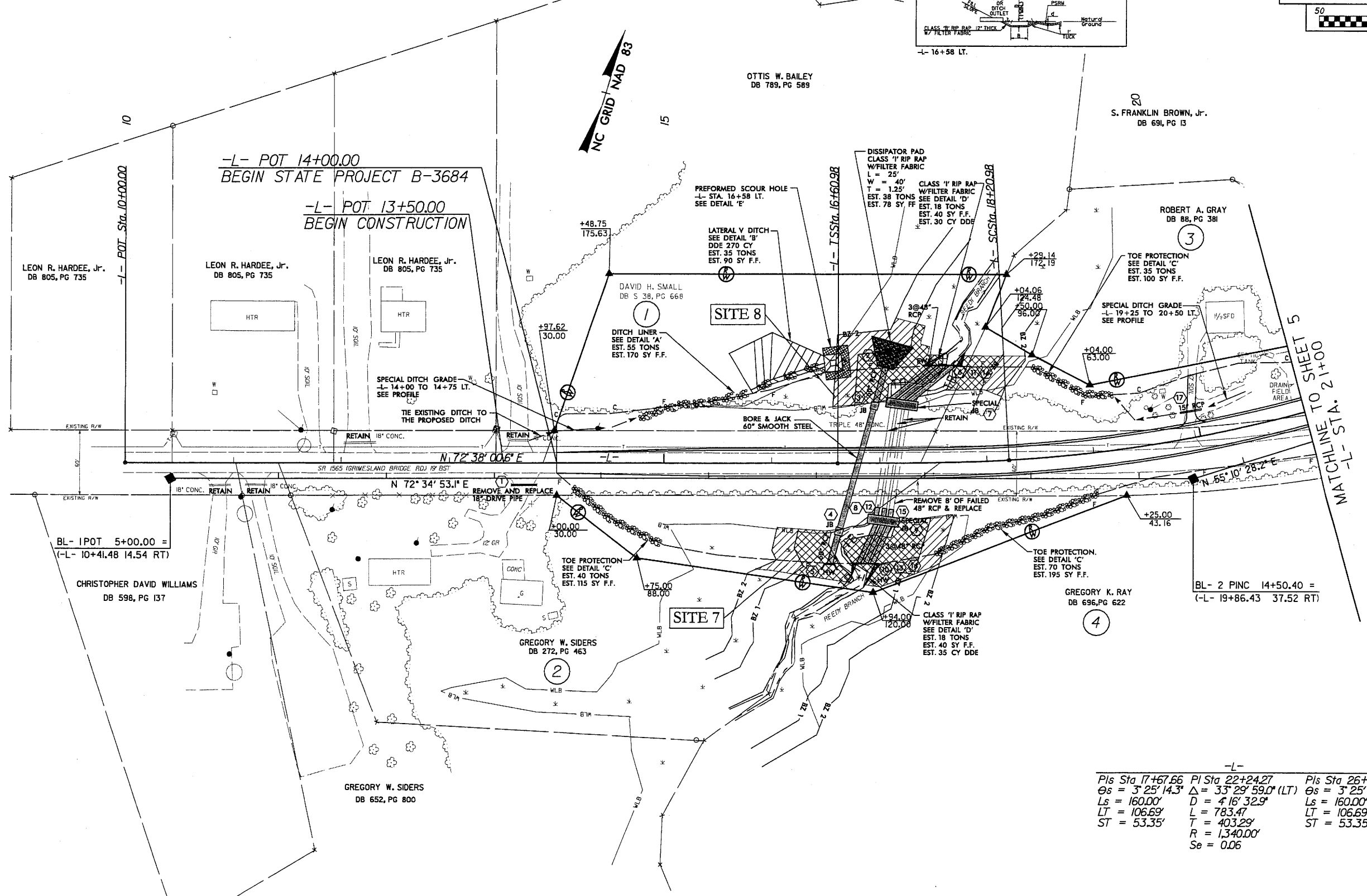
**ENGLISH**

USE METHOD 3 FOR CLEARING AND GRUBBING

PITT COUNTY  
SR 1565  
7/23/2009

PROJECT REFERENCE NO. B-3684	SHEET NO. 4
RAW SHEET NO.	
ROADWAY DESIGN ENGINEER	HYDRAULICS ENGINEER
<b>Buffer Drawing</b>	
Sheet <u>6</u> of <u>9</u>	
PRELIMINARY PLANS DO NOT USE FOR CONSTRUCTION	
INCOMPLETE PLANS DO NOT USE FOR R/W ACQUISITION	
50 0 100	

REVISIONS



-L-

Pls Sta 17+67.66	Pl Sta 22+24.27	Pls Sta 26+57.80
Os = 3' 25" 14.3"	Δ = 33' 29" 59.0" (LT)	Os = 3' 25" 14.3"
Ls = 160.00'	D = 4' 16" 32.9"	Ls = 160.00'
LT = 106.69'	L = 783.47'	LT = 106.69'
ST = 53.35'	T = 403.29'	ST = 53.35'
	R = 1,340.00'	
	Se = 0.06	

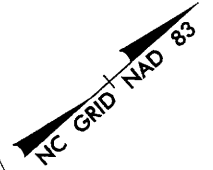
# BUFFER IMPACTS

FOR -L- PROFILE SEE SHEET 8

7/23/2009  
R:\Hydraulics\Perms\B-3684\hyd.prm.buf\_sh04.dgn

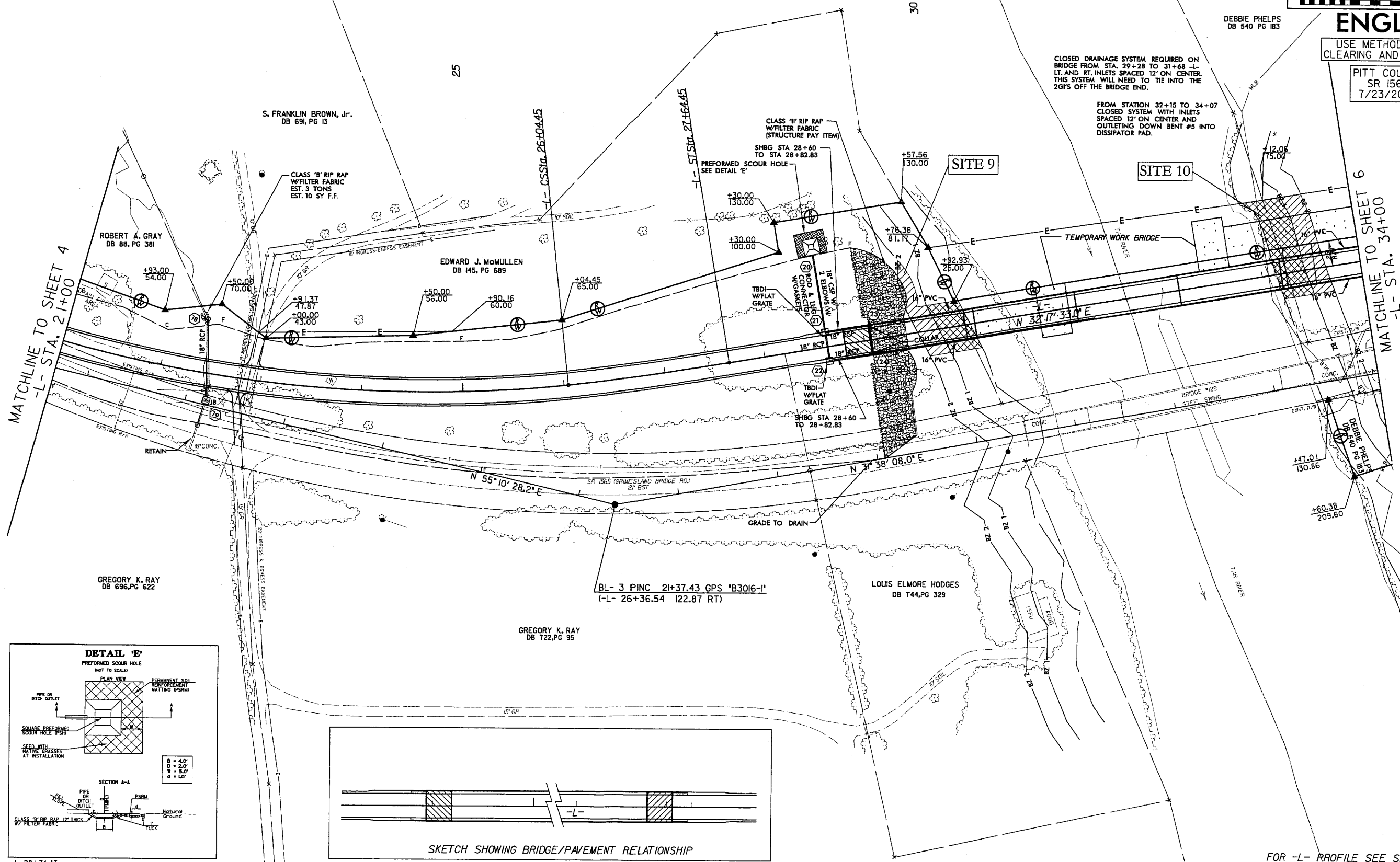
# BUFFER IMPACTS

PROJECT REFERENCE NO. B-3684	SHEET NO. 5
RAW SHEET NO.	
ROADWAY DESIGN ENGINEER	HYDRAULICS ENGINEER
<b>Buffer Drawing</b> <b>Sheet 7 of 9</b> REV. 8-3-09	



-L-		
PIs Sta 17+67.66	PI Sta 22+24.27	PIs Sta 26+57.80
$\theta_s = 3^\circ 25' 14.3''$	$\Delta = 33^\circ 29' 59.0''$ (LT)	$\theta_s = 3^\circ 25' 14.3''$
$L_s = 160.00'$	$D = 4' 16' 32.9''$	$L_s = 160.00'$
$LT = 106.69'$	$L = 783.47'$	$LT = 106.69'$
$ST = 53.35'$	$T = 403.29'$	$ST = 53.35'$
	$R = 1,340.00'$	
	$Se = 0.06$	

- ALLOWABLE IMPACTS ZONE 1
- ALLOWABLE IMPACTS ZONE 2



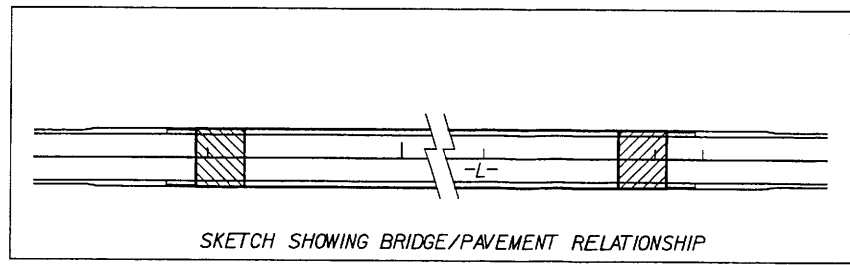
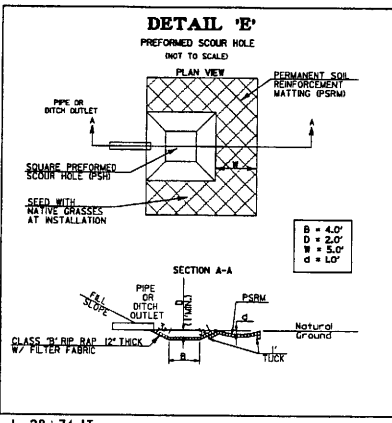
CLOSED DRAINAGE SYSTEM REQUIRED ON BRIDGE FROM STA. 29+28 TO 31+48 -L- LT. AND RT. INLETS SPACED 12' ON CENTER. THIS SYSTEM WILL NEED TO TIE INTO THE 20'S OFF THE BRIDGE END.

FROM STATION 32+15 TO 34+07 CLOSED SYSTEM WITH INLETS SPACED 12' ON CENTER AND OUTLETING DOWN BENT #5 INTO DISSIPATOR PAD.

**ENGLISH**  
 USE METHOD 3 FOR CLEARING AND GRUBBING  
 PITT COUNTY  
 SR 1565  
 7/23/2009

MATCHLINE TO SHEET 4  
-L- STA. 21+00

MATCHLINE TO SHEET 6  
-L- STA. 34+00



FOR -L- PROFILE SEE SHEET 8

12-07-07 R/W REVISION ADJUSTED EASEMENT TO PARCEL NO.7 DUE TO PERMIT DRAWING IN THE GRIMESLAND MITIGATION SITE.

7/23/2009 R:\Hydro\lca\perm\15-3684\_hyd.prm\_bu1\_ah05.dgn