



STATE OF NORTH CAROLINA
DEPARTMENT OF TRANSPORTATION

MICHAEL F. EASLEY
GOVERNOR

LYNDO TIPPETT
SECRETARY

October 21, 2004

U.S. Army Corps of Engineers
Raleigh Field Office
6508 Falls of the Neuse Road, Suite 120
Raleigh, NC 27615

ATTENTION: Mr. Eric Alsmeyer
NCDOT Coordinator

Dear Sir:

SUBJECT: Utility Impact Memo for the proposed replacement of Bridge No. 246 over Little Arm Branch on SR 2564 (Creech Road) in Wake County, Division 5. Federal Aid Project No. BRSTP-2564(1), State Project No. 8.2406901, T.I.P. B-3376.

Please find the enclosed permit drawings and project site map for the utility line replacement. The North Carolina Department of Transportation proposes to replace Bridge No. 246 over Little Arm Branch on SR 2564 (Creech Road) in Wake County, North Carolina. On August 30, 2004 a Buffer Certification Application was sent out for approval for the subject project. No impacts to Waters of the U.S. will occur as a result of this project.

Buffer impacts include construction of a temporary detour bridge, construction of the new bridge and parallel impacts associated with a sewer line. According to the Neuse River Basin Buffer Rules, temporary roads for bridge construction are ALLOWABLE. Non-electric (sewer) utility lines with impacts other than perpendicular crossings in Zone 2 only and impacts other than perpendicular crossings in Zone 1 are ALLOWABLE WITH MITIGATION. Impacts associated with Zone 1 total 653 ft². Impacts associated with Zone 2 equal 1,089 ft². Total impacts associated with this utility work total 1,742 ft² or 0.04 acre of buffers.

Project design requires buffers to be impacted in association with sewer line utility upgrade and realignment. The new alignment is proposed to cross an area applicable to the Neuse River Basin Buffer Rules. The City of Raleigh will replace the existing clay pipe with a stronger ductile iron sewer pipe. This reduces chances of the pipe cracking and spilling sewage onto surrounding land and into waters. Also, the pipe alignment will be straightened moving it further away from Little Arm Branch. Installation of the sewer line will cause 1,219 ft² of impact. Sewer Line 1 Sta. 0+33.81, crosses the Line -L- at Sta. 12+63.87 (see permit drawing sheet attached). The second parallel utility impact will involve the filling and plugging of 2 sewer manholes. The first manhole is located on the west side of the bridge (Existing Manhole - B2) - Sta. 12+32.19 Line -L- 7.51. The second manhole is located on the east side of the bridge (Existing Manhole-

B-3376

A1) - Sta. 12+88.45 Line -L- 23.54 right. Impacts total 523 ft² (see permit drawing sheet attached).

Both impacts are considered allowable with mitigation according to the NCDENR Division of Water Quality Administrative Code Section: 15A NCAC 2B .0100 Procedures for Assignment of Water Quality Standards 15A NCAC 2B .0200 Classifications of Water Quality Standards. No wetlands or streams will be affected by the sewer utility work.

According to the Final Regional Conditions for Nationwide Permits in the Wilmington District: <http://www.saw.usace.army.mil/wetlands/Nationwides/NWP%20Final%20Public%20Notice%206-2002.pdf>, starting on page 6 to page 9 on page 7. Condition 9) A pre-construction notification (PCN) shall be required for any activity impacting greater than 1/10 acre of waters of the US, including wetlands. Impacts associated with this project affect Neuse River Basin Buffers, no impacts are associated with waters of the US. We have determined that this activity will not require written authorization of the Nationwide Permit 12. This memo serves as supplemental information for activities associated with TIP B-3376.

Thank you for your assistance with this project. If you have any questions or need additional information please call Ms. Cheryl Knepp at (919) 715-1489.

Sincerely,



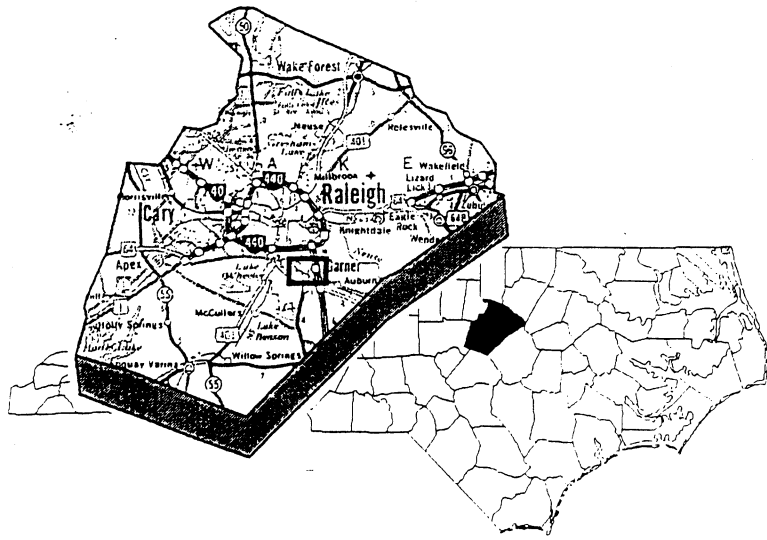
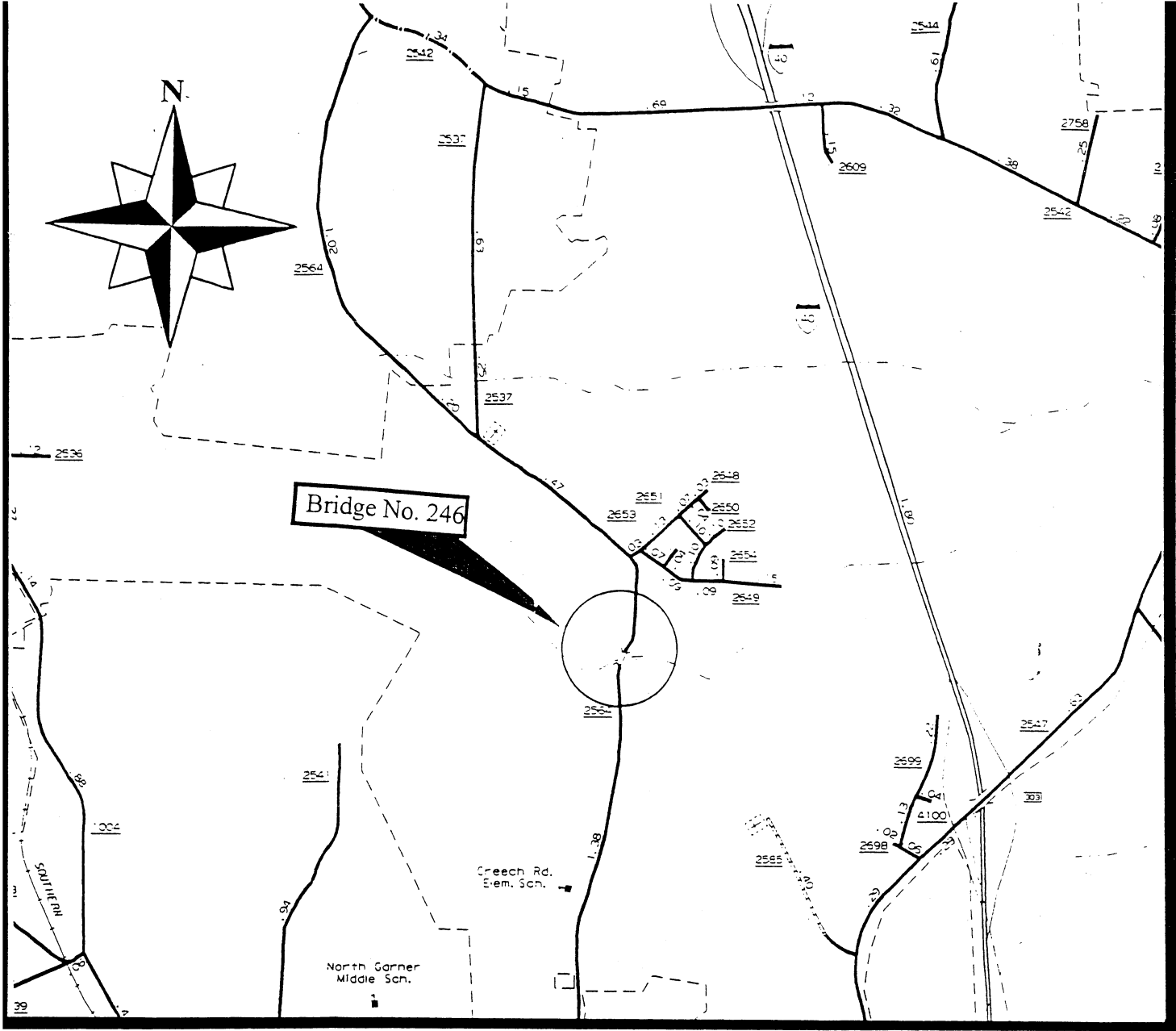
for

Gregory J. Thorpe, Ph.D.
Environmental Management Director, PDEA

cc:

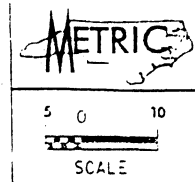
Mr. John Hennessy, Division of Water Quality
Mr. Travis Wilson, NCWRC
Mr. Gary Jordan, USFWS
Mr. Jay Bennett, P.E., Roadway Design
Mr. Omar Sultan, Programming and TIP
Mr. Art McMillan, P.E., Highway Design
Mr. David Chang, P.E., Hydraulics
Mr. Greg Perfetti, P.E., Structure Design

Mr. Mark Staley, Roadside Environmental
Mr. Dennis Pipkin, P.E., Project Planning
Engineer
Mr. John F. Sullivan, III, FHWA
Mr. J. M. Mills, P.E.
Mr. Jerry Parker, DEO
Mr. David Franklin, USACE, Wilmington

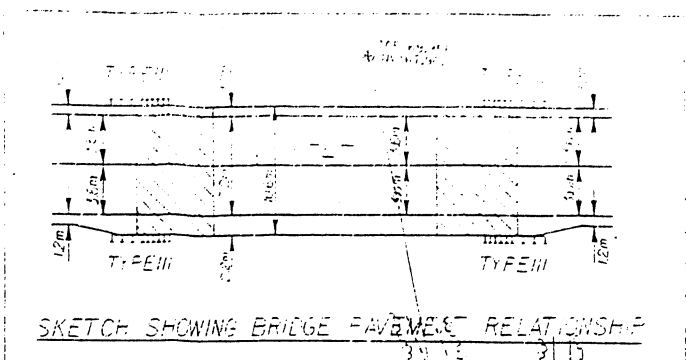


	<p>North Carolina Department of Transportation Division of Highways Planning & Environmental Branch</p>
<p>Wake County Replace Bridge No. 246 on SR 2564 Over Creek B-3376</p>	
<p>Figure One</p>	

ALL WATER AND SEWER LINES OWNED BY THE CITY OF RALEIGH



PROJECT REFERENCE	B-3376	SHEET NO.	7 of 7
DESIGNED BY:	JH		
DRAWN BY:	JH		
CHECKED BY:	CDB		
APPROVED BY:	CDB		
REVISED:			
NORTH CAROLINA DEPARTMENT OF TRANSPORTATION			
DESIGN SERVICES UNIT			
PHONE: (919) 250-4128			
FAX: (919) 250-4119			
UTILITY CONSTRUCTION PLANS ONLY			



FOR PROFILE OF -L- SEE SHEET 6
FOR PROFILE OF DRIVE 1 SEE SHEET 6
FOR DETOUR PLANS SEE SHEET NO. 8 & 9
FOR PROFILES SEE SHEET NO. 8 & 9

THEODORE W. BROWN
DB 3074-EG-284

PROP. FILL OR REMOVE 76M OF 450 MM ABANDONED SEWER PIPES

PROP. MANHOLE "EQ1"
STA. 0+69.4 LINE 1
STA. 0+00 LINE 2
STA. 12+44.24, LINE -L-
28.21 LT

EXIST. MANHOLE "B2"
STA. 0+24.8, LINE 2
STA. 12+32.19, LINE -L-
7.51 LT

PROP. BREAK DOWN AND PLUG AND FILL 2 ABANDONED UTILITY MANHOLES

PROP. 24.8 M OF 200mm DI SEWER PIPE, CLASS 50

PROP. 69.4 M OF 450mm DI SEWER PIPE, CLASS 50

EXIST. MANHOLE "A1"
STA. 0+00, LINE 1
STA. 12+88.45, LINE -L-
23.54 RT

NOTE ALL DRIVEWAY RADIUS ARE 3.0m UNLESS OTHERWISE NOTED

FRANCES W. UNDERHILL
GRANDCHILDREN TRUST
DB 5491 PG 804

BETTY C. & LEONODUS J. CLARK
DB 1804 PG 267

BETTY C. & BILLY T. WILDEF
DB 1804 PG 267

KENNETH V. & REBECCA W. HOLMES
DB 3645 PG 182

JOHN W. WINTERS
DB 3126 PG 502

CHARLIE C. & JESSIE M. WATSON
DB 1786 PG 141

MARGARET B. COLEMAN
DB 3126 PG 502

DAN E. BUOL
DB 1850 PG 16334
DB 8076 PG 615

