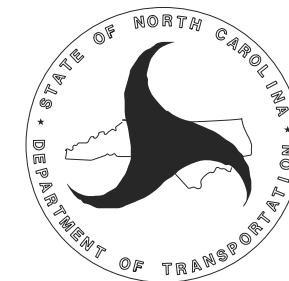


STIP PROJECT R-5021

NC 211 IMPROVEMENTS FROM NC 906 (MIDWAY ROAD/MIDDLETON
BOULEVARD) TO NC 87
BRUNSWICK COUNTY

THE FOLLOWING FIGURES (“FIGURE 2” SHEETS 1–6) ARE FROM THE
FEBRUARY 2012 CONCURRENCE POINT 4A MEETING PACKET AND
ARE PROVIDED FOR COMPARISON WITH THE CURRENT DESIGNS AND
JURISDICTIONAL RESOURCES

INTERCHANGE WITH NORTH SIDE WIDENING



NORTH CAROLINA
DEPARTMENT OF
TRANSPORTATION
DIVISION OF
HIGHWAYS
PROJECT DEVELOPMENT
AND
ENVIRONMENTAL ANALYSIS
UNIT

PRELIMINARY DESIGN
SUBJECT TO CHANGE

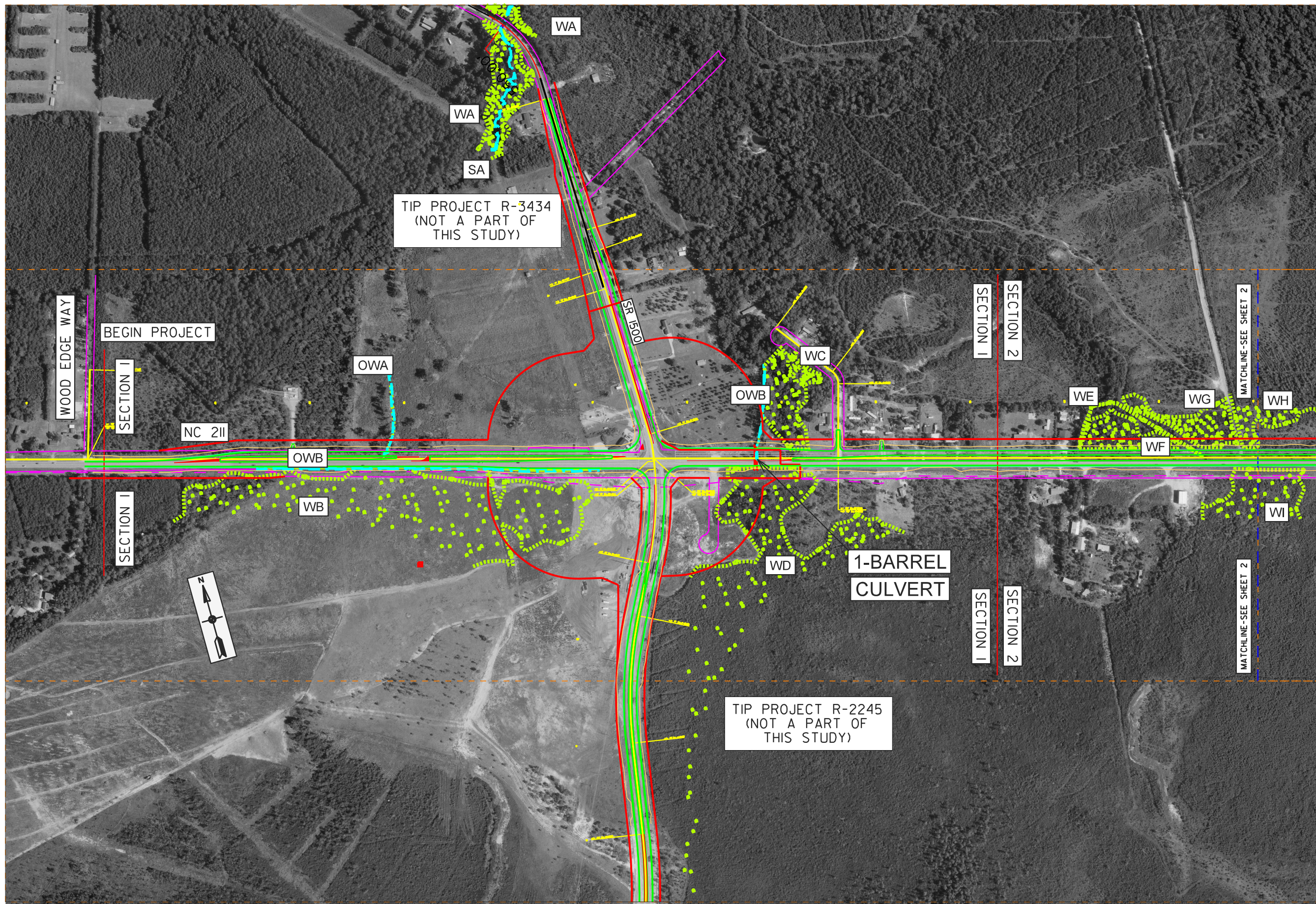
LEGEND

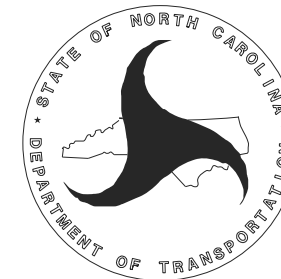
- EXISTING RIGHT OF WAY
- PROPOSED PAVEMENT
- PROPOSED STRUCTURE
- PROPOSED RIGHT OF WAY
- PROPOSED SLOPESTAKES
- IMPROVEMENTS TO BE MADE BY ADJACENT PROJECT
- EXISTING POWER LINE
- DELINEATED WETLANDS
- DELINEATED STREAMS OR OPEN WATER



NC 211
FROM
SR 1500 (MIDWAY RD.)
TO NC 87
BRUNSWICK COUNTY
TIP PROJECT R-5021

SHEET 1 OF 6
FIGURE 2














NORTH CAROLINA
DEPARTMENT OF
TRANSPORTATION
DIVISION OF
HIGHWAYS
PROJECT DEVELOPMENT
AND
ENVIRONMENTAL ANALYSIS
UNIT

PRELIMINARY DESIGN
SUBJECT TO CHANGE

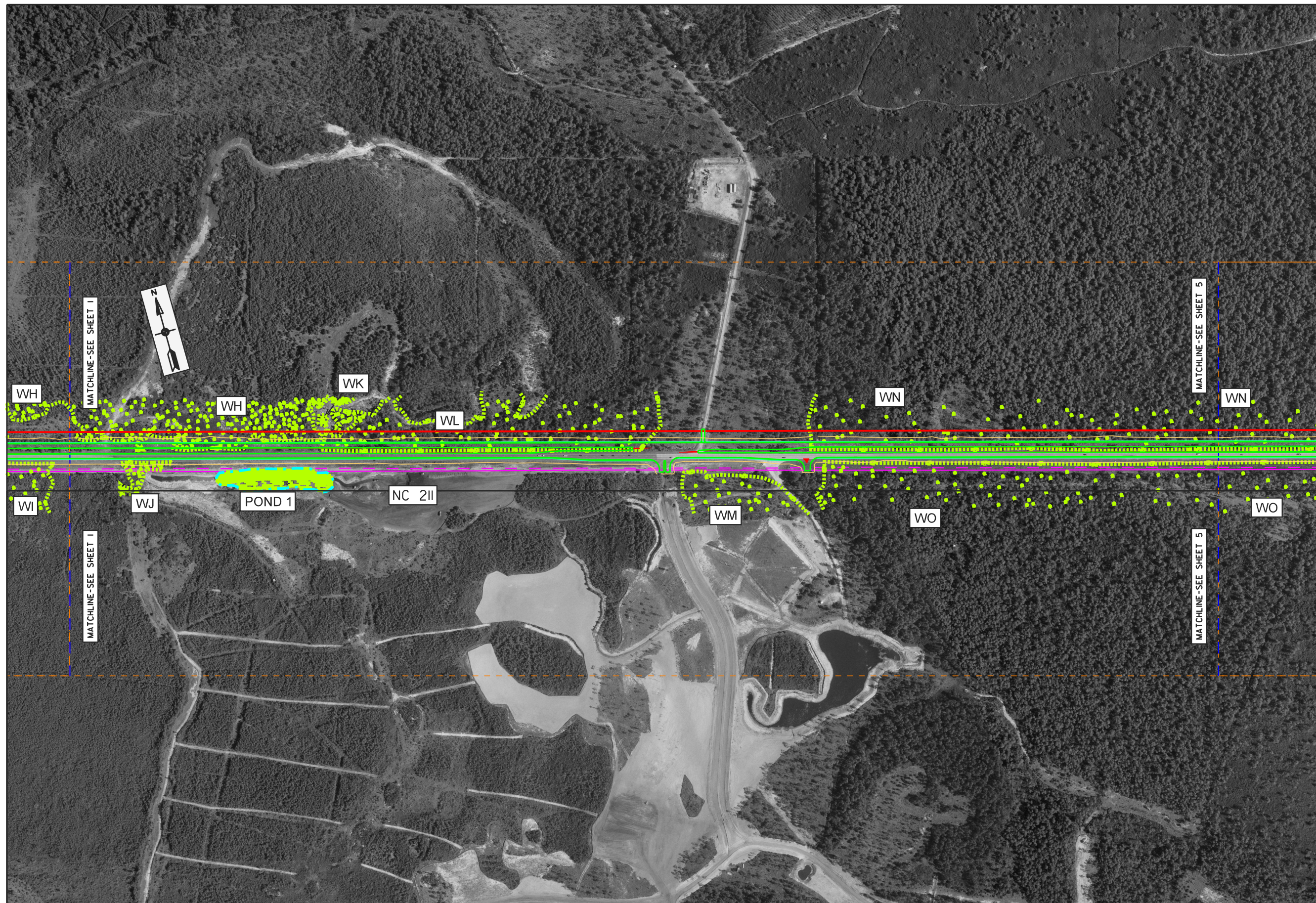
LEGEND

-  EXISTING RIGHT OF WAY
-  PROPOSED PAVEMENT
-  PROPOSED STRUCTURE
-  PROPOSED RIGHT OF WAY
-  PROPOSED SLOPESTAKES
-  IMPROVEMENTS TO BE MADE BY ADJACENT PROJECT
-  EXISTING POWER LINE
-  DELINEATED WETLANDS
-  DELINEATED STREAMS OR OPEN WATER

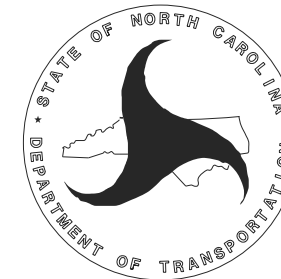


NC 211
FROM
SR 1500 (MIDWAY RD.)
TO NC 87
BRUNSWICK COUNTY
TIP PROJECT R-5021

SHEET 2 OF 6
FIGURE 2



NORTH SIDE WIDENING



NORTH CAROLINA
DEPARTMENT OF
TRANSPORTATION
DIVISION OF
HIGHWAYS
PROJECT DEVELOPMENT
AND
ENVIRONMENTAL ANALYSIS
UNIT

PRELIMINARY DESIGN
SUBJECT TO CHANGE

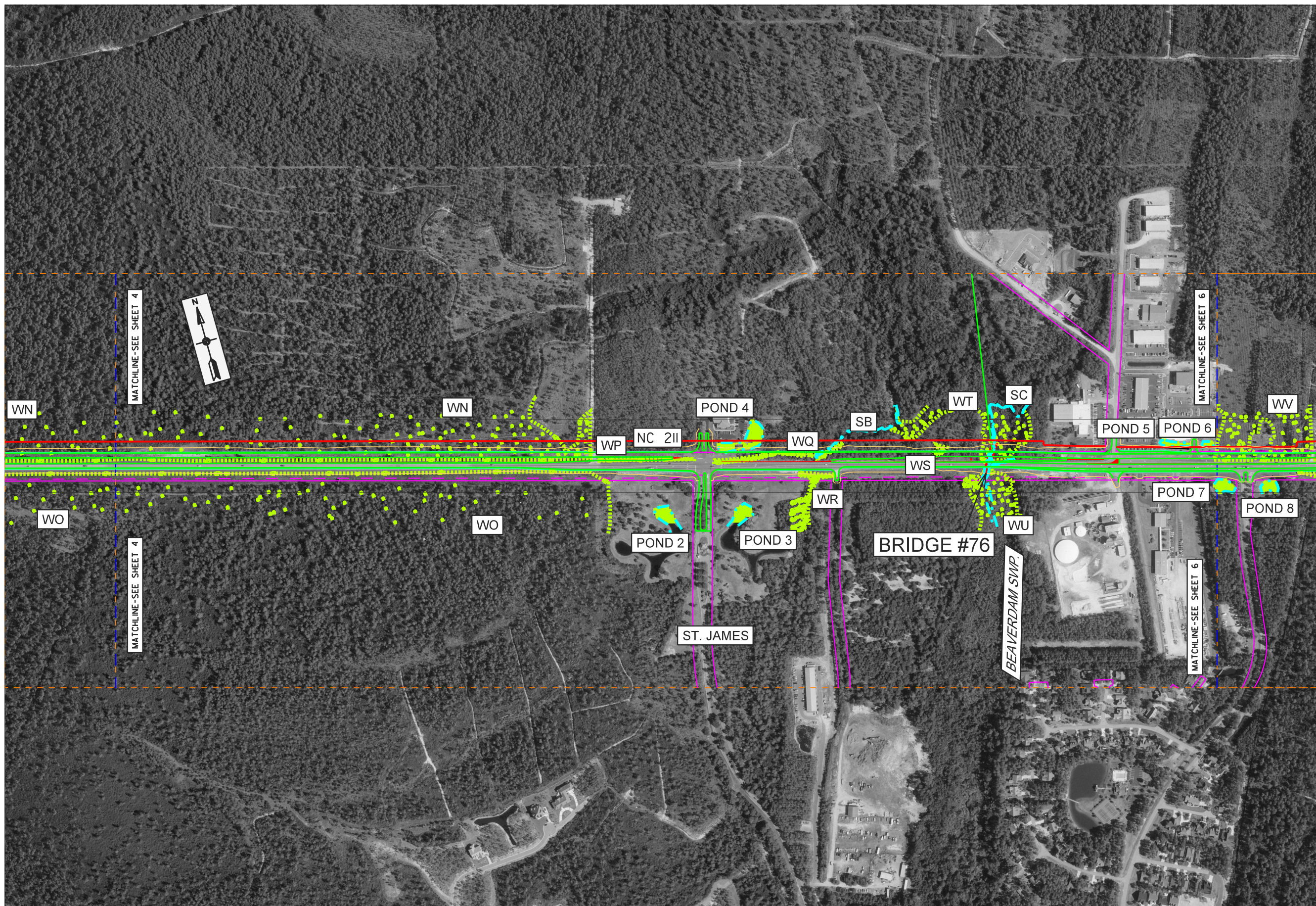
LEGEND

- EXISTING RIGHT OF WAY
- PROPOSED PAVEMENT
- PROPOSED STRUCTURE
- PROPOSED RIGHT OF WAY
- PROPOSED SLOPESTAKES
- IMPROVEMENTS TO BE MADE BY ADJACENT PROJECT
- EXISTING POWER LINE
- DELINEATED WETLANDS
- DELINEATED STREAMS OR OPEN WATER

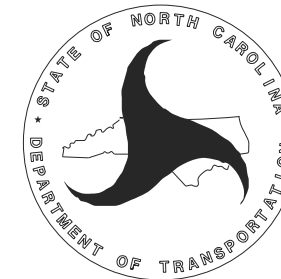


NC 211
FROM
SR 1500 (MIDWAY RD.)
TO NC 87
BRUNSWICK COUNTY
TIP PROJECT R-5021

SHEET 3 OF 6
FIGURE 2



NORTH SIDE WIDENING



NORTH CAROLINA
DEPARTMENT OF
TRANSPORTATION
DIVISION OF
HIGHWAYS
PROJECT DEVELOPMENT
AND
ENVIRONMENTAL ANALYSIS
UNIT

PRELIMINARY DESIGN
SUBJECT TO CHANGE

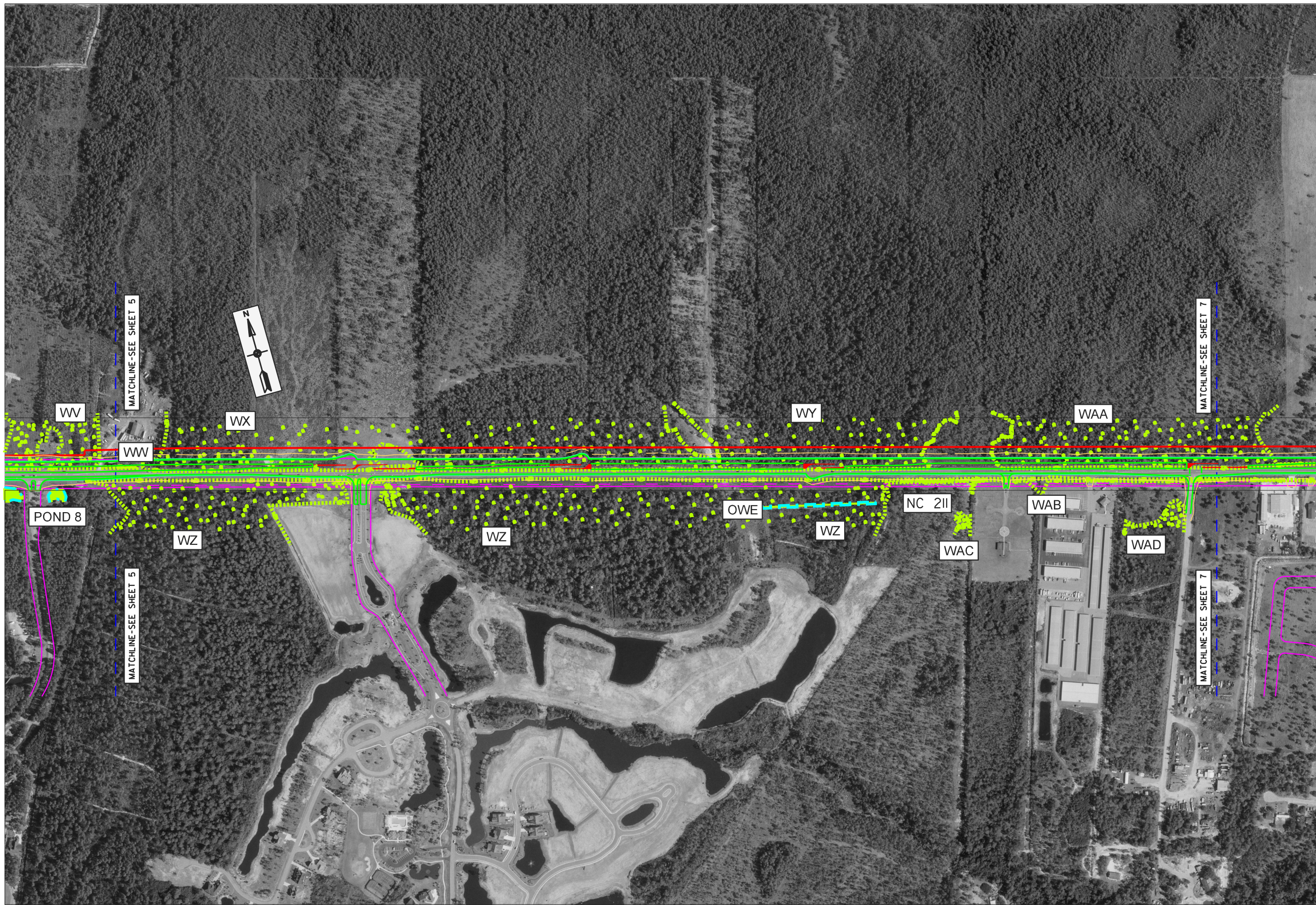
LEGEND

- EXISTING RIGHT OF WAY
- PROPOSED PAVEMENT
- PROPOSED STRUCTURE
- PROPOSED RIGHT OF WAY
- PROPOSED SLOPESTAKES
- IMPROVEMENTS TO BE MADE BY ADJACENT PROJECT
- EXISTING POWER LINE
- DELINEATED WETLANDS
- DELINEATED STREAMS OR OPEN WATER

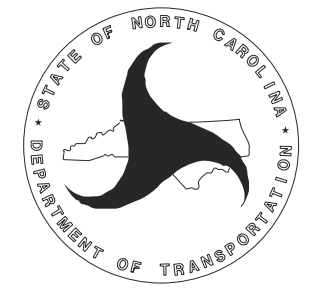
0 FEET 500

NC 211
FROM
SR 1500 (MIDWAY RD.)
TO NC 87
BRUNSWICK COUNTY
TIP PROJECT R-5021

SHEET 4 OF 6
FIGURE 2



NORTH SIDE WIDENING



NORTH CAROLINA
DEPARTMENT OF
TRANSPORTATION
DIVISION OF
HIGHWAYS
PROJECT DEVELOPMENT
AND
ENVIRONMENTAL ANALYSIS
UNIT

PRELIMINARY DESIGN
SUBJECT TO CHANGE

- LEGEND**
- EXISTING RIGHT OF WAY
 - PROPOSED PAVEMENT
 - PROPOSED STRUCTURE
 - PROPOSED RIGHT OF WAY
 - PROPOSED SLOPESTAKES
 - IMPROVEMENTS TO BE MADE BY ADJACENT PROJECT
 - - - EXISTING POWER LINE
 - DELINEATED WETLANDS
 - DELINEATED STREAMS OR OPEN WATER



NC 211
FROM
SR 1500 (MIDWAY RD.)
TO NC 87
BRUNSWICK COUNTY
TIP PROJECT R-5021

SHEET 5 OF 6
FIGURE 2

TIP PROJECT R-3324
(NOT A PART OF
THIS STUDY)

2-BARREL
CULVERT

SECTION 2
SECTION 3

SECTION 2
SECTION 3

MATCHLINE-SEE SHEET 8
POND 10
WAAH

WAI
POND 9
WAF

DUTCHMANS CRK

MATCHLINE-SEE SHEET 6

WAB

MATCHLINE-SEE SHEET 6

NC 211-133

NC 133

WAG

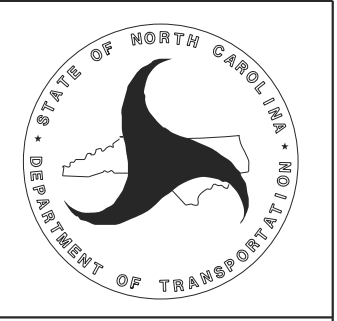
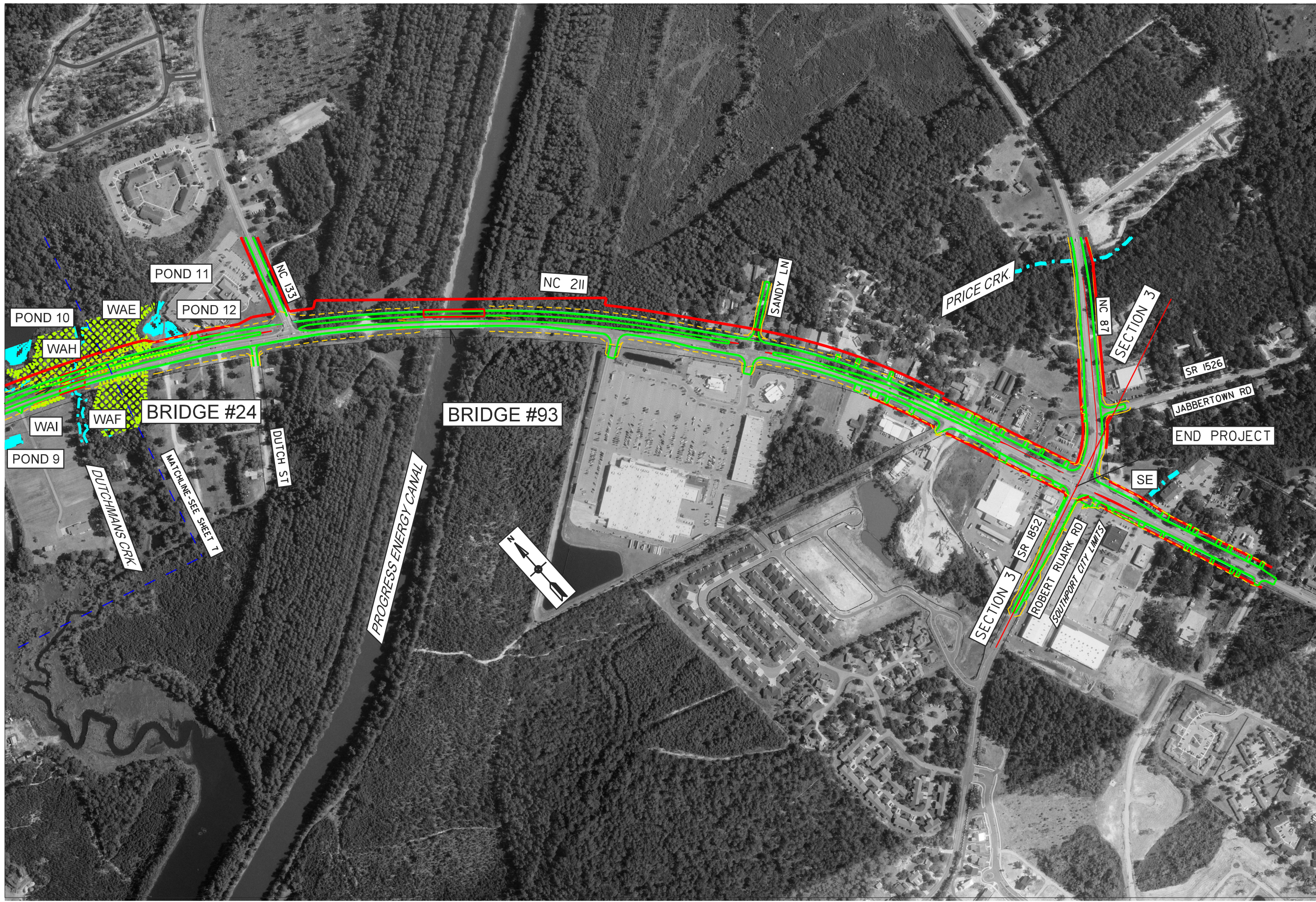
MATCHLINE-SEE SHEET 8

SD

SD



NORTH SIDE WIDENING



NORTH CAROLINA
DEPARTMENT OF
TRANSPORTATION
DIVISION OF
HIGHWAYS
PROJECT DEVELOPMENT
AND
ENVIRONMENTAL ANALYSIS
UNIT

PRELIMINARY DESIGN
SUBJECT TO CHANGE

- LEGEND**
- EXISTING RIGHT OF WAY
 - PROPOSED PAVEMENT
 - PROPOSED STRUCTURE
 - PROPOSED RIGHT OF WAY
 - PROPOSED SLOPESTAKES
 - IMPROVEMENTS TO BE MADE BY ADJACENT PROJECT
 - EXISTING POWER LINE
 - DELINEATED WETLANDS
 - DELINEATED STREAMS OR OPEN WATER



NC 211
FROM
SR 1500 (MIDWAY RD.)
TO NC 87
BRUNSWICK COUNTY
TIP PROJECT R-5021

SHEET 6 OF 6
FIGURE 2