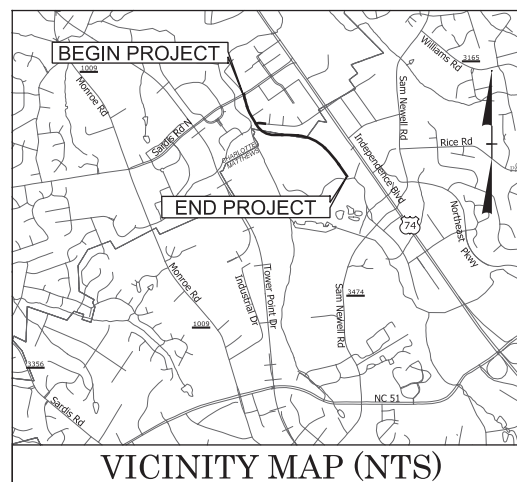


09/08/25

TIP PROJECT: U-2509EB

CONTRACT:

See Sheet 1A For Index of Sheets



CP4B PLAN

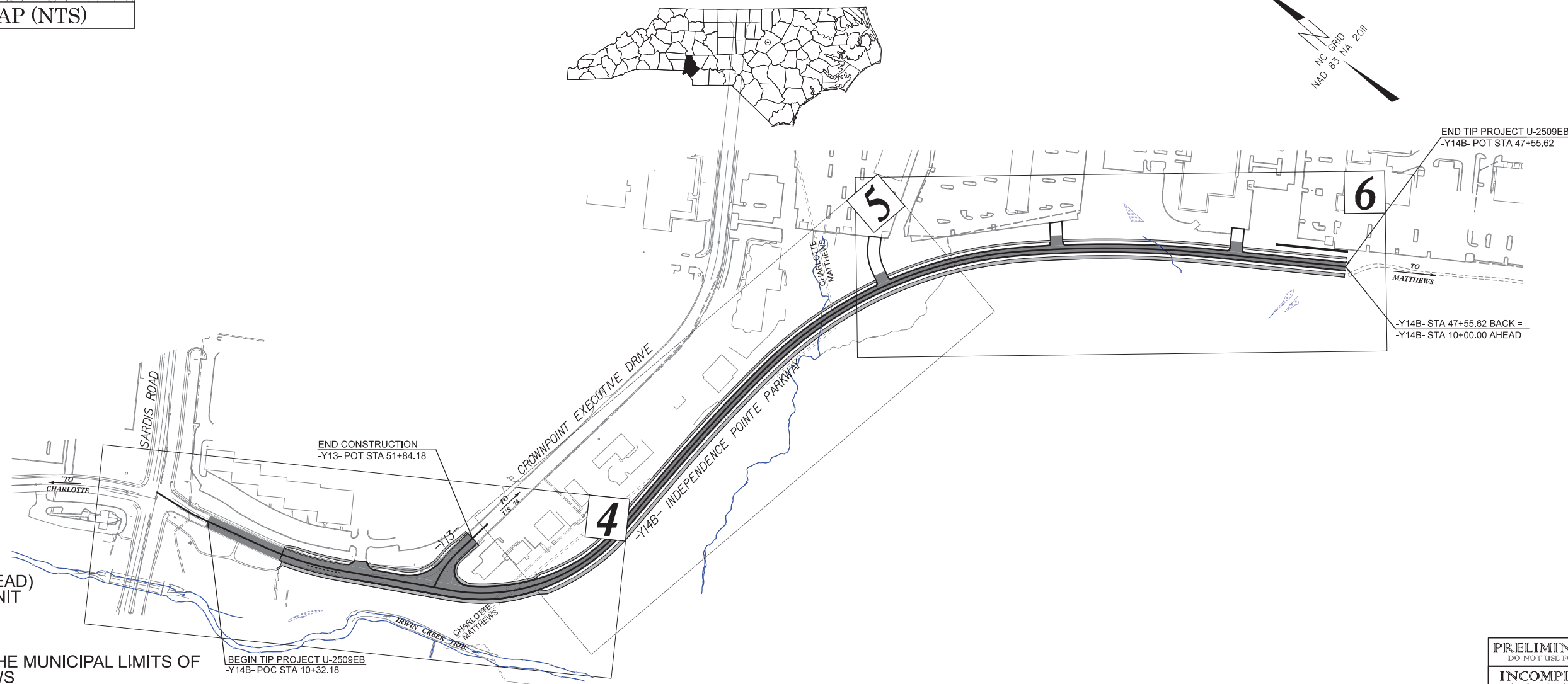
STATE OF NORTH CAROLINA DIVISION OF HIGHWAYS

MECKLENBURG COUNTY

LOCATION: *INDEPENDENCE POINTE PARKWAY FROM
CROWNPOINT EXECUTIVE DRIVE TO RICE ROAD*

CP4B PLAN (1-22-25)

| STATE | STATE PROJECT REFERENCE NO. | SHEET NO. | TOTAL SHEETS |
|-----------------|-----------------------------|-------------|--------------|
| N.C. | U-2509EB | 1 | |
| STATE PROJ. NO. | F. A. PROJ. NO. | DESCRIPTION | |
| U-2509EB | N/A | PE | |
| | | | |
| | | | |
| | | | |
| | | | |



NCDOT CONTACT:
BRYAN C. KEY, PE (TEAM LEAD)
PROJECT MANAGEMENT UNIT
(919) 707-6363

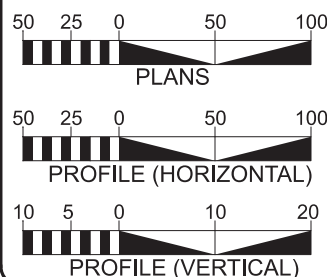
NOTES:
THIS PROJECT IS WITHIN THE MUNICIPAL LIMITS OF
CHARLOTTE AND MATTHEWS
CLEARING ON THIS PROJECT SHALL BE PERFORMED
TO THE LIMITS ESTABLISHED BY MODIFIED METHOD II

PRELIMINARY PLANS
DO NOT USE FOR CONSTRUCTION

INCOMPLETE PLANS
DO NOT USE FOR R/W ACQUISITION

DOCUMENT NOT CONSIDERED FINAL
UNLESS ALL SIGNATURES COMPLETED

GRAPHIC SCALES



DESIGN DATA

ADT 2027 = 3600(LET)
ADT 2047 = 5300
K = 10 %
D = 65 %
T = 3 % *
V = 40 MPH
* TTST = 1% DUAL 2%
FUNC CLASS = LOCAL
REGIONAL TIER

PROJECT LENGTH

LENGTH OF ROADWAY TIP PROJECT U-2509EB = 0.707 MILES
TOTAL LENGTH OF TIP PROJECT U-2509EB = 0.707 MILES

PREPARED IN THE
OFFICE OF:



2024 STANDARD SPECIFICATIONS

RIGHT OF WAY DATE:
JULY 19, 2024

LETTING DATE:
JULY 20, 2027

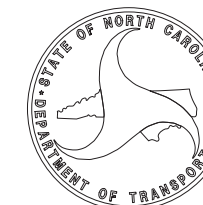
ALLISON C. JOHNSON, P.E.
PROJECT ENGINEER

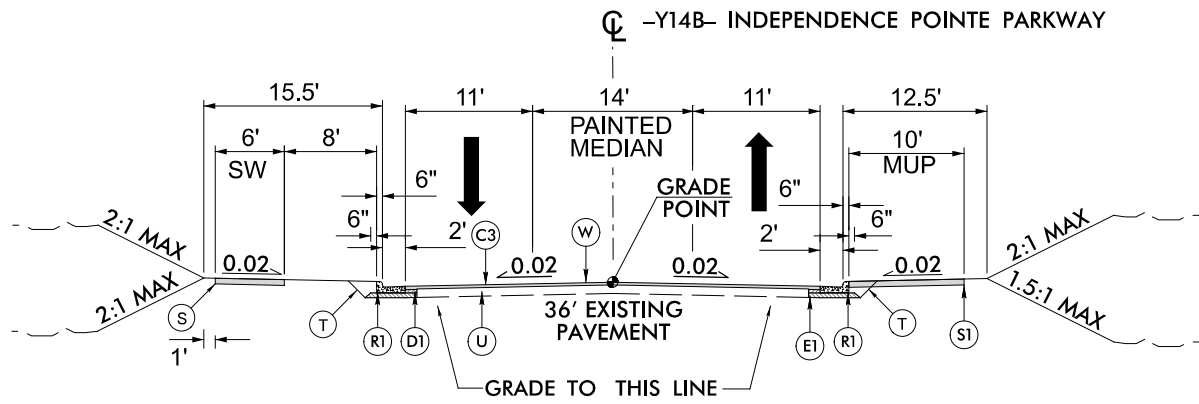
BENJAMIN C. PICKERING II, P.E.
PROJECT DESIGN ENGINEER

HYDRAULICS ENGINEER

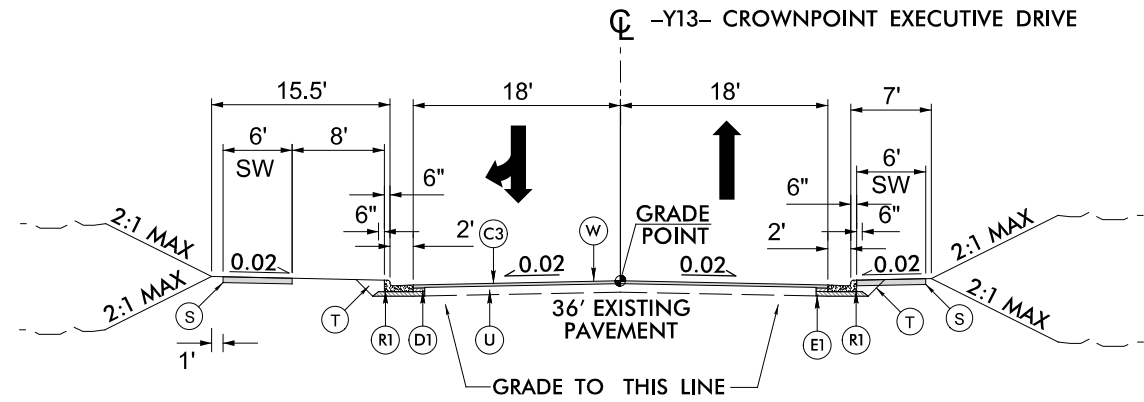
SIGNATURE: _____ P.E.
ROADWAY DESIGN ENGINEER

SIGNATURE: _____ P.E.



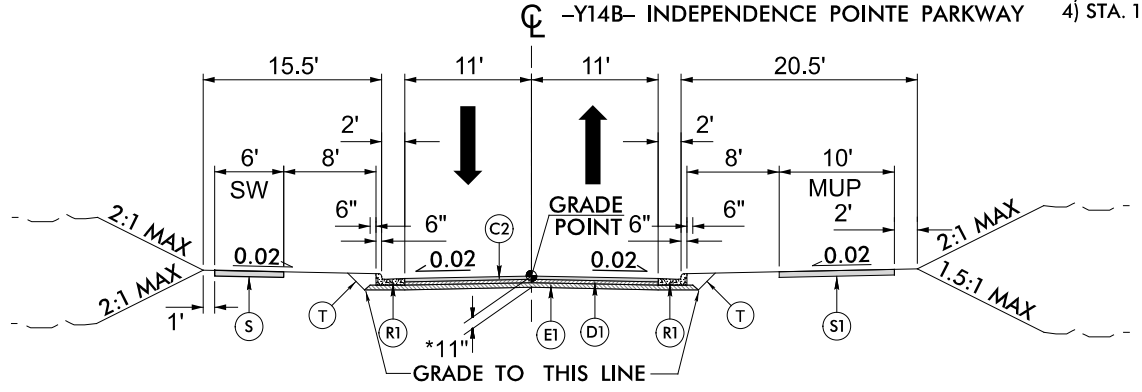


TYPICAL SECTION NO. 1
-Y14B- STA. 12+70.00 TO STA. 15+60.00

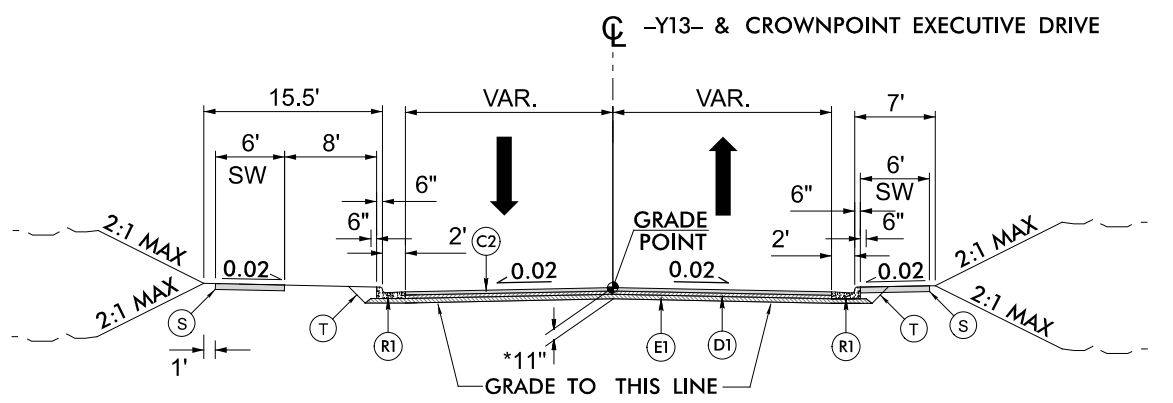


TYPICAL SECTION NO. 4
-Y13- STA. 51+45.00 TO STA. 51+84.18

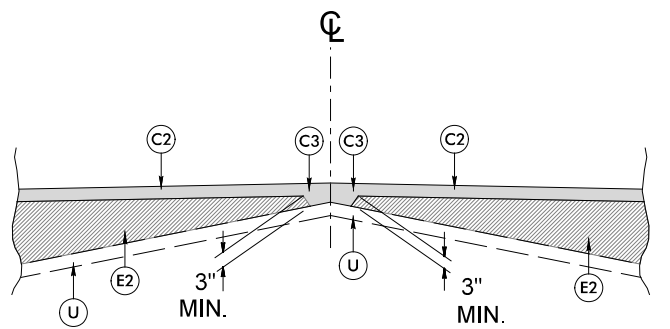
- TYPICAL SECTIONS 1 & 2 NOTES**
- 1) STA. 13+51.50 TO STA. 16+66.50 - LEFT TURN LANE (14')
 - 2) STA. 18+25.72 TO STA. 21+90.96 - PAINTED MEDIAN (VARIES 0'-14')
 - 3) STA. 15+60.00 TO STA. 20+25.74 - NO PLANTING STRIP (RIGHT SIDE)
 - 4) STA. 18+25.72 TO STA. 20+25.74 - NO PLANTING STRIP (LEFT SIDE)



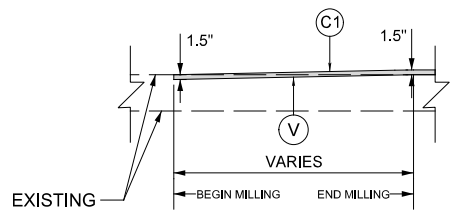
TYPICAL SECTION NO. 2
-Y14B- STA. 15+60.00 TO STA. 47+55.62



TYPICAL SECTION NO. 3
-Y13- STA. 50+18.64 TO STA. 51+45.00



DETAIL SHOWING METHOD OF WEDGING



MILLING DETAIL
INCIDENTAL MILLING AT BEGIN/END FOR TIE-INS

*(PAVEMENT DESIGN HAS NOT BEEN RECEIVED)

| PAVEMENT SCHEDULE | |
|-------------------|---|
| ITEM | DESCRIPTION |
| C1 | PROP. APPROX. 1.5" ASPHALT CONCRETE SURFACE COURSE, TYPE S9.5B. AT AN AVERAGE RATE OF 168 LBS. PER SQ. YARD. |
| C2 | PROP. APPROX. 3" ASPHALT CONCRETE SURFACE COURSE, TYPE S9.5B. AT AN AVERAGE RATE OF 168 LBS. PER SQ. YARD. IN EACH OF TWO LAYERS. |
| C3 | PROP. VARIABLE DEPTH ASPHALT CONCRETE SURFACE COURSE, TYPE S9.5B. AT AN AVERAGE RATE OF 112 LBS. PER SQ. YARD PER INCH. DEPTH TO BE PLACED IN LAYERS NOT LESS THAN 1" IN DEPTH OR GREATER THAN 1.5" IN DEPTH. |
| D1 | PROP. APPROX. 4" ASPHALT CONCRETE INTERMEDIATE COURSE, TYPE I190.0C, AT AN AVERAGE RATE OF 456 LBS. PER SQ. YARD. |
| E1 | PROP. APPROX. 4" ASPHALT CONCRETE BASE COURSE, TYPE B25.0C, AT AN AVERAGE RATE OF 456 LBS. PER SQ. YARD. |
| E2 | PROP. VARIABLE DEPTH ASPHALT CONCRETE BASE COURSE, TYPE B25.0C AT AN AVERAGE RATE OF 114 LBS. PER SQ. YARD. PER INCH. DEPTH TO BE PLACED IN LAYERS NOT LESS THAN 3" IN DEPTH OR GREATER THAN 5.5" IN DEPTH. |
| R1 | PROP. 2'-6" CONCRETE CURB |
| S | 4" CONCRETE SIDEWALK |
| S1 | 4" CONCRETE MULTIUSE PATH |
| T | EARTH MATERIAL |
| U | EXISTING PAVEMENT |
| V | INCIDENTAL MILLING |
| W | WEDGING SEE DETAIL |

U-2509EB
2R01 2A-1
NORTH CAROLINA
DEPARTMENT OF TRANSPORTATION
MECKLENBURG COUNTY

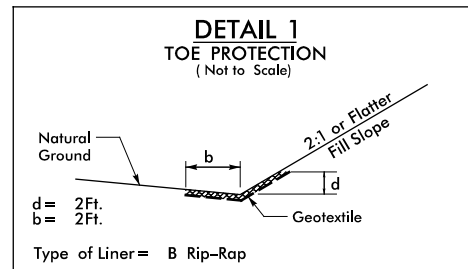
ROADWAY DESIGN UNIT
ROADWAY DESIGN ENGINEER

HYDRAULICS ENGINEER

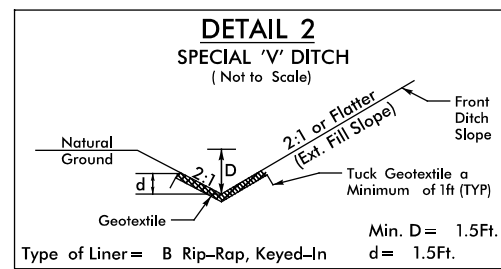
PRELIMINARY PLANS
DO NOT USE FOR CONSTRUCTION
INCOMPLETE PLANS
DO NOT USE FOR PERMITS OR REGISTRATION
DOCUMENT NOT CONSIDERED FINAL
UNLESS ALL SIGNATURES COMPLETED

PREPARED BY
AMERICAN Engineering
8033 Corporate Center Drive, Suite 110
Charlotte, NC 28226 | 704.375.2438

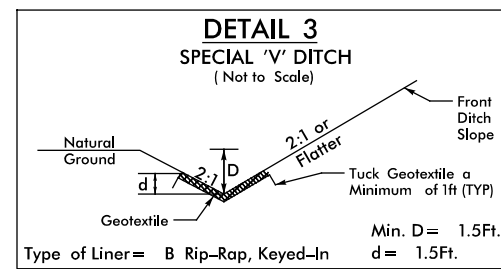
REVISIONS



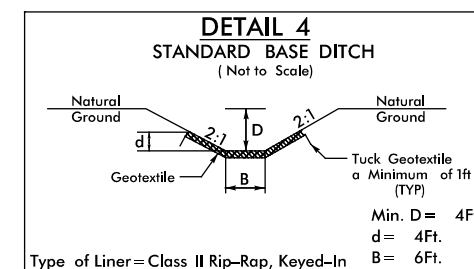
FROM STA. 20+00.00 TO STA. 21+50.00 -Y14B- LT
 FROM STA. 26+50.00 TO STA. 27+50.00 -Y14B- LT
 FROM STA. 29+50.00 TO STA. 31+60.00 -Y14B- LT
 FROM STA. 32+25.00 TO STA. 32+50.00 -Y14B- LT
 FROM STA. 35+00.00 TO STA. 37+00.00 -Y14B- LT
 FROM STA. 39+34.38 TO STA. 39+75.00 -Y14B- LT
 FROM STA. 41+50.00 TO STA. 44+06.17 -Y14B- LT
 FROM STA. 44+57.21 TO STA. 47+62.62 -Y14B- LT
 FROM STA. 19+50.00 TO STA. 21+80.00 -Y14B- RT
 FROM STA. 33+00.00 TO STA. 33+50.00 -Y14B- RT
 FROM STA. 35+00.00 TO STA. 37+50.17 -Y14B- RT
 FROM STA. 42+50.00 TO STA. 43+25.00 -Y14B- RT
 FROM STA. 45+00.00 TO STA. 47+62.62 -Y14B- RT



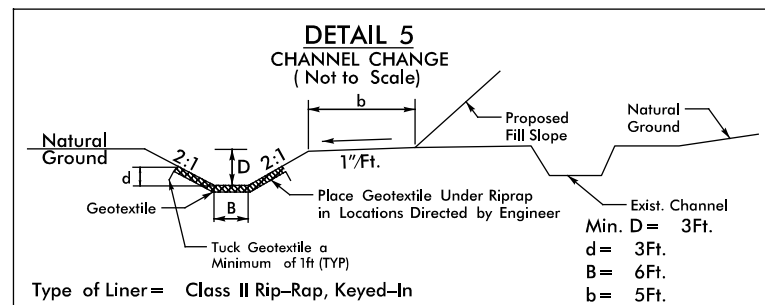
FROM STA. 21+50.00 TO STA. 23+40.00 -Y14B- LT



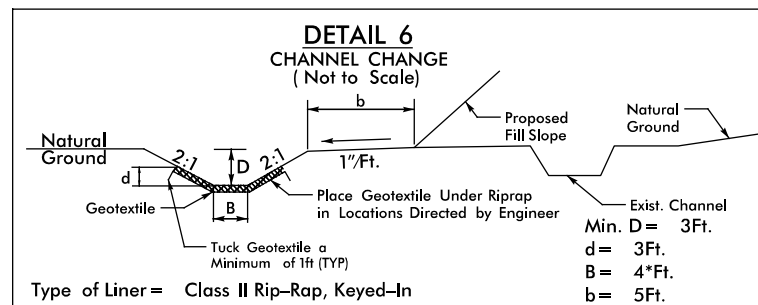
FROM STA. 23+40.00 TO STA. 24+00.00 -Y14B- LT



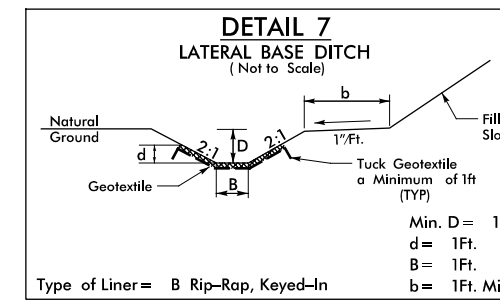
FROM STA. 28+80.50 TO STA. 29+70.00 RT



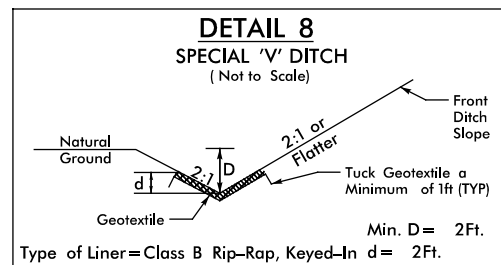
FROM STA. 29+70.00 TO STA. 31+50.00 -Y14B- RT



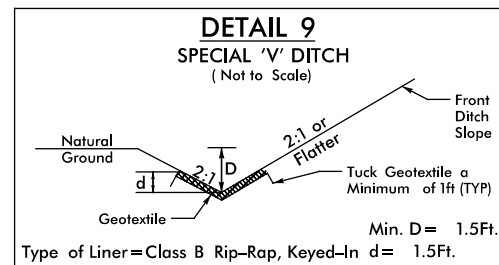
FROM STA. 31+50.00 TO STA. 33+00.00 -Y14B- RT
 *NOTE: FROM STA. 31+50.00 TO STA. 32+00.00 -Y14B- RT
 BASE TRANSITIONES FROM 6Ft. TO 4Ft.



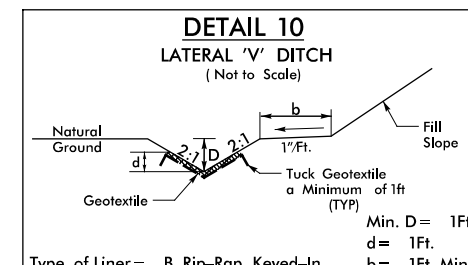
FROM STA. 31+50.00 TO STA. 32+25.00 -Y14B- LT



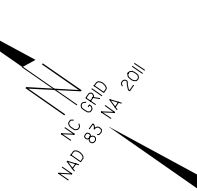
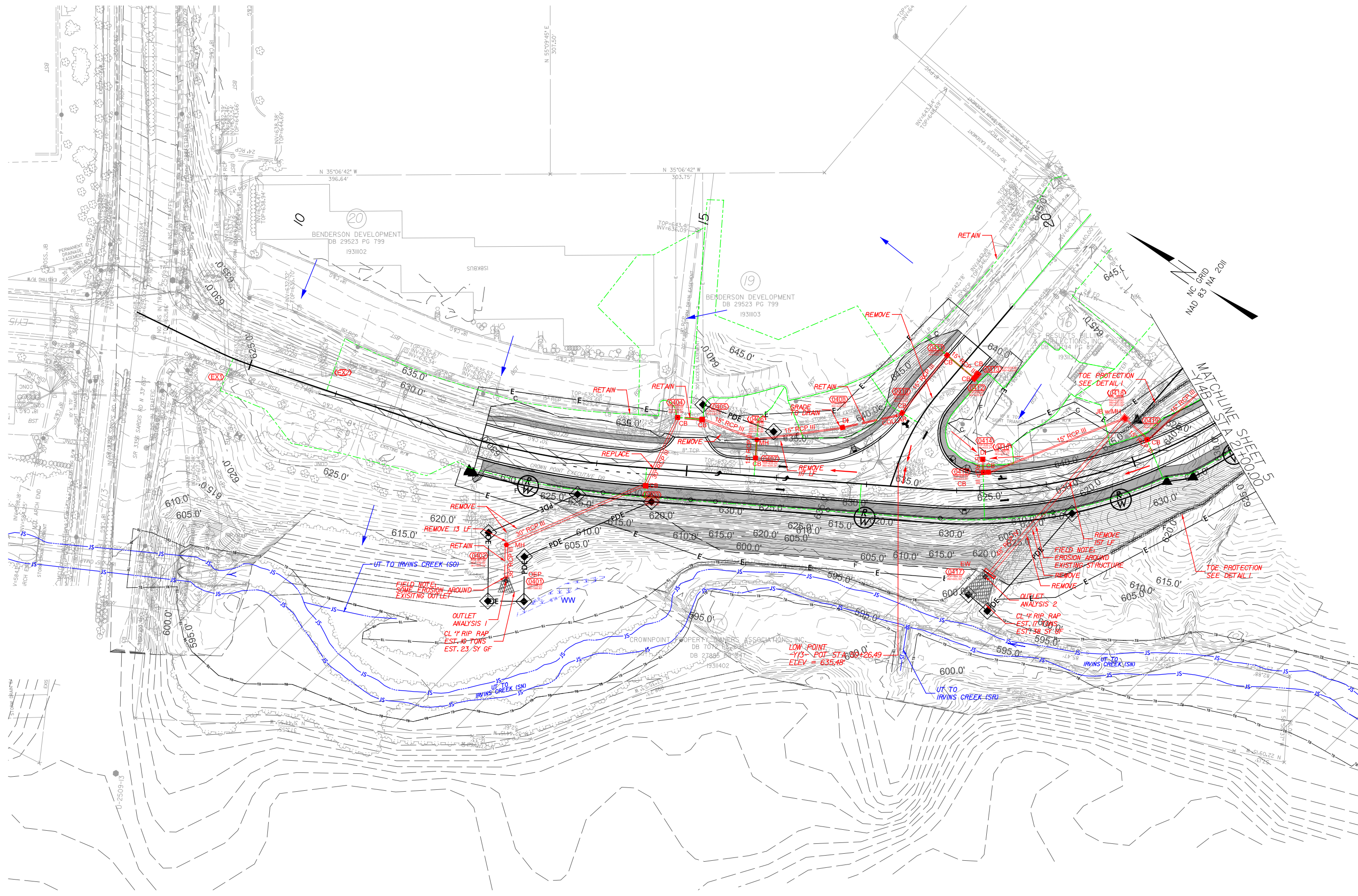
FROM STA. 39+50.00 TO STA. 38+50 -Y14B- RT



FROM STA. 38+50 TO STA. 42+50 -Y14B- RT



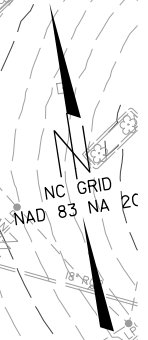
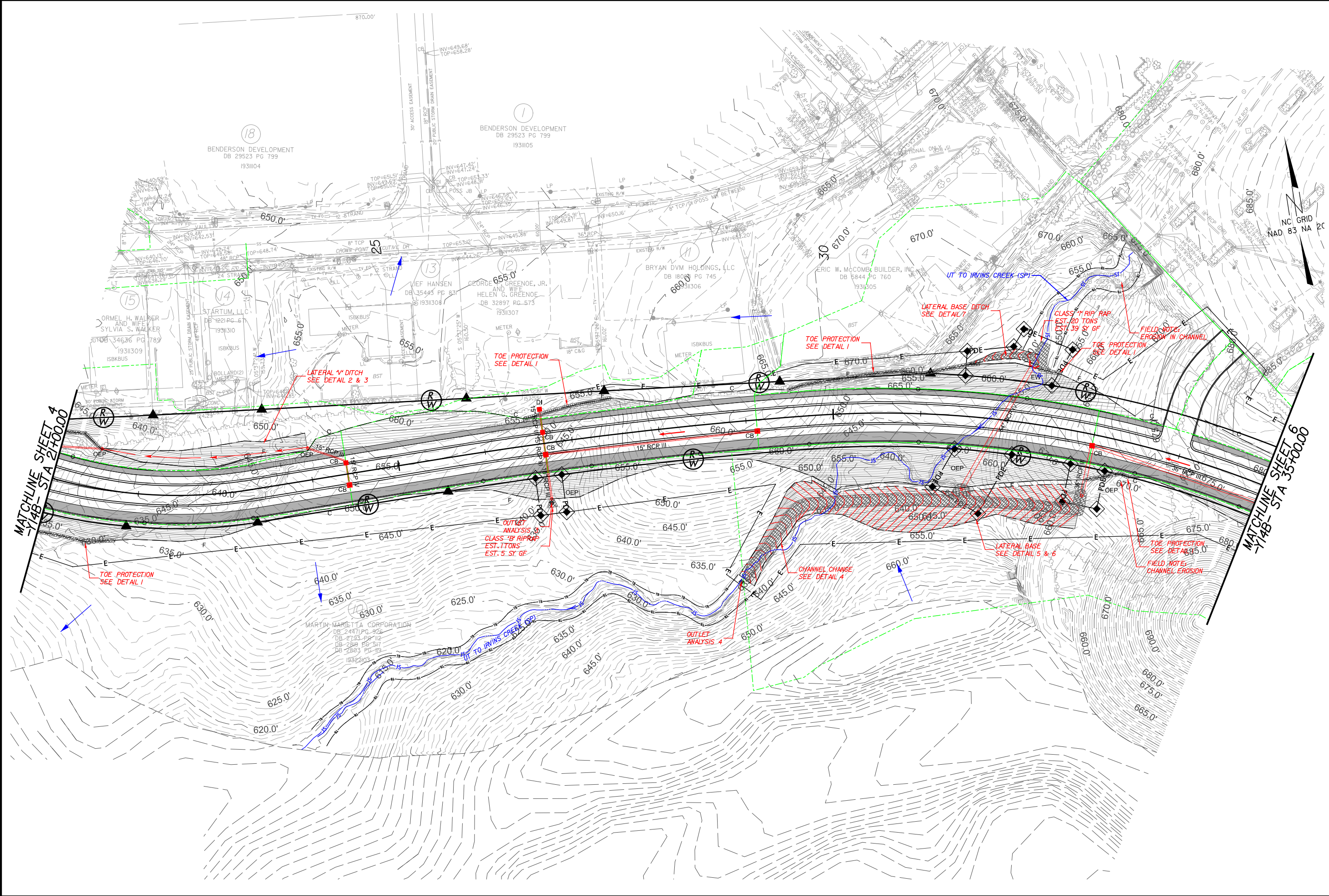
FROM STA. 40+50.00 TO STA. 41+50.00 -Y14B- LT



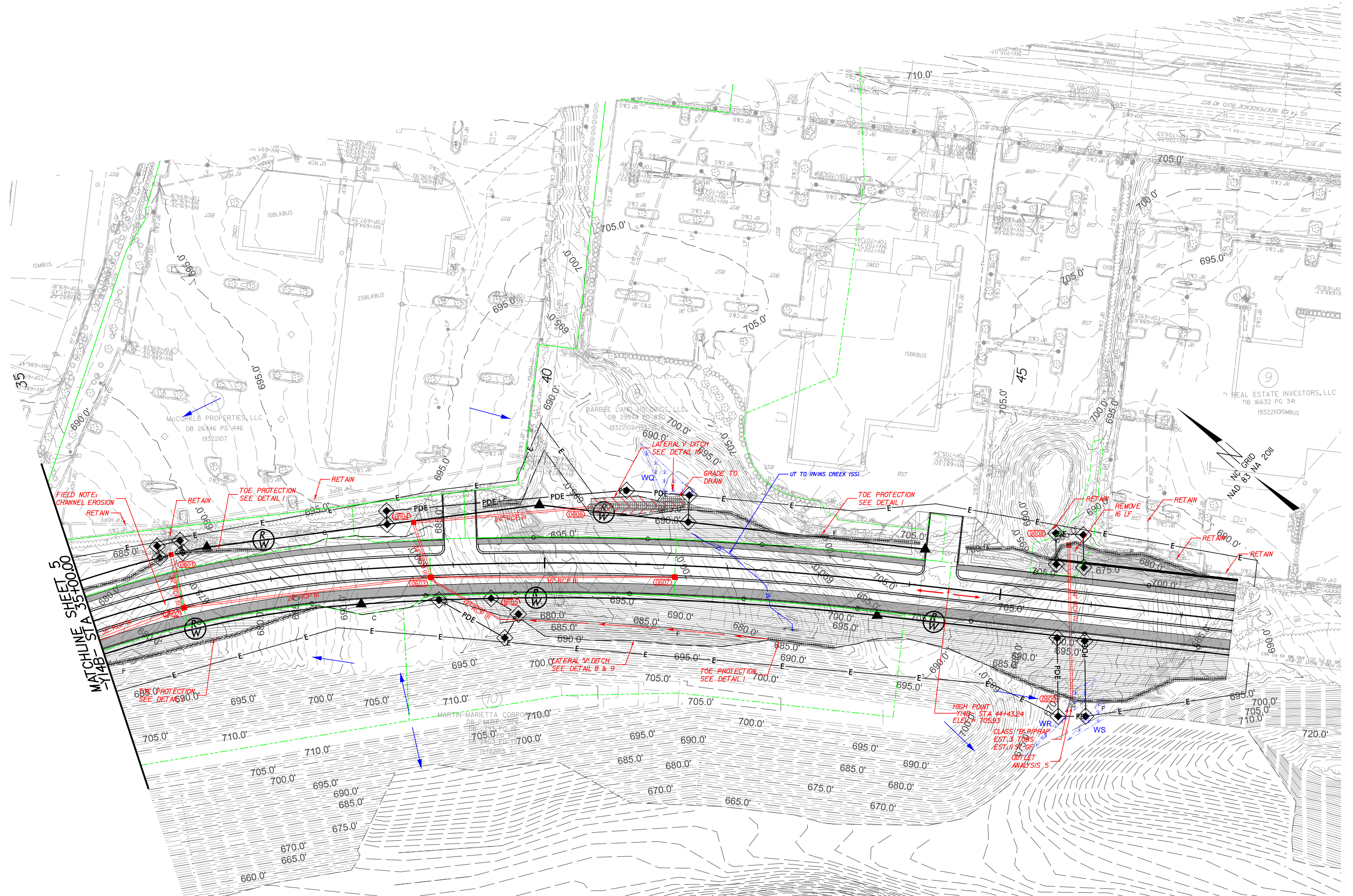
NC GRID
NAD 83 MA 2011

MATCHLINE
SHEET 5
STA 210+00.5

REVISIONS

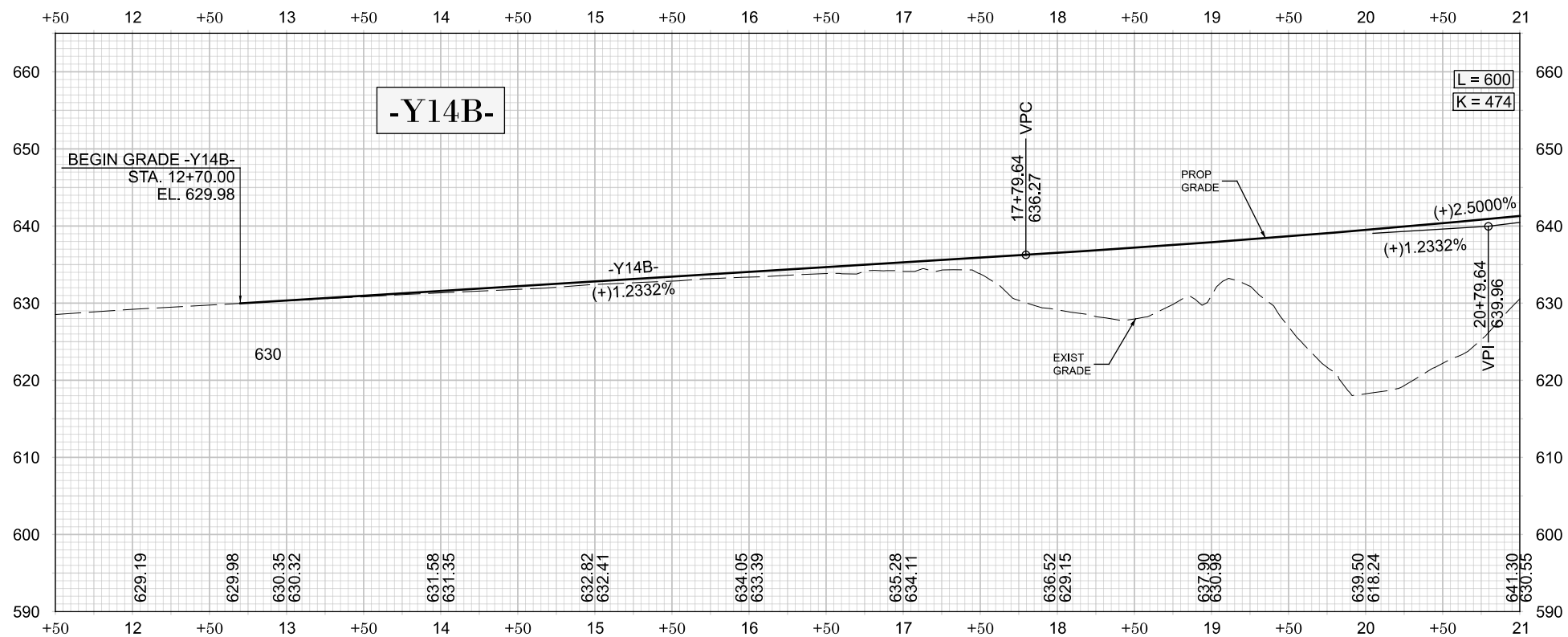
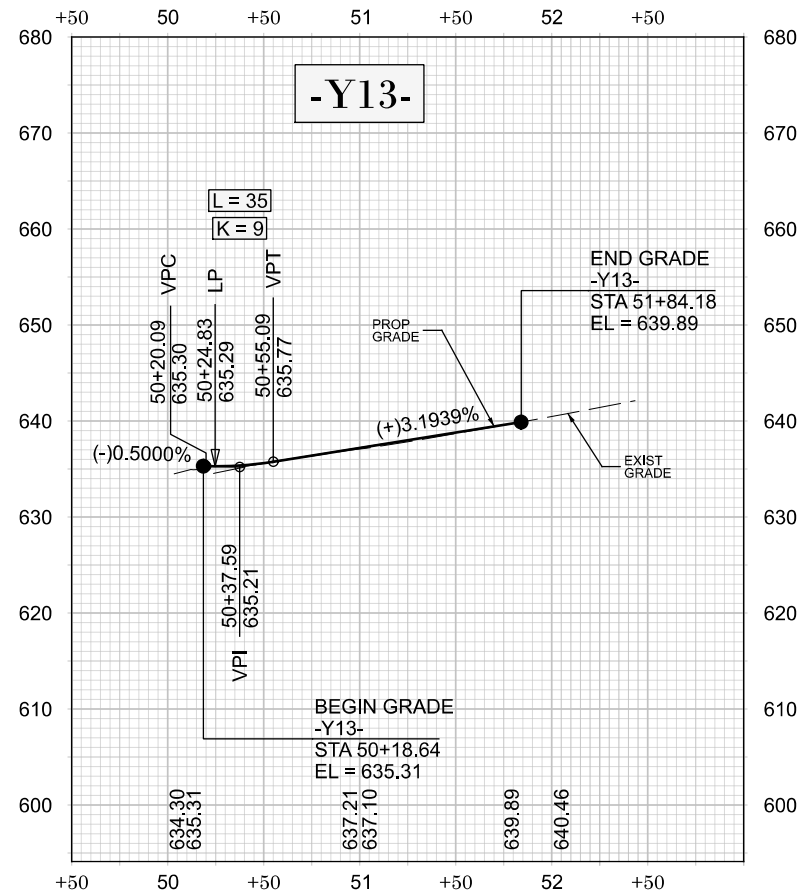


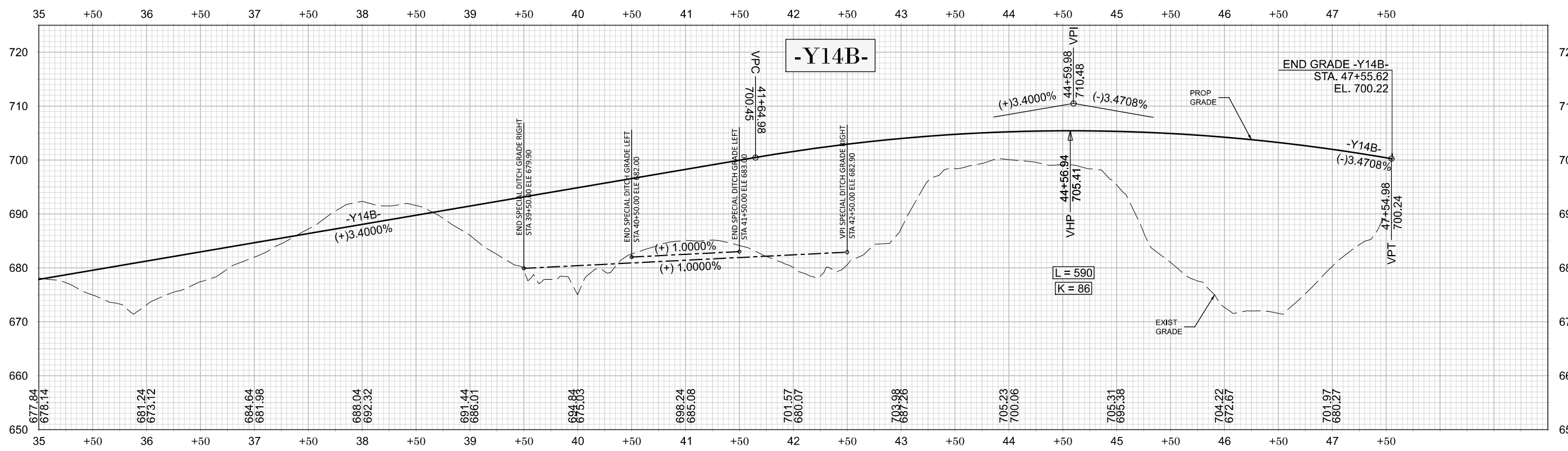
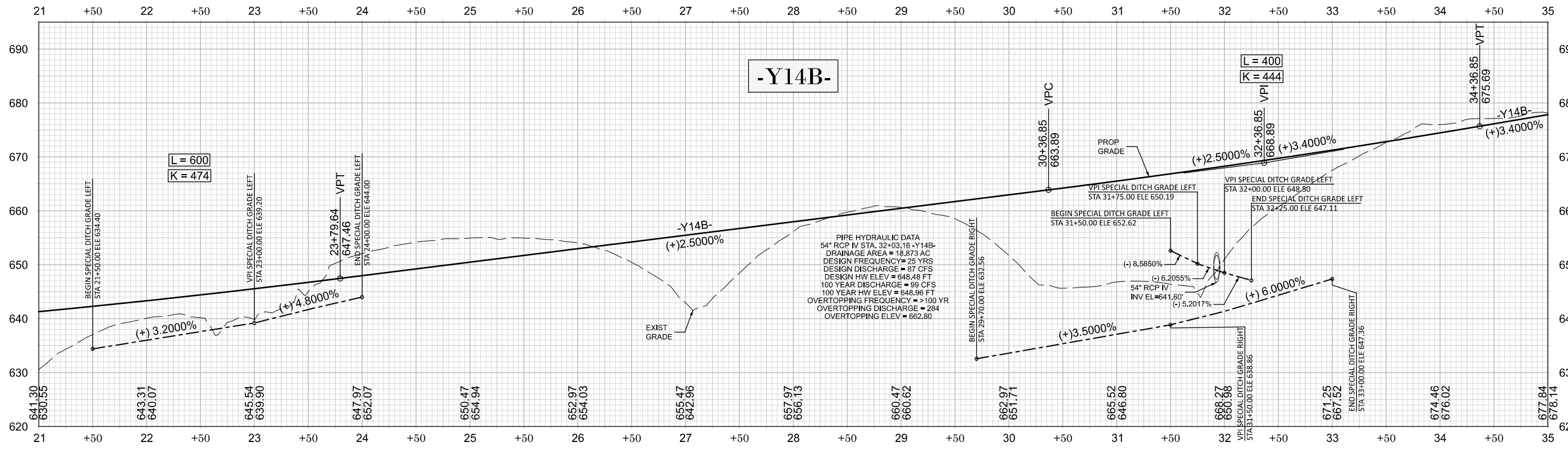
REVISIONS



MATCHLINE SHEET 5
-Y14B- STA 35+00.00

REVISIONS





REVISIONS