

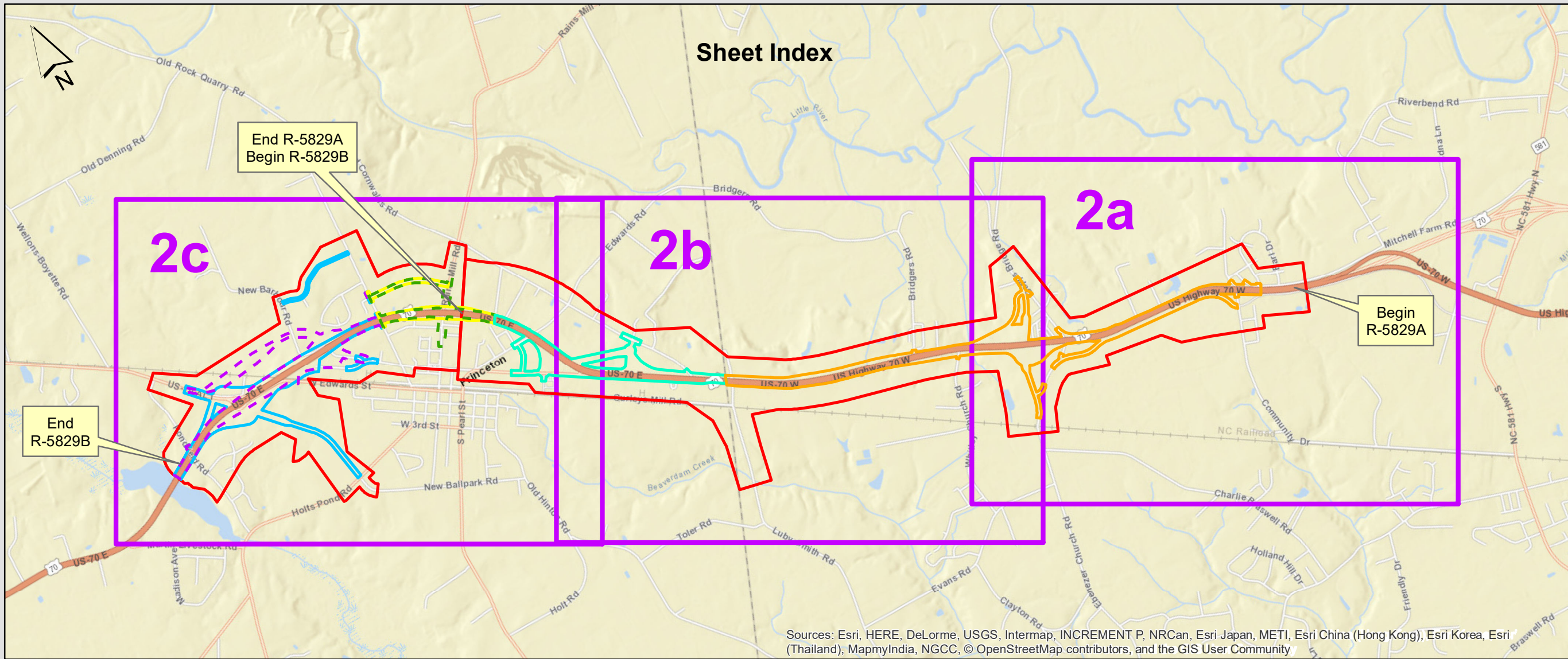
NORTH CAROLINA DEPARTMENT OF TRANSPORTATION
DIVISION OF HIGHWAYS

VICINITY MAP
UPGRADE US 70
TO INTERSTATE STANDARDS
FROM US 70 GOLDSBORO BYPASS
TO WEST OF SR 2314 (PONDFIELD RD)
WAYNE & JOHNSTON COUNTIES
NORTH CAROLINA



County: WAYNE / JOHNSTON	
Div: 4	STIP# R-5829 A&B
WBS:	47101.1.1
Date:	OCTOBER 2017

Figure
1



NORTH CAROLINA DEPARTMENT
OF TRANSPORTATION
DIVISION OF HIGHWAYS

ENVIRONMENTAL FEATURES MAP INDEX

**UPGRADE US 70
TO INTERSTATE STANDARDS
FROM US 70 GOLDSBORO BYPASS
TO WEST OF SR 2314 (PONDFIELD RD)**

WAYNE & JOHNSTON COUNTIES
NORTH CAROLINA

By:
C ROWELLS

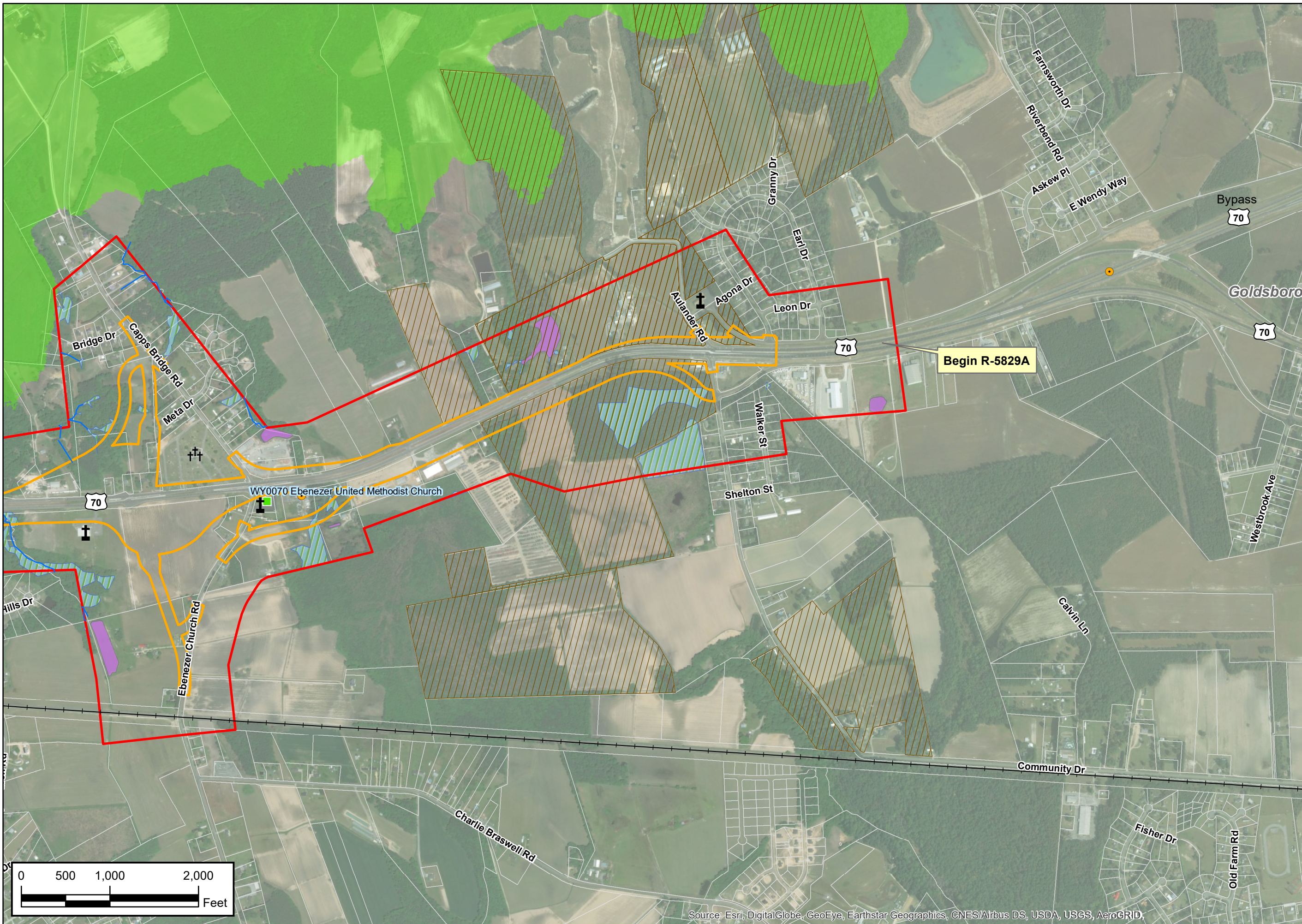
County:
WAYNE / JOHNSTON

Div: 4	STIP# R-5829A&B
-----------	--------------------

Date:
JANUARY 2018

Figure

Legend			
R-5829 Study Area	Place of Worship	Historic Properties	Impact Areas
Delineated Wetlands	Cemetery	National Register Point	R-5829A Wayne County
Delineated Streams	Fire Department	Study List Individual Point	R-5829A East Princeton
Delineated Ponds	School	Study List District	R-5829B Rains Mill Rd under US 70
Flood Hazard - FEMA	Town Hall	National Register Boundary	R-5829B Dr Donnie H Jones Jr Blvd Intersection
Parcel Boundary	Underground Storage Tanks	Study List Boundary	R-5829B US 70-A Intersection
Municipal Boundary	Voluntary Agricultural District		
County Boundary	Railroads		



NORTH CAROLINA DEPARTMENT
OF TRANSPORTATION
DIVISION OF HIGHWAYS

ENVIRONMENTAL FEATURES MAP
UPGRADE US 70
TO INTERSTATE STANDARDS
FROM US 70 GOLDSBORO BYPASS
TO WEST OF SR 2314 (PONDFIELD RD)
WAYNE & JOHNSTON COUNTIES
NORTH CAROLINA



By:
C ROWELLS

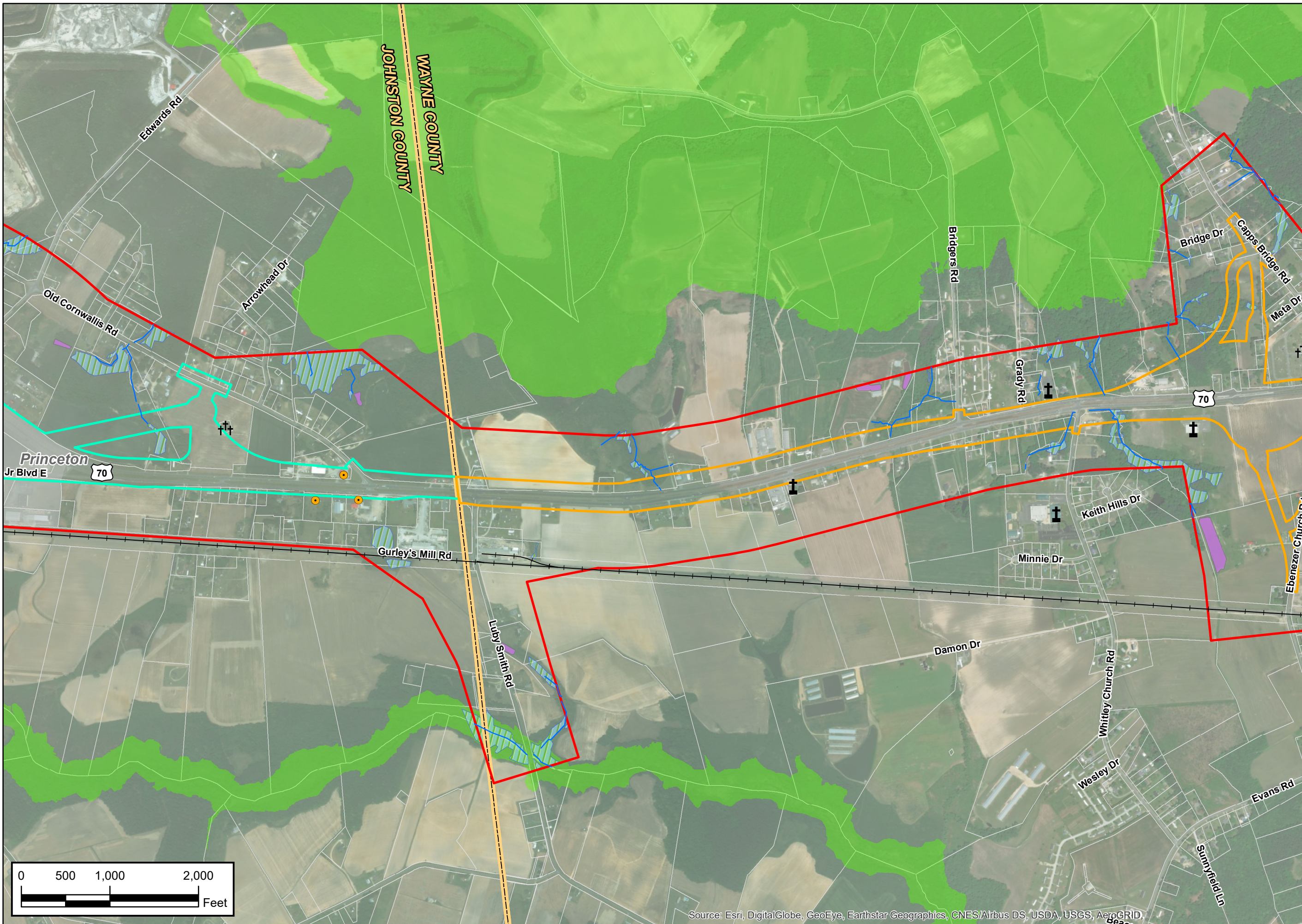
County:
WAYNE / JOHNSTON

Div: 4	STIP# R-5829A&B
-----------	--------------------

Date:
JANUARY 2018

Figure
2a

Source: Esri, DigitalGlobe, GeoEye, Earthstar Geographics, CNES/Airbus DS, USDA, USGS, AeroGRID,



Source: Esri, DigitalGlobe, GeoEye, Earthstar Geographics, CNES/Airbus DS, USDA, USGS, AeroGRID,



NORTH CAROLINA DEPARTMENT
OF TRANSPORTATION
DIVISION OF HIGHWAYS

ENVIRONMENTAL FEATURES MAP
UPGRADE US 70
TO INTERSTATE STANDARDS
FROM US 70 GOLDSBORO BYPASS
TO WEST OF SR 2314 (PONDFIELD RD)
WAYNE & JOHNSTON COUNTIES
NORTH CAROLINA



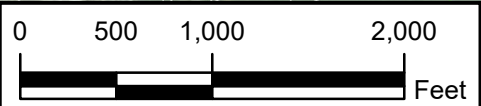
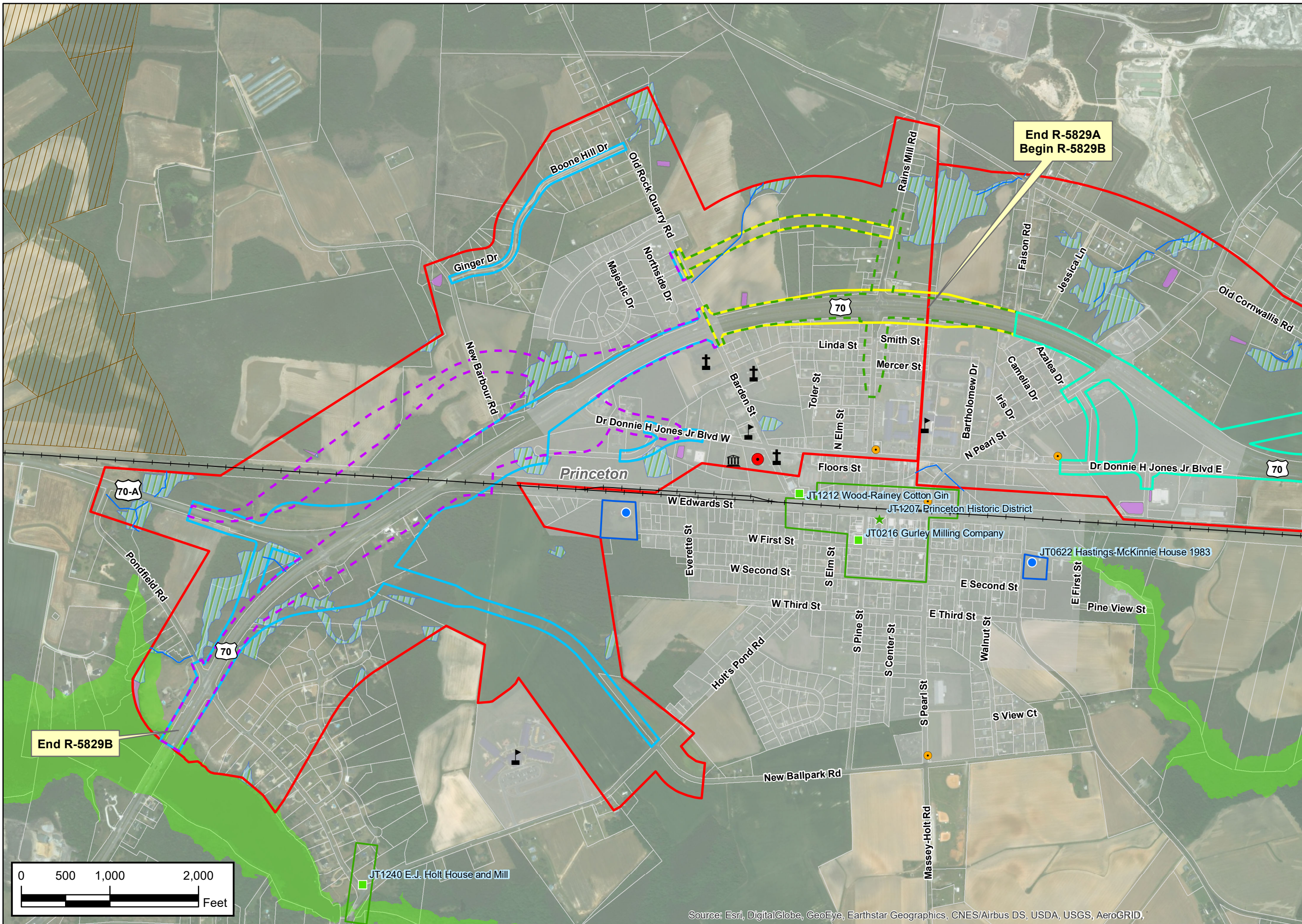
By:
C ROWELLS

County:
WAYNE / JOHNSTON

Div: 4	STIP# R-5829A&B
-----------	--------------------

Date:
JANUARY 2018

Figure
2b



Source: Esri, DigitalGlobe, GeoEye, Earthstar Geographics, CNES/Airbus DS, USDA, USGS, AeroGRID,



NORTH CAROLINA DEPARTMENT
OF TRANSPORTATION
DIVISION OF HIGHWAYS

ENVIRONMENTAL FEATURES MAP
UPGRADE US 70
TO INTERSTATE STANDARDS
FROM US 70 GOLDSBORO BYPASS
TO WEST OF SR 2314 (PONDFIELD RD)

WAYNE & JOHNSTON COUNTIES
NORTH CAROLINA



By:
C ROWELLS

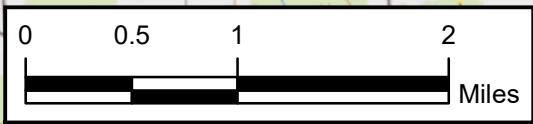
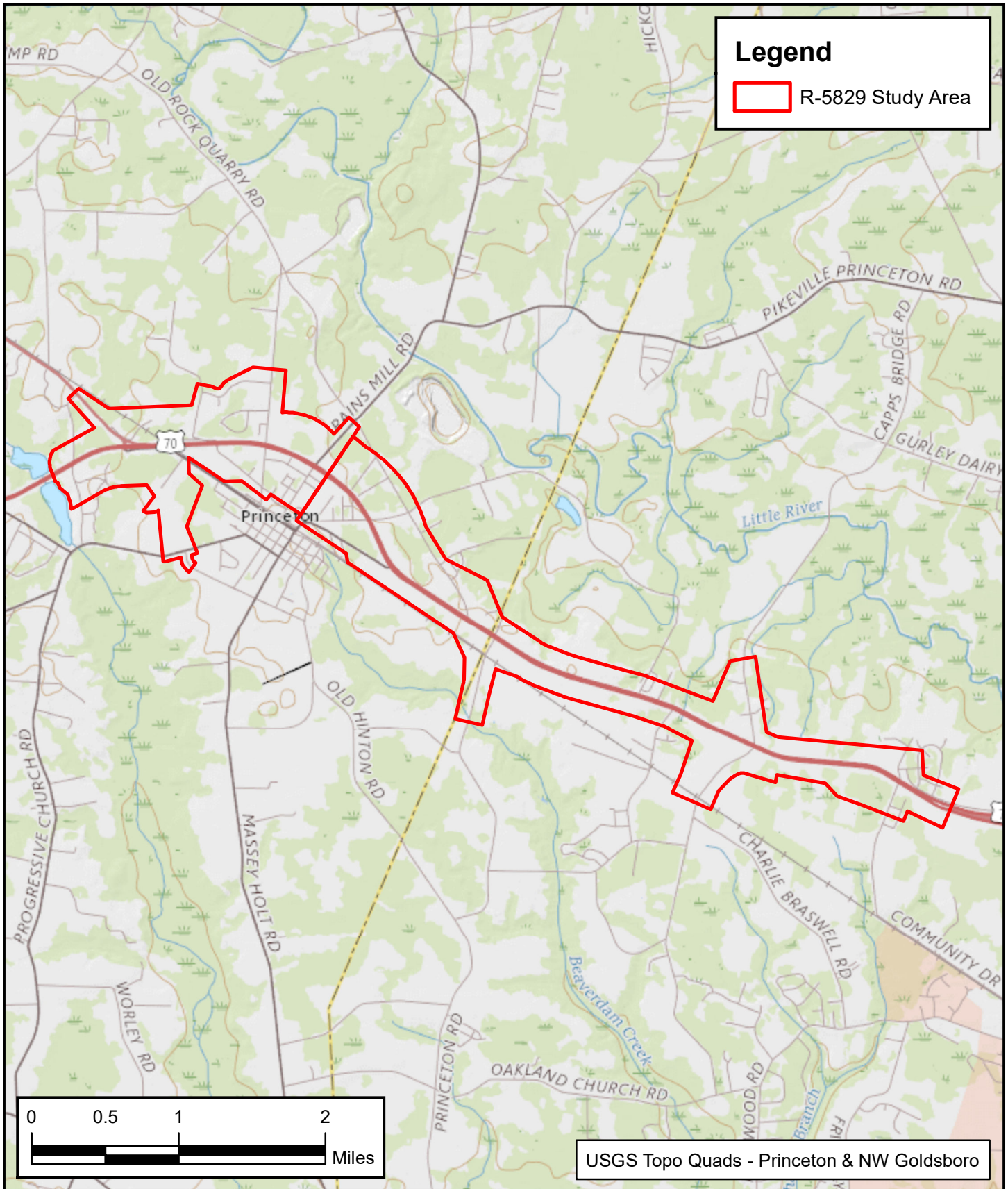
County:
WAYNE / JOHNSTON

Div: 4 STIP# R-5829A&B

Date:
JANUARY 2018

Figure

2c



USGS Topo Quads - Princeton & NW Goldsboro



NORTH CAROLINA DEPARTMENT
OF TRANSPORTATION
DIVISION OF HIGHWAYS

**USGS TOPO MAP
UPGRADE US 70
TO INTERSTATE STANDARDS
FROM US 70 GOLDSBORO BYPASS
TO WEST OF SR 2314 (PONDFIELD RD)
WAYNE & JOHNSTON COUNTIES
NORTH CAROLINA**



County: WAYNE / JOHNSTON	
Div: 4	STIP# R-5829 A&B
WBS:	47101.1.1
Date:	OCTOBER 2017

**Figure
3**