

STIP PROJECT R-4751
NEPA/404 Merger Concurrence Point 1 (Purpose and Need)
US 19 (Governor's Island Road) Improvements
SWAIN COUNTY

Introduction and Project Location

A planning, environmental, and engineering study is being conducted for improvements to US 19 (Governors Island Road) from SR 1152 (Hughes Branch Road) in Bryson City to US 19A (SR 1195), Swain County in accordance with the North Carolina Environmental Policy Act (SEPA), as amended.

US 19 is classified as a Major Collector and is a two-lane undivided roadway through the study area. This roadway provides access to institutional, commercial and residential uses within the study area and serves as a major north-south corridor between Bryson City and Cherokee. The proposed project is within the Eastern Band of Cherokee Indian Boundary. **See Attached Maps.**

The posted speed limit in the study area varies from 20 miles per hours (mph) to 45 mph. The terrain along US 19 is mostly mountainous and the existing roadway and shoulders widths are below current design standards.

The proposed project was divided into 3 sections and is approximately 6 miles long:

Section 1: US 19 (Governors Island Road) from SR 1152 (Hughes Branch Road) to SR 1159 (Veterans Road).

Section 2: US 19 (Governors Island Road) from SR 1159 (Veterans Road) to Great Smoky Mountain Railroad.

Section 3: US 19 (Governors Island Road) from the Great Smoky Mountain Railroad to US 19A (SR 1195).

This packet presents the purpose and need for the project and information to help establish a project study area.

Project Status

A scoping meeting was held on November 30, 2017 at 2:00 PM in Sylva NC, at the NCDOT Division 14 Office.

A meeting was held on April 5, 2018, at 11:00 AM at the NC Division of Transportation (NCDOT) Division 14 Office Building in Sylva, NC, with representatives from the US Army Corps of Engineers (USACE), the Cherokee Nation, the Eastern Band of the Cherokee Indians (EBCI), the United Keetoowah Band of Cherokee Indians (UKB), NC State Historic Preservation Office (NC HPO), the NC State Office of Archaeology (NC OSA), NCDOT, and TGS Engineers. The purposes of this meeting were to share

information pertaining to the project, discuss historic and natural resources along the project corridor, provide an opportunity for members of the group to express concerns at this point in the process so that NCDOT can factor these concerns into the planning process, and plan further coordination.

Draft Project Schedule

- State EA/ FONSI Approved (SEA/FON) Oct 2019
- R/W Plan Complete Jan 2020
- Division Design Raleigh Let (DDRL) Apr 2021

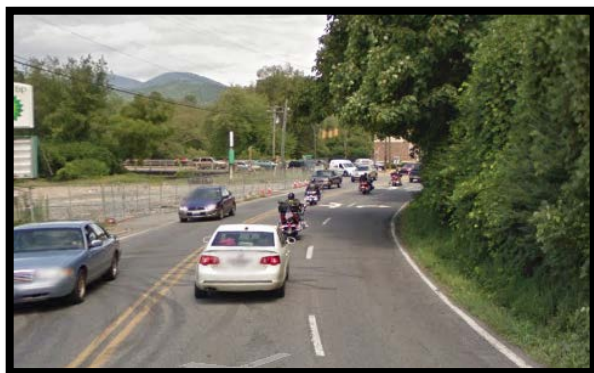
Cost Estimates:

	<u>SECTION 1</u>	<u>SECTION 2</u>	<u>SECTION 3</u>	<u>PROJECT TOTAL</u>
Right of Way:	\$1,200,000	\$500,000	\$1,100,000	\$2,800,000
Construction:	\$4,400,000	\$11,900,000	\$12,600,000	\$28,900,000
TOTAL:	\$5,600,000	\$12,400,000	\$13,700,000	\$31,700.000

Purpose and Need

The purpose of the project is modernization of the existing roadway. The project will address roadway deficiencies, including inadequate lane widths, shoulder widths and poor sight distance. The project will also improve traffic flow on US 19 in the project area.

U.S. 19 is a two-lane road with substandard travel lane and shoulder widths. There is limited sight distance along some sections of the roadway due to the horizontal and vertical alignment (curves and steep grades or crests) in some sections of the roadway. There are also problems with the alignment of intersecting roadways, which are offset or skewed. In addition, the crash rate along U.S. 19 in the project corridor is higher than the statewide average for similar roadways.



U.S. 19 Limited Sight Distance and Inadequate Shoulders

Long Range and Local Plans

Improvements for U.S. 19 have been identified in the 2012 Swain County Comprehensive Transportation Plan.

Swain County anticipates a redevelopment of downtown Bryson City in the future, particularly near the open area/parking lot for the Great Smoky Mountain Railroad, along the Tuckasegee riverfront, and near Island Park. Additionally, opportunities for commercial development exist along US 19 and West Deep Creek Road, among other roads, surrounding Bryson City. Residential growth is expected in the greater surrounding areas and mountains.

Traffic Data

US 19 is a two-lane undivided roadway through the study area. The roadway has a speed limit of 35 miles per hour (mph) west of the Slope Street intersection, a speed limit of 20 mph between Slope Street and Everett Street, a speed limit of 35 mph between Everett Street and Walker Woody Road, and a speed limit of 45 mph east of the Walker Woody Road intersection. Per NCDOT, the 2015 AADT along US 19 was 11,000 vehicles per day (vpd) west of Slope Street, 7,400 vpd east of Everett Street, and 4,900 vpd east of Hyatt Creek Road (SR 1168).

ROUTE	US 19 west of Slope Street	US 19 east of Hyatt Creek Road
ADT 2017 =	11,300	5,100
ADT 2040 =	15,900	7,200
TTST	1%	1%
DUALS	3%	3%
DHV	10%	10%
DIR	55%	55%

Crash Analysis

Five-year crash data (4/1/2012 – 3/31/2017) was obtained from the NCDOT for US 19 from Hughes Branch Road (SR 1152) to US 19A (SR 1195).

Rate	Crashes	Crashes per 100 MVM	Statewide Rate ¹	Critical Rate ²
Total	147	227.97	146.62	147.94
Fatal	0	0.00	1.67	0.00
Non-Fatal Injury	39	60.47	44.86	46.29
Night	18	27.91	53.33	55.62
Wet	25	38.76	26.22	27.59

¹2013-2015 statewide crash rate for rural 2-lane, undivided US Routes in North Carolina

²Based on the statewide crash rate (95% level of confidence)

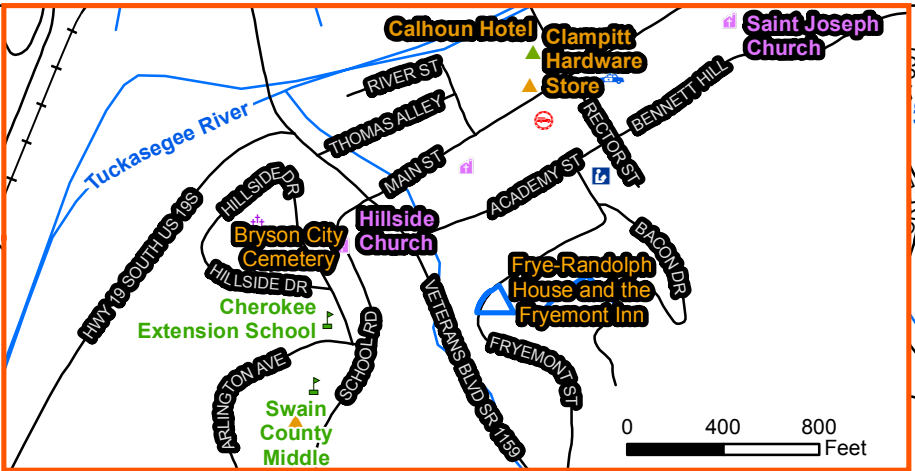
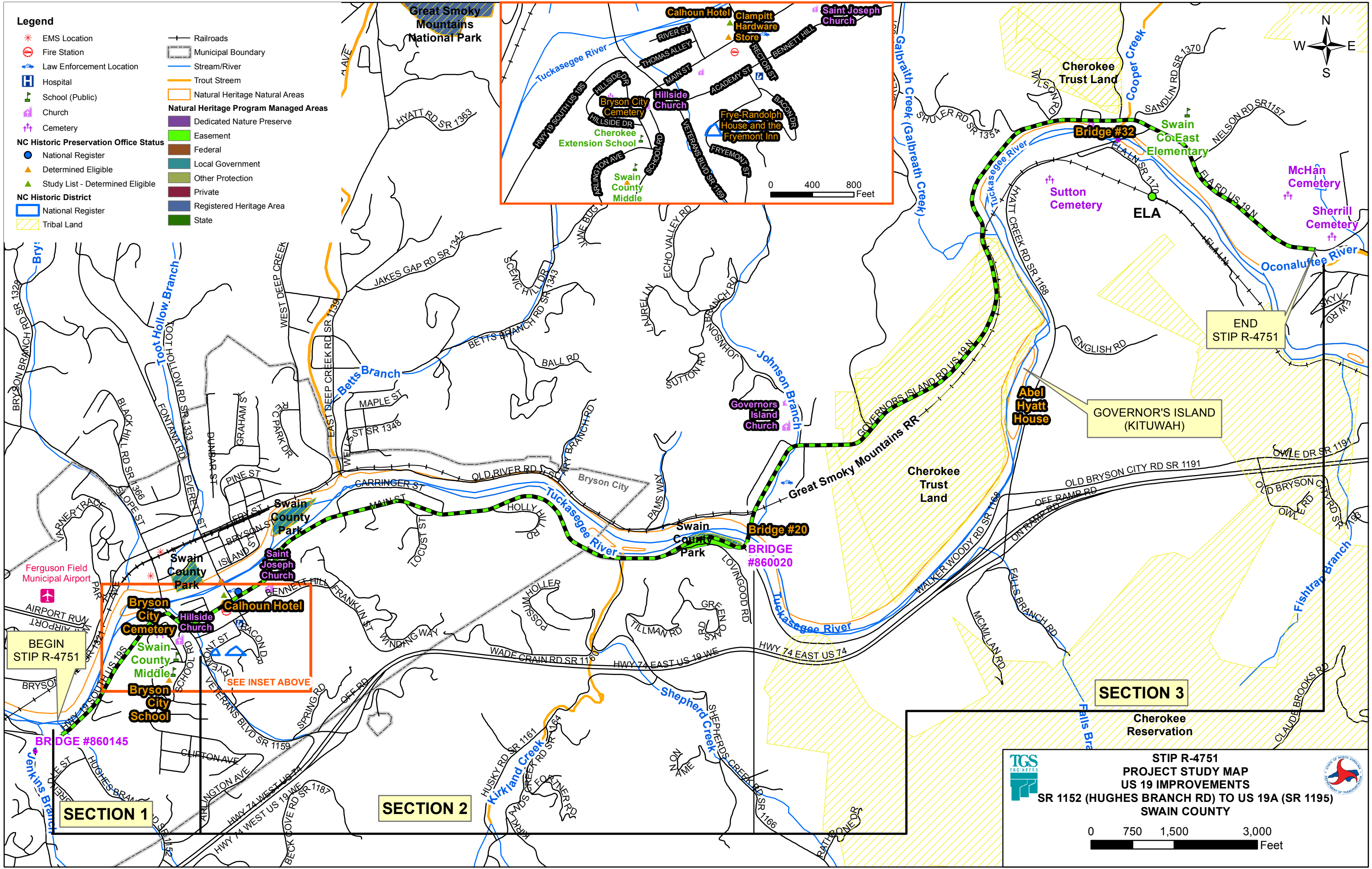
Legend

- EMS Location
 - Fire Station
 - Law Enforcement Location
 - Hospital
 - School (Public)
 - Church
 - Cemetery
- Railroads
 - Municipal Boundary
 - Stream/River
 - Trout Stream
 - Natural Heritage Natural Areas
- Natural Heritage Program Managed Areas**

 - Dedicated Nature Preserve
 - Easement
 - Federal
 - Local Government
 - Other Protection
 - Private
 - Registered Heritage Area
 - State
- NC Historic Preservation Office Status**

 - National Register
 - Determined Eligible
 - Study List - Determined Eligible
- NC Historic District**

 - National Register
 - Tribal Land



SECTION 1

BEGIN
STIP R-4751

BRIDGE #860145

SEE INSET ABOVE

SECTION 2

SECTION 3

**STIP R-4751
PROJECT STUDY MAP
US 19 IMPROVEMENTS
SR 1152 (HUGHES BRANCH RD) TO US 19A (SR 1195)
SWAIN COUNTY**

0 750 1,500 3,000
Feet

Legend

R-4751 Project Study Area

Dry-cleaning Solvent Clean-up Act Program Sites

UST Incident

Registered UST

Hazardous Waste Site

EMS Location

Fire Station

Law Enforcement Location

Hospital

School (Public)

School (Non-Public)

Church

Cemetery

Nursing Home

NC Historic Preservation Property

NC Historic Preservation Boundary

Sewer Pipes

Water Pipes

Public Water Supply Water Sources

NCDOT Structure

Annual Average Daily Traffic

Railroads

Roads

Parcel Boundary

Municipal Boundary

Natural Heritage Program Managed Areas

Dedicated Nature Preserve

Easement

Federal

Local Government

Other Protection

Private

Registered Heritage Area

State

Natural Heritage Natural Areas

Wetland Type

Freshwater Emergent Wetland

Freshwater Forested/Shrub Wetland

Freshwater Pond

Lake

Riverine

Other

Streams/Rivers

Flood Hazard Zones

100-year Flood Zone

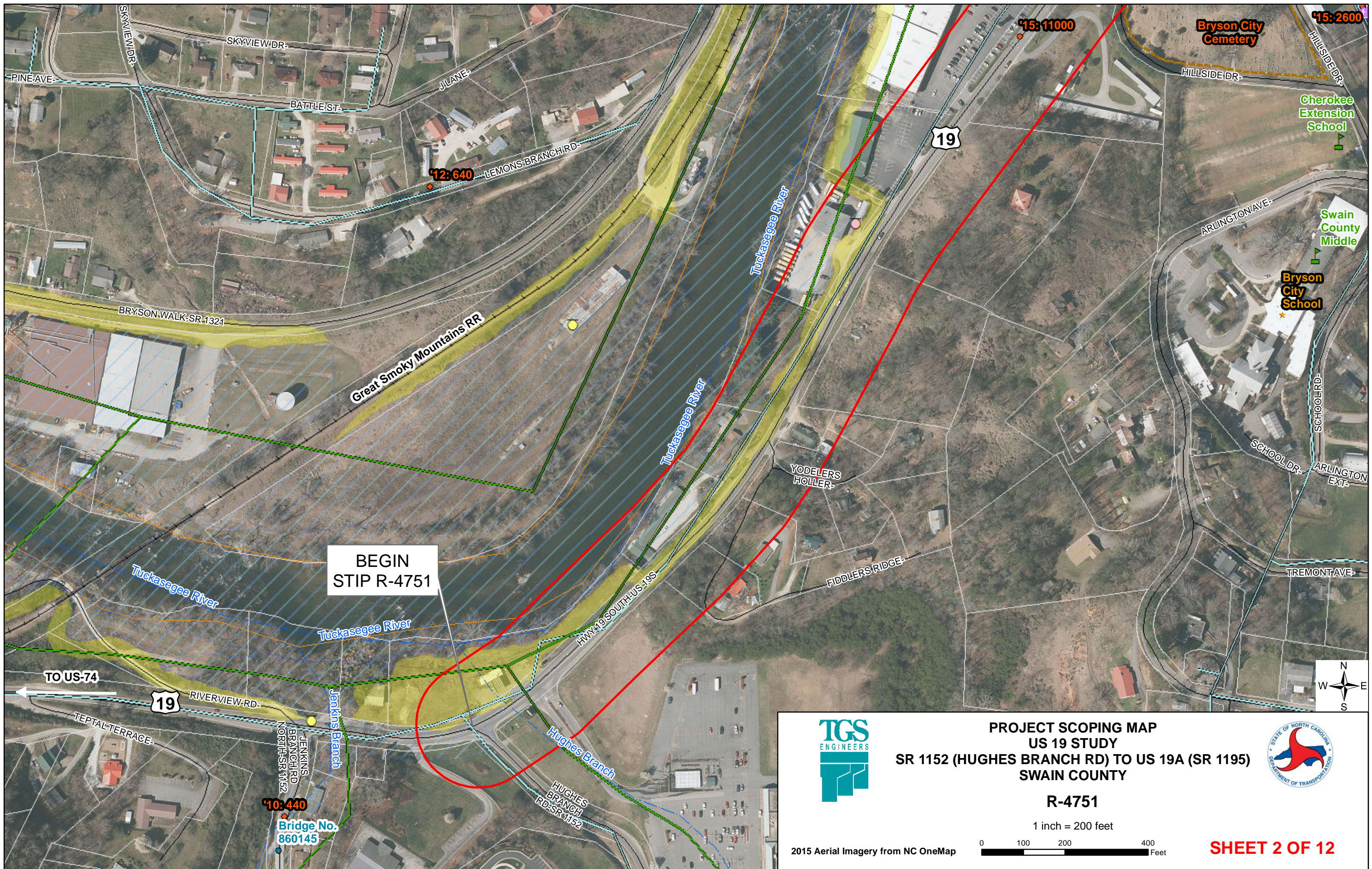
500-year Flood Zone

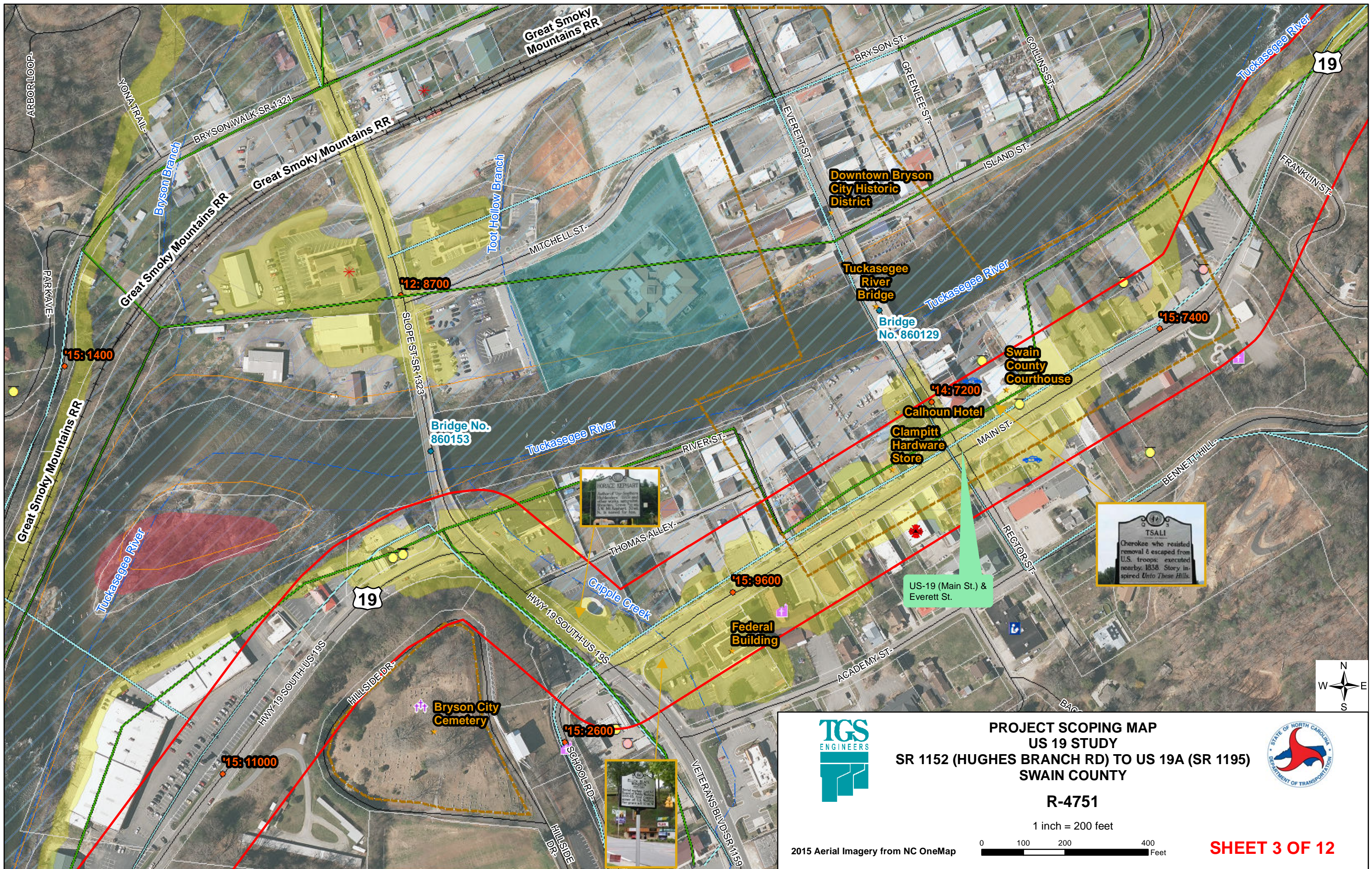
PROJECT SCOPING MAP
US 19 STUDY
SR 1152 (HUGHES BRANCH RD) TO US 19A (SR 1195)
SWAIN COUNTY
R-4751


2015 Aerial Imagery from NC OneMap

1 inch = 1,500 feet

SHEET 1 OF 12








PROJECT SCOPING MAP
US 19 STUDY
SR 1152 (HUGHES BRANCH RD) TO US 19A (SR 1195)
SWAIN COUNTY

R-4751

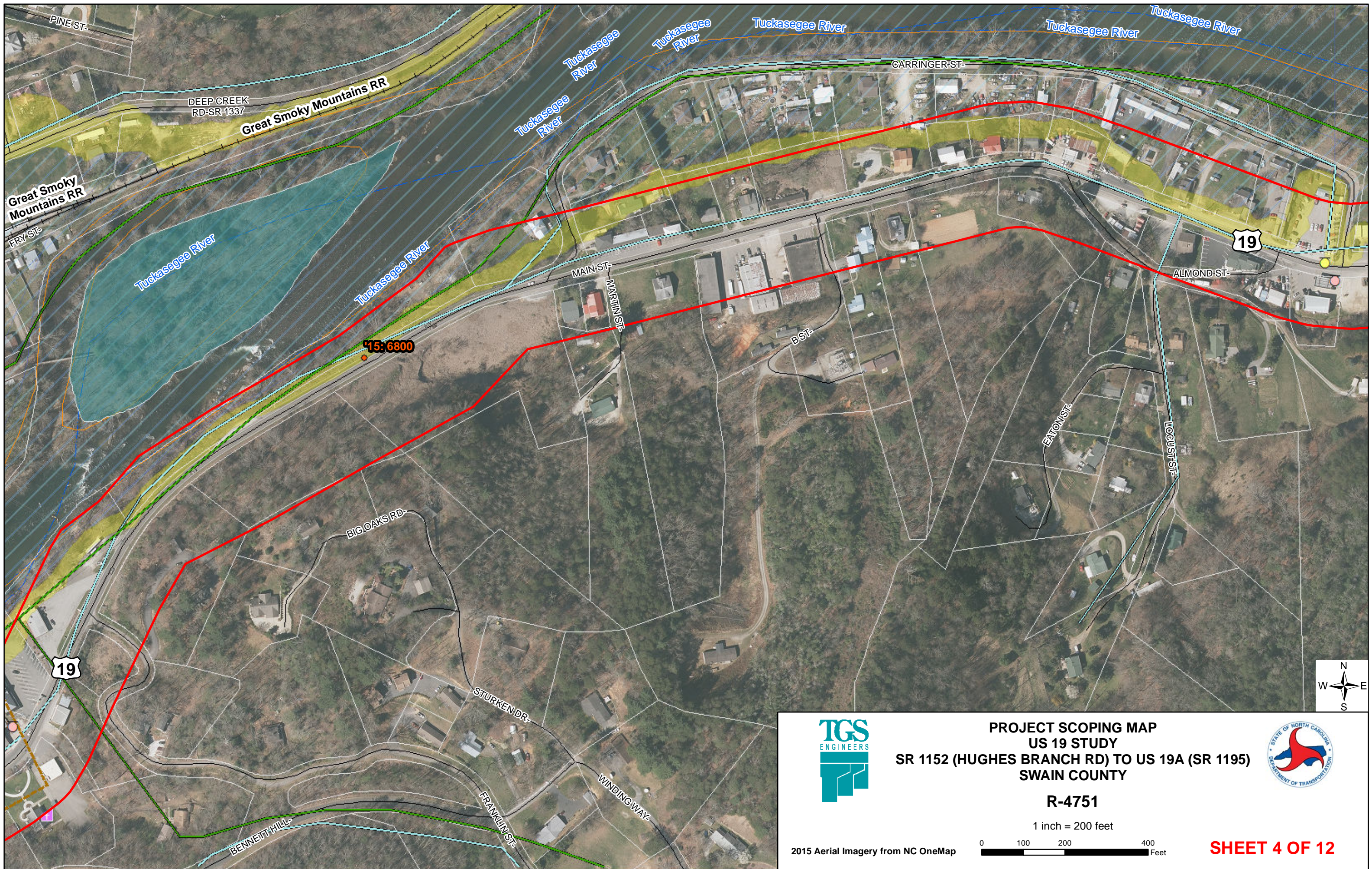
1 inch = 200 feet

0 100 200 400 Feet



SHEET 3 OF 12

2015 Aerial Imagery from NC OneMap



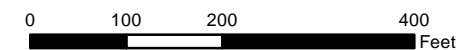
PROJECT SCOPING MAP
US 19 STUDY
SR 1152 (HUGHES BRANCH RD) TO US 19A (SR 1195)
SWAIN COUNTY



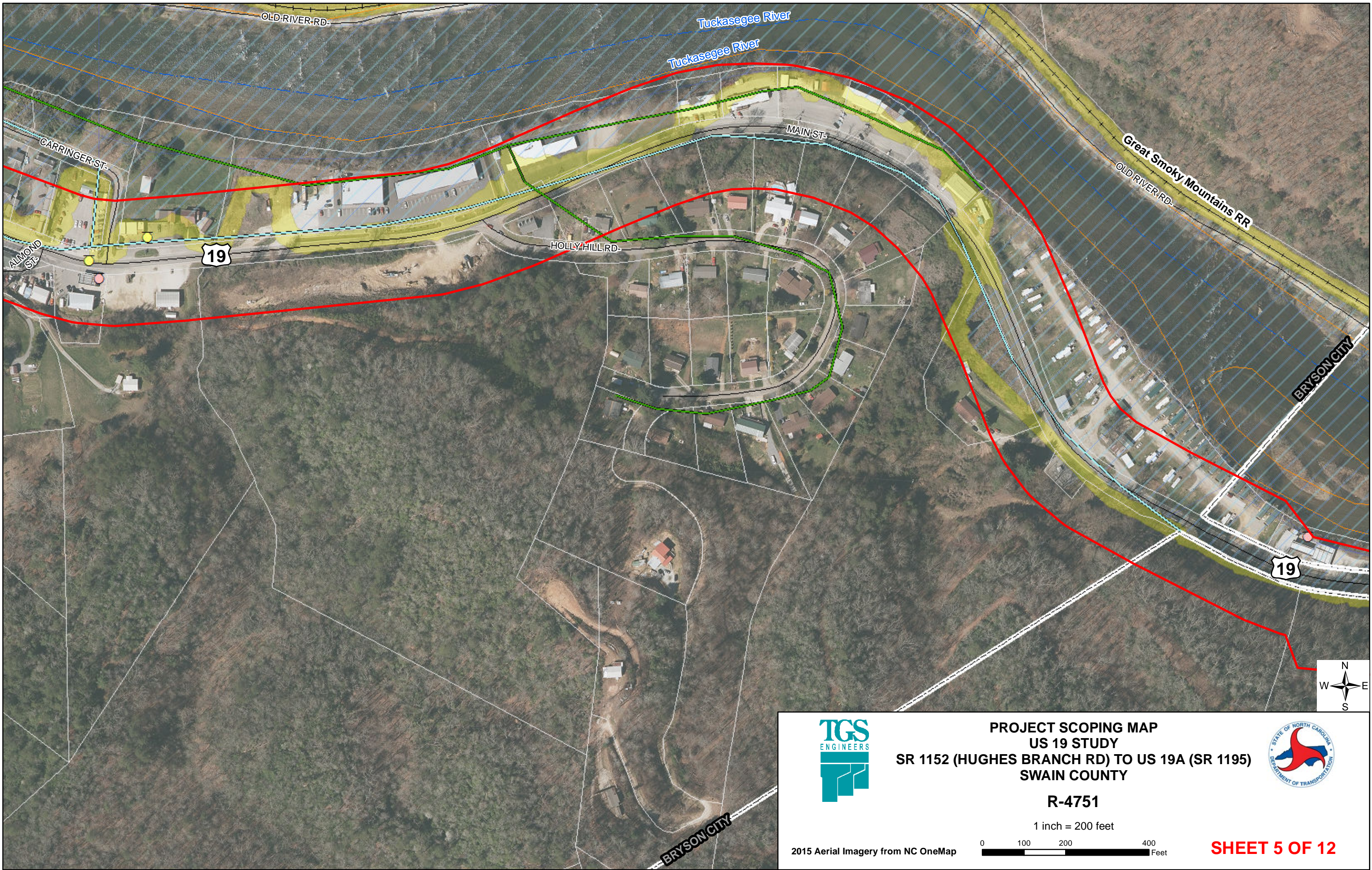
R-4751

1 inch = 200 feet

2015 Aerial Imagery from NC OneMap



SHEET 4 OF 12



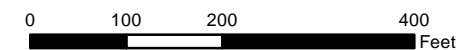
PROJECT SCOPING MAP
US 19 STUDY
SR 1152 (HUGHES BRANCH RD) TO US 19A (SR 1195)
SWAIN COUNTY



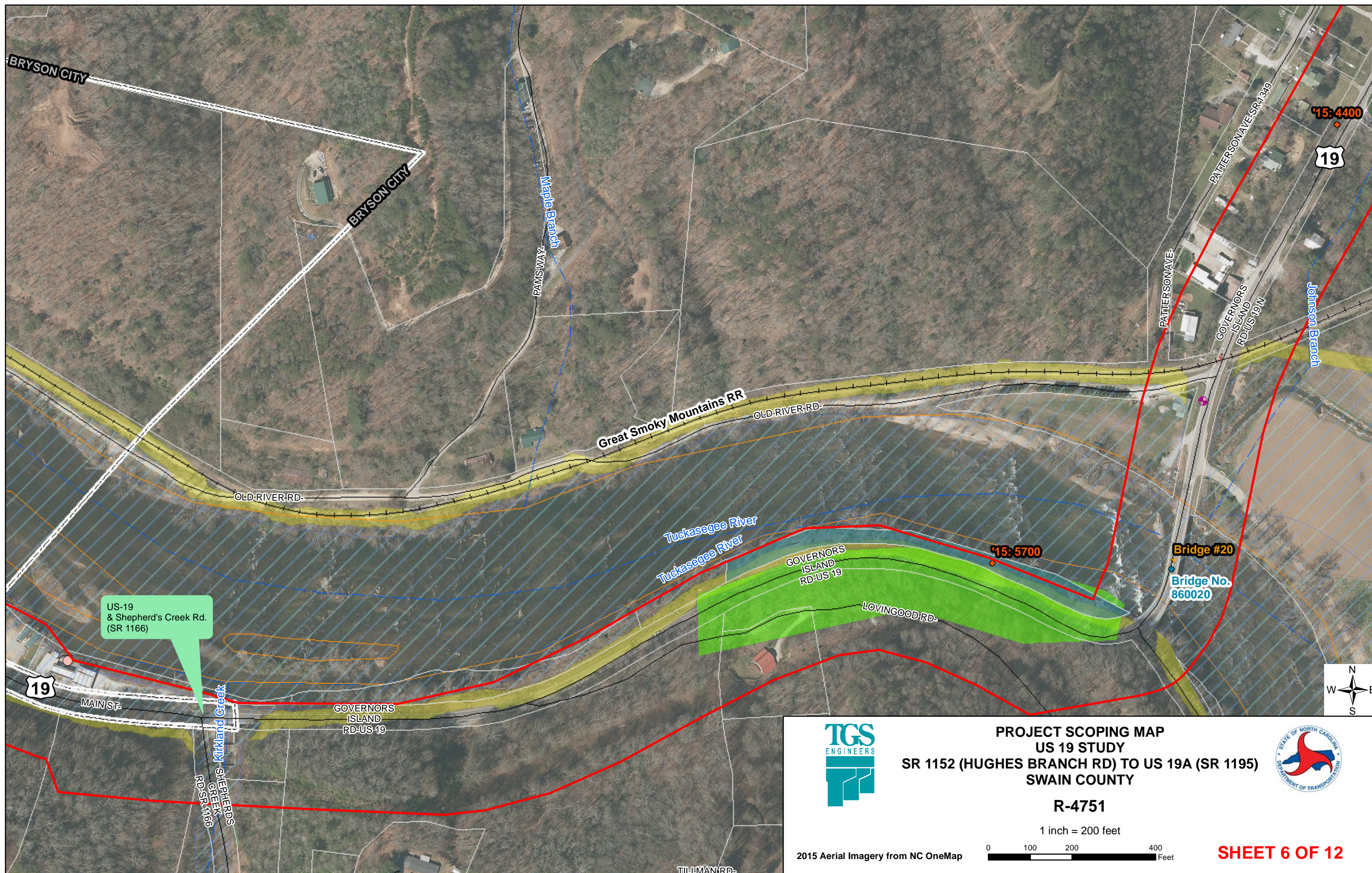
R-4751

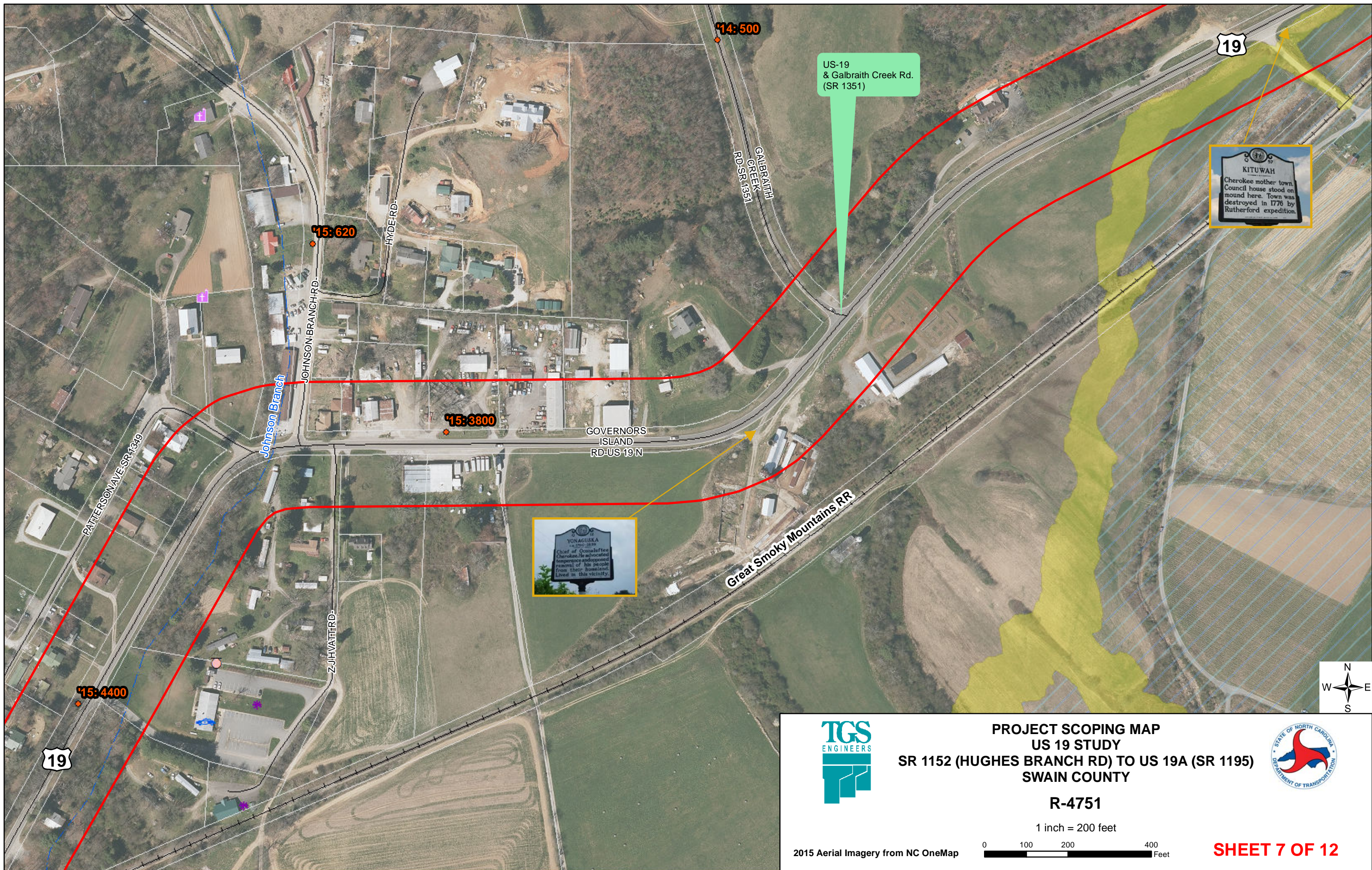
1 inch = 200 feet

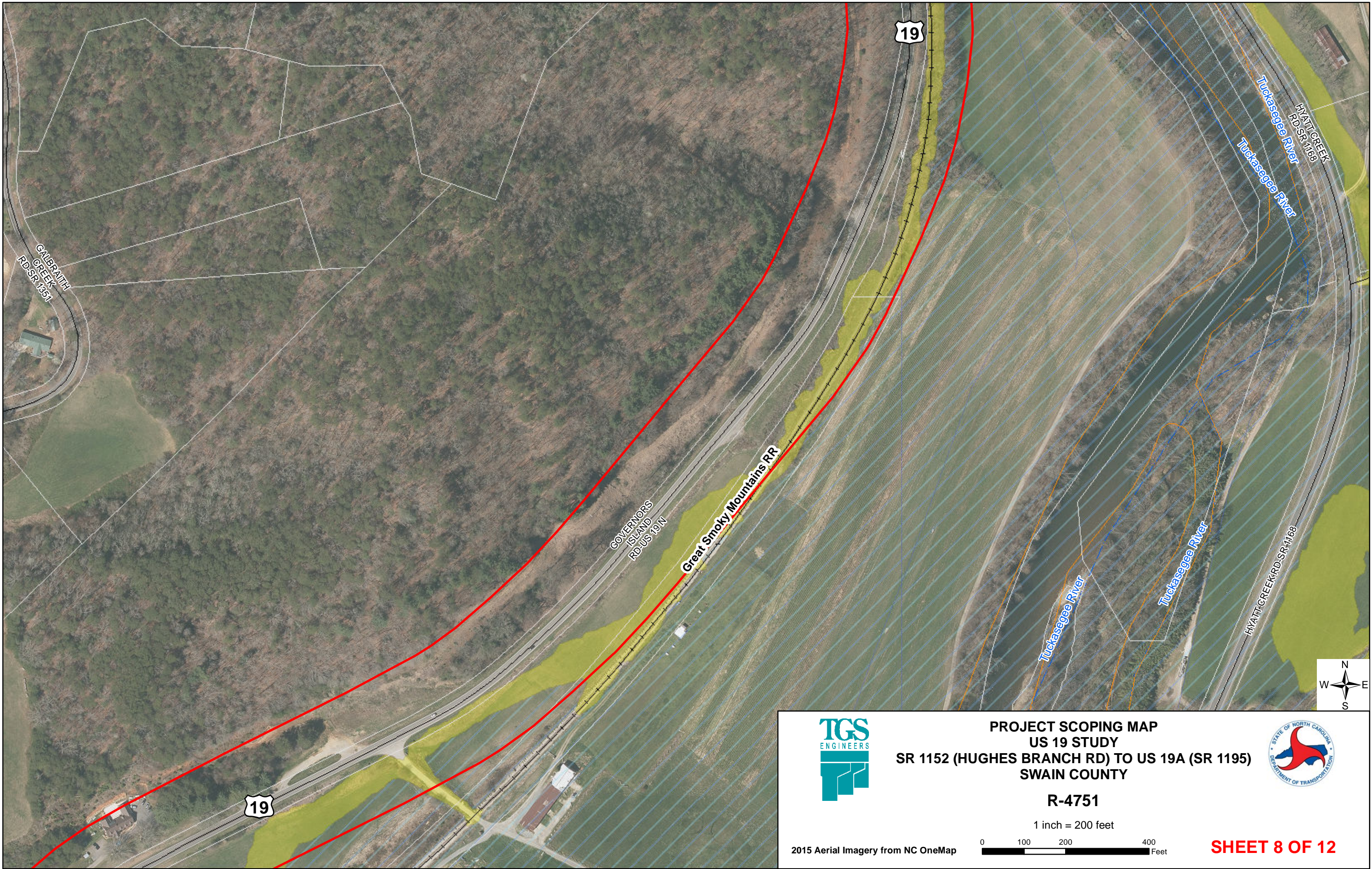
2015 Aerial Imagery from NC OneMap

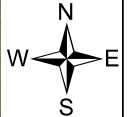
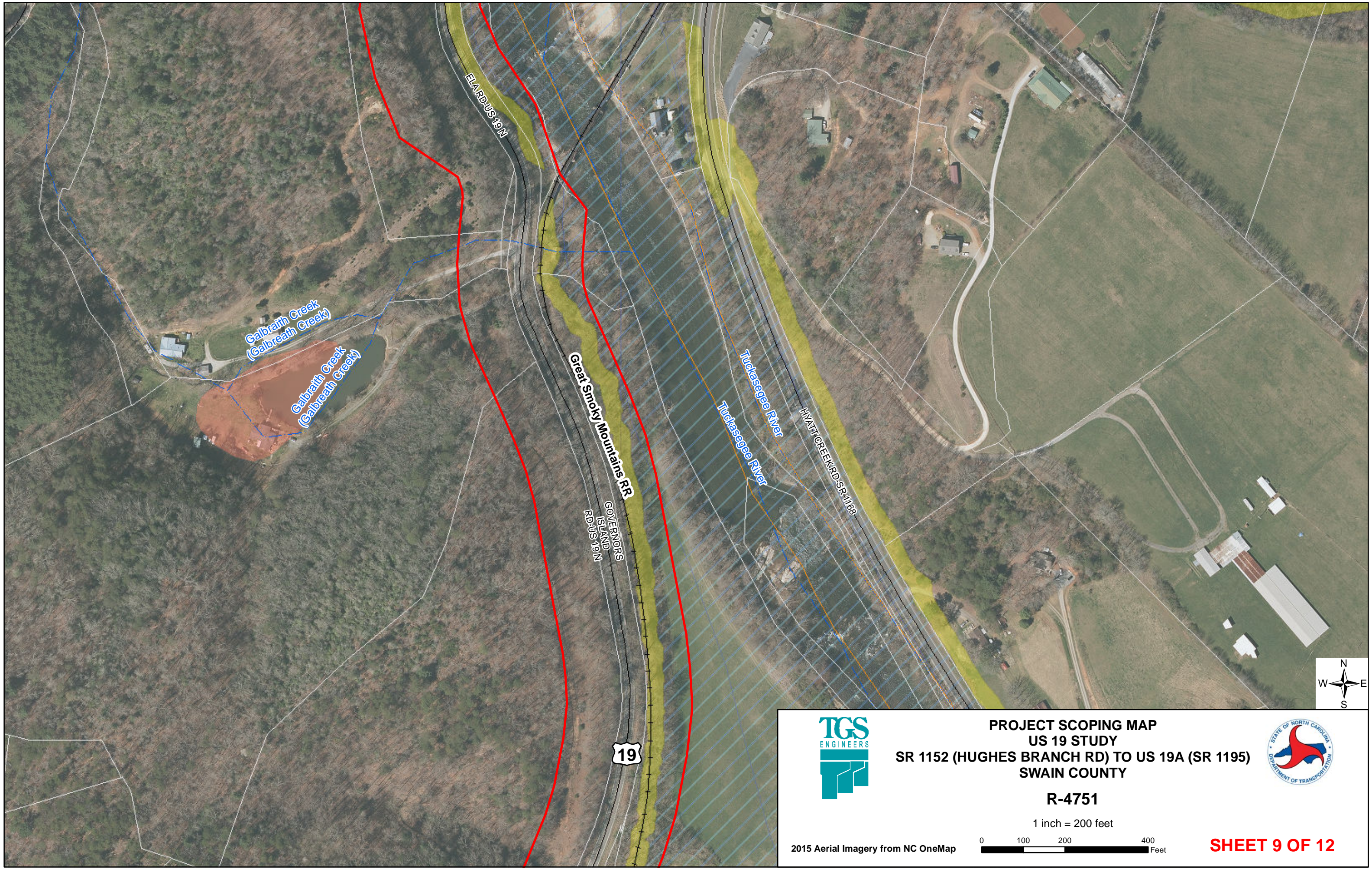


SHEET 5 OF 12









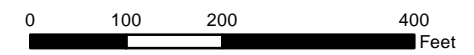
PROJECT SCOPING MAP
US 19 STUDY
SR 1152 (HUGHES BRANCH RD) TO US 19A (SR 1195)
SWAIN COUNTY

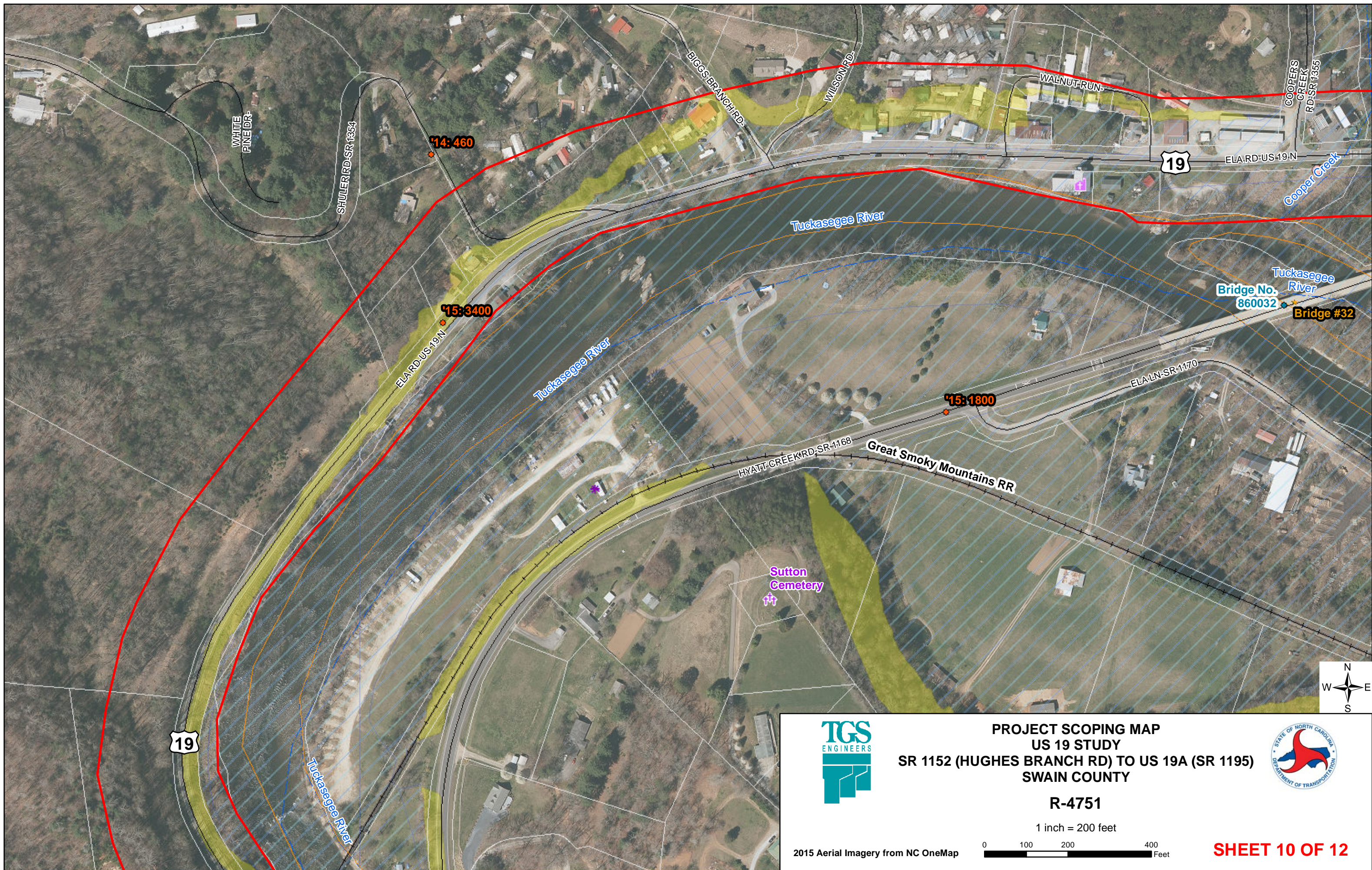


R-4751

1 inch = 200 feet

2015 Aerial Imagery from NC OneMap





PROJECT SCOPING MAP
US 19 STUDY
SR 1152 (HUGHES BRANCH RD) TO US 19A (SR 1195)
SWAIN COUNTY

R-4751

1 inch = 200 feet

2015 Aerial Imagery from NC OneMap

0 100 200 400 Feet

SHEET 10 OF 12

