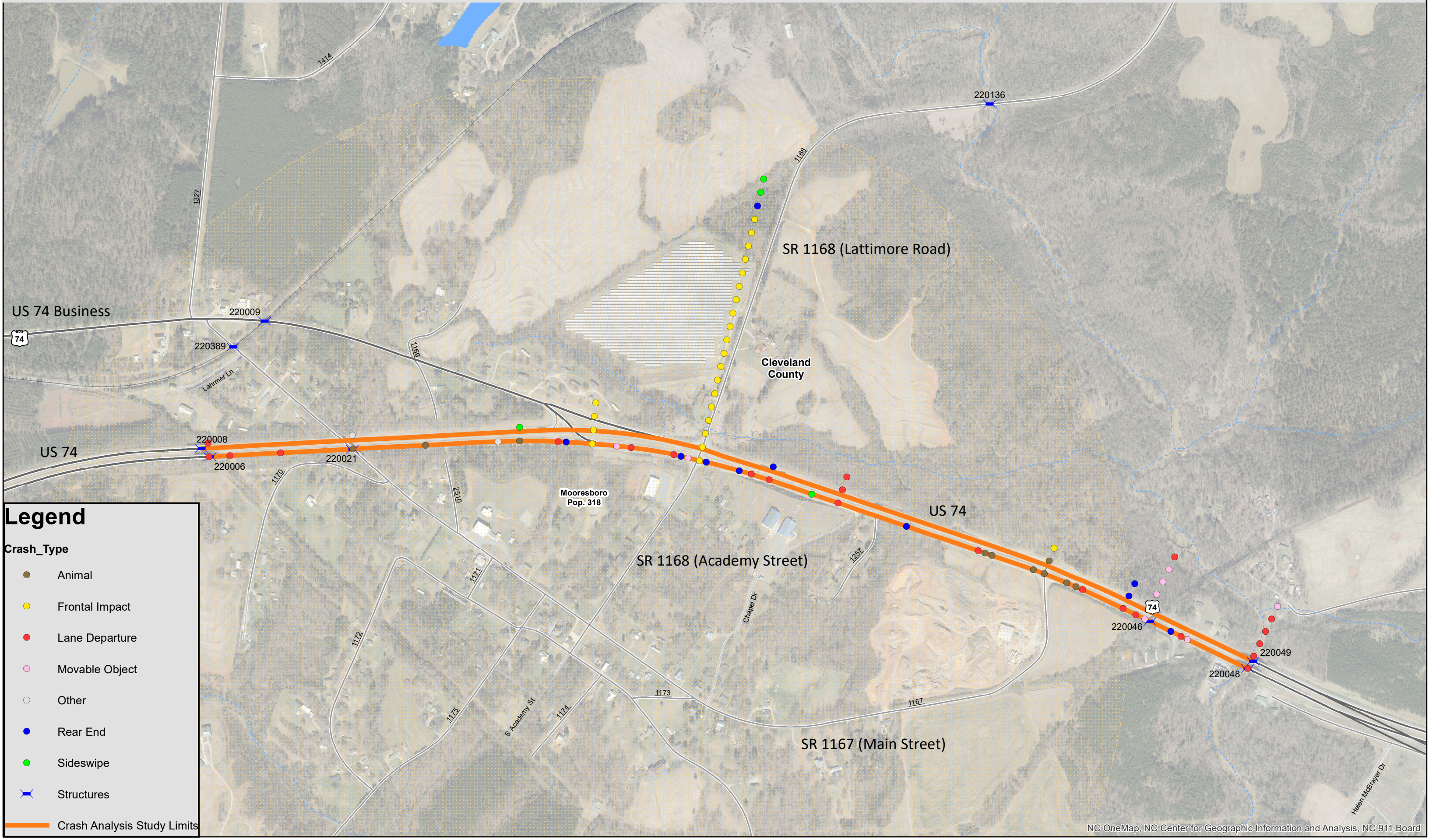


R-4045: US 74 from Structures 6 and 8 over abandoned Railroad to Structures 48 and 49 over Sandy Run Creek (4/1/2015 - 3/31/2020)



Legend

Crash_Type

- Animal
- Frontal Impact
- Lane Departure
- Movable Object
- Other
- Rear End
- Sideswipe
- Structures
- Crash Analysis Study Limits