



NORTH CAROLINA
Department of Transportation



External Scoping Meeting STIP Project R-2632AB

September 20, 2018

AGENDA

- Introductions
- Meeting Purpose and Goals
- Project Location and Description
- Project Review
- Purpose and Need
- Next Steps / Schedule
- Typical Section
- Project Scoping
 - Input from NCDOT Business Units, Agencies, MPO and Local Officials
- Summary/Adjourn

INTRODUCTIONS

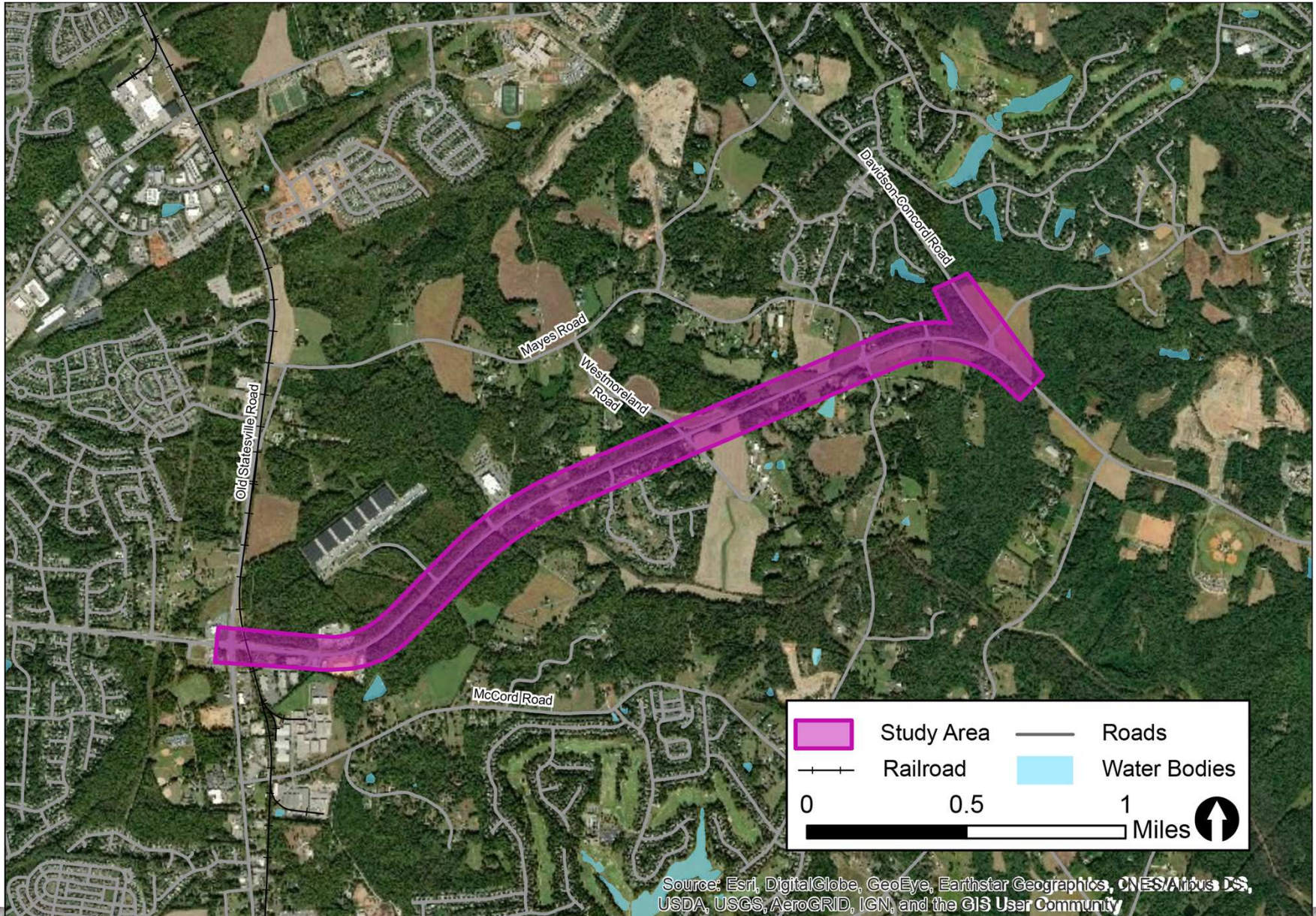
- In Person Attendees
- Attendees on Phone

MEETING PURPOSE AND GOALS

- Transfer Information about project to Agencies and External Partners
- Understand and Review Project Background and Knowledge
- Continue coordination efforts with Resource Agencies and External Partners
- Discuss Purpose and Need of Project

PROJECT LOCATION AND DESCRIPTION

PROJECT LOCATION



Source: Esri, DigitalGlobe, GeoEye, Earthstar Geographics, CNES/Airbus DS, USDA, USGS, AeroGRID, IGN, and the GIS User Community

PROJECT DESCRIPTION

- STIP Project R-2632AB

- Project Length: 2.67 miles
- Proposes widening of NC 73 from Old Statesville Road (NC 115) to Davidson-Concord Road (SR 2693) to a multi-lane, divided facility.
- Currently two-lane undivided with left turn lanes at most intersections.
- Ties into four-lane section east of NC 115, constructed as part of R-2632AA and R-2632AC (completed 2012).



PROJECT DESCRIPTION

- Proposed design speed = 50MPH
- No signalized intersections between NC 115 and Davidson-Concord Road.
- Norfolk-Southern crossing just east of NC 115 will not be impacted by R-2632AB.
- **Project is federally funded.**



NC 73 facing west toward
four-lane section

PROJECT REVIEW

R-2632AB

PROJECT SCHEDULE

- Environmental Document (CE): Summer 2019
- Right of Way: FY 2020
- Construction: FY 2022

WHERE HAVE WE BEEN?

- NC 73 Corridor Projects Coordination Meeting hosted by the Town of Huntersville: 9/23/2015
- NC 73 Corridor Projects Public Involvement Coordination Meeting: 11/20/2015
- Scope of Services Meeting: 7/11/2016
- Internal Scoping Meeting: 08/08/2017
- Merger Screening Meeting: 11/15/2017
- NC 73 Council of Planning Meetings and Local Officials Meetings: 09/2017 – 03/2018

PRIOR HISTORY

- Categorical Exclusion completed in 1993 for R-2632, widening of NC 73 from US 21 to Davidson-Concord Road.
- R-2632 re-evaluated and a new Categorical Exclusion completed in 2009
 - R-2632AA was funded (from US 21 to NC 115)
 - R-2632AB was unfunded
- R-2632AA construction completed in 2012, including improvements to NC 115/NC 73 intersection
- R-2632AC completed the NC 115/NC 73 intersection

ACTIVITIES TO DATE

Landowner Notification Letters	September 2016
NRTR Fieldwork	October 2016 - January 2017
Final NRTR approved	August 2017
Draft PJD Request submitted to ECAP	August 2017
GeoEnvironmental Planning Report completed by NCDOT	August 2017
Traffic Forecast completed	September 2017
Archaeology – No Survey Required	September 2017
Historic Architecture – No Survey Required	September 2017
Preliminary Hydraulics Report approved	November 2017
Merger Decision (Not in Merger)	May 2018
Draft Air Quality Report Submitted	September 2018

ON-GOING AND FUTURE ACTIVITIES

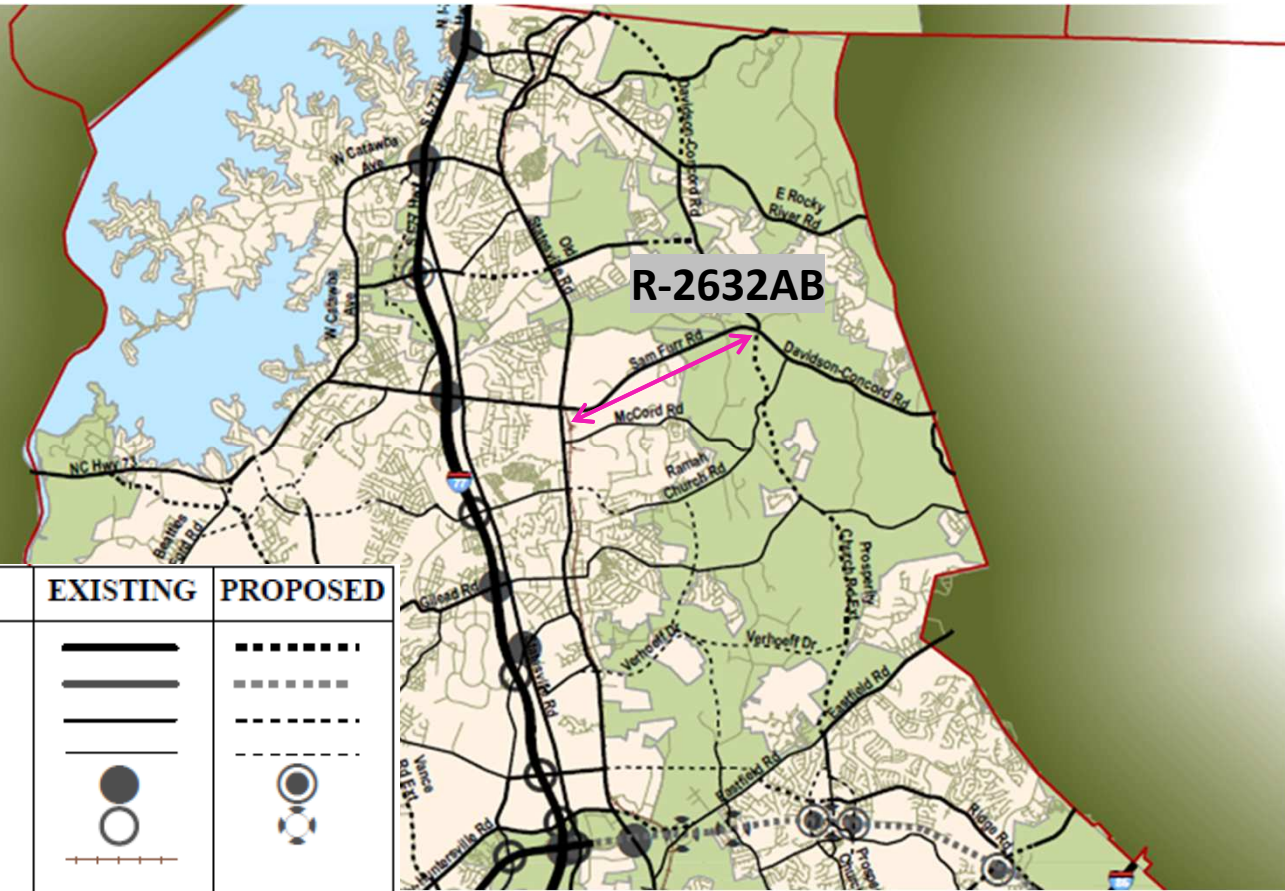
- Traffic Analysis in progress
- Community Studies in progress
- Noise Analysis in progress
- Roadway Design in progress
- Public Meeting (Fall 2018)
- NEPA CE (Summer 2019)

MPO PLANS

- Project currently in the CRTPO Metropolitan Transportation Plan (MTP)
- Project included in CRTPO Comprehensive Transportation Plan (CTP)

CRTPO Thoroughfare Plan

LINCOLN

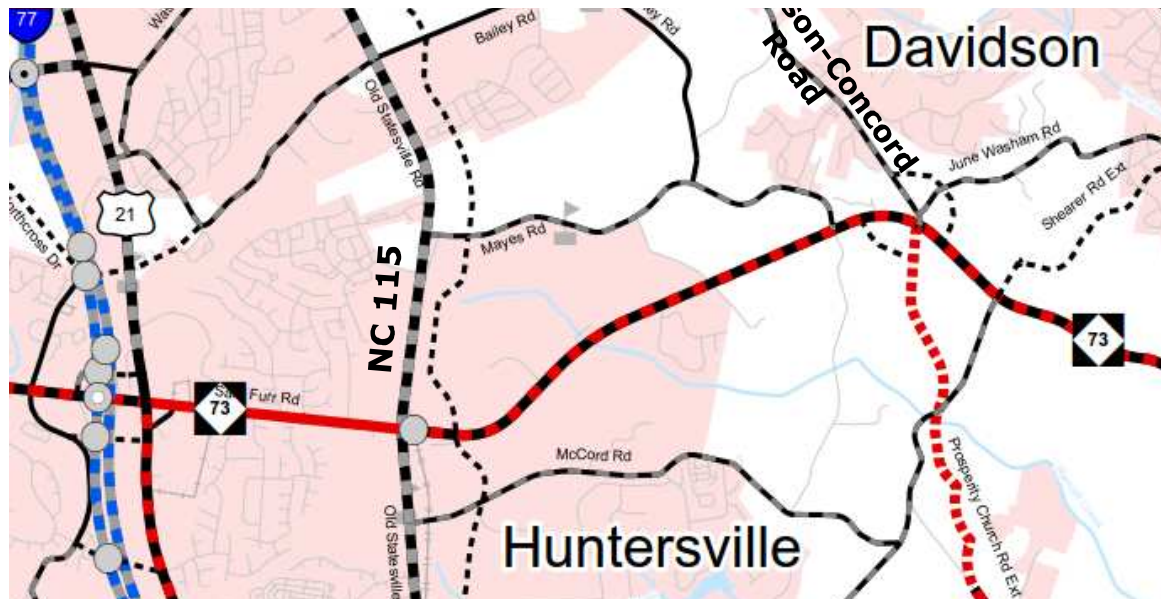


CLASSIFICATION	EXISTING	PROPOSED
FREEWAY-EXPRESSWAY		
CLASS II		
MAJOR THOROUGHFARE		
MINOR THOROUGHFARE		
INTERCHANGE		
GRADE SEPARATION		
RAILROAD		

Existing Major Thoroughfare

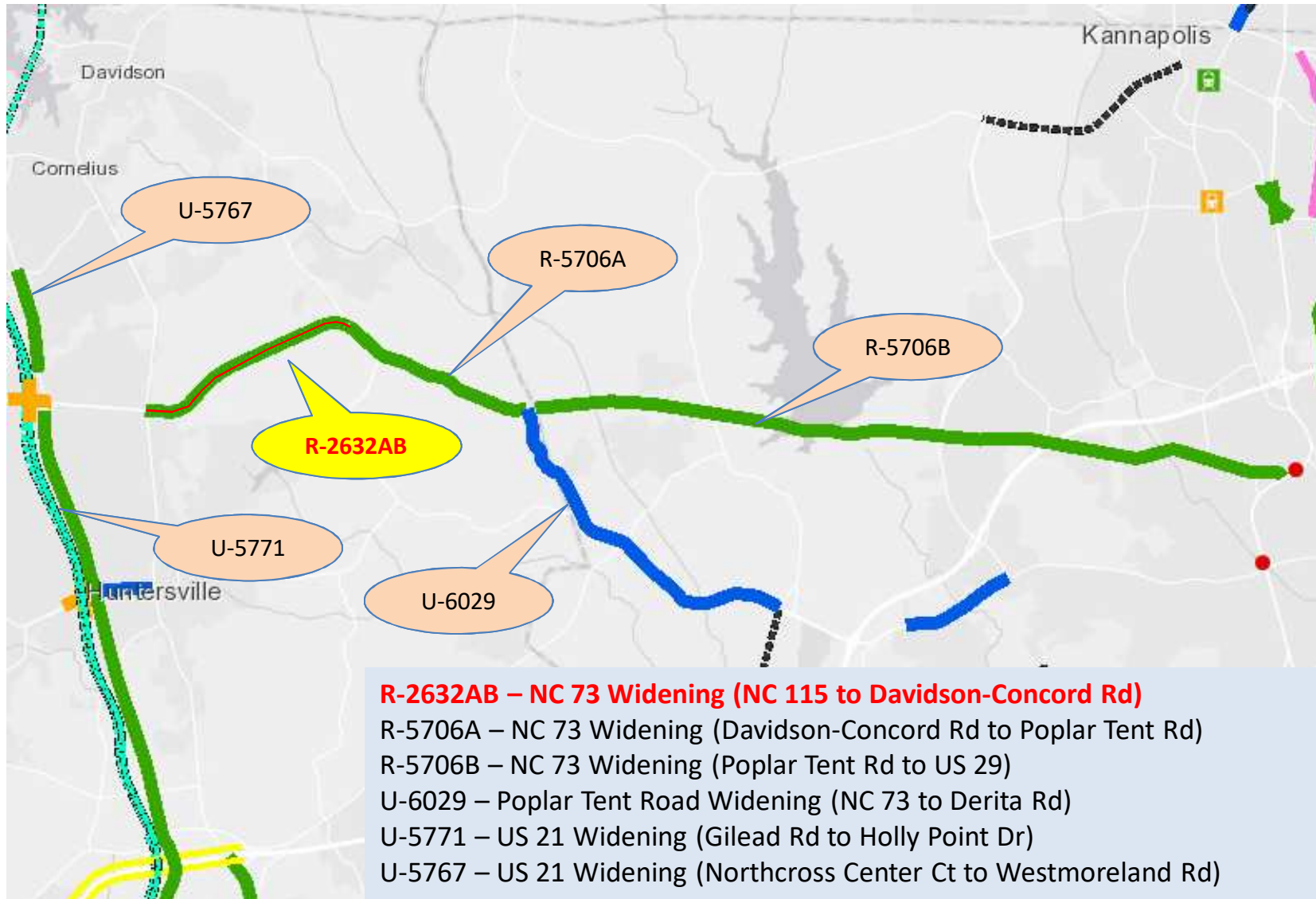
CRTPO CTP – Adopted March 2017

BOULEVARD NEEDS IMPROVEMENT



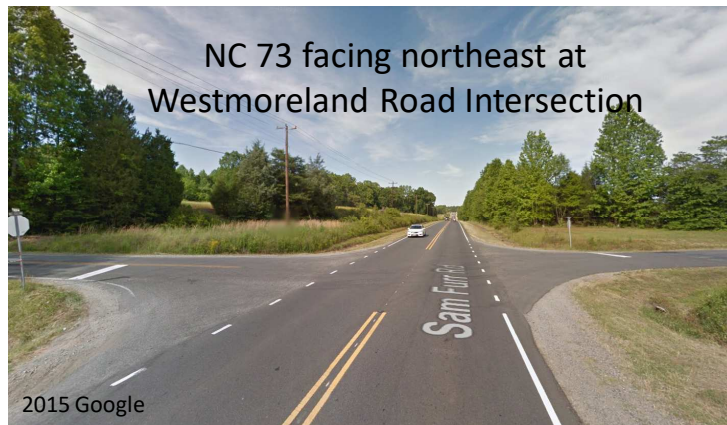
<p>Freeways</p> <ul style="list-style-type: none"> Existing Needs Improvement Recommended <p>Expressways</p> <ul style="list-style-type: none"> Existing Needs Improvement Recommended <p>Boulevards</p> <ul style="list-style-type: none"> Existing Needs Improvement Recommended <p>Other Major Thoroughfares</p> <ul style="list-style-type: none"> Existing Needs Improvement Recommended 	<p>Minor Thoroughfares</p> <ul style="list-style-type: none"> Existing Needs Improvement Recommended <p>Interchanges</p> <ul style="list-style-type: none"> Existing Needs Improvement Recommended <p>Interchanges with Managed Lanes Access</p> <ul style="list-style-type: none"> Existing Needs Improvement Recommended 	<p>Grade Separations</p> <ul style="list-style-type: none"> Existing Needs Improvement Recommended 	<p>0 0.5 1 2 Miles</p> <p>Sheet 2F of 5</p> <p>Base map date: January 4, 2017</p> <p>Refer to CTP document for more details</p>	<p>Highway Map Inset F</p> <p>Charlotte Regional Transportation Planning Organization</p> <p>Charlotte Regional Transportation Planning Organization</p> <p>North Carolina</p> <p>Comprehensive Transportation Plan</p> <p>Plan date: January 18, 2017</p>
---	--	--	---	---

NEARBY STIP PROJECTS

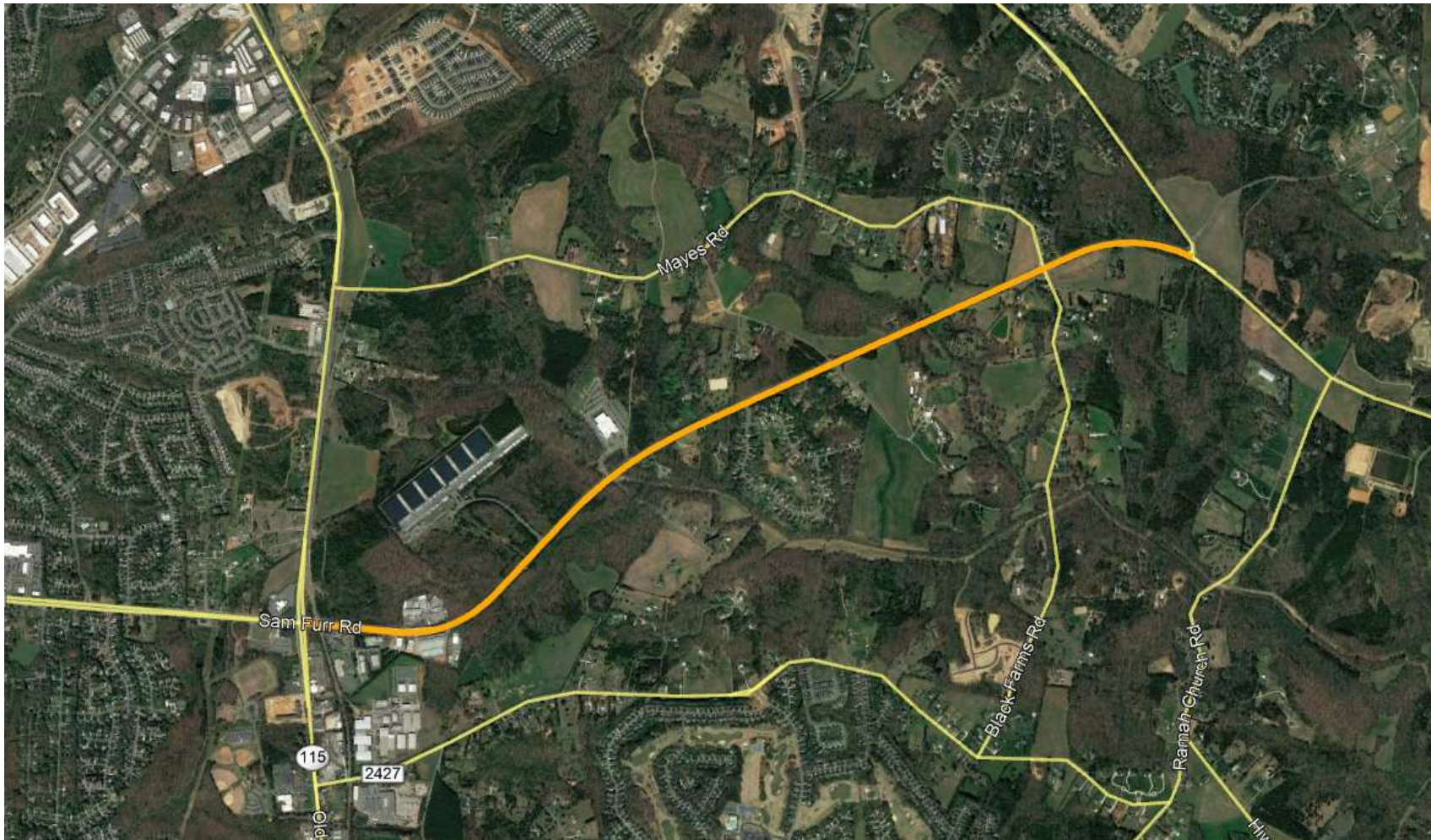


EXISTING CONDITIONS

- 2-lane undivided with no access control
- Posted Speed: 55 MPH
- ROW: 100 feet from west project limits to Mayes Road. 85 feet from Mayes Road to east project limits
- One Major Structure: Ramah Creek Culvert
- One railroad crossing 200 feet east of NC 115
- No bicycle or pedestrian facilities



LAND USE



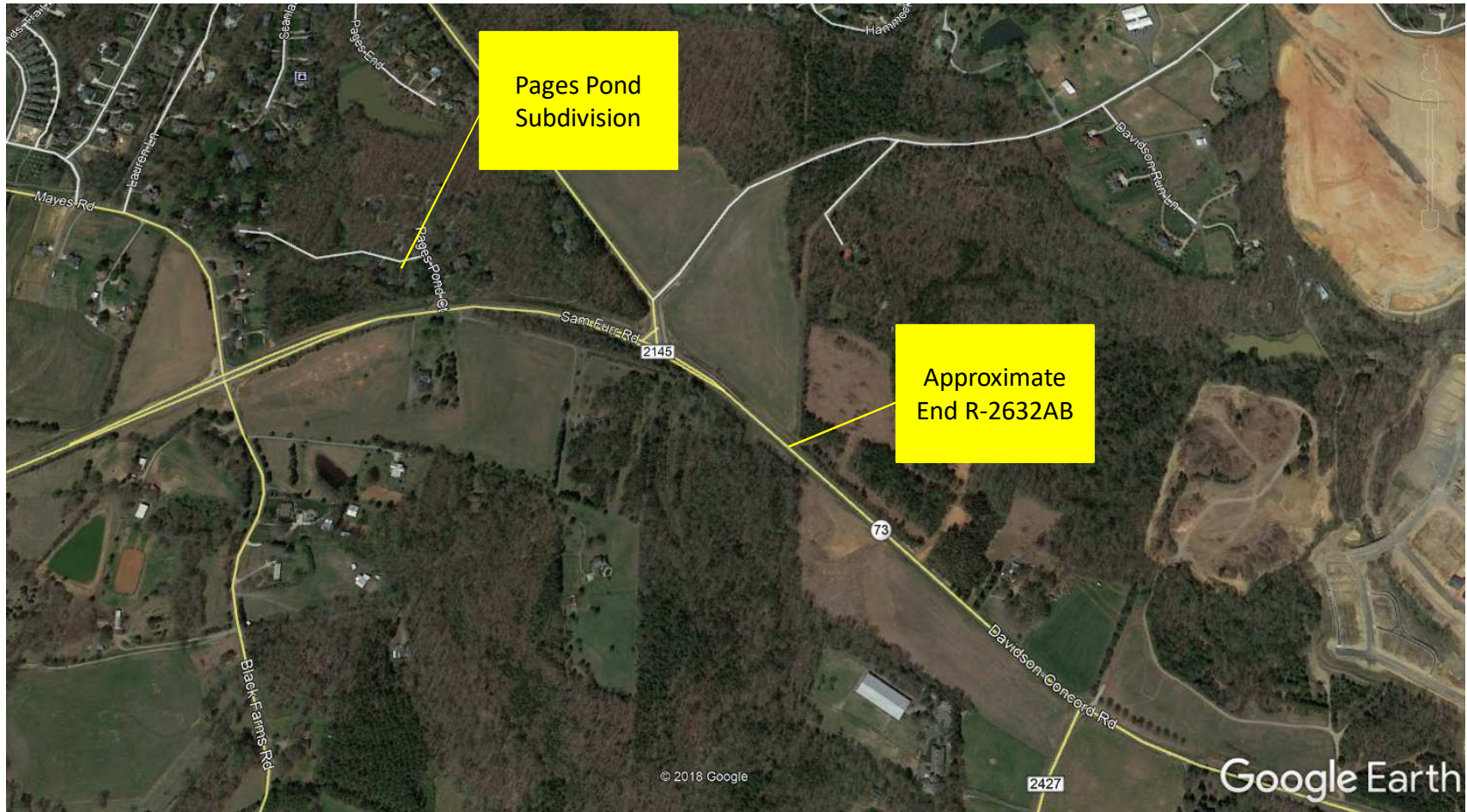
From NC 115 to New Birth Drive



From New Birth Drive to Mayes Road/Black Farms Road – Agriculture and residential



From Mayes Road/Black Farms Road to Davidson-Concord Road – Agriculture and residential



HUMAN ENVIRONMENT

- Presence of Spanish-speaking population potentially requiring Language Assistance
- Two privately owned recreation facilities: Everest Gymnastics Training Center and Lake Pointe Equestrian Center
- One church
- No historic or archaeological resources

Lake Pointe
Equestrian Center



Everest Gymnastics
Training Center



University City
Church






HUMAN ENVIRONMENT

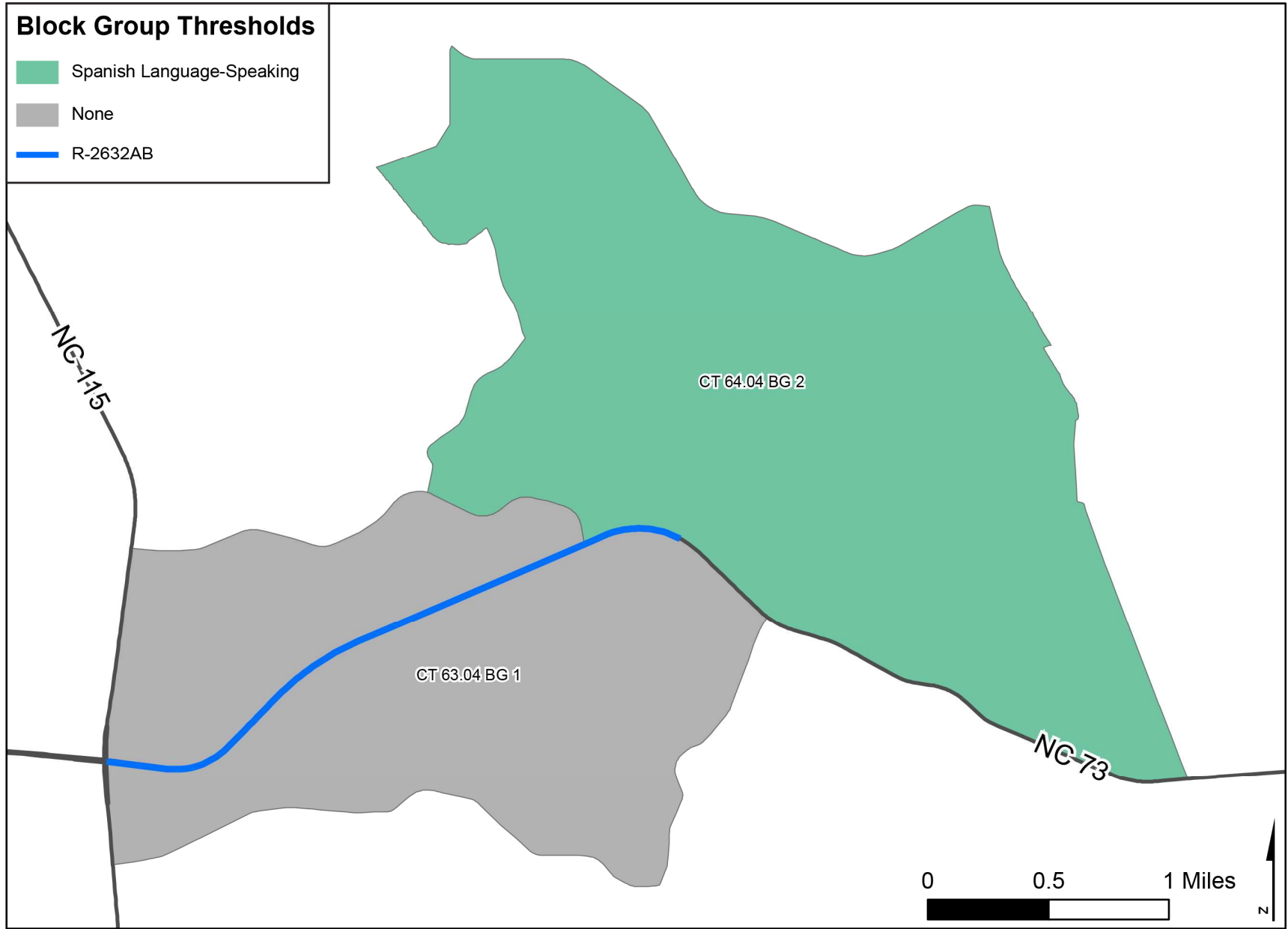
- No pedestrian and bicycle facilities.
- Land use mostly undeveloped/agricultural. Some commercial and a church on western end. One subdivision (Willowbrook) in the central area on the south side. Some residential on the east end, including Pages Pond subdivision.
- Proposed 141-unit subdivision, Northbrook, planned in western end of corridor – scheduled to be approved in September 2018.

ENVIRONMENTAL JUSTICE & LANGUAGE ASSISTANCE

- No presence of minority or low income populations meeting the criteria for Environmental Justice.
- Data indicates Limited English Proficiency (LEP) populations meeting the US Department of Justice LEP Safe Harbor threshold for Spanish language.
- Data indicates a Spanish language-speaking population exceeding 50 persons that may require Language Assistance (LA).

Block Group Thresholds

-  Spanish Language-Speaking
-  None
-  R-2632AB



NATURAL ENVIRONMENT

- Fieldwork conducted October 2016 – January 2017
- Final NRTR approved August 2017
- PJD Package submitted to NCDOT August 2017
- 10 jurisdictional streams were delineated in the study area
- 7 wetlands were delineated within the study area (0.3 acres)
- No High Quality Waters and Water Supply Watershed in the study area
- No streams included in the Final 2016 303(d) lists of impaired waters.

NATURAL ENVIRONMENT

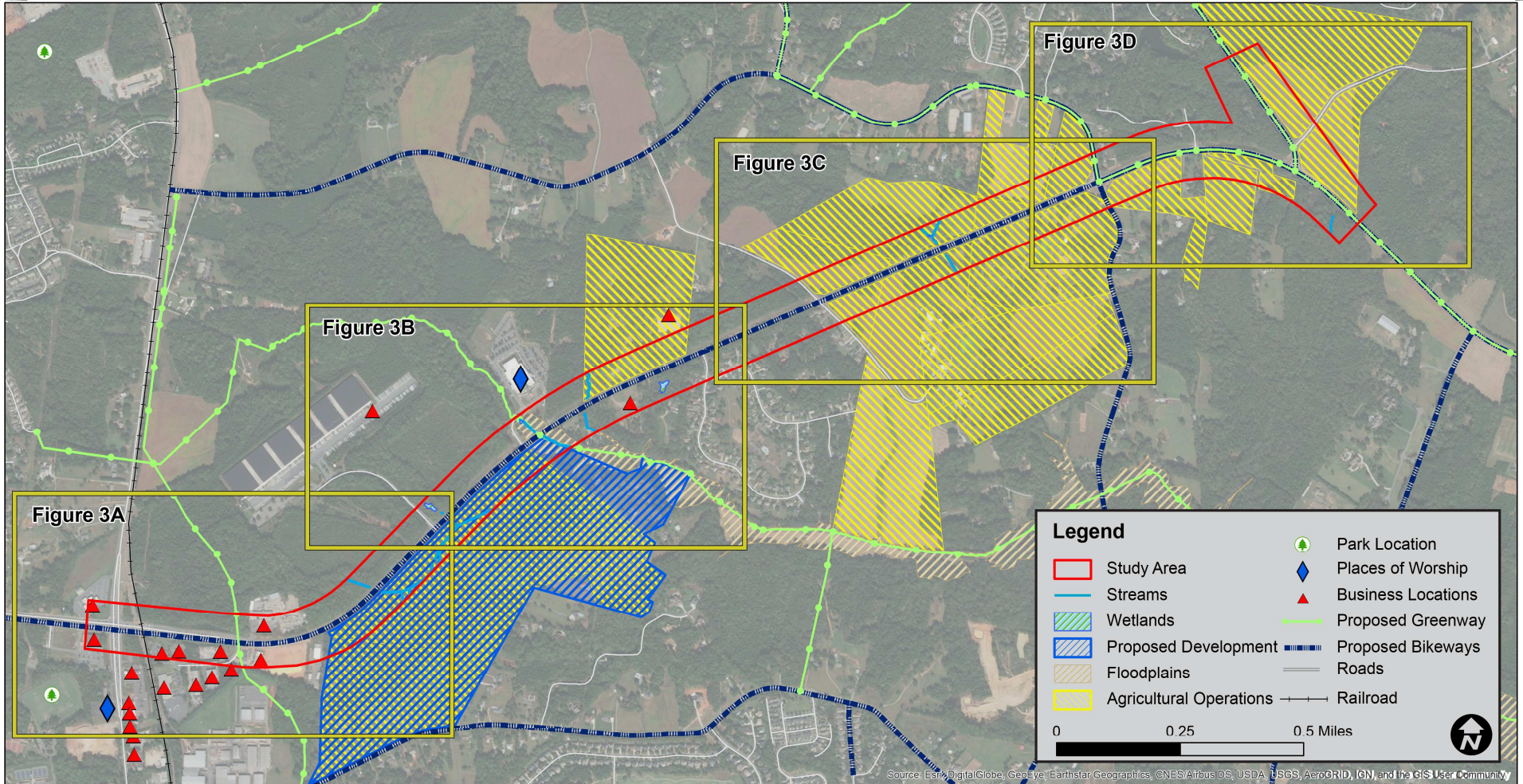
Protected Species

- Plant surveys conducted as part of NRTR fieldwork
- Mussel Survey conducted by NCDOT January 2018

Biological Conclusions

- Schweinitz's sunflower: No Effect
- Smooth coneflower: No Effect
- Michaux's sumac: No Effect
- Rusty-patched bumble bee: No Effect
- Carolina heelsplitter: No Effect
- Northern long-eared bat: Consistent with 4(d) Rule

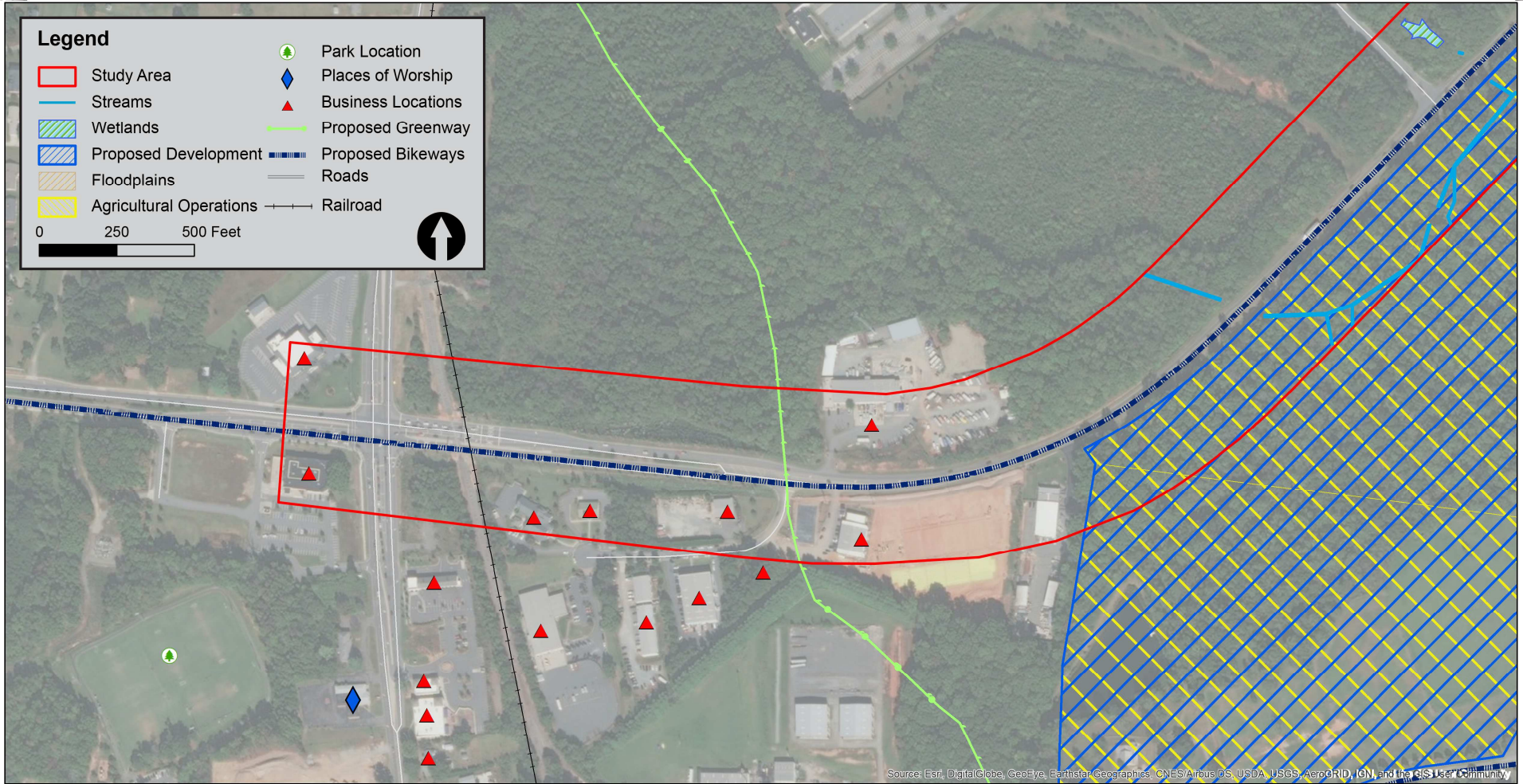
ENVIRONMENTAL FEATURES



Environmental Features Map
NC 73 Widening from NC 115 (Old Statesville Road) to SR 2692 (Davidson-Concord Road)
TIP No: R-2632AB
WBS #: 38824.1.2
Mecklenburg County
August 2018

Figure 3

ENVIRONMENTAL FEATURES



Environmental Features Map

NC 73 Widening from NC 115 (Old Statesville Road) to SR 2692 (Davidson-Concord Road)

TIP No: R-2632AB

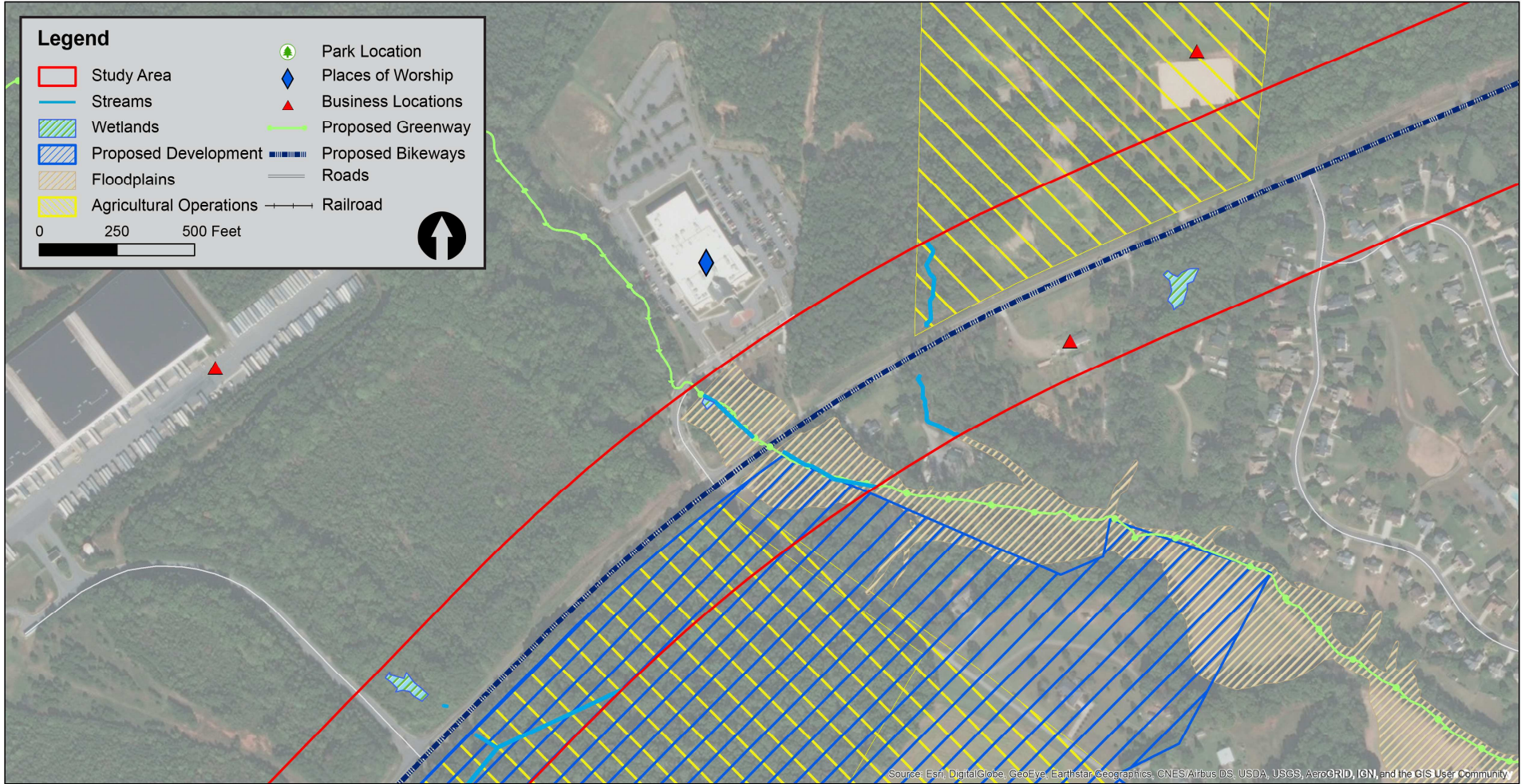
WBS #: 38824.1.2

Mecklenburg County

August 2018

Figure 3A

ENVIRONMENTAL FEATURES



Environmental Features Map

NC 73 Widening from NC 115 (Old Statesville Road) to SR 2692 (Davidson-Concord Road)

TIP No: R-2632AB

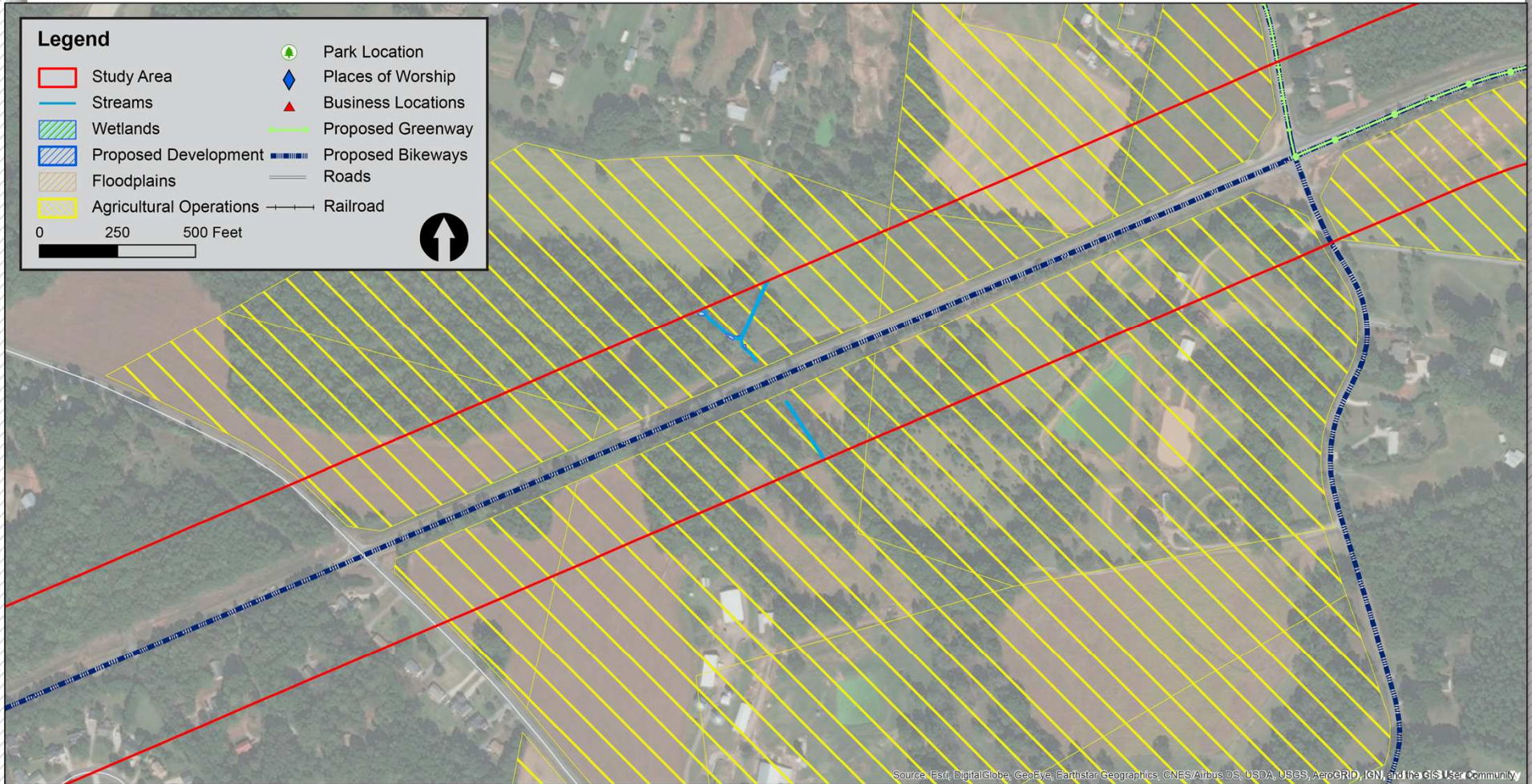
WBS #: 38824.1.2

Mecklenburg County

August 2018

Figure 3B

ENVIRONMENTAL FEATURES



Environmental Features Map

NC 73 Widening from NC 115 (Old Statesville Road) to SR 2692 (Davidson-Concord Road)

TIP No: R-2632AB

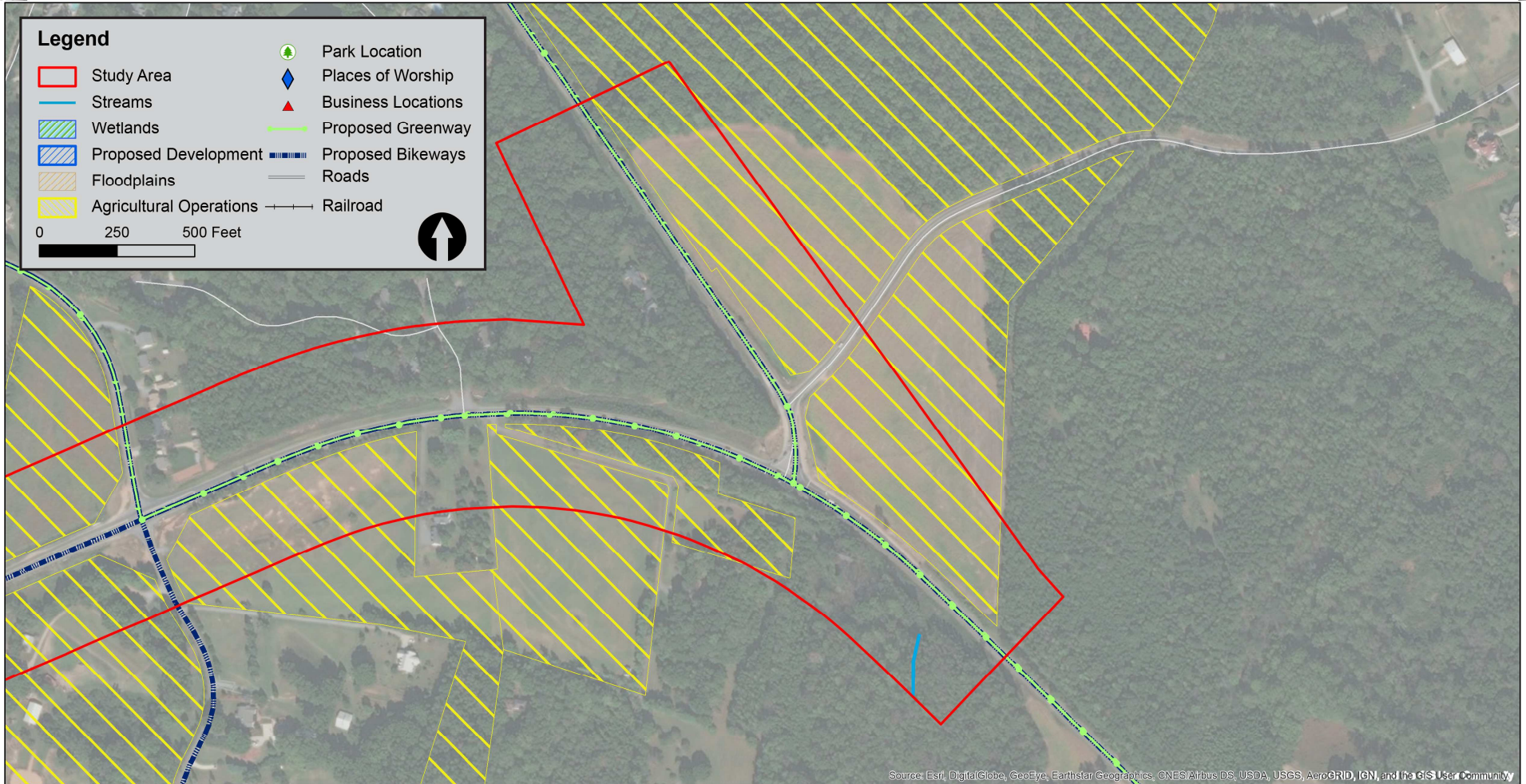
WBS #: 38824.1.2

Mecklenburg County

August 2018

Figure 3C

ENVIRONMENTAL FEATURES



Environmental Features Map

NC 73 Widening from NC 115 (Old Statesville Road) to SR 2692 (Davidson-Concord Road)

TIP No: R-2632AB

WBS #: 38824.1.2

Mecklenburg County

August 2018

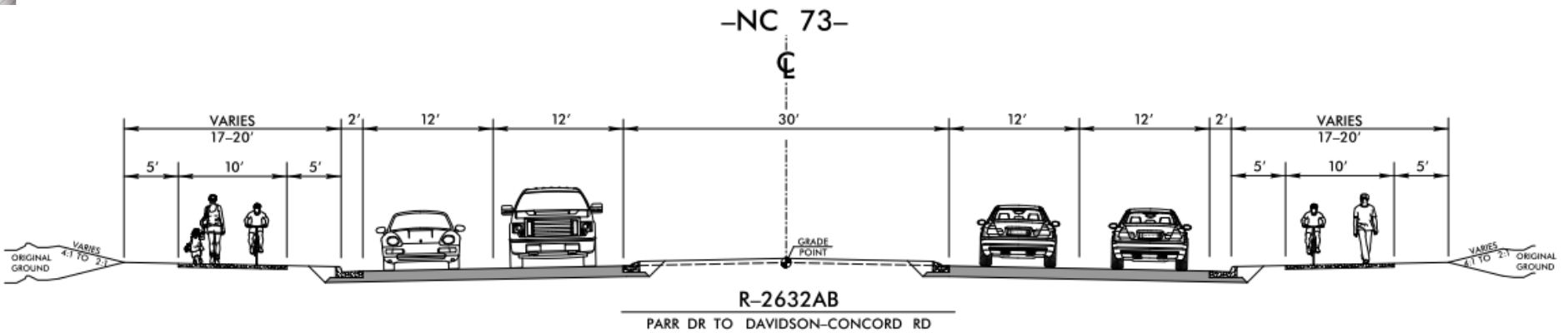
Figure 3D

PROJECT PURPOSE & NEED

The current year (2017) annual average daily traffic (AADT) along NC 73 ranges from 18,400 vehicles per day (vpd) to 20,000 vpd. In 2040, NC 73 is expected to carry between 39,600 vpd and 46,000 vpd. Population and employment growth will increase travel demand along NC 73, with most sections of the roadway forecasted to increase in traffic volumes by approximately 130 percent in 2040.

The purpose of the project is to reduce congestion on NC 73 between NC 115 and Davidson-Concord Road, and to provide bicycle and pedestrian accommodations.

TYPICAL SECTION



Tentative Project Schedule (Subject to Change)

First Public Meeting	Nov-18
Preliminary Design	Dec-18
Second Public Meeting	Feb-19
Final Document	Summer 2019
ROW Date	2020

PROJECT SCOPING

INDIVIDUAL UNITS INPUT

- Division 10
- Program Development
- Roadway Design
- Structure Design
- Hydraulics Unit
- Rail
- WZTC
- Utilities
- EAU - Noise & Air, Cultural Resources
- EAU - Public Involvement, Community Studies
- EAU - ECAP
- Roadside Environment
- Bicycle and Pedestrian
- Utilities
- Congestion Management
- STIP
- Right of Way
- Location and Surveys

AGENCY INPUT

- FHWA
- USACE
- NCDWR
- US EPA
- USFWS
- NCWRC
- SHPO
- CRTPO

LOCAL OFFICIALS INPUT

- Town of Huntersville
- Town of Davidson
- Town of Cornelius

QUESTIONS?

SUMMARY/ADJOURN