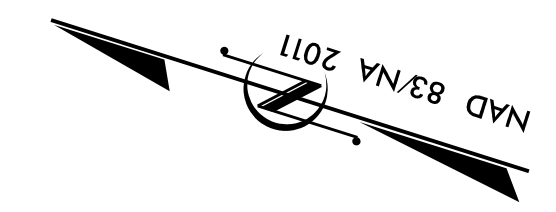
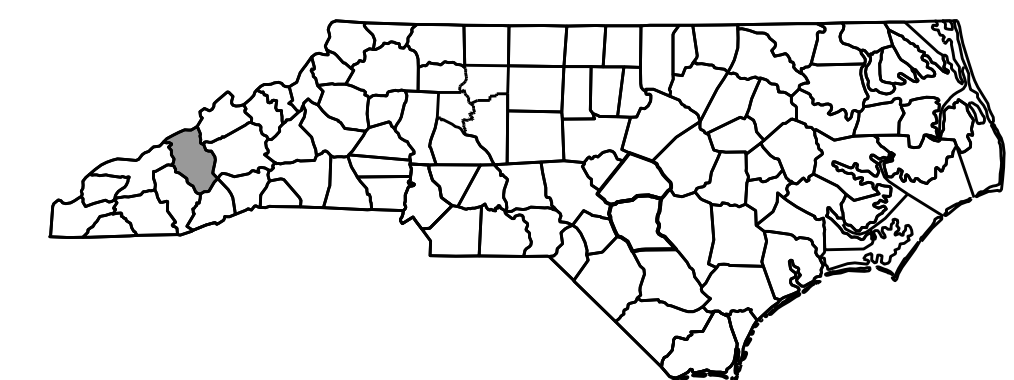


PRELIMINARY PLANS
DO NOT USE FOR CONSTRUCTION

STATE OF NORTH CAROLINA
DIVISION OF HIGHWAYS

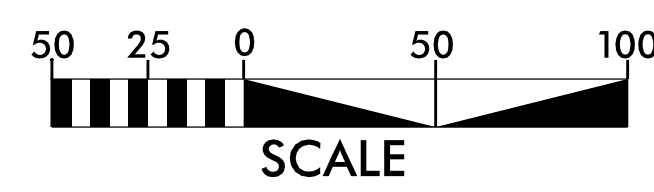
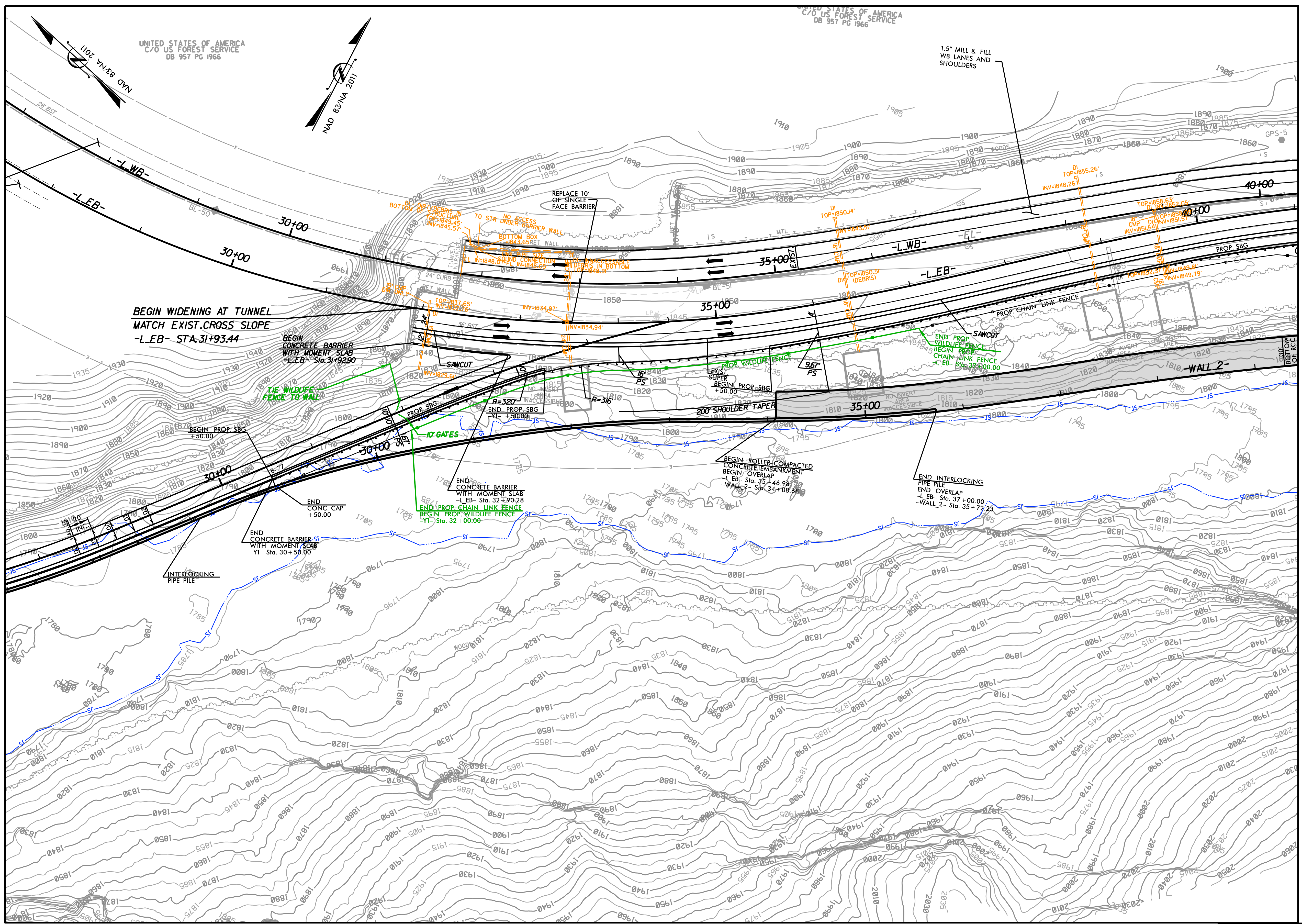
HAYWOOD COUNTY

WILDLIFE CROSSING PLANS



3/17/2026
c:\pwworking\rkk\production\d0173853\1-40 Pigeon River_WCS_TSH.dgn

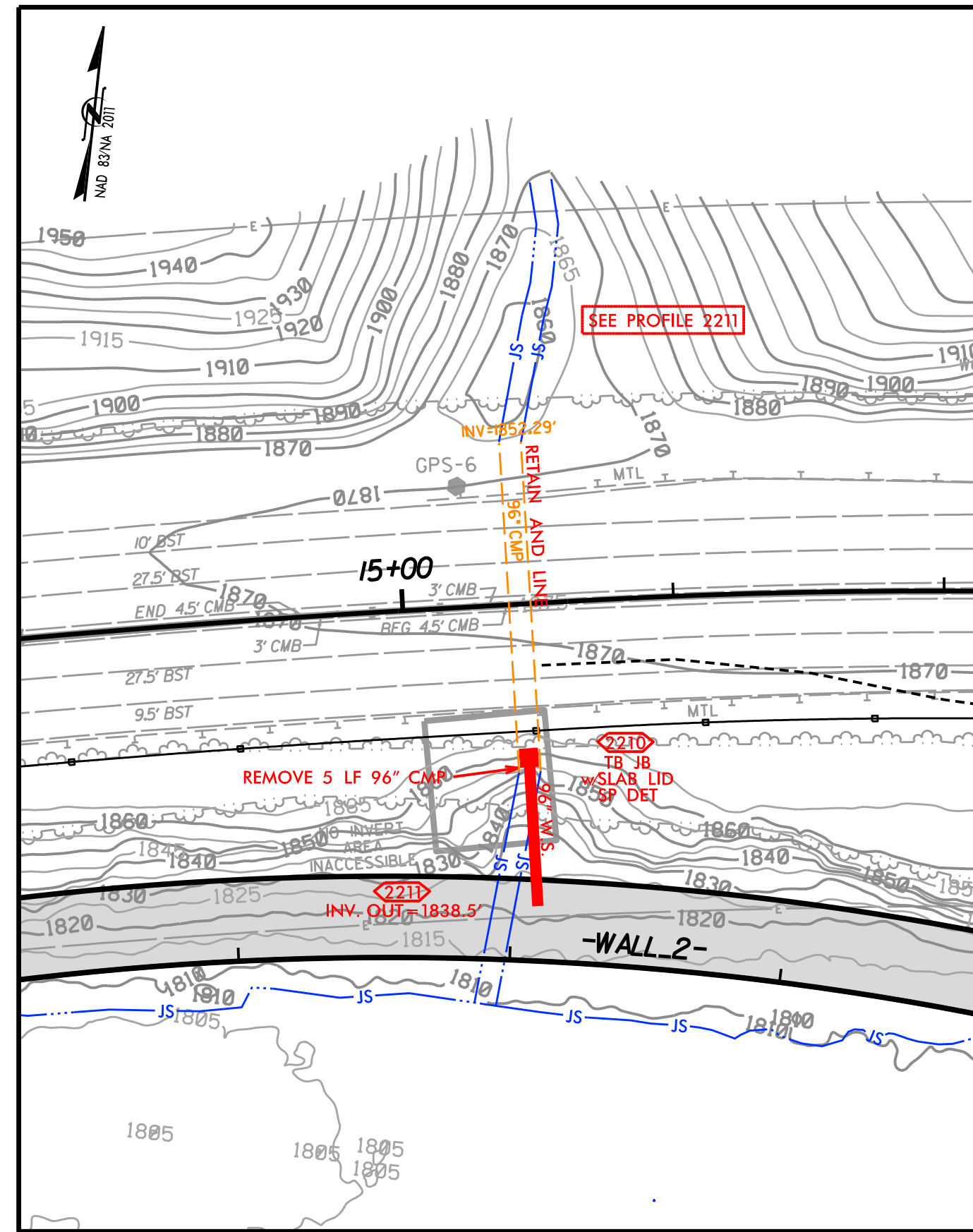
RK&K
P: (919) 978-9560
8601 Six Forks Road, Forum 1, Suite 700
Raleigh, North Carolina 27615-3960
NC License No. F-0112
Engineers | Construction Managers | Planners | Scientists
www.rkk.com
Responsive People | Creative Solutions



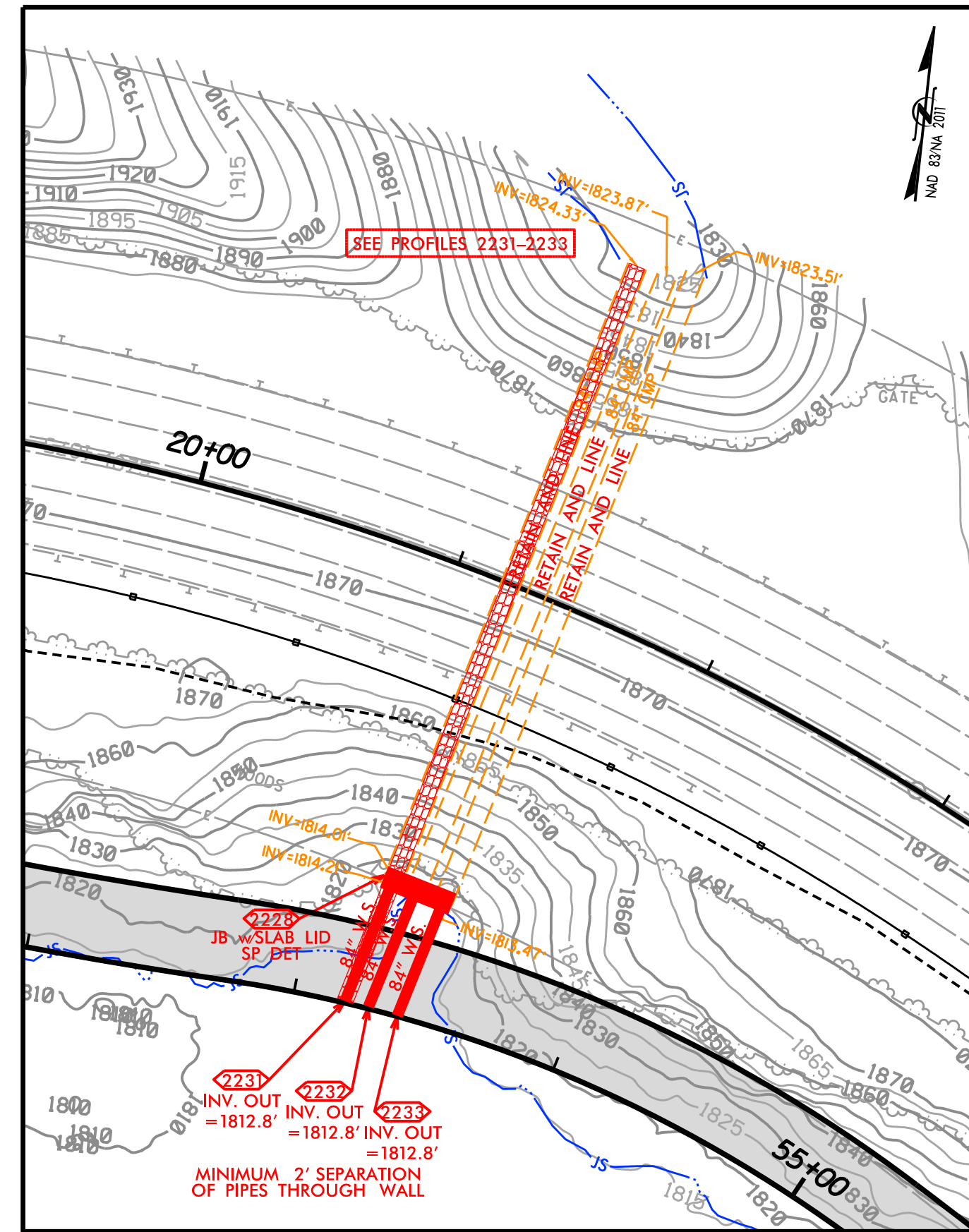
SITE 12
 DOUBLE TUNNEL

RK&K
 P: (919) 878-9560
 8601 Six Forks Road, Forum 1, Suite 700
 Raleigh, North Carolina 27615-3960
 NC License No. F-0117
 Engineers | Construction Managers | Planners | Scientists
 www.rk&k.com
 Responsive People | Creative Solutions

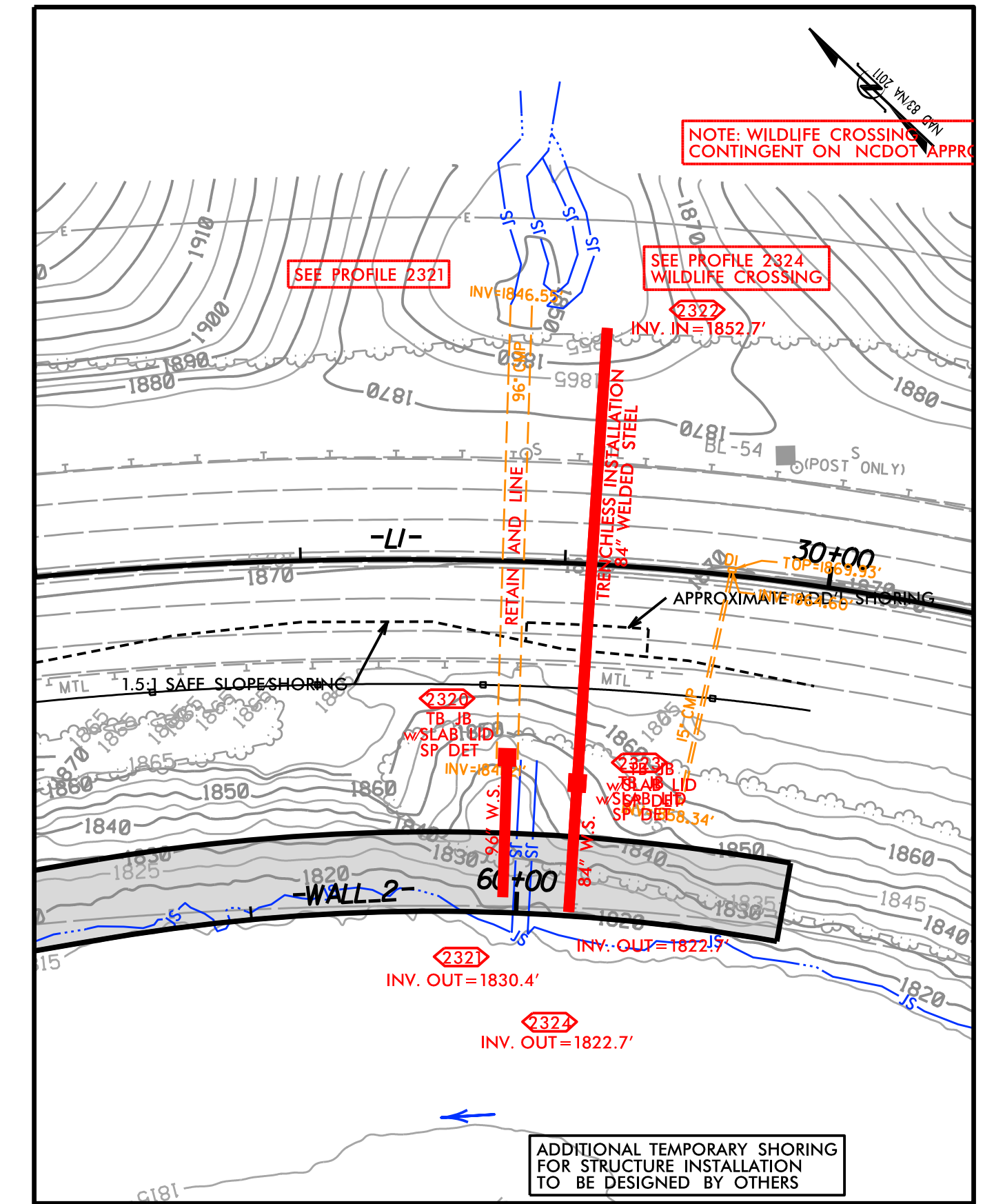
8/17/99
 3/17/2026
 C:\work\p\kk\production\d0173853\I-40 Pigeon River WCS_Site12.dgn
 MANAGER



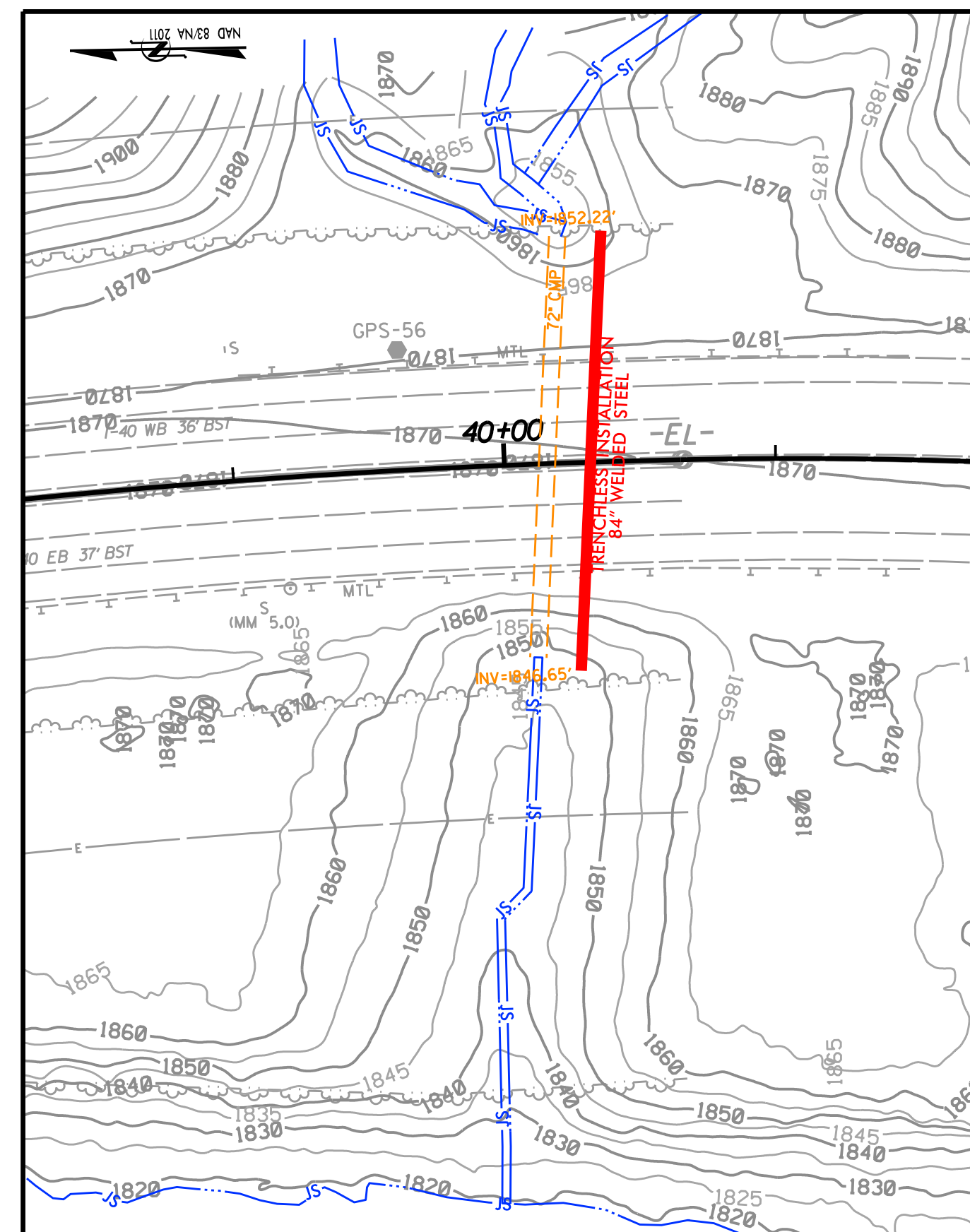
SITE II
SKIFFLEY CREEK CULVERT
HYDRAULIC ONLY



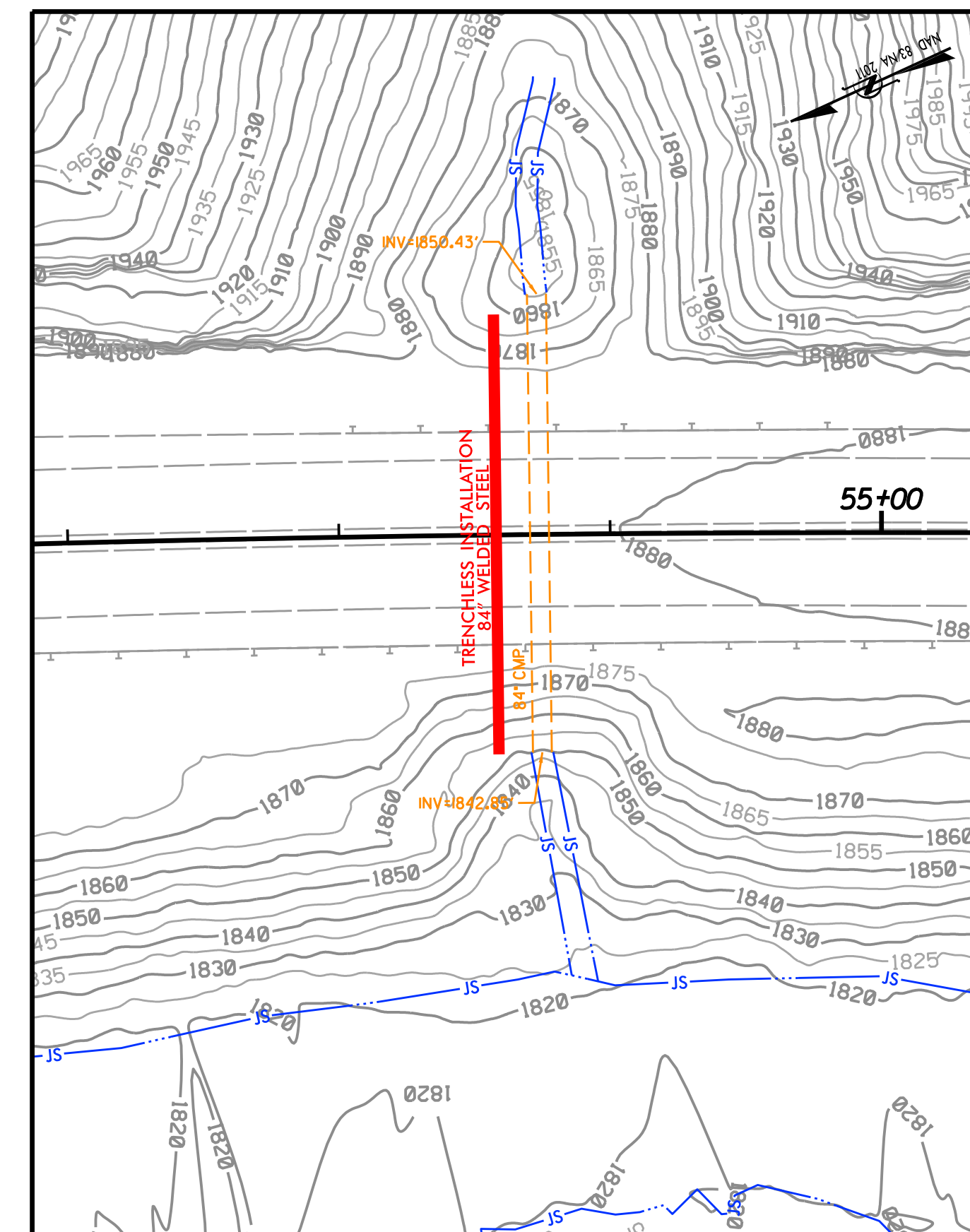
SITE II
GROUNDHOG CREEK CULVERTS



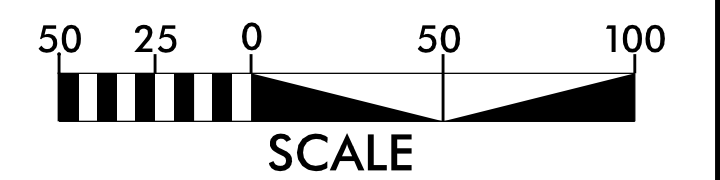
SITE II
RUBE ROCK BRANCH CULVERT



SITE II
TOM HALL BRANCH CULVERT

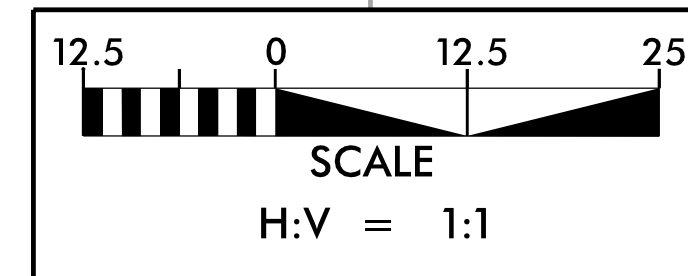


SITE II
WHITE OAK FLATS BRANCH CULVERT



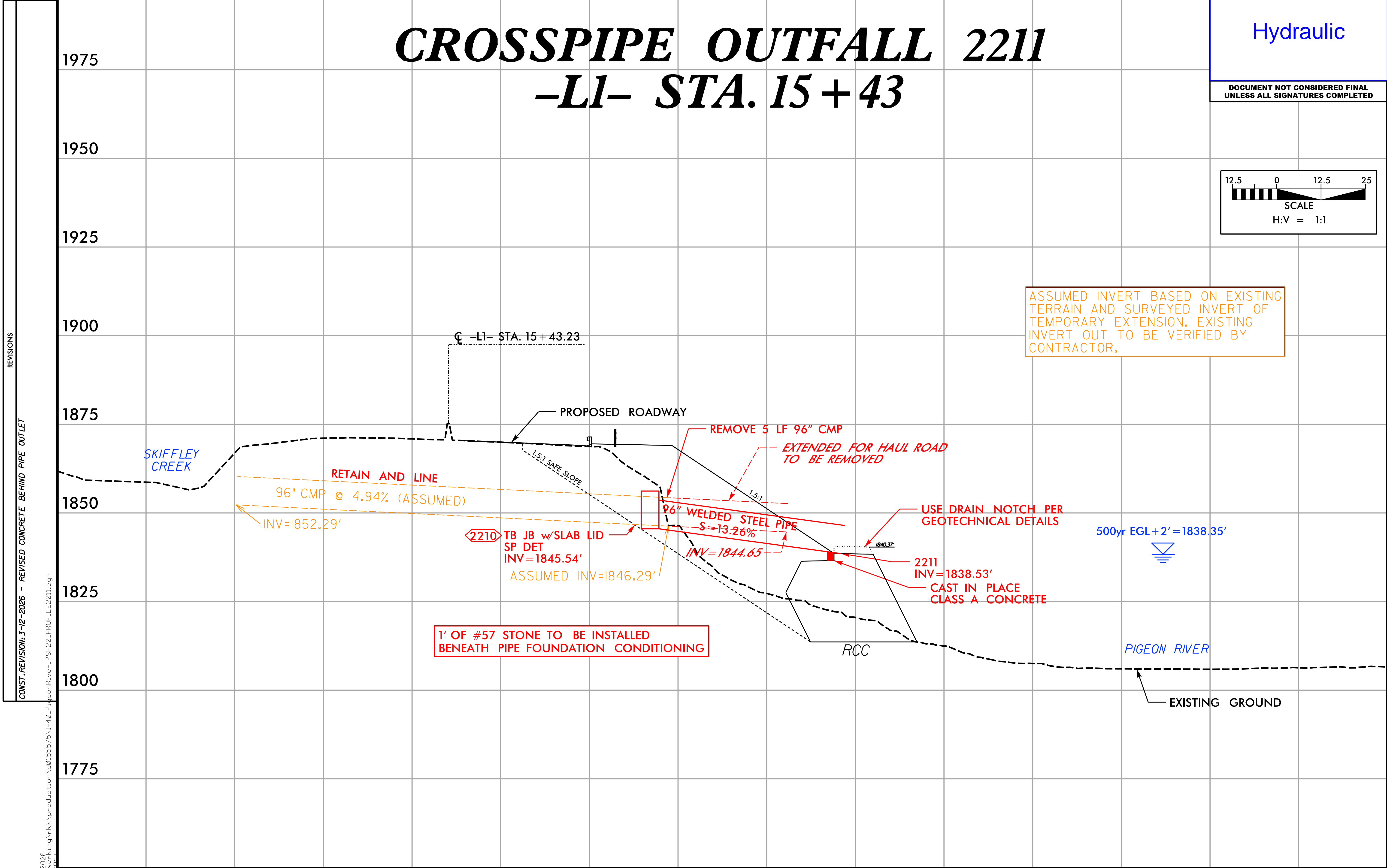
Hydraulic

DOCUMENT NOT CONSIDERED FINAL
UNLESS ALL SIGNATURES COMPLETED



CROSSPIPE OUTFALL 2211 -L1- STA. 15+43

ASSUMED INVERT BASED ON EXISTING TERRAIN AND SURVEYED INVERT OF TEMPORARY EXTENSION. EXISTING INVERT OUT TO BE VERIFIED BY CONTRACTOR.



REVISIONS
 CONST. REVISION: 3-12-2026 - REVISED CONCRETE BEHIND PIPE OUTLET

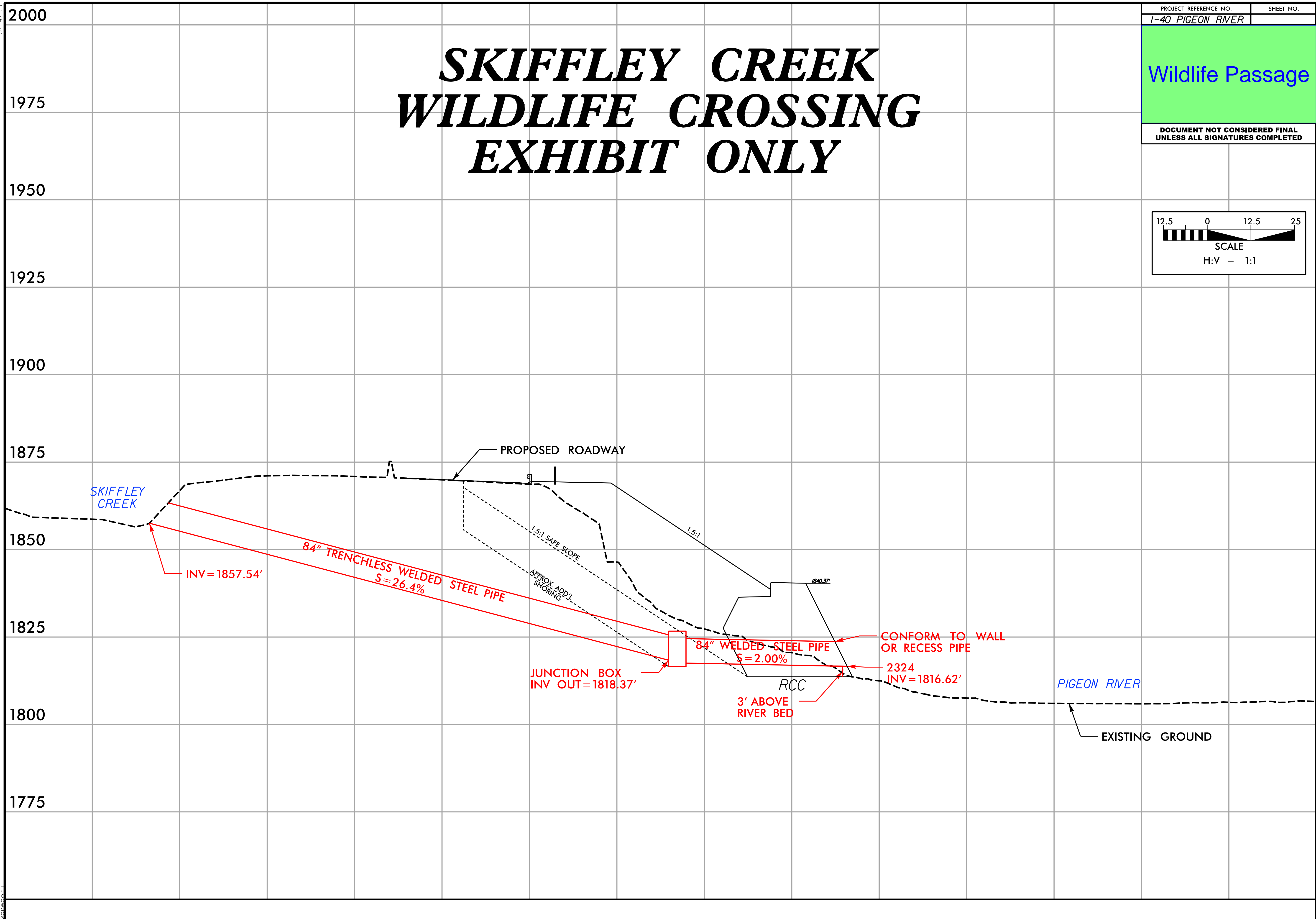
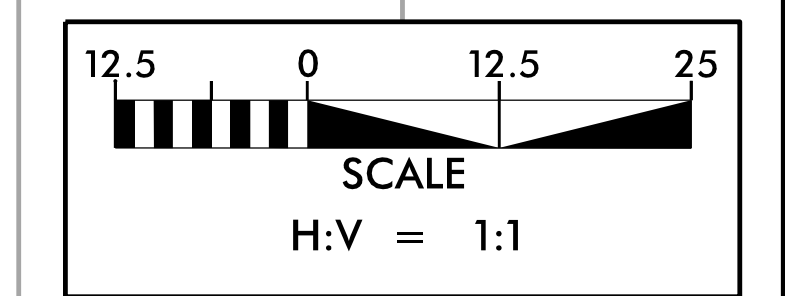
5/14/99
 3/17/2026
 C:\Users\ckking\OneDrive\Documents\0155575\1-40_PigeonRiver_PSH22_PROFITILE2211.dgn

5/14/99
3/17/2006
C:\work\ck\proj\production\0173853\1-40_PigeonRiver_Skiffley\Exhibit.dgn

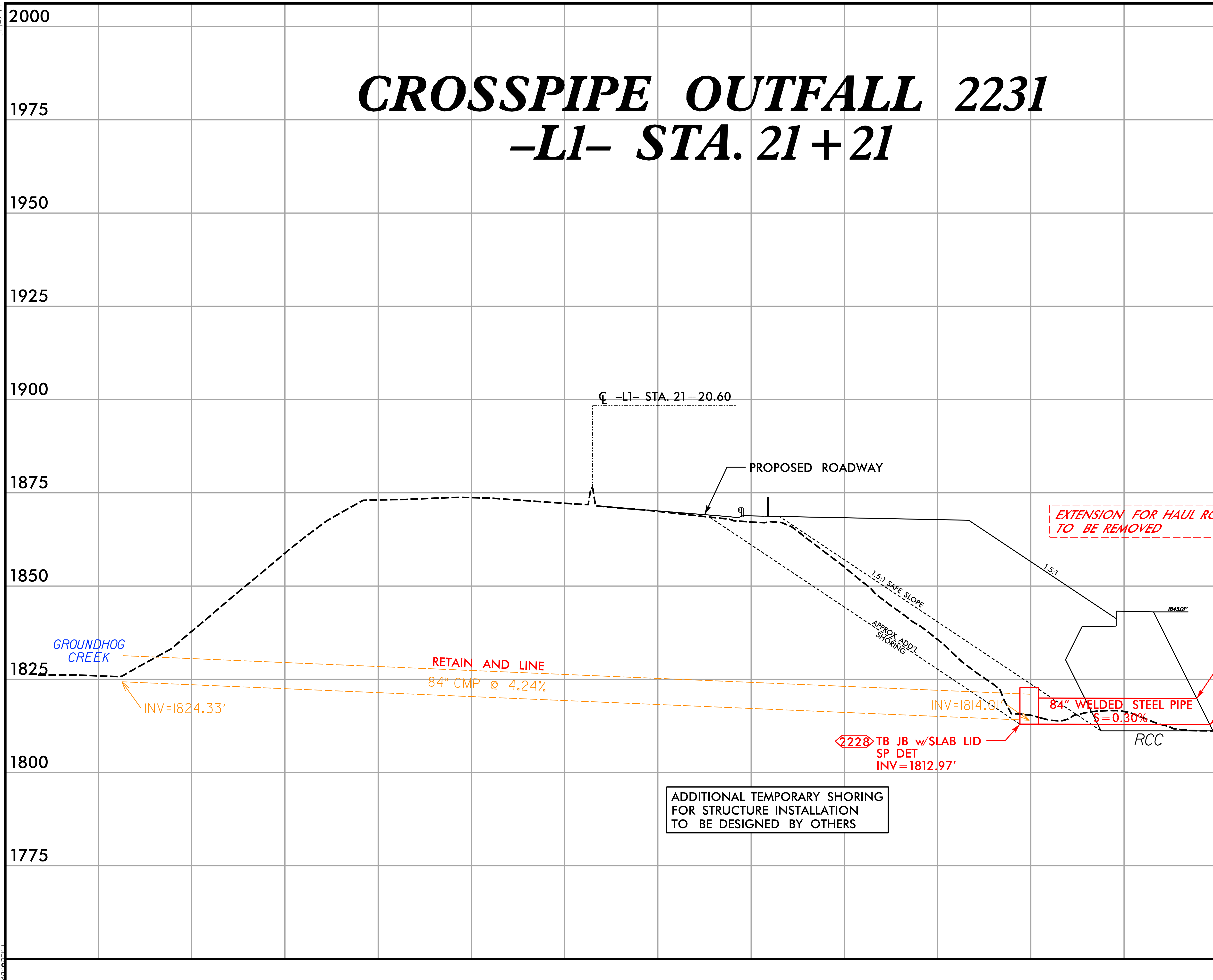
SKIFFLEY CREEK WILDLIFE CROSSING EXHIBIT ONLY

Wildlife Passage

DOCUMENT NOT CONSIDERED FINAL
UNLESS ALL SIGNATURES COMPLETED



5/14/99
3/17/2006
C:\work\king\production\0155575\1-40_PigeonRiver_PSH22_PROFILE2231.dgn

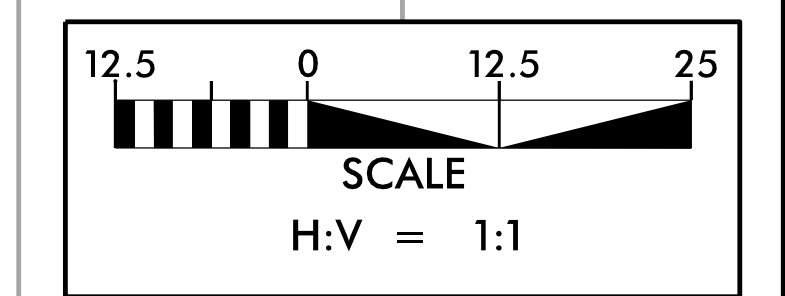


PROJECT REFERENCE NO.
I-40 PIGEON RIVER

SHEET NO.

Wildlife Passage

DOCUMENT NOT CONSIDERED FINAL
UNLESS ALL SIGNATURES COMPLETED



ADDITIONAL TEMPORARY SHORING
FOR STRUCTURE INSTALLATION
TO BE DESIGNED BY OTHERS

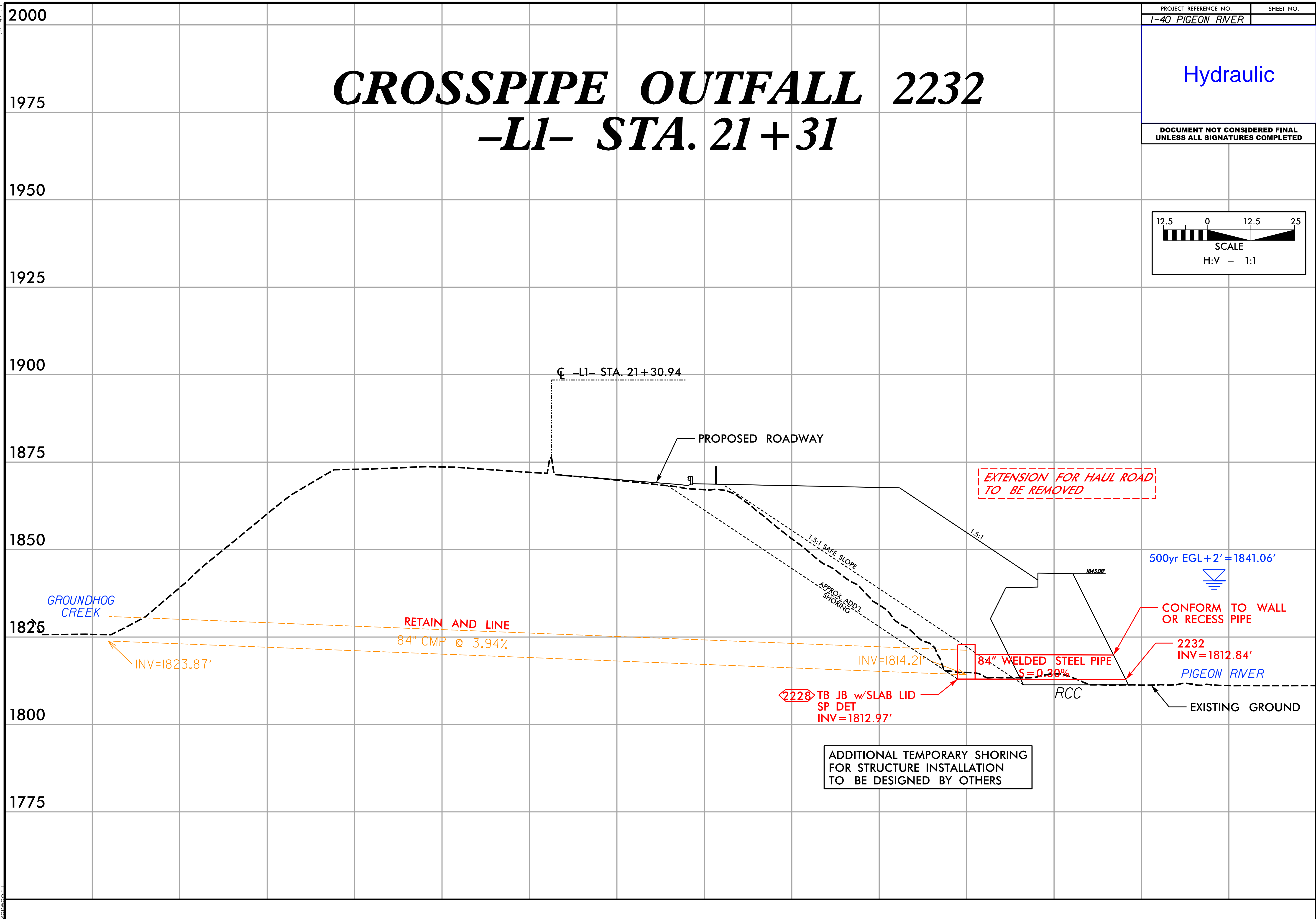
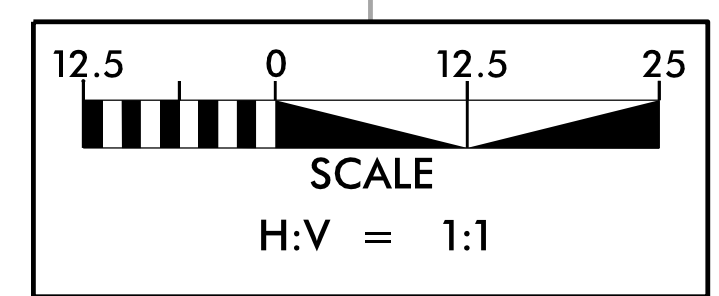
5/14/99
3/17/2006
C:\work\ckking\production\0155575\1-40-PigeonRiver_PSH22_PDF\ILE2232.dgn

CROSSPIPE OUTFALL 2232

-L1- STA. 21+31

Hydraulic

DOCUMENT NOT CONSIDERED FINAL
UNLESS ALL SIGNATURES COMPLETED



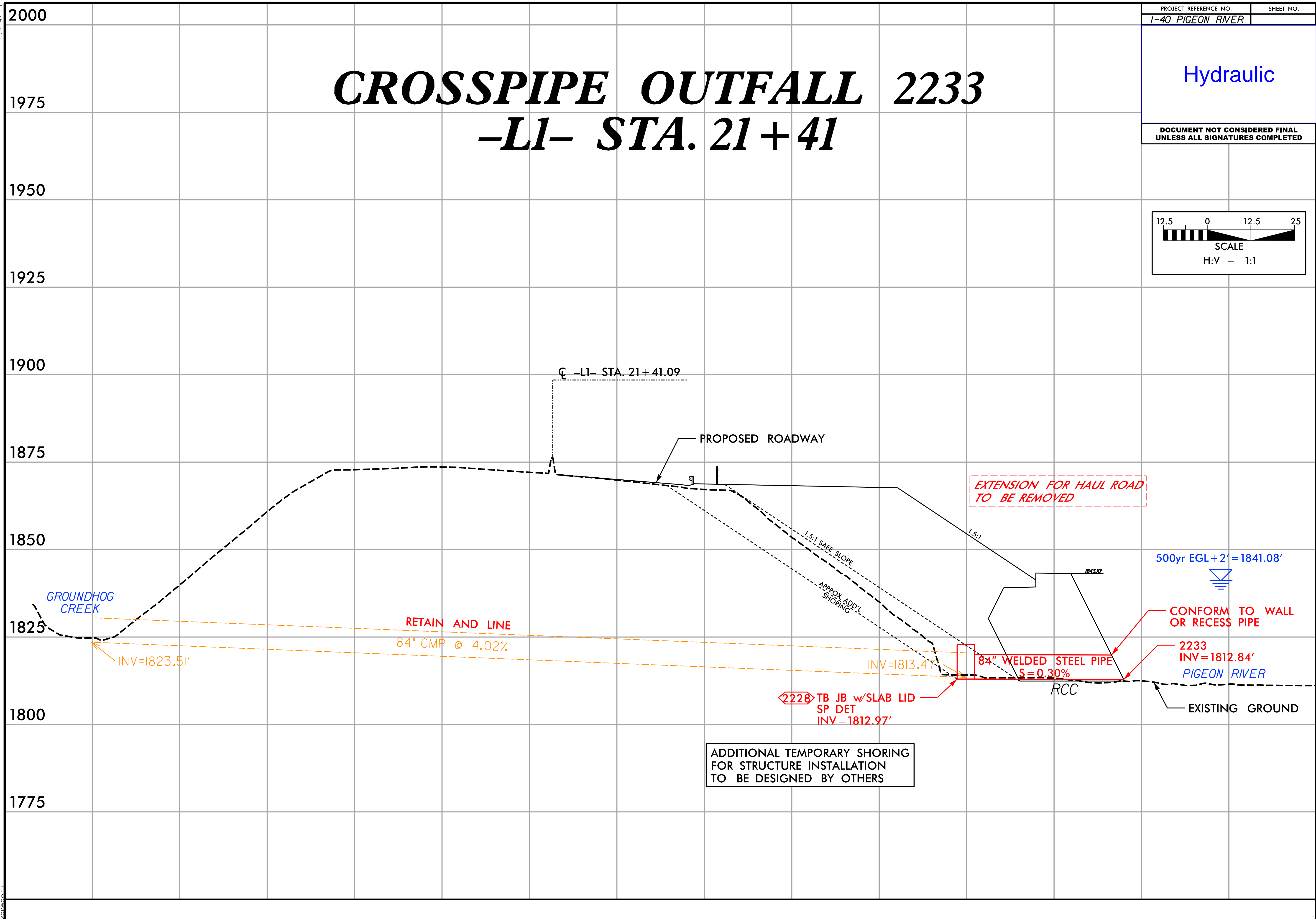
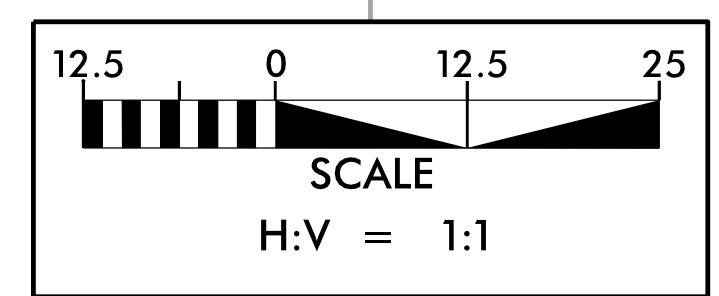
5/14/99
3/17/2006
C:\work\king\production\015575\1-40_PigeonRiver_PSH22_PROFITILE2233.dgn

CROSSPIPE OUTFALL 2233

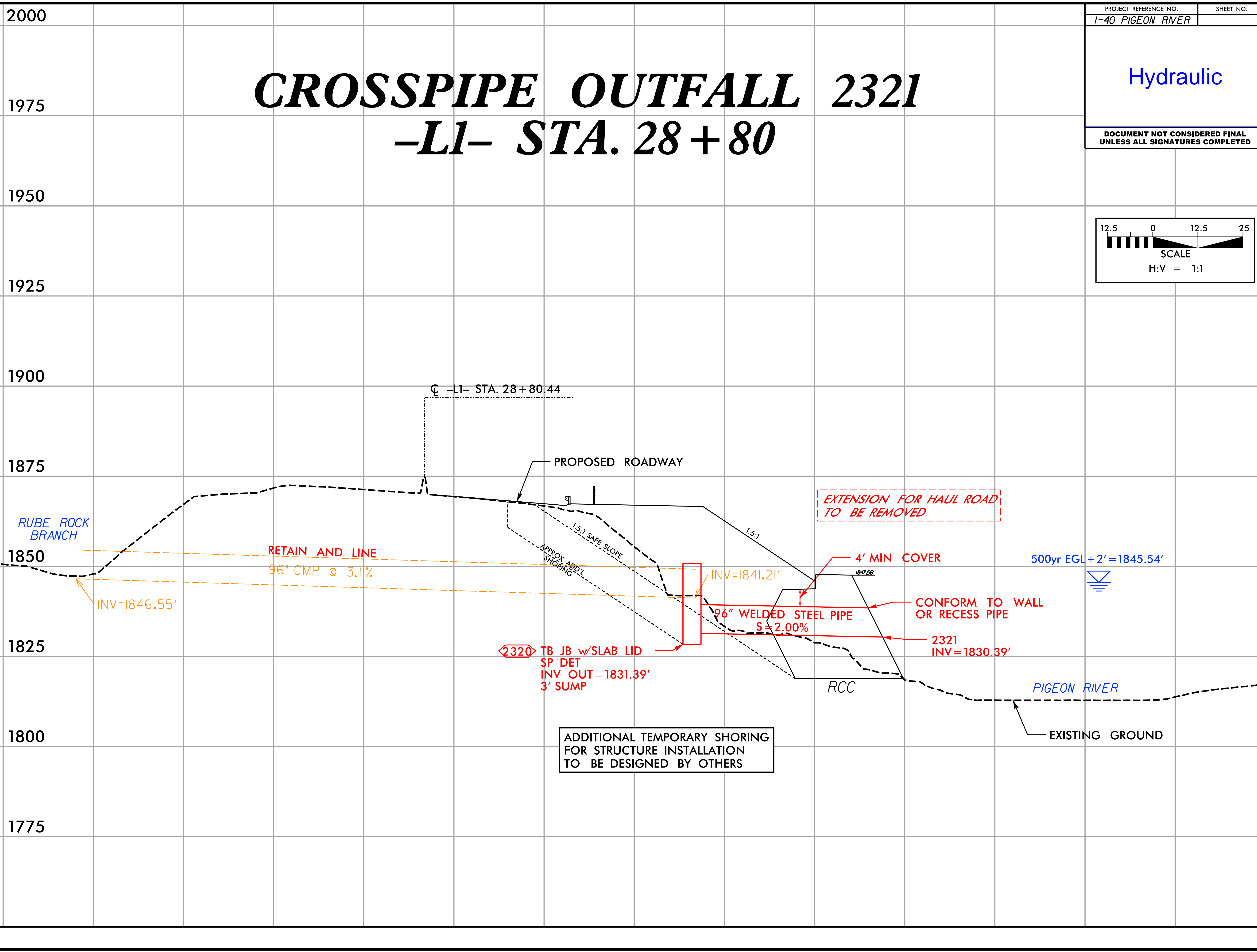
-L1- STA. 21+41

Hydraulic

DOCUMENT NOT CONSIDERED FINAL
UNLESS ALL SIGNATURES COMPLETED



5/14/99
3/17/2006
C:\work\king\production\0155575\1-40_PigeonRiver_PSH23_PROFITILE2321.dgn

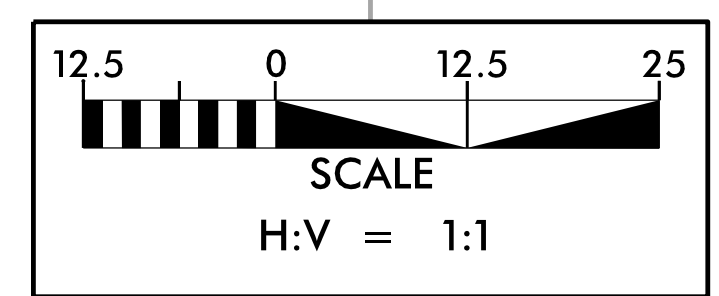


CROSSPIPE OUTFALL 2321

-L1- STA. 28+80

Hydraulic

DOCUMENT NOT CONSIDERED FINAL
UNLESS ALL SIGNATURES COMPLETED



CL -L1- STA. 28+80.44

PROPOSED ROADWAY

RUBE ROCK BRANCH

EXTENSION FOR HAUL ROAD TO BE REMOVED

1850

RETAIN AND LINE
96" CMP @ 3.11%

APPROX. ADD'L SHORING

INV=1846.55'

INV=1841.21'

4' MIN COVER

500yr EGL+2'=1845.54'

CONFORM TO WALL OR RECESS PIPE

1825

2320 TB JB w/SLAB LID
SP DET
INV OUT=1831.39'
3' SUMP

2321
INV=1830.39'

RCC

PIGEON RIVER

1800

ADDITIONAL TEMPORARY SHORING FOR STRUCTURE INSTALLATION TO BE DESIGNED BY OTHERS

EXISTING GROUND

1775

5/14/99
3/17/2006
C:\pwork\king\york\production\0155575\1-40_PigeonRiver_PSH23_PROFITILE2324.dgn

2000
1975
1950
1925
1900
1875
1850
1825
1800
1775

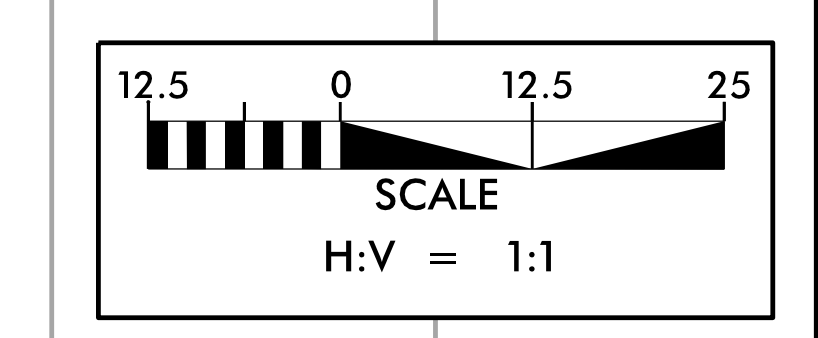
WILDLIFE CROSSING OUTFALL 2324 RUBE ROCK BRANCH -L1- STA. 29+10

PROJECT REFERENCE NO.
I-40 PIGEON RIVER

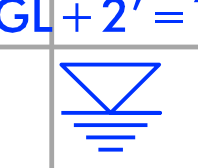
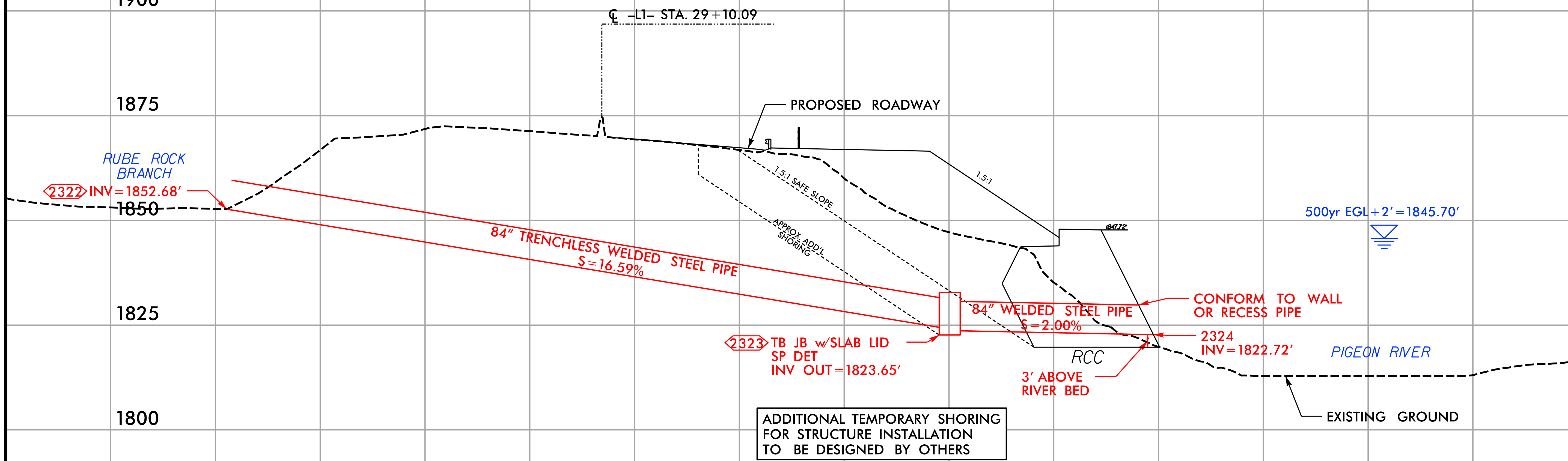
SHEET NO.

Wildlife Passage

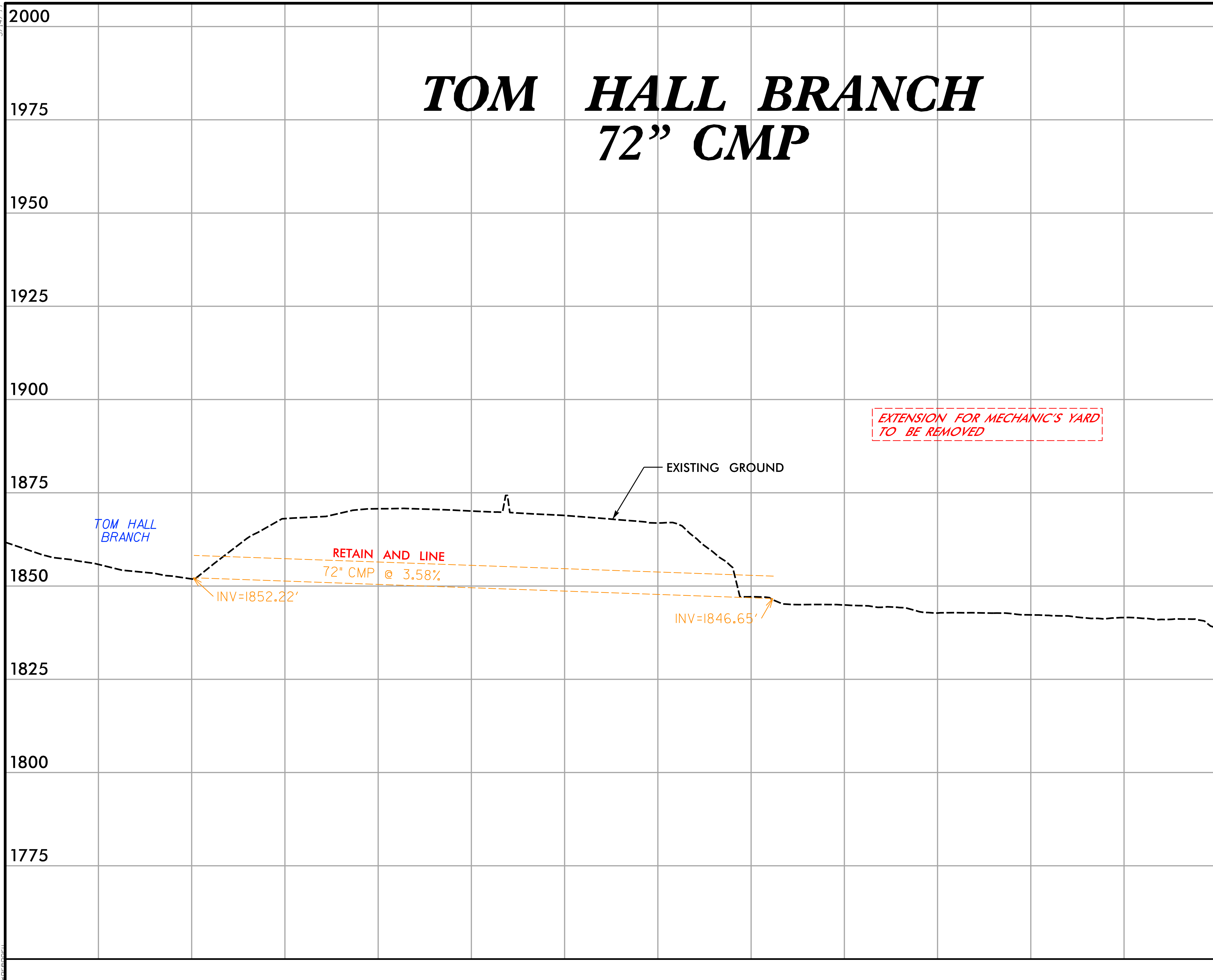
DOCUMENT NOT CONSIDERED FINAL
UNLESS ALL SIGNATURES COMPLETED



NOTE: WILDLIFE CROSSING
CONTINGENT ON NCDOT APPROVAL

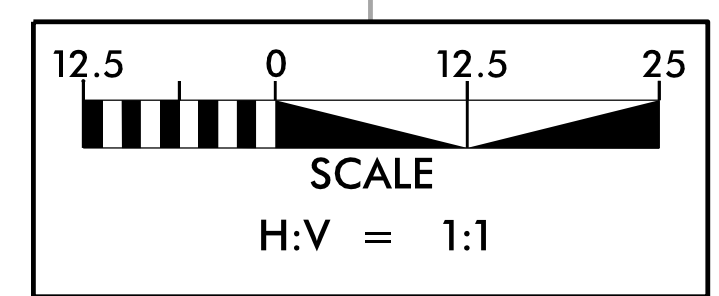


5/14/99
3/17/2006
C:\work\ck\proj\production\0173853\1-40_PigeonRiver_WCS_ExistingTomHall\Prof1.e.dgn



Hydraulic

DOCUMENT NOT CONSIDERED FINAL
UNLESS ALL SIGNATURES COMPLETED

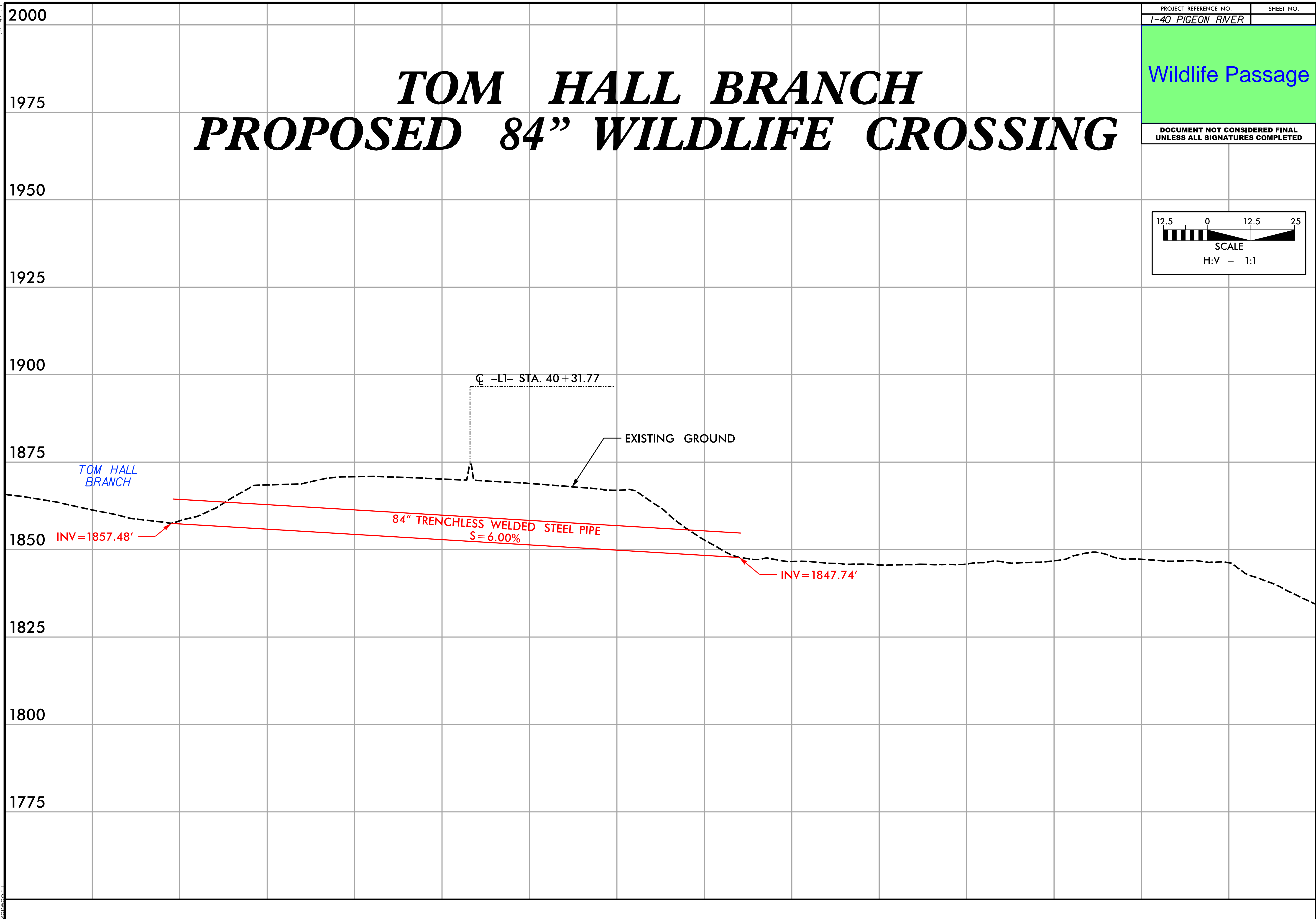
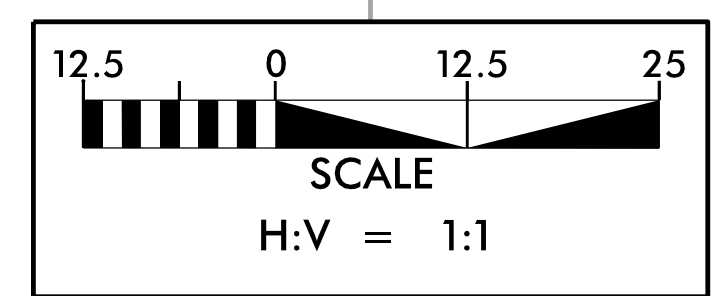


5/14/99
3/17/2006
C:\work\ckking\production\0173853\1-40_PigeonRiver_WCS_ProposedTomHall\Propof11e.dgn

Wildlife Passage

DOCUMENT NOT CONSIDERED FINAL
UNLESS ALL SIGNATURES COMPLETED

TOM HALL BRANCH PROPOSED 84" WILDLIFE CROSSING

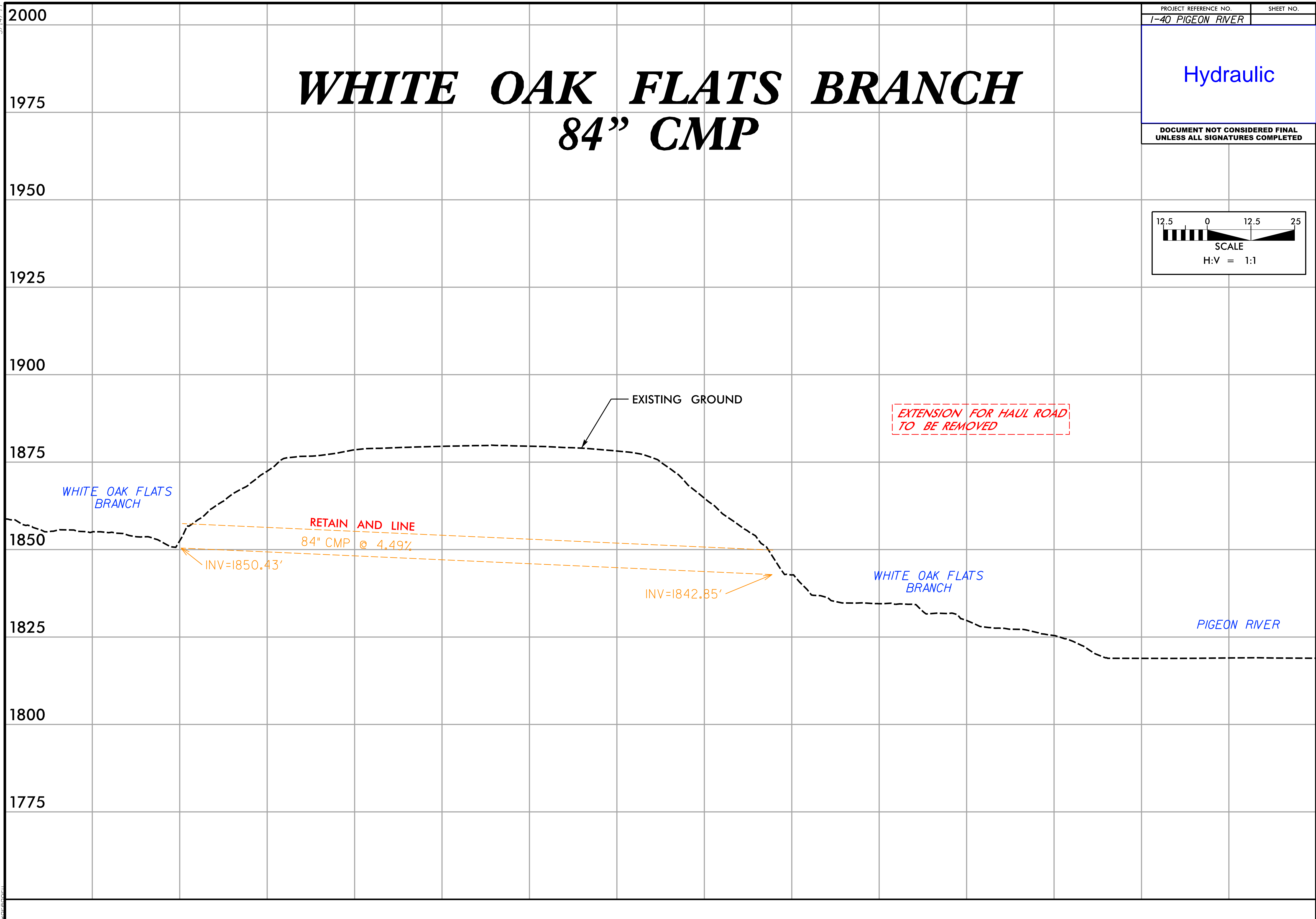
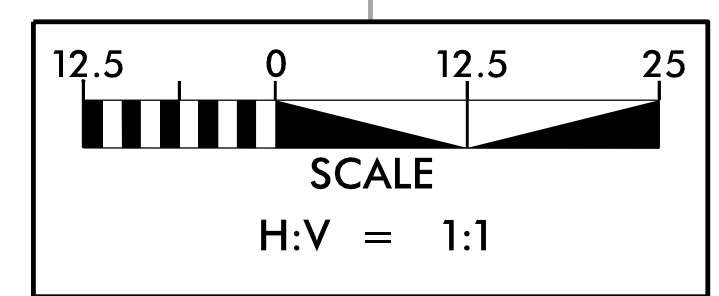


5/14/99
3/17/2006
C:\work\king\yrkk\production\0173853\1-40_PigeonRiver_WCS_ExistingWhiteOakProf1.e.dgn

WHITE OAK FLATS BRANCH 84" CMP

Hydraulic

DOCUMENT NOT CONSIDERED FINAL
UNLESS ALL SIGNATURES COMPLETED

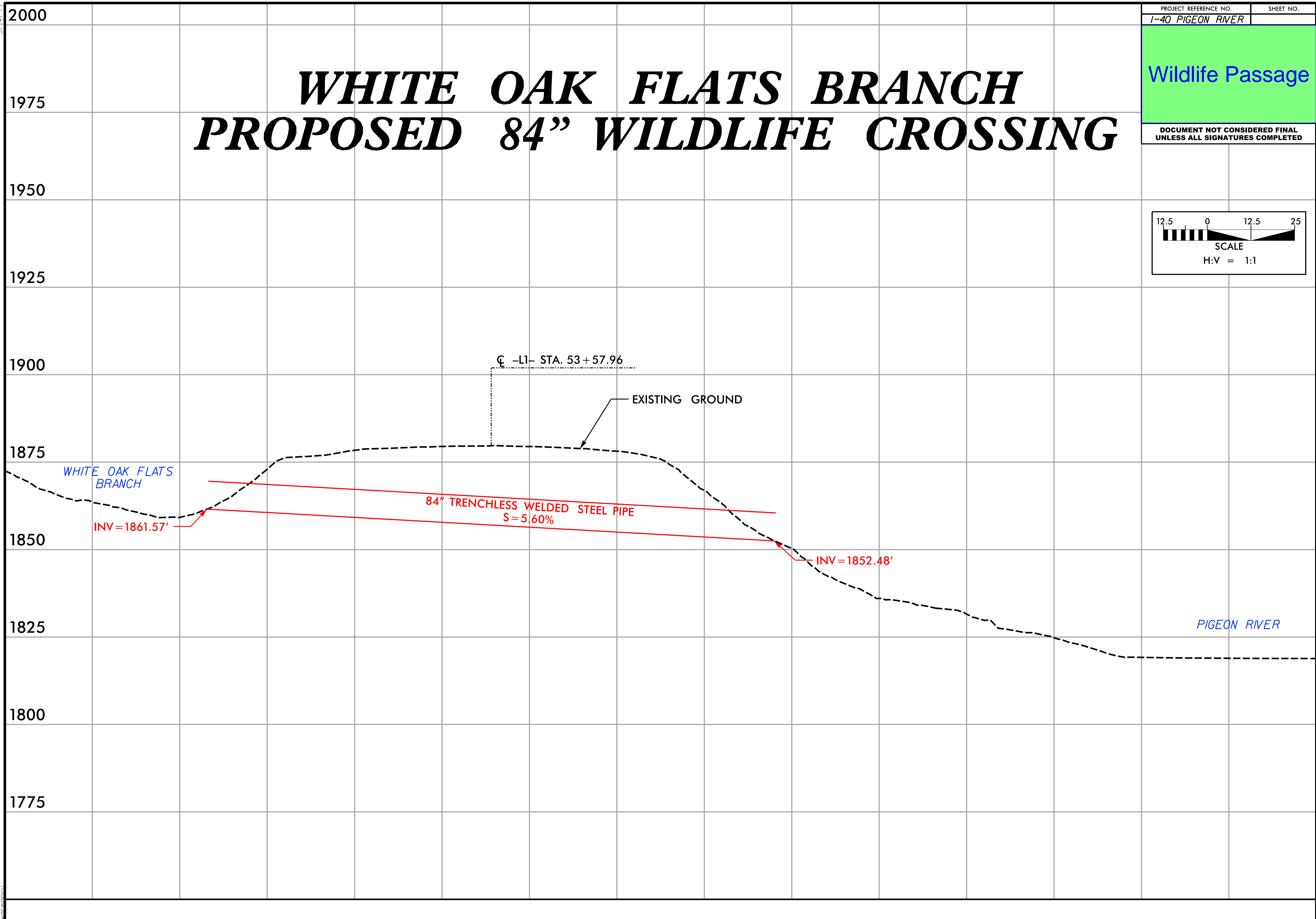
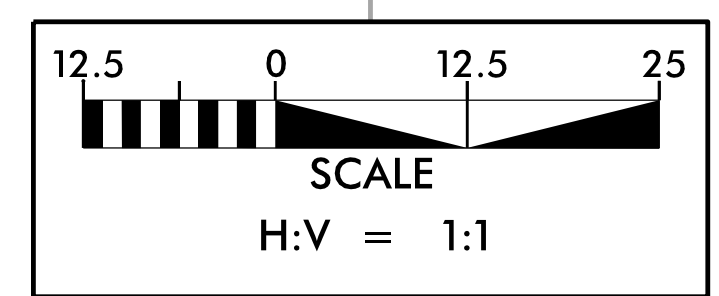


5/14/99
3/17/2026
C:\w\ock\ng\y\k\p\roduction\0173853\1-40_PigeonRiver_WCS_ProposedWhiteOakProf1.e.dgn

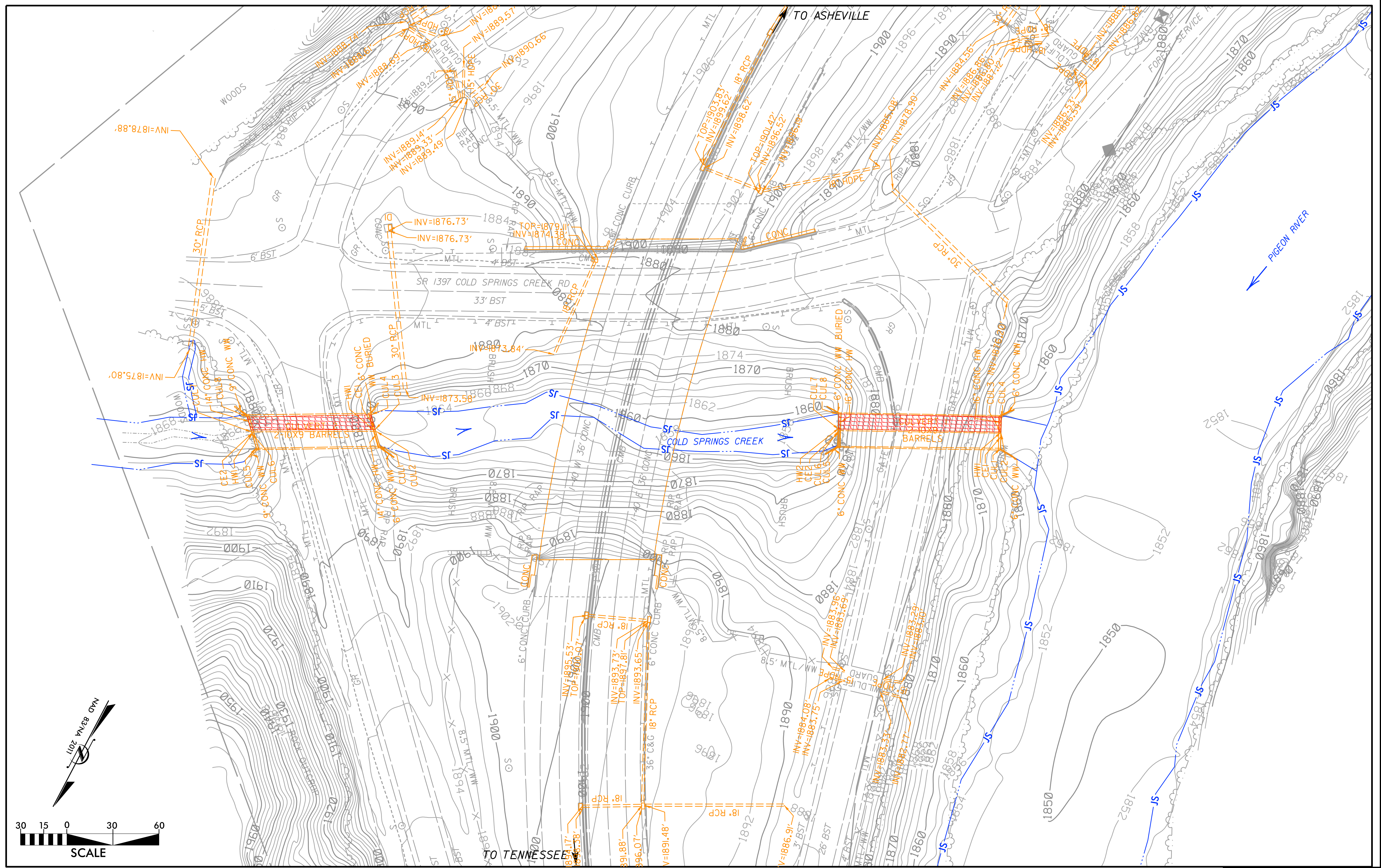
WHITE OAK FLATS BRANCH PROPOSED 84" WILDLIFE CROSSING

Wildlife Passage

DOCUMENT NOT CONSIDERED FINAL
UNLESS ALL SIGNATURES COMPLETED



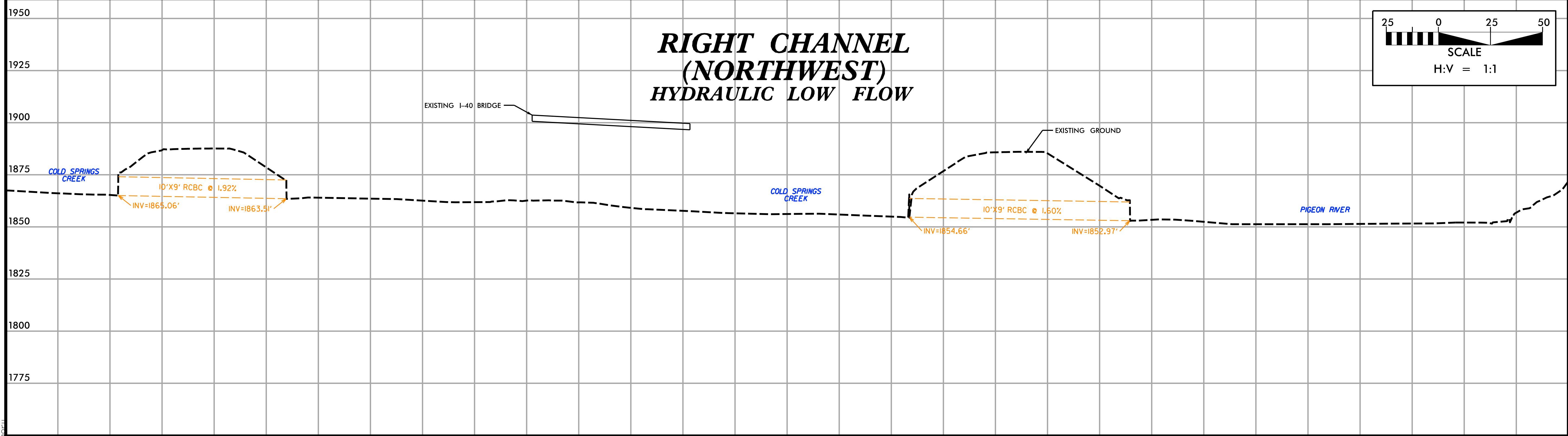
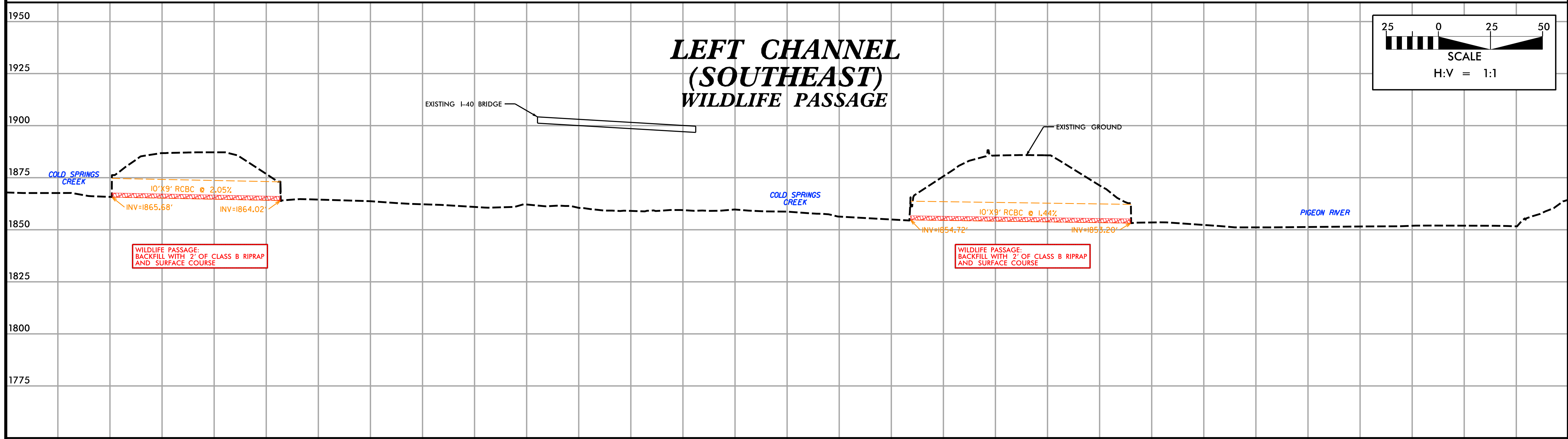
8/17/99



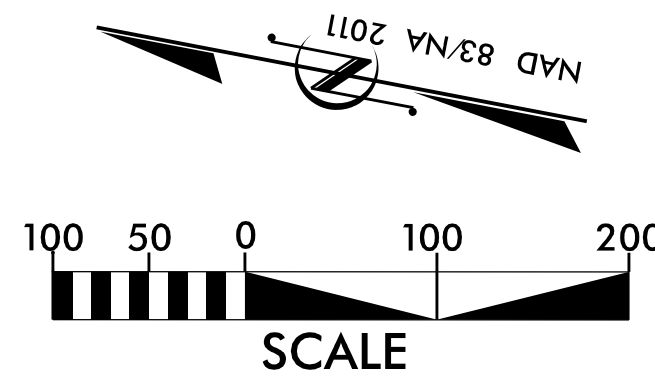
5/14/99

SITE 10: COLD SPRINGS CREEK CULVERTS DOUBLE RCBC

PROJECT REFERENCE NO. I-40 PIGEON RIVER	SHEET NO.
HYDRAULICS ENGINEER	
DOCUMENT NOT CONSIDERED FINAL UNLESS ALL SIGNATURES COMPLETED	



3/17/2006
C:\work\king\production\01738531\I-40_PigeonRiver_WCS_Site10_Prof1.es.dgn



BEGIN FENCING

SITE 6
WILKINS CREEK BOX CULVERT A
BEGIN WILDLIFE FENCING

TIE WILDLIFE FENCING
TO CULVERT WINGWALL

SITE 7
WILKINS CREEK BOX CULVERT B
END WILDLIFE FENCING

—□— PROP. WILDLIFE FENCE

RK&K
 P: (919) 878-9560
 8601 Six Forks Road, Forum 1, Suite 700
 Raleigh, North Carolina 27615-3960
 NC License No. F-0117

Engineers | Construction Managers | Planners | Scientists
www.rk&k.com

Responsive People | Creative Solutions

8/17/99
 3/17/2026
 C:\work\proj\york\production\0173853\I-40_Pigeon_River_WCS_Sites6_7.dgn