

## PROJECT DATA SHEET

TIP No: U-5798	County: Hoke Co/Cumberland Co
Federal-aid No: N/A	WBS No: 44369.1.1
NCDOT Division: 6, 8	Scoping Meeting Date: 9/29/2015

Project Description:

- Length: approximately 1.9 mi
- Termini (US Hwy/SR): From US 401 to SR 1418 (Lindsay Rd)
- MPO / RPO: FAMPO
- NEPA / 404 Merger Candidate?     Yes     No     Unknown
- General Description of Project:

4-lane median divided widening of SR 1102/1420 (Gillis Hill Rd) beginning 950 ft south of Celtic Drive to US 401 (Raeford Rd)

Design Data (Existing Conditions):

- Functional Classification: Minor Collector
- Strategic Highway Corridor: N/A
- CTP Designation (Facility Type): Arterial
- Type of Access Control: None
- Typical Section: Two-lane shoulder section
- Right of Way: Varies
- Posted Speed: 45-55 mph

- Structure Inventory (bridges, RCBC, Walls, etc):

Bridge #250075, Little Rockfish Creek, 90' long by 30' wide  
CMP Pipe 91" at Stewart Creek

- Other TIP Projects in the Area

U-5707, U-5753, U-5857, U-5858, U-2519, U-6072A, U-6051A&B, U-3422

- Railroad Involvement:

None

Initial Scoping Comments:

- The Southwestern Cumberland County and Northeastern Hoke County Multi-Modal Plan was recommended and approved in July 2013. The study pointed to several locations where congestion was expected to increase.
- The project study area crosses Little Rockfish Creek and Stewarts Creek.
- Two small residential subdivisions (Fairfield and Brookside) are located near the southern portion of the project corridor.
- The Aberdeen & Rockfish Railroad runs parallel, approximately 1,000 feet south, of the eastern boundary of the study area but is not crossed by the project corridor.

Traffic Data (AADT):

No Build	2017	7,700 to 17,000 vpd
Design Year	2040	9,700 to 20,500 vpd Traffic Forecast

Cost Estimates:

State Funding	Construction	Right-of-Way	Utilities/ Prior Year Cost	Total
TIP Estimate	\$18,696,000	\$1,598,000	1,192,000	\$21,486,000

Project Schedule:

Environmental Document:	July 2019
Right-of-Way:	March 2020
Let:	March 2022

**Purpose and Need Data:**

Draft Project Need:

The primary need for the proposed action is to address the anticipated increase in traffic volumes in the 2040 No Build Year conditions. The traffic volume is anticipated to increase up to 20% from the existing conditions. The project will also replace the structurally deficient bridge over Little Rockfish Creek.

Draft Project Purpose:

The primary purpose for the proposed action is to address the future levels of service (LOS) in the vicinity of the Rockfish community and connect with U-5707 and U-5857 to create a single, interconnected corridor through the Rockfish community, with traffic signals at key intersections and a grade-separated crossing of the active rail line.

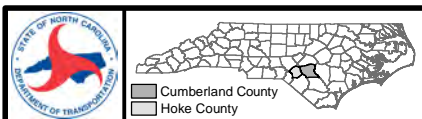
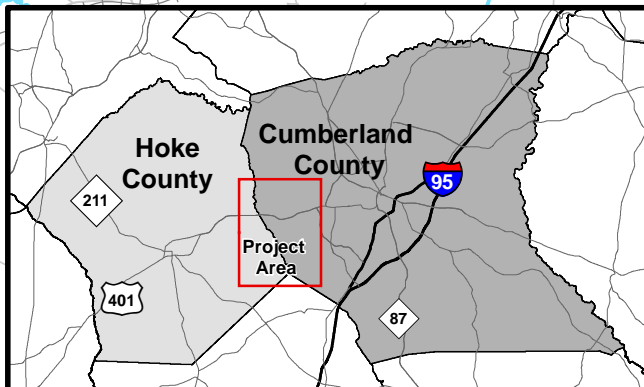
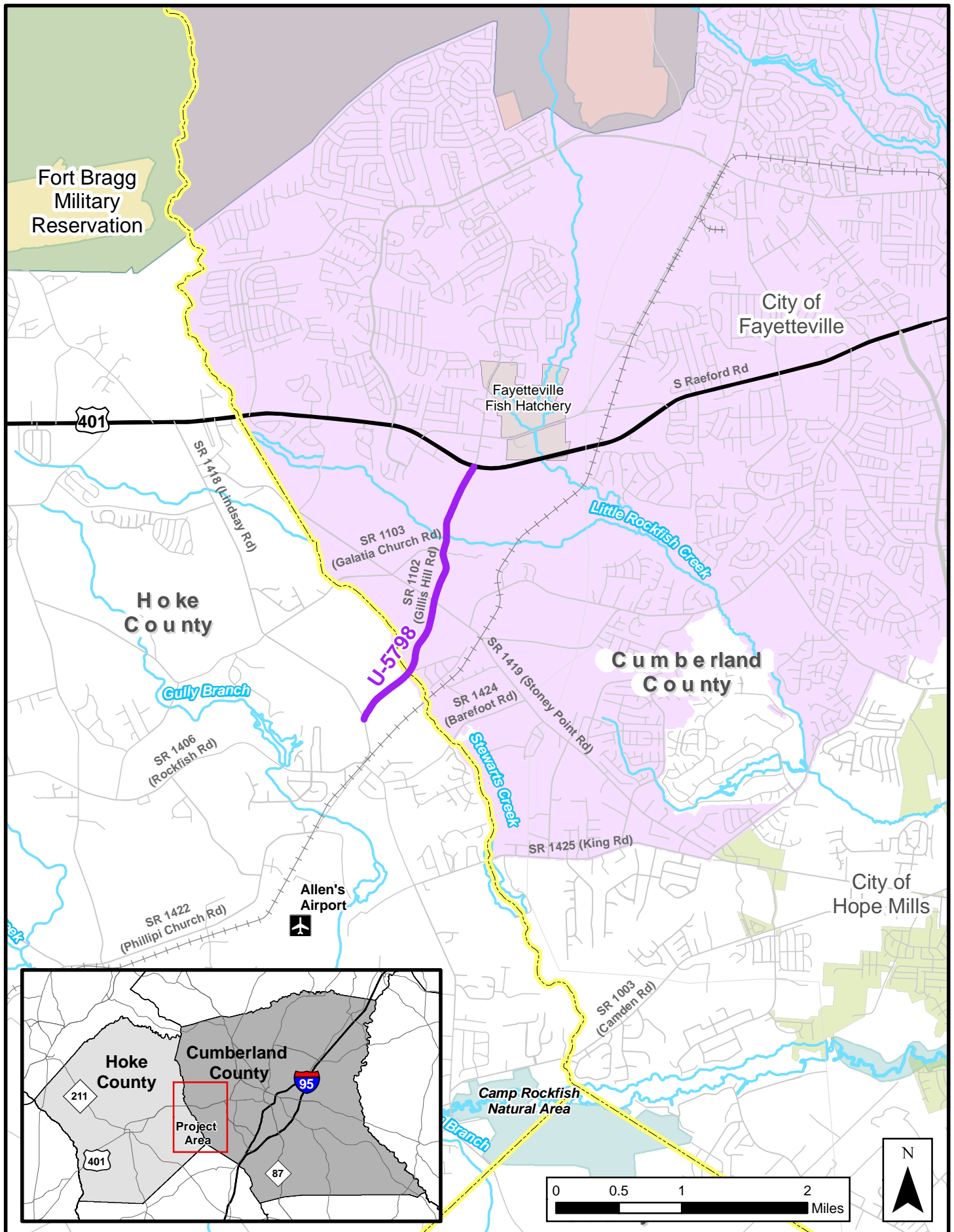
### Preliminary Corridor Resource Inventory Table:

<b>Resource/Measure</b>	<b>Study Area</b>
Length of project (to tenth of miles)	approximately 1.9 mi
Potential for Interchanges or RR crossings (#)	None
Other infrastructure (# of Wastewater treatment plants, transmission pipelines, etc.)	Pump Station on Gillis Hill Road Sanitary sewer approximately 2,500 on east side of Gillis Hill Road south of US 401
Suspected/known hazardous material sites (#)	Taylorred Control Systems, LLC located on Gillis Hill Road south of Walmart
National Register or eligible sites, districts, or other historic properties (#)	(4) McInnis House (DE), William John Gillis House (DE), Gillis Saw Mill (needs survey), and Gillis Cotton Gin (needs survey)
Community facilities such as hospitals, nursing homes, churches, schools, cemeteries, etc.) (#)	(2) Churches - West Fayetteville Baptist Church, Galatia Presbyterian Church (1) Cemetery - Galatia Presbyterian Church Cemetery
Potentially affected properties reported in the Project Scope Report Screening Checklist	TBD
NRTR Jurisdictional Wetlands (Est acres rounded to whole acre)	NRTR – TBD Wetland delineations have not yet been performed within the project areas. The potential impacts listed in the tables below are based on a GIS desktop analysis using the most recent version of the National Wetlands Inventory (NWI) and the National Hydrography Dataset (NHD). Refer to the environmental features map for more information. W1 – 0.38 ac W2 – 0.14 ac W3 – 0.04 ac W4 – 0.51 ac

<p>NRTR Streams  (# of streams and number of linear ft)</p>	<p>NRTR – TBD</p> <p>The potential impacts listed below are based on a GIS desktop analysis using the most recent version of the National Wetlands Inventory (NWI) and the National Hydrography Dataset (NHD). Refer to the environmental features map for more information.</p> <p>Stewarts Creek – 132 ft crossing  Little Rockfish Creek – 84 ft crossing</p>
<p>Critical water supply watersheds  (rounded to nearest acre)</p>	<p>None</p>
<p>Riparian Buffer rules apply  (yes/no/part)</p>	<p>None</p>
<p>Area of active agriculture (Est to the nearest acre)</p>	<p>25.63 ac west side of Gillis Hill Rd, north of Stoney Point Rd  10.32 ac east side of Gillis Hill Rd, north of Stoney Point Rd  20.51 ac east side of Gillis Hill Rd, north of Climbing Tree Ln  35.19 ac east side of Gillis Hill Rd, south of US 401</p>
<p>Parks, greenways, game lands,  land and water conservation fund  properties, etc. (#)</p>	<p>Park – Rockfish Community Park on Lindsay Road approximately 0.31 miles north of Gillis Hill Road</p>
<p>Identified critical habitat/species  under ESA (yes/no/part)</p>	<p>No T&amp;E species per the USFWS website.  NRTR – anticipated May-June 2019  Species common to Hoke and/or Cumberland Counties:  Schwalbea americana (American chaffseed) (E)  Rhus michauxii (Michaux’s sumac) (E)  Lindera melissifolia (Pondberry) (E)  Lysimachia asperulaefolia (Rough-leaved loosestrife) (E)</p>
<p>FEMA buyout properties</p>	<p>Hoke County owned land per FS (not yet verified as FEMA buyout property):  (1) Parcel: DB 440 PG 64, DB 5266 PG 286, PB 74 PG 76</p>

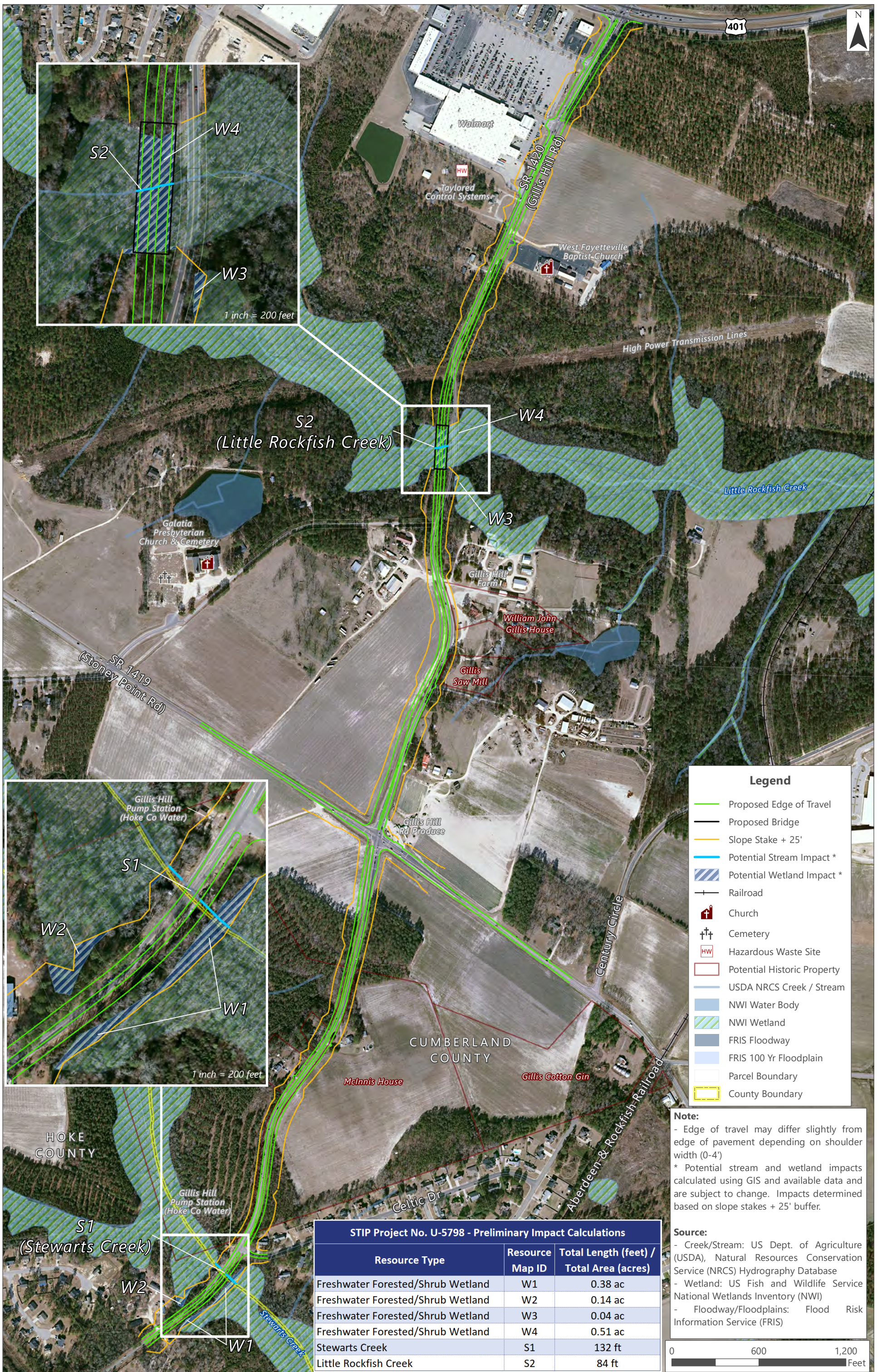
<p>Other known/suspected resources or issues (identify low income or minority community) (#)</p>	<p>Census data do not indicate a notable presence of minority or low-income populations meeting the criteria for Environmental Justice (EJ) within the DSA, nor were minority, low-income, or non-EJ Title VI communities observed within the DCIA during the field visit or noted by local planners.</p> <p>No notably adverse community impacts are anticipated with this project and no Environmental Justice populations appear to be affected; thus, impacts to minority and low-income populations do not appear to be disproportionately high and adverse. Benefits and burdens resulting from the project are anticipated to be equitably distributed throughout the community, and no denial of benefit is expected. No disparate impacts are anticipated under Title VI and related statutes.</p>
--------------------------------------------------------------------------------------------------	-------------------------------------------------------------------------------------------------------------------------------------------------------------------------------------------------------------------------------------------------------------------------------------------------------------------------------------------------------------------------------------------------------------------------------------------------------------------------------------------------------------------------------------------------------------------------------------------------------------------------------------------------------------------------------------------------------------------------------------------------------------------------------------------------------------

NOTE: This is to be used in conjunction with the Environmental Screening and Community Context Screening Maps for the purposes of evaluation the feasibility of potential corridors. Use of the table without the aid of mapping may lead to misinformed decisions.



**Hoke and Cumberland Counties**  
STIP Nos: U-5798

**Figure 1**  
Vicinity Map



**Legend**

- Proposed Edge of Travel
- Proposed Bridge
- Slope Stake + 25'
- Potential Stream Impact \*
- Potential Wetland Impact \*
- +— Railroad
- ⛪ Church
- ⛪ Cemetery
- HW Hazardous Waste Site
- Potential Historic Property
- USDA NRCS Creek / Stream
- NWI Water Body
- NWI Wetland
- FRIS Floodway
- FRIS 100 Yr Floodplain
- Parcel Boundary
- County Boundary

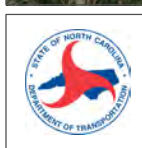
**Note:**

- Edge of travel may differ slightly from edge of pavement depending on shoulder width (0-4')
- \* Potential stream and wetland impacts calculated using GIS and available data and are subject to change. Impacts determined based on slope stakes + 25' buffer.

**Source:**

- Creek/Stream: US Dept. of Agriculture (USDA), Natural Resources Conservation Service (NRCS) Hydrography Database
- Wetland: US Fish and Wildlife Service National Wetlands Inventory (NWI)
- Floodway/Floodplains: Flood Risk Information Service (FRIS)

STIP Project No. U-5798 - Preliminary Impact Calculations		
Resource Type	Resource Map ID	Total Length (feet) / Total Area (acres)
Freshwater Forested/Shrub Wetland	W1	0.38 ac
Freshwater Forested/Shrub Wetland	W2	0.14 ac
Freshwater Forested/Shrub Wetland	W3	0.04 ac
Freshwater Forested/Shrub Wetland	W4	0.51 ac
Stewarts Creek	S1	132 ft
Little Rockfish Creek	S2	84 ft

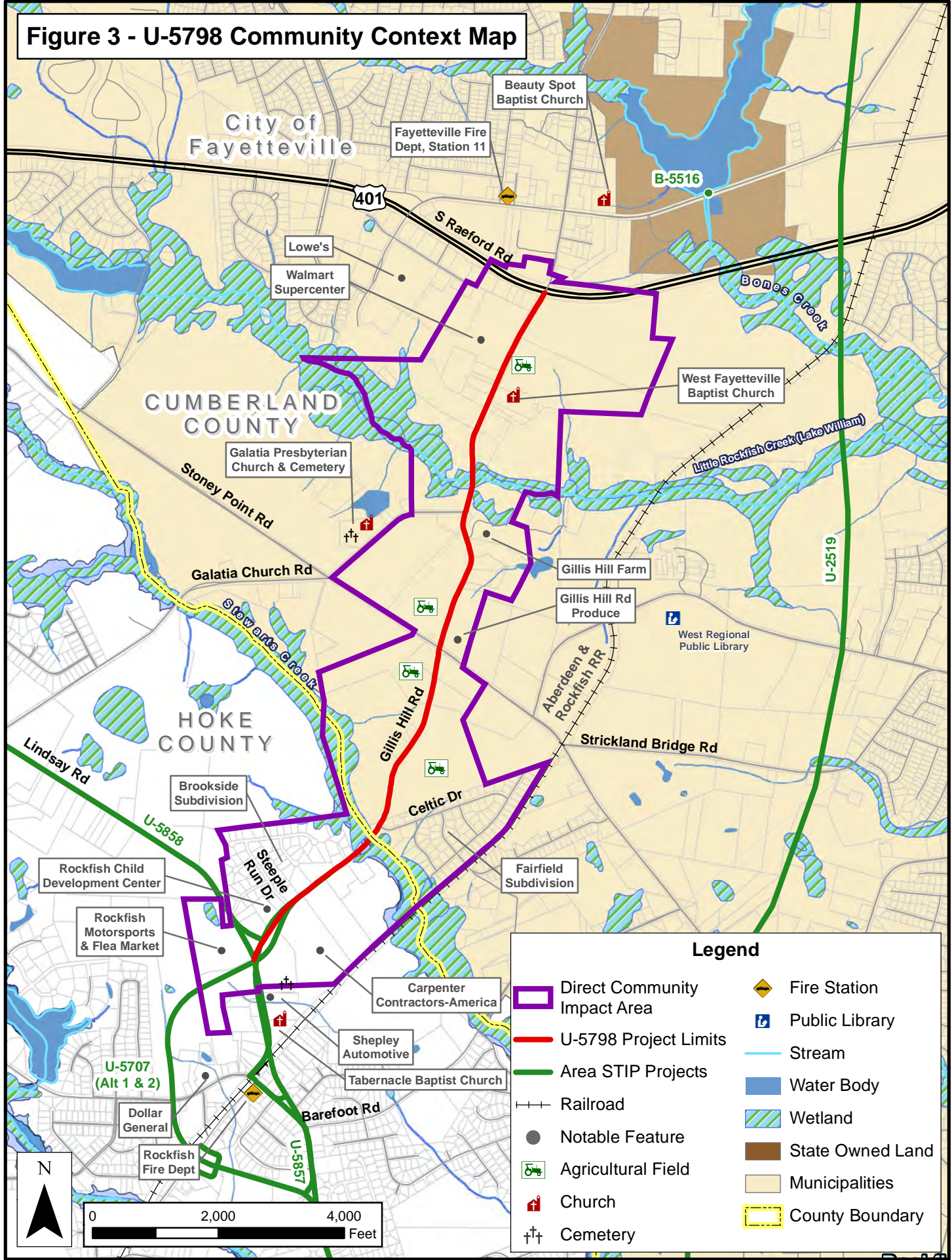


**Gillis Hills Road Widening**  
 Widen SR 1102 (Gillis Hill Road) from US 401 (Raeford Road) to south of Celtic Drive

TIP No. U-5798  
 Divisions 6 & 8  
 March 2019

**Figure 2**  
 Environmental Features Map

**Figure 3 - U-5798 Community Context Map**



**Legend**

- Direct Community Impact Area
- U-5798 Project Limits
- Area STIP Projects
- Railroad
- Notable Feature
- Agricultural Field
- Church
- Cemetery
- Fire Station
- Public Library
- Stream
- Water Body
- Wetland
- State Owned Land
- Municipalities
- County Boundary