

NCDOT Division 5 – Combined Resource Agency Meeting

January 16, 2019 - 0800-0945

STIP Projects: U-5890, U-5966, R-3608/U-6024, U-6020, I-5968, U-5969

Purpose and Goals of Meeting

- One meeting to present multiple projects anticipated to result in minimal resource impacts:
 - Provide resource agencies with project updates and gauge anticipated future involvement
 - Intent is to provide scoping-level information, streamline coordination, and save time for all parties involved
- Provide open forum for NCDOT to receive input and feedback on projects from resource agencies:
 - Q&A throughout meeting
 - Saves time spent on email/phone/written coordination
 - Avoids potential project delays
- Based on presentation and discussions:
 - Ability to better identify and screen out future projects from the Merger Process
 - Identify those projects of agency interest which may require individual meetings with regulatory agencies

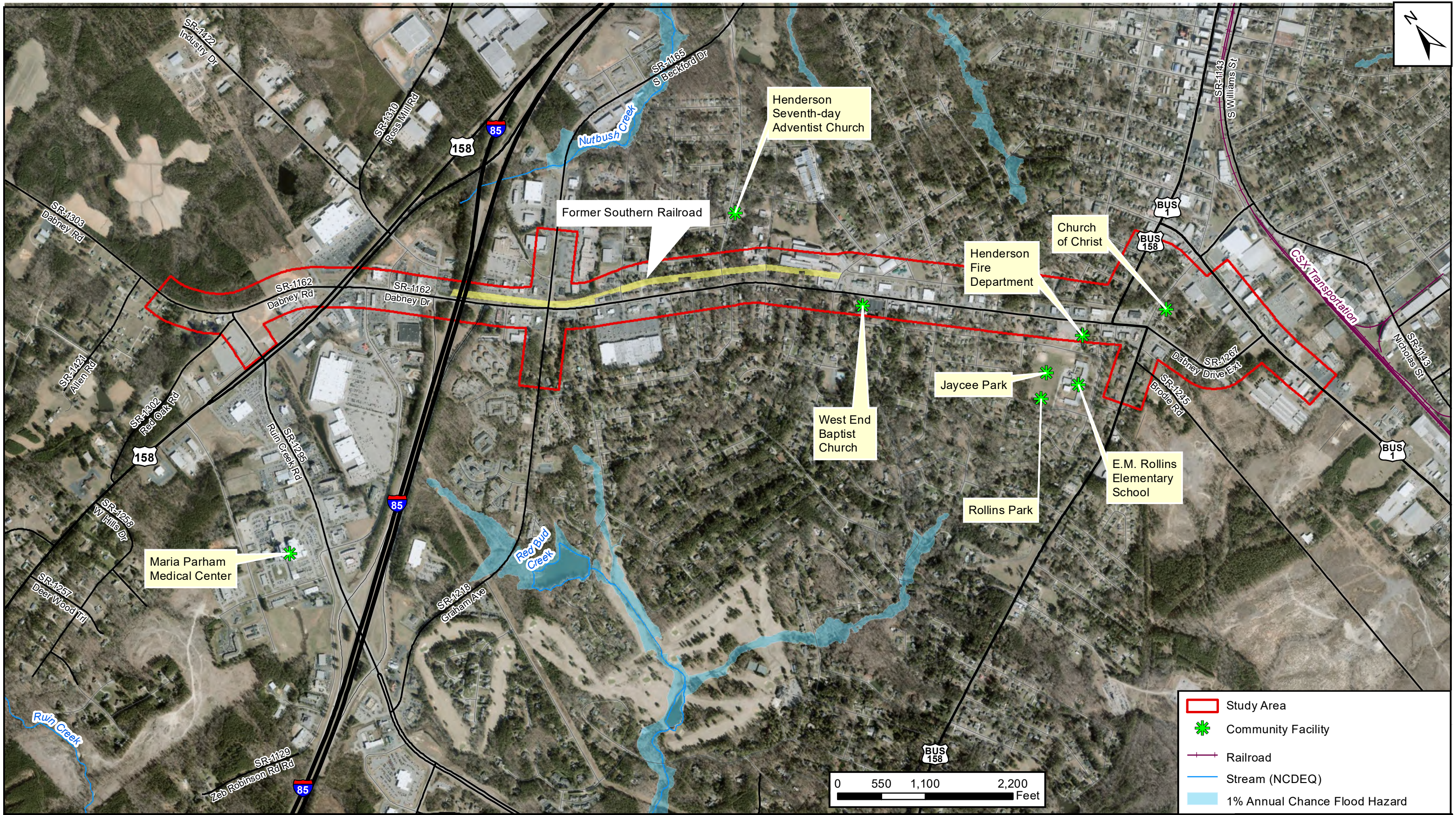
Project Milestone Schedules

STIP Project	Planning Document	Right-of-Way	Construction/Letting
U-5890	9/2019	6/2020	6/2022
U-5966	3/2020	2/2022	4/2023
R-3608/U-6024	12/2019	2/2021	2/2023
U-6020	Complete	6/2019	6/2020
I-5968	Complete	2/2020	2/2021
U-5969	9/2019	2/2020	2/2022

U-5890

Upgrade of SR 1162 (Dabney Drive)

from SR 1295 (Ruin Creek Road) to US 1 Business (Raleigh Road),
Henderson, Vance County



North Carolina Department of Transportation
 Division of Highways

U-5890

Upgrade of SR 1162 (Dabney Drive) from SR 1295 (Ruin Creek Road) to US 1 (Raleigh Road)

Henderson, Vance County

Note: Wetland and Stream delineations have not been completed. Data shown is from existing GIS sources.

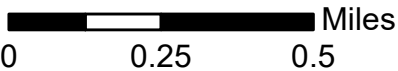
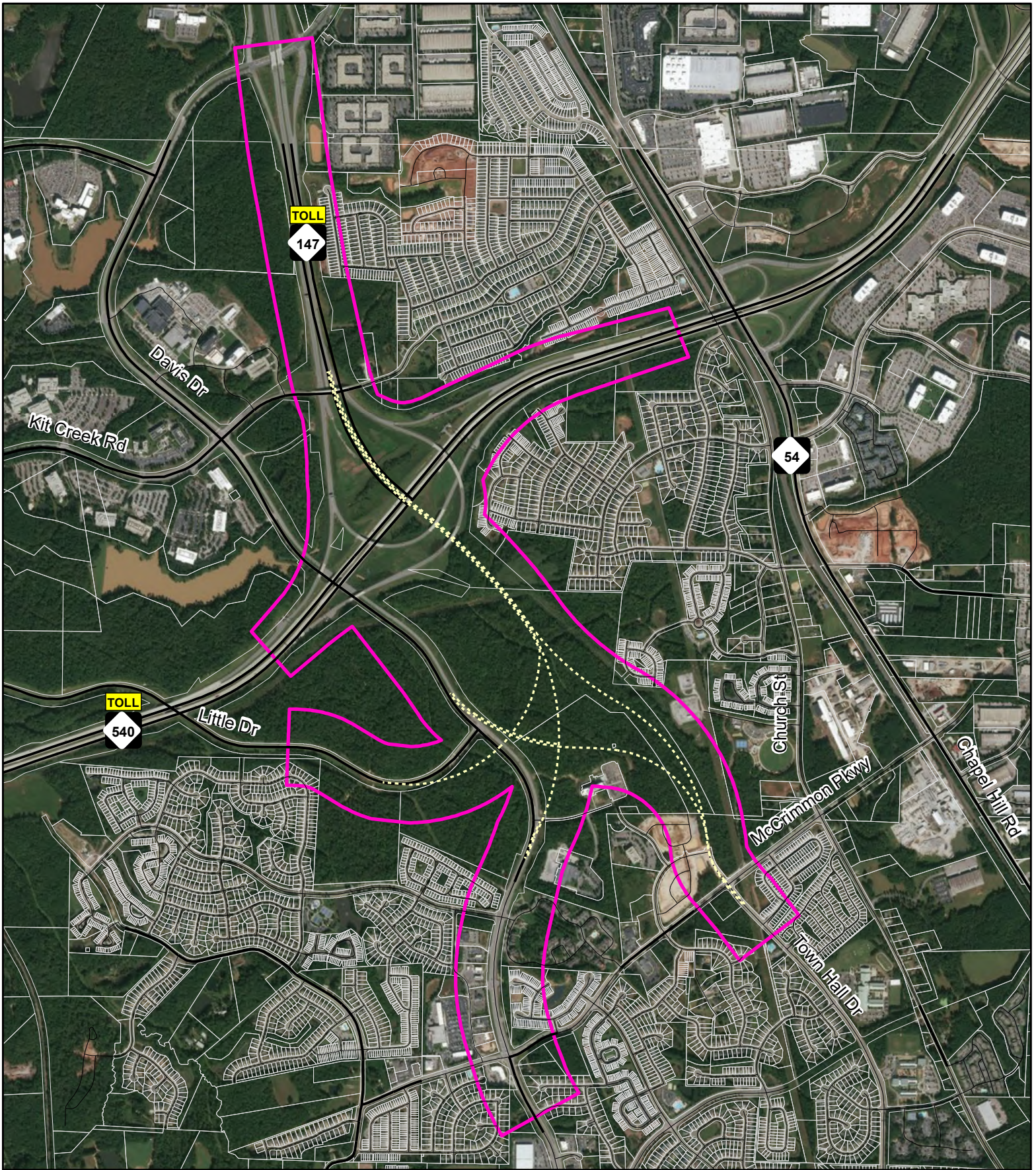
Environmental Features

Figure 2

U-5966

NC 147 Extension

from NC 540 Interchange to Little Drive
Morrisville, Wake County



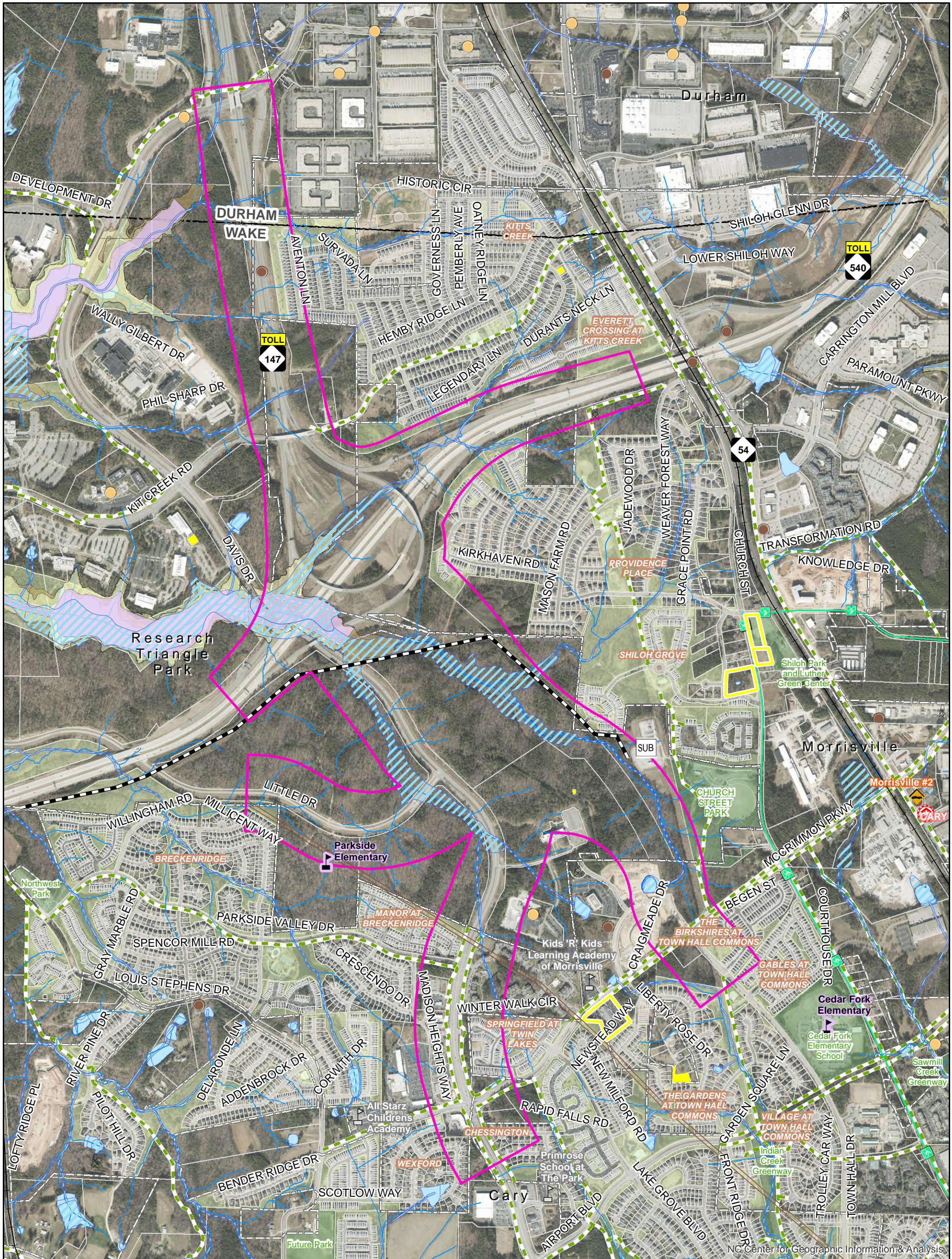
- Proposed Study Area
- Proposed Alignments
- Parcel

Proposed Study Area

STIP U-5966

**NC 147 Extension
Wake County**

Sources: NCDOT, Wake Co., NCOneMap.
(HNTB, 2018)



	Preliminary Study Area		FAA Tower (2012)		Greenway		FEMA Floodway
	Religious Property		Hazardous Waste Site		Bike Route		100-year Floodplain
	Cemetery		RUST		Open Space (Private)		500-year Floodplain
	School		Power Substation		Public Open Space		Parcel
	Day Care		PowerLine		Stream/Creek		Municipal Boundary
	Fire Station		Major Utility Easement		NWI Wetland		County Boundary
	Wake County EMS		Railroad		Open Water		

Environmental Features Map
STIP U-5966
NC 147 Extension
Wake County

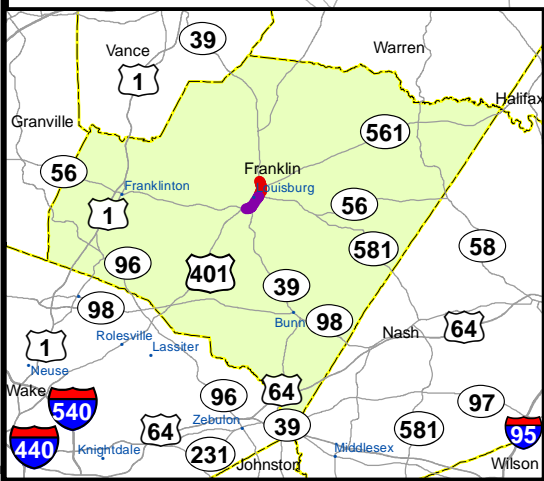
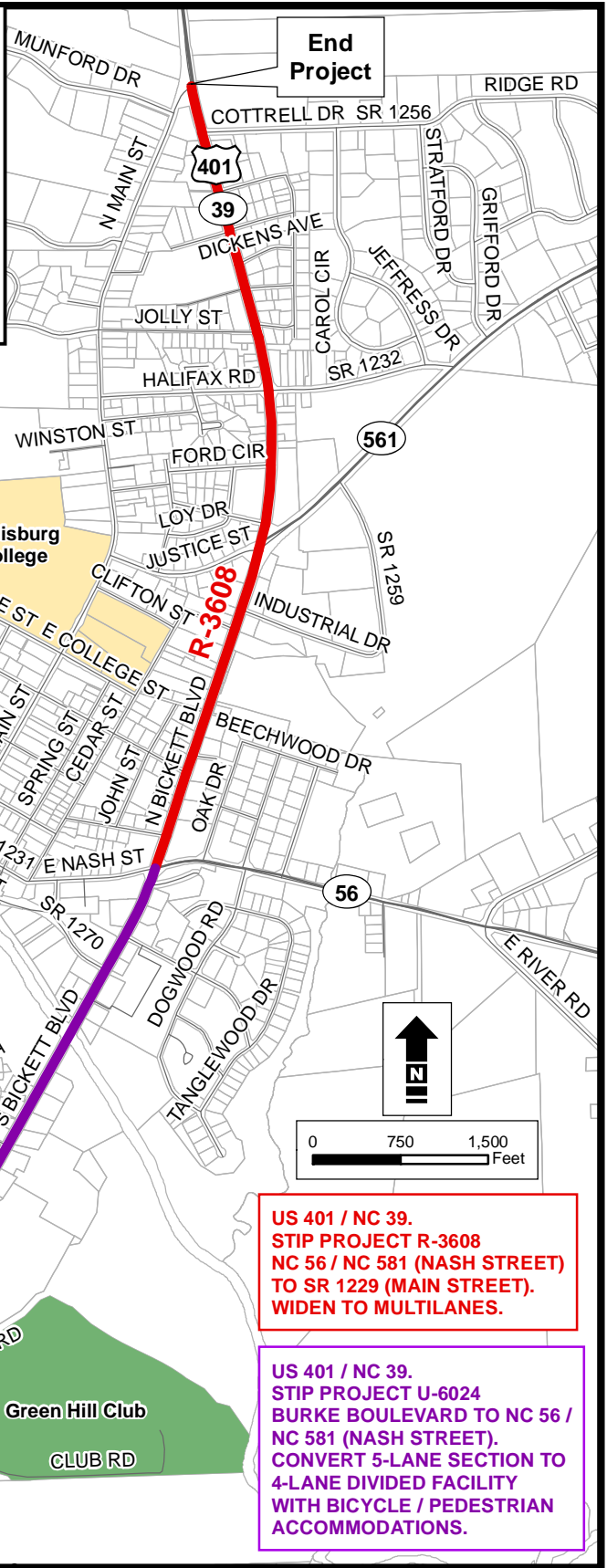
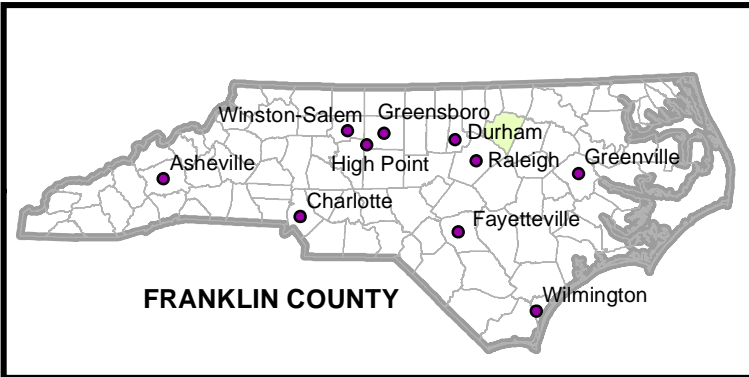
Sources: NCDOT, Wake Co., Durham Co., NC OneMap, HNTB. (HNTB North Carolina, PC, 2018)

0 0.25 0.5 Mile

R-3608 / U-6024

US 401/NC 39 Improvements

R-3608 –from Nash Street to Main Street
U-6024 – from Burke Boulevard to Nash Street
Louisburg, Franklin County



US 401 / NC 39.
STIP PROJECT R-3608
NC 56 / NC 581 (NASH STREET)
TO SR 1229 (MAIN STREET).
WIDEN TO MULTILANES.

US 401 / NC 39.
STIP PROJECT U-6024
BURKE BOULEVARD TO NC 56 /
NC 581 (NASH STREET).
CONVERT 5-LANE SECTION TO
4-LANE DIVIDED FACILITY
WITH BICYCLE / PEDESTRIAN
ACCOMMODATIONS.

R3608_VicinityMap.mxd JNL 06.15.2017

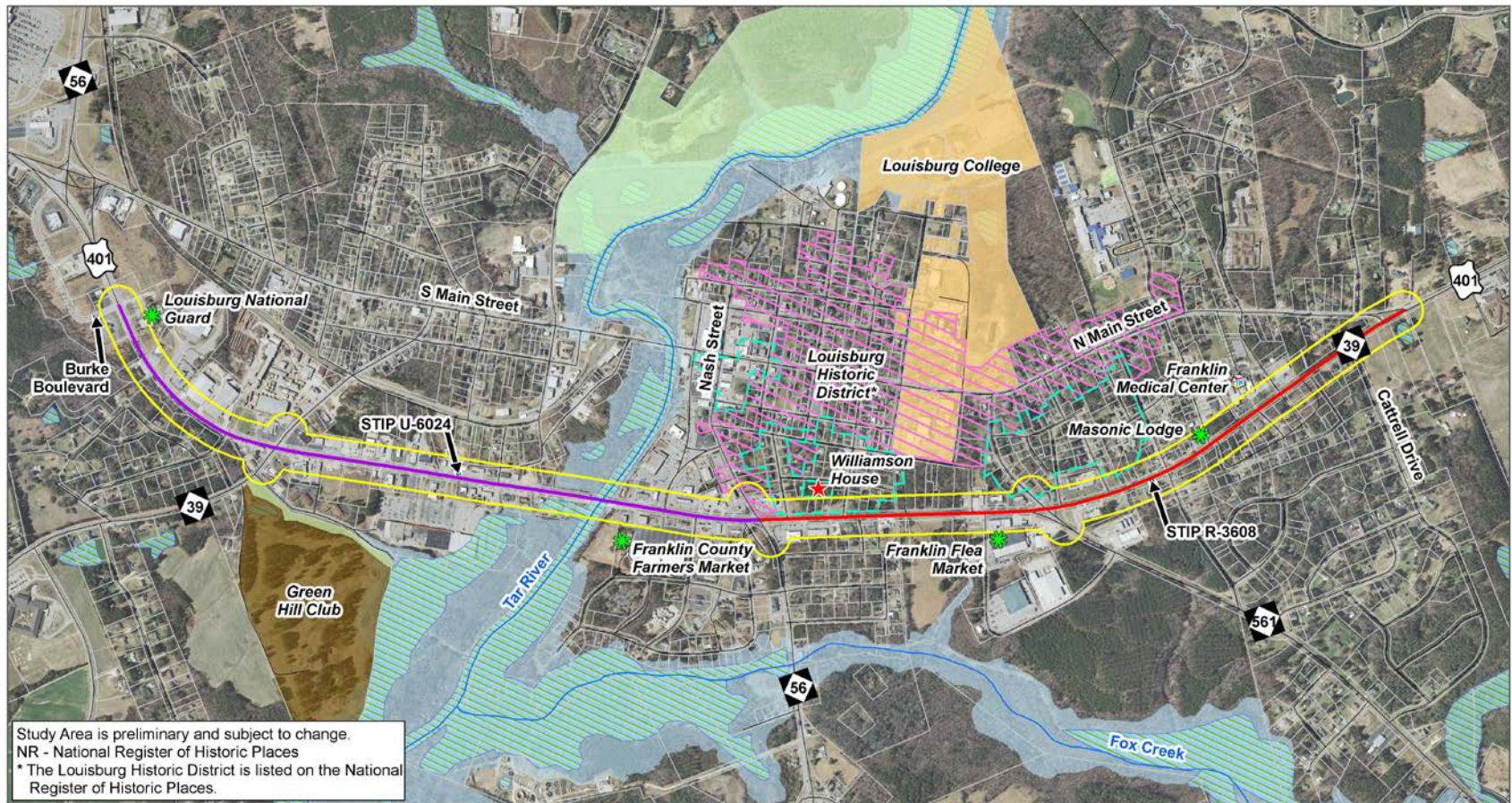


- LEGEND**
- U-6024 Study Limits
 - R-3608 Study Limits
 - College Property
 - Golf Course
 - Parcels
- Source: NCDOT, Franklin County, NCOneMap.

PROJECT VICINITY MAP

US 401 / NC 39.
STIP PROJECT R-3609 and STIP PROJECT U-6024
IN LOUISBURG
FRANKLIN COUNTY

Project Context – Environmental Features Map/Project Study Area



Study Area is preliminary and subject to change.
 NR - National Register of Historic Places
 * The Louisburg Historic District is listed on the National Register of Historic Places.

Scale: 0 to 2,000 Feet

STIP R-3608	Historic Resource	NWI Wetland
STIP U-6024	Hospital	100 yr Floodplain
Road	Notable Facility	Parcel
NR Study List	Study Area	Nat. Heritage Program
Railroad	Historic District	Golf Course
Water Feature	Louisburg College	

ENVIRONMENTAL FEATURES MAP

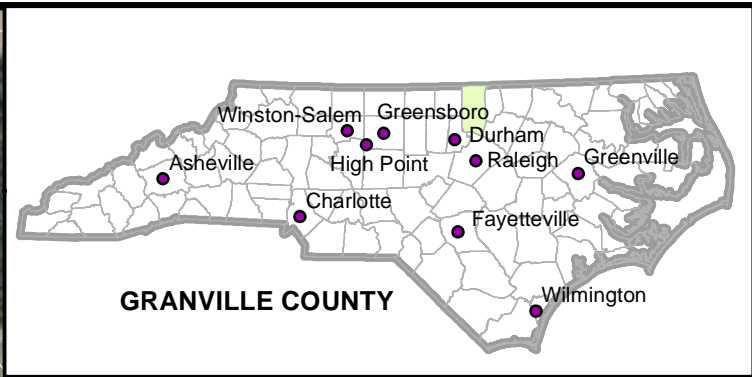
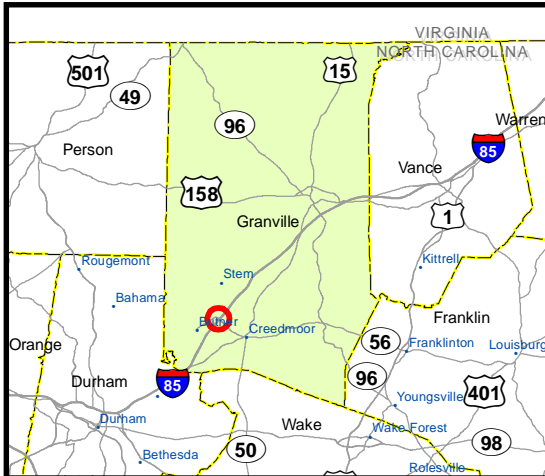
STIP PROJECTS U-6024/R-2608
 US 401/NC 39 IMPROVEMENTS
 FROM BURKE BOULEVARD TO MAIN STREET
 LOUISBURG, FRANKLIN COUNTY

JUNE 2018

U-6020

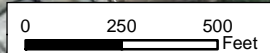
Intersection Realignment

NC 56 (East C Street) and SR 1215 (West Lyon Station Road)
Butner, Granville County



U6020_VicinityMap.mxd JNL 06.13.2017

NC OneMap, NC Center for Geographic Information and Analysis, NC 911 Board

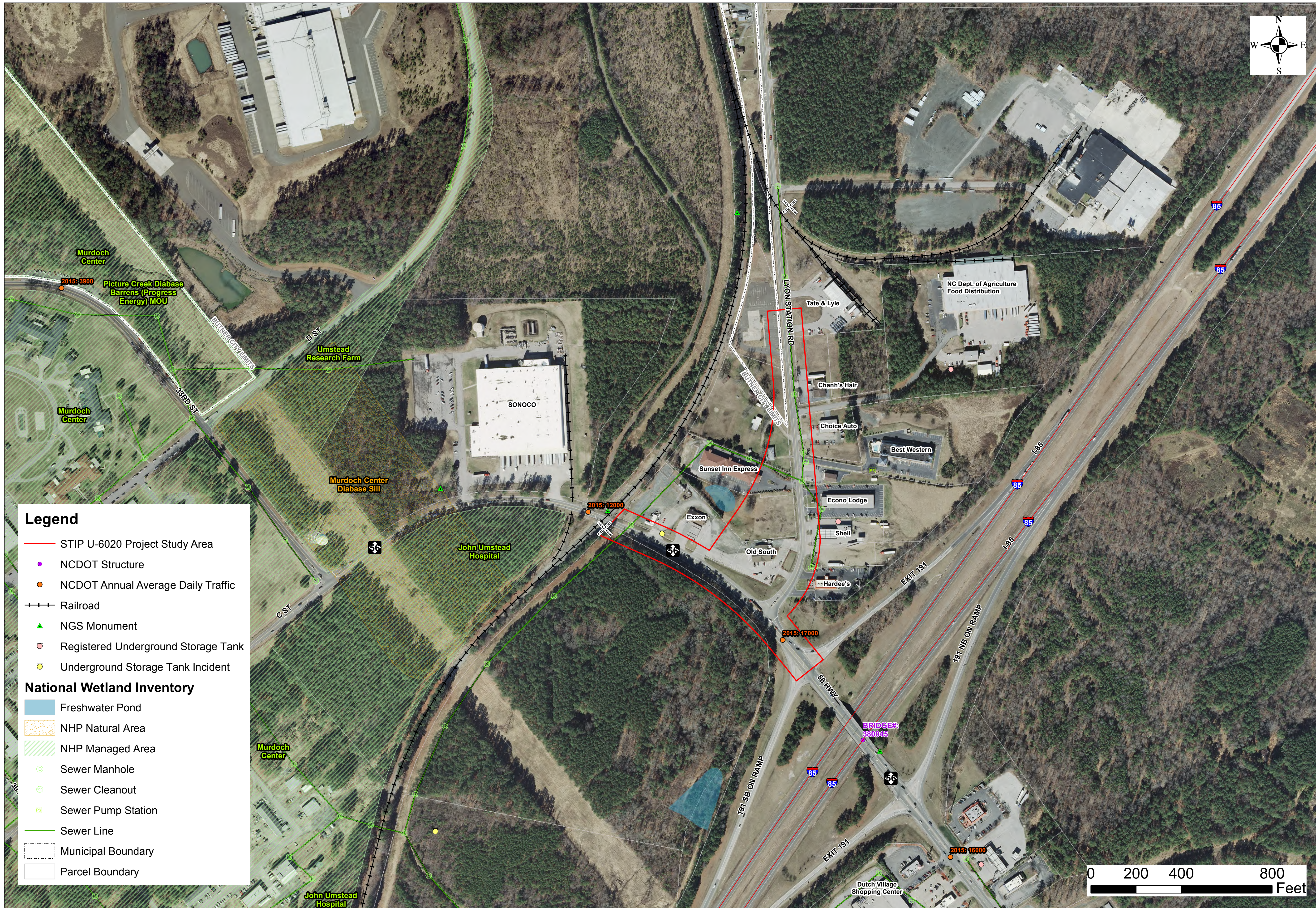


- LEGEND**
-  Project Site
 -  Railroad
 -  Parcels

Source: ESRI, NCDOT, Granville County, NCOneMap.

PROJECT VICINITY MAP

**NC 56 (EAST C STREET)
SR 1215 (WEST LYON STATION ROAD) IN BUTNER
REALIGN INTERSECTION
GRANVILLE COUNTY
STIP PROJECT U-6020**



NORTH CAROLINA
DEPARTMENT OF
TRANSPORTATION

PROJECT
DEVELOPMENT
AND
ENVIRONMENTAL
ANALYSIS
BRANCH

PRELIMINARY
ENVIRONMENTAL
FEATURES
MAP

STIP PROJECT
U-6020

SR 1215
(WEST LYON
STATION RD)
NC 56
REALIGN
INTERSECTION

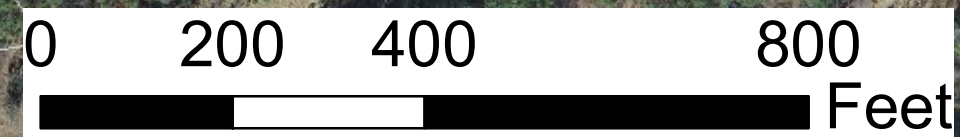
County:
GRANVILLE

Division:
5

WBS:
47165.1.1

Date:
11/20/2017

FIGURE
1

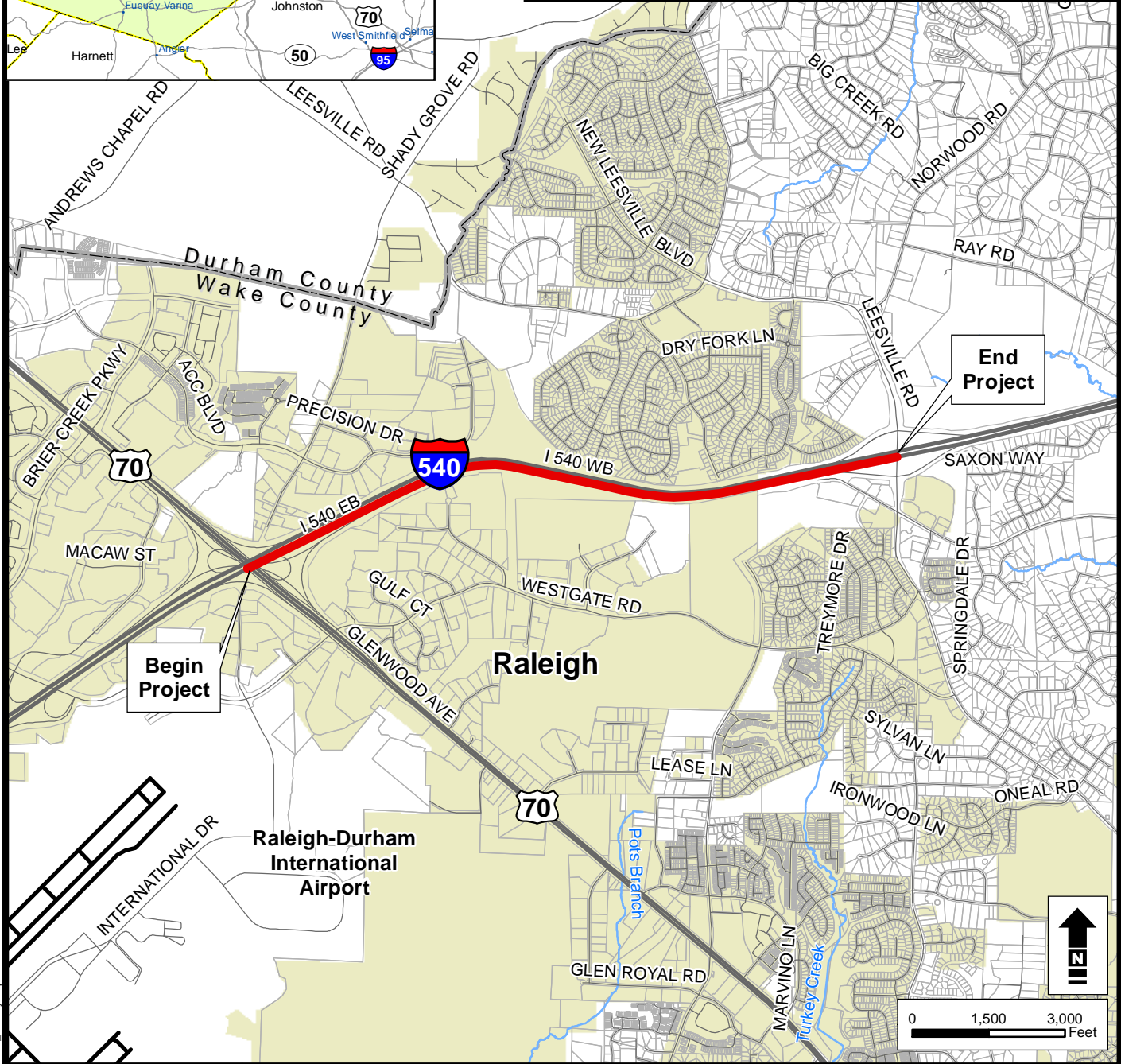
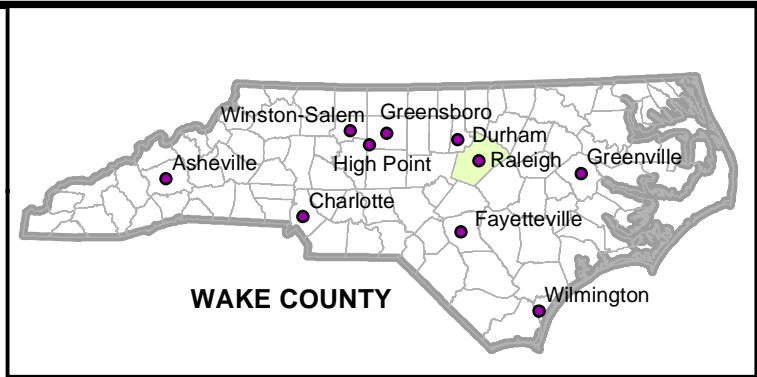
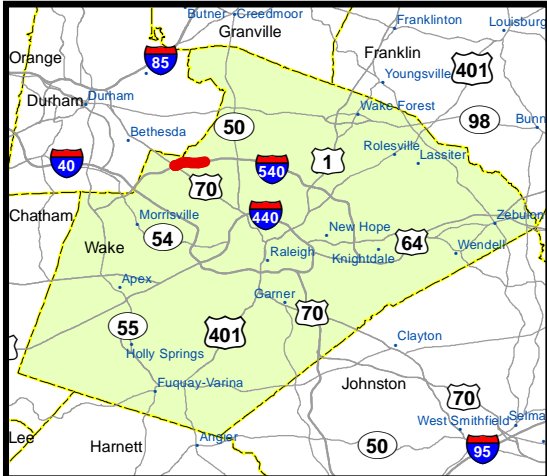


- Legend**
- STIP U-6020 Project Study Area
 - NCDOT Structure
 - NCDOT Annual Average Daily Traffic
 - +—+ Railroad
 - ▲ NGS Monument
 - Registered Underground Storage Tank
 - Underground Storage Tank Incident
- National Wetland Inventory**
- Freshwater Pond
 - NHP Natural Area
 - NHP Managed Area
 - Sewer Manhole
 - Sewer Cleanout
 - Sewer Pump Station
 - Sewer Line
 - Municipal Boundary
 - Parcel Boundary

I-5968

I-540 Eastbound Auxiliary Lane

from US 70 to SR 1829 (Leesville Road)
Raleigh, Wake County



15968_VicinityMap.mxd JUNL 06.13.2017



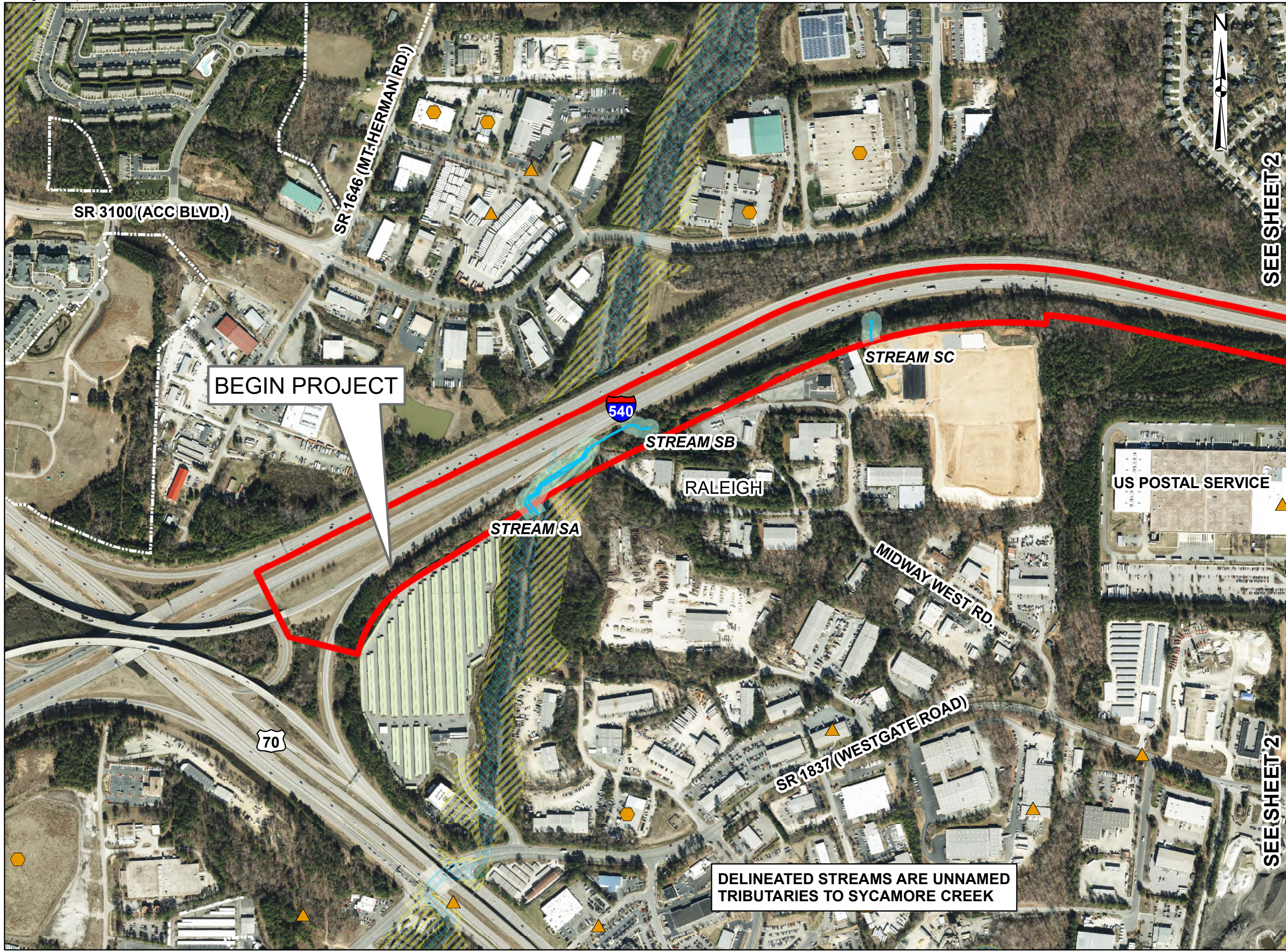
LEGEND

- Study Limits
- Parcels
- County Boundaries
- Raleigh Municipality

Source: ESRI, NCDOT, Wake County, NCOneMap.

PROJECT VICINITY MAP

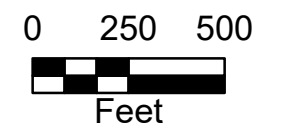
**I-540
US 70 TO SR 1829 (LEESVILLE ROAD) IN RALEIGH
CONSTRUCT EASTBOUND AUXILIARY LANE.
WAKE COUNTY
STIP PROJECT I-5968**



NORTH CAROLINA
DEPARTMENT OF
TRANSPORTATION
DIVISION OF HIGHWAYS

RAMEY KEMP & ASSOCIATES

- LEGEND**
- STUDY AREA
 - ◆ POTENTIAL HAZARDOUS WASTE SITES
 - ▲ UST INCIDENTS
 - HISTORIC PROPERTIES (LISTED OR ELIGIBLE)
 - DELINEATED STREAMS
 - DELINEATED WETLANDS
 - NEUSE BUFFERS
 - WATER SUPPLY WATERSHED
 - 100-YEAR FLOODPLAIN
 - FLOODWAY



I-540
FROM US 70
TO SR 1829 (LEESVILLE ROAD)
IN RALEIGH
WAKE COUNTY
STIP PROJECT I-5968

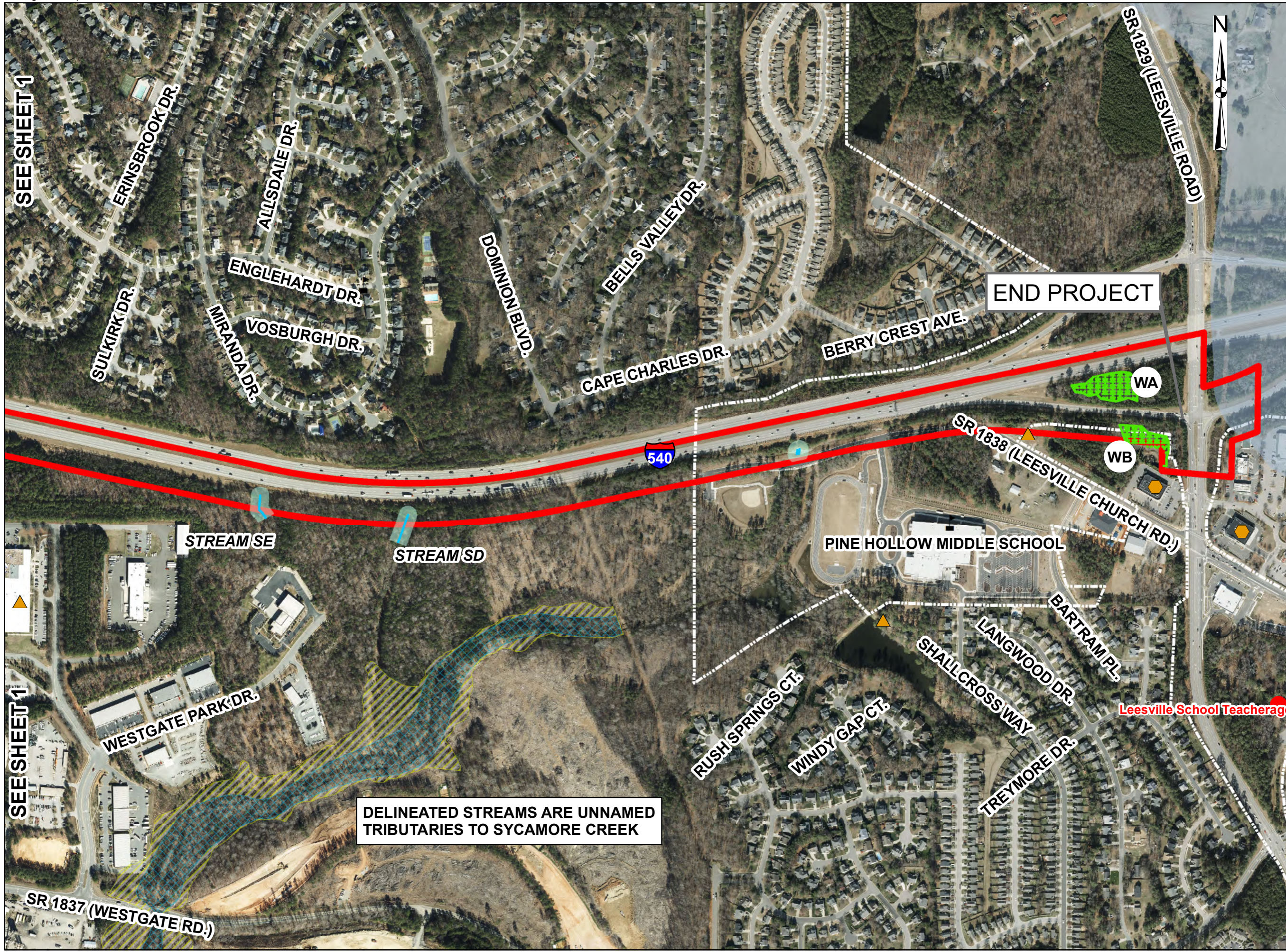
ENVIRONMENTAL FEATURES

BEGIN PROJECT

DELINEATED STREAMS ARE UNNAMED
TRIBUTARIES TO SYCAMORE CREEK

SEE SHEET 2

SEE SHEET 2



DELINEATED STREAMS ARE UNNAMED TRIBUTARIES TO SYCAMORE CREEK

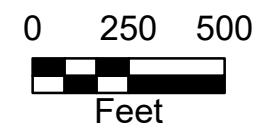


NORTH CAROLINA
DEPARTMENT OF
TRANSPORTATION
DIVISION OF HIGHWAYS

RAMEY KEMP & ASSOCIATES

LEGEND

- STUDY AREA
- POTENTIAL HAZARDOUS WASTE SITES
- ▲ UST INCIDENTS
- HISTORIC PROPERTIES (LISTED OR ELIGIBLE)
- DELINEATED STREAMS
- DELINEATED WETLANDS
- NEUSE BUFFERS
- WATER SUPPLY WATERSHED
- ▨ 100-YEAR FLOODPLAIN
- ▨ FLOODWAY



I-540
FROM US 70
TO SR 1829 (LEESVILLE ROAD)
IN RALEIGH
WAKE COUNTY
STIP PROJECT I-5968

ENVIRONMENTAL FEATURES

U-5969

US 501 / NC 49 Improvements

U-5969A – from south of US 158 to NC 157

U-5969B – from NC 157 to SR 1596 (West Morehead Street)

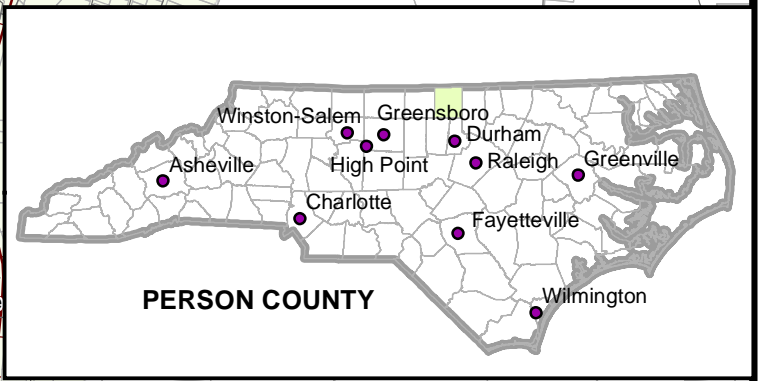
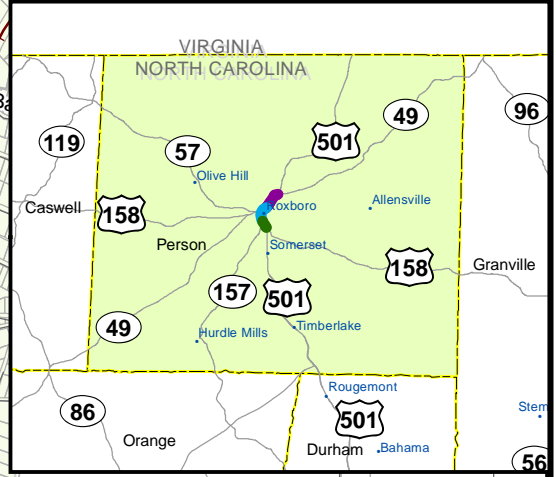
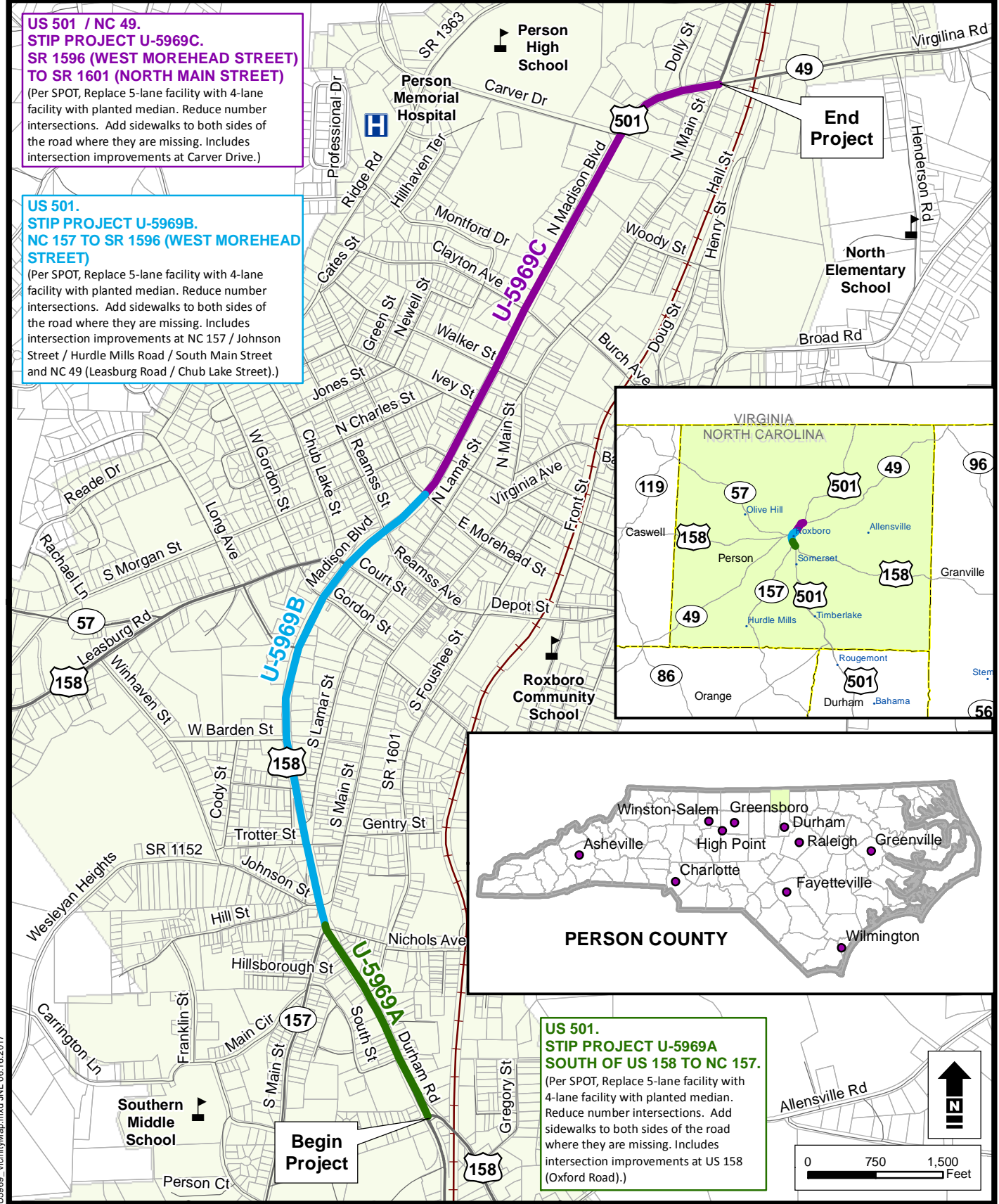
U-5969C – from SR 1596 (West Morehead Street) to SR 1601 (North
Main Street)

Roxboro, Person County

**US 501 / NC 49.
STIP PROJECT U-5969C.
SR 1596 (WEST MOREHEAD STREET)
TO SR 1601 (NORTH MAIN STREET)**
(Per SPOT, Replace 5-lane facility with 4-lane facility with planted median. Reduce number intersections. Add sidewalks to both sides of the road where they are missing. Includes intersection improvements at Carver Drive.)

**US 501.
STIP PROJECT U-5969B.
NC 157 TO SR 1596 (WEST MOREHEAD STREET)**
(Per SPOT, Replace 5-lane facility with 4-lane facility with planted median. Reduce number intersections. Add sidewalks to both sides of the road where they are missing. Includes intersection improvements at NC 157 / Johnson Street / Hurdle Mills Road / South Main Street and NC 49 (Leasburg Road / Chub Lake Street).)

**US 501.
STIP PROJECT U-5969A
SOUTH OF US 158 TO NC 157.**
(Per SPOT, Replace 5-lane facility with 4-lane facility with planted median. Reduce number intersections. Add sidewalks to both sides of the road where they are missing. Includes intersection improvements at US 158 (Oxford Road).)



U5969_VicinityMap.mxd JNL 06.16.2017



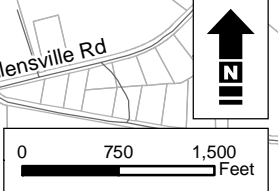
LEGEND

	U-5969A Study Limits		Schools
	U-5969B Study Limits		Hospital
	U-5969C Study Limits		Railroad
	Roxboro Municipality		
	Parcels		

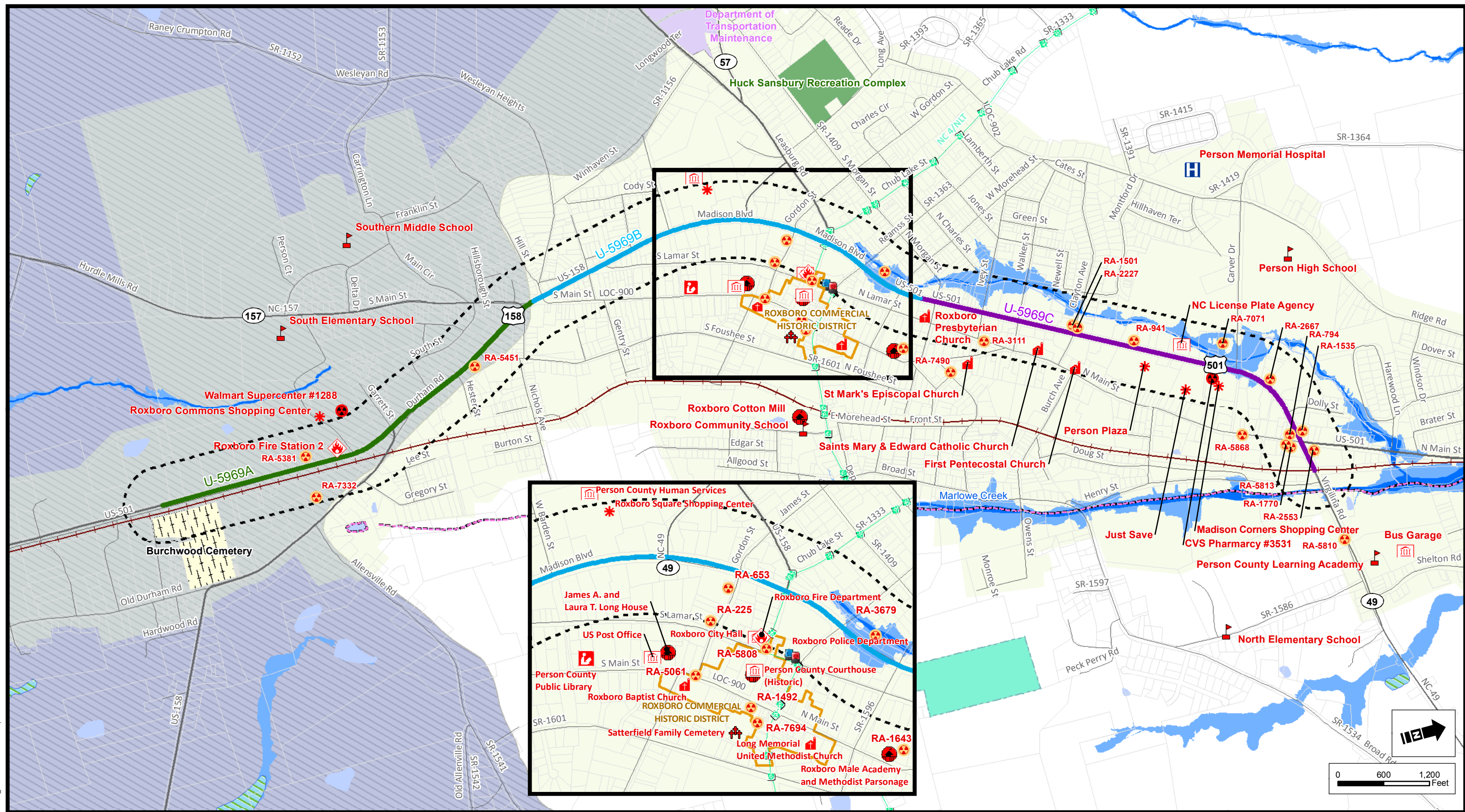
Source: NCDOT, Person County, NCOneMap.

PROJECT VICINITY MAP

**US 501 / NC 49.
STIP PROJECTS U-5969A, U-5969B and U-5969C.
IN ROXBORO
PERSON COUNTY**



U5969_EnviroFeaturesLandscape.mxd JNL 01.30.2018



LEGEND

- | | | | | | | |
|------------------------|---------------------|--------------|-----------------------|----------------------|-----------------------|---------------------------------|
| U-5969A | Government Facility | Schools | Bike Route (NC 4/NLT) | NWI Wetlands | Roxboro Municipality | National Register Historic Site |
| U-5969B | Library | Church | Railroad | Floodway | State Owned Land | Historic District |
| U-5969C | Major Retail Center | Fire Station | 303(d) Streams | 100 Year Floodplain | Parcels | Cemetery |
| Preliminary Study Area | Police Department | Hospital | Streams | Protected Watershed | Burchwood Cemetery | Voluntary Agriculture District |
| | | | Waterbodies | Parks and Open Space | Hazardous Waste Sites | Underground Storage Tanks |

Source: ESRI, NCDOT, Person County, NCOneMap, NCDEQ, EPA and City of Roxboro.

ENVIRONMENTAL FEATURES

**US 501 (Madison Boulevard)
STIP PROJECT U-5969
IN ROXBORO
PERSON COUNTY
FIGURE 2**