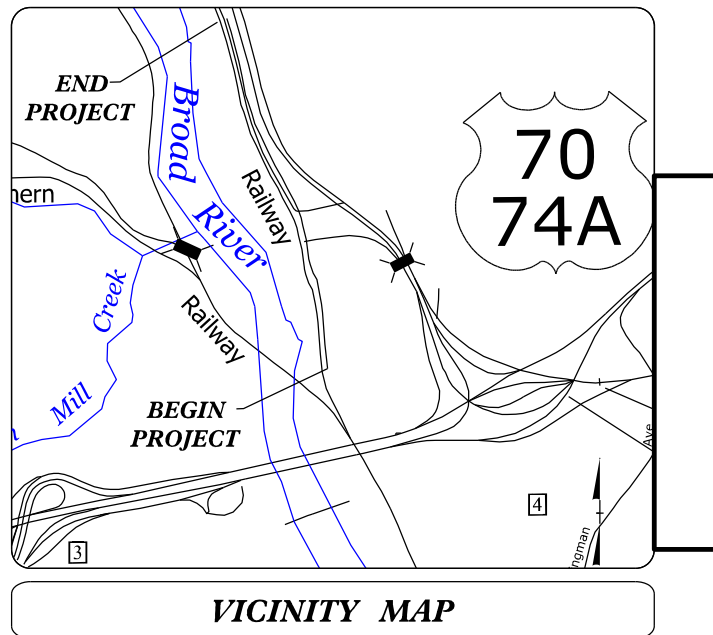


11/23/2022 p:\a\acem-nc-pw-bentley.com\AECOM\_DS2\_NA\_2020\Documents\60646756-1-2513A\900-CAD GIS\910\_CAD\70\_NCDOT\_TIP\Hydraulics\Permits\_Environment\AECOM\I-2513\_B.C.D\I-2513\_D\Drawings\I-2513\09\_08\_2022

**CONTRACT: TIP PROJECT: I-2513D**

See Sheet 1A For Index of Sheets  
See Sheet 1B For Conventional Symbols



STATE OF NORTH CAROLINA  
DIVISION OF HIGHWAYS

**BUNCOMBE COUNTY**

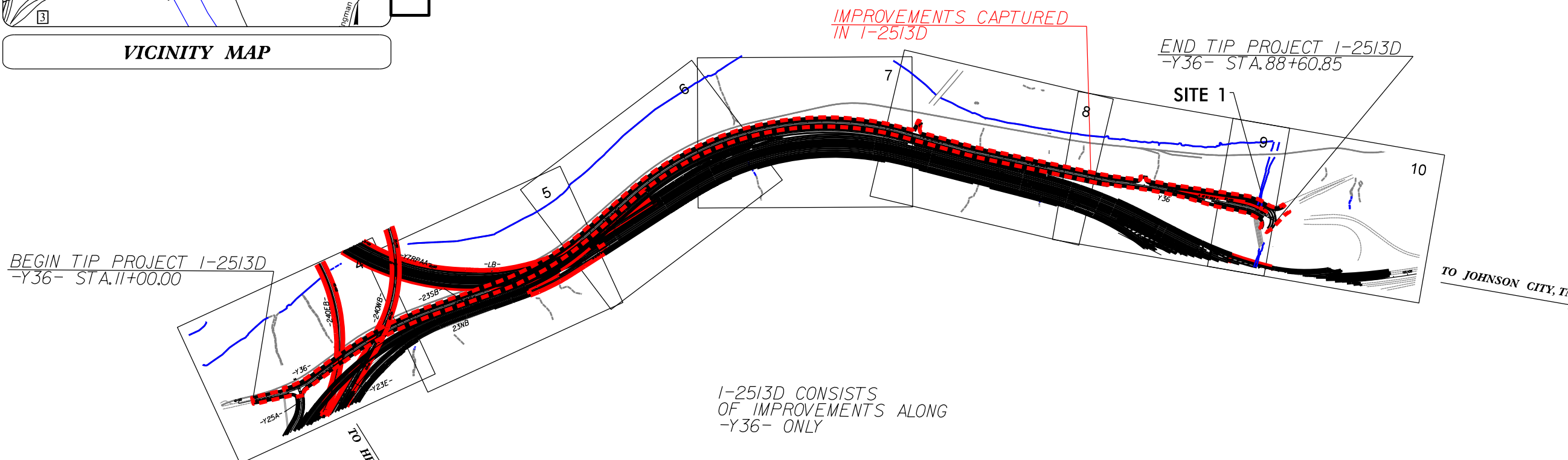
**PRELIMINARY  
WETLAND AND  
SURFACE WATER  
IMPACTS PERMIT**

**NOVEMBER 2022**

**LOCATION: ALONG RIVERSIDE DRIVE FROM HILL STREET TO BROADWAY**

**TYPE OF WORK: GRADING, DRAINAGE, PAVING,  
STRUCTURES, RETAINING WALLS,  
SOUND WALLS, SIGNALS, AND SIGNING**

STATE	STATE PROJECT REFERENCE NO.	SHEET NO.	TOTAL SHEETS
N.C.	I-2513D	1	
STATE PROJ. NO.	F.A. PROJ. NO.	DESCRIPTION	
34165.1.2		P.E.	
34165.1.2		RW	
34165.1.2		UTIL.	
34165.1.2		CONST.	



**THIS IS A CONTROLLED-ACCESS PROJECT WITH ACCESS BEING LIMITED TO INTERCHANGES**

**THIS PROJECT IS LOCATED WITHIN THE CITY LIMITS OF THE CITY OF ASHEVILLE**

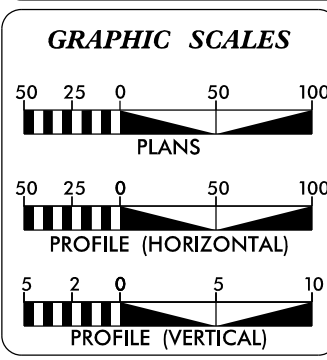
**CLEARING ON THIS PROJECT WILL BE PERFORMED TO THE LIMITS ESTABLISHED BY METHOD III**

**PERMIT DRAWING  
SHEET 1 OF 4**

★ **UPGRADED SIGNAL**

**INCOMPLETE PLANS  
DO NOT USE FOR R/W ACQUISITION**

**DOCUMENT NOT CONSIDERED FINAL  
UNLESS ALL SIGNATURES COMPLETED**



**DESIGN DATA**

ADT 2024 =	NA
ADT 2040 =	101,400
K =	9 %
D =	55 %
T =	10 % *
V =	60 MPH
* TTST =	5% DUAL 5%
FUNC CLASS =	INTERSTATE
STATEWIDE TIER	

**PROJECT LENGTH**

<b>LENGTH ROADWAY TIP PROJECT I-2513D =</b>	<b>1.463 MI</b>
<b>LENGTH STRUCTURE TIP PROJECT I-2513D =</b>	<b>0.00 MI</b>
<b>TOTAL LENGTH TIP PROJECT I-2513D =</b>	<b>1.463 MI</b>

**AECOM**  
NC FIRM LICENSE No: F-0342  
5438 Wade Park Blvd., Suite 200  
Raleigh, NC 27607  
(919) 854-6200 - (919) 854-6259(FAX)

2018 STANDARD SPECIFICATIONS

**RIGHT OF WAY DATE:**  
OCTOBER, 2023

**LETTING DATE:**  
OCTOBER, 2023

PROJECT ENGINEER

PROJECT DESIGN ENGINEER

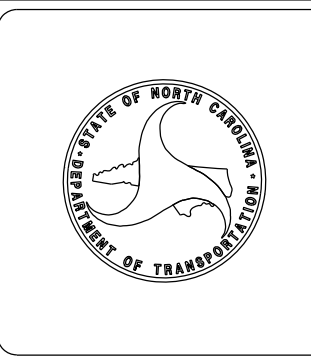
**KEVIN E. MOORE, P.E.**  
NGDOT CONTACT

**HYDRAULICS ENGINEER**

SIGNATURE: \_\_\_\_\_ P.E.

**ROADWAY DESIGN ENGINEER**

SIGNATURE: \_\_\_\_\_ P.E.

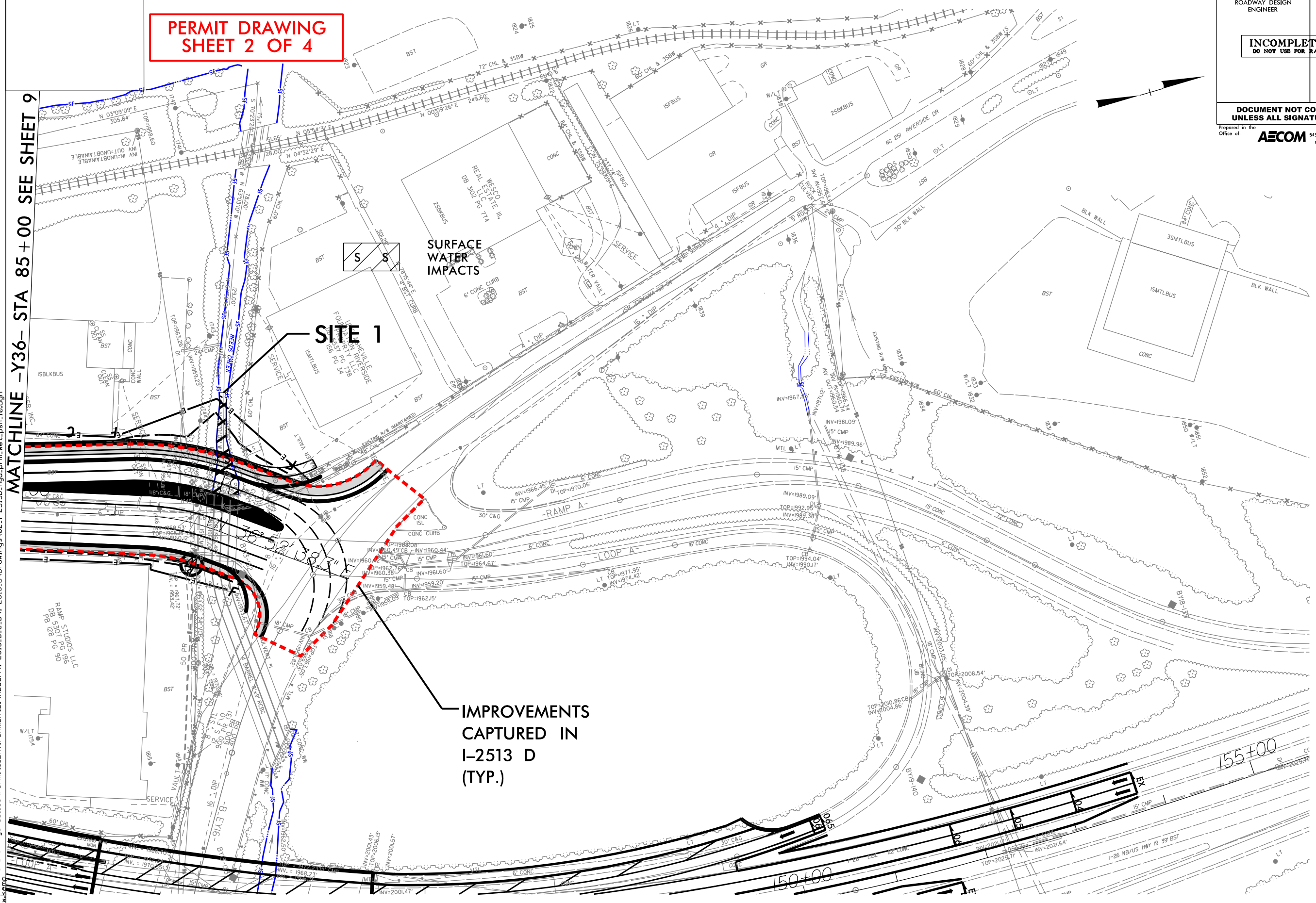


6/2/2019  
D:\GIS\910\2019\2022\CDOT - TIP\Hydraulics\Permits.Environmental\AECOM\I-2513.D\Drawings\02\_I-2513D\_Hyd.prm.wet.psh\_10.dgn  
matchkenn

REVISIONS

**PERMIT DRAWING  
SHEET 2 OF 4**

**MATCHLINE -Y36- STA 85+00 SEE SHEET 9**



PROJECT REFERENCE NO.	SHEET NO.
I-2513D	10
RW SHEET NO.	
ROADWAY DESIGN ENGINEER	HYDRAULICS ENGINEER
<b>INCOMPLETE PLANS</b> DO NOT USE FOR R/W ACQUISITION	
<b>DOCUMENT NOT CONSIDERED FINAL</b> UNLESS ALL SIGNATURES COMPLETED	
Prepared in the Office of:	AECOM NC FIRM LICENSE No F-0342 5438 Wade Park Boulevard, Suite 200 Raleigh, NC 27607 (919) 854-6200 • (919) 854-6259 (fax)



6/2/2019  
GIS\910\_CAD\2019\TIP\Hydraulics\Permits\Environmental\AECOM\1-2513.D\Drawings\03.1-2513D\_Hyd\_prm\_wet\_psh\_10\_con.dgn  
12/27/2020  
CAD  
10  
matthew.kemp

REVISIONS

PROJECT REFERENCE NO.	SHEET NO.
1-2513D	10
RW SHEET NO.	
ROADWAY DESIGN ENGINEER	HYDRAULICS ENGINEER
<b>INCOMPLETE PLANS</b> DO NOT USE FOR R/W ACQUISITION	
<b>DOCUMENT NOT CONSIDERED FINAL</b> UNLESS ALL SIGNATURES COMPLETED	
Prepared in the Office of:	<b>AECOM</b> NC FIRM LICENSE No. F-0342 5438 Wade Park Boulevard, Suite 200 Raleigh, NC 27607 (919) 854-6200 • (919) 854-6259 (fax)

**PERMIT DRAWING SHEET 3 OF 4**

MATCHLINE -Y36- STA 85+00 SEE SHEET 9

