



STATE OF NORTH CAROLINA
DEPARTMENT OF TRANSPORTATION

PAT L. MCCRORY
GOVERNOR

ANTHONY J. TATA
SECRETARY

May 30, 2013

US Army Corps of Engineers
Regulatory Field Office
2407 West 5th Street
Washington, NC 27889

Attention: Mr. Thomas Steffens
NCDOT Coordinator

Subject: **Request for Modification to the Individual Section 404 Permit, Section 401 Water Quality Certification and Neuse Riparian Buffer Authorization** for the construction of the US 70 Bypass from east of SR 1556 (Wayne Memorial Drive) to east of SR 1323 (Promise Land Road) in Wayne and Lenoir Counties. State Project No. 34461.3.8. TIP No. R-2554BB&C.

Reference: Section 404 Individual Permit issued July 21, 2008 (SAW 2008-00252) for R-2554
Section 401 Water Quality Certification and Neuse Riparian Buffer Authorization issued May 16, 2008 (20080570) for R-2554
Section 404 Individual Permit Modification issued March 13, 2012 for R-2554A
Section 401 Water Quality Certification and Neuse Riparian Buffer Authorization Modification issued March 8, 2012 for R-2554A
Section 404 Individual Permit Modification issued January 29, 2013 for R-2554BB&C
Section 401 Water Quality Certification and Neuse Riparian Buffer Authorization Modification issued December 27, 2012 for R-2554BB&C

Dear Sir:

The North Carolina Department of Transportation (NCDOT) requests a modification to the existing Individual Section 404 Permit, Section 401 Water Quality Certification and Neuse Riparian Buffer Authorization for the R-2554 BB and C project. This modification is being requested due to clarifications or revisions needed on the previous modifications dated December 27, 2012 and January 29, 2013, a study area change between the planning phase and final design, and a topographic error on plan sheets 47 and 47A. Enclosed with this request are updated permit drawings, an updated impact summary sheet, and updated borrow site mapping.

Impacts to Waters of the U.S.

A jurisdictional wetland located at approximately Sta. 10+30 to 14+30 along SR17REV (Beston Road) was inadvertently omitted due to the change in study area. This area was not included in the Natural Resources Technical Report or wetland file initially used to create the plan sheets for the project as it was outside the study area. This wetland was discovered during permitted waterline relocations which are independent of the R-2554 project. The impacts for the service road which is within this additional study area, include 0.50 acre of fill in wetlands. Additionally there will be 0.11 acre of hand clearing in an area that was previously impacted by the utility relocations. This new area is being referred to on the permit drawings and summary impact table as Site 15C.

In addition to the study area change described above, a break in the topographic mapping caused an error on plan sheets 47 and 47A at Permit Site 12C. This was noticed while surveying the slope stake limits and the error results in the slope stake being approximately 12' beyond what was permitted. Permit Site 12C impacts will change slightly, adding 0.04 acre of additional fill while the amount of mechanized clearing remains unchanged.

The project's permit impact summary table has been updated to include these impacts, as have the permit drawings. The total amount of fill for R-2554 BB&C is 17.36 acres and 1.37 acres of hand clearing.

Neuse Riparian Buffers

The Gray Borrow Site was originally planned as an expansion of the existing landowner's pond which would have included Neuse Riparian Buffer impacts; however, the land owner was not interested in the conservation easement after further evaluation. The Gray Borrow Site will now be constructed as a separate pond and will not impact Neuse Riparian Buffers, and therefore not necessitate buffer mitigation as required in the Neuse Buffer Authorization. Revised graphics for the site are attached.

Mitigation

The October 31, 2012 BB&C modification request made note of three stream relocations at sites 4BB, 9BB, and 3C, which were also mentioned during the 4C meeting on September 20, 2012. The total stream relocation impacts were 1,044 linear feet which were included in the tables detailing the impacts. NCDOT requests these be removed from requiring mitigation as they are relocations of currently channelized streams with vertical side slopes and will be replaced with channels having stable 3:1 or better side slopes. This would result in a reduction of the required mitigation amount by 1,044 linear feet and thus 6,735 linear feet of required mitigation, prior to inclusion of the onsite mitigation, rather than the 7,779 linear feet.

The table labeled "Section BB&C Onsite Stream Restoration" on page 1 of the 401 Water Quality Certification included a note at the bottom of the table which appears to be incorrect. This note should read as follows: "*6,735 ft stream mitigation required minus 2,360 ft onsite = 4,375 linear feet required."

Compensatory mitigation for the remaining 4,375 linear feet of stream impacts will be debited from the Claridge Nursery Mitigation Site. In the event that mitigation credits remain per the as-


built reports once construction of R-2554 is complete, they will be placed on the NCDOT Debit Ledger for use on future projects.

There is 0.56 acre of onsite wetland mitigation available which will cover the additional 0.54 acre of impacts for Sites 15C and 12C, leaving 0.02 acre.

Thank you for your assistance with this project. If you have any questions or need additional information, please contact Chris Manley at cdmanley@ncdot.gov or (919) 707-6135. A copy of this permit modification request will be posted on the DOT website at: <http://www.ncdot.org/doh/preconstruct/pe/neu/permit.html>.

Sincerely,



 Gregory J. Thorpe, Ph.D., Manager
Project Development & Environmental Analysis Unit

cc:

NCDOT Permit Application Standard Distribution List

WETLAND PERMIT IMPACT SUMMARY

Site No.	Station (From/To)	Structure Size / Type	WETLAND IMPACTS					SURFACE WATER IMPACTS					
			Permanent Fill In Wetlands (ac)	Temp. Fill In Wetlands (ac)	Excavation in Wetlands (ac)	Mechanized Clearing in Wetlands (ac)	Hand Clearing in Wetlands (ac)	Permanent SW impacts (ac)	Temp. SW impacts (ac)	Existing Channel Impacts Permanent (ft)	Existing Channel Impacts Temp. (ft)	Natural Stream Design (ft)	
1 BB	153+00/157+34-LREV-	Bridge	0.07	*<0.01									
3 BB	244+33/255+95 -LREV-	7' X 7' Culverts						0.14	0.02	1197	176		
4 BB	296+26 / 302+83 -LREV-	(2) 10' X 10' Culvert						0.12	0.01	**965	45		
6 BB	335+74 / 337+19 -LREV-	Roadway Fill	0.14			0.02							
7 BB	336+68 / 340+55 -LREV-	Roadway Fill	0.23			0.07							
9 BB	11+00 -SR13REV- / 54+00 -SR12-	Roadway Fill						0.12	<0.01	**1763	10	1322	
10 BB	37+29 / 38+45 -SR13REV-	30" RCP	0.02			0.03		<0.01	<0.01	14	16		
		Bank Stabilization						0.01		26			
12 BB	28+17 / 29+18 -SR11-	54" RCP						0.01		94			
		Bank Stabilization						<0.01		41			
13 BB	26+58 / 27+15 -Y15-	48" RCP						<0.01	<0.01	75	9		
		Bank Stabilization						<0.01		13			
1C	405+27/416+09 -LREV-	9' X 9' / 10' X 8' Culverts						0.22	0.02	956	100		
		Fill in Pond						0.15					
2C	16+16/16+97 -Y19RPBREV-	Fill in Pond						0.06					
3C	413+17/416+76 -LREV-	Roadway Fill						0.03	<0.01	**712	30		
		Fill in Pond						0.07					
		Bank Stabilization						<0.01		12			
4C	469+76/481+68 -LREV-	Roadway Fill	0.39					0.05	<0.01	489	4		
		Mitigation							0.03		89	1038	
		Work Bridge							*<0.01		*58		
5C	505+27 / 506+07 -LREV-	6' X 6' Culvert						0.03	0.01	273	29		
6C	526+80 / 534+93 -LREV-	Roadway Fill	1.72			0.12							
7C	547+25 / 557+29 -LREV-	Roadway Fill	2.80			0.24							
8C	597+09 / 599+86 -LREV-	Roadway Fill	0.16			0.06							
9C	604+62 / 611+75 -LREV-	Roadway Fill	2.01			0.25							
		Pond						0.29					
10C	641+00 / 644+35 -LREV-	7' X 7' Culvert	1.03		0.03	0.19		0.01	<0.01	288	37		
11C	698+77 / 704+07 -LREV-	11' X 7' Culvert	1.48		0.02	0.22		0.12	0.01	346	40		
12C	12+51 / 34+02 -FLYREV-	Roadway Fill	4.03			0.51		0.04	<0.01	394	10		
		Bank Stabilization						<0.01		19			
13C	754+57/773+80 -LREV-	Roadway Fill	0.73			0.14							
14C	29+09 / 34+18 -Y26REV-	11' X 7' Culvert	2.05		0.07	0.20		0.08	0.02	365	81		
15C	10+30 / 14+30 -SR17REV-	Roadway Fill	0.50				0.11						
TOTALS:			17.36	<0.01	0.12	2.05	1.37	1.55	0.12	8042	734	2360	

*Temporary impacts are due to temporary work bridge. Work bridge spans are a minimum of 20' long with five 1' X 1' H-piles per bent.

** Selected Permit Sites that have stream relocations.

- Site 4BB has 600 linear feet of stream relocation.
- Site 9BB has 199 linear feet of stream relocation.
- Site 3C has 245 linear feet of stream relocation.
- Total stream relocation = 1,044 linear feet

NC DEPARTMENT OF TRANSPORTATION
DIVISION OF HIGHWAYS

WAYNE/LENOIR COUNTIES
WBS - 34461.3.8 (R-2554BB&C)

SHEET **10** OF **135** REVISED 05/17/13

TIP PROJECT: R-2554BB&C

CONTRACT: C202771

PLOT DRIVER: NCDOT_color_eng_100.plt
 USER: cmvrs
 DATE: 5/17/2013
 FILE: HDR_Engineering_Dept_Marketing\DOTs_Regional\Local_Agencies\NR-2554BB&C_Hydrolics\PERMITS_Envir\onment\cd\Dr_ow\ngs\NR2554BB&C_HYD_PRM_TSH.dgn

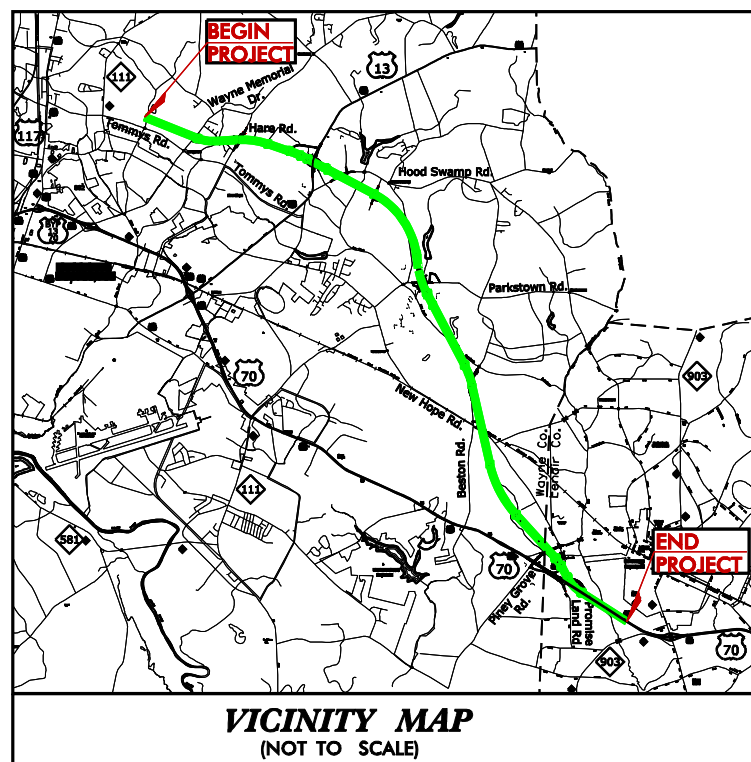
STATE OF NORTH CAROLINA
DIVISION OF HIGHWAYS

WAYNE-LENOIR COUNTIES

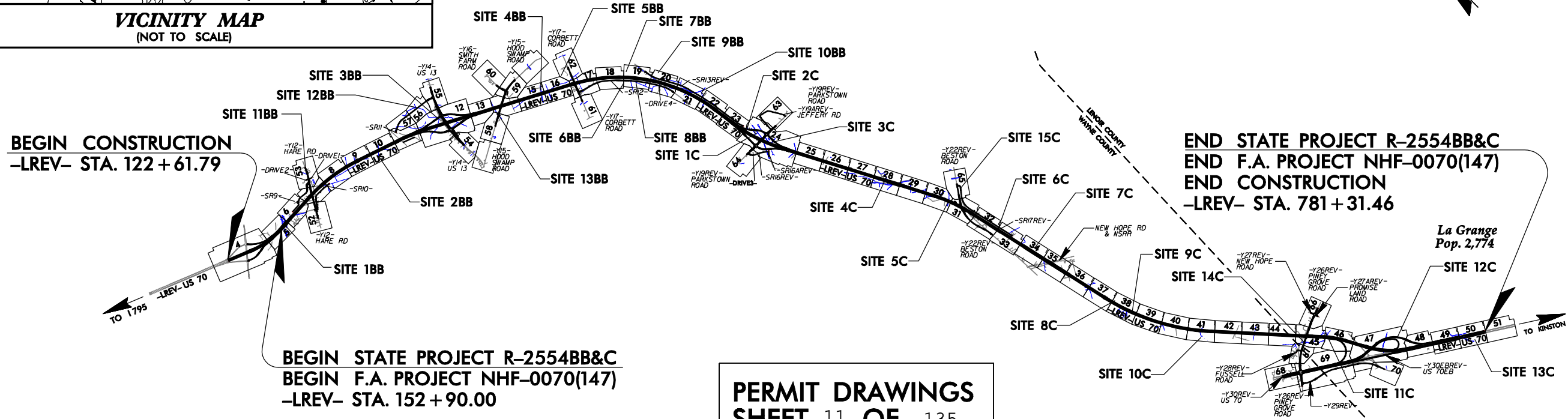
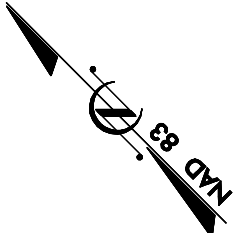
LOCATION: US 70 (GOLDSBORO BYPASS) FROM EAST OF SR 1556 (WAYNE MEMORIAL DRIVE) TO EAST OF SR 1323 (PROMISE LAND ROAD)

TYPE OF WORK: DESIGN-BUILD AS SPECIFIED IN THE SCOPE OF WORK CONTAINED IN THE REQUEST FOR PROPOSALS

STATE	STATE PROJECT REFERENCE NO.	SHEET NO.	TOTAL SHEETS
N.C.	R-2554BB&C	1	
STATE PROJ. NO.	F.A. PROJ. NO.	DESCRIPTION	
34461.3.8	NHF-0070(147)	CONSTRUCTION	



**R-2554BB&C
WETLAND SITE MAP
REVISED: 05-17-2013**



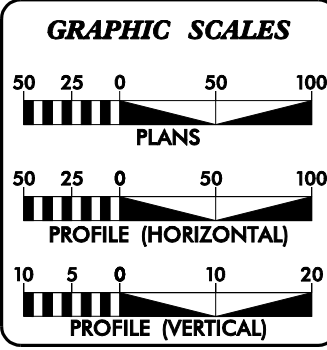
THIS IS A CONTROLLED-ACCESS PROJECT WITH ACCESS BEING LIMITED TO INTERCHANGES. CLEARING ON THIS PROJECT SHALL BE PERFORMED TO THE LIMITS ESTABLISHED BY METHOD III.

PROJECT PREPARED BY:

HDR Engineering, Inc. of the Carolinas
3733 National Drive, Suite 207 Raleigh, N.C. 27612
N.C.B.E.L.S. License Number: F-0116

BARNHILL CONTRACTING COMPANY

PRELIMINARY PLANS
DO NOT USE FOR CONSTRUCTION
INCOMPLETE PLANS
DO NOT USE FOR R/W ACQUISITION



DESIGN DATA

ADT 2011 =	21400
ADT 2035 =	44500
DHV =	8 %
D =	55 %
T =	11 % *
V =	75 MPH
FUNCTIONAL CLASSIFICATION: INTERSTATE	
* TTST = 7%	DUAL = 4%

PROJECT LENGTH

LENGTH ROADWAY TIP PROJECT R-2554BB&C	=	11.646 MILES
LENGTH STRUCTURE TIP PROJECT R-2554BB&C	=	0.256 MILES
TOTAL LENGTH TIP PROJECT R-2554BB&C	=	11.902 MILES
BRIDGE LENGTH BASED ON CENTERLINE PROJECTION STATION		

Prepared for the Office of:
DIVISION OF HIGHWAYS
1000 Birch Ridge Dr., Raleigh NC, 27610

2006 STANDARD SPECIFICATIONS

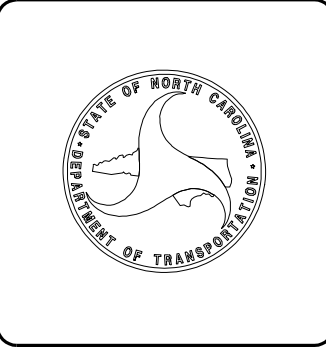
RIGHT OF WAY DATE: JANUARY 25, 2012 (R-2554BB) DECEMBER 23, 2002 (R-2554C)	PAUL A. MEEHAN, P.E. PROJECT ENGINEER
LETTING DATE: JANUARY 25, 2012	CALVIN W. MOODY, III, P.E. PROJECT DESIGN ENGINEER

HYDRAULICS ENGINEER

SIGNATURE: P.E.

ROADWAY DESIGN ENGINEER

SIGNATURE: P.E.



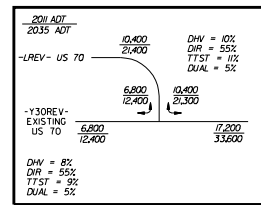
REVISIONS

RPC-28 (04/11/13): UPDATED SLOPE STAKES AT -LREV- 727+00 TO 728+50 (S) FOR UPDATED 12' SHOULDER.
IMPACTS UPDATED 5-17-13

DO NOT PLACE ROCK IN BED OF JURISDICTIONAL STREAMS.

SEE SHEET NO. 94,95 FOR -LREV- PROFILE.
 SEE SHEET NO. 95 FOR -LREV_EB- PROFILE.
 SEE SHEET NO. 97 FOR -LREV_WB- PROFILE.
 SEE SHEET NO. 122,123 FOR -Y29REV- PROFILE.
 SEE SHEET NO. 128,129 FOR -Y30REV- PROFILE.
 SEE SHEET NO. 130,131 FOR -FLYREV- PROFILE.
 SEE SHEET NO. 132 FOR -RPA- PROFILE.
 SEE SHEET NO. 133 FOR -LPAREV- PROFILE.
 SEE SHEET NO. 2-X FOR BRIDGE SKETCH.

☒ PAVEMENT TO BE OBLITERATED.



LEGEND

[Symbol]	DENOTES FILL IN WETLAND
[Symbol]	DENOTES MECHANIZED
[Symbol]	DENOTES IMPACTS IN SURFACE WATER
[Symbol]	DENOTES TEMPORARY IMPACTS IN SURFACE WATER

PROJECT NUMBER: 12-25548BAC

SHEET NO. 47

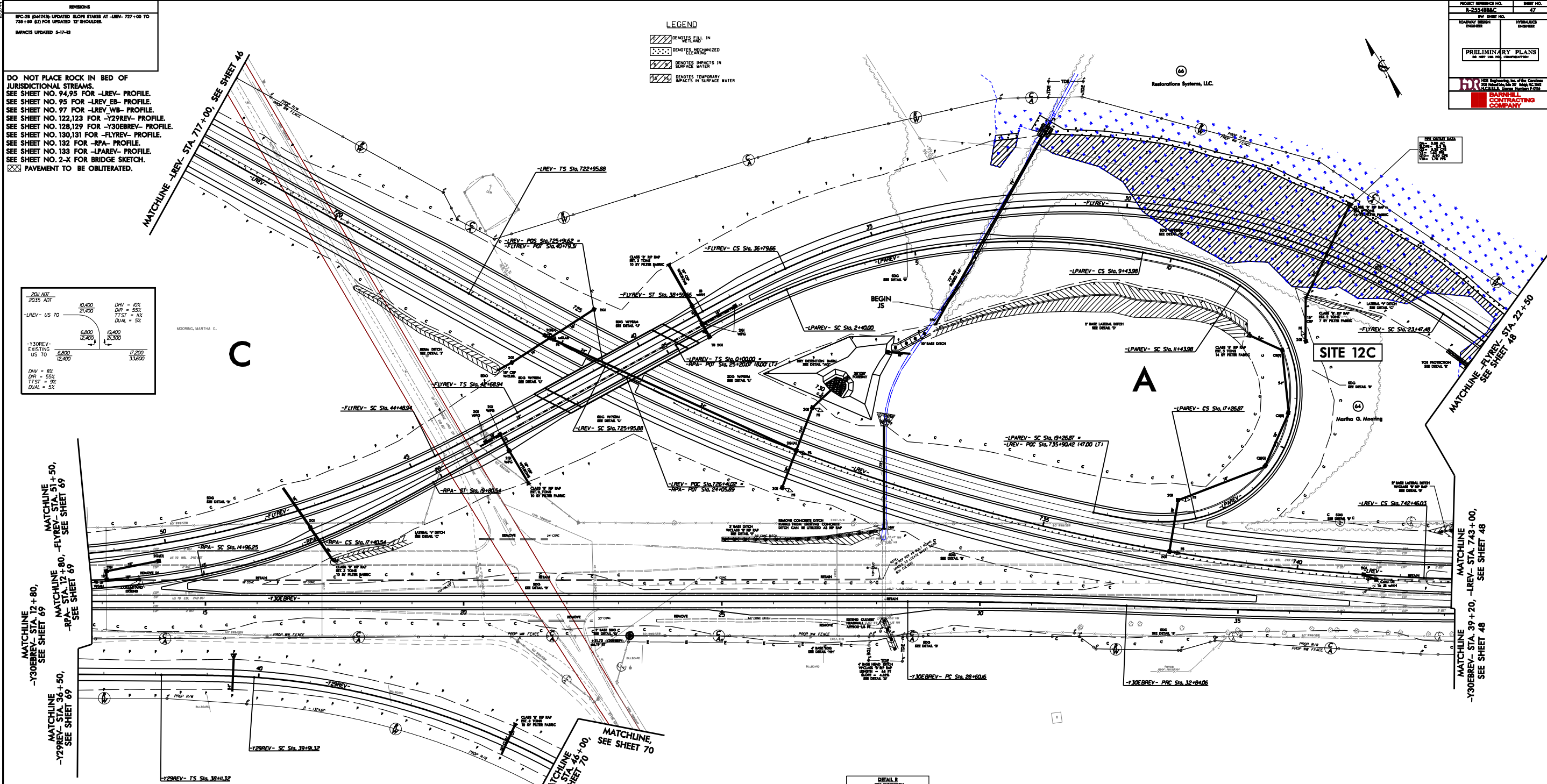
DATE: 11/14/13

BY: JTB

SCALE: AS SHOWN

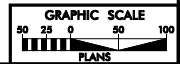
PRELIMINARY PLANS

CONTRACTOR: BARNHILL CONTRACTING COMPANY



PLOT: B711EN, 12021, 12022, 12023, 12024, 12025, 12026, 12027, 12028, 12029, 12030, 12031, 12032, 12033, 12034, 12035, 12036, 12037, 12038, 12039, 12040, 12041, 12042, 12043, 12044, 12045, 12046, 12047, 12048, 12049, 12050, 12051, 12052, 12053, 12054, 12055, 12056, 12057, 12058, 12059, 12060, 12061, 12062, 12063, 12064, 12065, 12066, 12067, 12068, 12069, 12070, 12071, 12072, 12073, 12074, 12075, 12076, 12077, 12078, 12079, 12080, 12081, 12082, 12083, 12084, 12085, 12086, 12087, 12088, 12089, 12090, 12091, 12092, 12093, 12094, 12095, 12096, 12097, 12098, 12099, 12100

PERMIT DRAWINGS
 SHEET 107 OF 135



LOCATION



TWP. NO.

COUNTY



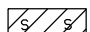
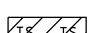
DRAWN BY

CHECKED BY

DATE

PROJECT REFERENCE NO. R-2554BB&C	SHEET NO. 47A
RW SHEET NO.	
ROADWAY DESIGN ENGINEER	HYDRAULICS ENGINEER
INCOMPLETE PLANS DO NOT USE FOR R/W ACQUISITION	
PRELIMINARY PLANS DO NOT USE FOR CONSTRUCTION	
 HDR Engineering, Inc. of the Carolinas 3733 National Drive, Suite 207 Raleigh, N.C. 27612 N.C.B.E.L.S. License Number: F-0116	
 BARNHILL CONTRACTING COMPANY	

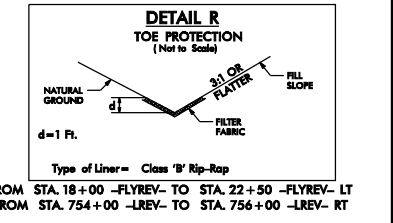
LEGEND

-  DENOTES FILL IN WETLAND
-  DENOTES MECHANIZED CLEARING
-  DENOTES IMPACTS IN SURFACE WATER
-  DENOTES TEMPORARY IMPACTS IN SURFACE WATER



IMPACTS UPDATED 5-17-13

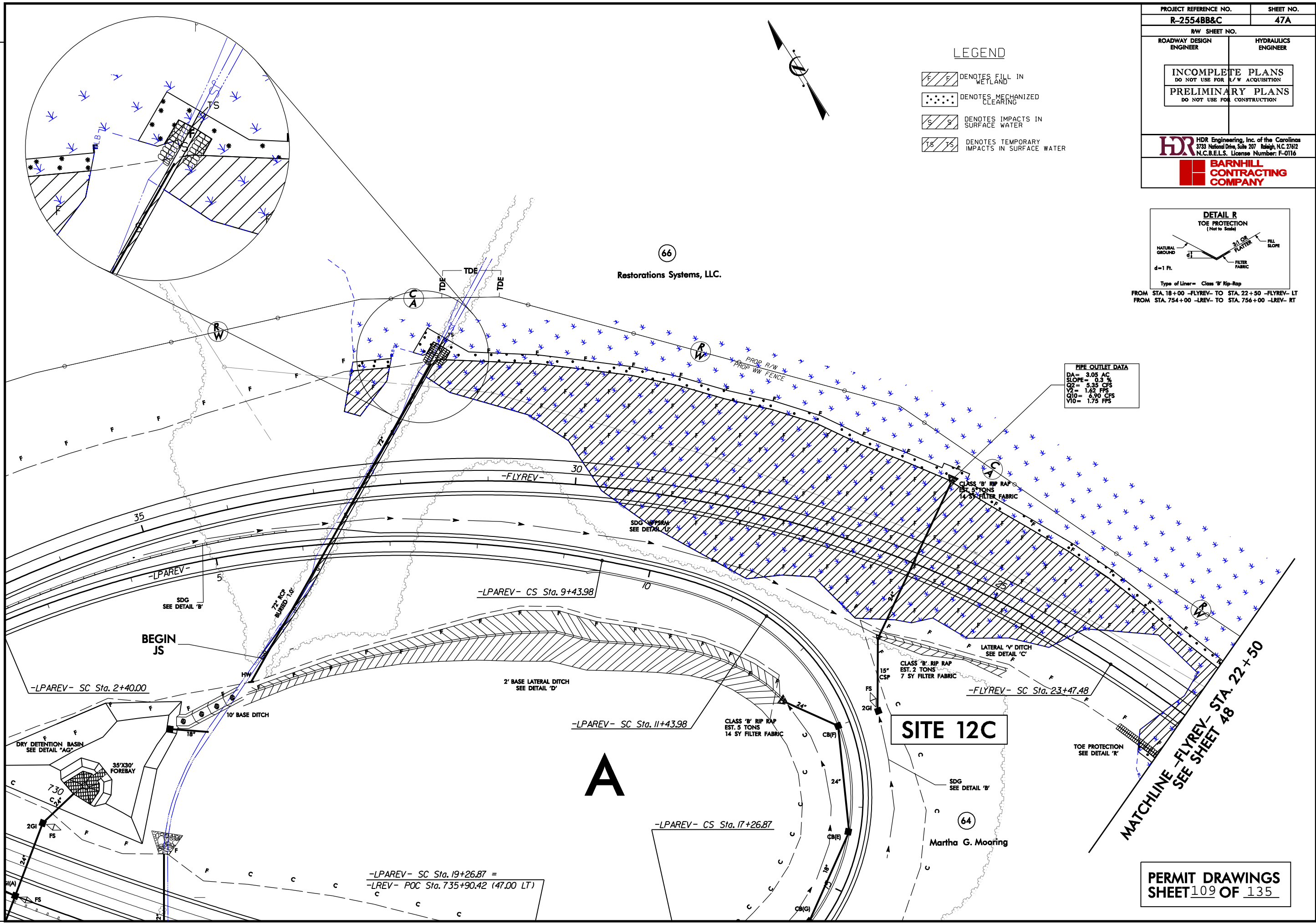
REVISIONS



PIPE OUTLET DATA

DA =	3.05 AC
SLOPE =	0.3 %
Q2 =	5.35 CFS
V2 =	1.62 FPS
Q10 =	6.90 CFS
V10 =	1.75 FPS

PLOT DRIVER: NCDOT_color_eng_100.plt
 USER: cmeyers
 FILE: HDR-Engineering\Dept_Marketing\DOTs_Regionals\Local_Agencies\IR-2554BB&C_Goldsboro\IR-2554BB&C_Hydro\culcs\PERMITS_Environment\Drw\ings\IR-2554BB&C_HYD_PRM_PLANSHEETS.dgn
 PENTABLE: NCDOT_permits_nocoon.tbl
 TIME: 1:36:28 PM
 DATE: 5/17/2013



PERMIT DRAWINGS
SHEET 109 OF 135

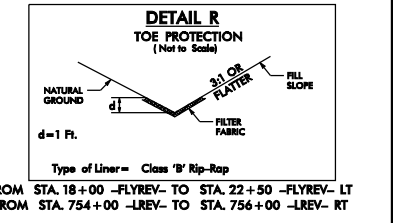
PROJECT REFERENCE NO. R-2554BB&C	SHEET NO. 47A
RW SHEET NO.	
ROADWAY DESIGN ENGINEER	HYDRAULICS ENGINEER
INCOMPLETE PLANS DO NOT USE FOR R/W ACQUISITION	
PRELIMINARY PLANS DO NOT USE FOR CONSTRUCTION	
HDR Engineering, Inc. of the Carolinas 3733 National Drive, Suite 207 Raleigh, N.C. 27612 N.C.B.E.L.S. License Number: F-0116	
BARNHILL CONTRACTING COMPANY	

LEGEND

- DENOTES FILL IN WETLAND
- DENOTES MECHANIZED CLEARING
- DENOTES IMPACTS IN SURFACE WATER
- DENOTES TEMPORARY IMPACTS IN SURFACE WATER



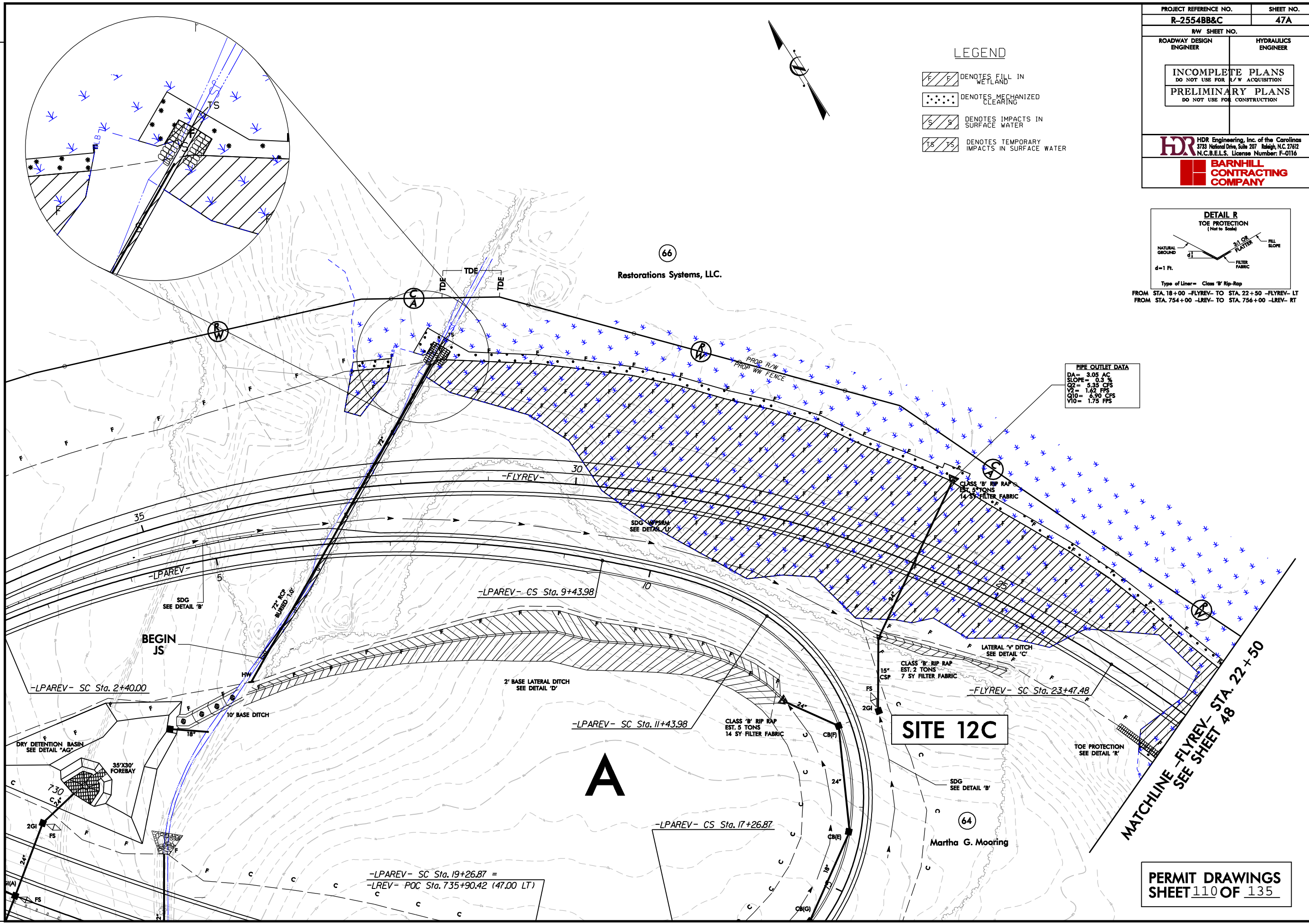
IMPACTS UPDATED 5-17-13



PIPE OUTLET DATA

DA=	3.05 AC
SLOPE=	0.3 %
Q2=	5.35 CFS
V2=	1.62 FPS
Q10=	6.90 CFS
V10=	1.75 FPS

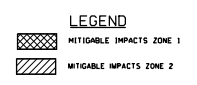
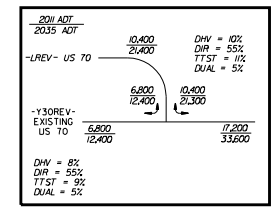
PLOT DRIVER: NCDOT_color_eng_100.plt
 USER: cmymers
 FILE: HDR-Engineering-Dept-Marketing\DOTs-Regional-Local-Agencies\IR-2554BB&C-Goldsboro\IR-2554BB&C-Hydro\culies\PERMITS-Environment\Dr-awings\IR-2554BB&C-HYD-PRM-PLANSHEETS.dgn
 PENTABLE: NCDOT_permits.tbl
 TIME: 1:32:37 PM
 DATE: 5/17/2013



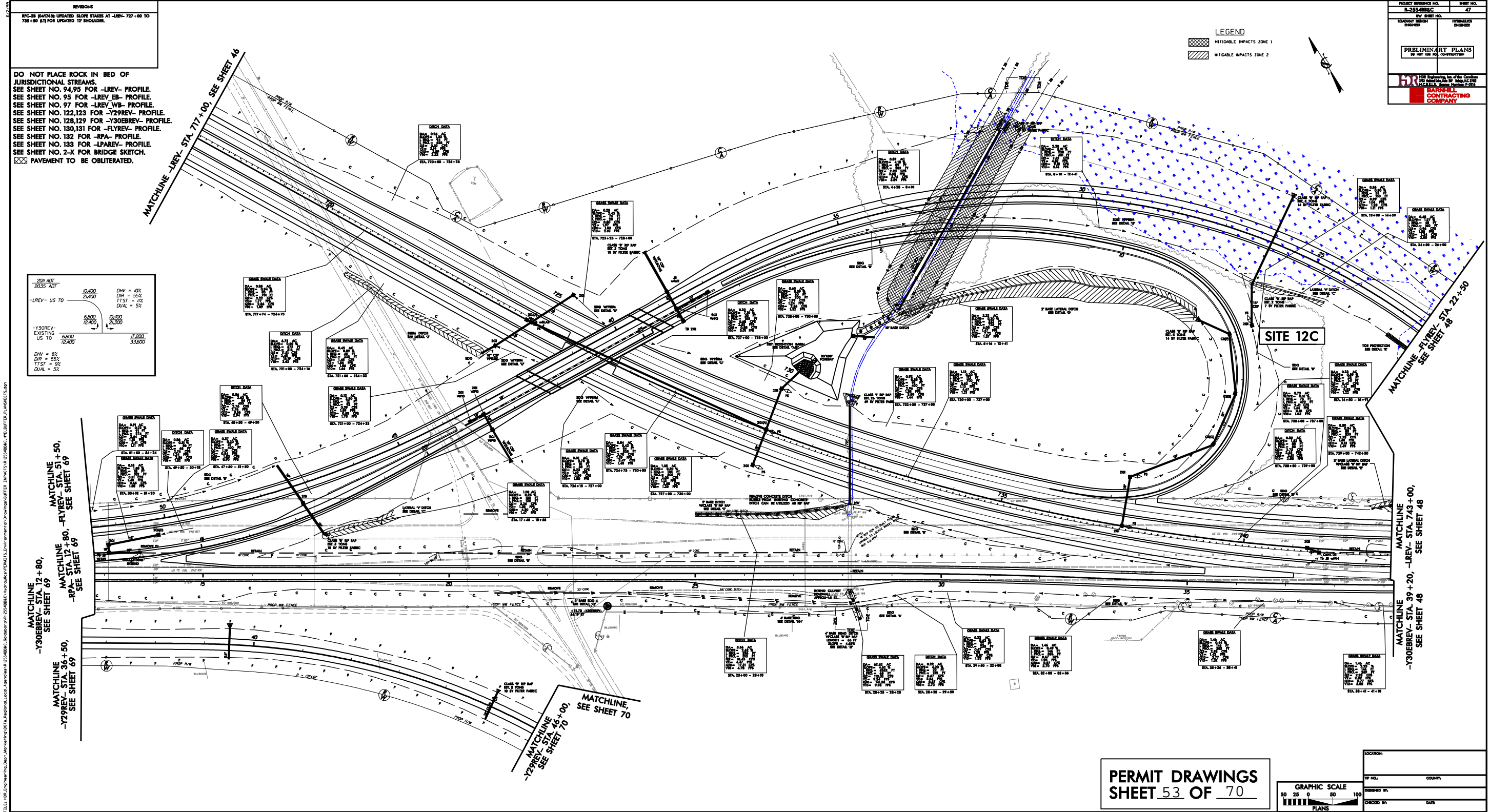
PERMIT DRAWINGS
SHEET 110 OF 135

REVISIONS
RPC-08 (04/13/10): UPDATED SLOPE STAKES AT -LREV- 727+00 TO 728+89 (S) FOR UPDATED 12' SHOULDER.

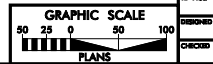
DO NOT PLACE ROCK IN BED OF JURISDICTIONAL STREAMS.
SEE SHEET NO. 94,95 FOR -LREV- PROFILE.
SEE SHEET NO. 95 FOR -LREV EB- PROFILE.
SEE SHEET NO. 97 FOR -LREV WB- PROFILE.
SEE SHEET NO. 122,123 FOR -Y29REV- PROFILE.
SEE SHEET NO. 128,129 FOR -Y30REV- PROFILE.
SEE SHEET NO. 130,131 FOR -FLYREV- PROFILE.
SEE SHEET NO. 132 FOR -RPA- PROFILE.
SEE SHEET NO. 133 FOR -LPAREV- PROFILE.
SEE SHEET NO. 2-X FOR BRIDGE SKETCH.
☒ PAVEMENT TO BE OBLITERATED.



PROJECT NUMBER NO.	1-2554862C	SHEET NO.	47
BY	BY SHEET NO.		
BOUNDARY DESIGN NUMBER		ISSUED FOR	CONSTRUCTION
PRELIMINARY PLANS			
NO COPY FOR POST			
HR Engineering, Inc. of the County of Santa Clara, California License Number E-21212			
BARONCEL CONTRACTING COMPANY			



PERMIT DRAWINGS
SHEET 53 OF 70



LOCATION	
TWP. NO.	COUNTY
DRAWN BY	DATE
CHECKED BY	

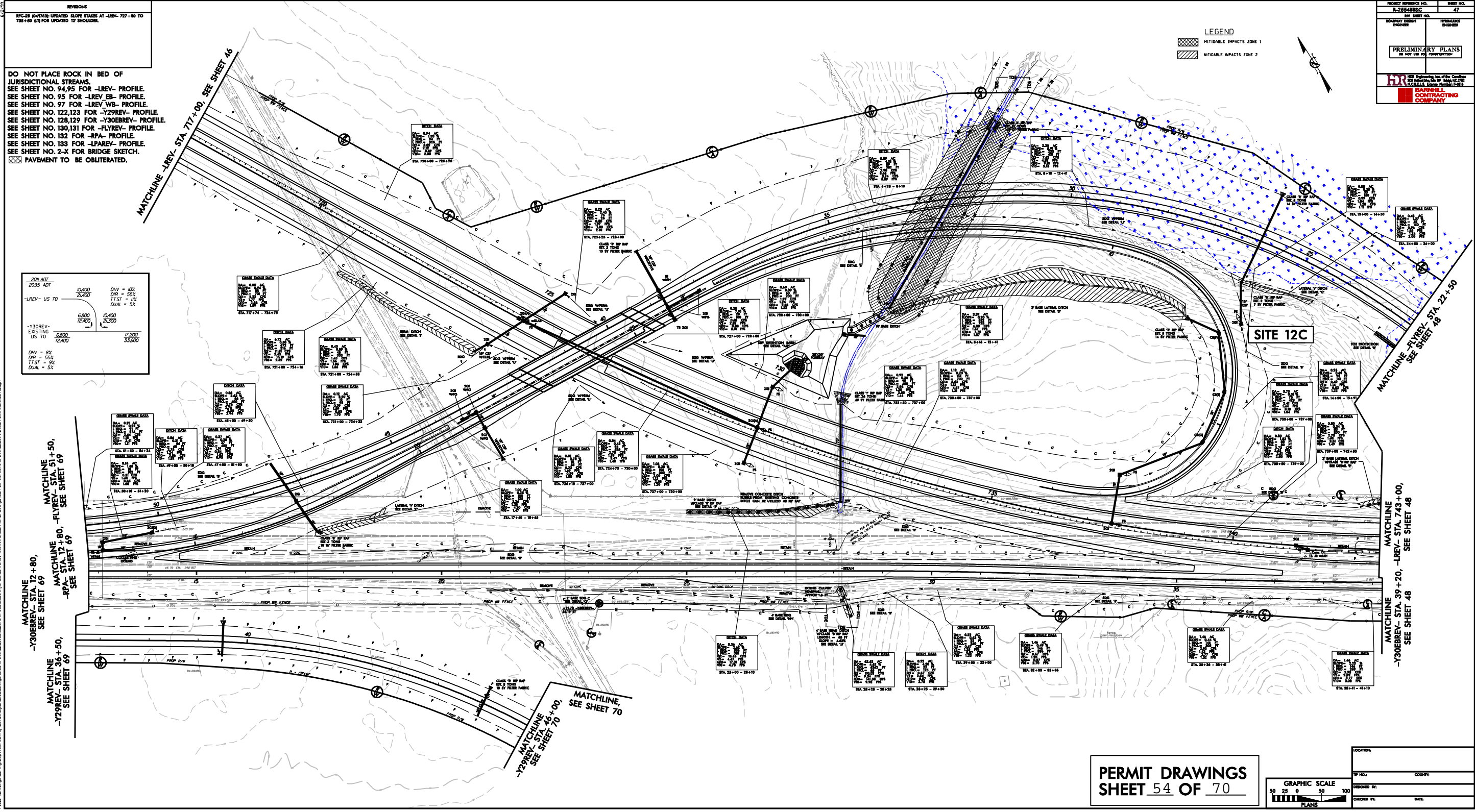
PENINSULA: N0001, 0490114, 0000120
TERRY: 70814, 010
FILE: 2011-11-14 11:00:00
PLOT: 01/18/11 10:51:00
PLOT: 01/18/11 10:51:00

REVISIONS	
1	RPC-08 (04/13/10); UPDATED SLOPE STAKES AT -LREV- STA. 777+00 TO 785+00 (S) FOR UPDATED 12' SHOULDER.

DO NOT PLACE ROCK IN BED OF JURISDICTIONAL STREAMS.
 SEE SHEET NO. 94,95 FOR -LREV- PROFILE.
 SEE SHEET NO. 95 FOR -LREV-EB- PROFILE.
 SEE SHEET NO. 97 FOR -LREV-WB- PROFILE.
 SEE SHEET NO. 122,123 FOR -Y29REV- PROFILE.
 SEE SHEET NO. 128,129 FOR -Y30REV- PROFILE.
 SEE SHEET NO. 130,131 FOR -FLYREV- PROFILE.
 SEE SHEET NO. 132 FOR -RPA- PROFILE.
 SEE SHEET NO. 133 FOR -LPAREV- PROFILE.
 SEE SHEET NO. 2-X FOR BRIDGE SKETCH.
 ☒ PAVEMENT TO BE OBLITERATED.

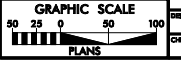
2011 ADT		2035 ADT	
-LREV- US TO	10,400	DIV = 40%	
	21,400	DIV = 55%	
		T/ST = 10%	
		DUAL = 5%	
-Y30REV- EXISTING US TO	6,800	10,400	
	12,400	17,200	
		33,600	
DIV = 8%			
DIV = 55%			
T/ST = 9%			
DUAL = 5%			

PENNSYLVANIA DEPARTMENT OF TRANSPORTATION
 PROJECT NO. 08-011(01)
 COUNTY: ALLEGANY
 LOCATION: STATE ROUTE 100
 DRAWING NO. 08-011(01)-014
 SHEET NO. 54 OF 70
 DATE: 08/11/10
 DESIGNER: J. J. COOPER, INC.
 CHECKER: J. J. COOPER, INC.
 APPROVED: J. J. COOPER, INC.
 IMPACTS: 2008-011(01)-014-014




PROJECT NUMBER NO.	08-011(01)
SHEET NO.	54
DATE	08/11/10
BY	JJC
CHECKED BY	JJC
DESIGNED BY	JJC
APPROVED BY	JJC
CONTRACTOR	J. J. COOPER, INC.
ENGINEER	J. J. COOPER, INC.
ARCHITECT	J. J. COOPER, INC.
PLANNING	J. J. COOPER, INC.
ENVIRONMENTAL	J. J. COOPER, INC.
UTILITY	J. J. COOPER, INC.
TRAFFIC	J. J. COOPER, INC.
GEOTECHNICAL	J. J. COOPER, INC.
HYDROLOGICAL	J. J. COOPER, INC.
ENVIRONMENTAL	J. J. COOPER, INC.
ARCHITECTURAL	J. J. COOPER, INC.
MECHANICAL	J. J. COOPER, INC.
ELECTRICAL	J. J. COOPER, INC.
PLUMBING	J. J. COOPER, INC.
MECHANICAL	J. J. COOPER, INC.
ELECTRICAL	J. J. COOPER, INC.
PLUMBING	J. J. COOPER, INC.
MECHANICAL	J. J. COOPER, INC.
ELECTRICAL	J. J. COOPER, INC.
PLUMBING	J. J. COOPER, INC.


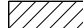
PERMIT DRAWINGS
SHEET 54 OF 70

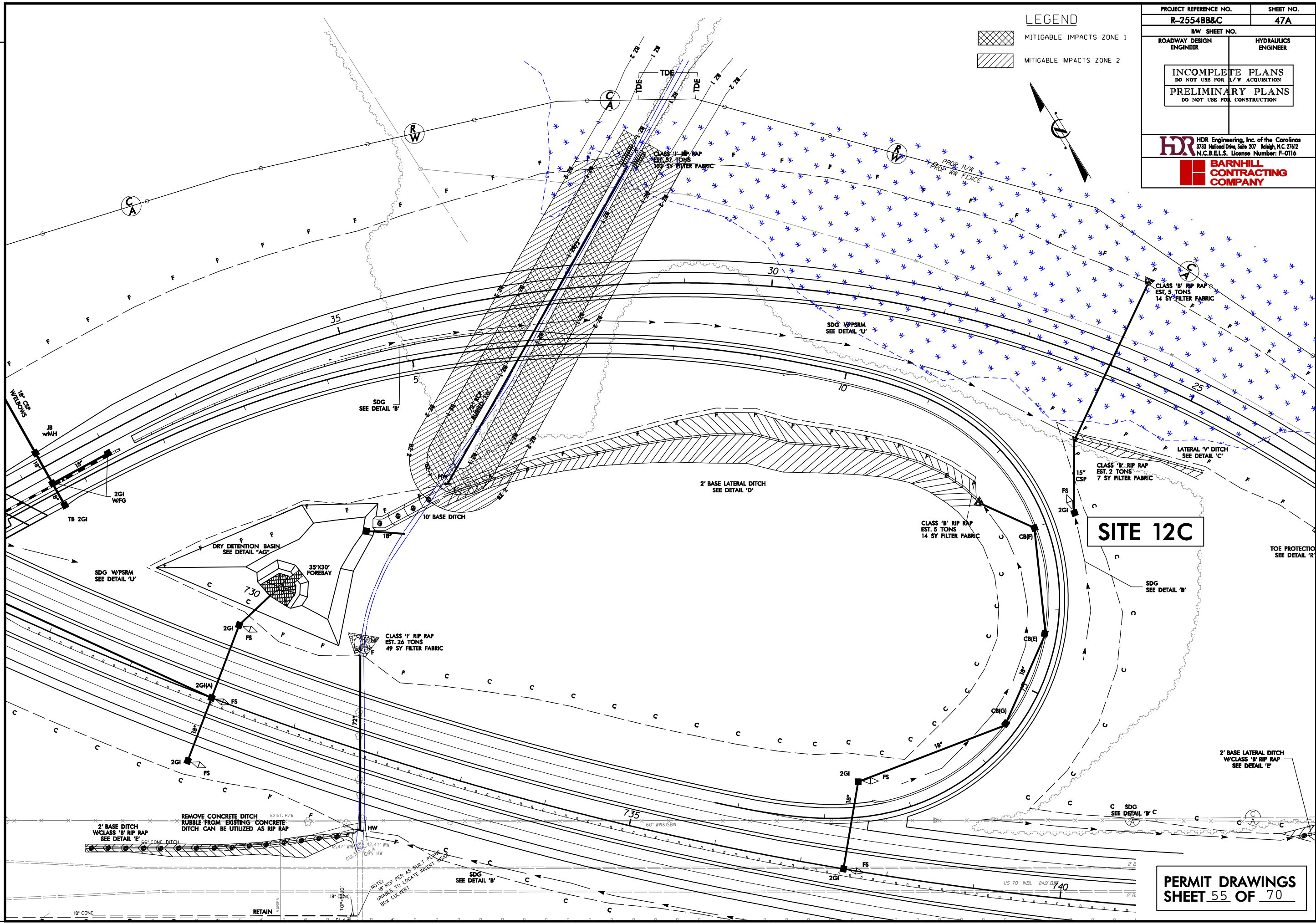


LOCATION	
TWP. NO.	COUNTY
DRAWN BY	CHECKED BY
DATE	

PROJECT REFERENCE NO. R-2554BB&C	SHEET NO. 47A
RW SHEET NO. ROADWAY DESIGN ENGINEER	HYDRAULICS ENGINEER
INCOMPLETE PLANS DO NOT USE FOR R/W ACQUISITION PRELIMINARY PLANS DO NOT USE FOR CONSTRUCTION	
 HDR Engineering, Inc. of the Carolinas 3733 National Drive, Suite 207 Raleigh, N.C. 27612 N.C.B.E.L.S. License Number: F-0116  BARNHILL CONTRACTING COMPANY	



LEGEND

-  MITIGABLE IMPACTS ZONE 1
-  MITIGABLE IMPACTS ZONE 2


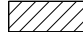


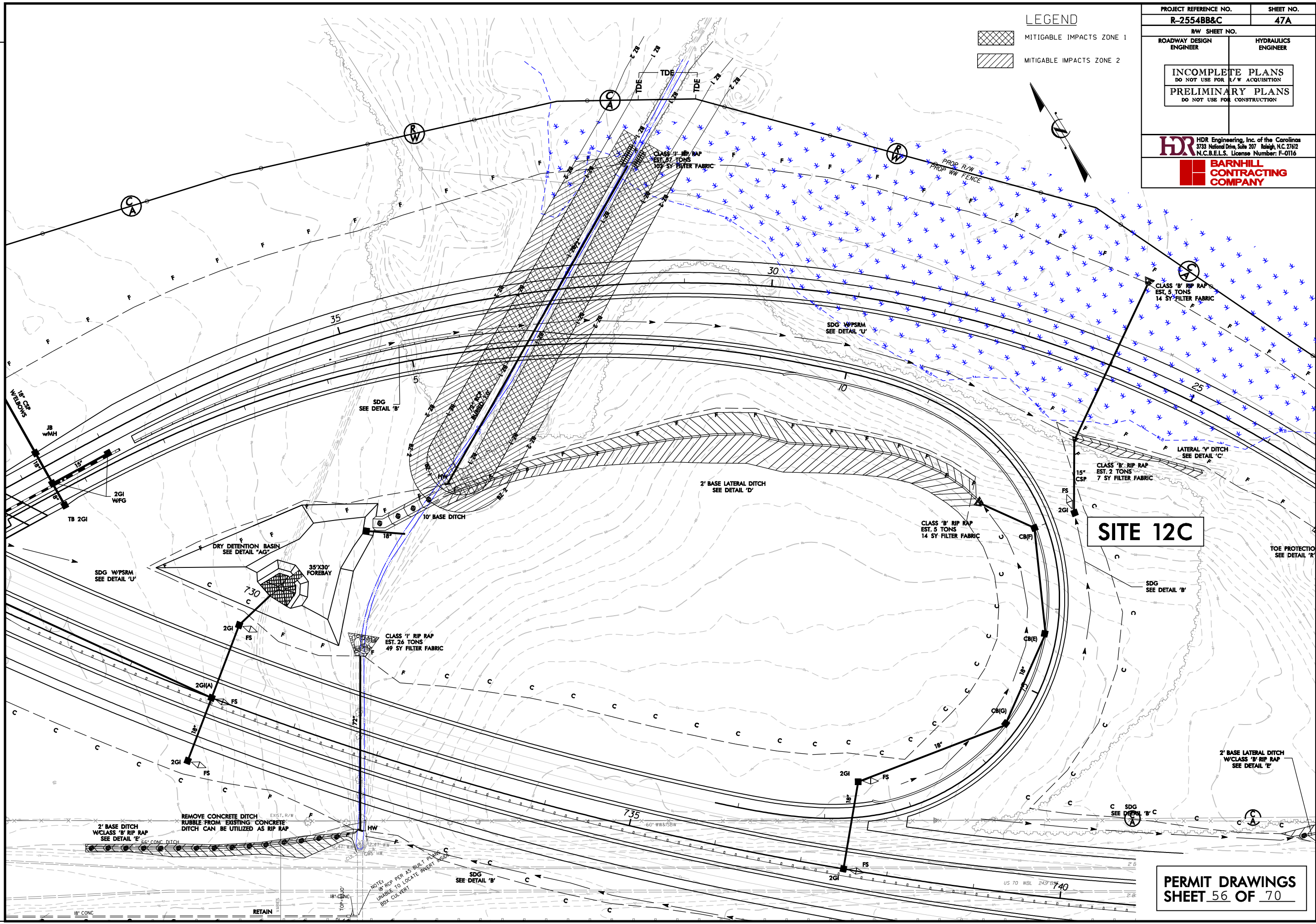
REVISIONS

PLOT DRIVER: NCDOT_color_eng_100.plt
 USER: cmeyers
 FILE: HDR.Engineering\Dept_Marketing\DOTs_Regionals\Local_Agencies\IR-2554BB&C_Goldsboro\IR-2554BB&C_Hydraulics\PERMITS_Environment\Drawings\BUFFER_IMPACTS\IR-2554BB&C_HYD_BUFFER_PLANS\SHEETS.dgn

PROJECT REFERENCE NO. R-2554BB&C	SHEET NO. 47A
RW SHEET NO. ROADWAY DESIGN ENGINEER	HYDRAULICS ENGINEER
INCOMPLETE PLANS DO NOT USE FOR R/W ACQUISITION PRELIMINARY PLANS DO NOT USE FOR CONSTRUCTION	
 HDR Engineering, Inc. of the Carolinas 3733 National Drive, Suite 207 Raleigh, N.C. 27612 N.C.B.E.L.S. License Number: F-0116 	

LEGEND

-  MITIGABLE IMPACTS ZONE 1
-  MITIGABLE IMPACTS ZONE 2



SITE 12C



PERMIT DRAWINGS
SHEET 56 OF 70

REVISIONS



PLOT DRIVER: NCDOT_color_eng_100.plt
 USER: cmeyers
 DATE: 5/17/2013
 TIME: 2:12:48 PM
 FILE: HDR.Engineering.Drafting\DOTs.Regional.Local.Agency\IR-2554BB&C.Goldsboro\IR-2554BB&C.Hydro\Impacts\IR-2554BB&C.HYD.BUFFER.PLANS\PLANSHEETS.dgn

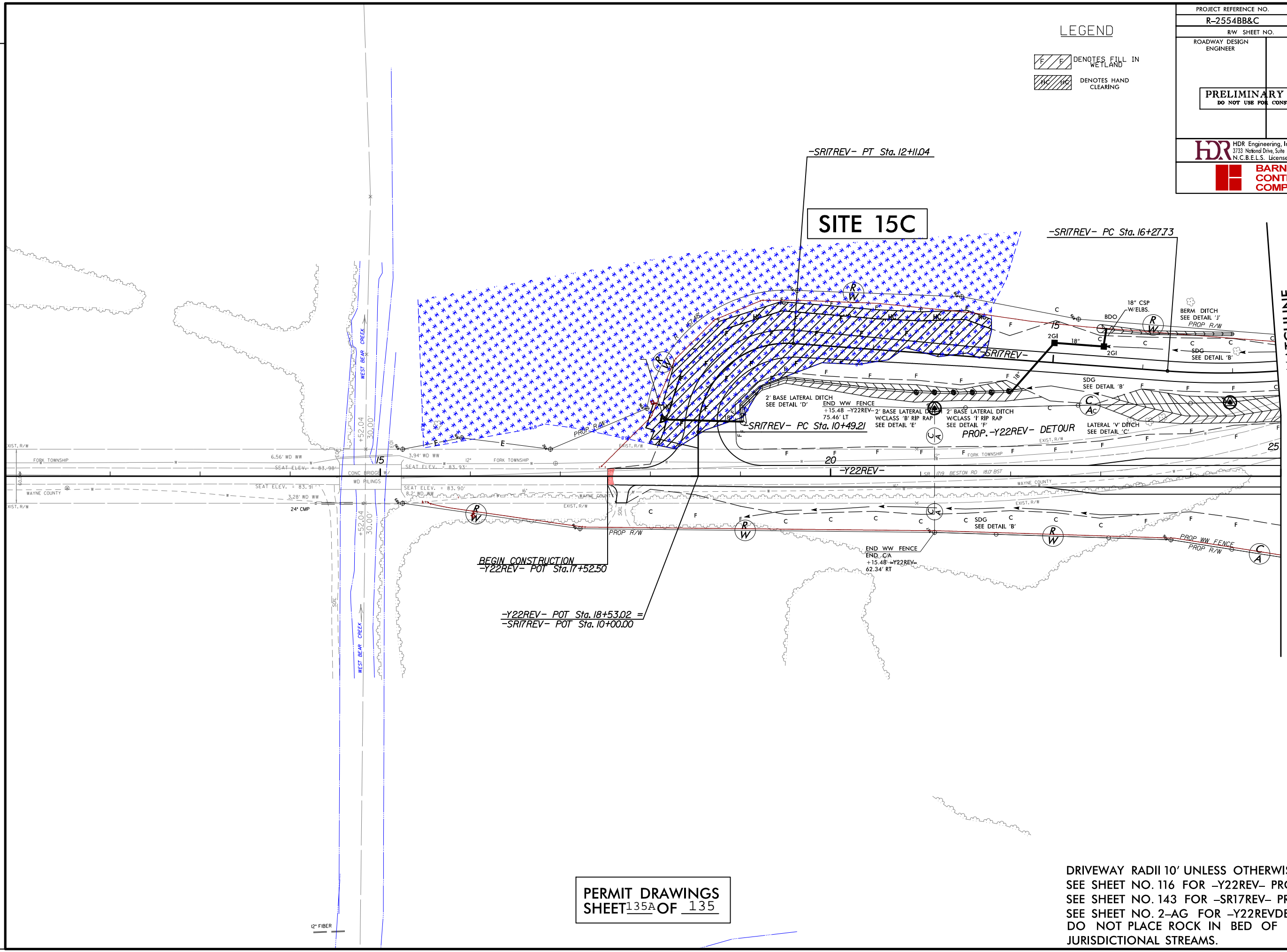
REMOVE CONCRETE DITCH
 W/CLASS 'B' RIP RAP
 SEE DETAIL 'E'

NOTES:
 1. RIP PER AS BUILT PLAN
 2. UNLESS TO LOCATE INVERT MARK
 BOX CULVERT

PROJECT REFERENCE NO. R-2554BB&C	SHEET NO. 65
RW SHEET NO.	
ROADWAY DESIGN ENGINEER	HYDRAULICS ENGINEER
PRELIMINARY PLANS DO NOT USE FOR CONSTRUCTION	
 HDR Engineering, Inc. of the Carolinas 3733 National Drive, Suite 207 Raleigh, N.C. 27612 N.C.B.E.L.S. License Number: F-0116	
 BARNHILL CONTRACTING COMPANY	

LEGEND

-  DENOTES FILL IN WETLAND
-  DENOTES HAND CLEARING



PERMIT DRAWINGS
 SHEET 135A OF 135



DRIVEWAY RADII 10' UNLESS OTHERWISE NOTED.
 SEE SHEET NO. 116 FOR -Y22REV- PROFILE.
 SEE SHEET NO. 143 FOR -SR17REV- PROFILE.
 SEE SHEET NO. 2-AG FOR -Y22REVDET-.
 DO NOT PLACE ROCK IN BED OF JURISDICTIONAL STREAMS.

MATCHLINE
 -SR17REV- STA. 17 + 50
 SEE SHEET 31
 MATCHLINE
 -Y22REV- STA. 25 + 00
 SEE SHEET 31

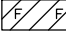

PLOT DRIVER: NCDOT_color_eng_100.plt
 USER: cmayers
 FILE: HDR.Engineering.Dept.Marketing\DOTs.Regional\Local_Agencies\IR-2554BB&C.Goldsboro\IR-2554BB&C.Hydrolics\PERMITS.Environmental\Drawings\IR-2554BB&C.HYD.PRM.PLANSHEETS.dgn

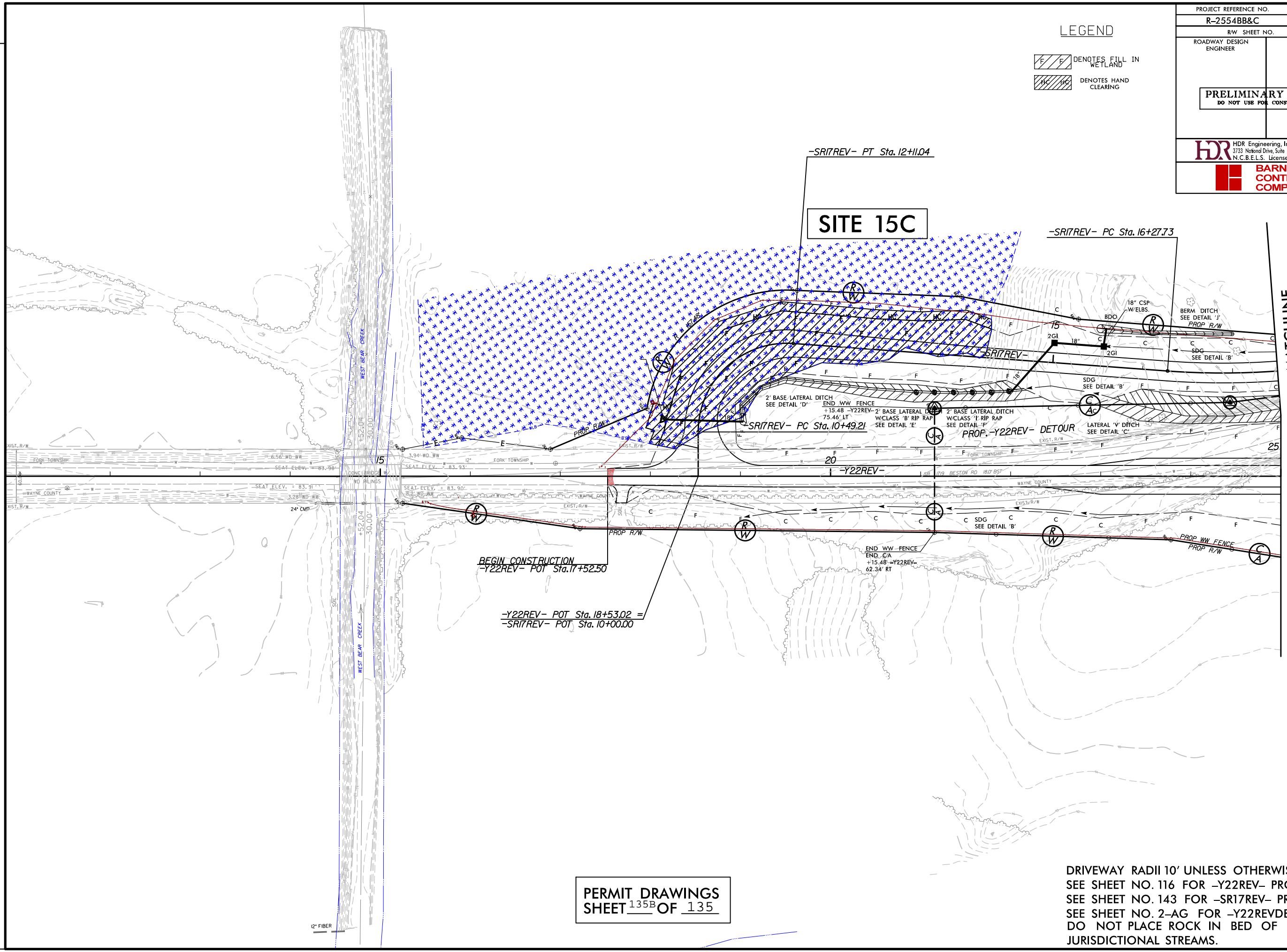
REVISIONS

SHEET ADDED 4-15-13

PROJECT REFERENCE NO. R-2554BB&C	SHEET NO. 65
RW SHEET NO.	
ROADWAY DESIGN ENGINEER	HYDRAULICS ENGINEER
PRELIMINARY PLANS DO NOT USE FOR CONSTRUCTION	
 HDR Engineering, Inc. of the Carolinas 3733 National Drive, Suite 207 Raleigh, N.C. 27612 N.C.B.E.L.S. License Number: F-0116	
 BARNHILL CONTRACTING COMPANY	

LEGEND

-  DENOTES FILL IN WETLAND
-  DENOTES HAND CLEARING



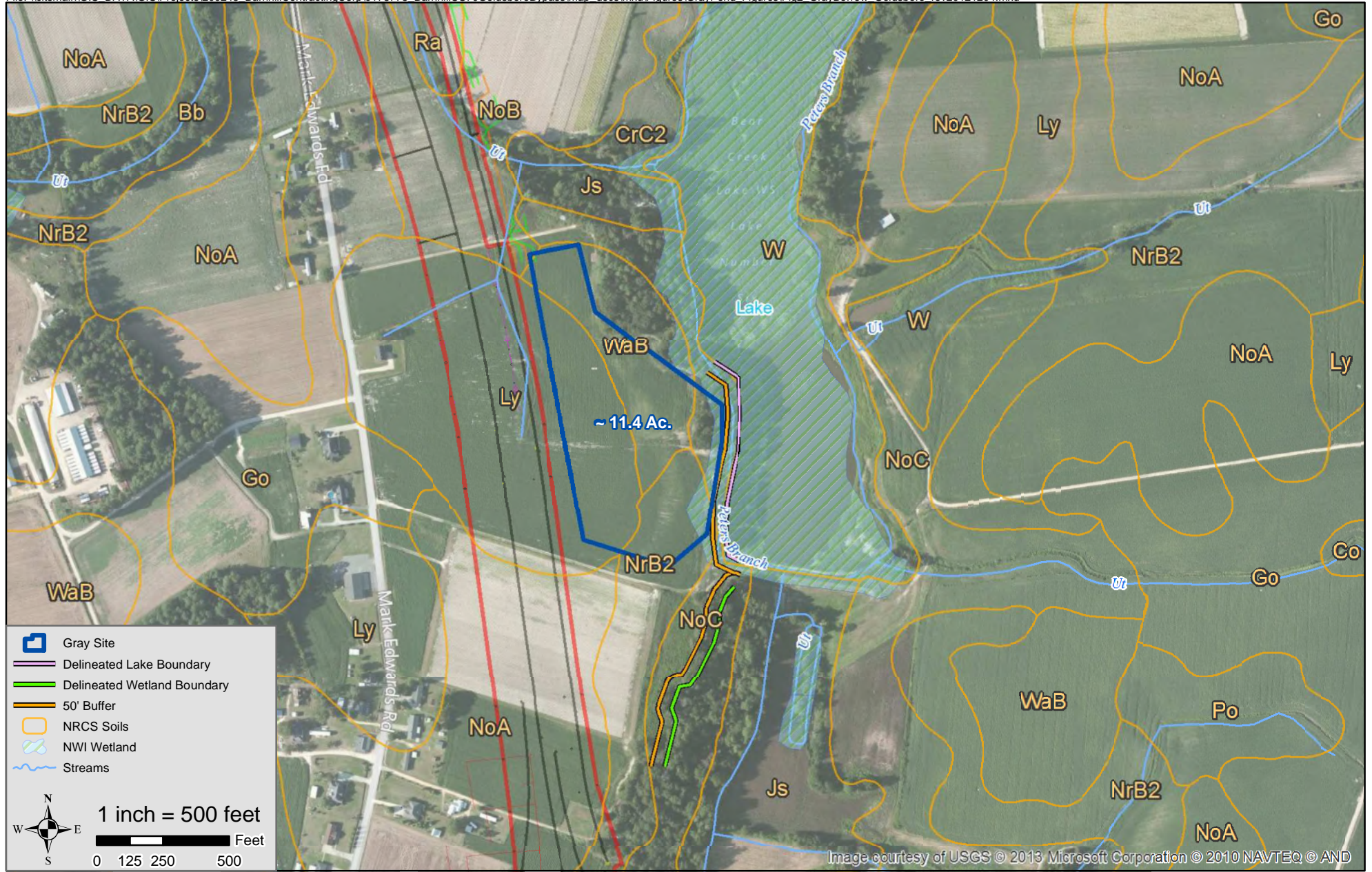
PERMIT DRAWINGS
 SHEET 135^B OF 135

DRIVEWAY RADII 10' UNLESS OTHERWISE NOTED.
 SEE SHEET NO. 116 FOR -Y22REV- PROFILE.
 SEE SHEET NO. 143 FOR -SR17REV- PROFILE.
 SEE SHEET NO. 2-AG FOR -Y22REVDET-.
 DO NOT PLACE ROCK IN BED OF JURISDICTIONAL STREAMS.

MATCHLINE -SR17REV- STA. 17 + 50
 SEE SHEET 31
 MATCHLINE -Y22REV- STA. 25 + 00
 SEE SHEET 31



USGS Jason Quadrangle: Vicinity Map
Figure 1



NRCS Soils/National Wetlands Inventory (NWI) Map
Figure 2

