



This option provides a decorative green rail, stamped herringbone-pattern sidewalk, and traditional light posts. A series of planters with native plants act as a natural border between pedestrians and vehicles.

FIGURE 36



North Carolina Department of Transportation
 Division of Highways
 Project Development & Environmental Analysis Section
 Traffic Noise & Air Quality Group

I-40 Business/US 421/US 158
 Pavement Rehabilitation and Replacement of Bridges
 Forsyth County, TIP #U-2827B

FIGURE 37
 Design Noise Report
 Noise Study Areas
 Scale: 1" = 500' January 2014

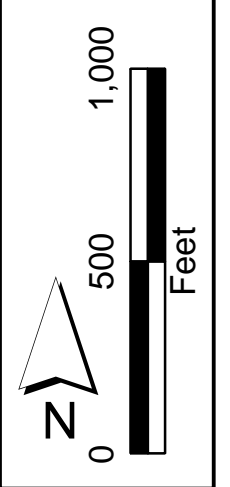
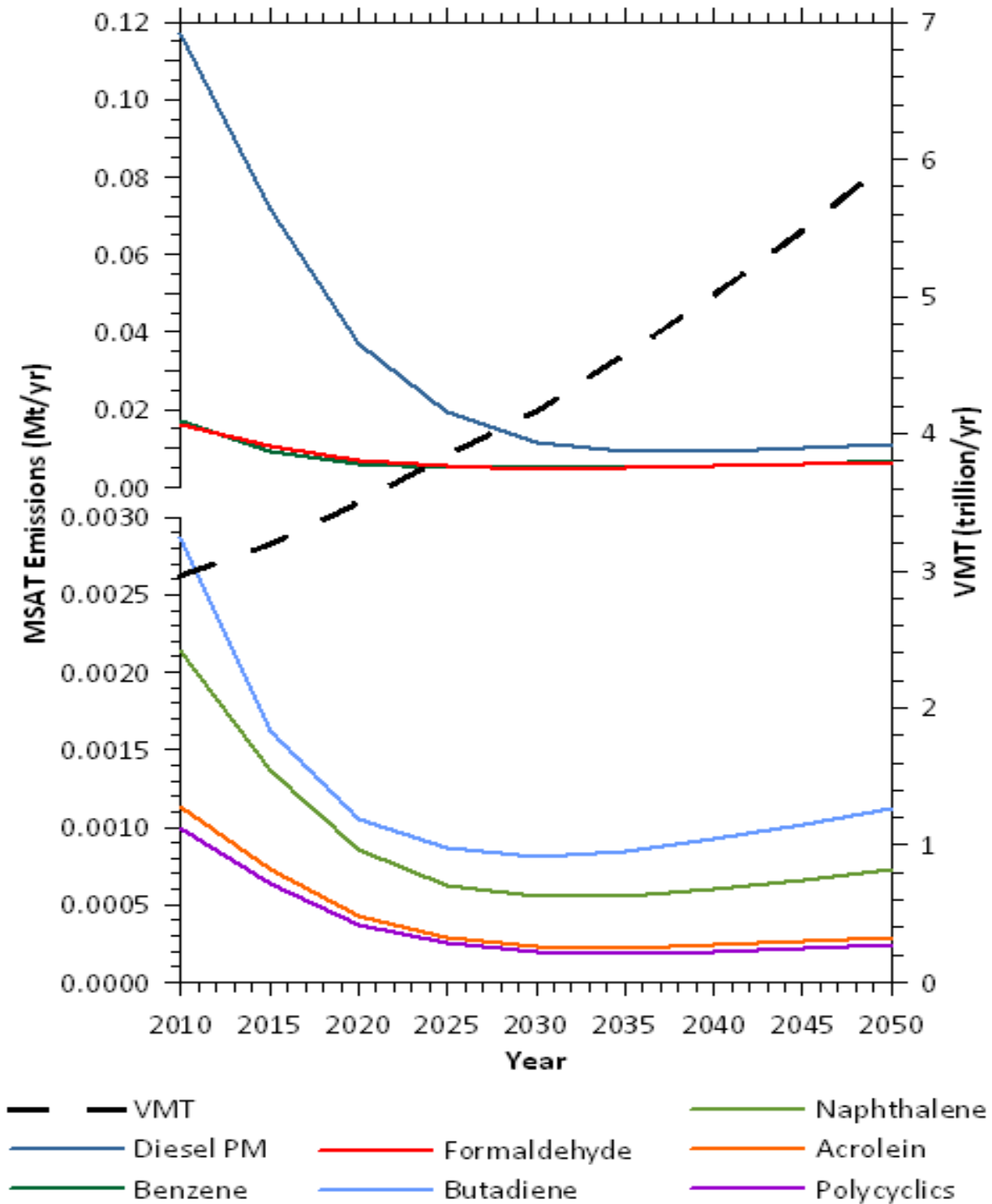


Figure 38

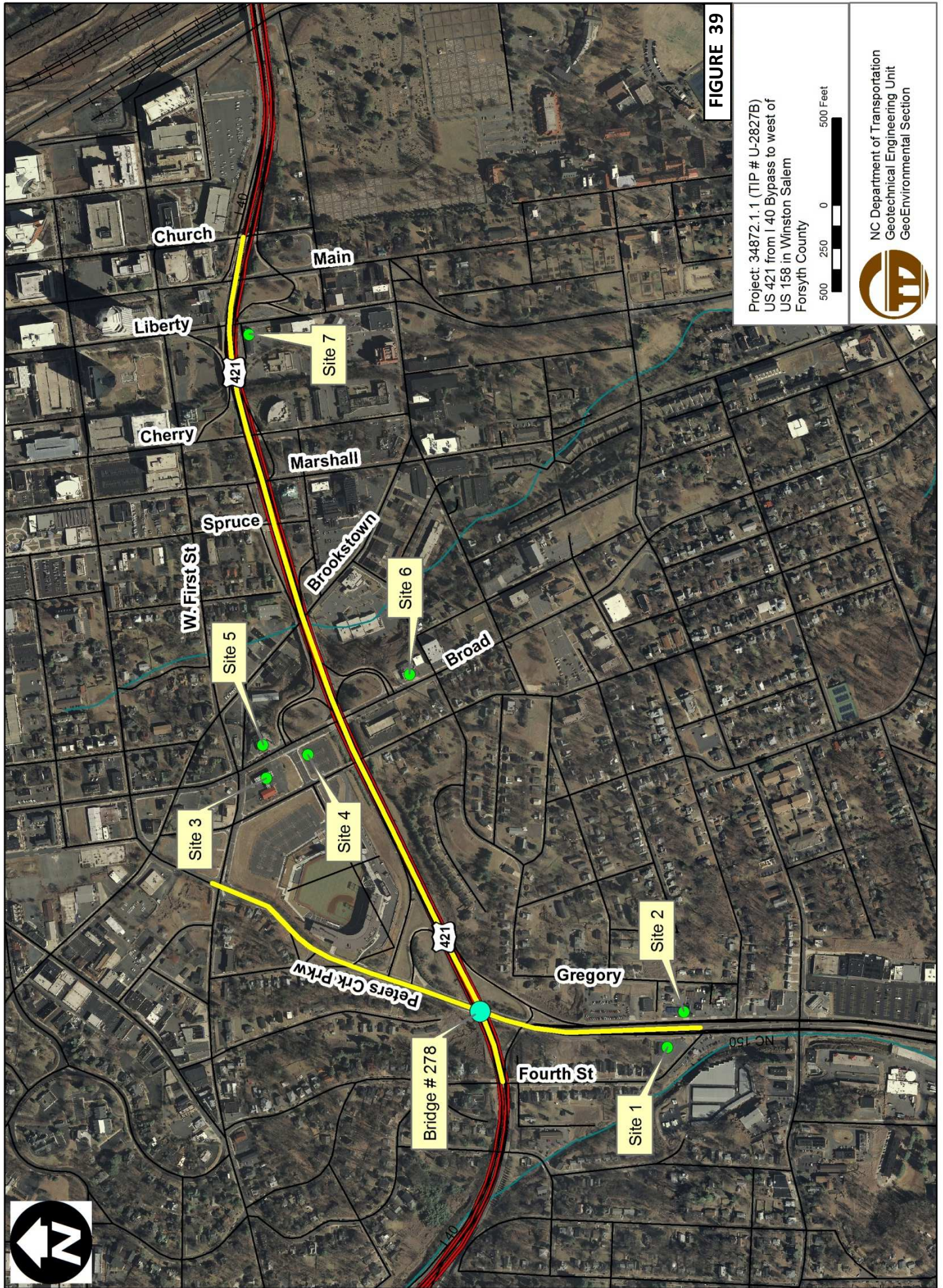
National MSAT Emission Trends 1999 – 2050
 For Vehicles Operating On Roadways Using EPA's MOVES2010b Model



Note: Trends for specific locations may be different, depending on locally derived information representing vehicle-miles travelled, vehicle speeds, vehicle mix, fuels, emission control programs, meteorology, and other factors

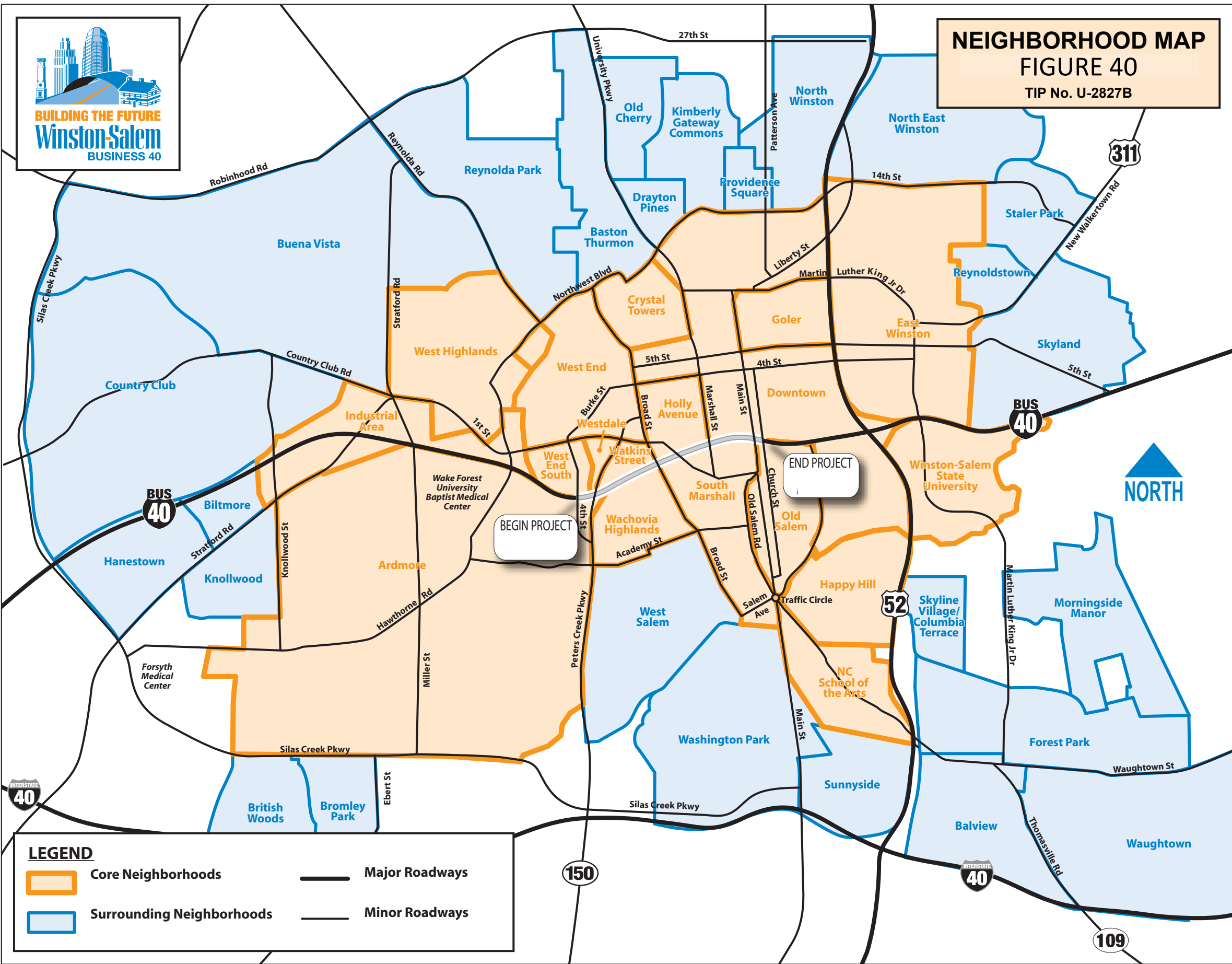
Source: EPA MOVES2010b model runs conducted during May - June 2012 by FHWA.

Location of US Ts, Landfills, & Other Potentially Contaminated Sites





NEIGHBORHOOD MAP
FIGURE 40
 TIP No. U-2827B



LEGEND

	Core Neighborhoods		Major Roadways
	Surrounding Neighborhoods		Minor Roadways



INTERSTATE
40

BUS
40

BUS
40

52

311

150

INTERSTATE
40

109