

CONTRACT: C204225 TIP PROJECT: U-5713 /R-5777A&B

See Sheet 1A For Index of Sheets  
See Sheet 1B For Standard Symbology Sheet

STATE OF NORTH CAROLINA  
DIVISION OF HIGHWAYS

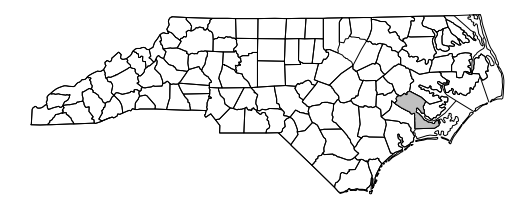
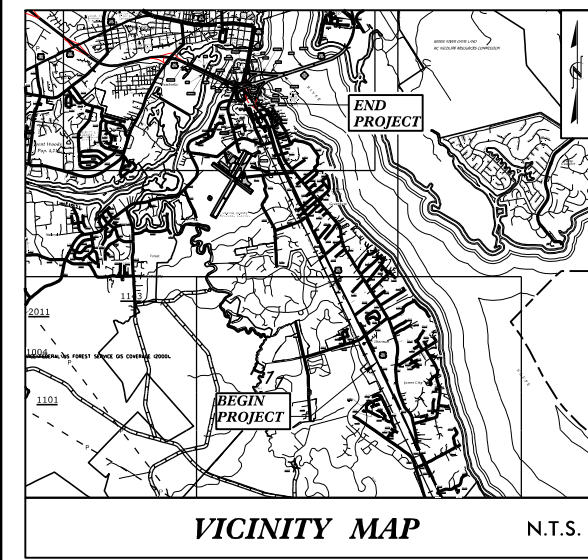
PERMIT DRAWING  
SHEET 1 OF 11  
DATE: 06-03-2020

STATE	STATE PROJECT REFERENCE NO.	SHEET NO.	TOTAL SHEETS
N.C.	U-5713/R-5777A&B	1	
STATE PROJ. NO.	F.A. PROJ. NO.	DESCRIPTION	
50111.3.1	N/A	DESIGN-BUILD	

**CRAVEN COUNTY**

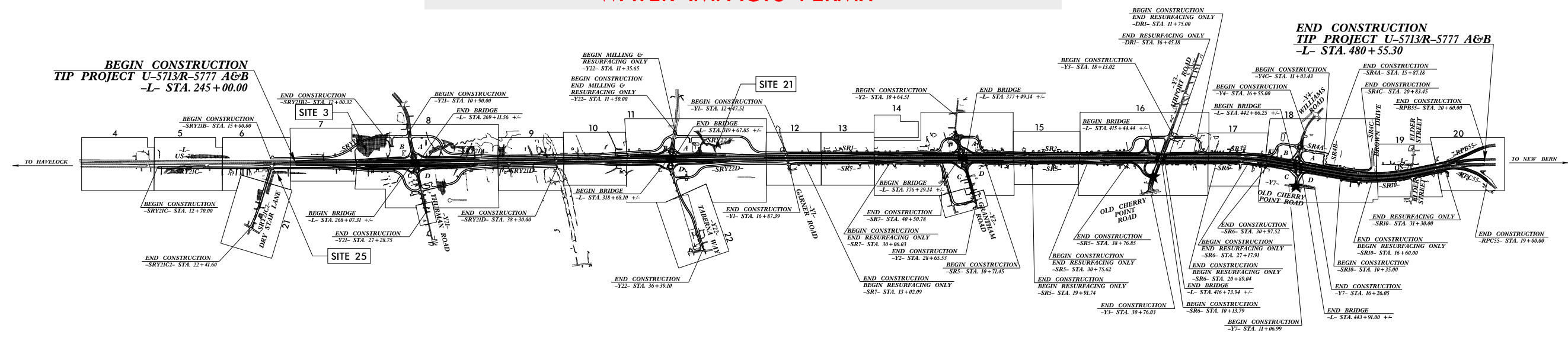
LOCATION: U.S. 70 FROM EASTERN APPROACH OF THE NEUSE RIVER BRIDGE TO APPROXIMATELY ONE (1) MILE EAST OF S.R. 1116 (THURMAN ROAD)

TYPE OF WORK: GRADING, DRAINAGE, PAVING, SIGNING, ITS AND STRUCTURES



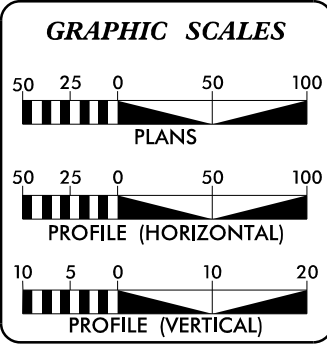
DESIGN CRITERIA AND STRUCTURE RECOMMENDATIONS  
SUBMITTED: 02-20-20

UTILITY WETLAND AND SURFACE WATER IMPACTS PERMIT



THIS PROJECT IS WITHIN THE MUNICIPAL BOUNDARY OF THE CITY OF NEW BERN  
CLEARING ON THIS PROJECT SHALL BE PERFORMED TO THE LIMITS ESTABLISHED BY METHOD III.  
THIS IS A CONTROLLED ACCESS PROJECT WITH ACCESS BEING LIMITED TO INTERCHANGES.

PRELIMINARY PLANS  
DO NOT USE FOR CONSTRUCTION  
DOCUMENT NOT CONSIDERED FINAL  
UNLESS ALL SIGNATURES COMPLETED



DESIGN DATA

ADT 2015	=	45,200
ADT 2040	=	62,000
K	=	8%
D	=	50%
T	=	7%*
V	=	60 MPH
* (TTST = 2% + DUAL 5%)		
FUNC. CLASSIFICATION	=	INTERSTATE STATEWIDE TIER

PROJECT LENGTH

LENGTH ROADWAY TIP PROJECT U-5713 /R-5777A&B	=	4.350 MILES
LENGTH STRUCTURE TIP PROJECT U-5713 /R-5777A&B	=	0.111 MILES
TOTAL LENGTH OF TIP PROJECT U-5713 /R-5777A&B	=	4.461 MILES

NCDOT CONTACT: CADMUS CAPEHART, PE  
DIVISION 2 - DIVISION CONSTRUCTION ENGINEER

PLANS PREPARED FOR THE NCDOT BY:

**Balfour Beatty Infrastructure Inc.**

2018 STANDARD SPECIFICATIONS

RIGHT OF WAY DATE: SEPTEMBER 17, 2019

LETTING DATE: SEPTEMBER 17, 2019

J. ADAM FREEMAN, PE  
PROJECT ENGINEER

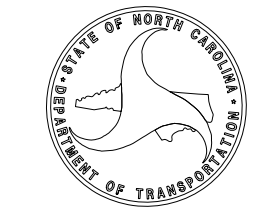
NARONG PHAL, PE  
PROJECT DESIGN ENGINEER

HYDRAULICS ENGINEER

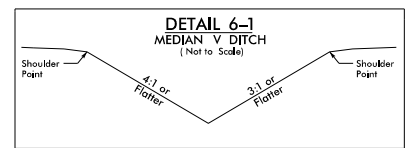
SIGNATURE: \_\_\_\_\_ P.E.

ROADWAY DESIGN ENGINEER

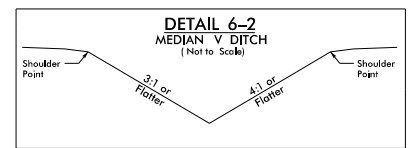
SIGNATURE: \_\_\_\_\_ P.E.



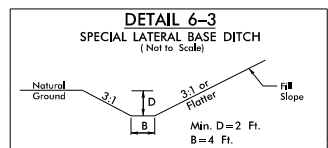
\$\$\$\$\$ SYSTEM \$\$\$\$\$\$  
\$\$\$\$\$ DESIGN \$\$\$\$\$\$  
\$\$\$\$\$ USERNAME \$\$\$\$\$\$



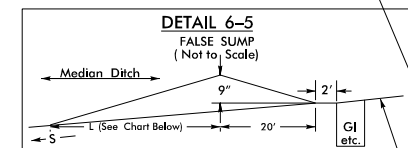
FROM STA. 25+50 -SRY21C- TO STA. 34+50 -SRY21C- LT  
 FROM STA. 36+00 -SRY21C- TO STA. 39+00 -SRY21C- LT



FROM STA. 15+00 -SRY21B- TO STA. 19+00 -SRY21B- RT

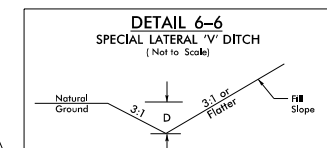


FROM STA. 14+50 -SRY21B- RT TO STA. 19+00 -SRY21B- LT

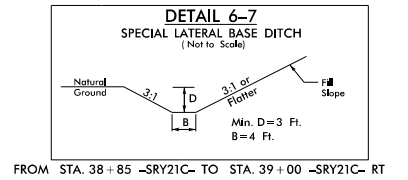


Ditch Grade	L	Ditch Grade	L
0.0% To 2.0%	20'	Over 4.0% To 6.0%	40'
Over 2.0% To 4.0%	30'	Over 6.0%	50'

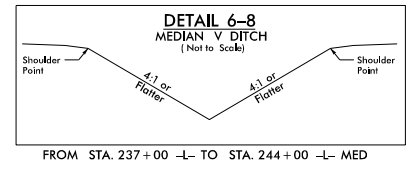
STA. 26+27 -SRY21C- LT  
 STA. 240+47 -L- MED



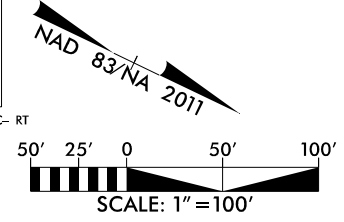
FROM STA. 36+00 -SRY21C- TO STA. 38+85 -SRY21C- RT



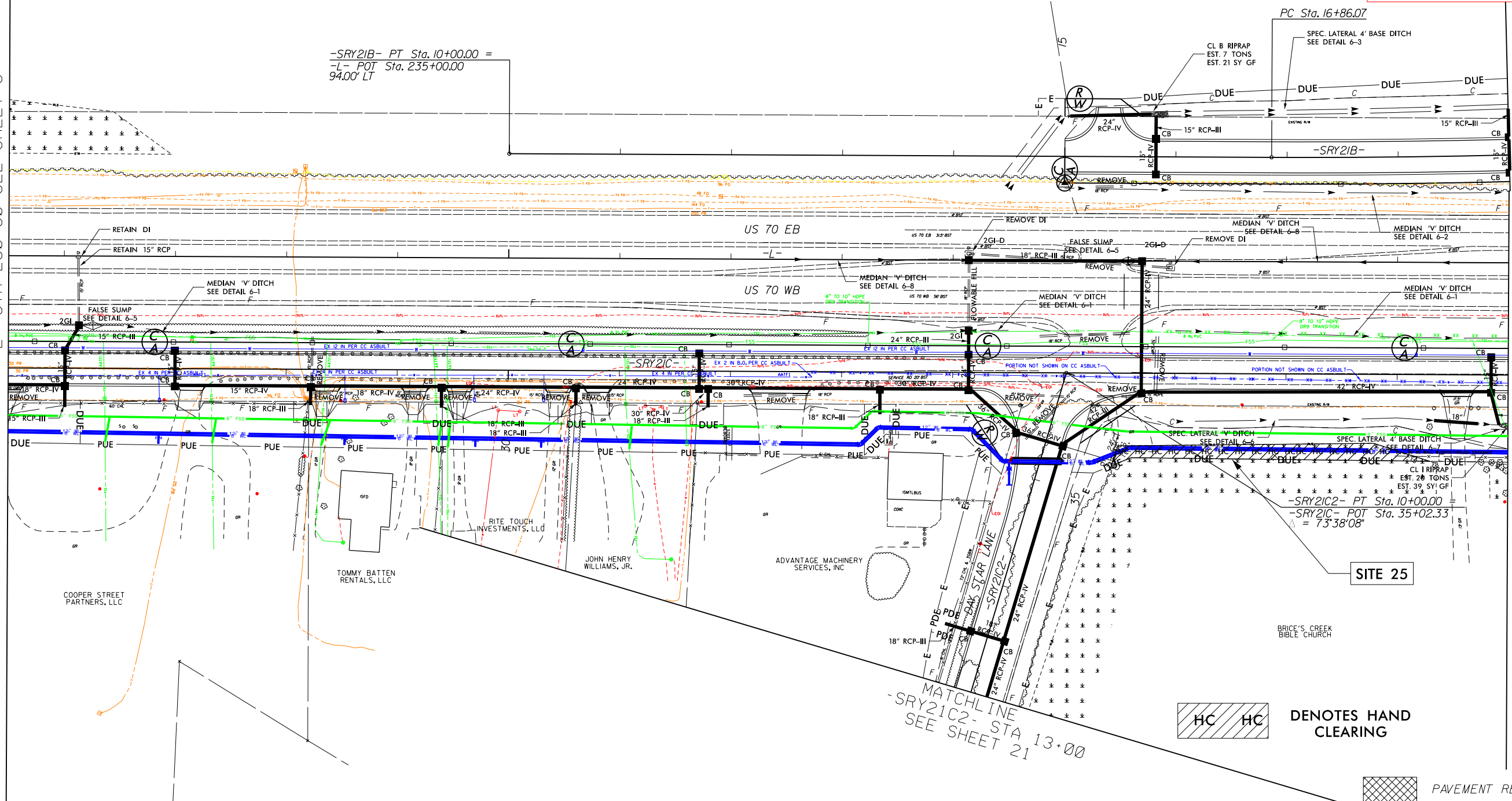
FROM STA. 38+85 -SRY21C- TO STA. 39+00 -SRY21C- RT



FROM STA. 237+00 -L- TO STA. 244+00 -L- MED



MATCHLINE -L- STA 230+50 SEE SHEET 5



MATCHLINE -SRY21B- STA 244+00 SEE SHEET 7

FOR -SRY21B- PROFILE SEE SHEETS 66  
 FOR -SRY21C- PROFILE SEE SHEET 68  
 FOR -SRY21C2- PROFILE SEE SHEET 670  
 SEE SHEET 3A-1 TO 3A-3 FOR CURVE DATA  
 XREF -SRY21B- CURVE DATA

6/23/16



PROJ. REFERENCE NO.	SHEET NO.
U-5713/R-5777A&B	SRV21C-11

150 140 130 120 110 100 90 80 70 60 50 40 30 20 10 0 10 20 30 40 50 60 70 80 90 100 110 120 130 140 150

**PERMIT DRAWING**  
**SHEET 3 OF 11**  
**DATE: 06-03-2020**

SITE 25

38+00

37+50

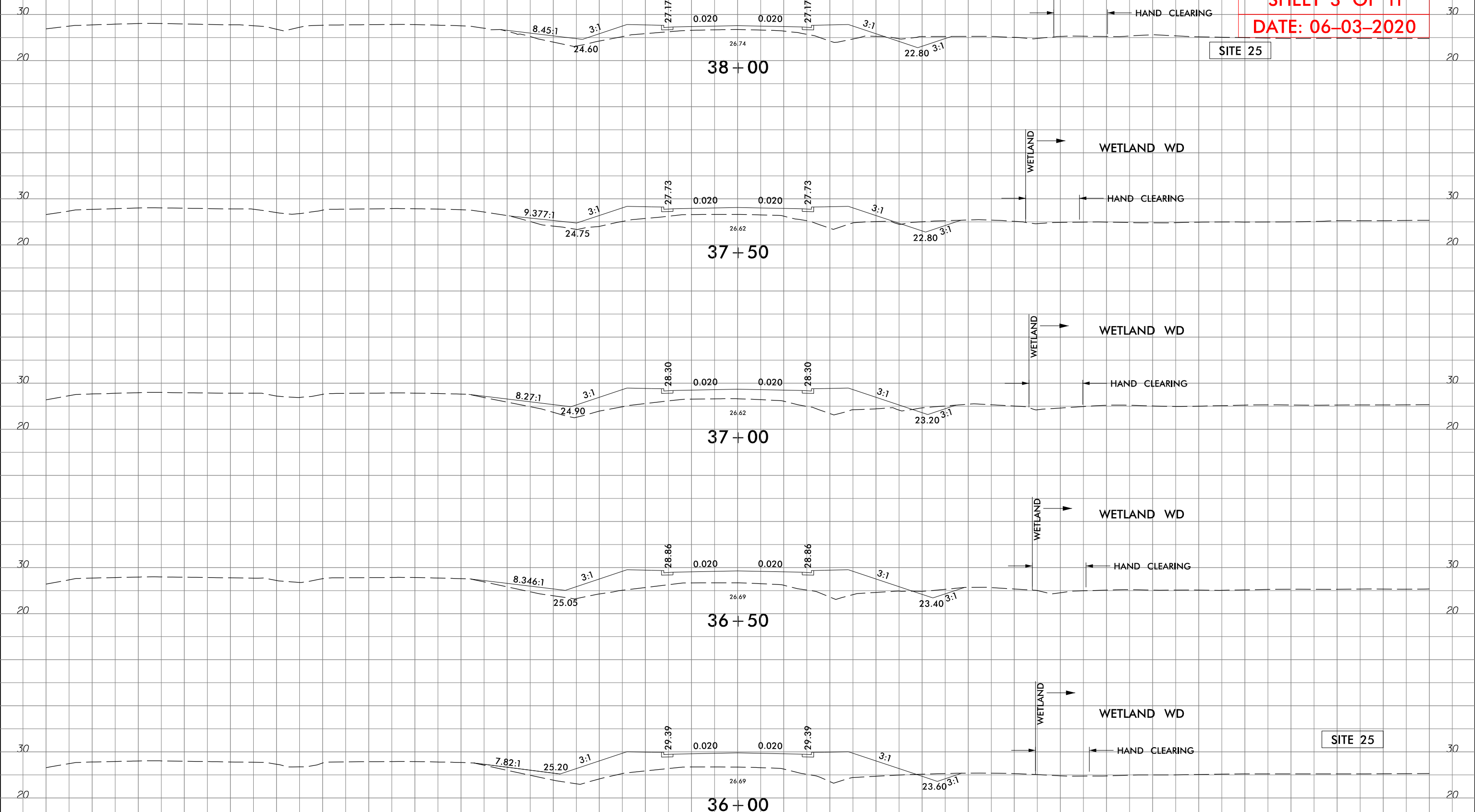
37+00

36+50

36+00

-SRV21C-

SYSTEMS TIME SCHEDULE

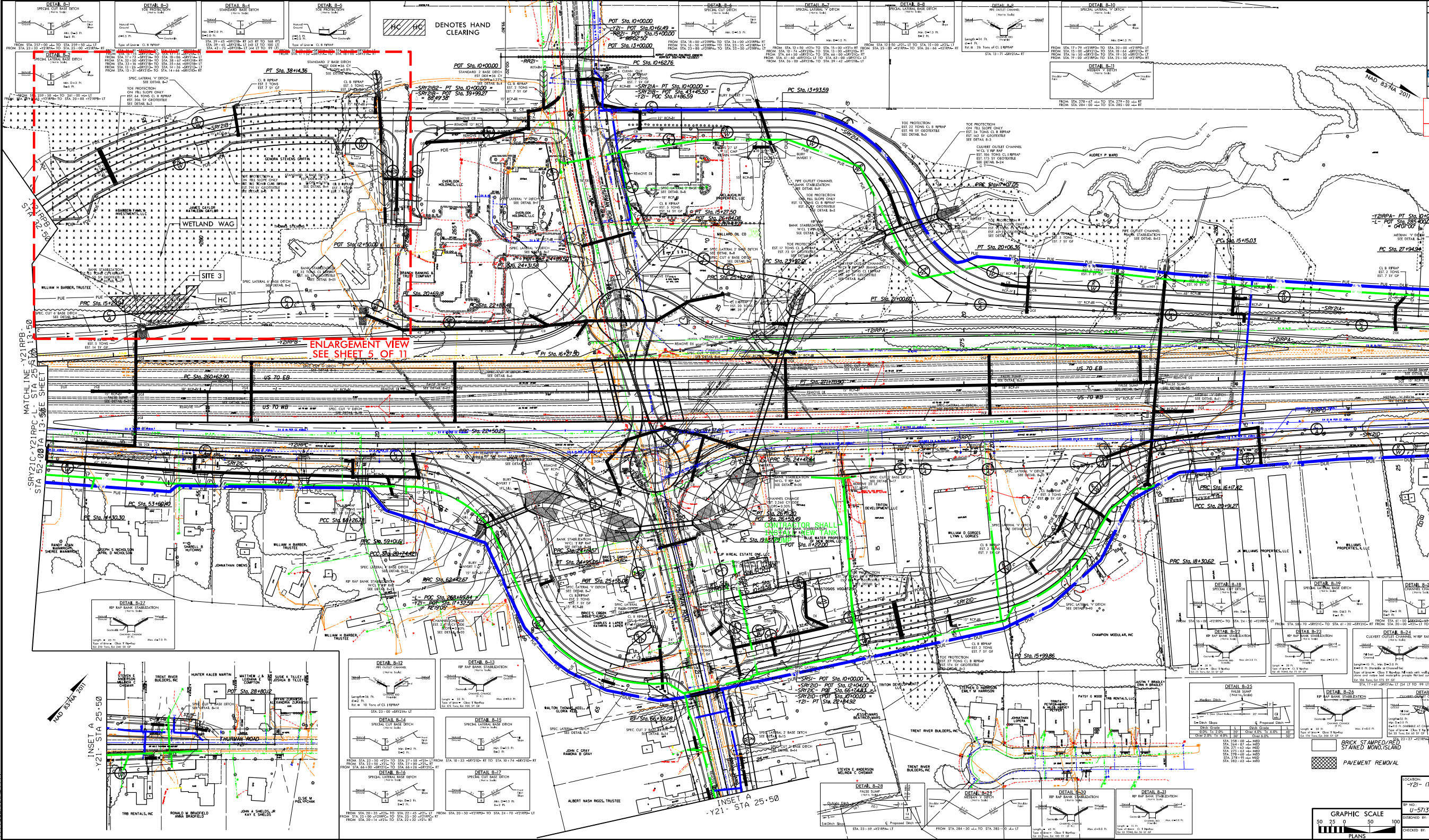


SITE 25



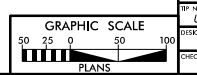
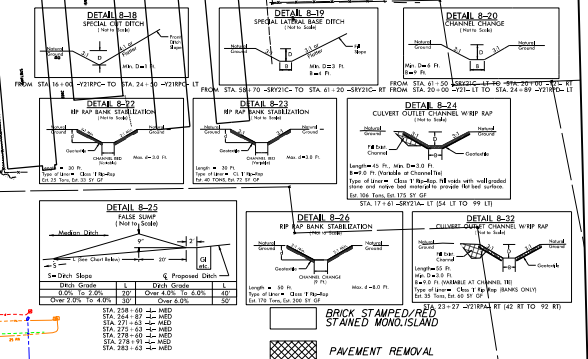
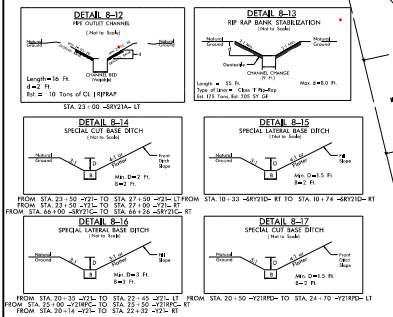
6/2/19

PROJECT REFERENCE NO. U-5713/R-5777 A&B  
 SHEET NO. 8  
 PRELIMINARY PLANS  
 DOCUMENT NOT CONSIDERED FINAL  
 UNLESS ALL SIGNATURES COMPLETED  
 JALOUR BEATTY STV 2,100  
 PERMIT DRAWING  
 SHEET 4 OF 11  
 DATE: 06 + 03-2020



MATCHLINE - Y21RPB - STA 52+00 TO STA 52+50 SEE SHEET 3

MATCHLINE - Y21RPA - STA 26+50 TO STA 27+00 SEE SHEET 9

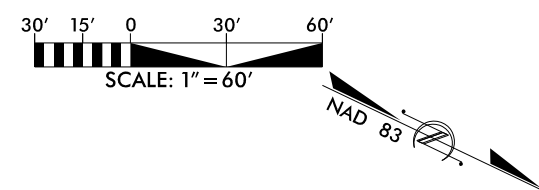


LOCATION: -Y21- (THURMAN RD) / -L-  
 COUNTY: CRAVEN  
 DESIGNED BY: NP DATE: 11/05/19  
 CHECKED BY: JAF DATE: 11/05/19



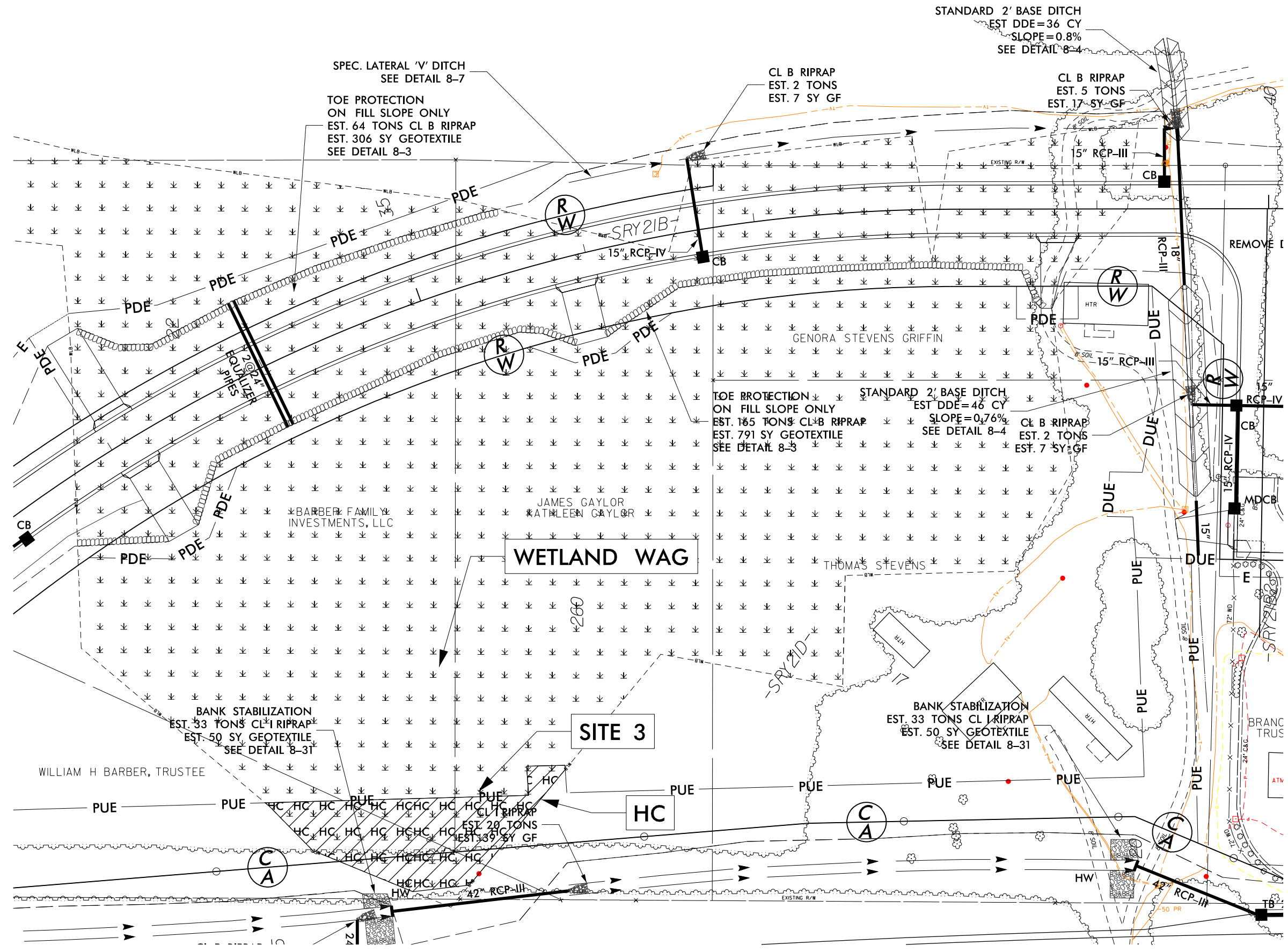
8.17.19  
C:\Users\jgibson\OneDrive\Documents\Projects\2019\20190817\20190817.dwg

HC HC DENOTES HAND CLEARING

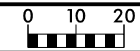


PROJECT REFERENCE NO. U-5713/R-5777 A&B	SHEET NO.
R/W SHEET NO.	
ROADWAY DESIGN ENGINEER	HYDRAULICS ENGINEER
<b>INCOMPLETE PLANS</b> DO NOT USE FOR R/W ACQUISITION	
<b>DOCUMENT NOT CONSIDERED FINAL</b> UNLESS ALL SIGNATURES COMPLETED	

**PERMIT DRAWING**  
**SHEET 5 OF 11**  
**DATE: 06-03-2020**

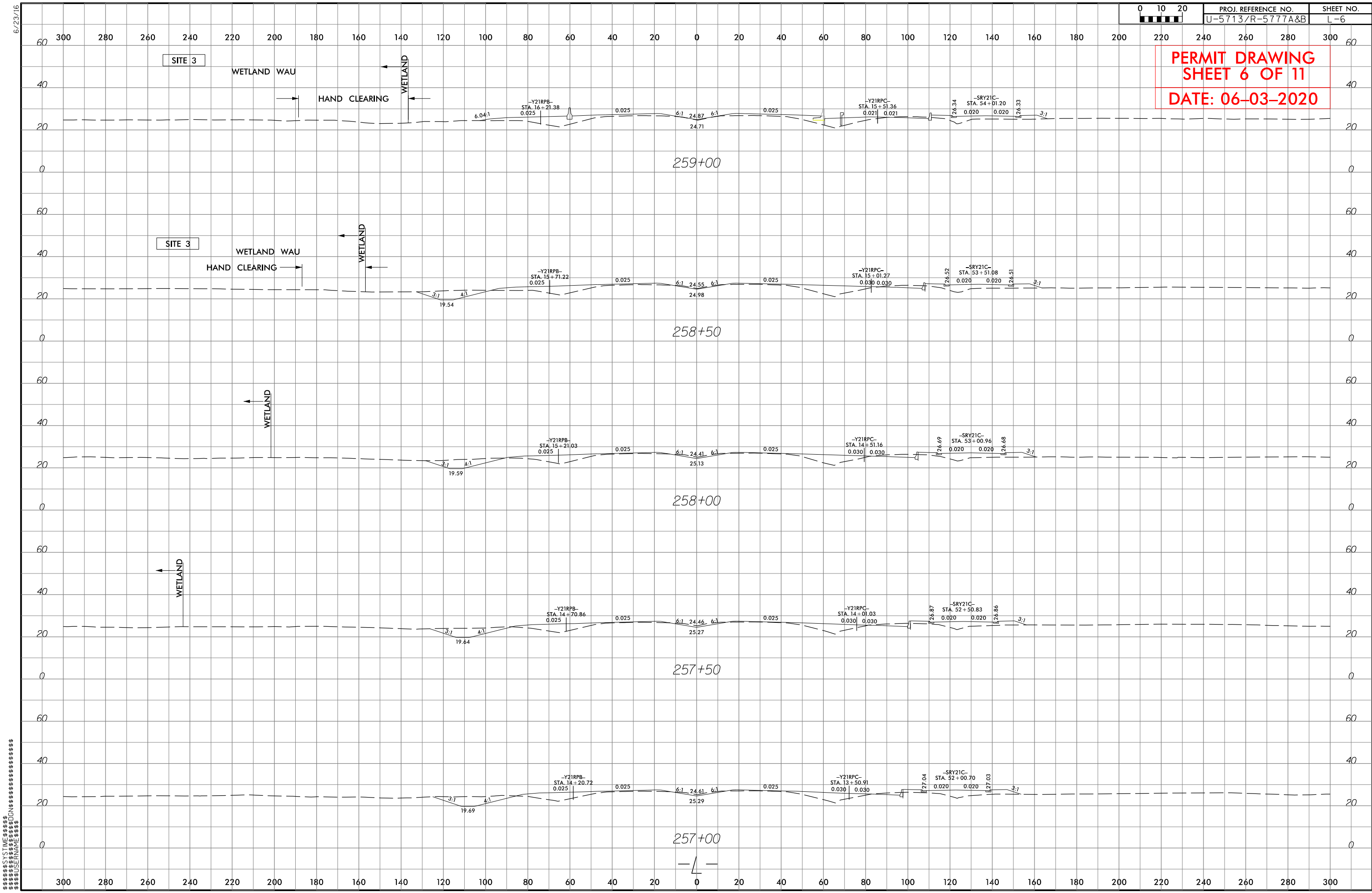


6/23/16



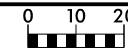
PROJ. REFERENCE NO.	SHEET NO.
U-5713/R-5777A&B	L-6

**PERMIT DRAWING**  
**SHEET 6 OF 11**  
**DATE: 06-03-2020**



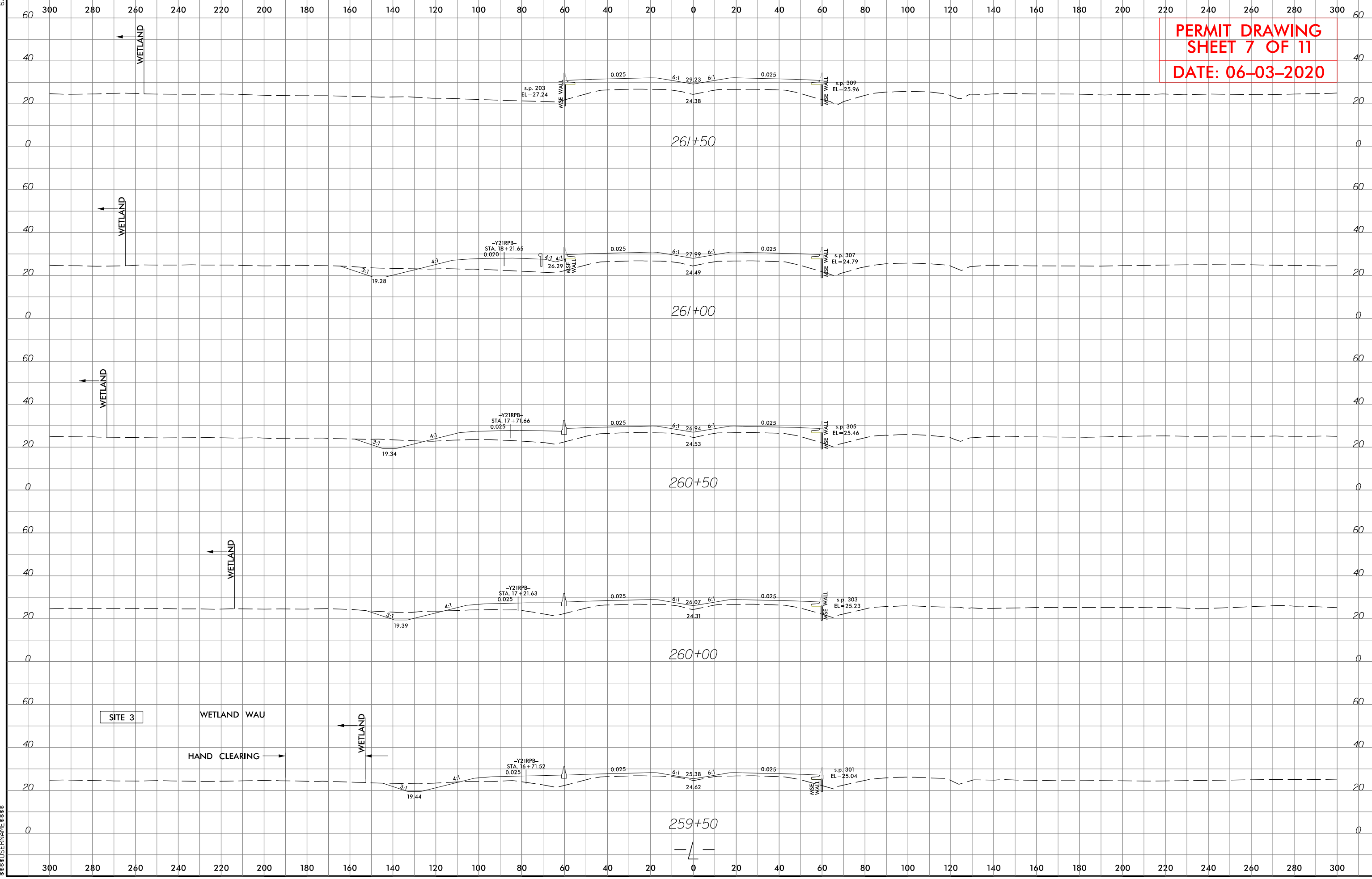
\*\*\*\*\* SYSTEMS TIME \*\*\*\*\*  
 \*\*\*\*\* 02:00 \*\*\*\*\*  
 \*\*\*\*\* 06/23/16 \*\*\*\*\*  
 \*\*\*\*\* 10:00 \*\*\*\*\*  
 \*\*\*\*\* \*\*\*\*\*

6/23/16



PROJ. REFERENCE NO.	SHEET NO.
U-5713/R-5777A&B	L-7

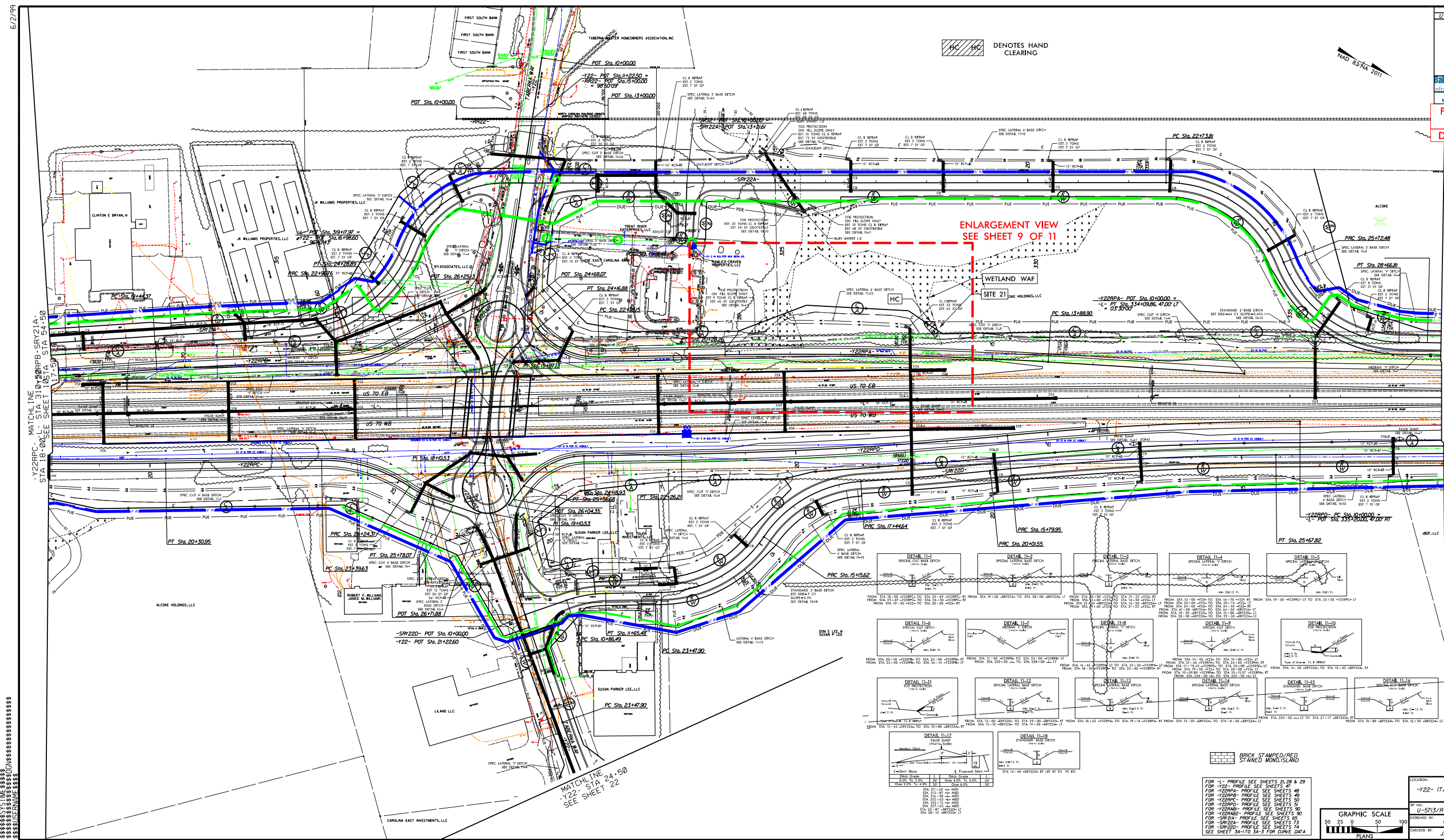
**PERMIT DRAWING**  
**SHEET 7 OF 11**  
**DATE: 06-03-2020**



\*\*\*\*\* SYSTEMS TIME \*\*\*\*\*  
 \*\*\*\*\* BY \*\*\*\*\*  
 \*\*\*\*\* DATE \*\*\*\*\*



6/2/19



PROJECT REFERENCE NO. U-5713/R-5777 A&B SHEET NO. 11

ROADWAY DESIGN ENGINEER: HIRSHKALE ENGINEER

PRELIMINARY PLANS DOCUMENT NOT CONSIDERED FINAL UNLESS ALL SIGNATURES COMPLETED

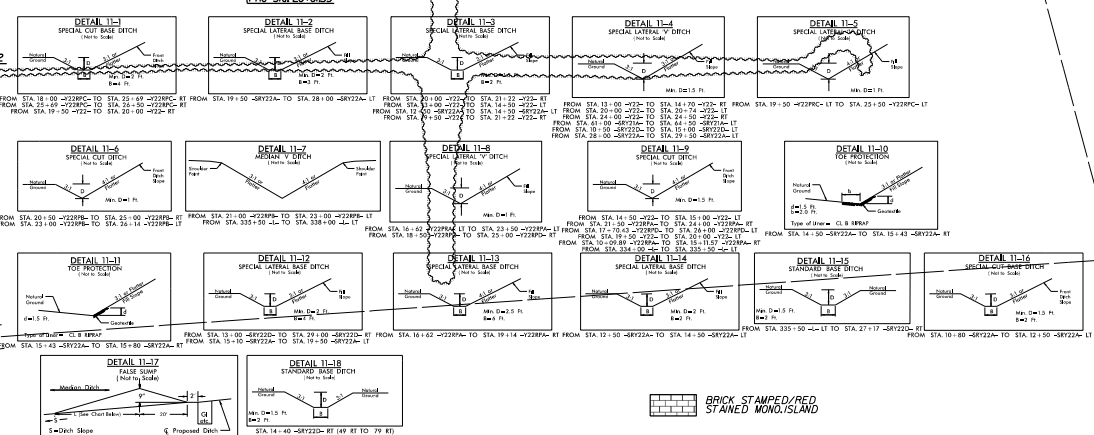
Salour Beatty STV 7,100

PERMIT DRAWING SHEET 8 OF 11 DATE: 06-03-2020

HC HC DENOTES HAND CLEARING

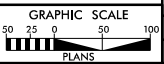


ENLARGEMENT VIEW SEE SHEET 9 OF 11



BRICK STAMPED/RED STAINED MONO-ISLAND

FOR "L" PROFILE SEE SHEETS 21-28 & 29  
 FOR "Y22" PROFILE SEE SHEETS 47  
 FOR "Y22RPA" PROFILE SEE SHEETS 48  
 FOR "Y22RPA" PROFILE SEE SHEETS 49  
 FOR "Y22RPA" PROFILE SEE SHEETS 50  
 FOR "Y22RPA" PROFILE SEE SHEETS 51  
 FOR "Y22RPA" PROFILE SEE SHEETS 52  
 FOR "Y22RPA" PROFILE SEE SHEETS 53  
 FOR "Y22RPA" PROFILE SEE SHEETS 54  
 FOR "Y22RPA" PROFILE SEE SHEETS 55  
 FOR "Y22RPA" PROFILE SEE SHEETS 56  
 FOR "Y22RPA" PROFILE SEE SHEETS 57  
 FOR "Y22RPA" PROFILE SEE SHEETS 58  
 FOR "Y22RPA" PROFILE SEE SHEETS 59  
 FOR "Y22RPA" PROFILE SEE SHEETS 60  
 FOR "Y22RPA" PROFILE SEE SHEETS 61  
 FOR "Y22RPA" PROFILE SEE SHEETS 62  
 FOR "Y22RPA" PROFILE SEE SHEETS 63  
 FOR "Y22RPA" PROFILE SEE SHEETS 64  
 FOR "Y22RPA" PROFILE SEE SHEETS 65  
 FOR "Y22RPA" PROFILE SEE SHEETS 66  
 FOR "Y22RPA" PROFILE SEE SHEETS 67  
 FOR "Y22RPA" PROFILE SEE SHEETS 68  
 FOR "Y22RPA" PROFILE SEE SHEETS 69  
 FOR "Y22RPA" PROFILE SEE SHEETS 70  
 FOR "Y22RPA" PROFILE SEE SHEETS 71  
 FOR "Y22RPA" PROFILE SEE SHEETS 72  
 FOR "Y22RPA" PROFILE SEE SHEETS 73  
 FOR "Y22RPA" PROFILE SEE SHEETS 74  
 FOR "Y22RPA" PROFILE SEE SHEETS 75  
 FOR "Y22RPA" PROFILE SEE SHEETS 76  
 FOR "Y22RPA" PROFILE SEE SHEETS 77  
 FOR "Y22RPA" PROFILE SEE SHEETS 78  
 FOR "Y22RPA" PROFILE SEE SHEETS 79  
 FOR "Y22RPA" PROFILE SEE SHEETS 80  
 FOR "Y22RPA" PROFILE SEE SHEETS 81  
 FOR "Y22RPA" PROFILE SEE SHEETS 82  
 FOR "Y22RPA" PROFILE SEE SHEETS 83  
 FOR "Y22RPA" PROFILE SEE SHEETS 84  
 FOR "Y22RPA" PROFILE SEE SHEETS 85  
 FOR "Y22RPA" PROFILE SEE SHEETS 86  
 FOR "Y22RPA" PROFILE SEE SHEETS 87  
 FOR "Y22RPA" PROFILE SEE SHEETS 88  
 FOR "Y22RPA" PROFILE SEE SHEETS 89  
 FOR "Y22RPA" PROFILE SEE SHEETS 90  
 FOR "Y22RPA" PROFILE SEE SHEETS 91  
 FOR "Y22RPA" PROFILE SEE SHEETS 92  
 FOR "Y22RPA" PROFILE SEE SHEETS 93  
 FOR "Y22RPA" PROFILE SEE SHEETS 94  
 FOR "Y22RPA" PROFILE SEE SHEETS 95  
 FOR "Y22RPA" PROFILE SEE SHEETS 96  
 FOR "Y22RPA" PROFILE SEE SHEETS 97  
 FOR "Y22RPA" PROFILE SEE SHEETS 98  
 FOR "Y22RPA" PROFILE SEE SHEETS 99  
 FOR "Y22RPA" PROFILE SEE SHEETS 100



LOCATION: -Y22- (TABERNA WAY) / -L-

PROJECT NO. U-5713/R-5777 A&B COUNTY: CRAVEN

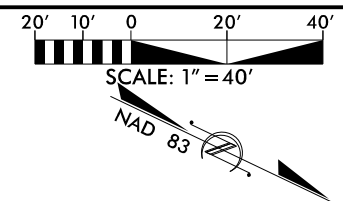
DESIGNED BY: NP DATE: 11/05/19

CHECKED BY: JAF DATE: 11/05/19

6/2/19



8.17/99  
C:\Users\jgibson\OneDrive\Documents\Projects\2020\06\03\20200603\20200603.dwg



PROJECT REFERENCE NO. U-5713/R-5777 A&B	SHEET NO.
RW SHEET NO.	
ROADWAY DESIGN ENGINEER	HYDRAULICS ENGINEER
<b>INCOMPLETE PLANS</b> DO NOT USE FOR A/W ACQUISITION	

DOCUMENT NOT CONSIDERED FINAL  
UNLESS ALL SIGNATURES COMPLETED

**PERMIT DRAWING**  
**SHEET 9 OF 11**  
**DATE: 06-03-2020**

**HC HC** DENOTES HAND CLEARING

