

See Sheet 1A For Index of Sheets
See Sheet 1B For Standard Symbology Sheet

STATE OF NORTH CAROLINA
DIVISION OF HIGHWAYS

**BUFFER DRAWING
SHEET 1 OF 7**

DATE: 11/28/2023

STATE	STATE PROJECT REFERENCE NO.	SHEET NO.	TOTAL SHEETS
N.C.	R-5777C	1	
STATE PROJ. NO.	F.A. PROJ. NO.	DESCRIPTION	
44648.3.4	N/A	DESIGN-BUILD	

CRAVEN COUNTY

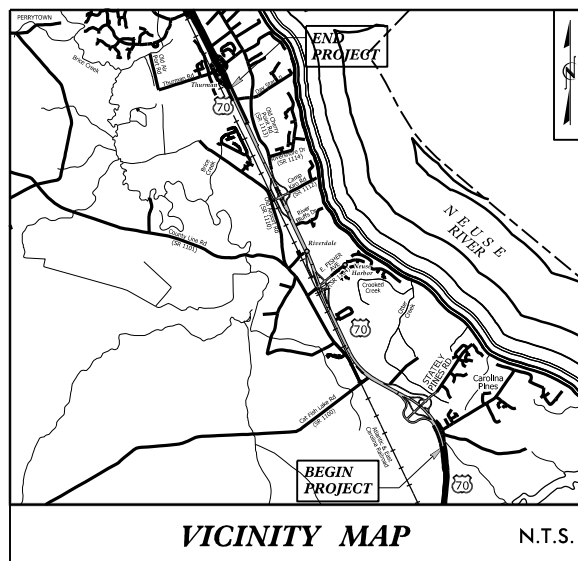
LOCATION: U.S. 70 FROM THE HAVELOCK BYPASS TO EAST OF S.R. 1116 (THURMAN ROAD)

TYPE OF WORK: GRADING, DRAINAGE, PAVING, SIGNING, ITS AND STRUCTURES

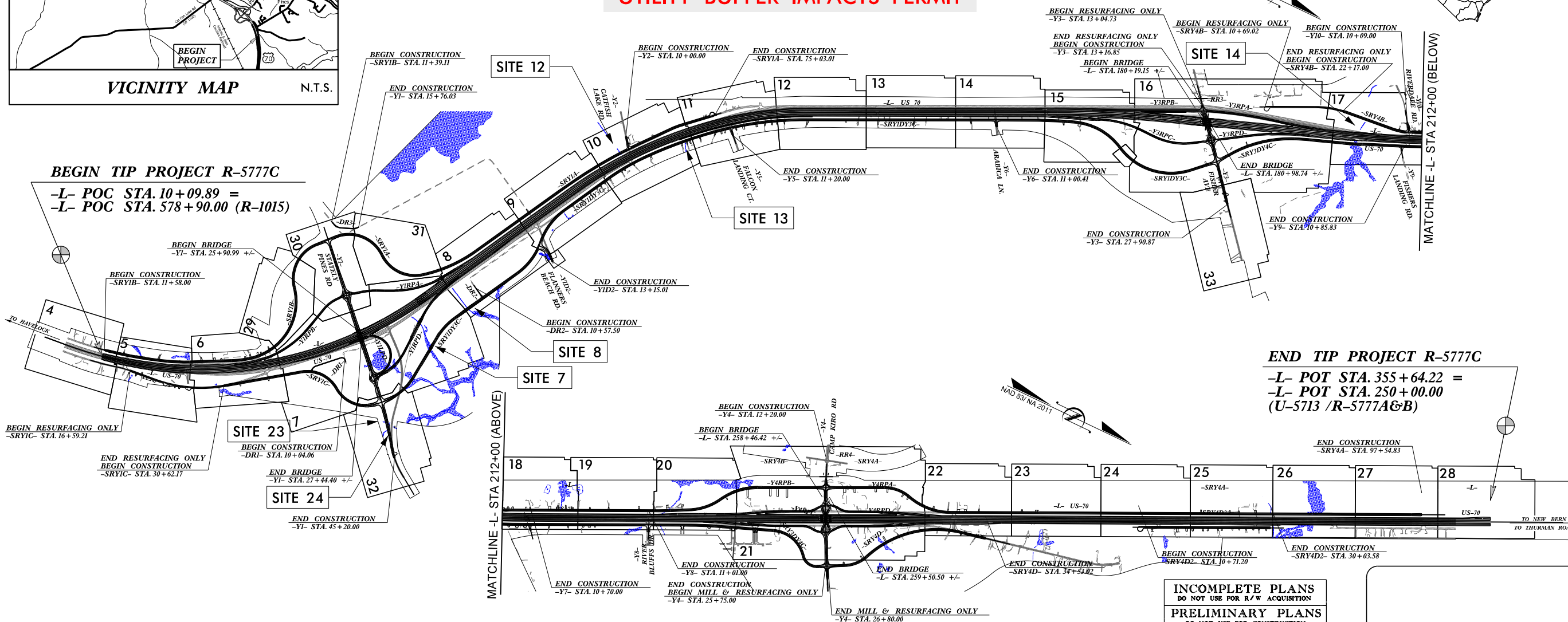
UTILITY BUFFER IMPACTS PERMIT

TIP PROJECT: R-5777C

CONTRACT: C204695



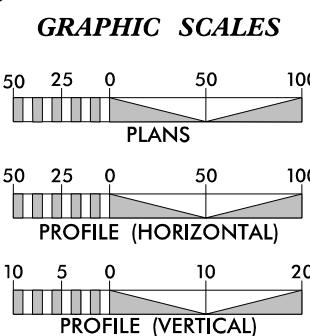
BEGIN TIP PROJECT R-5777C
-L- POC STA. 10+09.89 =
-L- POC STA. 578+90.00 (R-1015)



END TIP PROJECT R-5777C
-L- POT STA. 355+64.22 =
-L- POT STA. 250+00.00
(U-5713 /R-5777A&B)

THIS PROJECT IS WITHIN THE MUNICIPAL BOUNDARY OF THE CITY OF NEW BERN
CLEARING ON THIS PROJECT SHALL BE PERFORMED TO THE LIMITS ESTABLISHED BY METHOD III.
THIS IS A CONTROLLED ACCESS PROJECT WITH ACCESS BEING LIMITED TO INTERCHANGES.

INCOMPLETE PLANS
DO NOT USE FOR R/W ACQUISITION
PRELIMINARY PLANS
DO NOT USE FOR CONSTRUCTION
DOCUMENT NOT CONSIDERED FINAL
UNLESS ALL SIGNATURES COMPLETED



DESIGN DATA

ADT 2019 =	31,800
ADT 2045 =	41,800
K =	9%
D =	55%
T =	8%*
V =	75 MPH
* (TTST=3%+DUAL 5%)	
FUNC. CLASSIFICATION =	INTERSTATE STATEWIDE TIER

PROJECT LENGTH

LENGTH ROADWAY TIP PROJECT R-5777C =	6.486 MILES
LENGTH STRUCTURE TIP PROJECT R-5777C =	0.058 MILES
TOTAL LENGTH OF TIP PROJECT R-5777C =	6.544 MILES

NCDOT CONTACT: BYRON KYLE
NCDOT - DESIGN-BUILD UNIT

PLANS PREPARED FOR THE NCDOT BY:

Balfour Beatty

2018 STANDARD SPECIFICATIONS

RIGHT OF WAY DATE:
JANUARY 17, 2023

LETTING DATE:
JANUARY 17, 2023

NC LICENSE NUMBER F-0991
900 W TRADE ST STE 715,
CHARLOTTE, NC 28202

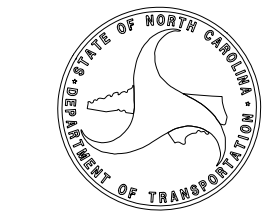
J. ADAM FREEMAN, PE
PROJECT ENGINEER

NARONG PHAL, PE
PROJECT DESIGN ENGINEER

HYDRAULICS ENGINEER

SIGNATURE: _____ P.E.
ROADWAY DESIGN ENGINEER

SIGNATURE: _____ P.E.



11/28/2023 R-5777C-Hyd_prm_buf_Util_psh_01.dgn inarvey

6/2/99

1/28/2023
R-5777C_Hgd.prm_bur_Unit_07.dgn

BUFFER DRAWING
SHEET 2 OF 7
DATE: 11/28/2023

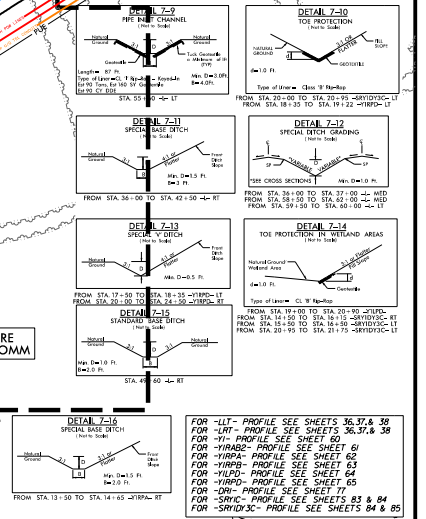
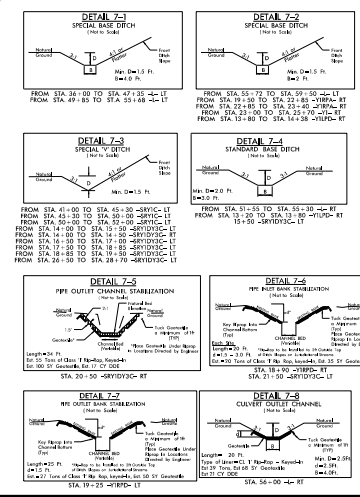
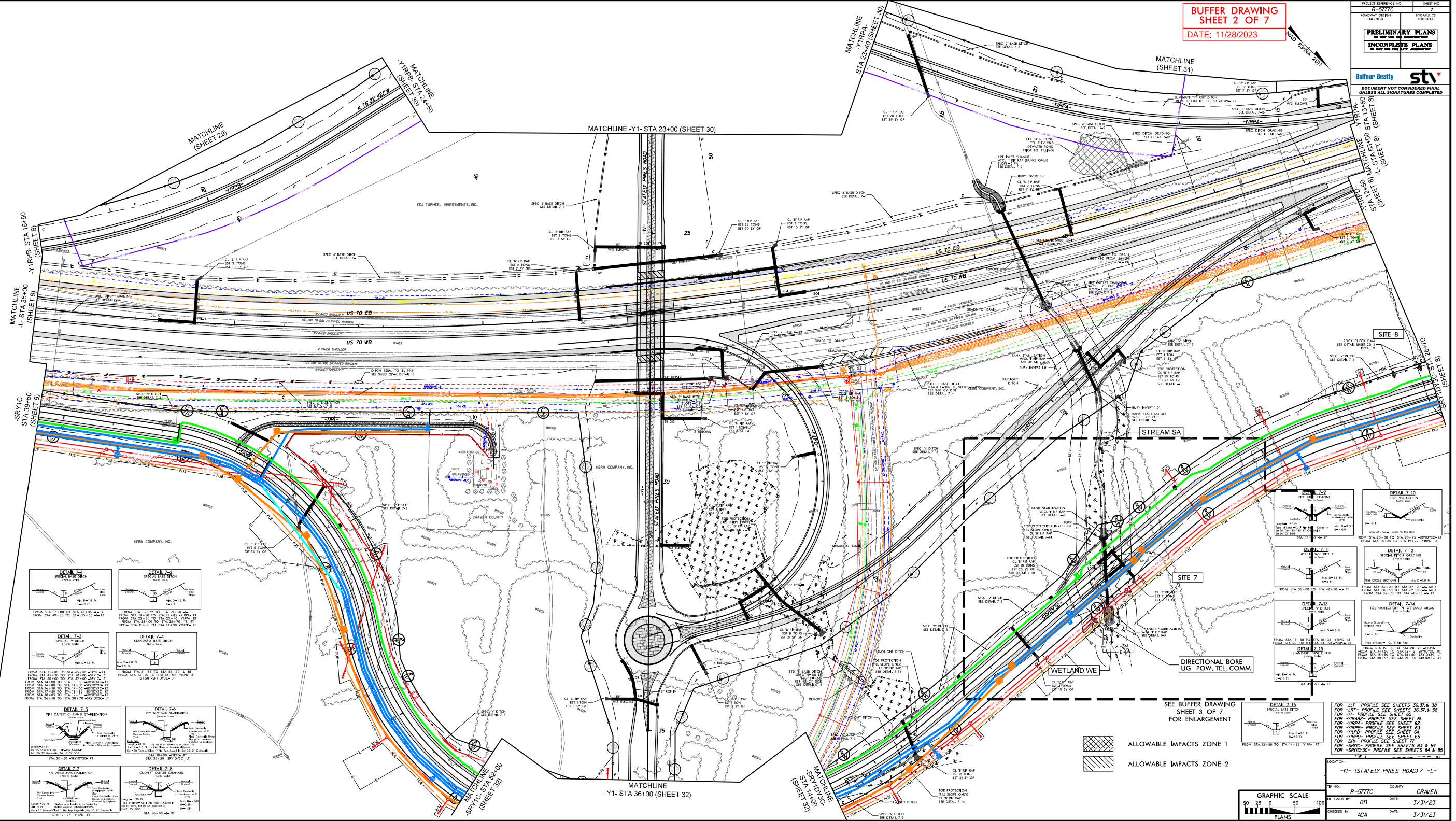
PROJECT REFERENCE NO.	R-5777C	SHEET NO.	7
ROADWAY DESIGN ENGINEER	HORVATH	CHECKED BY	ACA
DATE	11/28/2023	DATE	3/31/23

PRELIMINARY PLANS
DO NOT USE FOR CONSTRUCTION

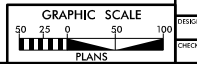
INCOMPLETE PLANS
DO NOT USE FOR THE FIELD

Balfour Beatty **st**

DOCUMENT NOT CONSIDERED FINAL
UNLESS ALL SIGNATURES COMPLETED



ALLOWABLE IMPACTS ZONE 1
ALLOWABLE IMPACTS ZONE 2



FOR -LIT- PROFILE SEE SHEETS 36.57 & 58
FOR -LRT- PROFILE SEE SHEETS 36.57 & 58
FOR -HRA- PROFILE SEE SHEET 60
FOR -HRA- PROFILE SEE SHEET 60
FOR -HRA- PROFILE SEE SHEET 60
FOR -HRA- PROFILE SEE SHEET 60
FOR -HRA- PROFILE SEE SHEET 60
FOR -HRA- PROFILE SEE SHEETS 63 & 64
FOR -SRV-C- PROFILE SEE SHEETS 63 & 64

LOCATION: -Y1- (STATELY PINES ROAD) / -L-
BY: R-5777C COUNTY: CRIVEN
CHECKED BY: BB DATE: 3/31/23
CHECKED BY: ACA DATE: 3/31/23

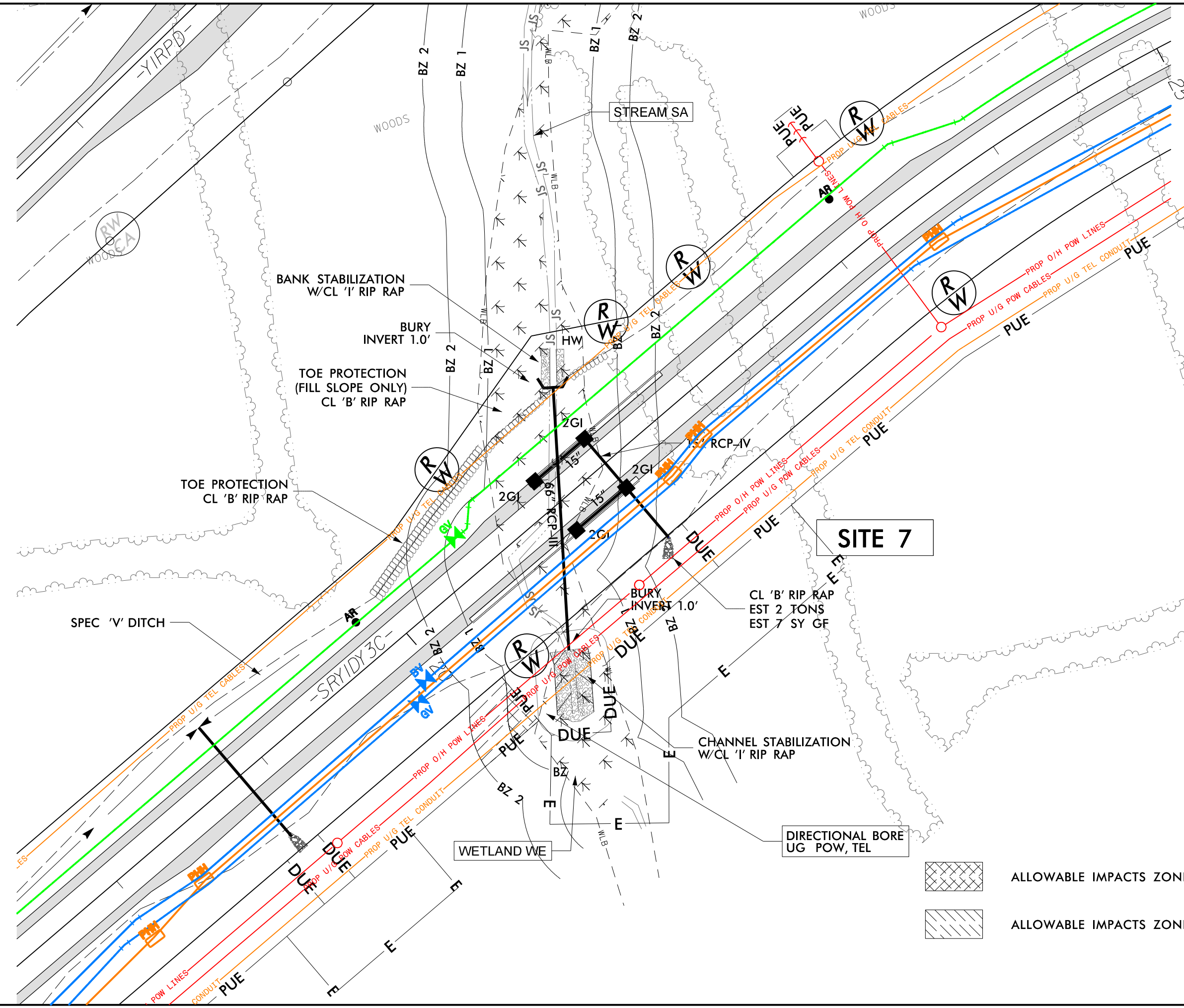
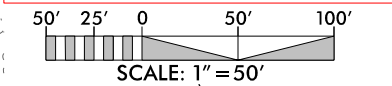
8/17/99

PROJECT REFERENCE NO. R-5777C	SHEET NO.
RW SHEET NO.	
ROADWAY DESIGN ENGINEER	HYDRAULICS ENGINEER
INCOMPLETE PLANS DO NOT USE FOR R/W ACQUISITION	

DOCUMENT NOT CONSIDERED FINAL
UNLESS ALL SIGNATURES COMPLETED

BUFFER DRAWING SHEET 3 OF 7

DATE: 11/28/2023



- ALLOWABLE IMPACTS ZONE 1
- ALLOWABLE IMPACTS ZONE 2

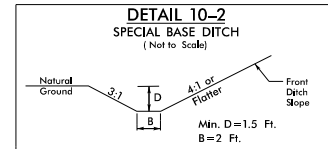
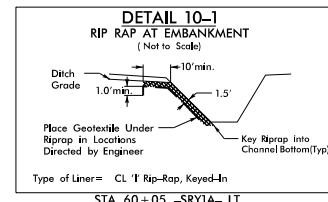
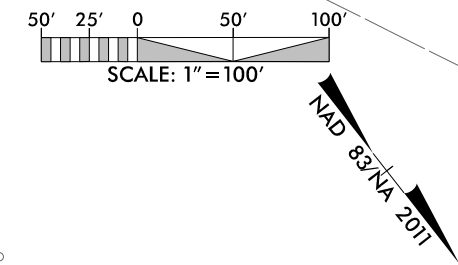
I:\28/2023\R-5777C-Hyd.prm_buf_Utl.psh_07-1_View.mxd

PRELIMINARY PLANS
DO NOT USE FOR CONSTRUCTION

INCOMPLETE PLANS
DO NOT USE FOR A/W ACQUISITION

BUFFER DRAWING
SHEET 5 OF 7

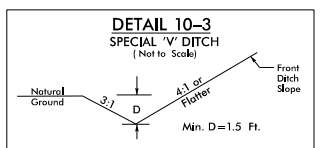
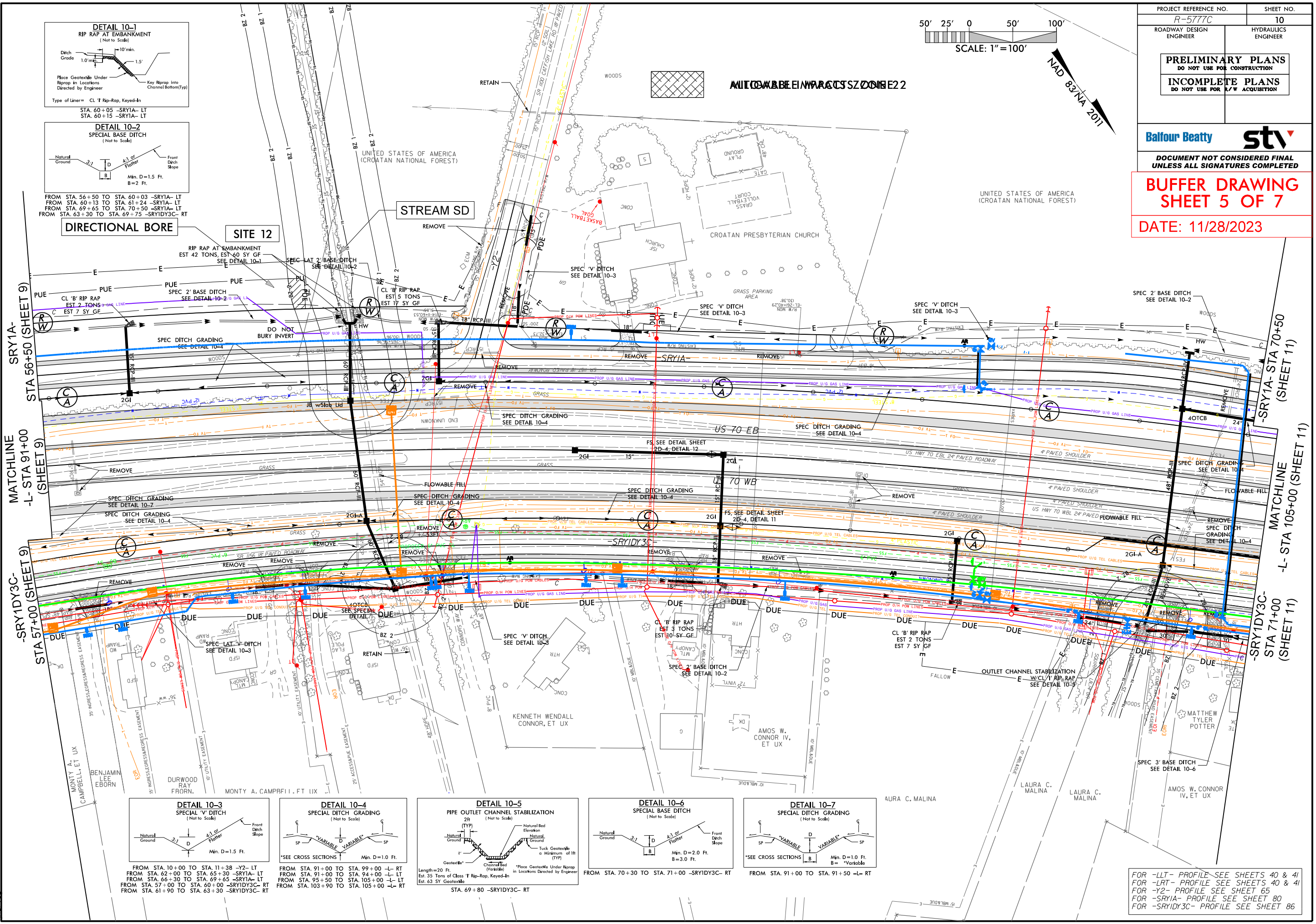
DATE: 11/28/2023



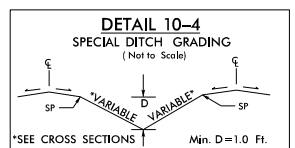
FROM STA. 56+50 TO STA. 60+03 -SR1A- LT
FROM STA. 60+13 TO STA. 61+24 -SR1A- LT
FROM STA. 69+65 TO STA. 70+50 -SR1A- LT
FROM STA. 63+30 TO STA. 69+75 -SR1DY3C- RT

DIRECTIONAL BORE

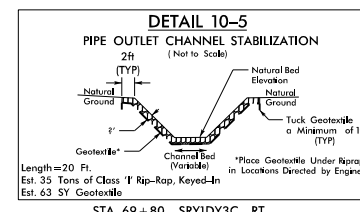
SITE 12



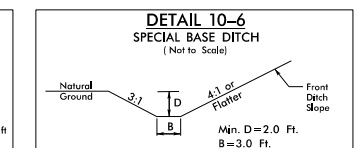
FROM STA. 10+00 TO STA. 11+38 -Y2- LT
FROM STA. 62+00 TO STA. 65+30 -SR1A- LT
FROM STA. 66+30 TO STA. 69+65 -SR1A- LT
FROM STA. 57+00 TO STA. 60+00 -SR1DY3C- RT
FROM STA. 61+90 TO STA. 63+30 -SR1DY3C- RT



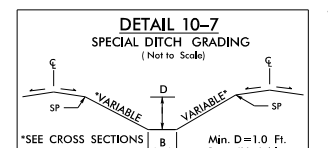
FROM STA. 91+00 TO STA. 99+00 -L- RT
FROM STA. 91+00 TO STA. 94+00 -L- LT
FROM STA. 95+50 TO STA. 105+00 -L- LT
FROM STA. 103+90 TO STA. 105+00 -L- RT



STA. 69+80 -SR1DY3C- RT



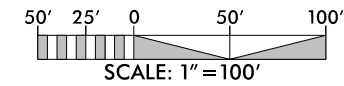
FROM STA. 70+30 TO STA. 71+00 -SR1DY3C- RT



FROM STA. 91+00 TO STA. 91+50 -L- RT

11/28/2023 R-5777C-Hyd_prm_buf_Utl.pst_10.dgn

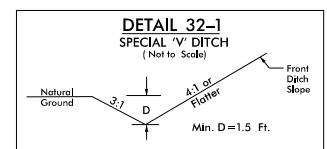
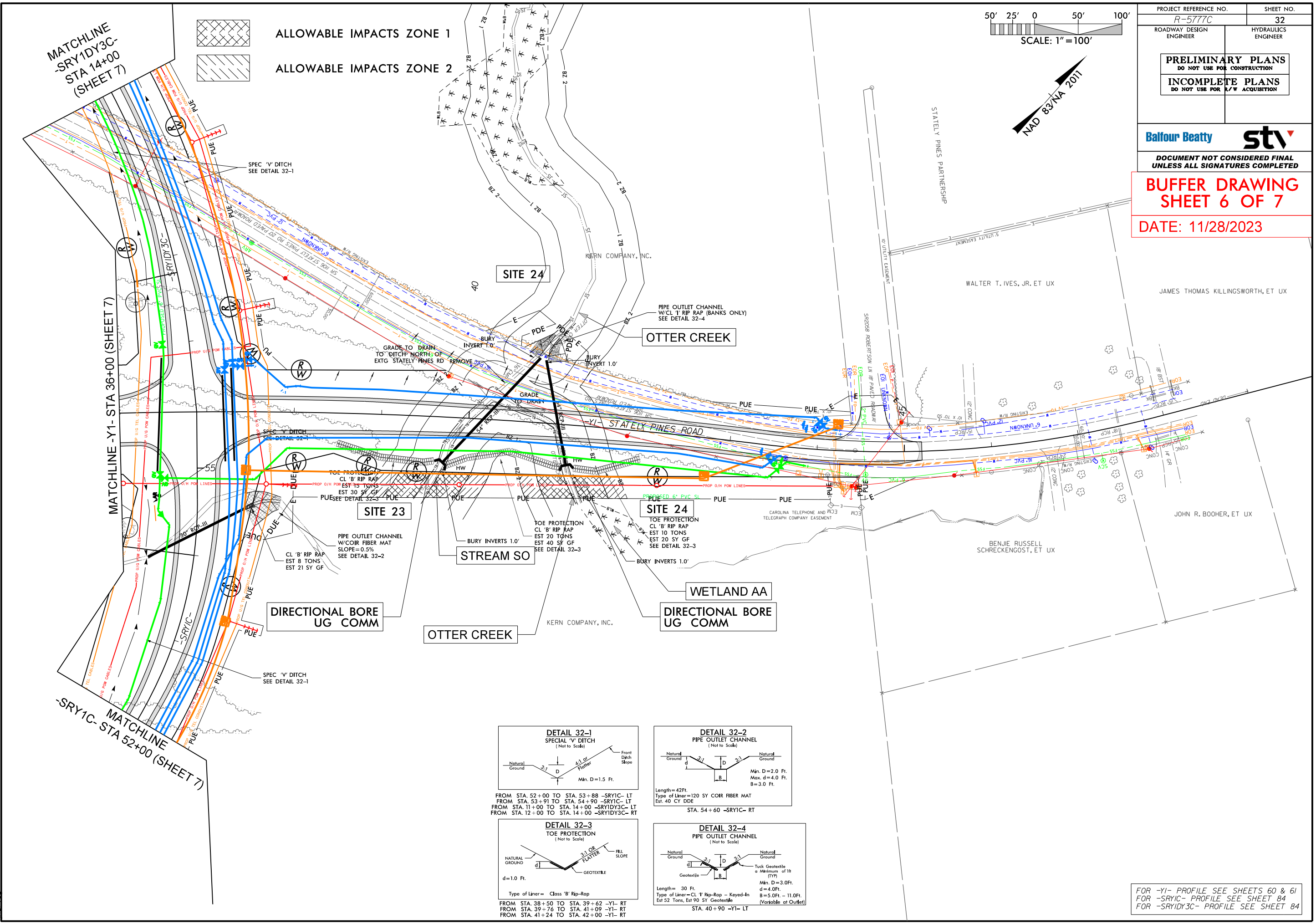
FOR -LLT- PROFILE SEE SHEETS 40 & 41
FOR -LRT- PROFILE SEE SHEETS 40 & 41
FOR -Y2- PROFILE SEE SHEET 65
FOR -SR1A- PROFILE SEE SHEET 80
FOR -SR1DY3C- PROFILE SEE SHEET 86



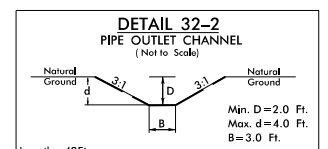
PROJECT REFERENCE NO. R-5777C	SHEET NO. 32
ROADWAY DESIGN ENGINEER	HYDRAULICS ENGINEER
PRELIMINARY PLANS DO NOT USE FOR CONSTRUCTION	
INCOMPLETE PLANS DO NOT USE FOR A/W ACQUISITION	

Balfour Beatty **stv**
DOCUMENT NOT CONSIDERED FINAL
UNLESS ALL SIGNATURES COMPLETED

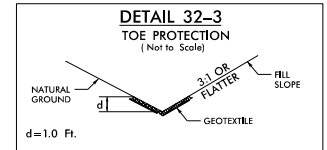
BUFFER DRAWING
SHEET 6 OF 7
DATE: 11/28/2023



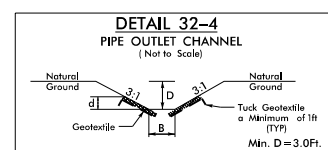
FROM STA. 52+00 TO STA. 53+88 -SR1C- LT
FROM STA. 53+91 TO STA. 54+90 -SR1C- LT
FROM STA. 11+00 TO STA. 14+00 -SR1DY3C- LT
FROM STA. 12+00 TO STA. 14+00 -SR1DY3C- RT



Length=42 Ft.
Type of Liner=120 SY COIR FIBER MAT
Est. 40 CY DDE
STA. 54+60 -SR1C- RT



Type of Liner= Class 'B' Rip-Rap
FROM STA. 38+50 TO STA. 39+62 -Y1- RT
FROM STA. 39+76 TO STA. 41+09 -Y1- RT
FROM STA. 41+24 TO STA. 42+00 -Y1- RT



Length= 30 Ft.
Type of Liner=CL 1' Rip-Rap - Keyed-In
Est 52 Tons, Est 90 SY Geotextile
STA. 40+90 -Y1- LT

11/28/2023 R-5777C-Hyd.prm_buf_Utl1.pst_32.dgn

FOR -Y1- PROFILE SEE SHEETS 60 & 61
FOR -SR1C- PROFILE SEE SHEET 84
FOR -SR1DY3C- PROFILE SEE SHEET 84

