

09/20/2023
 CONTRACT: C204825
 TIP PROJECT: R-2829B
 SYSTEMS
 DGN
 US
 SERNAME

TIP PROJECT: R-2829B

CONTRACT: C204825

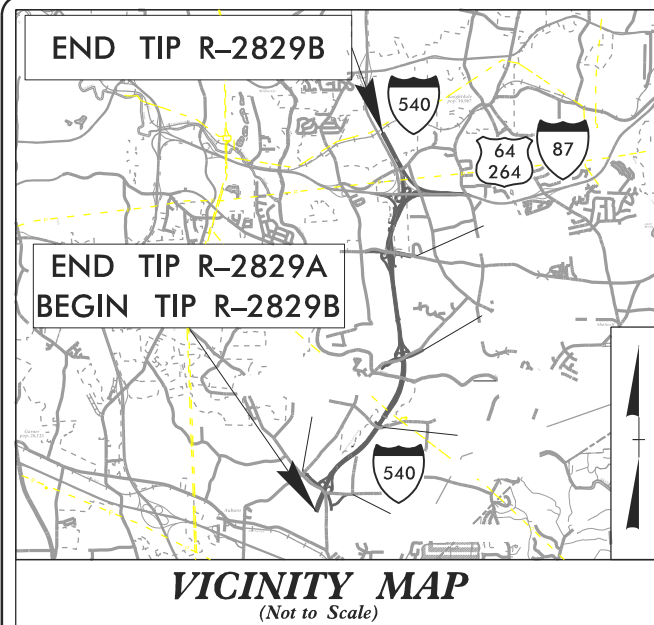
STATE OF NORTH CAROLINA
DIVISION OF HIGHWAYS

WAKE COUNTY

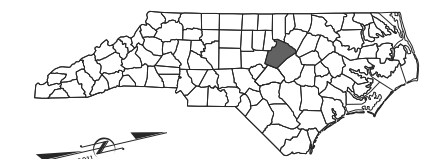
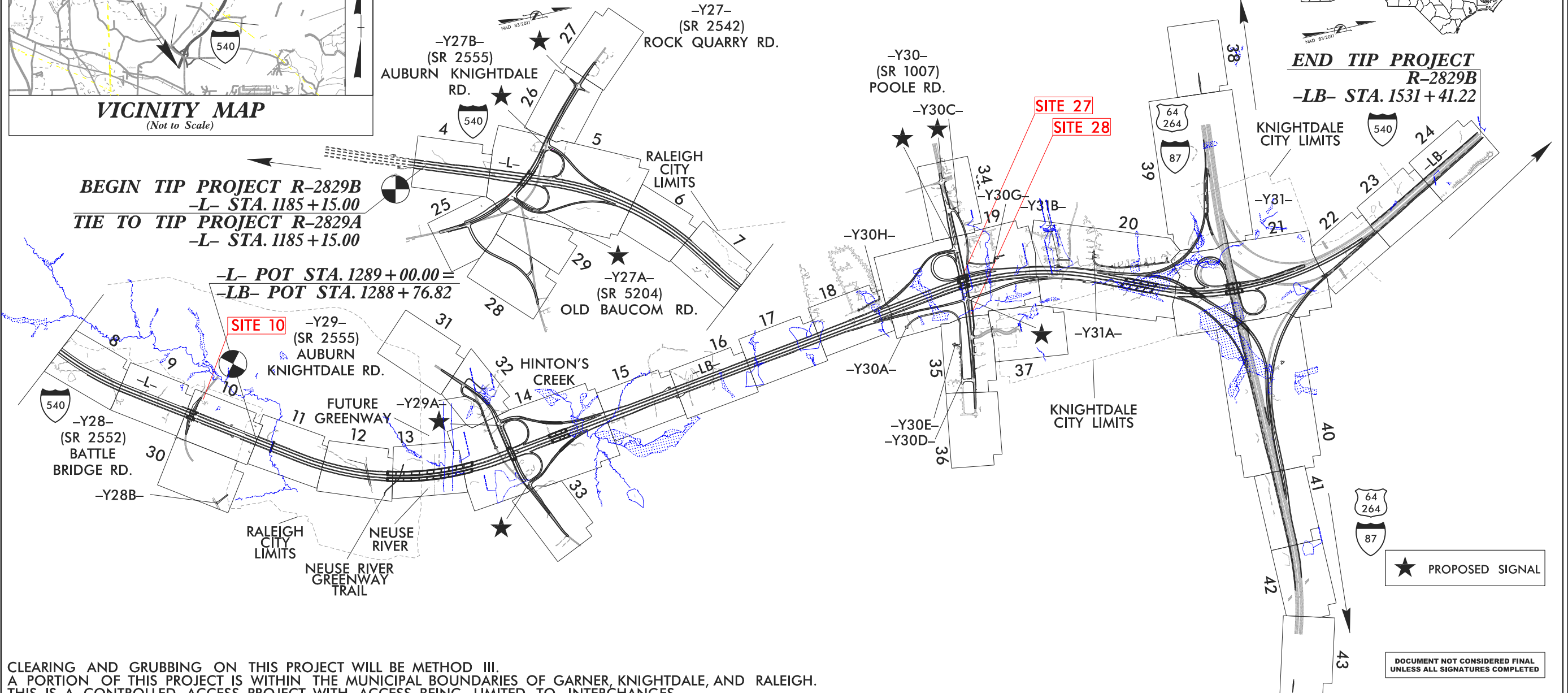
**BUFFER UTILITY
PERMIT DRAWING
SHEET 1 OF 8**

**UTILITY
RIPARIAN BUFFER
IMPACTS PERMIT**

STATE	STATE PROJECT REFERENCE NO.	SHEET NO.	TOTAL SHEETS
N.C.	R-2829B	1	
STATE PROJ. NO.	F.A. PROJ. NO.	DESCRIPTION	
35517.3.TA2	N/A	DESIGN-BUILD	
35517.3.TAGV2	0540048	DESIGN-BUILD	

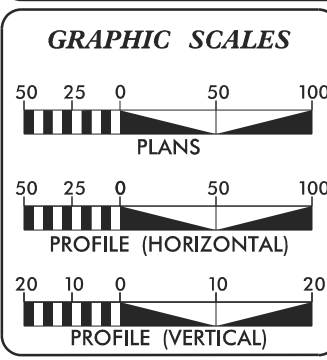


LOCATION: TRIANGLE EXPRESSWAY SOUTHEAST EXTENSION FROM SOUTH OF SR 2542 (ROCK QUARRY ROAD) TO I-87/US 64/US 264
TYPE OF WORK: GRADING, PAVING, DRAINAGE, STRUCTURES, SIGNING, AND SIGNALS



**END TIP PROJECT
R-2829B
-LB- STA. 1531+41.22**

CLEARING AND GRUBBING ON THIS PROJECT WILL BE METHOD III.
 A PORTION OF THIS PROJECT IS WITHIN THE MUNICIPAL BOUNDARIES OF GARNER, KNIGHTDALE, AND RALEIGH.
 THIS IS A CONTROLLED ACCESS PROJECT WITH ACCESS BEING LIMITED TO INTERCHANGES.



DESIGN DATA

ADT 2025 =	34,800
ADT 2045 =	66,600
K =	12%
D =	60/65%
T =	10% *
V =	75 MPH
* TTST =	4% DUAL = 6%
FUNC CLASS =	INTERSTATE STATEWIDE TIER

PROJECT LENGTH

LENGTH ROADWAY TIP PROJECT R-2829B =	5.967 MILES
LENGTH STRUCTURE TIP PROJECT R-2829B =	0.595 MILES
TOTAL LENGTH TIP PROJECT R-2829B =	6.562 MILES

Prepared In the Office of:
ICE of CAROLINAS, PLLC
 ICE of Carolinas, PLLC
 4500 Falls of Neuse Road, Suite 110
 Raleigh, North Carolina 27609
 Phone: 919-872-0333
 License # 020999

2018 STANDARD SPECIFICATIONS

RIGHT OF WAY DATE:
8/29/2023

LETTING DATE:
8/29/2023

Prepared For:
NORTH CAROLINA TURNPIKE AUTHORITY
 1000 Birch Ridge Dr., Raleigh, NC 27610

BRIAN LUSK, P.E.
PROJECT ENGINEER

RON McCOLLUM, P.E.
NCTA CONTACT
DEPUTY CHIEF ENGINEER FOR PRECONSTRUCTION, NCTA

HYDRAULICS ENGINEER

SIGNATURE: _____ P.E.

ROADWAY DESIGN ENGINEER

SIGNATURE: _____ P.E.



★ PROPOSED SIGNAL

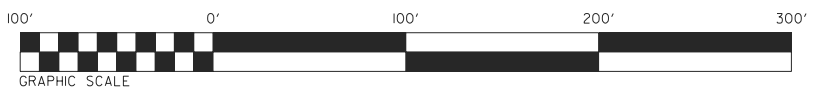
DOCUMENT NOT CONSIDERED FINAL UNLESS ALL SIGNATURES COMPLETED

8/17/99

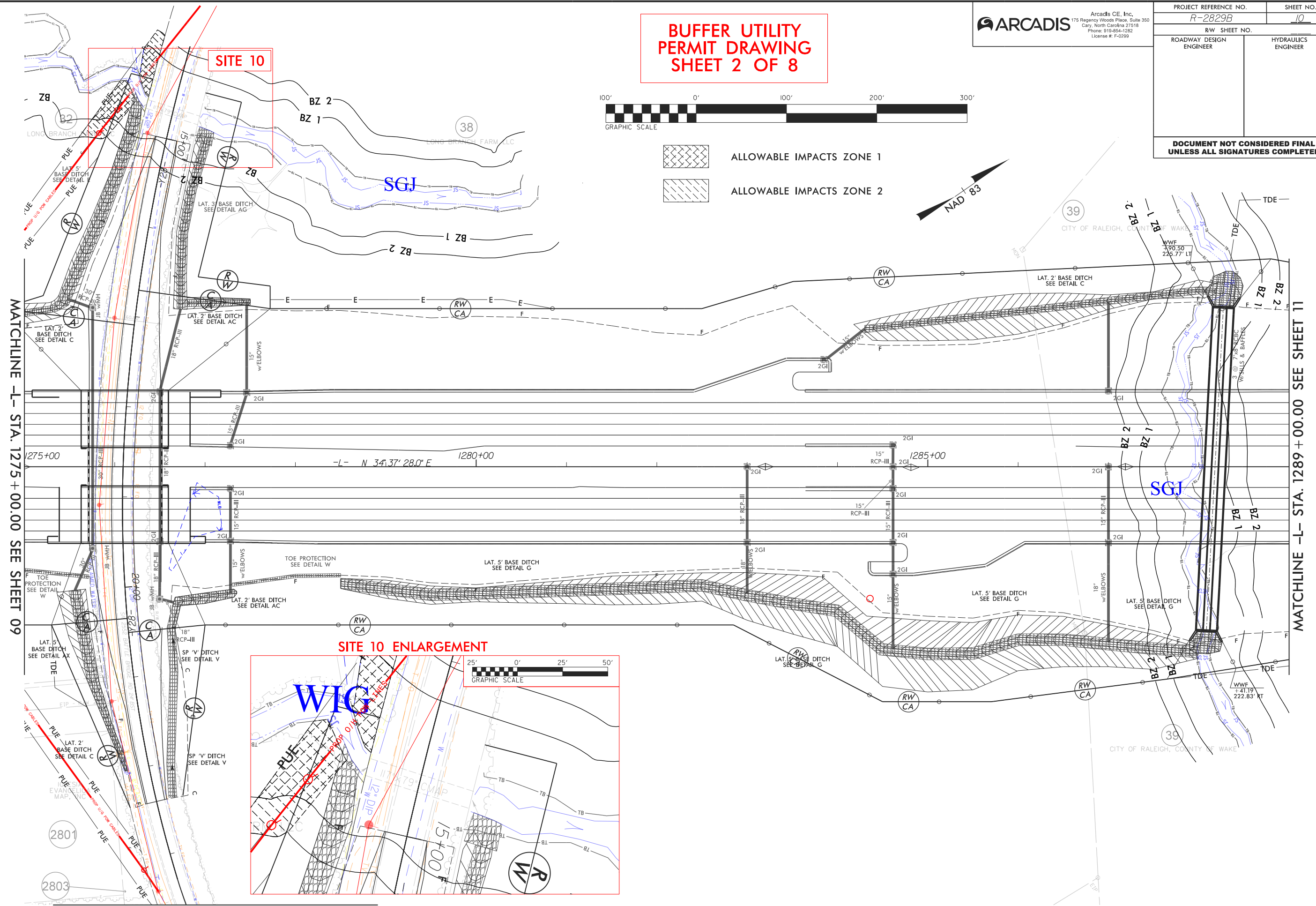
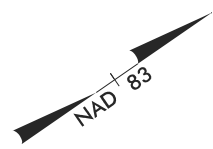
BUFFER UTILITY PERMIT DRAWING SHEET 2 OF 8

ARCADIS
 Arcadis CE, Inc.
 175 Regency Woods Place, Suite 350
 Cary, North Carolina 27518
 Phone: 919-554-1282
 License #: F-0299

PROJECT REFERENCE NO. R-2829B	SHEET NO. 10
RW SHEET NO.	
ROADWAY DESIGN ENGINEER	HYDRAULICS ENGINEER
DOCUMENT NOT CONSIDERED FINAL UNLESS ALL SIGNATURES COMPLETED	



- ALLOWABLE IMPACTS ZONE 1
- ALLOWABLE IMPACTS ZONE 2



MATCHLINE -L- STA. 1275 + 00.00 SEE SHEET 09

MATCHLINE -L- STA. 1289 + 00.00 SEE SHEET 11

MATCHLINE -EY7- SEE SHEET 30

FOR -Y28- CURVE DATA SEE SHT.3A-1
 FOR -L- PROFILE SEE SHT.47
 FOR -Y28- PROFILE SEE SHT.62

DATE: 8/17/99
 TIME: 10:00 AM
 DRAWN BY: J. EVANS
 CHECKED BY: J. EVANS
 APPROVED BY: J. EVANS

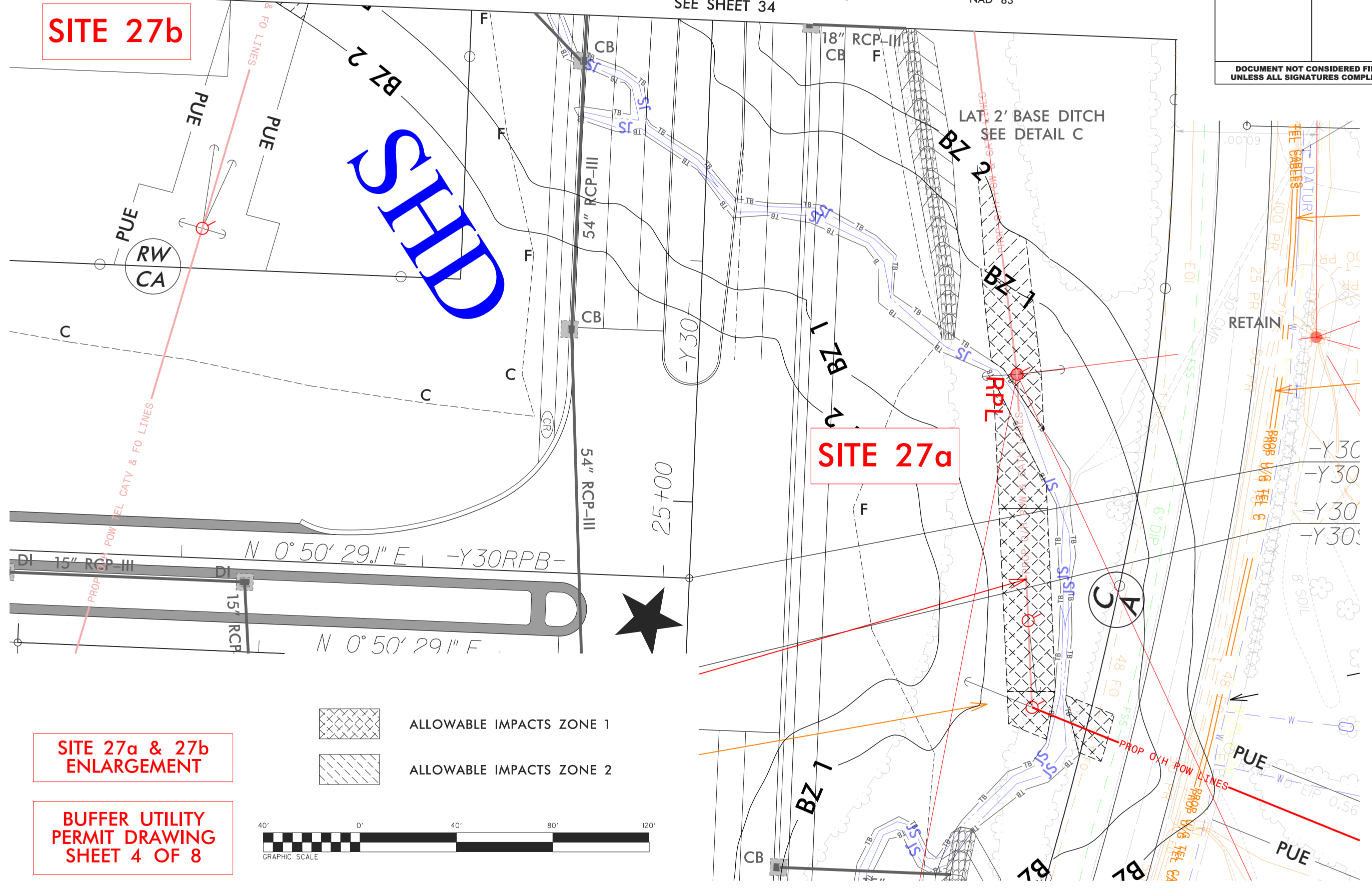
MATCHLINE -Y30- STA. 23+00.00
SEE SHEET 34

NAD 83

SITE 27b



SITE 27a

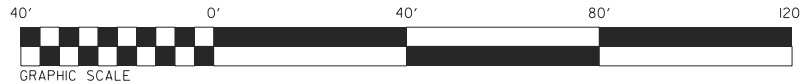
SHED



**SITE 27a & 27b
ENLARGEMENT**

**BUFFER UTILITY
PERMIT DRAWING
SHEET 4 OF 8**

-  ALLOWABLE IMPACTS ZONE 1
-  ALLOWABLE IMPACTS ZONE 2



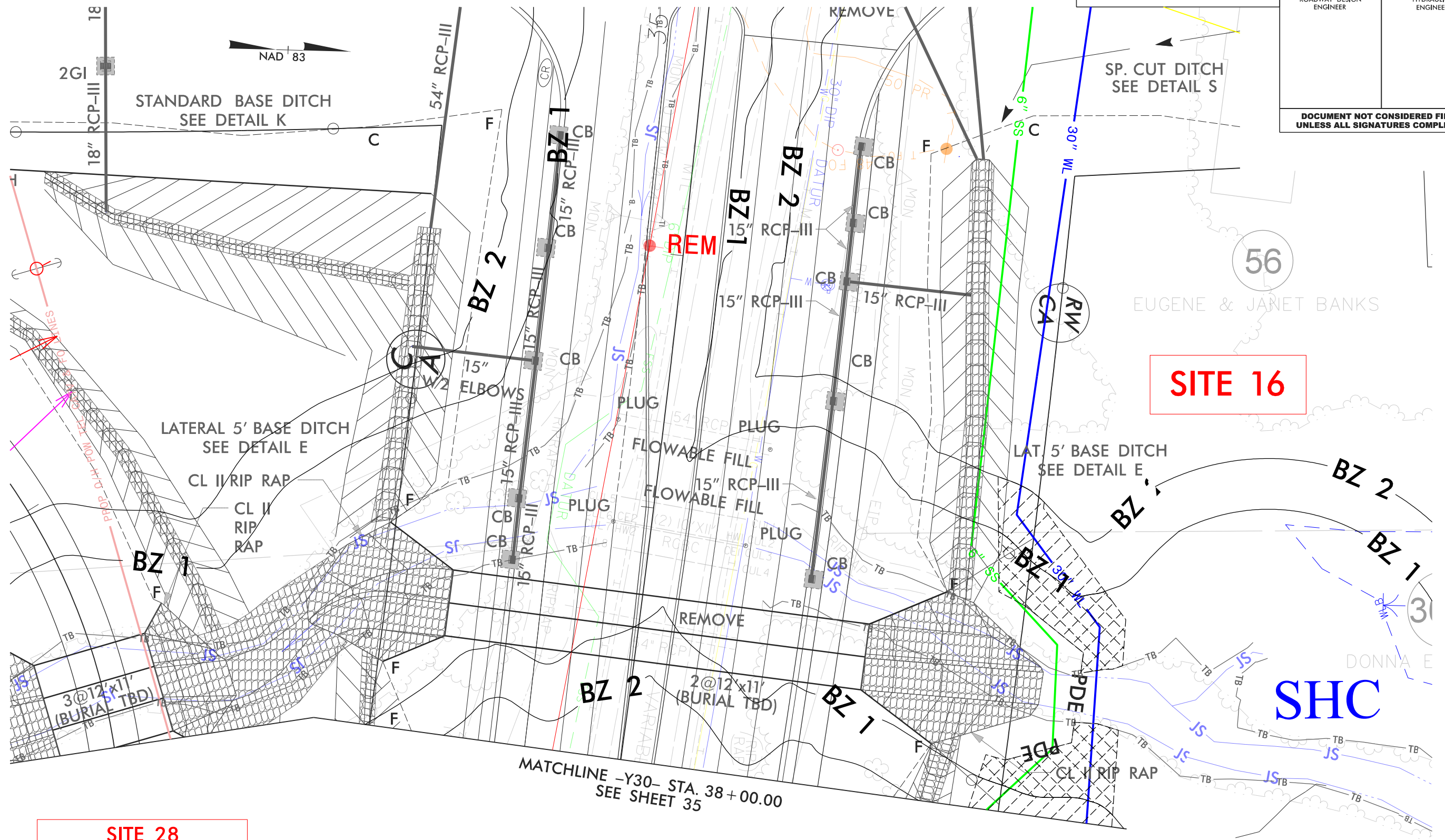
DATE: 8/17/99
DRAWN BY: JLD
CHECKED BY: JLD
APPROVED BY: JLD

8/17/99

ICE of CAROLINAS, PLLC

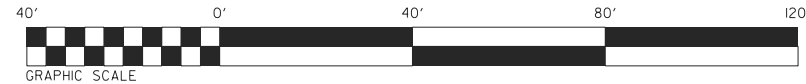
ICE of Carolinas, PLLC
4505 Falls of Neuse Road, Suite 110
Raleigh, North Carolina 27609
Phone: 803-822-0333
License #: P-2999

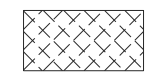
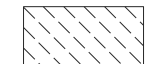
PROJECT REFERENCE NO. R-2829B		SHEET NO.	
RW SHEET NO.		HYDRAULICS ENGINEER	
ROADWAY DESIGN ENGINEER		HYDRAULICS ENGINEER	
DOCUMENT NOT CONSIDERED FINAL UNLESS ALL SIGNATURES COMPLETED			



SITE 28 ENLARGEMENT

BUFFER UTILITY PERMIT DRAWING SHEET 5 OF 8



-  ALLOWABLE IMPACTS ZONE 1
-  ALLOWABLE IMPACTS ZONE 2

DATE: 8/17/99
TIME: 10:00 AM
DRAWN BY: JSC
CHECKED BY: JSC
APPROVED BY: JSC

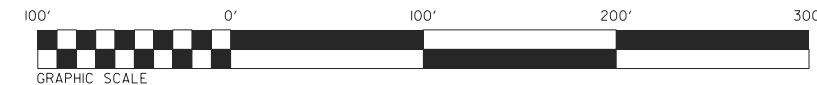
8/17/99

BUFFER UTILITY PERMIT DRAWING SHEET 7 OF 8

ICE of CAROLINAS, PLLCICE of Carolinas, PLLC
4505 Falls of Neuse Road, Suite 110
Raleigh, North Carolina 27609
Phone: 803-822-0333
License #: P-0999

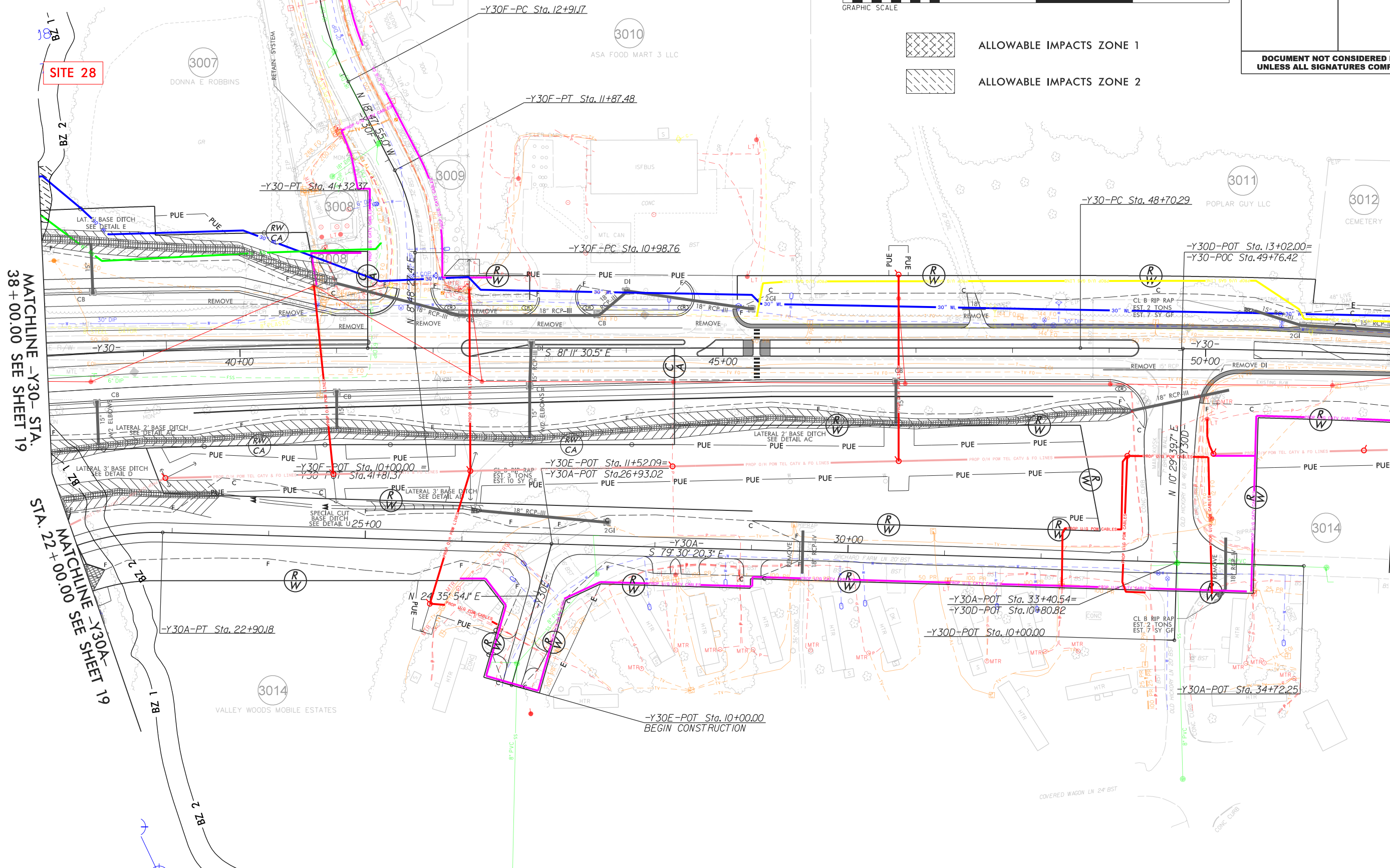
PROJECT REFERENCE NO. <i>R-2829B</i>	SHEET NO. <u>35</u>
RW SHEET NO.	
ROADWAY DESIGN ENGINEER	HYDRAULICS ENGINEER

DOCUMENT NOT CONSIDERED FINAL UNLESS ALL SIGNATURES COMPLETED



ALLOWABLE IMPACTS ZONE 1

ALLOWABLE IMPACTS ZONE 2



MATCHLINE -Y30- STA. 38+00.00 SEE SHEET 19

MATCHLINE SEE SHEET 19
STA. 22+00.00 -Y30A-

MATCHLINE -Y30- STA. 52+00.00 SEE SHEET 36

DATE: 8/17/99
\$ TIMES: \$\$\$\$\$\$
\$\$\$\$\$\$
\$\$\$\$\$\$
\$\$\$\$\$\$
\$\$\$\$\$\$

FOR DITCH DETAILS SEE SHT.2D-1 THRU 2D-5
FOR -Y30- CURVE DATA SEE SHT.3A-1
FOR -Y30A- CURVE DATA SEE SHT.3A-2
FOR -Y30D- CURVE DATA SEE SHT.3A-2
FOR -Y30- PROFILE SEE SHTS.68 & 69
FOR -Y30A- PROFILE SEE SHT.74
FOR -Y30D- PROFILE SEE SHT.74

