

R-2576 Mid-Currituck Bridge

Attachment 4:

# **Wetland Utility Impacts Permit Drawings**

09/28/19

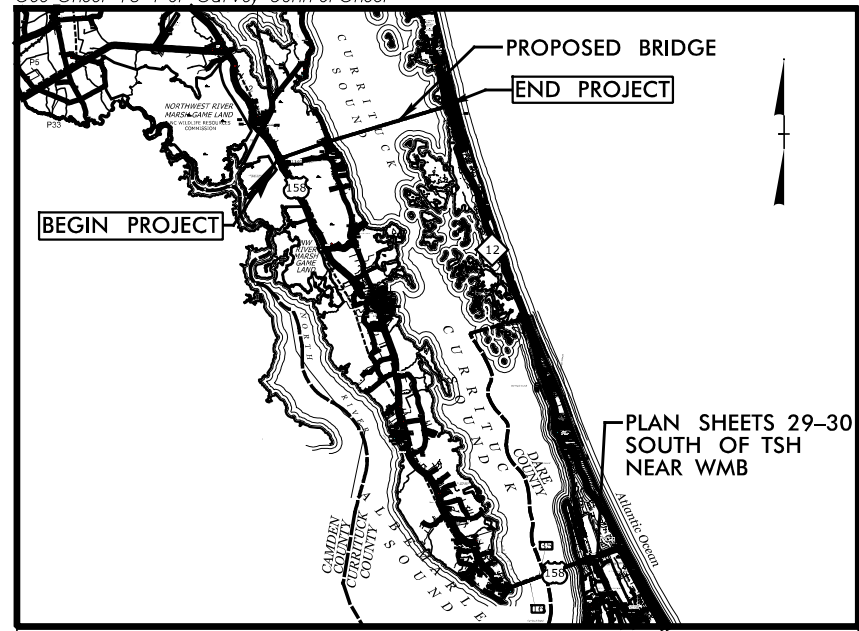
See Sheet 1A For Index of Sheets  
See Sheet 1B For Conventional Symbols  
See Sheet 1C For Survey Control Sheet

STATE OF NORTH CAROLINA  
DIVISION OF HIGHWAYS

**CURRITUCK &  
DARE COUNTIES**

STATE	STATE PROJECT REFERENCE NO.	SHEET NO.	TOTAL SHEETS
N.C.	R-2576	1	
STATE PROJ. NO.	F.A. PROJ. NO.	DESCRIPTION	
34470.1.TA1	BRSTP-000(494)	P.E.	

**TIP PROJECT: R-2576**

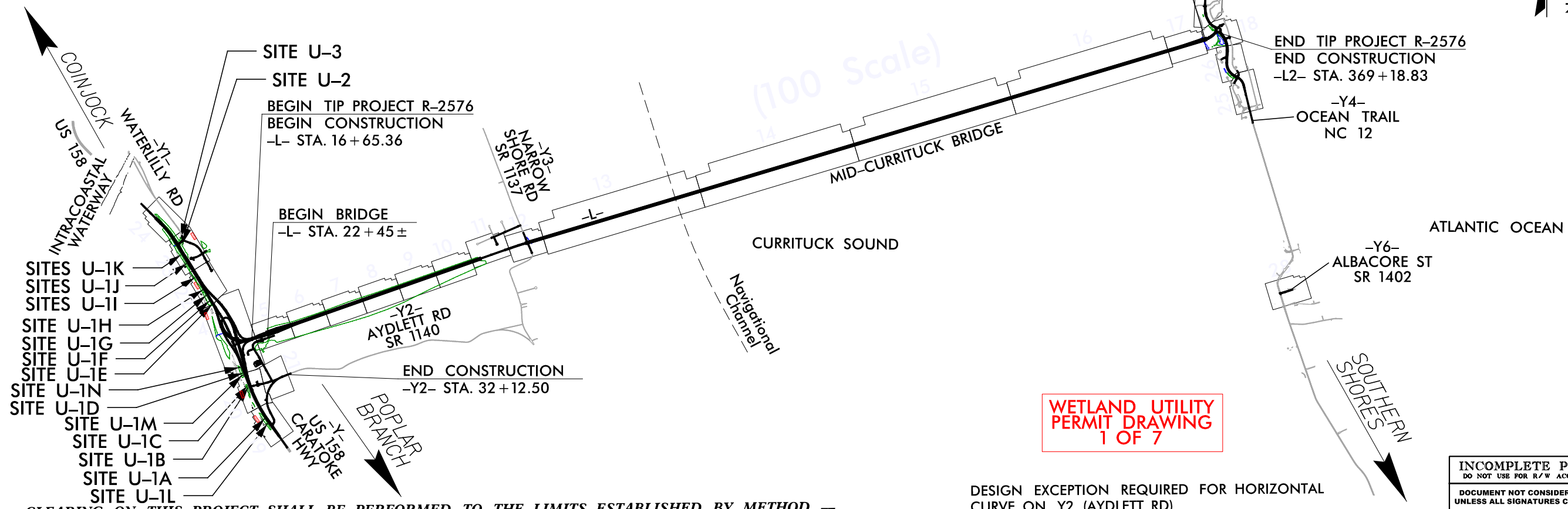


**VICINITY MAP**

75% PLANS

**LOCATION: MID-CURRITUCK BRIDGE FROM US 158 SOUTH OF COINJOCK  
TO NC 12 SOUTH OF COROLLA**

**TYPE OF WORK: GRADING, DRAINAGE, PAVING, AND  
STRUCTURES**



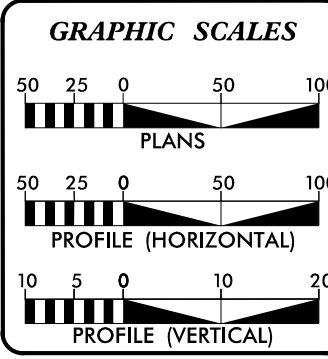
NAD 83 / 2011

CLEARING ON THIS PROJECT SHALL BE PERFORMED TO THE LIMITS ESTABLISHED BY METHOD —

DESIGN EXCEPTION REQUIRED FOR HORIZONTAL  
CURVE ON Y2 (AYDLETT RD)

INCOMPLETE PLANS  
DO NOT USE FOR R/W ACQUISITION  
DOCUMENT NOT CONSIDERED FINAL  
UNLESS ALL SIGNATURES COMPLETED

**CONTRACT:**



**DESIGN DATA**

# ADT 2020 =	11,800
ADT 2040 =	18,000
K =	9 %
D =	60 %
T =	7 % *
V =	60 MPH
* (TTST=2) + (DUAL=1) + (RV=4)	
FUNC CLASS =	ARTERIAL STATEWIDE TIER

**PROJECT LENGTH**

LENGTH ROADWAY TIP PROJECT R-2576	= 0.524 Miles
LENGTH STRUCTURES	= 6.153 Miles
TOTAL LENGTH TIP PROJECT R-2576	= 6.677 Miles

# PROJECT LEVEL TRAFFIC FORECAST (JUNE 2016) (SUMMER WEEKEND)

Prepared In the Office of:

**LOCHNER**  
11 W. LOCHNER, INC.  
2840 PLAZA PLACE, SUITE 202  
RALEIGH, NC 27612  
(919) 571-7111

NC License Number F-0159

2018 STANDARD SPECIFICATIONS

RIGHT OF WAY DATE:  
FY 2024

LETTING DATE:  
FY 2024

BRIAN K. EASON, PE  
PROJECT ENGINEER

CHRISTINA L. YOKELEY, PE  
PROJECT DESIGN ENGINEER

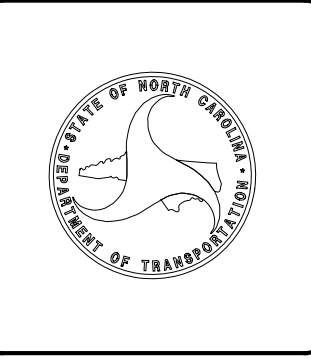
DENNIS JERNIGAN, PE  
NCDOT /NCTA

**HYDRAULICS ENGINEER**

SIGNATURE: \_\_\_\_\_ P.E.

**ROADWAY DESIGN ENGINEER**

SIGNATURE: \_\_\_\_\_ P.E.



10/20/2023  
R-2576\_rdy-TSH.dgn  
ACH10DD

NO.	DESCRIPTION

**LOCHNER**  
 2840 PLAZA PLACE SUITE 202  
 BALTIMORE, MD 21271  
 (410) 577-2711

PROJECT REFERENCE NO. **R-2576** SHEET NO. **4**

ROADWAY DESIGN ENGINEER

HYDRAULIC ENGINEER

**INCOMPLETE PLANS**  
 NOT FOR CONSTRUCTION

DOCUMENT NOT CONSIDERED FINAL UNLESS ALL SIGNATURES COMPLETED

PAVED SHOULDER

**WETLAND UTILITY PERMIT DRAWING**  
**2 OF 7**



-Y-		-Y-NB-		-Y-SB-		-Y2A-		-Y2B-		-Y2C-		-Y2D-		-Y2E-	
PI Sta 54+10.60 Δ = 7' 3" 32.3" Ls = 220.00' LT = 146.67' ST = 73.34' R = 4000.00'	PI Sta 57+47.38 Δ = 7' 3" 10.4" (LT) Ls = 220.00' LT = 146.67' ST = 73.34' R = 4000.00'	PI Sta 60+18.30 Δ = 7' 3" 32.3" Ls = 220.00' LT = 146.67' ST = 73.34' R = 4000.00'	PI Sta 31+05.35 Δ = 2' 5" 53.2" Ls = 270.00' LT = 180.00' ST = 90.00' R = 2700.00'	PI Sta 31+51.49 Δ = 2' 5" 43.4" (LT) Ls = 270.00' LT = 180.00' ST = 90.00' R = 2700.00'	PI Sta 43+88.33 Δ = 2' 5" 53.2" Ls = 270.00' LT = 180.00' ST = 90.00' R = 2700.00'	PI Sta 11+33.35 Δ = 2' 28" 17.2" Ls = 200.00' LT = 133.35' ST = 66.68' R = 2000.00'	PI Sta 13+18.76 Δ = 2' 28" 17.2" Ls = 200.00' LT = 133.35' ST = 66.68' R = 2000.00'	PI Sta 16+43.39 Δ = 2' 28" 17.2" Ls = 200.00' LT = 133.35' ST = 66.68' R = 2000.00'	PI Sta 19+10.06 Δ = 2' 28" 17.2" Ls = 200.00' LT = 133.35' ST = 66.68' R = 2000.00'	PI Sta 22+18.76 Δ = 14' 10" 01.7" (RT) Ls = 200.00' LT = 59.07' ST = 29.54' R = 2350.00'	PI Sta 26+124.46 Δ = 2' 28" 17.2" Ls = 200.00' LT = 133.35' ST = 66.68' R = 2000.00'	PI Sta 28+18.13 Δ = 2' 28" 17.2" Ls = 200.00' LT = 133.35' ST = 66.68' R = 2000.00'	PI Sta 31+19.79 Δ = 10' 41" 31.9" (LT) Ls = 220.00' LT = 44.27' ST = 22.14' R = 2350.00'	PI Sta 34+16.17 Δ = 2' 28" 17.2" Ls = 200.00' LT = 133.35' ST = 66.68' R = 2000.00'	

DENOTES TEMPORARY FILL IN WETLAND

**SITE U-1D**  
(TYP. DETAIL A, THIS SHEET)

**SITE U-1N**  
(TYP. DETAIL C, THIS SHEET)

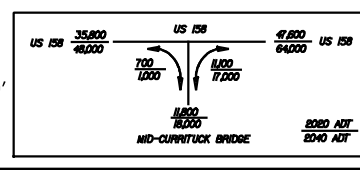
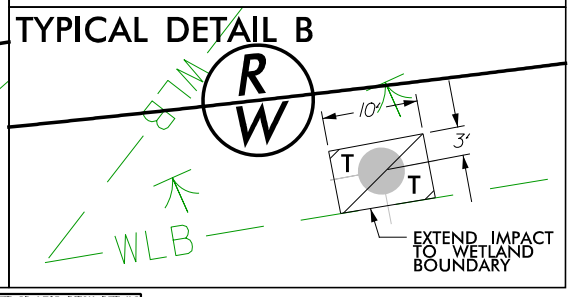
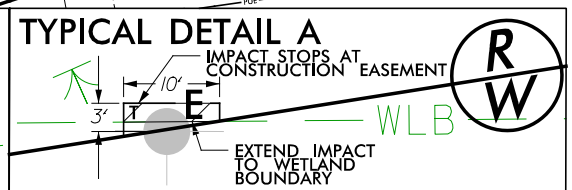
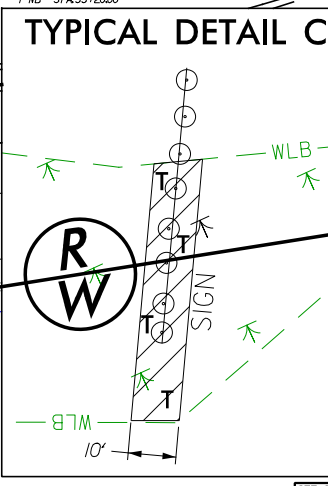
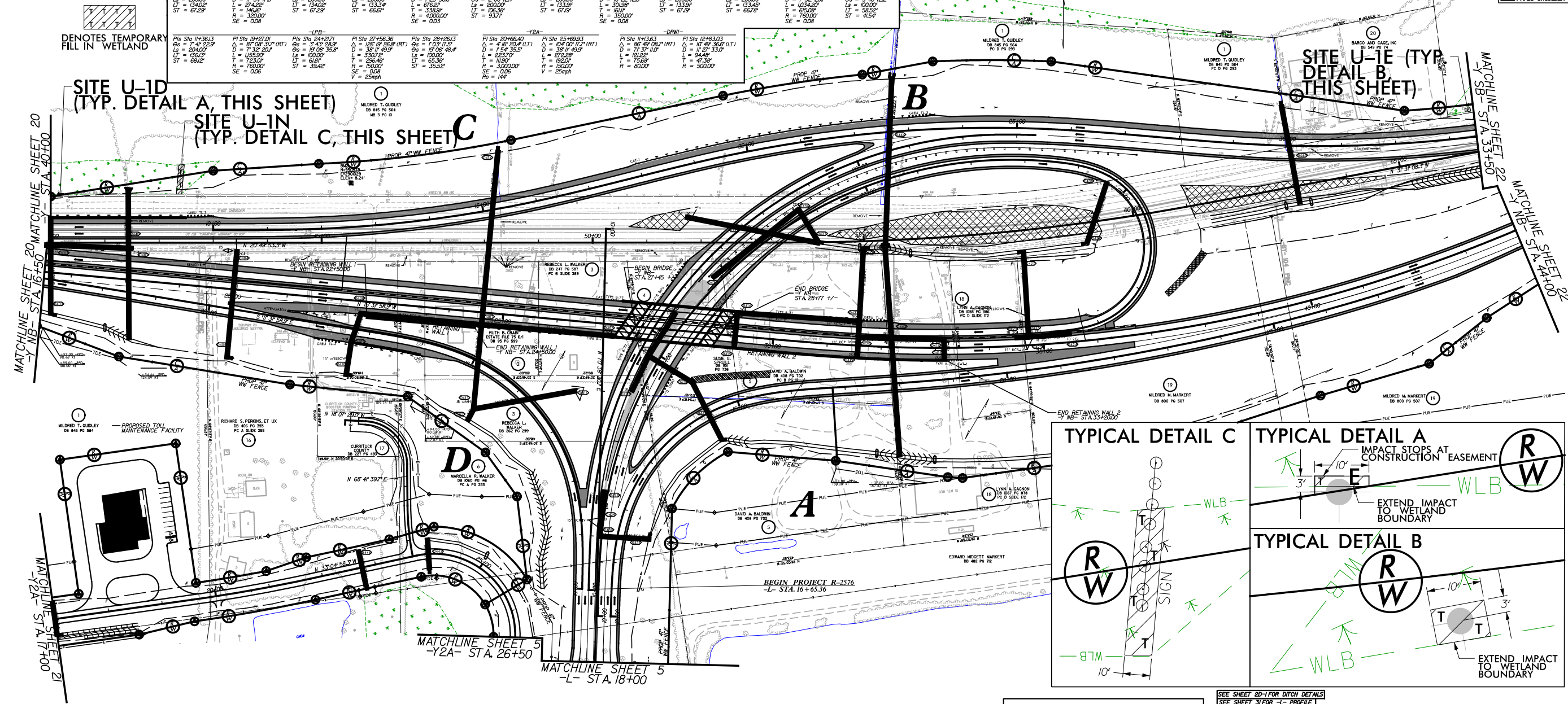
MATCHLINE SHEET 20  
-Y-NB- STA. 16+50

MATCHLINE SHEET 22  
-Y-SB- STA. 33+50

MATCHLINE SHEET 21  
-Y2A- STA. 17+00

MATCHLINE SHEET 5  
-Y2A- STA. 26+50

MATCHLINE SHEET 5  
-L- STA. 18+00



SEE SHEET 20-1 FOR DITCH DETAILS  
 SEE SHEET 31 FOR -L- PROFILE  
 SEE SHEET 37 FOR -Y- PROFILE  
 SEE SHEET 39 FOR -Y-SB- PROFILE  
 SEE SHEET 39-40 FOR -Y-NB- PROFILE  
 SEE SHEET 41-42 FOR -LPB- PROFILE  
 SEE SHEET 42 FOR -RPB- PROFILE  
 SEE SHEET 43 FOR -RPA- PROFILE  
 SEE SHEET 44 FOR -RPD- PROFILE  
 SEE SHEET 46-47 FOR -Y2A- PROFILE  
 SEE SHEET 46 FOR -Y2B- PROFILE

PROJECT NO.	
COUNTY	
DESIGNED BY	
CHECKED BY	
DATE	

6/2/99

# LOCHNER

H. W. LOCHNER, INC.  
2840 PLAZA PLACE, SUITE 202  
RALEIGH, NC 27612  
(919) 571-7111

NC License  
Number F-0159



1223 Jones Franklin Rd.  
Raleigh, N.C. 27606  
License No. F-0377  
Bus: 919 851 8077  
Fax: 919 851 8107

TRANSPORTATION PLANNING/DESIGN - BRIDGE/STRUCTURE DESIGN  
CIVIL/SITE DESIGN - GIS/GPS - CONSTRUCTION OBSERVATION

PROJECT REFERENCE NO. SHEET NO.

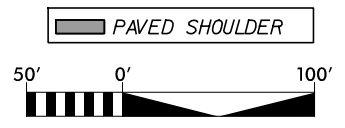
R-2576 19

ROADWAY DESIGN ENGINEER PAVEMENT DESIGN ENGINEER

**INCOMPLETE PLANS**  
DO NOT USE FOR R/W ACQUISITION

**DOCUMENT NOT CONSIDERED FINAL**  
UNLESS ALL SIGNATURES COMPLETED

**WETLAND UTILITY PERMIT DRAWING**  
**3 OF 7**



-Y-		
PIs Sta 21+52.26	PI Sta 27+75.58	PIs Sta 33+94.24
$\Theta_s = 0^\circ 55' 36.6''$	$\Delta = 12^\circ 43' 01.7''$ (RT)	$\Theta_s = 0^\circ 55' 36.6''$
Ls = 165.00'	D = 1' 07" 24.4"	Ls = 165.00'
LT = 110.00'	L = 1,131.98'	LT = 110.00'
ST = 55.00'	T = 568.32'	ST = 55.00'
	R = 5,100.00'	
	SE = 0.03	

-Y2-		
PI Sta 11+70.00	PI Sta 25+7.49	
$\Delta = 81^\circ 32' 22.8''$ (LT)	$\Delta = 95^\circ 09' 21.1''$ (RT)	
D = 36° 57' 54.1"	D = 6° 44' 26.4"	
L = 220.59'	L = 1,411.67'	
T = 133.65'	T = 930.15'	
R = 155.00'	R = 850.00' **	
SE = 0.06	SE = 0.06	
Ro = 144'	Ro = 144'	

\*\* DESIGN EXCEPTION REQUIRED FOR HORIZONTAL CURVE

DENOTES TEMPORARY FILL IN WETLAND



SUZANNE LEA MIDGETT TRUSTEE  
UNDER THE JAMES A. MIDGETT & MARY THOMPSON MIDGETT  
IRREVOCABLE TRUST  
DB 974 PG 425

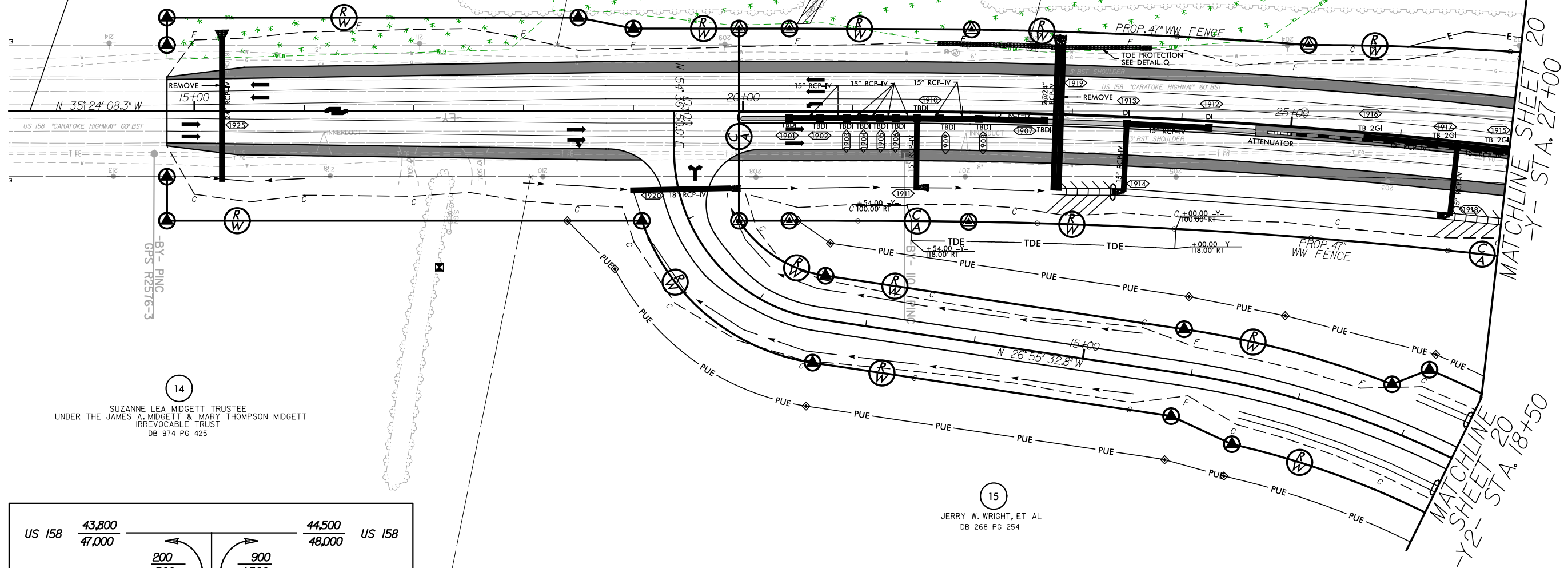
14

BEGIN CONSTRUCTION  
-Y- STA. 13+50.00

SITE U-1L  
(TYP. DETAIL C,  
DRAWING 2)

SITE U-1A  
(TYP. DETAIL B,  
DRAWING 2)

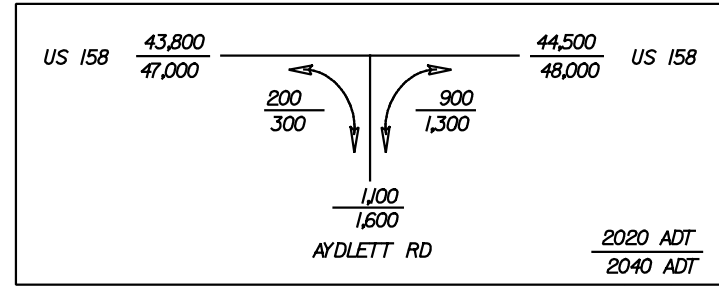
15  
JERRY W. WRIGHT, ET AL  
DB 268 PG 254



SUZANNE LEA MIDGETT TRUSTEE  
UNDER THE JAMES A. MIDGETT & MARY THOMPSON MIDGETT  
IRREVOCABLE TRUST  
DB 974 PG 425

14

15  
JERRY W. WRIGHT, ET AL  
DB 268 PG 254



SEE SHEET 2D-1 FOR DITCH DETAILS  
SEE SHEET 36 FOR -Y- PROFILE  
SEE SHEET 45 FOR -Y2- PROFILE

10/20/2023  
R2576\_rdy\_psh19\_Utl1.tj\Impacts.dgn

6/2/99

# LOCHNER

H. W. LOCHNER, INC.  
2840 PLAZA PLACE, SUITE 202  
RALEIGH, NC 27612  
(919) 571-7111

NC License  
Number F-0159



1223 Jones Franklin Rd.  
Raleigh, N.C. 27606  
License No. F-0377  
Bus: 919 851 8077  
Fax: 919 851 8107

TRANSPORTATION PLANNING/DESIGN - BRIDGE/STRUCTURE DESIGN  
CIVIL/SITE DESIGN - GIS/GPS - CONSTRUCTION OBSERVATION

PROJECT REFERENCE NO. SHEET NO.

R-2576 20

ROADWAY DESIGN ENGINEER PAVEMENT DESIGN ENGINEER

**INCOMPLETE PLANS**

DO NOT USE FOR R/W ACQUISITION

**DOCUMENT NOT CONSIDERED FINAL  
UNLESS ALL SIGNATURES COMPLETED**



PAVED SHOULDER

-Y-			
Pls Sta 21+52.26 Δs = 0° 55' 36.6" Ls = 165.00' LT = 110.00' ST = 55.00'	Pls Sta 27+75.58 Δ = 12° 43' 01.7" (RT) D = 1° 07' 24.4" L = 1,131.98' T = 568.32' R = 5,100.00' SE = 0.03	Pls Sta 33+94.24 Δs = 0° 55' 36.6" Ls = 165.00' LT = 110.00' ST = 55.00'	
-Y_NB-			
Pls Sta 12+34.73 Δ = 5° 17' 39.2" (RT) D = 1° 07' 42.7" L = 469.12' T = 234.73' R = 5,077.00' SE = 0.03	Pls Sta 15+24.12 Δs = 0° 55' 51.8" Ls = 165.00' LT = 110.00' ST = 55.00'	Pls Sta 25+17.49 Δ = 95° 09' 21.1" (RT) D = 6° 44' 26.4" L = 1,411.67' T = 930.15' R = 850.00' ** SE = 0.06 Ro = 144'	Pls Sta 14+46.16 Δ = 8° 07' 45.1" (LT) D = 2° 51' 53.2" L = 283.76' T = 142.12' R = 2,000.00'
** DESIGN EXCEPTION REQUIRED FOR HORIZONTAL CURVE			

## WETLAND UTILITY PERMIT DRAWING 4 OF 7



DENOTES TEMPORARY FILL IN WETLAND

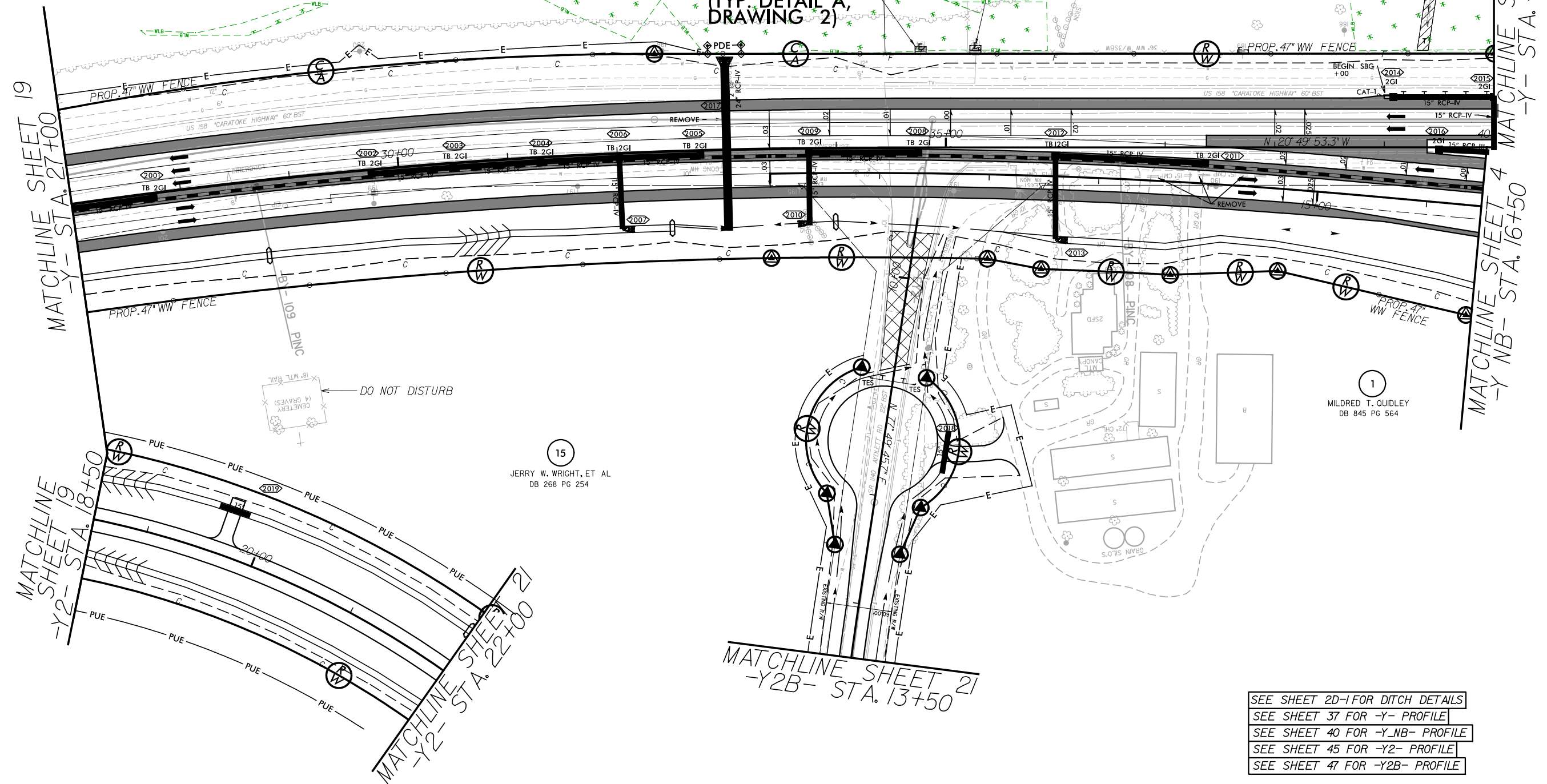
JERRY W. WRIGHT, ET AL  
DB 268 PG 254

MILDRED T. QUIDLEY  
DB 845 PG 564  
MB 3 PG 10

SITE U-1M  
(TYP. DETAIL C,  
DRAWING 2)

SITE U-1C  
(TYP. DETAIL A,  
DRAWING 2)

SITE U-1B  
(TYP. DETAIL A,  
DRAWING 2)



- SEE SHEET 2D-I FOR DITCH DETAILS
- SEE SHEET 37 FOR -Y- PROFILE
- SEE SHEET 40 FOR -Y\_NB- PROFILE
- SEE SHEET 45 FOR -Y2- PROFILE
- SEE SHEET 47 FOR -Y2B- PROFILE

10/20/2023 R-2576\_rdy\_psh20\_UtilityImpacts.dgn

6/2/99



**LOCHNER**  
 H. W. LOCHNER, INC.  
 2840 PLAZA PLACE, SUITE 202  
 RALEIGH, NC 27612  
 (919) 571-7111

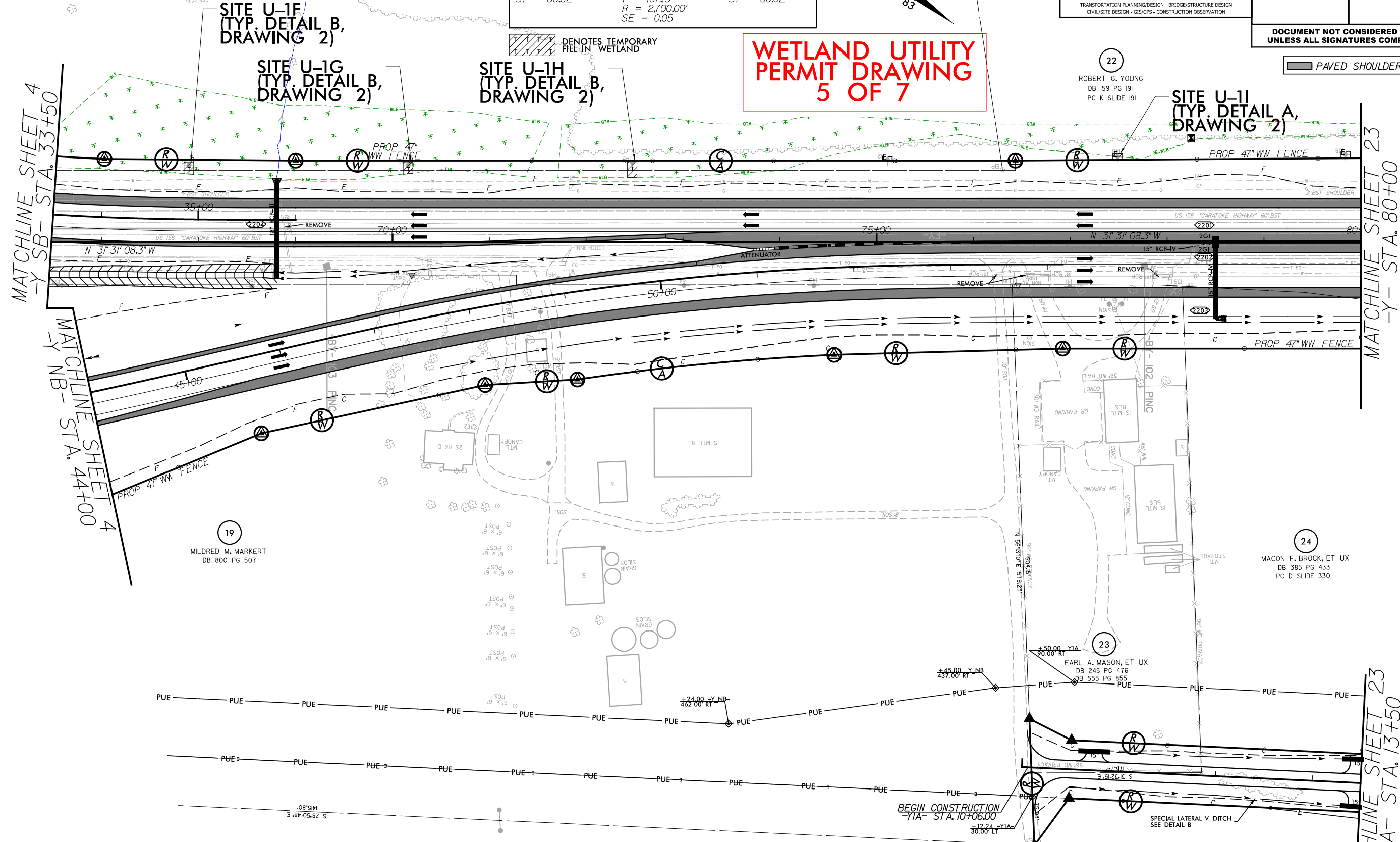
NC License Number F-0159  
 1223 Jones Franklin Rd.  
 Raleigh, N.C. 27606  
 License No. F-0377  
 Bus: 919 851 8077  
 Fax: 919 851 8107

**WETHERILL ENGINEERING**  
 TRANSPORTATION PLANNING/DESIGN - BRIDGE/STRUCTURE DESIGN  
 CIVIL/SITE DESIGN - GIS/GPS - CONSTRUCTION OBSERVATION

PROJECT REFERENCE NO. R-2576	SHEET NO. 22
ROADWAY DESIGN ENGINEER	PAVEMENT DESIGN ENGINEER
<b>INCOMPLETE PLANS</b> DO NOT USE FOR R/W ACQUISITION	
<b>DOCUMENT NOT CONSIDERED FINAL</b> UNLESS ALL SIGNATURES COMPLETED	

-Y_NB-		
Pls Sta 47+22.32	Pl Sta 49+89.44	Pls Sta 52+55.98
$\theta_s = 2^\circ 32' 47.3"$	$\Delta = 7^\circ 55' 45.6" (RT)$	$\theta_s = 2^\circ 32' 47.3"$
$L_s = 240.00'$	$D = 2^\circ 07' 19.4"$	$L_s = 240.00'$
$LT = 160.02'$	$L = 373.66'$	$LT = 160.02'$
$ST = 80.02'$	$T = 187.13'$	$ST = 80.02'$
	$R = 2,700.00'$	
	$SE = 0.05$	

WETLAND UTILITY PERMIT DRAWING 5 OF 7



MATCHLINE SHEET 4  
-Y\_SB- STA. 33+50

MATCHLINE SHEET 4  
-Y\_NB- STA. 44+00

MATCHLINE SHEET 23  
-Y- STA. 80+00

MATCHLINE SHEET 23  
-YIA- STA. 13+50

SEE SHEET 2D-1 FOR DITCH DETAILS  
 SEE SHEET 37-38 FOR -Y- PROFILE  
 SEE SHEET 40-41 FOR -Y\_NB- PROFILE  
 SEE SHEET 39 FOR -Y\_SB- PROFILE  
 SEE SHEET 44 FOR -YIA- PROFILE

10/20/2023  
R-2576\_rdy\_psh22\_Utl.tty\_impacts.dgn

6/2/99

# LOCHNER

H. W. LOCHNER, INC.  
2840 PLAZA PLACE, SUITE 202  
RALEIGH, NC 27612  
(919) 571-7111

PROJECT REFERENCE NO. **R-2576** SHEET NO. **23**

ROADWAY DESIGN ENGINEER  
PAVEMENT DESIGN ENGINEER

NC License Number F-0159

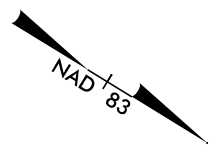


1223 Jones Franklin Rd.  
Raleigh, N.C. 27606  
License No. F-0377  
Bus: 919 851 8077  
Fax: 919 851 8107

**INCOMPLETE PLANS**  
DO NOT USE FOR R/W ACQUISITION

**DOCUMENT NOT CONSIDERED FINAL**  
UNLESS ALL SIGNATURES COMPLETED

-YI-	-YIA-	-YIB-	-Y-
PI Sta 12+70.31	PI Sta 19+89.68	PI Sta 10+83.72	PI Sta 12+68.51
$\Delta = 80^\circ 42' 12.5''$ (LT)	$\Delta = 40^\circ 22' 05.5''$ (LT)	$\Delta = 4^\circ 47' 38.4''$ (LT)	$\Delta = 19^\circ 08' 28.0''$ (LT)
D = 46' 55" 31.0"	D = 11' 27" 33.0"	D = 2' 51" 53.2"	D = 9' 32" 57.5"
L = 171.98'	L = 352.28'	L = 167.34'	L = 200.45'
T = 103.74'	T = 183.81'	T = 83.72'	T = 101.17'
R = 122.10'	R = 500.00'	R = 2,000.00'	R = 600.00'
SE = 0.06	SE = 0.05		
Ro = 124'	Ro = 100'		



MATCHLINE SHEET 22  
-Y- STA. 80+00

MATCHLINE SHEET 24  
-Y- STA. 93+50

MATCHLINE SHEET 22  
-YIA- STA. 13+50

ROBERT G. YOUNG  
DB 159 PG 191  
PC K SLIDE 191

DENOTES TEMPORARY FILL IN WETLAND  
 DENOTES HAND CLEARING

19  
MILDRED M. MARKERT  
DB 800 PG 507

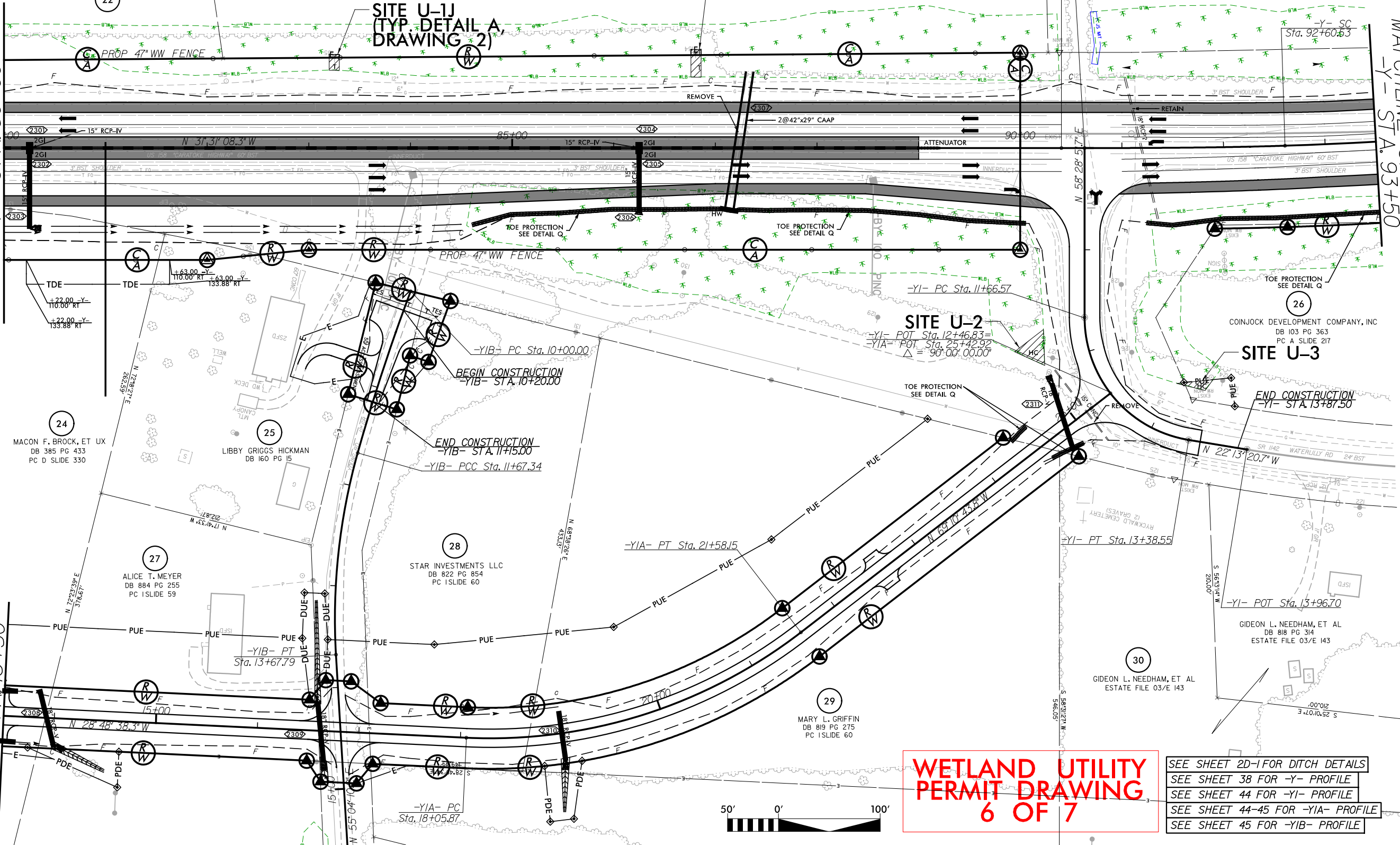
SITE U-1K  
(TYP. DETAIL A,  
DRAWING 2)

SITE U-1J  
(TYP. DETAIL A,  
DRAWING 2)

COINJOCK DEVELOPMENT COMPANY, INC  
DB 103 PG 363  
PC A SLIDE 217

-Y- TS Sta. 90+40.53  
-Y- POT Sta. 90+63.30  
-YI- POT Sta. 10+00.00  
 $\Delta = 90^\circ 00' 00.00''$

PAVED SHOULDER



24  
MACON F. BROCK, ET UX  
DB 385 PG 433  
PC D SLIDE 330

25  
LIBBY GRIGGS HICKMAN  
DB 160 PG 15

27  
ALICE T. MEYER  
DB 884 PG 255  
PC 1 SLIDE 59

28  
STAR INVESTMENTS LLC  
DB 822 PG 854  
PC 1 SLIDE 60

29  
MARY L. GRIFFIN  
DB 819 PG 275  
PC 1 SLIDE 60

30  
GIDEON L. NEEDHAM, ET AL  
ESTATE FILE 03/E 143

GIDEON L. NEEDHAM, ET AL  
DB 818 PG 314  
ESTATE FILE 03/E 143

**WETLAND UTILITY PERMIT DRAWING**  
**6 OF 7**

- SEE SHEET 2D-1 FOR DITCH DETAILS
- SEE SHEET 38 FOR -Y- PROFILE
- SEE SHEET 44 FOR -YI- PROFILE
- SEE SHEET 44-45 FOR -YIA- PROFILE
- SEE SHEET 45 FOR -YIB- PROFILE



10/20/2023  
R2576\_rdu\_psh23\_Utl1.tty\impacts.dgn

