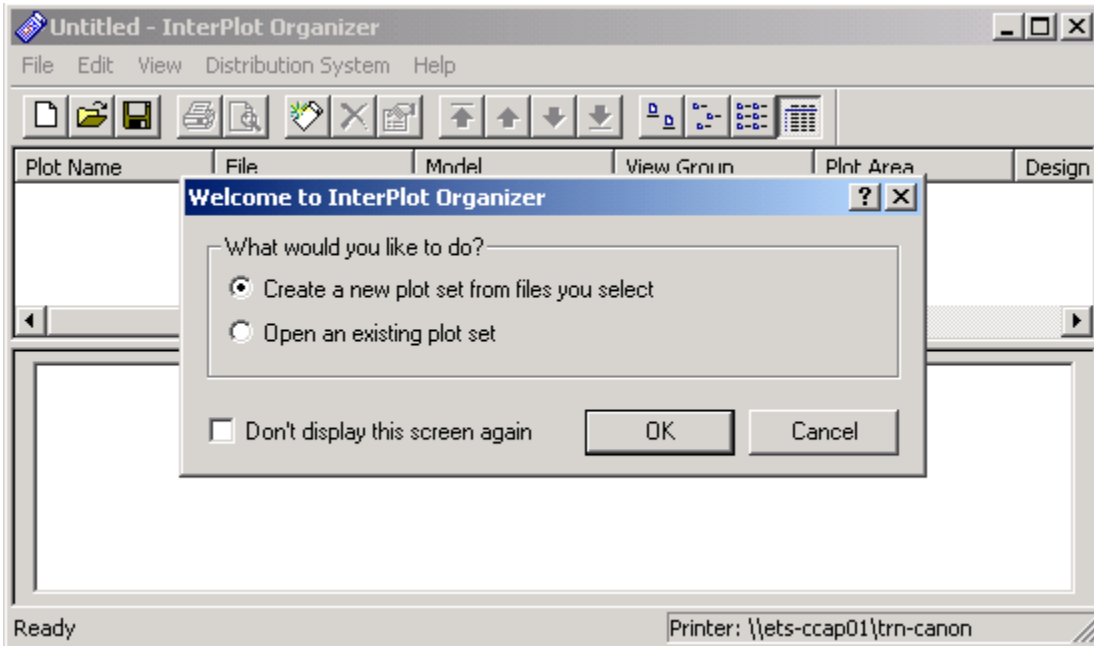


Plotting Cross Sections

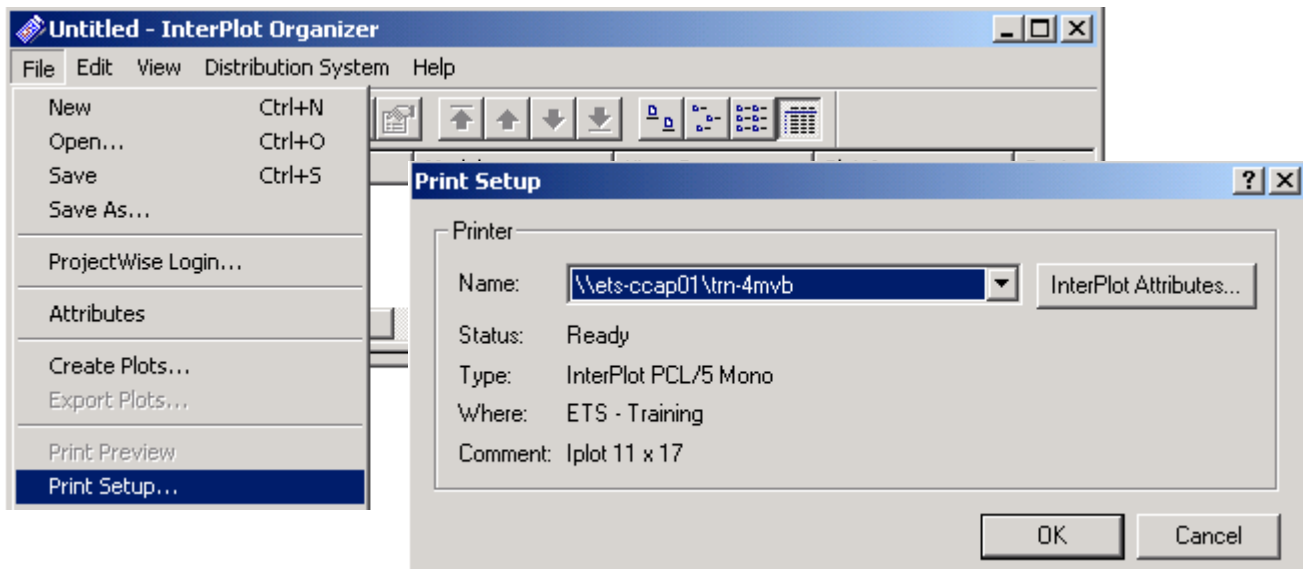
Cross Sections will be plotted using InterPlot Organizer. To access the Organizer, select Windows Start>Programs>Interplot Utilities>Interplot Organizer.

1. Activate InterPlot Organizer and select Cancel in the “Welcome to InterPlot Organizer” dialog.

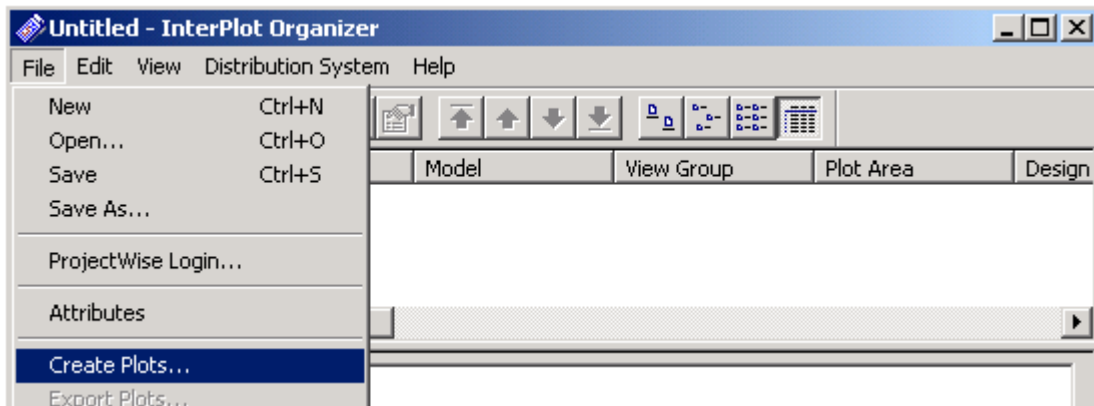


2. Click on File>>Print Setup and select the plot queue for printing.

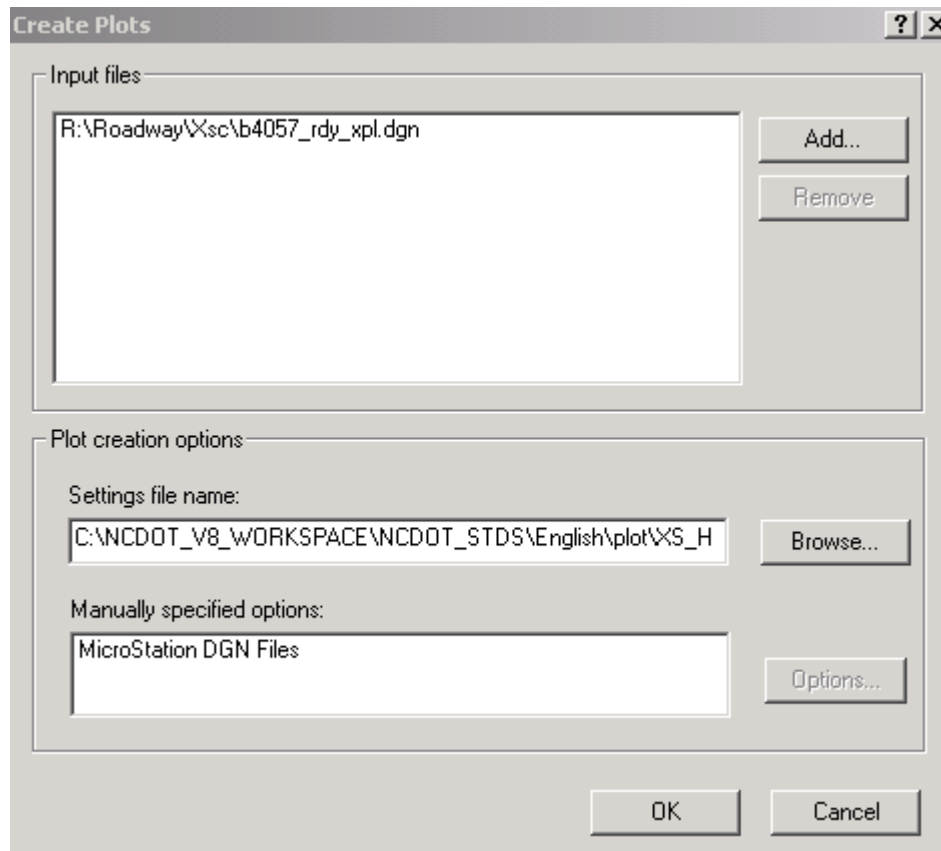
(NOTE: Example shown is for half size plots. The plots in this example will be at a 10 scale since we used the 5/10 Scale in the Sheet Layout.)



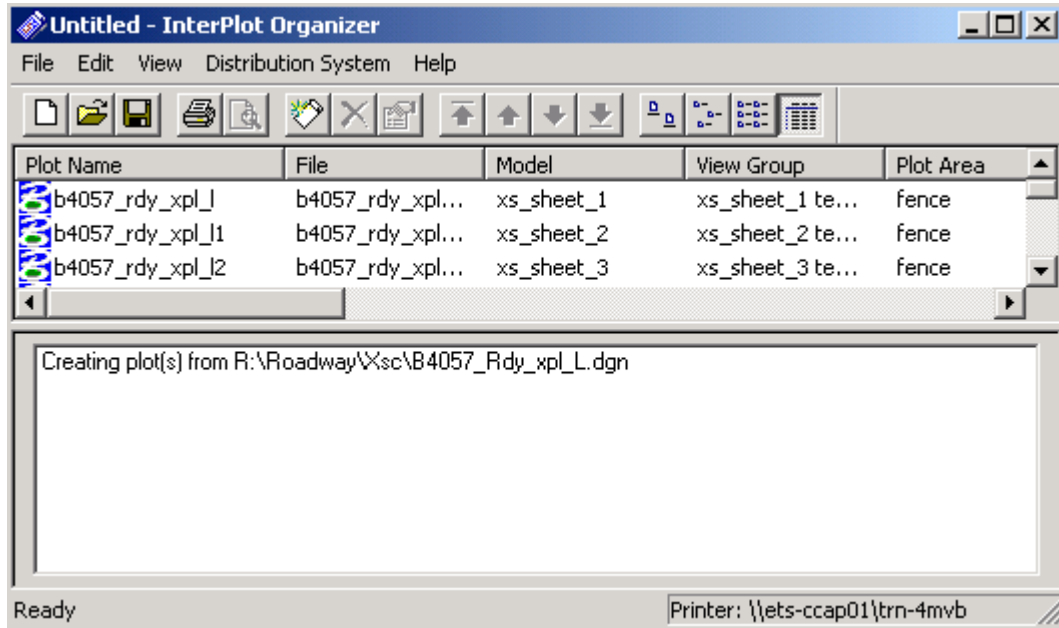
3. Click on File>>Create Plots.



4. In the Input files section of the Create Plots dialog, click Add and select the XPL file.
5. In the Plot creation Options section of the dialog, click Browse and select the XS_Halfsize.set file located in:
C:\NCDOT_V8_Workspace\NCDOT_StdS\English\Plot.



- Click OK and IPLOT Organizer will generate a plot for each sheet using the correct IPLOT pen table and Paper Size. The scale is set by search criteria that places a fence around the sheet plot border. (Because of different plotters that can plot half size, the scale may need to be edited.)



- Right clicking on the Plot Name will allow the user to preview the plots before submitting.
- To modify the plots, select all plots, right click and select Properties. This will invoke the Modify Plots box and changes may be made to all the plots at once.
- To submit the plots, select the Plot icon or select Print from the File menu. Be sure to toggle on the "Submit Plots as Separate Print Jobs" option.