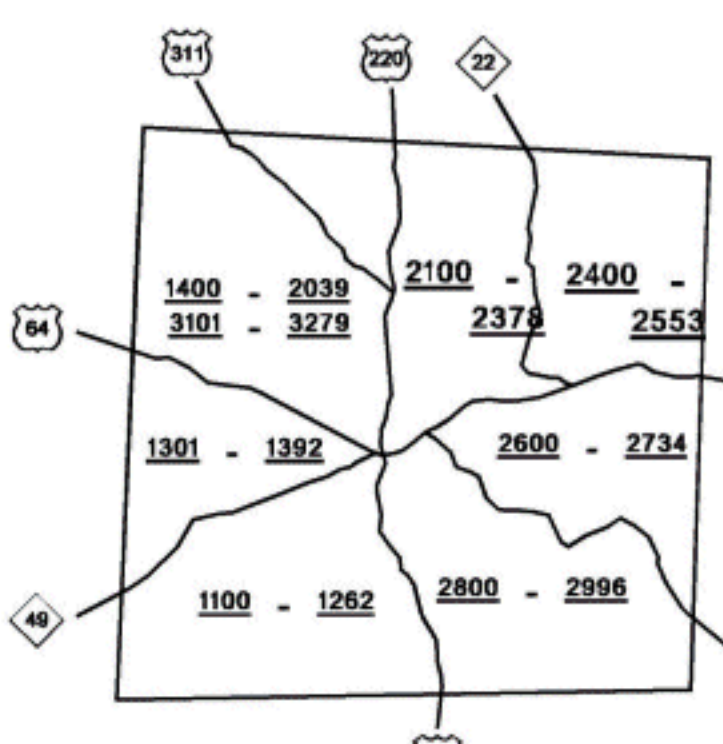
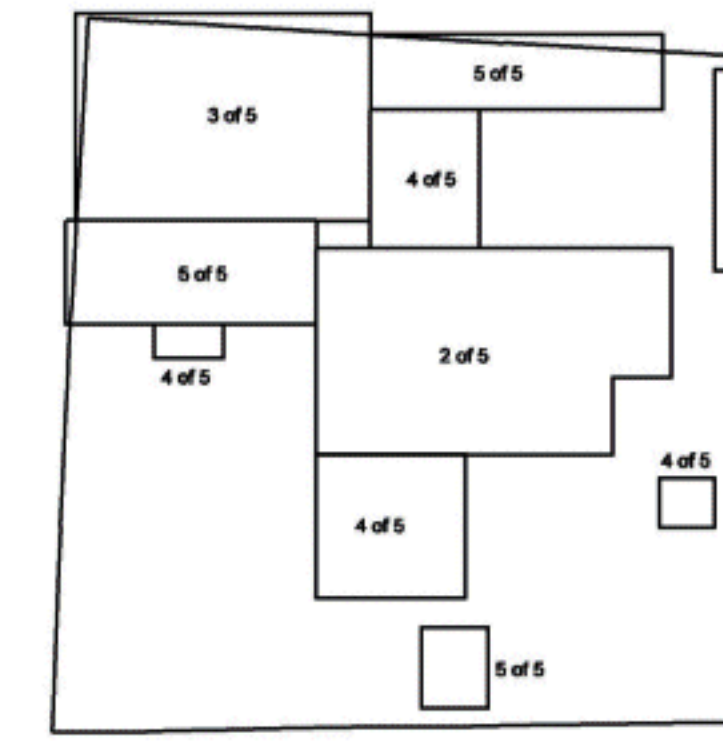
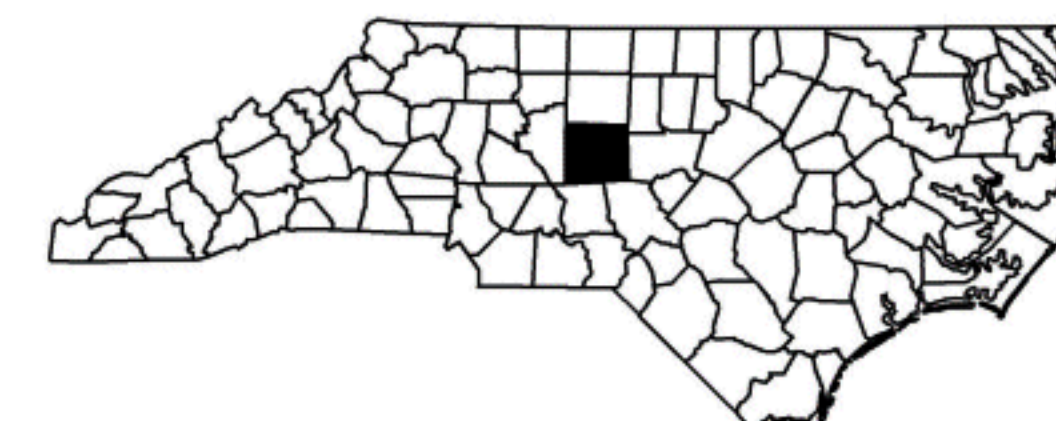


SUPPLEMENTAL LEGEND	
	INTERSTATE
	FUTURE INTERSTATE
	PRINCIPAL ARTERIAL
	FUTURE PRINCIPAL ARTERIAL
	MINOR ARTERIAL
	FUTURE MINOR ARTERIAL
	MAJOR COLLECTOR
	FUTURE MAJOR COLLECTOR
	MINOR COLLECTOR
	FUTURE MINOR COLLECTOR
	EXISTING URBAN AREA
	SMOOTHED AREA

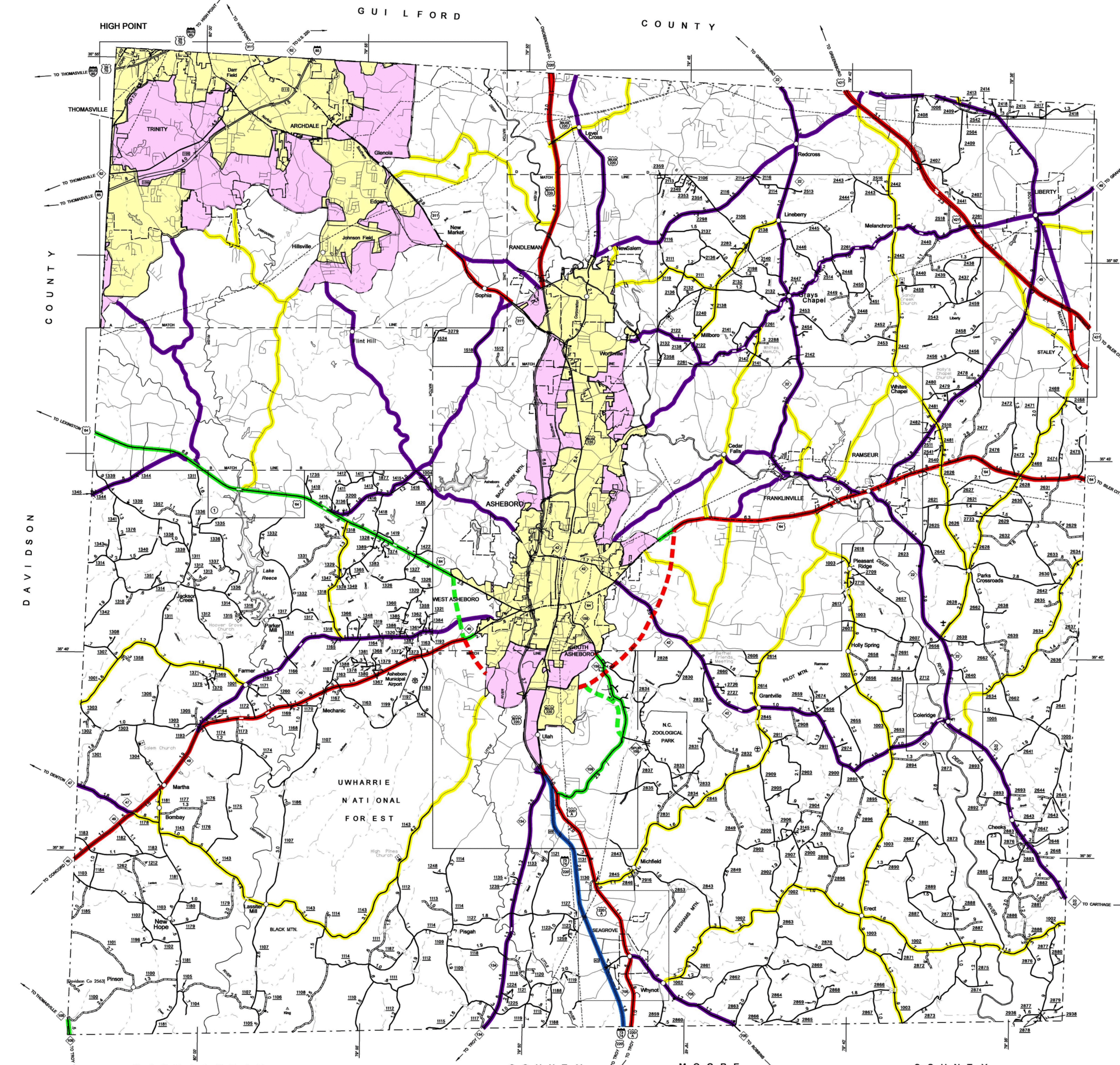
APPROVED BY FHWA FEB. 14, 2006



KEY TO COUNTY ROAD NUMBERS
Also Numbers 1001 - 1097



NOTE: MAP INCLUDES ONLY STATE MAINTAINED ROADS OR IMPORTANT NON-SYSTEM ROADS.
ROADS SHOWN AS OF APRIL 27, 2004.

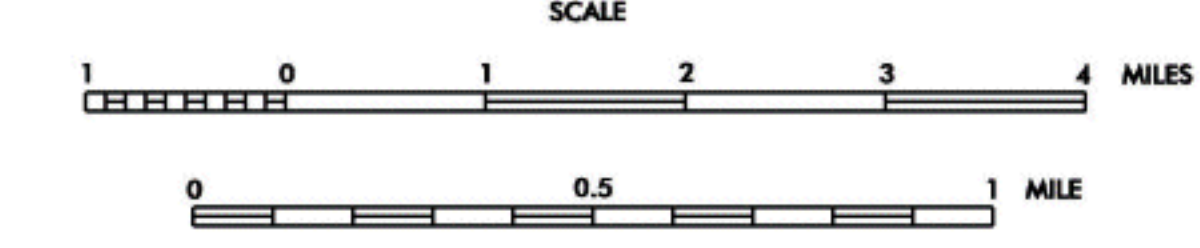


LEGEND	
	PRIMITIVE OR UNIMPROVED ROAD
	GRADED AND DRAINED ROAD
	SOIL, GRAVEL, OR STONE SURFACED ROAD
	HARD SURFACED ROAD
	4 LANE UNDIVIDED HIGHWAY
	DIVIDED HIGHWAY
	HIGHWAY WITH FRONTAGE ROADS
	FULL CONTROL ACCESS
	NON-SYSTEM ROAD
	PROJECTED LOCATION
	INTERSECTION DISTANCE
	TRAFFIC CIRCLE
	HIGHWAY INTERCHANGE
	DETAILED HIGHWAY INTERCHANGE
	ROAD THROUGH MOUNTAIN PASS
	HIGHWAY BRIDGE
	UNDERPASS
	OVERPASS
	DRAW SPAN ON BRIDGE
	HIGHWAY TUNNEL
	FORD
	INTERSTATE HIGHWAY
	U.S. NUMBERED HIGHWAY
	N.C. NUMBERED HIGHWAY
	U.S. NUMBERED BICYCLE ROUTE
	N.C. NUMBERED BICYCLE ROUTE
	INTERSTATE INTERCHANGE NUMBER
	SECONDARY ROAD NUMBER
	CABLE
	RAILROAD, ANY NUMBER OF TRACKS USED BY SINGLE OPERATING COMPANY
	RAILROAD, ANY NUMBER OF TRACKS USED BY MORE THAN ONE OPERATING COMPANY ON SAME OR ADJACENT RIGHTS-OF-WAY
	RAILROAD STATION
	GRADE CROSSING
	UNDERPASS
	OVERPASS
	RAILROAD TUNNEL
	INSET AREA
	URBAN EXTENSION BOUNDARY LINE
	RESERVATION OR PARK BOUNDARY
	CITY LIMIT
	NATIONAL FOREST BOUNDARY
	STATE FOREST BOUNDARY
	FEDERAL GAMLAND BOUNDARY
	STATE GAMLAND BOUNDARY
	MILITARY RESERVATION BOUNDARY
	COUNTY LINE
	STATE LINE
	INCORPORATED CITY OR VILLAGE, (GENERALIZED)
	FREE OR TOLL FERRY
	CANAL
	NARROW STREAM
	WIDE STREAM
	DAM WITH LOCK
	DAM
	RESERVOIR, POND, OR LAKE
	COMMUNITY AND TOWN CENTER
	COUNTY SEAT
	SCHOOL
	COLLEGE OR UNIVERSITY
	HOSPITAL
	CHURCH
	CHURCH WITH CEMETERY
	CEMETERY
	PATROL STATION
	CORRECTIONAL OR PENAL INSTL.
	HIGHWAY GARAGE OR MAINT. YARD
	HIGHWAY DIV. OR DIST. OFFICE
	WEIGHT STATION
	MONUMENT - SMALL HISTORICAL SITE
	LIGHTHOUSE
	MOUNTAIN PEAK
	TRIANGULATION STATION
	COAST GUARD STATION
	MILITARY AIRFIELD
	COMMERCIAL OR MUNICIPAL FIELD
	HANGAR ON FIELD
	LANDING STRIP
	MARKED AUXILIARY FIELD

RANDOLPH COUNTY

NORTH CAROLINA

PREPARED BY THE
NORTH CAROLINA DEPARTMENT OF TRANSPORTATION
STATE ROAD MAINTENANCE UNIT - MAPPING AND INFORMATION SECTION
IN COOPERATION WITH THE
U.S. DEPARTMENT OF TRANSPORTATION
FEDERAL HIGHWAY ADMINISTRATION



SCALE FOR ENLARGEMENTS
10,000 FOOT GRID BASED ON NORTH CAROLINA PLANE COORDINATE SYSTEM
POLYCONIC PROJECTION



REVISED
2/21/00 JCH
6/06/01 JCH
12/29/02 JCH
12/17/03 JCH
04/27/04 JCH