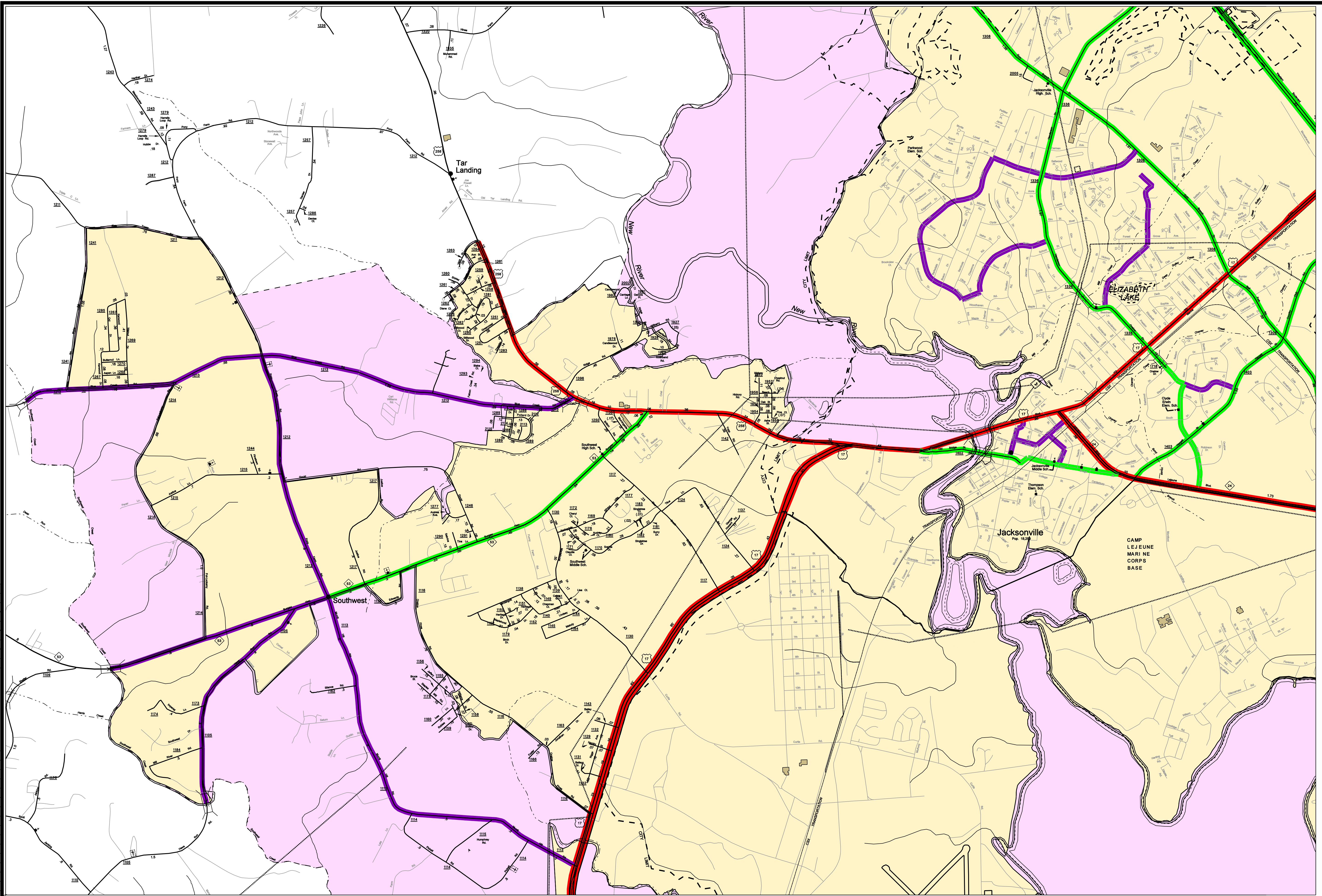
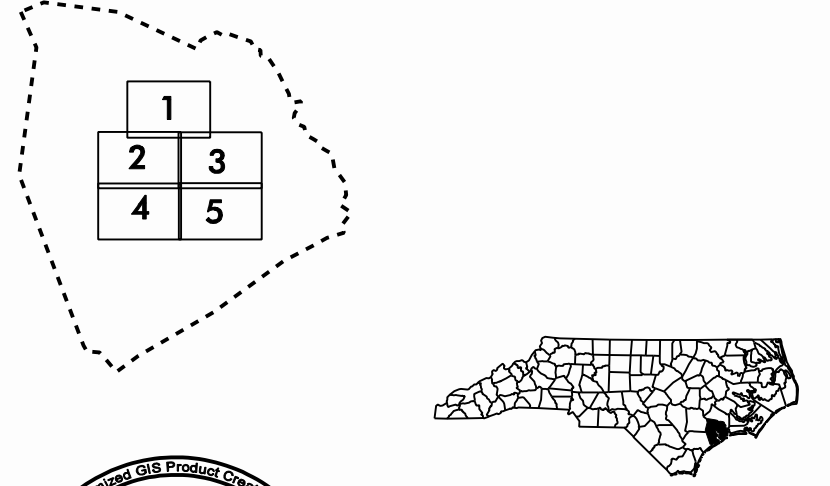


Customized GIS map checked by P & A
 Mapping
 Road Inv.
 REVISED



LEGEND

ROAD	4 LANE UNDIVIDED HIGHWAY	DIVIDED HIGHWAY	FCA	FULL CONTROL ACCESS	DETAILED HIGHWAY INTERCHANGE	ROAD THROUGH MOUNTAIN PASS	HIGHWAY BRIDGE	UNDERPASS	OVERPASS	DRAW SPAN ON BRIDGE	FORD	INTERSTATE HIGHWAY	U.S. NUMBERED HIGHWAY	U.S. NUMBERED BICYCLE ROUTE	N.C. NUMBERED BICYCLE ROUTE	INTERSTATE INTERCHANGE NUMBER	SECONDARY ROAD NUMBER	RAILROAD ANY NUMBER OF TRACKS USED BY SINGLE OPERATING COMPANY	RAILROAD ANY NUMBER OF TRACKS COMPANY OR STATE OR ADJACENT STATE	RAILROAD STATION	RAILROAD TUNNEL	RAILROAD BRIDGE	UNINCORPORATED CENSUS DESIGNATED PLACE	CITY LIMIT	COUNTY LINE	STATE LINE	INCORPORATED CITY OR VILLAGE (SHRINKABLE)	CABLE	RESERVATION OR PARK BOUNDARY	INSET AREA	FREE OR TOLL FERRY	CANAL	NARROW STREAM	WIDE STREAM	DAM WITH LOCK	DAM	RESERVOIR, POND, OR LAKE	COUNTY SEAT	COMMUNITY AND TOWN CENTER	TOWN HALL	SCHOOL	COLLEGE OR UNIVERSITY	HOSPITAL	CHURCH	CHURCH WITH CEMETERY	CEMETERY	CEMETERY PARKING LOT OR SACRILEG	POST OFFICE	POWER PLANT	POWER SUBSTATION	PATROL STATION	COMMERCIAL OR RETAIL WHOLESALE HIGHWAY GARAGE OR MAINT. YARD	WEIGHT STATION	SWAMP OR MARSH	GRAVEL PIT OR QUARRY	MONUMENT-SMALL HISTORICAL SITE	LIGHTHOUSE	MOUNTAIN PEAK	NAME	REST AREA	MUNICIPAL PARK	TRIANGULATION STATION	STATE GUARD STATION	JANICE	FEDERAL GAME LAND	MILITARY AIRFIELD	COMMERCIAL OR MUNICIPAL FIELD	HANGAR ON FIELD	LANDING STRIP	MARKED AIRWAY FIELD	WATERLOUSE OR MANUFACTURING PLANTS	SHOPPING CENTRES
------	--------------------------	-----------------	-----	---------------------	------------------------------	----------------------------	----------------	-----------	----------	---------------------	------	--------------------	-----------------------	-----------------------------	-----------------------------	-------------------------------	-----------------------	--	--	------------------	-----------------	-----------------	--	------------	-------------	------------	---	-------	------------------------------	------------	--------------------	-------	---------------	-------------	---------------	-----	--------------------------	-------------	---------------------------	-----------	--------	-----------------------	----------	--------	----------------------	----------	----------------------------------	-------------	-------------	------------------	----------------	--	----------------	----------------	----------------------	--------------------------------	------------	---------------	------	-----------	----------------	-----------------------	---------------------	--------	-------------------	-------------------	-------------------------------	-----------------	---------------	---------------------	------------------------------------	------------------



SUPPLEMENTAL LEGEND

[Blue/White Box]	INTERSTATE
[Blue/White Box]	FUTURE INTERSTATE
[Brown/White Box]	FREEWAY / EXPRESSWAY
[Brown/White Box]	FUTURE FREEWAY/EXPRESSWAY
[Red/White Box]	OTHER PRINCIPAL ARTERIAL
[Red/White Box]	FUTURE PRINCIPAL ARTERIAL
[Green/White Box]	MINOR ARTERIAL
[Green/White Box]	FUTURE MINOR ARTERIAL
[Purple/White Box]	COLLECTOR
[Purple/White Box]	FUTURE COLLECTOR
[Yellow Box]	EXISTING URBAN AREA
[Pink Box]	SMOOTHED AREA

APPROVED BY FHWA FEB. 14, 2006

**JACKSONVILLE
URBANIZED AREA**

INCLUDED IN
ONSLOW COUNTY

NORTH CAROLINA

PREPARED BY
NORTH CAROLINA DEPARTMENT OF TRANSPORTATION
INFORMATION TECHNOLOGY - GIS UNIT
IN COOPERATION WITH THE
U.S. DEPARTMENT OF TRANSPORTATION
FEDERAL HIGHWAY ADMINISTRATION

