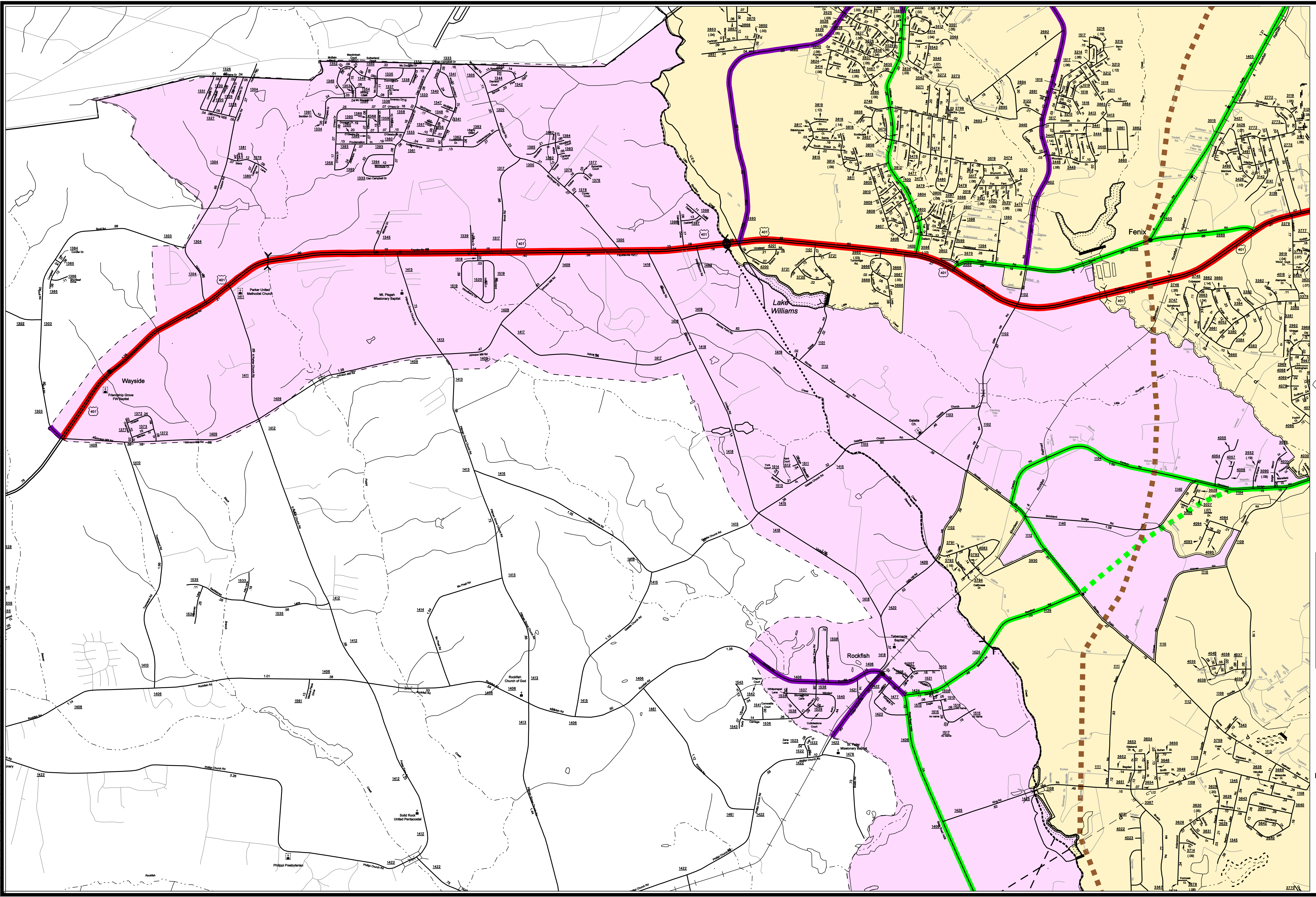


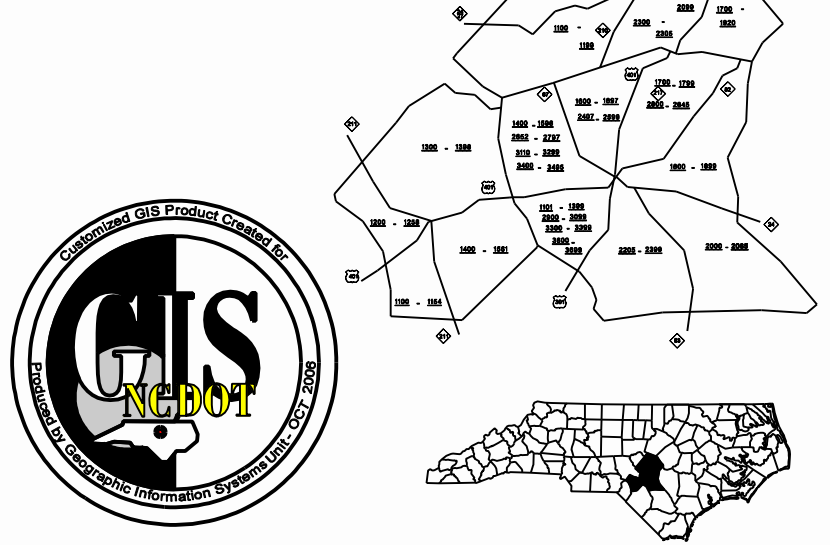
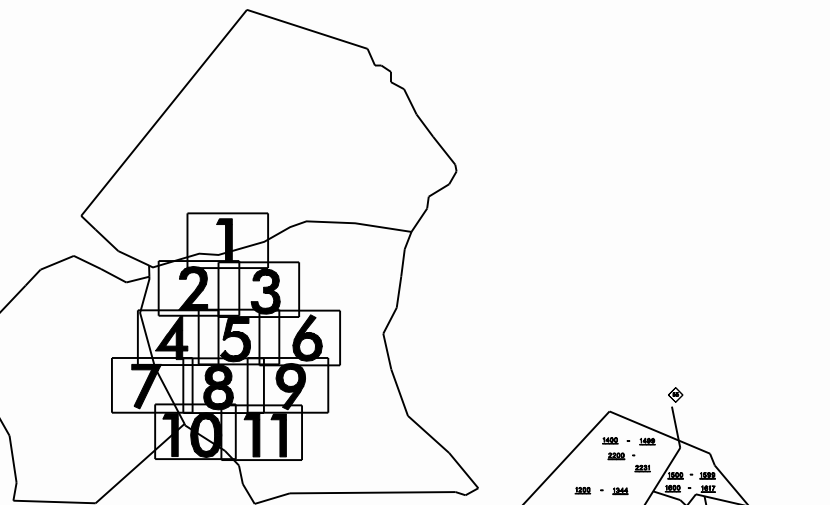
Customized GIS map checked by P & A
 Mapping
 Road Inv.

REVISED



LEGEND

	ROAD		CABLE
	4 LANE UNDIVIDED HIGHWAY		RESERVATION OR PARK BOUNDARY
	DIVIDED HIGHWAY		INSET AREA
	FULL CONTROL ACCESS		FREE OR TOLL FERRY
	DETAILED HIGHWAY INTERCHANGE		CANAL
	ROAD THROUGH MOUNTAIN PASS		NARROW STREAM
	HIGHWAY BRIDGE		WIDE STREAM
	UNDERPASS		DAM WITH LOCK
	OVERPASS		DAM
	DRAW SPAN ON BRIDGE		RESERVOIR, POND, OR LAKE
	HIGHWAY TUNNEL		COUNTY SEAT
	FORD		COMMUNITY AND TOWN CENTER
	INTERSTATE HIGHWAY		TOWN HALL
	U.S. NUMBERED HIGHWAY		SCHOOL
	N.C. NUMBERED HIGHWAY		COLLEGE OR UNIVERSITY
	U.S. NUMBERED BICYCLE ROUTE		HOSPITAL
	N.C. NUMBERED BICYCLE ROUTE		CHURCH
	INTERSTATE INTERCHANGE NUMBER		CHURCH WITH CEMETERY
	SECONDARY ROAD NUMBER		CEMETERY
	RAILROAD ANY NUMBER OF TRACKS USED BY SINGLE OPERATING COMPANY		POST OFFICE
	RAILROAD NUMBER OF TRACKS USED BY MORE THAN ONE OPERATING COMPANY ON SAME OR ADJACENT SIDES-OF-WAY		POWER PLANT
	RAILROAD STATION		POWER SUBSTATION
	GRADE CROSSING		PATROL STATION
	UNDERPASS		CORRECTIONAL OR PENAL INSTN.
	OVERPASS		HIGHWAY DIV. OR DIST. OFFICE
	RAILROAD TUNNEL		WEIGHT STATION
	RAILROAD BRIDGE		GRAVEL PIT OR QUARRY
	UNINCORPORATED CENSUS DESIGNATED PLACE		MONUMENT-SMALL HISTORICAL SITE
	CITY LIMIT		LIGHT HOUSE
	COUNTY LINE		MOUNTAIN PEAK
	STATE LINE		REST AREA
	INCORPORATED CITY OR VILLAGE (UNSHADED)		MUNICIPAL PARK
			TRANSLATION OR RENTAL YARDS
			HIGHWAY GUARD STATION
			FEDERAL GAME LAND
			MILITARY AIRFIELD
			COMMERCIAL OR MUNICIPAL FIELD
			HANGAR ON FIELD
			LANDING STRIP
			MARKED AUXILIARY FIELD
			WAREHOUSES OR MANUFACTURING PLANTS
			SHOPPING CENTERS



SUPPLEMENTAL LEGEND

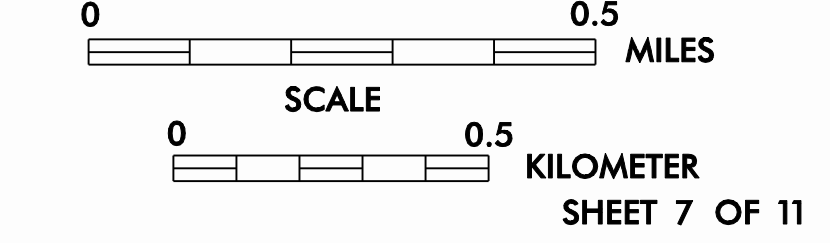
	INTERSTATE
	FUTURE INTERSTATE
	FREEWAY / EXPRESSWAY
	FUTURE FREEWAY/EXPRESSWAY
	OTHER PRINCIPAL ARTERIAL
	FUTURE PRINCIPAL ARTERIAL
	MINOR ARTERIAL
	FUTURE MINOR ARTERIAL
	COLLECTOR
	FUTURE COLLECTOR
	EXISTING URBAN AREA
	SMOOTHED AREA

APPROVED BY FHWA FEB. 14, 2006

FAYETTEVILLE URBANIZED AREA

INCLUDED IN CUMBERLAND, HARNETT, AND HOKE COUNTIES
 NORTH CAROLINA

PREPARED BY
 NORTH CAROLINA DEPARTMENT OF TRANSPORTATION
 INFORMATION TECHNOLOGY - GIS UNIT
 IN COOPERATION WITH THE
 U.S. DEPARTMENT OF TRANSPORTATION
 FEDERAL HIGHWAY ADMINISTRATION
 SCALE



1"=1500'=457.2m