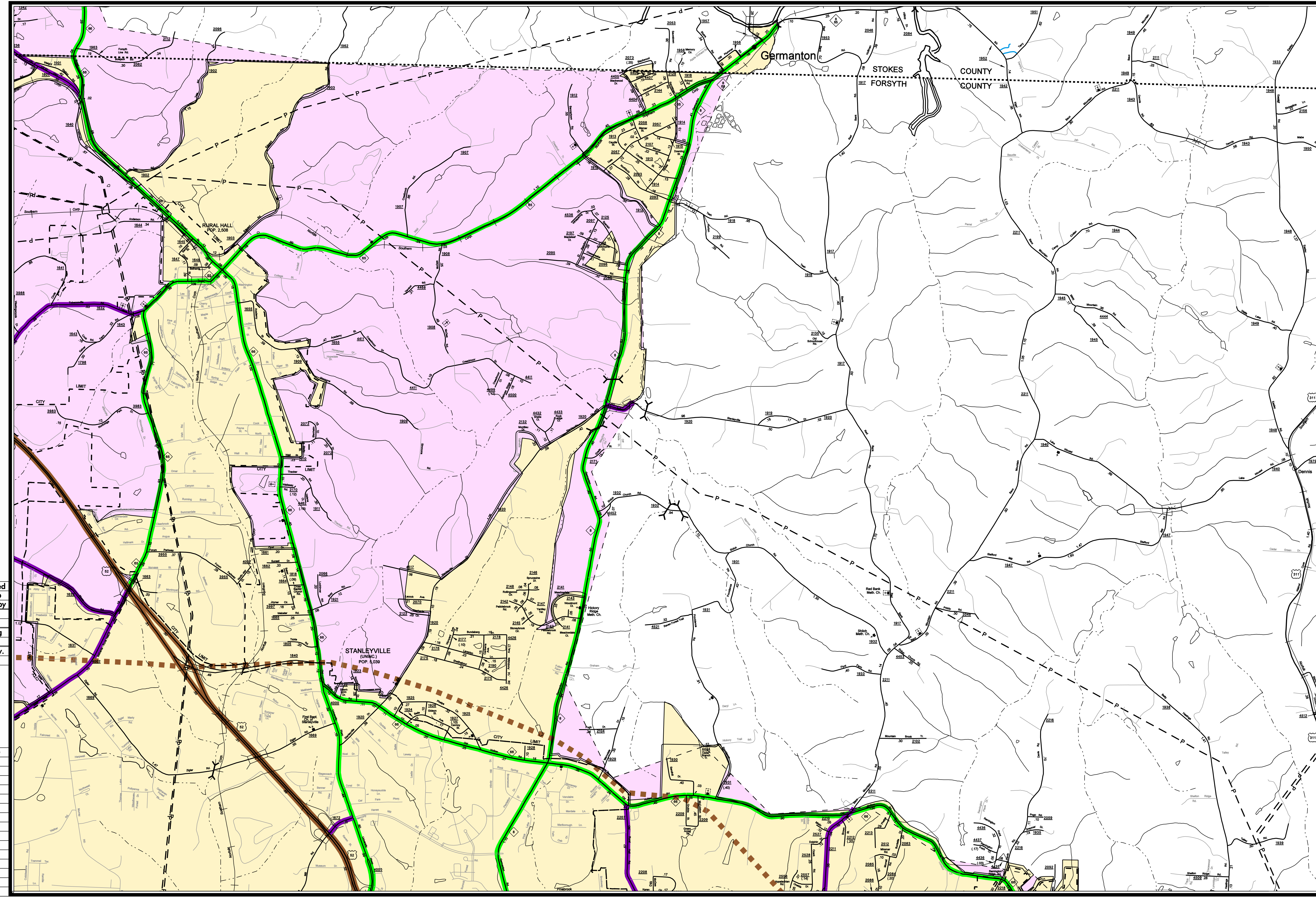
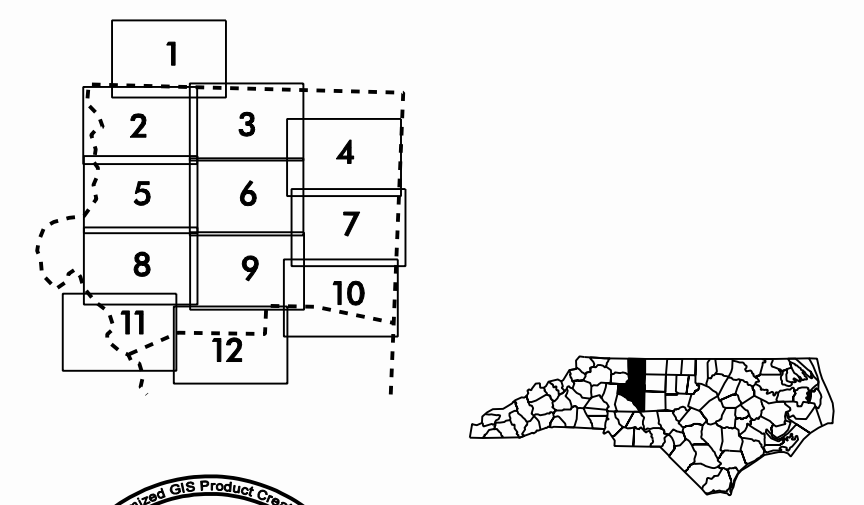


Customized GIS map checked by P & A
 Mapping
 Road Inv.
 REVISED



LEGEND

ROAD	4 LANE UNDIVIDED HIGHWAY	DIVIDED HIGHWAY	FCA	FULL CONTROL ACCESS	DETAILED HIGHWAY INTERCHANGE	ROAD THROUGH MOUNTAIN PASS	HIGHWAY BRIDGE	UNDERPASS	OVERPASS	DRAW SPAN ON BRIDGE	HIGHWAY TUNNEL	FORD	INTERSTATE HIGHWAY	U.S. NUMBERED HIGHWAY	N.C. NUMBERED HIGHWAY	U.S. NUMBERED BICYCLE ROUTE	N.C. NUMBERED BICYCLE ROUTE	INTERSTATE INTERCHANGE NUMBER	RAILROAD ANY NUMBER OF TRACKS USED BY SINGLE OPERATING COMPANY	RAILROAD ANY NUMBER OF TRACKS USED BY SEVERAL DIFFERENT OPERATING COMPANIES OR SAME OR ADJACENT RIGHTS-OF-WAY	RAILROAD STATION	GRADE CROSSING	UNDERPASS	OVERPASS	RAILROAD TUNNEL	RAILROAD BRIDGE	UNINCORPORATED CENSUS DISCONTINUED PLACE	CITY LIMIT	COUNTY LINE	STATE LINE	INCORPORATED CITY OR VILLAGE (GENERALIZED)	TRAIL/LEASING	CABLE	RESERVATION OR PARK BOUNDARY	INLET AREA	FERRY OR TOLL FERRY	CANAL	NARROW STREAM	WIDE STREAM	DAM WITH LOCK	DAM	RESERVOIR, POND, OR LAKE	COUNTY SEAT	COMMUNITY AND TOWN CENTER	TOWN HALL	SCHOOL	COLLEGE OR UNIVERSITY	HOSPITAL	CHURCH	CHURCH WITH CEMETERY	CEMETERY	PARKING LOT OR SACRILEGE	POST OFFICE	POWER PLANT	POWER SUBSTATION	PATROL STATION	COMMERCIAL OR RETAIL WHOLESALE HIGHWAY GARAGE OR MAINT. YARD	WEIGHT STATION	SHRIMP OR MARSH	GRAVEL PIT OR QUARRY	MONUMENT-SMALL HISTORICAL SITE	LIGHTHOUSE	MOUNTAIN PEAK	NAME	REST AREA	MUNICIPAL PARK	TRANSPORTATION STATION	STATE GUARD STATION	JAIL	FEDERAL GAME LAND	MILITARY AIRFIELD	COMMERCIAL OR MUNICIPAL FIELD	HANGAR ON FIELD	LANDING STRIP	MARKED AIRFIELD FIELD	WAREHOUSES OR MANUFACTURING PLANTS	SHOPPING CENTRES
------	--------------------------	-----------------	-----	---------------------	------------------------------	----------------------------	----------------	-----------	----------	---------------------	----------------	------	--------------------	-----------------------	-----------------------	-----------------------------	-----------------------------	-------------------------------	--	---	------------------	----------------	-----------	----------	-----------------	-----------------	--	------------	-------------	------------	--	---------------	-------	------------------------------	------------	---------------------	-------	---------------	-------------	---------------	-----	--------------------------	-------------	---------------------------	-----------	--------	-----------------------	----------	--------	----------------------	----------	--------------------------	-------------	-------------	------------------	----------------	--	----------------	-----------------	----------------------	--------------------------------	------------	---------------	------	-----------	----------------	------------------------	---------------------	------	-------------------	-------------------	-------------------------------	-----------------	---------------	-----------------------	------------------------------------	------------------



SUPPLEMENTAL LEGEND

	INTERSTATE
	FUTURE INTERSTATE
	FREEWAY / EXPRESSWAY
	FUTURE FREEWAY/EXPRESSWAY
	OTHER PRINCIPAL ARTERIAL
	FUTURE PRINCIPAL ARTERIAL
	MINOR ARTERIAL
	FUTURE MINOR ARTERIAL
	COLLECTOR
	FUTURE COLLECTOR
	EXISTING URBAN AREA
	SMOOTHED AREA

APPROVED BY FHWA FEB. 14, 2006

WINSTON-SALEM URBANIZED AREA

INCLUDED IN
DAVIDSON, DAVIE, FORSYTH AND STOKES

NORTH CAROLINA

PREPARED BY
NORTH CAROLINA DEPARTMENT OF TRANSPORTATION
INFORMATION TECHNOLOGY - GIS UNIT
IN COOPERATION WITH THE
U.S. DEPARTMENT OF TRANSPORTATION
FEDERAL HIGHWAY ADMINISTRATION

