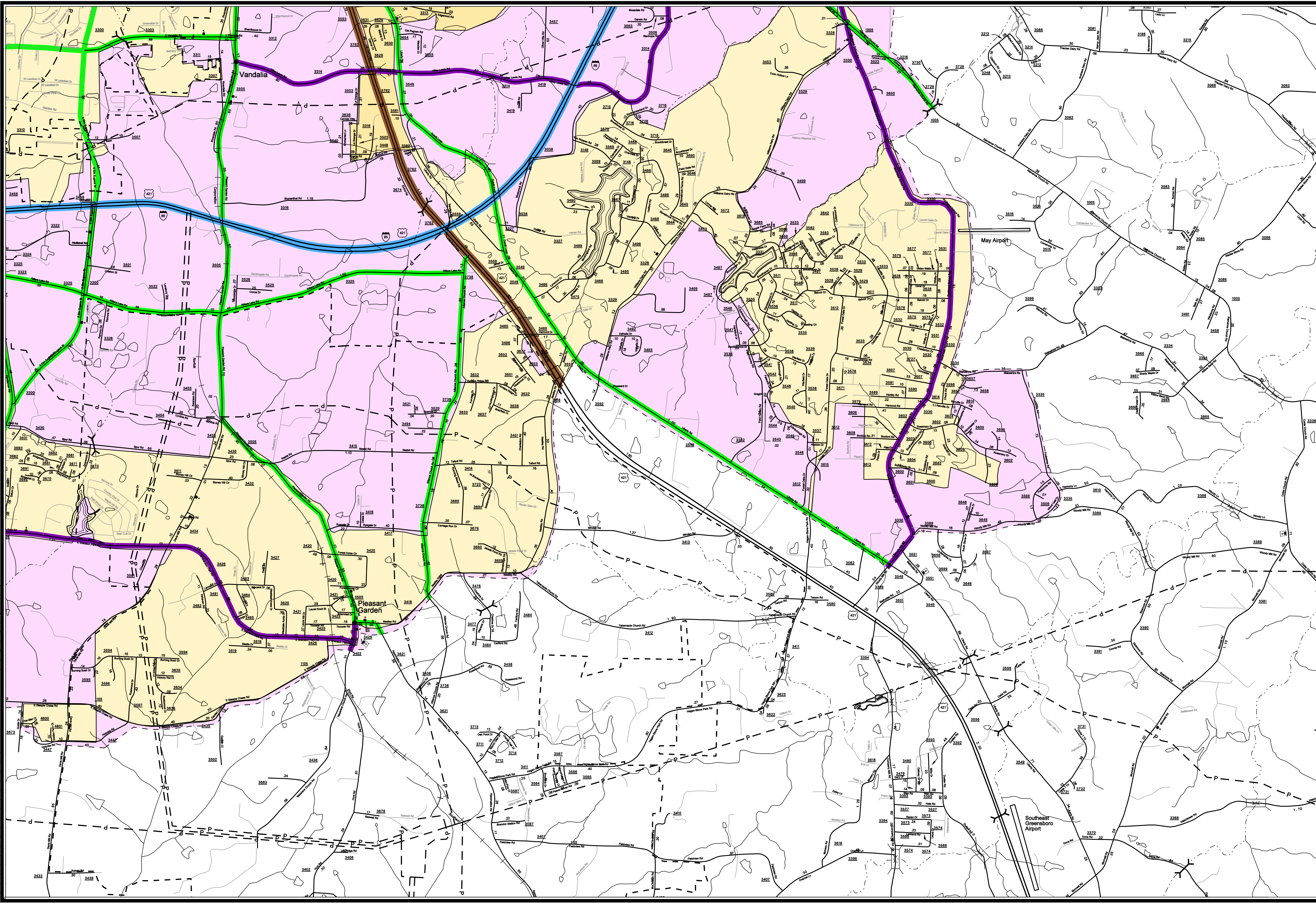
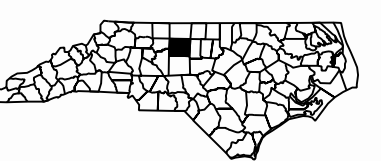


Customized GIS map checked by P & A
 Mapping
 Road Inv.
 REVISED

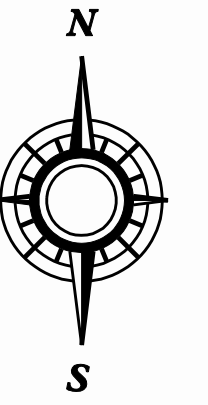


- ### LEGEND
- ROAD
 - 4 LANE UNDIVIDED HIGHWAY
 - DIVIDED HIGHWAY
 - FCA FULL CONTROL ACCESS
 - DETAILED HIGHWAY INTERCHANGE
 - ROAD THROUGH MOUNTAIN PASS
 - HIGHWAY BRIDGE
 - UNDERPASS
 - OVERPASS
 - DRAW SPAN ON BRIDGE
 - HIGHWAY TUNNEL
 - POSD
 - INTERSTATE HIGHWAY
 - U.S. NUMBERED HIGHWAY
 - N.C. NUMBERED HIGHWAY
 - U.S. NUMBERED BI-CYCLE ROUTE
 - CHARTER
 - U.S. NUMBERED BI-CYCLE ROUTE
 - INTERSTATE INTERCHANGE NUMBER
 - SECONDARY ROAD NUMBER
 - RAILROAD AND NUMBER OF TRACES USED BY SINGLE OPERATING COMPANY
 - RAILROAD AND NUMBER OF TRACES USED BY MORE THAN ONE OPERATION
 - RAILROAD STATION
 - RAILROAD TUNNEL
 - RAILROAD BRIDGE
 - UNINCORPORATED CENSUS DESIGNATED PLACE
 - CITY LIMIT
 - COUNTY LINE
 - STATE LINE
 - INCORPORATED CITY OR VILLAGE (GENERALIZED)
 - CABLE
 - RESERVATION OR PARK BOUNDARY
 - RISET AREA
 - FEB OR TOLL FERRY
 - CANAL
 - NARROW STREAM
 - WIDE STREAM
 - DAM WITH LOCK
 - DAM
 - RESERVOIR, POND, OR LAKE
 - COUNTY SEAT
 - COMMUNITY AND TOWN CENTER
 - TOWN HALL
 - SCHOOL
 - COLLEGE OR UNIVERSITY
 - HOSPITAL
 - CHURCH WITH CEMETERY
 - POST OFFICE
 - POWER PLANT
 - POWER SUBSTATION
 - PATROL STATION
 - CORRECTIONAL OR PENAL INSTITUTION
 - HIGHWAY GARAGE OR MAINT. YARD
 - HIGHWAY DIV. OR DIST. OFFICE
 - WEIGHT STATION
 - SHOUP OR MASH
 - GRAVEL PIT OR QUARRY
 - MONUMENT-BEARING HISTORICAL SITE
 - LIGHTHOUSE
 - MOUNTAIN PEAK
 - REST AREA
 - MUNICIPAL PARK
 - TRIANGULATION STATION
 - COAST GUARD STATION
 - ANCHOR
 - FEDERAL GAME LAND
 - MILITARY AIRFIELD
 - COMMERCIAL OR MUNICIPAL FIELD
 - HANGAR ON FIELD
 - LANDING STRIP
 - MARKED AUXILIARY FIELD
 - WAREHOUSES OR MANUFACTURING PLANTS
 - SHOPPING CENTERS

1	2	3
4	5	6
	7	8
	9	10



- ### SUPPLEMENTAL LEGEND
- INTERSTATE
 - FUTURE INTERSTATE
 - FREEWAY / EXPRESSWAY
 - FUTURE FREEWAY/EXPRESSWAY
 - OTHER PRINCIPAL ARTERIAL
 - FUTURE PRINCIPAL ARTERIAL
 - MINOR ARTERIAL
 - FUTURE MINOR ARTERIAL
 - COLLECTOR
 - FUTURE COLLECTOR
 - EXISTING URBAN AREA
 - SMOOTHED AREA
- APPROVED BY FHWA FEB. 14, 2006



GREENSBORO URBANIZED AREA

INCLUDED IN
 GUILFORD COUNTY
 NORTH CAROLINA

PREPARED BY
 NORTH CAROLINA DEPARTMENT OF TRANSPORTATION
 INFORMATION TECHNOLOGY - GIS UNIT
 IN COOPERATION WITH THE
 U.S. DEPARTMENT OF TRANSPORTATION
 FEDERAL HIGHWAY ADMINISTRATION

SCALE
 0 0.5 MILES
 0 0.5 KILOMETER

SH.10 OF 10

1"=1500'=457.2m