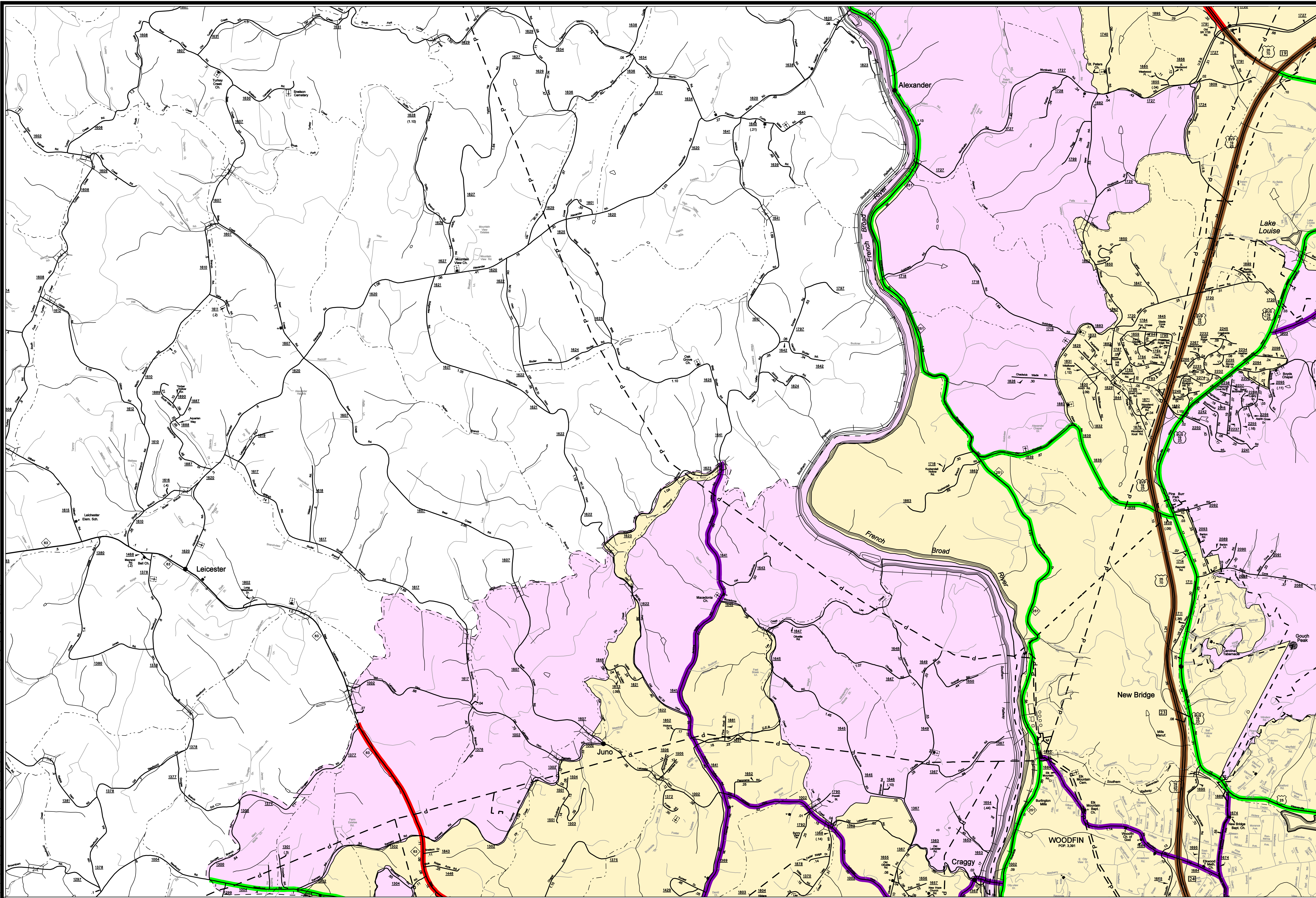
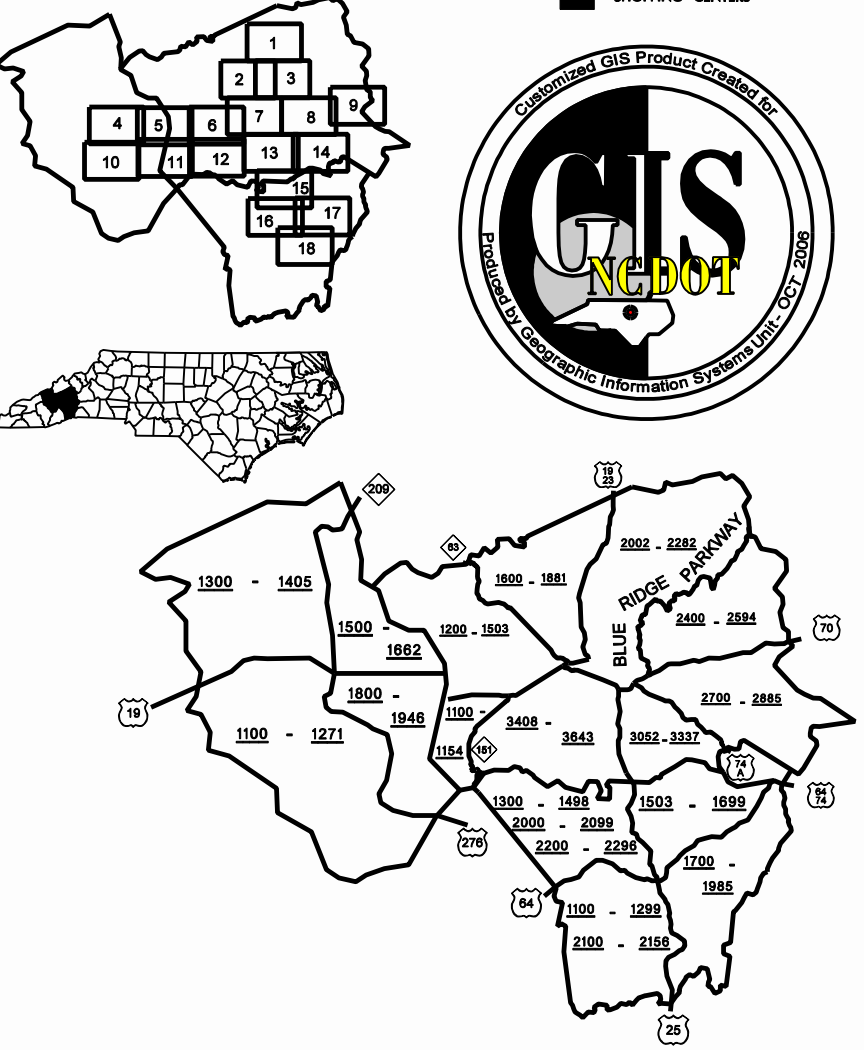


Customized GIS map checked by P & A
 Mapping
 Road Inv.

REVISED



- ### LEGEND
- | | | | |
|--|--|--|---|
| | ROAD | | CABLE |
| | 4 LANE UNDIVIDED HIGHWAY | | RESERVATION OR PARK BOUNDARY |
| | DIVIDED HIGHWAY | | INSET AREA |
| | FULL CONTROL ACCESS | | FREE OR TOLL FERRY |
| | DETAILED HIGHWAY INTERCHANGE | | CANAL |
| | ROAD THROUGH MOUNTAIN PASS | | NARROW STREAM |
| | HIGHWAY BRIDGE | | WIDE STREAM |
| | UNDERPASS | | DAM WITH LOCK |
| | OVERPASS | | DAM |
| | DRAW SPAN ON BRIDGE | | RESERVOIR, POND, OR LAKE |
| | HIGHWAY TUNNEL | | COUNTY SEAT |
| | FORD | | TOWN AND CITY CENTER |
| | INTERSTATE HIGHWAY | | SCHOOL |
| | U.S. NUMBERED HIGHWAY | | COLLEGE OR UNIVERSITY |
| | N.C. NUMBERED HIGHWAY | | HOSPITAL |
| | N.C. NUMBERED BICYCLE ROUTE | | CHURCH WITH CEMETERY |
| | INTERSTATE INTERCHANGE NUMBER | | CEMETERY |
| | SECONDARY ROAD NUMBER | | CEMETERY OR RACETRACK |
| | RAILROAD ANY NUMBER OF TRACKS USED BY SINGLE OPERATING COMPANY | | POST OFFICE |
| | RAILROAD ANY NUMBER OF TRACKS USED BY SEVERAL OPERATING COMPANIES OR STATE OR ADJACENT STATES OR COUNTRIES | | POWER PLANT |
| | RAILROAD STATION | | POWER SUBSTATION |
| | GRADE CROSSING | | PATROL STATION |
| | UNDERPASS | | COMMERCIAL OR RETAIL RETAIL HIGHWAY GARAGE OR MAINT. YARD |
| | OVERPASS | | RIGHT OF WAY |
| | RAILROAD TUNNEL | | SWAMP OR MARSH |
| | RAILROAD BRIDGE | | GRAVEL PIT OR QUARRY |
| | DISINCORPORATED PLACE | | MOUND OR SMALL HISTORICAL SITE |
| | CITY LIMIT | | MOUNTAIN PEAK |
| | COUNTY LINE | | NAME |
| | STATE LINE | | REST AREA |
| | INCORPORATED CITY OR VILLAGE (GENERALIZED) | | MUNICIPAL PARK |
| | | | TRANSLOCATION STATION |
| | | | STATE GUARD STATION |
| | | | FEDERAL GAME LAND |
| | | | MILITARY AIRFIELD |
| | | | COMMERCIAL OR MUNICIPAL FIELD |
| | | | HANGAR ON FIELD |
| | | | LANDING STRIP |
| | | | MARKED AIRWAY FIELD |
| | | | WAREHOUSES OR MANUFACTURING PLANTS |
| | | | SHIPPING CENTERS |



- ### SUPPLEMENTAL LEGEND
- | | |
|--|---------------------------|
| | INTERSTATE |
| | FUTURE INTERSTATE |
| | FUTURE FREEWAY/EXPRESSWAY |
| | OTHER FREEWAY/EXPRESSWAY |
| | OTHER PRINCIPAL ARTERIAL |
| | FUTURE PRINCIPAL ARTERIAL |
| | MINOR ARTERIAL |
| | FUTURE MINOR ARTERIAL |
| | COLLECTOR |
| | FUTURE COLLECTOR |
| | EXISTING URBAN AREA |
| | SMOOTHED AREA |
- APPROVED BY FHWA FEB. 14, 2006

ASHEVILLE URBANIZED AREA

INCLUDED IN
 BUNCOMBE, HAYWOOD AND HENDERSON COUNTIES

NORTH CAROLINA

PREPARED BY
 NORTH CAROLINA DEPARTMENT OF TRANSPORTATION
 INFORMATION TECHNOLOGY - GIS UNIT

IN COOPERATION WITH THE
 U.S. DEPARTMENT OF TRANSPORTATION
 FEDERAL HIGHWAY ADMINISTRATION

