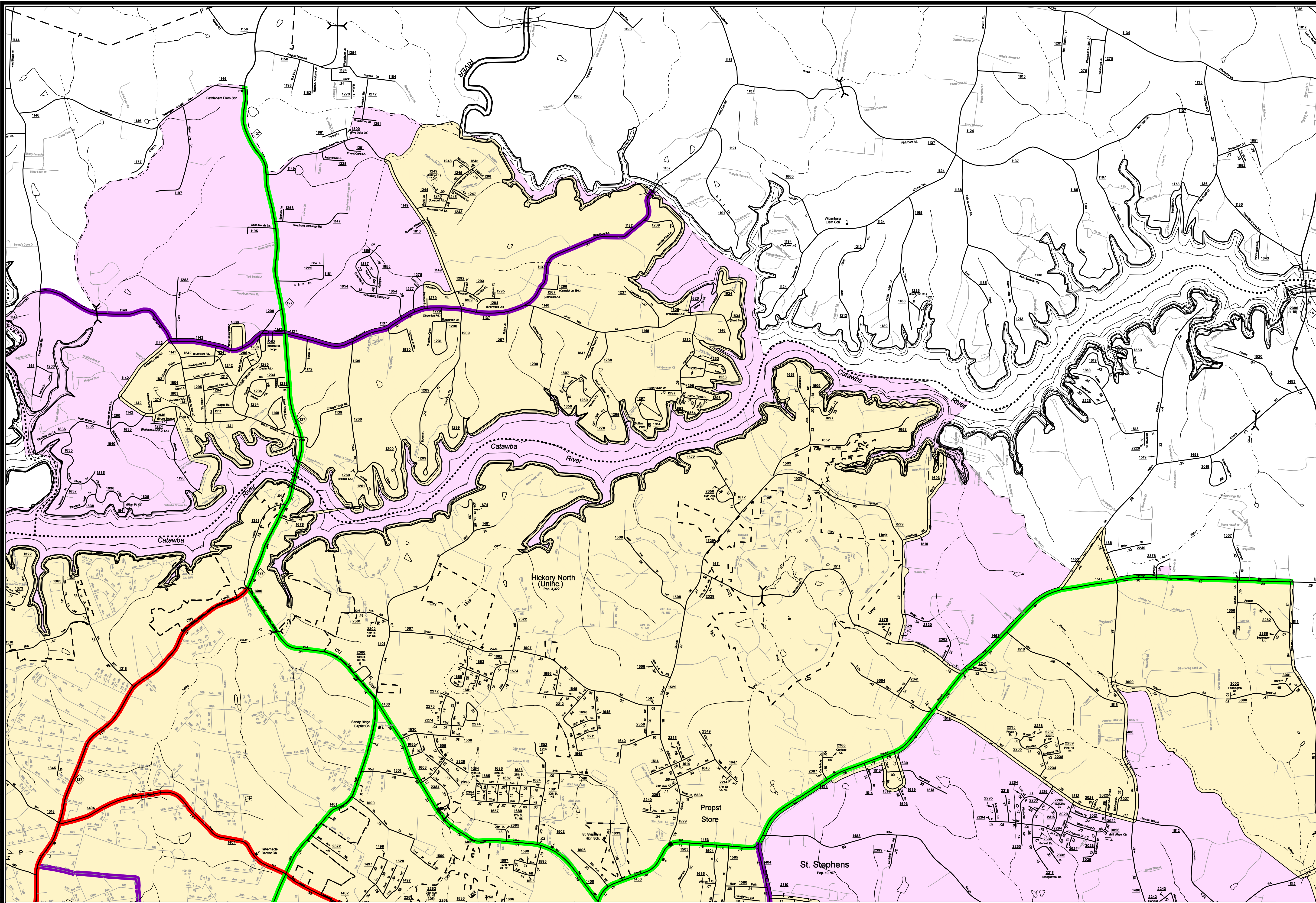
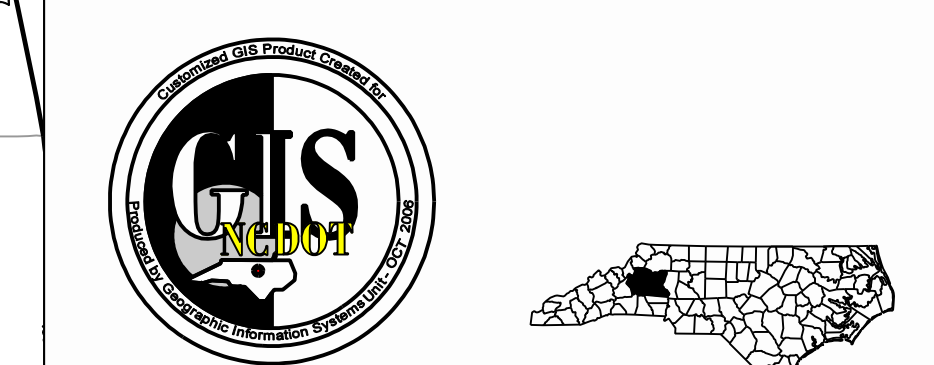
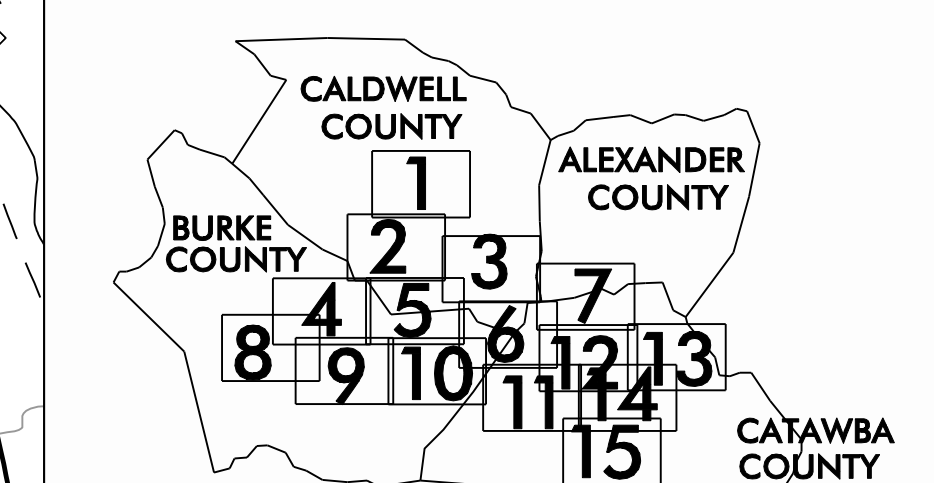


Disclaimer: Although the GIS Unit's goal is to provide the most correct and complete information as possible, the magnitude and dynamics of the data prevent any guarantee of accuracy or completeness. If you find any information that should be corrected, please send your request to the GIS Unit.



LEGEND

ROAD	4 LANE UNDIVIDED HIGHWAY	DIVIDED HIGHWAY	FCA	FULL CONTROL ACCESS	DETAILED HIGHWAY INTERCHANGE	ROAD THROUGH MOUNTAIN PASS	HIGHWAY BRIDGE	UNDERPASS	OVERPASS	DRAW SPAN ON BRIDGE	HIGHWAY TUNNEL	POD	INTERSTATE HIGHWAY	U.S. NUMBERED HIGHWAY	N.C. NUMBERED HIGHWAY	U.S. NUMBERED BICYCLE ROUTE	N.C. NUMBERED BICYCLE ROUTE	INTERSTATE INTERCHANGE NUMBER	SECONDARY ROAD NUMBER	RAILROAD ANY NUMBER OF TRACES USED BY SINGLE OPERATING COMPANY	RAILROAD ANY NUMBER OF TRACES USED BY MORE THAN ONE OPERATION	BOULEVARD OR ADJACENT RIGHTS-OF-WAY	RAILROAD STATION	GRADE CROSSING	UNDERPASS	OVERPASS	RAILROAD TUNNEL	RAILROAD BRIDGE	UNINCORPORATED CENSUS DESIGNATED PLACE	CITY LINE	COUNTY LINE	STATE LINE	INCORPORATED CITY OR VILLAGE (GENERALIZED)	CABLE	RESERVATION OR PARK BOUNDARY	RESET AREA	FERRIS OR TOLL FERRY	CANAL	NARROW STREAM	WIDE STREAM	DAM WITH LOCK	DAM	RESERVOIR, POND, OR LAKE	COUNTY SEAT	COMMUNITY AND TOWN CENTER	TOWN HALL	SCHOOL	COLLEGE OR UNIVERSITY	HOSPITAL	CHURCH	CHURCH WITH CEMETERY	POST OFFICE	POWER PLANT	POWER SUBSTATION	PUBLIC STATION	CONNECTIONAL OR PENAL BIRTH	HIGHWAY GARAGE OR MARINE YARD	HIGHWAY DIV. OR DIST. OFFICE	WEIGHT STATION	SHRIMP OR MARSH	GRAVEL PIT OR QUARRY	MONUMENT-DISH HISTORICAL SITE	LIGHTHOUSE	MOUNTAIN PEAK	ISLAND	MUNICIPAL PARK	REST AREA	TRIANGULATION STATION	COAST GUARD STATION	FEDERAL GAME LAND	MILITARY AIRFIELD	COMMERCIAL OR MUNICIPAL FIELD	HANGAR ON FIELD	LANDING STRIP	MARKED AUXILIARY FIELD	WAREHOUSE OR MANUFACTURING PLANT	SHOPPING CENTERS
------	--------------------------	-----------------	-----	---------------------	------------------------------	----------------------------	----------------	-----------	----------	---------------------	----------------	-----	--------------------	-----------------------	-----------------------	-----------------------------	-----------------------------	-------------------------------	-----------------------	--	---	-------------------------------------	------------------	----------------	-----------	----------	-----------------	-----------------	--	-----------	-------------	------------	--	-------	------------------------------	------------	----------------------	-------	---------------	-------------	---------------	-----	--------------------------	-------------	---------------------------	-----------	--------	-----------------------	----------	--------	----------------------	-------------	-------------	------------------	----------------	-----------------------------	-------------------------------	------------------------------	----------------	-----------------	----------------------	-------------------------------	------------	---------------	--------	----------------	-----------	-----------------------	---------------------	-------------------	-------------------	-------------------------------	-----------------	---------------	------------------------	----------------------------------	------------------



SUPPLEMENTAL LEGEND

INTERSTATE	FUTURE INTERSTATE	FREEWAY / EXPRESSWAY	FUTURE FREEWAY/EXPRESSWAY	OTHER PRINCIPAL ARTERIAL	FUTURE PRINCIPAL ARTERIAL	MINOR ARTERIAL	FUTURE MINOR ARTERIAL	COLLECTOR	FUTURE COLLECTOR	EXISTING URBAN AREA	SMOOTHED AREA
------------	-------------------	----------------------	---------------------------	--------------------------	---------------------------	----------------	-----------------------	-----------	------------------	---------------------	---------------

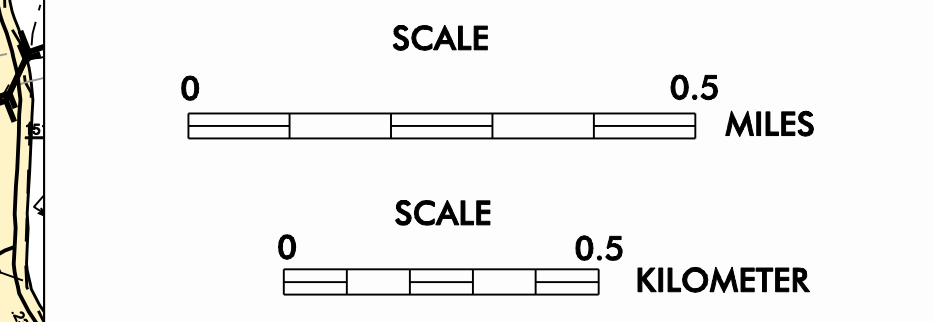
APPROVED BY FHWA FEB. 14, 2006

HICKORY-NEWTON-CONOVER URBANIZED AREA

INCLUDED IN
ALEXANDER, BURKE, CALDWELL, AND CATAWBA COUNTIES

NORTH CAROLINA

PREPARED BY
NORTH CAROLINA DEPARTMENT OF TRANSPORTATION
INFORMATION TECHNOLOGY - GIS UNIT
IN COOPERATION WITH THE
U.S. DEPARTMENT OF TRANSPORTATION
FEDERAL HIGHWAY ADMINISTRATION



Customized GIS map checked by P & A
Mapping
Road Inv.
REVISED