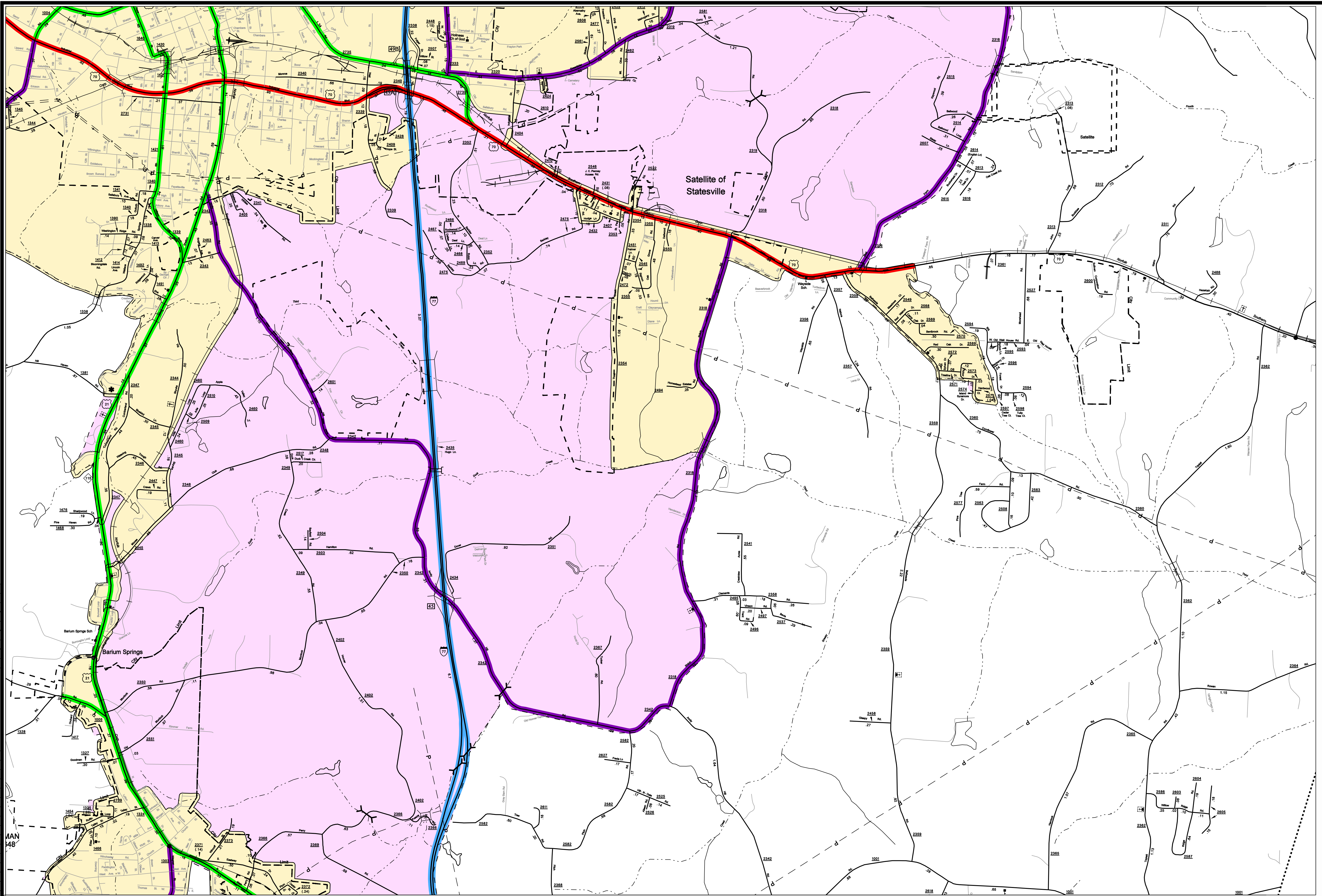
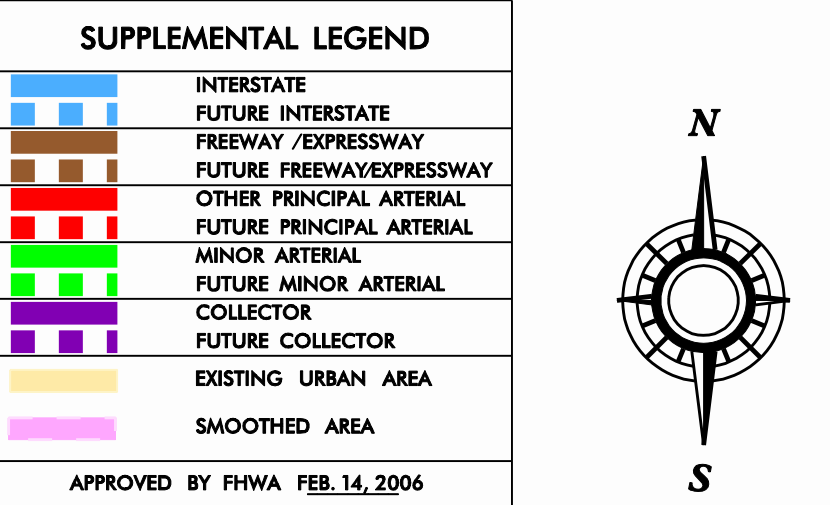
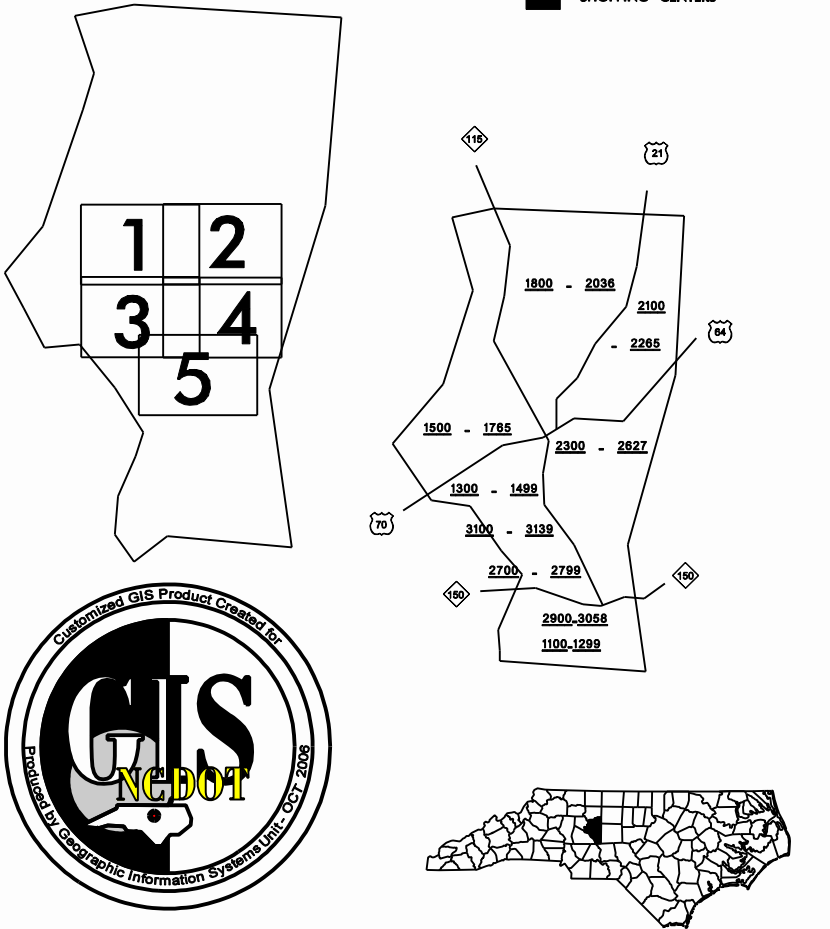


Customized GIS map checked by P & A
 Mapping
 Road Inv.
 REVISED



- ### LEGEND
- | | | | |
|--|---|--|--|
| | ROAD | | CABLE |
| | 4 LANE UNDIVIDED HIGHWAY | | RESERVATION OR PARK BOUNDARY |
| | DIVIDED HIGHWAY | | INSET AREA |
| | FULL CONTROL ACCESS | | FREE OR TOLL FERRY |
| | DETAILED HIGHWAY INTERCHANGE | | CANAL |
| | ROAD THROUGH MOUNTAIN PASS | | NARROW STREAM |
| | HIGHWAY BRIDGE | | WIDE STREAM |
| | UNDERPASS | | DAM WITH LOCK |
| | OVERPASS | | DAM |
| | DRAW SPAN ON BRIDGE | | RESERVOIR, POND, OR LAKE |
| | HIGHWAY TUNNEL | | COUNTY SEAT AND TOWN CENTER |
| | FORD | | SCHOOL |
| | INTERSTATE HIGHWAY | | COLLEGE OR UNIVERSITY |
| | U.S. NUMBERED HIGHWAY | | HOSPITAL |
| | N.C. NUMBERED HIGHWAY | | CHURCH WITH CEMETERY |
| | U.S. NUMBERED BICYCLE ROUTE | | CEMETERY OR RACETRACK |
| | N.C. NUMBERED BICYCLE ROUTE | | POST OFFICE |
| | SECONDARY ROAD NUMBER | | POWER PLANT |
| | RAILROAD ANY NUMBER OF TRACKS USED BY SINGLE OPERATING COMPANY | | POWER SUBSTATION |
| | RAILROAD ANY NUMBER OF TRACKS USED BY MORE THAN ONE OPERATING COMPANY ON SAME OR ADJACENT RIGHTS-OF-WAY | | PATROL STATION |
| | RAILROAD STATION | | COMMERCIAL OR RETAIL HIGHWAY GARAGE OR MAINT. YARD |
| | GRADE CROSSING | | WEIGHT STATION |
| | UNDERPASS | | SHOAP OR MARSH |
| | OVERPASS | | GRAVEL PIT OR QUARRY |
| | RAILROAD TUNNEL | | MONUMENT - SMALL HISTORICAL SITE |
| | RAILROAD BRIDGE | | LIGHT HOUSE |
| | UNINCORPORATED CENSUS DESIGNATED PLACE | | MOUNTAIN PEAK |
| | CITY LIMIT | | MINE |
| | COUNTY LINE | | REST AREA |
| | STATE LINE | | MUNICIPAL PARK |
| | INCORPORATED CITY OR VILLAGE (GENERALIZED) | | TRANSIT STATION |
| | | | SCENIC OVERLOOK STATION |
| | | | FEDERAL GAME LAND |
| | | | MILITARY AIRFIELD |
| | | | COMMERCIAL OR MUNICIPAL FIELD |
| | | | HANGAR ON FIELD |
| | | | LANDING STRIP |
| | | | MARKED AIRWAY FIELD |
| | | | WAREHOUSES OR MANUFACTURING PLANTS |
| | | | SHOPPING CENTERS |



STATESVILLE URBAN CLUSTER

INCLUDED IN
 IREDELL COUNTY

NORTH CAROLINA

PREPARED BY
 NORTH CAROLINA DEPARTMENT OF TRANSPORTATION
 INFORMATION TECHNOLOGY - GIS UNIT
 IN COOPERATION WITH THE
 U.S. DEPARTMENT OF TRANSPORTATION
 FEDERAL HIGHWAY ADMINISTRATION

